

# World Journal of *Gastrointestinal Endoscopy*

*World J Gastrointest Endosc* 2017 July 16; 9(7): 296-345



### ORIGINAL ARTICLE

#### Retrospective Cohort Study

- 296 Assessment of the July effect in post-endoscopic retrograde cholangiopancreatography pancreatitis: Nationwide Inpatient Sample  
*Schulman AR, Abougergi MS, Thompson CC*

- 304 Efficacy of a newly developed dilator for endoscopic ultrasound-guided biliary drainage  
*Kanno Y, Ito K, Koshita S, Ogawa T, Masu K, Masaki Y, Noda Y*

#### Retrospective Study

- 310 Use of shape-from-shading to characterize mucosal topography in celiac disease videocapsule images  
*Ciaccio EJ, Bhagat G, Lewis SK, Green PH*
- 319 Use of volumetric laser endomicroscopy for dysplasia detection at the gastroesophageal junction and gastric cardia  
*Gupta N, Siddiqui U, Waxman I, Chapman C, Koons A, Valuckaite V, Xiao SY, Setia N, Hart J, Konda V*

#### Observational Study

- 327 All ileo-cecal ulcers are not Crohn's: Changing perspectives of symptomatic ileocecal ulcers  
*Toshniwal J, Chawhani R, Thawrani A, Sharma R, Arora A, Kotecha HL, Goyal M, Kirnake V, Jain P, Tyagi P, Bansal N, Sachdeva M, Ranjan P, Kumar M, Sharma P, Singla V, Bansal R, Shah V, Bhalla S, Kumar A*

#### Prospective Study

- 334 Endoscopic submucosal dissection of gastric adenomas using the clutch cutter  
*Akahoshi K, Kubokawa M, Gibo J, Osada S, Tokumaru K, Yamaguchi E, Ikeda H, Sato T, Miyamoto K, Kimura Y, Shiratsuchi Y, Akahoshi K, Oya M, Koga H, Ihara E, Nakamura K*

### CASE REPORT

- 341 Management of hyperplastic gastric polyp following upper gastrointestinal bleeding in infant with Menkes' disease  
*Belsha D, Narula P, Urs A, Thomson M*

## Contents

*World Journal of Gastrointestinal Endoscopy*  
Volume 9 Number 7 July 16, 2017

### ABOUT COVER

Editorial Board Member of *World Journal of Gastrointestinal Endoscopy*, Erman Aytac, MD, Academic Fellow, Department of Colorectal Surgery, Cleveland Clinic, Digestive Disease Institute, Cleveland, OH 44106, United States

### AIM AND SCOPE

*World Journal of Gastrointestinal Endoscopy* (*World J Gastrointest Endosc*, *WJGE*, online ISSN 1948-5190, DOI: 10.4253) is a peer-reviewed open access (OA) academic journal that aims to guide clinical practice and improve diagnostic and therapeutic skills of clinicians.

*WJGE* covers topics concerning gastroscopy, intestinal endoscopy, colonoscopy, capsule endoscopy, laparoscopy, interventional diagnosis and therapy, as well as advances in technology. Emphasis is placed on the clinical practice of treating gastrointestinal diseases with or under endoscopy.

We encourage authors to submit their manuscripts to *WJGE*. We will give priority to manuscripts that are supported by major national and international foundations and those that are of great clinical significance.

### INDEXING/ABSTRACTING

*World Journal of Gastrointestinal Endoscopy* is now indexed in Emerging Sources Citation Index (Web of Science), PubMed, and PubMed Central.

### FLYLEAF

#### I-III Editorial Board

### EDITORS FOR THIS ISSUE

Responsible Assistant Editor: *Xiang Li*  
Responsible Electronic Editor: *Ya-Jing Lu*  
Proofing Editor-in-Chief: *Lian-Sheng Ma*

Responsible Science Editor: *Fang-Fang Ji*  
Proofing Editorial Office Director: *Jin-Lai Wang*

NAME OF JOURNAL  
*World Journal of Gastrointestinal Endoscopy*

ISSN  
ISSN 1948-5190 (online)

LAUNCH DATE  
October 15, 2009

FREQUENCY  
Monthly

EDITORS-IN-CHIEF  
**Atsushi Imagawa, PhD, Director, Doctor**, Department of Gastroenterology, Mitoyo General Hospital, Kan-onji, Kagawa 769-1695, Japan

**Juan Manuel Herrerias Gutierrez, PhD, Academic Fellow, Chief Doctor, Professor**, Unidad de Gestión Clínica de Aparato Digestivo, Hospital Universitario Virgen Macarena, Sevilla 41009, Sevilla, Spain

EDITORIAL BOARD MEMBERS  
All editorial board members resources online at <http://www.wjgnet.com>

[www.wjgnet.com/1948-5190/editorialboard.htm](http://www.wjgnet.com/1948-5190/editorialboard.htm)

EDITORIAL OFFICE  
Xiu-Xia Song, Director  
*World Journal of Gastrointestinal Endoscopy*  
Baishideng Publishing Group Inc  
7901 Stoneridge Drive, Suite 501, Pleasanton, CA 94588, USA  
Telephone: +1-925-2238242  
Fax: +1-925-2238243  
E-mail: [editorialoffice@wjgnet.com](mailto:editorialoffice@wjgnet.com)  
Help Desk: <http://www.fj0publishing.com/helpdesk>  
<http://www.wjgnet.com>

PUBLISHER  
Baishideng Publishing Group Inc  
7901 Stoneridge Drive, Suite 501, Pleasanton, CA 94588, USA  
Telephone: +1-925-2238242  
Fax: +1-925-2238243  
E-mail: [bpgoffice@wjgnet.com](mailto:bpgoffice@wjgnet.com)  
Help Desk: <http://www.fj0publishing.com/helpdesk>  
<http://www.wjgnet.com>

PUBLICATION DATE  
July 16, 2017

COPYRIGHT  
© 2017 Baishideng Publishing Group Inc. Articles published by this Open-Access journal are distributed under the terms of the Creative Commons Attribution Non-commercial License, which permits use, distribution, and reproduction in any medium, provided the original work is properly cited, the use is non commercial and is otherwise in compliance with the license.

SPECIAL STATEMENT  
All articles published in journals owned by the Baishideng Publishing Group (BPG) represent the views and opinions of their authors, and not the views, opinions or policies of the BPG, except where otherwise explicitly indicated.

INSTRUCTIONS TO AUTHORS  
<http://www.wjgnet.com/bpg/gerinfo/204>

ONLINE SUBMISSION  
<http://www.fj0publishing.com>

Retrospective Study

# Use of volumetric laser endomicroscopy for dysplasia detection at the gastroesophageal junction and gastric cardia

Nina Gupta, Uzma Siddiqui, Irving Waxman, Christopher Chapman, Ann Koons, Vesta Valuckaite, Shu-Yuan Xiao, Namrata Setia, John Hart, Vani Konda

Nina Gupta, Department of Medicine, University of Chicago Medical Center, Chicago, IL 60616, United States

Uzma Siddiqui, Irving Waxman, Christopher Chapman, Ann Koons, Vesta Valuckaite, Vani Konda, Center of Endoscopic Research and Therapeutics, Department of Medicine, University of Chicago Medical Center, Chicago, IL 60616, United States

Shu-Yuan Xiao, Namrata Setia, John Hart, Department of Pathology, University of Chicago Medical Center, Chicago, IL 60616, United States

**Author contributions:** Gupta N designed and performed the research, performed the statistical analysis, and wrote the paper; Siddiqui U, Waxman I and Chapman C provided clinical advice and contributed to the data set; Koons A and Valuckaite V provided administrative support for VLE system use and patient participation; Xiao SY, Setia N and Hart J performed histologic analysis; Konda V designed the research and supervised the report

**Institutional review board statement:** This study was reviewed and approved by the IRB committee of the University of Chicago.

**Informed consent statement:** Patients were not required to give informed consent to the study because the analysis used anonymous clinical data that were obtained after the patient agreed to treatment and VLE imaging by written consent.

**Conflict-of-interest statement:** We have no relevant financial relationships to disclose.

**Data sharing statement:** No additional data are available.

**Open-Access:** This article is an open-access article which was selected by an in-house editor and fully peer-reviewed by external reviewers. It is distributed in accordance with the Creative Commons Attribution Non Commercial (CC BY-NC 4.0) license, which permits others to distribute, remix, adapt, build upon this work non-commercially, and license their derivative works on different terms, provided the original work is properly cited and the use is non-commercial. See: <http://creativecommons.org/licenses/by-nc/4.0/>

licenses/by-nc/4.0/

**Manuscript source:** Invited manuscript

**Correspondence to:** Nina Gupta, MD, Department of Medicine, University of Chicago Medical Center, 5841 S. Maryland Ave., MC 3051, Chicago, IL 60616, United States. [nina.gupta@uchospitals.edu](mailto:nina.gupta@uchospitals.edu)  
**Telephone:** +1-773-7026840  
**Fax:** +1-773-7022230

**Received:** September 22, 2016

**Peer-review started:** September 23, 2016

**First decision:** November 21, 2016

**Revised:** January 7, 2017

**Accepted:** April 18, 2017

**Article in press:** April 20, 2017

**Published online:** July 16, 2017

## Abstract

### AIM

To determine specific volumetric laser endomicroscopy (VLE) imaging features associated with neoplasia at the gastroesophageal junction (GEJ) and gastric cardia.

### METHODS

During esophagogastroduodenoscopy for patients with known or suspected Barrett's esophagus, VLE was performed before biopsies were taken at endoscopists' discretion. The gastric cardia was examined on VLE scan from the GEJ (marked by top of gastric folds) to 1 cm distal from the GEJ. The NinePoints VLE console was used to analyze scan segments for characteristics previously found to correlate with normal or abnormal mucosa. Glands were counted individually. Imaging features identified on VLE scan were correlated with biopsy results from the GEJ and cardia region.



## RESULTS

This study included 34 cases. Features characteristic of the gastric cardia (gastric rugae, gastric pit architecture, poor penetration) were observed in all (100%) scans. Loss of classic gastric pit architecture was common and there was no difference between those with neoplasia and without (100% *vs* 74%, *P* = NS). The abnormal VLE feature of irregular surface was more often seen in patients with neoplasia than those without (100% *vs* 18%, *P* < 0.0001), as was heterogeneous scattering (86% *vs* 41%, *P* < 0.005) and presence of anomalous glands (100% *vs* 59%, *P* < 0.05). The number of anomalous glands did not differ between individual histologic subgroups (ANOVA, *P* = NS).

## CONCLUSION

The transition from esophagus to gastric cardia is reliably identified on VLE. Histologically abnormal cardia mucosa produces abnormal VLE features. Optical coherence tomography algorithms can be expanded for use at the GEJ/cardia.

**Key words:** Volumetric laser endomicroscopy; Cardia; Gastroesophageal junction; Barrett's; Optical coherence tomography; Neoplasia

© The Author(s) 2017. Published by Baishideng Publishing Group Inc. All rights reserved.

**Core tip:** This is a retrospective study to explore volumetric laser endomicroscopy (VLE) imaging features associated with neoplasia at the gastroesophageal junction (GEJ) and gastric cardia. Histologically abnormal mucosa due to inflammation or neoplasia more often produces abnormal VLE imaging. Specifically, VLE imaging features of irregular surface, heterogeneous scattering and presence of anomalous glands were more often seen in cases of neoplasia than those without. The GEJ and gastric cardia can be difficult to assess endoscopically for dysplasia, and VLE imaging in this area can aid in a "red-flag" biopsy technique.

Gupta N, Siddiqui U, Waxman I, Chapman C, Koons A, Valuckaite V, Xiao SY, Setia N, Hart J, Konda V. Use of volumetric laser endomicroscopy for dysplasia detection at the gastroesophageal junction and gastric cardia. *World J Gastrointest Endosc* 2017; 9(7): 319-326 Available from: URL: <http://www.wjgnet.com/1948-5190/full/v9/i7/319.htm> DOI: <http://dx.doi.org/10.4253/wjge.v9.i7.319>

## INTRODUCTION

Barrett's esophagus (BE) has been well established as a precursor to esophageal adenocarcinoma (EAC)<sup>[1,2]</sup>. Management of patients diagnosed with BE includes surveillance endoscopy<sup>[3]</sup>. Using the Seattle protocol, targeted biopsies of visible lesions should be taken followed by 4-quadrant biopsies at 2 cm intervals along

the length of the BE segment<sup>[4]</sup>. In cases of known dysplasia, the random 4-quadrant biopsies should be taken every 1 cm<sup>[3]</sup>.

Though currently the standard of care, these techniques are subject to sampling error since random biopsies may miss areas of high-grade dysplasia (HGD) or intramucosal carcinoma (IMC)<sup>[5,6]</sup>. There has been increasing interest in evaluating advanced imaging modalities which may allow for better visualization of the entire upper GI mucosal surface and subsurface in order to increase diagnostic yield with targeted biopsies<sup>[7,8]</sup>.

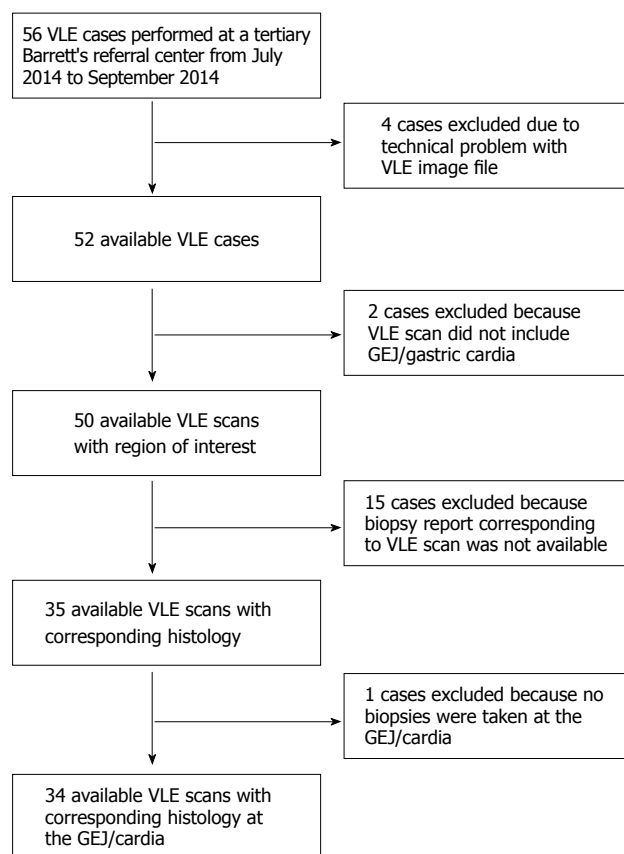
Optical coherence tomography (OCT) is an imaging technique that utilizes low-coherence interferometry to produce high resolution images of biologic tissue by measuring back-scatter light intensity from a near-infrared light source<sup>[9]</sup>. Recently, an OCT based technology called Fourier-domain OCT or volumetric laser endomicroscopy (VLE) is now commercially available and offers higher imaging speed and improved sensitivity as compared to traditional OCT<sup>[10]</sup>. The system allows for real time cross-sectional imaging of the esophagus and proximal stomach as an adjuvant to esophagogastroduodenoscopy (EGD). Surface and subsurface architecture such as mucosal layers, gastric pits, and gland morphology can be identified<sup>[11]</sup>. Several studies have analyzed the correlation between OCT images and histology from biopsy specimens. Specifically, a blinded prospective study found OCT to have an 81% specificity for diagnosing squamous intestinal metaplasia (SIM) at the squamocolumnar junction (SCJ)<sup>[12]</sup>.

Due to the limited knowledge about VLE findings at the gastroesophageal junction (GEJ) and gastric cardia, the purpose of this study is to correlate VLE imaging characteristics with histology in this area in order to determine specific features associated with neoplasia.

## MATERIALS AND METHODS

### Study design

This was a retrospective study conducted at a tertiary care center with a referral BE practice. Patients with known or suspected Barrett's esophagus presented for EGD and VLE. During EGD, biopsies were taken with cold forceps in a targeted and random fashion. Using the NinePoints VLE console, a segment of the VLE scan was delineated from the GEJ (marked by top of gastric folds) to 1 cm distal from the GEJ in order to approximate the gastric cardia. These segments were analyzed frame-by-frame to determine the presence of various imaging features. This analysis was done by a trained reviewer who was initially blinded to the corresponding pathology. Once the image analysis was completed, biopsy results from the GEJ to 1 cm distal to the GEJ were reviewed in order to determine the highest level of pathology found in the segment. Patients were then grouped according to the highest level of pathology indicted on biopsy



**Figure 1 Inclusion and exclusion criteria flowchart.** VLE: Volumetric laser endomicroscopy; GEJ: Gastroesophageal junction.

report: neoplasia, Barrett's with no dysplasia, inflamed cardia, and normal mucosa. Within these histologic subgroups, the frequency of each imaging characteristic was calculated based on the VLE scan analysis that had been done.

### Cases (Figure 1)

From July 2014 to September 2015, forty-six patients underwent a total of fifty-six procedures with VLE scan at a tertiary care center with referral Barrett's practice. These patients were undergoing screening or had known BE and were undergoing endoscopic follow-up. Cases were included in the study if they had a VLE scan available for review and had biopsies taken specifically at the GEJ/gastric cardia.

Cases were excluded if the VLE scan did not include imaging of the GEJ/gastric cardia, biopsies were not taken in this region, or if there was a technical problem with the VLE scan.

Of the fifty-six cases, thirty-four met criteria for inclusion in the study. This study was approved by the Institutional Review Board.

### Endoscopy

All endoscopic procedures were performed by 3 expert endoscopists with experience in detection and management of BE. EGD procedures were performed using the high resolution Olympus GIF-HQ190 gastro-

scope. After insertion of the gastroscope, the esophagus, GEJ and gastric cardia were first examined by WLE for gross evidence of BE. Narrow band imaging features with near focus was also used. Following this, VLE ODFI imaging was performed using the NinePoints system described below. Lastly, biopsies were taken with cold forceps and/or endoscopic mucosal resection at the endoscopist's discretion.

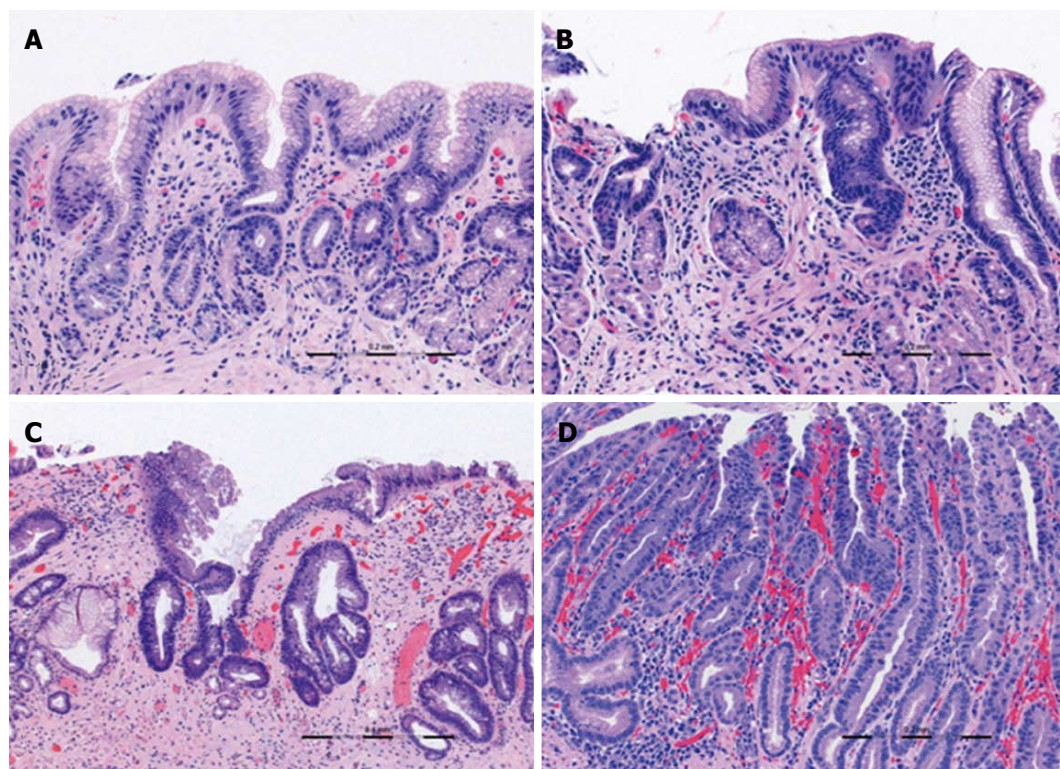
### VLE system

The NinePoints Medical VLE optical frequency domain imaging (ODFI) system was used in this study. Technical specifications of ODFI imaging are described in detail in previous publications<sup>[12]</sup>. Briefly, the NinePoints VLE system includes a balloon centered probe and user console with monitor. The probe consists of a transparent balloon surrounding a laser light source and optical system. Commercially available probe sizes range from 14–25 mm. These are compatible with endoscope channels 2.8 mm and larger. After the balloon is placed into the esophagus and inflated, the central component helically scans while simultaneously retracting throughout the length of the balloon (6 cm). A data set is generated using interferometry and measurement of optical reflection delay from the laser light source. The scan takes 90 s to complete and produces circumferential cross-sectional images of the tissue abutting the edge of the inflated balloon probe. In total, 1200 cross sectional images are obtained from the mucosa to a depth of 3 mm. These images have a resolution of 7  $\mu$ m making it comparable to low-power microscopy.

VLE images were analyzed on a console that allows for simultaneous cross-sectional and longitudinal views. Additionally, a zoom view was available for both dimensions.

### VLE image assessment

All VLE scans were viewed using the NinePoints VLE console. For each scan included in the study, the corresponding endoscopy report was reviewed to determine the centimeter marking at which the top of gastric folds was seen. The corresponding centimeter marking was found on the VLE scan and this was designated as the GEJ. Each scan was assessed frame by frame from the GEJ to 1 cm below the GEJ. Each frame was viewed circumferentially for presence of the specified features which have been found in previous studies to correlate with normal or abnormal mucosa (Table 1). The features of interest were based on OCT criteria set forth by Evans *et al.*<sup>[12]</sup> and included gastric rugae, gastric pit architecture, image penetration, homogenous or heterogeneous scattering, surface to subsurface intensity, and surface irregularity. Following this, another review was done during which the number of typical, atypical, and septated glands were counted individually. Glands were deemed to be atypical if they were dilated or had irregular morphology, similar to the definition used in previous publications<sup>[13]</sup>.



**Figure 2 Correlating histology.** A: Normal gastric cardia with regular gastric pit architecture; B: Inflamed gastric cardia with chronic inflammatory infiltrate and loss of structured gastric pits; C: Low grade dysplasia in Barrett's mucosa with a prominent atypical septated gland; D: High grade dysplasia with cytologic and architectural atypia extending to the surface.

**Table 1 Validated criteria for interpretation of volumetric laser endomicroscopy Images of gastroesophageal tissue<sup>[12]</sup>**

Diagnosis	Imaging criteria on volumetric laser endomicroscopy
Squamous epithelium	Layered horizontal architecture Absence of glands
Gastric cardia	Vertical pit architecture Regular glandular architecture Poor image penetration Homogeneous scattering Regular, broad gastric rugae
Metaplasia	Lack of layered or vertical pit architecture Heterogeneous scattering Irregular surface Atypical glandular structure

### Statistical analysis

Statistical analysis was performed using Microsoft Excel software for Windows.  $\chi^2$  test was used when comparing the proportion of each group that exhibited a particular imaging feature. The *t*-test was used when determining if the number of typical and atypical glands differed between two groups. Analysis of variance (ANOVA) analysis was performed comparing the number of atypical glands between all histologic subgroups. A *P*-value of < 0.05 was considered statistically significant in this study. The statistical methods of this study were reviewed by a biostatistician through the University of Chicago Biostatistics Laboratory which is part of the Department of Public Health Sciences.

## RESULTS

### Patients

Thirty-four patients with VLE imaging and cardia level biopsies were included in the study and had an average age of 63 years (SD 9). Twenty-two patients had undergone prior therapy while twelve had not. Of the 22 patients who had undergone prior treatment, 4 patients had undergone endoscopic mucosal resection (EMR), 6 radiofrequency ablation (RFA), 12 hybrid therapy.

### Endoscopy review

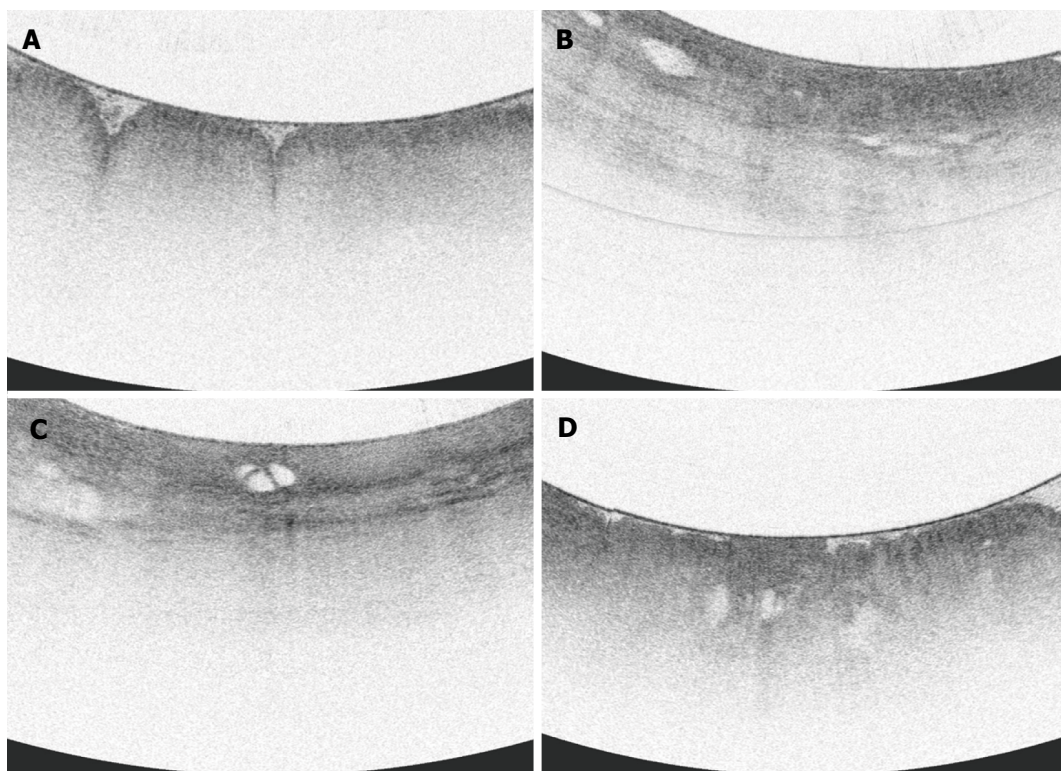
Hiatal hernias were present in 20 cases. In two cases, the patient was status post a fundoplication and in one case the patient was status post a duodenal switch surgery. Visible BE was seen during EGD in 22 cases of which 14 had short segment BE and 8 had long segment BE. Visible lesions at the GEJ/gastric cardia such as nodularity or abnormal vascularity were seen in 4 cases.

### Pathology review (Figure 2)

In patients who had no prior treatment for BE, the highest pathology identified from the GEJ and cardia region was intramucosal carcinoma (IMC)/high grade dysplasia (HGD) in one case, Barrett's with low grade dysplasia (LGD) in four cases, Barrett's without no dysplasia (NDBE) in four cases, and normal mucosa (NL) in three cases.

Among the 22 patients who had previously under-





**Figure 3** Volumetric laser endomicroscopy imaging snapshots. A: Normal gastric cardia with gastric rugae and gastric pit architecture; B: Inflamed gastric cardia with loss of gastric pit architecture and anomalous glands; C: Low grade dysplasia with loss of gastric pit architecture, heterogeneous scattering, anomalous septated gland; D: High grade dysplasia with irregular surface and anomalous glands.

gone treatment, the pre-treatment pathology was IMC in 1 case, HGD in 11 cases, LGD in 8 cases and NDBE in 2 cases and study procedure pathology was LGD in 2 cases, NDBE in 2 cases, inflamed gastric cardia (IGC) in 9 cases, and NL in 9 cases.

### VLE findings (Table 2 and Figure 3)

Of the fifty-six VLE cases available for this study, twelve cases were excluded due to inadequate VLE imaging of the GEJ/cardia or because corresponding biopsies were not taken in that region.

Features characteristic of the gastric cardia (gastric rugae, gastric pit architecture, and poor penetration) were observed in all (100%) scans. A focal area with loss of normal gastric pit architecture was also a prevalent finding, seen in 79.4% of total patients. Heterogeneous scattering was found in exactly half (50%) of patients. Irregular surface was less common, seen in 35% of patients. Similarly, subsurface intensity greater than surface intensity was a rare finding, also occurring only in 6 of 34 patients (17.6%).

All 34 cases showed some typical epithelial glands with a range of 3-56 glands in the GE junction and cardia region examined. Anomalous glands were found in 25 of 34 scans (73.5%) and the number of anomalous glands ranged from 2 to 39.

Focal loss of normal gastric pit architecture was a prevalent finding, notably in patients with neoplasia, non-dysplastic Barrett's, and inflamed cardia. There was no difference of this feature between those with

neoplasia and those without (100% vs 74%,  $P = \text{NS}$ ). However, patients with all types of abnormal cardia (IMC/HGD, LGD, NDBE, IGC) more frequently had loss of normal gastric pit architecture than patients with no mucosal abnormality (90.0% vs 58.3%,  $P < 0.05$ ).

Irregular surface was more often seen in patients with neoplasia than those without neoplasia (100% vs 18.5%,  $P < 0.0001$ ). Irregular surface was also more often seen in those patients with neoplasia compared to those with IGC (100% vs 11.1%,  $P < 0.001$ ).

A greater proportion of patients with neoplasia had heterogeneous scattering as compared to patients without neoplasia (85.7% vs 40.7%,  $P < 0.005$ ). Additionally, patients with neoplasia or non-dysplastic BE analyzed together more often had heterogeneous scattering compared to those with inflamed cardia or normal mucosa (84.6% vs 28.5%,  $P < 0.005$ ).

Anomalous glands were more commonly found in patients with neoplasia as opposed to those without (100% vs 59.2%,  $P < 0.05$ ). When analyzed together, patients with either neoplasia or non-dysplastic BE were found to have anomalous glands more often than those with inflammation or normal mucosa (92.3% vs 52.4%,  $P < 0.05$ ).

In terms of the number of anomalous glands found, ANOVA analysis did not reveal a difference between individual histologic subgroups ( $P = \text{NS}$ ). When grouped, patients with neoplasia did not have a significantly higher number of anomalous glands than all patients without neoplasia ( $t$ -test  $P = \text{NS}$ ). However, patients



**Table 2** Frequency of volumetric laser endomicroscopy imaging features in histologic subgroups *n* (%)

	IMC/HGD ( <i>n</i> = 1)	LGD ( <i>n</i> = 6)	NDBE ( <i>n</i> = 6)	Inflamed cardia ( <i>n</i> = 9)	No diagnostic abnormality ( <i>n</i> = 12)	Neoplastic <sup>1</sup> ( <i>n</i> = 7)	Non-neoplastic <sup>2</sup> ( <i>n</i> = 27)	<i>P</i> -value <sup>3</sup>
Gastric rugae	1 (100)	6 (100)	6 (100)	9 (100)	12 (100)	7 (100)	27 (100)	NS
Gastric pit architecture	1 (100)	6 (100)	6 (100)	9 (100)	12 (100)	7 (100)	27 (100)	NS
Poor penetration	1 (100)	6 (100)	6 (100)	9 (100)	12 (100)	7 (100)	27 (100)	NS
Loss of normal gastric pit architecture	1 (100)	6 (100)	5 (83)	8 (89)	7 (58)	7 (100)	20 (74)	NS
Irregular surface	1 (100)	6 (100)	2 (33)	1 (11)	2 (20)	7 (100)	5 (19)	< 0.0001
Heterogeneous scattering	1 (100)	5 (83)	5 (83)	6 (67)	3 (25)	6 (86)	14 (52)	< 0.005
Epithelial glands	1 (100)	6 (100)	6 (100)	9 (100)	12 (100)	7 (100)	27 (100)	NS
Anomalous glands	1 (100)	6 (100)	5 (83)	6 (67)	5 (42)	7 (100)	16 (59)	< 0.05

<sup>1</sup>Neoplastic: HGD + IMC; <sup>2</sup>Non-neoplastic: NDBE + IGC + NL; <sup>3</sup>*P* value: Neoplastic *vs* non-neoplastic. IMC: Intramucosal carcinoma; HGD: High-grade dysplasia; LGD: Low grade dysplasia; NDBE: Barrett's without no dysplasia; IGC: Inflamed gastric cardia; NL: Normal mucosa; NS: Not significant.

with neoplasia did have significantly more anomalous glands than the subgroup of patients with no mucosal abnormality (*t*-test *P* < 0.05). Septated glands were seen in 8 patients across histology subtypes and did not appear to be associated with higher levels of pathology.

Notably, WLE or narrow band imaging (NBI) failed to detect suspicious lesions within BE at the GEJ or cardia in 3 cases of LGD.

## DISCUSSION

This is the first study to analyze the correlation between imaging features and histology specifically in the GEJ and gastric cardia region. Our first main finding was that all scans exhibited features such as broad based rugae, gastric pits, and poor penetration. These features have been previously described in the gastric cardia, and our findings confirm that these are reliable markers for identifying the transition from tubular esophagus to gastric cardia.

We found that patients with neoplasia at the GEJ and gastric cardia more frequently have abnormal features on VLE imaging. In fact, the loss of normal gastric pit architecture was the only abnormal feature that did not differ significantly between those with neoplasia and those without. This is likely because this feature was loosely defined, and any deviation from the normal gastric pit architecture was counted. In the tubular esophagus, loss of layering is found in cases of NDBE. Thus, it was already known that NDBE can appear with an irregular architecture. In addition, gastric pit architecture appears as subtle alternation of vertical dark and light bands at the mucosal surface and this imaging feature could have been easily disturbed by artifact.

Other studies of VLE have similarly shown this imaging modality to be a safe and useful adjuvant to endoscopy. The safety and feasibility of VLE imaging was evaluated by Wolfson *et al.*<sup>[14]</sup> who were able to successfully perform VLE imaging in 87% of a 100 patient cohort. Probe and console issues were the reason for unsuccessful VLE imaging in 13 patients.

Two minor mucosal lacerations occurred in the study and neither required therapy. The diagnostic utility of VLE has been explored by several groups. Trindade *et al.*<sup>[15]</sup> presented a small case series which found that targeted biopsy by VLE upstaged or diagnosed dysplasia in several patients who then became candidates for ablation or resection. VLE has even been found to detect dysplasia missed by other advanced imaging techniques such as NBI<sup>[16]</sup> and missed on random biopsy<sup>[17]</sup>. Currently, two validated OCT image assessment algorithms exist. The OCT-scoring index (OCT-SI) created in 2005 by Evans *et al.*<sup>[13]</sup> focuses on signal intensity and glandular architecture whereas the newer VLE diagnostic algorithm (VLE-DA) from Leggett *et al.*<sup>[18]</sup> is based on degree of mucosal effacement, surface intensity, and atypical glands. The OCT scoring index (score > 2) was found to have an 83% sensitivity and 75% specificity for dysplasia detection when tested *in-vivo*<sup>[13]</sup>. The VLE-DA performed slightly better with 86% sensitivity, 88% specificity, and 87% diagnostic accuracy, though this is based on an *ex-vivo* study<sup>[18]</sup>. Based on our results, we propose adding "red-flag" features of irregular surface and heterogeneous scattering in the GEJ region to the current protocols in order to capture areas of dysplasia which may otherwise be missed.

These interpretation systems are focused on the tubular esophagus. However, there is a role for expanding the applicability of these criteria to the GEJ/cardia region since this is a difficult place to assess endoscopically and can harbor SIM or dysplasia<sup>[19]</sup>. Cardia tissue may be present at the anatomical region of the cardia but may also be present in a mosaic pattern in Barrett's esophagus amidst intestinal type mucosa and fundic type mucosa. The appearance of cardia type tissue within this mosaic pattern in the tubular esophagus is a potential confounder and may be a cause for false positives in VLE interpretation.

One limitation of this study is that exact correlation of biopsy location to VLE scan location was unable to be performed in this retrospective study. Rather, a circumferential area scanning 1 cm in length was

designated as the GEJ/gastric cardia region and biopsy and imaging features from this area were compared. Currently, general location correlation can be done by matching a registration line on the probe to one of the cross-sectional image. This allows for clock-face orientation. However, to allow for even more precise targeting Suter *et al.*<sup>[20]</sup> validated the recently developed method for using a cautery marking laser coupled into the VLE balloon catheter's optical fiber to mark areas of interest with simultaneously acquiring a VLE image.

The results of this study show a promising role for VLE as an adjuvant for endoscopic assessment of the GEJ and gastric cardia region. The current OCT-scoring algorithms may be expanded to include GEJ/cardia assessment in order to target areas that exhibit irregular surface, heterogeneous scattering, or anomalous glands. A prospective study validating these features utilizing 1:1 histologic correlation will be required. With *in-vivo* laser marking soon to be commercially available, we anticipate with this be a feasible study in the near future. Ultimately, the clinical comparison of yield of VLE targeted biopsy protocol compared with a standard Seattle protocol biopsy protocol will be needed to assess clinical impact.

## COMMENTS

### Background

Barrett's esophagus can lead to the development of esophageal adenocarcinoma. Because of this, patients with known Barrett's esophagus are recommended to have surveillance upper endoscopies. Biopsies are taken of visible lesions as well as in a random fashion according to the Seattle Protocol. However, this technique is suboptimal because occult dysplasia may still be missed. Several adjuvant modalities have been explored to help identify potentially dysplastic areas and allow for more targeted biopsies. Targeted biopsies improve dysplasia detection rates. volumetric laser endomicroscopy (VLE) is a type of OCT imaging modality that produces cross sectional images of the esophagus and proximal stomach. It is currently used for Barrett's surveillance and biopsy targeting in the tubular esophagus. This study explores the use of VLE specifically at the gastroesophageal junction (GEJ) and gastric cardia to determine the correlation of imaging features with neoplasia in this region.

### Research frontiers

In Barrett's esophagus, there is increasing interest in a moving toward targeted biopsies by identifying abnormal "red-flag" areas. The correlation of VLE imaging with histology is increasingly being studied, however many of these studies are *ex-vivo* and their applicability may be limited. Additionally, most studies of VLE are limited to the tubular esophagus even though VLE scans also image the GEJ and gastric cardia. The results of this *in-vivo* study contribute to understanding the applicability of VLE imaging at the GEJ/cardia, as well as contributing to knowledge of correct VLE image interpretation.

### Innovations and breakthroughs

This is the only study known to date which focus on VLE imaging characteristics specifically at the GEJ and gastric cardia. This is important because dysplasia can occur in this region just as it can in the tubular esophagus. Similar to prior VLE studies, this study found that VLE features of abnormal surface architecture and atypical glands are associated with dysplasia. However, this study also found that the scattering pattern of the VLE image (heterogeneous vs homogeneous) was correlated with dysplasia and should be considered in the image assessment.

### Applications

This study suggests that VLE imaging is useful for assessing the GEJ and

gastric cardia. Current OCT scoring systems can be expanded for use in this region.

### Terminology

Barrett's esophagus: A pre-cancerous cellular change in the esophagus that is often the result of longstanding acid reflux. Optical coherence tomography (OCT): An imaging technique that produces high resolution images of biologic tissue by measuring back-scatter light intensity from a near-infrared light source. Volumetric laser endomicroscopy (VLE): A specific type of OCT that is probe-based and produces cross sectional images of the esophagus and gastric cardia.

### Peer-review

This retrospective study correlates VLE imaging characteristics with histology at the GEJ and gastric cardia, which is helpful to determine specific features associated with neoplasia. The authors investigated a new area of invasive gastroenterology field. Their findings have some novel findings and also lead new investigations as a prospective designed.

## REFERENCES

- 1 **Drewitz DJ**, Sampliner RE, Garewal HS. The incidence of adenocarcinoma in Barrett's esophagus: a prospective study of 170 patients followed 4.8 years. *Am J Gastroenterol* 1997; **92**: 212-215 [PMID: 9040193]
- 2 **Sharma P**, Falk GW, Weston AP, Reker D, Johnston M, Sampliner RE. Dysplasia and cancer in a large multicenter cohort of patients with Barrett's esophagus. *Clin Gastroenterol Hepatol* 2006; **4**: 566-572 [PMID: 16630761 DOI: 10.1016/j.cgh.2006.03.001]
- 3 **Evans JA**, Early DS, Fukami N, Ben-Menachem T, Chandrasekhara V, Chathadi KV, Decker GA, Fanelli RD, Fisher DA, Foley KQ, Hwang JH, Jain R, Jue TL, Khan KM, Lightdale J, Malpas PM, Maple JT, Pasha SF, Saltzman JR, Sharaf RN, Shergill A, Dominitz JA, Cash BD. The role of endoscopy in Barrett's esophagus and other premalignant conditions of the esophagus. *Gastrointest Endosc* 2012; **76**: 1087-1094 [PMID: 23164510 DOI: 10.1016/j.gie.2012.08.004]
- 4 **Shaheen NJ**, Falk GW, Iyer PG, Gerson LB. ACG Clinical Guideline: Diagnosis and Management of Barrett's Esophagus. *Am J Gastroenterol* 2016; **111**: 30-50; quiz 51 [PMID: 26526079 DOI: 10.1038/ajg.2015.322]
- 5 **Cameron AJ**, Carpenter HA. Barrett's esophagus, high-grade dysplasia, and early adenocarcinoma: a pathological study. *Am J Gastroenterol* 1997; **92**: 586-591 [PMID: 9128304]
- 6 **Pohl J**, Pech O, May A, Manner H, Fissler-Eckhoff A, Ell C. Incidence of macroscopically occult neoplasias in Barrett's esophagus: are random biopsies dispensable in the era of advanced endoscopic imaging? *Am J Gastroenterol* 2010; **105**: 2350-2356 [PMID: 20664531 DOI: 10.1038/ajg.2010.280]
- 7 **Thosani N**, Abu Dayyeh BK, Sharma P, Aslanian HR, Enestvedt BK, Komanduri S, Manfredi M, Navaneethan U, Maple JT, Pannala R, Parsi MA, Smith ZL, Sullivan SA, Banerjee S. ASGE Technology Committee systematic review and meta-analysis assessing the ASGE Preservation and Incorporation of Valuable Endoscopic Innovations thresholds for adopting real-time imaging-assisted endoscopic targeted biopsy during endoscopic surveillance of Barrett's esophagus. *Gastrointest Endosc* 2016; **83**: 684-98.e7 [PMID: 26874597 DOI: 10.1016/j.gie.2016.01.007]
- 8 **Muthusamy VR**, Kim S, Wallace MB. Advanced Imaging in Barrett's Esophagus. *Gastroenterol Clin North Am* 2015; **44**: 439-458 [PMID: 26021204 DOI: 10.1016/j.gtc.2015.02.012]
- 9 **Testoni PA**. Optical coherence tomography. *ScientificWorldJournal* 2007; **7**: 87-108 [PMID: 17334603 DOI: 10.1100/tsw.2007.29]
- 10 **Vakoc BJ**, Shishko M, Yun SH, Oh WY, Suter MJ, Desjardins AE, Evans JA, Nishioka NS, Tearney GJ, Bouma BE. Comprehensive esophageal microscopy by using optical frequency-domain imaging (with video). *Gastrointest Endosc* 2007; **65**: 898-905 [PMID: 17383652 DOI: 10.1016/j.gie.2006.08.009]
- 11 **Sauk J**, Coron E, Kava L, Suter M, Gora M, Gallagher K, Rosenberg M, Ananthakrishnan A, Nishioka N, Lauwers G, Woods K, Brugge W, Forcione D, Bouma BE, Tearney G. Interobserver agreement for

- the detection of Barrett's esophagus with optical frequency domain imaging. *Dig Dis Sci* 2013; **58**: 2261-2265 [PMID: 23508980 DOI: 10.1007/s10620-013-2625-x]
- 12 **Evans JA**, Bouma BE, Bressner J, Shishkov M, Lauwers GY, Mino-Kenudson M, Nishioka NS, Tearney GJ. Identifying intestinal metaplasia at the squamocolumnar junction by using optical coherence tomography. *Gastrointest Endosc* 2007; **65**: 50-56 [PMID: 17137858 DOI: 10.1016/j.gie.2006.04.027]
  - 13 **Evans JA**, Poneros JM, Bouma BE, Bressner J, Halpern EF, Shishkov M, Lauwers GY, Mino-Kenudson M, Nishioka NS, Tearney GJ. Optical coherence tomography to identify intramucosal carcinoma and high-grade dysplasia in Barrett's esophagus. *Clin Gastroenterol Hepatol* 2006; **4**: 38-43 [PMID: 16431303 DOI: 10.1016/S1542-3565(05)00746-9]
  - 14 **Wolfsen HC**, Sharma P, Wallace MB, Leggett C, Tearney G, Wang KK. Safety and feasibility of volumetric laser endomicroscopy in patients with Barrett's esophagus (with videos). *Gastrointest Endosc* 2015; **82**: 631-640 [PMID: 25956472 DOI: 10.1016/j.gie.2015.03.1968]
  - 15 **Trindade AJ**, George BJ, Berkowitz J, Sejjal DV, McKinley MJ. Volumetric laser endomicroscopy can target neoplasia not detected by conventional endoscopic measures in long segment Barrett's esophagus. *Endosc Int Open* 2016; **4**: E318-E322 [PMID: 27004250 DOI: 10.1055/s-0042-101409]
  - 16 **Atkinson C**, Singh S, Fisichella PM. Volumetric laser endomicroscopy in the detection of neoplastic lesions of the esophagus. *Dig Liver Dis* 2016; **48**: 692 [PMID: 26976783 DOI: 10.1016/j.dld.2016.02.013]
  - 17 **Trindade AJ**, Vamadevan AS, Sejjal DV. Finding a needle in a haystack: use of volumetric laser endomicroscopy in targeting focal dysplasia in long-segment Barrett's esophagus. *Gastrointest Endosc* 2015; **82**: 756; discussion 757 [PMID: 26005011 DOI: 10.1016/j.gie.2015.03.1984]
  - 18 **Leggett CL**, Gorospe EC, Chan DK, Muppa P, Owens V, Smyrk TC, Anderson M, Lutzke LS, Tearney G, Wang KK. Comparative diagnostic performance of volumetric laser endomicroscopy and confocal laser endomicroscopy in the detection of dysplasia associated with Barrett's esophagus. *Gastrointest Endosc* 2016; **83**: 880-888.e2 [PMID: 26344884 DOI: 10.1016/j.gie.2015.08.050]
  - 19 **Pascarenco OD**, Boeriu A, Mocan S, Pascarenco G, Drasoveanu S, Găleanu M, Dobru D. Barrett's esophagus and intestinal metaplasia of gastric cardia: prevalence, clinical, endoscopic and histological features. *J Gastrointestin Liver Dis* 2014; **23**: 19-25 [PMID: 24689092]
  - 20 **Suter MJ**, Gora MJ, Lauwers GY, Arnason T, Sauk J, Gallagher KA, Kava L, Tan KM, Soomro AR, Gallagher TP, Gardecki JA, Bouma BE, Rosenberg M, Nishioka NS, Tearney GJ. Esophageal-guided biopsy with volumetric laser endomicroscopy and laser cautery marking: a pilot clinical study. *Gastrointest Endosc* 2014; **79**: 886-896 [PMID: 24462171 DOI: 10.1016/j.gie.2013.11.016]

**P- Reviewer:** Bilir C, Chen JQ    **S- Editor:** Kong JX    **L- Editor:** A  
**E- Editor:** Lu YJ







Published by **Baishideng Publishing Group Inc**  
7901 Stoneridge Drive, Suite 501, Pleasanton, CA 94588, USA  
Telephone: +1-925-223-8242  
Fax: +1-925-223-8243  
E-mail: [bpgoffice@wjgnet.com](mailto:bpgoffice@wjgnet.com)  
Help Desk: <http://www.f6publishing.com/helpdesk>  
<http://www.wjgnet.com>

