

World Journal of *Gastroenterology*

World J Gastroenterol 2017 May 7; 23(17): 3011-3194



EDITORIAL

- 3011 Esophagitis and its causes: Who is "guilty" when acid is found "not guilty"?

Grossi L, Ciccaglione AF, Marzio L

- 3017 Checkpoint inhibitors in gastrointestinal cancers: Expectations and reality

Kourie HR, Tabchi S, Ghosn M

FRONTIER

- 3022 BRAF inhibitor treatment of melanoma causing colonic polyps: An alternative hypothesis

Kelleher FC, Callaghan G, Gallagher C, O'Sullivan H

REVIEW

- 3030 Genes, emotions and gut microbiota: The next frontier for the gastroenterologist

Panduro A, Rivera-Iñiguez I, Sepulveda-Villegas M, Roman S

- 3043 Macrophage inflammatory protein-2 as mediator of inflammation in acute liver injury

Qin CC, Liu YN, Hu Y, Yang Y, Chen Z

ORIGINAL ARTICLE

Basic Study

- 3053 CXCR7/CXCL12 axis is involved in lymph node and liver metastasis of gastric carcinoma

Xin Q, Zhang N, Yu HB, Zhang Q, Cui YF, Zhang CS, Ma Z, Yang Y, Liu W

- 3066 Low-grade slightly elevated and polypoid colorectal adenomas display differential β -catenin-TCF/LEF activity, c-Myc, and cyclin D1 expression

Yang TW, Gao YH, Ma SY, Wu Q, Li ZF

Retrospective Cohort Study

- 3077 Pancreaticoduodenectomy in patients ≥ 75 years of age: Are there any differences with other age ranges in oncological and surgical outcomes? Results from a tertiary referral center

Paiella S, De Pastena M, Pollini T, Zancan G, Ciprani D, De Marchi G, Landoni L, Esposito A, Casetti L, Malleo G, Marchegiani G, Tuveri M, Marrano E, Maggino L, Secchettin E, Bonamini D, Bassi C, Salvia R

Retrospective Study

- 3084 New flexible endoscopic controlled stapler technique for the treatment of Zenker's diverticulum: A case series

Wilmsen J, Baumbach R, Stüker D, Weingart V, Nesper F, Gölder SK, Pfundstein C, Nötzel EC, Rösch T, Faiss S

- 3092** Comparison of imaging-based and pathological dimensions in pancreatic neuroendocrine tumors
Paiella S, Impellizzeri H, Zanolini E, Marchegiani G, Miotto M, Malpaga A, De Robertis R, D'Onofrio M, Rusev B, Capelli P, Cingarlini S, Butturini G, Davi MV, Amodio A, Bassi C, Scarpa A, Salvia R, Landoni L

- 3099** Octogenarian liver grafts: Is their use for transplant currently justified?
Jiménez-Romero C, Cambra F, Caso O, Manrique A, Calvo J, Marcacuzco A, Rioja P, Lora D, Justo I

- 3111** Rate of local tumor progression following radiofrequency ablation of pathologically early hepatocellular carcinoma
Hao Y, Numata K, Ishii T, Fukuda H, Maeda S, Nakano M, Tanaka K

- 3122** Prognostic value of the neutrophil-to-lymphocyte ratio for hepatocellular carcinoma patients with portal/hepatic vein tumor thrombosis
Li SH, Wang QX, Yang ZY, Jiang W, Li C, Sun P, Wei W, Shi M, Guo RP

Clinical Trials Study

- 3133** Diagnostic value of gadobenate dimeglumine-enhanced hepatocyte-phase magnetic resonance imaging in evaluating hepatic fibrosis and hepatitis
Li XM, Chen Z, Xiao EH, Shang QL, Ma C

Observational Study

- 3142** Consequences of metabolic syndrome on postoperative outcomes after pancreaticoduodenectomy
Zarzavadjian Le Bian A, Fuks D, Chopinet S, Gaujoux S, Cesaretti M, Costi R, Belgaumkar AP, Smadja C, Gayet B
- 3150** Effect of a counseling-supported treatment with the Mediterranean diet and physical activity on the severity of the non-alcoholic fatty liver disease
Gelli C, Tarocchi M, Abenavoli L, Di Renzo L, Galli A, De Lorenzo A

Prospective Study

- 3163** Cost-effectiveness of enhanced liver fibrosis test to assess liver fibrosis in chronic hepatitis C virus and alcoholic liver disease patients
Soto M, Sampietro-Colom L, Lasalvia L, Mira A, Jiménez W, Navasa M
- 3174** Impact of gastroesophageal reflux control through tailored proton pump inhibition therapy or fundoplication in patients with Barrett's esophagus
Baldaque-Silva F, Vieth M, Debel M, Håkanson B, Thorell A, Lunet N, Song H, Mascarenhas-Saraiva M, Pereira G, Lundell L, Marschall HU
- 3184** Comparison of endoscopic ultrasound, computed tomography and magnetic resonance imaging in assessment of detailed structures of pancreatic cystic neoplasms
Du C, Chai NL, Linghu EQ, Li HK, Sun LH, Jiang L, Wang XD, Tang P, Yang J

LETTER TO THE EDITOR

- 3193** Efficacy and safety of stellate ganglion block in chronic ulcerative colitis

Lipov E, Candido K

Contents

World Journal of Gastroenterology
Volume 23 Number 17 May 7, 2017

ABOUT COVER

Editorial board member of *World Journal of Gastroenterology*, Maurizio Degiuli, FRCS (Gen Surg), MD, PhD, Associate Professor, Head, Department of Oncology, University of Turin, School of Medicine, San Luigi University Hospital, Orbassano- Turin 10043, Italy

AIMS AND SCOPE

World Journal of Gastroenterology (*World J Gastroenterol*, *WJG*, print ISSN 1007-9327, online ISSN 2219-2840, DOI: 10.3748) is a peer-reviewed open access journal. *WJG* was established on October 1, 1995. It is published weekly on the 7th, 14th, 21st, and 28th each month. The *WJG* Editorial Board consists of 1375 experts in gastroenterology and hepatology from 68 countries.

The primary task of *WJG* is to rapidly publish high-quality original articles, reviews, and commentaries in the fields of gastroenterology, hepatology, gastrointestinal endoscopy, gastrointestinal surgery, hepatobiliary surgery, gastrointestinal oncology, gastrointestinal radiation oncology, gastrointestinal imaging, gastrointestinal interventional therapy, gastrointestinal infectious diseases, gastrointestinal pharmacology, gastrointestinal pathophysiology, gastrointestinal pathology, evidence-based medicine in gastroenterology, pancreatology, gastrointestinal laboratory medicine, gastrointestinal molecular biology, gastrointestinal immunology, gastrointestinal microbiology, gastrointestinal genetics, gastrointestinal translational medicine, gastrointestinal diagnostics, and gastrointestinal therapeutics. *WJG* is dedicated to become an influential and prestigious journal in gastroenterology and hepatology, to promote the development of above disciplines, and to improve the diagnostic and therapeutic skill and expertise of clinicians.

INDEXING/ABSTRACTING

World Journal of Gastroenterology (*WJG*) is now indexed in Current Contents[®]/Clinical Medicine, Science Citation Index Expanded (also known as SciSearch[®]), Journal Citation Reports[®], Index Medicus, MEDLINE, PubMed, PubMed Central, Digital Object Identifier, and Directory of Open Access Journals. The 2015 edition of Journal Citation Reports[®] released by Thomson Reuters (ISI) cites the 2015 impact factor for *WJG* as 2.787 (5-year impact factor: 2.848), ranking *WJG* as 38 among 78 journals in gastroenterology and hepatology (quartile in category Q2).

FLYLEAF

I-IX Editorial Board

EDITORS FOR THIS ISSUE

Responsible Assistant Editor: *Xiang Li*
Responsible Electronic Editor: *Fen-Fen Zhang*
Proofing Editor-in-Chief: *Lian-Sheng Ma*

Responsible Science Editor: *Ze-Mao Gong*
Proofing Editorial Office Director: *Jin-Lei Wang*

NAME OF JOURNAL
World Journal of Gastroenterology

ISSN
ISSN 1007-9327 (print)
ISSN 2219-2840 (online)

LAUNCH DATE
October 1, 1995

FREQUENCY
Weekly

EDITORS-IN-CHIEF
Damian Garcia-Olmo, MD, PhD, Doctor, Professor, Surgeon, Department of Surgery, Universidad Autonoma de Madrid; Department of General Surgery, Fundacion Jimenez Diaz University Hospital, Madrid 28040, Spain

Stephen C Strom, PhD, Professor, Department of Laboratory Medicine, Division of Pathology, Karolinska Institutet, Stockholm 141-86, Sweden

Andrzej S Tarnawski, MD, PhD, DSc (Med), Professor of Medicine, Chief Gastroenterology, VA Long Beach Health Care System, University of California, Irvine, CA, 5901 E. Seventh Str., Long Beach,

CA 90822, United States

EDITORIAL BOARD MEMBERS
All editorial board members resources online at <http://www.wjgnet.com/1007-9327/editorialboard.htm>

EDITORIAL OFFICE
Jin-Lei Wang, Director
Yuan Qi, Vice Director
Ze-Mao Gong, Vice Director
World Journal of Gastroenterology
Baishideng Publishing Group Inc
7901 Stoneridge Drive, Suite 501,
Pleasanton, CA 94588, USA
Telephone: +1-925-2238242
Fax: +1-925-2238243
E-mail: editorialoffice@wjgnet.com
Help Desk: <http://www.f6publishing.com/helpdesk>
<http://www.wjgnet.com>

PUBLISHER
Baishideng Publishing Group Inc
7901 Stoneridge Drive, Suite 501,
Pleasanton, CA 94588, USA
Telephone: +1-925-2238242
Fax: +1-925-2238243
E-mail: bpgoffice@wjgnet.com
Help Desk: <http://www.f6publishing.com/helpdesk>

<http://www.wjgnet.com>

PUBLICATION DATE
May 7, 2017

COPYRIGHT
© 2017 Baishideng Publishing Group Inc. Articles published by this Open-Access journal are distributed under the terms of the Creative Commons Attribution Non-commercial License, which permits use, distribution, and reproduction in any medium, provided the original work is properly cited, the use is non commercial and is otherwise in compliance with the license.

SPECIAL STATEMENT
All articles published in journals owned by the Baishideng Publishing Group (BPG) represent the views and opinions of their authors, and not the views, opinions or policies of the BPG, except where otherwise explicitly indicated.

INSTRUCTIONS TO AUTHORS
Full instructions are available online at <http://www.wjgnet.com/bpg/gerinfo/204>

ONLINE SUBMISSION
<http://www.f6publishing.com>

Prospective Study

Cost-effectiveness of enhanced liver fibrosis test to assess liver fibrosis in chronic hepatitis C virus and alcoholic liver disease patients

Marcelo Soto, Laura Sampietro-Colom, Luis Lasalvia, Aurea Mira, Wladimiro Jiménez, Miquel Navasa

Marcelo Soto, Fundació Clínic per a la Recerca Biomèdica, 08036 Barcelona, Spain

Laura Sampietro-Colom, Health Technology Assessment Unit, Hospital Clínic, Barcelona, 08036 Barcelona, Spain

Luis Lasalvia, Siemens Healthcare, Tarrytown, NY 10591, United States

Aurea Mira, Wladimiro Jiménez, Department of Clinical Microbiology, Hospital Clínic, 08036 Barcelona, Spain

Aurea Mira, Wladimiro Jiménez, Department of Biomedicine, University of Barcelona, 08036 Barcelona, Spain

Wladimiro Jiménez, Miquel Navasa, IDIBAPS, CIBERehd, 08036 Barcelona, Spain

Miquel Navasa, Liver Unit, Hospital Clínic, 08036 Barcelona, Spain

Author contributions: Soto M, Sampietro-Colom L, Lasalvia L, Mira A, Jiménez W and Navasa M conceived and designed the study; Soto M, Sampietro-Colom L and Navasa M analyzed the data; Soto M, Sampietro-Colom L, Lasalvia L and Navasa M wrote the paper.

Supported by Siemens. Marcelo Soto received financial support from Plataforma ITEMAS PT13/0006/0009 (FCRB PI043029, partially).

Conflict-of-interest statement: Lasalvia L owns shares of Siemens and is a Siemens employee. Navasa M reports grants from Siemens, during the conduct of the study. Jiménez W reports grants from Siemens, prior the conduct of the study. Siemens has issued patents on ELF.

Open-Access: This article is an open-access article which was selected by an in-house editor and fully peer-reviewed by external reviewers. It is distributed in accordance with the Creative Commons Attribution Non Commercial (CC BY-NC 4.0) license, which permits others to distribute, remix, adapt, build upon this

work non-commercially, and license their derivative works on different terms, provided the original work is properly cited and the use is non-commercial. See: <http://creativecommons.org/licenses/by-nc/4.0/>

Manuscript source: Unsolicited manuscript

Correspondence to: Dr. Marcelo Soto, Fundació Clínic per a la Recerca Biomèdica, Roselló 149-153, 08036 Barcelona, Spain. soto@clinic.ub.es
Telephone: +34-93-2271874
Fax: +34-93-2279240

Received: November 4, 2016

Peer-review started: November 21, 2016

First decision: December 28, 2016

Revised: March 3, 2017

Accepted: March 15, 2017

Article in press: March 15, 2017

Published online: May 7, 2017

Abstract

AIM

To assess liver fibrosis (LF) in hepatitis C virus (HCV) and alcoholic liver disease (ALD), estimate health outcomes and costs of new noninvasive testing strategies

METHODS

A Markov model was developed to simulate LF progression in HCV and ALD for a cohort of 40-year-old men with abnormal levels of transaminases. Three different testing alternatives were studied: a single liver biopsy; annual Enhanced liver fibrosis (ELF™) followed by liver stiffness measurement (LSM) imaging as a confirmation test if the ELF test is positive; and annual ELF test without LSM. The analysis was performed from the perspective of a university hospital in Spain.

Clinical data were obtained from published literature. Costs were sourced from administrative databases of the hospital. Deterministic and probabilistic sensitivity analyses were performed.

RESULTS

In HCV patients, annual sequential ELF test/LSM and annual ELF test alone prevented respectively 12.9 and 13.3 liver fibrosis-related deaths per 100 persons tested, compared to biopsy. The incremental cost-effectiveness ratios (ICERs) were respectively €13400 and €11500 per quality-adjusted life year (QALY). In ALD, fibrosis-related deaths decreased by 11.7 and 22.1 per 100 persons tested respectively with sequential ELF test/LSM and annual ELF test alone. ICERs were €280 and €190 per QALY, respectively.

CONCLUSION

The use of the ELF test with or without a confirmation LSM are cost-effective options compared to a single liver biopsy for testing liver fibrosis in HCV and ALD patients in Spain.

Key words: Cost-effectiveness analysis; Liver fibrosis; Noninvasive diagnostic assessment; Alcoholic liver disease; Hepatitis C

© **The Author(s) 2017.** Published by Baishideng Publishing Group Inc. All rights reserved.

Core tip: Noninvasive methods to diagnose liver fibrosis have been proposed as an alternative to liver biopsy in patients with abnormal level of transaminases. In a Markov model, sequential testing with enhanced liver fibrosis (ELF) test followed by liver stiffness measurement (LSM) significantly reduce liver-related lifetime morbidity and mortality, compared with biopsy, in hepatitis C virus (HCV) and alcoholic liver disease patients. Noninvasive methods are also associated with an increase in quality-adjusted life years and costs. Overall, they are cost-effective strategies compared with biopsy. ELF test with or without a confirmation LSM may represent a more affordable strategy than the "treat-all" option in HCV patients.

Soto M, Sampietro-Colom L, Lasalvia L, Mira A, Jiménez W, Navasa M. Cost-effectiveness of enhanced liver fibrosis test to assess liver fibrosis in chronic hepatitis C virus and alcoholic liver disease patients. *World J Gastroenterol* 2017; 23(17): 3163-3173 Available from: URL: <http://www.wjgnet.com/1007-9327/full/v23/i17/3163.htm> DOI: <http://dx.doi.org/10.3748/wjg.v23.i17.3163>

INTRODUCTION

The tremendous advances made in biomedicine and biotechnology during the last decade have led to long-standing "gold standard" invasive diagnostic

and therapeutic procedures being challenged by novel, rapid, and noninvasive methods. Noninvasive diagnosis of liver fibrosis (LF) is one of the fields that has evolved most rapidly in recent years. Diagnosis and follow-up of liver diseases has long relied on liver biopsy, and only recently has its value as a method to assess the severity of LF or to follow-up disease progression been questioned^[1]. Though biopsy is used to stage most cases of liver disease, it is well known that this procedure has several limitations. First, liver biopsies sample only an extremely small portion of the liver (1/50000) and, therefore, sampling errors can occur, especially when smaller sized biopsies are analyzed^[2]. In addition, histological examination is prone to intra- and interobserver variation, which may occur even when widely validated systems are used to score liver damage. Finally, liver biopsy is an invasive procedure with associated morbidity: pain occurs in 20% of patients and major complications (such as bleeding or hemobilia) in 0.5%^[3]. For this reason, liver biopsy has poor tolerance, particularly if it needs to be repeated over time in an individual patient. Moreover, patients are nowadays aware of noninvasive methods to assess the degree of liver damage and so they may be reluctant to undergo an invasive procedure.

Most well-validated noninvasive methods have shown good diagnostic accuracy in identifying patients with a significant degree of fibrosis (*i.e.*, fibrosis expanding beyond the portal tract)^[4]. Sensitivity and specificity above 85% can be considered sufficient due to the lack of relevant clinical consequences for false-positive and false-negative cases. In addition, noninvasive tests can be repeated over time, and in cases of indeterminate results two or more methods can be combined. Although the identification of significant fibrosis (\geq F2) has been regarded as an important target [particularly in the field of viral hepatitis, hepatitis C virus (HCV)], its real value as a static measure of disease severity is arguable. The identification of individuals with bridging fibrosis or liver cirrhosis is more critical: in such cases, sensitivity must be very high, not only due to the potential indication of a specific treatment, but also because screening for hepatocellular carcinoma and gastroesophageal varices is mandatory in patients with liver cirrhosis. Fortunately, the performance of noninvasive methods to assess the presence of cirrhosis is excellent^[4,5].

A different approach is the sequential evaluation of the severity of liver disease when screening candidates for a specific treatment or intervention or a different follow-up, *i.e.*, prioritization in the treatment of HCV, interventions in alcohol consumption or diet, and follow-up of patients with cirrhosis. The sequential use of an enhanced liver fibrosis (ELF) test (as a blood test for patients with suspected liver disease), and LSM (as a specific tool to confirm the presence and severity of liver disease) has been proposed^[6] and, theoretically, it could be easy to apply. However, health and economic implications of this approach have not been reported.

Table 1 Test strategies

Strategy	First test result		Confirmation test result	
	Negative	Positive	Negative	Positive
Single biopsy	No action	Treatment + annual screening for HCC and DC if F = 4	No confirmation test is performed	
Annual ELF/LSM	Annual ELF	LSM	Annual ELF	Treatment + annual screening for HCC and DC if F = 4
Annual ELF	Annual ELF	Treatment + annual screening for HCC and DC if F = 4	No confirmation test is performed	

ELF: Enhanced liver fibrosis test; LSM: Liver stiffness measurement; HCC: Hepatocellular carcinoma; DC: Decompensated cirrhosis.

Therefore, the aim of the current study is to assess both the accuracy of the sequential use of ELF test/LSM in the evaluation of the severity of liver disease and its cost-effectiveness compared with the use of biopsy in patients with HCV or alcoholic liver disease (ALD).

MATERIALS AND METHODS

Model overview

A Markov model was developed to estimate clinical outcomes and associated costs of the different options for assessing liver fibrosis. Three mutually exclusive testing strategies were considered in the analysis (Table 1): (1) a unique percutaneous liver biopsy; (2) annual ELF test with confirmation LSM in case of a positive ELF score; and (3) annual ELF test alone. Outcomes were also computed assuming that no test for liver fibrosis was performed.

In the base case analysis patients were 40-year-old men with abnormal levels of transaminases and diagnosed with HCV or ALD. The analysis was conducted separately for each etiology group. In the Markov model, disease progression is represented as transitions between different health states over time, which was modeled here as a series of 3-mo cycles (Figure 1A and B). Individuals face probabilities of moving to a different state according to their initial and ensuing health condition, treatment, and age. Each health state is associated with specific utility levels and costs (e.g., hospitalization, screening, or follow-up). Clinical outcomes considered in the analysis were the rate of correct diagnosis of each test (true positives and true negatives), frequency of adverse health events, and quality-adjusted life years (QALYs)^[7]. Direct healthcare costs of each testing strategy were estimated from the perspective of a health care provider (Hospital Clínic Barcelona). Differences in QALYs and costs between testing strategies were used to compute incremental cost-effectiveness ratios (ICERs)^[8]. QALYs and costs were evaluated from the beginning of the liver assessment with a lifetime horizon and were discounted at an annual rate of 3% in accordance with common practice in the literature and Catalan Health Service (CatSalut) guidelines^[9-11]. The analysis was performed using STATA 13.1 (StataCorp, College Station, Texas, United States).

Markov model for HCV

The structure of the Markov model used in the analysis is similar to earlier work done for surveillance and treatment of HCV (Figure 1A)^[12-15]. The model is a simplified representation of the natural history of HCV. Fibrosis severity is characterized by three different health states according to the METAVIR scoring system: no fibrosis or mild fibrosis (F0-F1); moderate or severe fibrosis (F2-F3); and compensated cirrhosis (F4). An individual with compensated cirrhosis may develop complications and move to a decompensated cirrhosis (DC) state. Both compensated and decompensated cirrhosis may lead to hepatocellular carcinoma (HCC). Individuals with DC or HCC are candidates for liver transplantation (LTX), which takes them to a post-LTX state or death. The additional following assumptions were made in the present model: (1) fibrosis caused by HCV is not reversible but once SVR has been achieved, progression of fibrosis is permanently stopped^[16]; (2) responders to antiviral treatment achieve SVR in the quarter following the end of the treatment; (3) the efficacy of antiviral treatment is the mean efficacy in untreated genotype 1 as reported by Afdhal *et al.*^[17] (ION-1 Study); and (4) there is no excess mortality associated with LF (including compensated cirrhosis), as the main cause of death of these individuals is accounted for in the model by the other health states (HCC, DC, LTX, and post-LTX states).

In the model HCV individuals that test positive for LF ≥ 2 receive a combination of sofosbuvir and ledipasvir over a 12-wk period. Recent research has shown that the combination of these drugs achieves high levels of sustained virological response (SVR) in both treatment-naïve and treatment-experienced HCV genotype 1 patients^[17-19]. Additional evidence shows that the combination of these two drugs is cost-effective compared with standard of care for most eligible patients in the United States^[20]. We assumed that only individuals that test positive for LF are treated with antivirals. Patients in a DC, HCC, LTX, and post-LTX state received the standard of care.

Markov model for ALD

The model used for ALD (Figure 1B) is based on earlier work on fibrosis progression in heavy drinkers^[21-24].

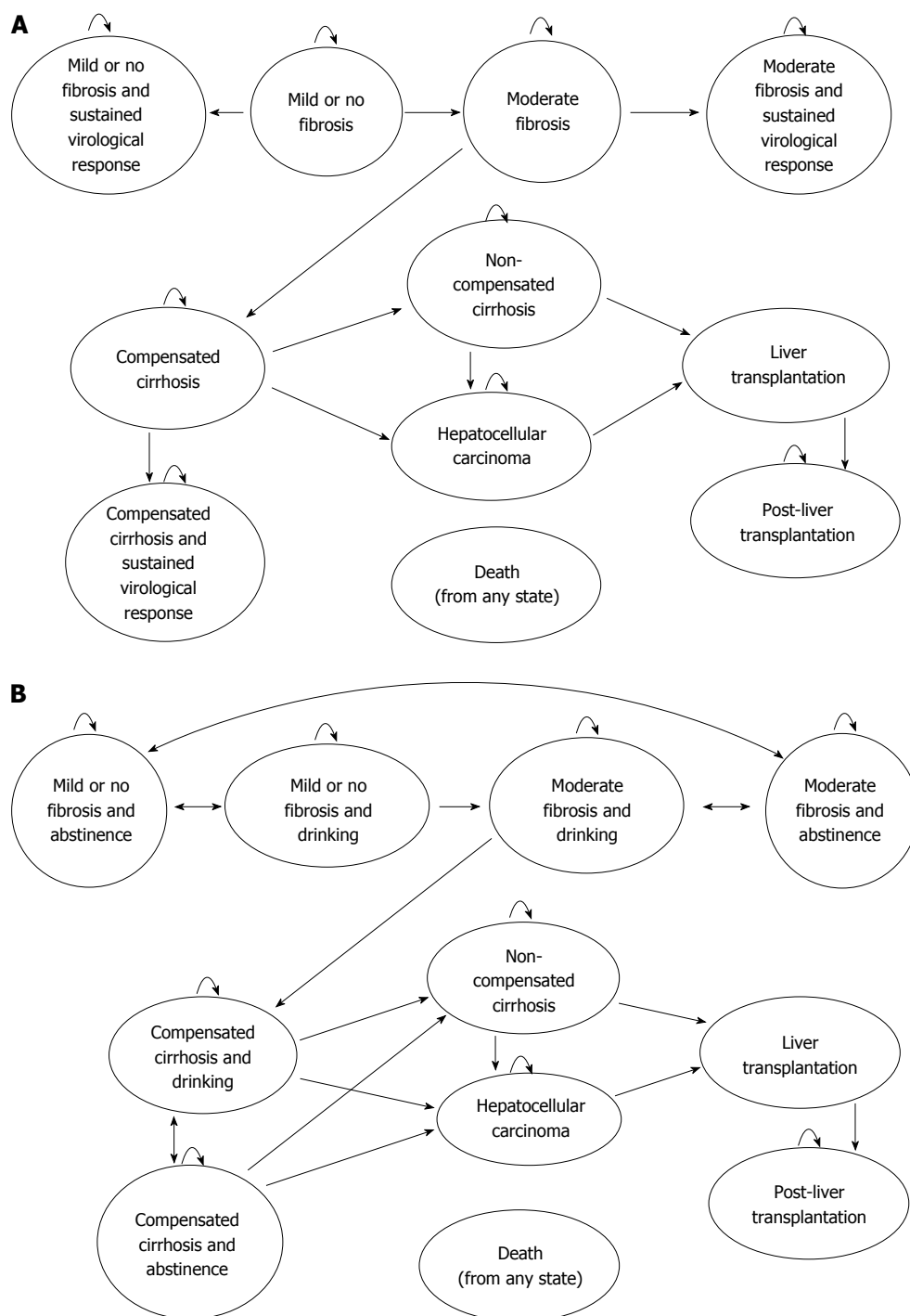


Figure 1 Markov models for hepatitis C virus (A) and alcoholic liver disease (B).

ALD individuals are annually tested for LF and those obtaining an $F \geq 2$ result receive detoxification therapy. In the quarter following the beginning of therapy, some ALD individuals achieve abstinence. Other assumptions specific to the ALD model are: (1) all patients receiving a positive diagnosis of LF agree to undergo detoxification therapy; (2) individuals in an abstinence state may relapse and return to a "drinker" state; (3) fibrosis in its medium/severe (F2-F3) degree is reversible if individuals are in an abstinence

state; and (4) drinkers in a LF state face an elevated mortality risk, as they are confronted with causes of death different from those directly linked to liver disease (e.g., accidents).

Detoxification for ALD individuals with positive LF results consists of psychological and psychiatric therapy provided by Hospital Clínic staff for 1 year. The model assumed that the length of treatment did not depend on the drinking behavior of individuals; that is, both abstainers and individuals with early relapse

received a full year therapy.

Model parameters and data sources

Model parameters are listed in Table 2. Estimates for clinical values (*i.e.*, transition probabilities, test accuracy, effectiveness of antivirals, alcohol abstinence and relapse rates, and utilities) were obtained from a literature search in Medline^[12,15,17,22-36]. Priority was given to estimates for Spanish population or to studies based on a large number of patients. Whenever it was possible, sensitivity and specificity estimates were specific to each etiology group. In ALD patients, for whom no specific information on ELF testing was available, it was assumed that the ELF test had the same accuracy as in HCV individuals^[26]. All specificity and sensitivity parameters were changed in the sensitivity analysis to explore how these assumptions affected baseline results. In the base case analysis, liver biopsy was assumed to have a 90% sensitivity and specificity for both groups of individuals^[25]. Research has shown that biopsy may underdiagnose cirrhosis in up to 14.5% of HVC individuals^[37], and such lower accuracy levels were considered in the sensitivity analysis as well.

In the absence of utility estimates for the Spanish population, we used standardized measures of health status for HCV individuals as reported by Wright *et al.*^[27] (Supplementary Table S1). These values are in accordance with data commonly used in the literature^[12]. Cost data were obtained from Hospital Clínic sources, published literature^[14], and the Spanish Ministry of Health & Social Services and public sources^[38,39] (Supplementary Table S2). Historical costs were adjusted to 2013 prices according to the Spanish price index for hospital services.

Percutaneous biopsy has a mortality risk of about 9 of every 10000 persons tested^[28], which was accounted for in the model. Biopsy is also subject to discomfort and nonfatal adverse events. Although there are no direct measures of the effects of biopsy on utility, recent research assumed that nonfatal adverse events are associated with an annual utility decline of 0.2^[15,28]. Because this assumption disfavors biopsy, sensitivity analyses were performed to assess the consequences on the results if a smaller reduction in utility is assumed.

Wright *et al.*^[27] report a mean utility decrement of 0.11 during treatment with HCV antivirals and a utility rise of 0.05 in individuals for whom treatment is successful. Following the findings of the authors, we assumed a 0.11 utility drop during one quarter for individuals that are treated and a permanent increase of 0.05 for individuals that achieve an SVR state. Utilities for ALD individuals were assumed identical to those used in HCV. Sensitivity analyses were undertaken to explore the robustness of results with changes in these assumptions.

No reliable epidemiological data for prevalence

of LF and cirrhosis in HCV and ALD for the Spanish population were available. Following clinical opinion and earlier work^[15] for the United Kingdom, we assumed a base case prevalence of $F \geq 2$ of 53% among the HCV and ALD population. The corresponding prevalence for compensated cirrhosis was 20%. Prevalence rates were varied in the sensitivity analyses to explore the robustness of base case results.

Sensitivity analysis

One-way deterministic sensitivity analysis was performed to explore the parameters that had the highest impact on QALYs and costs. Low- and high-value parameters used for the analysis are described in Table 2. The general rule for selection of extreme values was to use the confidence interval bounds reported in the cited literature. In some cases, such as the probability of liver transplantation, extreme values corresponded to the minimum and maximum values used in the literature on cost-effectiveness analysis for the treatment of HCV^[12]. The analysis only compared results between biopsy and the sequential ELF test/LSM. Results are presented in the form of tornado diagrams (Figures 2 and 3).

Probabilistic sensitivity analysis was performed by running 10000 Monte Carlo simulations per etiology group. New parameter values were randomly drawn from probability density functions in each iteration.

RESULTS

Base case results: HCV

Table 3 summarizes the results for HCV. Biopsy and ELF test alone had the highest rate of true $F \geq 2$ cases detected (47.7%), and sequential ELF test/LSM produced the largest rate of true negatives (44.5%). In cirrhotic HCV patients, biopsy and ELF test yielded the highest rate of true positives detected (18.1%), and biopsy had the highest rate of true negatives (71.9%).

All testing options resulted in a substantial reduction in the number of events compared with the no-testing option. In particular, sequential ELF test/LSM and ELF test alone reduced the frequency of new cases of cirrhosis to 0.9% and 0.2%, respectively. Similarly, liver fibrosis-related death was 47.9%, 13.5%, 0.6%, and 0.2% under the no-testing, biopsy, sequential ELF test/LSM, and ELF test alone options, respectively.

ELF test alone was the most effective strategy (16.75 QALYs) and it had the highest associated cost (€60443 per patient). The ICERs for ELF test/LSM and ELF test alone were €13438 and €11484 per QALY, respectively.

Base case results: ALD

Results for ALD patients are presented in Table 4. As in the HCV case, biopsy and ELF test alone produced

Table 2 Transition probabilities, accuracy of tests, and other parameters

		Baseline	Range	PSA distribution ¹	Source
Annual transition probabilities in HCV (%)					
From	To				
F0-F1	F2-F3	2.5	2.0-3.1	β (2.5; 0.4)	[27]
F2-F3	F4	3.7	2.5-5.3	β (3.7; 0.7)	[27]
F4	DC	3.9	3.1-5.0	β (3.9; 0.5)	[29]
F4	HCC	3.7	3.2-4.2	β (3.7; 0.25)	[30]
DC	HCC	6.8	-	-	[31]
DC/HCC	LTX	2	1-21	U (1; 21)	[12,32]
DC	Death	12.7	-	-	[31]
HCC	Death	43	-	-	[29]
LTX	Death	19	18-20	-	[33]
Post-LTX	Death	4.6	-	-	[33]
Response rate to treatment in HCV (%)					
F0-F3		100.0	98.0-100	β (99.4; 0.6)	[17]
F4		97.0	84.2-99.9	β (97.0; 2.9)	[17]
Annual transition probabilities in ALD (%)					
From	To				
F0-F1	F2-F3	2.0	1.1-3.2	β (2; 0.5)	[22]
F0-F1 (abstainers)	F2-F3	0.01	-	-	[22]
F2-F3	F4	20	7-33	U (7; 33)	[22]
F2-F3 (abstainers)	F0-F1	26	10-50	U (10; 50)	[34]
F4	DC	23	18-29	β (23; 2.75)	[23]
F4	HCC	1.7	1.2-2.2	β (1.7; 0.25)	[30]
DC	HCC	2.15	-	-	[24]
DC/HCC	LTX	2	1-21	U (1; 21)	[12,32]
DC	Death	17.5	16-19	β (17.5; 0.75)	[24]
HCC	Death	43	-	-	Assumed as for HCV
LTX	Death	19	18-20	-	[33]
Post-LTX	Death	4.6	-	-	[33]
Abstinence rate following therapy (%)					
If diagnosed F2-F3		27	14-43	β (27; 7)	[35]
If diagnosed F4		66	46-82	β (66; 9)	[35]
Probability of relapse before 12 mo (%)					
F2-F3		45	17-77	β (45; 15)	[35]
F4		58	33-88	β (58; 14)	[35]
Test accuracy for F \geq 2 (%)					
ELF Sensitivity		90	85-93	β (90; 1.9)	[26]
ELF Specificity		52	43-61	β (52; 4.6)	[26]
LSM Sensitivity (HCV)		79	75-83	β (79; 2.0)	[15]
LSM Specificity (HCV)		89	84-93	β (89; 2.0)	[15]
LSM Sensitivity (ALD)		81	70-88	β (81; 4.5)	[15]
LSM Specificity (ALD)		92	76-98	β (92; 5.5)	[15]
Biopsy Sensitivity		90	85-95	U (85; 95)	Based on [25]
Biopsy Specificity		90	85-95	U (85; 95)	Based on [25]
Test accuracy for F = 4 (%)					
ELF Sensitivity		90	84-94	-	[26]
ELF Specificity		53	46-59	-	[26]
LSM Sensitivity (HCV)		84	72-91	-	[15]
LSM Specificity (HCV)		77	50-92	-	[15]
LSM Sensitivity (ALD)		86	76-92	-	[15]
LSM Specificity (ALD)		83	74-89	-	[15]
Biopsy Sensitivity		90	85-95	U (85; 95)	Based on [25]
Biopsy Specificity		90	85-95	U (85; 95)	Based on [25]
Other Parameters					
Relative risk of mortality for drinkers		2.0	1.0-4.0	U (1.0; 4.0)	Assumption
Relative risk of DC for F4 abstainers		0.33	0.33-1.0	U (0.33; 1.0)	Based on [36]
Relative risk of HCC for F4 abstainers		0.33	0.33-1.0	U (0.33; 1.0)	Based on [36]
Cohort's initial age (years)		40	30-50	γ (40; 10)	Assumption
Prevalence of LF (F \geq 2) (%)		53	40-66	U (40; 66)	Assumption
Prevalence of cirrhosis (F = 4) (%)		20	14-27	U (14; 27)	Assumption
Death probability related to biopsy (%)		0.09	0.06-0.12	β (0.09; 0.01)	[28]
Prob. of nonfatal adverse event related to Biopsy (%)		0.72	-	-	[28]

¹PSA: Probabilistic sensitivity analysis; In beta (β) and gamma (γ) distributions, parameters correspond to mean and SD; In uniform (U) distributions, parameters correspond to minimum and maximum values. F0-F1: No fibrosis or mild fibrosis; F2-F3: Moderate or severe fibrosis; F4: Cirrhosis. ELF: Enhanced liver fibrosis test; LSM: Liver stiffness measurement; LF: Liver fibrosis; DC: Decompensated cirrhosis; HCC: Hepatocellular carcinoma; LTX: Liver transplantation.

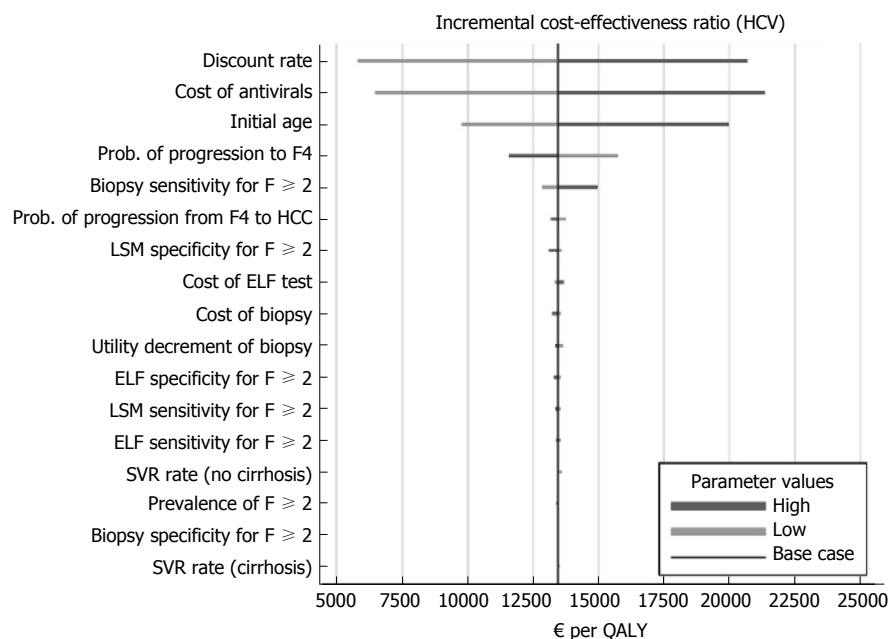


Figure 2 Deterministic sensitivity analysis for hepatitis C virus. HCV: Hepatitis C virus; QALY: Quality-adjusted life year; ELF: Enhanced liver fibrosis test; LSM: Liver stiffness measurement; HCC: Hepatocellular carcinoma.

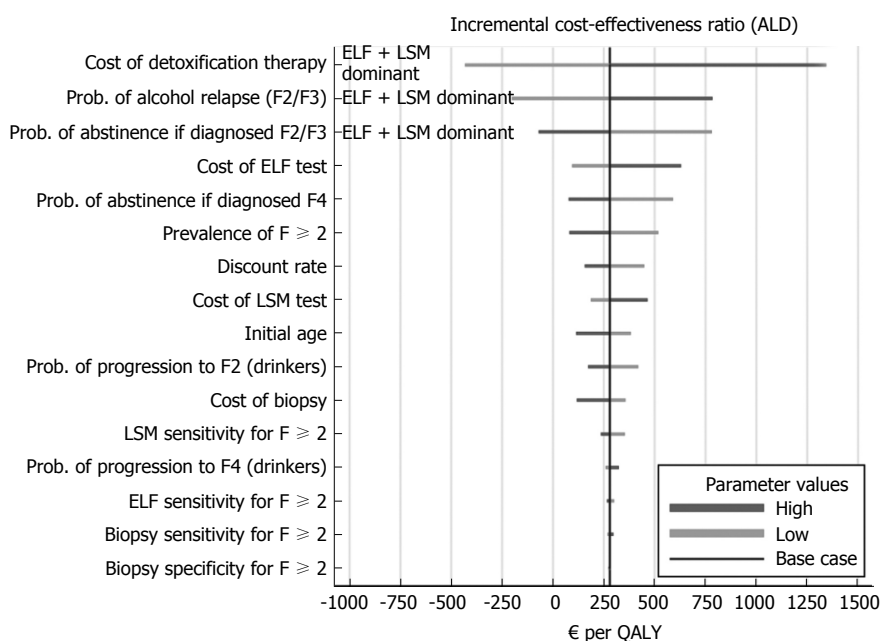


Figure 3 Deterministic sensitivity analysis for alcoholic liver disease. ALD: Alcoholic liver disease; QALY: Quality-adjusted life year; ELF: Enhanced liver fibrosis test; LSM: Liver stiffness measurement.

the highest rate of true $F \geq 2$ detected (47.7%), while ELF test/LSM had the highest rate of true negatives (45.2%). In cirrhotic ALD patients, biopsy and ELF test delivered the highest rate of true positives (18.1%), while ELF test/LSM generated the highest rate of true negatives (73.5%).

ELF test/LSM or ELF test alone reduced the frequency of events significantly although frequency rates remained high. Liver fibrosis-related death was 68.8%, 66.5%, 54.8%, and 44.4% under the no-testing, biopsy, sequential ELF test/LSM, and ELF test

alone options, respectively.

In this type of patients, ELF testing alone produced the largest number of QALYs (11.94) but it was the most costly option (€14661 per patient). The ICERs of sequential ELF test/LSM and ELF test alone are €280 and €189 per QALY, respectively.

Deterministic sensitivity analysis

Results of the deterministic analysis for key parameters in HCV individuals are summarized in Figure 2. The ICER was mostly sensitive to variations in the discount

Table 3 Diagnostic accuracy, health outcomes and costs in hepatitis C virus patients

Diagnostic accuracy (%) ¹		Biopsy	ELF/LSM	ELF
Liver fibrosis (F ≥ 2)				
TP		47.7	37.7	47.7
FN		5.3	15.3	5.3
TN		42.3	44.5	24.4
FP		4.7	2.5	22.6
Cirrhosis (F4)				
TP		18.1	15.2	18.1
FN		2.0	4.9	2.0
TN		71.9	71.2	42.3
FP		8.0	8.6	37.5
Frequency of events (%)	No testing	Single Biopsy	Annual ELF/LSM	Annual ELF
Compensated cirrhosis (new cases)	40.4	16.8	0.9	0.2
Decompensated cirrhosis	24.7	7.0	0.3	0.1
Hepatocellular carcinoma	25.6	7.2	0.3	0.1
Fibrosis-related death	47.9	13.5	0.6	0.2
QALYs, costs and ICER	No testing	Single Biopsy	Annual ELF/LSM	Annual ELF
QALYs	12.36	15.27	16.33	16.75
Cost per patient (€)	24 353	43 447	57 691	60 443
ICER relative to "no testing"		6 561	8 397	8 221
ICER relative to biopsy			13 438	11 484

¹Percentage of cases detected on first test. Initial prevalence: liver fibrosis = 53%; cirrhosis = 20%. TP: True positives; FN: False negatives; TN: True negatives; FP: False positives; QALY: Quality-adjusted life year; ICER: Incremental cost-effectiveness ratio (€ per QALY); ELF: Enhanced liver fibrosis test; LSM: Liver stiffness measurement.

Table 4 Diagnostic accuracy, health outcomes and costs in alcoholic liver disease patients

Diagnostic accuracy (%) ¹		Biopsy	ELF/LSM	ELF
Liver fibrosis (F ≥ 2)				
TP		47.7	38.6	47.7
FN		5.3	14.4	5.3
TN		42.3	45.2	24.4
FP		4.7	1.8	22.6
Cirrhosis (F4)				
TP		18.1	15.6	18.1
FN		2.0	4.5	2.0
TN		71.9	73.5	42.3
FP		8.0	6.4	37.5
Frequency of events (%)	No testing	Single Biopsy	Annual ELF/LSM	Annual ELF
Compensated cirrhosis (new cases)	51.8	49.7	39.0	27.8
Decompensated cirrhosis	64.7	61.4	38.7	30.2
Hepatocellular carcinoma	10.2	9.8	7.3	5.8
Fibrosis-related death	68.8	66.5	54.8	44.4
QALYs, costs and ICER	No testing	Single Biopsy	Annual ELF/LSM	Annual ELF
QALYs	9.2	9.55	10.88	11.94
Cost per patient (€)	13 985	14 209	14 581	14 661
ICER relative to "no testing"		640	355	247
ICER relative to biopsy			280	189

¹Percentage of cases detected on first test. Initial prevalence: liver fibrosis = 53%; cirrhosis = 20%. TP: True positives; FN: False negatives; TN: True negatives; FP: False positives; QALY: Quality-adjusted life year; ICER: Incremental cost-effectiveness ratio (€ per QALY); ELF: Enhanced liver fibrosis test; LSM: Liver stiffness measurement.

rate, cost of antivirals, and the cohort's initial age. The lowest ICER (€5800 per QALY) was obtained when the discount rate was 0, whereas the highest ICER (€21400 per QALY) occurred when the assumed cost of antivirals was high (€72000 for a 12-wk treatment). The remaining parameters of the model had a minor

impact.

Deterministic sensitivity results for ALD are shown in Figure 3. Sequential ELF test/LSM was superior to biopsy when the assumed cost of detoxification therapy was low (€173 per individual treated). ELF test/LSM was also superior to biopsy when individuals diagnosed

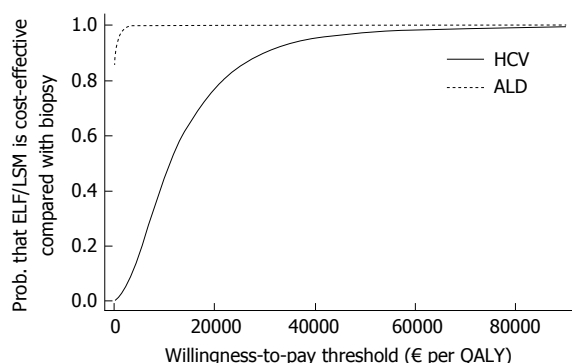


Figure 4 Cost-effectiveness acceptability curves in hepatitis C virus and alcoholic liver disease. HCV: Hepatitis C virus; ALD: Alcoholic liver disease; QALY: Quality-adjusted life year; ELF: Enhanced liver fibrosis test; LSM: Liver stiffness measurement.

as F2/F3 had a high probability of abstinence (43%) and a low probability of relapse (17%) within a year. In all other cases studied, the ICER of ELF test/LSM compared to biopsy was smaller than €1400 per QALY.

Probabilistic sensitivity analysis results

Figure 4 presents cost-effectiveness acceptability curves^[40] for HCV and ALD. The figure shows the probability that sequential ELF test/LSM is cost-effective compared to biopsy at different levels of willingness-to-pay (WTP) for one QALY. At a WTP of €30000 per QALY the probability that ELF test/LSM is cost-effective is 90.1% and > 99.9% in HCV and ALD, respectively. For this last etiology group, ELF test/LSM is cost-effective with a probability larger than 85% at any WTP.

DISCUSSION

To our knowledge, this is the first study that estimates the cost-effectiveness of the sequential use of ELF test/LSM for the assessment of liver fibrosis. Our findings show that ELF test/LSM is a cost-effective strategy for a WTP of €30000 per QALY, the cost-effectiveness threshold commonly used in Spain^[41]. At this threshold, the net health benefit^[42] of ELF test/LSM compared to biopsy is €17526 and €39450 per HCV and ALD patient, respectively. The probabilistic sensitivity analysis showed that the results were robust.

Previous research for HCV patients in the UK showed that treatment with antiviral agents without liver testing was the most cost-effective strategy to reduce liver fibrosis occurrence and progression^[15]. However, that study was based on interferon-containing options. New, interferon-free options are costly and providing all HCV patients with the treatment can be a financially unsustainable strategy for some countries. In this situation, an ELF test/LSM strategy may help to balance sustainability with right care since it would be able to promptly identify non-invasively those HCV patients in early stages of liver

fibrosis and to grant them access to treatment.

In ALD patients, sequential ELF test/LSM and ELF test alone are both cost-effective strategies compared with biopsy. Moreover, for this group of patients ELF testing alone is only slightly more expensive than the ELF test/LSM strategy. Therefore, ELF testing alone is a highly cost-effective strategy for ALD patients.

Finally, because ELF can be easily performed at primary health care centers it can provide a more equitable access to early diagnostic and treatment for HCV and ALD patients with incipient liver fibrosis. Moreover, the sequential use of ELF test/LSM may contribute to a better selection of patients in need of treatment, thus improving on care appropriateness and potentially reducing costs for both patients and hospitals.

The study has several limitations. First, numerous parameters were sourced from small or single studies. This was especially apparent for information regarding ELF test accuracy and the efficacy of detoxification therapy and alcohol relapse rates, among others. Further research is needed to address this shortcoming. Additionally, most of the clinical data and prevalence rates used in the analysis came from studies carried out outside of Spain. Although discrepancies in clinical data across countries may affect country-specific effectiveness and, therefore, cost-effectiveness ratios, we do not expect important differences in patient characteristics and professional expertise in our country compared to others. Moreover, the sensitivity analysis showed that results were robust to wide variations in the underlying clinical parameters. Secondly, the estimates for sensitivity (90%) and specificity (90%) of liver biopsy were obtained from a study whose estimates are themselves based on clinician opinion^[25]. Nevertheless, the sensitivity analysis showed that variations in the accuracy of biopsy did not affect the main results. Finally, cost estimates were obtained from our hospital or from Spanish sources. Differences in economic data across countries may affect the final results. However, the wide variation in the unit costs that we have used in the sensitivity analysis systematically corroborated that the sequential ELF test/LSM strategy was cost-effective.

In conclusion, testing for liver fibrosis annually with sequential ELF test/LSM or ELF test alone resulted in a substantial reduction in the number of events (cirrhosis, hepatocellular carcinoma, and fibrosis-related death) and a significant increase in QALYs for HCV and ALD patients, compared with a single liver biopsy. Out of the three options analyzed, ELF testing alone had the best health outcomes for both etiology groups (*i.e.*, HCV and ALD), but it was also the most costly of the strategies. In light of these results, sequential ELF test/LSM can be considered as an option providing a balance between proper care and costs, especially in HCV patients. In ALD, the preferred strategy is ELF testing alone as its low incremental cost and large

associated health gains make it a highly cost-effective option.

ACKNOWLEDGMENTS

We are grateful to Krzysztof Lach, Gemma Lorente and Laia Rodríguez from Hospital Clínic Barcelona for their valuable assistance.

COMMENTS

Background

The tremendous advances made in biomedicine and biotechnology during the last decade have led to long-standing "gold standard" invasive diagnostic and therapeutic procedures being challenged by novel, rapid, and noninvasive methods. Noninvasive diagnosis of liver fibrosis (LF) is one of the fields that has evolved most rapidly in recent years. Diagnosis and follow-up of liver diseases has long relied on liver biopsy, and only recently has its value as a method to assess the severity of LF or to follow-up disease progression been questioned. Though biopsy is used to stage most cases of liver disease, it is well known that this procedure has several limitations.

Research frontiers

The aim of the current study is to assess both the accuracy of the sequential use of enhanced liver fibrosis (ELF) test/liver stiffness measurement (LSM) in the evaluation of the severity of liver disease and its cost-effectiveness compared with the use of biopsy in patients with hepatitis C virus (HCV) or alcoholic liver disease (ALD).

Innovations and breakthroughs

In HCV patients, annual sequential ELF test/LSM and annual ELF test alone prevented respectively 12.9 and 13.3 liver fibrosis-related deaths per 100 persons tested, compared to biopsy. The incremental cost-effectiveness ratios (ICERs) were respectively €13400 and €11500 per quality-adjusted life year (QALY). In ALD, fibrosis-related deaths decreased by 11.7 and 22.1 per 100 persons tested respectively with sequential ELF test/LSM and annual ELF test alone. ICERs were €280 and €190 per QALY, respectively.

Applications

The authors found that the use of the ELF test with or without a confirmation LSM are cost-effective options compared to a single liver biopsy for testing liver fibrosis in HCV and ALD patients in Spain.

Peer-review

This is a very clearly written paper, and the authors make a good case for why the topic is an important one, particularly in a medical landscape that is changing rapidly as new technologies become available.

REFERENCES

- 1 **Castera L.** Assessing liver fibrosis. *Expert Rev Gastroenterol Hepatol* 2008; **2**: 541-552 [PMID: 19072402 DOI: 10.1586/17474124.2.4.541]
- 2 **Bedossa P, Dargère D, Paradis V.** Sampling variability of liver fibrosis in chronic hepatitis C. *Hepatology* 2003; **38**: 1449-1457 [PMID: 14647056 DOI: 10.1053/jhep.2003.09022]
- 3 **Cadranel JF, Rufat P, Degos F.** Practices of liver biopsy in France: results of a prospective nationwide survey. For the Group of Epidemiology of the French Association for the Study of the Liver (AFEF). *Hepatology* 2000; **32**: 477-481 [PMID: 10960438 DOI: 10.1053/jhep.2000.16602]
- 4 **Martínez SM, Crespo G, Navasa M, Forns X.** Noninvasive assessment of liver fibrosis. *Hepatology* 2011; **53**: 325-335 [PMID: 21254180 DOI: 10.1002/hep.24013]
- 5 **Berzigotti A, Ashkenazi E, Reverter E, Abalde JG, Bosch J.** Non-invasive diagnostic and prognostic evaluation of liver cirrhosis and portal hypertension. *Dis Markers* 2011; **31**: 129-138 [PMID: 22045398 DOI: 10.1155/2011/954812]
- 6 **Crespo G, Fernández-Varo G, Mariño Z, Casals G, Miquel R, Martínez SM, Gilabert R, Forns X, Jiménez W, Navasa M.** ARFI, FibroScan, ELF, and their combinations in the assessment of liver fibrosis: a prospective study. *J Hepatol* 2012; **57**: 281-287 [PMID: 22521355 DOI: 10.1016/j.jhep.2012.03.016]
- 7 **Weinstein MC, Torrance GW, McGuire A.** QALYs: The basics. In: *Value in Health*. 2009
- 8 **Drummond MF, Sculpher MJ, Torrance GW, O'Brien BJ, Stoddart GL.** Methods for the economic evaluation of health care programmes. 3rd ed. Oxford: Oxford University Press, 2005
- 9 **Gold MR, Siegel JE, Russell LB, Weinstein MC.** Cost-effectiveness in health and medicine. *J Ment Health Policy Econ* 1996; **2**: 425
- 10 National Institute for Health and Care Excellence. Guide to the Methods of Technology Appraisal. London: NICE, 2013
- 11 **Puig J, Oliva J, Trapero M, Perpi-án JM, Brosa M.** Guía y recomendaciones para la realización y presentación de evaluaciones económicas y análisis de impacto presupuestario de medicamentos en el ámbito de CatSalut. 2014
- 12 **Townsend R, McEwan P, Kim R, Yuan Y.** Structural frameworks and key model parameters in cost-effectiveness analyses for current and future treatments of chronic hepatitis C. *Value Health* 2011; **14**: 1068-1077 [PMID: 22152176 DOI: 10.1016/j.jval.2011.06.006]
- 13 **Canavan C, Eisenburg J, Meng L, Corey K, Hur C.** Ultrasound elastography for fibrosis surveillance is cost effective in patients with chronic hepatitis C virus in the UK. *Dig Dis Sci* 2013; **58**: 2691-2704 [PMID: 23720196 DOI: 10.1007/s10620-013-2705-y]
- 14 **San Miguel R, Gimeno-Ballester V, Blázquez A, Mar J.** Cost-effectiveness analysis of sofosbuvir-based regimens for chronic hepatitis C. *Gut* 2015; **64**: 1277-1288 [PMID: 25311032 DOI: 10.1136/gutjnl-2014-307772]
- 15 **Crossan C, Tsochatzis EA, Longworth L, Gurusamy K, Davidson B, Rodríguez-Perálvarez M, Mantzoukis K, O'Brien J, Thalassinos E, Papastergiou V, Burroughs A.** Cost-effectiveness of non-invasive methods for assessment and monitoring of liver fibrosis and cirrhosis in patients with chronic liver disease: systematic review and economic evaluation. *Health Technol Assess* 2015; **19**: 401-409, v-vi [PMID: 25633908 DOI: 10.3310/hta19090]
- 16 **Lee YA, Friedman SL.** Reversal, maintenance or progression: what happens to the liver after a virologic cure of hepatitis C? *Antiviral Res* 2014; **107**: 23-30 [PMID: 24726738 DOI: 10.1016/j.antiviral.2014.03.012]
- 17 **Afdhal N, Zeuzem S, Kwo P, Chojkier M, Gitlin N, Puoti M, Romero-Gomez M, Zarski JP, Agarwal K, Buggisch P, Foster GR, Bräu N, Buti M, Jacobson IM, Subramanian GM, Ding X, Mo H, Yang JC, Pang PS, Symonds WT, McHutchison JG, Muir AJ, Mangia A, Marcellin P.** Ledipasvir and sofosbuvir for untreated HCV genotype 1 infection. *N Engl J Med* 2014; **370**: 1889-1898 [PMID: 24725239 DOI: 10.1056/NEJMoa1402454]
- 18 **Afdhal N, Reddy KR, Nelson DR, Lawitz E, Gordon SC, Schiff E, Nahass R, Ghalib R, Gitlin N, Herring R, Lalezari J, Younes ZH, Pockros PJ, Di Bisceglie AM, Arora S, Subramanian GM, Zhu Y, Dvory-Sobol H, Yang JC, Pang PS, Symonds WT, McHutchison JG, Muir AJ, Sulkowski M, Kwo P.** Ledipasvir and sofosbuvir for previously treated HCV genotype 1 infection. *N Engl J Med* 2014; **370**: 1483-1493 [PMID: 24725238 DOI: 10.1056/NEJMoa1316366]
- 19 **Kowdley KV, Gordon SC, Reddy KR, Rossaro L, Bernstein DE, Lawitz E, Shiffman ML, Schiff E, Ghalib R, Ryan M, Rustgi V, Chojkier M, Herring R, Di Bisceglie AM, Pockros PJ, Subramanian GM, An D, Svarovskaia E, Hyland RH, Pang PS, Symonds WT, McHutchison JG, Muir AJ, Pound D, Fried MW.** Ledipasvir and sofosbuvir for 8 or 12 weeks for chronic HCV without cirrhosis. *N Engl J Med* 2014; **370**: 1879-1888 [PMID: 24720702 DOI: 10.1056/NEJMoa1402355]
- 20 **Chhatwal J, Kanwal F, Roberts MS, Dunn MA.** Cost-effectiveness

- and budget impact of hepatitis C virus treatment with sofosbuvir and ledipasvir in the United States. *Ann Intern Med* 2015; **162**: 397-406 [PMID: 25775312 DOI: 10.7326/M14-1336]
- 21 **Mathurin P**, Beuzin F, Louvet A, Carrié-Ganne N, Balian A, Trinchet JC, Dalsoglio D, Prevot S, Naveau S. Fibrosis progression occurs in a subgroup of heavy drinkers with typical histological features. *Aliment Pharmacol Ther* 2007; **25**: 1047-1054 [PMID: 17439505 DOI: 10.1111/j.1365-2036.2007.03302.x]
 - 22 **Teli MR**, Day CP, Burt AD, Bennett MK, James OF. Determinants of progression to cirrhosis or fibrosis in pure alcoholic fatty liver. *Lancet* 1995; **346**: 987-990 [PMID: 7475591 DOI: 10.1016/S0140-6736(95)91685-7]
 - 23 **Jepsen P**, Ott P, Andersen PK, Sørensen HT, Vilstrup H. Clinical course of alcoholic liver cirrhosis: a Danish population-based cohort study. *Hepatology* 2010; **51**: 1675-1682 [PMID: 20186844 DOI: 10.1002/hep.23500]
 - 24 **Alvarez MA**, Cirera I, Solà R, Bargalló A, Morillas RM, Planas R. Long-term clinical course of decompensated alcoholic cirrhosis: a prospective study of 165 patients. *J Clin Gastroenterol* 2011; **45**: 906-911 [PMID: 21814145 DOI: 10.1097/MCG.0b013e3182284e13]
 - 25 **Mehta SH**, Lau B, Afdhal NH, Thomas DL. Exceeding the limits of liver histology markers. *J Hepatol* 2009; **50**: 36-41 [PMID: 19012989 DOI: 10.1016/j.jhep.2008.07.039]
 - 26 **Martínez SM**, Fernández-Varo G, González P, Sampson E, Bruguera M, Navasa M, Jiménez W, Sánchez-Tapias JM, Forns X. Assessment of liver fibrosis before and after antiviral therapy by different serum marker panels in patients with chronic hepatitis C. *Aliment Pharmacol Ther* 2011; **33**: 138-148 [PMID: 21083589 DOI: 10.1111/j.1365-2036.2010.04500.x]
 - 27 **Wright M**, Grieve R, Roberts J, Main J, Thomas HC; UK Mild Hepatitis C Trial Investigators. Health benefits of antiviral therapy for mild chronic hepatitis C: randomised controlled trial and economic evaluation. *Health Technol Assess* 2006; **10**: 111-113, iii [PMID: 16750059]
 - 28 **Stevenson M**, Lloyd-Jones M, Morgan MY, Wong R. Non-invasive diagnostic assessment tools for the detection of liver fibrosis in patients with suspected alcohol-related liver disease: a systematic review and economic evaluation. *Health Technol Assess* 2012; **16**: 171-174 [PMID: 22333291 DOI: 10.3310/hta16040]
 - 29 **Fattovich G**, Giustina G, Degos F, Tremolada F, Diodati G, Almasio P, Nevens F, Solinas A, Mura D, Brouwer JT, Thomas H, Njapoum C, Casarin C, Bonetti P, Fuschi P, Basho J, Tocco A, Bhalla A, Galassini R, Noventa F, Schalm SW, Realdi G. Morbidity and mortality in compensated cirrhosis type C: a retrospective follow-up study of 384 patients. *Gastroenterology* 1997; **112**: 463-472 [PMID: 9024300 DOI: 10.1053/gast.1997.v112.pm9024300]
 - 30 **Fattovich G**, Stroffolini T, Zagni I, Donato F. Hepatocellular Carcinoma in Cirrhosis: Incidence and Risk Factors. *Gastroenterology* 2004; **127**: S35-S50
 - 31 **Planas R**, Ballesté B, Alvarez MA, Rivera M, Montoliu S, Galeras JA, Santos J, Coll S, Morillas RM, Solà R. Natural history of decompensated hepatitis C virus-related cirrhosis. A study of 200 patients. *J Hepatol* 2004; **40**: 823-830 [PMID: 15094231 DOI: 10.1016/j.jhep.2004.01.005]
 - 32 **Siebert U**, Sroczynski G, Rossol S, Wasem J, Ravens-Sieberer U, Kurth BM, Manns MP, McHutchison JG, Wong JB. Cost effectiveness of peginterferon alpha-2b plus ribavirin versus interferon alpha-2b plus ribavirin for initial treatment of chronic hepatitis C. *Gut* 2003; **52**: 425-432 [PMID: 12584228 DOI: 10.1136/gut.52.3.425]
 - 33 **Adam R**, McMaster P, O'Grady JG, Castaing D, Klempnauer JL, Jamieson N, Neuhaus P, Lerut J, Salizzoni M, Pollard S, Muhlbacher F, Rogiers X, Garcia Valdecasas JC, Berenguer J, Jaeck D, Moreno Gonzalez E. Evolution of liver transplantation in Europe: report of the European Liver Transplant Registry. *Liver Transpl* 2003; **9**: 1231-1243 [PMID: 14625822 DOI: 10.1016/j.lts.2003.09.018]
 - 34 **Kim MY**, Cho MY, Baik SK, Jeong PH, Suk KT, Jang YO, Yea CJ, Kim JW, Kim HS, Kwon SO, Yoo BS, Kim JY, Eom MS, Cha SH, Chang SJ. Beneficial effects of candesartan, an angiotensin-blocking agent, on compensated alcoholic liver fibrosis - a randomized open-label controlled study. *Liver Int* 2012; **32**: 977-987 [PMID: 22364262 DOI: 10.1111/j.1478-3231.2012.02774.x]
 - 35 **Trabut JB**, Plat A, Thepot V, Fontaine H, Vallet-Pichard A, Nalpas B, Pol S. Influence of liver biopsy on abstinence in alcohol-dependent patients. *Alcohol Alcohol* 2008; **43**: 559-563 [PMID: 18621800 DOI: 10.1093/alcac/agn046]
 - 36 **Tome S**, Lucey MR. Review article: current management of alcoholic liver disease. *Aliment Pharmacol Ther* 2004; **19**: 707-714 [PMID: 15043511 DOI: 10.1111/j.1365-2036.2004.01881.x]
 - 37 **Regev A**, Berho M, Jeffers LJ, Milikowski C, Molina EG, Prysopoulou NT, Feng ZZ, Reddy KR, Schiff ER. Sampling error and intraobserver variation in liver biopsy in patients with chronic HCV infection. *Am J Gastroenterol* 2002; **97**: 2614-2618 [PMID: 12385448 DOI: 10.1111/j.1572-0241.2002.06038.x]
 - 38 Ministerio de Sanidad SS e I. Registro de Altas de los Hospitales Generales del Sistema Nacional de Salud, 2013. Cited 2015-04-21. Available from: URL: <http://www.msssi.gob.es/estadEstudios/estadisticas/cmbd.htm>
 - 39 Vidal Vademecum Spain. VADEMECUM. Cited 2015-05-05. Available from: URL: <http://www.vademecum.es/>
 - 40 **Fenwick E**, O'Brien BJ, Briggs A. Cost-effectiveness acceptability curves--facts, fallacies and frequently asked questions. *Health Econ* 2004; **13**: 405-415 [PMID: 15127421 DOI: 10.1002/hec.903]
 - 41 **Sacristán JA**, Oliva J, Del Llano J, Prieto L, Pinto JL. [What is an efficient health technology in Spain?]. *Gac Sanit* 2002; **16**: 334-343 [PMID: 12113733 DOI: 10.1016/S0213-9111(02)71933-X]
 - 42 **Zethraeus N**, Johannesson M, Jönsson B, Löthgren M, Tambour M. Advantages of using the net-benefit approach for analysing uncertainty in economic evaluation studies. *Pharmacoeconomics* 2003; **21**: 39-48 [PMID: 12484802 DOI: 10.2165/00019053-200321010-00003]

P- Reviewer: Snell C, Traubt JB **S- Editor:** Yu J **L- Editor:** A
E- Editor: Zhang FF





Published by **Baishideng Publishing Group Inc**
7901 Stoneridge Drive, Suite 501, Pleasanton, CA 94588, USA
Telephone: +1-925-223-8242
Fax: +1-925-223-8243
E-mail: bpgoffice@wjgnet.com
Help Desk: <http://www.f6publishing.com/helpdesk>
<http://www.wjgnet.com>



ISSN 1007-9327



9 771007 932045