

# World Journal of *Gastroenterology*

*World J Gastroenterol* 2017 May 7; 23(17): 3011-3194



**EDITORIAL**

- 3011** Esophagitis and its causes: Who is "guilty" when acid is found "not guilty"?

*Grossi L, Ciccaglione AF, Marzio L*

- 3017** Checkpoint inhibitors in gastrointestinal cancers: Expectations and reality

*Kourie HR, Tabchi S, Ghosn M*

**FRONTIER**

- 3022** BRAF inhibitor treatment of melanoma causing colonic polyps: An alternative hypothesis

*Kelleher FC, Callaghan G, Gallagher C, O'Sullivan H*

**REVIEW**

- 3030** Genes, emotions and gut microbiota: The next frontier for the gastroenterologist

*Panduro A, Rivera-Iñiguez I, Sepulveda-Villegas M, Roman S*

- 3043** Macrophage inflammatory protein-2 as mediator of inflammation in acute liver injury

*Qin CC, Liu YN, Hu Y, Yang Y, Chen Z*

**ORIGINAL ARTICLE****Basic Study**

- 3053** CXCR7/CXCL12 axis is involved in lymph node and liver metastasis of gastric carcinoma

*Xin Q, Zhang N, Yu HB, Zhang Q, Cui YF, Zhang CS, Ma Z, Yang Y, Liu W*

- 3066** Low-grade slightly elevated and polypoid colorectal adenomas display differential  $\beta$ -catenin-TCF/LEF activity, c-Myc, and cyclin D1 expression

*Yang TW, Gao YH, Ma SY, Wu Q, Li ZF*

**Retrospective Cohort Study**

- 3077** Pancreaticoduodenectomy in patients  $\geq 75$  years of age: Are there any differences with other age ranges in oncological and surgical outcomes? Results from a tertiary referral center

*Paiella S, De Pastena M, Pollini T, Zancan G, Ciprani D, De Marchi G, Landoni L, Esposito A, Casetti L, Malleo G, Marchegiani G, Tuveri M, Marrano E, Maggino L, Secchettin E, Bonamini D, Bassi C, Salvia R*

**Retrospective Study**

- 3084** New flexible endoscopic controlled stapler technique for the treatment of Zenker's diverticulum: A case series

*Wilmsen J, Baumbach R, Stüker D, Weingart V, Nesper F, Gölder SK, Pfundstein C, Nötzel EC, Rösch T, Faiss S*

- 3092** Comparison of imaging-based and pathological dimensions in pancreatic neuroendocrine tumors  
*Paiella S, Impellizzeri H, Zanolin E, Marchegiani G, Miotto M, Malpaga A, De Robertis R, D'Onofrio M, Rusev B, Capelli P, Cingarlini S, Butturini G, Davì MV, Amodio A, Bassi C, Scarpa A, Salvia R, Landoni L*

- 3099** Octogenarian liver grafts: Is their use for transplant currently justified?  
*Jiménez-Romero C, Cambra F, Caso O, Manrique A, Calvo J, Marcacuzco A, Rioja P, Lora D, Justo I*

- 3111** Rate of local tumor progression following radiofrequency ablation of pathologically early hepatocellular carcinoma  
*Hao Y, Numata K, Ishii T, Fukuda H, Maeda S, Nakano M, Tanaka K*

- 3122** Prognostic value of the neutrophil-to-lymphocyte ratio for hepatocellular carcinoma patients with portal/hepatic vein tumor thrombosis  
*Li SH, Wang QX, Yang ZY, Jiang W, Li C, Sun P, Wei W, Shi M, Guo RP*

#### Clinical Trials Study

- 3133** Diagnostic value of gadobenate dimeglumine-enhanced hepatocyte-phase magnetic resonance imaging in evaluating hepatic fibrosis and hepatitis  
*Li XM, Chen Z, Xiao EH, Shang QL, Ma C*

#### Observational Study

- 3142** Consequences of metabolic syndrome on postoperative outcomes after pancreaticoduodenectomy  
*Zarzavadjian Le Bian A, Fuks D, Chopinet S, Gaujoux S, Cesaretti M, Costi R, Belgaumkar AP, Smadja C, Gayet B*
- 3150** Effect of a counseling-supported treatment with the Mediterranean diet and physical activity on the severity of the non-alcoholic fatty liver disease  
*Gelli C, Tarocchi M, Abenavoli L, Di Renzo L, Galli A, De Lorenzo A*

#### Prospective Study

- 3163** Cost-effectiveness of enhanced liver fibrosis test to assess liver fibrosis in chronic hepatitis C virus and alcoholic liver disease patients  
*Soto M, Sampietro-Colom L, Lasalvia L, Mira A, Jiménez W, Navasa M*
- 3174** Impact of gastroesophageal reflux control through tailored proton pump inhibition therapy or fundoplication in patients with Barrett's esophagus  
*Baldaque-Silva F, Vieth M, Debel M, Håkanson B, Thorell A, Lunet N, Song H, Mascarenhas-Saraiva M, Pereira G, Lundell L, Marschall HU*
- 3184** Comparison of endoscopic ultrasound, computed tomography and magnetic resonance imaging in assessment of detailed structures of pancreatic cystic neoplasms  
*Du C, Chai NL, Linghu EQ, Li HK, Sun LH, Jiang L, Wang XD, Tang P, Yang J*

**LETTER TO THE EDITOR**

- 3193** Efficacy and safety of stellate ganglion block in chronic ulcerative colitis

*Lipov E, Candido K*

## Contents

*World Journal of Gastroenterology*  
Volume 23 Number 17 May 7, 2017

### ABOUT COVER

Editorial board member of *World Journal of Gastroenterology*, Maurizio Degiuli, FRCS (Gen Surg), MD, PhD, Associate Professor, Head, Department of Oncology, University of Turin, School of Medicine, San Luigi University Hospital, Orbassano- Turin 10043, Italy

### AIMS AND SCOPE

*World Journal of Gastroenterology* (*World J Gastroenterol*, *WJG*, print ISSN 1007-9327, online ISSN 2219-2840, DOI: 10.3748) is a peer-reviewed open access journal. *WJG* was established on October 1, 1995. It is published weekly on the 7<sup>th</sup>, 14<sup>th</sup>, 21<sup>st</sup>, and 28<sup>th</sup> each month. The *WJG* Editorial Board consists of 1375 experts in gastroenterology and hepatology from 68 countries.

The primary task of *WJG* is to rapidly publish high-quality original articles, reviews, and commentaries in the fields of gastroenterology, hepatology, gastrointestinal endoscopy, gastrointestinal surgery, hepatobiliary surgery, gastrointestinal oncology, gastrointestinal radiation oncology, gastrointestinal imaging, gastrointestinal interventional therapy, gastrointestinal infectious diseases, gastrointestinal pharmacology, gastrointestinal pathophysiology, gastrointestinal pathology, evidence-based medicine in gastroenterology, pancreatology, gastrointestinal laboratory medicine, gastrointestinal molecular biology, gastrointestinal immunology, gastrointestinal microbiology, gastrointestinal genetics, gastrointestinal translational medicine, gastrointestinal diagnostics, and gastrointestinal therapeutics. *WJG* is dedicated to become an influential and prestigious journal in gastroenterology and hepatology, to promote the development of above disciplines, and to improve the diagnostic and therapeutic skill and expertise of clinicians.

### INDEXING/ABSTRACTING

*World Journal of Gastroenterology* (*WJG*) is now indexed in Current Contents<sup>®</sup>/Clinical Medicine, Science Citation Index Expanded (also known as SciSearch<sup>®</sup>), Journal Citation Reports<sup>®</sup>, Index Medicus, MEDLINE, PubMed, PubMed Central, Digital Object Identifier, and Directory of Open Access Journals. The 2015 edition of Journal Citation Reports<sup>®</sup> released by Thomson Reuters (ISI) cites the 2015 impact factor for *WJG* as 2.787 (5-year impact factor: 2.848), ranking *WJG* as 38 among 78 journals in gastroenterology and hepatology (quartile in category Q2).

### FLYLEAF

#### I-IX Editorial Board

### EDITORS FOR THIS ISSUE

Responsible Assistant Editor: *Xiang Li*  
Responsible Electronic Editor: *Fen-Fen Zhang*  
Proofing Editor-in-Chief: *Lian-Sheng Ma*

Responsible Science Editor: *Ze-Mao Gong*  
Proofing Editorial Office Director: *Jin-Lei Wang*

NAME OF JOURNAL  
*World Journal of Gastroenterology*

ISSN  
ISSN 1007-9327 (print)  
ISSN 2219-2840 (online)

LAUNCH DATE  
October 1, 1995

FREQUENCY  
Weekly

EDITORS-IN-CHIEF  
**Damian Garcia-Olmo, MD, PhD, Doctor, Professor, Surgeon**, Department of Surgery, Universidad Autonoma de Madrid; Department of General Surgery, Fundacion Jimenez Diaz University Hospital, Madrid 28040, Spain

**Stephen C Strom, PhD, Professor**, Department of Laboratory Medicine, Division of Pathology, Karolinska Institutet, Stockholm 141-86, Sweden

**Andrzej S Tarnawski, MD, PhD, DSc (Med), Professor of Medicine, Chief Gastroenterology**, VA Long Beach Health Care System, University of California, Irvine, CA, 5901 E. Seventh Str., Long Beach,

CA 90822, United States

EDITORIAL BOARD MEMBERS  
All editorial board members resources online at <http://www.wjgnet.com/1007-9327/editorialboard.htm>

EDITORIAL OFFICE  
Jin-Lei Wang, Director  
Yuan Qi, Vice Director  
Ze-Mao Gong, Vice Director  
*World Journal of Gastroenterology*  
Baishideng Publishing Group Inc  
7901 Stoneridge Drive, Suite 501,  
Pleasanton, CA 94588, USA  
Telephone: +1-925-2238242  
Fax: +1-925-2238243  
E-mail: [editorialoffice@wjgnet.com](mailto:editorialoffice@wjgnet.com)  
Help Desk: <http://www.f6publishing.com/helpdesk>  
<http://www.wjgnet.com>

PUBLISHER  
Baishideng Publishing Group Inc  
7901 Stoneridge Drive, Suite 501,  
Pleasanton, CA 94588, USA  
Telephone: +1-925-2238242  
Fax: +1-925-2238243  
E-mail: [bpgoffice@wjgnet.com](mailto:bpgoffice@wjgnet.com)  
Help Desk: <http://www.f6publishing.com/helpdesk>

<http://www.wjgnet.com>

PUBLICATION DATE  
May 7, 2017

COPYRIGHT  
© 2017 Baishideng Publishing Group Inc. Articles published by this Open-Access journal are distributed under the terms of the Creative Commons Attribution Non-commercial License, which permits use, distribution, and reproduction in any medium, provided the original work is properly cited, the use is non commercial and is otherwise in compliance with the license.

SPECIAL STATEMENT  
All articles published in journals owned by the Baishideng Publishing Group (BPG) represent the views and opinions of their authors, and not the views, opinions or policies of the BPG, except where otherwise explicitly indicated.

INSTRUCTIONS TO AUTHORS  
Full instructions are available online at <http://www.wjgnet.com/bpg/gerinfo/204>

ONLINE SUBMISSION  
<http://www.f6publishing.com>



## Esophagitis and its causes: Who is “guilty” when acid is found “not guilty”?

Laurino Grossi, Antonio Francesco Ciccaglione, Leonardo Marzio

Laurino Grossi, Antonio Francesco Ciccaglione, Leonardo Marzio, G. d’Annunzio University of Chieti-Pescara, School of Gastroenterology, Digestive Sciences c/o Ospedale Spirito Santo, 65124 Pescara, Italy

**Author contributions:** Grossi L was responsible for the conception of the manuscript; Grossi L and Ciccaglione AF performed the literature search; Marzio L supervised the work and gave final approval of the manuscript.

**Conflict-of-interest statement:** No potential conflicts of interest relevant to this article were reported.

**Open-Access:** This article is an open-access article which was selected by an in-house editor and fully peer-reviewed by external reviewers. It is distributed in accordance with the Creative Commons Attribution Non Commercial (CC BY-NC 4.0) license, which permits others to distribute, remix, adapt, build upon this work non-commercially, and license their derivative works on different terms, provided the original work is properly cited and the use is non-commercial. See: <http://creativecommons.org/licenses/by-nc/4.0/>

**Manuscript source:** Invited manuscript

**Correspondence to:** Laurino Grossi, MD, Associate Professor, Gastroenterology, G. d’Annunzio University Chieti-Pescara, School of Gastroenterology c/o Digestive Sciences - Ospedale Spirito Santo, Via Fonte Romana, 8 65124 Pescara, Italy. [l.grossi@unich.it](mailto:l.grossi@unich.it)  
Telephone: +39-085-4252460

**Received:** January 25, 2017

**Peer-review started:** February 1, 2017

**First decision:** March 3, 2017

**Revised:** March 14, 2017

**Accepted:** April 12, 2017

**Article in press:** April 12, 2017

**Published online:** May 7, 2017

### Abstract

Esophagitis is mainly a consequence of gastro-esophageal reflux disease, one of the most common

diseases affecting the upper digestive tract. However the esophageal mucosa can also be targeted by some infectious, systemic or chemical conditions. Eosinophilic esophagitis (EoE) is an immune-mediated inflammatory disease, characterized by eosinophilic infiltration in the mucosa. Esophageal localization of Crohn’s disease is not very common, but it should always be considered in patients with inflammatory bowel disease complaining of upper digestive tract symptoms. There are also forms of infectious esophagitis (*e.g.*, Herpes simplex virus or *Candida albicans*) occurring in patients with a compromised immune system, either because of specific diseases or immunosuppressive therapies. Another kind of damage to esophageal mucosa is due to drug use (including oncologic chemotherapeutic regimens and radiotherapy) or caustic ingestion, usually of alkaline liquids, with colliquative necrosis and destruction of mucosa within a few seconds. Dysphagia is a predominant symptom in EoE, while infectious, drug-induced and caustic damages usually cause chest pain and odynophagia. Endoscopy can be useful for diagnosing esophagitis, although no specific pattern can be identified. In conclusion when a patient refers upper gastrointestinal tract symptoms and the diagnosis of gastro-esophageal reflux disease is not convincing we should always carefully investigate the patient’s clinical history to consider possibilities other than the gastric refluxate.

**Key words:** Esophagitis; Gastroesophageal reflux disease; Eosinophilic esophagitis; Crohn’s disease; Herpes simplex virus; Manometry; Candida; Caustic; Dysphagia; Chest pain

© The Author(s) 2017. Published by Baishideng Publishing Group Inc. All rights reserved.

**Core tip:** This manuscript analyzes the esophageal diseases whose etiology is not directly related to abnormal gastro-esophageal reflux episodes. These conditions occur less frequently than gastroesophageal reflux disease, but their diagnosis should always be

considered when managing patients with unexplained upper gastrointestinal symptoms. Some of these diseases are immune-mediated inflammatory processes, either limited to the esophageal wall such as eosinophilic esophagitis or part of systemic diseases such as Crohn's disease. Other possible etiologies include viral or fungal infections in immunocompromised patients, and corrosive agents causing direct damage to the esophageal mucosa as well as therapeutic regimen used for neoplasms. All these possibilities should be taken into consideration when Reflux esophagitis cannot be diagnosed.

Grossi L, Ciccaglione AF, Marzio L. Esophagitis and its causes: Who is "guilty" when acid is found "not guilty"? *World J Gastroenterol* 2017; 23(17): 3011-3016 Available from: URL: <http://www.wjgnet.com/1007-9327/full/v23/i17/3011.htm> DOI: <http://dx.doi.org/10.3748/wjg.v23.i17.3011>

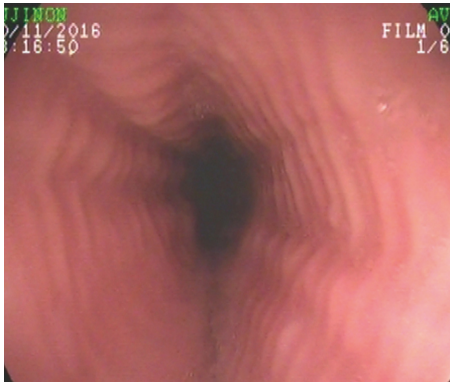
## INTRODUCTION

The term esophagitis refers to an inflammatory condition of the esophageal mucosa, usually associated with characteristic symptoms, such as heartburn, chest pain and dysphagia. Gastroesophageal reflux disease (GERD) is the main cause of esophagitis. It affects about 20% of the population in Western countries<sup>[1]</sup> and represents one of the most common conditions which gastroenterologists and general practitioners have to deal with. In fact the esophageal wall has low defense against gastric acid injury that can induce either erosive or non-erosive esophagitis<sup>[2]</sup>. Over the years esophagitis was considered almost synonymous with acid reflux, which lead to consequent therapeutic approaches mainly aimed at reducing gastric secretion. Today other mechanisms are known to similarly affect the esophageal wall and its motor function. These conditions are less frequent than GERD but they should also be taken into consideration when managing patients with unexplained upper gastrointestinal (GI) symptoms. Some of these are immune-mediated inflammatory processes, either limited to the esophageal wall [like eosinophilic esophagitis (EoE)] or part of systemic alterations [like Crohn's disease (CD)]. Other possible causes of esophagitis include infectious agents and corrosive substances causing damage to the esophageal mucosa or injuries related to chemotherapy and/or radiotherapy.

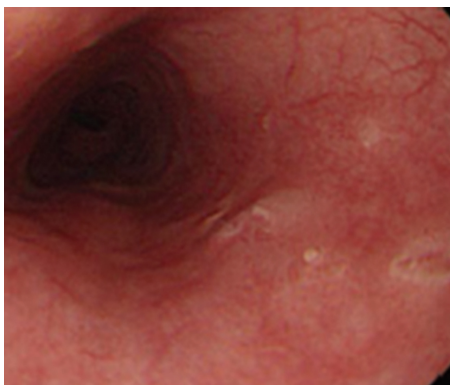
## EoE

EoE is an immune-mediate inflammatory disease characterized by an eosinophilic infiltration of the esophageal mucosal layer [ $\geq 15$  eosinophils in at least one high-power field (HPF) found in one or more of the esophageal mucosa biopsies<sup>[3]</sup>]. This condition was first described in the 70s<sup>[4]</sup> but became a distinct

clinical entity in the early 1990s<sup>[5]</sup>. Over the last ten years, there has been a significant increase in the number of cases of EoE, with an actual estimated incidence of 7/100000 per year and a prevalence of 43/100000 per year<sup>[6]</sup>. The most common symptom referred by patients with EoE is dysphagia, usually with solid foods, that can also cause esophageal food bolus impaction (OFBI). In fact, it has been recently demonstrated that about 30% of OFBI referred to an Emergency Department is likely to be related to EoE, rather than to other organic diseases such as neoplasms or Schatzki rings<sup>[7]</sup>. Symptoms usually start in childhood, particularly when there is a family history of allergy. Sometimes the early symptoms can mimic GERD with dysphagia (in fact food impaction usually occur in later stages); in other cases the food impaction can be the first clinical manifestation that leads to the diagnosis. Upper GI endoscopy performed in the first years of the disease can show normal findings, especially in pediatric patients, but can reveal some characteristic patterns in adults. In fact, the esophageal wall presents multiple rings resembling the trachea (so called "trachealization of the esophagus", Figure 1) or longitudinal furrows through the entire lumen, which often represent the areas with greater eosinophilic infiltration<sup>[8,9]</sup>. The progressive loss of tissue elasticity due to the inflammatory cell infiltration can elicit motor abnormalities, which may become more evident when the inflammatory process reaches the muscular or neuronal site. Although no specific motor alterations allow the physician to make the diagnosis of EoE, recent evaluations using high-resolution manometry<sup>[10]</sup> identify frequent alterations of the intraesophageal pressurization in EoE patients. The most characteristic feature is an early pan-esophageal pressurization preceding the peristaltic wave, as a possible consequence of the decreased esophageal wall compliance. Other dysmotility aspects, such as weak or failed peristalsis, occur with similar incidence in EoE and GERD patients, explaining the potential clinical overlap between the two conditions, at least in the early stages. Such intriguing features of EoE reflect a variety of therapeutic strategies, which are not fully standardized yet. Until recently, EoE and GERD were considered two distinct entities based on the lack of response to proton pump inhibitors (PPIs)<sup>[11]</sup> and, with less relevance, on a normal 24-h pH profile<sup>[12]</sup>. In the last years a surprising third category of EoE with clinical and histological improvement after PPIs has been identified<sup>[13]</sup>. The mechanism through which PPIs can be effective in EoE is not clear, but may be related to their potential antioxidant activity and capacity to reduce inflammatory cytokines production<sup>[14]</sup>. In summary, three distinct entities should be considered: GERD, PPI-responsive EoE and EoE<sup>[15]</sup>. The first two of these respond to inhibition of gastric secretion either directly or in combination with dietetic restrictions, whereas the latter requires to reduce the immune response by topical steroids and change in



**Figure 1 Eosinophilic esophagitis.** Endoscopic appearance of eosinophilic esophagitis; note the characteristic multiple rings throughout the esophagus resembling the tracheal aspect and described as “trachealization of the esophagus”. This finding is not common in the early stage of the disease, when tissue elasticity is still preserved by the inflammatory damage.



**Figure 2 Esophageal Crohn's disease.** Endoscopic finding in a patient with esophageal localization of Crohn's disease. Note the aphthous erosions and the small ulceration similar to those usually present in the lower gastrointestinal tract. The localization at the middle tract of the esophagus, far from the esophago-gastric junction suggests to rule out the possibility of gastroesophageal reflux disease.

the alimentary habits. The high incidence of GERD and its possible overlap with EoE<sup>[16]</sup> still represent a confounding factor in differentiating these two entities. Nevertheless, it is important to consider EoE in the diagnostic protocol of patients, especially young adults, who are scarcely responsive to the common anti-reflux strategies. In particular, once an upper GI endoscopy is performed in such patients, biopsies are mandatory.

## ESOPHAGEAL INVOLVEMENT IN CD

CD is an inflammatory bowel disease that can affect the entire GI tract. The most common sites of CD are the terminal ileum and colon but inflammation may be less frequently found also in the more proximal areas. Esophageal involvement in concomitant ileocolonic disease occurs in 0.2%-3% of the adult population, whereas isolated esophageal CD has been rarely reported<sup>[17]</sup>. Similarly to the classical ileocolonic CD, endoscopic appearance of the esophagus is

characterized by aphthous erosions and ulcerations usually localized far from esophago-gastric junction (Figure 2), which helps to differentiate them from GERD, nodularity, strictures<sup>[18]</sup> and the possibility of fistula occurring between esophagus and mediastinum, pleural cavity or bronchus<sup>[19]</sup>. Symptoms can range from a mild dysphagia to a severe obstructive condition depending on the grade of parietal involvement. Although histology identifies the typical features of CD (e.g., non-caseating granulomas) in about half of gastric and duodenal involvement, esophageal findings consistent with CD are reported in only 10% of cases<sup>[20]</sup>.

Therefore, the diagnosis of esophageal CD may not be difficult when other typical localizations are present, but it could take a long time in patients with isolated esophageal involvement.

## DRUG-INDUCED ESOPHAGITIS

The damage of esophageal mucosa induced by commonly-used drugs is certainly underestimated. In fact many compounds are potentially aggressive to the esophageal wall, either by a direct toxic activity on the mucosa or by the production of caustic acidic or alkaline solutions; however the low awareness of these effects usually allows continuous assumption of the medications, with consequent more severe complications<sup>[21]</sup>. Drug-induced esophagitis is characterized by dysphagia, chest pain or odynophagia. These symptoms are generally abrupt onset, intermittent and self-limiting which can make an early diagnosis difficult. There is a lack of literature informations in this area, with data coming only from case reports or short reviews. Endoscopic findings are usually limited to the middle third of the esophagus<sup>[22]</sup>, which may be compressed by the aortic arch or enlarged left atrium. The main lesions are ulcers or erosions (Figure 3); However in some cases impacted pills as well as strictures could be found. Antibiotics (doxycycline, amoxicillin, ciprofloxacin, metronidazole, rifaximin) are the major causative agents of esophagitis eliciting damage greater than NSAIDs. Other agents responsible for drug-induced esophagitis are anti-hypertensive, acetaminophen, biphosphonates, and warfarin<sup>[23]</sup>. The therapeutic approach to this type of disease is to use PPIs and antacids, with discontinuation of the causative drug.

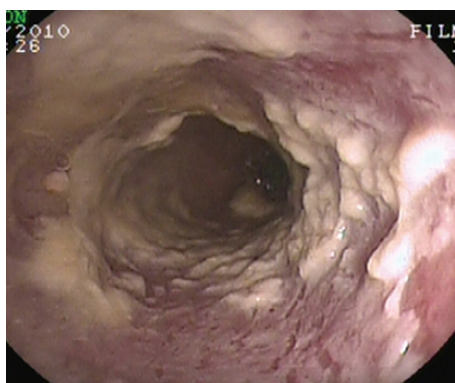
## INFECTIOUS ESOPHAGITIS

Infectious diseases with esophageal involvement represent a quite uncommon condition in immunocompetent subjects. Fungi, virus and bacteria can cause esophageal damage in patients with immunodeficiency (*i.e.*, HIV infection, history of malignancies, prolonged use of immunosuppressive drugs or steroids). Herpes simplex virus (HSV) is the main viral agent responsible for esophageal damage with endoscopic evidence of





**Figure 3 Drug-induced esophageal damage.** Endoscopic view of a patient with a history of NSAIDS use. In this case two ulcers are visible, located in the middle third of the esophagus. Also in this case, as well as for Crohn's disease, the proximal localization makes the possibility of gastroesophageal reflux disease unlikely.



**Figure 4 Candida esophagitis.** Endoscopic appearance in a patient with severe dysphagia under chronic steroid treatment for rheumatoid arthritis. Note the typical multiple yellow plaques interesting the entire tract of the esophageal wall and strictly adherent to the mucosa.

multiple shallow ulcers usually located in the lower third of the lumen. HSV esophagitis is more frequent in males than females. Symptoms are mainly odynophagia, dysphagia, and retrosternal pain, sometimes accompanied by fever<sup>[24]</sup>. Another infectious agent able to cause esophagitis is *Candida*. Endoscopically the esophagus shows multiple yellow plaques covering the entire tract of the esophageal wall (Figure 4) and usually localized inside the oral mucosa<sup>[25]</sup>. Patients with mycosis show dysphagia, odynophagia and, less frequently, chest pain. Bacterial esophagitis is much less common than viral and fungal infections; however Gram-positive cocci such as *Staphylococcus aureus* and *Staphylococcus epidermidis*, usually present in the oral cavity or in the upper respiratory tract, may be identified in the esophagus of immunocompromised patients<sup>[26]</sup> or in subjects receiving long-term H<sub>2</sub> blockers or PPIs<sup>[27]</sup>. There is in fact evidence that these medications alter the microbial population facilitating infections by opportunistic agents.

When the cause of esophagitis has been identified, pathogen-specific therapy can be used. Most

esophageal infections can be treated with a specific antimicrobial (e.g., fluconazole for *Candida*, acyclovir for Herpetic infections) associated with a therapy for the underlying immune condition.

## CAUSTIC INJURY ESOPHAGITIS

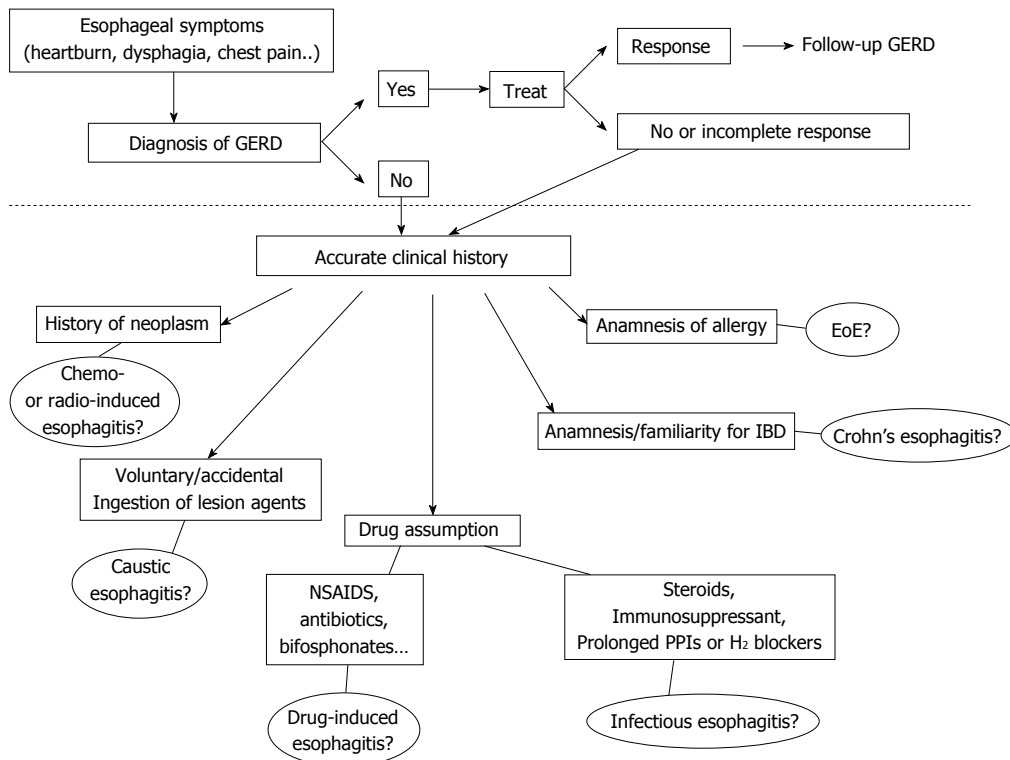
Corrosive esophagitis occurs from voluntary or accidental ingestion of alkaline liquids and, less frequently, acidic substances. The effect of these two categories of agents on esophageal mucosa is different<sup>[28]</sup>. Alkaline agents cause colliquative necrosis, which leads to the destruction of mucosa within a few seconds and to thrombosis of small vessels within 48 h. Acidic substances induce coagulation necrosis with eschar formation, which may limit tissue penetration. The vast majority of alkaline agents responsible for corrosive damage are detergents; however there are other potentially aggressive substances requiring careful management<sup>[29]</sup>. One of these substances is picosulfate, commonly used as a laxative for bowel cleansing before colonoscopy. If not properly dissolved in water, picosulfate powder can cause severe injury to the esophageal wall<sup>[30]</sup>. Whatever the causative agents, mucosal damage can be assessed with endoscopy according to Zargar's classification on a 0-3 scale, with the higher score corresponding to a worse outcome<sup>[31]</sup>.

## ESOPHAGITIS DUE TO CHEMO-THERAPY AND RADIO-THERAPY

Many chemotherapeutic regimens (dactinomycin, bleomycin, daunorubicin, cytarabine, 5-fluorouracil, methotrexate, vincristine) may determine the occurrence of esophageal damage, usually as a consequence of a severe oropharyngeal mucositis<sup>[32]</sup>. Thoracic irradiation may also result in significant injury to the esophageal mucosa, either by direct toxicity or by the radio-sensitizing action of previously used chemotherapies, such as doxorubicin or bleomycin. Such a damage is characterized by progressive fibrosis and degeneration of vessels, smooth muscle and neuronal component in the myenteric plexus. Endoscopically mucosal friability, edema and small erosions or large ulcers are commonly found, with stricture formation as a further complication. Dysphagia, odynophagia and chest pain may persist for weeks to months in such patients who usually require the topical application of viscous solutions containing lidocaine or steroids together with PPIs to alleviate their complains<sup>[33]</sup>.

## FINAL CONSIDERATIONS AND CONCLUSIONS

Patients with esophagitis are frequently affected by GERD, but acidic reflux is not the only aggressive phenomenon within the esophagus. Therefore all



**Figure 5** Diagnostic flow-chart proposed in patients with symptoms suggestive of esophagitis (heartburn, dysphagia, chest pain and others). The area above the dotted line includes all the possible manifestations of GERD that remains the most common etiology of symptoms. The less frequent causes are reported below the dotted line. All the possibilities deserve an accurate collection of clinical history to orientate the differential diagnosis. EoE: Eosinophilic esophagitis; NSAIDs: Non-steroidal anti-inflammatory drugs; IBD: Inflammatory bowel disease; GERD: Gastroesophageal reflux disease.

other causes of esophageal injury should be ruled out especially in subjects who do not respond to antisecretory therapy. In Figure 5 we propose a flow-chart with the possible steps to follow once ruled out the presence of Gastro-Esophageal Reflux Disease. Patients with a history of allergy, particularly if young, must be investigated for EoE. A previous diagnosis of IBD or underlying reumatological diseases could indicate the possibility of an esophageal involvement by CD. Patients whose immune system is impaired, because of the use of either immunosuppressant drugs or prolonged gastric antisecretory agents, may develop infectious forms of esophagitis. The drug history of each patient should always be deeply investigated, since many compounds are potentially responsible of pill-induced esophagitis. A careful anamnesis is also required to exclude damage by ingestion of caustics, either accidental or voluntary, as well as recent oncologic treatments, such as chemotherapy or radiation. The timing of symptoms onset, the site of injury and its endoscopic or radiological characteristics could further help to orientate the diagnosis.

Although an overlap of GERD with all the above mentioned diseases may exist, it is important to carefully evaluate all diagnostic options before making a final diagnosis. Acid is usually recognized as the ideal culprit for esophageal diseases, but sometimes it can only be an innocent by-stander and the source of disease should be sought elsewhere.

## ACKNOWLEDGMENTS

The authors thank Dr. Sonia Toracchio for reviewing the English style of the manuscript.

## REFERENCES

- 1 Mikami DJ, Murayama KM. Physiology and pathogenesis of gastroesophageal reflux disease. *Surg Clin North Am* 2015; **95**: 515-525 [PMID: 25965127 DOI: 10.1016/j.suc.2015.02.006]
- 2 Orlando RC, Paterson WG, Harnett KM, Ma J, Behar J, Biancani P, Guarino MP, Altomare A, Cicala M, Cao W. Esophageal disease: updated information on inflammation. *Ann N Y Acad Sci* 2011; **1232**: 369-375 [PMID: 21950828 DOI: 10.1111/j.1749-6632.2011.06064.x]
- 3 de Bortoli N, Penagini R, Savarino E, Marchi S. Eosinophilic esophagitis: Update in diagnosis and management. Position paper by the Italian Society of Gastroenterology and Gastrointestinal Endoscopy (SIGE). *Dig Liver Dis* 2017; **49**: 254-260 [PMID: 27979389 DOI: 10.1016/j.dld.2016.11.012]
- 4 Dobbins JW, Sheahan DG, Behar J. Eosinophilic gastroenteritis with esophageal involvement. *Gastroenterology* 1977; **72**: 1312-1316 [PMID: 870380]
- 5 Attwood SE, Smyrk TC, Demeester TR, Jones JB. Esophageal eosinophilia with dysphagia. A distinct clinicopathologic syndrome. *Dig Dis Sci* 1993; **38**: 109-116 [PMID: 8420741]
- 6 Spergel JM, Book WM, Mays E, Song L, Shah SS, Talley NJ, Bonis PA. Variation in prevalence, diagnostic criteria, and initial management options for eosinophilic gastrointestinal diseases in the United States. *J Pediatr Gastroenterol Nutr* 2011; **52**: 300-306 [PMID: 21057327 DOI: 10.1097/MPG.0b013e3181eb5a9f]
- 7 Sengupta N, Tapper EB, Corban C, Sommers T, Leffler DA, Lembo AJ. The clinical predictors of aetiology and complications

- among 173 patients presenting to the Emergency Department with oesophageal food bolus impaction from 2004-2014. *Aliment Pharmacol Ther* 2015; **42**: 91-98 [PMID: 25963885 DOI: 10.1111/apt.13237]
- 8 **Okimoto E**, Ishimura N, Okada M, Izumi D, Mikami H, Aimi M, Tanimura T, Mishiro T, Oshima N, Ishikawa N, Ishihara S, Adachi K, Maruyama R, Kinoshita Y. Specific locations of linear furrows in patients with esophageal eosinophilia. *Dig Endosc* 2017; **29**: 49-56 [PMID: 27492993 DOI: 10.1111/den.12706]
  - 9 **Hirano I**, Moy N, Heckman MG, Thomas CS, Gonsalves N, Achem SR. Endoscopic assessment of the oesophageal features of eosinophilic oesophagitis: validation of a novel classification and grading system. *Gut* 2013; **62**: 489-495 [PMID: 22619364 DOI: 10.1136/gutjnl-2011-301817]
  - 10 **Roman S**, Hirano I, Kwiatek MA, Gonsalves N, Chen J, Kahrilas PJ, Pandolfino JE. Manometric features of eosinophilic esophagitis in esophageal pressure topography. *Neurogastroenterol Motil* 2011; **23**: 208-214, e111 [PMID: 21091849 DOI: 10.1111/j.1365-2982.2010.01633.x]
  - 11 **Furuta GT**, Liacouras CA, Collins MH, Gupta SK, Justinich C, Putnam PE, Bonis P, Hassall E, Straumann A, Rothenberg ME. Eosinophilic esophagitis in children and adults: a systematic review and consensus recommendations for diagnosis and treatment. *Gastroenterology* 2007; **133**: 1342-1363 [PMID: 17919504]
  - 12 **Molina-Infante J**, Ferrando-Lamana L, Ripoll C, Hernandez-Alonso M, Mateos JM, Fernandez-Bermejo M, Dueñas C, Fernandez-Gonzalez N, Quintana EM, Gonzalez-Núñez MA. Esophageal eosinophilic infiltration responds to proton pump inhibition in most adults. *Clin Gastroenterol Hepatol* 2011; **9**: 110-117 [PMID: 20920599 DOI: 10.1016/j.cgh.2010.09.019]
  - 13 **Liacouras CA**, Furuta GT, Hirano I, Atkins D, Attwood SE, Bonis PA, Burks AW, Chehade M, Collins MH, Dellon ES, Dohil R, Falk GW, Gonsalves N, Gupta SK, Katzka DA, Lucendo AJ, Markowitz JE, Noel RJ, Odze RD, Putnam PE, Richter JE, Romero Y, Ruchelli E, Sampson HA, Schoepfer A, Shaheen NJ, Sicherer SH, Spechler S, Spergel JM, Straumann A, Wershil BK, Rothenberg ME, Aceves SS. Eosinophilic esophagitis: updated consensus recommendations for children and adults. *J Allergy Clin Immunol* 2011; **128**: 3-20.e6; quiz 21-22 [PMID: 21477849 DOI: 10.1016/j.jaci.2011.02.040]
  - 14 **Kedika RR**, Souza RF, Spechler SJ. Potential anti-inflammatory effects of proton pump inhibitors: a review and discussion of the clinical implications. *Dig Dis Sci* 2009; **54**: 2312-2317 [PMID: 19714466 DOI: 10.1007/s10620-009-0951-9]
  - 15 **Molina-Infante J**, Bredenoord AJ, Cheng E, Dellon ES, Furuta GT, Gupta SK, Hirano I, Katzka DA, Moawad FJ, Rothenberg ME, Schoepfer A, Spechler SJ, Wen T, Straumann A, Lucendo AJ. Proton pump inhibitor-responsive oesophageal eosinophilia: an entity challenging current diagnostic criteria for eosinophilic oesophagitis. *Gut* 2016; **65**: 524-531 [PMID: 26685124 DOI: 10.1136/gutjnl-2015-310991]
  - 16 **Savarino EV**, Tolone S, Bartolo O. et al. The GerdQ questionnaire and high resolution manometry support the hypothesis that proton pump inhibitor-responsive oesophageal eosinophilia is a GERD-related phenomenon. *Aliment Pharmacol Ther* 2016; **5**: 522-530 [DOI: 10.1111/apt.13718]
  - 17 **Naranjo-Rodríguez A**, Solórzano-Peck G, López-Rubio F, Calañas-Continente A, Gálvez-Calderón C, González-Galilea A, Hervás-Molina A. Isolated oesophageal involvement of Crohn's disease. *Eur J Gastroenterol Hepatol* 2003; **15**: 1123-1126 [PMID: 14501622]
  - 18 **Feagans J**, Victor D, Joshi V. Crohn disease of the esophagus: a review of the literature. *South Med J* 2008; **101**: 927-930 [PMID: 18708983 DOI: 10.1097/SMJ.0b013e31818047be]
  - 19 **Clarke BW**, Cassara JE, Morgan DR. Crohn's disease of the esophagus with esophagobronchial fistula formation: a case report and review of the literature. *Gastrointest Endosc* 2010; **71**: 207-209 [PMID: 19846083 DOI: 10.1016/j.gie.2009.06.012]
  - 20 **Sakuraba A**, Iwao Y, Matsuoka K, Naganuma M, Ogata H, Kanai T, Hibi T. Endoscopic and pathologic changes of the upper gastrointestinal tract in Crohn's disease. *Biomed Res Int* 2014; **2014**: 610767 [PMID: 24672792 DOI: 10.1155/2014/610767]
  - 21 **Cummin AR**, Hangartner JR. Oesophago-atrial fistula: a side effect of tetracycline? *J R Soc Med* 1990; **83**: 745-746 [PMID: 2250278]
  - 22 **Jaspersen D**. Drug-induced oesophageal disorders: pathogenesis, incidence, prevention and management. *Drug Saf* 2000; **22**: 237-249 [PMID: 10738847]
  - 23 **Kim SH**, Jeong JB, Kim JW, Koh SJ, Kim BG, Lee KL, Chang MS, Im JP, Kang HW, Shin CM. Clinical and endoscopic characteristics of drug-induced esophagitis. *World J Gastroenterol* 2014; **20**: 10994-10999 [PMID: 25152603 DOI: 10.3748/wjg.v20.i31.10994]
  - 24 **Canalejo Castrillero E**, García Durán F, Cabello N, García Martínez J. Herpes esophagitis in healthy adults and adolescents: report of 3 cases and review of the literature. *Medicine (Baltimore)* 2010; **89**: 204-210 [PMID: 20616659 DOI: 10.1097/MD.0b013e3181e949ed]
  - 25 **Wilcox CM**. Overview of infectious esophagitis. *Gastroenterol Hepatol (N Y)* 2013; **9**: 517-519 [PMID: 24719600]
  - 26 **Walsh TJ**, Belitsos NJ, Hamilton SR. Bacterial esophagitis in immunocompromised patients. *Arch Intern Med* 1986; **146**: 1345-1348 [PMID: 3718132]
  - 27 **Amir I**, Konikoff FM, Oppenheim M, Gophna U, Half EE. Gastric microbiota is altered in oesophagitis and Barrett's oesophagus and further modified by proton pump inhibitors. *Environ Microbiol* 2014; **16**: 2905-2914 [PMID: 24112768 DOI: 10.1111/1462-2920.12285]
  - 28 **Ramasamy K**, Gumaste VV. Corrosive ingestion in adults. *J Clin Gastroenterol* 2003; **37**: 119-124 [PMID: 12869880]
  - 29 **Pace F**, Greco S, Pallotta S, Bossi D, Trabucchi E, Bianchi Porro G. An uncommon cause of corrosive esophageal injury. *World J Gastroenterol* 2008; **14**: 636-637 [PMID: 18203301 DOI: 10.3748/wjg.14.636]
  - 30 **Seo JY**, Kang KJ, Kang HS, Kim SE, Park JW, Moon SH, Kim JH, Park CK. Corrosive esophagitis caused by ingestion of picosulfate. *Clin Endosc* 2015; **48**: 66-69 [PMID: 25674529 DOI: 10.5946/ce.2015.48.1.66]
  - 31 **Zargar SA**, Kochhar R, Nagi B, Mehta S, Mehta SK. Ingestion of strong corrosive alkalis: spectrum of injury to upper gastrointestinal tract and natural history. *Am J Gastroenterol* 1992; **87**: 337-341 [PMID: 1539568]
  - 32 **Davila M**, Bresalier RS. Gastrointestinal complications of oncologic therapy. *Nat Clin Pract Gastroenterol Hepatol* 2008; **5**: 682-696 [PMID: 18941434 DOI: 10.1038/ncpgasthep1277]
  - 33 **Berkey FJ**. Managing the adverse effects of radiation therapy. *Am Fam Physician* 2010; **82**: 381-388, 394 [PMID: 20704169]

P- Reviewer: Ierardi E S- Editor: Qi Y L- Editor: A  
E- Editor: Zhang FF





Published by **Baishideng Publishing Group Inc**  
7901 Stoneridge Drive, Suite 501, Pleasanton, CA 94588, USA  
Telephone: +1-925-223-8242  
Fax: +1-925-223-8243  
E-mail: [bpgoffice@wjgnet.com](mailto:bpgoffice@wjgnet.com)  
Help Desk: <http://www.f6publishing.com/helpdesk>  
<http://www.wjgnet.com>



ISSN 1007-9327

