

# World Journal of *Gastroenterology*

*World J Gastroenterol* 2017 July 28; 23(28): 5041-5256



**EDITORIAL**

- 5041** Colorectal cancer in young adults: A difficult challenge

*Campos FG*

- 5045** Precision medicine: In need of guidance and surveillance

*Lin JZ, Long JY, Wang AQ, Zheng Y, Zhao HT*

**REVIEW**

- 5051** Barrett's oesophagus: Current controversies

*Amadi C, Gatenby P*

- 5068** Gastrointestinal neuroendocrine peptides/amines in inflammatory bowel disease

*El-Salhy M, Solomon T, Hausken T, Gilja OH, Hatlebakk JG*

- 5086** Colorectal cancer screening: An updated review of the available options

*Issa IA, Noureddine M*

- 5097** Therapeutic potential of flavonoids in inflammatory bowel disease: A comprehensive review

*Salaritabar A, Darvishi B, Hadjiakhoondi F, Manayi A, Sureda A, Nabavi SF, Fitzpatrick LR, Nabavi SM, Bishayee A*

**ORIGINAL ARTICLE****Basic Study**

- 5115** Myo-inositol reduces  $\beta$ -catenin activation in colitis

*Bradford EM, Thompson CA, Goretsky T, Yang GY, Rodriguez LM, Li L, Barrett TA*

- 5127** Involvement of CRF2 signaling in enterocyte differentiation

*Ducarouge B, Pelissier-Rota M, Powell R, Buisson A, Bonaz B, Jacquier-Sarlin M*

- 5146** Bone marrow-derived monocyte infusion improves hepatic fibrosis by decreasing osteopontin, TGF- $\beta$ 1, IL-13 and oxidative stress

*de Souza VCA, Pereira TA, Teixeira VW, Carvalho H, de Castro MCAB, D'assunção CG, de Barros AF, Carvalho CL, de Lorena VMB, Costa VMA, Teixeira AAC, Figueiredo RCBQ, de Oliveira SA*

- 5158** Single amino acid mutation of SR-BI decreases infectivity of hepatitis C virus derived from cell culture in a cell culture model

*Gao R, Gao W, Xu G, Xu J, Ren H*

- 5167 Fibroblast-derived CXCL12/SDF-1 $\alpha$  promotes CXCL6 secretion and co-operatively enhances metastatic potential through the PI3K/Akt/mTOR pathway in colon cancer

*Ma JC, Sun XW, Su H, Chen Q, Guo TK, Li Y, Chen XC, Guo J, Gong ZQ, Zhao XD, Qi JB*

#### Case Control Study

- 5179 Association between *CYP24A1* polymorphisms and the risk of colonic polyps and colon cancer in a Chinese population

*Chen XQ, Mao JY, Li WB, Li J, Yang H, Qian JM, Li JN*

#### Retrospective Cohort Study

- 5187 Clinical significance of glycemic parameters on venous thromboembolism risk prediction in gastrointestinal cancer

*Guadagni F, Riondino S, Formica V, Del Monte G, Morelli AM, Lucchetti J, Spila A, D'Alessandro R, Della-Morte D, Ferroni P, Roselli M*

- 5196 Sex-dependent difference in the effect of metformin on colorectal cancer-specific mortality of diabetic colorectal cancer patients

*Park JW, Lee JH, Park YH, Park SJ, Cheon JH, Kim WH, Kim TI*

#### Retrospective Study

- 5206 Sex-influenced association of non-alcoholic fatty liver disease with colorectal adenomatous and hyperplastic polyps

*Chen QF, Zhou XD, Sun YJ, Fang DH, Zhao Q, Huang JH, Jin Y, Wu JS*

#### Observational Study

- 5216 Development and validation of a simple and multifaceted instrument, GERD-TEST, for the clinical evaluation of gastroesophageal reflux and dyspeptic symptoms

*Nakada K, Matsuhashi N, Iwakiri K, Oshio A, Joh T, Higuchi K, Haruma K*

- 5229 Modified B-ultrasound method for measurement of antral section only to assess gastric function and guide enteral nutrition in critically ill patients

*Liu Y, Gao YK, Yao L, Li L*

#### Prospective Study

- 5237 Chronic liver failure-consortium acute-on-chronic liver failure and acute decompensation scores predict mortality in Brazilian cirrhotic patients

*Picon RV, Bertol FS, Tovo CV, de Mattos ÁZ*

#### CASE REPORT

- 5246 Refractory hepatic encephalopathy in a patient with hypothyroidism: Another element in ammonia metabolism

*Díaz-Fontenla F, Castillo-Pradillo M, Díaz-Gómez A, Ibáñez-Samaniego L, Gancedo P, Guzmán-de-Villoria JA, Fernández-García P, Bañares-Cañizares R, García-Martínez R*

- 5253** Endoscopic occlusion with silicone spigots for the closure of refractory esophago-bronchiole fistula after esophagectomy

*Uesato M, Kono T, Akutsu Y, Murakami K, Kagaya A, Muto Y, Nakano A, Aikawa M, Tamachi T, Amagai H, Arasawa T, Muto Y, Matsubara H*

## Contents

*World Journal of Gastroenterology*  
Volume 23 Number 28 July 28, 2017

### ABOUT COVER

Editorial board member of *World Journal of Gastroenterology*, Edoardo G Giannini, FACC, MD, PhD, Assistant Professor, Department of Internal Medicine, University of Genoa, 16132 Genova, Italy

### AIMS AND SCOPE

*World Journal of Gastroenterology* (*World J Gastroenterol*, *WJG*, print ISSN 1007-9327, online ISSN 2219-2840, DOI: 10.3748) is a peer-reviewed open access journal. *WJG* was established on October 1, 1995. It is published weekly on the 7<sup>th</sup>, 14<sup>th</sup>, 21<sup>st</sup>, and 28<sup>th</sup> each month. The *WJG* Editorial Board consists of 1375 experts in gastroenterology and hepatology from 68 countries.

The primary task of *WJG* is to rapidly publish high-quality original articles, reviews, and commentaries in the fields of gastroenterology, hepatology, gastrointestinal endoscopy, gastrointestinal surgery, hepatobiliary surgery, gastrointestinal oncology, gastrointestinal radiation oncology, gastrointestinal imaging, gastrointestinal interventional therapy, gastrointestinal infectious diseases, gastrointestinal pharmacology, gastrointestinal pathophysiology, gastrointestinal pathology, evidence-based medicine in gastroenterology, pancreatology, gastrointestinal laboratory medicine, gastrointestinal molecular biology, gastrointestinal immunology, gastrointestinal microbiology, gastrointestinal genetics, gastrointestinal translational medicine, gastrointestinal diagnostics, and gastrointestinal therapeutics. *WJG* is dedicated to become an influential and prestigious journal in gastroenterology and hepatology, to promote the development of above disciplines, and to improve the diagnostic and therapeutic skill and expertise of clinicians.

### INDEXING/ABSTRACTING

*World Journal of Gastroenterology* (*WJG*) is now indexed in Current Contents<sup>®</sup>/Clinical Medicine, Science Citation Index Expanded (also known as SciSearch<sup>®</sup>), Journal Citation Reports<sup>®</sup>, Index Medicus, MEDLINE, PubMed, PubMed Central and Directory of Open Access Journals. The 2017 edition of Journal Citation Reports<sup>®</sup> cites the 2016 impact factor for *WJG* as 3.365 (5-year impact factor: 3.176), ranking *WJG* as 29<sup>th</sup> among 79 journals in gastroenterology and hepatology (quartile in category Q2).

### FLYLEAF

#### I-IX Editorial Board

### EDITORS FOR THIS ISSUE

Responsible Assistant Editor: *Xiang Li*  
Responsible Electronic Editor: *Fen-Fen Zhang*  
Proofing Editor-in-Chief: *Lian-Sheng Ma*

Responsible Science Editor: *Yuan Qi*  
Proofing Editorial Office Director: *Jin-Lei Wang*

NAME OF JOURNAL  
*World Journal of Gastroenterology*

ISSN  
ISSN 1007-9327 (print)  
ISSN 2219-2840 (online)

LAUNCH DATE  
October 1, 1995

FREQUENCY  
Weekly

EDITORS-IN-CHIEF  
**Damian Garcia-Olmo, MD, PhD, Doctor, Professor, Surgeon**, Department of Surgery, Universidad Autonoma de Madrid; Department of General Surgery, Fundacion Jimenez Diaz University Hospital, Madrid 28040, Spain

**Stephen C Strom, PhD, Professor**, Department of Laboratory Medicine, Division of Pathology, Karolinska Institutet, Stockholm 141-86, Sweden

**Andrzej S Tarnawski, MD, PhD, DSc (Med), Professor of Medicine, Chief Gastroenterology**, VA Long Beach Health Care System, University of California, Irvine, CA, 5901 E. Seventh Str., Long Beach,

CA 90822, United States

EDITORIAL BOARD MEMBERS  
All editorial board members resources online at <http://www.wjgnet.com/1007-9327/editorialboard.htm>

EDITORIAL OFFICE  
Jin-Lei Wang, Director  
Yuan Qi, Vice Director  
Ze-Mao Gong, Vice Director  
*World Journal of Gastroenterology*  
Baishideng Publishing Group Inc  
7901 Stoneridge Drive, Suite 501,  
Pleasanton, CA 94588, USA  
Telephone: +1-925-2238242  
Fax: +1-925-2238243  
E-mail: [editorialoffice@wjgnet.com](mailto:editorialoffice@wjgnet.com)  
Help Desk: <http://www.f6publishing.com/helpdesk>  
<http://www.wjgnet.com>

PUBLISHER  
Baishideng Publishing Group Inc  
7901 Stoneridge Drive, Suite 501,  
Pleasanton, CA 94588, USA  
Telephone: +1-925-2238242  
Fax: +1-925-2238243  
E-mail: [bpgoffice@wjgnet.com](mailto:bpgoffice@wjgnet.com)  
Help Desk: <http://www.f6publishing.com/helpdesk>

<http://www.wjgnet.com>

PUBLICATION DATE  
July 28, 2017

COPYRIGHT  
© 2017 Baishideng Publishing Group Inc. Articles published by this Open-Access journal are distributed under the terms of the Creative Commons Attribution Non-commercial License, which permits use, distribution, and reproduction in any medium, provided the original work is properly cited, the use is non commercial and is otherwise in compliance with the license.

SPECIAL STATEMENT  
All articles published in journals owned by the Baishideng Publishing Group (BPG) represent the views and opinions of their authors, and not the views, opinions or policies of the BPG, except where otherwise explicitly indicated.

INSTRUCTIONS TO AUTHORS  
Full instructions are available online at <http://www.wjgnet.com/bpg/gerinfo/204>

ONLINE SUBMISSION  
<http://www.f6publishing.com>



## Retrospective Cohort Study

# Clinical significance of glycemic parameters on venous thromboembolism risk prediction in gastrointestinal cancer

Fiorella Guadagni, Silvia Riondino, Vincenzo Formica, Girolamo Del Monte, Anna Maria Morelli, Jessica Lucchetti, Antonella Spila, Roberta D'Alessandro, David Della-Morte, Patrizia Ferroni, Mario Roselli

Fiorella Guadagni, David Della-Morte, Patrizia Ferroni, San Raffaele Roma Open University, 00166 Rome, Italy

Fiorella Guadagni, Silvia Riondino, Antonella Spila, Roberta D'Alessandro, Patrizia Ferroni, Interinstitutional Multidisciplinary Biobank, IRCCS San Raffaele Pisana, 00166 Rome, Italy

Silvia Riondino, Vincenzo Formica, Anna Maria Morelli, Jessica Lucchetti, Mario Roselli, Department of Systems Medicine, Medical Oncology Unit, Tor Vergata Clinical Center, University of Rome Tor Vergata, 00133 Rome, Italy

Girolamo Del Monte, Department of Palliative Care, San Raffaele Cassino, Clinical Center, 03043 Cassino, Italy

David Della-Morte, Department of Systems Medicine, University of Rome Tor Vergata, 00133 Rome, Italy

**Author contributions:** Guadagni F, Ferroni P and Roselli M designed the study, analyzed the data and wrote the paper; Riondino S and Della-Morte D analyzed the data and wrote the paper; Formica V, Del Monte G, Morelli AM and Lucchetti J enrolled the patients and collected clinical data; Spila A and D'Alessandro R performed the assays and collected laboratory data; all authors have read and approved the final version to be published; Ferroni P and Roselli M are co-senior authors for equal contribution.

**Institutional review board statement:** The study was reviewed and approved by the Scientific Institute for Research, Hospitalization and Health Care San Raffaele Pisana and by the Tor Vergata University Institutional Review Boards.

**Informed consent statement:** All study participants or their legal guardian provided informed written consent about personal and medical data collection prior to study enrolment.

**Conflict-of-interest statement:** All the Authors have no conflict of interest related to the manuscript.

**Data sharing statement:** No additional data are available.

**Open-Access:** This article is an open-access article which was selected by an in-house editor and fully peer-reviewed by external reviewers. It is distributed in accordance with the Creative Commons Attribution Non Commercial (CC BY-NC 4.0) license, which permits others to distribute, remix, adapt, build upon this work non-commercially, and license their derivative works on different terms, provided the original work is properly cited and the use is non-commercial. See: <http://creativecommons.org/licenses/by-nc/4.0/>

**Manuscript source:** Invited manuscript

**Correspondence to:** Patrizia Ferroni, MD, PhD, San Raffaele Roma Open University, Via di Val Cannuta 247, 00166 Rome, Italy. [patrizia.ferroni@sanraffaele.it](mailto:patrizia.ferroni@sanraffaele.it)

**Telephone:** +39-6-52253733

**Fax:** +39-6-52255668

**Received:** January 28, 2017

**Peer-review started:** February 9, 2017

**First decision:** April 21, 2017

**Revised:** May 4, 2017

**Accepted:** July 13, 2017

**Article in press:** July 13, 2017

**Published online:** July 28, 2017

## Abstract

### AIM

To investigate the possible predictive role of routinely used glycemic parameters for a first venous thromboembolism (VTE) episode in gastrointestinal (GI) cancer ambulatory patients - with or without clinically diagnosed type 2 diabetes (T2D) or obesity - treated with chemotherapy.

### METHODS

Pre-treatment fasting blood glucose, insulin, glycated hemoglobin (HbA<sub>1c</sub>) and homeostasis model of risk

assessment (HOMA) were retrospectively evaluated in a cohort study of 342 GI cancer patients. Surgery was performed in 142 (42%) patients with primary cancer, 30 (21%) and 112 (79%) of whom received neoadjuvant and adjuvant therapies, respectively. First-line chemotherapy was administered in 200 (58%) patients with metastatic disease. The study outcome was defined as the occurrence of a first symptomatic or asymptomatic VTE episode during active treatment.

## RESULTS

Impaired glucose tolerance (IGT) or T2D were diagnosed in 30% of GI cancer patients, while overweight/obesity had an incidence of 41%. VTE occurred in 9.4% of patients (7% of non-diabetic non-obese), especially in those with a high ECOG score ( $P = 0.025$ ). No significant association was found between VTE incidence and T2D, obesity, different tumor types, metastatic disease, Khorana class of risk, or different anti-cancer drugs, although VTE rates were substantially higher in patients receiving bevacizumab (17% *vs* 8%,  $P = 0.044$ ). Conversely, all glucose metabolic indexes were associated with increased VTE risk at ROC analysis. Multivariate Cox proportional analyses confirmed that HOMA index (HR = 4.13, 95%CI: 1.63-10.5) or fasting blood glucose (HR = 3.56, 95%CI: 1.51-8.39) were independent predictors of VTE occurrence during chemotherapy.

## CONCLUSION

The results here reported demonstrate that evaluating glucose metabolic asset may allow for VTE risk stratification in GI cancer, helping to identify chemotherapy-treated patients who might benefit from thromboprophylaxis. Further multicenter prospective studies involving a larger number of patients are presently needed.

**Key words:** Gastrointestinal cancer; Type 2 diabetes; Venous thromboembolism; Chemotherapy; Insulin resistance

© The Author(s) 2017. Published by Baishideng Publishing Group Inc. All rights reserved.

**Core tip:** The predictive value of pre-treatment fasting blood glucose, insulin, HbA<sub>1c</sub> and homeostasis model of risk assessment (HOMA) was investigated in a cohort of gastrointestinal (GI) cancer patients. Despite all investigated metabolic markers were associated with an increased VTE risk during chemotherapy at ROC analysis, only elevated HOMA index (HR = 4.13) or fasting blood glucose (HR = 3.56) had an independent predictive value in survival analyses after adjustment for major confounders. These results suggest that glycemic metabolic markers, mainly HOMA index, should be carefully monitored in chemotherapy-treated GI cancer patients, as they could help to identify patients who might benefit from thromboprophylaxis.

Guadagni F, Riondino S, Formica V, Del Monte G, Morelli AM, Lucchetti J, Spila A, D'Alessandro R, Della-Morte D, Ferroni P, Roselli M. Clinical significance of glycemic parameters on venous thromboembolism risk prediction in gastrointestinal cancer. *World J Gastroenterol* 2017; 23(28): 5187-5195 Available from: URL: <http://www.wjgnet.com/1007-9327/full/v23/i28/5187.htm> DOI: <http://dx.doi.org/10.3748/wjg.v23.i28.5187>

## INTRODUCTION

Cancer patients are at increased risk for venous thromboembolism (VTE)<sup>[1]</sup>. Among the different subtypes of tumors, pancreas, stomach, or other gastrointestinal (GI) (*i.e.*, esophagus, liver, biliary) cancers have been reported to have the highest risk for incident VTE, whereas colorectal cancer is generally considered at low risk<sup>[2,3]</sup>. Furthermore, the individual risk of VTE in GI cancers could be boosted by active treatment, and the use of new biological drugs has led to a clinically relevant increase in thromboembolic complications, as in the case of bevacizumab in colorectal carcinoma<sup>[1,4]</sup>.

Beside cancer- and treatment-related factors, VTE risk might be influenced by patient's individual factors and co-morbidities<sup>[1]</sup>. The possibility that co-morbidities, such as type 2 diabetes (T2D)<sup>[5-8]</sup> or obesity<sup>[9-11]</sup> may be linked to an increased risk of VTE has been raised in the general population, and VTE has been proposed as a marker of underlying cancer - especially of the GI tract - in patients with T2D<sup>[12]</sup>. However, data are often confusing and no consensus exists on the impact of these two co-morbid conditions on VTE incidence<sup>[13]</sup>, especially in the oncology setting.

Independently of an association between clinically diagnosed T2D, or obesity, and VTE, elevated levels of fasting blood glucose, glycated hemoglobin (HbA<sub>1c</sub>) or insulin resistance [IR, evaluated by the homeostasis model of risk assessment (HOMA)] have all been associated with an increased risk of VTE, either unprovoked<sup>[14-19]</sup> or cancer-associated<sup>[20]</sup>. The possibility of a causal link between hyperglycemia (and, thus, HbA<sub>1c</sub> or the composite HOMA index) and VTE occurrence is biologically plausible and supported by the experimental finding that, in healthy non-diabetic subjects, increased blood glucose levels enhances blood coagulation<sup>[21]</sup>. However, the association between hyperglycemia (assessed according to HbA<sub>1c</sub>) and VTE risk has been recently disproved<sup>[22]</sup>.

It is worth noticing that all these evidences derived from studies performed in non-cancer patients. To the best of our knowledge, there are no data, so far, that specifically addressed this issue in oncologic patients, with the only exception of a study by our group demonstrating that breast cancer women with IR had an increased risk of chemotherapy-associated VTE - independently of T2D, or other related risk factors<sup>[20]</sup>.

**Table 1 Patients' characteristics *n* (%)**

Characteristics	<i>P</i> value
Age (yr), mean $\pm$ SD (range)	65 $\pm$ 10 (30-85)
Gender	
Male	197 (58)
Female	145 (42)
Length of follow-up (mo), median (IQR)	11 (6-24)
Venous thromboembolism	
Pulmonary embolism	9 (2.6)
Deep venous thrombosis	22 (6.4)
Portal vein thrombosis	2 (0.6)
Port-a-Cath	1 (0.3)
Cumulative frequency	34 (9.9)
Khorana Class of risk	
Low	199 (58)
Intermediate	118 (35)
High	25 (7)
Site of primary	
Colon-rectum	237 (69)
Stomach	38 (11)
Pancreas	36 (11)
Biliary tract	16 (5)
Oesophagus	15 (4)
Stage of disease	
Primary	142 (42)
Metastatic	200 (58)
Performance status (ECOG)	
0	274 (80)
1	60 (18)
2	8 (2)
Body mass index, mean $\pm$ SD (range)	24.9 $\pm$ 4.0 (14.8-39.5)
Normoweight	200 (58)
Overweight	106 (31)
Obese	36 (11)
Type 2 diabetes	79 (23)
Impaired glucose tolerance	23 (7)

IQR: Interquartile range; ECOG: Eastern Cooperative Oncology Group.

IR, hyperglycemia and T2D are associated with several cancer types, other than breast, and accumulating evidence indicates that they could represent shared pathophysiological mechanisms in GI cancer and its co-morbidities. Accordingly, we hypothesized that, as in the case of breast cancer, a de-regulated glucose metabolism could be involved in GI cancer-associated VTE, as well. Therefore, the present study was designed to investigate the possible predictive role of routinely used glycemic parameters for a first VTE episode in GI cancer out-patients - with or without clinically diagnosed T2D - in whom chemotherapy might act as a thrombotic trigger.

## MATERIALS AND METHODS

### **Patients and sample collection**

Starting from January 2007, the PTV Bio.Ca.Re. (Policlinico Tor Vergata Biospecimen Cancer Repository) and the Interinstitutional Multidisciplinary Biobank of the IRCCS San Raffaele Pisana (SR-BioBIM, Rome, Italy) are actively involved in the recruitment of ambulatory patients with primary or relapsing/metastatic cancer, who are prospectively

followed under the appropriate Institutional ethics approvals, as part of a Clinical Database and Biobank project. Among them, 342 patients with GI cancer completed the clinical assessment for VTE. Inclusion criteria for patients whose serum samples were stored in our Biobanks were: age above 18 years, to be at the start of a first chemotherapy regimen, an Eastern Cooperative Oncology Group performance status (ECOG-PS)  $\leq$  2 and adequate hematological, hepatic and renal functions. Exclusion criteria were: therapeutic doses of any heparin before enrolment or treatment with anticoagulant or anti-platelet drugs. No patient underwent surgery during follow-up, nor was admitted to clinic for an acute medical illness requiring thromboprophylaxis.

GI cancer was staged according to the TNM classification. Surgery was performed in 142 patients with primary cancer. The remaining 200 patients had metastatic disease and entered the study prior to the start of chemotherapy. Among the non-metastatic population, 30/142 (21%) and 112/142 (79%) patients received neoadjuvant and adjuvant therapies, respectively. First-line chemotherapy was instituted in all patients with metastatic disease. Details on anti-cancer drugs are summarized in Supplementary Table 1. Erythropoiesis stimulating agents (2.6%), granulocyte colony stimulating factor (3.5%) and steroids (17.6%) were used as supportive drugs. Patients' characteristics are summarized in Table 1.

Patients were regularly seen at scheduled visits; additional visits were arranged at the occurrence of clinically suspected VTE. Initial VTE risk stratification was performed by the Khorana Score (KS) at a  $\geq$  3-point cutoff, as per current recommendation<sup>[23]</sup>. All patients were followed up for a median period of 11 mo, during which outcomes were prospectively recorded. The study outcome was defined as the occurrence of a first symptomatic or asymptomatic VTE episode during active treatment. Deep vein thrombosis (DVT) was confirmed by venography or color-coded duplex sonography (in proximal DVT only). Pulmonary embolism (PE) was diagnosed by spiral computed tomography.

The study was performed in accordance with the principles embodied in the Declaration of Helsinki. All patients gave written informed consent, previously approved by our Institutional Review Boards.

### **Blood sampling and assessment of glycemic indexes**

Fasting serum samples were obtained prior to chemotherapy from each recruited subject, aliquoted and stored at -80 °C in the facilities of the PTV Bio.Ca.Re. or of the SR-BioBIM. Routine chemistry studies, including fasting blood glucose (Hexokinase/Glucose-6-phosphate dehydrogenase-based methodology; Abbott Laboratories, Abbott Park, IL, United States), were performed on fresh samples within one hour from blood withdrawal on an ARCHITECT c8000 System (Abbott



**Table 2** Glycemic indexes in gastrointestinal cancer patients - Comparison between patients who developed or not venous thromboembolism during chemotherapy

	Whole cohort	Venous thromboembolism		<i>P</i> value <sup>1</sup>
		Yes ( <i>n</i> = 34)	No ( <i>n</i> = 308)	
Glycemia (mg/dL), mean ± SD (range)	107 ± 38 (51-415)	122 ± 53 (60-339)	105 ± 36 (51-415)	0.019
Insulinemia (μIU/mL), median (IQR)	12.5 (8.8-20.1)	17.2 (11.9-24.5)	11.6 (8.7-18.6)	0.016
HOMA index, median (IQR)	3.0 (2.0-5.6)	4.8 (3.0-8.1)	2.8 (2.0-4.9)	0.006
HbA <sub>1c</sub> (%), mean ± SD (range)	6.1 ± 0.8 (4.3-13.0)	6.2 ± 0.6 (5.2-8.0)	6.1 ± 0.8 (4.3-13.0)	0.436

<sup>1</sup>Student *t*-test or Mann-Whitney *U* test were used for normally distributed or non parametric variables, respectively. IQR: Interquartile range.

Laboratories). Fasting insulin levels were analyzed on serum samples using a fully automated Lumipulse G 600 II chemiluminescent enzyme immunoassay analyzer (Fujirebio Inc. Tokyo, Japan) according to the manufacturer's instructions. The HOMA index (a marker of insulin resistance) was retrospectively calculated for each participating subject from fasting blood glucose and insulin according to the formula: glucose (mg/dL) × insulin (μIU/mL)/405.

HbA<sub>1c</sub> levels were immediately measured on EDTA anticoagulated whole blood by a Tosoh G7 Automated HPLC Analyzer - HbA<sub>1c</sub> Variant Analysis Mode (Tosoh Bioscience, Rivoli, TO, Italy), certified by the NGSP (National Glycohemoglobin Standardization Program) and traceable to the Diabetes Control and Complications Trial.

All measurements were ascertained while blinded to the sample origin and to the study endpoint.

### Statistical analysis

Sample size of the study was based on the agreement to inclusion criteria and willingness to provide informed consent rather than on sample size calculations. However, estimation was later performed and showed that the recruited population was capable of yielding a power > 90%, at a two-sided 5% significance level. This was based on the assumption of a true HR of at least 2 (based on previous data on breast cancer)<sup>[20]</sup>, an accrual period of no less than 2 years, an elapsed time between cycles within 30 d, and a median time-to-event of 2.5 mo.

Data are presented as percentages, mean ± SD, or median and interquartile range (IQR). Differences between percentages were assessed by  $\chi^2$  test. Appropriate parametric or nonparametric tests were employed for group comparison. The cut-off values were generated from continuous data by receiver operating characteristic (ROC) curve analyses performed by MedCalc Statistical Software version 13.1.2 (MedCalc Software bvba, Ostend, Belgium; <http://www.medcalc.org>; 2014). Bayesian analysis was performed, and positive (+LR) and negative (-LR) likelihood ratios were used to estimate the probability of having or not VTE. Cox proportional hazards analysis was performed with a free web-based application (<http://statpages.org/>). Survival curves were calculated by the Kaplan-Meier and log-rank methods using a computer software

package (Statistica 8.0, StatSoft Inc., Tulsa, OK, United States). VTE-free survival time was calculated from the date of enrolment until the date of any VTE occurrence, or of the last follow-up. For administrative censoring, follow-up was ended on September 30<sup>th</sup>, 2016. For patients receiving neoadjuvant chemotherapy follow-up was terminated at completion of an entire antineoplastic treatment and before surgery. All tests were two-tailed and only *P* values lower than 0.05 were regarded as statistically significant.

## RESULTS

A condition of impaired glucose tolerance (IGT)/T2D was diagnosed in 30% of patients, while overweight (*n* = 105) or obesity (*n* = 35) was observed in 41% of cases. It is well recognized that overweight/obesity increases the chances of developing T2D; accordingly, the rate of T2D rose from 19% in normoweight to 27% and 36% in overweight and obese patients, respectively (*P* = 0.122). The distribution of glucose metabolic indexes is reported in Table 2. As shown, median pre-chemotherapy HOMA index was 3.0 in the overall GI cancer cohort (IQR: 2.0-5.6). As expected, median HOMA index was associated with BMI and increased steadily from 2.5 in normoweight to 3.8 and 3.9 in overweight and obese patients, respectively (Kruskal-Wallis *H* = 18.8, *P* = 0.0001). Similarly, IR was associated with the presence of IGT (median HOMA index 4.3) or T2D (median HOMA index 6.7).

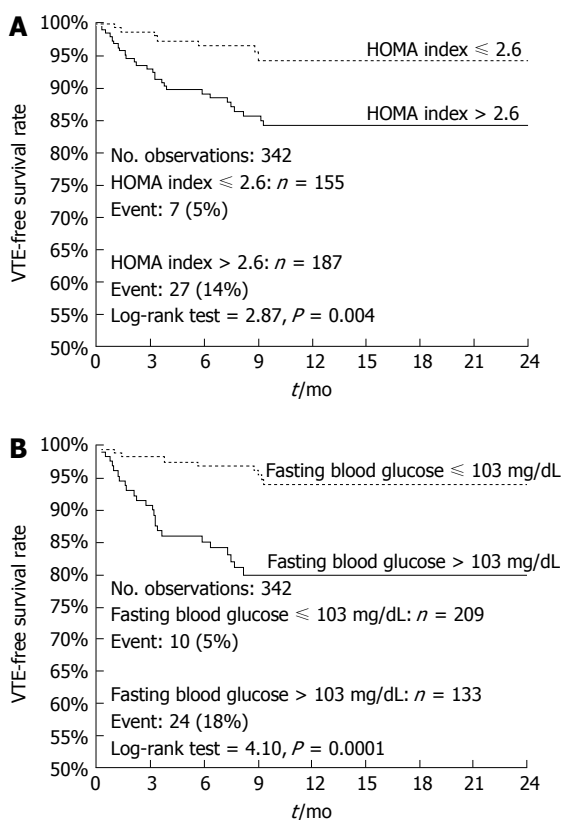
VTE occurred in 9.9% (Table 1) of GI cancer patients (median TTE: 3.2 mo) (7.5% of non-diabetic non-obese patients), in agreement with previous reports<sup>[1]</sup>. In particular, 15 (3 non fatal sub-segmental PE, 2 portal vein thrombosis and 10 DVT) patients were incidentally diagnosed with asymptomatic VTE at time of CT-scan for restaging. Symptomatic VTE was diagnosed in the remaining 19 patients. Clinical characteristics of all 34 patients with VTE are reported in Supplementary Table 2.

Of interest, only 2 (8%) VTE events were recorded among the 25 classified as high-risk for VTE, as per current guidelines<sup>[23]</sup>. Conversely, VTE occurred in 10% and 11% of patients classified as low- or intermediate-risk according to Khorana<sup>[23]</sup>, respectively. VTE incidence increased with high ECOG-PS (*P* = 0.025), but no significant difference was observed for VTE rates

**Table 3** Receiver operating characteristics and Bayesian analysis of venous thromboembolism predictive value of glycemic parameters

	Fasting blood glucose	Fasting insulin	HOMA	HbA <sub>1c</sub>
AUC (SE)	0.636 (0.06)	0.630 (0.05)	0.647 (0.05)	0.574 (0.06)
95%CI	0.582-0.687	0.576-0.681	0.593-0.697	0.519-0.627
Criterion <sup>1</sup>	103 mg/dL	12 $\mu$ IU/mL	2.6	6.0%
Sensitivity	75%	75%	81%	59%
Specificity	65%	51%	48%	63%
PPV	18%	14%	14%	14%
NPV	96%	95%	96%	94%
+LR (CI)	2.12 (1.54-2.57)	1.54 (1.13-1.85)	1.56 (1.19-1.81)	1.60 (1.07-2.13)
-LR (CI)	0.39 (0.19-0.68)	0.49 (0.23-0.87)	0.39 (0.16-0.78)	0.65 (0.38-0.96)
P value <sup>2</sup>	0.0135	0.0128	0.0045	0.1989

<sup>1</sup>Corresponding with highest Youden index; <sup>2</sup>Significance level P (Area = 0.5). AUC: Area under the curve; PPV: Positive predictive value; NPV: Negative predictive value; +LR: Positive likelihood ratio; -LR: Negative likelihood ratio.



**Figure 1** Kaplan-Meier curves of venous thromboembolism-free survival of the whole cohort of gastrointestinal cancer patients. Comparison between patients stratified on HOMA index (Panel A; HR = 3.17, 95%CI: 1.61-6.23) or fasting blood glucose (Panel B; HR = 4.21, 95%CI: 2.09-8.46).

among patients with colorectal ( $n = 25$ , 11%), gastro-esophageal ( $n = 5$ , 9.5%) or pancreatobiliary ( $n = 4$ , 7.7%) carcinomas. Similarly, no association was found with other clinical variables, such as metastatic disease, T2D, obesity, or different chemotherapy regimens, although VTE rates were higher in patients receiving bevacizumab (17% vs 8%,  $P = 0.044$ ). On the other hand, pre-treatment fasting blood glucose, insulin, HOMA index, but not HbA<sub>1c</sub>, were higher in patients who developed VTE during treatment compared with those who did not (Table 2).

ROC curves and bayesian analysis was, then,

carried out to analyze the predictive performances of glycemic parameters. Details are reported in Table 3, showing that pre-treatment fasting blood glucose, insulin and the composite HOMA index, but to a lesser extent HbA<sub>1c</sub> levels, were all associated with a significant probability of having or not VTE during chemotherapy. Hence, cut-off levels corresponding to the criteria associated with the highest Youden indexes were employed for patients' categorization and subsequent analyses. Multivariate Cox proportional analysis showed that, among all variables listed in Table 4, only ECOG-PS (HR = 2.47, 95%CI: 1.22-4.99) and HOMA index (HR = 4.13, 95%CI: 1.63-10.5) acted as independent VTE predictors (Overall Model Fit: Chi Square = 30.5,  $P = 0.0004$ ). Of interest, when HOMA index was replaced by the individual parameters in an otherwise similar model of Cox analysis, only fasting blood glucose retained significance for VTE risk prediction (HR = 3.56, 95%CI: 1.51-8.39), along with ECOG-PS (HR = 2.34, 95%CI: 1.17-4.69) (Overall Model Fit:  $\chi^2 = 36.9$ ,  $P = 0.0001$ ). Inclusion of anti-cancer drugs other than bevacizumab into multivariate models did not substantially modify the results obtained (data not shown).

Figure 1 demonstrates the Kaplan-Meier curves for VTE-free survival of GI cancer patients stratified on the basis of pre-treatment HOMA index (Figure 1A) or blood glucose levels (Figure 1B). As shown, patients with a HOMA index > 2.6 had a worse 1-year VTE-free survival rate compared to patients with a HOMA index below this cutoff (83% vs 94%, log-rank = 3.0,  $P = 0.003$ ) (Figure 1A). Similarly, patients with glucose levels >103 mg/dL had a worse 1-year VTE-free survival rate compared to patients with glucose levels below this cutoff (78% vs 94%, log-rank = 4.5,  $P < 0.0001$ ) (Figure 1B). These results were substantially confirmed in a sub-set of 261 non-obese non-diabetic GI cancer patients (Figure 2).

## DISCUSSION

Diabetes and obesity have often been related with increased risk of VTE in the general population, but the

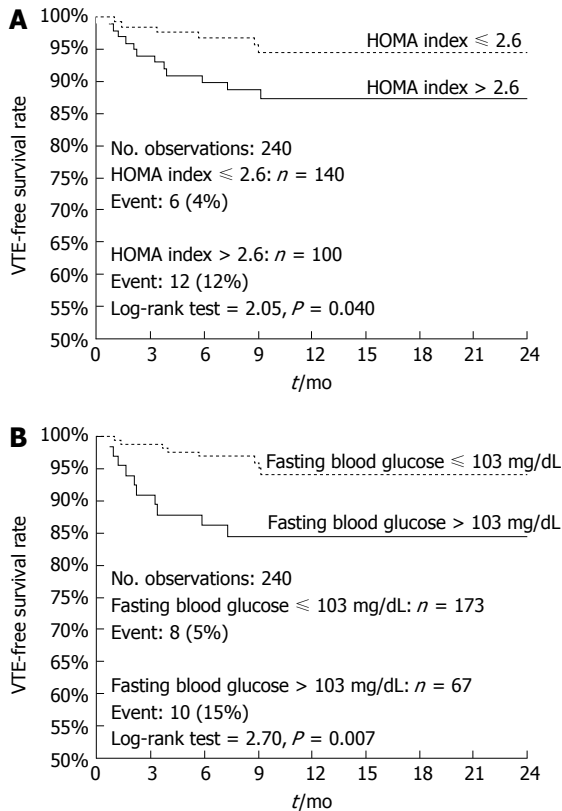
**Table 4** Cox proportional hazards survival regression analysis of the predictive value of clinical-pathological variables and glycemic indexes on venous thromboembolism-free survival of gastrointestinal cancer patients *n* (%)

Variable	<i>n</i>	VTE		HR (CI)	<i>P</i> value
		Yes	No		
Sex					
Male	197	17 (9)	180 (91)		
Female	145	17 (12)	128 (88)	0.48 (0.24-0.97)	0.040
Age					
≤ 65 yr	157	9 (6)	148 (94)		
> 65 yr	185	25 (14)	160 (86)	2.15 (0.96-4.79)	0.062
Diabetes					
No	240	20 (8)	220 (92)		
IGT	23	2 (9)	21 (91)		
T2D	79	12 (15)	67 (85)	0.94 (0.62-1.41)	0.748
Tumor site					
Colorectal	237	25 (11)	212 (89)		
Stomach	38	3 (8)	35 (92)		
Esophagus	15	2 (13)	13 (87)		
Pancreas	36	3 (8)	33 (92)		
Biliary tract	16	1 (6)	15 (94)	0.78 (0.53-1.14)	0.201
Khorana class of risk					
Low	199	19 (10)	180 (90)		
Intermediate	118	13 (11)	105 (89)		
High	25	2 (8)	23 (92)	1.20 (0.64-2.26)	0.562
Stage of disease					
Primary	142	9 (6)	133 (94)		
Metastatic	200	25 (12)	175 (88)	1.81 (0.75-4.33)	0.186
ECOG-PS					
0	274	24 (9)	250 (91)		
1	60	7 (12)	53 (88)		
2	8	3 (37)	5 (62)	2.47 (1.22-4.99)	0.012
Homa index					
≤ 2.6%	155	7 (5)	148 (95)		
> 2.6%	187	27 (14)	160 (86)	4.13 (1.63-10.5)	0.003
Bevacizumab					
No	270	22 (8)	248 (92)		
Yes	72	12 (17)	60 (83)	1.77 (0.74-4.25)	0.199

ECOG-PS: Eastern Cooperative Oncology Group performance status; T2D: Type 2 diabetes; IGT: Impaired glucose tolerance; VTE: Venous thromboembolism.

evidences on their association in the oncology setting are sparse. Here we report, for the first time to our knowledge, that a condition of IR (assessed by the glucose/insulin composite HOMA index) associates to an increased risk of VTE in GI cancer out-patients on active chemotherapy. In particular, we demonstrate that a HOMA index > 2.6 at time of chemotherapy start is predictive for a first VTE event, independently of T2D, obesity or other well known risk factors, such as tumor site and stage or ECOG-PS. This correlation appears to be strongly dependent on blood glucose levels, rather than on insulin, as demonstrated by multivariate analyses in which glycemia, but not insulinemia, confirmed its independent association with VTE. Of note, HbA<sub>1c</sub> - a marker of sustained hyperglycemia over the previous 2-3 mo - associated with VTE only in non diabetic GI cancer patients, with a HR of 3.12 (95%CI: 1.21-8.07, *P* = 0.02) independently of sex, age, BMI, IGT, ECOG-PS, and tumor site and stage, possibly as a result of the confounding effect of glycemic pharmacologic control in T2D (data not shown).

These results are scarcely comparable with literature data, as the majority of the studies investigated the predictive role of these metabolic features in the general population. Nonetheless, the finding of an independent predictive role of elevated fasting blood glucose levels in the GI cancer setting is in agreement with the results by Tala *et al*<sup>[18]</sup>, demonstrating a 4.1 odds ratio of VTE in critically ill children with hyperglycemia. Similarly, Di Minno *et al*<sup>[14]</sup> indicated that impaired fasting glucose independently predicted idiopathic VTE in adults. Furthermore, the data here reported are partially in agreement with previously published results demonstrating that high HOMA scores were associated with an increased risk of VTE in the general population, which, however, was dependent on BMI<sup>[19]</sup>. This finding was further confirmed by Gariani *et al*<sup>[24]</sup>, who suggested that the increased risk of diabetes-associated VTE might result from confounders (*i.e.*, obesity) rather than an intrinsic effect of diabetes. On the other hand, the predictive value of HOMA index in our analysis was independent of a condition of overweight/obesity, validating our previous results



**Figure 2** Kaplan-Meier curves of venous thromboembolism-free survival of non-diabetic non-obese gastrointestinal cancer patients. Comparison between patients stratified on HOMA index (Panel A; HR = 2.67, 95%CI: 1.05-6.80) or fasting blood glucose (Panel B; HR = 3.38, 95%CI: 1.19-9.57).

in a breast cancer cohort, in which a HOMA index greater than 2.5 (the cutoff for normality) predicted chemotherapy-associated VTE, independently of other components of the metabolic syndrome (BMI, T2D and HDL cholesterol)<sup>[20]</sup>.

As stated above, the possibility of a causal link between hyperglycemia and VTE occurrence is biologically plausible and supported by the finding that increased blood glucose levels enhances blood coagulation in healthy non-diabetic individuals<sup>[21]</sup>. Additional evidence on the role of hyperglycemia on coagulation activation derives from experimental data suggesting that hyperglycemia may cause vessel damage through at least three apparently unrelated pathways: advanced glycation end product formation, activation of protein kinase C, and sorbitol accumulation by way of the polyol pathway (for a review see<sup>[25]</sup>). Furthermore, hyperglycemia *via* increased oxidative stress, and receptor for advanced glycation end products activation, increases the activation of transcription factor- $\kappa$ B in endothelial cells, thus causing a switch of the endothelial functions toward a pro-thrombotic, pro-inflammatory condition. This, together with an altered platelet metabolism and changes in intraplatelet signaling pathways, contributes to the pathogenesis of the thrombotic complications of T2D<sup>[25]</sup>. Of interest, in this study, elevated HbA<sub>1c</sub> levels

were significantly associated with increased mean platelet volumes (a marker of platelet hyperactivity available for 214 patients) either in the overall cohort (regression coefficient = 0.235,  $P = 0.0006$ ) or in non-diabetic non-obese (regression coefficient = 0.239,  $P = 0.004$ ) GI cancer patients, independently of age, sex or BMI (data not shown), thus suggesting a role for sustained hyperglycemia in the procoagulant status of these patients. However, this hypothesis is purely speculative, since the present study was not specifically designed to address this issue and, as such, it deserves further investigation.

Whichever the mechanism involved, cancer-associated VTE poses serious concerns both in terms of patient care and health costs, while thromboprophylaxis could provide an opportunity to substantially improve clinical management. Nonetheless, international consensus guidelines do not recommend routine prophylaxis for the primary prevention of VTE in cancer outpatients receiving chemotherapy, except for pancreatic cancer or selected high-risk patients<sup>[23,25,26]</sup>. To aid in VTE risk assessment, the use of Khorana score is currently recommended<sup>[23]</sup>. In the present study, the Khorana score was used to provide an initial estimate of VTE risk in GI cancer patients. However, it correctly identified VTE only in two gastric cancer patients (one normoweight diabetic and one overweight non diabetic) out of 25 patients classified as high-risk, both with IR. Conversely, 8.6% and 11% of patients classified as low- or intermediate-risk according to Khorana, had VTE. This is in agreement with recent findings suggesting that the major weakness of this scoring system is represented by the high proportion of the patients (> 50%) falling into the intermediate risk category<sup>[27]</sup>, which also encompasses the majority of events<sup>[27-29]</sup>. At this point, it should be emphasized that, in the low- or intermediate-risk classes, 13 of 17 (77%) and 11 of 13 (85%) patients with VTE, respectively, had a HOMA index above the 2.6 cut-off. Thus, HOMA index, or other glucose metabolism parameters, could be employed in expanded risk scoring models, or newly developed clinical decision support systems<sup>[30]</sup> without causing an excessive increase in patients' management costs.

There are some limitations to acknowledge for this study. First of all, glucose metabolic parameters were retrospectively evaluated. However, all eligible consecutive patients within the designated timeframe were included and prospectively followed up, and all measurements were performed while blinded to the patient outcome. Secondly, recruitment was mono-institutional, and therefore might have limited external validity. Finally, analyses were conducted on a relatively small sample size, ultimately leading to a small number of events. Nonetheless, the results here reported suggest that a deregulation of glucose metabolism might contribute to VTE pathogenesis in chemotherapy-treated ambulatory cancer patients. To



the best of our knowledge, this is the first evidence reporting an association between HOMA index and VTE in GI cancer patients. At present, we may hypothesize that chemotherapy triggers a pro-thrombotic state, subdued in patients with hyperglycemia, independently of clinically overt T2D. Additional studies are required to validate this theory, as VTE can be influenced by many environmental or inherited factors that increase the likelihood of detecting spurious associations.

In conclusion, the results here reported demonstrate that the evaluation of glucose metabolic asset may allow for VTE risk stratification in GI cancer, helping to identify chemotherapy-treated patients who might benefit from thromboprophylaxis. Further multicenter prospective studies involving a larger number of patients are presently needed.

## ACKNOWLEDGMENTS

The team expresses deep gratitude to all patients and their families for providing the opportunity to conduct the present research project. Authors also wish to thank the nursery staff of the Day Hospital of the Medical Oncology Unit, Tor Vergata Clinical Center who have contributed and supported the researchers to the overall success of the PTV Bio.Ca.Re. project.

## COMMENTS

### Background

The possibility of a causal link between hyperglycemia and venous thromboembolism (VTE) occurrence is supported by the experimental finding that, in healthy non-diabetic subjects, increasing blood glucose levels enhances blood coagulation. Accordingly, metabolic markers of impaired glucose metabolism have been associated with an increased risk of VTE in the general population, but little is known about their predictive significance in chemotherapy-treated cancer patients. The few available data come from a recent study demonstrating that breast cancer women with insulin resistance had an increased risk of chemotherapy-associated VTE, independently of type 2 diabetes (T2D), obesity, or other related risk factors.

### Research frontiers

Future investigations specifically designed to address the predictive role of insulin resistance or hyperglycemia for VTE risk assessment may provide the rationale for their inclusion in expanded risk scoring models, or newly developed clinical decision support systems.

### Innovations and breakthroughs

This study provides evidences that pre-treatment blood glucose levels or the composite homeostasis model of risk assessment (HOMA) index may allow for VTE risk stratification in GI cancer patients. Glycemic metabolic markers should be carefully monitored, independently of T2D or obesity, as they could provide important information for VTE risk prediction.

### Applications

Clinicians should be alert to the pro-coagulant risk of impaired glycemic control and advise patients about lifestyle intervention, weight loss, and exercise as a part of their therapeutic plan. In the context of a precision medicine approach, incorporation of pre-treatment fasting glycemia - or HOMA index - in expanded risk scoring models, or newly developed clinical decision support systems might improve risk prediction without causing an excessive increase in patients' management costs.

## Terminology

HbA<sub>1c</sub> provides an estimate of average blood glucose levels over the previous three months and is used as a marker of glycemic control in the management of T2D. HOMA index, derived from blood glucose and insulin levels, is a non invasive parameter of insulin resistance in pathologic states, such as diabetes and obesity.

## Peer-review

The article is interesting, methods of the study are presented concisely and there are no objections about it. The study deals with an important problem of treatment strategy in the large group of cancer patients, though the small number of subjects tends to show preliminary character of the study and does not allow to draw population conclusions.

## REFERENCES

- 1 **Khorana AA**, Dalal M, Lin J, Connolly GC. Incidence and predictors of venous thromboembolism (VTE) among ambulatory high-risk cancer patients undergoing chemotherapy in the United States. *Cancer* 2013; **119**: 648-655 [PMID: 22893596 DOI: 10.1002/cncr.27772]
- 2 **Walker AJ**, Card TR, West J, Crooks C, Grainge MJ. Incidence of venous thromboembolism in patients with cancer - a cohort study using linked United Kingdom databases. *Eur J Cancer* 2013; **49**: 1404-1413 [PMID: 23146958 DOI: 10.1016/j.ejca.2012.10.021]
- 3 **Petterson TM**, Marks RS, Ashrani AA, Bailey KR, Heit JA. Risk of site-specific cancer in incident venous thromboembolism: a population-based study. *Thromb Res* 2015; **135**: 472-478 [PMID: 25547213 DOI: 10.1016/j.thromres.2014.12.013]
- 4 **Ferroni P**, Formica V, Roselli M, Guadagni F. Thromboembolic events in patients treated with anti-angiogenic drugs. *Curr Vasc Pharmacol* 2010; **8**: 102-113 [PMID: 19485903 DOI: 10.2174/157016110790226660]
- 5 **Petrauskiene V**, Falk M, Waernbaum I, Norberg M, Eriksson JW. The risk of venous thromboembolism is markedly elevated in patients with diabetes. *Diabetologia* 2005; **48**: 1017-1021 [PMID: 15778859 DOI: 10.1007/s00125-005-1715-5]
- 6 **Stein PD**, Goldman J, Matta F, Yaekoub AY. Diabetes mellitus and risk of venous thromboembolism. *Am J Med Sci* 2009; **337**: 259-264 [PMID: 19365171 DOI: 10.1097/MAJ.0b013e31818bbb8b]
- 7 **Eyadiei C**, Hamm RM, Scheid DC. In adults with type 2 diabetes mellitus, are patients with poor control more likely to develop venous thromboembolism compared to patients with good control? *J Okla State Med Assoc* 2014; **107**: 65-66 [PMID: 24761554]
- 8 **Mi Y**, Yan S, Lu Y, Liang Y, Li C. Venous thromboembolism has the same risk factors as atherosclerosis: A PRISMA-compliant systemic review and meta-analysis. *Medicine (Baltimore)* 2016; **95**: e4495 [PMID: 27512866 DOI: 10.1097/MD.0000000000004495]
- 9 **Steffen LM**, Cushman M, Peacock JM, Heckbert SR, Jacobs DR Jr, Rosamond WD, Folsom AR. Metabolic syndrome and risk of venous thromboembolism: Longitudinal Investigation of Thromboembolism Etiology. *J Thromb Haemost* 2009; **7**: 746-751 [PMID: 19175496 DOI: 10.1111/j.1538-7836.2009.03295.x]
- 10 **Delluc A**, De Moreuil C, Kerspern H, Le Moigne E, Mottier D, Tromeur C, Carre JL, Le Gal G, Lacut K. Body mass index, a major confounder to insulin resistance association with unprovoked venous thromboembolism. Results from the EDITH case-control study. *Thromb Haemost* 2013; **110**: 593-597 [PMID: 23803721 DOI: 10.1160/TH13-01-0048]
- 11 **Puurunen MK**, Gona PN, Larson MG, Murabito JM, Magnani JW, O'Donnell CJ. Epidemiology of venous thromboembolism in the Framingham Heart Study. *Thromb Res* 2016; **145**: 27-33 [PMID: 27442716 DOI: 10.1016/j.thromres.2016.06.033]
- 12 **Christensen DH**, Horváth-Puhó E, Thomsen RW, Knudsen ST, Dekkers O, Prandoni P, Sørensen HT. Venous thromboembolism and risk of cancer in patients with diabetes mellitus. *J Diabetes Complications* 2016; **30**: 603-607 [PMID: 26874682 DOI: 10.1016/j.jdiacomp.2016.01.011]



- 13 **Heit JA.** Epidemiology of venous thromboembolism. *Nat Rev Cardiol* 2015; **12**: 464-474 [PMID: 26076949 DOI: 10.1038/nrcardio.2015.83]
- 14 **Di Minno MN,** Tufano A, Guida A, Di Capua M, De Gregorio AM, Cerbone AM, Tarantino G, Di Minno G. Abnormally high prevalence of major components of the metabolic syndrome in subjects with early-onset idiopathic venous thromboembolism. *Thromb Res* 2011; **127**: 193-197 [PMID: 21236470 DOI: 10.1016/j.thromres.2010.12.005]
- 15 **Dentali F,** Squizzato A, Caprioli M, Fiore V, Bernasconi M, Paganini E, Ageno W, Venco A, Grandi AM. Prevalence of arterial and venous thromboembolic events in diabetic patients with and without the metabolic syndrome: a cross sectional study. *Thromb Res* 2011; **127**: 299-302 [PMID: 21216446 DOI: 10.1016/j.thromres.2010.12.006]
- 16 **Bell EJ,** Selvin E, Lutsey PL, Nambi V, Cushman M, Folsom AR. Glycemia (hemoglobin A1c) and incident venous thromboembolism in the Atherosclerosis Risk in Communities cohort study. *Vasc Med* 2013; **18**: 245-250 [PMID: 24165467 DOI: 10.1177/1358863X13506764]
- 17 **Hermanides J,** Cohn DM, Devries JH, Kamphuisen PW, Huijgen R, Meijers JC, Hoekstra JB, Büller HR. Venous thrombosis is associated with hyperglycemia at diagnosis: a case-control study. *J Thromb Haemost* 2009; **7**: 945-949 [PMID: 19422464 DOI: 10.1111/j.1538-7836.2009.03442.x]
- 18 **Tala JA,** Silva CT, Pemira S, Vidal E, Faustino EV. Blood glucose as a marker of venous thromboembolism in critically ill children. *J Thromb Haemost* 2014; **12**: 891-896 [PMID: 24708410 DOI: 10.1111/jth.12583]
- 19 **Van Schouwenburg IM,** Mahmoodi BK, Veeger NJ, Bakker SJ, Kluin-Nelemans HC, Meijer K, Gansevoort RT. Insulin resistance and risk of venous thromboembolism: results of a population-based cohort study. *J Thromb Haemost* 2012; **10**: 1012-1018 [PMID: 22443091 DOI: 10.1111/j.1538-7836.2012.04707.x]
- 20 **Ferroni P,** Roselli M, Riondino S, Cavaliere F, Guadagni F. Insulin resistance as a predictor of venous thromboembolism in breast cancer. *Endocr Relat Cancer* 2016; **23**: L25-L28 [PMID: 27185869 DOI: 10.1530/ERC-16-0187]
- 21 **Stegenga ME,** van der Crabben SN, Blümer RM, Levi M, Meijers JC, Serlie MJ, Tanck MW, Sauerwein HP, van der Poll T. Hyperglycemia enhances coagulation and reduces neutrophil degranulation, whereas hyperinsulinemia inhibits fibrinolysis during human endotoxemia. *Blood* 2008; **112**: 82-89 [PMID: 18316629 DOI: 10.1182/blood-2007-11-121723]
- 22 **Lerstad G,** Brodin EE, Enga KF, Jorde R, Schirmer H, Njølstad I, Svartberg J, Braekkan SK, Hansen JB. Hyperglycemia, assessed according to HbA1c, and future risk of venous thromboembolism: the Tromsø study. *J Thromb Haemost* 2014; **12**: 313-319 [PMID: 24382156 DOI: 10.1111/jth.12498]
- 23 **Khorana AA,** Otten HM, Zwicker JJ, Connolly GC, Bancel DF, Pabinger I; Subcommittee on Haemostasis and Malignancy of the Scientific and Standardization Committee of the International Society on Thrombosis and Hemostasis. Prevention of venous thromboembolism in cancer outpatients: guidance from the SSC of the ISTH. *J Thromb Haemost* 2014; **12**: 1928-1931 [PMID: 25208230 DOI: 10.1111/jth.12725]
- 24 **Gariani K,** Mavrakas T, Combescure C, Perrier A, Marti C. Is diabetes mellitus a risk factor for venous thromboembolism? A systematic review and meta-analysis of case-control and cohort studies. *Eur J Intern Med* 2016; **28**: 52-58 [PMID: 26507303 DOI: 10.1016/j.ejim.2015.10.001]
- 25 **Ferroni P,** Basili S, Falco A, Davi G. Platelet activation in type 2 diabetes mellitus. *J Thromb Haemost* 2004; **2**: 1282-1291 [PMID: 15304032 DOI: 10.1111/j.1538-7836.2004.00836.x]
- 26 **Lyman GH,** Bohlke K, Khorana AA, Kuderer NM, Lee AY, Arcelus JJ, Balaban EP, Clarke JM, Flowers CR, Francis CW, Gates LE, Kakkar AK, Key NS, Levine MN, Liebman HA, Tempero MA, Wong SL, Somerfield MR, Falanga A; American Society of Clinical Oncology. Venous thromboembolism prophylaxis and treatment in patients with cancer: american society of clinical oncology clinical practice guideline update 2014. *J Clin Oncol* 2015; **33**: 654-656 [PMID: 25605844 DOI: 10.1200/JCO.2014.59.7351]
- 27 **Mansfield AS,** Tafur AJ, Wang CE, Kourelis TV, Wysokinska EM, Yang P. Predictors of active cancer thromboembolic outcomes: validation of the Khorana score among patients with lung cancer. *J Thromb Haemost* 2016; **14**: 1773-1778 [PMID: 27273134 DOI: 10.1111/jth.13378]
- 28 **Srikanthan A,** Tran B, Beausoleil M, Jewett MA, Hamilton RJ, Sturgeon JF, O'Malley M, Anson-Cartwright L, Chung PW, Warde PR, Winkquist E, Moore MJ, Amir E, Bedard PL. Large retroperitoneal lymphadenopathy as a predictor of venous thromboembolism in patients with disseminated germ cell tumors treated with chemotherapy. *J Clin Oncol* 2015; **33**: 582-587 [PMID: 25605848 DOI: 10.1200/JCO.2014.58.6537]
- 29 **van Es N,** Franke VF, Middeldorp S, Wilmsink JW, Büller HR. The Khorana score for the prediction of venous thromboembolism in patients with pancreatic cancer. *Thromb Res* 2017; **150**: 30-32 [PMID: 28002757 DOI: 10.1016/j.thromres.2016.12.013]
- 30 **Ferroni P,** Zanzotto FM, Scarpato N, Riondino S, Nanni U, Roselli M, Guadagni F. Risk Assessment for Venous Thromboembolism in Chemotherapy-Treated Ambulatory Cancer Patients. *Med Decis Making* 2017; **37**: 234-242 [PMID: 27491558 DOI: 10.1177/0272989X16662654]

**P- Reviewer:** Wiewiora M **S- Editor:** Gong ZM **L- Editor:** A  
**E- Editor:** Zhang FF





Published by **Baishideng Publishing Group Inc**  
7901 Stoneridge Drive, Suite 501, Pleasanton, CA 94588, USA  
Telephone: +1-925-223-8242  
Fax: +1-925-223-8243  
E-mail: [bpgoffice@wjgnet.com](mailto:bpgoffice@wjgnet.com)  
Help Desk: <http://www.f6publishing.com/helpdesk>  
<http://www.wjgnet.com>



ISSN 1007-9327

