

# World Journal of *Gastroenterology*

*World J Gastroenterol* 2017 June 14; 23(22): 3945-4134



**EDITORIAL**

- 3945** Bleeding with the artificial heart: Gastrointestinal hemorrhage in CF-LVAD patients

*Gurvits GE, Fradkov E*

**REVIEW**

- 3954** Role of non-steroidal anti-inflammatory drugs on intestinal permeability and nonalcoholic fatty liver disease

*Utzeri E, Usai P*

- 3964** Molecular mimicry in *Helicobacter pylori* infections

*Chmiela M, Gonciarz W*

- 3978** Gallbladder cancer epidemiology, pathogenesis and molecular genetics: Recent update

*Sharma A, Sharma KL, Gupta A, Yadav A, Kumar A*

**ORIGINAL ARTICLE****Basic Study**

- 3999** Serelaxin increases the antifibrotic action of rosiglitazone in a model of hepatic fibrosis

*Bennett RG, Simpson RL, Hamel FG*

- 4007** Bcl-2 degradation is an additional pro-apoptotic effect of polo-like kinase inhibition in cholangiocarcinoma cells

*Sydor S, Jafoui S, Wingerter L, Swoboda S, Mertens JC, Gerken G, Canbay A, Paul A, Fingas CD*

- 4016** Effect of *CXCR3/HO-1* genes modified bone marrow mesenchymal stem cells on small bowel transplant rejection

*Yin ML, Song HL, Yang Y, Zheng WP, Liu T, Shen ZY*

**Case Control Study**

- 4039** Systemic interleukin-9 in inflammatory bowel disease: Association with mucosal healing in ulcerative colitis

*Matusiewicz M, Neubauer K, Bednars-Misa I, Gorska S, Krzystek-Korpacka M*

- 4047** Association of keratin 8/18 variants with non-alcoholic fatty liver disease and insulin resistance in Chinese patients: A case-control study

*Li R, Liao XH, Ye JZ, Li MR, Wu YQ, Hu X, Zhong BH*

### Retrospective Study

- 4054** Barcelona Clinic Liver Cancer outperforms Hong Kong Liver Cancer staging of hepatocellular carcinoma in multiethnic Asians: Real-world perspective

*Li JW, Goh BBG, Chang PE, Tan CK*

### Observational Study

- 4064** Single-operator cholangioscopy for biliary complications in liver transplant recipients

*Hüsing-Kabar A, Heinzow HS, Schmidt HHJ, Stenger C, Gerth HU, Pohlen M, Thölking G, Wilms C, Kabar I*

- 4072** Efficacy and safety of combined directly acting antivirals for treatment of Chinese chronic hepatitis C patients in a real-world setting

*Chen JH, Zeng Z, Zhang XX, Zhang Y, Zhang RW, Wang S, Wu CH, Yu M, Liu D, Xi HL, Zhou YX, An YY, Xu XY*

- 4080** Observation of the effect of targeted therapy of 64-slice spiral CT combined with cryoablation for liver cancer

*Yan QH, Xu DG, Shen YF, Yuan DL, Bao JH, Li HB, Lv YG*

### Prospective Study

- 4090** Inflammatory bowel disease incidence in Czech children: A regional prospective study, 2000-2015

*Schwarz J, Šýkora J, Cvalínová D, Pomahačová R, Klečková J, Kryl M, Včelák P*

- 4102** Drug-induced liver injury in inflammatory bowel disease: 1-year prospective observational study

*Koller T, Galambosova M, Filakovska S, Kubincova M, Hlavaty T, Toth J, Krajcovicova A, Payer J*

### SYSTEMATIC REVIEWS

- 4112** Can fecal microbiota transplantation cure irritable bowel syndrome?

*Halkjær SI, Boelsen AW, Günther S, Christensen AH, Petersen AM*

### CASE REPORT

- 4121** Application of novel magnified single balloon enteroscopy for a patient with Cronkhite-Canada syndrome

*Murata M, Bamba S, Takahashi K, Imaeda H, Nishida A, Inatomi O, Tsujikawa T, Kushima R, Sugimoto M, Andoh A*

- 4127** Synchronous triple occurrence of MALT lymphoma, schwannoma, and adenocarcinoma of the stomach

*Choi KW, Joo M, Kim HS, Lee WY*

### LETTERS TO THE EDITOR

- 4132** Is tremor related to celiac disease?

*Ameghino L, Rossi MD, Cerquetti D, Merello M*

## ABOUT COVER

Editorial board member of *World Journal of Gastroenterology*, Jun-Te Hsu, MD, Associate Professor, Surgeon, Surgical Oncologist, Department of Surgery, Chang Gung Memorial Hospital, Taoyuan County and Chang Gung Medicine Colledge, Tao Yuan 333, Taiwan

## AIMS AND SCOPE

*World Journal of Gastroenterology* (*World J Gastroenterol*, *WJG*, print ISSN 1007-9327, online ISSN 2219-2840, DOI: 10.3748) is a peer-reviewed open access journal. *WJG* was established on October 1, 1995. It is published weekly on the 7<sup>th</sup>, 14<sup>th</sup>, 21<sup>st</sup>, and 28<sup>th</sup> each month. The *WJG* Editorial Board consists of 1375 experts in gastroenterology and hepatology from 68 countries.

The primary task of *WJG* is to rapidly publish high-quality original articles, reviews, and commentaries in the fields of gastroenterology, hepatology, gastrointestinal endoscopy, gastrointestinal surgery, hepatobiliary surgery, gastrointestinal oncology, gastrointestinal radiation oncology, gastrointestinal imaging, gastrointestinal interventional therapy, gastrointestinal infectious diseases, gastrointestinal pharmacology, gastrointestinal pathophysiology, gastrointestinal pathology, evidence-based medicine in gastroenterology, pancreatology, gastrointestinal laboratory medicine, gastrointestinal molecular biology, gastrointestinal immunology, gastrointestinal microbiology, gastrointestinal genetics, gastrointestinal translational medicine, gastrointestinal diagnostics, and gastrointestinal therapeutics. *WJG* is dedicated to become an influential and prestigious journal in gastroenterology and hepatology, to promote the development of above disciplines, and to improve the diagnostic and therapeutic skill and expertise of clinicians.

## INDEXING/ABSTRACTING

*World Journal of Gastroenterology* (*WJG*) is now indexed in Current Contents<sup>®</sup>/Clinical Medicine, Science Citation Index Expanded (also known as SciSearch<sup>®</sup>), Journal Citation Reports<sup>®</sup>, Index Medicus, MEDLINE, PubMed, PubMed Central, Digital Object Identifier, and Directory of Open Access Journals. The 2015 edition of Journal Citation Reports<sup>®</sup> released by Thomson Reuters (ISI) cites the 2015 impact factor for *WJG* as 2.787 (5-year impact factor: 2.848), ranking *WJG* as 38 among 78 journals in gastroenterology and hepatology (quartile in category Q2).

## FLYLEAF

### I-IX Editorial Board

## EDITORS FOR THIS ISSUE

Responsible Assistant Editor: *Xiang Li*  
Responsible Electronic Editor: *Cai-Hong Wang*  
Proofing Editor-in-Chief: *Lian-Sheng Ma*

Responsible Science Editor: *Yuan Qi*  
Proofing Editorial Office Director: *Jin-Lei Wang*

NAME OF JOURNAL  
*World Journal of Gastroenterology*

ISSN  
ISSN 1007-9327 (print)  
ISSN 2219-2840 (online)

LAUNCH DATE  
October 1, 1995

FREQUENCY  
Weekly

EDITORS-IN-CHIEF  
**Damian Garcia-Olmo, MD, PhD, Doctor, Professor, Surgeon**, Department of Surgery, Universidad Autonoma de Madrid; Department of General Surgery, Fundacion Jimenez Diaz University Hospital, Madrid 28040, Spain

**Stephen C Strom, PhD, Professor**, Department of Laboratory Medicine, Division of Pathology, Karolinska Institutet, Stockholm 141-86, Sweden

**Andrzej S Tarnawski, MD, PhD, DSc (Med), Professor of Medicine, Chief Gastroenterology**, VA Long Beach Health Care System, University of California, Irvine, CA, 5901 E. Seventh Str., Long Beach,

CA 90822, United States

EDITORIAL BOARD MEMBERS  
All editorial board members resources online at <http://www.wjgnet.com/1007-9327/editorialboard.htm>

EDITORIAL OFFICE  
Jin-Lei Wang, Director  
Yuan Qi, Vice Director  
Ze-Mao Gong, Vice Director  
*World Journal of Gastroenterology*  
Baishideng Publishing Group Inc  
7901 Stoneridge Drive, Suite 501,  
Pleasanton, CA 94588, USA  
Telephone: +1-925-2238242  
Fax: +1-925-2238243  
E-mail: [editorialoffice@wjgnet.com](mailto:editorialoffice@wjgnet.com)  
Help Desk: <http://www.f6publishing.com/helpdesk>  
<http://www.wjgnet.com>

PUBLISHER  
Baishideng Publishing Group Inc  
7901 Stoneridge Drive, Suite 501,  
Pleasanton, CA 94588, USA  
Telephone: +1-925-2238242  
Fax: +1-925-2238243  
E-mail: [bpgoffice@wjgnet.com](mailto:bpgoffice@wjgnet.com)  
Help Desk: <http://www.f6publishing.com/helpdesk>

<http://www.wjgnet.com>

PUBLICATION DATE  
June 14, 2017

COPYRIGHT  
© 2017 Baishideng Publishing Group Inc. Articles published by this Open-Access journal are distributed under the terms of the Creative Commons Attribution Non-commercial License, which permits use, distribution, and reproduction in any medium, provided the original work is properly cited, the use is non commercial and is otherwise in compliance with the license.

SPECIAL STATEMENT  
All articles published in journals owned by the Baishideng Publishing Group (BPG) represent the views and opinions of their authors, and not the views, opinions or policies of the BPG, except where otherwise explicitly indicated.

INSTRUCTIONS TO AUTHORS  
Full instructions are available online at <http://www.wjgnet.com/bpg/gerinfo/204>

ONLINE SUBMISSION  
<http://www.f6publishing.com>

## Observational Study

# Single-operator cholangioscopy for biliary complications in liver transplant recipients

Anna Hüsing-Kabar, Hauke Sebastian Heinzow, Hartmut Hans-Jürgen Schmidt, Carina Stenger, Hans Ulrich Gerth, Michele Pohlen, Gerold Thölking, Christian Wilms, Iyad Kabar

Anna Hüsing-Kabar, Hauke Sebastian Heinzow, Hartmut Hans-Jürgen Schmidt, Carina Stenger, Christian Wilms, Iyad Kabar, Department of Transplant Medicine, University Hospital Muenster, 48149 Muenster, Germany

Hans Ulrich Gerth, Gerold Thölking, Department of Medicine D, Division of General Internal Medicine, Nephrology and Rheumatology, University Hospital Muenster, 48149 Muenster, Germany

Michele Pohlen, Department of Medicine A, Hematology and Oncology, University Hospital Muenster, 48149 Muenster, Germany

**Author contributions:** Hüsing-Kabar A, Heinzow HS and Kabar I designed the study; Hüsing-Kabar A, Heinzow HS and Kabar I performed the study; Hüsing-Kabar A, Heinzow HS, Stenger C, Wilms C and Kabar I collected the patients' data; Hüsing-Kabar A, Heinzow HS, Schmidt HHJ, Stenger C, Gerth HU, Pohlen M, Thölking G, Wilms C and Kabar I analyzed the data; Hüsing-Kabar A, Heinzow HS, Schmidt HHJ, Gerth HU, Pohlen M, Thölking G and Kabar I wrote the manuscript; Hüsing-Kabar A and Heinzow HS contributed equally to this work and are co-first-authors.

**Supported by** Hüsing-Kabar A from the Dean's Office of the Medical Faculty of the Westfälische-Wilhelms-University of Muenster.

**Institutional review board statement:** This observational study was approved by the Institution Review Board.

**Informed consent statement:** All patients gave written informed consent prior to intervention.

**Conflict-of-interest statement:** Hüsing-Kabar A received funding from the Dean's Office of the Medical Faculty of the Westfälische-Wilhelms-University of Muenster. None of the other authors have conflicts of interest related to the subject of this manuscript.

**Data sharing statement:** No additional data are available.

**Open-Access:** This article is an open-access article which was selected by an in-house editor and fully peer-reviewed by external reviewers. It is distributed in accordance with the Creative Commons Attribution Non Commercial (CC BY-NC 4.0) license, which permits others to distribute, remix, adapt, build upon this work non-commercially, and license their derivative works on different terms, provided the original work is properly cited and the use is non-commercial. See: <http://creativecommons.org/licenses/by-nc/4.0/>

**Manuscript source:** Unsolicited manuscript

**Correspondence to:** Iyad Kabar, MD, Department of Transplant Medicine, University Hospital Muenster, Albert-Schweitzer-Campus 1, Gebäude A14, 48149 Muenster, Germany. [iyad.kabar@ukmuenster.de](mailto:iyad.kabar@ukmuenster.de)  
**Telephone:** +49-251-8344957  
**Fax:** +49-251-8357771

**Received:** February 13, 2017

**Peer-review started:** February 14, 2017

**First decision:** March 3, 2017

**Revised:** March 20, 2017

**Accepted:** April 21, 2017

**Article in press:** April 21, 2017

**Published online:** June 14, 2017

## Abstract

### AIM

To evaluate cholangioscopy in addition to endoscopic retrograde cholangiopancreatography (ERCP) for management of biliary complications after liver transplantation (LT).

### METHODS

Twenty-six LT recipients with duct-to-duct biliary reconstruction who underwent ERCP for suspected biliary complications between April and December

2016 at the university hospital of Muenster were consecutively enrolled in this observational study. After evaluating bile ducts using fluoroscopy, cholangioscopy using a modern digital single-operator cholangioscopy system (SpyGlass DS™) was performed during the same procedure with patients under conscious sedation. All patients received peri-interventional antibiotic prophylaxis and bile was collected during the intervention for microbial analysis and for antibiotic susceptibility testing.

## RESULTS

Thirty-three biliary complications were found in a total of 22 patients, whereas four patients showed normal bile ducts. Anastomotic strictures were evident in 14 (53.8%) patients, non-anastomotic strictures in seven (26.9%), biliary cast in three (11.5%), and stones in six (23.1%). A benefit of cholangioscopy was seen in 12 (46.2%) patients. In four of them, cholangioscopy was crucial for selective guidewire placement prior to planned intervention. In six patients, biliary cast and/or stones failed to be diagnosed by ERCP and were only detectable through cholangioscopy. In one case, a bile duct ulcer due to fungal infection was diagnosed by cholangioscopy. In another case, signs of bile duct inflammation caused by acute cholangitis were evident. One patient developed post-interventional cholangitis. No further procedure-related complications occurred. Thirty-seven isolates were found in bile. Sixteen of these were gram-positive (43.2%), 12 (32.4%) were gram-negative bacteria, and *Candida* species accounted for 24.3% of all isolated microorganisms. Interestingly, only 48.6% of specimens were sensitive to prophylactic antibiotics.

## CONCLUSION

Single-operator cholangioscopy can provide important diagnostic information, helping endoscopists to plan and perform interventional procedures in LT-related biliary complications.

**Key words:** Cholangioscopy; Endoscopic retrograde cholangiopancreatography; Liver transplantation; Biliary complications; Biliary strictures

© The Author(s) 2017. Published by Baishideng Publishing Group Inc. All rights reserved.

**Core tip:** Biliary complications represent a leading cause of morbidity and mortality in liver transplant recipients. To date, endoscopic retrograde cholangiopancreatography still remains the gold standard for diagnosing and treating such complications. The present study examined the benefit of complementary single-operator cholangioscopy. Our results are encouraging and demonstrate strong evidence for a diagnostic and therapeutic advantage of additional cholangioscopy for management of biliary disorders following liver transplantation.

Hüsing-Kabar A, Heinzow HS, Schmidt HHJ, Stenger C, Gerth HU, Pohlen M, Thölking G, Wilms C, Kabar I. Single-operator cholangioscopy for biliary complications in liver transplant recipients. *World J Gastroenterol* 2017; 23(22): 4064-4071 Available from: URL: <http://www.wjgnet.com/1007-9327/full/v23/i22/4064.htm> DOI: <http://dx.doi.org/10.3748/wjg.v23.i22.4064>

## INTRODUCTION

Over the last few decades, the long-term outcome, morbidity, and mortality of liver transplant (LT) recipients have markedly improved because of advances in surgical techniques, modern immunosuppressive medication, and close follow-up. However, biliary complications after LT are still common<sup>[1,2]</sup>. Biliary complications affect 10%-25% of adult LT recipients<sup>[3-5]</sup>. In the majority of cases, patients present with biliary leakage and bile duct strictures. The latter can be subdivided into anastomotic and non-anastomotic strictures<sup>[6]</sup>, with anastomotic strictures responding well to endoscopic treatment<sup>[3,7]</sup>. Additional biliary complications are biliary stones, cast, and sludge. Because of several disadvantages of first generation direct peroral cholangioscopy (*e.g.*, high costs, fragility, and the prerequisite of two experienced endoscopists), introduction of this technique in 1976 initially failed to gain widespread acceptance. However, currently, cholangioscopy has become an established modality in diagnosing and treating pancreaticobiliary diseases<sup>[8,9]</sup>. In 2007, the digital single-operator per oral cholangioscopy system SpyGlass™ (Boston Scientific Corp., Natick, MA, United States) was introduced. This system featured crucial improvements in visualization and technical tools, leading to revived interest in the field of cholangioscopy for diagnosis and management of biliary disorders<sup>[10,11]</sup>. In 2015, high-resolution cholangioscopy (SpyGlass DS™) was introduced by Boston Scientific (Boston Scientific Corp.), enabling high-definition imaging of bile ducts. The wide range of potential indications and therapeutic procedures for SpyGlass DS, such as diagnosis of indeterminate biliary strictures, lithotripsy of bile duct stones, ablative techniques for intraductal malignancies, removal of foreign bodies, and gallbladder drainage, have led to more widespread use of this procedure. A study by Chen *et al.*<sup>[12]</sup> showed that single-operator cholangioscopy using SpyGlass was feasible and safe for diagnosis and therapy of biliary disorders. Because of the possibility of direct high-resolution imaging of bile ducts, single-operator cholangioscopy has recently attracted attention in the field of management of biliary complications after LT<sup>[13]</sup>. However, only a few case reports and small case series have analyzed the role of single-operator cholangioscopy for management

of biliary complications after LT<sup>[14-16]</sup>. Moreover, most of these case series were performed using the earlier generation of the SpyGlass system. To the best of our knowledge, data on the effect of cholangioscopy using the high-resolution SpyGlass DS system on management of biliary complications in LT recipients are still unavailable.

Therefore, this study aimed to examine the role of complementary single-operator cholangioscopy using the SpyGlass DS system during endoscopic retrograde cholangiopancreatography (ERCP) for management of biliary complications following LT.

## MATERIALS AND METHODS

This prospective, observational study was performed at the University Hospital Muenster, Germany. The study was performed in accordance with the guidelines of the Declaration of Helsinki and was approved by the local ethics committee. All patients gave prior written informed consent. Patients with LT and duct-to-duct biliary anastomosis who presented with clinical or biochemical signs of biliary complications, and/or suspected biliary complications based upon imaging and/or histology between April and December 2016 were consecutively included in the study. Initial imaging included transabdominal Ultrasound in all cases. In case of inconclusive findings on transabdominal ultrasound and absence of clinical evident cholangitis, additional endoscopic ultrasound was performed followed by ERCP in case of documented biliary tract alterations. During the procedures, patients received conscious sedation using propofol and piritramide with or without midazolam. All of the patients first received ERCP followed by cholangioscopy during the same procedure. ERCP was performed using a large-diameter channel duodenoscope (TJF-180V, Olympus Corp., Tokyo, Japan). Intubation of the bile duct was guidewire-assisted (0.025 inches, VisiGlide™, Olympus Corp.) using either a catheter (StarTip2V™, Olympus Corp.) or a sphincterotome (CleverCut2V™, Olympus Corp.). If necessary, biliary sphincterotomy was performed.

Cholangioscopy was carried out using a single-operator cholangioscopy device (SpyGlass DS; Boston Scientific Corp.) that was pushed along the guidewire through the working channel of the duodenoscope into the bile duct. The guidewire was then removed and cholangioscopy was continued under visual guidance. A biopsy was performed in case of unclear bile duct mucosal lesions. After the intervention, patients remained at least 3 d in hospital.

The interventions were performed by two investigators rated as highly experienced with a case volume above 200 endoscopic biliary interventions/year. Procedure related complications were evaluated according to the ASGE guidelines<sup>[17]</sup>.

### *Peri-interventional antibiotics*

Standard antibiotic prophylaxis included intravenous piperacillin/tazobactam at least 2 h before the procedure, and up to 3 d thereafter. During ERCP/ cholangioscopy, bile was collected for microbial analysis and for antibiotic susceptibility testing.

### *Immunosuppression*

All of the patients were maintained on a calcineurin inhibitor only or in combination with either an m-TOR-inhibitor or mycophenolate mofetil.

### *Interpretation of ERCP findings*

Strictures were determined as an abrupt narrowing of the bile duct with delayed outflow of contrast media through the stricture. Bile strictures were fluoroscopically subdivided into anastomotic strictures at the site of biliary anastomosis and non-anastomotic strictures affecting donor bile ducts that were proximal to the biliary anastomosis. Bile duct stones and biliary cast were evident as intraluminal filling defects of contrast media.

### *Interpretation of cholangioscopy findings*

Strictures were determined as above and were visible as an abrupt substantial narrowing of bile ducts compared with distal and proximal segments of the bile duct. Biliary cast was determined as dark smooth foreign bodies mostly adhering to the bile wall, whereas stones were determined as free-moving, hard, foreign bodies in the bile duct.

### *Statistical analysis*

Statistical analysis was conducted using SPSS 24 (SPSS Inc., Chicago, IL, United States). All data are presented as absolute and relative frequencies and reported as median (minimal-maximal) values. Categorical variables were compared using Fisher's exact test. *P* values ≤ 0.05 were considered statistically significant.

## RESULTS

Over the period covered by our study, 26 consecutive patients underwent ERCP followed by cholangioscopy. Their median age was 54.5 years (25-75 years), and 14 (53.8%) patients were women. Procedures were carried out after a median of 18.5 mo (1-159 mo) after LT. The patients' clinical and demographic data, their primary underlying disease, as well as the findings of ERCP and cholangioscopy, are shown in Table 1.

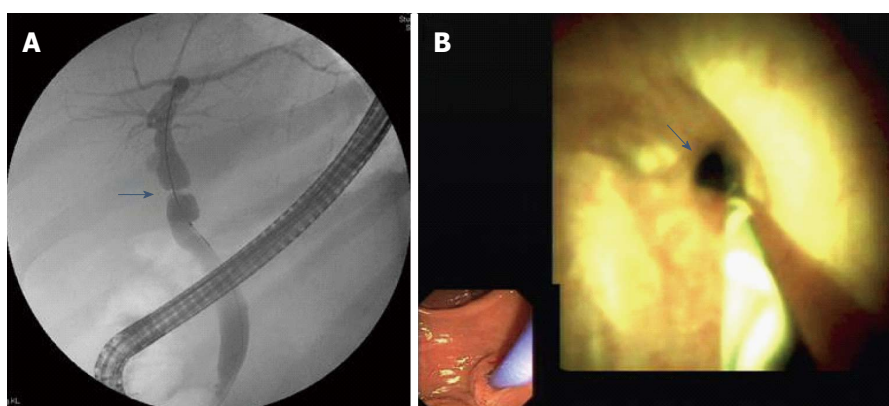
A total of 33 biliary tract complications were diagnosed in 22 patients. Anastomotic strictures were observed in 14 (53.8%) patients, non-anastomotic strictures in seven (26.9%), biliary cast in three (11.5%), and stones in six (23.1%).

In four patients, no bile tree abnormalities were

**Table 1 Patients' characteristics and findings of endoscopic retrograde cholangiopancreatography/SpyGlass DS**

Patient no.	Age (yr)	Sex	Indication for LT	Findings of ERCP	Findings of cholangioscopy	Endoscopic Intervention
1	64	M	Caroli syndrome	AS, non-AS	AS, non-AS	Stent insertion
2	65	M	Cryptogenic liver cirrhosis	AS	AS	Balloon dilation
3	28	M	Cryptogenic liver cirrhosis	AS, non-AS	AS, non-AS	Balloon dilation
4	48	M	Transplant dysfunction	Normal	Bile duct erythema	None
5	30	M	Alcoholic liver cirrhosis	AS, non-AS	AS, non-AS	Balloon dilation
6	63	M	Hepatocellular carcinoma, alcoholic liver cirrhosis	Normal	Normal	None
7	56	F	Alcoholic liver cirrhosis	AS	AS	Balloon dilation
8	48	F	Autoimmune hepatitis and primary sclerosing cholangitis	Non-AS	Non-AS	Balloon dilation
9	46	M	Acute liver failure	Stones	Stones	Extraction of stones
10	70	M	Hepatocellular carcinoma/hepatitis C	AS	AS, stones	Balloon dilation, extraction of stones
11	75	F	Autoimmune hepatitis and primary biliary cholangitis	AS	AS, stones	Extraction of stones, stent insertion
12	51	F	Cryptogenic liver cirrhosis	AS, non-AS	AS, non-AS	Balloon dilation, bougienage of stricture
13	57	M	Alcoholic liver cirrhosis	AS	AS	Balloon dilation
14	30	F	Transplant dysfunction after LT for Wilson disease	AS, stones	AS, stones	Balloon dilation, extraction of stones
15	60	F	Drug-induced liver injury	None	None	None
16	57	F	Hepatitis C	Stones	Stones	Extraction of stones
17	52	F	Hepatocellular carcinoma/hepatitis B	None	None	None
18	44	F	Acute liver failure	AS	AS	Balloon dilation
19	60	M	Alcoholic liver cirrhosis	AS, non-AS	AS, non-AS, biliary cast	Balloon dilation, extraction of cast
20	53	F	Alcoholic liver cirrhosis	Non-AS	Non-AS, biliary cast	Extraction of cast
21	25	F	Acute liver failure	None	None	None
22	63	M	Non-alcoholic steato-hepatitis	AS	AS	Balloon dilation
23	37	M	Hepatitis C/Wilson disease	AS	AS, stones	Balloon dilation, extraction of stones
24	63	F	Non-alcoholic steato-hepatitis	None	Hiliar ulcer	None
25	66	F	Primary biliary cholangitis	None	Biliary cast	Extraction of cast
26	34	F	FAP	Bile duct kinking	Bile duct kinking	Stent insertion

AS: Anastomotic stricture; non-AS: Non-anastomotic stricture; ERCP: Endoscopic retrograde cholangiopancreatography; FAP: Familial amyloid polyneuropathy; LT: Liver transplant.



**Figure 1** Anastomotic stricture (arrows) as shown by fluoroscopy (A) and a corresponding cholangiographic image (B) showing high-grade fibrotic stenosis that initially could not be passed by the cholangioscope.

detected. Final diagnoses were confirmed by clinical follow-up, further liver biopsies, and biochemical tests. In these cases, graft rejection, drug-induced liver injury, and infections were the causative disorders.

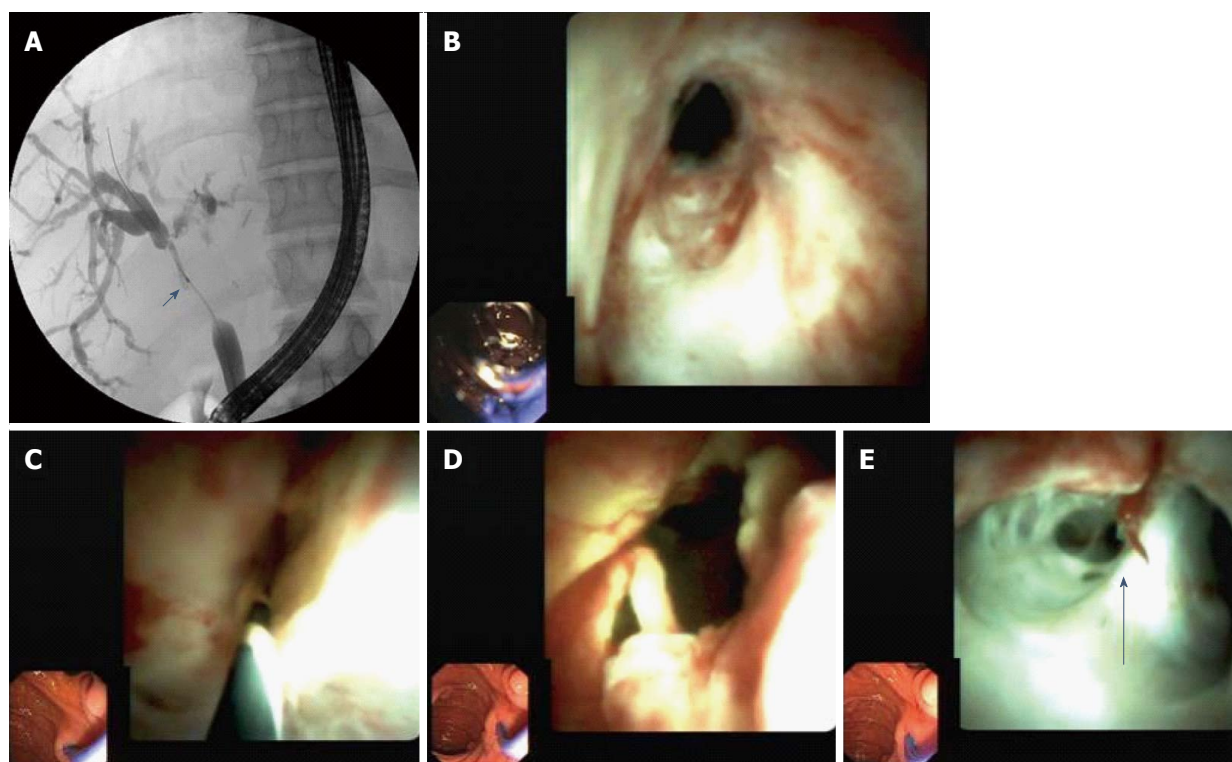
### Findings of ERCP

During ERCP, anastomotic strictures were observed in

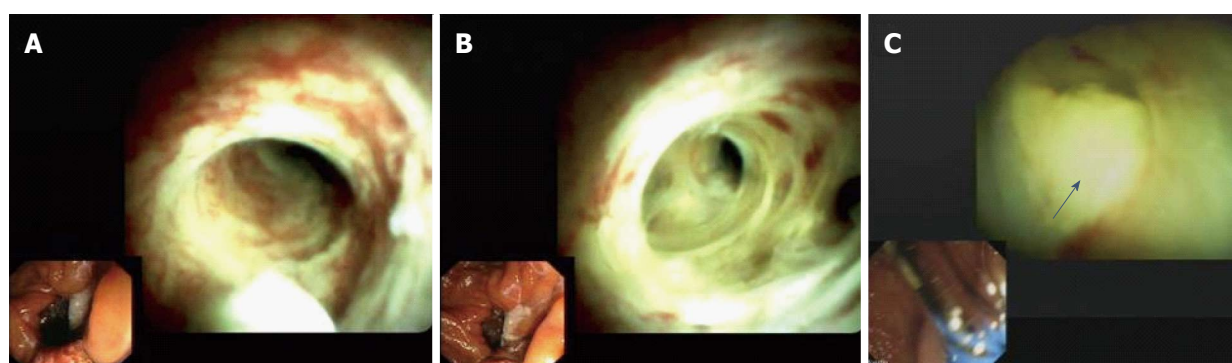
14 patients, non-anastomotic in seven, and stones in three. One patient showed bile duct kinking. In seven patients, ERCP showed no pathological results.

### Findings of cholangioscopy

Cholangioscopy showed anastomotic strictures in 14 patients (Figure 1), non-anastomotic strictures in



**Figure 2 Non-anastomotic strictures in seven.** A: High-grade, long-segment stenosis of the main bile duct between biliary anastomosis and the hilus region. The biliary hilus appears to be involved in the stenosis; B: Cholangioscopic image of biliary anastomosis with slight stenosis; C: High-grade stricture of the bile duct beyond the biliary stricture that could not be passed using a cholangioscope; D: Bile duct above the biliary anastomosis after balloon dilation with marked erythema and polypoid growth of the bile duct wall, and signs of pronounced inflammation; E: Bile duct at the height of the hilus (arrow) with inflammation involving the left hepatic bile duct (right side of the image).



**Figure 3 Bile duct hyperemia of intrahepatic bile ducts.** A and B: Marked bile duct erythema caused by cholangitis; C: White plaque-coated bile duct ulcer.

seven (Figure 2), biliary cast in three, and stones in six. All cases of non-anastomotic strictures showed a fibrotic obstruction and signs of inflammation, such as hyperemia, erosions, and polyp-like tissue growth. In one case, a fungal ulcer confirmed by microbiology was detected. In another case, bile duct hyperemia of intrahepatic bile ducts was found (Figure 3).

#### Comparison between ERCP and cholangioscopy

Benefits of cholangioscopy over ERCP were found in 12 of 26 (46.2%) patients. In four cases of failed cannulation of biliary strictures during ERCP, selective guidewire placement was successful by cholangioscopy

under direct vision. Furthermore, cholangioscopy was superior to ERCP for detecting stones in three patients ( $P < 0.008$ ) and cast in three patients ( $P < 0.001$ ) that ERCP failed to detect in these patients. In one patient, a fungal bile duct ulcer that was confirmed by microbiology (candidiasis) was detected, and this resulted in targeted antifungal therapy. In another patient, strong hyperemia of intrahepatic bile ducts due to acute cholangitis was observed.

#### Histological findings

A total of 11 biopsies were obtained. Histological samples showed fibrotic shrinkage without inflammation

**Table 2** Species found in bile

Microorganism	Frequency	Percentage
<i>Stenotrophomonas</i>	1	2.7%
<i>Enterococcus faecium</i>	7	18.9%
<i>Escherichia coli</i>	5	13.5%
<i>Streptococcus viridans</i>	2	5.4%
<i>Micrococcus luteus</i>	1	2.7%
<i>Enterococcus faecalis</i>	2	5.4%
<i>Klebsiella oxytoca</i>	2	5.4%
<i>Enterobacter cloacae</i>	2	5.4%
<i>Raultella ornithinolytica</i>	1	2.7%
<i>Enterobacter aerogenes</i>	1	2.7%
<i>Staphylococcus haemolyticus</i>	1	2.7%
<i>Pedococcus pentosaceus</i>	1	2.7%
<i>Enterococcus avium</i>	2	5.4%
<i>Candida albicans</i>	6	16.2%
<i>Candida dubliniensis</i>	1	2.7%
<i>Candida tropicalis</i>	1	2.7%
<i>Candida glabrata</i>	1	2.7%
Total	37	100%

in case of anastomotic strictures. In a patient with non-anastomotic strictures, signs of acute and chronic inflammation with mixed infiltration of lymphocytes, plasmacytes, and granulocytes, as well as granulation tissue and scars, were observed. In a patient with hyperemia, inflammation with predominantly granulocytes was observed. In this patient, bacterial cholangitis was confirmed by the clinical course and microbiologically.

### Endoscopic treatment

In patients with biliary complications, a total of 13 balloon dilatations, six extractions of stones, three stent insertions, one bougienage of a tight stricture, and three extractions of biliary cast were performed. Only one procedure-related complication (cholangitis) occurred and was managed antibioticly.

### Microbial analysis of bile

Bile was collected from 23 patients. In seven (30.4%) patients, the bile showed no microbial growth. In 16 (69.6%) patients, bacteria and/or fungi were detected. In nine (39.1%) patients, *Candida* species were observed (*Candida albicans* in six cases, and *C. dubliniensis*, *C. glabrata*, and *C. tropicalis* in one patient each).

A total of 37 microorganisms were isolated from the bile. Of these, 16 were gram-positive (43.2%), whereas 12 (32.4%) were gram-negative bacteria. *Candida* species accounted for 24.3% of all isolates. The microorganisms that were found in bile are listed in Table 2.

In patients with evidence of bile colonization, standard antibiotic prophylaxis using piperacillin/tazobactam was effective in only 48.6% of all isolates. Susceptibility testing for ciprofloxacin showed that 36.1% of isolates were sensitive, whereas 58.3% were resistant and 5.6% were intermediate susceptible. For

ceftriaxone, 70.3% of microorganisms were resistant and 29.7% were sensitive. Among all specimens, 54.1% were sensitive to carbapenems. For gentamicin, 32.4% were resistant, 55.6% were sensitive, and 11.1% were intermediate susceptible to this antibiotic. For vancomycin, 87.5% of the tested gram-positive bacteria were sensitive. For tigecycline, 62.5% of all tested specimens were also sensitive.

Of all fungal isolates, eight were sensitive to triazoles, while one was intermediate susceptible. All isolated *Candida* species were susceptible to amphotericin B and echinocandins.

## DISCUSSION

Despite improvements in surgical techniques, biliary complications are common and still considered the "Achilles heel" of LT<sup>[18,19]</sup>. To date, ERCP represents the gold standard for diagnosis and treatment of biliary complications after LT<sup>[20,21]</sup>. However, increasing evidence is currently emerging of the major benefits of using cholangioscopy in management of these biliary disorders.

In our study, an advantage of cholangioscopy over ERCP was observed in 12 of 26 (46.2%) patients. In one case series by Woo *et al.*<sup>[13]</sup> SpyGlass cholangioscopy showed a high performance in visualization of strictures, but a poor performance of cholangioscopy-assisted guidewire placement in 60% of cases. In contrast to these findings, we were able to selectively steer the guidewire over the stricture in every patient prior to planned treatment. An explanation of the poor success of guidewire placement in Woo *et al.*<sup>[13]</sup> study could be that their study was performed in patients after living donor LT, with special and sometimes complex anatomy of bile ducts. However, most of our patients underwent whole cadaveric LT prior to the procedure (only one patient in our cohort had a living donor LT). The use of the new generation of high-resolution cholangioscopy (SpyGlass DS<sup>TM</sup>) in our study may have provided an additional advantage.

In our study, cholangioscopy was superior to ERCP in detection of stones and biliary cast. Several previous studies showed that the sensitivity of ERCP in detecting bile duct stones ranged between 89% and 93%. Especially in cases of small stones and dilated bile ducts, false negative ERCP has been observed<sup>[22-24]</sup>. In a previous study at our center, we found that biliary cast appear to be underdiagnosed using ERCP only<sup>[21]</sup>. Biliary stones and cast can be masked by dense contrast media during ERCP. Furthermore, stones and cast in bile ducts may be easily misinterpreted as biliary air. In the present study, ERCP failed to identify biliary cast in three patients and biliary stones in a further three patients. In two of the three patients with failed diagnosis of cast, further biliary tract disorders were coincident. In one of these patients,

anastomotic stricture and multiple non-anastomotic strictures were found. In another of these patients, multiple non-anastomotic strictures were observed. These additional conditions could have made it even more difficult to identify biliary cast. In the third patient, biliary cast was detected only in the intra-hepatic bile ducts and was adhered to the bile duct wall without completely occluding the whole bile duct lumen. In all patients in whom ERCP failed to detect stones, anastomotic stricture was also present, and small stones were detected by cholangioscopy directly proximal to the anastomosis. This was most likely as a consequence of bile stasis caused by stenosis. The coincident anastomotic stricture and bile duct dilation could have masked the small stones in these special cases. One further advantage for cholangioscopy was found in patients in whom pathological changes in bile ducts (e.g., hyperemia and bile duct ulcers; Figure 1) were only detectable by direct visualization of bile duct walls, but not by fluoroscopy. In these special cases, there were therapeutic consequences. In the current study, ERCP was highly effective in detecting bile duct strictures. In these cases, cholangioscopy offered no further benefits.

In our study, additional histological information that was obtained by tissue samples of the bile duct was of minor clinical relevance. In the case of non-anastomotic strictures, fibrosis and inflammation were simultaneously evident in every patient. This finding supports the role of ongoing inflammation for the pathogenesis of non-anastomotic strictures. Our findings are consistent with the results of previous studies suggesting immunological aspects in the pathogenesis of non-anastomotic strictures<sup>[3,25]</sup>.

During endoscopic procedures, we obtained bile samples for microbial analysis in the majority of patients. Several studies have identified LT as a risk factor for increasing microbial colonization of bile. In these studies, an increased incidence of gram-positive bacteria with increasing antibiotic resistance, such as enterococci and *Candida* species, in patients with LT was found<sup>[26-29]</sup>. In our study, we found a remarkably high prevalence of *Candida* species (39.1%), whereas the prevalence of enterococci was 29.7%. In a minority of isolates (48.6%), specimens that were found in bile were sensitive to administered prophylactic antibiotics. These findings are important because microbial colonization of bile has been identified to be the origin of post-ERCP cholangitis and cholangiosepsis<sup>[26]</sup>. Even though microbial analysis was not the focus of the present study, these findings suggest that bile colonization during endoscopic interventions in the bile duct of LT recipients should be monitored. The resulting resistogram can be helpful in choosing effective antibiotics in case of endoscopy-related septic complications. Because of the high prevalence of enterococci and *Candida* species, empirical antimicrobial treatments should include

vancomycin/linezolid and an antifungal agent in case of post-procedural septic complications. Isolated *Candida* species showed no relevant resistance to common antifungal agents in our study. However, selection of an antibiotic regimen should always be based on local microbial resistance patterns.

In conclusion, high-resolution cholangioscopy using the SpyGlass DS system is safe and feasible in LT recipients with biliary complications, and offers useful diagnostic information in addition to ERCP. Cholangioscopy is superior to ERCP in diagnosing biliary cast and stones, and optimizes treatment in the patients concerned. Therefore, we recommend performing cholangioscopy in LT recipients who have negative ERCP results and suspected biliary complications.

Use of a general peri-interventional antibiotic prophylaxis in patients with LT based on the general increase in microbial resistance should be critically examined in future studies. Furthermore, microbial analysis of bile collected during bile duct interventions should be regularly performed to adapt anti-infective treatments in case of post-ERCP septic complications.

## ACKNOWLEDGMENTS

We also acknowledge the support of Deutsche Forschungsgemeinschaft and Open Access Publication Fund of University of Muenster.

## COMMENTS

### Background

Despite improvements in surgical techniques, biliary complications still remain common in liver transplant (LT) recipients influencing their morbidity and mortality. Nowadays, endoscopic retrograde cholangiopancreatography (ERCP) represents the gold standard for diagnosis and treatment of biliary complications following LT. Until now, data evaluating the utility and value of cholangioscopy for management of biliary disorders after LT are still lacking.

### Research frontiers

The present study explores the benefit of modern digital single-operator cholangioscopy (SpyGlass DS™) in addition to ERCP for the management of biliary complications after LT.

### Innovations and breakthroughs

The results of our study indicate that use of cholangioscopy provides valuable diagnostic information which is able to improve the management of biliary complications after LT.

### Applications

These data demonstrate that cholangioscopy is effective for selective guidewire placement in high-grade biliary strictures that failed to be cannulated using ERCP alone. Furthermore, cholangioscopy offers diagnostic superiority in comparison to ERCP in detecting biliary cast and stones and therefore should be used in LT recipients with clinical signs of biliary complications despite negative ERCP results.

### Terminology

Single-operator cholangioscopy is an innovative tool that enables high-resolution imaging of bile ducts.

## Peer-review

The manuscript is fine and well written. In addition the manuscript is useful for physician facing with post liver transplant complication clearly documenting the superiority of cholangioscopy with respect to ERCP. Interestingly the superiority is clearly documented for biliary stones, casts and unusual, but diverse finding as micotic ulcer.

## REFERENCES

- Duffy JP, Kao K, Ko CY, Farmer DG, McDiarmid SV, Hong JC, Venick RS, Feist S, Goldstein L, Saab S, Hiatt JR, Busuttill RW. Long-term patient outcome and quality of life after liver transplantation: analysis of 20-year survivors. *Ann Surg* 2010; **252**: 652-661 [PMID: 20881772 DOI: 10.1097/SLA.0b013e3181f5f23a]
- Graziadei IW, Schwaighofer H, Koch R, Nachbaur K, Koenigsgrainer A, Margreiter R, Vogel W. Long-term outcome of endoscopic treatment of biliary strictures after liver transplantation. *Liver Transpl* 2006; **12**: 718-725 [PMID: 16482553 DOI: 10.1002/lt.20644]
- Williams ED, Draganov PV. Endoscopic management of biliary strictures after liver transplantation. *World J Gastroenterol* 2009; **15**: 3725-3733 [PMID: 19673012 DOI: 10.3748/wjg.15.3725]
- Ryu CH, Lee SK. Biliary strictures after liver transplantation. *Gut Liver* 2011; **5**: 133-142 [PMID: 21814591 DOI: 10.5009/gnl.2011.5.2.133]
- Pascher A, Neuhaus P. Bile duct complications after liver transplantation. *Transpl Int* 2005; **18**: 627-642 [PMID: 15910286 DOI: 10.1111/j.1432-2277.2005.00123.x]
- Sharma S, Gurakar A, Jabbour N. Biliary strictures following liver transplantation: past, present and preventive strategies. *Liver Transpl* 2008; **14**: 759-769 [PMID: 18508368 DOI: 10.1002/lt.21509]
- Kao D, Zepeda-Gomez S, Tandon P, Bain VG. Managing the post-liver transplantation anastomotic biliary stricture: multiple plastic versus metal stents: a systematic review. *Gastrointest Endosc* 2013; **77**: 679-691 [PMID: 23473000 DOI: 10.1016/j.gie.2013.01.015]
- Erim T, Shiroky J, Pleskow DK. Cholangioscopy: the biliary tree never looked so good! *Curr Opin Gastroenterol* 2013; **29**: 501-508 [PMID: 23852142 DOI: 10.1097/MOG.0b013e3283640f4b]
- Singh A, Gelrud A, Agarwal B. Biliary strictures: diagnostic considerations and approach. *Gastroenterol Rep (Oxf)* 2015; **3**: 22-31 [PMID: 25355800]
- Laleman W, Verraes K, Van Steenberghe W, Cassiman D, Nevens F, Van der Merwe S, Verslype C. Usefulness of the single-operator cholangioscopy system SpyGlass in biliary disease: a single-center prospective cohort study and aggregated review. *Surg Endosc* 2017; **31**: 2223-2232 [PMID: 27604370 DOI: 10.1007/s00464-016-5221-2]
- Ishida Y, Itoi T, Okabe Y. Types of Peroral Cholangioscopy: How to Choose the Most Suitable Type of Cholangioscopy. *Curr Treat Options Gastroenterol* 2016; **14**: 210-219 [PMID: 27053226 DOI: 10.1007/s11938-016-0090-2]
- Chen YK, Pleskow DK. SpyGlass single-operator peroral cholangiopancreatography system for the diagnosis and therapy of bile-duct disorders: a clinical feasibility study (with video). *Gastrointest Endosc* 2007; **65**: 832-841 [PMID: 17466202 DOI: 10.1016/j.gie.2007.01.025]
- Woo YS, Lee JK, Noh DH, Park JK, Lee KH, Lee KT. SpyGlass cholangioscopy-assisted guidewire placement for post-LDLT biliary strictures: a case series. *Surg Endosc* 2016; **30**: 3897-3903 [PMID: 26684207 DOI: 10.1007/s00464-015-4695-7]
- Balderramo D, Sendino O, Miquel R, de Miguel CR, Bordas JM, Martinez-Palli G, Leoz ML, Rimola A, Navasa M, Llach J, Cardenas A. Prospective evaluation of single-operator peroral cholangioscopy in liver transplant recipients requiring an evaluation of the biliary tract. *Liver Transpl* 2013; **19**: 199-206 [PMID: 23404861]
- Navaneethan U, Venkatesh PG, Al Mohajer M, Gelrud A. Successful diagnosis and management of biliary cast syndrome in a liver transplant patient using single operator cholangioscopy. *JOP* 2011; **12**: 461-463 [PMID: 21904071]
- Franzini T, Moura R, Rodela G, Andraus W, Herman P, D'Albuquerque L, de Moura E. A novel approach in benign biliary stricture - balloon dilation combined with cholangioscopy-guided steroid injection. *Endoscopy* 2015; **47** Suppl 1: E571-E572 [PMID: 26610089]
- Chandrasekhara V, Khashab MA, Muthusamy VR, Acosta RD, Agrawal D, Bruining DH, Eloubeidi MA, Fanelli RD, Faulx AL, Gurudu SR, Kothari S, Lightdale JR, Qumseya BJ, Shaikat A, Wang A, Wani SB, Yang J, DeWitt JM. Adverse events associated with ERCP. *Gastrointest Endosc* 2017; **85**: 32-47 [PMID: 27546389 DOI: 10.1016/j.gie.2016.06.051]
- Ayoub WS, Esquivel CO, Martin P. Biliary complications following liver transplantation. *Dig Dis Sci* 2010; **55**: 1540-1546 [PMID: 20411422]
- Safdar K, Atiq M, Stewart C, Freeman ML. Biliary tract complications after liver transplantation. *Expert Rev Gastroenterol Hepatol* 2009; **3**: 183-195 [PMID: 19351288]
- Arain MA, Attam R, Freeman ML. Advances in endoscopic management of biliary tract complications after liver transplantation. *Liver Transpl* 2013; **19**: 482-498 [PMID: 23417867]
- Hüsing A, Cicinnati VR, Beckebaum S, Wilms C, Schmidt HH, Kabar I. Endoscopic ultrasound: valuable tool for diagnosis of biliary complications in liver transplant recipients? *Surg Endosc* 2015; **29**: 1433-1438 [PMID: 25159653]
- Tseng LJ, Jao YT, Mo LR, Lin RC. Over-the-wire US catheter probe as an adjunct to ERCP in the detection of choledocholithiasis. *Gastrointest Endosc* 2001; **54**: 720-723 [PMID: 11726847]
- Prat F, Amouyal G, Amouyal P, Pelletier G, Fritsch J, Choury AD, Buffet C, Etienne JP. Prospective controlled study of endoscopic ultrasonography and endoscopic retrograde cholangiography in patients with suspected common-bileduct lithiasis. *Lancet* 1996; **347**: 75-79 [PMID: 8538344]
- Benjaminov F, Stein A, Lichtman G, Pomeranz I, Konikoff FM. Consecutive versus separate sessions of endoscopic ultrasound (EUS) and endoscopic retrograde cholangiopancreatography (ERCP) for symptomatic choledocholithiasis. *Surg Endosc* 2013; **27**: 2117-2121 [PMID: 23389062]
- Guichelaar MM, Benson JT, Malinchoc M, Krom RA, Wiesner RH, Charlton MR. Risk factors for and clinical course of non-anastomotic biliary strictures after liver transplantation. *Am J Transplant* 2003; **3**: 885-890 [PMID: 12814481]
- Negm AA, Schott A, Vonberg RP, Weismueller TJ, Schneider AS, Kubicka S, Strassburg CP, Manns MP, Suerbaum S, Wedemeyer J, Lankisch TO. Routine bile collection for microbiological analysis during cholangiography and its impact on the management of cholangitis. *Gastrointest Endosc* 2010; **72**: 284-291 [PMID: 20541201]
- Millonig G, Buratti T, Graziadei IW, Schwaighofer H, Orth D, Margreiter R, Vogel W. Bactobilia after liver transplantation: frequency and antibiotic susceptibility. *Liver Transpl* 2006; **12**: 747-753 [PMID: 16628695 DOI: 10.1002/lt.20711]
- Gotthardt DN, Weiss KH, Rupp C, Bode K, Eckerle I, Rudolph G, Bergemann J, Kloeters-Plachky P, Chahoud F, Büchler MW, Schemmer P, Stremmel W, Sauer P. Bacteriobilia and fungibilia are associated with outcome in patients with endoscopic treatment of biliary complications after liver transplantation. *Endoscopy* 2013; **45**: 890-896 [PMID: 24165814]
- Kabar I, Hüsing A, Cicinnati VR, Heitschmidt L, Beckebaum S, Thölking G, Schmidt HH, Karch H, Kipp F. Analysis of bile colonization and intestinal flora may improve management in liver transplant recipients undergoing ERCP. *Ann Transplant* 2015; **20**: 249-255 [PMID: 25937259]

P- Reviewer: Kawakami H, Salvadori M S- Editor: Qi Y  
L- Editor: A E- Editor: Wang CH





Published by **Baishideng Publishing Group Inc**  
7901 Stoneridge Drive, Suite 501, Pleasanton, CA 94588, USA  
Telephone: +1-925-223-8242  
Fax: +1-925-223-8243  
E-mail: [bpgoffice@wjgnet.com](mailto:bpgoffice@wjgnet.com)  
Help Desk: <http://www.f6publishing.com/helpdesk>  
<http://www.wjgnet.com>



ISSN 1007-9327

