

# World Journal of *Gastroenterology*

*World J Gastroenterol* 2017 December 28; 23(48): 8439-8678



**EDITORIAL**

- 8439** Serum levels of angiotensin converting enzyme as a biomarker of liver fibrosis

*Miranda AS, Simões e Silva AC*

**MINIREVIEWS**

- 8443** Mechanisms of autophagy activation in endothelial cell and their targeting during normothermic machine liver perfusion

*Boteon YL, Laing R, Mergental H, Reynolds GM, Mirza DF, Afford SC, Bhogal RH*

**ORIGINAL ARTICLE****Basic Study**

- 8452** Human small intestine is capable of restoring barrier function after short ischemic periods

*Schellekens DH, Hundscheid IH, Leenarts CA, Grootjans J, Lenaerts K, Buurman WA, Dejong CH, Derikx JP*

- 8465** Stable gastric pentadecapeptide BPC 157 in treatment of colitis and ischemia and reperfusion in rats: New insights

*Duzel A, Vlainic J, Antunovic M, Malekinusic D, Vrdoljak B, Samara M, Gojkovic S, Krezic I, Vidovic T, Bilic Z, Knezevic M, Sever M, Lojo N, Kokot A, Kolovrat M, Drmic D, Vukojevic J, Kralj T, Kasnik K, Siroglavic M, Seiwerth S, Sikiric P*

- 8489** Exploring pathogenesis of primary biliary cholangitis by proteomics: A pilot study

*Deng CW, Wang L, Fei YY, Hu CJ, Yang YJ, Peng LY, Zeng XF, Zhang FC, Li YZ*

- 8500** Influence of TBX21 T-1993C variant on autoimmune hepatitis development by Yin-Yang 1 binding

*Sun W, Wu HY, Chen S*

- 8512** Astragaloside IV inhibits pathological functions of gastric cancer-associated fibroblasts

*Wang ZF, Ma DG, Zhu Z, Mu YP, Yang YY, Feng L, Yang H, Liang JQ, Liu YY, Liu L, Lu HW*

**Retrospective Cohort Study**

- 8526** Prevalence and outcomes of pancreatic cystic neoplasms in liver transplant recipients

*Liu K, Joshi V, van Camp L, Yang QW, Baars JE, Strasser SI, McCaughan GW, Majumdar A, Saxena P, Kaffes AJ*

**Retrospective Study**

- 8533** Analysis of 12 variants in the development of gastric and colorectal cancers

*Cavalcante GC, Amador MA, Ribeiro dos Santos AM, Carvalho DC, Andrade RB, Pereira EE, Fernandes MR, Costa DF, Santos NP, Assumpção PP, Ribeiro dos Santos Á, Santos S*

- 8544** Childhood-onset inflammatory bowel diseases associated with mutation of Wiskott-Aldrich syndrome protein gene

*Ohya T, Yanagimachi M, Iwasawa K, Umetsu S, Sogo T, Inui A, Fujisawa T, Ito S*

- 8553** Comparison of totally laparoscopic total gastrectomy using an endoscopic linear stapler with laparoscopic-assisted total gastrectomy using a circular stapler in patients with gastric cancer: A single-center experience

*Gong CS, Kim BS, Kim HS*

- 8562** Prognostic significance of pretreatment serum carcinoembryonic antigen levels in gastric cancer with pathological lymph node-negative: A large sample single-center retrospective study

*Xiao J, Ye ZS, Wei SH, Zeng Y, Lin ZM, Wang Y, Teng WH, Chen LC*

- 8570** Fecal microbiota transplantation induces remission of infantile allergic colitis through gut microbiota re-establishment

*Liu SX, Li YH, Dai WK, Li XS, Qiu CZ, Ruan ML, Zou B, Dong C, Liu YH, He JY, Huang ZH, Shu SN*

- 8582** Prognostic value of lymph node metastasis in patients with T1-stage colorectal cancer from multiple centers in China

*Sun ZQ, Ma S, Zhou QB, Yang SX, Chang Y, Zeng XY, Ren WG, Han FH, Xie X, Zeng FY, Sun XT, Wang GX, Li Z, Zhang ZY, Song JM, Liu JB, Yuan WT*

#### Clinical Trial Study

- 8591** Association between acute pancreatitis and small intestinal bacterial overgrowth assessed by hydrogen breath test

*Zhang M, Zhu HM, He F, Li BY, Li XC*

#### Observational Study

- 8597** Endoscopic papillary large balloon dilatation with sphincterotomy is safe and effective for biliary stone removal independent of timing and size of sphincterotomy

*Aujla UI, Ladep N, Dwyer L, Hood S, Stern N, Sturgess R*

- 8605** Person-centered endoscopy safety checklist: Development, implementation, and evaluation

*Dubois H, Schmidt PT, Creutzfeldt J, Bergenmar M*

#### Randomized Clinical Trials

- 8615** Multicenter, randomized study to optimize bowel preparation for colon capsule endoscopy

*Kastenberg D, Burch WC, Romeo DP, Kashyap PK, Pound DC, Papageorgiou N, Fernández-Urien Sainz I, Sokach CE, Rex DK*

**SYSTEMATIC REVIEWS**

- 8626** *Fusobacterium's* link to colorectal neoplasia sequenced: A systematic review and future insights

*Hussan H, Clinton SK, Roberts K, Bailey MT*

- 8651** Psychiatric morbidity after surgery for inflammatory bowel disease: A systematic review

*Zangenberg MS, El-Hussuna A*

**CASE REPORT**

- 8660** Stricturing Crohn's disease-like colitis in a patient treated with belatacept

*Bozon A, Jeantet G, Rivière B, Funakoshi N, Dufour G, Combes R, Valats JC, Delmas S, Serre JE, Bismuth M, Ramos J, Le Quintrec M, Blanc P, Pineton de Chambrun G*

- 8666** Emphysematous pancreatitis associated with penetrating duodenal ulcer

*Tana C, Silingardi M, Giamberardino MA, Cipollone F, Meschi T, Schiavone C*

- 8671** Infiltrative xanthogranulomatous cholecystitis mimicking aggressive gallbladder carcinoma: A diagnostic and therapeutic dilemma

*Nacif LS, Hessheimer AJ, Rodríguez Gómez S, Montironi C, Fondevila C*



**ABOUT COVER**

Editorial board member of *World Journal of Gastroenterology*, Paola Iovino, MD, Associate Professor, Lecturer, Department of Medicine and Surgery, AOU San Giovanni di Dio e Ruggi di Aragona, Salerno 84131, Italy

**AIMS AND SCOPE**

*World Journal of Gastroenterology* (*World J Gastroenterol*, *WJG*, print ISSN 1007-9327, online ISSN 2219-2840, DOI: 10.3748) is a peer-reviewed open access journal. *WJG* was established on October 1, 1995. It is published weekly on the 7<sup>th</sup>, 14<sup>th</sup>, 21<sup>st</sup>, and 28<sup>th</sup> each month. The *WJG* Editorial Board consists of 1375 experts in gastroenterology and hepatology from 68 countries.

The primary task of *WJG* is to rapidly publish high-quality original articles, reviews, and commentaries in the fields of gastroenterology, hepatology, gastrointestinal endoscopy, gastrointestinal surgery, hepatobiliary surgery, gastrointestinal oncology, gastrointestinal radiation oncology, gastrointestinal imaging, gastrointestinal interventional therapy, gastrointestinal infectious diseases, gastrointestinal pharmacology, gastrointestinal pathophysiology, gastrointestinal pathology, evidence-based medicine in gastroenterology, pancreatology, gastrointestinal laboratory medicine, gastrointestinal molecular biology, gastrointestinal immunology, gastrointestinal microbiology, gastrointestinal genetics, gastrointestinal translational medicine, gastrointestinal diagnostics, and gastrointestinal therapeutics. *WJG* is dedicated to become an influential and prestigious journal in gastroenterology and hepatology, to promote the development of above disciplines, and to improve the diagnostic and therapeutic skill and expertise of clinicians.

**INDEXING/ABSTRACTING**

*World Journal of Gastroenterology* (*WJG*) is now indexed in Current Contents<sup>®</sup>/Clinical Medicine, Science Citation Index Expanded (also known as SciSearch<sup>®</sup>), Journal Citation Reports<sup>®</sup>, Index Medicus, MEDLINE, PubMed, PubMed Central and Directory of Open Access Journals. The 2017 edition of Journal Citation Reports<sup>®</sup> cites the 2016 impact factor for *WJG* as 3.365 (5-year impact factor: 3.176), ranking *WJG* as 29<sup>th</sup> among 79 journals in gastroenterology and hepatology (quartile in category Q2).

**FLYLEAF**

**I-IX Editorial Board**

**EDITORS FOR THIS ISSUE**

**Responsible Assistant Editor:** *Xiang Li*  
**Responsible Electronic Editor:** *Yu-Jie Ma*  
**Proofing Editor-in-Chief:** *Lian-Sheng Ma*

**Responsible Science Editor:** *Ze-Mao Gong*  
**Proofing Editorial Office Director:** *Jin-Lei Wang*

**NAME OF JOURNAL**  
*World Journal of Gastroenterology*

**ISSN**  
ISSN 1007-9327 (print)  
ISSN 2219-2840 (online)

**LAUNCH DATE**  
October 1, 1995

**FREQUENCY**  
Weekly

**EDITORS-IN-CHIEF**  
**Damian Garcia-Olmo, MD, PhD, Doctor, Professor, Surgeon**, Department of Surgery, Universidad Autonoma de Madrid; Department of General Surgery, Fundacion Jimenez Diaz University Hospital, Madrid 28040, Spain

**Stephen C Strom, PhD, Professor**, Department of Laboratory Medicine, Division of Pathology, Karolinska Institutet, Stockholm 141-86, Sweden

**Andrzej S Tarnawski, MD, PhD, DSc (Med), Professor of Medicine, Chief Gastroenterology**, VA Long Beach Health Care System, University of California, Irvine, CA, 5901 E. Seventh Str., Long Beach,

CA 90822, United States

**EDITORIAL BOARD MEMBERS**  
All editorial board members resources online at <http://www.wjgnet.com/1007-9327/editorialboard.htm>

**EDITORIAL OFFICE**  
Jin-Lei Wang, Director  
Ze-Mao Gong, Vice Director  
*World Journal of Gastroenterology*  
Baishideng Publishing Group Inc  
7901 Stoneridge Drive, Suite 501,  
Pleasanton, CA 94588, USA  
Telephone: +1-925-2238242  
Fax: +1-925-2238243  
E-mail: [editorialoffice@wjgnet.com](mailto:editorialoffice@wjgnet.com)  
Help Desk: <http://www.f6publishing.com/helpdesk>  
<http://www.wjgnet.com>

**PUBLISHER**  
Baishideng Publishing Group Inc  
7901 Stoneridge Drive, Suite 501,  
Pleasanton, CA 94588, USA  
Telephone: +1-925-2238242  
Fax: +1-925-2238243  
E-mail: [bpgoffice@wjgnet.com](mailto:bpgoffice@wjgnet.com)  
Help Desk: <http://www.f6publishing.com/helpdesk>  
<http://www.wjgnet.com>

**PUBLICATION DATE**  
December 28, 2017

**COPYRIGHT**  
© 2017 Baishideng Publishing Group Inc. Articles published by this Open-Access journal are distributed under the terms of the Creative Commons Attribution Non-commercial License, which permits use, distribution, and reproduction in any medium, provided the original work is properly cited, the use is non commercial and is otherwise in compliance with the license.

**SPECIAL STATEMENT**  
All articles published in journals owned by the Baishideng Publishing Group (BPG) represent the views and opinions of their authors, and not the views, opinions or policies of the BPG, except where otherwise explicitly indicated.

**INSTRUCTIONS TO AUTHORS**  
Full instructions are available online at <http://www.wjgnet.com/bpg/gerinfo/204>

**ONLINE SUBMISSION**  
<http://www.f6publishing.com>

## Retrospective Study

# Prognostic significance of pretreatment serum carcinoembryonic antigen levels in gastric cancer with pathological lymph node-negative: A large sample single-center retrospective study

Jun Xiao, Zai-Sheng Ye, Sheng-Hong Wei, Yi Zeng, Zhen-Meng Lin, Yi Wang, Wen-Hao Teng, Lu-Chuan Chen

Jun Xiao, Zai-Sheng Ye, Sheng-Hong Wei, Yi Zeng, Zhen-Meng Lin, Yi Wang, Wen-Hao Teng, Lu-Chuan Chen, Department of Gastrointestinal Surgery, Fujian Cancer Hospital and Fujian Medical University Cancer Hospital, Fuzhou 350001, Fujian province, China

**Author contributions:** Xiao J, Ye ZS, Wei SH, Teng WH and Zeng Y participated in the design of the study, acquisition of data, and article revisions; Wang Y and Chen LC analyzed the data and wrote the article; all authors have approved the final version of the article.

**Supported by** Domestic Support from Young and Middle-aged Key Personnel Training Program for Provincial Health Planning Students, No. 2017-ZQN-18; Provincial Youth Health Science Research Project, No. 2014-2-8 and No. 2017-1-13; and National Key Clinical Specialty Construction Project, No. 2013-2016.

**Institutional review board statement:** This study was approved by Institutional Ethnic Committee of Fujian Medical University Cancer Hospital.

**Informed consent statement:** Patients were not required to give informed consent to the study because the analysis used anonymous clinical data that were obtained after each patient agreed to treatment by verbal consent. Individuals can't be identified according to the data presented.

**Conflict-of-interest statement:** The authors declare no conflicts of interest regarding this manuscript.

**Data sharing statement:** No additional data are available.

**Open-Access:** This article is an open-access article which was selected by an in-house editor and fully peer-reviewed by external reviewers. It is distributed in accordance with the Creative Commons Attribution Non Commercial (CC BY-NC 4.0) license, which permits others to distribute, remix, adapt, build upon this work non-commercially, and license their derivative works on different terms, provided the original work is properly cited and

the use is non-commercial. See: <http://creativecommons.org/licenses/by-nc/4.0/>

**Manuscript source:** Unsolicited manuscript

**Correspondence to:** Lu-Chuan Chen, MD, Department of Gastrointestinal Surgery, Fujian Cancer Hospital and Fujian Medical University Cancer Hospital, Fuzhou 350001, Fujian Province, China. [luchuanchen@sina.cn](mailto:luchuanchen@sina.cn)  
**Telephone:** +86-591-83660063  
**Fax:** +86-591-83660063

**Received:** July 28, 2017

**Peer-review started:** August 2, 2017

**First decision:** August 10, 2017

**Revised:** August 19, 2017

**Accepted:** November 22, 2017

**Article in press:** November 22, 2017

**Published online:** December 28, 2017

## Abstract

### AIM

To assess whether elevated serum carcinoembryonic antigen (CEA) is in the inferior prognosis for pathological lymph node-negative (pN<sub>0</sub>) gastric cancer (GC) patients who underwent D<sub>2</sub> gastrectomy.

### METHODS

About 469 pN<sub>0</sub> GC patients, who received D<sub>2</sub> radical gastrectomy were retrospectively analyzed. The X-tile plots cut-off point for CEA were 30.02 ng/mL using minimum *P*-value from log-rank  $\chi^2$  statistics, and pN<sub>0</sub> GC patients were assigned to two groups: those more than 30.02 ng/mL (*n* = 48; CEA-high group) and those less than 30.02 ng/mL (*n* = 421; CEA-low group). Clinicopathologic characteristics were compared using

Pearson's  $\chi^2$  or Fisher's exact tests, and survival curves were so manufactured using the Kaplan-Meier method. Univariate and multivariate analysis were carried out using the logistic regression method.

## RESULTS

The percentage of vessel carcinoma embolus (31.35% *vs* 17.1%) and advanced GC (T<sub>2-4b</sub>) (81.25% *vs* 65.32%) were higher in CEA-high group than CEA-low group. The CEA-positive patients had a significantly poorer prognosis than the CEA-negative patients in terms of overall survival (57.74% *vs* 90.69%,  $P < 0.05$ ), and no different was found between subgroup of T category, differentiation, nerve invasion, and vessel carcinoma embolus (all  $P > 0.05$ ). Multivariate survival analysis showed that CEA (OR = 4.924), and T category (OR = 2.214) were significant prognostic factors for stage pN<sub>0</sub> GC (all  $P < 0.05$ ). Besides, only T category (OR = 1.962) was an independent hazard factor in the CEA-high group ( $P < 0.05$ ).

## CONCLUSION

Those pretreatment serum CEA levels over 30.02 ng/mL on behalf of worse characteristics and unfavourable tumor behavior, and a poor prognosis for a nearly doubled risk of mortality in GC patients.

**Key words:** Carcinoembryonic antigen; Gastric cancer; Pathological lymph node-negative; X-tile plots; 5-year survival rate

© The Author(s) 2017. Published by Baishideng Publishing Group Inc. All rights reserved.

**Core tip:** Currently, the survival rate for gastric cancer (GC) is still unsatisfactory. Reliable biomarker such as carcinoembryonic antigen (CEA) is necessary to improve the management of GC and pathological lymph node-negative (pN<sub>0</sub>) represents a group of reliable biological status. About 469 pN<sub>0</sub> GC patients, who received D<sub>2</sub> radical gastrectomy were retrospectively analyzed, and an optimal cut-off value of CEA was reset, and we found that pretreatment serum CEA levels over 30.02 ng/mL on behalf of worse characteristics and unfavourable tumor behavior, and a poor prognosis for a nearly doubled risk of mortality in staging pN<sub>0</sub> GC patients.

Xiao J, Ye ZS, Wei SH, Zeng Y, Lin ZM, Wang Y, Teng WH, Chen LC. Prognostic significance of pretreatment serum carcinoembryonic antigen levels in gastric cancer with pathological lymph node-negative: A large sample single-center retrospective study. *World J Gastroenterol* 2017; 23(48): 8562-8569 Available from: URL: <http://www.wjgnet.com/1007-9327/full/v23/i48/8562.htm> DOI: <http://dx.doi.org/10.3748/wjg.v23.i48.8562>

## INTRODUCTION

Currently, the therapeutic effect for gastric cancer (GC) is still dispiriting<sup>[1]</sup>, especially in China. This reason may be partly ascribed to the delayed diagnosis of GC. In addition to tumor-nodes-metastasis (TNM) stage and selection of treatment, the survival rate of GC patients may be hit by other factors such as differentiation, behavior and genetic mutation<sup>[2]</sup>.

Pathological lymph node-negative (pN<sub>0</sub>) represents a group of reliable biological status, however, the survival for patients can unending changes, even when they share the same clinical stage<sup>[3]</sup>. Therefore, clinicians and researchers keep looking for other survival factors that might be able to help in the selection of a suitable treatment strategy.

Carcinoembryonic antigen (CEA), an acknowledged as an intracellular adhesion molecule, is one of the most common markers used in GC<sup>[2]</sup>. Up to now, many studies showed that extremely elevated serum CEA, which is closely related to an awful prognosis<sup>[4]</sup>. Numerous studies have been in favor of preoperative CEA levels as predictive marker for the survival situation of GC<sup>[5-8]</sup>. However, other studies have reported the opposite results<sup>[9-13]</sup>. Inconsistent views can be partly explained by different cutoff values of CEA, limited number of eligible cases and study endpoints, and the inadequate statistical power.

To solve the above-mentioned problem, we performed a large sample retrospective study and reset an optimal cut-off value of CEA and to explore the relationship between preoperative serum CEA and clinicopathological traits and prognostic information.

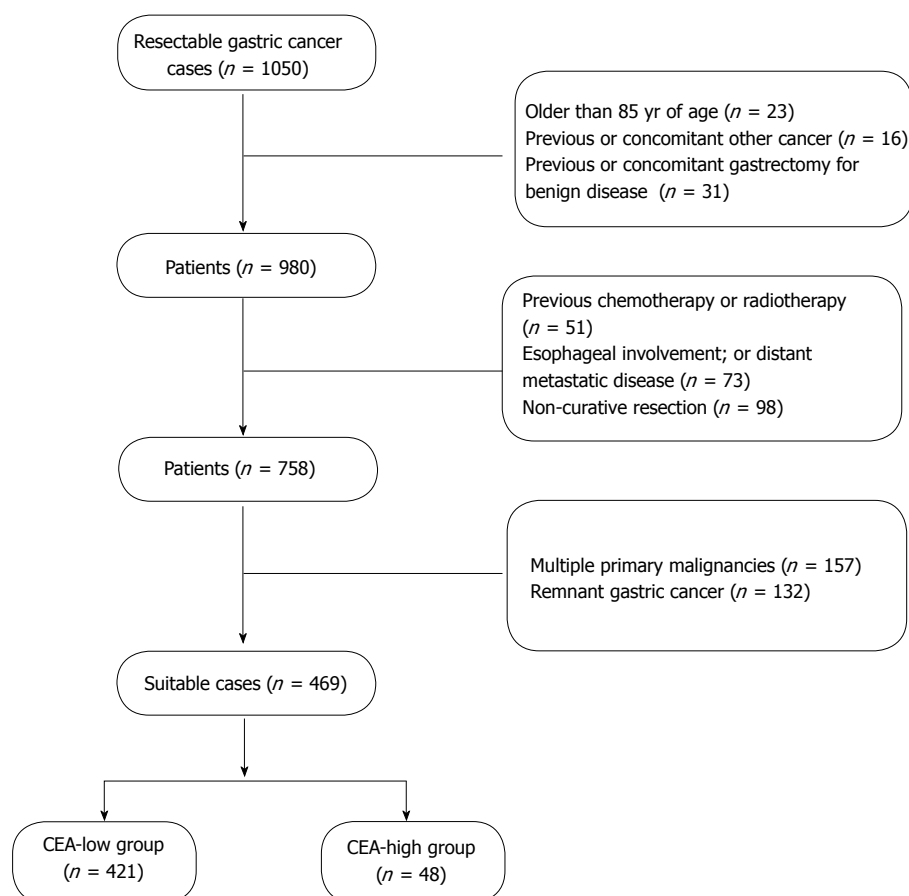
## MATERIALS AND METHODS

### Patients

From January 2000 to December 2010, a retrospective analysis was conducted of 1801 consecutive patients with GC who underwent D<sub>2</sub> lymphadenectomy, at the Department of gastrointestinal surgery, Fujian tumor hospital. Among them, 469 pN<sub>0</sub> resectable GC patients suffered from stage pTxN<sub>0</sub>M<sub>0</sub> GC according to the 7<sup>th</sup> edition of the TNM classification. Data from these patients were enrolled into a prospectively maintained database.

The inclusion criteria were as follows: (1) pN<sub>0</sub> resectable GC; (2) Adenocarcinoma confirmed by histopathology; (3) Physical fitness suitable for surgery; (4) D<sub>2</sub> lymphadenectomy; and (5) no prior history of any type of adjunctive therapy.

The exclusion criteria were as follows: (1) older than 85 years of age; (2) previous or concomitant other cancer; (3) previous or concomitant gastrectomy for benign disease; (4) previous chemotherapy or



**Figure 1** Inclusion and exclusion criteria. CEA: Carcinoembryonic antigen.

radiotherapy; (5) esophageal involvement; or (6) distant metastatic disease; (7) non-curative resection; (8) multiple primary malignancies; (9) remnant GC; and (10) mortality within 30 d after surgery (Figure 1).

All of the above patients were followed up by posting letters or by telephone interviews. The last follow-up was 1 January 2017. The cardiopathology logical and follow-up findings were collected and recorded in the database. All subjects gave written informed consent to the study protocol, which was approved by the Ethical Committees of Fujian Provincial Tumor Hospital.

### Surgery

According to the 7<sup>th</sup> edition NCCN guidelines<sup>[2]</sup>, surgery with lymph node (LN) dissection is the primary treatment option for medically fit patients with resectable T<sub>1b</sub>, any N tumors. All patients in the study underwent standard total or distal gastrectomy, depending on the location and macroscopic appearance of the primary tumor (Table 1). The strategy for LN dissections was determined using a standardized technique according to the guidelines of the 2010 Japanese Classification of Gastric Cancer and Gastric Cancer Treatment Guidelines edited by the Japanese Gastric Cancer Association<sup>[14]</sup>.

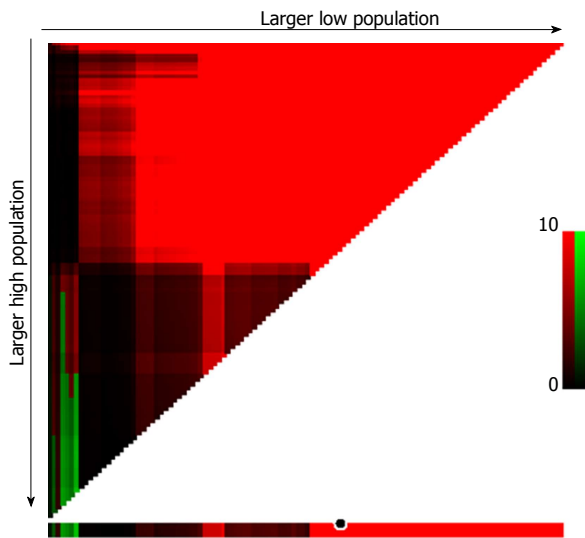
### Clinicopathological characteristics

The clinicopathological findings, including depth of tumor invasion and LN metastases, were utilized to stage tumors according to the 7<sup>th</sup> edition NCCN guidelines<sup>[2]</sup>. LNs were dissected and described according to the Japanese Classification of Gastric Carcinoma<sup>[14]</sup>, which was also used to classify the location, histological type, and lymphatic invasion of tumors.

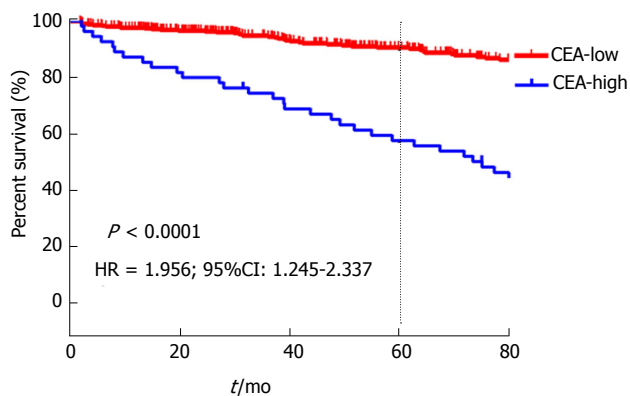
### Statistical analysis

Statistical analyses were conducted using Statistical Product for Social Sciences (SPSS) 19.0 software (SPSS, Inc, Chicago, IL, United States). The distribution of baseline characteristics was compared by using either Fisher's exact test or the chi-square test. The CEA cut-off points were produced and analyzed using the X-tile program which identified the cut-off with the minimum *P* values from log-rank  $\chi^2$  statistics for the categorical CEA in terms of survival. Meaningful factors were extracted for further analysis, which was conducted by using the logistic regression method. The overall cumulative probability of survival was calculated by the Kaplan-Meier method, and differences were evaluated by using the log-rank test. A *P* value less than 0.05 was regarded as statistically significant.





**Figure 2** Division of patients by the cut-off points produced by X-tile plot. X-tile plots for CEA. The produced log-rank  $\chi^2$  value stratifies the pTxN0M0 GC patients into two groups by a cut-off value 30.02 ng/mL, showing a strong discriminatory capacity, with a  $\chi^2$  value of 85.15 and a relative risk ratio of 1:2.15. CEA: Carcinoembryonic antigen.



**Figure 3** Survival analysis of pN0 patients with gastric cancer undergoing curative intent surgery. The *P* values for the survival comparison was determined by the log-rank test. CEA: Carcinoembryonic antigen.

## RESULTS

### Correlation analysis between the clinicopathologic factors and CEA

X-tile plots, constructed in Figure 2, illustrated that the optimal cut-off point for CEA was 30.02 ng/mL, and GC patients with in stage pN<sub>0</sub> were assigned to two groups: those more than 30.02 ng/mL (*n* = 48; CEA-high group) and those less than 30.02 ng/mL (*n* = 421; CEA-low group), with the strongest discriminatory capacity, with a  $\chi^2$  value of 85.15 and a relative risk ratio of 1:2.15.

### Clinicopathological characteristics

Depending on the 7<sup>th</sup> editions of the TNM system, a total of 469 pN<sub>0</sub> GC patients were recruited in this study. Patient demographic data are summarized in Table 1. Overall, no observably difference was found

**Table 1** Demographic data of the 469 patients with gastric cancer, *n* (%)

| Characteristics          | CEA-Low group<br>( <i>n</i> = 421) | CEA-High group<br>( <i>n</i> = 48) | <i>P</i> value     |
|--------------------------|------------------------------------|------------------------------------|--------------------|
| Age (yr), mean $\pm$ SD  | 58.74 $\pm$ 10.98,<br>60 (20-83)   | 60.4 $\pm$ 11.55,<br>61 (31-78)    |                    |
| Gender                   |                                    |                                    | 0.657              |
| Female                   | 118 (28)                           | 12 (25)                            |                    |
| Male                     | 303 (72)                           | 36 (75)                            |                    |
| Male-to-female ratio     | 2.81:1                             | 3:01                               |                    |
| Family history           |                                    |                                    | 0.930              |
| Positive                 | 8 (1.9)                            | 1 (2.01)                           |                    |
| Negative                 | 413 (98.1)                         | 47 (97.99)                         |                    |
| HP infection status      |                                    |                                    | 0.708              |
| Positive                 | 37 (8.8)                           | 5 (10.4)                           |                    |
| Negative                 | 384 (91.2)                         | 43 (89.6)                          |                    |
| BMI (kg/m <sup>2</sup> ) |                                    |                                    | 0.358              |
| Less than 18.5           | 28 (6.65)                          | 4 (8.33)                           |                    |
| 18.5-24.99               | 304 (72.21)                        | 38 (79.17)                         |                    |
| More than 25             | 89 (21.14)                         | 6 (12.5)                           |                    |
| Differentiation degree   |                                    |                                    | 0.302              |
| Well                     | 226 (53.7)                         | 22 (45.8)                          |                    |
| Poor                     | 195 (46.3)                         | 26 (54.2)                          |                    |
| Location                 |                                    |                                    | 0.779              |
| Upper                    | 113 (26.8)                         | 16 (33.33)                         |                    |
| Middle                   | 129 (30.64)                        | 10 (20.83)                         |                    |
| Lower                    | 168 (39.9)                         | 21 (43.75)                         |                    |
| Mixed                    | 11 (2.61)                          | 1 (2.08)                           |                    |
| Lauren classification    |                                    |                                    | 0.668              |
| Intestinal type          | 105 (24.94)                        | 10 (20.83)                         |                    |
| Diffuse type             | 270 (64.13)                        | 31 (64.59)                         |                    |
| Mixed type               | 46 (10.93)                         | 7 (14.58)                          |                    |
| T category               |                                    |                                    | 0.033 <sup>a</sup> |
| T1a                      | 68 (16.2)                          | 4 (8.3)                            |                    |
| T1b                      | 78 (18.5)                          | 5 (10.4)                           |                    |
| T2                       | 89 (21.1)                          | 13 (27.1)                          |                    |
| T3                       | 65 (15.4)                          | 14 (29.2)                          |                    |
| T4a                      | 116 (27.6)                         | 10 (20.8)                          |                    |
| T4b                      | 5 (1.2)                            | 2 (4.2)                            |                    |
| T1                       | 146 (34.68)                        | 9 (18.75)                          | 0.026 <sup>a</sup> |
| T2-4b                    | 275 (65.32)                        | 39 (81.25)                         |                    |
| Nerve invasion           |                                    |                                    | 0.275              |
| Positive                 | 70 (16.6)                          | 11 (22.92)                         |                    |
| Negative                 | 351 (83.4)                         | 37 (77.08)                         |                    |
| Vessel carcinoma embolus |                                    |                                    | 0.017 <sup>a</sup> |
| Positive                 | 72 (17.1)                          | 15 (31.35)                         |                    |
| Negative                 | 349 (82.9)                         | 33 (68.75)                         |                    |

<sup>a</sup>*P* < 0.05. HP: *Helicobacter pylori*; BMI: Body mass index; CEA: Carcinoembryonic antigen.

in these characteristics, including gender, age, family history (FH), HP infection status, BMI, location, and lauren classification (all *P* > 0.05).

A slightly higher proportion of male patients constituted in the CEA-high patients (76% vs 64.04%), and male-to-female ratio was 3:1 among the CEA-high compare to 2.81:1 with CEA-low patients. In the CEA-high group, the proportion of was slightly higher than the negative group in poor differentiation (54.2% vs 46.3%), and nerve invasion (22.92% vs 16.6%). What is more, percentage was dramatically higher in CEA-high group than CEA-low counterparts in stage of T<sub>2-4b</sub> (81.25% vs 65.32%, *P* = 0.026), vessel carcinoma

**Table 2** Multivariate analysis for stage pTxNOM0 gastric cancer patients with D2 resection

|                          | Univariate analysis |        |                        |       | Multivariate analysis |         |                        |       |
|--------------------------|---------------------|--------|------------------------|-------|-----------------------|---------|------------------------|-------|
|                          | P value             | Exp(B) | 95%CI used for Exp (B) |       | P value               | Exp (B) | 95%CI used for Exp (B) |       |
|                          |                     |        | Lower                  | Upper |                       |         | Lower                  | Upper |
| Family history           | 0.912               | 0.923  | 0.765                  | 1.311 | 0.069                 | 1.017   | 0.72                   | 1.896 |
| HP infection status      | 0.209               | 0.832  | 0.781                  | 1.226 | 0.754                 | 1.088   | 0.643                  | 1.840 |
| Gender                   | 0.000 <sup>a</sup>  | 1.716  | 1.316                  | 2.553 | 0.590                 | 0.898   | 0.608                  | 1.327 |
| CEA                      | 0.000 <sup>a</sup>  | 1.919  | 1.319                  | 2.352 | 0.000 <sup>a</sup>    | 1.924   | 1.353                  | 2.232 |
| Location                 | 0.245               | 0.841  | 0.792                  | 1.234 | 0.749                 | 1.012   | 0.861                  | 1.531 |
| Lauren classification    | 0.241               | 0.851  | 0.814                  | 1.091 | 0.711                 | 1.109   | 0.891                  | 1.154 |
| T category               | 0.000 <sup>a</sup>  | 1.906  | 1.659                  | 2.271 | 0.009 <sup>a</sup>    | 1.714   | 1.050                  | 2.403 |
| Differentiation degree   | 0.279               | 0.932  | 0.881                  | 1.126 | 0.784                 | 1.188   | 0.663                  | 1.640 |
| Nerve invasion           | 0.971               | 0.801  | 0.731                  | 1.145 | 0.097                 | 0.951   | 0.7768                 | 1.655 |
| Vessel carcinoma embolus | 0.000 <sup>a</sup>  | 1.764  | 1.321                  | 2.562 | 0.983                 | 0.994   | 0.895                  | 1.660 |
| BMI                      | 0.732               | 0.812  | 0.729                  | 1.234 | 0.356                 | 1.228   | 0.912                  | 2.229 |

<sup>a</sup>P < 0.05. HP: *Helicobacter pylori*; BMI: Body mass index; CEA: Carcinoembryonic antigen.

**Table 3** Multivariate analysis of overall survival in pTxNOM0 gastric cancer patients

|                          | CEA-Low group (n = 421) |        |       |       | CEA-High group (n = 48) |        |       |       |
|--------------------------|-------------------------|--------|-------|-------|-------------------------|--------|-------|-------|
|                          | P value                 | Exp(B) | 95%CI |       | P value                 | Exp(B) | 95%CI |       |
|                          |                         |        | Lower | Upper |                         |        | Lower | Upper |
| Family history           | 0.077                   | 2.978  | 0.888 | 3.986 | 0.512                   | 1.191  | 0.501 | 2.019 |
| HP infection status      | 0.140                   | 1.590  | 0.858 | 2.947 | 0.247                   | 0.522  | 0.174 | 1.570 |
| Gender                   | 0.478                   | 0.834  | 0.504 | 1.378 | 0.919                   | 1.036  | 0.527 | 2.037 |
| Location                 | 0.482                   | 0.831  | 0.764 | 1.124 | 0.897                   | 1.012  | 0.752 | 2.102 |
| Lauren classification    | 0.831                   | 0.911  | 0.891 | 1.103 | 0.843                   | 1.245  | 0.984 | 1.435 |
| T category               | 0.647                   | 0.941  | 0.725 | 1.222 | 0.001 <sup>a</sup>      | 1.962  | 1.139 | 2.629 |
| Differentiation degree   | 0.879                   | 0.931  | 0.811 | 1.176 | 0.884                   | 1.148  | 0.673 | 1.641 |
| Nerves invaded           | 0.811                   | 1.090  | 0.539 | 2.205 | 0.987                   | 0.993  | 0.438 | 2.251 |
| Vessel carcinoma embolus | 0.064                   | 0.315  | 0.093 | 1.068 | 0.883                   | 0.889  | 0.685 | 2.281 |
| BMI                      | 0.392                   | 0.424  | 0.851 | 1.124 | 0.356                   | 1.228  | 0.912 | 2.229 |

<sup>a</sup>P < 0.05. HP: *Helicobacter pylori*; BMI: Body mass index; CEA: Carcinoembryonic antigen.

embolus (31.35% vs 17.1%,  $P = 0.017$ ) among the CEA-positive group.

### Survival analysis

The 5-year OS of stage pN<sub>0</sub> GC patients with high level of CEA was significantly inferior than CEA-low groups (57.74% vs 90.69%,  $P < 0.05$ , Figure 3).

### Univariate and multivariate analysis

Univariate analysis exhibited that FH of GC, HP infection status, gender, CEA, T category, differentiation degree, location, and lauren classification, nerve invasion, vessel carcinoma embolus, and BMI; among which T category (OR = 1.906), CEA (OR = 1.919), vessel carcinoma embolus (OR = 1.764), and gender (OR = 1.716) were independent hazard prognostic factors (all  $P < 0.05$ , Table 2, Figure 4A).

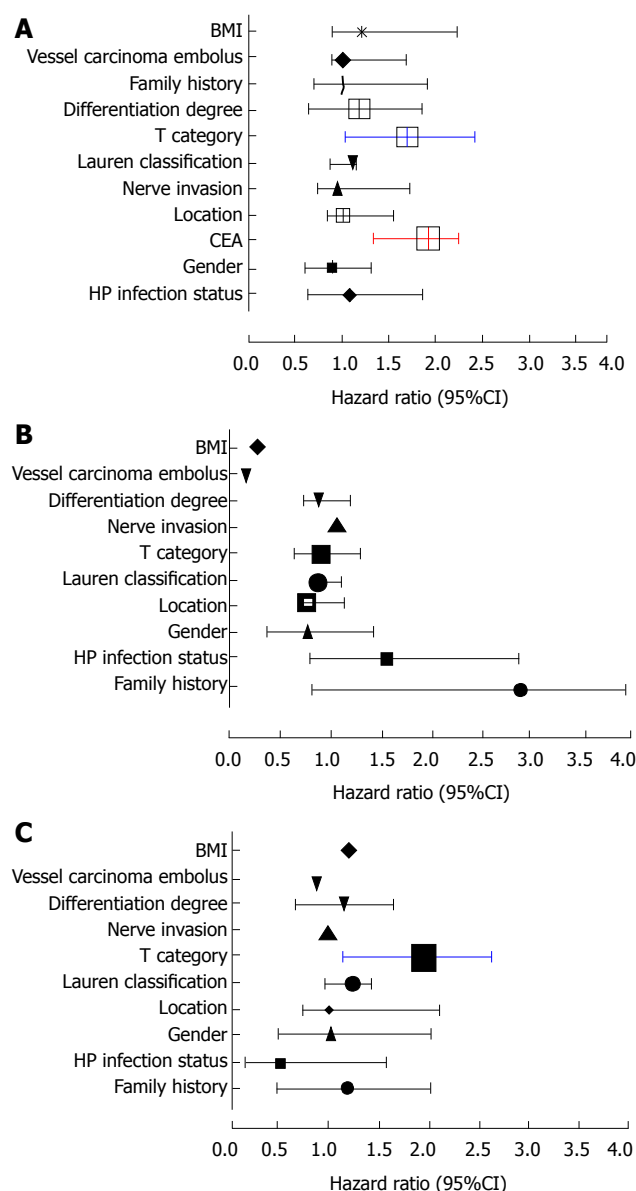
Further multivariate analysis showed that CEA (OR = 1.924), T category (OR = 1.714) were significant prognostic factors for pN<sub>0</sub> GC (all  $P < 0.05$ , Table 2, Figure 4B). In the CEA-high sub-group, T category (OR = 1.962) was an independent hazard factor in CEA-high group by multivariate analysis ( $P < 0.05$ , Table 3, Figure 4C).

## DISCUSSION

As we known, CEA is part of the most familiarly used cancer biomarkers, and high preoperative CEA are closely associated with tumor load<sup>[10,15-19]</sup>. However, there had been few literatures regarding the treatment outcome of evaluating the prognostic significance of CEA, in particularly to those pN<sub>0</sub> GC patients. Previous studies have offered ambivalent testimony on the survival value of pretreatment CEA levels in resectable GC.

At the present stage, there existed no unified and well-recognized cut-off points<sup>[2]</sup>. Tied to various objective factors such as the sample size, different follow-up periods, ethnicities and different tumor stage, it led to inconsistent bias. To strengthen the statistical power, we collected a large sample analysis, and the number of eligible patients on the basis of similar endpoints. In the present study, the cut-off point was applied to 30.02 ng/mL.

In addition, study characteristics that miscellaneous large span studies might have influenced the effect size in GC patients. To confirm this synergistic effect, we performed subgroup analyses by clinicopathologic baseline. Firstly, in the CEA-high group, the proportion



**Figure 4** Univariate and multivariate analyses for pN0 gastric cancer patients using the Cox regression model. A: HR was calculated in multivariate analyses; B: HR was calculated in CEA-low group; C: HR was calculated for CEA-high group. CEA: Carcinoembryonic antigen; HR: Hazard ratio.

of was slightly higher than the negative group in poor differentiation (54.2% vs 46.3%), and nerve invasion (22.92% vs 16.6%), showing that CEA-high GC patients with stage pN0 may be at higher risk, and it should be remunerated meticulous attention to the crowd.

Although the biological actions of CEA are not fully understood, the close link of preoperative CEA to cancer aggressiveness has been known for many years<sup>[20]</sup>. Specifically, the patients with a high level of CEA were consulted more frequently in the presence of a advanced stage ( $T_{2-4b}$ : 81.25% vs 65.32%,  $P = 0.026$ ), vessel carcinoma embolus (31.35% vs 17.1%,  $P = 0.017$ ). The baseline data supported the view that a high level of CEA in stage pN0 patients were identified as having

worse biological behavior and more aggressive baseline conditions, which might be fastened to a potential genetic susceptibility and infaust living habits<sup>[21-24]</sup>.

In consideration of worse characteristics and unfavourable tumor behavior, CEA-high patients' survival rate was poor. In the data, the 5-year OS of patients with high expression of CEA was strikingly inferior (57.74% vs 90.69%,  $P < 0.05$ ). The data added weight to show that preoperative prominent CEA correlates with more aggressive and poor survival, and the point above had to be in conformity with a former research<sup>[25]</sup>.

Further verification was tested by multivariate analysis, the findings highlighted that CEA (OR = 1.924), T category (OR = 1.714) were significant prognostic factors for GC cases with stage of pN0, suggesting that these two factors were closely associated with the survival and multicollinearity might exist between them. The view was in accordance with many scholars<sup>[2]</sup> who had found that elevated serum CEA was involved in tumor depth (T category), lymphatic metastasis, and TNM stage, and liver metastasis<sup>[26,27]</sup>, and it was an independent prognostic risk factor.

Further analysis show that T category (OR = 1.962) was an objective hazard factor in the CEA-high group for pN0 GC patients. It was found consistently in the aforementioned studies, which were at the root of the CEA was substituted for T category in the current TNM staging system to come up with a modified staging system.

To our knowledge, this analysis is one of the relatively few that have been reported. However, there were several limitations inherent in this study. First, it was intended to serve as a retrospective study and a clinical bias could potentially occur. Also, follow-ups were achieved through phone calls and a recall bias existed.

In spite of the assistance brought by the optimal cut-off value for serum CEA level in clinical practice, there exists limitations. Firstly, the possibility of patient selection introducing bias was inherent, which can affect surgical outcomes. Secondly, the number of CEA-high patients was relatively small, which reducing the intensity of statistics. What's more, the data come from a single hospital, so the results may not represent the Chinese population well.

In conclusion, the CEA, categorized by cut-off points of 30.02 ng/mL, could produce the best prognostic discriminatory ability, and increased pretreatment CEA levels nearly doubled the risk of mortality in pN0 GC patients.

## COMMENTS

### Background

The survival value of carcinoembryonic antigen (CEA) for gastric cancer patients remains obscure. This study aims at assessing whether elevated serum CEA is a partner in the inferior prognosis for pathological lymph node-negative (pN0) patients.

## Research frontiers

CEA, an acknowledged as an intracellular adhesion molecule, is one of the most common markers used in GC. Numerous studies have been in favour of preoperative CEA levels as biomarker for the survival of GC. However, other studies have reported the opposite results. The X-tile plot has been recently elaborated to establish cut-off point for biomarkers in cancer. we performed a large sample retrospective study and reset an optimal cut-off value.

## Innovations and breakthrough

The authors found that the CEA, categorized by cut-off points of 30.02 ng/mL could develop the best prognostic discriminatory ability and predictive accuracy for staging pN0 GC patients. Increased pretreatment serum CEA levels (> 30.02 ng/mL) nearly doubled the risk of mortality in in pN0 GC patients.

## Applications

This study results suggest that those pretreatment serum CEA levels over 30.02 ng/mL on behalf of worse characteristics and unfavourable tumor behavior.

## Peer-review

The authors examined subjects with pretreatment serum CEA > 30.02 ng/mL have a poor prognosis in terms of survival, vascular invasion and transmural invasion. Clinicopathologic factors affecting outcome were evaluated. Their results show that those pretreatment serum CEA levels over 30.02 ng/mL on behalf of worse characteristics and unfavourable tumor behavior, and a poor prognosis for a nearly doubled risk of mortality in GC patients.

## REFERENCES

- Hartgrink HH, Jansen EP, van Grieken NC, van de Velde CJ. Gastric cancer. *Lancet* 2009; **374**: 477-490 [PMID: 19625077 DOI: 10.1016/S0140-6736(09)60617-6]
- Tsai YC, Hsiao WH, Lin SH, Yang HB, Cheng HC, Chang WL, Lu CC, Sheu BS. Genomic single nucleotide polymorphisms in the offspring of gastric cancer patients predispose to spasmodic polypeptide-expressing metaplasia after H. pylori infection. *J Biomed Sci* 2015; **22**: 16 [PMID: 25884934 DOI: 10.1186/s12929-015-0121-7]
- Washington K. 7th edition of the AJCC cancer staging manual: stomach. *Ann Surg Oncol* 2010; **17**: 3077-3079 [PMID: 20882416 DOI: 10.1245/s10434-010-1362-z]
- Bagaria B, Sood S, Sharma R, Lalwani S. Comparative study of CEA and CA19-9 in esophageal, gastric and colon cancers individually and in combination (ROC curve analysis). *Cancer Biol Med* 2013; **10**: 148-157 [PMID: 24379990 DOI: 10.7497/j.issn.2095-3941.2013.03.005]
- Shimizu K, Ueda Y, Yamagishi H. Titration of serum p53 antibodies in patients with gastric cancer: a single-institute study of 40 patients. *Gastric Cancer* 2005; **8**: 214-219 [PMID: 16328595 DOI: 10.1007/s10120-005-0337-4]
- Mihmanli M, Dilege E, Demir U, Coskun H, Eroglu T, Uysalol MD. The use of tumor markers as predictors of prognosis in gastric cancer. *Hepatogastroenterology* 2004; **51**: 1544-1547 [PMID: 15362797]
- Tachibana M, Takemoto Y, Nakashima Y, Kinugasa S, Kotoh T, Dhar DK, Kohno H, Nagasue N. Serum carcinoembryonic antigen as a prognostic factor in resectable gastric cancer. *J Am Coll Surg* 1998; **187**: 64-68 [PMID: 9660027 DOI: 10.1016/S1072-7515(98)00133-1]
- Tian SB, Yu JC, Kang WM, Ma ZQ, Ye X, Cao ZJ, Yan C. Combined detection of CEA, CA 19-9, CA 242 and CA 50 in the diagnosis and prognosis of resectable gastric cancer. *Asian Pac J Cancer Prev* 2014; **15**: 6295-6300 [PMID: 25124614 DOI: 10.7314/APJCP.2014.15.15.6295]
- Ychou M, Duffour J, Kramar A, Gourgou S, Grenier J. Clinical significance and prognostic value of CA72-4 compared with CEA and CA19-9 in patients with gastric cancer. *Dis Markers* 2000; **16**: 105-110 [PMID: 11381189 DOI: 10.1155/2000/595492]
- Ucar E, Semerci E, Ustun H, Yetim T, Huzmeli C, Gullu M. Prognostic value of preoperative CEA, CA 19-9, CA 72-4, and AFP levels in gastric cancer. *Adv Ther* 2008; **25**: 1075-1084 [PMID: 18821070 DOI: 10.1007/s12325-008-0100-4]
- Galizia G, Lieto E, De Vita F, Romano C, Orditura M, Castellano P, Imperatore V, Infusino S, Catalano G, Pignatelli C. Circulating levels of interleukin-10 and interleukin-6 in gastric and colon cancer patients before and after surgery: relationship with radicality and outcome. *J Interferon Cytokine Res* 2002; **22**: 473-482 [PMID: 12034030 DOI: 10.1089/10799900252952262]
- Ikeguchi M, Hatada T, Yamamoto M, Miyake T, Matsunaga T, Fukumoto Y, Yamada Y, Fukuda K, Saito H, Tatebe S. Serum interleukin-6 and -10 levels in patients with gastric cancer. *Gastric Cancer* 2009; **12**: 95-100 [PMID: 19562463 DOI: 10.1007/s10120-009-0509-8]
- Wang Z, Si X, Xu A, Meng X, Gao S, Qi Y, Zhu L, Li T, Li W, Dong L. Activation of STAT3 in human gastric cancer cells via interleukin (IL)-6-type cytokine signaling correlates with clinical implications. *PLoS One* 2013; **8**: e75788 [PMID: 24116074 DOI: 10.1371/journal.pone.0075788]
- Sano T. [Evaluation of the gastric cancer treatment guidelines of the Japanese Gastric Cancer Association]. *Gan To Kagaku Ryoho* 2010; **37**: 582-586 [PMID: 20414011]
- Deng K, Yang L, Hu B, Wu H, Zhu H, Tang C. The prognostic significance of pretreatment serum CEA levels in gastric cancer: a meta-analysis including 14651 patients. *PLoS One* 2015; **10**: e0124151 [PMID: 25879931 DOI: 10.1371/journal.pone.0124151]
- Feng F, Sun L, Liu Z, Liu S, Zheng G, Xu G, Guo M, Lian X, Fan D, Zhang H. Prognostic values of normal preoperative serum cancer markers for gastric cancer. *Oncotarget* 2016; **7**: 58459-58469 [PMID: 27533455 DOI: 10.18632/oncotarget.11248]
- Huang ZB, Zhou X, Xu J, Du YP, Zhu W, Wang J, Shu YQ, Liu P. Prognostic value of preoperative serum tumor markers in gastric cancer. *World J Clin Oncol* 2014; **5**: 170-176 [PMID: 24829865 DOI: 10.5306/wjco.v5.i2.170]
- Wu YC, Lv P, Han J, Yu JL, Zhu X, Hong LL, Zhu WY, Yu QM, Wang XB, Li P, Ling ZQ. Enhanced serum methylated p16 DNAs is associated with the progression of gastric cancer. *Int J Clin Exp Pathol* 2014; **7**: 1553-1562 [PMID: 24817951]
- Dilege E, Mihmanli M, Demir U, Ozer K, Bostanci O, Kaya C, Aksakal O, Sakiz D. Prognostic value of preoperative CEA and CA 19-9 levels in resectable gastric cancer. *Hepatogastroenterology* 2010; **57**: 674-677 [PMID: 20698248]
- Chen S, Chen YB, Li YF, Feng XY, Zhou ZW, Yuan XH, Qian CN. Normal carcinoembryonic antigen indicates benefit from perioperative chemotherapy to gastric carcinoma patients. *World J Gastroenterol* 2012; **18**: 3910-3916 [PMID: 22876045 DOI: 10.3748/wjg.v18.i29.3910]
- Raza Y, Khan A, Khan AI, Khan S, Akhter S, Mubarak M, Ahmed A, Kazmi SU. Combination of Interleukin 1 Polymorphism and Helicobacter pylori Infection: an Increased Risk of Gastric Cancer in Pakistani Population. *Pathol Oncol Res* 2017; **23**: 1-8 [PMID: 28110439 DOI: 10.1007/s12253-017-0191-9]
- Hua RX, Zhuo ZJ, Zhu J, Jiang DH, Xue WQ, Zhang SD, Zhang JB, Li XZ, Zhang PF, Jia WH, Shen GP, He J. Association between genetic variants in the XPG gene and gastric cancer risk in a Southern Chinese population. *Aging (Albany NY)* 2016; **8**: 3311-3320 [PMID: 27929383 DOI: 10.18632/aging.101119]
- Petrovich I, Ford JM. Genetic predisposition to gastric cancer. *Semin Oncol* 2016; **43**: 554-559 [PMID: 27899187 DOI: 10.1053/j.seminoncol.2016.08.006]
- Choi YJ, Kim N. Gastric cancer and family history. *Korean J Intern Med* 2016; **31**: 1042-1053 [PMID: 27809451 DOI: 10.3904/kjim.2016.147]
- Park SH, Ku KB, Chung HY, Yu W. Prognostic significance of serum and tissue carcinoembryonic antigen in patients with gastric adenocarcinomas. *Cancer Res Treat* 2008; **40**: 16-21 [PMID: 19688060 DOI: 10.4143/crt.2008.40.1.16]

- 26 **Wada N**, Kurokawa Y, Miyazaki Y, Makino T, Takahashi T, Yamasaki M, Nakajima K, Takiguchi S, Mori M, Doki Y. The characteristics of the serum carcinoembryonic antigen and carbohydrate antigen 19-9 levels in gastric cancer cases. *Surg Today* 2017; **47**: 227-232 [PMID: 27566604 DOI: 10.1007/s00595-016-1408-3]
- 27 **Chae HD**, Kim IH. Prognostic significance of CEA expression by RT-PCR in peritoneal wash from patients with gastric cancer: result of a 5-year follow-up after curative resection. *Scand J Gastroenterol* 2016; **51**: 956-960 [PMID: 27162096 DOI: 10.3109/00365521.2016.1172339]

**P- Reviewer:** Eleftheriadis NP, Ierardi E **S- Editor:** Gong ZM  
**L- Editor:** A **E- Editor:** Ma YJ







Published by **Baishideng Publishing Group Inc**  
7901 Stoneridge Drive, Suite 501, Pleasanton, CA 94588, USA  
Telephone: +1-925-223-8242  
Fax: +1-925-223-8243  
E-mail: [bpgoffice@wjgnet.com](mailto:bpgoffice@wjgnet.com)  
Help Desk: <http://www.f6publishing.com/helpdesk>  
<http://www.wjgnet.com>



ISSN 1007-9327



9 771007 932045