

World Journal of *Gastroenterology*

World J Gastroenterol 2017 October 21; 23(39): 7059-7200



**REVIEW**

- 7059** Less common etiologies of exocrine pancreatic insufficiency

Singh VK, Haupt ME, Geller DE, Hall JA, Quintana Diez PM

MINIREVIEWS

- 7077** Radiofrequency ablation for hepatic hemangiomas: A consensus from a Chinese panel of experts

Gao J, Fan RF, Yang JY, Cui Y, Ji JS, Ma KS, Li XL, Zhang L, Xu CL, Kong XL, Ke S, Ding XM, Wang SH, Yang MM, Song JJ, Zhai B, Nin CM, Guo SG, Xin ZH, Lu J, Dong YH, Zhu HQ, Sun WB

ORIGINAL ARTICLE**Basic Study**

- 7087** Detection of *KRAS* G12D in colorectal cancer stool by droplet digital PCR

Olmedillas-López S, Lévano-Linares DC, Aúz Alexandre CL, Vega-Clemente L, León Sánchez E, Villagrasa A, Ruiz-Tovar J, García-Arranz M, García-Olmo D

- 7098** Optimal timing for the oral administration of Da-Cheng-Qi decoction based on the pharmacokinetic and pharmacodynamic targeting of the pancreas in rats with acute pancreatitis

Zhang YM, Zhu L, Zhao XL, Chen H, Kang HX, Zhao JL, Wan MH, Li J, Zhu L, Tang WF

Retrospective Study

- 7110** Short- and long-term results of endoscopic ultrasound-guided transmural drainage for pancreatic pseudocysts and walled-off necrosis

Watanabe Y, Mikata R, Yasui S, Ohyama H, Sugiyama H, Sakai Y, Tsuyuguchi T, Kato N

- 7119** Laparoscopic finding of a hepatic subcapsular spider-like telangiectasis sign in biliary atresia

Zhou Y, Jiang M, Tang ST, Yang L, Zhang X, Yang DH, Xiong M, Li S, Cao GQ, Wang Y

- 7129** Digestive tract reconstruction using isoperistaltic jejunum-later-cut overlap method after totally laparoscopic total gastrectomy for gastric cancer: Short-term outcomes and impact on quality of life

Huang ZN, Huang CM, Zheng CH, Li P, Xie JW, Wang JB, Lin JX, Lu J, Chen QY, Cao LL, Lin M, Tu RH, Lin JL

Observational Study

- 7139** Adalimumab efficacy in enteropathic spondyloarthritis: A 12-mo observational multidisciplinary study

Luchetti MM, Benfaremo D, Ciccio F, Bolognini L, Ciferri M, Farinelli A, Rossini M, Mosca P, Triolo G, Gabrielli A

- 7150** Presence of columnar-lined esophagus is negatively associated with the presence of esophageal varices in Japanese alcoholic men
Yokoyama A, Hirata K, Nakamura R, Omori T, Mizukami T, Aida J, Maruyama K, Yokoyama T
- 7160** Characteristics and outcomes of cholangiocarcinoma by region in Thailand: A nationwide study
Chaiteerakij R, Pan-ngum W, Poovorawan K, Soonthornworasiri N, Treeprasertsuk S, Phaosawasdi K
- 7168** Expression of annexin A5 in serum and tumor tissue of patients with colon cancer and its clinical significance
Sun CB, Zhao AY, Ji S, Han XQ, Sun ZC, Wang MC, Zheng FC

CASE REPORT

- 7174** Faecal microbiota transplantation in patients with *Clostridium difficile* and significant comorbidities as well as in patients with new indications: A case series
Lahtinen P, Mattila E, Anttila VJ, Tillonen J, Teittinen M, Nevalainen P, Salminen S, Satokari R, Arkkila P
- 7185** Oval mucosal opening bloc biopsy after incision and widening by ring thread traction for submucosal tumor
Mori H, Kobara H, Guan Y, Goda Y, Kobayashi N, Nishiyama N, Masaki T
- 7191** Evidence from a familial case suggests maternal inheritance of primary biliary cholangitis
Shin S, Moh IH, Woo YS, Jung SW, Kim JB, Park JW, Suk KT, Kim HS, Hong M, Park SH, Lee MS

LETTERS TO THE EDITOR

- 7198** Duplicate publication bias weakens the validity of meta-analysis of immunosuppression after transplantation
Fairfield CJ, Harrison EM, Wigmore SJ

ABOUT COVER

Editorial board member of *World Journal of Gastroenterology*, İlhami Yüksel, MD, Associate Professor, Gastroenterology, Yildirim Beyazıt University School of Medicine, Ankara 06100, Turkey

AIMS AND SCOPE

World Journal of Gastroenterology (*World J Gastroenterol*, *WJG*, print ISSN 1007-9327, online ISSN 2219-2840, DOI: 10.3748) is a peer-reviewed open access journal. *WJG* was established on October 1, 1995. It is published weekly on the 7th, 14th, 21st, and 28th each month. The *WJG* Editorial Board consists of 1375 experts in gastroenterology and hepatology from 68 countries.

The primary task of *WJG* is to rapidly publish high-quality original articles, reviews, and commentaries in the fields of gastroenterology, hepatology, gastrointestinal endoscopy, gastrointestinal surgery, hepatobiliary surgery, gastrointestinal oncology, gastrointestinal radiation oncology, gastrointestinal imaging, gastrointestinal interventional therapy, gastrointestinal infectious diseases, gastrointestinal pharmacology, gastrointestinal pathophysiology, gastrointestinal pathology, evidence-based medicine in gastroenterology, pancreatology, gastrointestinal laboratory medicine, gastrointestinal molecular biology, gastrointestinal immunology, gastrointestinal microbiology, gastrointestinal genetics, gastrointestinal translational medicine, gastrointestinal diagnostics, and gastrointestinal therapeutics. *WJG* is dedicated to become an influential and prestigious journal in gastroenterology and hepatology, to promote the development of above disciplines, and to improve the diagnostic and therapeutic skill and expertise of clinicians.

INDEXING/ABSTRACTING

World Journal of Gastroenterology (*WJG*) is now indexed in Current Contents[®]/Clinical Medicine, Science Citation Index Expanded (also known as SciSearch[®]), Journal Citation Reports[®], Index Medicus, MEDLINE, PubMed, PubMed Central and Directory of Open Access Journals. The 2017 edition of Journal Citation Reports[®] cites the 2016 impact factor for *WJG* as 3.365 (5-year impact factor: 3.176), ranking *WJG* as 29th among 79 journals in gastroenterology and hepatology (quartile in category Q2).

FLYLEAF

I-IX Editorial Board

EDITORS FOR THIS ISSUE

Responsible Assistant Editor: *Xiang Li*
Responsible Electronic Editor: *Yan Huang*
Proofing Editor-in-Chief: *Lian-Sheng Ma*

Responsible Science Editor: *Ze-Mao Gong*
Proofing Editorial Office Director: *Jin-Lei Wang*

NAME OF JOURNAL
World Journal of Gastroenterology

ISSN
ISSN 1007-9327 (print)
ISSN 2219-2840 (online)

LAUNCH DATE
October 1, 1995

FREQUENCY
Weekly

EDITORS-IN-CHIEF
Damian Garcia-Olmo, MD, PhD, Doctor, Professor, Surgeon, Department of Surgery, Universidad Autonoma de Madrid; Department of General Surgery, Fundacion Jimenez Diaz University Hospital, Madrid 28040, Spain

Stephen C Strom, PhD, Professor, Department of Laboratory Medicine, Division of Pathology, Karolinska Institutet, Stockholm 141-86, Sweden

Andrzej S Tarnawski, MD, PhD, DSc (Med), Professor of Medicine, Chief Gastroenterology, VA Long Beach Health Care System, University of California, Irvine, CA, 5901 E. Seventh Str., Long Beach,

CA 90822, United States

EDITORIAL BOARD MEMBERS
All editorial board members resources online at <http://www.wjgnet.com/1007-9327/editorialboard.htm>

EDITORIAL OFFICE
Jin-Lei Wang, Director
Yuan Qi, Vice Director
Ze-Mao Gong, Vice Director
World Journal of Gastroenterology
Baishideng Publishing Group Inc
7901 Stoneridge Drive, Suite 501,
Pleasanton, CA 94588, USA
Telephone: +1-925-2238242
Fax: +1-925-2238243
E-mail: editorialoffice@wjgnet.com
Help Desk: <http://www.f6publishing.com/helpdesk>
<http://www.wjgnet.com>

PUBLISHER
Baishideng Publishing Group Inc
7901 Stoneridge Drive, Suite 501,
Pleasanton, CA 94588, USA
Telephone: +1-925-2238242
Fax: +1-925-2238243
E-mail: bpoffice@wjgnet.com
Help Desk: <http://www.f6publishing.com/helpdesk>

<http://www.wjgnet.com>

PUBLICATION DATE
October 21, 2017

COPYRIGHT
© 2017 Baishideng Publishing Group Inc. Articles published by this Open-Access journal are distributed under the terms of the Creative Commons Attribution Non-commercial License, which permits use, distribution, and reproduction in any medium, provided the original work is properly cited, the use is non commercial and is otherwise in compliance with the license.

SPECIAL STATEMENT
All articles published in journals owned by the Baishideng Publishing Group (BPG) represent the views and opinions of their authors, and not the views, opinions or policies of the BPG, except where otherwise explicitly indicated.

INSTRUCTIONS TO AUTHORS
Full instructions are available online at <http://www.wjgnet.com/bpg/gerinfo/204>

ONLINE SUBMISSION
<http://www.f6publishing.com>

Oval mucosal opening bloc biopsy after incision and widening by ring thread traction for submucosal tumor

Hirohito Mori, Hideki Kobara, Yu Guan, Yasuhiro Goda, Nobuya Kobayashi, Noriko Nishiyama, Tsutomu Masaki

Hirohito Mori, Hideki Kobara, Yasuhiro Goda, Nobuya Kobayashi, Noriko Nishiyama, Tsutomu Masaki, Department of Gastroenterology and Neurology, Kagawa University, Kita, Kagawa 761-0793, Japan

Yu Guan, Departments of Pharmacology, Kagawa University, Kita, Kagawa 761-0793, Japan

ORCID number: Hirohito Mori (0000-0002-1691-2085); Hideki Kobara (0000-0002-8508-827X); Yu Guan (0000-0002-1359-0308); Yasuhiro Goda (0000-0001-7374-0446); Nobuya Kobayashi (0000-0001-9950-3406); Noriko Nishiyama (0000-0003-3707-9317); Tsutomu Masaki (0000-0002-8425-0685).

Author contributions: Mori H was responsible for devising the research and writing the manuscript; Kobara H, Guan Y, Goda Y, Kobayashi N and Nishiyama N participated equally in the work; Masaki T provided a critical revision of the manuscript for intellectual content and was responsible for final approval of the manuscript.

Institutional review board statement: This study was approved by the ethics committees of Kagawa University Hospital (approval No. 51), and it is in accordance with the Declaration of Helsinki.

Informed consent statement: Patients were provided verbal and written informed consent.

Conflict-of-interest statement: All authors declare that they have no conflicts of interest, and no corporate financing was received.

Open-Access: This article is an open-access article which was selected by an in-house editor and fully peer-reviewed by external reviewers. It is distributed in accordance with the Creative Commons Attribution Non Commercial (CC BY-NC 4.0) license, which permits others to distribute, remix, adapt, build upon this work non-commercially, and license their derivative works on different terms, provided the original work is properly cited and the use is non-commercial. See: <http://creativecommons.org/licenses/by-nc/4.0/>

[licenses/by-nc/4.0/](http://creativecommons.org/licenses/by-nc/4.0/)

Manuscript source: Unsolicited manuscript

Correspondence to: Hirohito Mori, MD, PhD, Doctor, Lecturer, Department of Gastroenterology and Neurology, Kagawa University, 1750-1 Ikenobe, Miki, Kita, Kagawa 761-0793, Japan. hiro4884@med.kagawa-u.ac.jp
Telephone: +81-87-8912156
Fax: +81-87-8912158

Received: June 28, 2017

Peer-review started: June 28, 2017

First decision: July 25, 2017

Revised: August 15, 2017

Accepted: September 5, 2017

Article in press: September 5, 2017

Published online: October 21, 2017

Abstract

Gastric submucosal tumors (SMTs) less than 2 cm are generally considered benign neoplasms, and endoscopic observation is recommended, but SMTs over 2 cm, 40% of which are gastrointestinal stromal tumors (GISTs), have malignant potential. Although the Japanese Guidelines for GIST recommend partial surgical resection for GIST over 2 cm with malignant potential as well as en bloc large tissue sample to obtain appropriate and large specimens of SMTs, several reports have been published on tissue sampling of SMTs, such as with endoscopic ultrasound sound fine needle aspiration, submucosal tunneling bloc biopsy, and the combination of bite biopsy and endoscopic mucosal resection. Because a simpler, more accurate method is needed for appropriate treatment, we developed oval mucosal opening bloc biopsy after incision and widening by ring thread traction for submucosal tumor (OMOB) approach. OMOB was

simple and enabled us to obtain large samples under direct procedure view as well as allowed us to restore to original mucosa.

Key words: Gastric submucosal tumors; Gastrointestinal stromal tumor; Reversible opening biopsy; Endoscopic ultrasonography; Large sample

© The Author(s) 2017. Published by Baishideng Publishing Group Inc. All rights reserved.

Core tip: Gastric submucosal tumors (SMTs) less than 2 cm are generally considered benign neoplasms, and endoscopic observation is recommended, but SMTs over 2 cm, 40% of which are gastrointestinal stromal tumors (GISTs), have malignant potential. Although partial surgical resection for GIST over 2 cm with malignant potential as well as en bloc large tissue sample to obtain appropriate and large specimen of SMTs is recommended, several reports have been published on tissue sampling of SMTs. Because a simpler, more accurate method is needed for appropriate treatment, we developed oval mucosal opening bloc biopsy after incision and widening by ring thread traction approach.

Mori H, Kobara H, Guan Y, Goda Y, Kobayashi N, Nishiyama N, Masaki T. Oval mucosal opening bloc biopsy after incision and widening by ring thread traction for submucosal tumor. *World J Gastroenterol* 2017; 23(39): 7185-7190 Available from: URL: <http://www.wjnet.com/1007-9327/full/v23/i39/7185.htm> DOI: <http://dx.doi.org/10.3748/wjg.v23.i39.7185>

INTRODUCTION

Gastric submucosal tumors (SMTs) less than 2 cm are generally considered benign neoplasms, and endoscopic observation is recommended^[1]; however, SMTs over 2 cm, 40% of which are gastrointestinal stromal tumors (GISTs), have malignant potential^[2]. The Japanese Guidelines for GIST over 2 cm with malignant potential recommend removal by partial surgical resection as well as en bloc large tissue sample collection to obtain an accurate diagnosis before surgery^[3]. To obtain appropriate and large specimens of SMTs and diagnose them accurately, there have been several reports related to tissue sampling of SMTs, such as endoscopic ultrasound sound fine needle aspiration (EUS-FNA)^[4,5], submucosal tunneling bloc biopsy (STB)^[6], and the combination of bite biopsy and endoscopic mucosal resection (CB-EMR) by which the crown of SMTs was partially resected by EMR^[7]. Because a simpler, more accurate method is needed for appropriate treatment, we developed oval mucosal opening bloc biopsy after incision and widening by ring thread traction for submucosal tumor (OMOB)

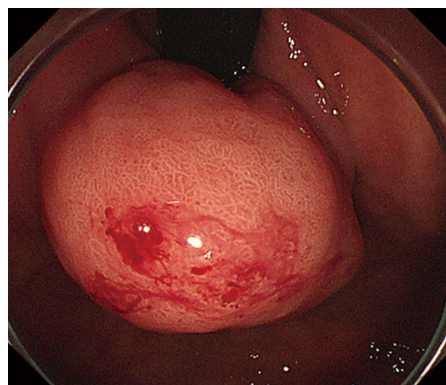


Figure 1 Endoscopic findings of gastric submucosal tumor. A gastric submucosal tumor (30 mm in diameter) is shown in the fornix of the stomach.

approach.

CASE REPORT

A forty-seven-year-old woman was diagnosed with a gastric SMT that was 30 mm in diameter in the fornix (Figure 1). As the tumor located in the fornix where EUS-FNA was unable to puncture its needle due to maximum bended endoscope position and STB was also difficult to create submucosal tunnel under maximum bended endoscope position, it was difficult to obtain sufficient tissue sample of this tumor (Figures 1 and 2A). A 5-10 mm straight incision was made on the top of the SMT by Dual knife (KD-650L, OLYMPUS Co., Tokyo, Japan) (Figures 2B and 3). After a 5-mm ring-shaped thread was delivered by grasping forceps and clipped on the left side mucosa of the incision edge (Figure 2C), second clip was hooked the ring-shaped thread (Figure 2D) and moved to be tied up the left gastric wall.

The same procedures were performed on the right side of the incision mucosa (Figure 4) making a straight incision like an oval-shaped incision (Figure 5). With more insufflation, both ring threads expanded the oval incision to a round-shaped incision from which the tumor capsule was clearly recognized (Figure 6). An approximately 5 mm incision of the tumor capsule by Dual knife made it possible to confirm the tumor itself which had abundant tumor vessels (Figures 2E and 6). A 5-mm piece of tumor tissue was obtained by cutting the tumor surface with a Dual knife. After both sides of the ring threads were detached, the opened mucosa was closed by hemoclips to restore it back to the original mucosa (Figures 2F and 7). The total procedure time was only 10 min, and there were no complications, such as bleeding or perforation. The histological result was gastrointestinal stromal tumor. Three weeks after this new bloc biopsy, the incised mucosa was completely recovered with a linear scar. Laparoscopy and endoscopy cooperative

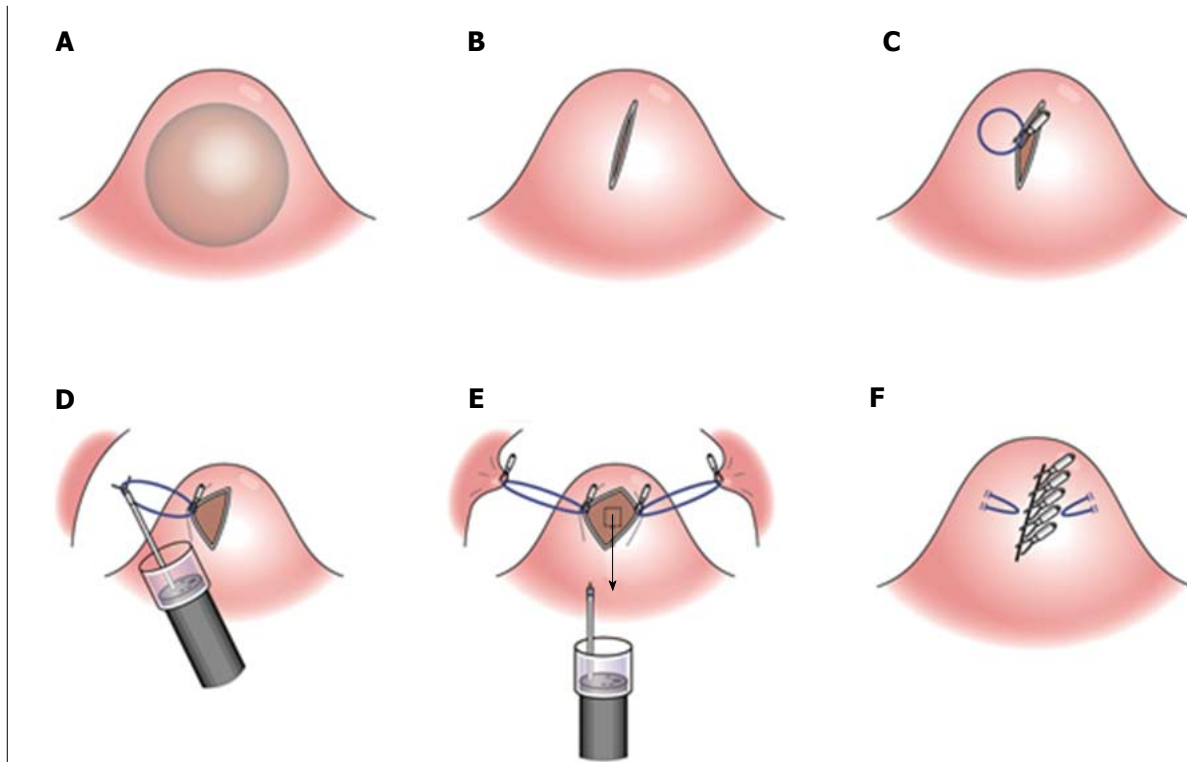


Figure 2 Oval mucosal opening bloc biopsy after incision and widening by ring thread traction. A: A gastric submucosal tumor (SMT) (30 mm in diameter) is shown in the fornix of the stomach; B: A 5-10 mm incision on the top of SMT was made; C: After a 5-mm ring-shaped thread was delivered by grasping forceps; D: Second clip was hooked the ring-shaped thread and moved to be tied up the left gastric wall; E: The same procedures were performed on the right side of the incision mucosa and made a straight incision like an oval-shaped incision; F: After both sides of the ring threads were detached, the opened mucosa was closed by hemoclips to restore it back to the original mucosa.

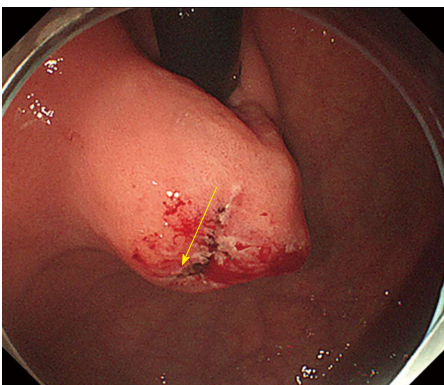


Figure 3 Incision at the top of the submucosal tumor. As endoscopic ultrasound sound fine needle aspiration and submucosal tunneling bloc biopsy were impossible due to the tumor's location, a 5-10 mm incision on the top of submucosal tumor was made (yellow arrow).

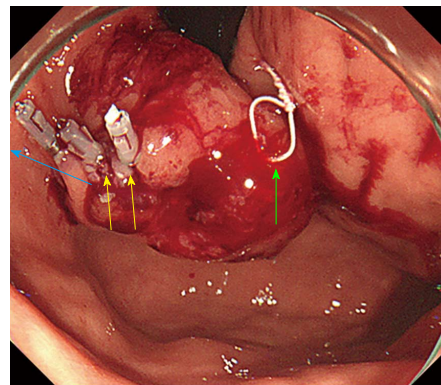


Figure 4 Ring-shaped thread counter traction. After clipping the 5-mm ring-shaped thread on the left side mucosa of the incision edge (yellow arrows), the other side of this ring thread was hooked and pulled to the posterior wall of the stomach (blue arrow). A 2nd white ring thread was placed on the other side of the incision edge (green arrow).

surgery (LECS) was successfully performed, and the histological finding of the GIST was low risk in accordance with Fletcher's classification. An endoscopic image revealed that straight incision on the top of the SMT was completely scarred and closed (yellow ring) (Figure 8) when laparoscopy and endoscopy cooperative surgery (LECS) was performed six week

after oval mucosal opening bloc biopsy.

DISCUSSION

The natural history of 2-5 cm GISTs is unknown. In the Japanese Guidelines of GIST, accurate diagnosis, including the histological grade based on a sufficient

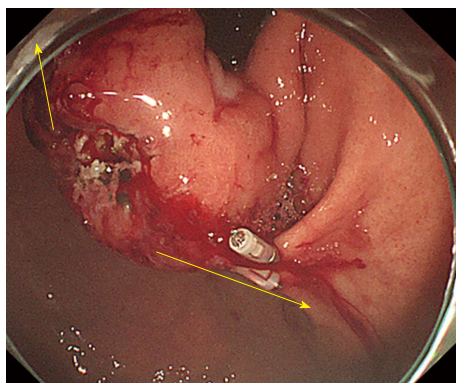


Figure 5 Oval mucosal opening after incision and widening by ring thread traction. The same procedures were performed on both sides of the incision mucosa with a straight incision to an oval shaped incision (yellow arrows).

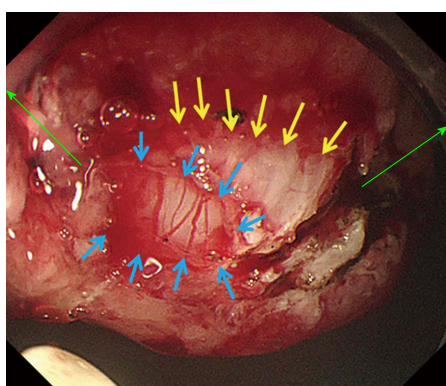


Figure 6 Direct view of capsule and abundant vessels of gastrointestinal stromal tumors. With more insufflation, both ring threads expanded the oval incision to a round shaped incision (green arrows) from which the tumor capsule was clearly recognized. An approximately 7-mm cut of the tumor capsule (yellow arrows) by Dual knife made it possible to confirm the tumor (blue arrows) with abundant tumor vessels.

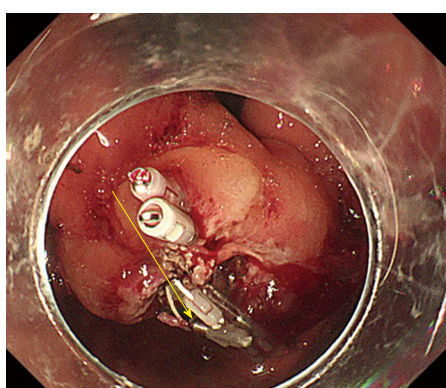


Figure 7 Reversible mucosa closure by hemoclips. After both sides of the ring threads were detached, the opened mucosa was closed by hemoclips to restore it back to the original mucosa (yellow arrow).

tissue sample, is recommended for GIST less than 2 cm, which is growing rapidly, or 2-5 cm GIST rather than endoscopic observation alone^[8].

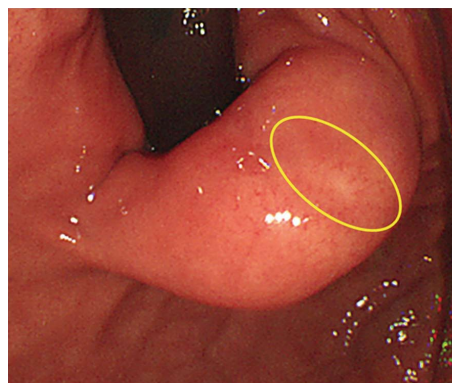


Figure 8 A mucosal incision six week after oval mucosal opening bloc biopsy. An endoscopic image revealed that straight incision on the top of the submucosal tumor was completely scarred and closed (yellow ring) when laparoscopy and endoscopy cooperative surgery was performed six week after oval mucosal opening bloc biopsy.

EUS-FNA is very useful for accurate diagnosis for SMTs since it was reported in 1992^[9]. Its diagnostic sensitivity for GIST is very high at approximately 70% and the specificity is approximately 85%^[10]. On the other hand, EUS-FNA does not always obtain sufficient tissue by needle sample for one of the grading factors of malignancy, such as the mitotic count under a 50 high power microscope field. The diagnostic rate for EUS-FNA was approximately 60% as the obtained samples were too small to pathologically diagnose the mitotic counts^[11]. The combination of bite biopsy and endoscopic mucosal resection (CB-EMR) using a snare to cut the top of SMTs enabled us to obtain a large bloc specimen. However, the bleeding rate was very high at approximately 50%-60% from the snare resection site^[12]. Bleeding after snare resection occurred due to a large mucosal defect at approximately 15-20 mm in diameter. Compared to CB-EMR, OMOB enable us to perform en bloc large tissue sampling without complications, such as bleeding, for GIST with rich vessels. OMOB consists of a 1-cm linear incision to round shaped excision using ring threads that expand with insufflation. After obtaining large bloc tissue, coagulation of bleeding vessels is performed followed by closure of the opening mucosa. Closure and recovery of mucosal incision is an important point of OMOB. STB using the ESD technique is another way to obtain a large tissue sample of GIST. As STB was safely performed using flexible endoscopic knives, only ESD experts could perform STB. It is difficult for ordinary endoscopists to perform STB^[13], because making appropriate size and location of mucosal incision suitable for creating submucosal tunnel was very difficult for ESD beginner. And creating submucosal tunnel to correct direction and adjusting correct depth of submucosal dissection within the submucosal tunnel were more difficult than conventional gastric

ESD. Another disadvantage of STB is the creation of a submucosal tunnel that leaves an extra 1-cm tunnel scar outside of the GIST. This extra linear scar makes the surgical margin of LECS larger than that of OMOB.

In conclusion, OMOB was simple and enabled us to obtain a large sample under the direct procedure view; it also allowed us to restore to the original mucosa.

COMMENTS

Case characteristics

A forty-seven-year-old woman was diagnosed with a gastric submucosal tumor (SMT) that was 30 mm in diameter in the fornix.

Clinical diagnosis

The tumor located in the fornix was considered as gastric submucosal tumor.

Differential diagnosis

Gastrointestinal stromal tumor (GIST), leiomyoma, schwannoma, leiomyosarcoma, malignant lymphoma, ectopic pancreas and lipoma.

Laboratory diagnosis

All labs were within normal limits.

Imaging diagnosis

Esophagogastroduodenoscopy showed gastric SMT 30 mm in diameter in the fornix.

Pathological diagnosis

The histopathological finding of the SMT was low risk GIST in accordance with Fletcher's classification.

Treatment

Complete surgical excision of lesion.

Related reports

Several reports have been published on tissue sampling of SMTs, such as with endoscopic ultrasound sound fine needle (EUS-FNA) aspiration, submucosal tunneling bloc biopsy, and the combination of bite biopsy and endoscopic mucosal resection.

Term explanation

Oval mucosal opening bloc biopsy by ring thread traction for submucosal tumor is new method for diagnosis of gastric SMT.

Experiences and lessons

Development of oval mucosal opening bloc biopsy after incision and widening by ring thread traction for submucosal tumor (OMOB) approach was useful for simpler, more accurate method for appropriate treatment of gastric SMT.

Peer-review

This case report presented a new biopsy method for GIST of the stomach. The authors demonstrate clearly that "reversible hinged double doors method" is useful to obtain large tissue sample. This method may certainly be of use for tough case even if we use EUS-FNA. This manuscript is well-written in terms of language and seems to be informative to the readers.

ACKNOWLEDGMENTS

We thank Professor Makoto Oryu for providing technical and editorial assistance.

REFERENCES

- 1 Seo SW, Hong SJ, Han JP, Choi MH, Song JY, Kim HK, Lee TH, Ko BM, Cho JY, Lee JS, Lee MS. Accuracy of a scoring system for the differential diagnosis of common gastric subepithelial tumors based on endoscopic ultrasonography. *J Dig Dis* 2013; **14**: 647-653 [PMID: 23992089 DOI: 10.1111/1751-2980.12099]
- 2 ESMO / European Sarcoma Network Working Group. Gastrointestinal stromal tumors: ESMO Clinical Practice Guidelines for diagnosis, treatment and follow-up. *Ann Oncol* 2012; **23** Suppl 7: vii49-vii55 [PMID: 22997454 DOI: 10.1093/annonc/mds252]
- 3 Nishida T, Blay JY, Hirota S, Kitagawa Y, Kang YK. The standard diagnosis, treatment, and follow-up of gastrointestinal stromal tumors based on guidelines. *Gastric Cancer* 2016; **19**: 3-14 [PMID: 26276366 DOI: 10.1007/s10120-015-0526-8]
- 4 Niimi K, Goto O, Kawakubo K, Nakai Y, Minatsuki C, Asada-Hirayama I, Mochizuki S, Ono S, Kodashima S, Yamamichi N, Isayama H, Fujishiro M, Koike K. Endoscopic ultrasound-guided fine-needle aspiration skill acquisition of gastrointestinal submucosal tumor by trainee endoscopists: A pilot study. *Endosc Ultrasound* 2016; **5**: 157-164 [PMID: 27386472 DOI: 10.4103/2303-9027.183970]
- 5 Hoda KM, Rodriguez SA, Faigel DO. EUS-guided sampling of suspected GI stromal tumors. *Gastrointest Endosc* 2009; **69**: 1218-1223 [PMID: 19394006 DOI: 10.1016/j.gie.2008.09.045]
- 6 Kobara H, Mori H, Rafiq K, Fujihara S, Nishiyama N, Chiyo T, Matsunaga T, Ayaki M, Yachida T, Kato K, Kamada H, Fujita K, Morishita A, Oryu M, Tsutsui K, Iwama H, Kushida Y, Haba R, Masaki T. Analysis of the amount of tissue sample necessary for mitotic count and Ki-67 index in gastrointestinal stromal tumor sampling. *Oncol Rep* 2015; **33**: 215-222 [PMID: 25405369 DOI: 10.3892/or.2014.3608]
- 7 Yokoyama T, Nakamura N, Kiyosawa K, Akamatsu T. A biopsy-negative esophageal cancer: diagnosis by combination of bite biopsy and endoscopic mucosal resection using a cap-fitted panendoscope (EMRC). *Endoscopy* 2001; **33**: 386 [PMID: 11315907 DOI: 10.1055/s-2001-13698]
- 8 Lee IL, Lin PY, Tung SY, Shen CH, Wei KL, Wu CS. Endoscopic submucosal dissection for the treatment of intraluminal gastric subepithelial tumors originating from the muscularis propria layer. *Endoscopy* 2006; **38**: 1024-1028 [PMID: 17058168 DOI: 10.1055/s-2006-944814]
- 9 Vilmann P, Jacobsen GK, Henriksen FW, Hancke S. Endoscopic ultrasonography with guided fine needle aspiration biopsy in pancreatic disease. *Gastrointest Endosc* 1992; **38**: 172-173 [PMID: 1568614 DOI: 10.1016/S0016-5107(92)70385-X]
- 10 Kim GH, Cho YK, Kim EY, Kim HK, Cho JW, Lee TH, Moon JS; Korean EUS Study Group. Comparison of 22-gauge aspiration needle with 22-gauge biopsy needle in endoscopic ultrasonography-guided subepithelial tumor sampling. *Scand J Gastroenterol* 2014; **49**: 347-354 [PMID: 24325591 DOI: 10.3109/00365521.2013.867361]
- 11 Levy MJ, Jondal ML, Clain J, Wiersema MJ. Preliminary experience with an EUS-guided trucut biopsy needle compared with EUS-guided FNA. *Gastrointest Endosc* 2003; **57**: 101-106 [PMID: 12518144 DOI: 10.1067/mge.2003.49]
- 12 Lee CK, Chung IK, Lee SH, Lee SH, Lee TH, Park SH, Kim HS, Kim SJ, Cho HD. Endoscopic partial resection with the unroofing technique for reliable tissue diagnosis of upper GI subepithelial tumors originating from the muscularis propria on EUS (with video). *Gastrointest Endosc* 2010; **71**: 188-194 [PMID: 19879567 DOI: 10.1016/j.gie.2009.07.029]
- 13 Kobara H, Mori H, Rafiq K, Fujihara S, Nishiyama N, Ayaki

M, Yachida T, Matsunaga T, Tani J, Miyoshi H, Yoneyama H, Morishita A, Oryu M, Iwama H, Masaki T. Submucosal tunneling

techniques: current perspectives. *Clin Exp Gastroenterol* 2014; 7: 67-74 [PMID: 24741323 DOI: 10.2147/CEG.S43139]

P- Reviewer: Braden B, Matsuda A, Sinagra E, Syam AFF, Velayos B
S- Editor: Ma YJ **L- Editor:** A **E- Editor:** Huang Y





Published by **Baishideng Publishing Group Inc**
7901 Stoneridge Drive, Suite 501, Pleasanton, CA 94588, USA
Telephone: +1-925-223-8242
Fax: +1-925-223-8243
E-mail: bpgooffice@wjgnet.com
Help Desk: <http://www.f6publishing.com/helpdesk>
<http://www.wjgnet.com>



ISSN 1007-9327



9 771007 932045