

# World Journal of *Gastroenterology*

*World J Gastroenterol* 2017 October 28; 23(40): 7201-7346



**MINIREVIEWS**

- 7201 Non-celiac gluten sensitivity: All wheat attack is not celiac

*Igbinedion SO, Ansari J, Vasikaran A, Gavins FN, Jordan P, Boktor M, Alexander JS*

**ORIGINAL ARTICLE****Basic Study**

- 7211 Glucagon-like peptide-2 modulates the nitrenergic neurotransmission in strips from the mouse gastric fundus

*Garella R, Idrizaj E, Traini C, Squecco R, Vannucchi MG, Baccari MC*

- 7221 Hypothermic machine perfusion with metformin-University of Wisconsin solution for *ex vivo* preservation of standard and marginal liver grafts in a rat model

*Chai YC, Dang GX, He HQ, Shi JH, Zhang HK, Zhang RT, Wang B, Hu LS, Lv Y*

- 7232 Relationship between autophagy and perineural invasion, clinicopathological features, and prognosis in pancreatic cancer

*Yang YH, Liu JB, Gui Y, Lei LL, Zhang SJ*

- 7242 Dachaihu decoction ameliorates pancreatic fibrosis by inhibiting macrophage infiltration in chronic pancreatitis

*Duan LF, Xu XF, Zhu LJ, Liu F, Zhang XQ, Wu N, Fan JW, Xin JQ, Zhang H*

- 7253 Prostaglandin E1 protects hepatocytes against endoplasmic reticulum stress-induced apoptosis *via* protein kinase A-dependent induction of glucose-regulated protein 78 expression

*Yang FW, Fu Y, Li Y, He YH, Mu MY, Liu QC, Long J, Lin SD*

**Retrospective Study**

- 7265 Genetic associations with adverse events from anti-tumor necrosis factor therapy in inflammatory bowel disease patients

*Lew D, Yoon SM, Yan X, Robbins L, Haritunians T, Liu Z, Li D, McGovern DPB*

- 7274 Clinical features of alcoholic hepatitis in latinos and caucasians: A single center experience

*Pinon-Gutierrez R, Durbin-Johnson B, Halsted CH, Medici V*

- 7283 Factors associated with carcinoid syndrome in patients with gastrointestinal neuroendocrine tumors

*Cai B, Broder MS, Chang E, Yan T, Metz DC*

- 7292** Clinical and pathological characterization of Epstein-Barr virus-associated gastric carcinomas in Portugal  
*Ribeiro J, Oliveira A, Malta M, Oliveira C, Silva F, Galaghar A, Afonso LP, Neves MC, Medeiros R, Pimentel-Nunes P, Sousa H*

- 7303** Modified model for end-stage liver disease improves short-term prognosis of hepatitis B virus-related acute-on-chronic liver failure  
*Chen W, You J, Chen J, Zheng Q, Jiang JJ, Zhu YY*

#### **Observational Study**

- 7310** Chronic opioids in gastroparesis: Relationship with gastrointestinal symptoms, healthcare utilization and employment  
*Jehangir A, Parkman HP*

- 7321** Medication beliefs predict medication adherence in ambulatory patients with decompensated cirrhosis  
*Hayward KL, Valery PC, Martin JH, Karmakar A, Patel PJ, Horsfall LU, Tallis CJ, Stuart KA, Wright PL, Smith DD, Irvine KM, Powell EE, Cottrell WN*

#### **CASE REPORT**

- 7332** Case of familial hyperlipoproteinemia type III hypertriglyceridemia induced acute pancreatitis: Role for outpatient apheresis maintenance therapy  
*Abou Saleh M, Mansoor E, Cooper GS*

- 7337** Rescue case of low birth weight infant with acute hepatic failure  
*Okada N, Sanada Y, Urahashi T, Ihara Y, Yamada N, Hirata Y, Katano T, Ushijima K, Otomo S, Fujita S, Mizuta K*

#### **LETTER TO THE EDITOR**

- 7343** *S*-Adenosyl-L-methionine towards hepatitis C virus expression: Need to consider *S*-Adenosyl-L-methionine's chemistry, physiology and pharmacokinetics  
*Tsikis D, Hanff E, Bollenbach A*

## Contents

*World Journal of Gastroenterology*  
Volume 23 Number 40 October 28, 2017

### ABOUT COVER

Editorial board member of *World Journal of Gastroenterology*, Marcos V Perini, MD, MSc, PhD, Senior Lecturer, Department of Surgery, University of Melbourne, Melbourne, Victoria 3084, Australia

### AIMS AND SCOPE

*World Journal of Gastroenterology* (*World J Gastroenterol*, *WJG*, print ISSN 1007-9327, online ISSN 2219-2840, DOI: 10.3748) is a peer-reviewed open access journal. *WJG* was established on October 1, 1995. It is published weekly on the 7<sup>th</sup>, 14<sup>th</sup>, 21<sup>st</sup>, and 28<sup>th</sup> each month. The *WJG* Editorial Board consists of 1375 experts in gastroenterology and hepatology from 68 countries.

The primary task of *WJG* is to rapidly publish high-quality original articles, reviews, and commentaries in the fields of gastroenterology, hepatology, gastrointestinal endoscopy, gastrointestinal surgery, hepatobiliary surgery, gastrointestinal oncology, gastrointestinal radiation oncology, gastrointestinal imaging, gastrointestinal interventional therapy, gastrointestinal infectious diseases, gastrointestinal pharmacology, gastrointestinal pathophysiology, gastrointestinal pathology, evidence-based medicine in gastroenterology, pancreatology, gastrointestinal laboratory medicine, gastrointestinal molecular biology, gastrointestinal immunology, gastrointestinal microbiology, gastrointestinal genetics, gastrointestinal translational medicine, gastrointestinal diagnostics, and gastrointestinal therapeutics. *WJG* is dedicated to become an influential and prestigious journal in gastroenterology and hepatology, to promote the development of above disciplines, and to improve the diagnostic and therapeutic skill and expertise of clinicians.

### INDEXING/ABSTRACTING

*World Journal of Gastroenterology* (*WJG*) is now indexed in Current Contents<sup>®</sup>/Clinical Medicine, Science Citation Index Expanded (also known as SciSearch<sup>®</sup>), Journal Citation Reports<sup>®</sup>, Index Medicus, MEDLINE, PubMed, PubMed Central and Directory of Open Access Journals. The 2017 edition of Journal Citation Reports<sup>®</sup> cites the 2016 impact factor for *WJG* as 3.365 (5-year impact factor: 3.176), ranking *WJG* as 29<sup>th</sup> among 79 journals in gastroenterology and hepatology (quartile in category Q2).

### FLYLEAF

#### I-IX Editorial Board

### EDITORS FOR THIS ISSUE

Responsible Assistant Editor: *Xiang Li*  
Responsible Electronic Editor: *Yin-Jie Ma*  
Proofing Editor-in-Chief: *Lian-Sheng Ma*

Responsible Science Editor: *Yuan Qi*  
Proofing Editorial Office Director: *Jin-Lei Wang*

NAME OF JOURNAL  
*World Journal of Gastroenterology*

ISSN  
ISSN 1007-9327 (print)  
ISSN 2219-2840 (online)

LAUNCH DATE  
October 1, 1995

FREQUENCY  
Weekly

#### EDITORS-IN-CHIEF

**Damian Garcia-Olmo, MD, PhD, Doctor, Professor, Surgeon**, Department of Surgery, Universidad Autonoma de Madrid; Department of General Surgery, Fundacion Jimenez Diaz University Hospital, Madrid 28040, Spain

**Stephen C Strom, PhD, Professor**, Department of Laboratory Medicine, Division of Pathology, Karolinska Institutet, Stockholm 141-86, Sweden

**Andrzej S Tarnawski, MD, PhD, DSc (Med), Professor of Medicine, Chief Gastroenterology**, VA Long Beach Health Care System, University of California, Irvine, CA, 5901 E. Seventh Str., Long Beach,

CA 90822, United States

#### EDITORIAL BOARD MEMBERS

All editorial board members resources online at <http://www.wjgnet.com/1007-9327/editorialboard.htm>

#### EDITORIAL OFFICE

Jin-Lei Wang, Director  
Yuan Qi, Vice Director  
Ze-Mao Gong, Vice Director  
*World Journal of Gastroenterology*  
Baishideng Publishing Group Inc  
7901 Stoneridge Drive, Suite 501,  
Pleasanton, CA 94588, USA  
Telephone: +1-925-2238242  
Fax: +1-925-2238243  
E-mail: [editorialoffice@wjgnet.com](mailto:editorialoffice@wjgnet.com)  
Help Desk: <http://www.f6publishing.com/helpdesk>  
<http://www.wjgnet.com>

#### PUBLISHER

Baishideng Publishing Group Inc  
7901 Stoneridge Drive, Suite 501,  
Pleasanton, CA 94588, USA  
Telephone: +1-925-2238242  
Fax: +1-925-2238243  
E-mail: [bpoffice@wjgnet.com](mailto:bpoffice@wjgnet.com)  
Help Desk: <http://www.f6publishing.com/helpdesk>

<http://www.wjgnet.com>

PUBLICATION DATE  
October 28, 2017

#### COPYRIGHT

© 2017 Baishideng Publishing Group Inc. Articles published by this Open-Access journal are distributed under the terms of the Creative Commons Attribution Non-commercial License, which permits use, distribution, and reproduction in any medium, provided the original work is properly cited, the use is non commercial and is otherwise in compliance with the license.

#### SPECIAL STATEMENT

All articles published in journals owned by the Baishideng Publishing Group (BPG) represent the views and opinions of their authors, and not the views, opinions or policies of the BPG, except where otherwise explicitly indicated.

#### INSTRUCTIONS TO AUTHORS

Full instructions are available online at <http://www.wjgnet.com/bpg/gerinfo/204>

ONLINE SUBMISSION  
<http://www.f6publishing.com>

## Basic Study

# Relationship between autophagy and perineural invasion, clinicopathological features, and prognosis in pancreatic cancer

Yan-Hui Yang, Jiang-Bo Liu, Yang Gui, Liang-Liang Lei, Shui-Jun Zhang

Yan-Hui Yang, Department of Hepatobiliary and Pancreatic Surgery, the First Affiliated Hospital of Zhengzhou University, Zhengzhou 450052, Henan Province, China

Shui-Jun Zhang, Henan Key Laboratory of Digestive Organ Transplantation, Open and Key Laboratory of Hepatobiliary and Pancreatic Surgery and Digestive Organ Transplantation at Henan Universities, Zhengzhou Key Laboratory of Hepatobiliary Pancreatic Diseases and Organ Transplantation, Zhengzhou 450052, Henan Province, China

Shui-Jun Zhang, Department of Hepatobiliary and Pancreatic Surgery, the First Affiliated Hospital of Zhengzhou University, Zhengzhou 450052, Henan Province, China

Jiang-Bo Liu, Liang-Liang Lei, Department of General Surgery, First Affiliated Hospital, College of Clinical Medicine, Henan University of Science and Technology, Luoyang 471000, Henan Province, China

Yan-Hui Yang, Yang Gui, Department of Hepatobiliary Surgery, First Affiliated Hospital, College of Clinical Medicine, Henan University of Science and Technology, Luoyang 471000, Henan Province, China

ORCID number: Yan-Hui Yang (0000-0001-6142-3283); Jiang-Bo Liu (0000-0002-1384-7353); Yang Gui (0000-0002-8721-9720); Liang-Liang Lei (0000-0001-5778-596x); Shui-Jun Zhang (0000-0003-4893-4331).

**Author contributions:** Yang YH and Liu JB contributed equally to this work; Yang YH and Liu JB performed the majority of the experiments and critically revised the manuscript; Gui Y and Lei LL assisted with various experiments and helped to analyze the data; Zhang SJ and Liu JB drafted and edited the manuscript.

**Supported by the National Natural Science Foundation of China, No. U1504815.**

**Institutional review board statement:** The study was reviewed and approved by the Institutional Review Board of the First

Affiliated Hospital of Zhengzhou University.

**Conflict-of-interest statement:** The authors declare no competing interests.

**Data sharing statement:** No additional unpublished data are available.

**Open-Access:** This article is an open-access article which was selected by an in-house editor and fully peer-reviewed by external reviewers. It is distributed in accordance with the Creative Commons Attribution Non Commercial (CC BY-NC 4.0) license, which permits others to distribute, remix, adapt, build upon this work non-commercially, and license their derivative works on different terms, provided the original work is properly cited and the use is non-commercial. See: <http://creativecommons.org/licenses/by-nc/4.0/>

**Manuscript source:** Unsolicited manuscript

**Correspondence to:** Shui-Jun Zhang, MD, PhD, Department of Hepatobiliary and Pancreatic Surgery, the First Affiliated Hospital of Zhengzhou University, Zhengzhou 450052, Henan Province, China. [zhangshuijun@zzu.edu.cn](mailto:zhangshuijun@zzu.edu.cn)  
Telephone: +86-371-66964992  
Fax: +86-371-66964992

**Received:** July 2, 2017

**Peer-review started:** August 17, 2017

**First decision:** August 30, 2017

**Revised:** September 13, 2017

**Accepted:** September 20, 2017

**Article in press:** September 19, 2017

**Published online:** October 28, 2017

## Abstract

### AIM

To investigate the relationship between autophagy



and perineural invasion (PNI), clinical features, and prognosis in patients with pancreatic cancer.

## METHODS

Clinical and pathological data were retrospectively collected from 109 patients with pancreatic ductal adenocarcinoma who underwent radical resection at the First Affiliated Hospital of Zhengzhou University from January 2011 to August 2016. Expression levels of the autophagy-related protein microtubule-associated protein 1A/1B-light chain 3 (LC3) and PNI marker ubiquitin carboxy-terminal hydrolase (UCH) in pancreatic cancer tissues were detected by immunohistochemistry. The correlations among LC3 expression, PNI, and clinical pathological features in pancreatic cancer were analyzed. The patients were followed for further survival analysis.

## RESULTS

In 109 cases of pancreatic cancer, 68.8% (75/109) had evidence of PNI and 61.5% (67/109) had high LC3 expression. PNI was associated with lymph node metastasis, pancreatitis, and CA19-9 levels ( $P < 0.05$ ). LC3 expression was related to lymph node metastasis ( $P < 0.05$ ) and was positively correlated with neural invasion ( $P < 0.05$ ,  $r = 0.227$ ). Multivariate logistic regression analysis indicated that LC3 expression, lymph node metastasis, pancreatitis, and CA19-9 level were factors that influenced neural invasion, whereas only neural invasion itself was an independent factor for high LC3 expression. Univariate analysis showed that LC3 expression, neural invasion, and CA19-9 level were related to the overall survival of pancreatic cancer patients ( $P < 0.05$ ). Multivariate COX regression analysis indicated that PNI and LC3 expression were independent risk factors for poor prognosis in pancreatic cancer ( $P < 0.05$ ).

## CONCLUSION

PNI in patients with pancreatic cancer is positively related to autophagy. Neural invasion and LC3 expression are independent risk factors for pancreatic cancer with a poor prognosis.

**Key words:** Pancreatic cancer; Perineural invasion; Autophagy; Clinical pathological features; Prognosis

© The Author(s) 2017. Published by Baishideng Publishing Group Inc. All rights reserved.

**Core tip:** The relationship between autophagy and perineural invasion (PNI) was explored for the first time in pancreatic cancer. Pancreatic cancer PNI is related to microtubule-associated protein 1A/1B-light chain 3 (LC3) expression-determined autophagy. PNI and LC3 expression were independent prognostic factors in pancreatic cancer. There might be a special association between autophagy and PNI, which contributes to pancreatic cancer progression. This study might provide

a new insight for the mechanism of PNI in pancreatic cancer.

Yang YH, Liu JB, Gui Y, Lei LL, Zhang SJ. Relationship between autophagy and perineural invasion, clinicopathological features, and prognosis in pancreatic cancer. *World J Gastroenterol* 2017; 23(40): 7232-7241 Available from: URL: <http://www.wjgnet.com/1007-9327/full/v23/i40/7232.htm> DOI: <http://dx.doi.org/10.3748/wjg.v23.i40.7232>

## INTRODUCTION

Pancreatic cancer, also known as “the king of cancer”, is a malignant tumor with a poor prognosis that has almost equal mortality and morbidity in patients. The incidence of pancreatic cancer is increasing yearly<sup>[1]</sup>. Surgical resection is the only possible cure of pancreatic cancer, although less than 20% of patients are eligible for radical surgery<sup>[2]</sup>. At the time of diagnosis, most pancreatic cancer patients have distant metastasis due to early occult symptoms, a lack of effective screening, and perineural growth characteristics. The incidence of perineural invasion (PNI) in pancreatic cancer is up to 80%-100% and is an important factor leading to postoperative pancreatic cancer recurrence. Previous studies have shown a higher recurrence rate after surgery and shorter disease-free and overall survival rates in cases of pancreatic cancer with PNI compared with those of cases without PNI. PNI evaluation of pancreatic cancer can predict disease recurrence and prognosis after surgery<sup>[3,4]</sup>. However, the pathogenesis of PNI has not yet been defined.

Autophagy has a dual role in promoting and inhibiting tumor growth<sup>[5,6]</sup>. Autophagy, as a mechanism of avoidance of anoikis in pancreatic cancer, is closely related to the survival of pancreatic cancer cells. Microtubule-associated protein 1A/1B-light chain 3 (LC3) is a typical marker of autophagy. LC3 labeling has been used to evaluate autophagy, and high levels of LC3 expression have been found in pancreatic cancer cells<sup>[7]</sup>. In addition, a previous study also showed that pancreatic cancer cells with PNI have higher levels of autophagy<sup>[7]</sup>.

No study has examined the relationship between autophagy and PNI in pancreatic cancer cells. However, it can be inferred that only those pancreatic cancer cells that can survive within nerve tissues can eventually develop into a clinically visible form of pancreatic cancer PNI. Autophagy is likely one of the mechanisms involved in cancer cell survival. Therefore, this study focused on the relationship between pancreatic cancer cell autophagy and PNI, clinicopathological features, and prognosis, with an aim to provide a clinical basis for further study of the autophagy mechanisms affecting

the pathogenesis of pancreatic cancer PNI.

## MATERIALS AND METHODS

### General data

Retrospective data were collected from 109 cases of pathologically confirmed pancreatic ductal adenocarcinoma patients who underwent radical surgery for pancreatic cancer from January 2011 to August 2016 at the First Affiliated Hospital of Zhengzhou University. The included pancreatic cancer patients were not treated with radiation or chemotherapy prior to surgery, but received postoperative adjuvant gemcitabine- or non-gemcitabine-based chemotherapy, and/or radiotherapy. Tissue specimens were fixed in formalin and paraffin-embedded for histological study. Clinical and pathological data were collected, and all cases were followed. The date of surgical resection was considered as the starting time, and August 2016 was the deadline. The primary endpoint was death due to pancreatic cancer. Eighty cases were followed for more than 12 mo. All patients provided informed consent for the collection of biological samples, and this study was approved by the Institutional Review Board of the First Affiliated Hospital of Zhengzhou University (Scientific Research No. 5, 2015).

Out of the 109 patients studied, 61 were male, and 48 were female. Their ages ranged from 19 to 81 years, and the median age was 59 years. Tumor diameters ranged from 0.7-12 cm with a median value of 4.0 cm. The survival time of 80 patients who were followed for more than 12 mo was 1 to 54 mo, and the median survival time was 20 mo. By the end of the follow-up period, 38 patients had died. The clinical stages were classified according to the AJCC 2011 standard.

### Immunohistochemistry

Expression levels of LC3 and the nerve fiber marker ubiquitin carboxy-terminal hydrolase (UCH) were detected by immunohistochemistry using a standardized streptavidin-peroxidase (SP) method and the SP immunohistochemical Kit (ZSGB-Bio, Beijing, China) according to the manufacturer's instructions. The pancreatic cancer tissues were routinely embedded in paraffin and sliced into 4- $\mu$ m-thick continuous sections. The sections were then warmed in an autoclave to remove residual wax and were hydrated before antigen retrieval. Endogenous peroxidase activity was eliminated by incubating the tissue sections at room temperature with 3% H<sub>2</sub>O<sub>2</sub> for 10 min. The tissue sections were washed three times with PBS continuously and incubated with a small amount of goat serum at room temperature in a closed chamber for 15 min. The goat serum was then poured off (not washed), and anti-LC3 (Proteintech Group, diluted 1:120) and anti-UCH antibodies (Proteintech, diluted 1:100) were added and incubated overnight at 4 °C. The next day, the slides were thoroughly washed with PBS, and a biotinylated secondary antibody in

a working liquid was added and incubated at room temperature for 15 min. After the slides were washed carefully with PBS again, horseradish peroxidase was added, and the slides were incubated for 5 min at room temperature. The slides were then rinsed with PBS three times, and a drop of DAB buffer was placed on the tissue slice and rinsed after 1 min to stop the color reaction. Then, the nuclei were stained with hematoxylin, and the samples were dehydrated in gradient alcohol, covered with transparent balata, and observed by microscopy. PBS was used in place of the primary antibody to serve as the negative control, and a known positive slice served as the positive control. The immunohistochemical results were evaluated in a double-blind manner by two pathologists. If the results were inconsistent, a third pathologist reviewed the data to reach a consensus.

### LC3 immunohistochemical score

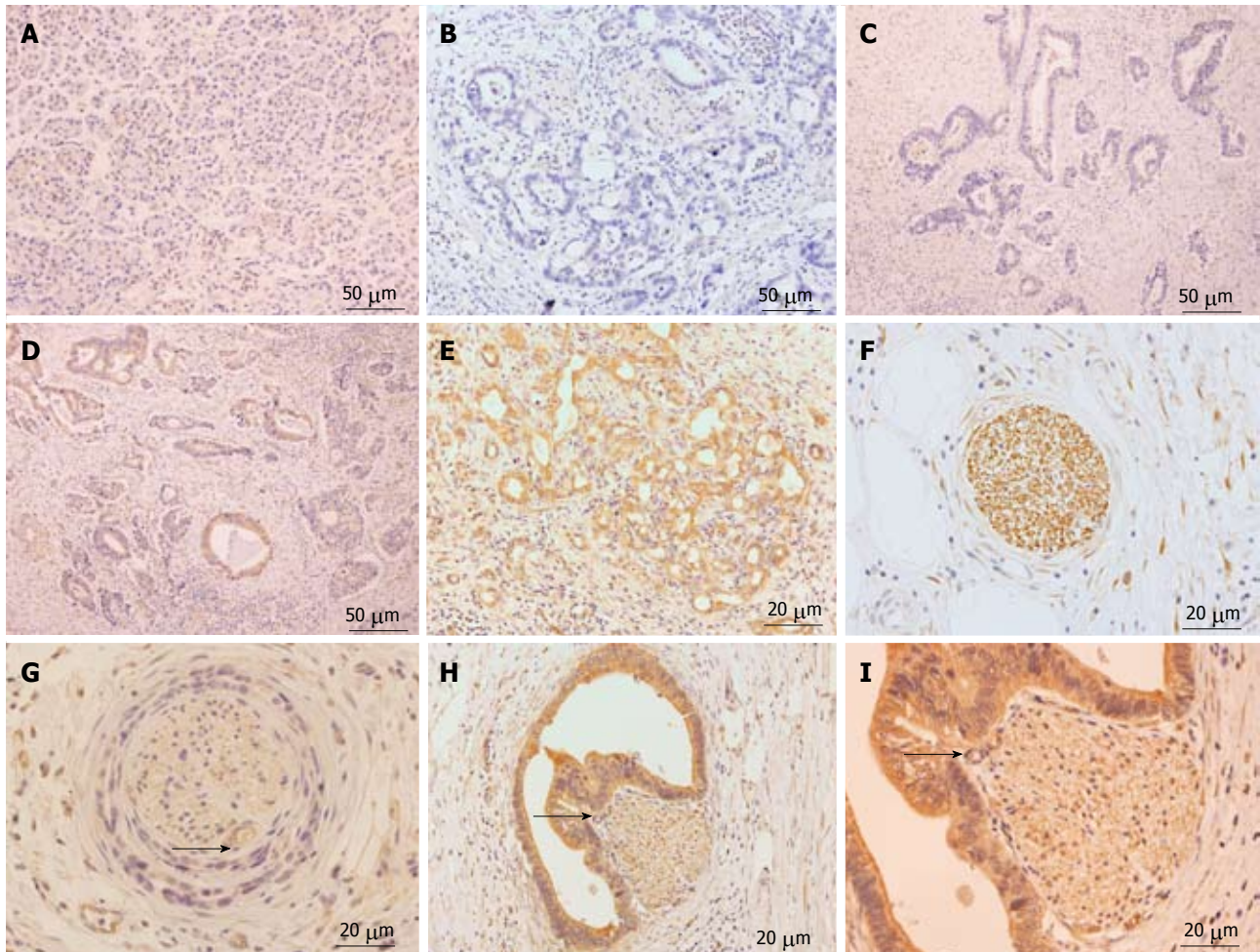
LC3-positive cells detected by immunohistochemistry required the following characteristics: (1) clear cell structure; (2) accurate localization of the positive particle; and (3) obviously higher pigmentation than that of the background and clear contrast. Positive LC3 expression was mainly localized in pancreatic cancer cell cytoplasm. Five random power fields (400  $\times$  magnification) were observed for each case using an optical microscope. One hundred homogeneous cells were counted, and the staining intensity and the proportion of positive cells were observed. A semi-quantitative analysis was conducted using the product method. Dye intensity was scored as follows: no yellow, 0 points; light yellow, 1 point; yellow or deep yellow, 2 points; and brown or tan, 3 points. The expression range was scored as follows: <10%, 0 points; 10% to 25%, 1 point; 26% to 50%, 2 points; 51% to 75%, 3 points; and >75%, 4 points. The value from dye intensity was then multiplied by the value from the expression range to obtain the overall score: 0 points, negative (-); 1 to 3 points, weakly positive (+); 4 to 6 points, moderately positive (+ +); and 7 to 12 points, strongly positive (+ + +). More than 3 points indicated high expression, and 3 points or fewer indicated low expression.

### PNI evaluation

UCH was expressed in the cytoplasm of all nerve fibers. The location of nerve fibers can be clearly defined by UCH to determine the invasion of cancer cells to the nerve tissue. According to previous reports, positive PNI status was determined as cancer cells being found in the perineural spaces, perineurium or nerve tract<sup>[8]</sup>.

### Survival analysis

The effects of clinicopathological factors such as LC3 expression and PNI on the overall survival in pancreatic cancer were analyzed in 80 patients with



**Figure 1** Representative immunohistochemical results of microtubule-associated protein 1A/1B-light chain 3 and perineural invasion. A: Negative expression of LC3 in normal paraneoplastic pancreatic tissue ( $\times 200$ ); B: Negative expression of LC3 in pancreatic cancer tissue ( $\times 200$ ); C: Weakly positive expression of LC3 in pancreatic cancer tissue ( $\times 200$ ); D: Moderately positive expression of LC3 in pancreatic cancer tissue ( $\times 200$ ); E: Strongly positive expression of LC3 in pancreatic cancer tissue ( $\times 200$ ); F and G: Perineural invasion in pancreatic cancer tissues ( $\times 400$ , arrow represents cancer cells infiltrating into nerve tissue); H: Pancreatic cancer cells with high LC3 expression enclosing and invading into nerve tissue ( $\times 200$ , arrow represents cancer cells infiltrating into nerve tissue); I: Pancreatic cancer cells with high LC3 expression enclosing and invading into nerve tissue ( $\times 400$ , arrow represents cancer cells infiltrating into nerve tissue). LC3: Microtubule-associated protein 1A/1B-light chain 3.

more than 12 mo of follow-up data. The following factors were included in the survival analysis: LC3 expression, age, gender, tumor location, tumor size, histological grade, clinical stage, vascular invasion, lymph node metastasis, pancreatitis, diabetes status, and preoperative CA19-9 level.

#### Data analysis

Statistical analyses were performed using SPSS 19.0 and GraphPad Prism 5.0 statistical software. Enumeration data were checked by the Chi-square test or the four-grid table Fisher exact probability method. Correlations between clinicopathological factors such as LC3 expression and PNI were analyzed using the Spearman correlation method. LC3 expression and the factors that independently influenced neural infiltration were analyzed using two categories and unconditional logistic regression. Univariate and multivariate analyses were performed on factors that might affect the prognosis according to a COX risk regression

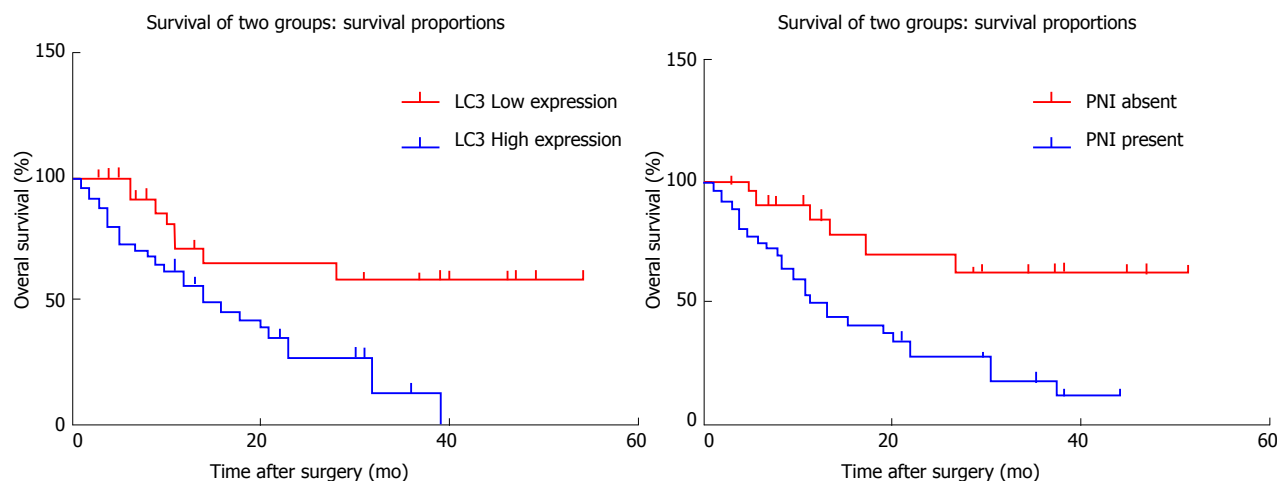
model. The survival curve was plotted according to the Kaplan-Meier method. Results were considered significant when  $P < 0.05$ .

## RESULTS

### Evaluation of LC3 expression and PNI in pancreatic cancer

LC3 expression was mainly localized to the cytoplasm. In contrast to normal paraneoplastic pancreatic tissues (Figure 1A), the expression of LC3 in pancreatic cancer tissues ranged from low to high in four grades: negative, weakly positive, moderately positive, and strongly positive (Figure 1B-E). The immunohistochemical results indicated that LC3 protein expression was observed in pancreatic ducts, acinar epithelial cells, islet cells, and pancreatic cancer tissues. There was significantly increased LC3 protein expression in pancreatic cancer tissues and peritumoral tissues. In 109 pancreatic cancer tissues, 42 had





**Figure 2** Kaplan-Meier estimates of overall survival in patients who underwent radical surgery. A: The overall survival rate of the LC3 low-expression group was better than that of the high-expression group ( $P < 0.05$ ); B: The overall survival rate of the patients without nerve invasion group was better than that of those with nerve infiltration ( $P < 0.05$ ).

**Table 1** Relationship between microtubule-associated protein 1A/1B-light chain 3 expression and perineural invasion in pancreatic cancer

LC3	PNI		<i>P</i> value	<i>r</i>
	Absent	Present		
Low expression	18	22	0.018	0.227
High expression	16	53		

$P < 0.05$ , PNI absent vs present. PNI: Perineural invasion

low LC3 expression (termed “low autophagy level”), including 6 (5.5%) negative cases and 36 (33%) weakly positive cases (Figure 1B and C); while 67 had high LC3 expression (termed “high autophagy level”), including 50 (45.9%) that were moderately positive and 17 (15.6%) that were strongly positive (Figure 1D and E). PNI by pancreatic cancer cells occurred mainly in the pancreatic cancer stroma. According to a previous study<sup>[9]</sup>, four types of relationships exist between PNI and cancer nests: no PNI, perineurium invasion, perineural space invasion, and invasion to the nerve fiber tracts. In 109 cases of pancreatic cancer, 75 were positive (Figure 1F-I), and 34 were negative for nerve invasion. The positive rate of nerve invasion was 68.8%. High LC3 expression was also found in the nests surrounding the PNI (Figure 1I).

#### Relationship between LC3 expression and PNI in pancreatic cancer

The analysis of LC3 expression and PNI of pancreatic cancer demonstrated a significant positive correlation between these two parameters ( $P = 0.018$ ,  $r = 0.227$ ). LC3 expression in pancreatic cancer tissues with PNI was significantly higher than that in pancreatic cancer tissues without PNI (Table 1).

#### Relationship between pancreatic cancer cell autophagy and PNI and clinicopathological features

LC3 expression was associated with lymph node metastasis ( $P < 0.05$ ). LC3 expression was not related to sex, gender, tumor location, tumor size, histological grade, clinical stage, vascular invasion, or diabetes mellitus status. PNI was related to lymph node metastasis, pancreatitis, and CA19-9 levels ( $P < 0.05$ ) and was not related to sex, age, tumor location, tumor size, histological grade, clinical stage, vascular invasion, or diabetes mellitus status (Table 2).

#### Multivariate logistic regression analysis of LC3 expression and PNI

The clinicopathological factors possibly associated with LC3 expression and PNI were evaluated by multivariate analysis using a logistic regression model. The clinicopathological factors included LC3 expression and nerve infiltration, age, tumor site, tumor size, histological grade, clinical stage, vascular invasion, lymph node metastasis, diabetes, pancreatitis, and preoperative CA19-9 level. The results showed that LC3 expression, lymph node metastasis, pancreatitis, and CA19-9 level were the factors that influenced the occurrence of PNI, which was an independent factor affecting LC3 expression (Tables 3 and 4).

#### Survival analysis

According to LC3 expression, patients were divided into a high-expression or a low-expression group. The overall survival rate of the low-expression group was better than that of the high-expression group, and the risk of death was 2.78-times higher in the LC3 high-expression group than that in the low-expression group. This difference between the two groups was significant (Figure 2A). The patients were also

**Table 2 Relationships of perineural invasion and microtubule-associated protein 1A/1B-light chain 3 expression with clinicopathological features**

Parameter	n	PNI		P value	LC3		P value
		Absent	Present		Low expression	High expression	
Age (yr)							
≤ 58	54	19	35	0.373	23	31	0.206
> 58	55	15	40		17	38	
Gender							
Male	61	15	46	0.093	26	35	0.148
Female	48	19	29		14	34	
Tumor location							
Head	66	17	49	0.129	28	38	0.124
Body/tail	43	17	26		12	31	
Tumor size (cm)							
≤ 2	18	6	12	0.83	8	10	0.455
> 2	91	28	63		32	59	
Histologic grade							
Well or moderate	74	24	50	0.685	23	51	0.077
Poor	35	10	25		17	18	
Vascular invasion							
Negative	83	26	57	0.957	31	52	0.801
Positive	26	8	18		9	17	
Lymph node metastasis							
Negative	36	17	19	0.011 <sup>a</sup>	18	18	0.043 <sup>a</sup>
Positive	73	17	56		22	51	
AJCC stage							
I + II	69	22	47	0.838	25	44	0.895
III + IV	40	12	28		15	25	
Pancreatitis							
Negative	30	15	15	0.009 <sup>a</sup>	12	18	0.659
Positive	79	19	60		28	51	
Diabetes							
Negative	89	27	62	0.684	33	56	0.862
Positive	20	7	13		7	13	
CA19-9 level (U/mL)							
≤ 37	37	19	19	0.001 <sup>a</sup>	13	24	0.808
> 37	72	15	57		27	45	

<sup>a</sup>P < 0.05, LC3 low expression *vs* high expression; PNI absent *vs* present. LC3: Microtubule-associated protein 1A/1B-light chain 3; PNI: Perineural invasion.**Table 3 Multivariate logistic regression analysis of perineural invasion with clinicopathological features in pancreatic cancer**

Parameter	Estimate, B	Standard error	Wald statistic	P value	Odds ratio	95%CI
Lymph node metastasis (positive <i>vs</i> negative)	1.068	0.499	4.581	0.032 <sup>a</sup>	2.911	1.094-7.743
CA199 (> 37 U/mL <i>vs</i> ≤ 37 U/mL)	1.508	0.493	9.368	0.002 <sup>a</sup>	4.520	1.720-11.874
Pancreatitis (present <i>vs</i> absent)	1.301	0.514	6.419	0.011 <sup>a</sup>	3.673	1.343-10.049
LC3 (high <i>vs</i> low)	1.032	0.491	4.406	0.036 <sup>a</sup>	2.806	1.071-7.351
Constant	-7.209	1.799	16.058	0	0.001	

<sup>a</sup>P < 0.05. CI: Confidence interval; LC3: Microtubule-associated protein 1A/1B-light chain 3; PNI: Perineural invasion.

divided into a nerve-invasion group and a no-nerve-invasion group according to whether there was nerve infiltration. The overall survival rate of the patients without nerve invasion was better than that of the nerve-invasion group. The risk of death was 2.93-times greater in the PNI-positive group than in the PNI-negative group, and the difference between the two groups was significant (Figure 2B). Univariate analysis showed that CA19-9 level, PNI, and LC3 expression influenced the prognosis (Table 5). A factor of  $P < 0.2$  was added into the COX risk regression model. Multivariate analysis was performed using the stepwise conditional method. The results showed that PNI and

LC3 expression were independent prognostic factors that influenced pancreatic cancer (Table 6).

## DISCUSSION

Pancreatic cancer has a poor treatment outcome because of a low resection rate, early invasion and metastasis, and insensitivity to radiotherapy and chemotherapy<sup>[10-13]</sup>. PNI is common in pancreatic cancer, and also found in breast, prostate, and rectal cancers<sup>[14]</sup>. Many studies have suggested that PNI is the main cause of abdominal pain in patients and is also one of the important causes of local recurrence of pancreatic

**Table 4 Multivariate logistic regression analysis of microtubule-associated protein 1A/1B-light chain 3 expression with clinicopathological features in pancreatic cancer**

Parameter	Estimate, B	Standard error	Wald statistic	P value	Odds ratio	95%CI
PNI (present <i>vs</i> absent)	0.997	0.427	5.451	0.02 <sup>a</sup>	2.71	1.174-6.259
Constant	-1.115	0.732	2.316	0.128	0.328	

<sup>a</sup>P < 0.05. PNI: Perineural invasion.**Table 5 Univariate analysis of survival in patients who underwent radical surgery**

Parameter	Hazard ratio	95%CI	P value
PNI (present <i>vs</i> absent)	3.701	1.539-8.903	0.003 <sup>a</sup>
LC3 (high <i>vs</i> low)	3.196	1.433-7.126	0.005 <sup>a</sup>
Sex (male <i>vs</i> female)	1.154	0.590-2.260	0.676
Age (> 58 yr <i>vs</i> ≤ 58 yr)	1.176	0.621-2.225	0.619
Tumor location (body/tail <i>vs</i> head)	1.102	0.570-2.131	0.773
Histologic grade (poorly <i>vs</i> well or moderate)	1.287	0.636-2.604	0.484
Tumor size (> 2 cm <i>vs</i> ≤ 2 cm)	0.940	0.444-1.991	0.871
Vascular invasion (positive <i>vs</i> negative)	1.821	0.883-3.755	0.105
Lymph node metastasis (positive <i>vs</i> negative)	0.871	0.449-1.688	0.682
AJCC stage (III + IV <i>vs</i> I + II)	1.473	0.752-2.889	0.259
Diabetes (present <i>vs</i> absent)	1.105	0.522-2.337	0.795
Pancreatitis (present <i>vs</i> absent)	1.075	0.520-2.222	0.845
CA19-9 level (> 37 U/mL <i>vs</i> ≤ 37 U/mL)	2.648	1.286-5.454	0.008 <sup>a</sup>

<sup>a</sup>P < 0.05. LC3: Microtubule-associated protein 1A/1B-light chain 3; PNI: Perineural invasion.

cancer<sup>[15-19]</sup>. PNI is a continuous process involving multiple molecular factors and tumor microenvironment, but it is unclarified how cancer cells maintain their survival and proliferation from pancreatic cancer tissues to the external pancreatic plexus<sup>[20]</sup>. Autophagy is the process of degrading cytoplasmic proteins or organelles through lysosomes. Under physiological conditions, autophagy plays a major role in maintaining the intracellular environment stability<sup>[21,22]</sup>. Autophagy is an important mechanism of escaping apoptosis for tumor cells. Moreover, autophagy may mediate resistance to chemotherapy in pancreatic cancer<sup>[23-25]</sup>. Therefore, this study was designed and completed in a retrospective manner to evaluate the relationship between pancreatic cancer cell autophagy and PNI and patient survival.

This study found that high expression of LC3 was present in the cancer nests around the nerve infiltration, consistent with the discovery of Yang *et al.*<sup>[7]</sup>. In histology terms, it has been suggested that high LC3 expression is related to PNI. Further analysis of immunohistochemical data showed that there was a significant positive correlation between LC3 expression and PNI in pancreatic cancer tissues. Therefore, we speculated that, in the PNI process, a high autophagy level may assist cancer cells in escaping apoptosis, avoiding the damage of adverse stress and providing energy for the invasion and metastasis of pancreatic

cancer.

There is dissidence in the correlation between PNI and lymph node metastasis<sup>[26-28]</sup>. This study showed that PNI was associated with lymph node metastasis, pancreatitis, and CA19-9 levels ( $P < 0.05$ ), while it had no association with sex, age, tumor location, tumor size, histological grade, clinical stage, vascular invasion, or diabetes mellitus. LC3 was related to lymph node metastasis but no other clinicopathological features. Multivariate logistic regression analysis also showed that LC3, lymph node metastasis, pancreatitis, and CA19-9 levels were the factors that influenced PNI, while PNI was an independent factor affecting LC3 expression. Tanaka *et al.*<sup>[26]</sup> and Ozaki *et al.*<sup>[28]</sup> believe that lymph node metastasis can promote PNI. The cancer cells in lymph node metastases can form a lymphatic satellite around the nerve and break through the nerve membrane; then, nerve invasion occurs. This study is consistent with results suggesting the need for regional lymph node dissection during surgical treatment<sup>[27]</sup>. Through this study, we can conclude that high LC3 expression, lymph node metastasis, pancreatitis, and CA19-9 levels usually indicate the possibility of nerve invasion. Gender, age, tumor site, tumor size, histological grade, clinical stage, vascular invasion, and diabetes are not effective indicators of neural invasion and autophagy and cannot be used as a determinant of resection of the peripancreatic nerve

**Table 6 Multivariable analysis of survival in patients who underwent radical surgery**

Parameter	Hazard ratio	95%CI	P value
PNI (present <i>vs</i> absent)	2.962	1.212-7.238	0.017 <sup>a</sup>
LC3 (high <i>vs</i> low)	2.491	1.107-5.608	0.027 <sup>a</sup>

<sup>a</sup>P < 0.05. LC3: Microtubule-associated protein 1A/1B-light chain 3; PNI: Perineural invasion.

during surgery.

The overall survival rates of the LC3 high-expression group and the nerve-invasion group were significantly lower than those of the low-expression group and the no-nerve-invasion group. Univariate analysis showed that the level of CA19-9, PNI, and autophagy were associated with prognostic factors. Multivariate analysis showed that PNI and high LC3 expression were independent prognostic factors in pancreatic cancer patients. Autophagy is very complex and often plays an important role in tumor progression<sup>[6,29]</sup>. Interestingly, this study found that high autophagy level is closely related to PNI, while both of which are independent risk factors for pancreatic cancer with a poor prognosis. The autophagy associated with poor survival in pancreatic cancer could be explained by the properties of autophagy assisting cancer cells to evade stress-induced apoptosis in PNI environment and undoubtedly promote tumor cell survival<sup>[30,31]</sup>. Therefore, the high autophagy of cancer cells may promote the malignant progression of pancreatic cancer, resulting in PNI and the poor treatment outcome in patients with the disease.

In summary, autophagy and PNI of pancreatic cancer cells are independent risk factors for adverse prognosis. There is a significant correlation between them, and there may be a pathway between them through which they interact with each other to promote the malignant progression of pancreatic cancer. How to control the role of autophagy in PNI of pancreatic cancer and then improve cancer prognosis requires further studies into the molecular mechanisms involved.

## ARTICLE HIGHLIGHTS

### Research background

Pancreatic cancer is a malignant tumor with a poor prognosis that has almost equal mortality and morbidity in patients. At the time of diagnosis, most pancreatic cancer patients have distant metastasis due to early occult symptoms, a lack of effective screening, and perineural growth characteristics. The incidence of perineural invasion (PNI) in pancreatic cancer is 80%-100% and is an important factor leading to postoperative pancreatic cancer recurrence. PNI evaluation of pancreatic cancer can predict disease recurrence and prognosis after surgery. However, the pathogenesis of PNI has not yet been defined. Autophagy, as a mechanism of avoidance of anoikis in pancreatic cancer, is

closely related to the survival of pancreatic cancer cells. Microtubule-associated protein 1A/1B-light chain 3 (LC3) is a typical marker of autophagy. LC3 labeling has been used to evaluate autophagy, and high levels of LC3 expression have been found in pancreatic cancer cells. In addition, a previous study showed that pancreatic cancer cells with PNI have higher levels of autophagy. No study has examined the relationship between autophagy and PNI in pancreatic cancer cells.

### Research motivation

The relationship between autophagy and PNI was explored for the first time in pancreatic cancer. Pancreatic cancer PNI is related to LC3 expression-determined autophagy. PNI and LC3 expression were independent prognostic factors in pancreatic cancer. There might be a special association between autophagy and PNI, which contributes to pancreatic cancer progression. This study might provide new insight into the mechanism of PNI in pancreatic cancer.

### Research objectives

This study focused on the relationship between pancreatic cancer cell autophagy and PNI, clinicopathological features, and prognosis. The authors found that autophagy and PNI of pancreatic cancer cells are independent risk factors for adverse prognosis. There is a significant correlation between them, and there may be a pathway between them through which they interact with each other to promote the malignant progression of pancreatic cancer. Controlling the role of autophagy in PNI of pancreatic cancer may improve cancer prognosis, which requires further studies into the molecular mechanisms involved.

### Research methods

Clinical and pathological data were retrospectively collected from 109 patients with pancreatic ductal adenocarcinoma who underwent radical resection at the First Affiliated Hospital of Zhengzhou University from January 2011 to August 2016. Expression levels of the autophagy-related protein LC3 and perineural invasion marker ubiquitin carboxy-terminal hydrolase in pancreatic cancer tissues were detected by immunohistochemistry. The correlations among LC3 expression, perineural invasion, and clinical pathological features in pancreatic cancer were analyzed. The patients were followed for further survival analysis.

### Research results

In this study, they found that LC3, lymph node metastasis, pancreatitis, and CA199 level were factors that influenced neural invasion, whereas only neural invasion itself was an independent factor of high LC3 expression. Perineural invasion and LC3 expression were independent risk factors for poor prognosis in pancreatic cancer. There is a significant correlation between them.

### Research conclusions

This study focused on the relationship between pancreatic cancer cell autophagy and PNI, clinicopathological features and prognosis. The authors found that autophagy and PNI of pancreatic cancer cells are independent risk factors for adverse prognosis. There is a significant correlation between them, and there must be a pathway between them through which they interact with each other to promote the malignant progression of pancreatic cancer. Controlling the role of autophagy in PNI of pancreatic cancer may improve cancer prognosis, which requires further studies into the molecular mechanisms involved.

## REFERENCES

- 1 Siegel RL, Miller KD, Jemal A. Cancer statistics, 2016. *CA*



- Cancer J Clin* 2016; **66**: 7-30 [PMID: 26742998 DOI: 10.3322/caac.21332]
- 2 **Zhang Y**, Dang C, Ma Q, Chen W, Nagata K. Predictors of systemic chemotherapy contraindication in pancreatic cancer patients with distant metastasis. *Hepatogastroenterology* 2007; **54**: 254-259 [PMID: 17419272]
- 3 **Hidalgo M**. Pancreatic cancer. *N Engl J Med* 2010; **362**: 1605-1617 [PMID: 20427809 DOI: 10.1056/NEJMra0901557]
- 4 **Gillen S**, Schuster T, Meyer Zum Büschenfelde C, Friess H, Kleeff J. Preoperative/neoadjuvant therapy in pancreatic cancer: a systematic review and meta-analysis of response and resection percentages. *PLoS Med* 2010; **7**: e1000267 [PMID: 20422030 DOI: 10.1371/journal.pmed.1000267]
- 5 **Zhou Y**, Zhou Q, Chen R. Pancreatic stellate cells promotes the perineural invasion in pancreatic cancer. *Med Hypotheses* 2012; **78**: 811-813 [PMID: 22513235 DOI: 10.1016/j.mehy.2012.03.017]
- 6 **Brech A**, Ahlquist T, Lothe RA, Stenmark H. Autophagy in tumour suppression and promotion. *Mol Oncol* 2009; **3**: 366-375 [PMID: 19559660 DOI: 10.1016/j.molonc.2009.05.007]
- 7 **Yang S**, Wang X, Contino G, Liesa M, Sahin E, Ying H, Bause A, Li Y, Stommel JM, Dell'antonio G, Mautner J, Tonon G, Haigis M, Shiriha OS, Doglioni C, Bardeesy N, Kimmelman AC. Pancreatic cancers require autophagy for tumor growth. *Genes Dev* 2011; **25**: 717-729 [PMID: 21406549 DOI: 10.1101/gad.2016111]
- 8 **Li J**, Ma Q, Liu H, Guo K, Li F, Li W, Han L, Wang F, Wu E. Relationship between neural alteration and perineural invasion in pancreatic cancer patients with hyperglycemia. *PLoS One* 2011; **6**: e17385 [PMID: 21386984 DOI: 10.1371/journal.pone.0017385]
- 9 **Zhu Z**, Friess H, diMola FF, Zimmermann A, Graber HU, Korc M, Büchler MW. Nerve growth factor expression correlates with perineural invasion and pain in human pancreatic cancer. *J Clin Oncol* 1999; **17**: 2419-2428 [PMID: 10561305 DOI: 10.1200/JCO.1999.17.8.2419]
- 10 **Moschidis A**, Papageorgiou A, Atmatzidis K, Tsalis K, Moschidis E, Livanis J, Chrysogelou E, Mourelatos D, Tsavdaridis D, Harlaftis N. Synergistic antitumor activity of oxaliplatin in combination with gemcitabine in pancreatic tumor-bearing mice. *Chemotherapy* 2007; **53**: 153-159 [PMID: 17347561 DOI: 10.1159/000100513]
- 11 **Takahashi H**, Akita H, Gotoh K, Kobayashi S, Marubashi S, Miyoshi N, Sugimura K, Motoori M, Kishi K, Noura S, Fujiwara Y, Ohue M, Ohigashi H, Yano M, Sakon M, Ishikawa O. Preoperative gemcitabine-based chemoradiation therapy for pancreatic ductal adenocarcinoma of the body and tail: impact of splenic vessels involvement on operative outcome and pattern of recurrence. *Surgery* 2015; **157**: 484-495 [PMID: 25444512 DOI: 10.1016/j.surg.2014.09.022]
- 12 **Ryan DP**, Hong TS, Bardeesy N. Pancreatic adenocarcinoma. *N Engl J Med* 2014; **371**: 1039-1049 [PMID: 25207767 DOI: 10.1056/NEJMra1404198]
- 13 **Lee MG**, Lee SH, Lee SJ, Lee YS, Hwang JH, Ryu JK, Kim YT, Kim DU, Woo SM. 5-Fluorouracil/leucovorin combined with irinotecan and oxaliplatin (FOLFIRINOX) as second-line chemotherapy in patients with advanced pancreatic cancer who have progressed on gemcitabine-based therapy. *Chemotherapy* 2013; **59**: 273-279 [PMID: 24457620 DOI: 10.1159/000356158]
- 14 **Agarwal JP**, Jain S, Gupta T, Tiwari M, Laskar SG, Dinshaw KA, Chaturvedi P, D'Cruz AK, Shrivastava SK. Intraoral adenoid cystic carcinoma: prognostic factors and outcome. *Oral Oncol* 2008; **44**: 986-993 [PMID: 18329324 DOI: 10.1016/j.oraloncology.2008.01.004]
- 15 **Bapat AA**, Hostetter G, Von Hoff DD, Han H. Perineural invasion and associated pain in pancreatic cancer. *Nat Rev Cancer* 2011; **11**: 695-707 [PMID: 21941281 DOI: 10.1038/nrc3131]
- 16 **Åkerberg D**, Ansari D, Andersson R. Re-evaluation of classical prognostic factors in resectable ductal adenocarcinoma of the pancreas. *World J Gastroenterol* 2016; **22**: 6424-6433 [PMID: 27605878 DOI: 10.3748/wjg.v22.i28.6424]
- 17 **Liu B**, Lu KY. Neural invasion in pancreatic carcinoma. *Hepatobiliary Pancreat Dis Int* 2002; **1**: 469-476 [PMID: 14607730]
- 18 **Cavel O**, Shomron O, Shabtay A, Vital J, Trejo-Leider L, Weizman N, Krelm Y, Fong Y, Wong RJ, Amit M, Gil Z. Endoneurial macrophages induce perineural invasion of pancreatic cancer cells by secretion of GDNF and activation of RET tyrosine kinase receptor. *Cancer Res* 2012; **72**: 5733-5743 [PMID: 22971345 DOI: 10.1158/0008-5472.CAN-12-0764]
- 19 **Li X**, Ma G, Ma Q, Li W, Liu J, Han L, Duan W, Xu Q, Liu H, Wang Z, Sun Q, Wang F, Wu E. Neurotransmitter substance P mediates pancreatic cancer perineural invasion via NK-1R in cancer cells. *Mol Cancer Res* 2013; **11**: 294-302 [PMID: 23345604 DOI: 10.1158/1541-7786.MCR-12-0609]
- 20 **Abiatari I**, DeOliveira T, Kerkadze V, Schwager C, Esposito I, Giese NA, Huber P, Bergman F, Abdollahi A, Friess H, Kleeff J. Consensus transcriptome signature of perineural invasion in pancreatic carcinoma. *Mol Cancer Ther* 2009; **8**: 1494-1504 [PMID: 19509238 DOI: 10.1158/1535-7163.MCT-08-0755]
- 21 **Terman A**, Dalen H, Eaton JW, Neuzil J, Brunk UT. Mitochondrial recycling and aging of cardiac myocytes: the role of autophagocytosis. *Exp Gerontol* 2003; **38**: 863-876 [PMID: 12915208 DOI: 10.1016/S0531-5565(03)00114-1]
- 22 **Levine B**, Yuan J. Autophagy in cell death: an innocent convict? *J Clin Invest* 2005; **115**: 2679-2688 [PMID: 16200202 DOI: 10.1172/JCI26390]
- 23 **Michaud M**, Martins I, Sukkurwala AQ, Adjemian S, Ma Y, Pellegatti P, Shen S, Kepp O, Scoazec M, Mignot G, Rello-Varona S, Tailler M, Menger L, Vacchelli L, Galluzzi L, Ghiringhelli F, di Virgilio F, Zitvogel L, Kroemer G. Autophagy-dependent anticancer immune responses induced by chemotherapeutic agents in mice. *Science* 2011; **334**: 1573-1577 [PMID: 22174255 DOI: 10.1126/science.1208347]
- 24 **Noman MZ**, Janji B, Kaminska B, Van Moer K, Pierson S, Przanowski P, Buart S, Berchem G, Romero P, Mami-Chouaib F, Chouaib S. Blocking hypoxia-induced autophagy in tumors restores cytotoxic T-cell activity and promotes regression. *Cancer Res* 2011; **71**: 5976-5986 [PMID: 21810913 DOI: 10.1158/0008-5472.CAN-11-1094]
- 25 **Notte A**, Leclerc L, Michiels C. Autophagy as a mediator of chemotherapy-induced cell death in cancer. *Biochem Pharmacol* 2011; **82**: 427-434 [PMID: 21704023 DOI: 10.1016/j.bcp.2011.06.015]
- 26 **Tanaka A**, Matsumura E, Yosikawa H, Uchida T, Machidera N, Kubo R, Okuno K, Koh K, Watatani M, Yasutomi M. An evaluation of neural invasion in esophageal cancer. *Surg Today* 1998; **28**: 873-878 [PMID: 9744393 DOI: 10.1007/s005950050245]
- 27 **Ayala GE**, Dai H, Ittmann M, Li R, Powell M, Frolov A, Wheeler TM, Thompson TC, Rowley D. Growth and survival mechanisms associated with perineural invasion in prostate cancer. *Cancer Res* 2004; **64**: 6082-6090 [PMID: 15342391 DOI: 10.1158/0008-5472.CAN-04-0838]
- 28 **Ozaki H**, Hiraoka T, Mizumoto R, Matsuno S, Matsumoto Y, Nakayama T, Tsunoda T, Suzuki T, Monden M, Saitoh Y, Yamauchi H, Ogata Y. The prognostic significance of lymph node metastasis and intrapancreatic perineural invasion in pancreatic cancer after curative resection. *Surg Today* 1999; **29**: 16-22 [PMID: 9934826 DOI: 10.1007/BF02482964]
- 29 **Schmukler E**, Grinboim E, Schokoroy S, Amir A, Wolfson E, Kloog Y, Pinkas-Kramarski R. Ras inhibition enhances autophagy,

- which partially protects cells from death. *Oncotarget* 2013; **4**: 145-155 [PMID: 23370967 DOI: 10.18632/oncotarget.703]
- 30 **Mathew R**, Karantza-Wadsworth V, White E. Role of autophagy in cancer. *Nat Rev Cancer* 2007; **7**: 961-967 [PMID: 17972889 DOI: 10.1038/nrc2254]
- 31 **Fujii S**, Mitsunaga S, Yamazaki M, Hasebe T, Ishii G, Kojima M, Kinoshita T, Ueno T, Esumi H, Ochiai A. Autophagy is activated in pancreatic cancer cells and correlates with poor patient outcome. *Cancer Sci* 2008; **99**: 1813-1819 [PMID: 18616529 DOI: 10.1111/j.1349-7006.2008.00893.x]
- P- Reviewer:** Kawakubo K, Kanda T, Rungsakulkij N, Tomizawa M  
**S- Editor:** Wei LJ **L- Editor:** Wang TQ **E- Editor:** Ma YJ





Published by **Baishideng Publishing Group Inc**  
7901 Stoneridge Drive, Suite 501, Pleasanton, CA 94588, USA  
Telephone: +1-925-223-8242  
Fax: +1-925-223-8243  
E-mail: [bpgoffice@wjgnet.com](mailto:bpgoffice@wjgnet.com)  
Help Desk: <http://www.f6publishing.com/helpdesk>  
<http://www.wjgnet.com>



ISSN 1007-9327



9 771007 932045