

# World Journal of *Gastroenterology*

*World J Gastroenterol* 2017 November 7; 23(41): 7347-7494



### ORIGINAL ARTICLE

#### Basic Study

- 7347 Reabsorption of iron into acutely damaged rat liver: A role for ferritins  
*Malik IA, Wilting J, Ramadori G, Naz N*
- 7359 Region-dependent effects of diabetes and insulin-replacement on neuronal nitric oxide synthase- and heme oxygenase-immunoreactive submucous neurons  
*Bódi N, Szalai Z, Chandrakumar L, Bagyánszki M*
- 7369 Parallel mRNA, proteomics and miRNA expression analysis in cell line models of the intestine  
*O'Sullivan F, Keenan J, Aherne S, O'Neill F, Clarke C, Henry M, Meleady P, Breen L, Barron N, Clynes M, Horgan K, Doolan P, Murphy R*

#### Retrospective Cohort Study

- 7387 Fecal calprotectin measurement is a marker of short-term clinical outcome and presence of mucosal healing in patients with inflammatory bowel disease  
*Kostas A, Siakavellas SI, Kosmidis C, Takou A, Nikou J, Maropoulos G, Vlachogiannakos J, Papatheodoridis GV, Papaconstantinou I, Bamias G*

#### Retrospective Study

- 7397 Endoscopic balloon dilation of crohn's disease strictures-safety, efficacy and clinical impact  
*Lopes S, Rodrigues-Pinto E, Andrade P, Afonso J, Baron TH, Magro F, Macedo G*
- 7407 Survival analysis based on human epidermal growth factor 2 status in stage II - III gastric cancer  
*Cho JH, Lim JY, Cho JY*
- 7415 Efficacy of postoperative adjuvant transcatheter arterial chemoembolization in hepatocellular carcinoma patients with microvascular invasion  
*Ye JZ, Chen JZ, Li ZH, Bai T, Chen J, Zhu SL, Li LQ, Wu FX*
- 7425 Value of gamma-glutamyltranspeptidase-to-platelet ratio in diagnosis of hepatic fibrosis in patients with chronic hepatitis B  
*Hu YC, Liu H, Liu XY, Ma LN, Guan YH, Luo X, Ding XC*

#### Observational Study

- 7433 Anatomic isolated caudate lobectomy: Is it possible to establish a standard surgical flow?  
*Jin Y, Wang L, Yu YQ, Zhou DE, Liu DR, Yang JJ, Peng SY, Li JT*

- 7440** Circulating miRNAs as biomarkers for severe acute pancreatitis associated with acute lung injury

*Lu XG, Kang X, Zhan LB, Kang LM, Fan ZW, Bai LZ*

**Prospective Study**

- 7450** Scoring systems for peptic ulcer bleeding: which one to use?

*Budimir I, Stojsavljević S, Baršić N, Biščanin A, Mirošević G, Bohnec S, Kirigin LS, Pavić T, Ljubičić N*

**Randomized Controlled Trial**

- 7459** Tenofovir vs lamivudine plus adefovir in chronic hepatitis B: TENOSIMP-B study

*Rodríguez M, Pascasio JM, Fraga E, Fuentes J, Prieto M, Sánchez-Antolín G, Calleja JL, Molina E, García-Buey LM, Blanco MÁ, Salmerón J, Bonet ML, Pons JA, González JM, Casado MA, Jorquera F; the TENOSIMP-B Research Group*

- 7470** Clinical outcomes of transcatheter selective superior mesenteric artery urokinase infusion therapy vs transjugular intrahepatic portosystemic shunt in patients with cirrhosis and acute portal vein thrombosis

*Jiang TT, Luo XP, Sun JM, Gao J*

**CASE REPORT**

- 7478** Extraordinary response of metastatic pancreatic cancer to apatinib after failed chemotherapy: A case report and literature review

*Li CM, Liu ZC, Bao YT, Sun XD, Wang LL*

- 7489** 3D-printed "fistula stent" designed for management of enterocutaneous fistula: An advanced strategy

*Huang JJ, Ren JA, Wang GF, Li ZA, Wu XW, Ren HJ, Liu S*

## ABOUT COVER

Editorial board member of *World Journal of Gastroenterology*, Sandro Contini, MD, Associate Professor, Department of Surgical Sciences, Faculty of Medicine, University of Parma, Parma 43126, Italy

## AIMS AND SCOPE

*World Journal of Gastroenterology* (*World J Gastroenterol*, *WJG*, print ISSN 1007-9327, online ISSN 2219-2840, DOI: 10.3748) is a peer-reviewed open access journal. *WJG* was established on October 1, 1995. It is published weekly on the 7<sup>th</sup>, 14<sup>th</sup>, 21<sup>st</sup>, and 28<sup>th</sup> each month. The *WJG* Editorial Board consists of 1375 experts in gastroenterology and hepatology from 68 countries.

The primary task of *WJG* is to rapidly publish high-quality original articles, reviews, and commentaries in the fields of gastroenterology, hepatology, gastrointestinal endoscopy, gastrointestinal surgery, hepatobiliary surgery, gastrointestinal oncology, gastrointestinal radiation oncology, gastrointestinal imaging, gastrointestinal interventional therapy, gastrointestinal infectious diseases, gastrointestinal pharmacology, gastrointestinal pathophysiology, gastrointestinal pathology, evidence-based medicine in gastroenterology, pancreatology, gastrointestinal laboratory medicine, gastrointestinal molecular biology, gastrointestinal immunology, gastrointestinal microbiology, gastrointestinal genetics, gastrointestinal translational medicine, gastrointestinal diagnostics, and gastrointestinal therapeutics. *WJG* is dedicated to become an influential and prestigious journal in gastroenterology and hepatology, to promote the development of above disciplines, and to improve the diagnostic and therapeutic skill and expertise of clinicians.

## INDEXING/ABSTRACTING

*World Journal of Gastroenterology* (*WJG*) is now indexed in Current Contents<sup>®</sup>/Clinical Medicine, Science Citation Index Expanded (also known as SciSearch<sup>®</sup>), Journal Citation Reports<sup>®</sup>, Index Medicus, MEDLINE, PubMed, PubMed Central and Directory of Open Access Journals. The 2017 edition of Journal Citation Reports<sup>®</sup> cites the 2016 impact factor for *WJG* as 3.365 (5-year impact factor: 3.176), ranking *WJG* as 29<sup>th</sup> among 79 journals in gastroenterology and hepatology (quartile in category Q2).

## FLYLEAF

### I-IX Editorial Board

## EDITORS FOR THIS ISSUE

Responsible Assistant Editor: *Xiang Li*  
Responsible Electronic Editor: *Yan Huang*  
Proofing Editor-in-Chief: *Lian-Sheng Ma*

Responsible Science Editor: *Ke Chen*  
Proofing Editorial Office Director: *Jin-Lei Wang*

NAME OF JOURNAL  
*World Journal of Gastroenterology*

ISSN  
ISSN 1007-9327 (print)  
ISSN 2219-2840 (online)

LAUNCH DATE  
October 1, 1995

FREQUENCY  
Weekly

EDITORS-IN-CHIEF  
**Damian Garcia-Olmo, MD, PhD, Doctor, Professor, Surgeon**, Department of Surgery, Universidad Autonoma de Madrid; Department of General Surgery, Fundacion Jimenez Diaz University Hospital, Madrid 28040, Spain

**Stephen C Strom, PhD, Professor**, Department of Laboratory Medicine, Division of Pathology, Karolinska Institutet, Stockholm 141-86, Sweden

**Andrzej S Tarnawski, MD, PhD, DSc (Med), Professor of Medicine, Chief Gastroenterology**, VA Long Beach Health Care System, University of California, Irvine, CA, 5901 E. Seventh Str., Long Beach,

CA 90822, United States

EDITORIAL BOARD MEMBERS  
All editorial board members resources online at <http://www.wjgnet.com/1007-9327/editorialboard.htm>

EDITORIAL OFFICE  
Jin-Lei Wang, Director  
Yuan Qi, Vice Director  
Ze-Mao Gong, Vice Director  
*World Journal of Gastroenterology*  
Baishideng Publishing Group Inc  
7901 Stoneridge Drive, Suite 501,  
Pleasanton, CA 94588, USA  
Telephone: +1-925-2238242  
Fax: +1-925-2238243  
E-mail: [editorialoffice@wjgnet.com](mailto:editorialoffice@wjgnet.com)  
Help Desk: <http://www.f6publishing.com/helpdesk>  
<http://www.wjgnet.com>

PUBLISHER  
Baishideng Publishing Group Inc  
7901 Stoneridge Drive, Suite 501,  
Pleasanton, CA 94588, USA  
Telephone: +1-925-2238242  
Fax: +1-925-2238243  
E-mail: [bpoffice@wjgnet.com](mailto:bpoffice@wjgnet.com)  
Help Desk: <http://www.f6publishing.com/helpdesk>

<http://www.wjgnet.com>

PUBLICATION DATE  
November 7, 2017

COPYRIGHT  
© 2017 Baishideng Publishing Group Inc. Articles published by this Open-Access journal are distributed under the terms of the Creative Commons Attribution Non-commercial License, which permits use, distribution, and reproduction in any medium, provided the original work is properly cited, the use is non commercial and is otherwise in compliance with the license.

SPECIAL STATEMENT  
All articles published in journals owned by the Baishideng Publishing Group (BPG) represent the views and opinions of their authors, and not the views, opinions or policies of the BPG, except where otherwise explicitly indicated.

INSTRUCTIONS TO AUTHORS  
Full instructions are available online at <http://www.wjgnet.com/bpg/gerinfo/204>

ONLINE SUBMISSION  
<http://www.f6publishing.com>

## Prospective Study

# Scoring systems for peptic ulcer bleeding: Which one to use?

Ivan Budimir, Sanja Stojšavljević, Neven Baršić, Alen Biščanin, Gorana Mirošević, Sven Bohnec, Lora Stanka Kirigin, Tajana Pavić, Neven Ljubičić

Ivan Budimir, Sanja Stojšavljević, Neven Baršić, Alen Biščanin, Tajana Pavić, Neven Ljubičić, Division of Gastroenterology, Department of Internal Medicine, "Sestre Milosrdnice" University Hospital Center, Zagreb 10000, Croatia

Gorana Mirošević, Lora Stanka Kirigin, Division of Endocrinology, Department of Internal Medicine, "Sestre Milosrdnice" University Hospital Center, Medical and Dental Faculty, University of Zagreb, Zagreb 10000, Croatia

Sven Bohnec, Gastroenterologie, Allgemeine Innere Medizin und Geriatrie, Rems-Murr Klinik Winnenden, 71364 Winnenden, Germany

ORCID number: Ivan Budimir (0000-0003-4198-8329); Sanja Stojšavljević (0000-0002-1626-3003); Neven Baršić (0000-0002-4416-4520); Alen Biščanin (0000-0003-2923-4110); Gorana Mirošević (0000-0002-9922-2687); Sven Bohnec (0000-0002-3381-3783); Lora Stanka Kirigin (0000-0001-5003-7627); Tajana Pavić (0000-0002-0370-5001); Neven Ljubičić (0000-0002-5207-4357).

**Author contributions:** Budimir I, Stojšavljević S and Baršić N contributed equally to this work; Budimir I and Ljubičić N designed the research; Budimir I, Stojšavljević S, Baršić N, Biščanin A and Pavić T performed the research; Budimir I, Stojšavljević S, Baršić N, Mirošević G, Bohnec S, Kirigin LS and Pavić T analyzed the data; Budimir I, Stojšavljević S and Baršić N wrote the paper.

**Institutional review board statement:** The study was reviewed and approved by the Ethics Board of the Clinical Hospital Center "Sestre Milosrdnice", Vinogradska cesta 29, Zagreb.

**Clinical trial registration statement:** The study was registered in the Clinical Hospital Center "Sestre Milosrdnice" clinical trials register.

**Informed consent statement:** All study participants, or their legal guardian, provided informed written consent prior to study enrollment.

**Conflict-of-interest statement:** None declared.

**Data sharing statement:** No additional data are available.

**Open-Access:** This article is an open-access article which was selected by an in-house editor and fully peer-reviewed by external reviewers. It is distributed in accordance with the Creative Commons Attribution Non Commercial (CC BY-NC 4.0) license, which permits others to distribute, remix, adapt, build upon this work non-commercially, and license their derivative works on different terms, provided the original work is properly cited and the use is non-commercial. See: <http://creativecommons.org/licenses/by-nc/4.0/>

**Manuscript source:** Unsolicited manuscript

**Correspondence to:** Sanja Stojšavljević, MD, Division of Gastroenterology, Department of Internal Medicine, "Sestre Milosrdnice" University Hospital Center, Vinogradska ul. 29, Zagreb 10000, Croatia. [sanja.stojšavljevic@kbcsm.hr](mailto:sanja.stojšavljevic@kbcsm.hr)  
Telephone: +385-1-3787178  
Fax: +385-1-3787448

**Received:** July 26, 2017

**Peer-review started:** July 26, 2017

**First decision:** August 10, 2017

**Revised:** August 24, 2017

**Accepted:** September 13, 2017

**Article in press:** September 13, 2017

**Published online:** November 7, 2017

## Abstract

### AIM

To compare the Glasgow-Blatchford score (GBS), Rockall score (RS) and Baylor bleeding score (BBS) in predicting clinical outcomes and need for interventions in patients with bleeding peptic ulcers.

### METHODS

Between January 2008 and December 2013, 1012



consecutive patients admitted with peptic ulcer bleeding (PUB) were prospectively followed. The pre-endoscopic RS, BBS and GBS, as well as the post-endoscopic diagnostic scores (RS and BBS) were calculated for all patients according to their urgent upper endoscopy findings. Area under the receiver-operating characteristics (AUROC) curves were calculated for the prediction of lethal outcome, rebleeding, needs for blood transfusion and/or surgical intervention, and the optimal cutoff values were evaluated.

## RESULTS

PUB accounted for 41.9% of all upper gastrointestinal tract bleeding, 5.2% patients died and 5.4% patients underwent surgery. By comparing the AUROC curves of the aforementioned pre-endoscopic scores, the RS best predicted lethal outcome (AUROC 0.82 *vs* 0.67 *vs* 0.63, respectively), but the GBS best predicted need for hospital-based intervention or 30-d mortality (AUROC 0.84 *vs* 0.57 *vs* 0.64), rebleeding (AUROC 0.75 *vs* 0.61 *vs* 0.53), need for blood transfusion (AUROC 0.83 *vs* 0.63 *vs* 0.58) and surgical intervention (0.82 *vs* 0.63 *vs* 0.52). The post-endoscopic RS was also better than the post-endoscopic BBS in predicting lethal outcome (AUROC 0.82 *vs* 0.69, respectively).

## CONCLUSION

The RS is the best predictor of mortality and the GBS is the best predictor of rebleeding, need for blood transfusion and/or surgical intervention in patients with PUB. There is no one 'perfect score' and we suggest that these two tests be used concomitantly.

**Key words:** Upper gastrointestinal bleeding; Peptic ulcer bleeding; Glasgow-Blatchford score; Rockall score; Baylor bleeding score

© **The Author(s) 2017.** Published by Baishideng Publishing Group Inc. All rights reserved.

**Core tip:** Endoscopic hemostasis represents the cornerstone of upper gastrointestinal bleeding treatment, and several scores have been developed for the prediction of rebleeding. This is a first study on Croatian patients to include over 1000 participants with peptic ulcer bleeding, and the aim was to compare three scores (Glasgow Blatchford score, Rockall score and Baylor bleeding score) in the prediction of peptic ulcer bleeding treatment outcome, including need for hospital-based intervention or 30-d mortality, 30-d rebleeding rate, 30-d mortality rate, and needs for surgical intervention and blood transfusion, and to find optimal cutoff values that indicate high-risk patients.

Budimir I, Stojavljević S, Baršić N, Biščanin A, Mirošević G, Bohnec S, Kirigin LS, Pavić T, Ljubičić N. Scoring systems for peptic ulcer bleeding: Which one to use? *World J Gastroenterol* 2017; 23(41): 7450-7458 Available from: URL: <http://www.wjgnet.com>

## INTRODUCTION

Upper gastrointestinal bleeding (UGIB) is a common medical emergency. Incidence rates of UGIB demonstrate variations ranging from 48 to 160 cases per 100000 population<sup>[1]</sup>. The most common causes of acute UGIB are non-variceal, where 28% to 59% are caused by peptic ulcer bleeding (PUB)<sup>[1-3]</sup>. Endoscopic hemostasis represents the cornerstone of UGIB treatment, and several scores have been developed for the prediction of clinical intervention (*i.e.* Rockall score (RS), Glasgow-Blatchford score (GBS), Baylor bleeding score (BBS), Cedars-Sinai Medical Center predictive index, Almela score, AIMS65 score)<sup>[4-14]</sup>. The recently published American College of Gastroenterology practice guidelines on the management of patients with ulcer bleeding recommend risk assessment in all patients in order to stratify them into high or low risk categories, since it may assist in initial decisions regarding the timing of endoscopy, time of discharge, and level of care<sup>[15]</sup>.

The GBS is a pre-endoscopic score and contains the following parameters: initial hemoglobin levels, urea, blood pressure, pulse, known syncope, melena, and liver or cardiac failure. Each variable has an appointed numeric value and the maximal number of points is 23 (Table 1). The GBS was designed to predict lower risk bleeds, and a GBS value of 1 or lower indicates very low risk category<sup>[8,9]</sup>. The most commonly used RS consists of a pre-endoscopic evaluation part, which includes age, signs of shock and comorbidities, along with an endoscopic part, which evaluates high-risk endoscopic characteristics as well (known as the post-endoscopic RS) (Table 2). Each variable is appointed a numeric value and every value > 2 indicates a high-risk patient<sup>[7]</sup>. The maximal pre-endoscopic RS value is 7, and the maximal post-endoscopic value is 11. The post-endoscopic RS can be calculated if bleeding is diagnosed and evaluated with upper endoscopy<sup>[7,16,17]</sup>. The BBS contains a pre-endoscopic evaluation part, which includes age, severity and duration of associated diseases, along with a post-endoscopic part, which evaluates the position and type of fresh bleeding (Table 3). The maximal pre-endoscopic BBS is 15, and the maximum total (pre-endoscopic and post-endoscopic) BBS is 24<sup>[18]</sup>.

The RS was primarily developed to predict mortality and the GBS to evaluate need for clinical intervention<sup>[6-14]</sup>. Secondly, they can be applied to assess rebleeding risk. The BBS was primarily developed to identify patients at high risk for rebleeding after endoscopic hemostasis<sup>[6,16]</sup>. In previous studies,

**Table 1** Glasgow-Blatchford score

		Assigned score
Blood urea, mmol/L	6.5-7.9	2
	8.0-9.9	3
	10.0-24.9	4
	≥ 25	6
Hemoglobin for men, g/dL	12-12.9	1
	10-11.9	3
	< 10	6
Hemoglobin for women, g/dL	10-11.9	1
	< 10	6
Systolic blood pressure, mmHg	100-109	1
	90-99	2
	< 90	3
Other markers	Pulse ≥ 100	1
	Melena	1
	Syncope	2
	Hepatic disease	2
	Cardiac failure	2

the GBS has been shown to be better than the pre-endoscopic and post-endoscopic RS in predicting the need for hospital-based intervention in patients with UGIB<sup>[6,13,19]</sup>. On the other hand, the RS appeared to be better at predicting mortality after rebleeding, contributing to more accurate diagnostics and shorter hospital stay<sup>[7,13,14]</sup>. Recent studies have shown that early endoscopy (within 24 h of presentation) is performed in only half of patients with UGIB, demonstrating the need for reliable and accurate pre-endoscopic risk assessment<sup>[6-15,20-25]</sup>.

This is the first prospective study in Croatia to include over 1000 patients with PUB, and the aim was to compare the GBS, pre-endoscopic RS and pre-endoscopic BBS, as well as the post-endoscopic RS and post-endoscopic BBS, in the prediction of PUB treatment outcome, need for hospital-based intervention (endoscopic treatment, transfusion, surgery intervention) or 30-d mortality, including 30-d rebleeding rate, 30-d mortality rate, and needs for surgical intervention and blood transfusion, and to find optimal cutoff values that indicate high-risk patients.

## MATERIALS AND METHODS

This prospective study was conducted in the University Hospital Center "Sestre Milosrdnice" that covers a population of approximately 300000 in the City of Zagreb, Croatia. All patients presenting to the Emergency Unit between January 2008 and December 2013 with hematemesis, melena, hematochezia, or blood admixture upon nasogastric insertion were considered for study enrolment. If initial work-up indicated the need for hospitalization, patients were admitted to the Interventional Gastroenterology Unit.

Upper gastrointestinal endoscopy was performed in all patients within 24 h of admission. Only patients with gastric and/or duodenal ulcers, or an ulcer at the site of gastro-enteric anastomosis found during

emergency endoscopy, without any other possible cause of bleeding were included in the study. All patients with high-risk ulcer stigmata and patients selected depending on clinical judgment received high-dose acid suppression therapy (pantoprazole or esomeprazole 80 mg as an intravenous bolus, followed by 40 mg intravenously 2 times daily or 200 mg daily in the form of continuous infusion for at least 48 h followed by 40 mg daily by mouth). The institution's ethics committee approved the study. Data was prospectively entered into a database, with patient details stored in a depersonalized manner to protect patient confidentiality.

## Data collection

The following data were collected for each patient: demographic data, history of ulcer or liver disease, coexisting and past illnesses, medication use, clinical characteristics of the bleeding episode, laboratory results, endoscopic diagnosis including stigmata of ongoing or recent hemorrhage, endoscopic intervention, medical treatment, rebleeding, surgical therapy, duration of hospitalization and cause of death. The grading of overall health and co-morbidity was performed according to the American Society of Anesthesiology (ASA) classification (grade 1, normal healthy patients; grade 2, mild systemic illness; grade 3, severe but incapacitating systemic illness; grade 4, life-threatening illness). Stigmata of hemorrhage were defined according to the Forrest classification (Forrest Ia, spurting bleeding; Forrest Ib, oozing bleeding; Forrest IIa, non-bleeding visible vessel; Forrest IIb, adherent clot; Forrest IIc, hematin on ulcer base; Forrest III, clean ulcer base).

Shock was defined as syncope or signs of shock at physical examination, including systolic blood pressure less than 100 mmHg and pulse rate more than 100 beats/min.

Post-hemorrhagic anemia was corrected with red blood cell transfusion (2 units, approximately 500 mL) at a hemoglobin threshold of 70-80 g/L.

All patients diagnosed with PUB and high-risk stigmata underwent initial hemostasis (injection of dilute epinephrine into and around the bleeding point, positioning of clips or thermal coagulation, or both, but never epinephrine alone). Two biopsy specimens were obtained from the gastric antrum and body in all patients and the presence of *Helicobacter pylori* (*H. pylori*) infection was assessed by histopathological examination of the specimens using hematoxylin-eosin (HE) stain.

All patients with negative histology for *H. pylori* at index endoscopy had a control endoscopy with repeating biopsy samples, or urea breath test (UBT), performed 2 wk after proton-pump inhibitor treatment was discontinued. Patients in whom the described protocol was not followed were excluded from the study about *H. pylori* infection.

**Table 2 Rockall score**

		Points			
	Variable	0	1	2	3
Pre-endoscopic score	Age, yr	< 60	60-79	≥ 80	
	Shock	Systolic blood pressure ≥ 100	Systolic blood pressure ≥ 100 mmHg	Systolic blood pressure < 100	
		Pulse < 100/min	Pulse ≥ 100/min		
	Comorbidity	No major comorbidity		Cardiac failure, ischemic heart disease, any major comorbidity	Renal failure, liver failure, disseminated malignancy
Post-endoscopic score	Diagnosis	Mallory-Weiss tear, no lesion identified and no signs of recent hemorrhage	All other diagnosis	Malignancy of upper gastrointestinal tract	
	Major signs of recent hemorrhage	None or dark spot only		Blood in upper gastrointestinal tract, adherent clot, visible or spurting vessel	

**Table 3 Baylor bleeding score**

Assigned score	Age, yr	No. of parallel illnesses	Severity of illnesses	Site of bleeding	Stigmata of bleeding
0	< 30	0			
1	30-49	1 or 2			Clot
2	50-59				
3	60-69				Visible vessel
4		3 or 4	Chronic	Posterior wall bulb	
5	≥ 70	≥ 5	Acute		Active bleeding
Score		Pre-endoscopic		Post-endoscopic	

Rebleeding was defined as one or more signs of recurrent bleeding, including fresh hematemesis or melena, hematochezia, aspiration of fresh blood *via* nasogastric tube, instability of vital signs, and reduction of hemoglobin levels by 2 g/dL or more, occurring 24-h after the primary bleeding was stopped.

For all patients with gastric ulcer in whom recurrent bleeding was not observed, control endoscopy was performed 4-5 d after initial hemostasis and biopsy specimens were obtained from the margins and base of gastric ulcers to exclude malignancy. Control endoscopy with histology had been planned to be performed in all patients with gastric ulcer.

Documented clinical outcomes were: need for hospital-based intervention or 30-d mortality, 30-d rebleeding, 30-d mortality and interventions (transfer to the Department of Surgery and the need for blood transfusion).

The collected data was used to calculate the GBS score, as well as the pre-endoscopic RS and pre-endoscopic BBS for each patient presenting with UGIB. The post-endoscopic RS and BBS were calculated if bleeding from gastric, duodenal or gastro-enteric ulcers was endoscopically diagnosed. Methods for calculating the GBS, RS and BBS were as previously described. Pre-endoscopic and post-endoscopic scores were separately evaluated.

### Statistical analysis

The Mann-Whitney *U*-test and Kruskal-Wallis analysis

of variance test were used to analyze differences in quantitative data. The discriminative ability of the scoring systems to predict outcomes was evaluated by receiver operating characteristics curves (ROC) with 95%CI. The areas under ROC (AUROC) curves were compared using the method of Delong *et al.*<sup>[26]</sup> (1988) for the calculation of the standard error of the Area Under the Curve (AUC) and of the difference between two AUCs. The optimal thresholds of the GBS, RS and BBS for the prediction of rebleeding, death, and needs for blood transfusion and/or surgical intervention were identified as the threshold associated with the highest Youden index<sup>[27]</sup>. A two-tailed significance level of 5% was used in all comparisons. All analyses were performed using a statistical package MedCalc for Windows, version 15.8 (MedCalc Software, Ostend, Belgium).

## RESULTS

The analysis included 2643 patients with UGIB, of that 2326 (88%) patients had non-variceal bleeding, 225 (8.5%) had variceal bleeding, and 92 (3.5%) had an unidentified cause of bleeding.

From 2418 patients with non-variceal bleeding, 41.9% (1012) had PUB; specifically, the cause of bleeding in 49% (496) was gastric ulcer, in 47% (476) duodenal ulcer, in 2.4% (24) both gastric and duodenal ulcer, and in 1.6% (16) gastro-enteric anastomosis ulcer. Endoscopic treatment was required in 58% of

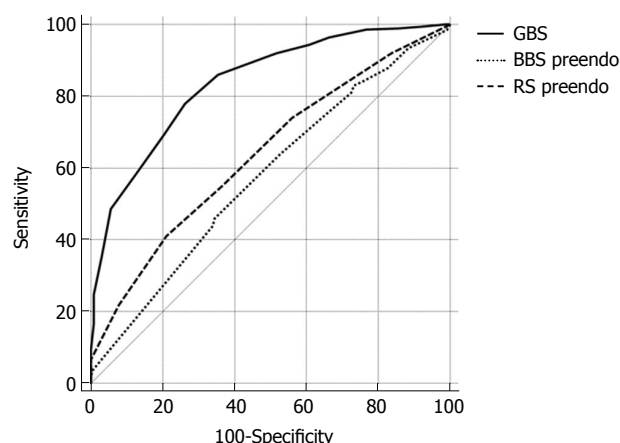


**Table 4 Patient characteristics and clinical outcomes**

Age	
Median, yr	65.3 (20-100)
Sex	
Male/Female	638 (63)/374 (37)
Findings at endoscopy	
Gastric ulcers	496 (49)
Duodenal ulcers	476 (47)
Gastric and duodenal ulcers	24 (2.4)
Ulcer on gastro-enteric anastomosis	16 (1.6)
High-risk ulcers (Forrest I a- II b)	526 (52)
Forrest I a	61 (6)
Forrest I b	111 (11)
Forrest II a	212 (21)
Forrest II b	142 (14)
Low-risk ulcers (Forrest II c-III)	486 (48)
Forrest II c	172 (17)
Forrest III	314 (31)
Hemodynamic shock	111 (11)
Comorbidity	
Ischemic and valvular heart disease	213 (21.5)
Liver disease	172 (17)
Renal failure	111 (11)
Any malignancy	131 (12.9)
Comorbidity (ASA class)	
ASA I	142 (14)
ASA II	283 (28)
ASA III-IV	587 (58)
<i>H. pylori</i>	
Tested	760 (75.1)
<i>H. pylori</i> -positive	324 (42.6)
Drugs	
Without previous therapy	433 (42.8)
NSAIDs	284 (28.1)
Acetylsalicylic acid	203 (20)
Antiplatelet therapy	31 (3.1)
Anticoagulant therapy	41 (4)
NOAC	20 (2)
Treatment	
Endoscopic therapy	587 (58)
Epinephrine	213 (36.3)
Hemoclips	156 (26.6)
Hemoclips + epinephrine	180 (30.7)
Thermocoagulation	26 (4.4)
Thermocoagulation + epinephrine	12 (2)
Repeated endoscopic therapy	71 (7)
Blood transfusion required	496 (49)
Red blood cell	406 (40.1)
Median (range), unit	2.5 (1-16)
Fresh frozen plasma	81 (8)
Median (range), unit	2 (1-6)
Platelet	9 (0.9)
Median (range), unit	6 (4-8)
Whole blood	0 (0)
Surgery	55 (5.4)
Outcome	
Rebleeding	95 (9.4)
Rebleeding (anticoag. and NOAC)	9 (14.8)
30-d mortality	53 (5.2)
Median hospital stay, d	6 (0-45)

Data are presented as *n* (%) or mean (range). ASA: American society of anesthesiology; NOAC: New(er) oral anticoagulant; NSAIDs: Non-steroidal anti-inflammatory drugs.

patients with ulcer bleeding, and in 57.3% hemostasis was achieved with hemoclips or with combination



**Figure 1 Comparison of Glasgow-Blatchford score, pre-endoscopic Rockall score and pre-endoscopic Baylor bleeding score in predicting need for hospital-based intervention or 30-d mortality.** AUROC [0.83 (95%CI: 0.81-0.86)] vs [0.63 (95%CI: 0.59-0.68)] vs [0.57 (95%CI: 0.53-0.61)]. GBS: Glasgow-Blatchford score; BBS: Baylor bleeding score; RS: Rockall score.

hemoclips/diluted epinephrine. The rate of rebleeding was 9.4%, and in patients that were on anticoagulant therapy the rebleeding rate was 14.8% ( $P = 0.245$ ), which was not statistically significant. In total, 5.4% of the patients were transferred to the Department of Surgery. The 30-d mortality was 5.2% and the median length of hospitalization was 6 d. Transfusion of red blood cells was performed in 49% of patients. Patients were predominantly men (median age 65.3). In 52% of patients, high-risk ulcers were verified (Forrest Ia-II b), 11% of the patients presented with shock, and moderate to severe comorbidity was found in 58%. Furthermore, 28.1% patients with peptic ulcer had been taking nonsteroidal anti-inflammatory drugs, 20% acetylsalicylic acid, 3.1% antiplatelet medication and 6% anticoagulant therapy.

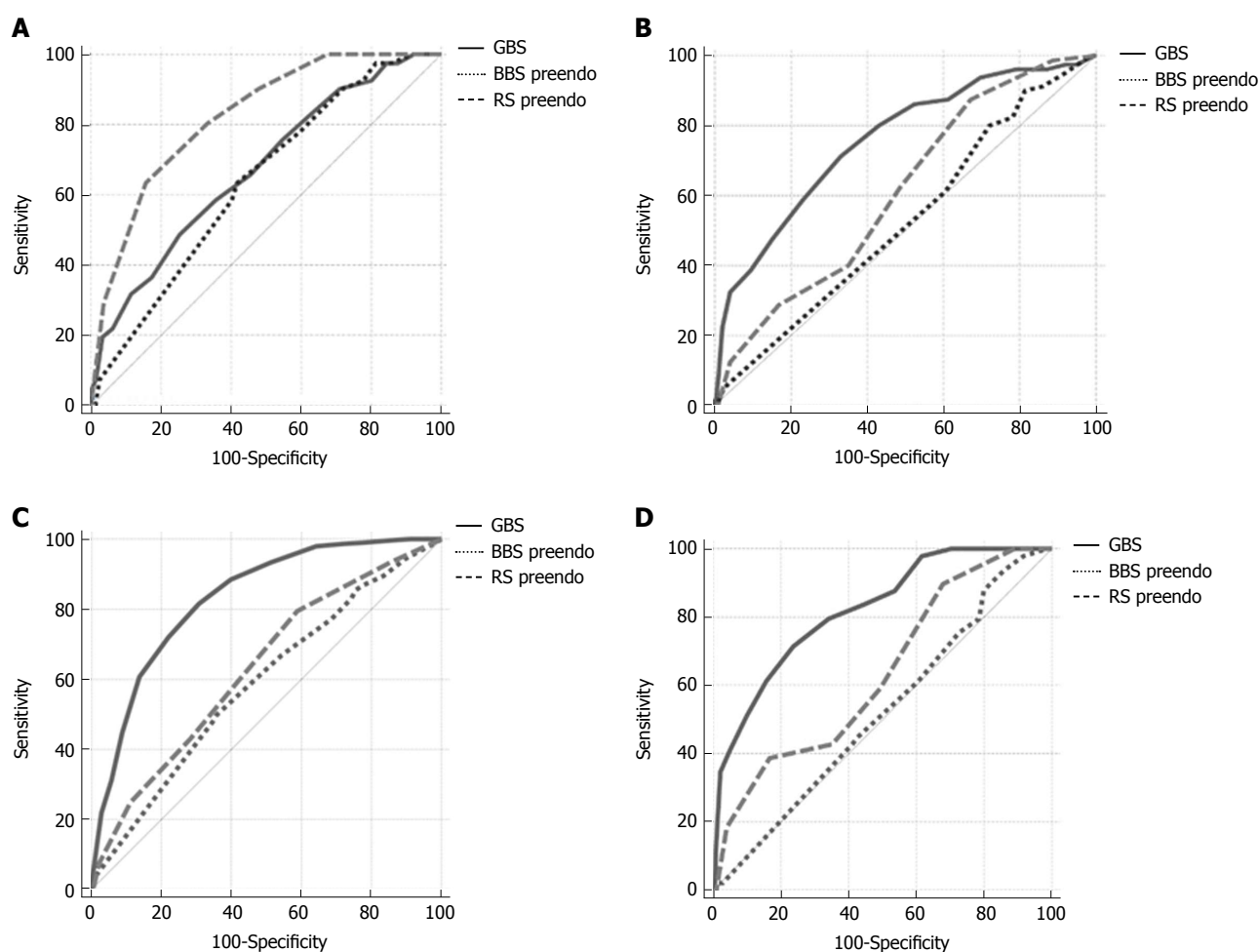
*H. pylori* testing was performed in 760 (75.1%) patients, of which 324 (42.6%) tested positive. Table 4 shows the patient characteristics and clinical outcomes.

Using ROC curve analysis we found that the GBS was clearly superior to pre-endoscopic RS and pre-endoscopic BBS, in predicting need for hospital-based intervention or 30-d mortality (AUROC 0.84 vs 0.57 vs 0.64 respectively) (Figure 1).

The cutoff value that maximized the sum of the sensitivity and specificity for predicting 30-d mortality for the pre-endoscopic RS was 4 (sensitivity 0.63, specificity 0.85, total 1.48), and 5 for the post-endoscopic RS (sensitivity 0.83, specificity 0.68, total 1.51).

Based on ROC analysis of sensitivity and specificity, the optimal cutoff value of the pre-endoscopic BBS for 30-d mortality was 8 (0.63 sensitivity, 0.58 specificity, total 1.21), and the optimal cutoff post-endoscopic BBS value for 30-d mortality was 9 (0.88 sensitivity, 0.40 specificity, total 1.28).

When assessing scores for the prediction of lethal outcome in patients with PUB, the pre-endoscopic



**Figure 2** Comparison of the Glasgow-Blatchford score, pre-endoscopic Rockall score and pre-endoscopic Baylor bleeding score for the prediction of death, recurrent bleeding, transfusion or surgical intervention. A: AUROC [0.67 (95%CI: 0.64-0.70)] vs [0.82 (95%CI: 0.79-0.84)] vs [0.63 (95%CI: 0.60-0.66)]; B: AUROC [0.75 (95%CI: 0.72-0.78)] vs [0.61 (95%CI: 0.57-0.64)] vs [0.52 (95%CI: 0.49-0.56)]; C: AUROC [0.83 (95%CI: 0.80-0.85)] vs [0.63 (95%CI: 0.59-0.66)] vs [0.58 (95%CI: 0.55-0.62)]; D: AUROC [0.82 (95%CI: 0.79-0.84)] vs [0.63 (95%CI: 0.60-0.66)] vs [0.52 (95%CI: 0.48-0.55)]. GBS: Glasgow-Blatchford score; BBS: Baylor bleeding score; RS: Rockall score.

RS was superior compared to the GBS and the pre-endoscopic BBS (AUROC 0.82 vs 0.67 vs 0.63, respectively) (Figure 2A).

Based on the ROC analysis of sensitivity and specificity, the optimal cutoff GBS value for 30-d mortality was 12 (0.49 sensitivity, 0.75 specificity, total 1.24), for rebleeding 11 (0.71 sensitivity, 0.67 specificity, total 1.38), for blood transfusion 9 (0.71 sensitivity, 0.67 specificity, total 1.38) and for surgery 12 (0.71 sensitivity, 0.76 specificity, total 1.47).

The GBS score was superior to the pre-endoscopic RS and BBS in the prediction of rebleeding (AUROC 0.75 vs 0.61 vs 0.52) (Figure 2B).

The GBS score was superior to the pre-endoscopic RS and BBS in predicting the need for blood transfusion (AUROC 0.83 vs 0.63 vs 0.59, respectively) (Figure 2C) and transfer to the Department of Surgery (AUROC 0.82 vs 0.63 vs 0.52, respectively) (Figure 2D). Also, the post-endoscopic RS was superior to the post-endoscopic BBS (AUROC 0.82 vs 0.69) in the prediction of lethal outcome (Figure 3A).

There was no significant difference between the

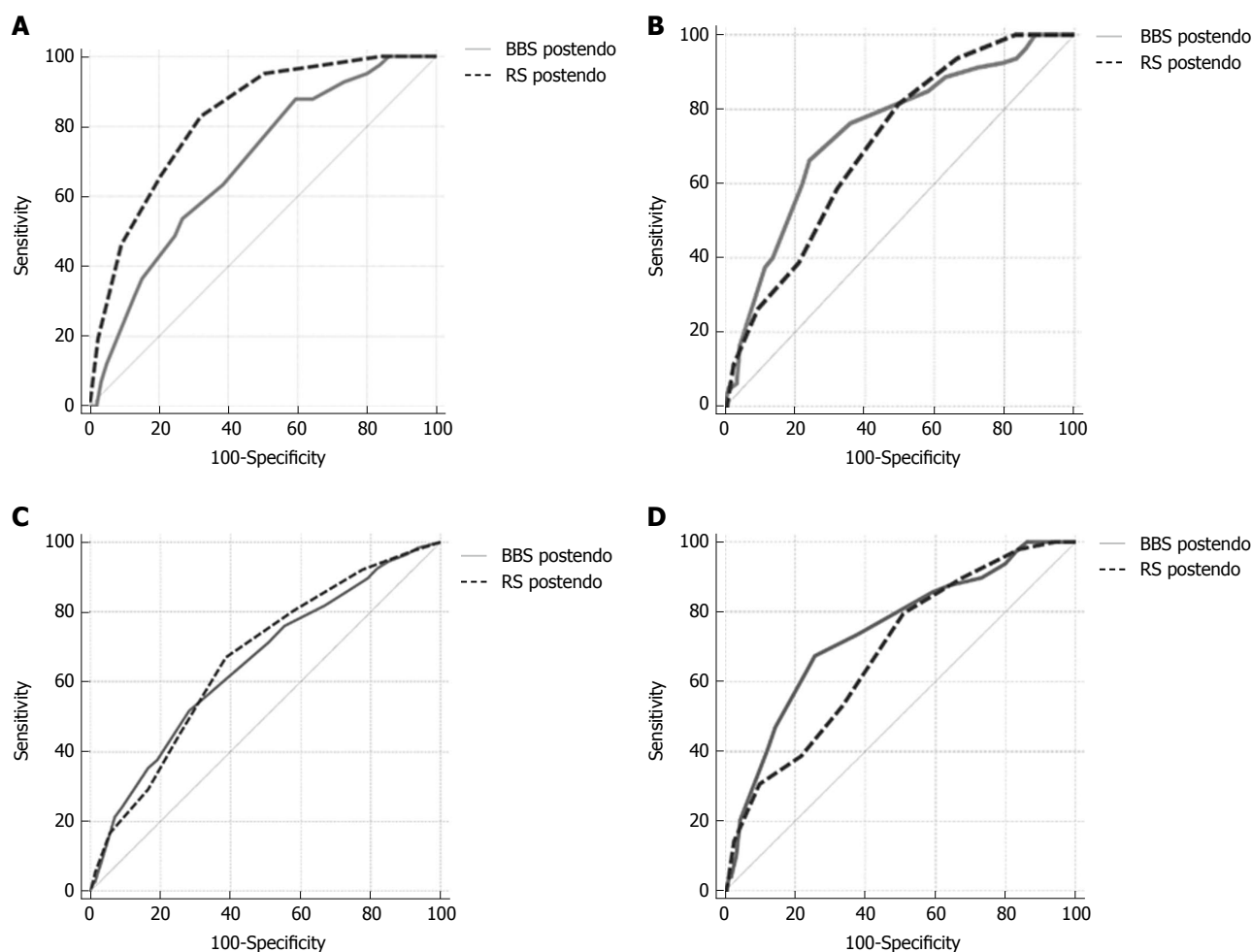
post-endoscopic RS and BBS in the prediction of rebleeding (AUROC 0.70 vs 0.73) (Figure 3B).

The rebleeding cutoff point that maximized the sum of the sensitivity and specificity for the pre-endoscopic BBS was 3 (sensitivity 0.90, specificity 0.19, total 1.09), and 11 for the post-endoscopic BBS (sensitivity 0.66, specificity 0.76, total 1.42).

There was no significant difference between the post-endoscopic RS and BBS in predicting the need for blood transfusion (AUROC 0.68 vs 0.71) (Figure 3C) and transfer to the Department of Surgery (AUROC 0.68 vs 0.74) (Figure 3D).

## DISCUSSION

UGIB is the most important cause of emergency gastroenterological admissions and the most frequent condition requiring emergency endoscopy<sup>[1]</sup>. The most common causes of acute UGIB are non-variceal, of which 30% to 60% are attributed to PUB<sup>[28]</sup>. In our study, 42% of all non-variceal bleeding was caused by PUB. In order to assess the adequate timing of



**Figure 3** Comparison of the post-endoscopic Rockall score and post-endoscopic Baylor bleeding score for the prediction of death recurrent bleeding, transfusion or surgical intervention. AUROC: [0.82 (95%CI: 0.79-0.84)] vs [0.69 (95%CI: 0.65-0.72)]; B: AUROC [0.70 (95%CI: 0.67-0.73)] vs [0.73 (95%CI: 0.70-0.76)]; C: AUROC [0.66 (95%CI: 0.62-0.70)] vs [0.65 (95%CI: 0.61-0.69)]; D: AUROC [0.68 (95%CI: 0.65-0.71)] vs [0.74 (95%CI: 0.71-0.77)]. BBS: Baylor bleeding score; RS: Rockall score.

endoscopy and selection of patients for hospital admission, several scoring systems for risk estimation have been developed. With the array of available scoring systems, it is often difficult to select the ideal scoring system for a particular patient or clinical outcome of interest. Therefore, in this study, we compared the performance of these scoring systems in the risk assessment of various clinical outcomes.

Our study showed that the GBS is superior to the pre-endoscopic RS and BBS in predicting need for hospital-based intervention or 30-d mortality. This is in concordance with the results from a study by Laursen<sup>[22]</sup> and a study by Bryant *et al.*<sup>[19]</sup>. Our study also showed that the GBS is superior to the pre-endoscopic RS and BBS in predicting peptic ulcer re-bleeding. An explanation for why the GBS best predicts peptic ulcer rebleeding is that it incorporates hemoglobin and serum urea values. Serum urea is a good biochemical marker for UGIB because it rises rapidly when there is catabolism of isoleucine-poor hemoglobin<sup>[8,29]</sup>. The maximal level of hemoglobin and urea account for half of the maximal sum of points in

the GBS score.

Our study showed that there is no significant difference between the post-endoscopic BBS and post-endoscopic RS in predicting peptic ulcer rebleeding. This is in concordance with the results from a study by Laursen *et al.*<sup>[6]</sup>. Similar data was published by Italian and Dutch researchers, who also found low values under the ROC curve [(0.59-0.68) and 0.61] and concluded that the RS is not appropriate for prediction of rebleeding<sup>[16,30]</sup>.

Our study showed that the GBS is superior to the pre-endoscopic RS and pre-endoscopic BBS in predicting the needs for blood transfusion and/or transfer to the Department of Surgery. The ROC curve for GBS rebleeding was similar to the GBS ROC curve for blood transfusion requirement and transfer to the Department of Surgery because peptic ulcer rebleeding is the main cause of blood transfusion requirement and need for surgical intervention. Bryant *et al.*<sup>[19]</sup> published similar data.

Our study showed that the pre-endoscopic RS was superior to the GBS and pre-endoscopic BBS

in predicting mortality. The RS best predicted fatal outcome because it incorporated the majority of risk factors (age, shock, moderate to severe co-morbidities and high-risk endoscopic signs for rebleeding), which was valuable in a multivariate analysis of risk for fatal outcome<sup>[7,13,30,31]</sup>. Our study showed that the post-endoscopic RS is superior to the post-endoscopic BBS in predicting lethal outcome in patients with PUB. Laursen<sup>[22]</sup> did not find any significant difference in AUROC among post-endoscopic BBS and post-endoscopic RS.

According to studies by Hyett *et al.*<sup>[14]</sup> and Bryant *et al.*<sup>[19]</sup>, the GBS cutoff points for high-risk of lethal outcome and rebleeding were  $\geq 10$  and  $\geq 12$ , respectively. In a recent retrospective study, Lim *et al.*<sup>[32]</sup> suggested urgent endoscopy in the first 13 h after clinical presentation in high-risk patients with GBS  $> 12$ , in the first 24 h in patients with GBS  $> 7$  and for patients with GBS values between 4 and 7 urgent endoscopy in the first 24 h is recommended, but not necessary.

Our cutoff points for high-risk of rebleeding and lethal outcome in PUB patients are significantly different in comparison with original research papers (GBS  $\geq 2$ , pre-endoscopic BBS  $> 5$ , post-endoscopic BBS  $\geq 10$ , post-endoscopic RS  $\geq 4$ ), which all refer to UGIB<sup>[6-9,13,14]</sup>. An explanation for this could be that the original series included an unselected group of patients with UGIB, with a significant proportion of patients with a low-risk of death, recurrent bleeding, and needs for blood transfusion and/or surgical intervention. These were patients that presented with low-risk bleeding ulcers (Forrest II c and Forrest III), Mallory-Weiss syndrome, ulcerative esophagitis, angiodysplasia and portal hypertensive gastropathy.

When considering possible limitations of our study, there is always a certain level of subjectivity in the endoscopic classification of ulcers and variation in endoscopic treatment. Furthermore, our study had a relatively short follow-up period of 30 d.

By comparing the ROC curves of the aforementioned pre-endoscopic scores, the RS proved to be the best score for predicting lethal outcome. The post-endoscopic RS was also better than the post-endoscopic BBS in predicting lethal outcome in patients with PUB. On the other hand, among the three pre-endoscopic scores, the GBS best predicted need for hospital-based intervention or 30-d mortality, rebleeding, and needs for blood transfusion and/or surgical intervention.

## COMMENTS

### Background

This paper delivers a prospective single-center study, with a sample size of more than 1000 patients, that compared the scoring systems of the Glasgow-Blatchford score, Rockall score and Baylor bleeding score in predicting clinical outcomes and need for interventions in patients with bleeding peptic ulcers.

### Research frontiers

Endoscopic hemostasis represents the cornerstone of upper gastrointestinal bleeding treatment, and several scores have been developed for the prediction of rebleeding.

### Innovations and breakthroughs

The authors concluded that although there is no 'perfect score', the Rockall score is the best predictor of mortality and the Glasgow-Blatchford score is the best predictor of need for hospital-based intervention or 30-d mortality, rebleeding, and needs for blood transfusion and/or surgical intervention in patients with peptic ulcer bleeding.

### Peer-review

A detailed description is provided to allow other investigators to reproduce or validate the results. The statistical methods used are appropriate. The results provide sufficient experimental evidence to draw firm scientific conclusions. The discussion is well organized and provides systematic theoretical analysis and valuable conclusions.

## REFERENCES

- 1 **Holster IL**, Kuipers EJ. Management of acute nonvariceal upper gastrointestinal bleeding: current policies and future perspectives. *World J Gastroenterol* 2012; **18**: 1202-1207 [PMID: 22468083 DOI: 10.3748/wjg.v18.i11.1202]
- 2 **Hearnshaw SA**, Logan RF, Lowe D, Travis SP, Murphy MF, Palmer KR. Acute upper gastrointestinal bleeding in the UK: patient characteristics, diagnoses and outcomes in the 2007 UK audit. *Gut* 2011; **60**: 1327-1335 [PMID: 21490373 DOI: 10.1136/gut.2010.228437]
- 3 **Bardou M**, Benhabrou-Brun D, Le Ray I, Barkun AN. Diagnosis and management of nonvariceal upper gastrointestinal bleeding. *Nat Rev Gastroenterol Hepatol* 2012; **9**: 97-104 [PMID: 22230903 DOI: 10.1038/nrgastro.2011.260]
- 4 **Laine L**, Jensen DM. Management of patients with ulcer bleeding. *Am J Gastroenterol* 2012; **107**: 345-360; quiz 361 [PMID: 22310222 DOI: 10.1038/ajg.2011.480]
- 5 **Gralnek IM**, Dumonceau JM, Kuipers EJ, Lanas A, Sanders DS, Kurien M, Rotondano G, Hucl T, Dinis-Ribeiro M, Marmo R, Racz I, Arezzo A, Hoffmann RT, Lesur G, de Franchis R, Aabakken L, Veitch A, Radaelli F, Salgueiro P, Cardoso R, Maia L, Zullo A, Cipolletta L, Hassan C. Diagnosis and management of nonvariceal upper gastrointestinal hemorrhage: European Society of Gastrointestinal Endoscopy (ESGE) Guideline. *Endoscopy* 2015; **47**: a1-46 [PMID: 26417980 DOI: 10.1055/s-0034-1393172]
- 6 **Laursen SB**, Hansen JM, Schaffalitzky de Muckadell OB. The Glasgow Blatchford score is the most accurate assessment of patients with upper gastrointestinal hemorrhage. *Clin Gastroenterol Hepatol* 2012; **10**: 1130-1135.e1 [PMID: 22801061 DOI: 10.1016/j.cgh.2012.06.022]
- 7 **Rockall TA**, Logan RF, Devlin HB, Northfield TC. Risk assessment after acute upper gastrointestinal haemorrhage. *Gut* 1996; **38**: 316-321 [PMID: 8675081]
- 8 **Blatchford O**, Murray WR, Blatchford M. A risk score to predict need for treatment for upper-gastrointestinal haemorrhage. *Lancet* 2000; **356**: 1318-1321 [PMID: 11073021 DOI: 10.1016/S0140-6736(00)02816-6]
- 9 **Blatchford O**, Davidson LA, Murray WR, Blatchford M, Pell J. Acute upper gastrointestinal haemorrhage in west of Scotland: case ascertainment study. *BMJ* 1997; **315**: 510-514 [PMID: 9329304]
- 10 **Forrest JA**, Finlayson ND, Shearman DJ. Endoscopy in gastrointestinal bleeding. *Lancet* 1974; **2**: 394-397 [PMID: 4136718]
- 11 **Budimir I**, Gradišer M, Nikolić M, Baršić N, Ljubičić N, Kralj D, Budimir I Jr. Glasgow Blatchford, pre-endoscopic Rockall and AIMS65 scores show no difference in predicting rebleeding rate and mortality in variceal bleeding. *Scand J Gastroenterol* 2016; **51**: 1375-1379 [PMID: 27356670 DOI: 10.1080/00365521.2016.1200138]



- 12 **Almela P**, Benages A, Peiró S, Añón R, Pérez MM, Peña A, Pascual I, Mora F. A risk score system for identification of patients with upper-GI bleeding suitable for outpatient management. *Gastrointest Endosc* 2004; **59**: 772-781 [PMID: 15173788]
- 13 **Stanley AJ**, Dalton HR, Blatchford O, Ashley D, Mowat C, Cahill A, Gaya DR, Thompson E, Warshaw U, Hare N, Groome M, Benson G, Murray W. Multicentre comparison of the Glasgow Blatchford and Rockall Scores in the prediction of clinical end-points after upper gastrointestinal haemorrhage. *Aliment Pharmacol Ther* 2011; **34**: 470-475 [PMID: 21707681 DOI: 10.1111/j.1365-2036.2011.04747.x]
- 14 **Hyett BH**, Abougergi MS, Charpentier JP, Kumar NL, Brozovic S, Claggett BL, Travis AC, Saltzman JR. The AIMS65 score compared with the Glasgow-Blatchford score in predicting outcomes in upper GI bleeding. *Gastrointest Endosc* 2013; **77**: 551-557 [PMID: 23357496 DOI: 10.1016/j.gie.2012.11.022]
- 15 **Barkun AN**, Bardou M, Kuipers EJ, Sung J, Hunt RH, Martel M, Sinclair P; International Consensus Upper Gastrointestinal Bleeding Conference Group. International consensus recommendations on the management of patients with nonvariceal upper gastrointestinal bleeding. *Ann Intern Med* 2010; **152**: 101-113 [PMID: 20083829 DOI: 10.7326/0003-4819-152-2-201001190-00009]
- 16 **Vreeburg EM**, Terwee CB, Snel P, Rauws EA, Bartelsman JF, Meulen JH, Tytgat GN. Validation of the Rockall risk scoring system in upper gastrointestinal bleeding. *Gut* 1999; **44**: 331-335 [PMID: 10026316]
- 17 **Masaoka T**, Suzuki H, Hori S, Aikawa N, Hibi T. Blatchford scoring system is a useful scoring system for detecting patients with upper gastrointestinal bleeding who do not need endoscopic intervention. *J Gastroenterol Hepatol* 2007; **22**: 1404-1408 [PMID: 17716345 DOI: 10.1111/j.1440-1746.2006.04762.x]
- 18 **Saeed ZA**, Ramirez FC, Hepps KS, Cole RA, Graham DY. Prospective validation of the Baylor bleeding score for predicting the likelihood of rebleeding after endoscopic hemostasis of peptic ulcers. *Gastrointest Endosc* 1995; **41**: 561-565 [PMID: 7672549]
- 19 **Bryant RV**, Kuo P, Williamson K, Yam C, Schoeman MN, Holloway RH, Nguyen NQ. Performance of the Glasgow-Blatchford score in predicting clinical outcomes and intervention in hospitalized patients with upper GI bleeding. *Gastrointest Endosc* 2013; **78**: 576-583 [PMID: 23790755 DOI: 10.1016/j.gie.2013.05.003]
- 20 **Srirajaskanthan R**, Conn R, Bulwer C, Irving P. The Glasgow Blatchford scoring system enables accurate risk stratification of patients with upper gastrointestinal haemorrhage. *Int J Clin Pract* 2010; **64**: 868-874 [PMID: 20337750 DOI: 10.1111/j.1742-1241.2009.02267.x]
- 21 **Cameron EA**, Pratap JN, Sims TJ, Inman S, Boyd D, Ward M, Middleton SJ. Three-year prospective validation of a pre-endoscopic risk stratification in patients with acute upper-gastrointestinal haemorrhage. *Eur J Gastroenterol Hepatol* 2002; **14**: 497-501 [PMID: 11984147]
- 22 **Laursen SB**. Treatment and prognosis in peptic ulcer bleeding. *Dan Med J* 2014; **61**: B4797 [PMID: 24547604]
- 23 **Hearnshaw SA**, Logan RF, Lowe D, Travis SP, Murphy MF, Palmer KR. Use of endoscopy for management of acute upper gastrointestinal bleeding in the UK: results of a nationwide audit. *Gut* 2010; **59**: 1022-1029 [PMID: 20357318 DOI: 10.1136/gut.2008.174599]
- 24 **Maggio D**, Barkun AN, Martel M, Elouali S, Gralnek IM; Reason Investigators. Predictors of early rebleeding after endoscopic therapy in patients with nonvariceal upper gastrointestinal bleeding secondary to high-risk lesions. *Can J Gastroenterol* 2013; **27**: 454-458 [PMID: 23936874]
- 25 **Imperiale TF**, Dominitz JA, Provenzale DT, Boes LP, Rose CM, Bowers JC, Musick BS, Azzouz F, Perkins SM. Predicting poor outcome from acute upper gastrointestinal hemorrhage. *Arch Intern Med* 2007; **167**: 1291-1296 [PMID: 17592103 DOI: 10.1001/archinte.167.12.1291]
- 26 **DeLong ER**, DeLong DM, Clarke-Pearson DL. Comparing the areas under two or more correlated receiver operating characteristic curves: a nonparametric approach. *Biometrics* 1988; **44**: 837-845 [PMID: 3203132]
- 27 **Youden WJ**. Index for rating diagnostic tests. *Cancer* 1950; **3**: 32-35 [PMID: 15405679]
- 28 **van Leerdam ME**. Epidemiology of acute upper gastrointestinal bleeding. *Best Pract Res Clin Gastroenterol* 2008; **22**: 209-224 [PMID: 18346679 DOI: 10.1016/j.bpg.2007.10.011]
- 29 **Olde Damink SW**, Dejong CH, Deutz NE, van Berlo CL, Soeters PB. Upper gastrointestinal bleeding: an ammoniagenic and catabolic event due to the total absence of isoleucine in the haemoglobin molecule. *Med Hypotheses* 1999; **52**: 515-519 [PMID: 10459831 DOI: 10.1054/mehy.1998.0026]
- 30 **Camellini L**, Merighi A, Pagnini C, Azzolini F, Guazzetti S, Scarcelli A, Manenti F, Rigo GP. Comparison of three different risk scoring systems in non-variceal upper gastrointestinal bleeding. *Dig Liver Dis* 2004; **36**: 271-277 [PMID: 15115340 DOI: 10.1016/j.dld.2003.10.017]
- 31 **Kim BJ**, Park MK, Kim SJ, Kim ER, Min BH, Son HJ, Rhee PL, Kim JJ, Rhee JC, Lee JH. Comparison of scoring systems for the prediction of outcomes in patients with nonvariceal upper gastrointestinal bleeding: a prospective study. *Dig Dis Sci* 2009; **54**: 2523-2529 [PMID: 19104934 DOI: 10.1007/s10620-008-0654-7]
- 32 **Lim LG**, Ho KY, Chan YH, Teoh PL, Khor CJ, Lim LL, Rajnakova A, Ong TZ, Yeoh KG. Urgent endoscopy is associated with lower mortality in high-risk but not low-risk nonvariceal upper gastrointestinal bleeding. *Endoscopy* 2011; **43**: 300-306 [PMID: 21360421 DOI: 10.1055/s-0030-1256110]

**P- Reviewer:** Beales ILP, Chiu KW, Huang CM, Sugimoto M  
**S- Editor:** Ma YJ **L- Editor:** Filipodia **E- Editor:** Huang Y







Published by **Baishideng Publishing Group Inc**  
7901 Stoneridge Drive, Suite 501, Pleasanton, CA 94588, USA  
Telephone: +1-925-223-8242  
Fax: +1-925-223-8243  
E-mail: [bpgoffice@wjgnet.com](mailto:bpgoffice@wjgnet.com)  
Help Desk: <http://www.f6publishing.com/helpdesk>  
<http://www.wjgnet.com>



ISSN 1007-9327

