

# World Journal of *Hepatology*

*World J Hepatol* 2018 February 27; 10(2): 172-351



### REVIEW

- 172 Glycogenic hepatopathy: A narrative review  
*Sherigar JM, Castro JD, Yin YM, Guss D, Mohanty SR*
- 186 Hepatitis C virus: Morphogenesis, infection and therapy  
*Morozov VA, Lagaye S*
- 213 Cell fusion in the liver, revisited  
*Lizier M, Castelli A, Montagna C, Lucchini F, Vezzoni P, Faggioli F*
- 222 Management of bacterial infection in the liver transplant candidate  
*Ferrarese A, Zanetto A, Becchetti C, Sciarrone SS, Shalaby S, Germani G, Gambato M, Russo FP, Burra P, Senzolo M*
- 231 Digital liver biopsy: Bio-imaging of fatty liver for translational and clinical research  
*Mancini M, Summers P, Fata F, Brunetto MR, Callea F, De Nicola A, Di Lascio N, Farinati F, Gastaldelli A, Gridelli B, Mirabelli P, Neri E, Salvadori PA, Rebelos E, Tiribelli C, Valenti L, Salvatore M, Bonino F*
- 246 Alkaline sphingomyelinase (NPP7) in hepatobiliary diseases: A field that needs to be closely studied  
*Duan RD*

### MINIREVIEWS

- 254 Spontaneous bacterial and fungal peritonitis in patients with liver cirrhosis: A literature review  
*Shizuma T*
- 267 Impact of direct acting antivirals on occurrence and recurrence of hepatocellular carcinoma: Biologically plausible or an epiphenomenon?  
*Butt AS, Sharif F, Abid S*

### ORIGINAL ARTICLE

#### Basic Study

- 277 Homologous recombination mediates stable *Fah* gene integration and phenotypic correction in tyrosinaemia mouse-model  
*Junge N, Yuan Q, Huang Vu T, Krooss S, Bednarski C, Balakrishnan A, Cathomen T, Manns MP, Baumann U, Sharma AD, Ott M*
- 287 Multipotent stromal cells stimulate liver regeneration by influencing the macrophage polarization in rat  
*Elchaninov A, Fatkhudinov T, Usman N, Arutyunyan I, Makarov A, Lokhonina A, Eremina I, Surovtsev V, Goldshtein D, Bolshakova G, Glinkina V, Sukhikh G*

- 297 Morphological and biochemical effects of weekend alcohol consumption in rats: Role of concentration and gender

*Morales-González JA, Sernas-Morales ML, Morales-González Á, González-López LL, Madrigal-Santillán EO, Vargas-Mendoza N, Fregoso-Aguilar TA, Anguiano-Robledo L, Madrigal-Bujaidar E, Álvarez-González I, Chamorro-Cevallos G*

#### Retrospective Cohort Study

- 308 Survival outcomes of liver transplantation for hepatocellular carcinoma in patients with normal, high and very high preoperative alpha-fetoprotein levels

*She WH, Chan ACY, Cheung TT, Lo CM, Chok KSH*

#### Clinical Practice Study

- 319 Hepatitis C virus knowledge improves hepatitis C virus screening practices among primary care physicians

*Samuel ST, Martinez AD, Chen Y, Markatou M, Talal AH*

#### Observational Study

- 329 Outcomes assessment of hepatitis C virus-positive psoriatic patients treated using pegylated interferon in combination with ribavirin compared to new Direct-Acting Antiviral agents

*Damiani G, Franchi C, Pigatto P, Altomare A, Pacifico A, Petrou S, Leone S, Pace MC, Fiore M*

#### META-ANALYSIS

- 337 Outcomes of kidney transplantation in patients with hepatitis B virus infection: A systematic review and meta-analysis

*Thongprayoon C, Kaewput W, Sharma K, Wijarnpreecha K, Leeaphorn N, Ungprasert P, Sakhuja A, Cabeza Rivera FH, Cheungpasitporn W*

#### CASE REPORT

- 347 Primary hepatic peripheral T-cell lymphoma associated with Epstein-Barr viral infection

*Ramai D, Ofori E, Nigar S, Reddy M*

**ABOUT COVER**

Editorial Board Member of *World Journal of Hepatology*, Ji Won Kim, MD, PhD, Associate Professor, Department of Internal Medicine, Seoul National University College of Medicine, SMG-SNU Medical Center, Seoul 156-707, South Korea

**AIM AND SCOPE**

*World Journal of Hepatology* (*World J Hepatol*, *WJH*, online ISSN 1948-5182, DOI: 10.4254), is a peer-reviewed open access academic journal that aims to guide clinical practice and improve diagnostic and therapeutic skills of clinicians.

*WJH* covers topics concerning liver biology/pathology, cirrhosis and its complications, liver fibrosis, liver failure, portal hypertension, hepatitis B and C and inflammatory disorders, steatohepatitis and metabolic liver disease, hepatocellular carcinoma, biliary tract disease, autoimmune disease, cholestatic and biliary disease, transplantation, genetics, epidemiology, microbiology, molecular and cell biology, nutrition, geriatric and pediatric hepatology, diagnosis and screening, endoscopy, imaging, and advanced technology. Priority publication will be given to articles concerning diagnosis and treatment of hepatology diseases. The following aspects are covered: Clinical diagnosis, laboratory diagnosis, differential diagnosis, imaging tests, pathological diagnosis, molecular biological diagnosis, immunological diagnosis, genetic diagnosis, functional diagnostics, and physical diagnosis; and comprehensive therapy, drug therapy, surgical therapy, interventional treatment, minimally invasive therapy, and robot-assisted therapy.

We encourage authors to submit their manuscripts to *WJH*. We will give priority to manuscripts that are supported by major national and international foundations and those that are of great basic and clinical significance.

**INDEXING/ABSTRACTING**

*World Journal of Hepatology* is now indexed in Emerging Sources Citation Index (Web of Science), PubMed, PubMed Central, and Scopus.

**EDITORS FOR THIS ISSUE**

Responsible Assistant Editor: *Xiang Li*  
Responsible Electronic Editor: *Rui-Fang Li*  
Proofing Editor-in-Chief: *Lian-Sheng Ma*

Responsible Science Editor: *Li-Jun Cui*  
Proofing Editorial Office Director: *Xiu-Xia Song*

**NAME OF JOURNAL**  
*World Journal of Hepatology*

**ISSN**  
ISSN 1948-5182 (online)

**LAUNCH DATE**  
October 31, 2009

**FREQUENCY**  
Monthly

**EDITOR-IN-CHIEF**  
**Wan-Long Chuang, MD, PhD, Doctor, Professor,** Hepatobiliary Division, Department of Internal Medicine, Kaohsiung Medical University Hospital, Kaohsiung Medical University, Kaohsiung 807, Taiwan

**EDITORIAL BOARD MEMBERS**  
All editorial board members resources online at <http://www.wjgnet.com/1948-5182/editorialboard.htm>

**EDITORIAL OFFICE**  
Xiu-Xia Song, Director

*World Journal of Hepatology*  
Baishideng Publishing Group Inc  
7901 Stoneridge Drive, Suite 501,  
Pleasanton, CA 94588, USA  
Telephone: +1-925-2238242  
Fax: +1-925-2238243  
E-mail: [editorialoffice@wjgnet.com](mailto:editorialoffice@wjgnet.com)  
Help Desk: <http://www.f6publishing.com/helpdesk>  
<http://www.wjgnet.com>

**PUBLISHER**  
Baishideng Publishing Group Inc  
7901 Stoneridge Drive, Suite 501,  
Pleasanton, CA 94588, USA  
Telephone: +1-925-2238242  
Fax: +1-925-2238243  
E-mail: [bpgoffice@wjgnet.com](mailto:bpgoffice@wjgnet.com)  
Help Desk: <http://www.f6publishing.com/helpdesk>  
<http://www.wjgnet.com>

**PUBLICATION DATE**  
February 27, 2018

**COPYRIGHT**

© 2018 Baishideng Publishing Group Inc. Articles published by this Open Access journal are distributed under the terms of the Creative Commons Attribution Non-commercial License, which permits use, distribution, and reproduction in any medium, provided the original work is properly cited, the use is non commercial and is otherwise in compliance with the license.

**SPECIAL STATEMENT**

All articles published in journals owned by the Baishideng Publishing Group (BPG) represent the views and opinions of their authors, and not the views, opinions or policies of the BPG, except where otherwise explicitly indicated.

**INSTRUCTIONS TO AUTHORS**

<http://www.wjgnet.com/bpg/gerinfo/204>

**ONLINE SUBMISSION**

<http://www.f6publishing.com>

Basic Study

## Multipotent stromal cells stimulate liver regeneration by influencing the macrophage polarization in rat

Andrey Elchaninov, Timur Fatkhudinov, Natalia Usman, Irina Arutyunyan, Andrey Makarov, Anastasia Lokhonina, Irina Eremina, Viktor Surovtsev, Dmitry Goldshtein, Galina Bolshakova, Valeria Glinkina, Gennady Sukhikh

Andrey Elchaninov, Timur Fatkhudinov, Natalia Usman, Irina Arutyunyan, Andrey Makarov, Anastasia Lokhonina, Gennady Sukhikh, National Medical Research Center for Obstetrics, Gynecology and Perinatology named after Academician V.I.Kulakov of Ministry of Healthcare of Russian Federation, Moscow 117997, Russia

Andrey Elchaninov, Timur Fatkhudinov, Anastasia Lokhonina, Irina Eremina, Viktor Surovtsev, Peoples Friendship University of Russia (RUDN University), Moscow 117198, Russia

Irina Arutyunyan, Galina Bolshakova, Scientific Research Institute of Human Morphology, Moscow 117418, Russia

Andrey Makarov, Valeria Glinkina, Pirogov Russian National Research Medical University, Ministry of Healthcare of the Russian Federation, Moscow 117997, Russia

Dmitry Goldshtein, Research Center of Medical Genetics, Moscow 115478, Russia

ORCID number: Andrey Elchaninov (0000-0002-2392-4439); Timur Fatkhudinov (0000-0002-6498-5764); Natalia Usman (0000-0002-5999-8843); Irina Arutyunyan (0000-0002-4344-8943); Andrey Makarov (0000-0003-2133-2293); Anastasia Lokhonina (0000-0001-8077-2307); Irina Eremina (0000-0001-5444-9231); Viktor Surovtsev (0000-0003-0653-572X); Dmitry Goldshtein (0000-0002-3876-1097); Galina Bolshakova (0000-0002-9669-0821); Valeria Glinkina (0000-0001-8708-6940); Gennady Sukhikh (0000-0003-0214-1213).

**Author contributions:** Elchaninov A and Fatkhudinov T contributed to study conception and design; Elchaninov A, Usman N and Arutyunyan I contributed to data acquisition, data analysis and interpretation; Elchaninov A, Makarov A, Lokhonina A, Eremina I, Surovtsev V, Goldshtein D, Bolshakova G, Glinkina V and Sukhikh G contributed to data acquisition, data analysis and interpretation; Elchaninov A, Fatkhudinov T and Usman N contributed to editing, reviewing and final approval of article.

Supported by Russian Science Foundation, No. 17-15-01419.

**Institutional review board statement:** The study was approved

by the Ethical Review Board at the Scientific Research Institute of Human Morphology, Protocol No. 16, November 19, 2015 (Moscow, Russian Federation).

**Institutional animal care and use committee statement:** All experimental work involving animals was carried out according to the standards of laboratory practice (National Guidelines No.267 by Ministry of Healthcare of the Russian Federation).

**Conflict-of-interest statement:** The authors do not have any commercial or other association that might pose a conflict of interest.

**Data sharing statement:** No additional data are available.

**Open-Access:** This article is an open-access article which was selected by an in-house editor and fully peer-reviewed by external reviewers. It is distributed in accordance with the Creative Commons Attribution Non Commercial (CC BY-NC 4.0) license, which permits others to distribute, remix, adapt, build upon this work non-commercially, and license their derivative works on different terms, provided the original work is properly cited and the use is non-commercial. See: <http://creativecommons.org/licenses/by-nc/4.0/>

**Manuscript source:** Invited manuscript

**Correspondence to:** Timur Fatkhudinov, DSc, MD, PhD, Academic Research, Laboratory of Regenerative Medicine, National Medical Research Center for Obstetrics, Gynecology and Perinatology named after Academician V.I.Kulakov of Ministry of Healthcare of Russian Federation, 4 Oparina Street, Moscow 117997, Russia. [tfat@yandex.ru](mailto:tfat@yandex.ru)

**Telephone:** +7-903-2561157

**Fax:** +7-495-4388507

**Received:** September 18, 2017

**Peer-review started:** September 20, 2017

**First decision:** October 31, 2017

**Revised:** October 31, 2017

**Accepted:** February 5, 2018

**Article in press:** February 5, 2018

**Published online:** February 27, 2018



## Abstract

### AIM

To investigate the influence of the umbilical cord-derived multipotent stromal cells (MSCs) on recovery of the liver after the subtotal resection, that is, removal of 80% of the organ mass, a renowned model of the small-for-size liver remnant syndrome.

### METHODS

The MSCs were obtained from the intervacular tissue of umbilical cords, dissected from rat fetuses, by the explant culture technique. The vital labeling of MSCs with PKH26 was carried out on the 3rd passage. The subtotal resection was performed on male Sprague-Dawley rats. The experimental group animals received a transplant  $10^6$  MSCs infused into the spleen. Hepatocyte proliferation was assessed by counting of either mitotic figures or Ki67-positive cells in microscopic images. MSC differentiation was assessed with antibodies to hepatocyte-specific marker cytokeratin 18 (CK18), cholangiocyte-specific protein CK19, smooth muscle cell-specific protein  $\alpha$ -SMA, the endothelial cell marker CD31, or the active fibroblast marker FAP $\alpha$ . Total macrophages of the liver were selectively stained in cryosections incubated with anti-CD68 antibodies (1:100, Abcam), while the M2a and M2c macrophage populations were selectively stained with anti-CD206 antibodies. Expression of interleukin and growth factor genes was evaluated with PCR-RT.

### RESULTS

Intrasplenic allogeneic transplantation of the umbilical cord-derived multipotent stromal cells stimulates reparative processes within the residual liver tissue after subtotal resection (removal of 80% of the organ mass), as indicated by increased rates of hepatocyte proliferation and accelerated organ mass recovery. These effects may result from paracrine influence of the transplanted cells on the resident macrophage population of the liver. The transplantation favors polarization of macrophages to M2 phenotype (the M2-polarized macrophages specifically express CD206; they are known to suppress inflammation and support tissue repair). No differentiation of the transplanted cells into any of the liver cell types have been observed in the study.

### CONCLUSION

We found no direct evidence for the paracrine effect of MSCs on liver regeneration after the subtotal liver resection in rats. However, the paracrine mechanism of the therapeutic activity of transplanted MSC is indirectly indicated by a decrease in the total number of CD68 + macrophages and an increase in the proportion of M2 pro-repair macrophages in the regenerating liver as compared to animals in which the transplantation was only mimicked.

**Key words:** Liver; Regeneration; Multipotent stromal cells; Macrophages

© The Author(s) 2018. Published by Baishideng Publishing Group Inc. All rights reserved.

**Core tip:** Umbilical cord-derived multipotent stromal cells stimulate reparative processes within the liver after subtotal resection (removal of 80% of the organ mass). Multipotent stromal cells stimulate hepatocyte proliferation in rats after subtotal resection and favor polarization of macrophages to M2 phenotype. The transplanted multipotent stromal cells do not differentiate into any of the liver cell types under these conditions.

Elchaninov A, Fatkhudinov T, Usman N, Arutyunyan I, Makarov A, Lokhonina A, Eremina I, Surovtsev V, Goldshtein D, Bolshakova G, Glinkina V, Sukhikh G. Multipotent stromal cells stimulate liver regeneration by influencing the macrophage polarization in rat. *World J Hepatol* 2018; 10(2): 287-296 Available from: URL: <http://www.wjgnet.com/1948-5182/full/v10/i2/287.htm> DOI: <http://dx.doi.org/10.4254/wjh.v10.i2.287>

## INTRODUCTION

Multipotent stromal cells (MSCs) are found to be a helpful supplement in various repair processes in mammals, particularly in solid organs<sup>[1]</sup>. These cells are considered as a promising tool of regenerative medicine<sup>[2]</sup>. Their ability to stimulate reparative regeneration of damaged liver have been confirmed<sup>[3]</sup>, but the mechanisms remain uncertain.

The experimentally proven enhancement of liver regeneration by MSCs must be essentially paracrine, because their transplantation to residual livers causes an increase in concentrations of HGF and several other growth factors within the regenerating tissues<sup>[4]</sup>. Therapeutic activity of MSCs is apparently related to their anti-inflammatory properties, which also represent a sort of paracrine regulation, as manifested by a local increase in IL-4, IL-13, and TSG-6 production paralleled by relative shortage of TNF $\alpha$  and IL-6<sup>[5]</sup>. Modulation of inflammatory reactions may be implemented *via* influence of these, or similar, paracrine factors on immune cells, especially on macrophages<sup>[6,7]</sup>. Several studies, however, confirm the ability of MSCs to differentiate into hepatocytes, which may support quite a different explanation for the positive influence of MSCs on liver repair<sup>[3,8]</sup>.

In a number of clinical cases, a residual portion of the liver left after an extended resection, *e.g.*, due to a tumor or metastasis, or even a transplanted portion of donor liver tissue supposed to replace the bulk of liver tissue in the host, is too small to effectively support the body homeostasis<sup>[9]</sup>. The resulting post-hepatectomy liver failure is a major manifestation of the small-for-size liver remnant syndrome, when the critically reduced liver mass is not only insufficient to maintain normal liver function, but also incapable of compensatory growth. The

problem could be solved by some specific controllable stimulation of this growth combined with intensive liver care and management for acute hepatic failure.

This study deals with influence of the umbilical cord-derived MSCs on the reparative regeneration of the liver after the subtotal resection, that is, removal of the 80% organ mass, a renowned model of the small-for-size liver remnant syndrome.

## MATERIALS AND METHODS

Outbred male Sprague-Dawley rats, body weight 250–270 g, were obtained from the Institute for Bioorganic Chemistry branch animal facilities (Pushchino, Moscow region, Russia). All experimental work involving animals was carried out according to the standards of laboratory practice (National Guidelines No. 267 by Ministry of Healthcare of the Russia, June 1, 2003), and all efforts were made to minimize suffering. The study was approved by the Ethical Review Board at the Scientific Research Institute of Human Morphology (Protocol No. 16, November 19, 2015).

The MSCs were obtained from the intervacular tissue of umbilical cords, dissected from rat fetuses, by the explant culture technique. Their identity as MSCs was verified by their capacity of clonogenic growth on the untreated plastic, expression of specific set of surface antigens, and their ability to differentiate into mesodermal derivatives (Arutyunyan *et al.*<sup>[2]</sup>, 2016). The vital labeling of MSCs with PKH26 (Sigma-Aldrich Co LLC, United States) was carried out on the 3rd passage. The labeled cells were washed twice with saline (PanEco, Russia) and transferred to culture dishes for the labeling quality assessment or into syringes for transplantation to experimental animals.

The animals ( $n = 83$ ) were operated as described earlier<sup>[15]</sup>. Hepatic tissue from sham-operated animals ( $n = 43$ ) served as additional control in the assessment of hepatocyte proliferation, immunostaining and genes expression.

Animal survival was calculated as (the total number of operated animals minus the number of spontaneous deaths divided by the total number of operated animals. The animals were drawn from the experiment in CO<sub>2</sub>-chamber at 3 h, 6 h, 24 h, 48 h, 3 d, 7 d, or 10 d after the surgery (5–6 animals for each term) between 9 am and 11 am. The regenerating livers were promptly dissected, weighed (along with the whole animal, to determine the liver-to-total mass ratio, with intact animals of similar age ( $n = 10$ ) being used for comparison), and preserved for analysis. A part of the material was fixed in 10% buffered formalin for a routine histological procedure (dehydration, paraffin sectioning, HE staining, mounting, and microscopy). Another part of the material was frozen in liquid nitrogen for *in vivo* cell tracing and/or immunochemistry (see below).

### Hepatocyte proliferation assessment

Hepatocyte proliferation was assessed by counting of

either mitotic figures or Ki67-positive cells in microscopic images.

Mitotic index of hepatocytes was calculated for each animal individually as a number of mitoses per  $6 \times 10^3$  hepatocytes, expressed in promille (‰).

Ki67-positive cells were counted on cryosections immunostained with corresponding primary antibodies followed by FITC-conjugated secondary antibodies, both supplied by Abcam, United Kingdom, and used in 1:100 and 1:200 dilutions, respectively; cell nuclei were counterstained with DAPI (Sigma-Aldrich Co LLC). The Ki67 proliferation index was calculated for each animal individually as a number of Ki67-positive hepatocytes per  $3 \times 10^3$  hepatocytes.

### MSC differentiation assessment

The cryosections were stained with antibodies to hepatocyte-specific marker cytokeratin 18 (CK18), cholangiocyte-specific protein CK19, smooth muscle cell-specific protein  $\alpha$ -SMA, the endothelial cell marker CD31, or the active fibroblast marker FAP $\alpha$ . All of the primary antibodies were obtained from Abcam and used in 1:100 dilutions as recommended by the manufacturer and followed by FITC-conjugated secondary antibodies (1:200, Abcam); cell nuclei were counterstained with DAPI (Sigma-Aldrich Co LLC). Expression of the cell type-specific proteins was meticulously sought out in MSCs identified within regenerating liver tissue by PKH26 label. The observations were done using Leica DM 4000 B fluorescent microscope with LAS AF v.3.1.0 build 8587 software (Leica Microsystems CMS GmbH, Germany).

### Selective immunostaining of macrophages

Total macrophages of the liver were selectively stained in cryosections incubated with anti-CD68 antibodies (1:100, Abcam), while the M2a and M2c macrophage populations were selectively stained with anti-CD206 antibodies (Santa-Cruz, United States) used in 1:100 dilution as recommended by the manufacturer. The signal was visualized by using FITC-conjugated secondary antibodies (1:200, Abcam) combined with DAPI-counterstaining of the nuclei. The CD68+ and CD206+ cells were counted in microscopic images and related to the total cell counts to obtain corresponding indexes of macrophage content.

### Real-time PCR assay

Total RNA was isolated with RNeasy Plus Mini Kit (QIAGEN). Estimated concentration of RNA in the eluate was 0.1 g/L; the quality was controlled by electrophoresis. To remove traces of genomic DNA, the samples were treated with RNase-free DNase I (Thermo Scientific, Waltham, MA, United States; 1 U per  $\mu$ g of RNA); the efficacy of DNA elimination was confirmed by PCR with nontranscribed genomic region-specific primers. Reverse transcription reactions were set up using MMLV RT Kit (Evrogen CJSC, Moscow, Russia) and held at 39 °C for 1 h.

**Table 1** Oligonucleotide sequences

Target designation	5'-end primer	3'-end primer
<i>Il1β</i>	CTGTCGTACCCATGTGAGCT	ACTCCACTTGGTCTTGACTT
<i>Il6</i>	TACATATGTTCTCAGGGA GAT	GGTAGAAACGGAACCTCCAG
<i>Il10</i>	GCCCAGAAATCAAGGAGCAT	TGAGTGTACGTAGGCTT CTA
<i>Tnfr</i>	CCACCACGCTCTTCGTCTA	GCTACGGGCTTGCTACTCG
<i>Hgf</i>	GGCCATGGTGCTACACTCTT	TTGTGGGGTACTGCGAATC
<i>Tgfb1</i>	CCGCAACAACGCAATCTATG	AGCCCTGTATCCGTCTCCTT
<i>Actβ</i>	GAGATTACTGCCCTGGCTCC	GCTCAGTAACAGTCCGCCTA
<i>B2m</i>	CTCGCTCGGTGACCGTGAT	GGACAGATCTGACATCTCGA
<i>Gapdh</i>	GCGAGATCCCGCTAACATCA	CCCTTCCACGATGCCAAAGT

**Table 2** Liver-to-body weight ratio dynamics (Mean ± SD, %)

Time after operation, d	Multipotent stromal cells transplantation group	Comparison group
Intact controls	4.5 ± 0.9	
3	1.8 ± 0.3	1.4 ± 0.1 <sup>a</sup>
7	2.4 ± 0.7	2.7 ± 0.3 <sup>a</sup>
10	3.1 ± 0.2	2.6 ± 0.2 <sup>a</sup>

<sup>a</sup>*P* > 0.05.

PCR mixtures based on qPCRmix-HS SYBR system (Evrogen CJSC) containing oligonucleotide primers (custom made by SYNTOL, Moscow, Russia) in 0.2–0.4 μmol/L final concentrations were set up in duplicates. Structures of the oligonucleotides with corresponding target symbols and descriptions are given in Table 1. Real-time PCR was carried out in DT-96 Real-Time PCR Cycler (DNA-Technology JSC, Moscow, Russia) at 95 °C 15 s, 62 °C for 10 s + reading, 72 °C for 20 s. The relative expression values were calculated by approach originally introduced (Pfaffl MW<sup>[10]</sup>, 2001) with modifications (Vandesompele J *et al.*<sup>[11]</sup>, 2002) using *actb*, *b2m*, and *gapdh* (Table 1) as reference targets.

### Statistical analysis

The data were analyzed using SigmaStat 3.5 (Systat Software Inc., Chicago, IL, United States). Proportion values were compared by 2-sample z-test; relative gene expression values were compared by the Mann-Whitney *U* test; more-than-two-groups comparisons were done using ANOVA on ranks; *P*-values < 0.05 were considered significant.

## RESULTS

### Animal survival

Some of the animals died within 3 d after the surgery, but none of them died after the 3 d timepoint, animal survival in the comparison group (72.1% ± 6.8%, *n* = 43) was significantly higher than in the MSC transplantation group (47.5% ± 7.8%, *n* = 40).

### Liver mass recovery

MSC transplantation stimulated compensatory growth of residual hepatic tissues, which was expressed in more rapid liver mass recovery (Table 2). In the MSC

transplantation group, the liver-to-body ratio returned to normal values by day 10 after the surgery, while in the comparison group it still did not reach the initial level (as measured for the intact control animals).

### Hepatocyte proliferation dynamics

Mitotic index of hepatocytes was significantly higher in the MSC transplantation group than in the comparison group on day 3 as well as on day 10 after the surgery (Figure 1A, C, D, F and G). On day 7 after the surgery, however, this index was significantly lower in the MSC transplantation group than in the comparison group (Figure 1B, E and G).

A similar tendency was revealed by using the Ki67 immunostaining (Figure 2). Although no significant differences in the Ki67 proliferation index between the groups were observed on day 3 after the surgery (Figure 2A, D and G), this index for the MSC transplantation group on day 7 was significantly lower (Figure 2B, E and G), and on day 10 significantly higher, than for the comparison group (Figure 2C, F and G).

### Differentiation of transplanted MSCs

The transplanted cells expressed neither CK18 or CK19 (Figure 3A and B), nor α-SMA (Figure 3D). Solitary CD31-expressing PKH26-labeled cells were observed at the site of injection on days 3 and 10 after the surgery (Figure 3C).

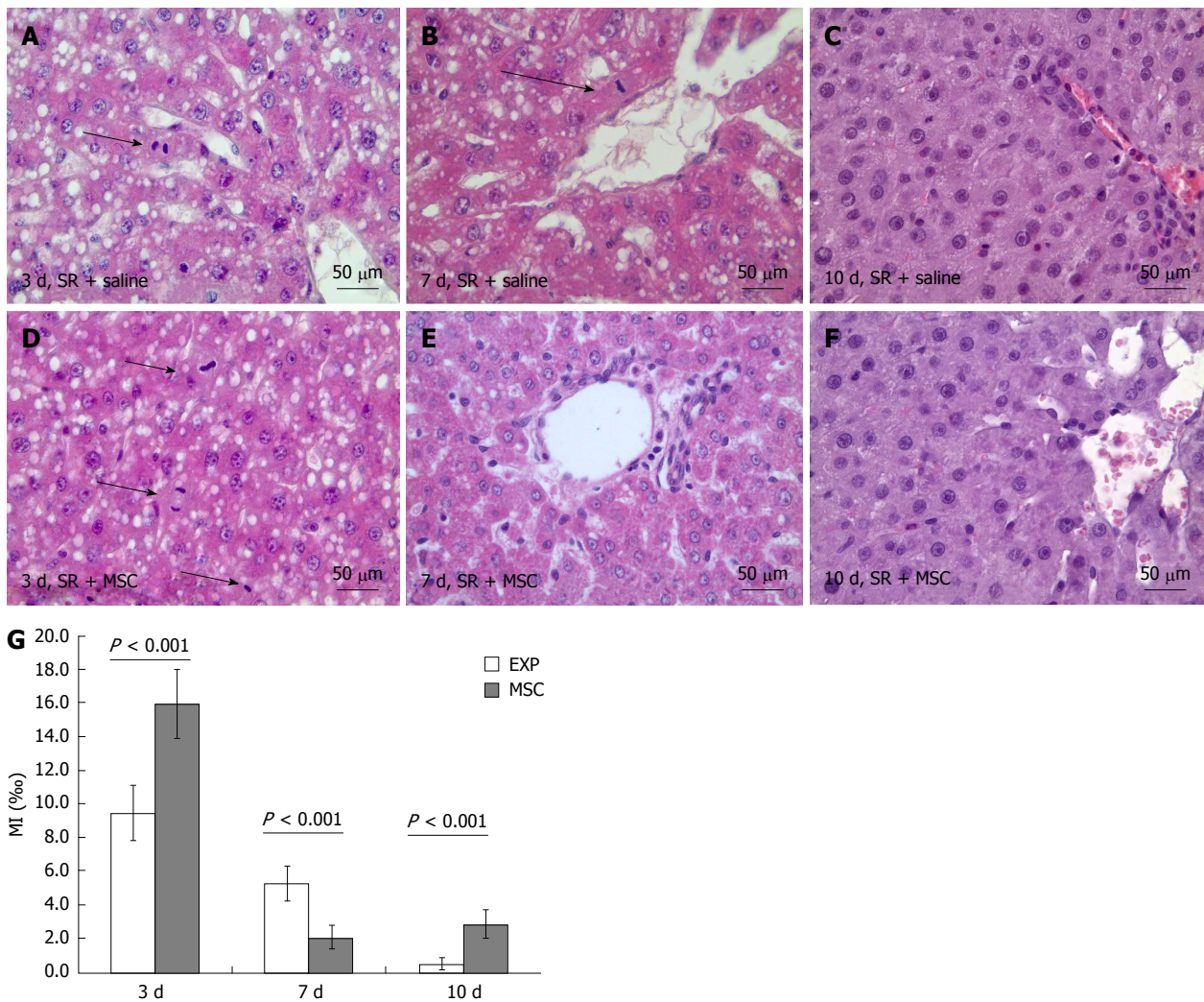
### Macrophage polarization profiles of regenerating liver

It turned out, that on day 7 after the surgery the animals of the MSC transplantation group had significantly decreased numbers of total liver macrophages defined as CD68+ cells (Figure 4A, B and E). At the same time, calculated numbers of M2 macrophages (defined as CD206+ cells) in regenerating livers on day 7 after the surgery were higher in the MSC transplantation group than in the comparison group (Figure 4C, D and F).

### Transplantation-dependent changes in gene expression

No transplantation-dependent changes in gene expression at the site of transplantation have been revealed in this study, despite that such changes were extensively sought for. We analyzed expression dynamics for a set of genes, which reportedly participate in regulation of mammalian liver recovery, and found no changes that could be related





**Figure 1** Influence of the multipotent stromal cells transplantation on mitotic activity of hepatocytes; Mitotic activity of hepatocytes in the residual livers at 3 (A, D), 7 (B, E) and 10 d (C, F) after the surgery; Mitotic index of hepatocytes is plotted against time after the surgery (G); HE staining. Arrowheads indicate mitotic figures in hepatocytes (A, B, D); Mitotic index of hepatocytes: Horizontal axis represents time elapsed after the surgery, vertical axis represents mitotic index of hepatocytes, %; White columns represent hepatocyte proliferation in the comparison group, gray columns represent hepatocyte proliferation in the multipotent stromal cells transplantation group; The data is presented as mean values with confidence intervals. SR: Subtotal resection; MSC: Multipotent stromal cells.

to the MSC transplantation (Figure 5).

## DISCUSSION

In this study we observed a stimulating effect of the umbilical cord-derived MSCs on liver regeneration after subtotal resection in rats, manifested as increased survival of the operated animals, increased rates of liver mass recovery, and increased proliferation activity of hepatocytes.

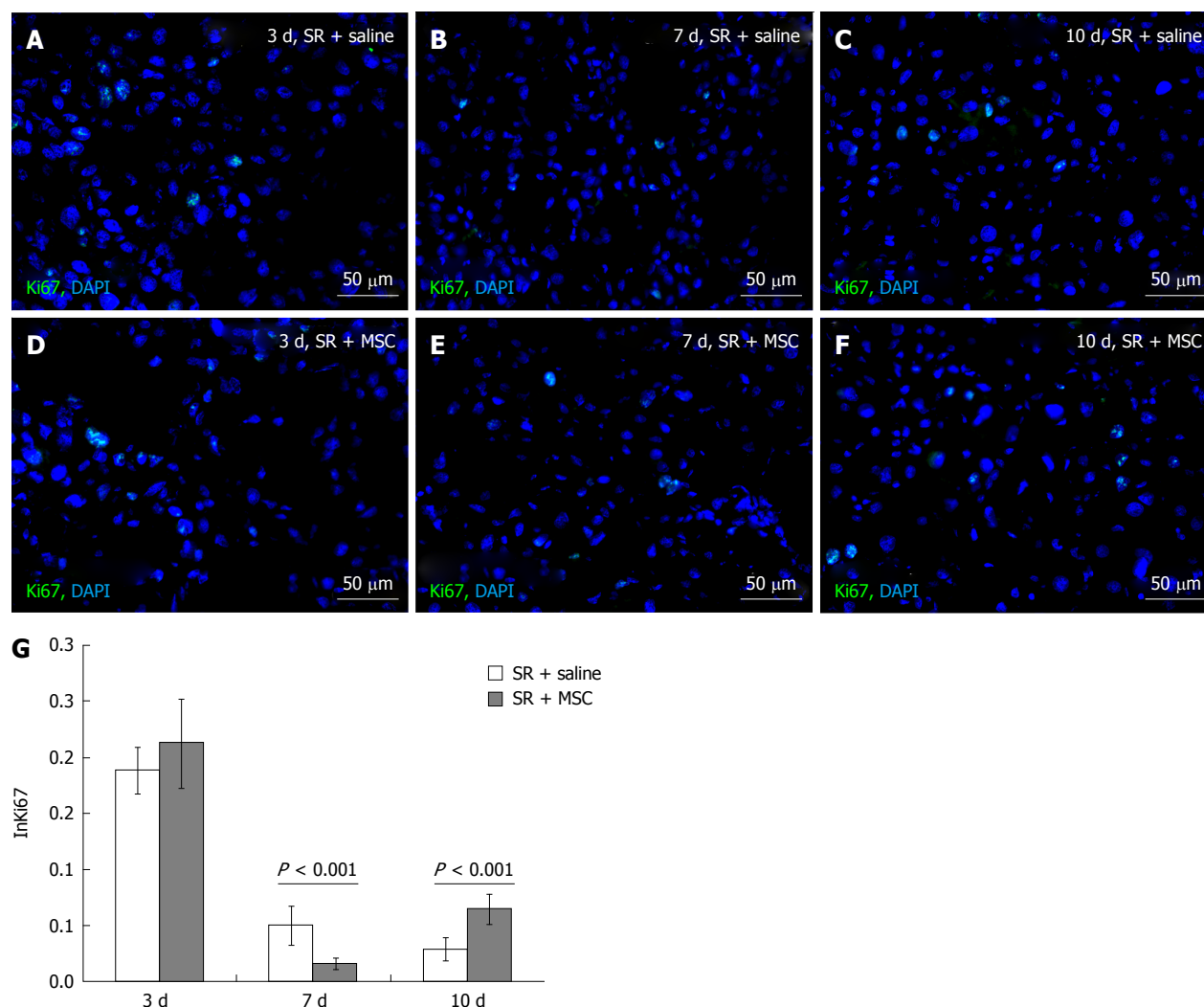
The obtained evidence of the effect of MSCs on hepatocyte proliferation is consistent with the results of other studies<sup>[4]</sup>. It should be noted that the stimulating effect MSCs on hepatocyte proliferation is, apparently, due to accelerated passage of the cell cycle phases. This is indicated by the fact that on day 3 after the subtotal liver resection combined with MSC administration (mimicked by sham injection of saline in the comparison group), the Ki67 index did not differ between the groups indicating similar extent of hepatocyte engagement

in cell cycle for both groups. At the same time, the proportion of hepatocytes undergoing mitosis per second was significantly higher in animals which received the MSCs, that is, their hepatocytes passed G1, S, and G2 phases more rapidly, to be able to divide by day 3 after the surgery. Such acceleration of cell cycles apparently led to their synchronization resulting in waves of hepatocyte proliferation with a temporary decrease in the mitotic activity of in between<sup>[12]</sup>. It is possible, that the increased rates of cell cycling in the early postoperative period were the cause of significantly better survival of animals in the MSC transplantation group.

Despite the clearly demonstrated regeneration-stimulating effect of the umbilical cord-derived MSC transplantation, exact mechanisms of this stimulation remained obscure.

However, the obtained data indicate that the replacement mechanism of stimulation of regeneration in this case is not the leading one.

The transplanted MSCs did not differentiate into



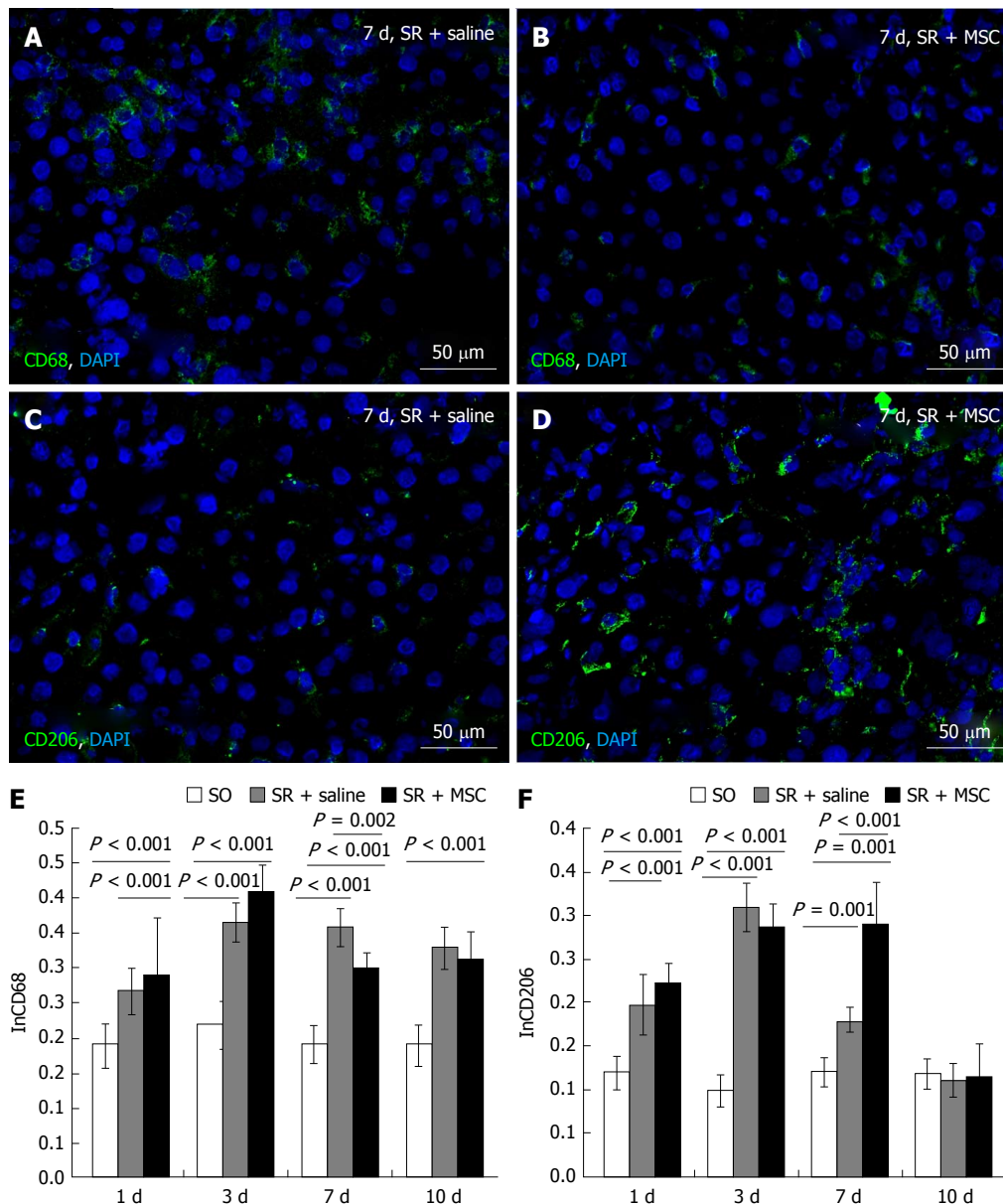
**Figure 2** Influence of the multipotent stromal cells transplantation on Ki67 index of hepatocytes. Ki67 expression in the residual livers at 3 (A, D), 7 (B, E) and 10 d (C, F) after the surgery; cell nuclei are counterstained DAPI (blue); Index of Ki67+ hepatocytes is plotted against time after the surgery (G): Horizontal axis represents time elapsed after the surgery, vertical axis represents Ki67 proliferation index (InKi67) of hepatocytes; White columns represent hepatocyte proliferation in the comparison group, gray columns represent hepatocyte proliferation in the multipotent stromal cells transplantation group; The data is presented as mean values with confidence intervals. SR: Subtotal resection; MSC: Multipotent stromal cells.

hepatocytes, cholangiocytes, smooth muscle cells, active fibroblasts, or myofibroblasts. Solitary PKH26-labeled MSCs at the site of transplantation were positive for the endothelial cell marker CD31. It is known that endothelial differentiation of MSCs is stimulated by VEGF and supported the endothelium-derived extracellular matrix; in combination they make MSCs to express the endothelium-specific markers<sup>[13]</sup>. It is also known, that the umbilical cord-derived MSCs give a stronger response to endothelial induction than the bone marrow-derived MSCs<sup>[14]</sup>. Despite that, only a minor fraction of transplanted cells could possibly differentiate into endothelial cells upon transplantation. This is consistent with our previously reported data on rapid elimination of transplanted MSCs by host macrophages. In particular, about 90% of transplanted cells in spleen and regenerating liver were destroyed by association with CD68+ cells<sup>[15]</sup>.

We found no direct evidence for the paracrine effect of MSCs on liver regeneration after the subtotal liver

resection in rats. Although MSCs show the ability to synthesize a rich set of biologically active molecules<sup>[2]</sup>, the paracrine effect provided by MSCs is dose-dependent and typically short-term, and apparently difficult to study *in vivo*. Besides, several other studies demonstrating the positive effect of MSCs on liver regeneration show that repeated administration of MSCs, as well as an "in advance" transplantation of the cells before damage, gives a stronger effect, which may have a stronger paracrine component<sup>[16,17]</sup>.

However, the paracrine mechanism of the therapeutic activity of transplanted MSC is indirectly indicated by a decrease in the total number of CD68 + macrophages and an increase in the proportion of M2 pro-repair macrophages in the regenerating liver as compared to animals in which the transplantation was only mimicked. It is known that the effect of MSC on inflammation is mediated by a local increase in IL-4, IL-13, TSG-6 and a decrease in TNF $\alpha$ , IL-6<sup>[5]</sup> influencing the immune system cells, especially macrophages<sup>[6,7]</sup>. It has been shown



**Figure 3** Influence of the transplantation on macrophage polarization profiles. CD68<sup>+</sup> cells (green) in the liver in the comparison group (A) and in the residual liver in the MSC transplantation group (B) on day 7 after the surgery. The diagram shows dynamic changes in the CD68<sup>+</sup> cell content liver in the comparison group and in the multipotent stromal cells (MSC) transplantation group (E); Relative quantities of CD206<sup>+</sup> cells (green) in the liver in the comparison group (C) and in the residual liver in the MSC transplantation group (D) on day 7 after the surgery; The diagram shows dynamic changes in the CD206<sup>+</sup> cell content in the course of regeneration; cell nuclei are counterstained with 4',6-Diamidino-2-phenylindole (blue). In E and F, white columns represent the sham-operated animals, gray columns represent the comparison group, black columns represent the MSC transplantation group, horizontal axis represents time elapsed after the surgery. SR: Subtotal resection; SO: Sham-operated animals; MSC: Multipotent stromal cells.

in many studies on various models that after MSC transplantation the number of activated macrophages of the alternative M2 phenotype (which have pro-repair and anti-inflammatory properties) increases, and the number of pro-inflammatory M1 macrophages decreases<sup>[18,19]</sup>. This is consistent with the data obtained by us on the model of liver regeneration after its subtotal resection in rats.

Exact molecular mechanisms of the paracrine effect of MSC transplantation on hepatocyte proliferation and liver macrophage behavior in the aftermath of subtotal liver resection remain unclear. Further studies in this direction are very desirable, since any possibility

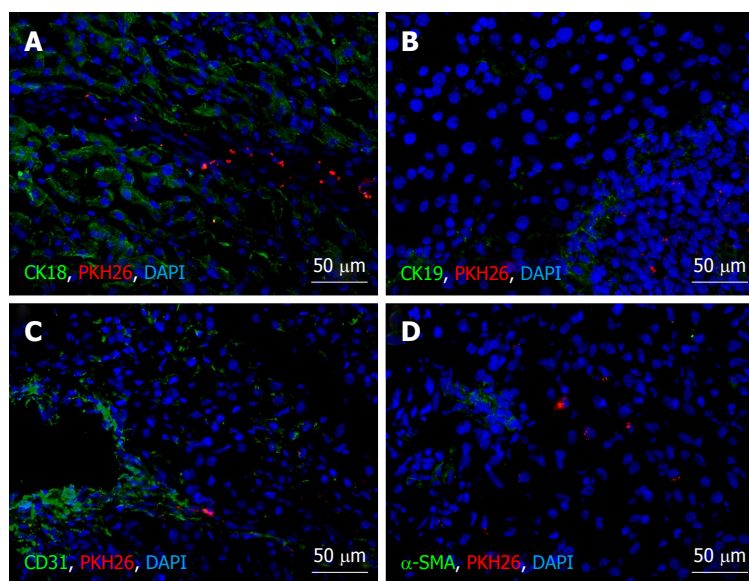
of controlling hepatocyte proliferation and/or liver macrophage polarization could be of great therapeutic importance, especially in severe liver injuries.

## ARTICLE HIGHLIGHTS

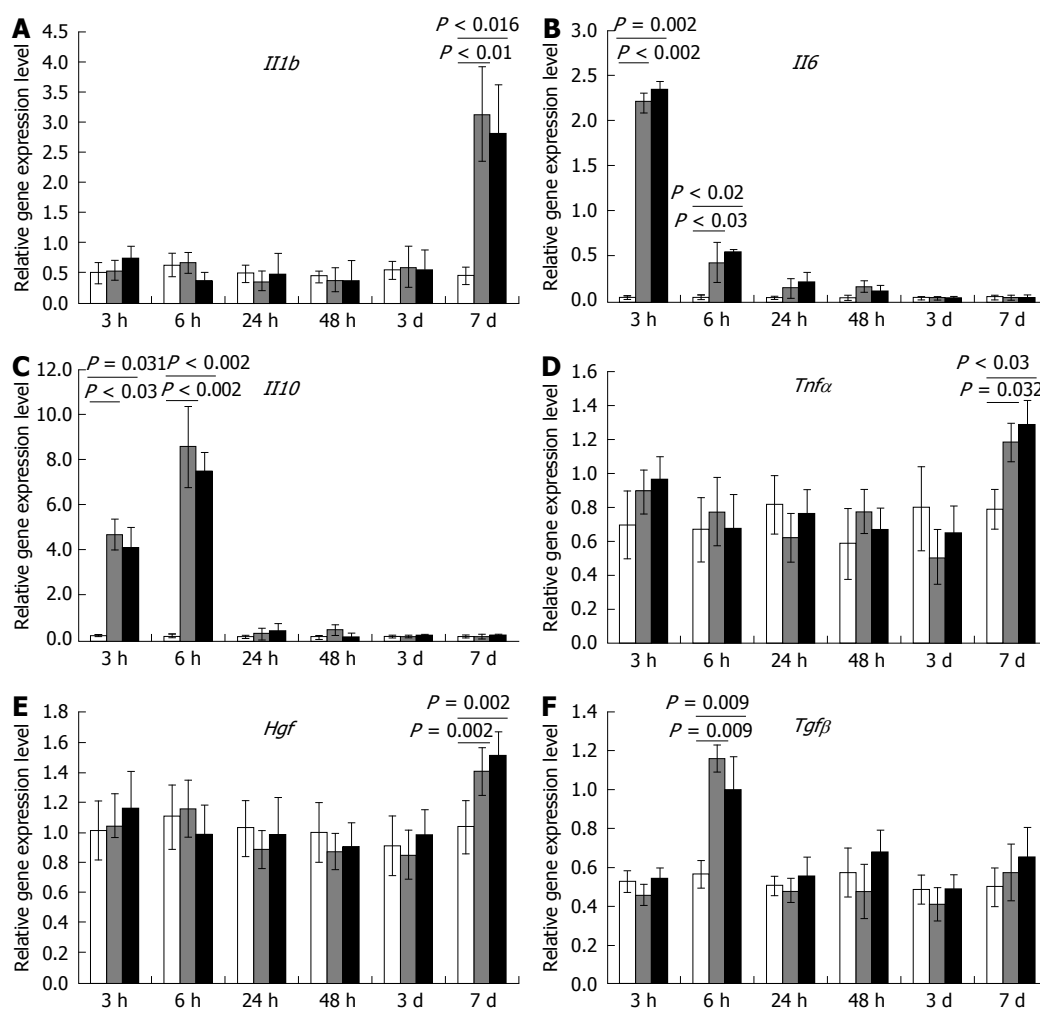
### Research background

The resulting post-hepatectomy liver failure is a major manifestation of the small-for-size liver remnant syndrome, when the critically reduced liver mass is insufficient to maintain normal liver function. The problem can be solved by some specific controllable stimulation of compensatory growth combined with intensive liver care and management for acute hepatic failure. Multipotent stromal cells may therefore represent a reasonable choice not only in cases of extensive hepatectomy but also for other types of severe liver damage (e.g.





**Figure 4** Immunofluorescence analysis of differentiation of the transplanted multipotent stromal cells on day 10 after the surgery. Immunostaining of cell type-specific proteins, A: CK18 (hepatocytes); B: CK19 (cholangiocytes); C: CD31 (endothelial cells); D:  $\alpha$ -SMA (smooth muscle cells). Fluorescent microscopy images display immunostaining (green), PKH26 label (red), and cell nuclei counterstained with 4', 6-Diamidino-2-phenylindole (blue).



**Figure 5** Influence of the transplantation on cytokine and growth factor gene expression within regenerating livers. A: *Il1b*; B: *Il6*; C: *Il10*; D: *Tnfa*; E: *Hgf*; F: *Tgfb*. White columns correspond to gene expression values (in relative units) for the sham-operated animals, gray columns represent the values for the comparison group, black columns represent the values for the Multipotent stromal cells transplantation group, horizontal axis represents time elapsed after the surgery; The data is presented as mean values with confidence intervals. SR: Subtotal resection; SO: Sham-operated animals; MSC: Multipotent stromal cells.

cirrhosis). Multipotent stromal cells are found to be a helpful supplement in various repair processes in mammals, particularly in solid organs. These cells are considered as a promising tool of regenerative medicine. Their ability to stimulate reparative regeneration of damaged liver has been confirmed, but the mechanisms remain uncertain.

### Research motivation

The experimentally proven enhancement of liver regeneration by multipotent stromal cells (MSCs) must be essentially paracrine, because their transplantation to residual livers causes an increase in concentrations of HGF and several other growth factors within the regenerating tissues. Therapeutic activity of MSCs is apparently related to their anti-inflammatory properties, which also represent a sort of paracrine regulation, as manifested by a local increase in IL-4, IL-13, and TSG-6 production paralleled by relative shortage of TNF $\alpha$  and IL-6. Modulation of inflammatory reactions may be implemented via influence of these, or similar, paracrine factors on immune cells, especially on macrophages. Several studies, however, confirm the ability of MSCs to differentiate into hepatocytes, which leads to quite a different explanation for the positive influence of MSCs on liver repair.

### Research objectives

In our experiments we found that intrasplenic allogeneic transplantation of the umbilical cord-derived multipotent stromal cells stimulated hepatocyte proliferation and organ mass recovery after subtotal resection. These effects may result from positive paracrine influence of the transplanted cells on polarization of the liver resident macrophages to M2 phenotype.

### Research methods

The MSCs were obtained from the intervacular tissue of umbilical cords, dissected from rat fetuses, by the explant culture technique. The vital labeling of MSCs with PKH26 was carried out on the 3rd passage. The subtotal resection was performed on male Sprague-Dawley rats. The experimental group animals received a transplant 106 MSCs infused into the spleen. Hepatocyte proliferation was assessed by counting of either mitotic figures or Ki67-positive cells in microscopic images. MSC differentiation was assessed with antibodies to hepatocyte-specific marker cytokeratin 18 (CK18), cholangiocyte-specific protein CK19, smooth muscle cell-specific protein  $\alpha$ -SMA, the endothelial cell marker CD31, or the active fibroblast marker FAP $\alpha$ . Total macrophages of the liver were selectively stained in cryosections incubated with anti-CD68 antibodies (1:100, Abcam), while the M2a and M2c macrophage populations were selectively stained with anti-CD206 antibodies. Expression of interleukin and growth factor genes was evaluated with PCR-RT.

### Research results

Intrasplenic allogeneic transplantation of the umbilical cord-derived multipotent stromal cells stimulates reparative processes within the residual liver tissue after subtotal resection (removal of 80% of the organ mass), as indicated by increased rates of hepatocyte proliferation and accelerated organ mass recovery. These effects may result from paracrine influence of the transplanted cells on the resident macrophage population of the liver. The transplantation favors polarization of macrophages to M2 phenotype (the M2-polarized macrophages specifically express CD206; they are known to suppress inflammation and support tissue repair). No differentiation of the transplanted cells into any of the liver cell types have been observed in the study.

### Research conclusions

In this study we observed a stimulating effect of the umbilical cord-derived MSCs on liver regeneration after subtotal resection in rats, manifested as increased survival of the operated animals, increased rates of liver mass recovery, and increased proliferation activity of hepatocytes. We found no direct evidence for the paracrine effect of MSCs on liver regeneration after the subtotal liver resection in rats. However, the paracrine mechanism of the therapeutic activity of transplanted MSC is indirectly indicated by a decrease in the total number of CD68 + macrophages and an increase in the proportion of M2 pro-repair macrophages in the regenerating liver as compared to animals in which the transplantation was only mimicked.

### Research perspectives

Exact molecular mechanisms of the paracrine effect of MSC transplantation on hepatocyte proliferation and liver macrophage behavior in the aftermath of subtotal liver resection remain unclear. Further studies in this direction are very desirable, since any possibility of controlling hepatocyte proliferation and/or liver macrophage polarization could be of great therapeutic importance, especially in severe liver injuries.

### REFERENCES

- 1 **Chistiakov DA.** Liver regenerative medicine: advances and challenges. *Cells Tissues Organs* 2012; **196**: 291-312 [PMID: 22572238 DOI: 10.1159/000335697]
- 2 **Arutyunyan I, Elchaninov A, Makarov A, Fatkhudinov T.** Umbilical Cord as Prospective Source for Mesenchymal Stem Cell-Based Therapy. *Stem Cells Int* 2016; **2016**: 6901286 [PMID: 27651799 DOI: 10.1155/2016/6901286]
- 3 **Wu XB, Tao R.** Hepatocyte differentiation of mesenchymal stem cells. *Hepatobiliary Pancreat Dis Int* 2012; **11**: 360-371 [PMID: 22893462 DOI: 10.1016/S1499-3872(12)60193-3]
- 4 **Li Q, Zhou X, Shi Y, Li J, Zheng L, Cui L, Zhang J, Wang L, Han Z, Han Y, Fan D.** In vivo tracking and comparison of the therapeutic effects of MSCs and HSCs for liver injury. *PLoS One* 2013; **8**: e62363 [PMID: 23638052 DOI: 10.1371/journal.pone.0062363]
- 5 **Sato Y, Araki H, Kato J, Nakamura K, Kawano Y, Kobune M, Sato T, Miyanishi K, Takayama T, Takahashi M, Takimoto R, Iyama S, Matsunaga T, Ohtani S, Matsuura A, Hamada H, Niitsu Y.** Human mesenchymal stem cells xenografted directly to rat liver are differentiated into human hepatocytes without fusion. *Blood* 2005; **106**: 756-763 [PMID: 15817682 DOI: 10.1182/blood-2005-02-0572]
- 6 **Burchfield JS, Dimmeler S.** Role of paracrine factors in stem and progenitor cell mediated cardiac repair and tissue fibrosis. *Fibrogenesis Tissue Repair* 2008; **1**: 4 [PMID: 19014650 DOI: 10.1186/1755-1536-1-4]
- 7 **Tögel F, Westenfelder C.** The role of multipotent marrow stromal cells (MSCs) in tissue regeneration. *Organogenesis* 2011; **7**: 96-100 [PMID: 21521944 DOI: 10.4161/org.7.2.15781]
- 8 **Liu ZC, Chang TM.** Intrasplenic transplantation of bioencapsulated mesenchymal stem cells improves the recovery rates of 90% partial hepatectomized rats. *Stem Cells Int* 2012; **2012**: 697094 [PMID: 23251190 DOI: 10.1155/2012/697094]
- 9 **Dahm F, Georgiev P, Clavien PA.** Small-for-size syndrome after partial liver transplantation: definition, mechanisms of disease and clinical implications. *Am J Transplant* 2005; **5**: 2605-2610 [PMID: 16212618 DOI: 10.1111/j.1600-6143.2005.01081.x]
- 10 **Pfaffl MW.** A new mathematical model for relative quantification in real-time RT-PCR. *Nucleic Acids Res* 2001; **29**: e45 [PMID: 11328886]
- 11 **Vandesompele J, De Preter K, Pattyn F, Poppe B, Van Roy N, De Paepe A, Speleman F.** Accurate normalization of real-time quantitative RT-PCR data by geometric averaging of multiple internal control genes. *Genome Biol* 2002; **3**: RESEARCH0034 [PMID: 12184808]
- 12 **Lambotte L, Saliez A, Triest S, Tagliaferri EM, Barker AP, Baranski AG.** Control of rate and extent of the proliferative response after partial hepatectomy. *Am J Physiol* 1997; **273**: G905-G912 [PMID: 9357834]
- 13 **Oswald J, Boxberger S, Jørgensen B, Feldmann S, Ehninger G, Bornhäuser M, Werner C.** Mesenchymal stem cells can be differentiated into endothelial cells in vitro. *Stem Cells* 2004; **22**: 377-384 [PMID: 15153614 DOI: 10.1634/stemcells.22-3-377]
- 14 **Chen MY, Lie PC, Li ZL, Wei X.** Endothelial differentiation of Wharton's jelly-derived mesenchymal stem cells in comparison with bone marrow-derived mesenchymal stem cells. *Exp Hematol* 2009; **37**: 629-640 [PMID: 19375653 DOI: 10.1016/j.exphem.2009.02.003]
- 15 **Arutyunyan I, Elchaninov A, Fatkhudinov T, Makarov A, Kananykhina E, Usman N, Bolshakova G, Glinkina V, Goldshtein**



- D, Sukhikh G. Elimination of allogeneic multipotent stromal cells by host macrophages in different models of regeneration. *Int J Clin Exp Pathol* 2015; **8**: 4469-4480 [PMID: 26191137]
- 16 **Lundup AV**, Onishchenko NA, Shagidulin M.Yu. Stem / progenitor cells of the liver and bone marrow as regulators of regenerative regeneration of damaged liver. Bulletin of transplantology and artificial organs. Russia. 2011: 100-107
- 17 **Onishchenko NA**, Lundup AV, Gazizov IM. Two-phase dynamics of the effect of mesenchymal multipotent stromal cells (MMSC) of the bone marrow on the liver in the modeling of fibrosing hepatitis. Bulletin of transplantology and artificial organs. Russia. 2011: 51-58
- 18 **Prockop DJ**. Concise review: two negative feedback loops place mesenchymal stem/stromal cells at the center of early regulators of inflammation. *Stem Cells* 2013; **31**: 2042-2046 [PMID: 23681848 DOI: 10.1002/stem.1400]
- 19 **Fatkhudinov TKh**, Bol'shakova GB, Goldshtein DV, Sukhikh GT. Mechanisms of therapeutic activity of multipotent cells in heart diseases. *Bull Exp Biol Med* 2014; **156**: 535-543 [PMID: 24771445 DOI: 10.1007/s10517-014-2392-5]

**P- Reviewer:** Clemens DLL, Chen YK **S- Editor:** Cui LJ  
**L- Editor:** A **E- Editor:** Li RF





Published by **Baishideng Publishing Group Inc**  
7901 Stoneridge Drive, Suite 501, Pleasanton, CA 94588, USA  
Telephone: +1-925-223-8242  
Fax: +1-925-223-8243  
E-mail: [bpgoffice@wjgnet.com](mailto:bpgoffice@wjgnet.com)  
Help Desk: <http://www.f6publishing.com/helpdesk>  
<http://www.wjgnet.com>

