

World Journal of *Gastroenterology*

World J Gastroenterol 2018 January 7; 24(1): 1-160





EDITORIAL

- 1 Estrogen, estrogen receptors, and hepatocellular carcinoma: Are we there yet?
Sukocheva OA

REVIEW

- 5 Relationship between intestinal microbiota and ulcerative colitis: Mechanisms and clinical application of probiotics and fecal microbiota transplantation
Shen ZH, Zhu CX, Quan YS, Yang ZY, Wu S, Luo WW, Tan B, Wang XY

MINIREVIEWS

- 15 Updated review on immune factors in pathogenesis of Crohn's disease
Li N, Shi RH

ORIGINAL ARTICLE

Basic Study

- 23 Construction of an oesophageal cancer-specific ceRNA network based on miRNA, lncRNA, and mRNA expression data
Xue WH, Fan ZR, Li LF, Lu JL, Ma BJ, Kan QC, Zhao J

- 35 Emodin and baicalein inhibit sodium taurocholate-induced vacuole formation in pancreatic acinar cells
Li J, Zhou R, Bie BB, Huang N, Guo Y, Chen HY, Shi MJ, Yang J, Zhang J, Li ZF

Case Control Study

- 46 Increased intestinal mucosal leptin levels in patients with diarrhea-predominant irritable bowel syndrome
Liu DR, Xu XJ, Yao SK

Retrospective Cohort Study

- 58 Correlation between smoking habit and surgical outcomes on viral-associated hepatocellular carcinomas
Kai K, Komukai S, Koga H, Yamaji K, Ide T, Kawaguchi A, Aishima S, Noshiro H

Retrospective Study

- 69 Safety and efficacy of metallic stent for unresectable distal malignant biliary obstruction in elderly patients
Sakai Y, Iwai T, Shimura K, Gon K, Koizumi K, Ijima M, Chiba K, Nakatani S, Sugiyama H, Tsuyuguchi T, Kamisawa T, Maetani I, Kida M
- 76 Short- and long-term outcomes following laparoscopic vs open surgery for pathological T4 colorectal cancer: 10 years of experience in a single center
Yang ZF, Wu DQ, Wang JJ, Lv ZJ, Li Y

- 87 Differential analysis of lymph node metastasis in histological mixed-type early gastric carcinoma in the mucosa and submucosa
Zhong Q, Sun Q, Xu GF, Fan XQ, Xu YY, Liu F, Song SY, Peng CY, Wang L

Observational Study

- 96 HLA-DQ: Celiac disease vs inflammatory bowel disease
Bosca-Watts MM, Minguez M, Planelles D, Navarro S, Rodriguez A, Santiago J, Tosca J, Mora F

- 104 Surgical specimen extraction *via* a prophylactic ileostomy procedure: A minimally invasive technique for laparoscopic rectal cancer surgery
Wang P, Liang JW, Zhou HT, Wang Z, Zhou ZX

Prospective Study

- 112 Characterization of biofilms in biliary stents and potential factors involved in occlusion
Vaishnavi C, Samanta J, Kochhar R

SYSTEMATIC REVIEWS

- 124 Systematic review of colorectal cancer screening guidelines for average-risk adults: Summarizing the current global recommendations
Bénard F, Barkun AN, Martel M, von Renteln D

META-ANALYSIS

- 139 Probiotic monotherapy and *Helicobacter pylori* eradication: A systematic review with pooled-data analysis
Losurdo G, Cubisino R, Barone M, Principi M, Leandro G, Ierardi E, Di Leo A

CASE REPORT

- 150 Long-term survival after gastrectomy and metastasectomy for gastric cancer with synchronous bone metastasis
Choi YJ, Kim DH, Han HS, Han JH, Son SM, Kim DS, Yun HY
- 157 Emergent single-balloon enteroscopy for overt bleeding of small intestinal vascular malformation
Chung CS, Chen KC, Chou YH, Chen KH

ABOUT COVER

Editorial board member of *World Journal of Gastroenterology*, Alexander Link, MD, PhD, Academic Research, Associate Professor, Department of Gastroenterology, Hepatology and Infectious Diseases, Otto-von-Guericke University Hospital Magdeburg, Magdeburg 39120, Germany

AIMS AND SCOPE

World Journal of Gastroenterology (*World J Gastroenterol*, *WJG*, print ISSN 1007-9327, online ISSN 2219-2840, DOI: 10.3748) is a peer-reviewed open access journal. *WJG* was established on October 1, 1995. It is published weekly on the 7th, 14th, 21st, and 28th each month. The *WJG* Editorial Board consists of 642 experts in gastroenterology and hepatology from 59 countries.

The primary task of *WJG* is to rapidly publish high-quality original articles, reviews, and commentaries in the fields of gastroenterology, hepatology, gastrointestinal endoscopy, gastrointestinal surgery, hepatobiliary surgery, gastrointestinal oncology, gastrointestinal radiation oncology, gastrointestinal imaging, gastrointestinal interventional therapy, gastrointestinal infectious diseases, gastrointestinal pharmacology, gastrointestinal pathophysiology, gastrointestinal pathology, evidence-based medicine in gastroenterology, pancreatology, gastrointestinal laboratory medicine, gastrointestinal molecular biology, gastrointestinal immunology, gastrointestinal microbiology, gastrointestinal genetics, gastrointestinal translational medicine, gastrointestinal diagnostics, and gastrointestinal therapeutics. *WJG* is dedicated to become an influential and prestigious journal in gastroenterology and hepatology, to promote the development of above disciplines, and to improve the diagnostic and therapeutic skill and expertise of clinicians.

INDEXING/ABSTRACTING

World Journal of Gastroenterology (*WJG*) is now indexed in Current Contents®/Clinical Medicine, Science Citation Index Expanded (also known as SciSearch®), Journal Citation Reports®, Index Medicus, MEDLINE, PubMed, PubMed Central and Directory of Open Access Journals. The 2017 edition of Journal Citation Reports® cites the 2016 impact factor for *WJG* as 3.365 (5-year impact factor: 3.176), ranking *WJG* as 29th among 79 journals in gastroenterology and hepatology (quartile in category Q2).

EDITORS FOR THIS ISSUE

Responsible Assistant Editor: Xiang Li
Responsible Electronic Editor: Yan Huang
Proofing Editor-in-Chief: Lian-Sheng Ma

Responsible Science Editor: Ze-Mao Gong
Proofing Editorial Office Director: Jin-Lei Wang

NAME OF JOURNAL
World Journal of Gastroenterology

ISSN
ISSN 1007-9327 (print)
ISSN 2219-2840 (online)

LAUNCH DATE
October 1, 1995

FREQUENCY
Weekly

EDITORS-IN-CHIEF
Damian Garcia-Olmo, MD, PhD, Doctor, Professor, Surgeon, Department of Surgery, Universidad Autonoma de Madrid; Department of General Surgery, Fundacion Jimenez Diaz University Hospital, Madrid 28040, Spain

Stephen C Strom, PhD, Professor, Department of Laboratory Medicine, Division of Pathology, Karolinska Institutet, Stockholm 141-86, Sweden

Andrzej S Tarnawski, MD, PhD, DSc (Med), Professor of Medicine, Chief Gastroenterology, VA Long Beach Health Care System, University of California, Irvine, CA, 5901 E. Seventh Str., Long Beach,

CA 90822, United States

EDITORIAL BOARD MEMBERS
All editorial board members resources online at <http://www.wjgnet.com/1007-9327/editorialboard.htm>

EDITORIAL OFFICE
Ze-Mao Gong, Director
World Journal of Gastroenterology
Baishideng Publishing Group Inc
7901 Stoneridge Drive, Suite 501,
Pleasanton, CA 94588, USA
Telephone: +1-925-2238242
Fax: +1-925-2238243
E-mail: editorialoffice@wjgnet.com
Help Desk: <http://www.f6publishing.com/helpdesk>
<http://www.wjgnet.com>

PUBLISHER
Baishideng Publishing Group Inc
7901 Stoneridge Drive, Suite 501,
Pleasanton, CA 94588, USA
Telephone: +1-925-2238242
Fax: +1-925-2238243
E-mail: bpgoffice@wjgnet.com
Help Desk: <http://www.f6publishing.com/helpdesk>
<http://www.wjgnet.com>

PUBLICATION DATE
January 7, 2018

COPYRIGHT
© 2018 Baishideng Publishing Group Inc. Articles published by this Open-Access journal are distributed under the terms of the Creative Commons Attribution Non-commercial License, which permits use, distribution, and reproduction in any medium, provided the original work is properly cited, the use is non commercial and is otherwise in compliance with the license.

SPECIAL STATEMENT
All articles published in journals owned by the Baishideng Publishing Group (BPG) represent the views and opinions of their authors, and not the views, opinions or policies of the BPG, except where otherwise explicitly indicated.

INSTRUCTIONS TO AUTHORS
Full instructions are available online at <http://www.wjgnet.com/bpg/gerinfo/204>

ONLINE SUBMISSION
<http://www.f6publishing.com>

Long-term survival after gastrectomy and metastasectomy for gastric cancer with synchronous bone metastasis

Young Jin Choi, Dae Hoon Kim, Hye Suk Han, Joung-Ho Han, Seung-Myoung Son, Dong Soo Kim, Hyo Yung Yun

Young Jin Choi, Dae Hoon Kim, Hyo Yung Yun, Department of Surgery, Chungbuk National University Hospital, Chungbuk National University College of Medicine, Cheongju 28644, South Korea

Hye Suk Han, Joung-Ho Han, Department of Internal Medicine, Chungbuk National University Hospital, Chungbuk National University College of Medicine, Cheongju 28644, South Korea

Seung-Myoung Son, Department of Pathology, Chungbuk National University Hospital, Chungbuk National University College of Medicine, Cheongju 28644, South Korea

Dong Soo Kim, Department of Orthopedics, Chungbuk National University Hospital, Chungbuk National University College of Medicine, Cheongju 28644, South Korea

ORCID number: Young Jin Choi (0000-0002-5519-7686); Dae Hoon Kim (0000-0001-9873-4907); Hye Suk Han (0000-0001-5020-8342); Joung-Ho Han (0000-0003-4469-9215); Seung-Myoung Son (0000-0002-1646-4649); Dong Soo Kim (0000-0001-9952-6034); Hyo Yung Yun (0000-0002-5592-1371).

Author contributions: Choi YJ and Kim DH wrote the manuscript; Kim DS and Yun HY designed and revised the manuscript; Han HS, Han JH and Son SM participated in collection of the medical data; Choi YJ, Kim DH and Yun HY are responsible for accuracy of the case; all authors read and approved the final manuscript.

Informed consent statement: Informed consent was obtained from the patient for this case report.

Conflict-of-interest statement: The authors declare that they have no competing interests.

Open-Access: This article is an open-access article which was selected by an in-house editor and fully peer-reviewed by external reviewers. It is distributed in accordance with the Creative Commons Attribution Non Commercial (CC BY-NC 4.0) license, which permits others to distribute, remix, adapt, build upon this work non-commercially, and license their derivative works on different terms, provided the original work is properly cited and the use is non-commercial. See: <http://creativecommons.org/licenses/by-nc/4.0/>

licenses/by-nc/4.0/

Manuscript source: Unsolicited manuscript

Correspondence to: Hyo Yung Yun, MD, PhD, Professor, Department of Surgery, Chungbuk National University Hospital, Chungbuk National University College of Medicine, 1 Chungdae-ro, Seowon-gu, Cheongju 28644, South Korea. yunhyo@chungbuk.ac.kr
Telephone: +82-43-2696032
Fax: +82-43-2666037

Received: October 30, 2017

Peer-review started: October 31, 2017

First decision: November 8, 2017

Revised: November 18, 2017

Accepted: November 27, 2017

Article in press: November 27, 2017

Published online: January 7, 2018

Abstract

Bone metastasis is a rare event in patients with gastric cancer, but pathologic fracture, paralysis, pain and hematological disorders associated with the bone metastasis may influence the quality of life. We report herein the case of a 53-year-old man who presented with primary remnant gastric cancer with bone metastasis. The patient requested further investigations after detection of a metastatic lesion in the 2nd lumbar vertebra during evaluation for back pain that had persisted for 3 mo. No other metastatic lesions were detected. He underwent total gastrectomy and palliative metastasectomy to aid in reduction of symptoms, and he received combination chemotherapy with tegafur (S-1) and cisplatin. The patient survived for about 60 mo after surgery. Currently, there is no treatment guideline for gastric cancer with bone metastasis, and we believe that gastrectomy plus metastasectomy may be an effective therapeutic option for improving quality

of life and survival in patients with resectable primary gastric cancer and bone metastasis.

Key words: Stomach neoplasms; Gastrectomy; Bone neoplasms; Neoplasm metastasis; Metastasectomy

© **The Author(s) 2018.** Published by Baishideng Publishing Group Inc. All rights reserved.

Core tip: Gastrectomy and metastasectomy may be an effective therapeutic option for improving quality of life and survival in selected gastric cancer patients with bone metastasis. Favorable factors, such as resectable solitary bone lesions, good performance status and normal serum carcinoembryonic antigen levels, should be utilized to stratify and select patients who will be good candidates for surgery.

Choi YJ, Kim DH, Han HS, Han JH, Son SM, Kim DS, Yun HY. Long-term survival after gastrectomy and metastasectomy for gastric cancer with synchronous bone metastasis. *World J Gastroenterol* 2018; 24(1): 150-156 Available from: URL: <http://www.wjgnet.com/1007-9327/full/v24/i1/150.htm> DOI: <http://dx.doi.org/10.3748/wjg.v24.i1.150>

INTRODUCTION

The survival rate associated with gastric cancers has improved due to improvements in diagnostic technology, surgery, adjuvant therapy and increased detection at early stages. Although the incidence of gastric cancer has gradually declined, it remains the second most common cancer in South Korea, after thyroid cancer, according to the Korea Cancer Registry statistics for the year 2010. It is also the third leading cause of cancer-related death^[1].

A substantial proportion of patients are diagnosed at an advanced stage with synchronous distant metastases. Treating such patients is a therapeutic challenge for physicians, since it is generally accepted that such patients have incurable disease and that treatment is administered with a noncurative intent. Distant metastasis in gastric cancer patients is known to be one of the most important prognostic risk factors, with associated parameters like depth of invasion and lymph node metastasis^[2]. Bone metastasis is more commonly observed in other cancer types, like cancers of the breast, lung and prostate, but is rather rare in gastric cancer^[3].

Gastric cancer with bone metastasis is associated with poor prognosis^[4,5]. Moreover, it is related to pathologic fracture, paralysis, pain and hematological disorders, which may influence quality of life and need for further treatment. Disease management in such cases is a challenge for physicians, since no guidelines exist for treatment of patients with gastric cancer and associated bone metastasis. We present here a

case of long-term survival after completion of total gastrectomy and metastasectomy for primary remnant gastric cancer (RGC) with bone metastasis. We also include a review of the relevant literature.

CASE REPORT

A 53-year-old male patient, who had complained of back pain, was found to have a mass in the 2nd lumbar vertebra by magnetic resonance imaging (MRI), and was transferred to our institution for further evaluation. He had no significant medical history, except for having undergone gastrectomy due to a gastric ulcer 15 years prior. At the onset, blood biochemical parameters were within normal range (alkaline phosphatase: 141 IU/L, normal range: 40-145 IU/L; calcium: 9.5 mg/dL, normal range: 8.2-10.8 mg/dL), as were the levels of carcinoembryonic antigen (CEA; 2.26 ng/mL, normal range: < 5.0 ng/mL), cancer antigen (CA) 19-9 (12.25 U/mL, normal range: < 37 U/mL) and lactate dehydrogenase (LDH; 152 IU/L, normal range: 70-178 IU/L). The MRI showed a suspicious metastatic lesion in the 2nd lumbar vertebra with enhancing signal intensity on a T2-weighted image, and bone scans showed a focal hot uptake at the 2nd lumbar vertebra (Figure 1A-C). A bone biopsy taken at the 2nd lumbar vertebra was diagnosed as metastatic adenocarcinoma. Gastroduodenoscopic findings showed a Borrmann type III lesion at the remnant stomach lesser curvature (Figure 1D), which was diagnosed as poorly differentiated adenocarcinoma by biopsy. Serum fasting gastrin level was within normal range, and Giemsa staining did not demonstrate *Helicobacter pylori* (*H. pylori*) infection in the gastric biopsy specimen. No other metastatic lesions were detected on chest computed tomography (CT) and abdominal pelvic CT scans.

The patient underwent total gastrectomy with Roux-en-Y esophagojejunostomy and lumbar vertebrae metastasectomy (Figure 2A and B). Pathologic findings after the surgery described poorly differentiated adenocarcinoma, with invasion of serosa and massive lymphovascular invasion. Five metastatic lymph nodes were observed among the nine regional lymph nodes examined. Microscopically, the tumor consisted of solid nests of poorly differentiated tumor cells having ovoid nuclei and indistinct cytoplasm. Immunohistochemistry showed that the tumor cells exhibited diffuse immunoreactivity for cytokeratin AE1/AE3, but were negative for synaptophysin and vimentin, a test for neurofilament immunoreactivity that has been identified in most neuroendocrine tumors. These findings support the diagnosis of poorly differentiated adenocarcinoma (Figure 3A-D).

Microscopically, the tumors of lumbar vertebrae were identified as poorly differentiated, with histologic and immunohistochemical features identical to those of the carcinoma of the stomach (Figure 3E-H). Bone marrow was also obtained from the patient's lumbar spine during surgery, and no cancer cells were

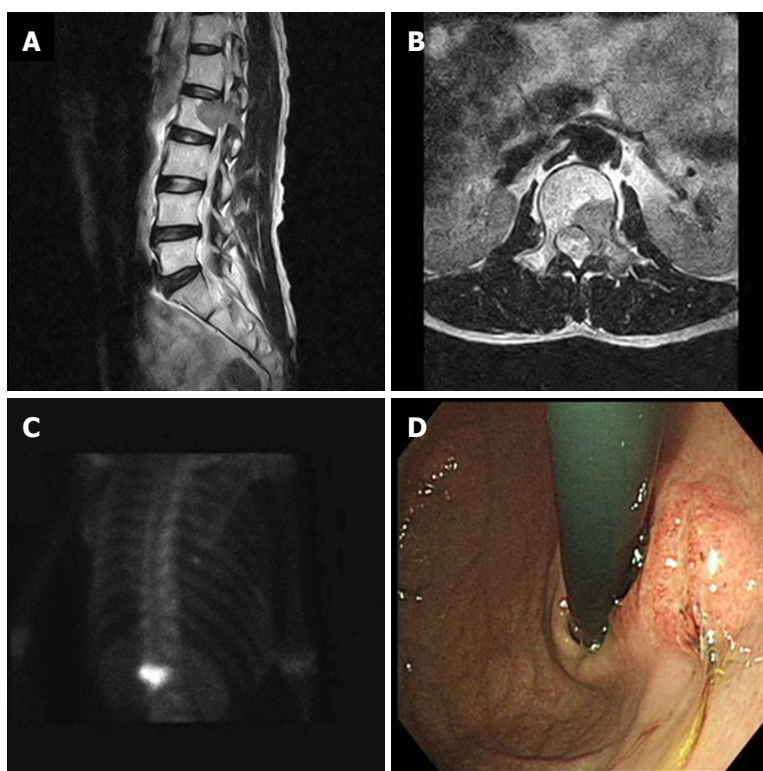


Figure 1 Radiologic findings of the 2nd lumbar vertebra and the endoscopic finding of gastric cancer. A and B: Bone magnetic resonance imaging showing bone marrow signal change and soft tissue formation at the 2nd lumbar vertebra that extended to the transverse process and the back muscle; C: Bone scan demonstrating 99m Tc-HDP 25mCi uptake in the 2nd lumbar vertebra; D: Endoscopy revealing a 3-cm ulceroinfiltrative mass on the lesser curvature of the high body of the remnant stomach.

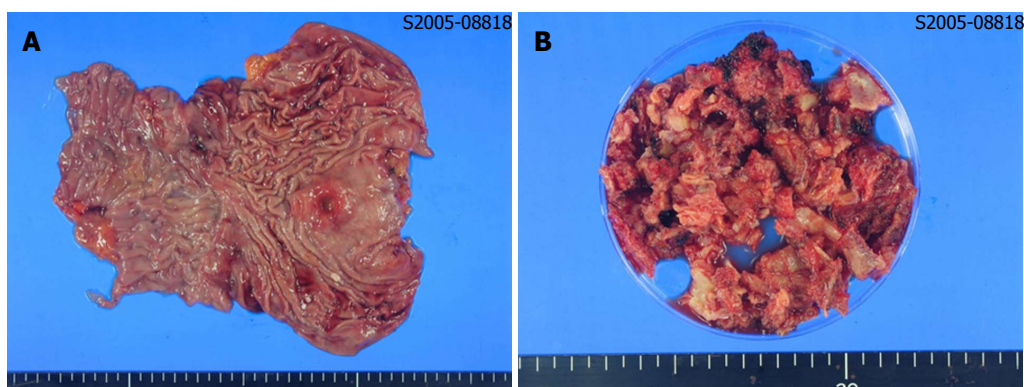


Figure 2 Macroscopic findings of resected stomach and metastatic tumor of bone. A: A 3-cm ulceroinfiltrating mass was found on the lesser curvature side of stomach. It was 4 cm distant from the proximal resection margin, and 11 cm distant from the distal resection margin; B: About 100 cc of bone and soft tissues were resected from the lumbar spine.

detected in the bone marrow aspirate. The results of postoperative pathologic findings led to a tumor-node-metastasis classification of T4aN2M1, according to the American Joint Committee on Cancer 7th edition staging manual.

The patient received palliative first-line combination chemotherapy with tegafur (S-1) and cisplatin for a year. Duration of relapse-free survival was 25 mo, when multiple metastases were found in follow-up to have developed on the right ileum and liver (Figure 4). Right ileum radiotherapy and second-line palliative

combination of folinic acid, fluorouracil and oxaliplatin (known as FOLFOX chemotherapy) was administered. Third-line combination chemotherapy of folinic acid, fluorouracil and irinotecan (known as FOLFIRI) and fourth-line docetaxel chemotherapy proceeded, and the patient died 60 mo after surgery.

DISCUSSION

In this study, we report a case of RGC with synchronous isolated bone metastasis. The average interval

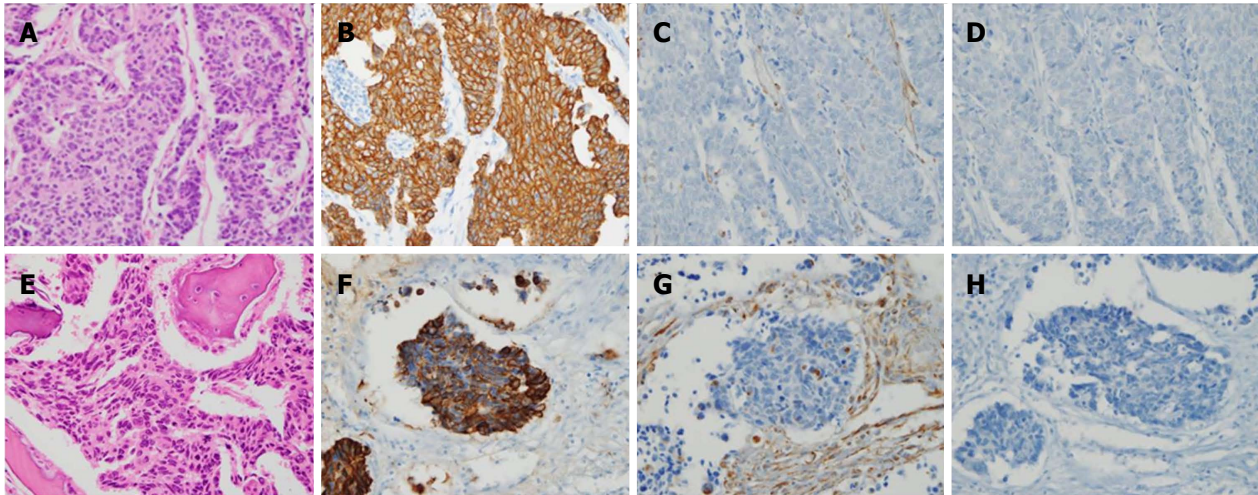


Figure 3 Histopathological and immunohistochemical findings of stomach cancer (A-D) and metastatic bone lesion (E and F). A: The stomach tumor consisted of solid nests of poorly differentiated tumor cells, with ovoid nuclei and indistinct cytoplasm (hematoxylin-eosin, $\times 400$); B-D: Immunohistochemistry showed that the tumor cells exhibited diffuse immunoreactivity for cytokeratin AE1/AE3 (B: $\times 400$), but were negative for vimentin (C: $\times 400$) and synaptophysin (D: $\times 400$), which supported the diagnosis of poorly differentiated adenocarcinoma; E: The bone tumors were identified as poorly differentiated tumors (hematoxylin-eosin, $\times 400$), with histologic and immunohistochemical features identical to those of the carcinoma of the stomach that were positive for cytokeratin AE1/AE3 (F: $\times 400$) and negative for vimentin (G: $\times 400$) and synaptophysin (H: $\times 400$).

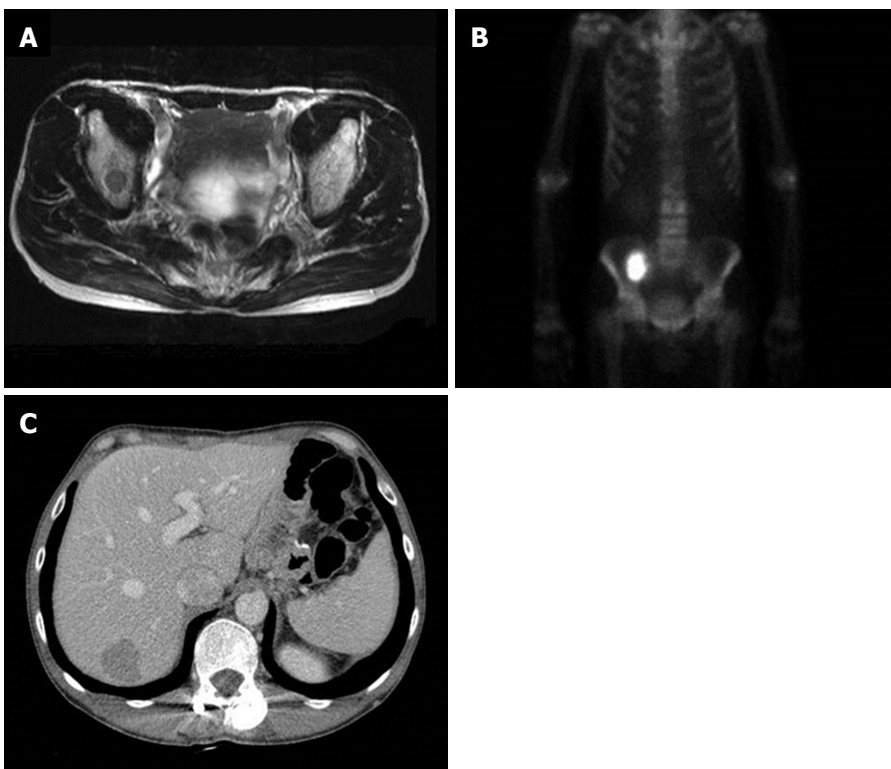


Figure 4 Findings of bone magnetic resonance imaging, bone scan and abdomen computed tomography after 25-mo of follow-up. A and B: Right ilium bone metastasis; C: Liver metastasis.

between initial distal gastrectomy and the second surgery for RGC is reported to be 22.0-34.6 years for benign disease and 6.8-18.8 years for gastric cancer^[6]. As possible important factors for the pathogenesis for RGC, *H. pylori* infection, duodenogastric reflux and denervation of gastric mucosa have been considered. Also, Billroth-II (B-II) reconstruction is known to be

more prevalent in developing RGC than Billroth-I (B-I) reconstruction; the possible reason is continuous bathing by duodenogastric reflux, as well as mucosal inflammation and regeneration^[6,7]. In the case described herein, *H. pylori* infection was not identified. But, the previous B-II reconstruction and persistent duodenogastric reflux could have been the possible cause of

RGC in this patient.

While the number of patients diagnosed with gastric cancer has increased with the development of endoscopy and mass screening tests, the survival rate of gastric cancer patients has also improved due to the advancement of diagnostic technology for early detection, surgery and postoperative adjuvant therapy. However, there is a substantial portion of the patient population with unresectable gastric cancer due to synchronous distant metastasis. It is now accepted that the presence of bone metastasis is an independent prognostic risk factor for advanced gastric cancer^[8].

Gastric cancer with synchronous bone metastasis occurs rarely. Park *et al.*^[4] reported that synchronous bone metastases developed in about 0.9% of the total gastric cancer cases in their series. Evidence in the literature suggests that gastric cancer with synchronous bone metastasis is associated with a poor prognosis, the median survival time of which is 97 d^[4]. In the majority of cases of gastric cancer with synchronous bone metastasis, the tumor is unresectable and the prognosis is very poor. There is also no established treatment guideline for these patients.

Physicians are often placed in challenging situations to manage the disease, since the difficulty is compounded by the presence of associated pathologic fractures, pain and hematologic disorders. Some studies have reported survival gain in gastric cancer patients with synchronous distant metastasis who underwent resectable gastric surgery, with or without metastasectomy^[9-11]. Meta-analysis revealed that palliative gastrectomy is associated with a significant improvement in overall survival (HR = 0.62), as compared to that of patients without palliative gastrectomy^[9]. Kim *et al.*^[11] studied the effect of gastrectomy and metastasectomy in patients with gastric cancer with distant metastases, who had previously received chemotherapy. They reported that the survival rate of patients who underwent gastrectomy plus metastasectomy was higher than that of patients who underwent debulking gastrectomy only, as well as that of patients who were administered chemotherapy only (median overall survival and 3-year survival rates reported as 28.0 mo, 15.5 mo and 9.0 mo and 42.8%, 8.1% and 3.5%, respectively). Meta-analysis also showed the survival improvement in metastatic gastric cancer patients who underwent visceral metastasectomy including liver, peritoneum and distant node. The mean increased difference in survival conferred by metastasectomy averaged between 9.3 mo and 15.7 mo^[12].

However, the above studies were retrospective and selection bias cannot be ruled out. Evidence to support surgical intervention in these patients is not conclusive. There is a need for prospective randomized controlled studies to evaluate the value of resectable surgery on patients with gastric cancer with distant metastasis. Furthermore, in these studies, there was no case of metastasectomy in patients with synchronous bone

metastasis. In addition, in the study conducted by Park *et al.*^[4] there was no evidence for curative resection of synchronous bone metastasis.

We think that for most patients with gastric cancer with synchronous bone metastases, curative resection is not an option, because the majority of bone metastases present as multiple lesions^[4,13,14] and are located at unresectable anatomic locations. The most common location of bone metastasis in patients with stomach cancer is the spine, followed by the pelvis and the ribs. Hence, most patients with gastric cancer who develop bone metastases complain of back pain^[15]. While there is no established treatment regimen for bone metastasis, radiation therapy is known to be effective^[16,17]. In the present case, bone metastasectomy was conducted as a palliative therapy to alleviate back pain, because the solitary bone metastasis in the spine was resectable.

Clinicopathologic features associated with bone metastasis have not been fully established in the literature thus far. Sudo *et al.*^[18] reported that bone metastasis after surgery is observed mainly in cases of cancers involving the upper third or middle third of the stomach, which are associated with massive lymphatic invasion and poorly differentiated adenocarcinoma. In the present case, gastric cancer occurred in the remnant stomach of a patient who had undergone gastric ulcer surgery. Pathologic findings showed poorly differentiated adenocarcinoma with massive lymphovascular invasion. The mechanism by which bone metastasis develops in patients with gastric cancer is not known exactly, but York *et al.*^[19] observed that bone metastasis is most frequently seen in the vertebral body. Based on the location, they suggested the possibility of hematogenous spread through Batson's vertebral plexus, bypassing portal circulation.

Known factors associated with longer median survival times for the patients with bone metastasis include isolated bone metastasis, well differentiated tumors, palliative chemotherapy and zoledronic acid treatment^[20]. On the other hand, high-level LDH, CEA or CA19-9, serum hypercalcemia, poor performance status, and involvement of multiple bones are associated with shorter survival times^[4,5,20]. Usually, an increase of serum alkaline phosphatase levels is observed in 45.3%-66.0% of patients with bone metastasis^[14,15]. In the present case, CEA, serum alkaline phosphatase and serum calcium levels were within normal range.

In the majority of cases, gastric cancer with synchronous bone metastasis is unresectable, and prognosis is usually very poor. In the present case, however, performance status was good, and the metastasis was a solitary, resectable bone lesion. These factors and aggressive palliative chemotherapy probably supported long-term survival of the patient after surgery. Therefore, we hypothesize that gastrectomy plus metastasectomy may be an effective therapeutic option for improving quality of life and survival in selected patients with bone metastasis. Favorable factors,

such as resectable solitary bone lesions, good performance status and normal serum CEA levels, should be utilized to stratify and select patients who will be good candidates for surgery.

In conclusion, aggressive local therapy, including gastrectomy with metastasectomy and palliative chemotherapy, may be an effective therapeutic option for improving survival in patients with resectable primary gastric cancer and bone metastasis.

ARTICLE HIGHLIGHTS

Case characteristics

A 53-year-old man, referred after detection of a tumorous bony lesion in the 2nd lumbar vertebra during evaluation for back pain.

Clinical diagnosis

The patient had no significant medical history, except for having undergone gastrectomy due to gastric ulcer 15 years prior.

Differential diagnosis

Primary bone neoplasm, metastatic bone tumor.

Laboratory diagnosis

Serum alkaline phosphatase, calcium, carcinoembryonic antigen (CEA), cancer antigen (CA) 19-9 and lactate dehydrogenase (LDH) levels were within normal range.

Imaging diagnosis

Magnetic resonance imaging of the spine showed a suspicious metastatic lesion in the 2nd lumbar vertebra, with enhancing signal intensity on a T2-weighted image. Gastroduodenoscopy showed a Borrmann type III lesion at the remnant stomach lesser curvature.

Pathological diagnosis

A bone biopsy taken at the 2nd lumbar vertebra led to diagnosis of metastatic adenocarcinoma. Gastric lesion was diagnosed as poorly differentiated adenocarcinoma by biopsy.

Treatment

The patient underwent total gastrectomy and lumbar vertebrae metastasectomy, followed by aggressive palliative chemotherapy.

Related reports

Gastric cancer with bone metastasis is relatively rare and associated with poor prognosis. Known factors associated with longer median survival times for patients with bone metastasis include isolated bone metastasis, well differentiated tumors, palliative chemotherapy and zoledronic acid treatment. On the other hand, high-level LDH, CEA and CA19-9, serum hypercalcemia, poor performance status, and involvement of multiple bones are associated with shorter survival times. Small studies have reported survival gain in gastric cancer patients with synchronous distant metastasis who underwent resectable gastric surgery plus metastasectomy.

Term explanation

Gastrectomy is a partial or total surgical removal of the stomach. Metastasectomy is the surgical removal of metastases, which are secondary cancerous growths that have spread from cancer originating in another organ in the body.

Experiences and lessons

Aggressive local therapy, including gastrectomy with metastasectomy and

palliative chemotherapy, may be an effective therapeutic option for improving survival in patients with resectable primary gastric cancer and bone metastasis.

REFERENCES

- 1 **Jung KW**, Won YJ, Kong HJ, Oh CM, Seo HG, Lee JS. Cancer statistics in Korea: incidence, mortality, survival and prevalence in 2010. *Cancer Res Treat* 2013; **45**: 1-14 [PMID: 23613665 DOI: 10.4143/crt.2013.45.1.1]
- 2 **Siewert JR**, Böttcher K, Stein HJ, Roder JD. Relevant prognostic factors in gastric cancer: ten-year results of the German Gastric Cancer Study. *Ann Surg* 1998; **228**: 449-461 [PMID: 9790335 DOI: 10.1097/0000658-199810000-00002]
- 3 **Nishidoi H**, Koga S. [Clinicopathological study of gastric cancer with bone metastasis]. *Gan To Kagaku Ryoho* 1987; **14**: 1717-1722 [PMID: 3592711]
- 4 **Park HS**, Rha SY, Kim HS, Hyung WJ, Park JS, Chung HC, Noh SH, Jeung HC. A prognostic model to predict clinical outcome in gastric cancer patients with bone metastasis. *Oncology* 2011; **80**: 142-150 [PMID: 21677462 DOI: 10.1159/000328507]
- 5 **Kim YJ**, Kim SH, Kim JW, Lee JO, Kim JH, Bang SM, Lee JS, Lee KW. Gastric cancer with initial bone metastasis: a distinct group of diseases with poor prognosis. *Eur J Cancer* 2014; **50**: 2810-2821 [PMID: 25201165 DOI: 10.1016/j.ejca.2014.08.003]
- 6 **Ohira M**, Toyokawa T, Sakurai K, Kubo N, Tanaka H, Muguruma K, Yashiro M, Onoda N, Hirakawa K. Current status in remnant gastric cancer after distal gastrectomy. *World J Gastroenterol* 2016; **22**: 2424-2433 [PMID: 26937131 DOI: 10.3748/wjg.v22.i8.2424]
- 7 **Takeno S**, Hashimoto T, Maki K, Shibata R, Shiwa H, Yamana I, Yamashita R, Yamashita Y. Gastric cancer arising from the remnant stomach after distal gastrectomy: a review. *World J Gastroenterol* 2014; **20**: 13734-13740 [PMID: 25320511 DOI: 10.3748/wjg.v20.i38.13734]
- 8 **Lee J**, Lim T, Uhm JE, Park KW, Park SH, Lee SC, Park JO, Park YS, Lim HY, Sohn TS, Noh JH, Heo JS, Park CK, Kim S, Kang WK. Prognostic model to predict survival following first-line chemotherapy in patients with metastatic gastric adenocarcinoma. *Ann Oncol* 2007; **18**: 886-891 [PMID: 17298958 DOI: 10.1093/annonc/mdl501]
- 9 **Sun J**, Song Y, Wang Z, Chen X, Gao P, Xu Y, Zhou B, Xu H. Clinical significance of palliative gastrectomy on the survival of patients with incurable advanced gastric cancer: a systematic review and meta-analysis. *BMC Cancer* 2013; **13**: 577 [PMID: 24304886 DOI: 10.1186/1471-2407-13-577]
- 10 **Hartgrink HH**, Putter H, Klein Kranenbarg E, Bonenkamp JJ, van de Velde CJ, Dutch Gastric Cancer Group. Value of palliative resection in gastric cancer. *Br J Surg* 2002; **89**: 1438-1443 [PMID: 12390389 DOI: 10.1046/j.1365-2168.2002.02220.x]
- 11 **Kim KH**, Lee KW, Baek SK, Chang HJ, Kim YJ, Park DJ, Kim JH, Kim HH, Lee JS. Survival benefit of gastrectomy ± metastasectomy in patients with metastatic gastric cancer receiving chemotherapy. *Gastric Cancer* 2011; **14**: 130-138 [PMID: 21373855 DOI: 10.1007/s10120-011-0015-7]
- 12 **Gadde R**, Tamariz L, Hanna M, Avisar E, Livingstone A, Franceschi D, Yakoub D. Metastatic gastric cancer (MGC) patients: Can we improve survival by metastasectomy? A systematic review and meta-analysis. *J Surg Oncol* 2015; **112**: 38-45 [PMID: 26074130 DOI: 10.1002/jso.23945]
- 13 **Nakanishi H**, Araki N, Kuratsu S, Narahara H, Ishikawa O, Yoshikawa H. Skeletal metastasis in patients with gastric cancer. *Clin Orthop Relat Res* 2004; **(423)**: 208-212 [PMID: 15232450 DOI: 10.1097/01.blo.0000129159.65684.b3]
- 14 **Choi CW**, Lee DS, Chung JK, Lee MC, Kim NK, Choi KW, Koh CS. Evaluation of bone metastases by Tc-99m MDP imaging in patients with stomach cancer. *Clin Nucl Med* 1995; **20**: 310-314 [PMID: 7788986 DOI: 10.1097/00003072-199504000-00005]
- 15 **Ahn JB**, Ha TK, Kwon SJ. Bone metastasis in gastric cancer patients. *J Gastric Cancer* 2011; **11**: 38-45 [PMID: 22076200 DOI: 10.4143/jgc.2011.11.38-45]

- 10.5230/jgc.2011.11.1.38]
- 16 **Murai N**, Koga K, Nagamachi S, Nishikawa K, Matsuki K, Kusumoto S, Watanabe K. [Radiotherapy in bone metastases--with special reference to its effect on relieving pain]. *Gan No Rinsho* 1989; **35**: 1149-1152 [PMID: 2550686]
- 17 **McQuay HJ**, Collins SL, Carroll D, Moore RA. Radiotherapy for the palliation of painful bone metastases. *Cochrane Database Syst Rev* 2000; **(2)**: CD001793 [PMID: 10796822 DOI: 10.1002/14651858.CD001793]
- 18 **Sudo H**, Takagi Y, Katayanagi S, Hoshino S, Suda T, Hibi Y, Ito K, Tsutida A, Aoki T. [Bone metastasis of gastric cancer]. *Gan To Kagaku Ryoho* 2006; **33**: 1058-1060 [PMID: 16912521]
- 19 **York JE**, Stringer J, Ajani JA, Wildrick DM, Gokaslan ZL. Gastric cancer and metastasis to the brain. *Ann Surg Oncol* 1999; **6**: 771-776 [PMID: 10622506 DOI: 10.1007/s10434-999-0771-3]
- 20 **Turkoz FP**, Solak M, Kilickap S, Ulas A, Esbah O, Oksuzoglu B, Yalcin S. Bone metastasis from gastric cancer: the incidence, clinicopathological features, and influence on survival. *J Gastric Cancer* 2014; **14**: 164-172 [PMID: 25328761 DOI: 10.5230/jgc.2014.14.3.164]

P- Reviewer: Aoyagi K, Guner A, Koch TR **S- Editor:** Gong ZM
L- Editor: A **E- Editor:** Huang Y





Published by **Baishideng Publishing Group Inc**
7901 Stoneridge Drive, Suite 501, Pleasanton, CA 94588, USA
Telephone: +1-925-223-8242
Fax: +1-925-223-8243
E-mail: bpgooffice@wjgnet.com
Help Desk: <http://www.f6publishing.com/helpdesk>
<http://www.wjgnet.com>



ISSN 1007-9327

