

World Journal of *Gastroenterology*

World J Gastroenterol 2018 January 21; 24(3): 315-444



**MINIREVIEWS**

- 315 Use of direct-acting antiviral agents in hepatitis C virus-infected liver transplant candidates
Gadiparthi C, Cholankeril G, Perumpail BJ, Yoo ER, Satapathy SK, Nair S, Ahmed A

ORIGINAL ARTICLE**Basic Study**

- 323 circRNA_0046366 inhibits hepatocellular steatosis by normalization of PPAR signaling
Guo XY, Sun F, Chen JN, Wang YQ, Pan Q, Fan JG
- 338 Effect of *Lactobacillus rhamnosus* GG supernatant on serotonin transporter expression in rats with post-infectious irritable bowel syndrome
Cao YN, Feng LJ, Liu YY, Jiang K, Zhang MJ, Gu YX, Wang BM, Gao J, Wang ZL, Wang YM
- 351 Epidermal growth factor receptor-targeted immune magnetic liposomes capture circulating colorectal tumor cells efficiently
Kuai JH, Wang Q, Zhang AJ, Zhang JY, Chen ZF, Wu KK, Hu XZ
- 360 Hypoxia preconditioning protects Ca²⁺-ATPase activation of intestinal mucosal cells against R/I injury in a rat liver transplantation model
Ji ZP, Li YX, Shi BX, Zhuang ZN, Yang JY, Guo S, Xu XZ, Xu KS, Li HL

Case Control Study

- 371 Multi-parameter gene expression profiling of peripheral blood for early detection of hepatocellular carcinoma
Xie H, Xue YQ, Liu P, Zhang PJ, Tian ST, Yang Z, Guo Z, Wang HM

Retrospective Study

- 379 Clinical advantages of single port laparoscopic hepatectomy
Han JH, You YK, Choi HJ, Hong TH, Kim DG
- 387 Autoimmune liver disease-related autoantibodies in patients with biliary atresia
Pang SY, Dai YM, Zhang RZ, Chen YH, Peng XF, Fu J, Chen ZR, Liu YF, Yang LY, Wen Z, Yu JK, Liu HY

Observational Study

- 397 *Helicobacter pylori* and corpus gastric pathology are associated with lower serum ghrelin
Mantero P, Matus GS, Corti RE, Cabanne AM, Zerbetto de Palma GG, Marchesi Olid L, Piskorz MM, Zubillaga MB, Janjetic MA, Goldman CG

- 408** Metal stents placement for refractory pancreatic duct stricture in children

Jeong IS, Lee SH, Oh SH, Park DH, Kim KM

Prospective Study

- 415** Optimization of hepatobiliary phase delay time of Gd-EOB-DTPA-enhanced magnetic resonance imaging for identification of hepatocellular carcinoma in patients with cirrhosis of different degrees of severity

Wu JW, Yu YC, Qu XL, Zhang Y, Gao H

SYSTEMATIC REVIEWS

- 424** Epidemiology of inflammatory bowel disease in racial and ethnic migrant groups

Misra R, Faiz O, Munkholm P, Burisch J, Arebi N

CASE REPORT

- 438** Beneficial long term effect of a phosphodiesterase-5-inhibitor in cirrhotic portal hypertension: A case report with 8 years follow-up

Deibert P, Lazaro A, Stankovic Z, Schaffner D, Rössle M, Kreisel W

ABOUT COVER

Editorial board member of *World Journal of Gastroenterology*, Giuseppe Verlato, MD, PhD, Associate Professor, Department of Public Health and Community Medicine, Unit of Epidemiology and Medical Statistics, University of Verona, Verona 37134, Italy

AIMS AND SCOPE

World Journal of Gastroenterology (*World J Gastroenterol*, *WJG*, print ISSN 1007-9327, online ISSN 2219-2840, DOI: 10.3748) is a peer-reviewed open access journal. *WJG* was established on October 1, 1995. It is published weekly on the 7th, 14th, 21st, and 28th each month. The *WJG* Editorial Board consists of 642 experts in gastroenterology and hepatology from 59 countries.

The primary task of *WJG* is to rapidly publish high-quality original articles, reviews, and commentaries in the fields of gastroenterology, hepatology, gastrointestinal endoscopy, gastrointestinal surgery, hepatobiliary surgery, gastrointestinal oncology, gastrointestinal radiation oncology, gastrointestinal imaging, gastrointestinal interventional therapy, gastrointestinal infectious diseases, gastrointestinal pharmacology, gastrointestinal pathophysiology, gastrointestinal pathology, evidence-based medicine in gastroenterology, pancreatology, gastrointestinal laboratory medicine, gastrointestinal molecular biology, gastrointestinal immunology, gastrointestinal microbiology, gastrointestinal genetics, gastrointestinal translational medicine, gastrointestinal diagnostics, and gastrointestinal therapeutics. *WJG* is dedicated to become an influential and prestigious journal in gastroenterology and hepatology, to promote the development of above disciplines, and to improve the diagnostic and therapeutic skill and expertise of clinicians.

INDEXING/ABSTRACTING

World Journal of Gastroenterology (*WJG*) is now indexed in Current Contents[®]/Clinical Medicine, Science Citation Index Expanded (also known as SciSearch[®]), Journal Citation Reports[®], Index Medicus, MEDLINE, PubMed, PubMed Central and Directory of Open Access Journals. The 2017 edition of Journal Citation Reports[®] cites the 2016 impact factor for *WJG* as 3.365 (5-year impact factor: 3.176), ranking *WJG* as 29th among 79 journals in gastroenterology and hepatology (quartile in category Q2).

EDITORS FOR THIS ISSUE

Responsible Assistant Editor: Xiang Li
Responsible Electronic Editor: Yan Huang
Proofing Editor-in-Chief: Lian-Sheng Ma

Responsible Science Editor: Ze-Mao Gong
Proofing Editorial Office Director: Jin-Lei Wang

NAME OF JOURNAL
World Journal of Gastroenterology

ISSN
ISSN 1007-9327 (print)
ISSN 2219-2840 (online)

LAUNCH DATE
October 1, 1995

FREQUENCY
Weekly

EDITORS-IN-CHIEF
Damian Garcia-Olmo, MD, PhD, Doctor, Professor, Surgeon, Department of Surgery, Universidad Autonoma de Madrid; Department of General Surgery, Fundacion Jimenez Diaz University Hospital, Madrid 28040, Spain

Stephen C Strom, PhD, Professor, Department of Laboratory Medicine, Division of Pathology, Karolinska Institutet, Stockholm 141-86, Sweden

Andrzej S Tarnawski, MD, PhD, DSc (Med), Professor of Medicine, Chief Gastroenterology, VA Long Beach Health Care System, University of California, Irvine, CA, 5901 E. Seventh Str., Long Beach,

CA 90822, United States

EDITORIAL BOARD MEMBERS
All editorial board members resources online at <http://www.wjgnet.com/1007-9327/editorialboard.htm>

EDITORIAL OFFICE
Ze-Mao Gong, Director
World Journal of Gastroenterology
Baishideng Publishing Group Inc
7901 Stoneridge Drive, Suite 501,
Pleasanton, CA 94588, USA
Telephone: +1-925-2238242
Fax: +1-925-2238243
E-mail: editorialoffice@wjgnet.com
Help Desk: <http://www.f6publishing.com/helpdesk>
<http://www.wjgnet.com>

PUBLISHER
Baishideng Publishing Group Inc
7901 Stoneridge Drive, Suite 501,
Pleasanton, CA 94588, USA
Telephone: +1-925-2238242
Fax: +1-925-2238243
E-mail: bpgoffice@wjgnet.com
Help Desk: <http://www.f6publishing.com/helpdesk>
<http://www.wjgnet.com>

PUBLICATION DATE
January 21, 2018

COPYRIGHT
© 2018 Baishideng Publishing Group Inc. Articles published by this Open-Access journal are distributed under the terms of the Creative Commons Attribution Non-commercial License, which permits use, distribution, and reproduction in any medium, provided the original work is properly cited, the use is non commercial and is otherwise in compliance with the license.

SPECIAL STATEMENT
All articles published in journals owned by the Baishideng Publishing Group (BPG) represent the views and opinions of their authors, and not the views, opinions or policies of the BPG, except where otherwise explicitly indicated.

INSTRUCTIONS TO AUTHORS
Full instructions are available online at <http://www.wjgnet.com/bpg/gerinfo/204>

ONLINE SUBMISSION
<http://www.f6publishing.com>

Observational Study

Metal stents placement for refractory pancreatic duct stricture in children

In Sook Jeong, Sung Hee Lee, Seak Hee Oh, Do Hyun Park, Kyung Mo Kim

In Sook Jeong, Sung Hee Lee, Seak Hee Oh, Kyung Mo Kim, Department of Pediatrics, University of Ulsan College of Medicine, Asan Medical Center Children's Hospital, Seoul 05505, South Korea

Do Hyun Park, Department of Internal Medicine, University of Ulsan College of Medicine, Asan Medical Center, Seoul 05505, South Korea

ORCID number: In Sook Jeong (0000-0002-3094-3603); Sung Hee Lee (0000-0003-3262-9658); Seak Hee Oh (0000-0002-9672-8877); Do Hyun Park (0000-0002-0270-6969); Kyung Mo Kim (0000-0001-7896-6751).

Author contributions: Jeong IS, Lee SH, Oh SH and Kim KM contributed to the conception and design of the study; all authors contributed to the study implementation, data acquisition, and data analysis; Jeong IS wrote the manuscript; and all authors contributed to the editing, reviewing, and final approval of the manuscript.

Institutional review board statement: This study was reviewed and approved by the Ethics Committee of Asan Medical Center and University of Ulsan College of Medicine (2017-0210).

Informed consent statement: Patients were not required to provide informed consent for this study because the analysis used anonymous clinical data that were obtained after each patient had agreed to treatment with written consent.

Conflict-of-interest statement: None of the authors have any conflicts of interests to declare.

Data sharing statement: There are no additional data available in relation to this manuscript.

Open-Access: This article is an open-access article which was selected by an in-house editor and fully peer-reviewed by external reviewers. It is distributed in accordance with the Creative Commons Attribution Non Commercial (CC BY-NC 4.0) license, which permits others to distribute, remix, adapt, build upon this work non-commercially, and license their derivative works on different terms, provided the original work is properly cited and

the use is non-commercial. See: <http://creativecommons.org/licenses/by-nc/4.0/>

Manuscript source: Unsolicited manuscript

Correspondence to: Kyung Mo Kim, MD, Professor, Department of Pediatrics, Asan Medical Center Children's Hospital, University of Ulsan College of Medicine, 88, Olympic-ro 43-gil, Songpa-gu, Seoul 05505, South Korea. kmkim@amc.seoul.kr
Telephone: +82-2-30103380
Fax: +82-2-4733725

Received: November 10, 2017

Peer-review started: November 11, 2017

First decision: December 13, 2017

Revised: December 20, 2017

Accepted: December 26, 2017

Article in press: December 26, 2017

Published online: January 21, 2018

Abstract

AIM

To evaluate the use of fully covered self-expandable metal stents (FCSEMSs) for pancreatic duct strictures in children with chronic pancreatitis.

METHODS

Eight patients with refractory benign dominant stricture of the main pancreatic duct (MPD) were enrolled through chart reviews between December 2014 and June 2017 in a single center. Endoscopic retrograde cholangiopancreatography (ERCP) with placement of a 6-mm FCSEMS with dual flaps was performed. Endoscopic removal of FCSEMSs was performed with a snare or rat-tooth forceps. All procedures were performed by a pediatric gastroenterologist. For the assessment of outcomes, technical and clinical success, adverse events, and stent patency were evaluated retrospectively.

RESULTS

The placement and removal of the FCSEMSs were successful in all 8 patients. Five patients were boys and 3 were girls. The median age at initial FCSEMS placement was 12 years (range, 5-18 years). The diameters of all the inserted stents were 6 mm, and the lengths were 4-7 cm. The median indwelling time was 6 mo (range, 3-10 mo). No pancreatic sepsis, pancreatitis, cholestasis, or mortality occurred. There was no proximal and distal migration. All subjects showed a patent stent. On follow-up ERCP, the mean diameter of the stricture improved from 1.1 mm to 2.8 mm ($P < 0.05$), whereas that of upstream dilation improved from 8.4 mm to 6.3 mm ($P < 0.05$).

CONCLUSION

This initial experience showed that temporary FCSEMS placement is feasible and safe for the management of refractory benign MPD stricture in children.

Key words: Chronic pancreatitis; Pancreatic duct; Self-expandable metal stent; Child; Endoscopic retrograde cholangiopancreatography

© The Author(s) 2018. Published by Baishideng Publishing Group Inc. All rights reserved.

Core tip: This study reports the initial experience with the use of fully covered self-expandable metal stents (FCSEMSs) for recurrent benign pancreatic duct strictures in children. We indwelled 6-mm FCSEMSs with dual flaps in the pancreatic duct of pediatric patients for 6 mo. The placement and removal of the FCSEMSs were technically and clinically successful. There were no adverse events or stent obstruction. The findings support the applicability of FCSEMSs to the pediatric population.

Jeong IS, Lee SH, Oh SH, Park DH, Kim KM. Metal stents placement for refractory pancreatic duct stricture in children. *World J Gastroenterol* 2018; 24(3): 408-414 Available from: URL: <http://www.wjgnet.com/1007-9327/full/v24/i3/408.htm> DOI: <http://dx.doi.org/10.3748/wjg.v24.i3.408>

INTRODUCTION

Plastic stents (PSs) or metal stents have been widely used for the management of biliary and pancreatic duct strictures in endoscopic interventions^[1]. The fully covered self-expandable metal stent (FCSEMS) was designed to compensate for the defects of PSs and uncovered self-expandable metal stents (SEMSs). The SEMS has the advantages of longer patency and resolution of main pancreatic duct (MPD) strictures because its lumen diameter is larger than that of the PS^[2,3]. Meanwhile, the FCSEMS has been shown to improve tissue embedding by wrapping around the

frame of the uncovered SEMS^[4].

As SEMSs were initially used for malignant biliary obstruction^[5], FCSEMSs have been widely used for the management of biliary and pancreatic duct strictures in adults^[6]. FCSEMSs have proven to be a particularly useful intervention for malignant biliary obstruction^[7,8], and their use in the management of benign biliary strictures has been expanding steadily^[9]. In recent studies, FCSEMSs were increasingly used for the management of MPD strictures refractory to PS placement in adults^[10].

In general, studies on the application of stents in pediatric patients are lacking. However, most pediatric studies of endoscopic retrograde cholangiopancreatography (ERCP), including our previous study, investigated the use of PSs; therefore, stenting is an important indication in pediatric ERCP^[11-13]. One pediatric study showed that PS placement was effective for reducing the recurrence of pancreatitis^[14].

For these reasons, FCSEMSs may be useful even in pediatric populations. In this study, we evaluated the feasibility, safety, and therapeutic effect of FCSEMSs for the management of benign MPD strictures in pediatric patients with chronic pancreatitis (CP).

MATERIALS AND METHODS

Patients

This was a retrospective study of data collected through medical chart reviews between December 2014 and June 2017 at Asan Medical Center Children's Hospital in Seoul, South Korea. Eight patients with CP and benign dominant MPD stricture refractory to PS placement were enrolled (Table 1). Patients with MPD dilatation due to a malignant cause or trauma were excluded. Five patients were boys and 3 were girls. Their median age was 12 years (range, 5-18 years). The patients in this study had pancreatic divisum and/or gene mutations. The genetic mutations were *PRSS1* p.Gly208Ala, *PRSS1* p.Arg122His, *SPINK1* p.Asn34Ser, *SPINK1* p.Thr53Ilefs*41, *SPINK1* IVS3(+2)T>C, and *CFTR* p.Gln1352His. The strictures were located at the pancreatic head in 5 patients, at the pancreatic neck in 2 patients, and at the pancreatic body in 1 patient. The subjects had a history of previous PS trials after endoscopic sphincterotomy. The median number of days and total duration of PS placement were 2 d (range, 1-7 d) and 57 d (range, 1-431 d), respectively. The stricture was verified using imaging methods [ultrasonography, computed tomography, endoscopic retrograde pancreatography (ERP), or magnetic resonance cholangiography]. A dominant stricture was defined when the contrast medium on the ERP film was not washed out and the upstream MPD dilation was ≥ 6 mm in diameter^[15].

Procedure

The first session of placement and removal of FCSEMS

Table 1 Baseline characteristics of the 8 patients with refractory benign dominant main pancreatic duct strictures treated with a fully covered self-expandable metal stent

Case no.	Sex	Anatomical abnormality	Genetic mutation	No. of previous plastic ¹ stent placements	Placement time for each plastic stent (d), median (range)	Age at first insertion of a FCSEMS (yr)	Location of the stricture	Diameter and length of the stent (mm/cm)
1	F	Pancreas divisum	<i>PRSS1</i>	2	25.5 (19-32)	17	Head	6/4
2	M	-	<i>SPINK1</i>	7	42.0 (4-93)	12	Head	6/5
3	M	Incomplete pancreas divisum	-	4	126.5 (63-431)	10	Head	6/6
4	M	Pancreas divisum	<i>CFTR</i>	3	57.0 (1-109)	12	Body	6/7
5	F	-	<i>PRSS1</i>	1	46.0	18	Neck	6/7
6	M	-	<i>PRSS1</i>	2	58 (24-92)	5	Head	6/4
7	F	-	<i>SPINK1</i>	1	87	9	Head	6/4
8	M	-	<i>SPINK1</i>	1	29	16	Neck	6/7

¹Single and multiple stents were used in our study. FCSEMS: Fully covered self-expandable metal stent.

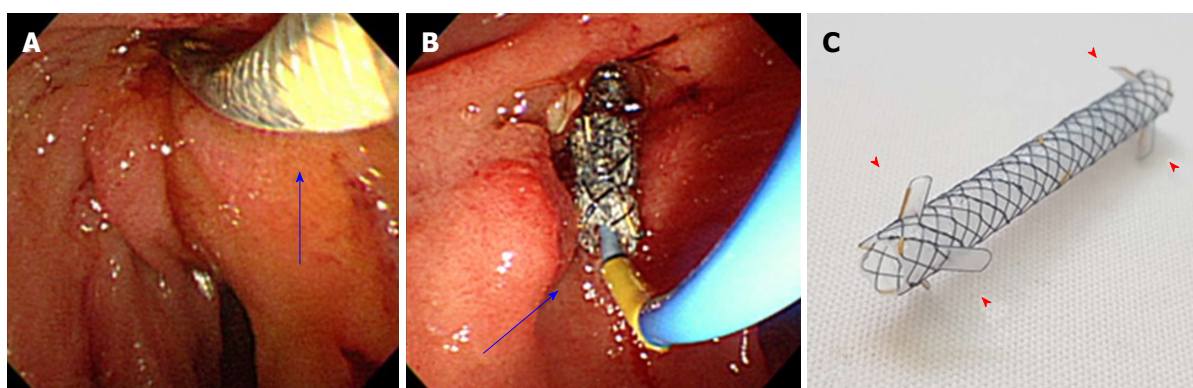


Figure 1 The fully covered self-expandable metal stent with 3 flaps at both ends used in this study (Hanarostent Biliary dual flap; M.I. Tech, Seoul, South Korea). A and B: The border between the gray and yellow points, shown by the blue arrows, marks the end of the stent. C: Small red arrow heads indicate the flaps.

was performed by an adult and pediatric gastroenterologist. Thereafter, all procedures were performed by a pediatric gastroenterologist. ERP was performed using either an adult duodenoscope (JF; Olympus Optical, Tokyo, Japan) or a therapeutic duodenoscope (TJF, Olympus Optical, Tokyo, Japan). Commercially available 6-mm FCSEMSs (Hanarostent Biliary dual flap; M.I. Tech, Seoul, South Korea) that consisted of nitinol material with a silicone covering membrane were used (Figure 1). After the endoscopic sphincterotomy, which had been described elsewhere, dilatation of the stricture was performed with a Soehendra stent retriever (Wilson Cook Medical, Winston-Salem, NC, United States) and/or a Hurricane dilator balloon (Boston Scientific, Natick, MA, United States) prior to stent placement. The insertion length of the stent was determined such that at least 1 cm of ampulla and normal area at the end of the stenosis were each covered. Repositioning was carried out until the stent was fully inflated and placed in the targeted location. On the basis of previous studies in adults^[16], stent removal was planned with rat-tooth forceps at 6 mo after placement, unless adverse events or episodes of pancreatitis had occurred. Informed consent was obtained from the parents of the patients, after the risks and benefits of the procedure and alternative treatments were explained. The study

protocol was approved by the institutional review board of Asan Medical Center (2017-0210).

Measurement of outcome

Feasibility was evaluated in terms of technical success, migration, and patency. Technical success was determined in accordance with the success of stent placement and removal. Successful stenting was attained when the stent passed through the stricture and the mesh spread easily, followed by a flow of pancreatic juice or washing fluid into the lumen of the stent. Successful removal was attained when the entire stent was removed without ductal leakage during contrast medium injection. Stent patency was assessed *via* visual inspection when the FCSEMS was removed. Efficacy was evaluated according to the improvements of the stricture and reduction of pancreatic pain and pancreatitis. Stricture improvement was evaluated by measuring the diameter of the stricture and the upstream dilation of the MPD as shown on pancreatography after the removal of the first metal stent. Safety was evaluated based on the occurrence of adverse events such as pancreatitis, cholestasis, bowel perforation, sepsis, or mortality. Blood pressure, heart rate, body temperature, laboratory tests (complete blood count and C-reactive protein, total bilirubin, direct bilirubin, amylase, and lipase levels), and abdominal

Table 2 Resolution of pancreatic duct strictures after the first placement of a fully covered self-expandable metal stent

Case no.	Duration of stenting (mo)	Diameter of the stricture (cm)		Diameter of the dilated segment ¹ (cm)	
		Pre	Post	Pre	Post
1	3	0.8	3.0	6.5	4.9
2	10	1.5	2.0	12.1	8.7
3	6	1.2	3.4	11.3	7.1
4	6	0.9	3.4	8.1	6.4
5	6	1.0	4.4	7.1	5.0
6	6	0.9	0.9	6.0	5.2
7	6	1.6	2.1	9.4	6.1
8	6	0.8	3.0	7.0	7.0
mean \pm SD	6 ²	1.1 \pm 0.3	2.8 \pm 0.9	8.4 \pm 2.5	6.3 \pm 1.6
<i>P</i> value	NA		0.017		0.018

¹The diameter was measured at the dilated segment upstream of the pancreatic duct stricture; ²Expressed as a median value. NA: Not applicable.

radiographs were conducted at 3 d and 14–21 d after FCSEMS placement to evaluate for short-term adverse events.

Statistical analyses

The Wilcoxon signed-rank test was used to compare changes in the diameter of the pancreatic duct between pre- and post-FCSEMS measurements. The IBM SPSS Statistics ver. 23.0 (IBM Co., Armonk, NY, United States) software was used for statistical analysis, and the stenting duration and patency are expressed as median values and ranges. *P* values < 0.05 were considered statistically significant.

RESULTS

Evaluation of feasibility

In all 8 patients, the placement of the FCSEMS with dual flaps was technically successful. The diameters of all inserted stents were 6 mm, and the lengths were 4–7 cm. The stents were successfully removed in all patients. The median indwelling time of stenting was 6 mo (range, 3–10 mo; Table 2). One patient had the stent removed 4 mo later than the planned time of removal because of personal reasons. However, stent embedding and occlusion did not develop (Figure 2). The patency of the stent lumen in the 8 patients with an FCSEMS had been maintained upon assessment at the time of stent removal. No stent migrations were observed.

Evaluation of efficacy

Recurrent pancreatitis and pancreatic pain did not develop in 4 patients during FCSEMS placement. In 1 patient, pain developed 3 mo after stenting, resulting in an early removal that revealed remnant stones blocking the distal MPD, although the lumen of the FCSEMS was patent. Following the removal of the stone and reinsertion of the stent, the pain disappeared and statistically significant improvements in stricture and upstream dilation were observed. The mean stricture diameter was 1.1 \pm 0.3 cm before stenting and 2.8 \pm 0.9 cm after stenting (*P* < 0.05).

The diameter of the upstream dilatation showed improvement from 8.4 \pm 2.5 cm to 6.3 \pm 1.6 cm after stenting (*P* < 0.05).

Safety

No adverse events such as pancreatitis, cholestasis, sepsis, bowel perforation, or mortality occurred during FCSEMS placement (Table 3).

DISCUSSION

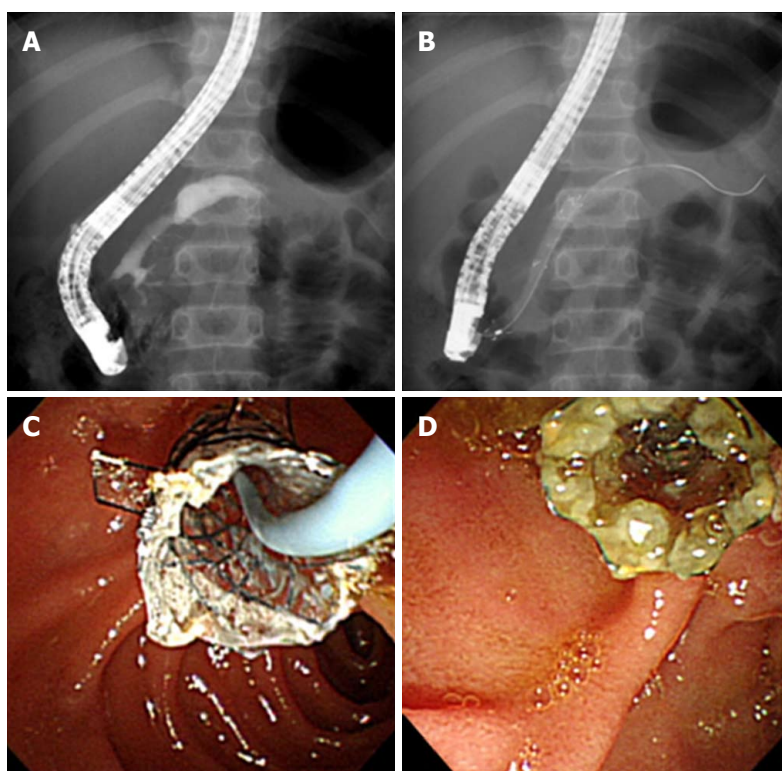
We, herein, report the first case series of the use of FCSEMSs in pediatric patients with CP and MPD strictures refractory to PS placement. Despite the small sample size and lack of long-term follow-up, this preliminary study presents evidence of the feasibility of the use of FCSEMS even in children, with technical and functional success. The disadvantages of PSs include migration and occlusion by sludge, resulting in necessary replacement at around 3 mo^[17]. In a previous study, FCSEMSs in the management of MPD stricture showed efficacy and safety at 6-mo intervals in adults^[16]. We suggest that our short-term outcomes are similar to the results for adults in terms of the improvement of strictures and the safety of the procedure^[17]. Uncovered SEMSs are associated with tissue ingrowth through the stent mesh, which makes their removal difficult^[18]. Tissue hyperplasia was reported in 23% of patients with partially covered stents^[19]. When the stent was pulled using rat-tooth forceps at the scheduled removal time, the stent moved easily out of the pancreatic duct without resistance.

Initially, the introduction of FCSEMSs solved the tissue ingrowth issue but led to greater stent migration, with an incidence as high as 41%^[20]. To overcome this challenge, fins and flaps have been incorporated into these devices^[8,21]. During our procedure with a dual-flapped FCSEMS, we did not encounter any bleeding, ulcers, or migration problems. In terms of bioavailability, the nitinol materials and silicone membranes of the FCSEMSs applied in the present study series have been used safely in a previous study on the drainage of walled-off necrosis in children^[22].

Table 3 Feasibility and safety of the placement of a fully covered self-expandable metal stent based on the occurrence of adverse events

Case no.	Stent migration	Stent patency	Pancreatitis	Cholestasis	Bowel perforation	Sepsis	Mortality
1	N	Y	N	N	N	N	N
2	N	Y	N	N	N	N	N
3	N	Y	N	N	N	N	N
4	N	Y	N	N	N	N	N
5	N	Y	N	N	N	N	N
6	N	Y	N	N	N	N	N
7	N	Y	N	N	N	N	N
8	N	Y	N	N	N	N	N

N: No; Y: Yes.

**Figure 2** Endoscopic retrograde pancreatography images for case 3. A: Pancreatography image showing a pancreatic duct stricture in the pancreatic neck before the insertion of the fully covered self-expandable metal stent (FCSEMS). B and C: An FCSEMS with flaps placed through the narrow pancreatic duct. D: The stent lumen showing patency at 6 mo after FCSEMS placement.

The major cause of CP in pediatric patients is hereditary pancreatitis rather than gallstones and alcoholism^[23,24]. Furthermore, because the pancreas reserve of pediatric patients may worsen over time, considering total pancreatectomy with autologous islet transplantation (TP-IAT) may be much more important in children^[25]. Surgery can result in a reduction of chronic pain through TP-IAT, which was shown to have a more protective effect against negative developments such as postoperative diabetes in preadolescence^[26]. However, insulin dependency was still present in approximately 40% of postoperative patients^[27]. Surgical burdens including morbidity, gastric motility dysfunction, and endocrine and exocrine replacement may also occur^[28,29]. Given that the cause of CP differs between adults and children, adult guidelines for treating this

condition as well as surgical recommendations cannot be automatically applied to pediatric cases. Therefore, until these problems are definitively resolved, endoscopic rather than surgical treatment should be considered in children.

In conclusion, this study showed that the use of FCSEMSs is feasible and safe and may be effective for the management of children with refractory benign MPD strictures. A future long-term investigation with a greater number of patients is warranted.

ARTICLE HIGHLIGHTS

Research background

Plastic stents (PSs) or metal stents have been widely used for the management of biliary and pancreatic duct strictures in endoscopic interventions. The fully

covered self-expandable metal stent (FCSEMS) was designed to compensate for the defects of PSs and uncovered self-expandable metal stents (SEMSs). FCSEMSs have been widely used for the management of biliary and pancreatic duct strictures in adults. In general, studies on the application of stents in pediatric patients are lacking. This study reported our experience with using FCSEMS as part of the treatment for benign main pancreatic duct (MPD) strictures in pediatric patients with chronic pancreatitis (CP).

Research motivation

The major cause of CP in pediatric patients is hereditary pancreatitis rather than gallstones and alcoholism, unlike in adults. Pediatric patients experience mental and physical repetitive pain from complications of MPD stricture during their long life. Stenting is an important indication in pediatric ERCP. In a previous study, the use of FCSEMSs in the management of MPD stricture showed efficacy and safety at 6-mo intervals in adults. We report that our short-term outcomes in children are similar to the results obtained for adults, in terms of the improvement of strictures and the safety of the procedure.

Research objectives

This study evaluated the feasibility, safety, and therapeutic effect of FCSEMSs for the management of benign MPD strictures in pediatric patients with CP.

Research methods

This was a retrospective study of data collected through medical chart reviews between December 2014 and June 2017 at Asan Medical Center Children's Hospital in Seoul, Korea. Eight patients with CP and benign dominant MPD stricture refractory to PS placement were enrolled. A dominant stricture was defined when the contrast medium on the endoscopic retrograde pancreatography film was not washed out and the upstream MPD dilation was ≥ 6 mm in diameter. Feasibility was evaluated based on technical success, migration, and patency. Technical success was determined in accordance with the success of stent placement and removal. Stricture improvement was evaluated by measuring the diameter of the stricture and the upstream dilation of the MPD. Safety was evaluated based on the occurrence of adverse events at 3 d and 14–21 d after FCSEMS placement. The Wilcoxon signed-rank test was used to compare changes in the diameter of the pancreatic duct between pre- and post-FCSEMS measurements. The IBM SPSS Statistics ver. 23.0 software was used for statistical analysis, and the stenting duration and patency are expressed as median values and ranges.

Research results

In all 8 patients, the placement of the 6-mm FCSEMS with dual flaps was technically successful. The median indwelling time of stenting was 6 mo (range, 3–10 mo). Stent embedding and occlusion did not develop. The patency of the stent lumen in the 8 patients with an FCSEMS had been maintained upon assessment at the time of stent removal. No stent migrations, adverse events, and mortalities were observed. After the removal of the stone and insertion of the stent, the pain disappeared and statistically significant improvements in stricture and upstream dilation were observed. The mean stricture diameter was 1.1 ± 0.3 cm before stenting and 2.8 ± 0.9 cm after stenting ($P < 0.05$). The diameter of the upstream dilatation showed improvement from 8.4 ± 2.5 cm to 6.3 ± 1.6 cm after stenting ($P < 0.05$). A future study with a larger sample size could clarify the usefulness of FCSEMS in children with benign MPD dilatation.

Research conclusions

This is the first study to investigate the efficacy and safety of the placement of the 6-mm FCSEMS with dual flaps in children. Despite the technical success and satisfactory clinical outcomes in these 8 children, the present study had certain limitations, including its retrospective design, relatively small sample size, and short follow-up period. In this study, we report our experience with using FCSEMS as part of the management of benign MPD strictures in pediatric patients with CP, providing valuable information about useful treatment for such patients. FCSEMS placement is an effective and safe management strategy for MPD strictures in pediatric patients with CP.

Research perspectives

We report the first case series of the use of FCSEMSs in the pediatric

population with CP and MPD strictures refractory to PS placement. Despite the small sample size and lack of long-term follow-up, this preliminary study presents evidence of the feasibility of using FCSEMS even in children, with technical and functional success. A future long-term investigation with a greater number of patients is warranted.

REFERENCES

- 1 **Mangiavillano B**, Pagano N, Baron TH, Arena M, Iabichino G, Consolo P, Opocher E, Luigiano C. Biliary and pancreatic stenting: Devices and insertion techniques in therapeutic endoscopic retrograde cholangiopancreatography and endoscopic ultrasonography. *World J Gastrointest Endosc* 2016; **8**: 143–156 [PMID: 26862364 DOI: 10.4253/wjge.v8.i3.143]
- 2 **Almadi MA**, Barkun A, Martel M. Plastic vs. Self-Expandable Metal Stents for Palliation in Malignant Biliary Obstruction: A Series of Meta-Analyses. *Am J Gastroenterol* 2017; **112**: 260–273 [PMID: 27845340 DOI: 10.1038/ajg.2016.512]
- 3 **Seicean A**, Vultur S. Endoscopic therapy in chronic pancreatitis: current perspectives. *Clin Exp Gastroenterol* 2014; **8**: 1–11 [PMID: 25565876 DOI: 10.2147/CEG.S43096]
- 4 **Shin HP**, Kim MH, Jung SW, Kim JC, Choi EK, Han J, Lee SS, Seo DW, Lee SK. Endoscopic removal of biliary self-expandable metallic stents: a prospective study. *Endoscopy* 2006; **38**: 1250–1255 [PMID: 17163328 DOI: 10.1055/s-2006-944969]
- 5 **Neuhaus H**, Hagenmüller F, Classen M. Self-expanding biliary stents: preliminary clinical experience. *Endoscopy* 1989; **21**: 225–228 [PMID: 2792016 DOI: 10.1055/s-2007-1012954]
- 6 **Hawes RH**. Diagnostic and therapeutic uses of ERCP in pancreatic and biliary tract malignancies. *Gastrointest Endosc* 2002; **56**: S201–S205 [PMID: 12447268 DOI: 10.1067/mge.2002.129003]
- 7 **Eum J**, Park DH, Ryu CH, Kim HJ, Lee SS, Seo DW, Lee SK, Kim MH. EUS-guided biliary drainage with a fully covered metal stent as a novel route for natural orifice transluminal endoscopic biliary interventions: a pilot study (with videos). *Gastrointest Endosc* 2010; **72**: 1279–1284 [PMID: 20870224 DOI: 10.1016/j.gie.2010.07.026]
- 8 **Tsuchiya T**, Itoi T, Gotoda T, Kuraoka K, Sofuni A, Itokawa F, Kurihara T, Ishii K, Tsuji S, Ikeuchi N, Tanaka R, Umeda J, Moriyasu F. A multicenter prospective study of the short-term outcome of a newly developed partially covered self-expandable metallic biliary stent (WallFlex®). *Dig Dis Sci* 2011; **56**: 1889–1895 [PMID: 21298481 DOI: 10.1007/s10620-011-1581-6]
- 9 **Tarantino I**, Mangiavillano B, Di Mitri R, Barresi L, Mocciano F, Granata A, Masci E, Curcio G, Di Pisa M, Marino A, Traina M. Fully covered self-expandable metallic stents in benign biliary strictures: a multicenter study on efficacy and safety. *Endoscopy* 2012; **44**: 923–927 [PMID: 22893134 DOI: 10.1055/s-0032-1310011]
- 10 **Park DH**, Kim MH, Moon SH, Lee SS, Seo DW, Lee SK. Feasibility and safety of placement of a newly designed, fully covered self-expandable metal stent for refractory benign pancreatic ductal strictures: a pilot study (with video). *Gastrointest Endosc* 2008; **68**: 1182–1189 [PMID: 19028228 DOI: 10.1016/j.gie.2008.07.027]
- 11 **Troendle DM**, Barth BA. Pediatric Considerations in Endoscopic Retrograde Cholangiopancreatography. *Gastrointest Endosc Clin N Am* 2016; **26**: 119–136 [PMID: 26616900 DOI: 10.1016/j.giec.2015.08.004]
- 12 **Cho JM**, Jeong IS, Kim HJ, Oh SH, Kim KM. Early adverse events and long-term outcomes of endoscopic sphincterotomy in a pediatric population: a single-center experience. *Endoscopy* 2017; **49**: 438–446 [PMID: 28399609 DOI: 10.1055/s-0043-103956]
- 13 **Agarwal J**, Nageshwar Reddy D, Talukdar R, Lakhtakia S, Ramchandani M, Tandan M, Gupta R, Pratap N, Rao GV. ERCP in the management of pancreatic diseases in children. *Gastrointest Endosc* 2014; **79**: 271–278 [PMID: 24060520 DOI: 10.1016/j.gie.2013.07.060]
- 14 **Oracz G**, Pertkiewicz J, Kierkus J, Dadalski M, Socha J, Ryzko J. Efficiency of pancreatic duct stenting therapy in children with

- chronic pancreatitis. *Gastrointest Endosc* 2014; **80**: 1022-1029 [PMID: 24852105 DOI: 10.1016/j.gie.2014.04.001]
- 15 **Dumonceau JM**, Delhay M, Tringali A, Dominguez-Munoz JE, Poley JW, Arvanitaki M, Costamagna G, Costea F, Devière J, Eisendrath P, Lakhtakia S, Reddy N, Fockens P, Ponchon T, Bruno M. Endoscopic treatment of chronic pancreatitis: European Society of Gastrointestinal Endoscopy (ESGE) Clinical Guideline. *Endoscopy* 2012; **44**: 784-800 [PMID: 22752888 DOI: 10.1055/s-0032-1309840]
 - 16 **Ogura T**, Onda S, Takagi W, Kitano M, Sano T, Okuda A, Miyano A, Masuda D, Takeuchi T, Fukunishi S, Higuchi K. Placement of a 6 mm, fully covered metal stent for main pancreatic head duct stricture due to chronic pancreatitis: a pilot study (with video). *Therap Adv Gastroenterol* 2016; **9**: 722-728 [PMID: 27582885 DOI: 10.1177/1756283X16651855]
 - 17 **England RE**, Martin DF, Morris J, Sheridan MB, Frost R, Freeman A, Lawrie B, Deakin M, Fraser I, Smith K. A prospective randomised multicentre trial comparing 10 Fr Teflon Tannenbaum stents with 10 Fr polyethylene Cotton-Leung stents in patients with malignant common duct strictures. *Gut* 2000; **46**: 395-400 [PMID: 10673303]
 - 18 **Cantù P**, Villa F, Baroni S, Brunati S. Comment to "Precut sphincterotomy, repeated cannulation and post-ERCP pancreatitis in patients with bile duct stone disease". *Dig Liver Dis* 2012; **44**: 625-626 [PMID: 22459567 DOI: 10.1016/j.dld.2012.02.011]
 - 19 **Deviere J**, Cremer M, Baize M, Love J, Sugai B, Vandermeeren A. Management of common bile duct stricture caused by chronic pancreatitis with metal mesh self expandable stents. *Gut* 1994; **35**: 122-126 [PMID: 8307432]
 - 20 **Deviere J**, Nageshwar Reddy D, Püspök A, Ponchon T, Bruno MJ, Bourke MJ, Neuhaus H, Roy A, González-Huix Lladó F, Barkun AN, Kortan PP, Navarrete C, Peetermans J, Blero D, Lakhtakia S, Dolak W, Lepilliez V, Poley JW, Tringali A, Costamagna G; Benign Biliary Stenoses Working Group. Successful management of benign biliary strictures with fully covered self-expanding metal stents. *Gastroenterology* 2014; **147**: 385-395; quiz e15 [PMID: 24801350 DOI: 10.1053/j.gastro.2014.04.043]
 - 21 **Park DH**, Lee SS, Lee TH, Ryu CH, Kim HJ, Seo DW, Park SH, Lee SK, Kim MH, Kim SJ. Anchoring flap versus flared end, fully covered self-expandable metal stents to prevent migration in patients with benign biliary strictures: a multicenter, prospective, comparative pilot study (with videos). *Gastrointest Endosc* 2011; **73**: 64-70 [PMID: 21184871 DOI: 10.1016/j.gie.2010.09.039]
 - 22 **Nabi Z**, Lakhtakia S, Basha J, Chavan R, Ramchandani M, Gupta R, Kalapala R, Darisetty S, Talukdar R, Reddy DN. Endoscopic Ultrasound-guided Drainage of Walled-off Necrosis in Children With Fully Covered Self-expanding Metal Stents. *J Pediatr Gastroenterol Nutr* 2017; **64**: 592-597 [PMID: 27977545 DOI: 10.1097/MPG.0000000000001491]
 - 23 **Schwarzenberg SJ**, Bellin M, Husain SZ, Ahuja M, Barth B, Davis H, Durie PR, Fishman DS, Freedman SD, Garipey CE, Giefer MJ, Gonska T, Heyman MB, Himes R, Kumar S, Morinville VD, Lowe ME, Nuehring NE, Ooi CY, Pohl JF, Troendle D, Werlin SL, Wilschanski M, Yen E, Uc A. Pediatric chronic pancreatitis is associated with genetic risk factors and substantial disease burden. *J Pediatr* 2015; **166**: 890-896.e1 [PMID: 25556020 DOI: 10.1016/j.jpeds.2014.11.019]
 - 24 **Lee YJ**, Kim KM, Choi JH, Lee BH, Kim GH, Yoo HW. High incidence of PRSS1 and SPINK1 mutations in Korean children with acute recurrent and chronic pancreatitis. *J Pediatr Gastroenterol Nutr* 2011; **52**: 478-481 [PMID: 21415673 DOI: 10.1097/MPG.0b013e31820e2126]
 - 25 **Chinnakotla S**, Beilman GJ, Dunn TB, Bellin MD, Freeman ML, Radosevich DM, Arain M, Amateau SK, Mallory JS, Schwarzenberg SJ, Clavel A, Wilhelm J, Robertson RP, Berry L, Cook M, Hering BJ, Sutherland DE, Pruett TL. Factors Predicting Outcomes After a Total Pancreatectomy and Islet Autotransplantation Lessons Learned From Over 500 Cases. *Ann Surg* 2015; **262**: 610-622 [PMID: 26366540 DOI: 10.1097/SLA.0000000000001453]
 - 26 **Bellin MD**, Carlson AM, Kobayashi T, Gruessner AC, Hering BJ, Moran A, Sutherland DE. Outcome after pancreatectomy and islet autotransplantation in a pediatric population. *J Pediatr Gastroenterol Nutr* 2008; **47**: 37-44 [PMID: 18607267 DOI: 10.1097/MPG.0b013e31815c8af9]
 - 27 **Kobayashi T**, Manivel JC, Bellin MD, Carlson AM, Moran A, Freeman ML, Hering BJ, Sutherland DE. Correlation of pancreatic histopathologic findings and islet yield in children with chronic pancreatitis undergoing total pancreatectomy and islet autotransplantation. *Pancreas* 2010; **39**: 57-63 [PMID: 19745778 DOI: 10.1097/MPA.0b013e3181b8ff71]
 - 28 **Bhayani NH**, Enomoto LM, Miller JL, Ortenzi G, Kaifi JT, Kimchi ET, Staveley-O'Carroll KF, Gusani NJ. Morbidity of total pancreatectomy with islet cell auto-transplantation compared to total pancreatectomy alone. *HPB (Oxford)* 2014; **16**: 522-527 [PMID: 23992021 DOI: 10.1111/hpb.12168]
 - 29 **Radomski M**, Zureikat AH. Total pancreatectomy and islet cell autotransplantation: outcomes, controversies and new techniques. *JOP* 2015; **16**: 1-10 [PMID: 25640776 DOI: 10.6092/1590-8577/2892]

P- Reviewer: Fu D S- Editor: Gong ZM L- Editor: A
E- Editor: Huang Y





Published by **Baishideng Publishing Group Inc**
7901 Stoneridge Drive, Suite 501, Pleasanton, CA 94588, USA
Telephone: +1-925-223-8242
Fax: +1-925-223-8243
E-mail: bpgoffice@wjgnet.com
Help Desk: <http://www.f6publishing.com/helpdesk>
<http://www.wjgnet.com>



ISSN 1007-9327

