

World Journal of *Clinical Oncology*

World J Clin Oncol 2018 September 14; 9(5): 71-118



**EDITORIAL**

- 71 Cancer prevention in patients with human immunodeficiency virus infection
Valanikas E, Dinas K, Tziomalos K

REVIEW

- 74 Oxytocin and cancer: An emerging link
Lerman B, Harricharran T, Ogunwobi OO
- 83 Role of polymorphisms in genes that encode cytokines and *Helicobacter pylori* virulence factors in gastric carcinogenesis
de Brito BB, da Silva FAF, de Melo FF

MINIREVIEWS

- 90 Resistance to FLT3 inhibitors in acute myeloid leukemia: Molecular mechanisms and resensitizing strategies
Zhou J, Chng WJ

ORIGINAL ARTICLE**Basic Study**

- 98 Tunable structure priors for Bayesian rule learning for knowledge integrated biomarker discovery
Balasubramanian JB, Gopalakrishnan V

Retrospective Study

- 110 FOLFIRI3-aflibercept in previously treated patients with metastatic colorectal cancer
Carola C, Ghiringhelli F, Kim S, André T, Barlet J, Bengrine-Lefevre L, Marijon H, Garcia-Larnicol ML, Borg C, Dainese L, Steuer N, Richa H, Benetkiewicz M, Larsen AK, de Gramont A, Chibaudel B

ABOUT COVER

Editorial Board Member of *World Journal of Clinical Oncology*, Jens Hoeppner, MD, Associate Professor, Surgeon, Department for General and Visceral Surgery, University of Freiburg, Freiburg 79106, Germany

AIM AND SCOPE

World Journal of Clinical Oncology (*World J Clin Oncol*, *WJCO*, online ISSN 2218-4333, DOI: 10.5306) is a peer-reviewed open access academic journal that aims to guide clinical practice and improve diagnostic and therapeutic skills of clinicians.

WJCO covers a variety of clinical medical topics, including etiology, epidemiology, evidence-based medicine, informatics, diagnostic imaging, endoscopy, tumor recurrence and metastasis, tumor stem cells, radiotherapy, chemotherapy, interventional radiology, palliative therapy, clinical chemotherapy, biological therapy, minimally invasive therapy, physiotherapy, psycho-oncology, comprehensive therapy, and oncology-related nursing. Priority publication will be given to articles concerning diagnosis and treatment of oncology diseases. The following aspects are covered: Clinical diagnosis, laboratory diagnosis, differential diagnosis, imaging tests, pathological diagnosis, molecular biological diagnosis, immunological diagnosis, genetic diagnosis, functional diagnostics, and physical diagnosis; and comprehensive therapy, drug therapy, surgical therapy, interventional treatment, minimally invasive therapy, and robot-assisted therapy.

We encourage authors to submit their manuscripts to *WJCO*. We will give priority to manuscripts that are supported by major national and international foundations and those that are of great clinical significance.

INDEXING/ABSTRACTING

World Journal of Clinical Oncology (*WJCO*) is now abstracted and indexed in PubMed, PubMed Central, Scopus, and Emerging Sources Citation Index (Web of Science), China National Knowledge Infrastructure (CNKI), and Superstar Journals Database.

EDITORS FOR THIS ISSUE

Responsible Assistant Editor: *Xiang Li*
Responsible Electronic Editor: *Yun-Xiao Juan Wu*
Proofing Editor-in-Chief: *Lian-Sheng Ma*

Responsible Science Editor: *Ying Dou*
Proofing Editorial Office Director: *Jin-Lei Wang*

NAME OF JOURNAL
World Journal of Clinical Oncology

ISSN
ISSN 2218-4333 (online)

LAUNCH DATE
November 10, 2010

EDITORIAL BOARD MEMBERS
All editorial board members resources online at <http://www.wjnet.com/2218-4333/editorialboard.htm>

EDITORIAL OFFICE
Jin-Lei Wang, Director
World Journal of Clinical Oncology
Baishideng Publishing Group Inc
7901 Stoneridge Drive, Suite 501, Pleasanton, CA 94588, USA
Telephone: +1-925-2238242

Fax: +1-925-2238243
E-mail: editorialoffice@wjnet.com
Help Desk: <http://www.wjpublishing.com/helpdesk>
<http://www.wjnet.com>

PUBLISHER
Baishideng Publishing Group Inc
7901 Stoneridge Drive,
Suite 501, Pleasanton, CA 94588, USA
Telephone: +1-925-2238242
Fax: +1-925-2238243
E-mail: bpgoffice@wjnet.com
Help Desk: <http://www.wjpublishing.com/helpdesk>
<http://www.wjnet.com>

PUBLICATION DATE
September 14, 2018

COPYRIGHT
© 2018 Baishideng Publishing Group Inc. Articles

published by this Open-Access journal are distributed under the terms of the Creative Commons Attribution Non-commercial License, which permits use, distribution, and reproduction in any medium, provided the original work is properly cited, the use is non commercial and is otherwise in compliance with the license.

SPECIAL STATEMENT
All articles published in journals owned by the Baishideng Publishing Group (BPG) represent the views and opinions of their authors, and not the views, opinions or policies of the BPG, except where otherwise explicitly indicated.

INSTRUCTIONS TO AUTHORS
<http://www.wjnet.com/bpg/gerinfo/204>

ONLINE SUBMISSION
<http://www.wjpublishing.com>

Retrospective Study

FOLFIRI3-aflibercept in previously treated patients with metastatic colorectal cancer

Candice Carola, François Ghiringhelli, Stefano Kim, Thierry André, Juliette Barlet, Leïla Bengrine-Lefevre, Hélène Marijon, Marie-Line Garcia-Larnicol, Christophe Borg, Linda Dainese, Nils Steuer, Hubert Richa, Magdalena Benetkiewicz, Annette K Larsen, Aimery de Gramont, Benoist Chibaudel

Candice Carola, Juliette Barlet, Hélène Marijon, Aimery de Gramont, Benoist Chibaudel, Department of Medical Oncology, Franco-British Institute, Levallois-Perret 92300, France

François Ghiringhelli, Leïla Bengrine-Lefevre, Department of Medical Oncology, Centre George François Leclerc, Dijon 21000, France

Stefano Kim, Christophe Borg, Department of Medical Oncology, CHU Besançon, Besançon 25030, France

Thierry André, Marie-Line Garcia-Larnicol, Nils Steuer, Department of Medical Oncology, Saint-Antoine Hospital, and Sorbonne Universités, UMPC, Paris 75012, France

Linda Dainese, Department of Anatomy-Pathology, Paris Pathology Institute, Malakoff 92240, France

Hubert Richa, Department of Gastrointestinal Surgery, Franco-British Institute, Levallois-Perret 92300, France

Magdalena Benetkiewicz, Fondation ARCAD, Levallois-Perret 92300, France

Annette K Larsen, Cancer Biology and Therapeutics, Centre de Recherche Saint-Antoine, INSERM U938, Faculté de Médecine Sorbonne Université, Paris 75012, France

ORCID number: Candice Carola (0000-0002-1539-6832); François Ghiringhelli (0000-0002-5465-8305); Stefano Kim (0000-0003-2851-7119); Thierry André (0000-0003-1204-9963); Juliette Barlet (0000-0001-9041-0617); Leïla Bengrine-Lefevre (0000-0002-0762-7303); Hélène Marijon (0000-0002-3781-6885); Marie-Line Garcia-Larnicol (0000-0002-0245-5979); Christophe Borg (0000-0001-6161-0169); Linda Dainese (0000-0002-1611-1288); Nils Steuer (0000-0003-2639-7846); Hubert Richa (0000-0003-2907-3695); Magdalena Benetkiewicz (0000-0001-7148-1647); Annette K Larsen (0000-0003-0341-9897); Aimery de Gramont (0000-0001-7940-9877); Benoist Chibaudel (0000-0002-0505-5794).

Author contributions: Carola C, Barlet J and Chibaudel B completed the data collection and prepared the manuscript; Carola C, de Gramont A and Chibaudel B analyzed the data; all authors had read and approved manuscript.

Institutional review board statement: This study was reviewed and approved by the Institutional Review Committee in Cancer Research (IRCCR) of Franco-British Hospital (FBI). Personal and filiation data including identity of every patient was protected with an added code in the Excel table. This is a retrospective case series that did not have any activity or contact with the patients.

Informed consent statement: Patients were not required to give informed consent to the study because the analysis used anonymous clinical data that were obtained after each patient agreed to treatment.

Conflict-of-interest statement: Dr. Chibaudel has nothing to disclose.

STROBE statement: The authors have read the STROBE Statement and the manuscript was prepared and revised according to the STROBE Statement.

Open-Access: This article is an open-access article which was selected by an in-house editor and fully peer-reviewed by external reviewers. It is distributed in accordance with the Creative Commons Attribution Non Commercial (CC BY-NC 4.0) license, which permits others to distribute, remix, adapt, build upon this work non-commercially, and license their derivative works on different terms, provided the original work is properly cited and the use is non-commercial. See: <http://creativecommons.org/licenses/by-nc/4.0/>

Manuscript source: Invited manuscript

Correspondence to: Benoist Chibaudel, MD, Department of Medical Oncology, Franco-British Institute, 4 rue Kléber, Levallois-Perret 92300, France. benoist.chibaudel@ihfb.org

Telephone: +33-14-7591923

Received: March 30, 2018

Peer-review started: March 30, 2018

First decision: May 2, 2018

Revised: June 11, 2018

Accepted: June 28, 2018

Article in press: June 28, 2018

Published online: September 14, 2018

Abstract

AIM

To evaluate the efficacy and safety of the modified FOLFIRI3-aflibercept as second-line therapy in patients with metastatic colorectal cancer.

METHODS

This is a retrospective multicenter cohort, evaluating the efficacy and safety of the association of aflibercept with FOLFIRI3 (day 1: aflibercept 4 mg/kg, folinic acid 400 mg/m², irinotecan 90 mg/m², 5-fluorouracil infusion 2400 mg/m² per 46 h; day 3: irinotecan 90 mg/m²) in patients with previously treated metastatic colorectal cancer. The primary endpoint was overall response rate (ORR). Secondary endpoints were disease control rate (DCR), progression-free survival (PFS), overall survival (OS), and safety.

RESULTS

Among 74 patients treated in four French centers, nine were excluded due to prior use of aflibercept ($n = 3$), more than one prior treatment line in irinotecan-naïve patients ($n = 3$), and inadequate liver function ($n = 3$). In the "irinotecan-naïve" patients ($n = 30$), ORR was 43.3% and DCR was 76.7%. Median PFS and OS were 11.3 mo (95%CI: 6.1-29.0) and 17.0 mo (95%CI: 13.0-17.3), respectively. The most common ($> 5\%$) grade 3-4 adverse events were diarrhea (37.9%), neutropenia (14.3%), stomatitis and anemia (10.4%), and hypertension (6.7%). In the "pre-exposed irinotecan" patients ($n = 35$), 20 (57.1%) received ≥ 2 prior lines of treatment. ORR was 34.3% and DCR was 60.0%. Median PFS and OS were 5.7 mo (95%CI: 3.9-10.4) and 14.3 mo (95%CI: 12.8-19.5), respectively.

CONCLUSION

Minimally modified FOLFIRI has improvement dramatically the FOLFIRI3-aflibercept efficacy, whatever prior use of irinotecan. A prospective randomized trial is warranted to compare FOLFIRI-aflibercept to FOLFIRI3-aflibercept.

Key words: Chemotherapy; Irinotecan; Aflibercept; Second-line; Colorectal cancer

© The Author(s) 2018. Published by Baishideng Publishing Group Inc. All rights reserved.

Core tip: Results obtained in this retrospective study show that minimally modified FOLFIRI has improvement dramatically the efficacy of the FOLFIRI3-aflibercept combination with high response rates and survivals in patients with previously treated metastatic colorectal cancer, whatever prior use of irinotecan. A prospective randomized trial is planned to compare FOLFIRI-aflibercept to FOLFIRI3-aflibercept.

Carola C, Ghiringhelli F, Kim S, André T, Barlet J, Bengrine-Lefevre L, Marijon H, Garcia-Larnicol ML, Borg C, Dainese L, Steuer N, Richa H, Benetkiewicz M, Larsen AK, de Gramont A, Chibaudel B. FOLFIRI3-aflibercept in previously treated patients with metastatic colorectal cancer. *World J Clin Oncol* 2018; 9(5): 110-118 Available from: URL: <http://www.wjgnet.com/2218-4333/full/v9/i5/110.htm> DOI: <http://dx.doi.org/10.5306/wjco.v9.i5.110>

INTRODUCTION

Standard second-line therapy in patients with previously treated metastatic colorectal cancer (mCRC) is doublet fluoropyrimidine-based chemotherapy with either irinotecan (FOLFIRI) or oxaliplatin (FOLFOX), depending on the regimen used in first-line, in association with antiangiogenic agents (e.g., bevacizumab, aflibercept, ramucirumab) or anti-EGFR agents in absence of RAS tumor gene mutation (e.g., cetuximab, panitumumab)^[1-8].

The standard FOLFIRI regimen was optimized by splitting the dose of irinotecan on day 1 [half dose before 5-fluorouracil (5-FU)] and day 3 (half dose after 5-FU) in the so-called FOLFIRI3 regimen^[9]. Drugs and doses are similar to FOLFIRI, except for suppression of the 5-FU bolus. The response rate was higher than that reported for FOLFIRI^[9,10]. Based on these results, FOLFIRI3 became the second-line regimen of choice in some centers. Adding bevacizumab to FOLFIRI3 has shown promising efficacy results in two prior retrospective trials [response rate 22% and 35%, median progression-free survival (PFS) 7.0 and 6.2 mo, median overall survival (OS) 13.0 and 10.8 mo, respectively]^[11,12]. The addition of aflibercept to FOLFIRI in patients with pretreated mCRC increased response rate from 11% to 20% and improved median PFS from 4.7 to 6.9 mo [hazard ratio (HR) = 0.76] and median OS from 12.1 to 13.5 mo (HR = 0.82)^[4]. Aflibercept was approved by the Food and Drug Administration on August 3, 2012 and by the European Medicines Agency on February 1, 2013 in combination with FOLFIRI for the treatment of patients with mCRC resistant to an oxaliplatin-containing regimen^[13]. Based on the VELOUR study results and non-randomized FOLFIRI3 studies, we retrospectively analyzed the safety and efficacy of the FOLFIRI3-aflibercept combination as second or later-line therapy in patients with mCRC.

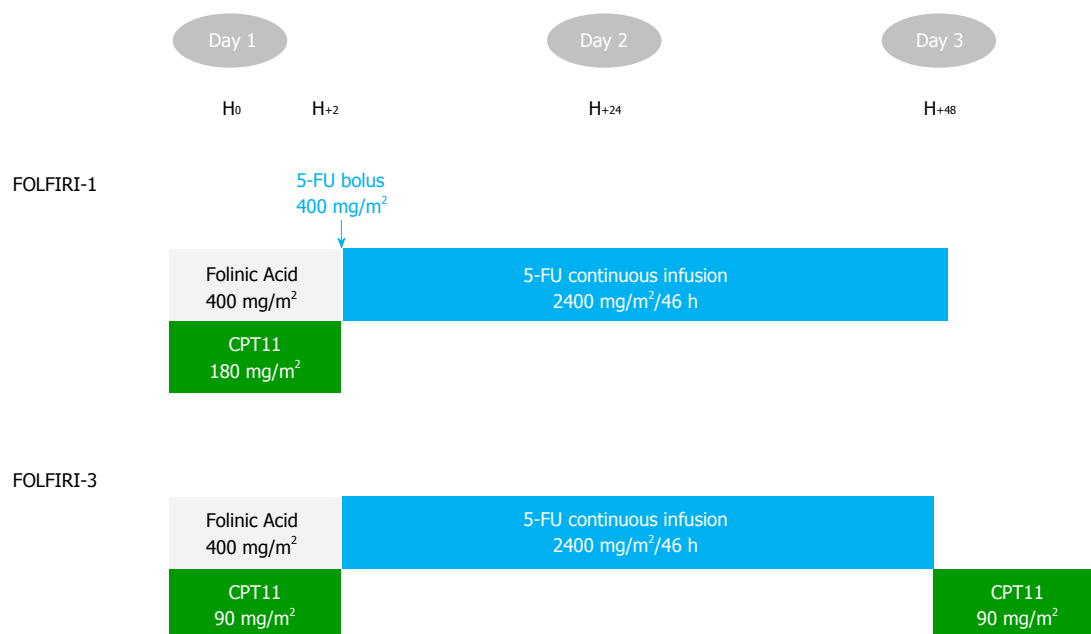


Figure 1 Comparison of the FOLFIRI-1 and FOLFIRI-3 schedules.

MATERIALS AND METHODS

This study was a retrospective, multicenter cohort, conducted in four French institutions (Centre Georges François Leclerc, Franco-British Hospital, University Hospital Besançon, and Saint-Antoine University Hospital) from September 2014 to December 2016. The main objective of this study was to evaluate the efficacy and safety profile of the aflibercept-FOLFIRI3 combination.

Population

All patients with previously treated mCRC and with FOLFIRI3-aflibercept administered from September 2014 to December 2016 were included. During the inclusion period, the decision to give FOLFIRI3-aflibercept to each patient or another treatment regimen was at physician's discretion. Prior use of bevacizumab was allowed, but prior exposure to aflibercept was not permitted. Patients were divided into two subgroups depending on the prior use of irinotecan and the number of previous treatment lines for metastatic disease: (1) "irinotecan-naïve" population including patients with no more than one prior line of treatment for metastatic disease; and (2) the "irinotecan pre-exposed" population including patients for whom the number of prior treatment lines for metastatic disease was not restricted.

Treatment administration

Treatment cycles were given intravenously every 14 d, as follows: Aflibercept 4 mg/kg over 1-h infusion (day 1), folinic acid 400 mg/m² over 2-h infusion (day 1), irinotecan 90 mg/m² over 60-90 min infusion (day 1), followed by continuous 5-FU 2400 mg/m² as a 46-h infusion (days 1 to 3), then irinotecan 90 mg/m²

over 60-90 min infusion (day 3; Figure 1). Treatment information (date of treatment, doses) was collected using CHIMIO® 5.4 (Computer Engineering, Paris, France) or BPC (GCS Emosist, Région Franche-Comté, France) softwares.

Endpoints

Treatment efficacy was evaluated with tumor response, PFS, and OS. The objective response rate (ORR) was defined as the proportion of patients having either complete response (CR) or partial response (PR) according to RECIST version 1.1. The best ORR was defined as the best response recorded from the start of treatment until progressive disease (PD). Disease control rate (DCR) was the sum of ORR and stable disease (SD). PFS was defined as the time from the date of starting treatment to the date of progression or death (from any cause). OS was defined as the time from the date of starting treatment to the date of patient death (from any cause) or to the last date the patient was known to be alive. Toxicity was evaluated according to the United States National Cancer Institute's Common Terminology Criteria for Adverse Events (NCI-CTCAE) version 4.03.

Statistical analysis

Follow-up and survival were estimated using the reverse Kaplan-Meier method and the Kaplan-Meier method, respectively, and were described using median with 95% confidence interval (CI). Qualitative variables were described using percent and means and continuous variables using medians (minimum-maximum). The cut-off date for statistical analysis was June 15, 2017. The final analysis was performed on the irinotecan-naïve and irinotecan pre-exposed

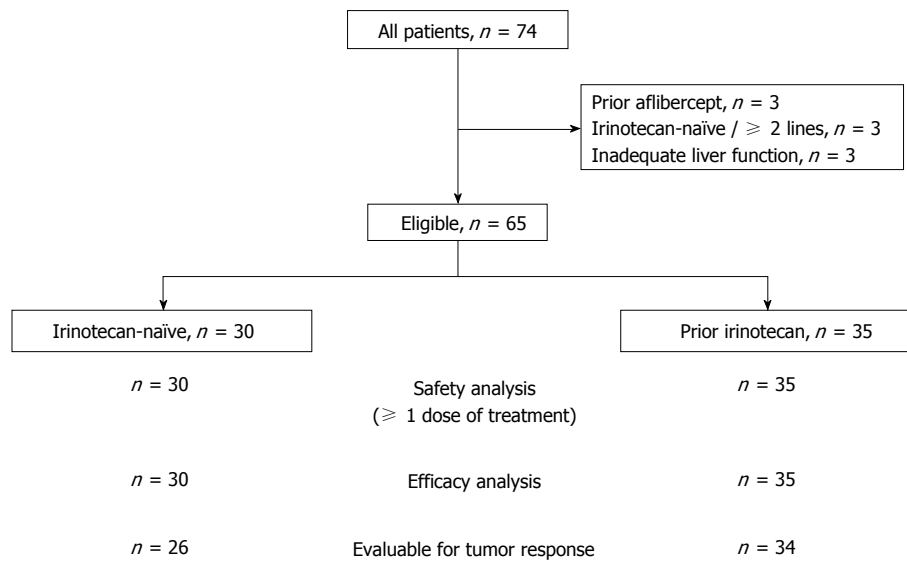


Figure 2 Flow diagram.

populations.

RESULTS

A total of 74 patients were treated (Figure 2). Nine patients were excluded from the analysis due to: Prior use of aflibercept ($n = 3$), more than one prior line of treatment in irinotecan-naïve patients ($n = 3$), or inadequate liver function (pretreatment alkaline phosphatase level $> 7 \times$ upper normal limit, $n = 3$). Thirty patients did not receive prior irinotecan (the irinotecan-naïve population) and 35 were previously exposed to irinotecan (the pre-exposed population).

Overall, 25 (38.5%) patients had an Eastern Cooperative Oncology Group performance status 0. The mean age was 63.1 years (range: 31.9-82.1); 23 (35.4%) had a single metastatic site, 49 (75.4%) had *RAS* mutated tumors, and two (3.1%) had *BRAF* mutated tumors. Prior use of bevacizumab and anti-EGFR were reported in 47 (72.3%) and 6 (9.2%) patients, respectively.

In the irinotecan-naïve population, five patients did not receive first-line therapy for metastatic disease ($n = 4$, early relapse after FOLFOX adjuvant therapy or $n = 1$, radiochemotherapy). In irinotecan pre-exposed population, 20 (57.1%) patients received more than two prior lines of treatment. Various irinotecan regimens (FOLFIRINOX, $n = 21$; FOLFIRI, $n = 10$; FOLFIRI3, $n = 4$) were previously given. The portion of patients with increased level of lactate dehydrogenase in the irinotecan pre-exposed population was higher than in that with the irinotecan-naïve patients (56.0% vs 17.6%; $P = 0.027$; Table 1).

Treatment exposure

In the irinotecan-naïve population, chemotherapy drugs (irinotecan and 5-FU) were given at standard dose in 12 (40.0%) patients. A lower dose of irinotecan and

5-FU were given in 15 (50.0%) and 4 (13.3%) patients, respectively. The median number of cycles was 8 (range: 1-19), and the median treatment duration was 3.7 mo (95%CI: 2.4-5.7). Dose reductions during treatment were performed in 7 (23.3%), 13 (43.3%), and 6 (20.0%) patients for aflibercept, irinotecan, and 5-FU, respectively. Granulocyte colony-stimulating factor (G-CSF) was given as primary prophylaxis in 14 (46.7%) patients and as secondary prevention in 3 (10.0%) patients. Erythropoietin was used in 5 (17.9%) patients. At the time of analysis, the treatment was still ongoing in 2 patients. The main reasons for stopping therapy were the occurrence of a limiting adverse event in 14 (46.7%) patients (diarrhea, $n = 8$; bleeding, $n = 1$; bowel perforation, $n = 1$; asthenia, $n = 1$; other, $n = 3$) or progression in 11 (36.7%) patients.

In the irinotecan pre-exposed population, chemotherapy drugs (irinotecan and 5-FU) were given at standard dose in 22 (62.9%) patients. A lower dose of irinotecan and 5-FU were given in 10 (28.6%), and 6 (17.1%) patients, respectively. The median number of cycles was 6 (range: 1-20), and the median treatment duration was 3.5 mo (95%CI: 2.1-5.6). Dose reductions during treatment were performed in 5 (14.3%), 9 (25.7%), and 7 (20.0%) patients for aflibercept, irinotecan, and 5-FU, respectively. G-CSF was given as primary prophylaxis in 13 (37.1%) patients and as secondary prevention in 2 (5.7%) patients. Erythropoietin was used in 3 (8.6%) patients. At the time of analysis, the treatment was still ongoing in 5 patients. The main reasons for stopping therapy were disease progression in 22 (62.9%) patients and the occurrence of limiting adverse events in 3 (8.6%) patients (diarrhea, $n = 2$; skin reactions, $n = 1$).

Response rate

In the irinotecan-naïve population, 4 (13.3%) patients

Table 1 Patient characteristics *n* (%)

Characteristics	Irinotecan-naïve cohort	Irinotecan-pre-exposed cohort	<i>P</i> -value
Age (yr)			0.793
< 70	21 (70.0)	23 (65.7)	
≥ 70	9 (30.0)	12 (34.3)	
Sex			0.623
Male	16 (53.3)	21 (60.0)	
Female	14 (46.7)	14 (40.0)	
ECOG PS			0.227
0	14 (46.7)	11 (31.4)	
1	13 (43.3)	15 (42.9)	
2	3 (10.0)	9 (25.7)	
Time to metastasis			0.314
Metachronous	9 (30.0)	15 (42.9)	
Synchronous	21 (70.0)	20 (57.1)	
No. of metastatic sites			0.118
1	14 (46.7)	9 (25.7)	
> 1	16 (53.3)	26 (74.3)	
No. of prior lines for metastatic disease			-
0	5 (16.7)	0 (0.0)	
1	25 (83.3)	15 (42.9)	
> 1	-	20 (57.1)	
Prior drug exposure			0.699
Oxaliplatin	29 (96.7)	35 (100.0)	
Bevacizumab	18 (60.0)	29 (82.9)	
Anti-EGFR	2 (6.7)	4 (11.4)	

ECOG PS: Eastern Cooperative Oncology Group performance status.

Table 2 Summary of the efficacy results

	Irinotecan-naïve, <i>n</i> = 30			Prior irinotecan, <i>n</i> = 35		
	<i>n</i>	% (ITT)	% (evaluable)	<i>n</i>	% (ITT)	% (evaluable)
Response rate						
CR	0	0	0	1	2.8	2.9
PR	13	43.3	50	11	31.4	32.4
SD	10	33.3	38.5	9	25.7	26.5
PD	3	10	11.5	13	37.1	38.2
NE	4	13.3	-	1	2.8	-
ORR	13	43.3	50	12	34.3	35.3
DCR	23	76.7	88.5	21	60	61.8
Survivals						
	median, mo	95%CI		median, mo	95%CI	
PFS	11.3	6.1-29.0		5.7	3.9-10.4	
OS	17.0	13.0-17.3		14.3	12.8-19.5	

RR: Response rate; ITT: Intention-to-treat; CR: Complete response; PR: Partial response; SD: Stable disease; PD: Progressive disease; NE: Not evaluable; ORR: Objective response rate; DCR: Disease control rate; PFS: Progression-free survival; OS: Overall survival.

were not evaluated for tumor response due to an early stop for limiting toxicity. ORR was reported in 13 patients [43.3%, intention-to-treat (ITT); 50.0%, evaluable patients] without CR, and DCR was reported in 23 patients (76.7%, ITT; 88.5%, evaluable patients). Three (10.0%) patients had PD at the first tumor evaluation (Table 2).

In the irinotecan pre-exposed population, one patient was not evaluable for tumor response (switch to intra-arterial chemotherapy after 2 treatment cycles). ORR was reported in 12 patients (34.3%, ITT; 35.3%, evaluable patients) including one CR, and

DCR was reported in 21 patients (60.0%, ITT; 61.8%, evaluable population). Thirteen (37.1%) patients had PD at the first tumor evaluation (Table 2). Among seven patients refractory to irinotecan, 1 (2.9%) had PR with FOLFIRI3-aflibercept, 2 (5.7%) had stable disease, 3 (8.6%) had PD, and 1 (2.6%) was not evaluable (Table 3).

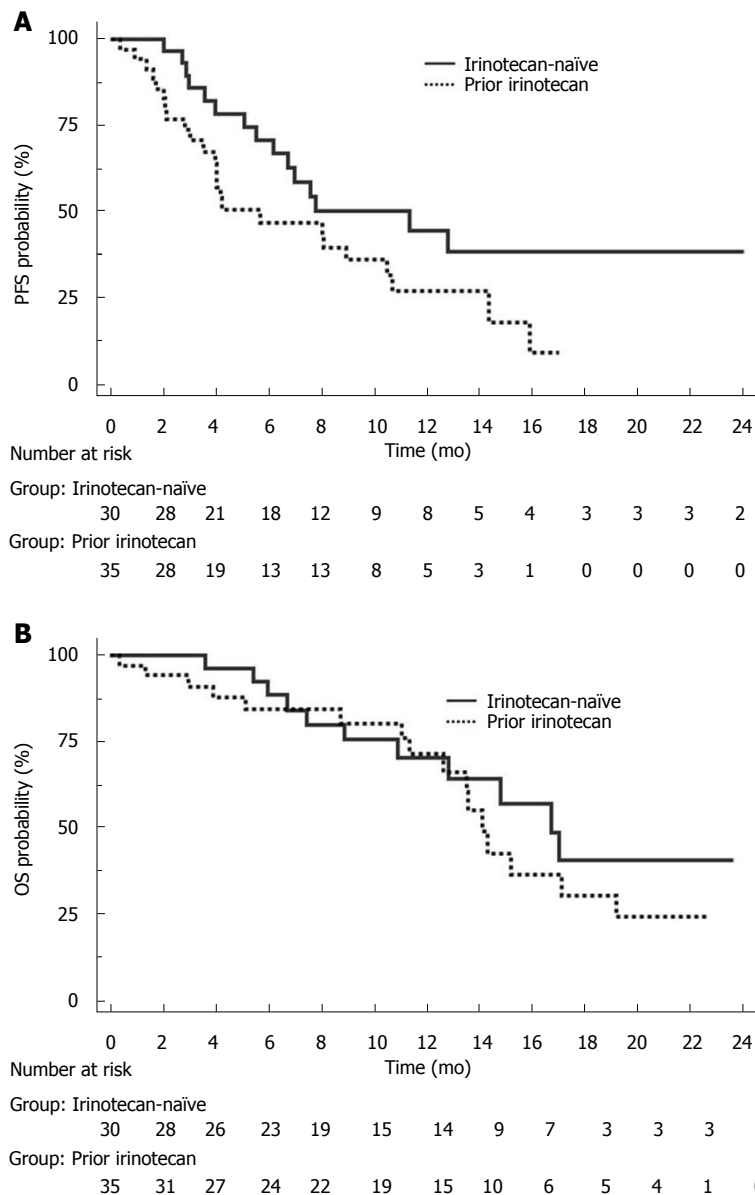
Survival

The median follow-up was 13.6 mo (95%CI: 9.6-17.7) in the irinotecan-naïve population and 14.2 mo (95%CI: 11.0-21.5) in the pre-exposed population (*P*

Table 3 Contingency table of tumor response with FOLFIRI3-aflibercept according to prior tumor response with irinotecan [*n* = 35, *n* (%)]

		FOLFIRI3-aflibercept				All
		CR/PR	SD	PD	NE	
Prior irinotecan-based regimen	CR/PR	5	3	7	0	15 (42.8)
	SD	4	4	2	0	10 (28.6)
	PD	1	2	3	1	7 (20.0)
	NE	2	0	1	0	3 (8.6)
	All	12 (34.3)	9 (25.7)	13 (37.1)	1 (2.8)	35

CR: Complete response; PR: Partial response; SD: Stable disease; PD: Progressive disease; NE: Not evaluable.

**Figure 3** Progression-free survival and overall survival according to prior exposure to irinotecan (*n* = 65). A: Progression-free survival; B: Overall survival.

= 0.692). In the irinotecan-naïve population, median PFS was 11.3 mo (95%CI: 6.1-29.0) and median OS was 17.0 mo (95%CI: 13.0-17.3; Figure 3A). A lower starting dose of irinotecan (< 90 mg/m²) did not impact PFS (*P* = 0.518) and OS (*P* = 0.311), but

decreased the incidence of severe neutropenia (0.0% vs 30.8%, respectively, *P* = 0.041). In the irinotecan pre-exposed population, median PFS was 5.7 mo (95%CI: 3.9-10.4) and median OS was 14.3 mo (95%CI: 12.8-19.5; Figure 3B).

Table 4 Selected ($\geq 5\%$) grade 3-4 adverse events (NCI CTCAE version 4.0) *n* (%)

SOC	PT	Irinotecan-naïve	Prior irinotecan	All
Any		17 (56.7)	15 (42.9)	32 (49.2)
Blood	Neutropenia	4 (13.3)	1 (2.9)	5 (7.7)
	Anemia	3 (10.0)	0 (0.0)	3 (4.6)
	Thrombocytopenia	0 (0.0)	0 (0.0)	0 (0.0)
Gastrointestinal	Nausea	2 (6.7)	0 (0.0)	2 (3.1)
	Vomiting	1 (3.3)	0 (0.0)	1 (1.5)
	Mucositis	3 (10.0)	3 (8.6)	6 (9.2)
	Diarrhea	11 (36.7)	9 (25.7)	20 (30.8)
Vascular	Hypertension	2 (6.7)	4 (11.4)	6 (9.2)

SOC: System Organ Class; PT: Preferred term.

Safety

In the irinotecan-naïve cohort, 17 (56.7%) patients experienced grade ≥ 3 toxicity (Table 4). The most common ($\geq 5\%$) grade 3-4 adverse events were diarrhea ($n = 11$, 36.7%), neutropenia ($n = 4$, 13.3%), anemia and mucositis ($n = 3$, 10.0%), and nausea and hypertension ($n = 2$, 6.7%). Any grade hemorrhage was reported in 4 (13.8%) patients, gastrointestinal perforation in 1 (3.3%) patient, and arterial thromboembolic event in 1 (3.3%) patient.

In the irinotecan pre-exposed cohort, 15 (42.9%) patients experienced grade ≥ 3 toxicity (Table 4). The most common ($\geq 5\%$) grade 3-4 adverse events were diarrhea ($n = 9$, 25.7%), hypertension ($n = 4$, 11.4%), and mucositis ($n = 3$, 8.6%).

Salvage surgery

Salvage surgery for metastatic disease was performed in 7 (10.0%) patients ($n = 4$, liver; $n = 1$, lung; $n = 1$, liver and lung; $n = 1$, peritoneum). A complete (R0) resection and liver pathological complete response were observed in all and one patient, respectively.

DISCUSSION

To our knowledge, this is the first report evaluating the FOLFIRI3-aflibercept combination in patients with previously treated mCRC. The response rate, which is a strong indicator of treatment efficacy, was unusually high not only in irinotecan-naïve patients (43%, ITT; 50%, evaluable), but also in irinotecan pre-exposed patients (34%, ITT, 35%, evaluable).

The median 11.3 mo PFS and median 17.0 mo OS in the irinotecan-naïve population receiving FOLFIRI3-aflibercept as second-line therapy compared favorably to the FOLFIRI-aflibercept combination in the pivotal phase III VELOUR study (response rate 19.8%, median 7.2 mo PFS, median 13.2 mo OS) and the FOLFIRI3 regimen without targeted agent (response rate 17%-23%, median 4-7 mo PFS, median 9-12 mo OS)^[4,9,10,14].

In the irinotecan pre-exposed population, patients received FOLFIRI3-aflibercept as salvage therapy.

Yet, median PFS and OS were 5.7 mo and 14.3 mo, respectively, and were comparable to figures observed in second-line trials^[8,15].

A high portion (27%) of patients had to stop the FOLFIRI3-aflibercept combination because of limiting toxicity, mainly diarrhea. Its frequency (38%) was twice as common as in the VELOUR study (19%), but in the same range as in previous studies using FOLFIRI3. It has been demonstrated that severe diarrhea induced by aflibercept is due to microscopic colitis, which can be managed successfully using oral budesonide and/or mesalamine treatment^[16,17]. Placental growth factor (PIGF) could play a role in the occurrence of diarrhea. The absence of PIGF blocks dextran sodium sulfate-induced colonic mucosal angiogenesis and increases mucosal hypoxia^[18,19]. Knockout of PIGF aggravates disease course in acute colitis^[20]. Neutropenia and stomatitis were at a lower incidence than in the FOLFIRI-aflibercept arm of the pivotal VELOUR study (13.3% vs 36.7%, neutropenia; 10.0% vs 13.8%, stomatitis), which can be explained by deletion of the 5-FU bolus in the FOLFIRI3 regimen and use of G-CSF in 49% of patients. In the irinotecan-naïve population, a lower starting dose of irinotecan (< 90 mg/m²) did not impact treatment efficacy, but decreased the incidence of severe neutropenia (0.0% vs 30.8%, $P = 0.041$).

The conversion to surgery of metastasis in second-line is another key finding that could modify the strategy in patients suitable for salvage surgery in case of response (sequential doublets versus triplets). The main limitation of this study is the retrospective design with a low number of patients. In conclusion, the combination of aflibercept and FOLFIRI3 in our study shows the encouraging efficacy results with high response rates and longer survivals in patients with previously treated mCRC, whatever the prior exposition to irinotecan. A randomized trial is warranted to compare FOLFIRI-aflibercept to FOLFIRI3-aflibercept.

ARTICLE HIGHLIGHTS

Research background

FOLFIRI3 is the second-line regimen of choice in patients with previously treated mCRC in some centers. Adding bevacizumab to FOLFIRI3 has shown

promising efficacy results in two prior retrospective trials. The addition of aflibercept to FOLFIRI in patients with pretreated mCRC increased response rate from 11% to 20% and improved median PFS from 4.7 to 6.9 mo.

Research motivation

The phase III VELOUR and non-randomized FOLFIRI3 studies results provide a backbone for our study.

Research objectives

The main objective of the study is to evaluate the safety and efficacy of the FOLFIRI3-aflibercept combination as second or later-line therapy in patients with mCRC.

Research methods

Patients with previously treated mCRC were given the aflibercept-FOLFIRI3 combination and were divided into "irinotecan-naïve" population including patients with no more than one prior line of treatment for metastatic disease, and the "irinotecan pre-exposed" population including patients for whom the number of prior treatment lines for metastatic disease was not restricted. The primary endpoint was overall response rate (ORR). Secondary endpoints were disease control rate, progression-free survival (PFS), overall survival (OS), and safety. Toxicity was evaluated according to the United States National Cancer Institute's Common Terminology Criteria for Adverse Events (NCI-CTCAE) version 4.03.

Research results

Minimally modified FOLFIRI has improved dramatically the efficacy of the FOLFIRI3-aflibercept combination with high response rates (43% in irinotecan-naïve patients and 34% in irinotecan pre-exposed patients) and survivals (median PFS: 11.3 mo, OS: 17.0 mo and PFS: 5.7 mo and OS: 14.3 mo, respectively) in patients with previously treated mCRC, whatever prior use of irinotecan.

Research conclusions

The combination of aflibercept and FOLFIRI3 shows encouraging efficacy results in patients with previously treated mCRC.

Research perspectives

A prospective randomized trial is planned to compare FOLFIRI3-aflibercept to FOLFIRI3-aflibercept.

REFERENCES

- 1 **Tournigand C**, André T, Achille E, Lledo G, Flesch M, Mery-Mignard D, Quinaux E, Couteau C, Buyse M, Ganem G, Landi B, Colin P, Louvet C, de Gramont A. FOLFIRI followed by FOLFOX6 or the reverse sequence in advanced colorectal cancer: a randomized GERCOR study. *J Clin Oncol* 2004; **22**: 229-237 [PMID: 14657227 DOI: 10.1200/jco.2004.05.113]
- 2 **Giantonio BJ**, Catalano PJ, Meropol NJ, O'Dwyer PJ, Mitchell EP, Alberts SR, Schwartz MA, Benson AB 3rd; Eastern Cooperative Oncology Group Study E3200. Bevacizumab in combination with oxaliplatin, fluorouracil, and leucovorin (FOLFOX4) for previously treated metastatic colorectal cancer: results from the Eastern Cooperative Oncology Group Study E3200. *J Clin Oncol* 2007; **25**: 1539-1544 [PMID: 17442997 DOI: 10.1200/JCO.2006.09.6305]
- 3 **Bennouna J**, Sastre J, Arnold D, Österlund P, Greil R, Van Cutsem E, von Moos R, Viéitez JM, Bouché O, Borg C, Steffens CC, Alonso-Orduña V, Schlichting C, Reyes-Rivera I, Bendahmane B, André T, Kubicka S; ML18147 Study Investigators. Continuation of bevacizumab after first progression in metastatic colorectal cancer (ML18147): a randomised phase 3 trial. *Lancet Oncol* 2013; **14**: 29-37 [PMID: 23168366 DOI: 10.1016/S1470-2045(12)70477-1]
- 4 **Van Cutsem E**, Tabernero J, Lakomy R, Prenen H, Prausová J, Macarulla T, Ruff P, van Hazel GA, Moiseyenko V, Ferry D, McKendrick J, Polikoff J, Tellier A, Castan R, Allegra C. Addition of aflibercept to fluorouracil, leucovorin, and irinotecan improves survival in a phase III randomized trial in patients with metastatic colorectal cancer previously treated with an oxaliplatin-based regimen. *J Clin Oncol* 2012; **30**: 3499-3506 [PMID: 22949147 DOI: 10.1200/JCO.2012.42.8201]
- 5 **Tabernero J**, Yoshino T, Cohn AL, Obermannova R, Bodoky G, Garcia-Carbonero R, Ciuleanu TE, Portnoy DC, Van Cutsem E, Grothey A, Prausová J, Garcia-Alfonso P, Yamazaki K, Clingan PR, Lonardi S, Kim TW, Simms L, Chang SC, Nasroulah F; RAISE Study Investigators. Ramucirumab versus placebo in combination with second-line FOLFIRI in patients with metastatic colorectal carcinoma that progressed during or after first-line therapy with bevacizumab, oxaliplatin, and a fluoropyrimidine (RAISE): a randomised, double-blind, multicentre, phase 3 study. *Lancet Oncol* 2015; **16**: 499-508 [PMID: 25877855 DOI: 10.1016/S1470-2045(15)70127-0]
- 6 **Peeters M**, Price TJ, Cervantes A, Sobrero AF, Ducreux M, Hotko Y, André T, Chan E, Lordick F, Punt CJ, Strickland AH, Wilson G, Ciuleanu TE, Roman L, Van Cutsem E, Tzekova V, Collins S, Oliner KS, Rong A, Gansert J. Randomized phase III study of panitumumab with fluorouracil, leucovorin, and irinotecan (FOLFIRI) compared with FOLFIRI alone as second-line treatment in patients with metastatic colorectal cancer. *J Clin Oncol* 2010; **28**: 4706-4713 [PMID: 20921462 DOI: 10.1200/JCO.2009.27.6055]
- 7 **Mishima H**, Oba K, Sakamoto J, Muro K, Yoshino T, Hyodo I, Maehara Y. FOLFIRI plus bevacizumab 5 mg/kg versus 10 mg/kg as second-line therapy in patients with metastatic colorectal cancer who have failed first-line bevacizumab plus oxaliplatin-based therapy: a randomized phase III study (EAGLE Study). *Jpn J Clin Oncol* 2012; **42**: 134-138 [PMID: 22167662 DOI: 10.1093/jco/hyr180]
- 8 **Mabro M**, Louvet C, André T, Carola E, Gilles-Amar V, Artru P, Krulik M, de Gramont A; GERCOR. Bimonthly leucovorin, infusion 5-fluorouracil, hydroxyurea, and irinotecan (FOLFIRI-2) for pretreated metastatic colorectal cancer. *Am J Clin Oncol* 2003; **26**: 254-258 [PMID: 12796595 DOI: 10.1097/01.COC.0000020581.59835.7A]
- 9 **Mabro M**, Artru P, André T, Flesch M, Maindault-Goebel F, Landi B, Lledo G, Plantade A, Louvet C, de Gramont A. A phase II study of FOLFIRI-3 (double infusion of irinotecan combined with LV5FU) after FOLFOX in advanced colorectal cancer patients. *Br J Cancer* 2006; **94**: 1287-1292 [PMID: 16622455 DOI: 10.1038/sj.bjc.6603095]
- 10 **Chibaudel B**, Maindault-Goebel F, Bachet JB, Louvet C, Khalil A, Dupuis O, Hammel P, Garcia ML, Bennamoun M, Brusquant D, Tournigand C, André T, Arbaud C, Larsen AK, Wang YW, Yeh CG, Bonnetain F, de Gramont A. PEPOL: a GERCOR randomized phase II study of nanoliposomal irinotecan PEP02 (MM-398) or irinotecan with leucovorin/5-fluorouracil as second-line therapy in metastatic colorectal cancer. *Cancer Med* 2016; **5**: 676-683 [PMID: 26806397 DOI: 10.1002/cam4.635]
- 11 **Ghiringhelli F**, Vincent J, Guio B, Chauffert B, Ladoire S. Bevacizumab plus FOLFIRI-3 in chemotherapy-refractory patients with metastatic colorectal cancer in the era of biotherapies. *Invest New Drugs* 2012; **30**: 758-764 [PMID: 21057973 DOI: 10.1007/s10637-010-9575-3]
- 12 **Bourges O**, Chibaudel B, Bengrine-Lefevre L, Afchain P, Tournigand C, Perez-Staub N, Maindault-Goebel F, Larsen AK, Louvet C, de Gramont A. FOLFIRI-3 + bevacizumab after the first-line in metastatic colorectal cancer. Colon and Rectum. American Society of Clinical Oncology Gastrointestinal Cancers (ASCO-GI) Symposium, 2009: Abstract 417
- 13 **European Medicines Agency (EMA)**. Zaltrap® (Aflibercept). Available from: URL: http://www.ema.europa.eu/docs/en_GB/document_library/EPAR_-_Summary_for_the_public/human/002532/WC500139486.pdf
- 14 **Bidard FC**, Tournigand C, André T, Mabro M, Figer A, Cervantes A, Lledo G, Bengrine-Lefevre L, Maindault-Goebel F, Louvet C, de Gramont A. Efficacy of FOLFIRI-3 (irinotecan D1,D3 combined with LV5-FU) or other irinotecan-based regimens in oxaliplatin-pretreated metastatic colorectal cancer in the GERCOR OPTIMOX1 study. *Ann Oncol* 2009; **20**: 1042-1047 [PMID: 19153116 DOI: 10.1093/annonc/mdn311]

- 10.1093/annonc/mdn730]
- 15 **Chong DQ**, Manalo M, Imperial M, Teo P, Yong G, Ng M, Tan IB, Choo SP, Chua C. Safety and efficacy of aflibercept in combination with fluorouracil, leucovorin and irinotecan in the treatment of Asian patients with metastatic colorectal cancer. *Asia Pac J Clin Oncol* 2016; **12**: 275-283 [PMID: 27075236 DOI: 10.1111/ajco.12496]
 - 16 **Ghiringhelli F**, Vincent J, Beltjens F, Bengrine L, Ladoire S. Fluorouracil, leucovorin and irinotecan associated with aflibercept can induce microscopic colitis in metastatic colorectal cancer patients. *Invest New Drugs* 2015; **33**: 1263-1266 [PMID: 26490656 DOI: 10.1007/s10637-015-0295-6]
 - 17 **Miehlke S**, Madisch A, Kupcinskas L, Petrauskas D, Böhm G, Marks HJ, Neumeyer M, Nathan T, Fernández-Bañares F, Greinwald R, Mohrbacher R, Vieth M, Bonderup OK; BUC-60/COC Study Group. Budesonide is more effective than mesalamine or placebo in short-term treatment of collagenous colitis. *Gastroenterology* 2014; **146**: 1222-1230.e1-2 [PMID: 24440672 DOI: 10.1053/j.gastro.2014.01.019]
 - 18 **Zhou Y**, Tu C, Zhao Y, Liu H, Zhang S. Placental growth factor enhances angiogenesis in human intestinal microvascular endothelial cells via PI3K/Akt pathway: Potential implications of inflammation bowel disease. *Biochem Biophys Res Commun* 2016; **470**: 967-974 [PMID: 26775845 DOI: 10.1016/j.bbrc.2016.01.073]
 - 19 **Kim KJ**, Cho CS, Kim WU. Role of placenta growth factor in cancer and inflammation. *Exp Mol Med* 2012; **44**: 10-19 [PMID: 22217448 DOI: 10.3858/emmm.2012.44.1.023]
 - 20 **Hindryckx P**, Waeytens A, Laukens D, Peeters H, Van Huysse J, Ferdinande L, Carmeliet P, De Vos M. Absence of placental growth factor blocks dextran sodium sulfate-induced colonic mucosal angiogenesis, increases mucosal hypoxia and aggravates acute colonic injury. *Lab Invest* 2010; **90**: 566-576 [PMID: 20142801 DOI: 10.1038/labinvest.2010.37]

P- Reviewer: Tsushima T, Velenik V, Zhang J **S- Editor:** Ji FF
L- Editor: A **E- Editor:** Tan WW





Published by **Baishideng Publishing Group Inc**
7901 Stoneridge Drive, Suite 501, Pleasanton, CA 94588, USA
Telephone: +1-925-223-8242
Fax: +1-925-223-8243
E-mail: bpgoffice@wjgnet.com
Help Desk: <http://www.f6publishing.com/helpdesk>
<http://www.wjgnet.com>

