

Supplementary Table 1 Detailed characteristics of the included studies and patients

	Year	Study design	Abstract/Full text	N	Age (mean)	Male (n)	Country	Continent	Lesions diameter (mm) (mean)	Number of lesions overall (n)	E (n)	S (n)	D (n)	C (n)	R (n)	C-R (n)	En-bloc resections (n)	Curative resection (n)	R0 resection (n)	Operation time (min) (mean)	Bleeding (n)	Perforations [n]	Perforation needing surgery (n)	Local recurrence (n)
scopy gical	2012	R	Full-text	440	82	314	Japan	Asia	*	470	0	470	0	0	0	*	*	366	*	*	15	13	*	3
	2013	R	Full-text	97	62	55	Japan	Asia	12	97	0	97	0	0	0	0	96	62	88	45	4	4	1	46
	2011	R	Full-text	497	*	*	Korea	Asia	*	497	0	497	0	0	0	*	481	*	486	*	28	6	*	2
	2011	R	Full-text	1188	71	864	Japan	Asia	20	1188	0	1188	0	0	0	*	919	*	*	90	37	49	*	*
	2009	R	Abstract	111	*	*	Japan	Asia	*	111	0	0	0	0	111	0	103	79	*	*	4	6	*	*
	2011	R	Full-text	162	61	102	Korea	Asia	32.9	163	0	0	0	77	86	*	141	*	*	49	2	12	0	1
gy and ormosan ation	2012	R	Abstract	100	62.5	70	China	Asia	*	100	0	100	0	0	0	0	100	*	93	*	0	2	0	*
	2009	R	Full-text	70	66.5	45	Taiwan	Asia	18.5	70	0	70	0	0	0	*	64	65	*	92.4	4	3	3	2
	2009	R	Abstract	50	*	*	Korea	Asia	27.9	53	0	0	0	0	0	53	35	*	*	79.9	6	13	0	0
ournal copy and ional	2012	P	Full-text	282	62.13	198	Korea	Asia	13.2	282	0	282	0	0	0	0	*	*	271	26.44	4	0	0	4
copy	2015	R	Full-text	118	66	81	Korea	Asia	*	118	0	118	0	0	0	0	109	29	92	*	8	5	*	12
	2013	P	Full-text	343	64	253	Korea	Asia	*	343	0	343	0	0	0	*	333	314	*	*	19	2	0	4
	2009	R	Full-text	952	62.1	502	Korea	Asia	*	1000	0	1000	0	0	0	*	953	*	901	47.8	162	12	1	10

Global Health Research Database: Clinical Trials and Publications																								
Study ID	Study Details			Participant Data			Geographic Data			Intervention Data			Outcome Data			Publication Data			Analysis Data			Summary Data		
	Year	Design	Document Type	N	Mean Age	Gender (%)	Country	Region	Language	Group	Duration (wks)	Follow-up (wks)	Primary Outcome	Secondary Outcome	Adverse Events	Journal	Volume	Issue	Page Count	Impact Factor	Citations	Open Access	Peer Review	Indexed
G001	2013	P	Full-text	76	*	49	Korea	Asia	*	76	0	76	0	0	0	*	76	*	76	*	1	2	*	*
	2013	RCT	Abstract	60	71.6	*	Japan	Asia	*	59	0	0	0	31	28	0	*	*	58	*	0	1	0	*
	2007	P	Full-text	186	*	*	Japan	Asia	29.9	200	0	0	0	148	52	0	183	*	141	*	2	12	1	2
G002	2015	R	Full-text	150	62	*	Korea	Asia	*	150	0	150	0	0	0	0	141	117	127	26	5	0	0	4
	2009	R	Full-text	154	*	118	Japan	Asia	*	154	0	154	0	0	0	*	154	*	143	75.8	3	3	*	*
	2009	R	Full-text	231	66.8	192	Japan	Asia	*	276	0	276	0	0	0	0	267	*	253	*	14	11	*	2
	2013	R	Full-text	122	*	*	Japan	Asia	*	125	0	0	0	0	0	125	118	113	*	*	1	3	0	*
G003	2014	R	Full-text	267	66.4	176	Japan	Asia	35.6	267	0	0	0	158	109	0	256	*	256	79.6	*	15	1	*
	2015	P	Full-text	78	62.1	38	China	Asia	32.4	78	0	0	0	37	41	0	69	64	67	64.1	1	7	1	0
G004	2013	R	Full-text	144	55.75	40	China	Asia	15.4	145	0	145	0	0	0	*	134	*	134	63.41	7	21	0	0
	2013	P	Full-text	52	68	48	Japan	Asia	20	56	56	0	0	0	0	*	56	*	53	69	0	0	0	*
G005	2010	R	Full-text	58	69.3	46	Japan	Asia	20.3	58	58	0	0	0	0	0	58	46	*	82	3	0	0	0
	2011	R	Full-text	784	70.2	717	Japan	Asia	17.5	961	0	961	0	0	0	*	950	847	*	64.8	50	34	1	0
G006	2012	P	Full-text	100	71	52	Japan	Asia	32.4	102	0	0	0	79	23	*	102	*	*	54.2	*	1	0	*
	2013	P	Abstract	218	62	151	Korea	Asia	12.2	218	0	218	0	0	0	0	211	*	208	25.1	4	1	*	2

Table 1. Publications on the epidemiology and clinical management of infectious diseases in Asia, 2000-2015																								
Topic	Year	Study Type	Title	Citations	Impact Factor	Number of Publications	Country	Region	Prevalence (%)	Incidence (per 100,000)	Mortality (per 100,000)	Hospitalization (per 100,000)	Antibiotic Resistance (%)	Vaccine Coverage (%)	Healthcare Expenditure (USD per capita)	Life Expectancy (years)	GDP per capita (USD)	Population (millions)	Urbanization (%)	Literacy Rate (%)	Internet Usage (%)	Mobile Phone Usage (%)	Social Media Usage (%)	Healthcare Access (per 100,000)
Epidemiology and Clinical Management	2012	R	Abstract	83	*	*	Japan	Asia	*	83	0	0	0	0	0	83	77	*	76	100.8	1	0	0	*
	2010	P	Abstract	87	70	66	Japan	Asia	*	87	0	87	0	0	0	0	86	69	73	*	5	1	0	0
Epidemiology and Clinical Management	2010	R	Abstract	343	*	*	Japan	Asia	*	379	0	379	0	0	0	0	365	*	*	*	22	13	*	*
	2009	R	Full-text	572	67.9	440	Japan	Asia	21.3	572	0	572	0	0	0	*	*	473	544	*	28	20	*	0
Epidemiology and Clinical Management	2011	P	Full-text	681	68.1	508	Japan	Asia	20.5	837	0	837	0	0	0	*	*	775	814	89.3	45	23	0	0
	2013	R	Full-text	1224	*	935	Japan	Asia	*	1463	128	1335	0	0	0	*	*	1239	1394	*	68	39	*	4
Epidemiology and Clinical Management	2007	R	Abstract	586	*	*	Japan	Asia	*	586	0	586	0	0	0	0	517	*	517	*	2	29	0	*
	2015	R	Full-text	65	67.3	39	Taiwan	Asia	19	69	0	69	0	0	0	0	59	51	*	85.5	8	2	1	5
Epidemiology and Clinical Management	2014	R	Abstract	73	*	*	Japan	Asia	37	73	0	0	0	0	73	0	73	60	70	*	2	0	0	1
	2009	P	Abstract	243	65	210	Japan	Asia	*	301	301	0	0	0	0	0	301	*	278	*	4	5	0	0
Epidemiology and Clinical Management	2012	R	Abstract	147	*	*	Japan	Asia	*	147	59	88	0	0	0	0	146	*	141	*	4	1	*	0
	2012	R	Abstract	385	66	327	Japan	Asia	*	512	512	0	0	0	0	0	512	*	481	*	7	12	*	1
Epidemiology and Clinical Management	2011	R	Abstract	101	*	*	Japan	Asia	30	104	0	0	0	79	25	0	97	*	*	80	1	1	0	0
	2009	R	Abstract	151	*	*	Japan	Asia	33.5	153	0	0	0	0	0	153	132	*	*	86	7	6	1	2

Table 1: Summary of Publications by Journal, Year, Design, and Region																								
Journal	Year	Design	Publication Type	Abstracts	Full-texts	References	Region	Continent	Prevalence (%)	Incidence (per 100,000)	Prevalence (per 100,000)	Incidence (per 100,000)	Prevalence (per 100,000)	Incidence (per 100,000)	Prevalence (per 100,000)	Incidence (per 100,000)	Prevalence (per 100,000)	Incidence (per 100,000)	Prevalence (per 100,000)	Incidence (per 100,000)	Prevalence (per 100,000)	Incidence (per 100,000)	Prevalence (per 100,000)	Incidence (per 100,000)
Journal of Epidemiology and Community Health	2006	R	Full-text	185	70.1	124	Japan	Asia	16.6	196	0	196	0	0	0	0	183	*	164	68	*	12	0	0
	2009	P	Full-text	278	69	160	Japan	Asia	26.8	292	0	0	0	214	78	0	263	*	233	*	2	24	2	1
	2009	R	Full-text	402	*	254	Korea	Asia	*	402	0	402	0	0	0	*	385	*	367	*	30	12	1	20
	2015	R	Full-text	82	68	71	Korea	Asia	*	82	16	66	0	0	0	*	71	54	65	37	5	1	0	5
	2009	P	Full-text	167	62	110	Korea	Asia	14.6	167	0	167	0	0	0	*	164	*	*	28	23	2	0	*
Journal of Epidemiology and Health	2013	R	Abstract	215	*	160	China	Asia	30	215	0	215	0	0	0	0	191	*	206	57	3	0	0	6
	2015	P	Full-text	1823	*	1285	Korea	Asia	*	1929	0	1929	0	0	0	0	1801	1643	1782	*	84	49	*	*
	2015	R	Full-text	163	*	89	Korea	Asia		163	0	0	0	100	63	*	152	150		*	4	14	*	0
Journal of Epidemiology and Health	2013	R	Full-text	104	76	79	Japan	Asia	*	104	0	104	0	0	0	0	101	17	74	78	9	14	*	3
Journal of Epidemiology and Health	2010	P	Abstract	87	*	*	Japan	Asia	*	90	0	90	0	0	0	0	*	*	84	*	2	2	0	*
	2013	R	Full-text	851	*	609	Japan	Asia	*	956	0	956	0	0	0	*	882	776	*	*	41	10	0	*
	2015	R	Full-text	138	*	117	Japan	Asia	*	138	0	138	0	0	0	*	133	*	122	*	8	2	*	*
Journal of Epidemiology and Health	2011	R	Full-text	468	70.4	344	Japan	Asia	14.6	468	0	468	0	0	0	*	454	*	454	*	25	20	2	0
	2013	R	Full-text	172	*	*	Japan	Asia	*	172	172	0	0	0	0	*	171	*	139	*	39	7	0	*
Journal of Epidemiology and Health	2012	RCT	Abstract	73	64	48	Korea	Asia	*	73	0	73	0	0	0	0	73	*	70	*	1	4	*	*
	2011	R	Abstract	91	66	86	Korea	Asia	*	100	100	0	0	0	0	0	85	*	92	*	1	17	5	*
	2008	R	Full-text	337	*	240	Korea	Asia	*	337	0	337	0	0	0	*	321	*	268	*	14	3	0	*

gy																								
Disease	2014	R	Full-text	126	55	70	Korea	Asia	12	126	0	126	0	0	0	*	117	*	81	*	3	3	0	1
copy	2013	R	Full-text	1246	64.2	866	Korea	Asia	19.4	1289	0	1289	0	0	0	*	1203	*	1265	*	*	35	1	*
of																								
gy	2015	RCT	Full-text	59	*	31	Korea	Asia	*	59	0	59	0	0	0	0	59	*	57	*	*	2	*	*
	2010	P	Abstract	884	*	*	Korea	Asia	*	884	0	884	0	0	0	0	884	*	801	*	32	10	0	160
ses and	2012	P	Abstract	56	61.5	36	Korea	Asia	16.8	56	0	56	0	0	0	0	42	*	55	43.1	6	0	0	1
copy	2013	R	Full-text	58	63.8	36	Korea	Asia	30.6	58	0	0	0	9	49	*	56	*	44	65.93	5	9	0	1
oenterology	2013	R	Full-text	74	61.8	40	Korea	Asia	10.9	74	0	74	0	0	0	*	67	23	54	*	1	3	0	4
	2011	R	Full-text	52	61	*	Japan	Asia	40	52	0	0	0	0	52	*	46	41	35	131	1	2	*	0
	2012	R	Full-text	297	65	175	Japan	Asia	37	297	0	0	0	185	112	*	259	239	*	106	5	14	1	17
oenterology	2010	R	Abstract	60	*	*	Korea	Asia	40.05	60	0	0	0	24	36	0	58	*	27	*	*	3	0	1
	2009	R	Full-text	62	*	*	Japan	Asia	*	62	0	0	0	0	0	62	56	*	*	*	*	3	0	*
	2012	R	Abstract	50	*	*	Japan	Asia	*	56	56	0	0	0	0	0	56	*	*	92.4	0	3	0	0
scopy	2014	R	Full-text	438	69.7	316	Japan	Asia	14.6	438	0	438	0	0	0	*	428	364	*	47	19	23	0	5
gy and	2010	R	Full-text	395	65.8	259	Japan	Asia	*	418	0	0	0	329	89	0	408	351	386	*	10	22	1	1
colon and																								
	2013	R	Abstract	452	*	*	Korea	Asia	24.5	471	0	0	0	0	0	471	448	*	419	*	*	33	3	2
	2009	R	Abstract	134	*	*	Korea	Asia	28.2	134	0	0	0	0	0	134	119	*	*	*	0	12	2	0

Table 1: Comparison of research findings across different studies and regions																								
Study ID	Study Details			Region A Data			Region B Data			Region C Data			Region D Data			Region E Data			Region F Data			Region G Data		
	Year	Study Type	Publication Type	Count	Avg	Max	Count	Avg	Max	Count	Avg	Max	Count	Avg	Max	Count	Avg	Max	Count	Avg	Max	Count	Avg	Max
Study 1	2012	R	Full-text	314	61	175	Korea	Asia	28.9	314	0	0	0	254	60	*	291	*	275	54.73	2	25	2	2
	2013	P	Full-text	966	*	590	Korea	Asia	24.1	1000	0	0	0	705	295	0	973	*	911	*	4	53	3	3
	2010	R	Abstract	573	*	*	Korea	Asia	23.7	600	0	0	0	0	0	600	570	*	542	54.7	*	37	3	2
Study 2	2014	R	Abstract	77	*	*	Korea	Asia	37.7	77	0	0	0	0	0	77	73	*	*	*	3	7	1	0
	2010	R	Full-text	461	62	324	Korea	Asia	*	487	0	487	0	0	0	0	428	376	*	*	23	9	*	8
	2013	P	Abstract	66	67.2	52	China	Asia	20	66	0	66	0	0	0	0	61	57	*	45	18	1	0	3
Study 3	2013	P	Full-text	1328	57.6	904	Korea	Asia	14.6	1461	0	1461	0	0	0	*	1371	*	1345	66.8	64	33	*	*
	2009	R	Abstract	1635	*	*	Japan	Asia	*	1635	138	1136	0	0	0	361	1620	*	*	*	43	29	*	0
	2010	P	Abstract	91	*	*	Japan	Asia	*	128	128	0	0	0	0	0	127	*	124	*	*	0	0	*
Study 4	2009	P	Abstract	543	*	*	Japan	Asia	*	543	0	543	0	0	0	0	*	*	513	*	27	33	0	6
	2009	R	Full-text	243	61.8	191	Korea	Asia	*	243	0	243	0	0	0	*	233	*	226	33.4	13	11	0	0
	2015	R	Full-text	1527	*	1250	Korea	Asia	*	1577	0	1577	0	0	0	0	1489	1315	1344	*	64	43	*	3
Study 5	2015	R	Abstract	83	55.8	47	Japan	Asia	5.8	85	0	0	0	0	85	0	*	64	82	32.1	2	0	0	0
	2013	R	Abstract	227	*	*	Japan	Asia	*	236	0	0	0	0	0	236	224	*	215	*	3	13	2	1
	2015	R	Full-text	122	67.9	72	Japan	Asia	27.1	134	0	0	0	83	51	*	116	114	116	63.5	5	9	0	*

Table 1: Publications in the field of Gastroenterology and Hepatology (2009-2015)																								
Journal	Year	Study Type	Title	Abstracts			Country	Region	Citations	References	Impact Factor	H-index	S-index	I-index	J-index	K-index	L-index	M-index	N-index	O-index	P-index	Q-index	R-index	S-index
				Count	Score	Score																		
Gastroscopy	2012	R	Abstract	139	*	90	Japan	Asia	*	140	0	0	0	140	0	0	121	*	*	70	1	6	*	*
	2011	R	Full-text	56	66	49	Japan	Asia	*	56	0	56	0	0	0	0	55	*	*	141	4	1	0	*
	2013	P	Full-text	816	66.6	468	Japan	Asia	39.4	816	0	0	0	520	296	*	771	738	*	96	18	16	2	*
Gastroscopy	2009	R	Full-text	106	68.4	82	Japan	Asia	*	122	0	122	0	0	0	*	115	*	113	84.4	2	3	1	0
	2015	P	Full-text	300	68	157	Japan	Asia	30	300	0	0	0	217	83	*	275	273	*	90	15	5	1	*
Journal of Gastroenterology	2013	P	Abstract	300	*	*	Japan	Asia	30	300	0	0	0	0	0	300	276	270	*	90	15	5	*	*
	2015	R	Full-text	1161	70.22	1012	Japan	Asia	16.31	1332	0	1332	0	0	0	*	1312	*	1271	83.48	57	20	*	6
	2015	P	Abstract	63	*	*	Japan	Asia	5.3	66	0	8	4	0	54	0	66	*	*	41	2	3	1	0
Gastroenterology	2012	R	Abstract	85	*	*	Japan	Asia	30.9	105	105	0	0	0	0	0	100	*	79	*	0	1	0	0
	2014	R	Full-text	150	*	92	Japan	Asia	*	150	0	0	0	119	31	0	148	137	146	*	0	0	0	*
	2010	R	Full-text	290	65.3	94	Japan	Asia	28.9	310	0	0	0	229	81	0	280	*	231	*	5	15	1	4
	2015	R	Full-text	582	67	410	Japan	Asia	35.5	609	0	0	0	385	224	0	581	*	573	85.1	35	31	*	*
Gastroenterology	2010	P	Full-text	143	71.7	109	Japan	Asia	19.5	143	0	143	0	0	0	*	134	*	134	83.5	8	2	*	0
	2014	P	Full-text	669	*	571	Japan	Asia	*	750	0	750	0	0	0	*	690	615	690	*	42	10	*	*
Colon and Rectal Surgery	2010	P	Full-text	282	69	162	Japan	Asia	26.9	296	0	0	0	216	80	*	264	*	234	*	2	24	2	1
	2012	R	Abstract	72	*	*	Japan	Asia	19	72	72	0	0	0	0	0	72	*	69	*	*	0	0	0
Colon and Rectal Surgery	2013	R	Full-text	128	69.6	116	Japan	Asia	13	139	0	139	0	0	0	*	131	109	118	60	2	2	1	0

nd  
icine  
  
copy  
al of  
y

	2014	R	Full-text	51	67.4	47	Japan	Asia	15	79	0	79	0	0	0	*	73	51	59	90	3	5	0	4
	2011	R	Full-text	2052	*	*	Japan	Asia	*	2052	0	2052	0	0	0	*	*	1704	*	*	*	62	1	*
	2006	R	Full-text	303	67	*	Japan	Asia	*	303	0	303	0	0	0	0	281	223	*	*	*	11	0	3
	2014	R	Full-text	617	*	*	Japan	Asia	*	617	0	617	0	0	0	0	605	596	*	*	7	11	1	2
	2012	P	Abstract	1209	*	*	Japan	Asia	*	1332	0	1332	0	0	0	0	*	1060	*	*	26	39	*	*
	2014	R	Full-text	97	61.9	54	Japan	Asia	*	97	0	97	0	0	0	*	86	*	86	*	6	1	0	0
	2015	P	Full-text	716	66.2	409	Japan	Asia	39.6	716	0	0	0	461	255	*	680	*	*	*	18	8	*	10
	2006	R	Full-text	185	*	*	Japan	Asia	*	195	0	195	0	0	0	*	162	*	162	84.4	44	13	4	0
	2012	R	Full-text	101	59	48	Japan	Asia	8	103	0	103	0	0	0	*	102	85	*	*	9	1	0	1
	2015	R	Abstract	84	66.8	73	Japan	Asia	*	84	84	0	0	0	0	0	84	*	76	*	0	0	0	0
	2012	R	Abstract	149	*	*	Japan	Asia	*	149	149	0	0	0	0	0	149	*	*	*	0	10	*	0
	2008	P	Full-text	314	*	230	Japan	Asia	*	314	0	314	0	0	0	*	306	*	306	*	26	14	0	*
	2009	R	Full-text	84	*	*	Japan	Asia	22.9	107	107	0	0	0	0	*	107	*	94	*	0	4	0	1
	2006	R	Full-text	160	71.4	115	Japan	Asia	23.7	171	0	171	0	0	0	0	161	*	161	80	18	6	0	0
	2005	R	Full-text	102	*	*	Japan	Asia	28	102	102	0	0	0	0	*	95	*	*	*	*	0	0	0
	2013	P	Abstract	105	*	*	Korea	Asia	*	105	0	105	0	0	0	0	96	73	83	*	3	4	*	1

enterology  
y



Table 1: Summary of Publications by Disease, Study Type, and Region																								
Disease	Year	Study Type	Publication Type	North America			Europe			Asia			Africa			Oceania			Latin America			Middle East		
				Count	Mean Age	Median Age	Count	Mean Age	Median Age	Count	Mean Age	Median Age	Count	Mean Age	Median Age	Count	Mean Age	Median Age	Count	Mean Age	Median Age	Count	Mean Age	Median Age
Disease A	2013	R	Full-text	354	63.5	277	Korea	Asia	*	366	0	366	0	0	0	*	340	*	347	*	14	10	*	4
	2013	P	Full-text	1367	*	941	Korea	Asia	*	1485	0	1485	0	0	0	*	1432	*	1338	*	50	35	*	*
	2015	R	Abstract	225	65	215	Korea	Asia	37	261	261	0	0	0	0	0	245	200	234	45	3	19	*	0
Disease B	2015	R	Full-text	51	48.47	33	Korea	Asia	7.73	51	0	0	0	0	51	0	*	*	40	14.43	4	0	0	*
	2014	P	Abstract	331	62.7	230	China	Asia	39.8	366	366	0	0	0	0	0	366	*	287	*	0	0	*	*
	2014	RCT	Full-text	50	66.3	30	Japan	Asia	35.5	50	0	0	0	40	10	*	49	*	*	51.12	0	1	0	0
Disease C	2010	R	Full-text	145	64	*	Japan	Asia	37	145	0	0	0	72	73	*	122	*	*	108	2	9	0	3
	2007	P	Full-text	198	64	115	Japan	Asia	35	200	0	0	0	139	61	*	168	167	140	90	4	10	1	1
	2009	R	Abstract	1111	*	*	Japan	Asia	39	1111	0	0	0	0	0	1111	978	989	*	116	4	62	5	*
Disease D	2013	R	Full-text	806	66	*	Japan	Asia	37	806	0	0	0	592	214	0	728	702	*	100	15	23	2	*
	2010	P	Full-text	1090	66	677	Japan	Asia	35	1111	0	0	0	774	337	*	978	990	*	116	17	58	4	3
	2011	R	Abstract	1090	*	*	Japan	Asia	35	1111	0	0	0	0	0	1111	978	989	*	116	17	54	*	6
Disease E	2014	P	Abstract	1564	67.6	898	Japan	Asia	32.5	1564	0	0	0	1047	517	0	1484	*	1278	*	62	53	8	*
	2014	R	Full-text	78	73.7	64	Japan	Asia	17.1	94	0	94	0	0	0	0	91	67	89	46.4	4	3	*	*
	2013	R	Full-text	95	69.1	77	Japan	Asia	12	95	0	95	0	0	0	0	86	77	80	70	0	6	1	3
Disease F	2014	R	Full-text	80	68.1	54	Japan	Asia	34.9	80	0	0	0	56	24	0	75	*	60	108.8	3	6	0	*
	2013	R	Abstract	521	*	*	Japan	Asia	*	616	0	616	0	0	0	0	601	*	*	*	8	11	*	0
	2015	R	Full-text	1105	*	748	Korea	Asia	*	1105	0	1105	0	0	0	*	1026	1008	1081	*	44	32	0	*

Table 1: Summary of Publications on Gastric Cancer Treatment (2007-2015)																								
Journal	Year	Study Type	Article Type	Citations	Impact Factor	Reads	Country	Region	Median Age	Sample Size	Events	Events/Person-Year	Events/Person-Year	Events/Person-Year	Events/Person-Year	Events/Person-Year	Events/Person-Year	Events/Person-Year	Events/Person-Year	Events/Person-Year	Events/Person-Year	Events/Person-Year	Events/Person-Year	Events/Person-Year
Journal of Clinical Oncology	2013	R	Full-text	873	69.9	549	Japan	Asia	22.2	1047	64	850	4	0	0	129	987	*	*	46	53	12	0	0
	2012	P	Full-text	418	70.4	314	Japan	Asia	*	485	0	485	0	0	0	*	454	433	414	*	18	35	0	0
	2014	RCT	Full-text	100	*	82	Japan	Asia	*	105	0	105	0	0	0	*	105	*	104	*	4	1	0	*
	2012	R	Abstract	1713	*	*	Japan	Asia	*	1713	0	1713	0	0	0	0	1648	1317	1561	*	6	53	0	*
	2011	R	Full-text	85	64.3	49	Japan	Asia	31.6	85	0	0	0	54	31	*	71	*	*	87.2	2	5	*	1
Gastric Cancer	2010	R	Abstract	284	*	256	Japan	Asia	*	336	336	0	0	0	0	0	330	*	306	*	*	2	*	1
	2010	R	Full-text	116	67.1	102	Japan	Asia	30	116	116	0	0	0	0	*	116	*	*	73.9	0	3	0	1
	2012	P	Abstract	56	*	*	Japan	Asia	*	56	0	56	0	0	0	0	52	*	37	112.5	2	2	0	*
	2008	P	Full-text	275	*	*	Japan	Asia	*	306	0	306	0	0	0	0	*	*	246	*	2	16	0	7
	2012	R	Abstract	192	68	*	Japan	Asia	23.5	192	192	0	0	0	0	0	189	*	*	85	*	16	0	3
Journal of Gastric Cancer	2014	R	Full-text	816	67	468	Japan	Asia	35	816	0	0	0	520	296	*	771	*	638	78	20	17	1	*
	2011	RCT	Full-text	90	*	42	Japan	Asia	*	90	0	90	0	0	0	0	88	*	*	*	*	2	0	*
	2012	R	Full-text	614	*	358	Japan	Asia	*	635	0	0	0	467	168	*	568	553	*	*	9	16	*	0
	2015	R	Abstract	62	68	27	Japan	Asia	42.8	62	0	0	0	0	62	0	58	*	*	*	9	0	0	0
	2007	R	Full-text	70	63.4	38	Japan	Asia	32.7	71	0	0	0	54	17	0	70	*	68	61.1	8	1	0	0

ogy and	2012	R	Abstract	123	*	*	Japan	Asia	*	136	136	0	0	0	0	0	135	*	112	*	*	5	1	0
Iugoslavica	2007	R	Full-text	70	66.2	47	Japan	Asia	28	70	0	0	0	36	34	*	56	*	56	70.5	1	7	2	0
al of	2008	R	Abstract	361	*	*	Japan	Asia	*	361	0	0	0	0	0	361	355	*	*	*	3	6	1	*
igation	2011	R	Full-text	514	*	365	Japan	Asia	*	586	0	586	0	0	0	*	533	476	*	*	41	18	*	9
ogy	2012	R	Abstract	967	72	678	Japan	Asia	18.5	1123	0	1123	0	0	0	0	1056	943	*	98	56	27	*	*
scopy	2009	R	Full-text	468	*	*	Japan	Asia	30	468	0	0	0	0	0	468	463	*	*	60	7	7	*	*
copy and ional																								
gy Research	2013	R	Full-text	1261	70	1171	Japan	Asia	17	1635	138	1136	0	0	0	361	1620	*	1590	*	47	28	*	0
	2013	R	Full-text	92	66.3	59	Taiwan	Asia	37.2	92	0	0	0	69	23	0	83	82	82	59	0	11	0	0
	2013	R	Abstract	214	69	174	Japan	Asia	20.4	256	256	0	0	0	0	0	247	*	216	*	0	17	*	*
oenterology	2015	R	Full-text	307	69	253	Japan	Asia	18	368	368	0	0	0	0	0	356	272	311	90	0	19	0	5
	2011	R	Full-text	59	65.3	50	Japan	Asia	*	79	79	0	0	0	0	*	77	*	*	49.7	1	6	*	0
copy	2011	P	Full-text	196	*	137	Japan	Asia	*	202	0	0	0	136	66	*	185	176	*	*	1	5	0	0
	2006	R	Full-text	120	69	84	Japan	Asia	*	120	0	120	0	0	0	*	110	*	105	*	0	5	0	*
al Journal	2014	P	Abstract	73	*	*	China	Asia	*	73	3	70	0	0	0	*	68	61	*	85	3	0	0	1
al of																								
gy	2011	R	Full-text	120	51.5	72	China	Asia	18.8	120	0	120	0	0	0	0	108	112	108	64.6	6	3	3	2
urnal of	2013	R	Full-text	135	64.5	67	China	Asia	30	137	0	0	0	60	77	*	135	124	130	52.3	5	3	1	1

Journal of Economic Surveys	Table 1. The number of articles published in the Journal of Economic Surveys, by year, type of article, and region																							
	Year		Type of article		Number of articles		Region		Mean number of articles per year		Standard deviation		Coefficient of variation		Skewness		Kurtosis		Jarque-Bera test		p-value		Normality test	
Journal of Economic Surveys	2012		R		Abstract		China		33.9		151		0		0		0		0		0		0	
	2013		R		Full-text		Japan		20		53		53		0		0		0		0		0	
Journal of Economic Surveys	2013		R		Abstract		Japan		*		106		106		0		0		0		0		0	
	2007		P		Full-text		Japan		19.1		54		0		54		0		0		0		0	
Journal of Economic Surveys	2014		R		Full-text		Japan		32.5		119		0		0		88		31		0		0	
	2009		P		Full-text		Japan		*		90		0		90		0		0		0		0	
Journal of Economic Surveys	2011		R		Full-text		Japan		21.3		71		71		0		0		0		0		0	
	2015		R		Abstract		Korea		23.46		56		0		0		0		41		15		0	
Journal of Economic Surveys	2014		R		Full-text		Korea		15.72		1443		0		1443		0		0		0		0	
	2009		R		Abstract		Japan		30.4		105		0		0		0		0		105		93	
Journal of Economic Surveys	2010		R		Full-text		Japan		*		118		0		0		0		74		44		0	
	2010		R		Full-text		Japan		*		250		0		0		0		171		79		0	
Journal of Economic Surveys	2015		R		Full-text		Japan		17.2		144		0		144		0		0		0		0	
	2013		R		Abstract		China		*		255		0		0		0		0		0		0	
Journal of Economic Surveys	2012		R		Abstract		China		22.9		83		0		0		0		0		83		0	

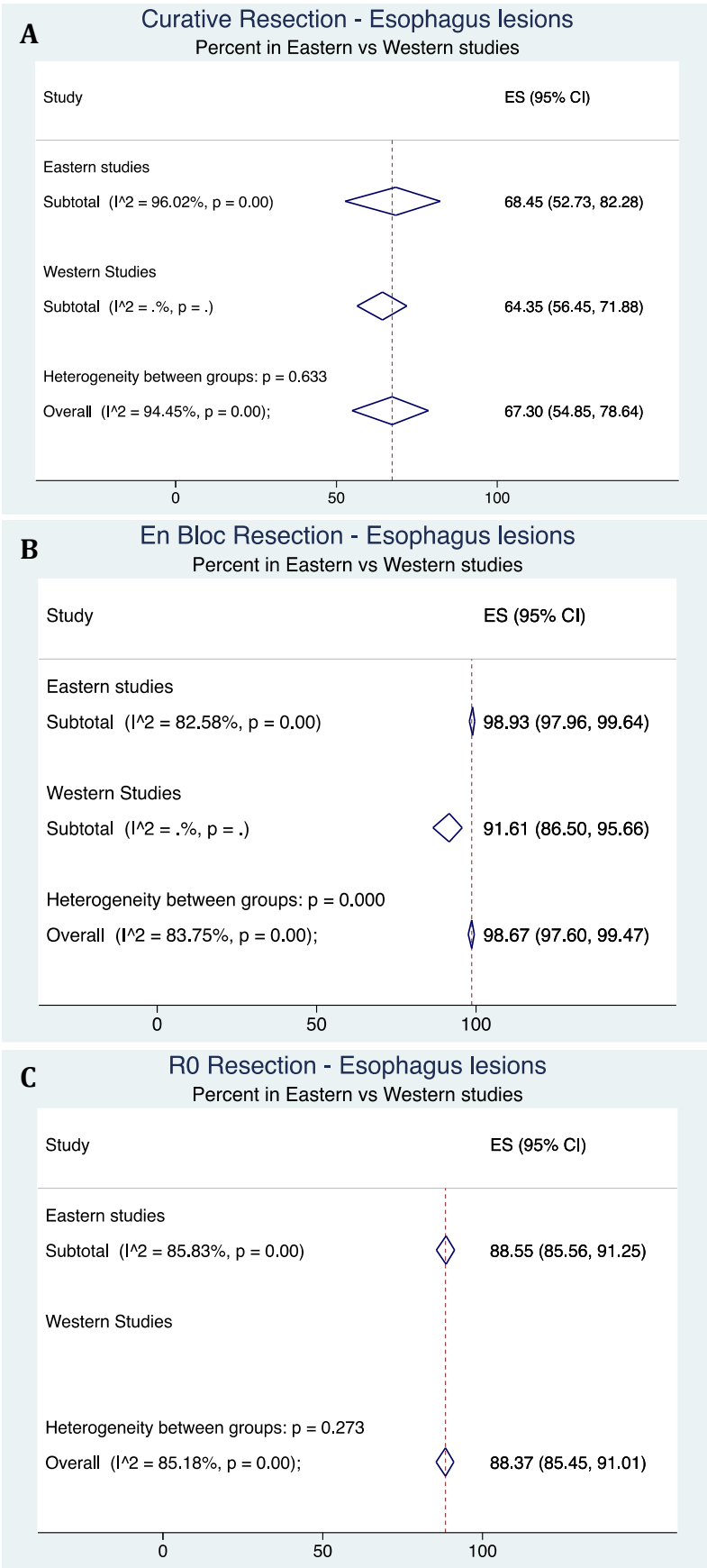
copy and																								
copy	2009	R	Full-text	73	64.2	39	China	Asia	32.6	74	0	0	0	32	42	*	69	*	66	110	1	6	1	0

\*: Missing data; R: Retrospective; P: Prospective; RCT: Randomized controlled trial; E: Esophagus; S: Stomach; D: Duodenum ; C : Colon ; R: Rectum; C-R: Colo-rectum.

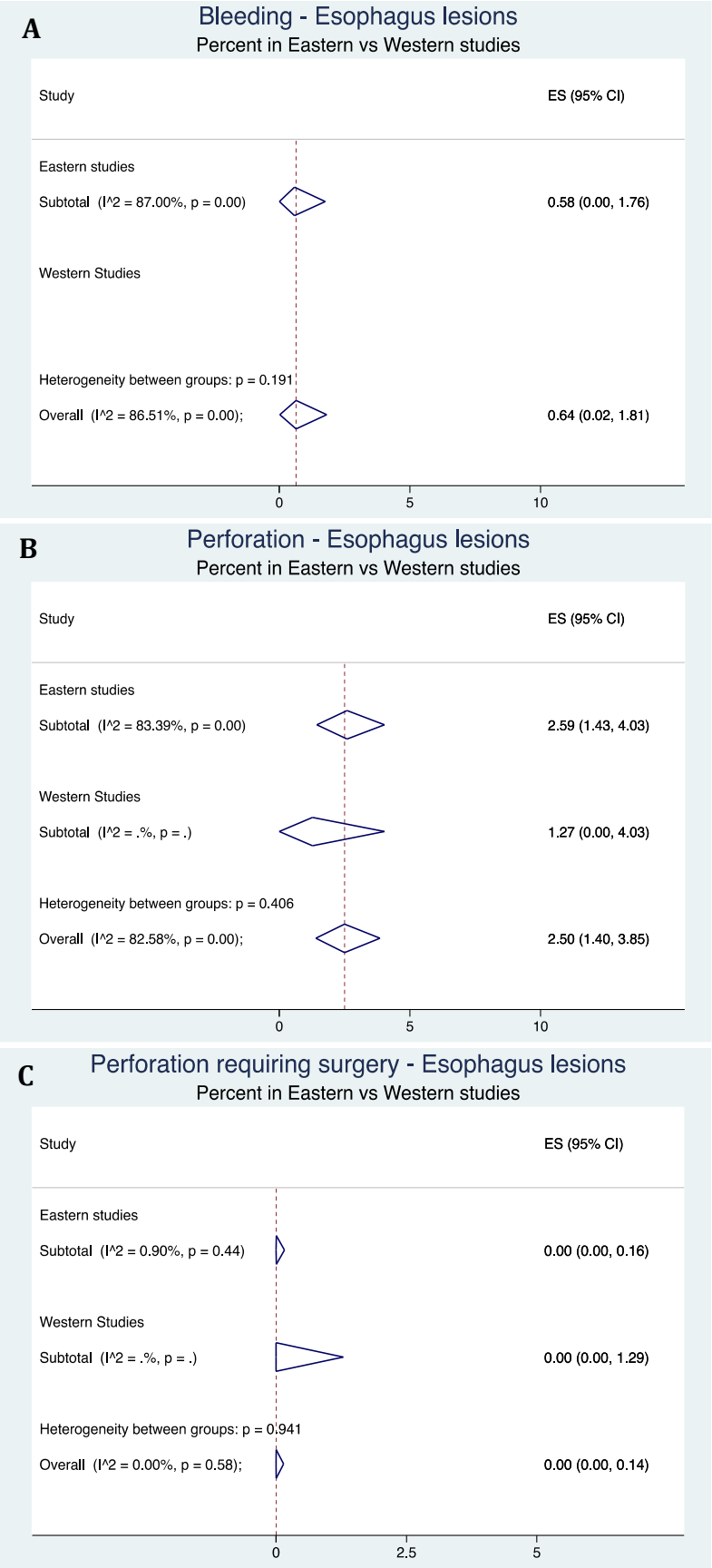
Supplementary Table 2 Characteristics of the included studies and patients per country

	Age (yr) <sup>1</sup>	Number of patient (n)	Number of lesions (n)	E (n)	S (n)	D (n)	C-R (n)	Lesion Diameter (mm)*	Time (min)*	Number of studies (n)	RCT (n)	Prospective (n)	Retrospective (n)
Eastern Countries	66.4	82 183	87 296	5 276	59 173	8	22 839	25.7	77	216	7	53	156
China		2 786	2 860	700	1 149	0	1011			17	0	4	13
Japan		56 851	61 029	4 199	38 542	8	18 280			141	4	30	107
Korea		22 319	23 176	377	19 343	0	3 456			55	3	19	33
Taiwan		227	231	0	139	0	92			3	0	0	3
Western Countries	66	2 135	2 216	321	793	7	1 095	34.1	110	23	0	11	13
Belgium		75	75	75	0	0	0			1	0	0	1
Brazil		76	78	16	62	0	0			1	0	1	0
Colombia		53	54	0	54	0	0			1	0	1	0
France		188	188	27	75	1	85			1	0	0	1
Germany		679	683	186	91	0	406			7	0	4	3
Italy		227	227	0	0	0	227			3	0	3	0
Poland		70	70	0	0	0	70			1	0	0	1
Portugal		493	567	10	487	3	67			4	0	2	2
Turkey		60	60	7	24	3	26			1	0	0	1
USA		214	214	0	0	0	214			3	0	0	3

<sup>1</sup>Weighted average. E: Esophagus; S: Stomach; D: Duodenum; C-R: Colo-Rectum; RCT: Randomized controlled trial.

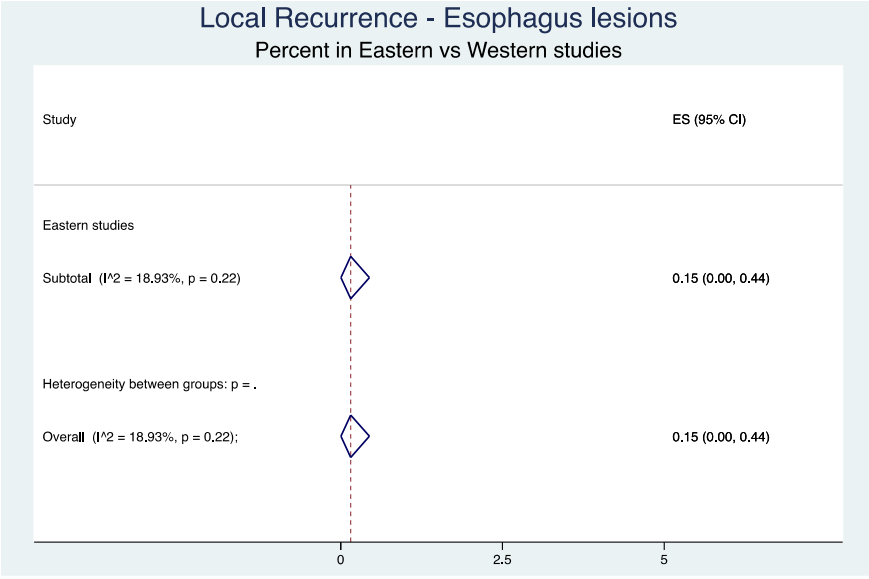


**Supplementary Figure 1 Stratification by organ: esophageal lesions.** Forest plot for curative resection (A), *en bloc* resection (B), R0 resection (C).

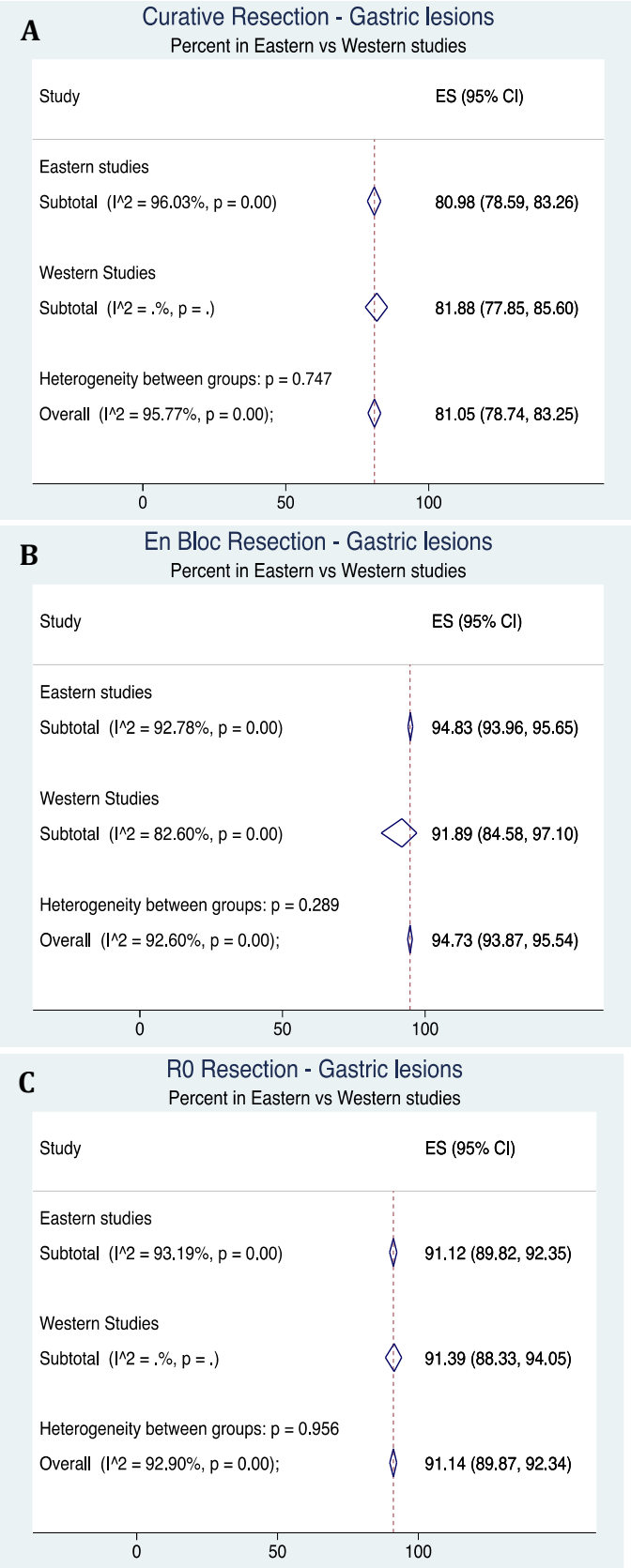


**Supplementary Figure 2 Stratification by organ: esophageal lesions.** Forest plot for bleeding (A), perforation (B), perforation requiring surgery (C).

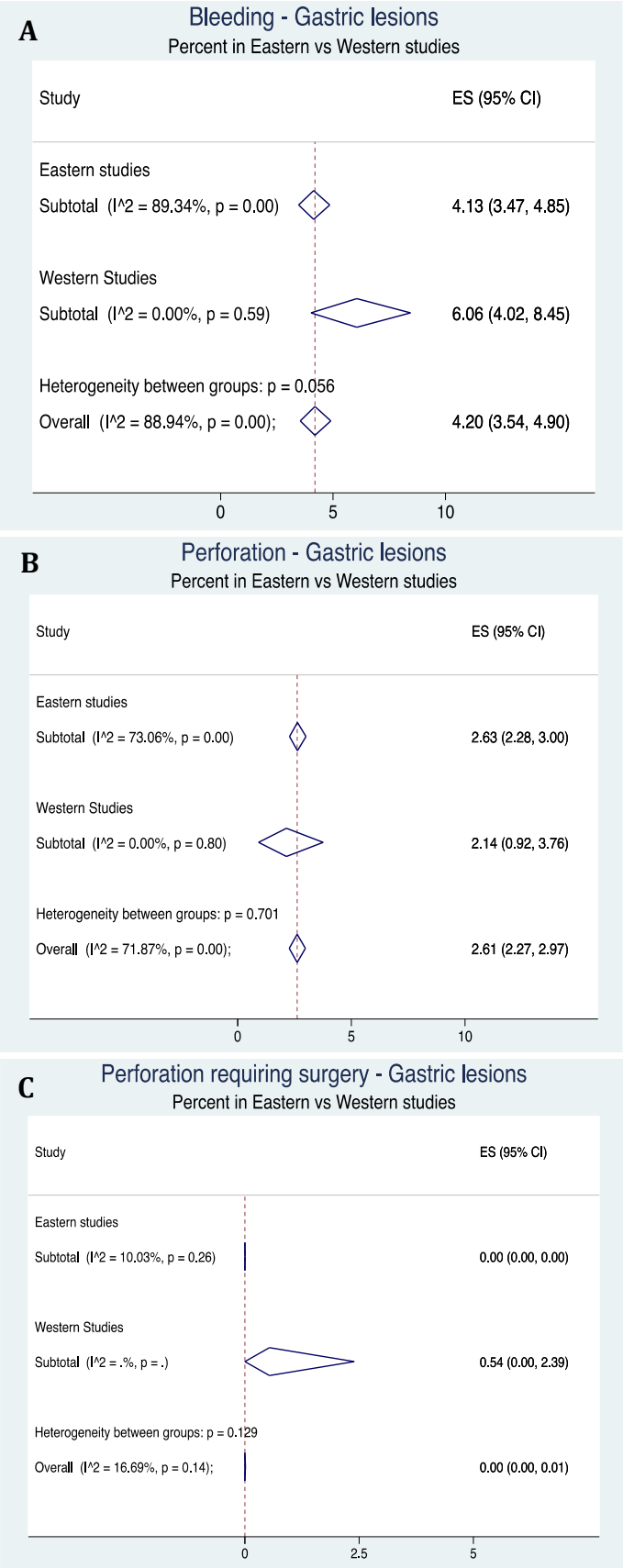




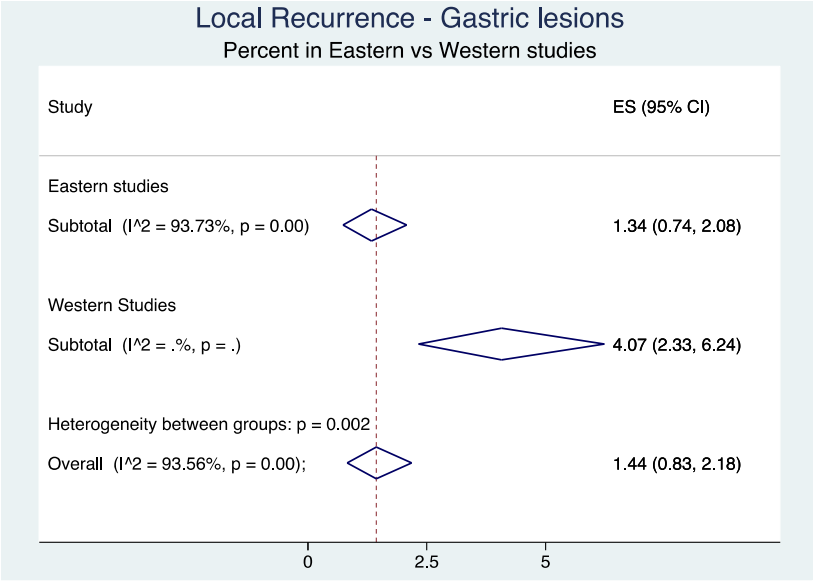
**Supplementary Figure 3 Stratification by organ: esophageal lesions.** Forest plot for local recurrence.



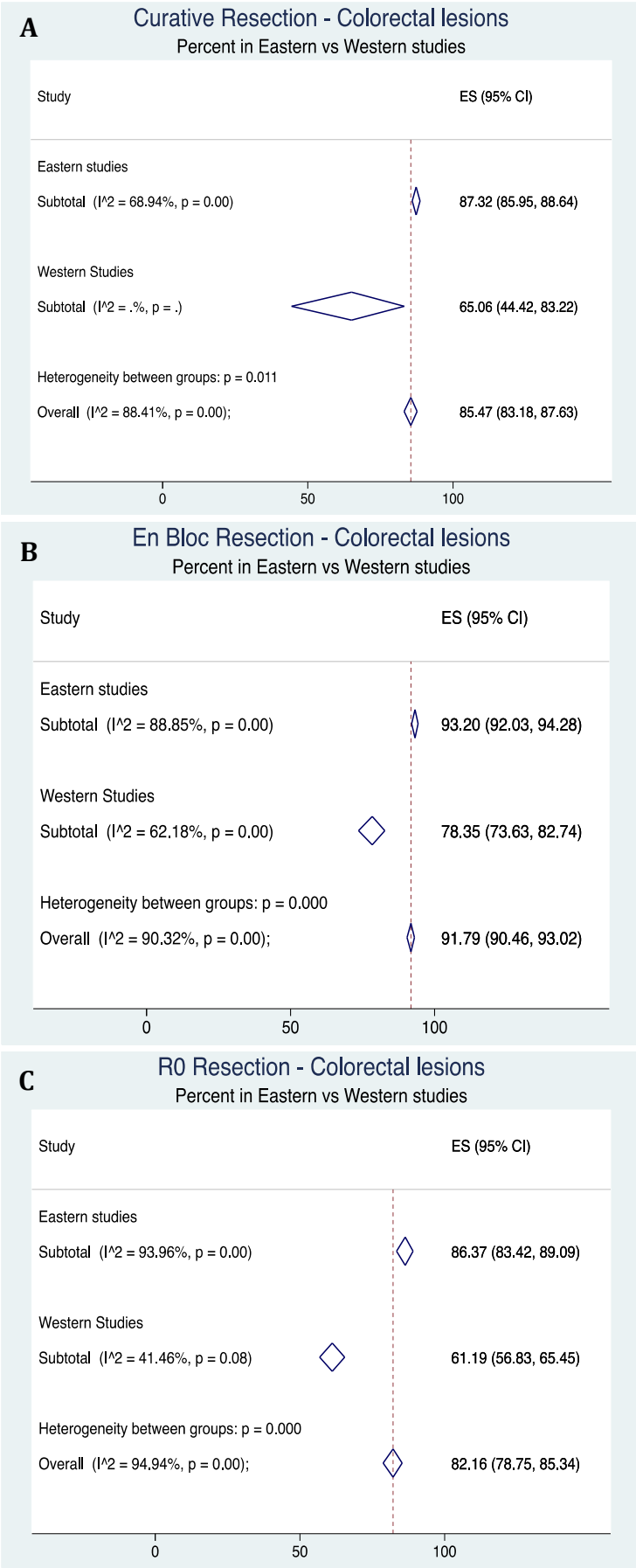
**Supplementary Figure 4 Stratification by organ: gastric lesions.** Forest plot for curative resection (A), *en bloc* resection (B), R0 resection (C).



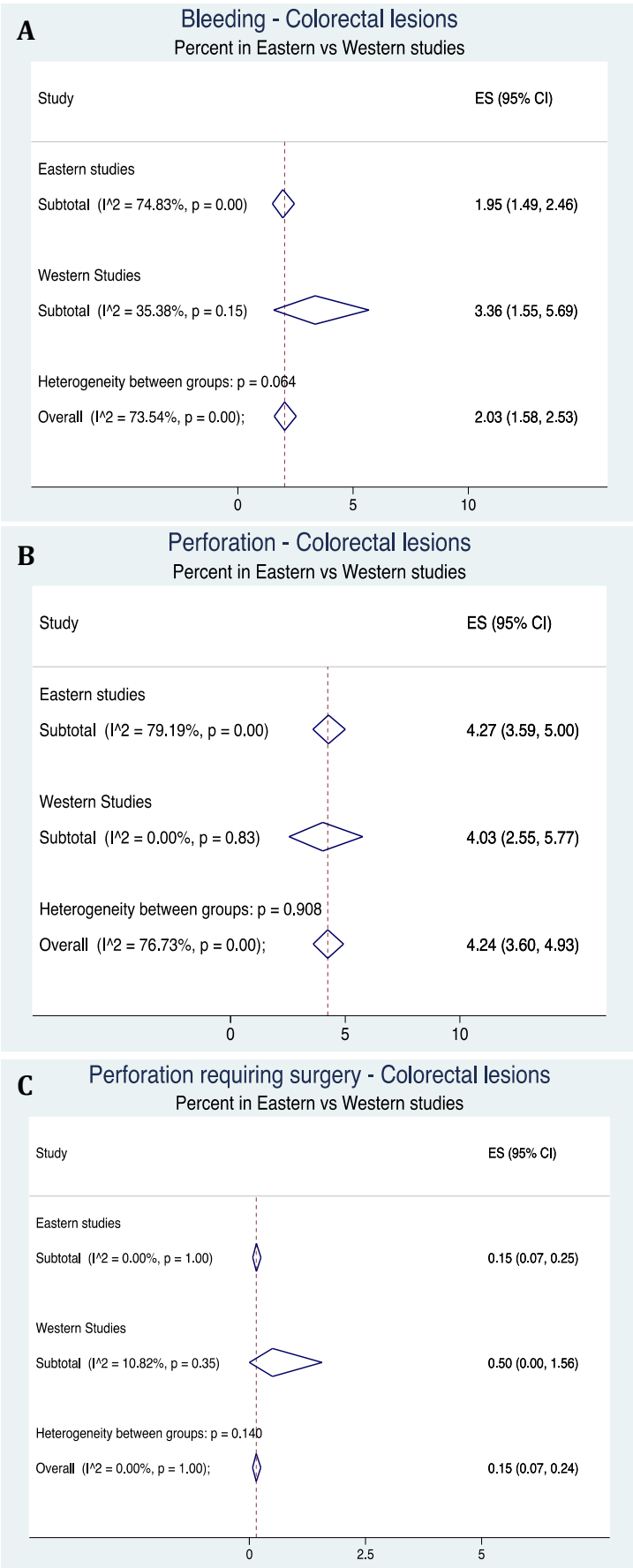
**Supplementary Figure 5 Stratification by organ: gastric lesions. Forest plot for bleeding (A), perforation (B), perforation requiring surgery (C).**



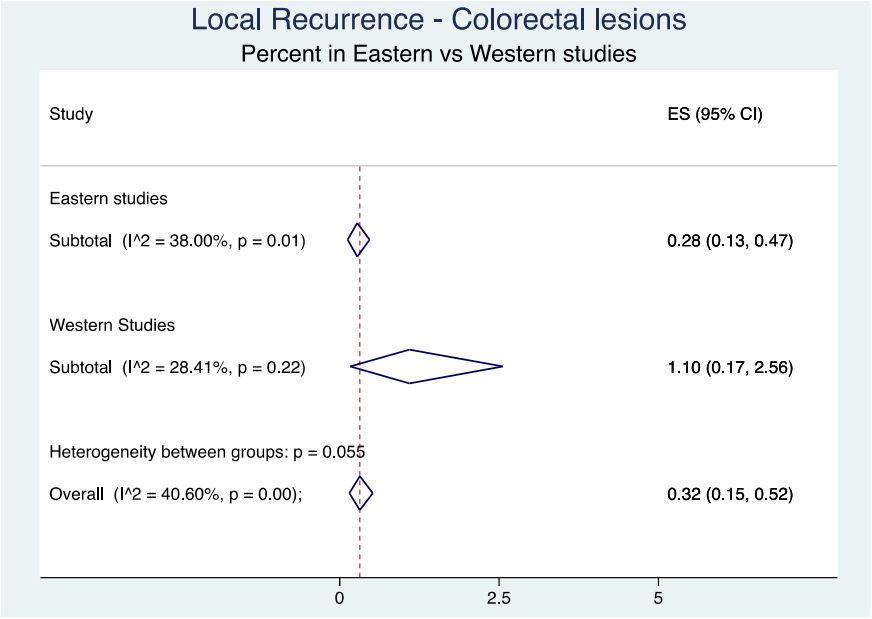
**Supplementary Figure 6 Stratification by organ: gastric lesions.** Forest plot for local recurrence.



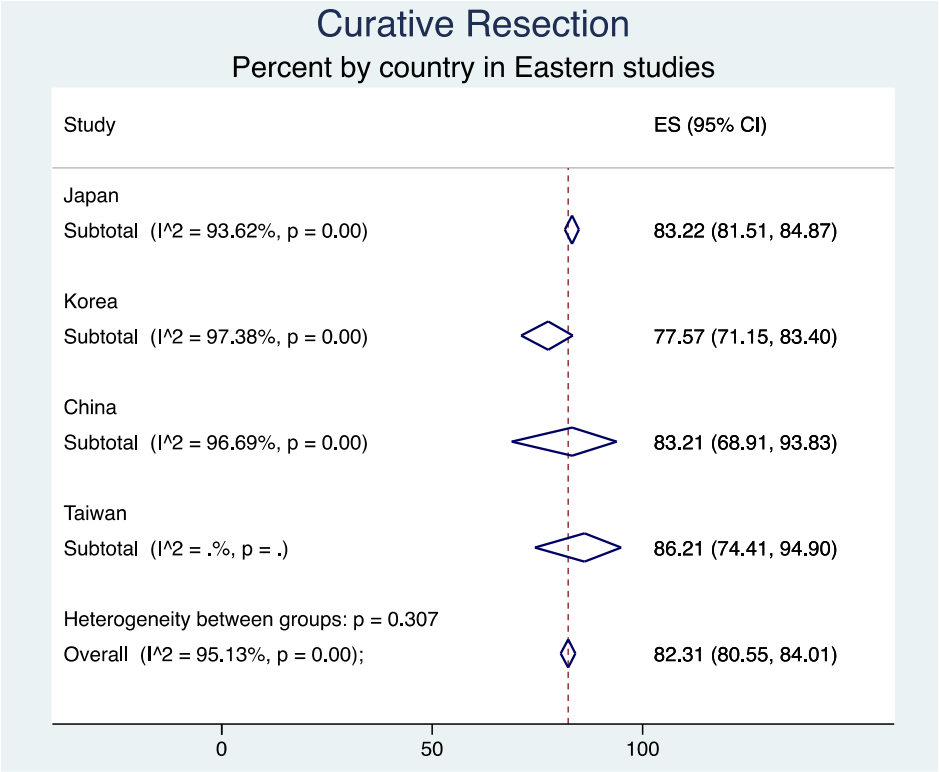
**Supplementary Figure 7 Stratification by organ: colorectal lesions.** Forest plot for curative resection (A), *en bloc* resection (B), R0 resection (C).



**Supplementary Figure 8 Stratification by organ: colorectal lesions.** Forest plot for bleeding (A), perforation (B), perforation requiring surgery (C).

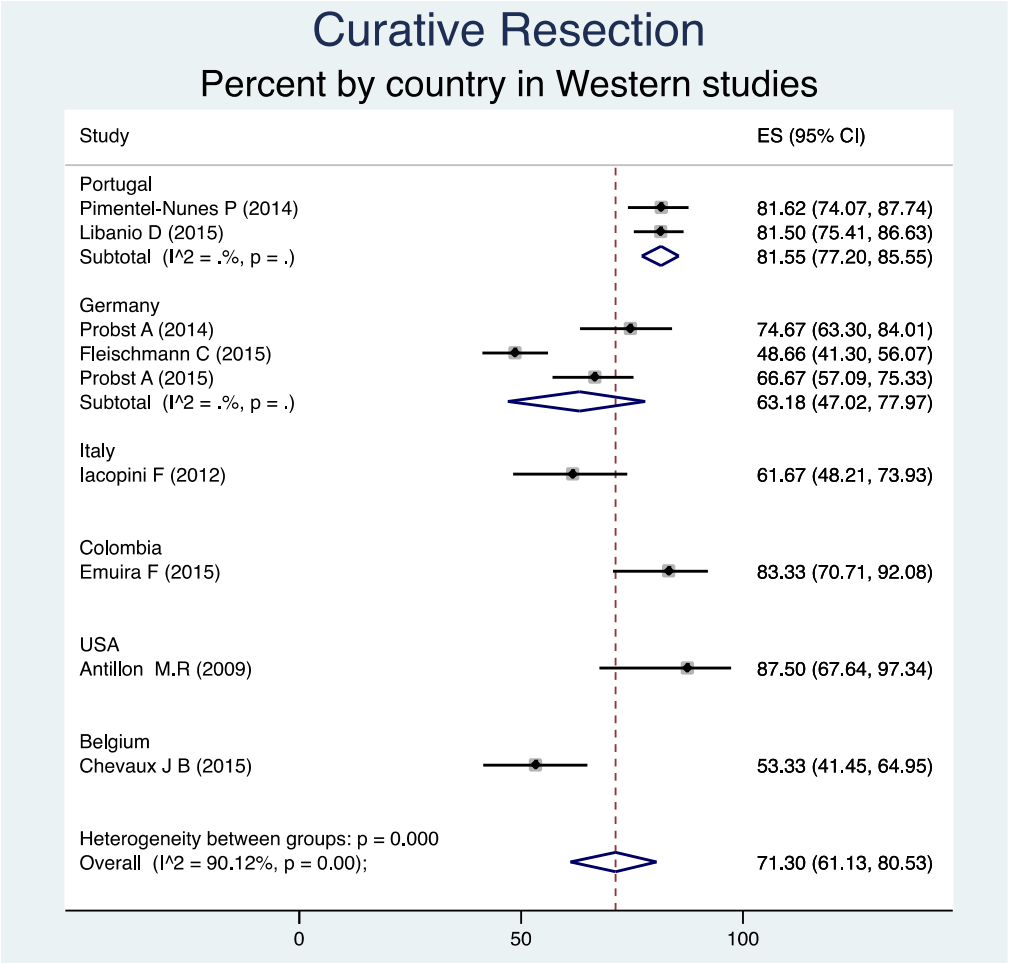


**Supplementary Figure 9 Stratification by organ: colorectal lesions.** Forest plot for local recurrence.

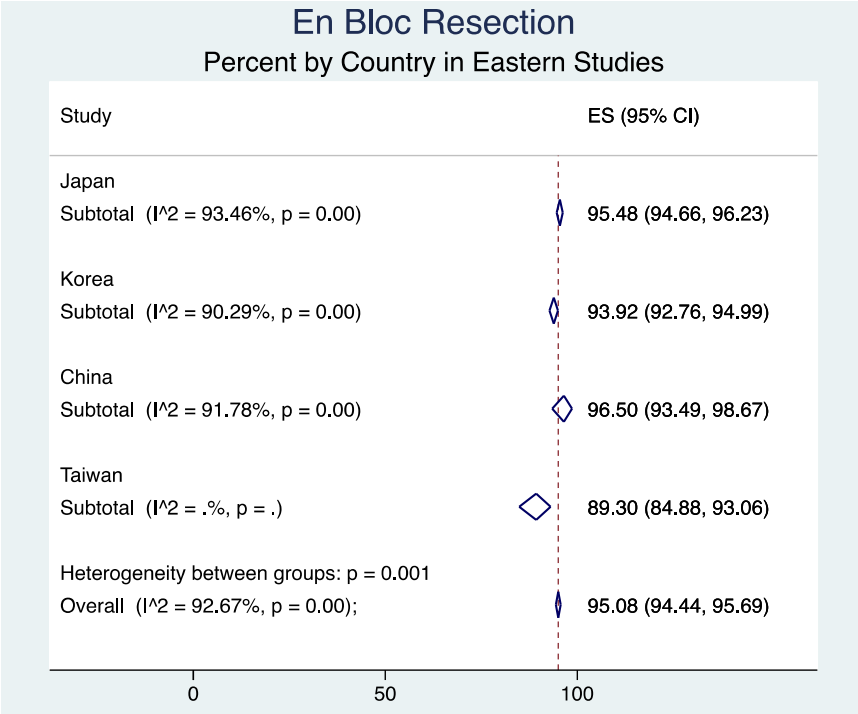


**Supplementary Figure 10 Forest plot for curative resection.** Stratification by Eastern countries.





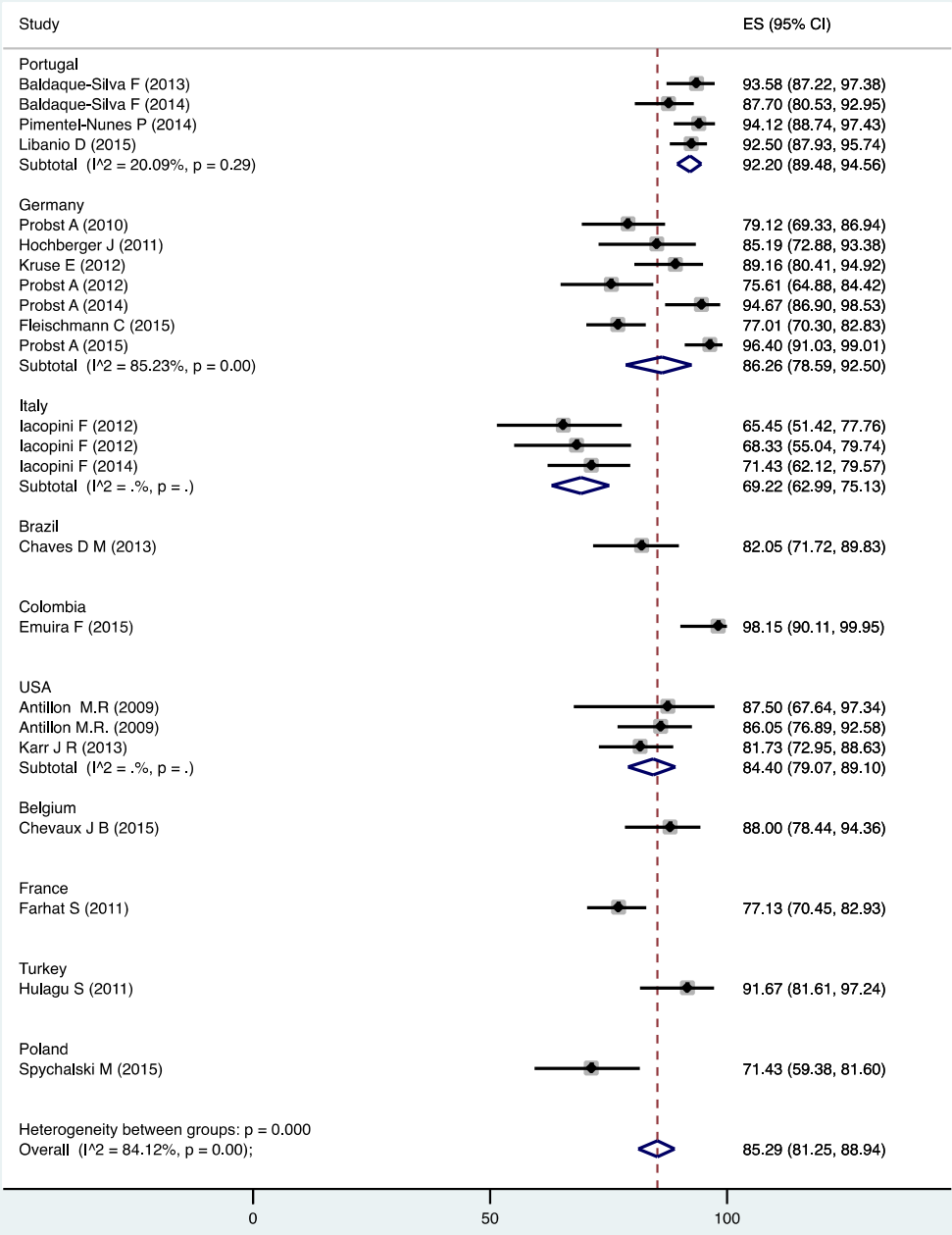
Supplementary Figure 11 Forest plot for curative resection. Stratification by Western countries.



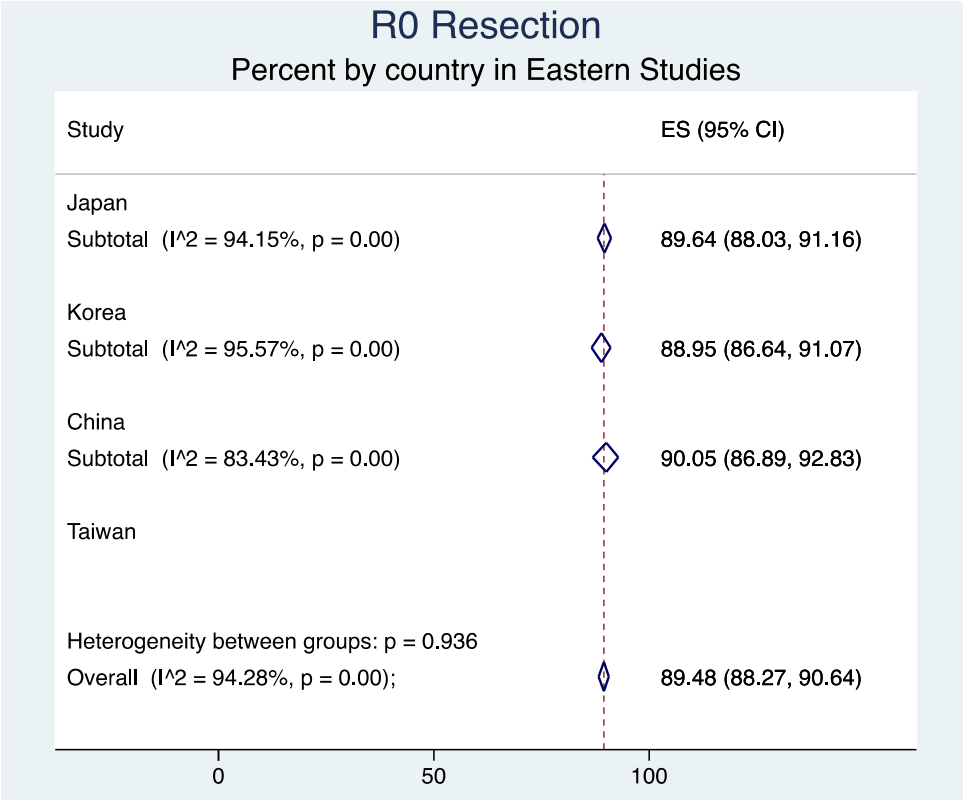
**Supplementary Figure 12 Forest plot for *en bloc* resection.** Stratification by Eastern countries.

# En Bloc Resection

## Percent by Country in Western Studies



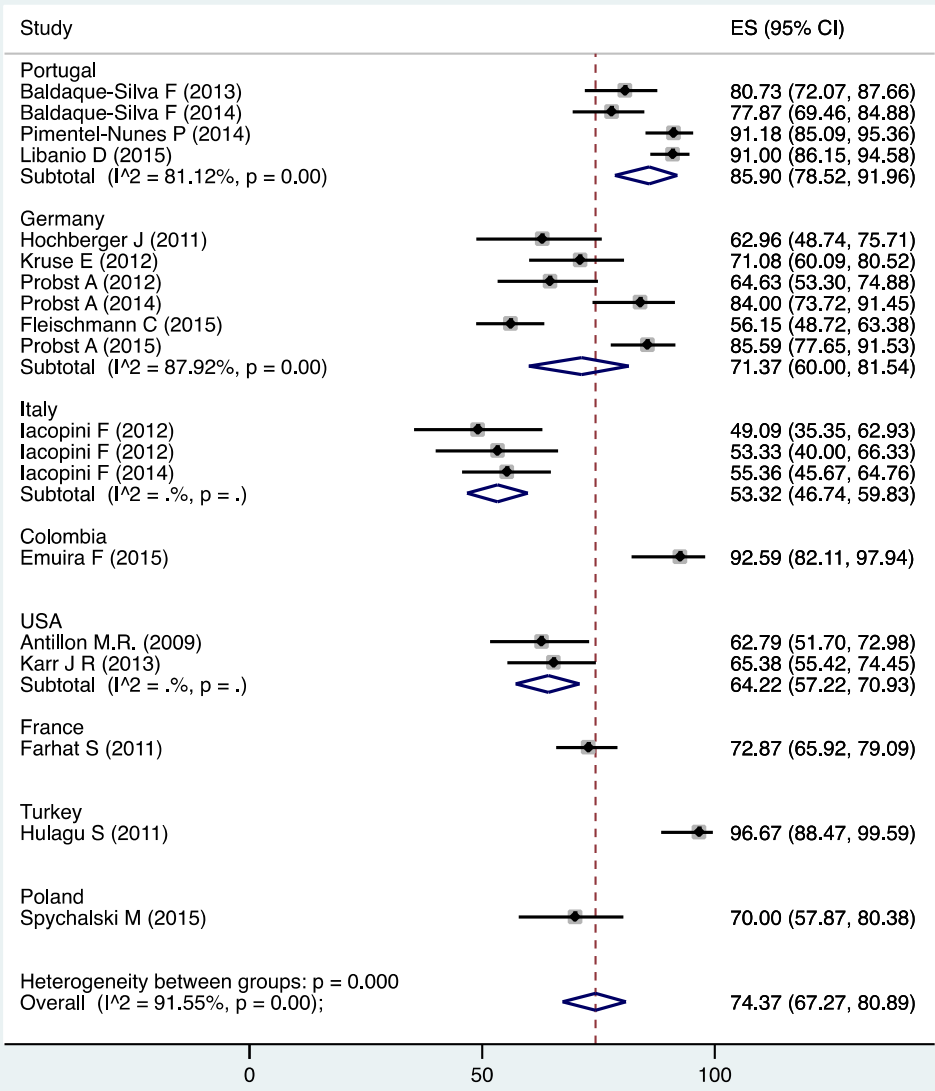
Supplementary Figure 13 Forest plot for *en bloc* resection. Stratification by Western countries.



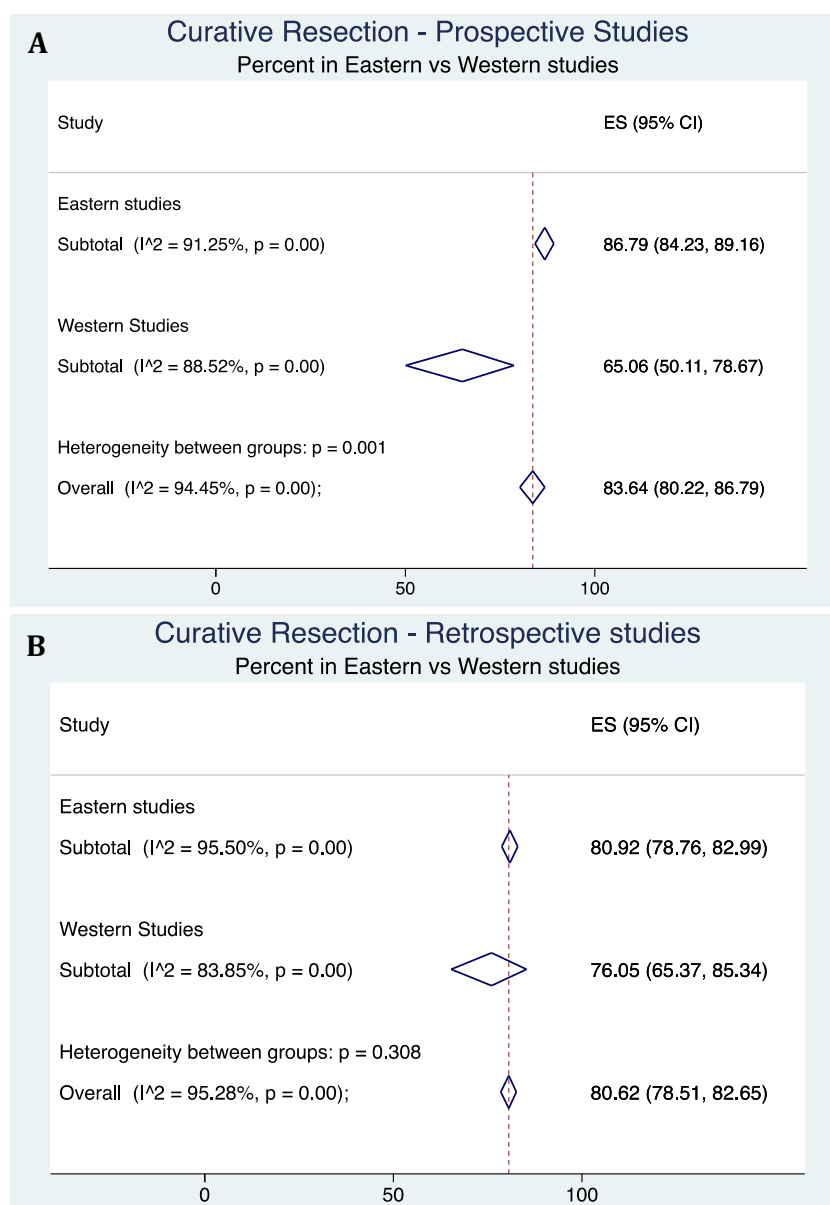
**Supplementary Figure 14 Forest plot for R0 resection.** Stratification by Eastern countries.

R0 Resection

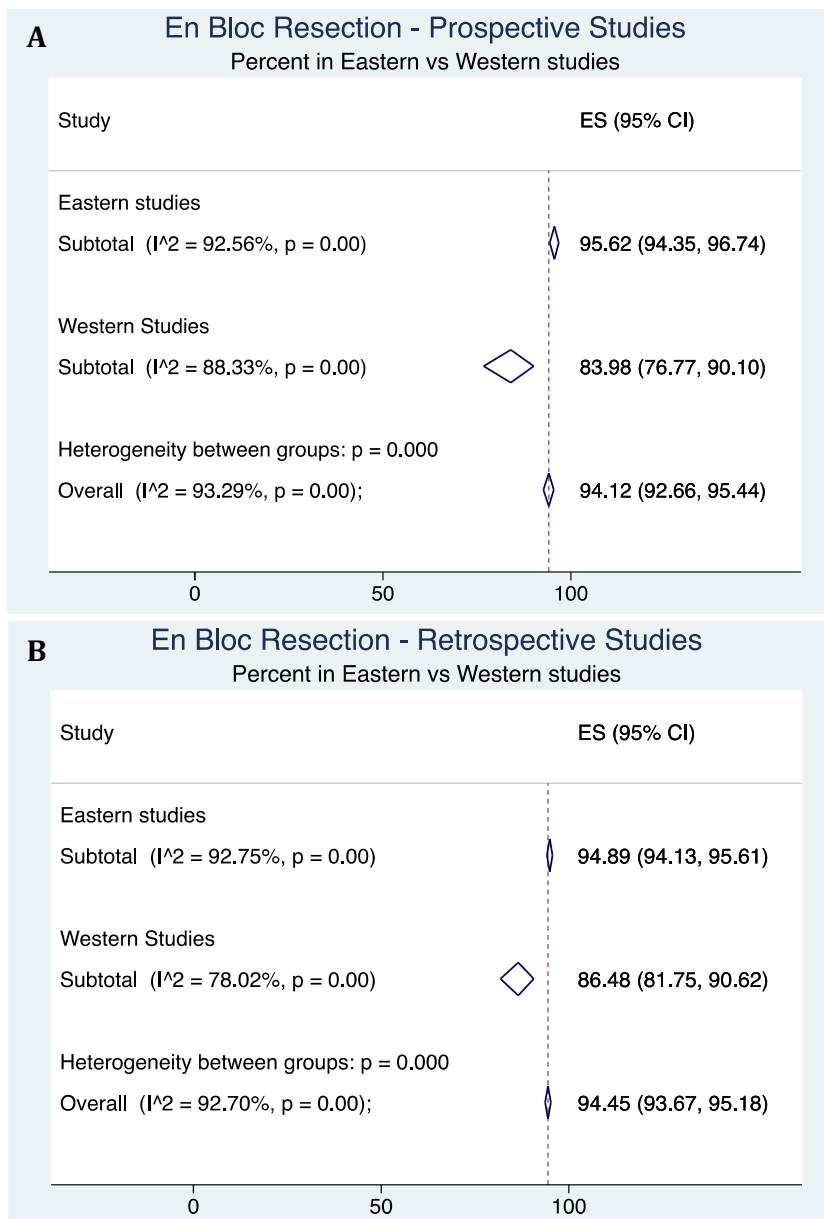
Percent by country in Western Studies



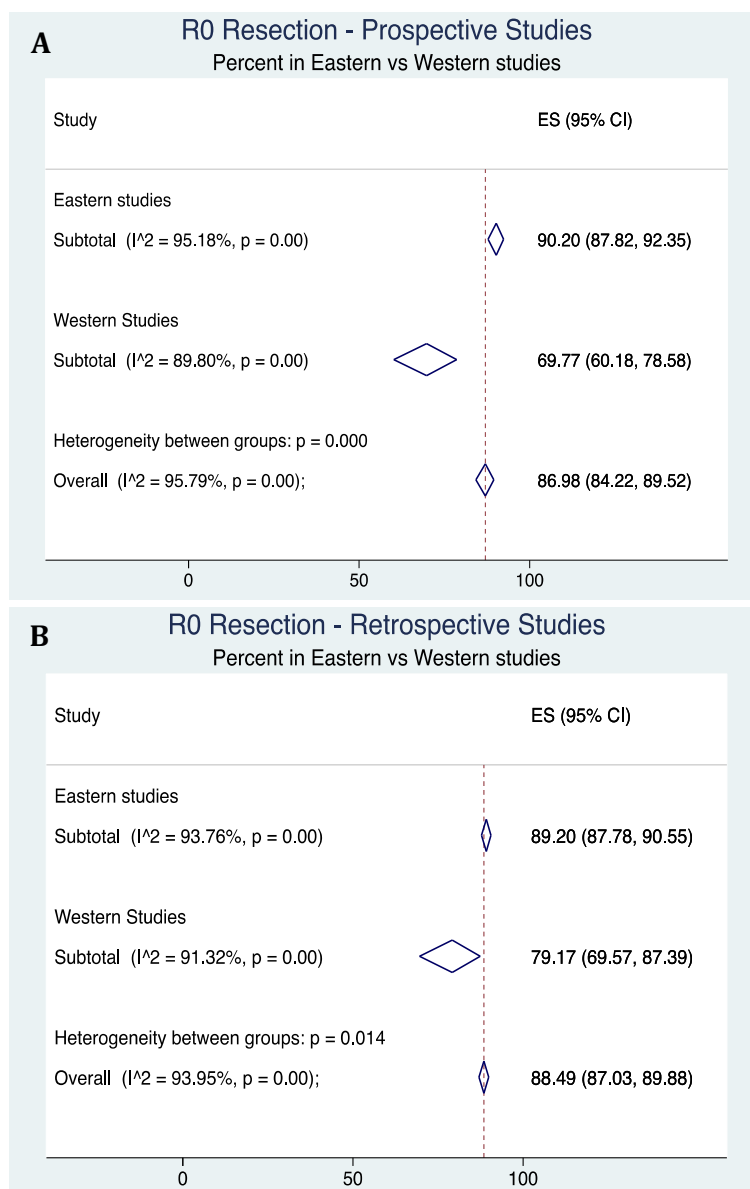
Supplementary Figure 15 Forest plot for R0 resection. Stratification by Western countries.



**Supplementary Figure 16 Forest plot for curative resection.** Stratification by study design: prospective studies (A), retrospective studies (B).

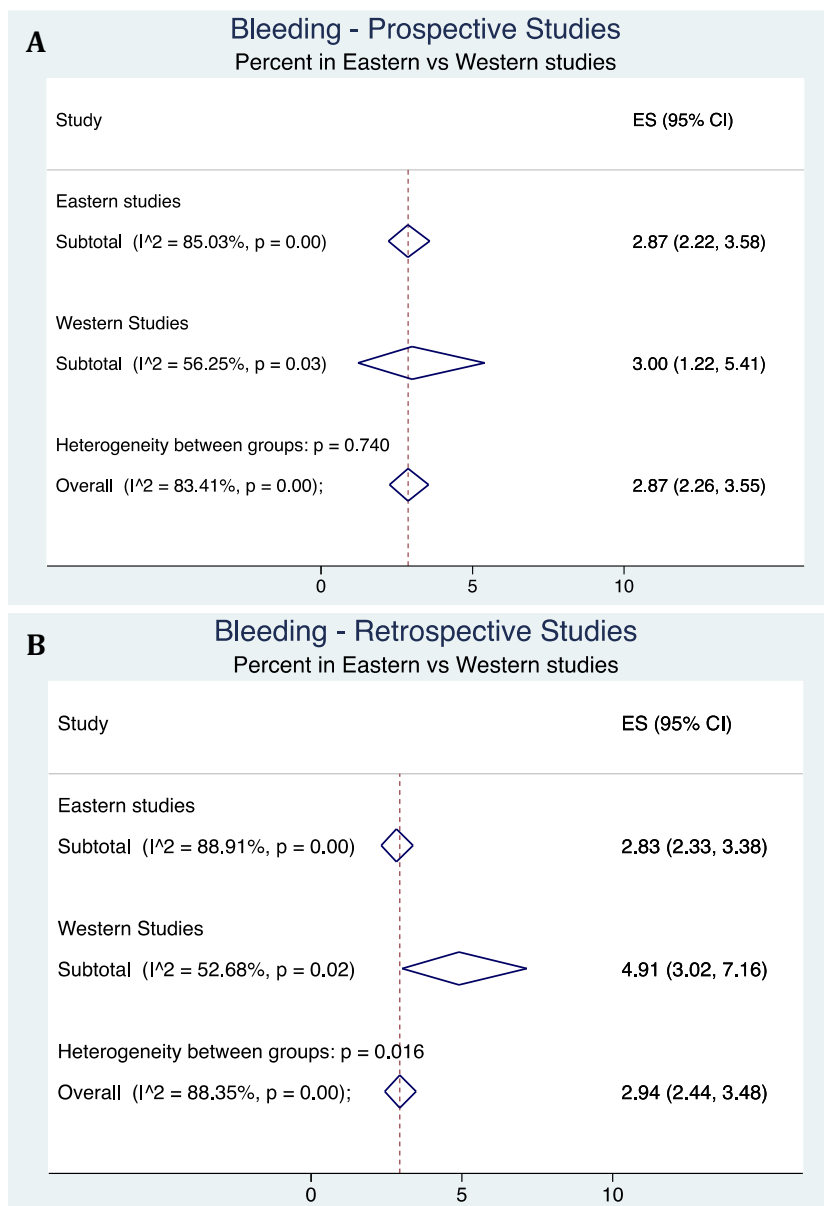


**Supplementary Figure 17 Forest plot for *en bloc* resection.** Stratification by study design: prospective studies (A), retrospective studies (B).

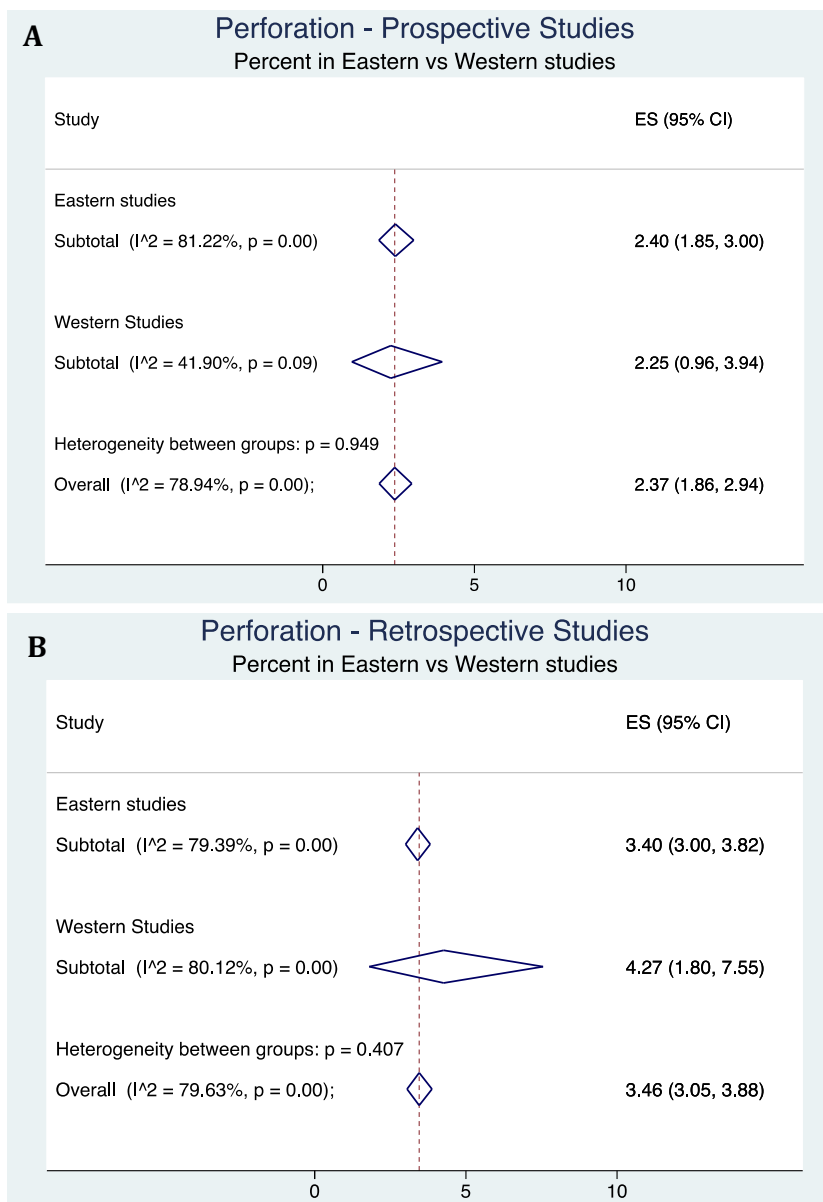


**Supplementary Figure 18 Forest plot for R0 resection.** Stratification by study design: prospective studies (A), retrospective studies (B).

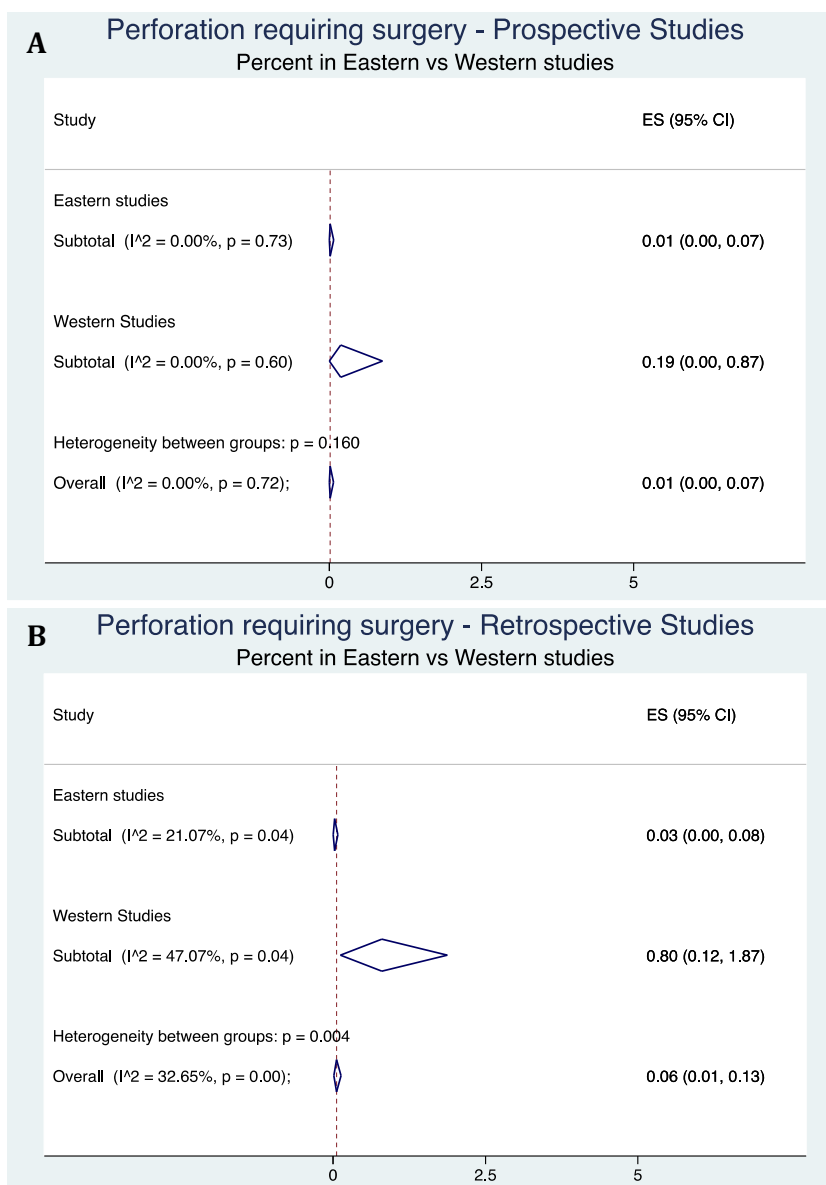




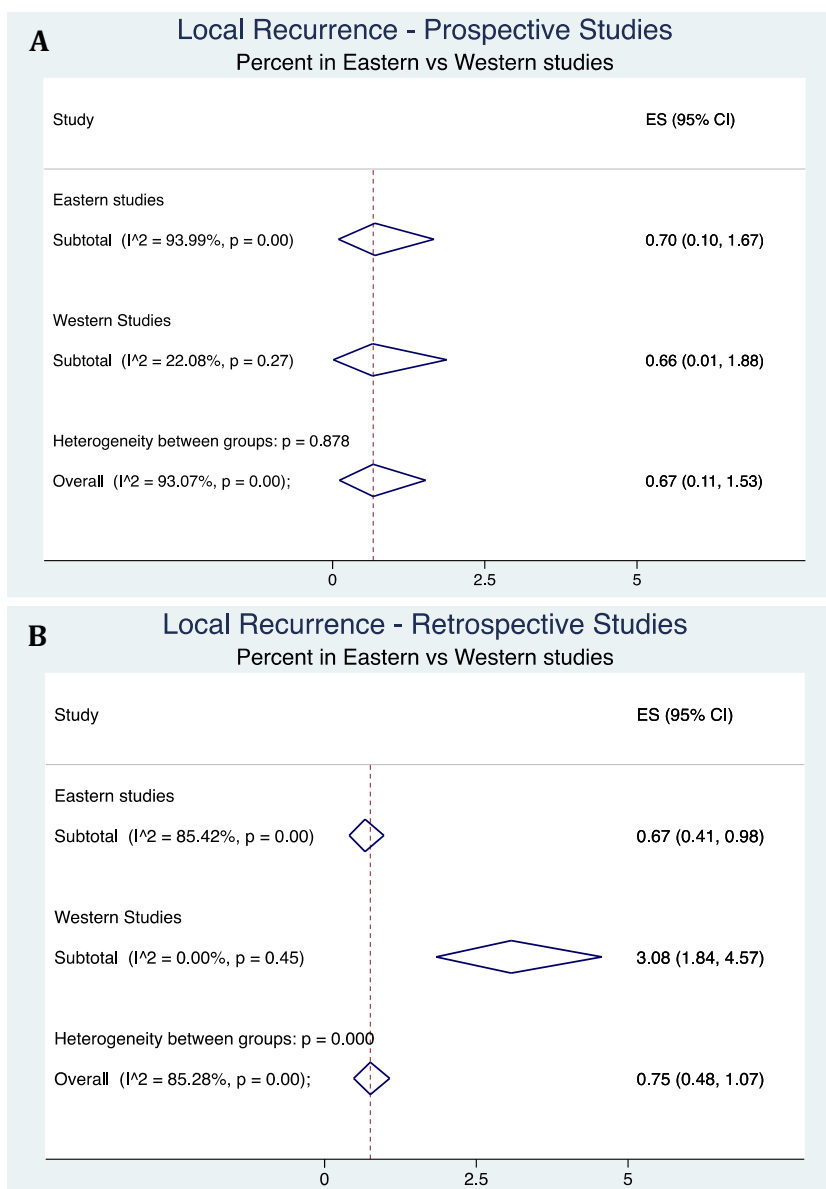
**Supplementary Figure 19 Forest plot for bleedin.** Stratification by study design: prospective studies (A), retrospective studies (B).



**Supplementary Figure 20 Forest plot for perforation.** Stratification by study design: prospective studies (A), retrospective studies (B).



**Supplementary Figure 21 Forest plot perforation requiring surgery.** Stratification by study design: prospective studies (A), retrospective studies (B).



**Supplementary Figure 22 Forest plot for local recurrence.** Stratification by study design: prospective studies (A), retrospective studies (B).