

World Journal of *Gastroenterology*

World J Gastroenterol 2018 July 7; 24(25): 2647-2784



**REVIEW**

- 2647 Role of microRNAs in the main molecular pathways of hepatocellular carcinoma
Vasuri F, Visani M, Acquaviva G, Brand T, Fiorentino M, Pession A, Tallini G, D'Errico A, de Biase D
- 2661 Apoptosis and non-alcoholic fatty liver diseases
Kanda T, Matsuo S, Yamazaki M, Shibata T, Nirei K, Takahashi H, Kaneko T, Fujisawa M, Higuchi T, Nakamura H, Matsumoto N, Yamagami H, Ogawa M, Imazu H, Kuroda K, Moriyama M
- 2673 Diets, functional foods, and nutraceuticals as alternative therapies for inflammatory bowel disease: Present status and future trends
Mijan MA, Lim BO

MINIREVIEWS

- 2686 Advances in immuno-oncology biomarkers for gastroesophageal cancer: Programmed death ligand 1, microsatellite instability, and beyond
Lin EM, Gong J, Klempner SJ, Chao J
- 2698 Minimally invasive donor hepatectomy, are we ready for prime time?
Au KP, Chok KS

ORIGINAL ARTICLE**Basic Study**

- 2710 Intra-individual comparison of therapeutic responses to vascular disrupting agent CA4P between rodent primary and secondary liver cancers
Liu YW, De Keyser F, Feng YB, Chen F, Song SL, Swinnen J, Bormans G, Oyen R, Huang G, Ni YC

Retrospective Study

- 2722 Gastric cancer in Alaska Native people: A cancer health disparity
Martinson HA, Shelby NJ, Alberts SR, Olnes MJ

Observational Study

- 2733 Transforming growth factor- β and peripheral regulatory cells are negatively correlated with the overall survival of hepatocellular carcinoma
An Y, Gao S, Zhao WC, Qiu BA, Xia NX, Zhang PJ, Fan ZP

SYSTEMATIC REVIEWS

- 2741 Current global trends in the incidence of pediatric-onset inflammatory bowel disease
Sýkora J, Pomahačová R, Kreslová M, Cvalínová D, Štych P, Schwarz J

META-ANALYSIS

- 2764 Systematic review and meta-analysis on the association of tuberculosis in Crohn's disease patients treated with tumor necrosis factor- α inhibitors (Anti-TNF α)
Cao BL, Qasem A, Sharp RC, Abdelli LS, Naser SA

CASE REPORT

- 2776 Liposarcoma of the stomach: Report of two cases and review of the literature
Kang WZ, Xue LY, Wang GQ, Ma FH, Feng XL, Guo L, Li Y, Li WK, Tian YT

ABOUT COVER

Editorial board member of *World Journal of Gastroenterology*, Dar-In Tai, MD, PhD, Attending Doctor, Chief Doctor, Professor, Department of Gastroenterology and Hepatology, Chang Gung Memorial Hospital, Taipei 105, Taiwan

AIMS AND SCOPE

World Journal of Gastroenterology (*World J Gastroenterol*, *WJG*, print ISSN 1007-9327, online ISSN 2219-2840, DOI: 10.3748) is a peer-reviewed open access journal. *WJG* was established on October 1, 1995. It is published weekly on the 7th, 14th, 21st, and 28th each month. The *WJG* Editorial Board consists of 642 experts in gastroenterology and hepatology from 59 countries.

The primary task of *WJG* is to rapidly publish high-quality original articles, reviews, and commentaries in the fields of gastroenterology, hepatology, gastrointestinal endoscopy, gastrointestinal surgery, hepatobiliary surgery, gastrointestinal oncology, gastrointestinal radiation oncology, gastrointestinal imaging, gastrointestinal interventional therapy, gastrointestinal infectious diseases, gastrointestinal pharmacology, gastrointestinal pathophysiology, gastrointestinal pathology, evidence-based medicine in gastroenterology, pancreatology, gastrointestinal laboratory medicine, gastrointestinal molecular biology, gastrointestinal immunology, gastrointestinal microbiology, gastrointestinal genetics, gastrointestinal translational medicine, gastrointestinal diagnostics, and gastrointestinal therapeutics. *WJG* is dedicated to become an influential and prestigious journal in gastroenterology and hepatology, to promote the development of above disciplines, and to improve the diagnostic and therapeutic skill and expertise of clinicians.

INDEXING/ABSTRACTING

World Journal of Gastroenterology (*WJG*) is now indexed in Current Contents[®]/Clinical Medicine, Science Citation Index Expanded (also known as SciSearch[®]), Journal Citation Reports[®], Index Medicus, MEDLINE, PubMed, PubMed Central and Directory of Open Access Journals. The 2018 edition of Journal Citation Reports[®] cites the 2017 impact factor for *WJG* as 3.300 (5-year impact factor: 3.387), ranking *WJG* as 35th among 80 journals in gastroenterology and hepatology (quartile in category Q2).

EDITORS FOR THIS ISSUE

Responsible Assistant Editor: *Xiang Li*
Responsible Electronic Editor: *Yan Huang*
Proofing Editor-in-Chief: *Lian-Sheng Ma*

Responsible Science Editor: *Xue-Jiao Wang*
Proofing Editorial Office Director: *Ze-Mao Gong*

NAME OF JOURNAL
World Journal of Gastroenterology

ISSN
ISSN 1007-9327 (print)
ISSN 2219-2840 (online)

LAUNCH DATE
October 1, 1995

FREQUENCY
Weekly

EDITORS-IN-CHIEF
Damian Garcia-Olmo, MD, PhD, Doctor, Professor, Surgeon, Department of Surgery, Universidad Autonoma de Madrid; Department of General Surgery, Fundacion Jimenez Diaz University Hospital, Madrid 28040, Spain

Stephen C Strom, PhD, Professor, Department of Laboratory Medicine, Division of Pathology, Karolinska Institutet, Stockholm 141-86, Sweden

Andrzej S Tarnawski, MD, PhD, DSc (Med), Professor of Medicine, Chief Gastroenterology, VA Long Beach Health Care System, University of California, Irvine, CA, 5901 E. Seventh Str., Long Beach,

CA 90822, United States

EDITORIAL BOARD MEMBERS
All editorial board members resources online at <http://www.wjgnet.com/1007-9327/editorialboard.htm>

EDITORIAL OFFICE
Ze-Mao Gong, Director
World Journal of Gastroenterology
Baishideng Publishing Group Inc
7901 Stoneridge Drive, Suite 501,
Pleasanton, CA 94588, USA
Telephone: +1-925-2238242
Fax: +1-925-2238243
E-mail: editorialoffice@wjgnet.com
Help Desk: <http://www.f6publishing.com/helpdesk>
<http://www.wjgnet.com>

PUBLISHER
Baishideng Publishing Group Inc
7901 Stoneridge Drive, Suite 501,
Pleasanton, CA 94588, USA
Telephone: +1-925-2238242
Fax: +1-925-2238243
E-mail: bpgoffice@wjgnet.com
Help Desk: <http://www.f6publishing.com/helpdesk>
<http://www.wjgnet.com>

PUBLICATION DATE
July 7, 2018

COPYRIGHT
© 2018 Baishideng Publishing Group Inc. Articles published by this Open-Access journal are distributed under the terms of the Creative Commons Attribution Non-commercial License, which permits use, distribution, and reproduction in any medium, provided the original work is properly cited, the use is non commercial and is otherwise in compliance with the license.

SPECIAL STATEMENT
All articles published in journals owned by the Baishideng Publishing Group (BPG) represent the views and opinions of their authors, and not the views, opinions or policies of the BPG, except where otherwise explicitly indicated.

INSTRUCTIONS TO AUTHORS
Full instructions are available online at <http://www.wjgnet.com/bpg/gerinfo/204>

ONLINE SUBMISSION
<http://www.f6publishing.com>

Observational Study

Transforming growth factor- β and peripheral regulatory cells are negatively correlated with the overall survival of hepatocellular carcinoma

Yang An, Song Gao, Wen-Chao Zhao, Bao-An Qiu, Nian-Xin Xia, Peng-Jun Zhang, Zhen-Ping Fan

Yang An, Wen-Chao Zhao, Bao-An Qiu, Nian-Xin Xia, Department of Hepato-Biliary-Pancreatic Surgery, Navy General Hospital of Chinese People's Liberation Army, Beijing 100048, China

Song Gao, Peng-Jun Zhang, Key Laboratory of Carcinogenesis and Translational Research (Ministry of Education/Beijing), Department of Interventional Therapy, Peking University Cancer Hospital & Institute, Beijing 100142, China

Zhen-Ping Fan, Liver Disease Center for Cadre Medical Care, Beijing 302 Military Hospital, Beijing 100039, China

ORCID number: Yang An (0000-0002-2515-4562); Song Gao (0000-0002-7466-3654); Wen-Chao Zhao (0000-0002-1445-376X); Bao-An Qiu (0000-0001-9474-3101); Nian-Xin Xia (0000-0002-3785-1381); Peng-Jun Zhang (0000-0002-7391-2495); Zhen-Ping Fan (0000-0001-5725-5758).

Author contributions: An Y, Gao S, Fan ZP, and Zhang PJ designed the study; An Y, Gao S, Zhao WC, and Xia NX performed the research; An Y, Gao S, Qiu BA, Fan ZP, and Zhang PJ analyzed the data; An Y and Gao S wrote the paper; Fan ZP and Zhang PJ revised the manuscript for final submission; An Y and Gao S contributed equally to this study; Fan ZP and Zhang PJ are the co-corresponding authors.

Supported by the National Key R and D Program of China, No. 2016YFC0106604; and National Natural Science Foundation of China, No. 81502591.

Institutional review board statement: The study was reviewed and approved by the Peking University Cancer Hospital & Institute review board.

Informed consent statement: All study participants or their legal guardian provided written informed consent prior to study enrollment.

Conflict-of-interest statement: We declare that we have no financial or personal relationships with other individuals or organizations that can inappropriately influence our work and that there is no professional or other personal interest of any nature

in any product, service, and/or company that could be construed as influencing the position presented in or the review of the manuscript.

Data sharing statement: No additional data are available.

STROBE statement: The guidelines of the STROBE Statement have been adopted in our manuscript.

Open-Access: This article is an open-access article which was selected by an in-house editor and fully peer-reviewed by external reviewers. It is distributed in accordance with the Creative Commons Attribution Non Commercial (CC BY-NC 4.0) license, which permits others to distribute, remix, adapt, build upon this work non-commercially, and license their derivative works on different terms, provided the original work is properly cited and the use is non-commercial. See: <http://creativecommons.org/licenses/by-nc/4.0/>

Manuscript source: Unsolicited manuscript

Correspondence to: Zhen-Ping Fan, MD, Doctor, The Liver Disease Center for Cadre Medical Care, Beijing 302 Military Hospital, Xi Si Huan Zhong Road 100, Beijing 100039, China. fanzp302@126.com
Telephone: +86-1-66933466
Fax: +86-1-63879735

Received: March 22, 2018

Peer-review started: March 22, 2018

First decision: April 10, 2018

Revised: April 14, 2018

Accepted: June 2, 2018

Article in press: June 2, 2018

Published online: July 7, 2018

Abstract

AIM

To understand the cellular and molecular changes in

peripheral blood that can lead to the development of hepatocellular carcinoma (HCC) and provide new methods for its diagnosis and treatment.

METHODS

Peripheral blood mononuclear cells were isolated from the peripheral blood of HCC patients and normal controls and then analyzed by flow cytometry. The percentage of transforming growth factor- β (TGF- β)+ regulatory cells (Tregs) in the peripheral blood was measured, and the expression of TGF- β was also determined. Then, the relationship between the changes and the 5-year survival of patients was analyzed. In addition, recombinant human TGF- β (rhTGF- β) and recombinant human interleukin-6 were added to stimulate the cultured cells, and their effects on HCC were evaluated.

RESULTS

The expression of TGF- β and the percentage of TGF- β + Tregs in the peripheral blood of HCC patients increased significantly compared with normal controls. Compared with the low TGF- β expression group, the high TGF- β expression group had a significantly lower 5-year survival rate, and the same result was found in the two TGF- β + Treg groups, suggesting that TGF- β and TGF- β + Tregs were negatively correlated with the overall survival of the patients. In addition, rhTGF- β promoted the growth of tumor cells and induced high expression levels of IL-6, which further promoted tumor proliferation.

CONCLUSION

The results showed that TGF- β may promote tumor growth and proliferation by inducing the production of IL-6, and TGF- β and TGF- β + Tregs may serve as new markers for predicting a poor prognosis in HCC.

Key words: Hepatocellular carcinoma; Transforming growth factor- β ; Regulatory cells; Peripheral blood mononuclear cells; Interleukin-6

© The Author(s) 2018. Published by Baishideng Publishing Group Inc. All rights reserved.

Core tip: We aimed to understand the cellular and molecular changes in peripheral blood of hepatocellular carcinoma (HCC) and provide new methods for its diagnosis and treatment. The results showed that transforming growth factor- β (TGF- β) may promote tumor growth and proliferation by inducing the production of interleukin-6, and TGF- β and TGF- β + regulatory cells may serve as new markers for predicting poor prognosis of HCC.

An Y, Gao S, Zhao WC, Qiu BA, Xia NX, Zhang PJ, Fan ZP. Transforming growth factor- β and peripheral regulatory cells are negatively correlated with the overall survival of hepatocellular carcinoma. *World J Gastroenterol* 2018; 24(25): 2733-2740 Available from: URL: <http://www.wjgnet.com/1007-9327/full/v24/i25/2733.htm> DOI: <http://dx.doi.org/10.3748/wjg.v24.i25.2733>

INTRODUCTION

Hepatocellular carcinoma (HCC) is the second leading cause of cancer deaths in the world^[1]. According to the World Health Organization (WHO), approximately 788000 people die from primary liver cancer each year. It has been reported that the morbidity and mortality of HCC in China are very high^[2,3]. Improvements have been made in HCC treatment, including surgery, chemotherapy, radiation therapy, and ablation; however, HCC still has a poor prognosis because of recurrence and tumor metastasis^[4].

Studies have shown that tumors can establish the tumor microenvironment by regulating lymphocytes, which play an important role in tumor development through inflammatory immunity^[5,6]. Tumor cells can inhibit the function of tumor infiltrating lymphocytes (TILs) in the tumor microenvironment through inhibitory signaling pathways in the immune system; this process results in the immunosuppression of tumors^[7,8]. Tumors can also accumulate infiltrated immune cells to inhibit anti-tumor effects by secreting immunosuppressive factors, such as interleukin-2 (IL-2), transforming growth factor- β (TGF- β), matrix metalloproteinase (MMP), vascular endothelial growth factor (VEGF), and interleukin-10 (IL-10), into the microenvironment^[9]. It has also been reported that tumors can affect the proliferation, migration, and survival of cancer cells through the inflammatory effects of immune cells^[10,11]. It is well known that regulatory cells (Tregs) can promote the development of tumors by inhibiting immune surveillance^[12]. The knockdown of forkhead box P3 (Foxp3), which is specifically expressed in Tregs, can reduce the immunosuppression of Tregs, which can suppress tumor growth in mice with HCC^[13]. Therefore, understanding the immune status, especially the inflammatory state of cancer, may provide a new method of immunomodulation for the treatment of cancer.

Studies have shown that TGF- β is one of the key products of Tregs^[14], and it maintains the internal stability of stem cells and promotes fibrosis, embryonic development, tissue repair, cell proliferation and differentiation, and immune regulation^[15]. Tumor-associated TGF- β negatively regulates the host immune response through the following mechanisms^[16,17]. First, tumor-associated TGF- β mediates the differentiation of Th1 cells to Th2 cells *via* IL-10. Second, tumor-associated TGF- β directly inhibits M1 giant macrophages and the antitumor immune responses mediated by Th1. Third, tumor-associated TGF- β inhibits the functions of CD8+ T lymphocytes, natural killer (NK) cells, and dendritic cells, which have cytotoxic effects. Fourth, tumor-associated TGF- β produces CD4+ CD25+ Tregs to inhibit the function of other lymphocyte groups^[18]. Finally, tumor-associated TGF- β promotes M2 macrophages, which can produce reactive oxygen species to promote tumor development through secreting immunosuppressive cytokines (TGF- β and IL-10), angiogenic factors (CXC chemokines, MMP-9, and VEGF), proinflammatory

Table 1 Clinicopathological characteristics of 100 patients with hepatocellular carcinoma *n* (%)

Variables	HCC (<i>n</i> = 100)	Normal controls (<i>n</i> = 36)	<i>P</i> value
Average age (yr)	53.33	50.36	0.16
Age (yr)			0.61
≤ 50	45 (45.0)	18 (50.0)	
> 50	55 (55.0)	18 (50.0)	
Sex			0.68
Male	65 (65.0)	22 (61.1)	
Female	35 (35.0)	14 (38.9)	
T classification			
T1	12 (12.0)		
T2	36 (36.0)		
T3	42 (42.0)		
T4	10 (10.0)		

HCC: Hepatocellular carcinoma.

cytokines (IL-1, TNF- α , and IL-6) and tumor growth factors. TGF- β has a dual role in the development of tumors, and it can promote the invasion and metastasis of tumor cells mainly by regulating the immune system and tumor microenvironment^[16].

MATERIALS AND METHODS

Patients and blood sample collection

We included 100 patients with HCC who were diagnosed at Beijing Cancer Hospital between 2010 and 2014, and we included 36 healthy subjects without any signs of disease. Blood samples were collected before any treatment. According to the 2002 American Joint Committee on Cancer (AJCC) staging criteria, the samples were divided into two groups: Early stage (stages I and II) and late stage (stages III and IV). All patient information is shown in Table 1. Of the HCC patients, 63 were followed up until death or until July 31, 2017. The median follow-up time was 40.3 mo (mean \pm SD: 40.3 \pm 11.6 mo). All participants provided informed consent, and the study was approved by the Ethics Committee of Beijing Cancer Hospital.

Measurement of cytokines

Whole blood samples from all patients and normal controls were centrifuged at 3000 g for 10 min to collect the serum; then, the concentrations of TGF- β and IL-6 were measured by enzyme-linked immunosorbent assay (ELISA) kits (eBioscience, Waltham, MA, United States) and human inflammation CBA kits (BD Biosciences, San Jose, CA, United States), respectively.

Collection and culture of peripheral blood mononuclear cells (PBMCs)

Density centrifugation of 5 mL of heparinized peripheral blood from patients with HCC and normal controls was performed to obtain PBMCs. There were two steps of the horizontal centrifugation: 2000 r/min for 20 min and 15000 r/min for 10 min^[19]. The final cell pellet was resuspended and cultured in the appropriate amount of 1640 medium containing 10% fetal bovine serum.

The cells were counted using a microscope, and the cell concentration was adjusted to 2×10^6 /mL. A total of 200 μ L of each cell suspension was pipetted into a 96-well flat bottom cell culture plate, and 1 μ L of 10 μ g/mL PMA, 2 μ L of 100 μ g/mL IO, and 2 μ L of 300 μ g/mL BFA were added. The cells were incubated at 37 °C with 5% CO₂ for 4-5 h and then subjected to flow cytometry and analysis.

Flow cytometry analysis

CD4 and CD3 antibodies were added to label the cells. A Foxp3 antibody was also added to detect the Tregs. A constant volume of 100 μ L of phosphate buffered saline (PBS) was used for the flow cytometry analyses, which were performed on a BD FACSCalibur system.

Cell culture

HepG2, PLHC-1, and LMH cell lines were selected for cell culture, and all three cell lines were cultured in an incubator at 37 °C and 5% CO₂. rhTGF- β or rhIL-6 (PeproTech, Rocky Hill, NJ, United States) was added to three 6-well plates containing the three HCC cell lines to stimulate the tumor cells for 24-48 h according to the manufacturer's instructions. To analyze the proliferation rates, 3-(4,5-dimethylthiazol-2-yl)-2,5-diphenyltetrazolium bromide (MTT) assays and cell counting were performed.

Statistical analysis

Statistical analyses were performed using GraphPad Prism 5.0 (San Diego, CA, United States). The data are expressed as the mean \pm SD. T-tests were used to assess the differences between groups. The overall survival rates of HCC were analyzed with Kaplan-Meier curves. All tests were two-tailed, and *P* < 0.05 was considered to be statistically significant.

RESULTS

Increased expression of TGF- β in the serum of liver cancer patients

We measured the levels of TGF- β in the serum of 100

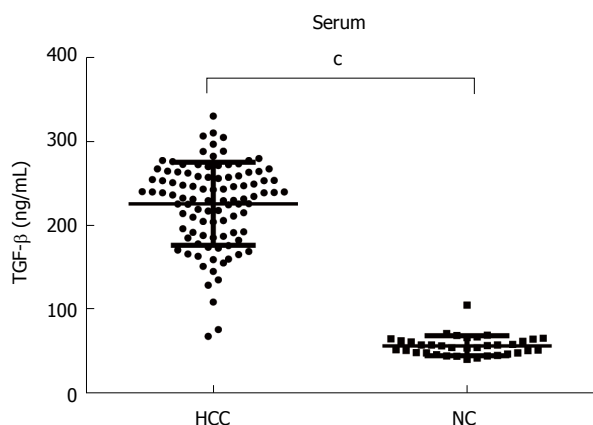


Figure 1 Levels of transforming growth factor- β in the serum of hepatocellular carcinoma patients and normal controls. $^cP < 0.001$. TGF- β : Transforming growth factor- β ; HCC: Hepatocellular carcinoma.

patients with HCC and 36 normal controls using ELISAs. The results showed that the serum levels of TGF- β were significantly higher in HCC patients (225.82 ± 48.93 ng/mL) than in normal controls (57.29 ± 11.70 ng/mL, $P < 0.0001$, Figure 1).

Tregs are associated with the progression of HCC

Studies have shown that TGF- β is one of the key products of Tregs^[14]. We performed flow cytometry analyses of 100 HCC samples and 36 normal controls, and the results clearly indicated TGF- β -expressing cell populations in the PBMCs and Tregs. The population of TGF- β -expressing cells in the Tregs was analyzed by flow cytometry, and Figure 2A is representative of all the data figures. A statistical analysis showed that the proportion of TGF- β + Tregs was significantly higher in HCC patients ($14.14 \pm 6.02\%$) than in normal controls ($3.00 \pm 1.43\%$, $P < 0.001$, Figure 2B). In fact, the percentage of TGF- β + Tregs was significantly higher in HCC patients in advanced stages ($15.47 \pm 6.95\%$) than in HCC patients in early stages ($12.70 \pm 4.37\%$) and normal controls (Figure 2C), suggesting a possible positive correlation between the presence of TGF- β + Tregs and tumor progression.

Increased levels of TGF- β and TGF- β + Tregs may predict a poor prognosis for HCC

In this study, we analyzed the effects of high and low levels of peripheral blood TGF- β and TGF- β + Tregs on the five-year survival rate of 63 patients with HCC who were followed up. The results showed that compared to the low TGF production group, the high TGF- β production group had a significantly lower overall survival rate (Figure 3A, 31.0% vs 53.0% , $P = 0.010$). Compared with the low TGF- β + Tregs group, the high TGF- β + Tregs group had a significantly higher death hazard rate (Figure 3B, 38.0% vs 53.5% , $P = 0.047$). The results suggest that the overall survival of the patients with HCC is negatively correlated with the

levels of TGF and Tregs.

TGF- β activates IL-6 production in HCC to promote tumor growth

Three human HCC cell lines, namely, HepG2, PLHC-1, and LMH, were selected for this study. We added rhTGF- β to stimulate the three HCC cell lines and then detected changes in their biological function. Compared with the untreated group, all three HCC cell lines treated with 100 ng/mL rhTGF- β for 48 h showed significant cell proliferation afterwards (Figure 4A). We also examined IL-6 levels in the cell supernatants and found that IL-6 levels were significantly higher in the rhTGF- β -treated cell supernatants than in the untreated cell supernatants (Figure 4B). Furthermore, the three HCC cell lines were treated with rhIL-6, and significantly higher cell proliferation rates were found in all three HCC cell lines treated with rhIL-6 than in the untreated cells (Figure 4C). These results indicate that TGF- β has the potential to promote HCC cell proliferation, and it can also mediate IL-6 production to promote further tumor cell proliferation.

DISCUSSION

This study demonstrated that the levels of TGF- β and TGF- β + Tregs in the peripheral blood were significantly higher in HCC patients than in normal controls, and these levels were negatively associated with the 5-year survival of HCC patients. At the same time, TGF may promote the development of tumors by inducing IL-6 expression, suggesting that peripheral TGF- β and TGF- β + Tregs can be used as potential markers to predict a poor prognosis in HCC patients.

Understanding the immune status, especially the inflammatory state of cancer, may provide a new method of immunomodulation for the treatment of cancer. In the early stages of cancer, or the stages of hepatocellular degeneration and injury, abnormally high expression levels of IGF-II have been observed, which can be an indicator for the early diagnosis of liver cancer. Liver injury may be caused by the abnormal activation of the IGF-II gene by the cancer-causing factor diethylnitrosamine^[20,21]. It was also reported that high expression levels of IGF-II in the serum and livers of rats are events in the early and advanced stages of the occurrence and development of liver cancer^[21]. Some studies have shown that VEGF is more sensitive for the prediction of liver cancer in patients with cirrhosis related to hepatitis C virus (HCV), and VEGF expression is related to tumor vascular invasion^[22]. VEGF expression has been associated with tumor diameter and lymph node metastasis, and its positive rate is 72.0% in HCC. Therefore, VEGF may be applied for evaluating hematopoietic liver cancer metastasis and predicting HCC with HCV. It has been reported that the expression levels of Golgi protein 73 (GP73) are significantly higher in HCC serum samples than

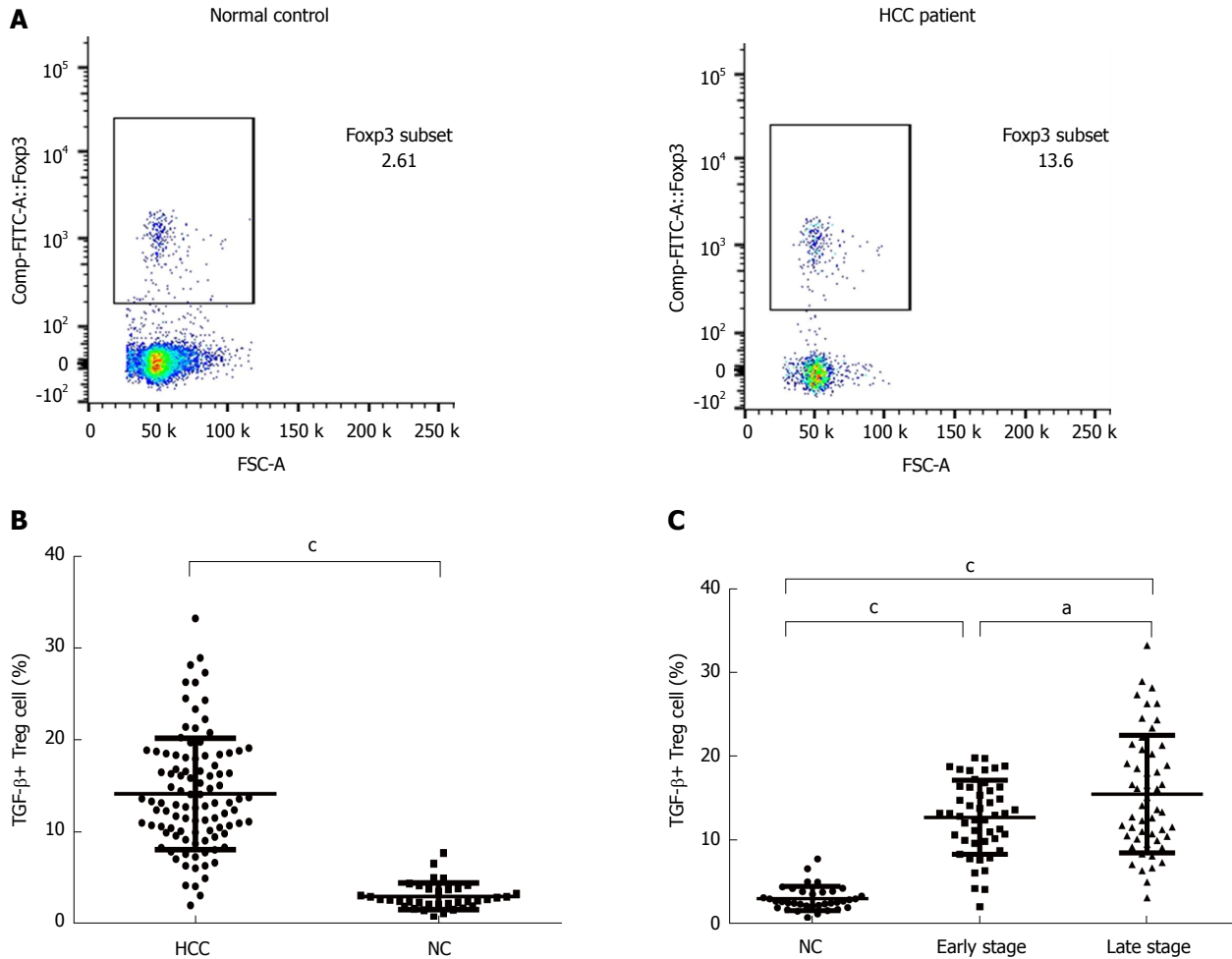


Figure 2 Increase of transforming growth factor- β + regulatory cells in the serum of hepatocellular carcinoma patients. A: Representative plots for identification of the TGF- β + Treg cells producing cells in PBMC; B: Analysis of the frequency of TGF- β + Treg cell from the PBMCs of healthy donors in comparison to HCC patients; C: Analysis of the frequency of TGF- β + Treg cell from the PBMCs of healthy donors in comparison to HCC patients with tumors at different stages. ^a $P < 0.05$, ^b $P < 0.01$, ^c $P < 0.001$. TGF- β : Transforming growth factor- β ; Treg: Regulatory cells; PBMC: Peripheral blood mononuclear cells; HCC: Hepatocellular carcinoma.

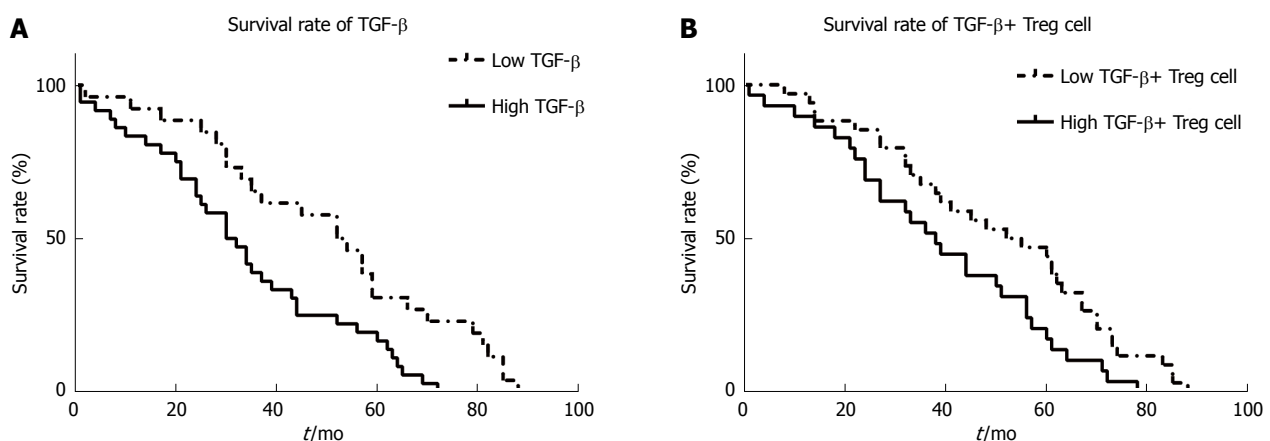


Figure 3 Level of transforming growth factor- β and transforming growth factor- β + regulatory cells affect 5-year survival for hepatocellular carcinoma patients. The 5-year survival rates for HCC patients with a high and low level of TGF- β (A), and TGF- β + Treg cells (B) in their PBMCs. The survival rates were determined using the Kaplan-Meier method (log-rank test). TGF- β : Transforming growth factor- β ; Treg: Regulatory cells; HCC: Hepatocellular carcinoma.

in control serum samples. GP73 has high specificity and sensitivity for diagnosing HCC and is expected to be validated as another liver cancer marker^[23]. The expression levels of des-gamma-carboxy prothrombin

(DCP) are affected by the pathological type and stage of tumors and the type of hepatic lesions in HCC. Its ability to diagnose HCC is better than that of alpha fetoprotein (AFP) and AFP-L3, which are first-line clinical tumor

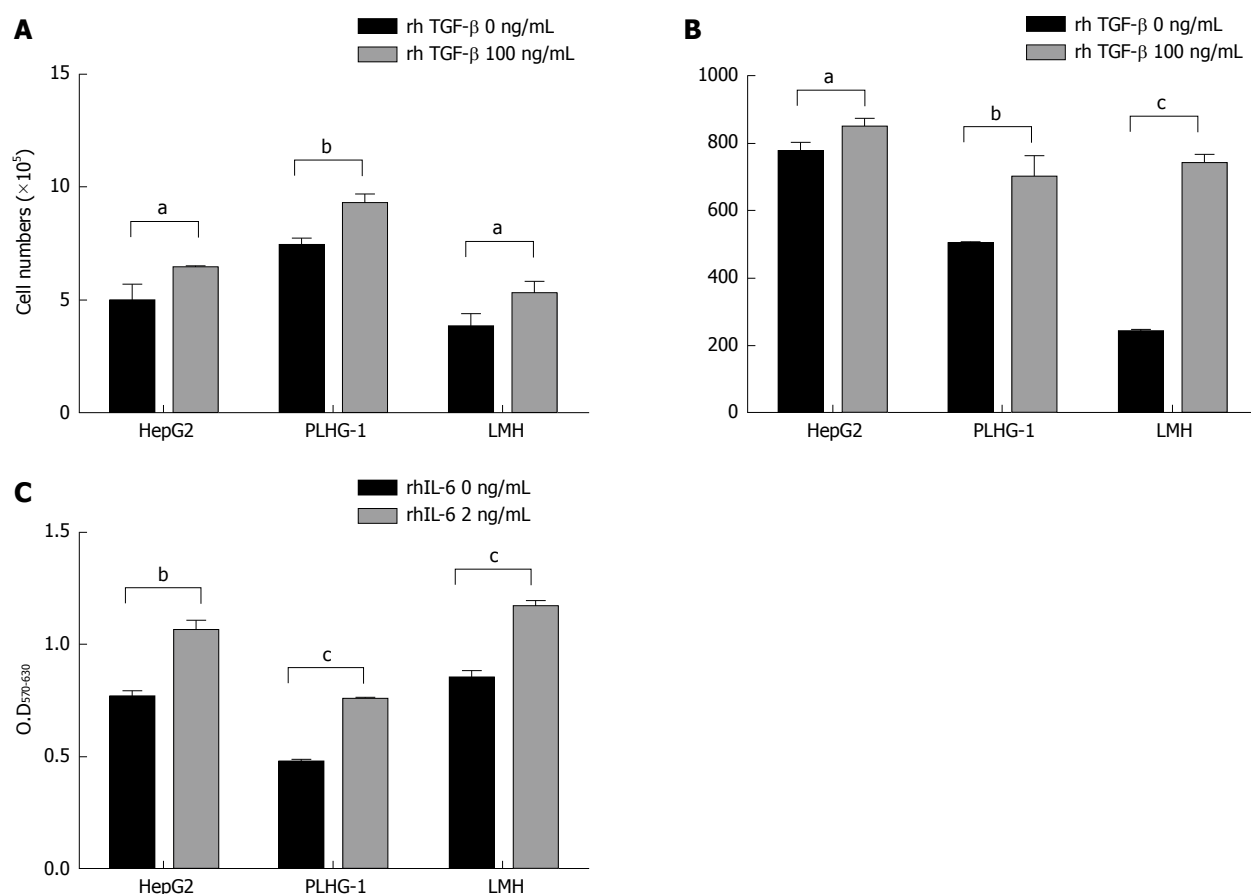


Figure 4 Transforming growth factor-β can promote the proliferation of tumor cells and increase the level of interleukin-6 in hepatocellular carcinoma cell lines production. A: The cell numbers of the three HCC cell lines after treatment with 100 ng/mL rhTGF-β for 48 h; B: The three HCC culture supernatants were analyzed for protein levels of IL-6 after treatment with rhTGF-β for 48 h using ELISA; C: The three HCC cell lines were treated with or without rhIL-6 for 48 h, and cell proliferation was determined by MTT assay. ^a*P* < 0.05, ^b*P* < 0.01, ^c*P* < 0.001. TGF-β: Transforming growth factor-β; Treg: Regulatory cells; HCC: Hepatocellular carcinoma.

markers, and it can be used as an early indicator for diagnosing liver cancer^[24,25].

Tregs are a subpopulation of T lymphocytes that have unique *in vivo* functions; Tregs can secrete IL-4, IL-10, and TGF-β and inhibit effector T cells, and they are involved in autoimmune diseases, transplantation immunity, and tumor immunity^[26]. According to the biological function of Th cells and Tregs, there is a dynamic balance between the two types of immune cells. The disruption of the balance between proinflammatory Th17 cells and suppressor Tregs is a key factor in the development of inflammation, autoimmune diseases, and tumors, and their expression levels in different immune response types are not the same. Recent studies have shown that tumor cells secrete multiple factors that can induce the production of Tregs^[27,28]. Th17 cells are negatively correlated with tumor progression because of the reduction in their number and proportion, whereas Tregs are positively correlated since their quantity and proportion are increased^[29]; these data are consistent with the findings of our study. Tregs can suppress immune surveillance during tumor development in a mouse model of carcinogen-induced sarcoma^[30]. Tregs can also be considered as the main component of tumor

evasion of the host immune system and, thus, can serve as an indicator of poor prognosis and even as a target for immunotherapy^[31-33].

In summary, our study demonstrated that the levels of expression of TGF-β and TGF-β+ Tregs in the peripheral blood of HCC patients were significantly increased and were related to the progression of HCC and the 5-year survival of patients. This suggests that peripheral blood TGF-β levels can serve as a potential indicator of poor prognosis for HCC and provide a more effective method for the diagnosis and treatment of HCC.

ARTICLE HIGHLIGHTS

Research background

Although the treatment of hepatocellular carcinoma (HCC) has been improved, including surgery, chemotherapy, radiation therapy, and ablation, prognosis remains poor because of the recurrence and tumor metastasis.

Research motivation

Understanding the immune status, especially the inflammatory state, of cancer may provide insight into the development of new immunomodulation methods for the treatment of cancer and may potentially provide novel prognostic predictors of HCC.

Research objectives

To understand the cellular and molecular changes in peripheral blood that can lead to the development of HCC and provide new methods for its diagnosis and treatment.

Research methods

Peripheral blood mononuclear cells were isolated from peripheral blood of HCC patients and normal controls and then analyzed by flow cytometry. The percentage of transforming growth factor- β (TGF- β)+ Treg cells in peripheral blood was measured, and the expression of TGF- β was also detected. The relationship between the changes and the 5-year survival of patients was analyzed. In addition, recombinant human TGF- β and recombinant human IL-6 were added respectively to stimulate the cultured cells to evaluate its effect on HCC.

Research results

The expression of TGF- β and the percentage of TGF- β + Treg cells in peripheral blood in HCC patients increased significantly compared with normal controls. Compared with the low TGF- β expression group, the 5-year survival rate was significantly lower in the high TGF- β expression group, and the same result was found in the two TGF- β + Treg groups, suggesting that TGF- β and TGF- β + Treg cells were negatively correlated with the overall survival of the patients. In addition, recombinant human TGF- β promoted the growth of tumor cells and induced high expression of IL-6 which can further promote tumor proliferation.

Research conclusions

The results showed that TGF- β may promote tumor growth and proliferation by inducing the production of IL-6, and TGF- β and TGF- β + Treg cells may serve as new markers for predicting poor prognosis of HCC.

Research perspectives

Our study provided a novel insight to understand the cellular and molecular changes in peripheral blood of HCC and provide new methods for its diagnosis and treatment.

REFERENCES

- Llovet JM, Villanueva A, Lachenmayer A, Finn RS. Advances in targeted therapies for hepatocellular carcinoma in the genomic era. *Nat Rev Clin Oncol* 2015; **12**: 436 [PMID: 26099984 DOI: 10.1038/nrclinonc.2015.121]
- Han KH, Kudo M, Ye SL, Choi JY, Poon RT, Seong J, Park JW, Ichida T, Chung JW, Chow P, Cheng AL. Asian consensus workshop report: expert consensus guideline for the management of intermediate and advanced hepatocellular carcinoma in Asia. *Oncology* 2011; **81** Suppl 1: 158-164 [PMID: 22212951 DOI: 10.1159/000333280]
- Jemal A, Bray F, Center MM, Ferlay J, Ward E, Forman D. Global cancer statistics. *CA Cancer J Clin* 2011; **61**: 69-90 [PMID: 21296855 DOI: 10.3322/caac.20107]
- Maluccio M, Covey A. Recent progress in understanding, diagnosing, and treating hepatocellular carcinoma. *CA Cancer J Clin* 2012; **62**: 394-399 [PMID: 23070690 DOI: 10.3322/caac.21161]
- Ganss R, Hanahan D. Tumor microenvironment can restrict the effectiveness of activated antitumor lymphocytes. *Cancer Res* 1998; **58**: 4673-4681 [PMID: 9788621]
- Coussens LM, Werb Z. Inflammation and cancer. *Nature* 2002; **420**: 860-867 [PMID: 12490959 DOI: 10.1038/nature01322]
- Wherry EJ. T cell exhaustion. *Nat Immunol* 2011; **12**: 492-499 [PMID: 21739672]
- Chen X, Liang H, Guan D, Wang C, Hu X, Cui L, Chen S, Zhang C, Zhang J, Zen K, Zhang CY. A combination of Let-7d, Let-7g and Let-7i serves as a stable reference for normalization of serum microRNAs. *PLoS One* 2013; **8**: e79652 [PMID: 24223986 DOI: 10.1371/journal.pone.0079652]
- Beatty GL, Gladney WL. Immune escape mechanisms as a guide for cancer immunotherapy. *Clin Cancer Res* 2015; **21**: 687-692 [PMID: 25501578 DOI: 10.1158/1078-0432.CCR-14-1860]
- Lin WW, Karin M. A cytokine-mediated link between innate immunity, inflammation, and cancer. *J Clin Invest* 2007; **117**: 1175-1183 [PMID: 17476347 DOI: 10.1172/JCI31537]
- Douglas WG, Tracy E, Tan D, Yu J, Hicks WL Jr, Rigual NR, Loree TR, Wang Y, Baumann H. Development of head and neck squamous cell carcinoma is associated with altered cytokine responsiveness. *Mol Cancer Res* 2004; **2**: 585-593 [PMID: 15498933]
- Linehan DC, Goedegebuure PS. CD25+ CD4+ regulatory T-cells in cancer. *Immunol Res* 2005; **32**: 155-168 [PMID: 16106066 DOI: 10.1385/IR.32:1-3:155]
- Shi C, Zhang Y, Yang H, Dong T, Chen Y, Xu Y, Yang X, Liu P. Ultrasound-targeted microbubble destruction-mediated Foxp3 knockdown may suppress the tumor growth of HCC mice by relieving immunosuppressive Tregs function. *Exp Ther Med* 2018; **15**: 31-38 [PMID: 29387180 DOI: 10.3892/etm.2017.5421]
- Glebezdina NS, Olina AA, Nekrasova IV, Kuklina EM. Role of Endogenous Melatonin in the Regulation of Th17/Treg Balance during Pregnancy. *Bull Exp Biol Med* 2018; **164**: 462-465 [PMID: 29504099 DOI: 10.1007/s10517-018-4013-1]
- Patman G. Liver cancer: TGF- β and cholangiocarcinoma. *Nat Rev Gastroenterol Hepatol* 2016; **13**: 2-3 [PMID: 26669764 DOI: 10.1038/nrgastro.2015.218]
- Achyut BR, Yang L. Transforming growth factor- β in the gastrointestinal and hepatic tumor microenvironment. *Gastroenterology* 2011; **141**: 1167-1178 [PMID: 21839702 DOI: 10.1053/j.gastro.2011.07.048]
- Derynck R, Zhang YE. Smad-dependent and Smad-independent pathways in TGF-beta family signalling. *Nature* 2003; **425**: 577-584 [PMID: 14534577 DOI: 10.1038/nature02006]
- Shen Y, Wei Y, Wang Z, Jing Y, He H, Yuan J, Li R, Zhao Q, Wei L, Yang T, Lu J. TGF- β regulates hepatocellular carcinoma progression by inducing Treg cell polarization. *Cell Physiol Biochem* 2015; **35**: 1623-1632 [PMID: 25824460 DOI: 10.1159/000373976]
- Kryczek I, Banerjee M, Cheng P, Vatan L, Szeliga W, Wei S, Huang E, Finlayson E, Simeone D, Welling TH, Chang A, Coukos G, Liu R, Zou W. Phenotype, distribution, generation, and functional and clinical relevance of Th17 cells in the human tumor environments. *Blood* 2009; **114**: 1141-1149 [PMID: 19470694 DOI: 10.1182/blood-2009-03-208249]
- Ikeda Y, Kajiyama K, Yamashita Y, Ikegami T, Uchiyama H, Soejima Y, Kawanaka H, Ikeda T, Morita M, Oki E, Saeki H, Suehiro T, Mimori K, Sugimachi K, Shirabe K, Maehara Y. Differential expression of insulin-like growth factor 1 in human primary liver cancer. *Fukuoka Igaku Zasshi* 2013; **104**: 334-338 [PMID: 24511663]
- Wong VW, Yu J, Cheng AS, Wong GL, Chan HY, Chu ES, Ng EK, Chan FK, Sung JJ, Chan HL. High serum interleukin-6 level predicts future hepatocellular carcinoma development in patients with chronic hepatitis B. *Int J Cancer* 2009; **124**: 2766-2770 [PMID: 19267406 DOI: 10.1002/ijc.24281]
- Mukozu T, Nagai H, Matsui D, Kanekawa T, Sumino Y. Serum VEGF as a tumor marker in patients with HCV-related liver cirrhosis and hepatocellular carcinoma. *Anticancer Res* 2013; **33**: 1013-1021 [PMID: 23482775]
- Mao Y, Yang H, Xu H, Lu X, Sang X, Du S, Zhao H, Chen W, Xu Y, Chi T, Yang Z, Cai J, Li H, Chen J, Zhong S, Mohanti SR, Lopez-Soler R, Millis JM, Huang J, Zhang H. Golgi protein 73 (GOLPH2) is a valuable serum marker for hepatocellular carcinoma. *Gut* 2010; **59**: 1687-1693 [PMID: 20876776 DOI: 10.1136/gut.2010.214916]
- Marrero JA, Su GL, Wei W, Emick D, Conjeevaram HS, Fontana RJ, Lok AS. Des-gamma carboxyprothrombin can differentiate hepatocellular carcinoma from nonmalignant chronic liver disease in american patients. *Hepatology* 2003; **37**: 1114-1121 [PMID: 12717392 DOI: 10.1053/jhep.2003.50195]
- Volk ML, Hernandez JC, Su GL, Lok AS, Marrero JA. Risk factors for hepatocellular carcinoma may impair the performance of biomarkers: a comparison of AFP, DCP, and AFP-L3. *Cancer Biomark* 2007; **3**: 79-87 [PMID: 17522429]

- 26 **Ernerudh J**, Berg G, Mjösberg J. Regulatory T helper cells in pregnancy and their roles in systemic versus local immune tolerance. *Am J Reprod Immunol* 2011; **66** Suppl 1: 31-43 [PMID: 21726336 DOI: 10.1111/j.1600-0897.2011.01049.x]
- 27 **Maturu P**, Jones D, Ruteshouser EC, Hu Q, Reynolds JM, Hicks J, Putluri N, Ekmekcioglu S, Grimm EA, Dong C, Overwijk WW. Role of Cyclooxygenase-2 Pathway in Creating an Immunosuppressive Microenvironment and in Initiation and Progression of Wilms' Tumor. *Neoplasia* 2017; **19**: 237-249 [PMID: 28254151 DOI: 10.1016/j.neo.2016.07.009]
- 28 **Holmgaard RB**, Zamarin D, Li Y, Gasmi B, Munn DH, Allison JP, Merghoub T, Wolchok JD. Tumor-Expressed IDO Recruits and Activates MDSCs in a Treg-Dependent Manner. *Cell Rep* 2015; **13**: 412-424 [PMID: 26411680 DOI: 10.1016/j.celrep.2015.08.077]
- 29 **Chen X**, Du Y, Lin X, Qian Y, Zhou T, Huang Z. CD4+CD25+ regulatory T cells in tumor immunity. *Int Immunopharmacol* 2016; **34**: 244-249 [PMID: 26994448 DOI: 10.1016/j.intimp.2016.03.009]
- 30 **Betts G**, Twohig J, Van den Broek M, Sierro S, Godkin A, Gallimore A. The impact of regulatory T cells on carcinogen-induced sarcogenesis. *Br J Cancer* 2007; **96**: 1849-1854 [PMID: 17565340 DOI: 10.1038/sj.bjc.6603824]
- 31 **Shou J**, Zhang Z, Lai Y, Chen Z, Huang J. Worse outcome in breast cancer with higher tumor-infiltrating FOXP3+ Tregs : a systematic review and meta-analysis. *BMC Cancer* 2016; **16**: 687 [PMID: 27566250 DOI: 10.1186/s12885-016-2732-0]
- 32 **Xu W**, Liu H, Song J, Fu HX, Qiu L, Zhang BF, Li HZ, Bai J, Zheng JN. The appearance of Tregs in cancer nest is a promising independent risk factor in colon cancer. *J Cancer Res Clin Oncol* 2013; **139**: 1845-1852 [PMID: 24005418 DOI: 10.1007/s00432-013-1500-7]
- 33 **Mizukami Y**, Kono K, Kawaguchi Y, Akaike H, Kamimura K, Sugai H, Fujii H. Localisation pattern of Foxp3+ regulatory T cells is associated with clinical behaviour in gastric cancer. *Br J Cancer* 2008; **98**: 148-153 [PMID: 18087278 DOI: 10.1038/sj.bjc.6604149]

P- Reviewer: Czubkowski P, Gobejishvili L, Tatsuya O
S- Editor: Wang XJ **L- Editor:** Filipodia **E- Editor:** Huang Y





Published by **Baishideng Publishing Group Inc**
7901 Stoneridge Drive, Suite 501, Pleasanton, CA 94588, USA
Telephone: +1-925-223-8242
Fax: +1-925-223-8243
E-mail: bpgoffice@wjgnet.com
Help Desk: <http://www.f6publishing.com/helpdesk>
<http://www.wjgnet.com>



ISSN 1007-9327

