

World Journal of *Gastroenterology*

World J Gastroenterol 2018 August 14; 24(30): 3313-3468





REVIEW

- 3313 MicroRNAs as non-invasive diagnostic biomarkers for gastric cancer: Current insights and future perspectives
Link A, Kupcinskas J
- 3330 Nutritional issues in patients with obesity and cirrhosis
Schiavo L, Busetto L, Cesaretti M, Zelber-Sagi S, Deutsch L, Iannelli A
- 3347 Host genetic factors affecting hepatitis B infection outcomes: Insights from genome-wide association studies
Akçay IM, Katrinli S, Ozdil K, Dinler Doganay G, Doganay L

MINIREVIEWS

- 3361 Current guidelines for the management of non-alcoholic fatty liver disease: A systematic review with comparative analysis
Leoni S, Tovoli F, Napoli L, Serio I, Ferri S, Bolondi L
- 3374 Form confers function: Case of the 3'X region of the hepatitis C virus genome
Dutkiewicz M, Ciesiolka J

ORIGINAL ARTICLE

Basic Study

- 3384 Herb-partitioned moxibustion alleviates colon injuries in ulcerative colitis rats
Zhang D, Ren YB, Wei K, Hong J, Yang YT, Wu LJ, Zhang J, Shi Z, Wu HG, Ma XP
- 3398 Novel sericin-based hepatocyte serum-free medium and sericin's effect on hepatocyte transcriptome
Huang Y, Peng Q, Li HY, Jia ZD, Li Y, Gao Y
- 3414 Total flavone of *Abelmoschus manihot* suppresses epithelial-mesenchymal transition *via* interfering transforming growth factor- β 1 signaling in Crohn's disease intestinal fibrosis
Yang BL, Zhu P, Li YR, Xu MM, Wang H, Qiao LC, Xu HX, Chen HJ
- 3426 Identification of a five-long non-coding RNA signature to improve the prognosis prediction for patients with hepatocellular carcinoma
Zhao QJ, Zhang J, Xu L, Liu FF
- 3440 Application of modified primary closure of the pelvic floor in laparoscopic extralevator abdominal perineal excision for low rectal cancer
Wang YL, Zhang X, Mao JJ, Zhang WQ, Dong H, Zhang FP, Dong SH, Zhang WJ, Dai Y

Retrospective Study

**Observational Study**

- 3448** Altered oral microbiota in chronic hepatitis B patients with different tongue coatings

Zhao Y, Mao YF, Tang YS, Ni MZ, Liu QH, Wang Y, Feng Q, Peng JH, Hu YY

CASE REPORT

- 3462** Large heterotopic gastric mucosa and a concomitant diverticulum in the rectum: Clinical experience and endoscopic management

Chen WG, Zhu HT, Yang M, Xu GQ, Chen LH, Chen HT

Contents

World Journal of Gastroenterology
Volume 24 Number 30 August 14, 2018

ABOUT COVER

Editorial board member of *World Journal of Gastroenterology*, Herwig Cerwenka, MD, Professor, Department of Surgery, Medical University of Graz, Graz A-8036, Austria

AIMS AND SCOPE

World Journal of Gastroenterology (*World J Gastroenterol*, *WJG*, print ISSN 1007-9327, online ISSN 2219-2840, DOI: 10.3748) is a peer-reviewed open access journal. *WJG* was established on October 1, 1995. It is published weekly on the 7th, 14th, 21st, and 28th each month. The *WJG* Editorial Board consists of 642 experts in gastroenterology and hepatology from 59 countries.

The primary task of *WJG* is to rapidly publish high-quality original articles, reviews, and commentaries in the fields of gastroenterology, hepatology, gastrointestinal endoscopy, gastrointestinal surgery, hepatobiliary surgery, gastrointestinal oncology, gastrointestinal radiation oncology, gastrointestinal imaging, gastrointestinal interventional therapy, gastrointestinal infectious diseases, gastrointestinal pharmacology, gastrointestinal pathophysiology, gastrointestinal pathology, evidence-based medicine in gastroenterology, pancreatology, gastrointestinal laboratory medicine, gastrointestinal molecular biology, gastrointestinal immunology, gastrointestinal microbiology, gastrointestinal genetics, gastrointestinal translational medicine, gastrointestinal diagnostics, and gastrointestinal therapeutics. *WJG* is dedicated to become an influential and prestigious journal in gastroenterology and hepatology, to promote the development of above disciplines, and to improve the diagnostic and therapeutic skill and expertise of clinicians.

INDEXING/ABSTRACTING

World Journal of Gastroenterology (*WJG*) is now indexed in Current Contents®/Clinical Medicine, Science Citation Index Expanded (also known as SciSearch®), Journal Citation Reports®, Index Medicus, MEDLINE, PubMed, PubMed Central and Directory of Open Access Journals. The 2018 edition of Journal Citation Reports® cites the 2017 impact factor for *WJG* as 3.300 (5-year impact factor: 3.387), ranking *WJG* as 35th among 80 journals in gastroenterology and hepatology (quartile in category Q2).

EDITORS FOR THIS ISSUE

Responsible Assistant Editor: *Xiang Li*
Responsible Electronic Editor: *Shu-Yu Yin*
Proofing Editor-in-Chief: *Lian-Sheng Ma*

Responsible Science Editor: *Rao-Yu Ma*
Proofing Editorial Office Director: *Ze-Mao Gong*

NAME OF JOURNAL

World Journal of Gastroenterology

ISSN

ISSN 1007-9327 (print)
ISSN 2219-2840 (online)

LAUNCH DATE

October 1, 1995

FREQUENCY

Weekly

EDITORS-IN-CHIEF

Andrzej S Tarnawski, MD, PhD, DSc (Med),
Professor of Medicine, Chief Gastroenterology, VA Long Beach Health Care System, University of California, Irvine, CA, 5901 E. Seventh Str., Long Beach, CA 90822, United States

EDITORIAL BOARD MEMBERS

All editorial board members resources online at <http://www.wjgnet.com/1007-9327/editorialboard.htm>

EDITORIAL OFFICE

Ze-Mao Gong, Director
World Journal of Gastroenterology
Baishideng Publishing Group Inc
7901 Stoneridge Drive, Suite 501,
Pleasanton, CA 94588, USA
Telephone: +1-925-2238242
Fax: +1-925-2238243
E-mail: editorialoffice@wjgnet.com
Help Desk: <http://www.f6publishing.com/helpdesk>
<http://www.wjgnet.com>

PUBLISHER

Baishideng Publishing Group Inc
7901 Stoneridge Drive, Suite 501,
Pleasanton, CA 94588, USA
Telephone: +1-925-2238242
Fax: +1-925-2238243
E-mail: bpgoffice@wjgnet.com
Help Desk: <http://www.f6publishing.com/helpdesk>
<http://www.wjgnet.com>

PUBLICATION DATE

August 14, 2018

COPYRIGHT

© 2018 Baishideng Publishing Group Inc. Articles published by this Open-Access journal are distributed under the terms of the Creative Commons Attribution Non-commercial License, which permits use, distribution, and reproduction in any medium, provided the original work is properly cited, the use is non commercial and is otherwise in compliance with the license.

SPECIAL STATEMENT

All articles published in journals owned by the Baishideng Publishing Group (BPG) represent the views and opinions of their authors, and not the views, opinions or policies of the BPG, except where otherwise explicitly indicated.

INSTRUCTIONS TO AUTHORS

Full instructions are available online at <http://www.wjgnet.com/bpg/gerinfo/204>

ONLINE SUBMISSION

<http://www.f6publishing.com>

Observational Study

Altered oral microbiota in chronic hepatitis B patients with different tongue coatings

Yu Zhao, Yu-Feng Mao, Yi-Shuang Tang, Ming-Zhu Ni, Qiao-Hong Liu, Yan Wang, Qin Feng, Jing-Hua Peng, Yi-Yang Hu

Yu Zhao, Yu-Feng Mao, Yi-Shuang Tang, Ming-Zhu Ni, Qiao-Hong Liu, Yan Wang, Qin Feng, Jing-Hua Peng, Institute of Liver Diseases, Shuguang Hospital Affiliated to Shanghai University of Traditional Chinese Medicine, Shanghai 201203, China

Yi-Yang Hu, Institute of Liver Diseases, Key Laboratory of Liver and Kidney Diseases (Ministry of Education), Shuguang Hospital Affiliated to Shanghai University of Traditional Chinese Medicine, Shanghai 201203, China

ORCID number: Yu Zhao (0000-0002-2208-2882); Yu-Feng Mao (0000-0002-8604-9096); Yi-Shuang Tang (0000-0001-5125-8376); Ming-Zhu Ni (0000-0002-5675-953X); Qiao-Hong Liu (0000-0001-9887-8126); Yan Wang (0000-0002-6710-8695); Qin Feng (0000-0002-4641-1636); Jing-Hua Peng (0000-0002-0665-7666); Yi-Yang Hu (0000-0001-9127-7002).

Author contributions: Hu YY designed the study; Zhao Y and Tang YS performed the tongue coating microbial experiments; Tang YS, Liu QH and Wang Y performed the tongue coating metabolic experiments; Tang YS, Feng Q and Peng JH performed the clinical trial; Mao YF and Ni MZ performed the statistical analyses; Zhao Y wrote the paper.

Supported by the Shanghai Educational Development Foundation, No. 14CG41; the National Natural Science Foundation of China, No. 81403298 and No. 81373857; and the National Key New Drug Creation Project, No. 2017ZX09304002.

Institutional review board statement: The study was reviewed and approved by the IRB of Shuguang Hospital affiliated with the Shanghai University of TCM Institutional Review Board.

Informed consent statement: All study participants, or their legal guardian, provided informed written consent prior to study enrollment.

Conflict-of-interest statement: There are no conflicts of interest to report.

STROBE statement: The authors have read the STROBE Statement checklist of items, and the manuscript was prepared and

revised according to the STROBE Statement checklist of items.

Open-Access: This article is an open-access article which was selected by an in-house editor and fully peer-reviewed by external reviewers. It is distributed in accordance with the Creative Commons Attribution Non Commercial (CC BY-NC 4.0) license, which permits others to distribute, remix, adapt, build upon this work non-commercially, and license their derivative works on different terms, provided the original work is properly cited and the use is non-commercial. See: <http://creativecommons.org/licenses/by-nc/4.0/>

Manuscript source: Unsolicited manuscript

Correspondence to: Yi-Yang Hu, MD, PhD, Doctor, Senior Researcher, Institute of Liver Diseases, Key Laboratory of Liver and Kidney Diseases (Ministry of Education), Shuguang Hospital affiliated to Shanghai University of Traditional Chinese Medicine, No.528 Zhangheng Road, Pudong New Area, Shanghai 201203, China. yyhuliver@163.com
Telephone: +86-21-20256526
Fax: +86-21-20256521

Received: May 4, 2018

Peer-review started: May 4, 2018

First decision: May 23, 2018

Revised: June 8, 2018

Accepted: June 25, 2018

Article in press: June 25, 2018

Published online: August 14, 2018

Abstract**AIM**

To elucidate tongue coating microbiota and metabolic differences in chronic hepatitis B (CHB) patients with yellow or white tongue coatings.

METHODS

Tongue coating samples were collected from 53 CHB

patients (28 CHB yellow tongue coating patients and 25 CHB white tongue coating patients) and 22 healthy controls. Microbial DNA was extracted from the tongue samples, and the bacterial 16S ribosomal RNA gene V3 region was amplified from all samples and sequenced with the Ion Torrent PGM™ sequencing platform according to the standard protocols. The metabolites in the tongue coatings were evaluated using a liquid chromatography-mass spectrometry (LC-MS) platform. Statistical analyses were then performed.

RESULTS

The relative compositions of the tongue coating microbiotas and metabolites in the CHB patients were significantly different from those of the healthy controls, but the tongue coating microbiota abundances and diversity levels were not significantly different. Compared with the CHB white tongue coating patients, the CHB yellow tongue coating patients had higher hepatitis B viral DNA (HBV-DNA) titers (median 21210 *vs* 500, respectively, $P = 0.03$) and a significantly lower level of Bacteroidetes (20.14% *vs* 27.93%, respectively, $P = 0.013$) and higher level of Proteobacteria (25.99% *vs* 18.17%, respectively, $P = 0.045$) in the microbial compositions at the phylum level. The inferred metagenomic pathways enriched in the CHB yellow tongue coating patients were mainly those involved in amino acid metabolism, which was consistent with the metabolic disorder. The abundances of bacteria from Bacteroidales at the order level were higher in the CHB white tongue coating patients (19.2% *vs* 27.22%, respectively, $P = 0.011$), whereas Neisseriales were enriched in the yellow tongue coating patients (21.85% *vs* 13.83%, respectively, $P = 0.029$). At the family level, the abundance of Neisseriaceae in the yellow tongue patients was positively correlated with the HBV-DNA level but negatively correlated with the S-adenosyl-L-methionine level.

CONCLUSION

This research illustrates specific clinical features and bacterial structures in CHB patients with different tongue coatings, which facilitates understanding of the traditional tongue diagnosis.

Key words: 16S rRNA gene sequencing; Metabolomics; Chronic hepatitis B; Tongue diagnosis; Microbiota

© The Author(s) 2018. Published by Baishideng Publishing Group Inc. All rights reserved.

Core tip: Tongue diagnosis has important guiding significance for clinical syndrome differentiation and drug use in traditional Chinese medicine (TCM), but lacks scientific explanations. This study illustrates the existence of specific clinical features and bacterial structure in chronic hepatitis B (CHB) patients with different tongue coatings. Compared with the CHB white tongue coating patients, the yellow tongue coating patients had higher viral titers and a significantly lower level of Bacteroidetes and higher level of Proteobacteria in their microbial compositions at the phylum level. This study explores the micro-features

between different tongue coatings, which will promote our understanding of the TCM tongue diagnosis and facilitate therapeutic strategies for individualized treatment.

Zhao Y, Mao YF, Tang YS, Ni MZ, Liu QH, Wang Y, Feng Q, Peng JH, Hu YY. Altered oral microbiota in chronic hepatitis B patients with different tongue coatings. *World J Gastroenterol* 2018; 24(30): 3448-3461 Available from: URL: <http://www.wjgnet.com/1007-9327/full/v24/i30/3448.htm> DOI: <http://dx.doi.org/10.3748/wjg.v24.i30.3448>

INTRODUCTION

Tongue diagnosis is a characteristic diagnostic method of traditional Chinese medicine (TCM) with a long history. TCM believes that the tongue is an important window for changes in the body, which are closely related to the *zang* and *fu* (internal organs), meridians, *qi* and *xue* (blood) and *body fluids*. Therefore, changes of the tongue can help doctors distinguish syndromes and guide diagnoses, which has great significance for clinical treatment *via* TCM. Different tongue coating colors in TCM have different treatment principles. Tongue diagnosis has the advantages of convenience and intuitiveness and represents first-hand information for TCM doctors that should not be neglected. However, the physiological and pathological changes that contribute to the TCM tongue diagnosis have not been elucidated. According to TCM theory, the formation of tongue coating is closely related to *wei-qi* (spleen and stomach). Reports have noted that micro-ecological changes in the local flora are important manifestations of pathological tongue images^[1]. As part of the human microbiome, the oral microbiota can interfere with the gut microbiota and is associated with multiple diseases^[2]. The microbiota can produce metabolites and active ingredients that participate in the regulation of host metabolism and immunity and is closely related to the pathological processes of many diseases. Some reports have found abnormalities in the microbiota or metabolites in pathological tongue coatings^[3,4]. However, integrated analyses of the pathological tongue coating microbiotas and metabolites have rarely been reported. As an important diagnostic factor, elucidating the "intension" of the material basis of tongue coatings and providing the scientific basis for individualized treatment and clinical syndrome differentiation have great significance in TCM.

Chronic hepatitis B (CHB) is a major infectious disease that may lead to liver cirrhosis and hepatocellular carcinoma (HCC). In China, CHB is a huge health burden, and 60% and 80% of China's liver cirrhosis and HCC patients, respectively, are infected with hepatitis B virus (HBV)^[5]. Intestinal bacteria are widely involved in the pathogenesis of chronic liver diseases, which can affect liver homeostasis based on energy absorption and storage, interfere with bile metabolism, participate in immune regulation and affect other processes^[6].

Some studies have shown that dysbiosis of the oral microbiota may be involved in the development of HBV-induced chronic liver disease. Moreover, key oral-derived phylotypes may invade the gut as opportunistic pathogens and alter the composition of the gut microbiota, and cirrhotic patients have a more limited salivary defenses and worse inflammation than healthy patients^[7]. In China, many patients with chronic liver disease are treated with TCM, which has been reported to decrease the incidence of liver cancer in a recent 15-year follow-up study of 21020 newly diagnosed CHB patients^[8]. Changes in the tongue are important for TCM diagnoses^[9,10], and CHB patients have different tongue coating phenotypes, which most commonly manifested as a yellow or a white tongue coating. These tongue coatings lead to different treatment strategies in TCM. Therefore, we speculate that microbiota differences may exist between CHB patients with different tongue coatings.

In this study, we characterize the microbiota and metabolic compositions of CHB patients with yellow or white tongue coatings and investigate the association between the tongue coating microbiotas, metabolites and host physiological indices to elucidate the differences between CHB patients with yellow and white tongue coatings. These results will contribute to our understanding of the relationship between the tongue coating appearance and the microbiota and metabolic micro-features differences.

MATERIALS AND METHODS

Patients

All samples from this study were collected at the Shanghai University of TCM-affiliated Shuguang Hospital in Shanghai, the Nanjing Second Hospital and the Huai'an Fourth People's Hospital in Jiangsu province, People's Republic of China, from 2013 to 2014. The criteria used for the diagnosis of CHB were from the "The Guidelines for the Prevention and Treatment of Chronic Hepatitis B (2010 version)" issued by the Chinese Society of Liver Diseases and the Chinese Society of Infectious Diseases. Healthy age- and gender-matched control subjects were recruited from the Shanghai University of TCM-affiliated Shuguang Hospital Medical Center. We excluded patients who had been on absorbable antibiotics within the past 3 mo; were undergoing periodontal disease treatment; had other viral liver hepatitis, liver cirrhosis, or HCC; were pregnant or lactating women; or had other severe primary diseases. Informed written consent was obtained before the participants' enrollment. This project was approved by the IRB of Shuguang Hospital, which was affiliated with the Shanghai University of TCM (Permit Number: 2012-206-22-01) and conformed to the ethical guidelines of the Declaration of Helsinki (2008).

Sample collection

Each subject underwent serum and tongue coating

collection on the same day in the morning before breakfast. For tongue coating collection, all participants were required to rinse their mouth with physiological saline and then were photographed with the tongue diagnostic information acquisition system in a stable light source (Daosh Co., Shanghai, China). Sterile spoons scraped the fixed parts of the tongue surface twice to collect tongue coating samples, which were dissolved in sanitized Eppendorf tubes filled with 2 mL of physiological saline^[4]. Spare samples were stored in a -80 °C freezer. Blood samples were taken for clinical analyses after an overnight fast of at least 10 h.

Biochemical measurements

Clinical and biochemical indices were determined for each patient, including the following: (1) liver and kidney function, including serum alanine aminotransferase (ALT), aspartate aminotransferase (AST), alkaline phosphatase (ALP), γ -glutamyl transpeptidase (GGT), total bilirubin (TBIL), direct bilirubin (DBIL), albumin (ALB), globulin (GLB), creatinine (Cr), blood urea nitrogen (BUN) and uric acid (UA); (2) lipid profiles, including triglycerides (TG), total cholesterol (TC), high-density lipoprotein (HDL) and low-density lipoprotein (LDL); (3) clotting function, including the prothrombin time (PT); and (4) virological indicators, including hepatitis B surface antigen (HBsAg), hepatitis B surface antibody (HBsAb), hepatitis Be antigen (HBeAg), hepatitis Be antibody (HBeAb), hepatitis B core antibody (HBcAb) and the HBV-DNA titers were determined for each patient.

Tongue coating microbial diversity analysis

DNA extraction and PCR amplification: Microbial DNA was extracted from the tongue samples using a QIAGEN QIAamp DNA Stool Mini Kit (50) according to manufacturer's protocols. The V3 region of the bacterial 16S ribosomal RNA (rRNA) gene was amplified by PCR (95 °C for 2 min, followed by 25 cycles at 95 °C for 30 s, 55 °C for 30 s and 72 °C for 30 s and a final extension at 72 °C for 5 min) using the primers 341F (5'-CCTACGGGAGGCAGCAG-3') and 518R (5'-ATTACCGGCTGCTGG-3'), which included a barcode that was an eight-base sequence unique to each sample. The PCR reactions were performed in triplicate with a 20 μ L mixture containing 4 μ L of 5 \times FastPfu buffer, 2 μ L of 2.5 mmol/L dNTPs, 0.8 μ L of each primer (5 μ mol/L), 0.4 μ L of KAPA HiFi Polymerase, and 10 ng of template DNA.

Ion Torrent PGM™ sequencing: Amplicons were extracted from 2% agarose gels, purified using the AxyPrep DNA Gel Extraction Kit (Axygen Biosciences, Union City, CA, United States) according to the manufacturer's instructions and then quantified using the Qubit 2.0 Fluorometer (Invitrogen, United States). Purified amplicons were pooled at equimolar concentrations and sequenced on an Ion Torrent PGM™ platform according to standard protocols. The raw reads were deposited

into the NCBI Sequence Read Archive (SRA) database (Accession Number: SRP127002).

Processing of sequencing data: Raw FASTQ files were demultiplexed and quality-filtered using the fastx_Toolkit (version 0.0.13.2) with the following criteria. The 200 bp reads were truncated at any site receiving an average quality score < 20, and truncated reads that were shorter than 50 bp were discarded. Operational taxonomic units (OTUs) were clustered with 97% similarity cutoff using UCHIME (version 7.1 <http://drive5.com/uparse/>), with also identified and removed chimeric sequences. The taxonomy of each 16S rRNA gene sequence was analyzed using the RDP Classifier (<http://rdp.cme.msu.edu/>) against the SILVA (SSU123) 16S rRNA database with a confidence threshold of 70%^[11].

Metabolomic profiling of human tongue coating samples

Sample preparations: The tongue coating samples were thawed on ice, and quality control (QC) samples were made by mixing and blending equal volumes (20 µL) of each sample. A 100 µL aliquot of the samples was added to 500 µL of 100% methanol, which was vibrated for 30 s and centrifuged at 15000 *g* for 10 min. The supernatant was dried in a vacuum centrifuge at 30 °C. The dried samples were dissolved in 300 µL of water/methanol (1:1, 4 °C) and filtered through a 0.22 µm membrane. A 3 µL aliquot of tongue coating was injected for LC-MS analysis, and another 100 µL was sampled for subsequent MS/MS identification.

LC-MS experiments: A Waters ACQUITY UPLC system analysis was performed on an ACQUITY UPLC® HSS T3 column (150 mm × 2.1 mm, 1.8 µm particle size; Waters Corporation, Milford, MA, United States) for separation of samples using a binary gradient mode. The sample was eluted with a gradient mobile phase composed of 0.1% (v/v) formic acid/water (A) and 0.1% (v/v) formic acid/acetonitrile (B) as follows: 0–1 min, 2% B; 1–11 min, linear increase from 2 to 50% B; 11–17 min, linear increase from 50 to 98% B; 17–18 min, 98% B; 18–19 min, linear decrease from 98 to 2% B and 19–20 min, 2% B. The flow rate was set to 0.3 mL/min. The column and sample-tray temperatures were maintained at 35 and 8 °C, respectively.

A Thermo Scientific™ LTQ XL™ mass spectrometer (Thermo Scientific, San Jose, CA, United States) was combined with electrospray ionization (ESI) operating in both the negative and positive ion modes. The positive ionization mode was operated using a spray voltage of 4.8 kV, and the negative ionization mode used a spray voltage of 4.50 kV. The capillary temperature was 325 °C, and the sheath gas and auxiliary gas were set at flow rates of 45 and 10 L/min, respectively. The mass scanning range was set at 89–1000 *m/z* in positive ionization mode and 87–1000 *m/z* in negative ionization mode.

Data processing and metabolite identification: The raw LC-MS data files were converted into the mzXML

format and then analyzed by the XCMS program in the R statistical language (v3.1.1) for peak identification, filtering and alignment. For the subsequent multivariate linear regression analysis, the XCMS results were ultimately converted into two-dimensional data matrices that consisted of retention time (Rt)-*m/z* pairs and their peak area. The data were normalized by their sum peak areas, and 1043 positive ion mode variables and 540 negative ion mode variables were finally obtained for the subsequent analysis.

Metabolites driving the differences among the 3 groups were filtered with a variable importance (VIP) > 1, a correlation *P*(corr) > 0.4, and a threshold of 1 using the 7-fold cross-validated partial least squares-discriminant analysis (PLS-DA) model. By using retention time-*m/z* pairs as the identifiers for each ion, we examined and optimized the parameters individually. The possible identities of the metabolites were first confirmed based on their exact molecular weights (molecular weight error < 15 ppm), followed by the comparison of their exact molecular weight and MS/MS fragmentation patterns to entries in the Human Metabolome Database (HMDB) (<http://www.hmdb.ca>) and the METLIN (<https://metlin.scripps.edu>), MassBank (<http://www.massbank.jp>) and mzCloud (<https://www.mzcloud.org>) databases.

Statistical analysis

We compared the clinical difference among the 3 groups using the Kruskal-Wallis test and the Nemenyi test was used for post-pairwise comparisons. The HBV-DNA titers between the CHB yellow and white tongue coating patients and the metabolites differences between the CHB and the healthy controls were compared using the standard non-parametric Mann-Whitney *U* test. Unsupervised principal component analysis (PCA) and supervised PLS-DA analysis were performed using the Simca-P software (version 13.0, Umetrics, Umea, Sweden). The microbiota results were analyzed using Metastats analysis, the Kruskal-Wallis test and the linear discriminant analysis (LDA) effect size (LEfSe) method was implemented in LEfSe v1.0^[12]. The functionality of the microbiota was assessed using PiCRUST^[13] and compared among the groups. The metabolomics enrichment analysis was performed using MetaboAnalyst 3.0^[14] (<http://www.metaboanalyst.ca>). We correlated the microbiota with clinical index and metabolites and visualized the results with a Spearman's correlation coefficient > 0.3 and *P* < 0.05 in Cytoscape (version 3.6.0).

RESULTS

Physiological characteristics

A total of 75 subjects, including 22 healthy subjects and 53 CHB patients, were enrolled in this study. Twenty-eight of the 53 CHB patients exhibited a yellow tongue coating, and 25 CHB patients exhibited a white tongue coating; their physiological characteristics are shown in Table 1. The ages, genders and body mass indices (BMIs) did not significantly differ among the groups. The CHB group had a significantly higher level of liver function,

Table 1 Physiological characteristics of the subjects

	Healthy	CHB patients		P value
		White tongue coating	Yellow tongue coating	
Age	34.09 ± 7.16	34.46 ± 9.92	38.08 ± 9.89	0.255
Gender, male/female	13/9	21/7	17/8	0.488
BMI (kg/m ²)	21.22 (16.61-25.56)	23.44 (18.42-31.64)	23.30 (18.37-45.67)	0.077
Antiviral drugs (%)	/	78.60%	64%	0.24
Chinese herbs (%)	/	17.90%	28%	0.378
TBIL (μmol/L)	14.87 (8.29-31.62)	12.85 (7.9-27.7)	17.27 (6.4-45.6)	0.27
DBIL (μmol/L)	3.065 (1.7-6.76)	3.9 (1.64-9.2)	4.8 (2.05-34.7) ^b	0.006
IDBIL (μmol/L)	11.6 (6.3-25.7)	8.95 (5-18.7)	10.2 (4.2-19.6)	0.282
ALT (IU/L)	15 (10-34)	28.75 (8.5-170) ^b	47 (11.1-533) ^c	< 0.001
AST (IU/L)	17.5 (11-31)	27 (12-133) ^b	38 (14.8-543) ^c	< 0.001
ALP (IU/L)	15.28 (9-52)	25.8 (10.01-98)	38 (8.6-274) ^c	< 0.001
GGT (IU/L)	70.5 (35-119)	72.7 (37.1-131)	76.3 (41.7-202)	0.62
ALB (g/L)	44.97 (40.89-50.77)	48.7 (43.1-56.3) ^{ad}	46 (36.6-50.1)	0.003
PT (s)	12.55 (11.3-13.9)	12.7 (11.1-16.4)	13.3 (11.3-16)	0.032
HBV-DNA (IU/mL)	/	500 (500-44830000) ^d	21210 (500-324100000)	0.03
BUN (mmol/L)	4.39 (2.97-6.39)	4.96 (2.96-8.9)	4.2 (2.4-7.28)	0.074
Gr (μmol/L)	72.355 (45.1-106.67)	70 (27.4-96.7)	69 (35.9-83)	0.449
UN (μmol/L)	305.5 (201-406)	325 (207-550)	294 (154-429)	0.204
FPG (mmol/L)	5.2 (3.96-5.63)	5.2 (4.29-7.09)	5.215 (4.07-15.54)	0.532
TC (mmol/L)	4.04 (0.37-6.34)	4.55 (3.15-6.52)	4.36 (3.1-6.74)	0.102
TG (mmol/L)	0.84 (0.37-1.91)	1.17 (0.58-3.31) ^a	1.11 (0.68-2.62) ^a	0.008
HDL (mmol/L)	1.14 (0.74-1.76)	1.145 (0.72-1.86)	1.07 (0.58-2.02)	0.779
LDL (mmol/L)	2.205 (1.38-5.04)	2.27 (1.47-3.8)	2.44 (1.12-3.73)	0.647
APOA-A (g/L)	1.175 (0.85-1.62)	1.08 (0.76-1.91) ^c	1.02 (0.71-1.42) ^c	0.013

Quantitative results are expressed as median with minimum and maximum into brackets. The *P* values indicate the significance of difference among groups, and the Kruskal-Wallis test for 3 groups and Nemenyi test were used for post pairwise comparisons. The HBV-DNA titers between the chronic hepatitis B (CHB) yellow and white tongue coating patients were compared using the standard non-parametric Mann-Whitney *U* test. The antiviral drugs usage and the Chinese herbs usage were compared between CHB yellow and white tongue coating patients using the Chi-square test. ^a*P* < 0.05 *vs* healthy controls, ^b*P* < 0.01 *vs* healthy controls, ^c*P* < 0.001 *vs* healthy controls, ^d*P* < 0.05 *vs* CHB yellow tongue coating patients.

including ALT, AST and GGT activity. The CHB yellow tongue coating patients had a trend toward higher TBIL, DBIL, ALT, AST, ALP, GGT and PT levels. Additionally, the HBV viral titer was significantly higher in yellow tongue coating patients than in the white coating patients (*P* = 0.03), whereas the ALB level was lower in the yellow tongue coating patients (*P* = 0.003).

Overview of tongue coating microbial differences among the patients

In this study, the qualified sequences were rarefied to 9300 sequences per sample for downstream analysis. A summary is shown in Supplementary Table 1, Good's coverage values were high in the three groups, indicating that the sequencing depth was sufficient for investigation. As shown in Figure 1A show, the oral microbiota abundance and diversity level did not significantly differ between the CHB patients and the healthy controls. A PCA plot based on the OTU distributions showed that the overall compositions of the tongue coating microbiota were not significantly shifted by age, gender, BMI and antiviral treatment (Supplementary Figure 1). However, the PLS-DA plot showed a clear separation between the CHB patients and the healthy groups, and the CHB yellow tongue coating and white tongue coating patients were also well separated (Figure 1B). A Venn diagram showed that 1569 OTUs were common in all samples and that 705 and 741 OTUs were unique to the

CHB yellow tongue coating and white tongue coating patients, respectively (Figure 1C). Most of the tongue coating microbiota were assigned to the Firmicutes, Bacteroidetes, Proteobacteria, Actinobacteria and Fusobacteria phyla (relative abundance > 1% of the total DNA sequences, Figure 2A). In total, 112 genera were classified, and most of the genera were present in low abundance in the oral microbiota samples.

A Metastats analysis was used to detect differentially abundant features at different taxon levels. Compared with the white tongue patients, the relative abundance of Bacteroidetes was decreased in the CHB yellow tongue coating patients, whereas the abundance of Proteobacteria and Gracilibacteria were increased (Figure 2B). At the family level, Neisseriaceae and Gracilibacterium_bacterium_oral_taxon_873 were dominant in the CHB yellow tongue coating and had prevalent differences compared with the abundances in the healthy controls and CHB white tongue coating patients, whereas SR1_bacterium_canine_oral_taxon_380 was decreased. At the genus level, *Neisseria* and *Gracilibacterium_bacterium_oral_taxon_873* were enriched in the CHB yellow tongue coating samples compared with the healthy controls and the CHB white tongue coating patients. The relative abundance of *Actinomyces*, *Porphyromonas*, *Bergeyella*, *Centipeda*, *Alysiella*, *Bulleidia*, *Candidatus_Saccharibacter*, *ia_bacterium_UB2523* and *Pseudoramibacter* in the CHB white tongue coating samples were significantly different

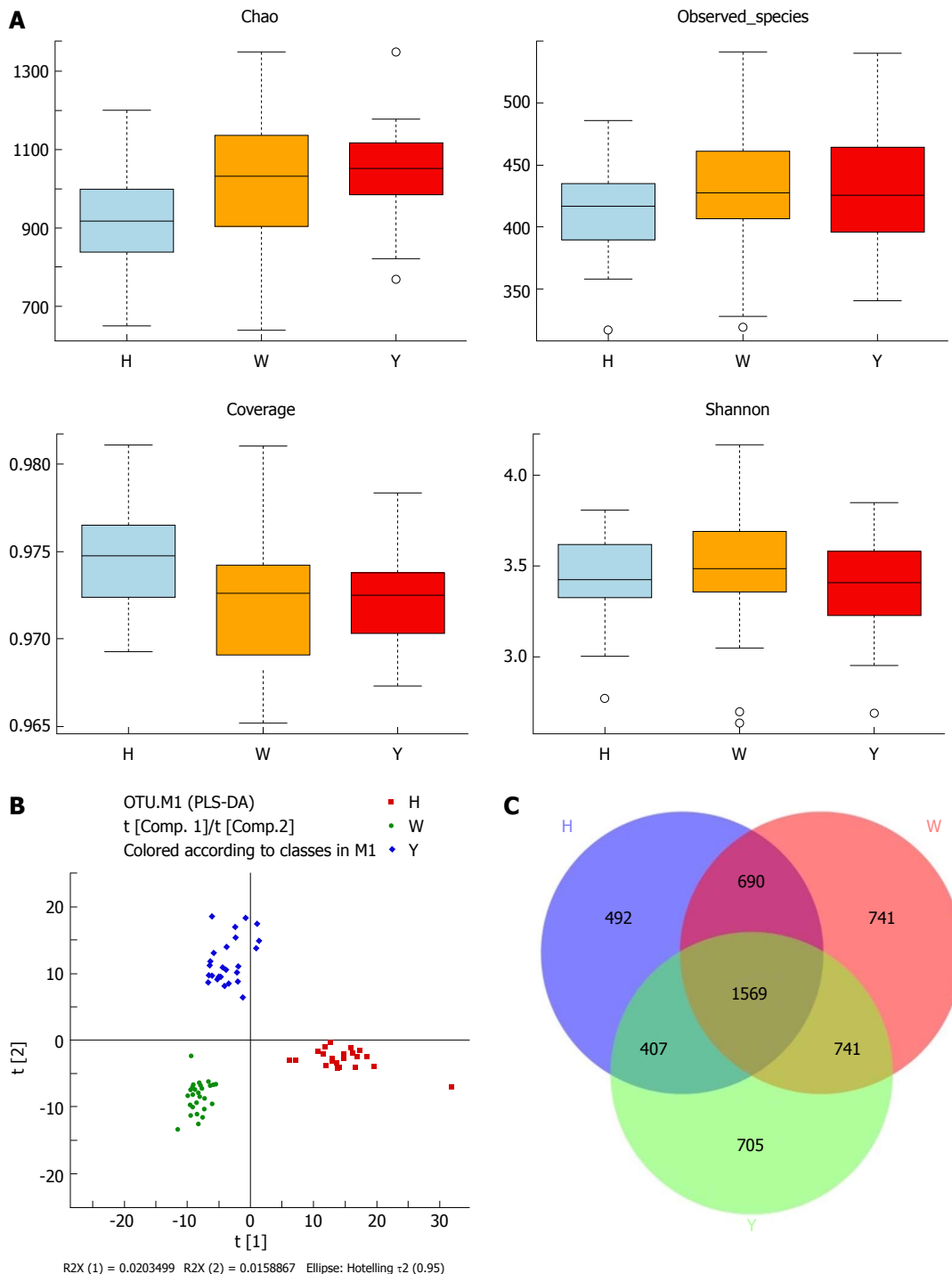


Figure 1 Overview of the tongue coating microbiota among groups. A: Detailed characteristics of alpha diversity; B: PLS-DA discriminant analysis plot; C: Venn diagram based on OTUs. PLS-DA: Partial least squares-discriminant analysis; OTUs: Operational taxonomic units.

from those of the healthy controls, but no differences were found compared to the abundances of the CHB yellow tongue coating patients (Figure 3A). We used LEfSe to identify the specific OTUs associated with each group. A cladogram representative of the structure of the tongue coating microbiotas in the CHB yellow tongue coating and CHB white tongue coating patients and the healthy controls is shown in Figure 3B. According to the LDA values ($\log_{10}^{\text{LDA score}} > 4$), the tongue coating bacteria with advantages in the CHB yellow tongue coating

were Betaproteobacteria, Neisseriales, Neisseriaceae, Proteobacteria and *Neisseria*, the CHB white tongue coating samples were dominated by Bacteroidia and Bacteroidales, and the healthy controls were dominated by Actinomycetaceae, Actinomycetales and *Actinomyces* (Figure 3C).

Predicted microbial function

The gene functions in the tongue coating microbiotas were predicted by PICRUSt, and the results were com-

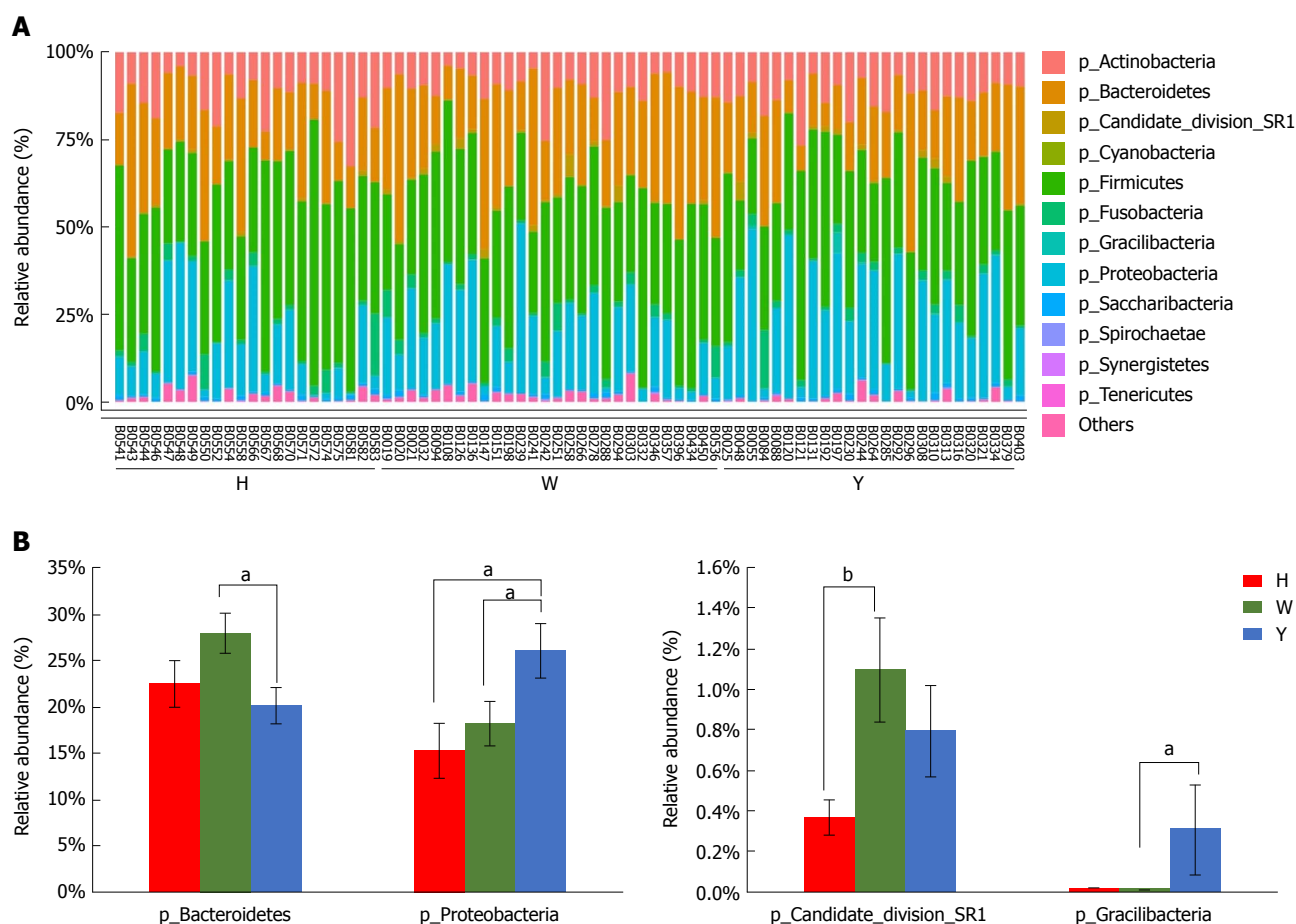


Figure 2 Taxonomic classification of the tongue coating microbiota at the phylum level. A: Taxonomic classification of the tongue-coating microbiota at the phylum level; B: Metastats analysis of differences in the relative proportions difference at the phylum level. ^a $P < 0.05$, ^b $P < 0.01$.

pared between groups (Figure 4). Microbes with greater relative abundances in the healthy controls had functions that were most related to carbohydrate metabolism (fructose and mannose metabolism). The microbiotas in the white tongue coatings were more likely than those in the yellow tongue coatings and healthy controls to have functionality related to genetic information processing, including the level-2 functionality of replication and repair (DNA replication proteins, homologous recombination and mismatch repair) and transcription (transcription machinery, ribosome and translation factors). In contrast, the microbiotas in the yellow tongue coatings were probably related to amino acid metabolism (alanine aspartate and glutamate metabolism, arginine and proline metabolism, cysteine and methionine metabolism, lysine biosynthesis, phenylalanine tyrosine and tryptophan biosynthesis, phenylalanine metabolism, tyrosine metabolism and valine leucine and isoleucine biosynthesis), membrane transport (bacterial secretion system and secretion system) and cell motility (bacterial motility proteins).

Metabolites in the tongue coatings

The typical total ion chromatograms (TICs) of the samples run in positive ion modes are shown in supplementary Figure 2A. Because the PCA did not distinguish

the groups well, the supervised PLS-DA model was used for further analysis and resulted in good separation of the CHB patients and healthy volunteers, however, the CHB yellow tongue coating and the white tongue coating patients were not completely distinguished (Supplementary Figure 2B). A total of 21 endogenous compounds were obtained with a VIP > 1 and $P(\text{corr}) > 0.4$ in the PLS-DA model (Table 2). The presence of 6 compounds differed between the CHB patients and healthy subjects ($P < 0.05$), and these compounds were mainly involved in histidine metabolism and methylhistidine metabolism ($P < 0.05$, Supplementary Figure 3). The metabolites were not significantly different between the CHB yellow and white tongue coating patients, but the number of amino acid metabolites was greater in the CHB yellow tongue coating patients than in the white tongue coating patients.

Associations of the tongue coating microbiotas with metabolites and clinical indices

To better understand the relationships among the tongue coating microbiota, metabolites and clinical indicators, we performed a correlation analysis of the differential microbiota at the family level with the metabolites and clinical indicators and constructed the related network ($|\text{correlation } r| > 0.3$, $P < 0.05$). The abundance of

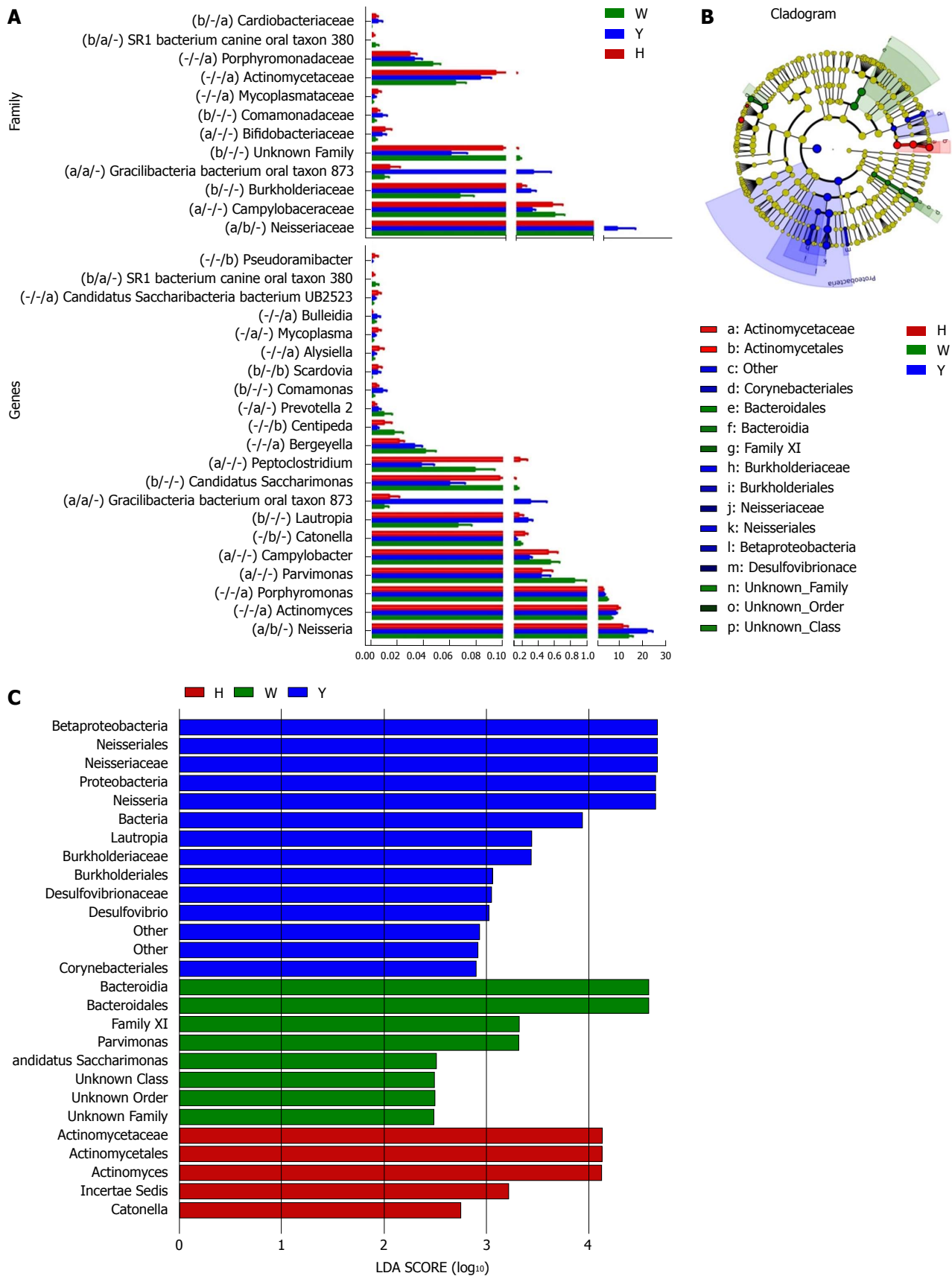


Figure 3 The most differentially abundant taxa in the chronic hepatitis B yellow and white tongue coating patients. A: Comparison of the relative abundance at the bacterial family and genus levels, the marks of significance from left to right in parentheses are the CHB yellow tongue coating patients vs the healthy controls, the CHB yellow tongue coating patients vs the CHB white tongue coating patients and the CHB white tongue coating patients vs the healthy controls. ^a $P < 0.05$, ^b $P < 0.01$, “-” indicates no significant difference based on the Metastats analysis; B: Taxonomic cladogram of the LEfSe analysis of the 16S sequences. (Red) healthy-control enriched taxa; (Green) CHB white tongue coating patients-enriched taxa; and (Blue) CHB yellow tongue coating patients-enriched taxa. C: LDA scores of enriched taxa in the healthy controls (Red), CHB white tongue coating patients (Green) and CHB yellow tongue coating patients (Blue). LDA: Linear discriminant analysis.

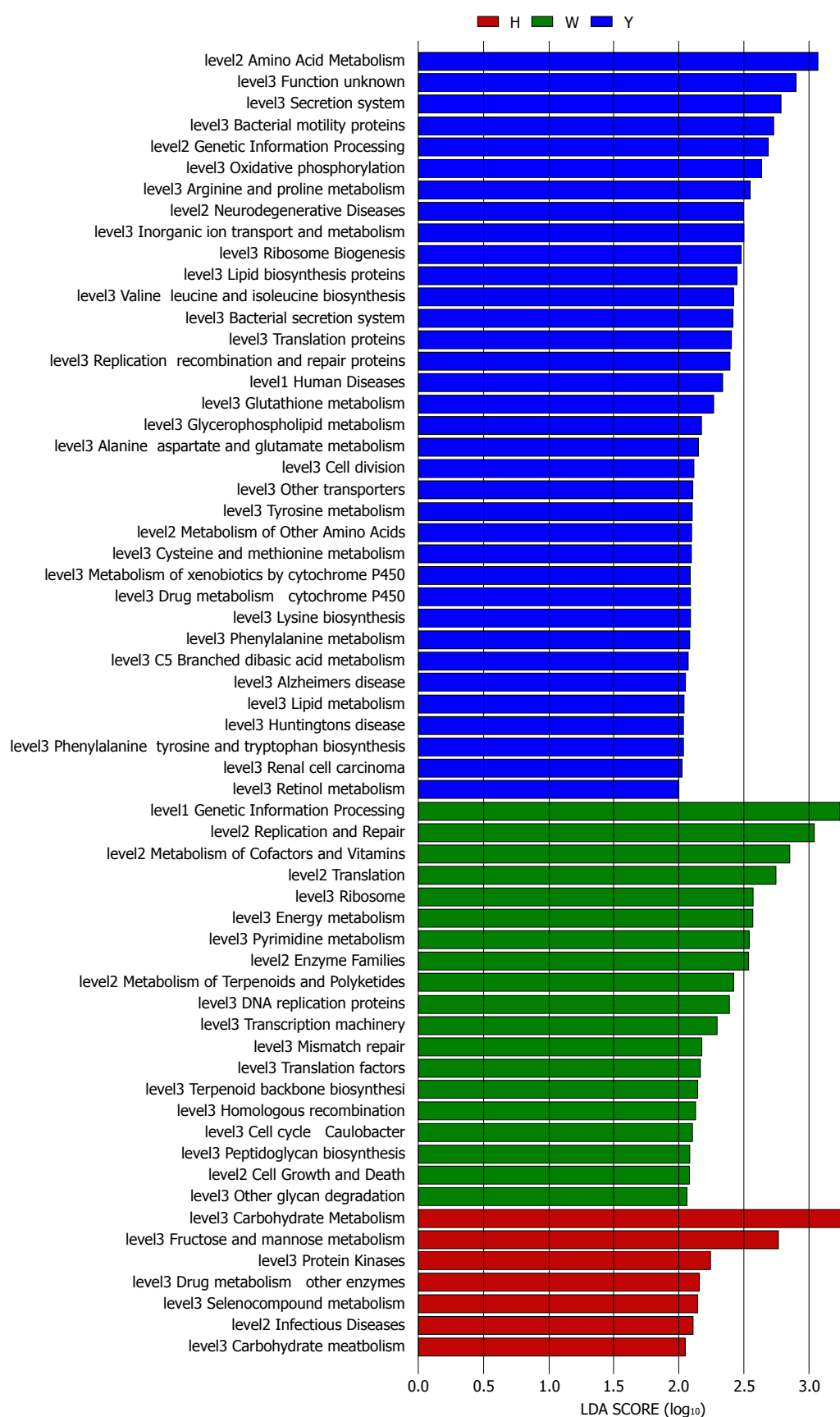


Figure 4 Linear discriminant analysis scores of the enriched microbial functions in the healthy-controls (Red), chronic hepatitis B white tongue coating patients (Green) and chronic hepatitis B yellow tongue coating patients (Blue). LDA: Linear discriminant analysis.

Table 2 Metabolites detected in the tongue coatings

Metabolites	Formula	Rt (min)	Type	KEGG compounds	VIP	P (corr)	CHB V/S H P value	FC	Healthy	CHB White tongue coating	CHB Yellow tongue coating
L-Proline	C ₅ H ₉ NO ₂	83.3392	[M+H] ⁺	C00148	1.04	-0.68	0.134	1.473	1.01 (0.13-12)	3 (0.16-20.14)	3.88 (0.09-15.28)
L-Valine	C ₆ H ₁₁ NO ₂	120.7915	[M+H] ⁺	C00183	1.07	-0.76	0.081	1.608	2.92 (0.82-17.97)	3.98 (1.13-38.65)	7.44 (1.08-31.3)
L-Isoleucine	C ₆ H ₁₃ NO ₂	194.3545	[M+H] ⁺	C00123	1.15	-0.81	0.069	1.641	5.55 (0.43-30.81)	7.23 (1.23-58.36)	13.28 (0.22-45.18)
L-Leucine	C ₆ H ₁₃ NO ₂	212.576	[M+H] ⁺	C00123	1.07	-0.81	0.029	1.715	8.9 (0.02-44.58)	14.65 (2.89-84.8)	21.6 (0.44-61.98)
Hypoxanthine	C ₅ H ₇ N ₄ O	154.305	[M+H] ⁺	C00262	1.07	-0.80	0.039	2.218	0.42 (0.01-6.93)	1.31 (0.05-17.87)	2.46 (0.01-14.33)
Urocanic acid	C ₆ H ₆ N ₂ O ₂	132.3225	[M+H] ⁺	C00785	1.00	-0.78	0.044	2.587	0.62 (0.07-4.46)	0.93 (0.08-12.84)	1.93 (0.08-13.92)
L-Lysine	C ₆ H ₁₁ N ₂ O ₂	64.124	[M+H] ⁺	C00047	1.01	-0.72	0.683	1.510	0.08 (0.05-0.28)	0.08 (0.03-0.81)	0.08 (0.03-0.65)
Glutamate	C ₅ H ₉ NO ₄	76.6581	[M+H] ⁺	C00025	1.04	-0.75	0.159	1.955	0.14 (0.02-1.17)	0.2 (0.2-9.9)	0.39 (0.2-5.2)
Methionine	C ₅ H ₁₁ NO ₂ S	131.208	[M+H] ⁺	C00073	1.16	-0.80	0.144	1.543	1.08 (0.01-7.21)	1.74 (0.13-10.21)	2.26 (0.9-7.5)
Xanthine	C ₅ H ₄ N ₄ O ₂	183.102	[M+H] ⁺	C00385	1.01	-0.73	0.151	2.058	0.09 (0.2-9.1)	0.24 (0.4-9.3)	0.47 (0.4-7.5)
L-Phenylalanine	C ₉ H ₉ NO ₂	277.369	[M+H] ⁺	C00079	1.17	-0.82	0.069	1.534	6.72 (0.83-24.15)	11.07 (1.84-51.35)	13.1 (0.31-36.18)
Glycyl-L-Valine	C ₇ H ₁₂ N ₂ O ₃	205.364	[M+H] ⁺	C00327	1.07	-0.70	0.078	1.548	0.07 (0.1-1)	0.15 (0.0-8.4)	0.19 (0.1-3.8)
Citrulline	C ₆ H ₁₃ N ₃ O ₃	77.3246	[M+H] ⁺	C00082	1.16	-0.74	0.216	1.486	0.12 (0.1-2.8)	0.14 (0.01-1.7)	0.3 (0.1-3.8)
L-Tyrosine	C ₉ H ₉ NO ₃	204.441	[M+H] ⁺	C00082	1.17	-0.81	0.095	1.512	2.63 (0.33-11.35)	4.36 (0.71-22.15)	5.67 (0.1-16.28)
Benzophenone	C ₁₄ H ₁₀ O	882.111	[M+H] ⁺	C06354	1.19	0.81	<0.001	0.752	0.25 (0.16-0.3)	0.19 (0.1-0.3)	0.18 (0.07-0.25)
L-Tryptophan	C ₁₁ H ₁₂ N ₂ O ₂	338.856	[M+H] ⁺	C00078	1.03	-0.74	0.23	1.940	0.57 (0.09-3.63)	0.74 (0.07-12.67)	1.11 (0.1-9.81)
12-Hydroxylauric acid	C ₁₂ H ₂₂ O ₄	906.316	[M+H] ⁺	C08317	1.12	0.72	<0.001	0.697	10.81 (8.25-16.18)	7.3 (0.08-12.49)	7.61 (0.08-14.08)
N-Acetyl-D-glucosamine	C ₈ H ₁₅ NO ₆	82.3978	[M+H] ⁺	C03878	1.02	-0.39	0.936	0.942	0.04 (0.0-0.46)	0.48 (0.2-0.81)	0.07 (0.0-0.44)
L-cystathionine	C ₄ H ₁₀ N ₂ O ₃ S	836.2685	[M+H] ⁺	C02291	1.10	0.67	0.24	0.919	0.48 (0.31-0.79)	0.48 (0.2-0.81)	0.43 (0.22-0.66)
S-adenosyl-L-methionine	C ₁₅ H ₂₄ N ₆ O ₆ S	66.1963	[M+H] ⁺	C00019	1.02	0.79	0.029	0.888	9.98 (8.09-12.77)	9.2 (4.71-12.09)	8.58 (4.98-14.58)
Guanosine	C ₁₀ H ₁₃ N ₅ O ₅	230.687	[M+H] ⁺	C00387	1.01	0.02	0.824	0.763	3.02 (0.55-14.19)	2.98 (0.10-2.7)	3.52 (0.10-8.9)

Neisseriaceae, which was the dominant bacterial family in the CHB yellow tongue coating, was positively correlated with the serum HBV-DNA, TC, L-leucine, hypoxanthine, urocanic acid and methionine levels but negatively correlated with thebenzophenone and S-adenosyl-L-methionine levels. Another relatively abundant member of the microbiota in the CHB yellow tongue coating (Gracilbacteria_bacterium_oral_taxon_873) was positively correlated with the guanosine and BUN levels but negatively correlated with the S-adenosyl-L-methionine level (Figure 5).

DISCUSSION

Chinese medicine theory believes that tongue demonstration is a window of body change and that the oral microbiome is an integral part of the whole body's microbiome. Indeed, an increasing number of studies have found that many diseases, including atherosclerosis^[15], rheumatoid arthritis^[16], diabetes^[17] and liver cirrhosis^[18], are accompanied by disorder of the oral and intestinal microbiotas. Although the oral and gut communities share little taxonomic resemblance, the oral and intestinal microflora have general dynamic characteristics^[19], the oral bacterial populations seed the gut^[20], and the observed bacterial structures in the oral cavity or intestine can predict each other^[21]. Because tongue diagnosis has the advantages of intuition and simplicity, some scholars have recently discovered the importance of the tongue image for the diagnosis and prognostic prediction of diseases^[22,23]. The oral microbiota varies according to the different sampling sites with a high diversity^[24], but as the tongue texture and tongue color form an important basis for diagnosis and treatment in TCM^[25]. The treatments adopted for patients with white and yellow tongue coatings are different, thus, the tongue coating oral microbiotas were selected for analysis in our study, and the samples were grouped by the color of the tongue coating.

The complex and dynamic interactions between microbes and hosts are very important for maintaining homeostasis because microbiome dysbiosis may interact with the host's immune system and influence the degree of hepatic steatosis, inflammation and fibrosis^[26]. Our recent study found that the gut microbiota was significantly altered in

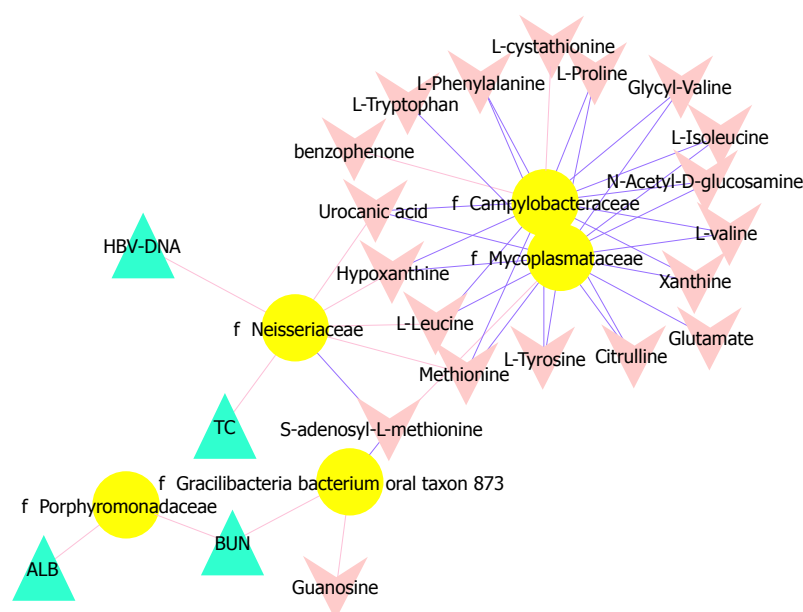


Figure 5 Associations of the tongue coating microbiotas with metabolites and clinical indices. Correlations were detected, and the indices with Spearman's correlation coefficients > 0.3 were visualized in Cytoscape. Triangles represent clinical indicators, arrows represent metabolites and dots represent oral microbial families. If the correlations are negative, the connecting line is blue; if the correlation is positive, the connecting line is red. The line thickness represents the size of the correlation coefficient.

CHB patients with low Child-Pugh scores^[27]. Evidence is accumulating that the intestinal microbiome has good clinical prospects as a target for the treatment of chronic liver disease. Chinese scholars transplanted the intestinal flora of healthy volunteers into HBeAg-positive CHB patients with long-term antiviral treatment, and this approach showed a good effect on HBeAg seroclearance^[28]. However, few studies have been performed on the oral microbiotas in CHB patients. In one of the limited reports, Ling *et al.*^[29] noted the decreased diversity of the oral microbiotas in supragingival plaque samples from patients with HBV-induced chronic liver disease. However, in this study, the richness and diversity of the tongue coating did not differ between the CHB patients and healthy controls. Ren *et al.*^[30] used 16S rRNA gene pyrosequencing and metagenomic sequencing to examine oral microbial compositions and their functional variations in children with halitosis. They found that the tongue coatings of the subjects with halitosis had greater bacterial richness than those of the healthy subjects, but the number of OTUs and the Chao levels were slightly lower in the saliva samples from the subjects with halitosis than in the healthy subjects. The microbiotas among individuals and habitats are highly personalized in the oral cavity^[31]. Therefore, we concluded that the data differences in data might be due to the use of different sampling sites.

Taxonomic and predicted function differences were found between the CHB yellow and white tongue coating patients in the LEfSe analysis. The CHB yellow tongue coating patients had specific clinical and microbiota characteristics that were distinct from those of the white coating patients. First, the CHB patients with yellow tongue coatings had significantly higher viral titers but lower ALB levels than the white coating patients ($P <$

0.05). The remaining indicators of liver function, including TBIL, DBIL, ALT, AST, ALP, GGT and PT, exhibited elevated trend in the CHB yellow tongue coating patients. Because a yellow tongue is an important indicator for the diagnosis of CHB *damp heat* syndrome, the results are consistent with studies showing that the CHB *damp-heat* syndrome patients have higher ALT and AST levels^[32], which indicates that these patients have greater liver damage. The correlation analysis between bacteria and metabolites also confirmed this outcome. The relatively dominant bacterial families in the CHB yellow tongue coating (Neisseriaceae and Gracilibacteria_bacterium_oral_taxon_873) were negatively correlated with the S-adenosyl-L-methionine level. S-adenosyl-L-methionine, which is also known as SAM or AdoMet, is a donor in the methylation reactions of all mammalian cells but is found most abundantly in the liver. Patients with chronic liver disease have reduced AdoMet levels, and reduced hepatic AdoMet levels can contribute to the development of oxidative stress, steatohepatitis, and hepatocellular carcinoma (HCC)^[33]. In addition, according to TCM, a yellow tongue coating is a manifestation of TCM *hot* Syndrome, which has been reported to be involved in inflammation or an immune regulation imbalance in the host^[34,35]. Jiang *et al.*^[3] compared the yellow and white tongue coating microbiomes with those of gastritis patients and found that yellow dense tongue coating bacteria were associated with TCM *hot* syndrome-related inflammation such as halitosis, tonsil infection and periodontal inflammation. Therefore, we therefore hypothesized that the patients with CHB yellow tongue coatings might have had more inflammation, although this speculation requires further confirmation. Second, the yellow tongue coating subjects showed similarities at the phylum level with a gut disorder in patients

with cirrhosis, which was manifested as a reduced abundance of Bacteroidetes and increased Proteobacteria content^[18,26,36]. The LEfSe analysis suggested that Neisseriaceae was enriched in the yellow tongue coating patients and was positively correlated with the serum HBV-DNA level. Ling's research reported that members of Neisseriaceae were significantly more abundant in the oral microbiota of liver cirrhosis patients than in those of CHB patients^[29]. Lv *et al.*^[37] found that Neisseriaceae, which are opportunistic pathogens, were enriched in primary biliary cirrhosis (PBC) patients. Third, according to the LDA score, the inferred metagenomic pathways that were enriched in the CHB yellow tongue coating patients were mainly those involved in amino acid metabolism, and the detected metabolites were mainly essential amino acids, including L-proline, L-valine, L-isoleucine, L-leucine, L-lysine, glutamate and L-tryptophan, and were generally present in larger amounts trend in the yellow tongue coatings. The relationship between amino acid metabolism and the CHB patients with yellow tongue coatings is unclear, and relevant literature reports are limited. However, one report noted that people with the TCM *damp-heat* syndrome people with HBV-related chronic liver diseases, whom mainly manifested yellow greasy tongue coatings, had increased leucine, phenylalanine and valine expression in urinary metabolomic studies^[38], which indirectly explained the severe disordered amino acid metabolism in CHB patients with the yellow coating. Finally, this study found that membrane transport (secretion system) and cell motility (bacterial motility proteins) were enriched in the yellow coatings, which indicated that the CHB yellow coating patients might be more susceptible to bacterial colonization. The functional analysis of tongue coating flora and metabolites in CHB white tongue coating patients lacked correspondence, the underlying reason might be the microbiotas functionality in the CHB white tongue coating patients were most likely related to genetic information processing, which association with metabolites is relatively little.

Tongue diagnosis is a simple, non-invasive and valuable procedure that has been repeatedly verified by TCM clinical practitioners. We found that the yellow and white tongue coatings of CHB patients had microbiota compositional and functional differences in this study, but the sample sizes were small. In the future, we will expand the sample size to verify the results of this study. In addition, we will focus on the relationship between changes in the oral and intestinal microbiota in different tongue coating patients and explore the effects of oral microbiota variance on immunity and metabolic alterations in the body to further explain the modern theoretical mechanism of TCM tongue diagnosis. These studies will facilitate the development of therapeutic strategies for individualized treatment.

ARTICLE HIGHLIGHTS

Research background

Chronic hepatitis B is a major infectious disease in China and Chinese medicine

has a wide range of applications in the treatment of CHB. Tongue diagnosis has important guiding significance for clinical syndrome differentiation and drug use in TCM, but lacks scientific explanations. Some reports have found abnormalities in the microbiota or metabolites in pathological tongue coatings. However, integrated analyses of the pathological tongue coating microbiotas and metabolites have rarely been reported. Elucidating the tongue coatings micro-features differences will promote our understanding of the TCM tongue diagnosis and facilitate therapeutic strategies for individualized treatment.

Research motivation

The motivation of this study was to explore the microfeatures of different tongue coatings, which could promote our understanding of the TCM tongue diagnosis from a modern perspective.

Research objectives

The objective of this research was to elucidate tongue coating microbiota and metabolic differences in CHB patients with yellow or white tongue coatings.

Research methods

We collected tongue coating samples from 28 CHB yellow tongue coating patients and 25 CHB white tongue coating patients, and an additional 22 samples were collected from healthy controls. The tongue coating bacterial 16S ribosomal RNA gene V3 region was amplified and sequenced with the Ion Torrent PGM™ sequencing platform. The metabolites in the tongue coatings were examined using a LC-MS platform. The microbiota results were analyzed using Metastats analysis, the Kruskal-Wallis test and LEfSe analysis. The functionality of the microbiota was assessed using PICRUST and compared among groups. The metabolomics enrichment analysis was performed with MetaboAnalyst 3.0 (<http://www.metaboanalyst.ca>). We correlated the microbiota with the clinical indices and metabolites and visualized the results with Spearman's correlation coefficients > 0.3 and $P < 0.05$ in Cytoscape.

Research results

This study found taxonomic and predicted function differences between the CHB yellow and white tongue coating patients. Distinct from those of the white coating patients, the CHB yellow tongue coating patients had specific clinical and microbiota characteristics. The microbiota of the CHB patients with yellow tongue coatings had similarities with a gut disorder in patients with cirrhosis at the phylum level, which manifested as a reduced abundance of Bacteroidetes and increased Proteobacteria content. Neisseriaceae, which is a dominant bacterial family enriched in yellow tongue coating patients, was positively correlated with the serum HBV-DNA level. The inferred metagenomic pathways enriched in the CHB yellow tongue coating patients were mainly those involved in amino acid metabolism, whereas the detected metabolites were mainly essential amino acids and generally were present in larger amounts than in the white tongue coatings.

Research conclusions

We found that the yellow and white tongue coatings of CHB patients had microbiota compositional and functional differences in this study.

Research perspectives

The sample size in this study was small. In the future, we will expand the sample size to further verify the results and focus on the relationship between changes in the oral and intestinal microbiotas to explore the effects of oral microbiota variance on immunity and metabolic alterations in the body. These studies will further explain the modern theoretical mechanism of TCM tongue diagnosis.

ACKNOWLEDGMENTS

The authors thank the doctors from the Shanghai University of TCM-affiliated Shuguang Hospital, the Nanjing Second Hospital and the Huai'an Fourth People's Hospital for the support with clinical information and samples collection.

REFERENCES

- Ye J, Cai X, Cao P. Problems and prospects of current studies on the microecology of tongue coating. *Chin Med* 2014; **9**: 9 [PMID: 24597827 DOI: 10.1186/1749-8546-9-9]
- Lira-Junior R, Boström EA. Oral-gut connection: one step closer to an integrated view of the gastrointestinal tract? *Mucosal Immunol* 2018; **11**: 316-318 [PMID: 29297500 DOI: 10.1038/mi.2017.116]
- Jiang B, Liang X, Chen Y, Ma T, Liu L, Li J, Jiang R, Chen T, Zhang X, Li S. Integrating next-generation sequencing and traditional tongue diagnosis to determine tongue coating microbiome. *Sci Rep* 2012; **2**: 936 [PMID: 23226834 DOI: 10.1038/srep00936]
- Sun ZM, Zhao J, Qian P, Wang YQ, Zhang WF, Guo CR, Pang XY, Wang SC, Li FF, Li Q. Metabolic markers and microecological characteristics of tongue coating in patients with chronic gastritis. *BMC Complement Altern Med* 2013; **13**: 227 [PMID: 24041039 DOI: 10.1186/1472-6882-13-227]
- Wang FS, Fan JG, Zhang Z, Gao B, Wang HY. The global burden of liver disease: the major impact of China. *Hepatology* 2014; **60**: 2099-2108 [PMID: 25164003 DOI: 10.1002/hep.27406]
- Chassaing B, Etienne-Mesmin L, Gewirtz AT. Microbiota-liver axis in hepatic disease. *Hepatology* 2014; **59**: 328-339 [PMID: 23703735 DOI: 10.1002/hep.26494]
- Bajaj JS, Betrapally NS, Hylemon PB, Heuman DM, Daita K, White MB, Unser A, Thacker LR, Sanyal AJ, Kang DJ, Sikaroodi M, Gillevet PM. Salivary microbiota reflects changes in gut microbiota in cirrhosis with hepatic encephalopathy. *Hepatology* 2015; **62**: 1260-1271 [PMID: 25820757 DOI: 10.1002/hep.27819]
- Tsai TY, Livneh H, Hung TH, Lin IH, Lu MC, Yeh CC. Associations between prescribed Chinese herbal medicine and risk of hepatocellular carcinoma in patients with chronic hepatitis B: a nationwide population-based cohort study. *BMJ Open* 2017; **7**: e014571 [PMID: 28122837 DOI: 10.1136/bmjopen-2016-014571]
- Kang H, Zhao Y, Li C, Chen Y, Tang K, Yang L, Ma C, Peng J, Zhu R, Liu Q, Hu Y, Cao Z. Integrating clinical indexes into four-diagnostic information contributes to the Traditional Chinese Medicine (TCM) syndrome diagnosis of chronic hepatitis B. *Sci Rep* 2015; **5**: 9395 [PMID: 25797918 DOI: 10.1038/srep09395]
- Zhao Y, Kang H, Peng JH, Xu L, Cao ZW, Hu YY. Key symptoms selection for two major syndromes diagnosis of Chinese medicine in chronic hepatitis B. *Chin J Integr Med* 2017; **23**: 253-260 [PMID: 27225292 DOI: 10.1007/s11655-016-2253-3]
- Amato KR, Yeoman CJ, Kent A, Righini N, Carbonero F, Estrada A, Gaskins HR, Stumpf RM, Yildirim S, Torralba M, Gillis M, Wilson BA, Nelson KE, White BA, Leigh SR. Habitat degradation impacts black howler monkey (*Alouatta pigra*) gastrointestinal microbiomes. *ISME J* 2013; **7**: 1344-1353 [PMID: 23486247 DOI: 10.1038/ismej.2013.16]
- Segata N, Izard J, Waldron L, Gevers D, Miropolsky L, Garrett WS, Huttenhower C. Metagenomic biomarker discovery and explanation. *Genome Biol* 2011; **12**: R60 [PMID: 21702898 DOI: 10.1186/gb-2011-12-6-r60]
- Langille MG, Zaneveld J, Caporaso JG, McDonald D, Knights D, Reyes JA, Clemente JC, Burkpile DE, Vega Thurber RL, Knight R, Beiko RG, Huttenhower C. Predictive functional profiling of microbial communities using 16S rRNA marker gene sequences. *Nat Biotechnol* 2013; **31**: 814-821 [PMID: 23975157 DOI: 10.1038/nbt.2676]
- Xia J, Sinelnikov IV, Han B, Wishart DS. MetaboAnalyst 3.0—making metabolomics more meaningful. *Nucleic Acids Res* 2015; **43**: W251-W257 [PMID: 25897128 DOI: 10.1093/nar/gkv380]
- Koren O, Spor A, Felin J, Fåk F, Stombaugh J, Tremaroli V, Behre CJ, Knight R, Fagerberg B, Ley RE, Bäckhed F. Human oral, gut, and plaque microbiota in patients with atherosclerosis. *Proc Natl Acad Sci U S A* 2011; **108 Suppl 1**: 4592-4598 [PMID: 20937873 DOI: 10.1073/pnas.1011383107]
- Zhang X, Zhang D, Jia H, Feng Q, Wang D, Liang D, Wu X, Li J, Tang L, Li Y, Lan Z, Chen B, Li Y, Zhong H, Xie H, Jie Z, Chen W, Tang S, Xu X, Wang X, Cai X, Liu S, Xia Y, Li J, Qiao X, Al-Aama JY, Chen H, Wang L, Wu QJ, Zhang F, Zheng W, Li Y, Zhang M, Luo G, Xue W, Xiao L, Li J, Chen W, Xu X, Yin Y, Yang H, Wang J, Kristiansen K, Liu L, Li T, Huang Q, Li Y, Wang J. The oral and gut microbiomes are perturbed in rheumatoid arthritis and partly normalized after treatment. *Nat Med* 2015; **21**: 895-905 [PMID: 26214836 DOI: 10.1038/nm.3914]
- Xiao E, Mattos M, Vieira GHA, Chen S, Corrêa JD, Wu Y, Albiero ML, Bittinger K, Graves DT. Diabetes Enhances IL-17 Expression and Alters the Oral Microbiome to Increase Its Pathogenicity. *Cell Host Microbe* 2017; **22**: 120-128.e4 [PMID: 28704648 DOI: 10.1016/j.chom.2017.06.014]
- Qin N, Yang F, Li A, Prifti E, Chen Y, Shao L, Guo J, Le Chatelier E, Yao J, Wu L, Zhou J, Ni S, Liu L, Pons N, Batto JM, Kennedy SP, Leonard P, Yuan C, Ding W, Chen Y, Hu X, Zheng B, Qian G, Xu W, Ehrlich SD, Zheng S, Li L. Alterations of the human gut microbiome in liver cirrhosis. *Nature* 2014; **513**: 59-64 [PMID: 25079328 DOI: 10.1038/nature13568]
- Bashan A, Gibson TE, Friedman J, Carey VJ, Weiss ST, Hohmann EL, Liu YY. Universality of human microbial dynamics. *Nature* 2016; **534**: 259-262 [PMID: 27279224 DOI: 10.1038/nature18301]
- Atarashi K, Suda W, Luo C, Kawaguchi T, Motoo I, Narushima S, Kiguchi Y, Yasuma K, Watanabe E, Tanoue T, Thaïs CA, Sato M, Toyooka K, Said HS, Yamagami H, Rice SA, Gevers D, Johnson RC, Segre JA, Chen K, Kolls JK, Elinav E, Morita H, Xavier RJ, Hattori M, Honda K. Ectopic colonization of oral bacteria in the intestine drives T_H1 cell induction and inflammation. *Science* 2017; **358**: 359-365 [PMID: 29051379 DOI: 10.1126/science.aan4526]
- Ding T, Schloss PD. Dynamics and associations of microbial community types across the human body. *Nature* 2014; **509**: 357-360 [PMID: 24739969 DOI: 10.1038/nature13178]
- Han S, Yang X, Qi Q, Pan Y, Chen Y, Shen J, Liao H, Ji Z. Potential screening and early diagnosis method for cancer: Tongue diagnosis. *Int J Oncol* 2016; **48**: 2257-2264 [PMID: 27035407 DOI: 10.3892/ijo.2016.3466]
- RiYang L, HangYing Y, JunYan Q, YaYu L, YuHui W, YaZhen Y, JiaZhen Y, Jin Y, Jun N, DongRong Y. Association between tongue coating thickness and clinical characteristics among idiopathic membranous nephropathy patients. *J Ethnopharmacol* 2015; **171**: 125-130 [PMID: 25997785 DOI: 10.1016/j.jep.2015.05.008]
- Human Microbiome Project Consortium. Structure, function and diversity of the healthy human microbiome. *Nature* 2012; **486**: 207-214 [PMID: 22699609 DOI: 10.1038/nature11234]
- Lee TC, Lo LC, Wu FC. Traditional Chinese Medicine for Metabolic Syndrome via TCM Pattern Differentiation: Tongue Diagnosis for Predictor. *Evid Based Complement Alternat Med* 2016; **2016**: 1971295 [PMID: 27313640 DOI: 10.1155/2016/1971295]
- Tilg H, Cani PD, Mayer EA. Gut microbiome and liver diseases. *Gut* 2016; **65**: 2035-2044 [PMID: 27802157 DOI: 10.1136/gutjnl-2016-312729]
- Wang J, Wang Y, Zhang X, Liu J, Zhang Q, Zhao Y, Peng J, Feng Q, Dai J, Sun S, Zhao Y, Zhao L, Zhang Y, Hu Y, Zhang M. Gut Microbial Dysbiosis Is Associated with Altered Hepatic Functions and Serum Metabolites in Chronic Hepatitis B Patients. *Front Microbiol* 2017; **8**: 2222 [PMID: 29180991 DOI: 10.3389/fmicb.2017.02222]
- Ren YD, Ye ZS, Yang LZ, Jin LX, Wei WJ, Deng YY, Chen XX, Xiao CX, Yu XF, Xu HZ, Xu LZ, Tang YN, Zhou F, Wang XL, Chen MY, Chen LG, Hong MZ, Ren JL, Pan JS. Fecal microbiota transplantation induces hepatitis B virus e-antigen (HBeAg) clearance in patients with positive HBeAg after long-term antiviral therapy. *Hepatology* 2017; **65**: 1765-1768 [PMID: 28027582 DOI: 10.1002/hep.29008]
- Ling Z, Liu X, Cheng Y, Jiang X, Jiang H, Wang Y, Li L. Decreased Diversity of the Oral Microbiota of Patients with Hepatitis B Virus-Induced Chronic Liver Disease: A Pilot Project. *Sci Rep* 2015; **5**: 17098 [PMID: 26606973 DOI: 10.1038/srep17098]
- Ren W, Xun Z, Wang Z, Zhang Q, Liu X, Zheng H, Zhang Q, Zhang Y, Zhang L, Wu C, Zheng S, Qin N, Ehrlich SD, Li Y, He X, Xu T, Chen T, Chen F. Tongue Coating and the Salivary Microbial Communities Vary in Children with Halitosis. *Sci Rep* 2016; **6**: 24481 [PMID: 27080513 DOI: 10.1038/srep24481]

- 31 **Aas JA**, Paster BJ, Stokes LN, Olsen I, Dewhirst FE. Defining the normal bacterial flora of the oral cavity. *J Clin Microbiol* 2005; **43**: 5721-5732 [PMID: 16272510 DOI: 10.1128/JCM.43.11.5721-5732.2005]
- 32 **Sun YG**, Sun YL. Progress of the study on the relationship between TCM Syndromes of chronic hepatitis B and objective indicators. *Zhongyiyao Daobao* 2011; **17**: 76-78 [DOI: 10.13862/j.cnki.cn43-1446/r.2011.12.027]
- 33 **Lu SC**, Mato JM. S-adenosylmethionine in liver health, injury, and cancer. *Physiol Rev* 2012; **92**: 1515-1542 [PMID: 23073625 DOI: 10.1152/physrev.00047.2011]
- 34 **Li R**, Ma T, Gu J, Liang X, Li S. Imbalanced network biomarkers for traditional Chinese medicine Syndrome in gastritis patients. *Sci Rep* 2013; **3**: 1543 [PMID: 23529020 DOI: 10.1038/srep01543]
- 35 **Lu YY**, Zhao Y, Song YN, Dong S, Wei B, Chen QL, Hu YY, Su SB. Serum cytokine profiling analysis for zheng differentiation in chronic hepatitis B. *Chin Med* 2015; **10**: 24 [PMID: 26312063 DOI: 10.1186/s13020-015-0055-8]
- 36 **Chen Y**, Yang F, Lu H, Wang B, Chen Y, Lei D, Wang Y, Zhu B, Li L. Characterization of fecal microbial communities in patients with liver cirrhosis. *Hepatology* 2011; **54**: 562-572 [PMID: 21574172 DOI: 10.1002/hep.24423]
- 37 **Lv LX**, Fang DQ, Shi D, Chen DY, Yan R, Zhu YX, Chen YF, Shao L, Guo FF, Wu WR, Li A, Shi HY, Jiang XW, Jiang HY, Xiao YH, Zheng SS, Li LJ. Alterations and correlations of the gut microbiome, metabolism and immunity in patients with primary biliary cirrhosis. *Environ Microbiol* 2016; **18**: 2272-2286 [PMID: 27243236 DOI: 10.1111/1462-2920.13401]
- 38 **Guo Z**, Wang WY, Dai JY, Fan ZQ, Cao HJ, Sun SJ, Zhang YY, Xu LM, Hu YY, Su SB. Investigation on Urinary Metabolomic in Syndrome Types of Cirrhosis Caused by Hepatitis B. *Shijie Kexue Jishu-Zhongyiyao Xiandaihua* 2012; **14**: 1282-1287

P- Reviewer: Jafari SA, Liu Y, Su SB **S- Editor:** Gong ZM

L- Editor: A **E- Editor:** Yin SY





Published by **Baishideng Publishing Group Inc**
7901 Stoneridge Drive, Suite 501, Pleasanton, CA 94588, USA
Telephone: +1-925-223-8242
Fax: +1-925-223-8243
E-mail: bpgoffice@wjgnet.com
Help Desk: <http://www.f6publishing.com/helpdesk>
<http://www.wjgnet.com>



ISSN 1007-9327

