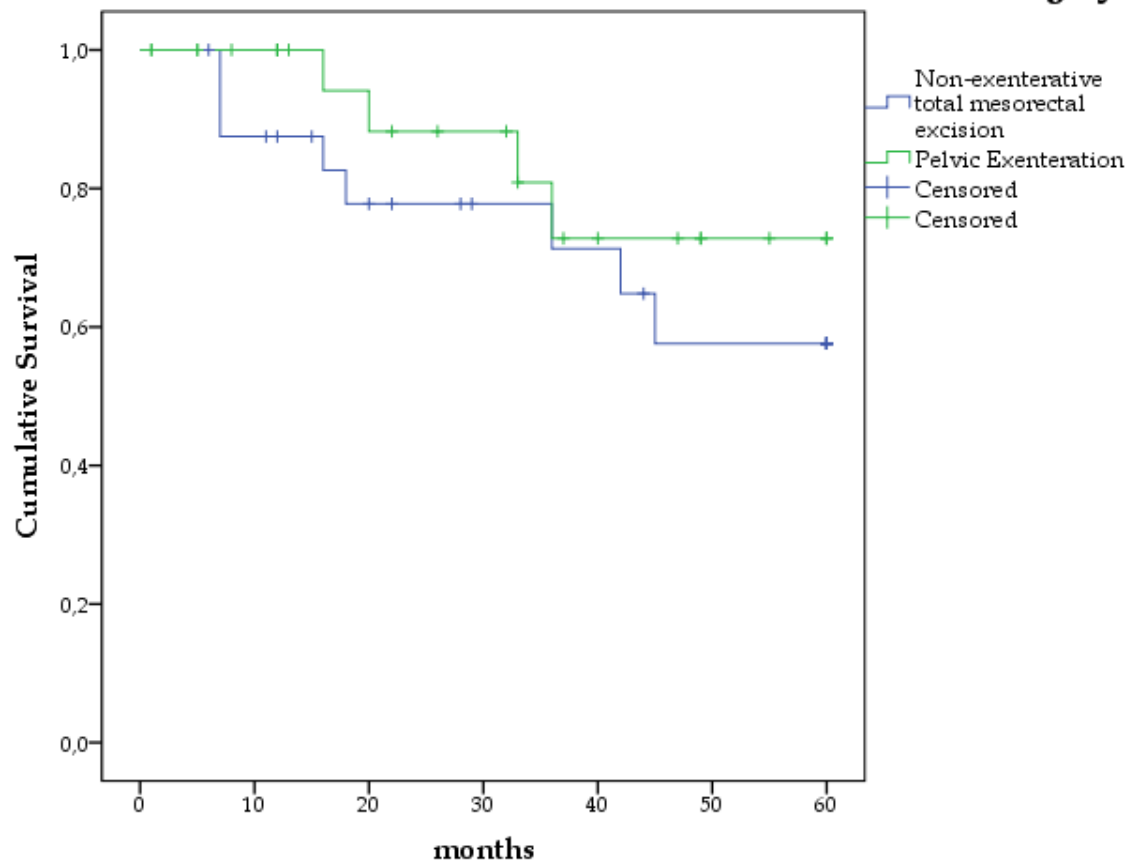


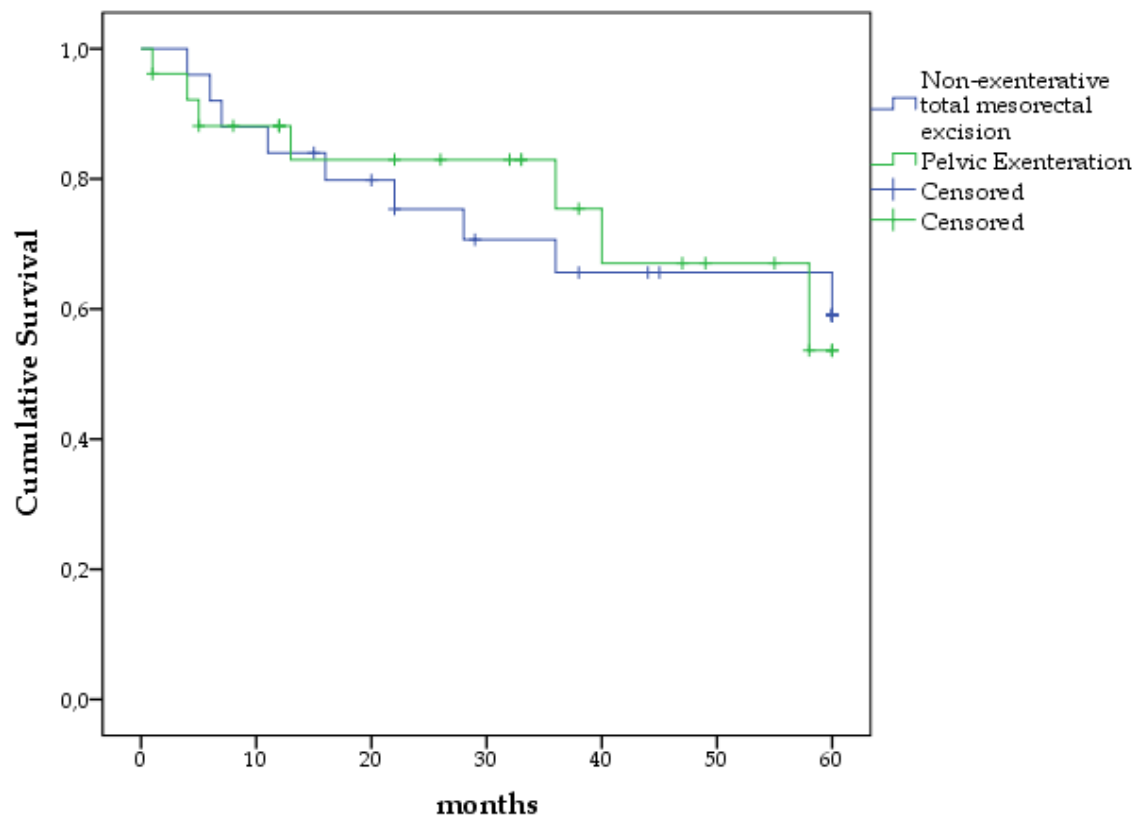
Supplementary Figure 1 Kaplan-Meier curves for local recurrence comparison in matched patients who received pelvic exenteration *vs* non-exenterative total mesorectal excision surgery for locally advanced primary rectal cancer of the lower third of the rectum. Log rank $P = 0.34$.

Local Recurrence: Pelvic Exenteration vs Non-exenterative surgery



Supplementary Figure 2 Kaplan-Meier curves for local recurrence comparison in matched patients who received pelvic exenteration *vs* non-exenterative total mesorectal excision surgery for locally advanced primary rectal cancer of the lower third of the rectum. Log rank $P = 0.34$.

Overall Survival: Pelvic Exenteration vs Non-exenterative Surgery



Supplementary Figure 3 Kaplan-Meier curves for overall survival comparison in matched patients who received pelvic exenteration *vs* non-exenterative total mesorectal excision surgery for locally advanced primary rectal cancer of the lower third of the rectum. Log rank $P = 0.96$.