

Supplementary Table 1 Clinicopathologic correlations of the different terms of atypical epithelium and regenerating atypia describing indefinite for neoplasm/dysplasia *n* (%)

IFND						
Initial Dx	Atypical epithelium		<i>P</i>	Regenerating atypia		<i>P</i>
Final Dx	Non-carcinoma	Carcinoma		Non-carcinoma	Carcinoma	
	<i>n</i> = 90	<i>n</i> = 95		<i>n</i> = 267	<i>n</i> = 9	
Age (yr)			0.005			0.039
< 60	47 (52.2)	30 (31.6)		157 (58.8)	2 (22.2)	
≥ 60	43 (47.8)	65 (68.4)		110 (41.2)	7 (77.8)	
Sex			0.907			0.066
Male	58 (64.4)	62 (65.3)		190 (71.2)	9 (100.0)	
Female	32 (35.6)	33 (34.7)		77 (28.8)	0 (0.0)	
Endoscopic size (mm)			<0.001			0.012
< 10	59 (65.6)	32 (33.7)		192 (71.9)	3 (33.3)	
≥ 10	31 (34.4)	63 (66.3)		75 (28.1)	6 (66.7)	
Location I			0.829			0.473
Upper	8 (8.9)	7 (7.4)		26 (9.7)	2 (22.2)	
Middle	28 (31.1)	27 (28.4)		65 (24.3)	2 (22.2)	
Lower	54 (60.0)	61 (64.2)		176 (65.9)	5 (55.6)	
Location II			0.330			0.289
Fundus	2 (2.2)	0 (0.0)		6 (2.2)	1 (11.1)	
Body	28 (31.1)	27 (28.4)		65 (24.4)	2 (22.2)	
Antrum	47 (52.2)	58 (61.1)		166 (62.2)	6 (66.7)	
Angle	13 (14.5)	10 (10.5)		30 (11.2)	0 (0.0)	
Location III			0.837			0.008
Anterior wall	18 (20.0)	15 (15.8)		37 (13.9)	5 (55.6)	
Posterior wall	12 (13.3)	12 (12.6)		51 (19.1)	1 (11.1)	
Greater curvature	18 (20.0)	23 (24.2)		43 (16.1)	1 (11.1)	
Lesser curvature	42 (46.7)	45 (47.4)		136 (50.9)	2 (22.2)	

Gross type			0.519			0.202
Elevated	39 (43.3)	41 (43.2)		97 (36.3)	4 (44.4)	
Flat	33 (36.7)	29 (30.5)		101 (37.8)	5 (55.6)	
Depressed	18 (20.0)	25 (26.3)		69 (25.9)	0 (0.0)	
Color change			0.133			0.085
Redness	61 (67.8)	58 (61.1)		189 (70.8)	6 (66.7)	
Whitish	14 (15.5)	10 (10.5)		31 (11.6)	3 (33.3)	
No change	15 (16.7)	27 (28.4)		47 (17.6)	0 (0.0)	
Single lesion			< 0.001			0.013
No	25 (27.8)	7 (7.4)		109 (40.8)	0 (0.0)	
Yes	65 (72.2)	88 (92.6)		158 (59.2)	9 (100.0)	
Ulcer			0.139			0.692
No	70 (77.8)	64 (67.4)		194 (72.7)	6 (66.7)	
Yes	20 (22.2)	31 (32.6)		73 (27.3)	3 (33.3)	
Spontaneous bleeding			< 0.001			0.649
No	84 (93.3)	65 (68.4)		248 (92.9)	8 (88.9)	
Yes	6 (6.7)	30 (31.6)		19 (7.1)	1 (11.1)	
Fold change			0.815			0.125
No	81 (90.0)	84 (88.4)		246 (92.1)	7 (77.8)	
Yes	9 (10.0)	11 (11.6)		21 (7.9)	2 (22.2)	
Bx number at initial endoscopic Bx	1.74 ± 1.17	2.13 ± 1.21	0.030	1.78 ± 1.11	2.33 ± 2.59	0.171

IFND: Indefinite for neoplasm/dysplasia; Dx: Diagnosis; Bx: Biopsy.

Supplementary Table 2 Diagnostic value of the clinical predictive factors for the diagnosis of gastric carcinoma in indefinite for neoplasm/dysplasia

Predictive factors	Sensitivity	Specificity	PPV	NPV
≥ 1 factor	99.0%	17.9%	26.0%	98.4%
≥ 2 factors	91.3%	54.9%	37.1%	95.6%
≥ 3 factors	56.7%	86.8%	55.6%	87.3%
≥ 4 factors	11.5%	98.3%	66.6%	79.2%

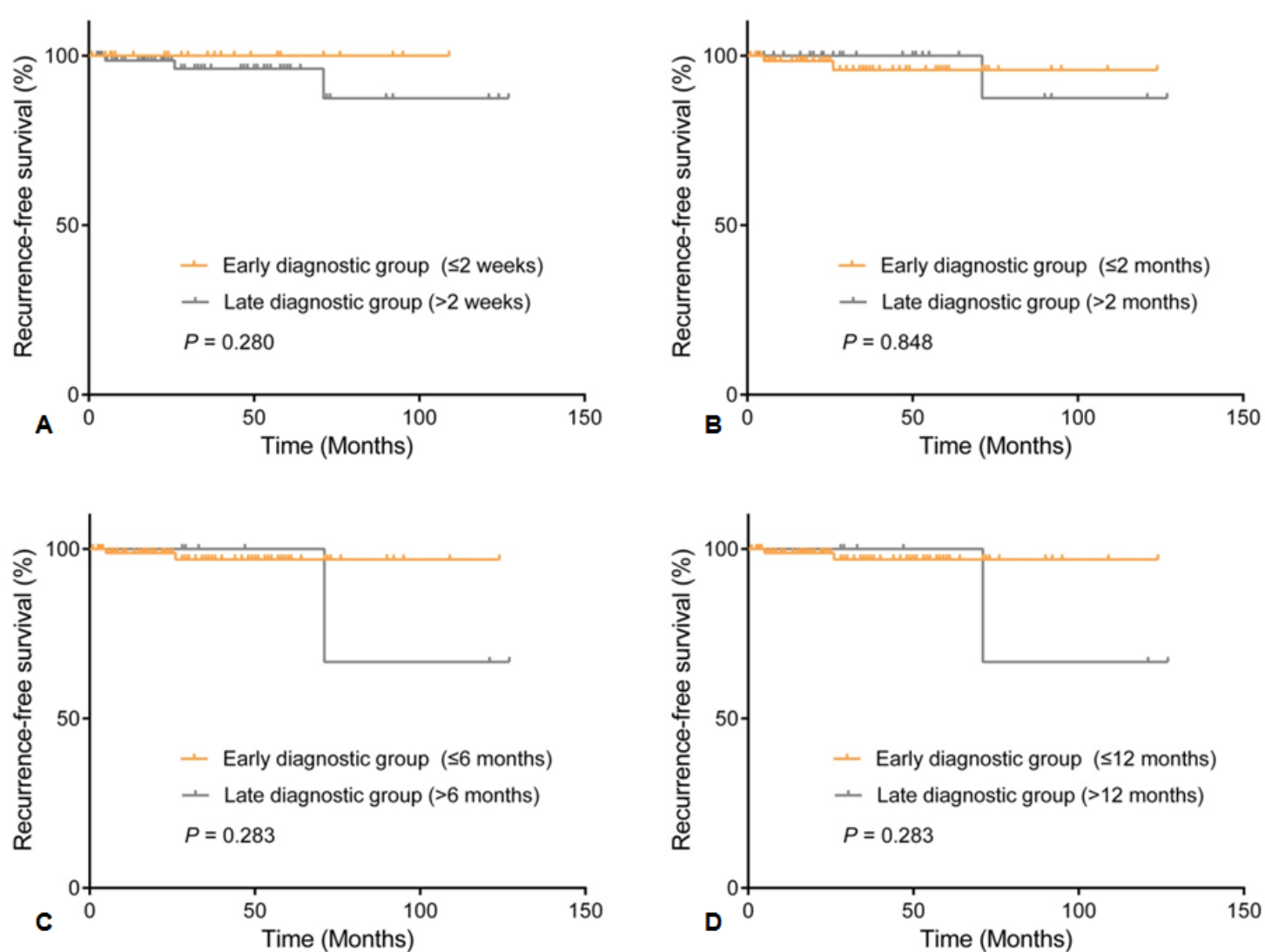
PPV: Positive predictive value; NPV: Negative predictive value.

Supplementary Table 3 Clinicopathologic factors of the finally confirmed undifferentiated carcinoma and non-carcinoma cases in the indefinite for neoplasm/dysplasia lesions reported in the initial forceps biopsy *n* (%)

Initial Dx	IFND			<i>P</i>
Final Dx	Total	Non-carcinoma	Undifferentiated carcinoma	
	<i>N</i> = 367	<i>n</i> = 357	<i>n</i> = 10	
Sex				0.505
Male	254 (69.2)	248 (69.5)	6 (60.0)	
Female	113 (30.8)	109 (30.5)	4 (40.0)	
Age (y)				0.340
< 60	208 (56.7)	204 (57.1)	4 (40.0)	
≥ 60	159 (43.3)	153 (42.9)	6 (60.0)	
Endoscopic size (mm)				0.012
< 10	252 (69.0)	249 (70.1)	3 (30.0)	
≥ 10	113 (31.0)	106 (29.9)	7 (70.0)	
Location				0.223
Upper	35 (9.5)	34 (9.5)	1 (10.0)	
Middle	98 (26.7)	93 (26.1)	5 (50.0)	
Lower	4 (40.0)	230 (64.4)	4 (40.0)	
Gross type				0.099
Elevated	137 (37.3)	136 (38.1)	1 (10)	
Flat	138 (37.6)	134 (37.5)	4 (40.0)	
Depressed	92 (25.1)	87 (24.4)	5 (50.0)	
Color change				0.697
Redness	257 (70.0)	250 (70.0)	7 (70.0)	
Whitish	47 (12.8)	45 (12.6)	2 (20.0)	
No change	63 (17.2)	62 (17.4)	1 (10.0)	
Single lesion				0.016

No	134 (36.5)	134 (37.5)	0 (0)	
Yes	233 (63.5)	223 (62.5)	10 (100)	
Ulcer				0.027
No	268 (73.0)	264 (73.9)	4 (40.0)	
Yes	99 (27.0)	93 (26.1)	6 (60.0)	
Spontaneous bleeding				0.005
No	338 (92.1)	332 (93.0)	6 (60)	
Yes	29 (7.9)	25 (7.0)	4 (40)	
Fold change				0.000
No	332 (90.5)	327 (91.6)	5 (50)	
Yes	35 (9.5)	30 (8.4)	5 (50)	
Initial Bx				0.000
Regenerating atypia	268 (73.0)	267 (74.8)	1 (10.0)	
Atypical epithelium	99 (27.0)	90 (25.2)	9 (90.0)	
Repeated IFND				1.000
No	355 (96.7)	345 (96.6)	10 (100)	
Yes	12 (3.3)	12 (3.4)	0 (0)	
Bx number at initial endoscopic Bx		1.77 ± 1.13	2.50 ± 1.080	0.063

Dx: Diagnosis; IFND: Indefinite for neoplasm/ dysplasia; Bx: Biopsy.



Supplementary Figure 1 Recurrence-free survival curves according to the cut-off values of diagnostic delay in confirmed gastric cancer. A: 2 wk. B: 2 mo. C: 6 mo. D 12 mo. The early diagnostic groups were not associated with recurrence-free survival compared to the delayed diagnostic groups.