

# World Journal of *Hepatology*

*World J Hepatol* 2019 January 27; 11(1): 1-137



**REVIEW**

- 1 Hepatocellular carcinoma in non-cirrhotic liver: A comprehensive review  
*Desai A, Sandhu S, Lai JP, Sandhu DS*
- 19 Treatment of primary sclerosing cholangitis in children  
*Laborda TJ, Jensen MK, Kavan M, Deneau M*
- 37 Hepatitis in slaughterhouse workers  
*Tariq H, Kamal MU, Makker J, Azam S, Pirzada UA, Mehak V, Kumar K, Patel H*
- 50 Serum biomarkers and risk of hepatocellular carcinoma recurrence after liver transplantation  
*Citores MJ, Lucena JL, de la Fuente S, Cuervas-Mons V*

**MINIREVIEWS**

- 65 Persistent risk for new, subsequent new and recurrent hepatocellular carcinoma despite successful anti-hepatitis B virus therapy and tumor ablation: The need for hepatitis B virus cure  
*Shinn BJ, Martin A, Coben RM, Conn MI, Prieto J, Kroop H, DiMarino AJ, Hann HW*

**ORIGINAL ARTICLE****Basic Study**

- 74 Temporal trends of cirrhosis associated conditions  
*Sempokuya T, Zhang G, Nakagawa K*

**Retrospective Study**

- 86 Clinical factors associated with hepatitis B screening and vaccination in high-risk adults  
*Ayoola R, Larion S, Poppers DM, Williams R*
- 99 Low platelet count: Predictor of death and graft loss after liver transplantation  
*Beltrame P, Rodriguez S, Brandão ABDM*

**Observational Study**

- 109 High prevalence of occult hepatitis C infection in predialysis patients  
*Sette LHBC, Lopes EPDA, Guedes dos Anjos NC, Valente LM, Vieira de Oliveira SA, Lucena-Silva N*

**CASE REPORT**

- 119 Multidisciplinary approach for multifocal, bilobar hepatocellular carcinoma: A case report and literature review  
*Labadie KP, Schaub SK, Khorsand D, Johnson G, Apisarnthanarax S, Park JO*

- 127** Non-uremic calciphylaxis associated with alcoholic hepatitis: A case report  
*Sammour YM, Saleh HM, Gad MM, Healey B, Piliang M*
- 133** Caval replacement with parietal peritoneum tube graft for septic thrombophlebitis after hepatectomy: A case report  
*Maulat C, Lapierre L, Miguères I, Chaufour X, Martin-Blondel G, Muscari F*

**ABOUT COVER**

Editor-in-Chief of *World Journal of Hepatology*, Nikolaos Pyrsopoulos, FACP, FRCP (C), MD, PhD, Director, Professor, Research Scientist, Gastroenterology and Hepatology, Rutgers New Jersey Medical School, University Hospital, Newark, NJ 07103, United States

**AIMS AND SCOPE**

*World Journal of Hepatology* (*World J Hepatol*, *WJH*, online ISSN 1948-5182, DOI: 10.4254), is a peer-reviewed open access academic journal that aims to guide clinical practice and improve diagnostic and therapeutic skills of clinicians.

*WJH* covers topics concerning liver biology/pathology, cirrhosis and its complications, liver fibrosis, liver failure, portal hypertension, hepatitis B and C and inflammatory disorders, steatohepatitis and metabolic liver disease, hepatocellular carcinoma, etc. Priority publication will be given to articles concerning diagnosis and treatment of hepatology diseases. The following aspects are covered: Clinical diagnosis, laboratory diagnosis, etc.

We encourage authors to submit their manuscripts to *WJH*. We will give priority to manuscripts that are supported by major national and international foundations and those that are of great basic and clinical significance.

**INDEXING/ABSTRACTING**

*World Journal of Hepatology* is now abstracted and indexed in PubMed, PubMed Central, Emerging Sources Citation Index (Web of Science), Scopus, China National Knowledge Infrastructure (CNKI), China Science and Technology Journal Database (CSTJ), and Superstar Journals Database.

**RESPONSIBLE EDITORS FOR THIS ISSUE**

Responsible Electronic Editor: Wen-Wen Tan      Proofing Editorial Office Director: Jin-Lei Wang

**NAME OF JOURNAL**

*World Journal of Hepatology*

**ISSN**

ISSN 1948-5182 (online)

**LAUNCH DATE**

October 31, 2009

**FREQUENCY**

Monthly

**EDITORS-IN-CHIEF**

Ke-Qin Hu, Koo Jeong Kang, Nikolaos Pyrsopoulos

**EDITORIAL BOARD MEMBERS**

<https://www.wjnet.com/1948-5182/editorialboard.htm>

**EDITORIAL OFFICE**

Jin-Lei Wang, Director

**PUBLICATION DATE**

January 27, 2019

**COPYRIGHT**

© 2019 Baishideng Publishing Group Inc

**INSTRUCTIONS TO AUTHORS**

<https://www.wjnet.com/bpg/gerinfo/204>

**GUIDELINES FOR ETHICS DOCUMENTS**

<https://www.wjnet.com/bpg/GerInfo/287>

**GUIDELINES FOR NON-NATIVE SPEAKERS OF ENGLISH**

<https://www.wjnet.com/bpg/gerinfo/240>

**PUBLICATION MISCONDUCT**

<https://www.wjnet.com/bpg/gerinfo/208>

**ARTICLE PROCESSING CHARGE**

<https://www.wjnet.com/bpg/gerinfo/242>

**STEPS FOR SUBMITTING MANUSCRIPTS**

<https://www.wjnet.com/bpg/GerInfo/239>

**ONLINE SUBMISSION**

<https://www.f6publishing.com>



## Observational Study

# High prevalence of occult hepatitis C infection in predialysis patients

Luís Henrique Bezerra Cavalcanti Sette, Edmundo Pessoa de Almeida Lopes,  
Nathália Campello Guedes dos Anjos, Lucila Maria Valente, Sávio Augusto Vieira de Oliveira,  
Norma Lucena-Silva

**ORCID number:** Luis Henrique Bezerra Cavalcanti Sette (0000-0002-1137-6412); Edmundo Pessoa de Almeida Lopes (0000-0002-3470-1564); Nathalia Campello Guedes dos Anjos (0000-0003-1574-5059); Lucila Maria Valente (0000-0003-2908-4212); Sávio Augusto Vieira de Oliveira (0000-0002-4320-4789); Norma Lucena-Silva (0000-0002-6140-1794).

**Author contributions:** Sette LHBC conceived of the presented idea, designed the report, collected and analyzed the clinical data, and wrote the paper; Lopes EPA conceived of the presented idea, designed the report, analyzed the data and wrote the paper; Guedes dos Anjos NC designed the report and collected the clinical data; Valente LM conceived of the presented idea, and analyzed the data; Vieira de Oliveira SA performed the biochemical and PCR testing; Lucena-Silva N conceived of the presented idea, performed the biochemical and PCR testing, analyzed the data, and wrote the paper.

**Supported by** the National Council for Scientific and Technological Development (CNPq), No. 429736-2016/9.

**Institutional review board statement:** The Federal University of Pernambuco Institutional Review Board provided approval for this study (IRB No. 50121315.3.0000.5208).

**Informed consent statement:** Written informed consent was given by each study participant.

**Luís Henrique Bezerra Cavalcanti Sette, Nathália Campello Guedes dos Anjos, Lucila Maria Valente,** Nephrology-Department of Clinical Medicine, Federal University of Pernambuco, Pernambuco 50670-901, Brazil

**Edmundo Pessoa de Almeida Lopes,** Gastroenterology-Department of Clinical Medicine, Federal University of Pernambuco, Pernambuco 50670-900, Brazil

**Sávio Augusto Vieira de Oliveira, Norma Lucena-Silva,** Laboratory of Immunogenetics of the Aggeu Magalhães Institute - Fiocruz Pernambuco, Pernambuco 50670-420, Brazil

**Corresponding author:** Luís Henrique Bezerra Cavalcanti Sette, MD, PhD, Research Assistant Professor, Nephrology-Department of Clinical Medicine, Federal University of Pernambuco, 1235 Moraes Rego avenue, Recife, Pernambuco 50670-901, Brazil. [luis.sette@ufpe.br](mailto:luis.sette@ufpe.br)  
**Telephone:** +55-819-97477777  
**Fax:** +55-812-1263733

## Abstract

### BACKGROUND

Occult hepatitis C virus (HCV) infection (OCI) may be associated with extrahepatic diseases and it is known that the patients with chronic kidney disease (CKD) who are on hemodialysis (HD) present a higher prevalence of this type of infection than the general population, with a worse clinical outcome. However, there are no data in the literature to assess the presence of OCI in patients prior to the initiation of renal replacement therapy (RRT). Therefore, this study aimed to evaluate the occurrence and epidemiological aspects of OCI in patients with Predialysis CKD. We hypothesize that this infection could occur before RRT initiation.

### AIM

To research the status in predialysis patients when HD patients have high prevalence of OCI.

### METHODS

A cross-sectional study was conducted between 2015 and 2017. Adults with creatinine clearance  $< 60$  mL/min  $1.73$  m<sup>2</sup> (predialysis patients) were recruited to the study. Pregnant and postpartum women, patients with glomerulopathies, and patients showing positivity for serological markers of hepatitis B virus (HBV), HCV or human immunodeficiency virus infection were excluded. Patients were diagnosed with OCI according to test results of anti-HCV antibody negativity and HCV RNA positivity in either ultracentrifuged serum or, if serum-

**Conflict-of-interest statement:** All of the authors declare no conflicts of interest.

**Data sharing statement:** The dataset is available upon request made to the main investigator, Luis Henrique Bezerra Cavalcanti Sette (luis.sette@ufpe.br).

**STROBE statement:** The authors have read the STROBE Statement – checklist of items, and the manuscript was prepared and revised according to the STROBE Statement – checklist of items.

**Open-Access:** This article is an open-access article which was selected by an in-house editor and fully peer-reviewed by external reviewers. It is distributed in accordance with the Creative Commons Attribution Non Commercial (CC BY-NC 4.0) license, which permits others to distribute, remix, adapt, build upon this work non-commercially, and license their derivative works on different terms, provided the original work is properly cited and the use is non-commercial. See: <http://creativecommons.org/licenses/by-nc/4.0/>

**Manuscript source:** Unsolicited manuscript

**Received:** October 30, 2018

**Peer-review started:** October 31, 2018

**First decision:** December 9, 2018

**Revised:** December 20, 2018

**Accepted:** January 3, 2019

**Article in press:** January 4, 2019

**Published online:** January 27, 2019

negative, in peripheral blood mononuclear cells.

## RESULTS

Among the 91 total patients included in the study, the prevalence of OCI was 16.5%. Among these 15 total OCI patients, 1 was diagnosed by 14 ultracentrifuged serum results and 14 were diagnosed by peripheral blood mononuclear cell results. Compared to the non-OCI group, the OCI patients presented higher frequency of older age ( $P = 0.002$ ), patients with CKD of mixed etiology ( $P = 0.019$ ), and patients with markers of previous HBV infection (*i.e.*, combined positivity for anti-hepatitis B core protein antibody and anti-hepatitis B surface protein antibody) ( $P = 0.001$ ).

## CONCLUSION

Among predialysis patients, OCI involved the elderly, patients with CKD of mixed etiology, and patients with previous HBV infection.

**Key words:** Occult hepatitis infection; Chronic hepatitis C; Chronic kidney disease; Hemodialysis; Hepatitis C virus-RNA; Peripheral blood mononuclear cells

©The Author(s) 2019. Published by Baishideng Publishing Group Inc. All rights reserved.

**Core tip:** Evaluation of patients with chronic renal disease and glomerular filtration rate lower than 30 mL/min·1.73 m<sup>2</sup> showed high occurrence of occult hepatitis C virus infection (OCI). In addition, the study population showed higher occurrence of OCI among patients who were older, had chronic kidney disease (CKD) of multifactorial etiology, and had prior contact with the hepatitis B virus. Further studies will be needed to clarify the pathophysiology of renal injury caused by OCI, the influence of this type of infection on the transmissibility of hepatitis C virus, and the role of treatment for patients with OCI and CKD.

**Citation:** Sette LHBC, Lopes EPDA, Guedes dos Anjos NC, Valente LM, Vieira de Oliveira SA, Lucena-Silva N. High prevalence of occult hepatitis C infection in predialysis patients. *World J Hepatol* 2019; 11(1): 109-118

**URL:** <https://www.wjgnet.com/1948-5182/full/v11/i1/109.htm>

**DOI:** <https://dx.doi.org/10.4254/wjh.v11.i1.109>

## INTRODUCTION

Occult hepatitis C virus (HCV) infection (OCI) is characterized by presence of HCV genetic material (HCV RNA) in a patient's peripheral blood mononuclear cells (PBMCs), ultracentrifuged serum, or hepatic tissue, along with the absence of HCV antibodies (anti-HCV) and HCV RNA in the non-ultracentrifuged serum<sup>[1]</sup>. This form of viral hepatitis may be associated with tissue damage in the liver (*i.e.*, chronic cryptogenic liver disease and nonalcoholic fatty liver disease)<sup>[2-4]</sup> and extrahepatic diseases (*i.e.*, glomerulopathies, lymphoproliferative diseases, and end-stage renal disease)<sup>[5-7]</sup>.

It has been suggested that a specific cellular immune response underlies OCI, one that is less effective than the response in individuals without infection but which is more effective than that in individuals with the classic form of the disease (HCV RNA-positive serum)<sup>[8]</sup>. It is known that the patients with chronic kidney disease (CKD) who are on hemodialysis (HD) present a higher prevalence of HCV infection than the general population, both in its classical form<sup>[9]</sup> and the occult form, reaching up to 45% prevalence among patients with OCI<sup>[7,10]</sup>.

Nowadays, due to universal precautions in HD units and the reduced need for blood transfusion, some authors suggest that HCV infection may occur in the predialytic period<sup>[11]</sup>. Indeed, patients with predialysis (PD)CKD have a higher prevalence of infection with HCV and hepatitis B virus (HBV), as compared to the general population<sup>[12-14]</sup>. However, there are no data in the literature to assess the presence of OCI in patients prior to the initiation of renal replacement therapy.

The study of the epidemiology of OCI in patients with PDCKD is relevant according to: (1) the higher prevalence of classic HCV infection in HD patients<sup>[9,15]</sup>; (2)



the outlook for the use of diagnostic OCI techniques in these patients before the onset of HD<sup>[1]</sup>; (3) the greater difficulty in identifying hepatic aggression in patients with CKD due to reduced serum aminotransferase levels resulting from hemodilution<sup>[16]</sup>; and, finally; and (4) the possibility of HCV treatment with the new direct-acting antiviral agents that have few side effects and high efficacy<sup>[17]</sup>.

Therefore, this study aimed to evaluate the occurrence and epidemiological aspects of OCI in patients with PDCKD.

## MATERIALS AND METHODS

### Study design

A cross-sectional study was carried out from October 2015 to April 2017, in which patients with PDCKD were evaluated in the CKD Outpatient Clinic of the Nephrology Service of the Federal University of Pernambuco (Brazil). Adult patients with a follow-up period of more than 3 mo and with an estimated creatinine clearance of less than 60 mL/min 1.73m<sup>2</sup> were included. Pregnant and postpartum women, patients with glomerulopathies, and patients with serological markers of infection with either HBV [hepatitis B surface antigen (HBsAg)-positive], HCV (anti-HCV-positive) or human immunodeficiency virus (commonly known as HIV) (anti-HIV-positive) were excluded.

Each study participant provided written informed consent following the explanation that study participation would: (1) not disrupt the patient's normal attendance at the outpatient clinic; (2) include a copy of all exam results being placed in their medical record, so that the doctor accompanying the patient in clinic will know the results; and (3) provide information for research for publication, with any exam results being published without the patient name. The risks and benefits of study participation were also explained. Samples were only taken from patients after agreement to study participation and signing of the informed consent form.

Each study participant enrolled in the study filled out a questionnaire on demographic characteristics (sex, age, ethnicity), clinical diagnoses of CKD (stage, etiology) and risk factors for viral hepatitis acquisition (transfusion, tattooing, piercing, intravenous drug use). A blood sample (20 mL in vacutainer tube) was drawn from each participant's peripheral vein, for use in biochemical, serological and virological laboratory tests.

Serum levels of aminotransferases (aspartate aminotransferase, alanine aminotransferase) and creatinine were determined by automated method (UV Diasys-Architect c8000; Abbott Diagnostics, Lake Forest, IL, United States). The creatinine clearance rate was evaluated by the Chronic Kidney Disease Epidemiology Collaboration formula (commonly known as the CKD-EPI equation)<sup>[18]</sup>.

Evaluation of viral infections included third-generation ELISA serum screening for anti-HCV, rapid immunochromatographic assay for the qualitative determination of HBsAg, and immunoassays for anti-HBs detection by direct chemiluminescence (ADVIA Centaur® automated system; Siemens Healthcare Diagnostics S.A., Sao Paulo, Brazil) and for total qualitative anti-hepatitis B core protein (HBc) (IMMUNITE 2000® Immunoassay; Siemens Healthcare Diagnostics S.A.). Patients with negative results on anti-HCV and HBsAg screening were included in the study and evaluated for OCI.

Patients were diagnosed with OCI if they were positive for HCV RNA by PCR screening of ultracentrifuged serum or PBMCs. If the screening was positive for HCV RNA in the ultracentrifuged serum, the patient's sample of non-ultracentrifuged serum was screened using the same procedure to confirm the diagnosis of OCI.

### Detection of HCV RNA

Each peripheral blood sample was initially centrifuged at 3000 x g for 7 min at room temperature, to obtain serum. Then, a 2 mL aliquot of the serum was overlaid by a 10% sucrose buffer, in a ratio of 1:1, and ultracentrifuged at 100000 x g for 17 h at 4 °C. The precipitate obtained by ultracentrifugation was eluted in 200 µL of diethylpyrocarbonate (DEPC; Invitrogen, Carlsbad, CA, United States), to generate an RNase-free sample. A separate aliquot of the peripheral blood with anticoagulant was subjected to the density gradient centrifugation with Ficoll-Paque (GE Healthcare, Little Chalfont, United Kingdom), to isolate PBMCs. The cDNA synthesis was performed with random primers having as template RNA strands extracted from peripheral blood mononuclear cells and/or ultracentrifuged serum, using the enzyme M-MVL reverse transcriptase (Invitrogen™), following the manufacturer's specifications.

Detection of HCV RNA in the ultracentrifuged serum and PBMCs was performed by PCR prepared with 100 ng of cDNA, 5 µM of the primers specific for amplification

of the HCV genome (UTRLC1: 5'-CAAGCACCTATCAGGCAGT-3'; UTRLC2: 5'-CTTCACGCAGAAAGCGTCTA-3'), 1 × PCR Rxn buffer (Invitrogen), 5 mmol/L MgCl<sub>2</sub>, and 10 pmol dNTPs. The reaction conditions consisted of an initial cycle of 10 min at 95 °C, followed by 30 cycles of 95 °C for 30 s, 55 °C for 30 s and 72 °C for 30 s, and with a final 5-min extension at 72 °C, performed in the SimpliAmp Thermal Cycler (Applied Biosystems Inc., Foster City, CA, United States). Positive and negative controls consisted of a sample of patients known to be positive for classic hepatitis C and the PCR mix without DNA addition, respectively. The amplified product was subjected to 2% agarose gel electrophoresis and visualized on the SYBR-safe gel through the L-PIX Transilluminator (Loccus, São Paulo, Brazil). The presence of a fragment of approximately 230 base pairs in the absence of nonspecific bands was considered a positive result. The positive result was confirmed by a new PCR from another aliquot of the patient's sample, using the same procedure.

### Statistical analysis

Numerical variables were represented by measures of central tendency and dispersion measures. The categorical variables were submitted to  $\chi^2$  test and Fisher's exact test to evaluate the occurrence of association between them. The Kolmogorov-Smirnov normality test was applied to the quantitative variables. When the normal distribution was evidenced, the Student t test was used. When the variable was non-normal the comparison was performed using Mann-Whitney (Non-Normal). STATA/SE 12.0 and Excel 2010 were used for data storage and processing. In all tests, 95% CIs were applied.

## RESULTS

We initially recruited 154 patients with creatinine clearance < 60 mL/min · 1.73 m<sup>2</sup> as potential participants for the study; of those, 130 were enrolled, including 24 patients who had follow-up time of < 3 mo. Ultimately, 39 of the enrolled patients were excluded from study participation, for presence of glomerulopathies ( $n = 23$ ), refusal to participate ( $n = 7$ ), positivity in HIV serology ( $n = 3$ ), positivity for anti-HCV ( $n = 3$ ), positivity for HBsAg ( $n = 2$ ), and impossibility of venipuncture ( $n = 1$ ).

The demographic, clinical and laboratory characteristics of the 91 study participants are described in Table 1. The prevalence of OCI among them was 16.5% (15/91), including 14 cases for who the HCV RNA positivity was identified in the PBMCs and 1 with positivity in the ultracentrifuged serum. Figure 1 shows an electrophoresis of a patients positive for OCI.

OCI showed an age relationship, since older patients presented a higher risk of infection compared to younger patients ( $69.4 \pm 7.9$  vs  $60.9 \pm 13.5$ ,  $P = 0.002$ ). CKD of mixed etiology was observed in 11 of the 15 cases (73.3%) of OCI and was much more frequent than in cases without OCI ( $P = 0.019$ ). No relationship was found between the occurrence of OCI and sex, skin color or stage of CKD. There was no difference between serum levels of aminotransferases between the groups with and without OCI neither with albumin, bilirubin or gamma glutamyl transferase serum levels.

Risk factors associated with viral hepatitis transmission were also tested (previous HD, use of injectable drugs, occupational exposure, contaminated family member, history of hemotransfusion, piercing, tattoo, acupuncture, sexually transmitted infection, and condom use). None showed an association to the occurrence of OCI.

Of the 91 total patients evaluated, 2 provided an insufficient sample for assessment of HBV antibodies. Thus, of the 89 patients analyzed, 75 (84.2%) were anti-HBc negative, 9 (9.8%) were anti-HBc positive, and 5 (5.5%) were undetermined. A total of 4 out of the 5 patients with undetermined anti-HBc were positive for anti-HBs and were considered as having had previous contact with HBV. A total of 31 patients were anti-HBs positive only and this antibody was not found more frequently in OCI patients ( $P = 0.59$ ); however, the presence of total anti-HBc and anti-HBs in combination (indicating previous HBV infection) was more frequent in patients with OCI, when compared to uninfected patients ( $P = 0.001$ ), as shown in Table 2.

## DISCUSSION

This was the first study to describe the occurrence of OCI in patients with PDCKD. It was previously known that patients with PDCKD present a higher occurrence of HCV infection in the classic form than the general population, with reported prevalence rates range from 3.9% to 7.3% and being up to seven times higher than in the control populations studied<sup>[12-14]</sup>.



**Table 1** Distribution of clinical parameters according to the occurrence of occult hepatitis C virus infection in 91 patients with chronic kidney disease: 2015 to 2017

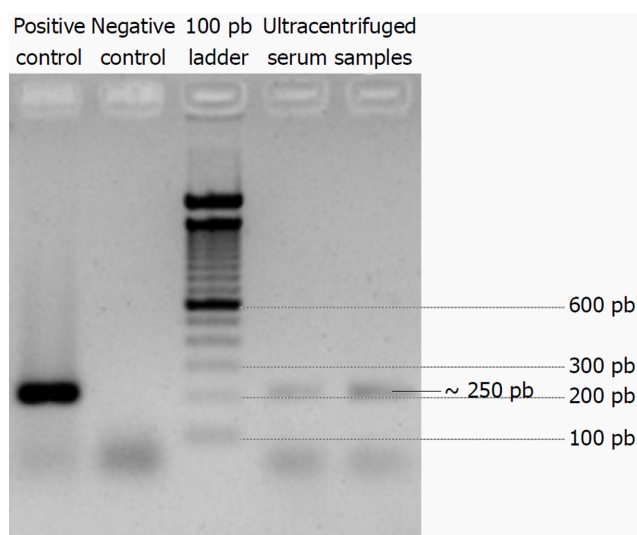
	Total (%), <i>n</i> = 91	Occult hepatitis C infection		<i>P</i> -value
		Yes (%), <i>n</i> = 15	No (%), <i>n</i> = 76	
Age	62.4 ± 13.1	69.4 ± 7.9	60.9 ± 13.5	0.002 <sup>1</sup>
Age ≥ 60 yr				0.001 <sup>1</sup>
Yes	59 (64.8)	15 (100)	44 (57.9)	
No	32 (35.2)	0 (0)	32 (42.1)	
Sex				0.323 <sup>2</sup>
Male	44 (48.4)	9 (60)	35 (46.1)	
Female	47 (51.6)	6 (40)	41 (53.9)	
Ethnicity				0.719 <sup>1</sup>
Mixed	50 (54.9)	7 (46.7)	43 (56.6)	
Caucasian	30 (33.0)	6 (40.0)	24 (31.6)	
African Americans	11 (12.1)	2 (13.3)	9 (11.8)	
BMI	27.1 ± 4.4	27.4 ± 4.7	27.0 ± 4.3	0.750 <sup>1</sup>
GFR	21.6 ± 10.3	24.6 ± 10.6	21.0 ± 10.2	0.231 <sup>1</sup>
CKD stage				0.580 <sup>2</sup>
IIIa	2 (2.2)	0 (0)	2 (2.7)	
IIIb	22 (24.4)	6 (40.0)	16 (21.3)	
IV	38 (42.2)	5 (33.3)	33 (44.0)	
V	28 (31.1)	4 (26.7)	24 (32.0)	
Etiology of CKD				0.019 <sup>2</sup>
Mixed	31 (34.1)	11 (73.3)	20 (26.3)	
DM	26 (28.6)	1 (6.70)	25 (32.9)	
HA	19 (20.9)	3 (20.0)	16 (21.1)	
ADPKD	7 (7.70)	0 (0)	7 (9.20)	
Others	1 (1.1)	0 (0)	1 (1.3)	
ALT <sup>e</sup>	18.1 (14.2; 23.2)	17.9 (15.2; 20.9)	18.1 (14.2; 24.7)	0.859
AST <sup>e</sup>	19.5 (16.6; 24.8)	18.1 (17; 22.6)	19.5 (16.6; 25.3)	0.713

<sup>1</sup>Student's *t* test;<sup>2</sup>Fisher's exact test; ADPKD: Autosomal dominant polycystic kidney disease; ALT: Alanine aminotransferase; AST: Aspartate aminotransferase; BMI: Body mass index; CKD: Chronic kidney disease; DM: Diabetes mellitus; GFR: Glomerular filtration rate; HA: Hypertension.

One of the possible reasons underlying the high prevalence of OCI (16.5%) in our study could be the low sensitivity of the ELISA tests used, that is, false negative anti-HCV results. However, in this study, patients underwent at least two anti-HCV screenings, with the first one in the diagnosis of CKD and the second as an inclusion criterion for this study. Along with both having negative results, a third-generation immunoenzymatic assay was employed, which shows close to 100% accuracy<sup>[19]</sup>. The other possibility would be the immunological deficiency of patients with ADCKD who would not be able to produce anti-HCV antibodies in detectable titers.

We could still consider the possibility of a false positive result in the PCR reaction to detect the HCV RNA in the PBMCs or ultracentrifuged serum; however, this is unlikely since the different steps in the procedure were performed in different environments under laminar flow with quality reagents. In addition, positive results were confirmed by a new PCR from another aliquot of the patient's blood sample, using the same technique for detection of HCV RNA.

In this study, we did not perform HCV RNA screening by PCR in the serum (non-ultracentrifuged) of all patients since our objective was not to identify patients with serum anti-HCV negativity and HCV RNA positivity. However, HCV RNA screening was performed in all patients' non-ultracentrifuged serum when HCV RNA was positive in PBMCs or in ultracentrifuged serum. Moreover, it would be unlikely to find patients with anti-HCV negativity and HCV RNA negativity in both PBMCs and in ultracentrifuged serum, but with positivity in non-ultracentrifuged serum. According to these parameters, then, we question the need for performing the HCV RNA screening by PCR of serum before RNA screening of PBMCs and



**Figure 1** Electrophoresis showing a positive sample visualized on the SYBR-safe gel through the L-PIX Transilluminator (Loccus, São Paulo, Brazil).

ultracentrifuged plasma for diagnostic confirmation of OCI.

The practical relevance of the findings from our study is uncertain. However, the high frequency of OCI found in our study population may play a significant role in the transmissibility of the disease within HD units once the patients do not have detectable antibodies and circulating virions, when they could potentially be infectious<sup>[20]</sup>. Moreover, the vast majority of patients (14/15) with OCI had viral genome components at detectable levels in PBMCs, making them potential transmitters of the infection<sup>[21]</sup>. These are intriguing findings since, in general, about 50% of HCV-infected patients do not have identifiable risk factors for HCV infection<sup>[22]</sup>.

Epidemiologically, a phylogenetic study conducted by Castillo *et al*<sup>[23]</sup> found that patients with OCI have high intrafamilial transmissibility. Moreover, Roque-Cuellar *et al*<sup>[24]</sup> evaluated the immunological response in the presence of OCI in heterosexual partners of patients with the classic form of infection; they found a specific CD4+ and CD8+ immune response and a higher prevalence of OCI in the partners compared to those with uninfected heterosexual partners. These findings were corroborated by Shazly *et al*<sup>[25]</sup>, who evaluated 50 partners of patients with positive anti-HCV in serum and found a about 4% prevalence rate for OCI, higher than expected in the general population.

In addition to the exclusion of patients with glomerulopathies (since this group may present a prevalence of OCI of up to 39%), our results are strengthened by the fact that two techniques were used to identify OCI: both the serum ultracentrifugation and the identification of the viral genome in PBMCs, which increases the chance of detection of OCI. In fact, Castillo *et al*<sup>[5]</sup> demonstrated that positivity for HCV in PBMCs by PCR corresponded to 82% of positive cases for OCI; in addition, when using ultracentrifugation, the number of positive patients increased. In none of the cases of that study was the examination of OCI positive by both techniques.

In our study, OCI was associated with age, mixed etiology CKD, and positivity for HBV antibodies (anti-HBc and anti-HBs), suggesting previous infection.

Certainly, older patients are more exposed to contamination during their longer lifetimes. These patients also have more comorbidities, as described in a meta-analysis published in 2016 by Alvarez *et al*<sup>[26]</sup>. Age has been characterized as an independent risk factor for acquisition of HCV infection<sup>[27]</sup>. In addition, a North American study found that about 75% of HCV-infected patients were born between the years of 1945 and 1965, representing the so-called Baby Boomer generation<sup>[28]</sup>.

Patients with CKD of mixed etiology are reported to have more comorbidities and, therefore, have greater chance of exposures to other diseased patients, such as those infected with hepatitis, in hospital settings and to diagnostic and therapeutic procedures, all known risk factors for HCV infection<sup>[29]</sup>. In fact, a case-control study conducted by Perez *et al*<sup>[30]</sup> in the United States, involving acute and symptomatic HCV infections in individuals over 55 years of age, found that exposure in a healthcare environment with intravenous drug infusion was related to a higher risk of HCV infection; namely, 2.7-fold higher than in the controls, with risk attributable to exposure of 37% (OR = 2.7, 95%CI: 1.3-5.8).

**Table 2** Distribution of antibodies against hepatitis B virus according to the occurrence of hepatitis C virus occult infection in 89 patients with chronic kidney disease: 2015 to 2017

	Total (%), <i>n</i> = 89	Occult HCV infection		P-value
		Yes (%), <i>n</i> = 14	No (%), <i>n</i> = 75	
Anti-HBs + anti-HBc total				
Positive	13 (14.6)	7 - 50	6 - 8	0.001 <sup>1</sup>
Anti-HBs (anti-HBc negative)				
Positive	31 (34.8)	4 (28.6)	27 - 36	0.590 <sup>1</sup>
Anti-HBs + anti-HBc total				
Negative	45 (50.6)	3 (21.4)	42 - 56	0.01 <sup>1</sup>

<sup>1</sup>Fisher's exact test. HBc: Hepatitis B core protein; HBs: Hepatitis B surface protein; HBV: Hepatitis B virus; HCV: Hepatitis C virus.

In our study, patients with OCI showed a higher frequency of positivity for anti-HBc and anti-HBs, when compared to those not infected. It is also known that patients with HCV infection present a higher chance of HBV contamination, since the risk factors for transmission of these infections are similar<sup>[31]</sup>.

Our study had some limitations that must be considered when interpreting our findings. Specifically, by not quantifying the viral load and not genotyping the patients, the epidemiological and transmissibility factors could not be determined for our study population of patients with OCI.

The reasons underlying the emergence of the occult form of HCV infection are not known. We can speculate that virus-related factors may be involved in this form of infection, as described in genomic studies where genetic variations between different viral strains of HCV constitute a mechanism of viral survival, contributing to their pathogenicity and resistance to the host's immune system<sup>[32,33]</sup>. We can also speculate that host-related factors may be involved in the occult form of HCV infection. Of course, the specific cellular immune response (CD4+ and CD8+) in patients with OCI would be less effective than in individuals without infection but more intense than in those with the classic form of disease, presenting with HCV RNA positivity in the serum<sup>[8]</sup>.

In addition, although most infected patients show a specific cellular immune response to HCV, only 20% of infected individuals are able to achieve viral clearance in the acute phase of the disease<sup>[34,35]</sup>. Indeed, Burke *et al.*<sup>[36]</sup> observed that patients who were unable to achieve viral clearance had lower cell responses and decreased numbers of CD4+ and CD8+ T lymphocytes. In addition, existing differences between the human leukocyte antigen (commonly known as HLA) molecules can target poorly effective immune responses, as some HLA super types affect the recognition and binding affinity of T lymphocytes to antigenic epitopes<sup>[37]</sup>.

Treatment of OCI can be performed with antiviral therapy, as reported by Pardo *et al.*<sup>[38]</sup>. Those authors administrated pegylated-interferon and ribavirin for 6 mo to 10 patients who presented with OCI and abnormalities in serum levels of aminotransferases that were associated with chronic hepatitis (diagnosed by biopsy). At the end of treatment, 6 patients presented normalization of the serum alanine aminotransferase levels and in 7 cases the HCV RNA was no longer detectable in the PBMCs, suggesting viral behavior similar to that of the classic HCV infection<sup>[38]</sup>.

In our study, presented herein, occurrence of OCI was high among patients with PDCKD. OCI in this patient population was more common in the elderly, in patients with CKD of mixed etiology and in patients with serological markers of HBV (indicating previous infection). Further studies will be needed to evaluate the influence of this form of infection on the transmissibility of HCV in the HD setting and the role of treatment for HD patients with OCI.

## ARTICLE HIGHLIGHTS

### Research background

Patients with chronic kidney disease (CKD) and who are on hemodialysis (HD) have a higher prevalence of hepatitis C virus (HCV) infection, both in its classical form and the occult (OCI) form. However, no studies in the literature have evaluated the occurrence of OCI in predialysis patients.

### Research motivation

The motivation of this study was borne of the new lines of evidence showing OCI having implications on transmissibility, prognosis and progression of CKD in patients on dialysis, and knowledge that this infection could be diagnosed and treated before end-stage kidney disease is reached.

### Research objectives

The main objective of this study was to evaluate the prevalence of OCI in predialysis CKD patients. The findings of this study could help in future efforts to trace the transmissibility of OCI and even to develop a treatment to improve these patients' prognosis.

### Research methods

This was a cross-sectional study, wherein patients were allocated if they had glomerular filtration rate < 60 mL/min 1.73 m<sup>2</sup> and were anti-HCV negative. PCR was performed on patient samples of ultracentrifuged plasma and peripheral blood mononuclear cells.

### Research results

OCI was found in 16.5% of the study population of CKD patients. It was more common in the elderly, in patients with CKD of mixed etiology, and in patients with previous hepatitis B virus infection.

### Research conclusions

This study found a high prevalence of OCI among CKD patients, suggesting that patients with low kidney function may be reservoirs for HCV. This high prevalence appears to be associated with infection occurring before the beginning of dialysis. Moreover, OCI could be an important transmission route of HCV infection in dialysis centers. The collective findings from this study could help future studies evaluating the transmissibility of hepatitis infection and the progression of CKD to need for dialysis.

### Research perspectives

This is the first study to evaluate the prevalence of OCI in this specific group of patients, who are more vulnerable to viral infections. Future research should evaluate the influence of this form of infection on the transmissibility of HCV in the HD setting and the role of treatment for these OCI patients. A prospective study evaluating the clinical behavior of patients with OCI will be insightful.

## ACKNOWLEDGEMENTS

We also thank the Aggeu Magalhães Laboratory, for making materials and staff available for this study.

## REFERENCES

- 1 **Castillo I**, Pardo M, Bartolomé J, Ortiz-Movilla N, Rodríguez-Iñigo E, de Lucas S, Salas C, Jiménez-Heffernan JA, Pérez-Mota A, Graus J, López-Alcorocho JM, Carreño V. Occult hepatitis C virus infection in patients in whom the etiology of persistently abnormal results of liver-function tests is unknown. *J Infect Dis* 2004; **189**: 7-14 [PMID: [14702147](#) DOI: [10.1086/380202](#)]
- 2 **Gad YZ**, Mouas N, Abdel-Aziz A, Abousmra N, Elhadidy M. Distinct immunoregulatory cytokine pattern in Egyptian patients with occult Hepatitis C infection and unexplained persistently elevated liver transaminases. *Asian J Transfus Sci* 2012; **6**: 24-28 [PMID: [22623838](#) DOI: [10.4103/0973-6247.95046](#)]
- 3 **Granieri C**, Bagaglio S, Loggi E, Porrino L, Cursaro C, Micco L, Grandini E, Bernardi M, Morsica G, Andreone P. High prevalence of occult hepatitis C virus infection in non alcoholic steatohepatitis and cryptogenetic liver diseases. *Dig Liver Dis* 2011; **43**: S91-92 [DOI: [10.1016/S1590-8658\(11\)60083-2](#)]
- 4 **Saad Y**. Prevalence of occult hepatitis C in egyptian patients with non alcoholic fatty liver disease. *Open J Intern Med* 2011; **1**: 33-37 [DOI: [10.4236/ojim.2011.12009](#)]
- 5 **Castillo I**, Martínez-Ara J, Olea T, Bartolomé J, Madero R, Hernández E, Bernis C, Aguilar A, Quiroga JA, Carreño V, Selgas R. High prevalence of occult hepatitis C virus infection in patients with primary and secondary glomerular nephropathies. *Kidney Int* 2014; **86**: 619-624 [PMID: [24646855](#) DOI: [10.1038/ki.2014.68](#)]
- 6 **Youssef SS**, Nasr AS, El Zanaty T, El Rawi RS, Mattar MM. Prevalence of occult hepatitis C virus in egyptian patients with chronic lymphoproliferative disorders. *Hepat Res Treat* 2012; **2012**: 429784 [PMID: [23304473](#) DOI: [10.1155/2012/429784](#)]
- 7 **Barril G**, Castillo I, Arenas MD, Espinosa M, Garcia-Valdecasas J, Garcia-Fernández N, González-Parra E, Alcazar JM, Sánchez C, Díez-Baylón JC, Martínez P, Bartolomé J, Carreño V. Occult hepatitis C virus infection among hemodialysis patients. *J Am Soc Nephrol* 2008; **19**: 2288-2292 [PMID: [18684893](#) DOI: [10.1681/ASN.2008030293](#)]
- 8 **Quiroga JA**, Llorente S, Castillo I, Rodríguez-Iñigo E, Pardo M, Carreño V. Cellular immune responses associated with occult hepatitis C virus infection of the liver. *J Virol* 2006; **80**: 10972-10979 [PMID: [17071928](#) DOI: [10.1128/JVI.00852-06](#)]
- 9 **Fissell RB**, Bragg-Gresham JL, Woods JD, Jadoul M, Gillespie B, Hedderwick SA, Rayner HC, Greenwood RN, Akiba T, Young EW. Patterns of hepatitis C prevalence and seroconversion in hemodialysis units from three continents: the DOPPS. *Kidney Int* 2004; **65**: 2335-2342 [PMID: [15149347](#) DOI: [10.1111/j.1523-1755.2004.00649.x](#)]

- 10 **El-Shishtawy S**, Sherif N, Abdallah E, Kamel L, Shemis M, Saleem AA, Abdalla H, El Din HG. Occult Hepatitis C Virus Infection in Hemodialysis Patients; Single Center Study. *Electron Physician* 2015; **7**: 1619-1625 [PMID: [26816589](#) DOI: [10.19082/1619](#)]
- 11 **Bergman S**, Accortt N, Turner A, Glaze J. Hepatitis C infection is acquired pre-ESRD. *Am J Kidney Dis* 2005; **45**: 684-689 [PMID: [15806471](#) DOI: [10.1053/j.ajkd.2004.12.014](#)]
- 12 **Lemos LB**, Perez RM, Lemos MM, Draibe SA, Silva IS, Silva AE, Ferraz ML. Hepatitis C among predialysis patients: prevalence and characteristics in a large cohort of patients. *Nephron Clin Pract* 2008; **108**: c135-c140 [PMID: [18230916](#) DOI: [10.1159/000114452](#)]
- 13 **Li Cavoli G**, Ferrantelli A, Bono L, Tortorici C, Giammarresi C, Zagarrigo C, Schillaci O, Tralongo A, Soresi M, Rotolo U. Incidence of hepatitis C virus infection in patients with chronic kidney disease on conservative therapy. *Int J Infect Dis* 2011; **15**: e514-e516 [PMID: [21680217](#) DOI: [10.1016/j.ijid.2011.04.001](#)]
- 14 **Iwasa Y**, Otsubo S, Sugi O, Sato K, Asamiya Y, Eguchi A, Iwasaki T, Matsuda N, Kikuchi K, Ikebe N, Miwa N, Kimata N, Uchida K, Uchida S, Nitta K, Akiba T. Patterns in the prevalence of hepatitis C virus infection at the start of hemodialysis in Japan. *Clin Exp Nephrol* 2008; **12**: 53-57 [PMID: [18175054](#) DOI: [10.1007/s10157-007-0005-6](#)]
- 15 **Sauné K**, Kamar N, Miédougé M, Weclawiak H, Dubois M, Izopet J, Rostaing L. Decreased prevalence and incidence of HCV markers in haemodialysis units: a multicentric French survey. *Nephrol Dial Transplant* 2011; **26**: 2309-2316 [PMID: [21097646](#) DOI: [10.1093/ndt/gfq696](#)]
- 16 **Sette LH**, Almeida Lopes EP. Liver enzymes serum levels in patients with chronic kidney disease on hemodialysis: a comprehensive review. *Clinics (Sao Paulo)* 2014; **69**: 271-278 [PMID: [24714836](#) DOI: [10.6061/clinics/2014\(04\)09](#)]
- 17 **Roth D**, Nelson DR, Bruchfeld A, Liapakis A, Silva M, Monsour H, Martin P, Pol S, Londoño MC, Hassanein T, Zamor PJ, Zuckerman E, Wan S, Jackson B, Nguyen BY, Robertson M, Barr E, Wahl J, Greaves W. Grazoprevir plus elbasvir in treatment-naïve and treatment-experienced patients with hepatitis C virus genotype 1 infection and stage 4-5 chronic kidney disease (the C-SURFER study): a combination phase 3 study. *Lancet* 2015; **386**: 1537-1545 [PMID: [26456905](#) DOI: [10.1016/S0140-6736\(15\)00349-9](#)]
- 18 **Levey AS**, Stevens LA, Schmid CH, Zhang YL, Castro AF, Feldman HI, Kusek JW, Eggers P, Van Lente F, Greene T, Coresh J; CKD-EPI (Chronic Kidney Disease Epidemiology Collaboration). A new equation to estimate glomerular filtration rate. *Ann Intern Med* 2009; **150**: 604-612 [PMID: [19414839](#) DOI: [10.7326/0003-4819-150-9-200905050-00006](#)]
- 19 **Alborino F**, Burighel A, Tiller FW, van Helden J, Gabriel C, Raineri A, Catapano R, Stekel H. Multicenter evaluation of a fully automated third-generation anti-HCV antibody screening test with excellent sensitivity and specificity. *Med Microbiol Immunol* 2011; **200**: 77-83 [PMID: [20865278](#) DOI: [10.1007/s00430-010-0171-0](#)]
- 20 **Vidimliski PD**, Nikolov I, Geshkovska NM, Dimovski A, Rostaing L, Sikole A. Review: Occult hepatitis C virus infection: still remains a controversy. *J Med Virol* 2014; **86**: 1491-1498 [PMID: [24895180](#) DOI: [10.1002/jmv.23979](#)]
- 21 **Castillo I**, Rodríguez-Iñigo E, Bartolomé J, de Lucas S, Ortiz-Movilla N, López-Alcorocho JM, Pardo M, Carreño V. Hepatitis C virus replicates in peripheral blood mononuclear cells of patients with occult hepatitis C virus infection. *Gut* 2005; **54**: 682-685 [PMID: [15831916](#) DOI: [10.1136/gut.2004.057281](#)]
- 22 **Memon MI**, Memon MA. Hepatitis C: an epidemiological review. *J Viral Hepat* 2002; **9**: 84-100 [PMID: [11876790](#) DOI: [10.1046/j.1365-2893.2002.00329.x](#)]
- 23 **Castillo I**, Bartolomé J, Quiroga JA, Barril G, Carreño V. Hepatitis C virus infection in the family setting of patients with occult hepatitis C. *J Med Virol* 2009; **81**: 1198-1203 [PMID: [19475603](#) DOI: [10.1002/jmv.21483](#)]
- 24 **Roque-Cuellar MC**, Sánchez B, García-Lozano JR, Praena-Fernández JM, Núñez-Roldán A, Aguilar-Reina J. Cellular immune responses and occult infection in seronegative heterosexual partners of chronic hepatitis C patients. *J Viral Hepat* 2011; **18**: e541-e549 [PMID: [21914075](#) DOI: [10.1111/j.1365-2893.2011.01464.x](#)]
- 25 **El Shazly Y**, Hemida K, Rafik M, Al Swaff R, Ali-Eldin ZA, GadAllah S. Detection of occult hepatitis C virus among healthy spouses of patients with HCV infection. *J Med Virol* 2015; **87**: 424-427 [PMID: [25185940](#) DOI: [10.1002/jmv.24074](#)]
- 26 **Alvarez KJ**, Smaldone A, Larson EL. Burden of Hepatitis C Virus Infection Among Older Adults in Long-Term Care Settings: a Systematic Review of the Literature and Meta-Analysis. *Curr Infect Dis Rep* 2016; **18**: 13 [PMID: [26915098](#) DOI: [10.1007/s11908-016-0518-9](#)]
- 27 **Mindikoglu AL**, Miller RR. Hepatitis C in the elderly: epidemiology, natural history, and treatment. *Clin Gastroenterol Hepatol* 2009; **7**: 128-34; quiz 124 [PMID: [19084480](#) DOI: [10.1016/j.cgh.2008.07.017](#)]
- 28 **Smith BD**, Morgan RL, Beckett GA, Falck-Ytter Y, Holtzman D, Teo CG, Jewett A, Baack B, Rein DB, Patel N, Alter M, Yartel A, Ward JW; Centers for Disease Control and Prevention. Recommendations for the identification of chronic hepatitis C virus infection among persons born during 1945-1965. *MMWR Recomm Rep* 2012; **61**: 1-32 [PMID: [22895429](#)]
- 29 **Martínez-Bauer E**, Forns X, Armelles M, Planas R, Solà R, Vergara M, Fàbregas S, Vega R, Salmerón J, Diago M, Sánchez-Tapias JM, Bruguera M; Spanish Acute HCV Study Group. Hospital admission is a relevant source of hepatitis C virus acquisition in Spain. *J Hepatol* 2008; **48**: 20-27 [PMID: [17998149](#) DOI: [10.1016/j.jhep.2007.07.031](#)]
- 30 **Perz JF**, Grytdal S, Beck S, Fireteanu AM, Poissant T, Rizzo E, Bornschlegel K, Thomas A, Balter S, Miller J, Kleven RM, Finelli L. Case-control study of hepatitis B and hepatitis C in older adults: Do healthcare exposures contribute to burden of new infections? *Hepatology* 2013; **57**: 917-924 [PMID: [22383058](#) DOI: [10.1002/hep.25688](#)]
- 31 **Cooper C**, Kilby D. Clinical significance of hepatitis B core antibody positivity in HCV-infected and HCV/HIV coinfecting individuals. *Clin Infect Dis* 2004; **38**: 1335-1337 [PMID: [15127355](#) DOI: [10.1086/383155](#)]
- 32 **Park CW**, Cho MC, Hwang K, Ko SY, Oh HB, Lee HC. Comparison of quasispecies diversity of HCV between chronic hepatitis c and hepatocellular carcinoma by Ultradeep pyrosequencing. *Biomed Res Int* 2014; **2014**: 853076 [PMID: [24999482](#)]
- 33 **Humphreys IS**, von Delft A, Brown A, Hibbert L, Collier JD, Foster GR, Rahman M, Christian A, Klenerman P, Barnes E. HCV genotype-3a T cell immunity: specificity, function and impact of therapy. *Gut* 2012; **61**: 1589-1599 [PMID: [22337948](#) DOI: [10.1136/gutjnl-2011-300650](#)]
- 34 **Lechner F**, Wong DK, Dunbar PR, Chapman R, Chung RT, Dohrenwend P, Robbins G, Phillips R, Klenerman P, Walker BD. Analysis of successful immune responses in persons infected with hepatitis C



- virus. *J Exp Med* 2000; **191**: 1499-1512 [PMID: [10790425](#) DOI: [10.1084/jem.191.9.1499](#)]
- 35 **Cox AL**, Mosbruger T, Mao Q, Liu Z, Wang XH, Yang HC, Sidney J, Sette A, Pardoll D, Thomas DL, Ray SC. Cellular immune selection with hepatitis C virus persistence in humans. *J Exp Med* 2005; **201**: 1741-1752 [PMID: [15939790](#) DOI: [10.1084/jem.20050121](#)]
- 36 **Burke KP**, Cox AL. Hepatitis C virus evasion of adaptive immune responses: a model for viral persistence. *Immunol Res* 2010; **47**: 216-227 [PMID: [20066508](#) DOI: [10.1007/s12026-009-8152-3](#)]
- 37 **Kuniholm MH**, Kovacs A, Gao X, Xue X, Marti D, Thio CL, Peters MG, Terrault NA, Greenblatt RM, Goedert JJ, Cohen MH, Minkoff H, Gange SJ, Anastos K, Fazzari M, Harris TG, Young MA, Strickler HD, Carrington M. Specific human leukocyte antigen class I and II alleles associated with hepatitis C virus viremia. *Hepatology* 2010; **51**: 1514-1522 [PMID: [20169624](#) DOI: [10.1002/hep.23515](#)]
- 38 **Pardo M**, López-Alcorocho JM, Castillo I, Rodríguez-Iñigo E, Perez-Mota A, Carreño V. Effect of anti-viral therapy for occult hepatitis C virus infection. *Aliment Pharmacol Ther* 2006; **23**: 1153-1159 [PMID: [16611276](#) DOI: [10.1111/j.1365-2036.2006.02886.x](#)]

**P- Reviewer:** Cunha C, Kamal SA, Milovanovic T

**S- Editor:** Ma YJ **L- Editor:** A **E- Editor:** Tan WW





Published By Baishideng Publishing Group Inc  
7901 Stoneridge Drive, Suite 501, Pleasanton, CA 94588, USA  
Telephone: +1-925-2238242  
Fax: +1-925-2238243  
E-mail: [bpgoffice@wjgnet.com](mailto:bpgoffice@wjgnet.com)  
Help Desk: <https://www.f6publishing.com/helpdesk>  
<https://www.wjgnet.com>

