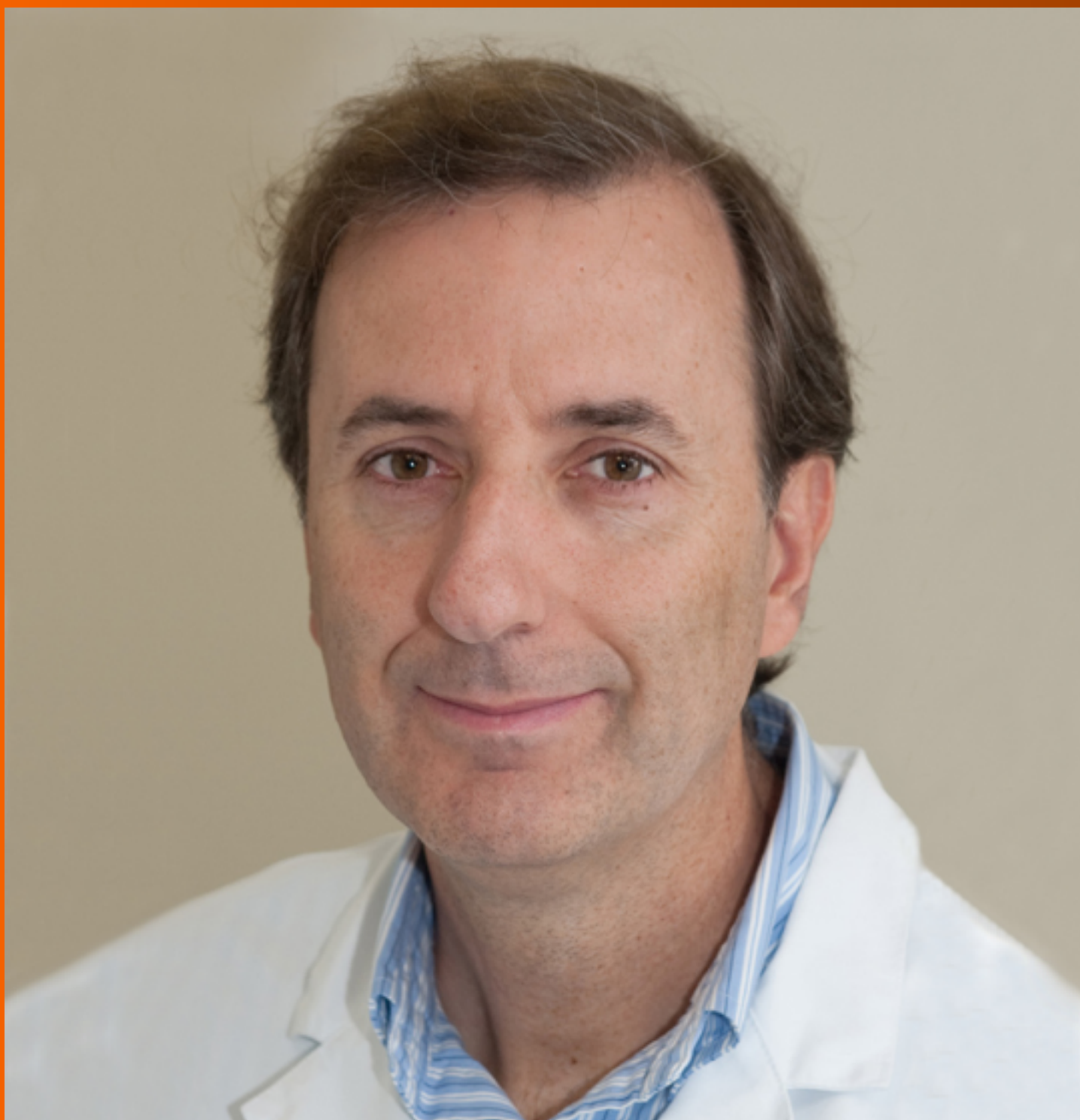


World Journal of *Clinical Cases*

World J Clin Cases 2019 March 6; 7(5): 548-690





ORIGINAL ARTICLE

Retrospective Study

- 548 Clinical presentation and early predictors for poor outcomes in pediatric myocarditis: A retrospective study
Rodriguez-Gonzalez M, Sanchez-Codez MI, Lubian-Gutierrez M, Castellano-Martinez A

Observational Study

- 562 Safety of an improved patent ductus arteriosus occluder for transcatheter closure of perimembranous ventricular septal defects with abnormally attached tricuspid chordae tendineae
He L, Du YJ, Cheng GS, Zhang YS

META-ANALYSIS

- 572 Adiponectin gene polymorphisms and risk of gestational diabetes mellitus: A meta-analysis
Huang LT, Wu SL, Liao X, Ma SJ, Tan HZ
- 585 Maternal serum level of resistin is associated with risk for gestational diabetes mellitus: A meta-analysis
Hu SM, Chen MS, Tan HZ
- 600 Docetaxel, cisplatin, and 5-fluorouracil compared with epirubicin, cisplatin, and 5-fluorouracil regimen for advanced gastric cancer: A systematic review and meta-analysis
Li B, Chen L, Luo HL, Yi FM, Wei YP, Zhang WX

CASE REPORT

- 616 Sustained complete response to erlotinib in squamous cell carcinoma of the head and neck: A case report
Thinn MM, Hsueh CT, Hsueh CT
- 623 Exercise-induced anaphylaxis with an Ayurvedic drug as cofactor: A case report
Losa F, Deidda M, Firinu D, Martino MLD, Barca MP, Giacco SD
- 628 Diagnostic detection with cardiac tomography and resonance of extremely rare coronary anomaly: A case report and review of literature
Schicchi N, Fogante M, Giuseppetti GM, Giovagnoni A
- 636 Fatal meningococcal meningitis in a 2-year-old child: A case report
Mularski A, Žaba C
- 642 Perioperative topical ascorbic acid for the prevention of phacoemulsification-related corneal endothelial damage: Two case reports and review of literature
Lee CY, Chen HT, Hsueh YJ, Chen HC, Huang CC, Meir YJJ, Cheng CM, Wu WC

- 650** Application of computer-assisted navigation in treating congenital maxillomandibular syngnathia: A case report
Lin LQ, Bai SS, Wei M
- 656** Concomitant paraganglioma and thyroid carcinoma: A case report
Lin B, Yang HY, Yang HJ, Shen SY
- 663** Rare empty sella syndrome found after postoperative hypotension and respiratory failure: A case report
Guo P, Xu ZJ, Hu CE, Zheng YY, Xu DF
- 668** Use of tunnel endoscopy for diagnosis of obscure submucosal esophageal adenocarcinoma: A case report and review of the literature with emphasis on causes of esophageal stenosis
Liu S, Wang N, Yang J, Yang JY, Shi ZH
- 676** Intrauterine cystic adenomyosis: Report of two cases
Fan YY, Liu YN, Li J, Fu Y
- 684** Melanotic Xp11-associated tumor of the sigmoid colon: A case report
Wang G, Li GG, Zhu SM, Cai BJ, Yu PJ, Zhang CW

ABOUT COVER

Editorial Board Member of *World Journal of Clinical Cases*, Manel Sabate, MD, PhD, Associate Professor, Interventional Cardiology Department, Clinic University Hospital, Barcelona 08036, Spain

AIMS AND SCOPE

World Journal of Clinical Cases (*World J Clin Cases*, *WJCC*, online ISSN 2307-8960, DOI: 10.12998) is a peer-reviewed open access academic journal that aims to guide clinical practice and improve diagnostic and therapeutic skills of clinicians.

The primary task of *WJCC* is to rapidly publish high-quality Case Report, Clinical Management, Editorial, Field of Vision, Frontier, Medical Ethics, Original Articles, Meta-Analysis, Minireviews, and Review, in the fields of allergy, anesthesiology, cardiac medicine, clinical genetics, clinical neurology, critical care, dentistry, dermatology, emergency medicine, endocrinology, family medicine, gastroenterology and hepatology, etc.

INDEXING/ABSTRACTING

The *WJCC* is now indexed in PubMed, PubMed Central, Science Citation Index Expanded (also known as SciSearch®), and Journal Citation Reports/Science Edition. The 2018 Edition of Journal Citation Reports cites the 2017 impact factor for *WJCC* as 1.931 (5-year impact factor: N/A), ranking *WJCC* as 60 among 154 journals in Medicine, General and Internal (quartile in category Q2).

**RESPONSIBLE EDITORS
FOR THIS ISSUE**

Responsible Electronic Editor: Ying-Na Bian Proofing Editorial Office Director: Jin-Lei Wang

NAME OF JOURNAL

World Journal of Clinical Cases

ISSN

ISSN 2307-8960 (online)

LAUNCH DATE

April 16, 2013

FREQUENCY

Semimonthly

EDITORS-IN-CHIEF

Dennis A Bloomfield, Sandro Vento

EDITORIAL BOARD MEMBERS

<https://www.wjgnet.com/2307-8960/editorialboard.htm>

EDITORIAL OFFICE

Jin-Lei Wang, Director

PUBLICATION DATE

March 6, 2019

COPYRIGHT

© 2019 Baishideng Publishing Group Inc

INSTRUCTIONS TO AUTHORS

<https://www.wjgnet.com/bpg/gerinfo/204>

GUIDELINES FOR ETHICS DOCUMENTS

<https://www.wjgnet.com/bpg/GerInfo/287>

GUIDELINES FOR NON-NATIVE SPEAKERS OF ENGLISH

<https://www.wjgnet.com/bpg/gerinfo/240>

PUBLICATION MISCONDUCT

<https://www.wjgnet.com/bpg/gerinfo/208>

ARTICLE PROCESSING CHARGE

<https://www.wjgnet.com/bpg/gerinfo/242>

STEPS FOR SUBMITTING MANUSCRIPTS

<https://www.wjgnet.com/bpg/GerInfo/239>

ONLINE SUBMISSION

<https://www.f6publishing.com>

Adiponectin gene polymorphisms and risk of gestational diabetes mellitus: A meta-analysis

Lin-Ting Huang, Shi-Lan Wu, Xin Liao, Shu-Juan Ma, Hong-Zhuan Tan

ORCID number: Lin-Ting Huang (0000-0002-7352-9832); Shi-Lan Wu (0000-0003-0473-1313); Xin Liao (0000-0002-9640-8638); Shu-Juan Ma (0000-0002-7858-067X); Hong-Zhuan Tan (0000-0002-4292-5947).

Author contributions: Huang LT conceived the study, acquired, analyzed, and interpreted the data, and drafted the manuscript; Wu SL and Xin L acquired, analyzed, and interpreted the data and revised the manuscript; Ma SJ interpreted the data and revised the manuscript; Tan HZ conceived and designed the study and critically revised the manuscript. All author approved the final version of the manuscript.

Supported by the National Nature Science Foundation of China, No. 81773535.

Conflict-of-interest statement: The authors deny any conflict of interest.

Open-Access: This article is an open-access article which was selected by an in-house editor and fully peer-reviewed by external reviewers. It is distributed in accordance with the Creative Commons Attribution Non Commercial (CC BY-NC 4.0) license, which permits others to distribute, remix, adapt, build upon this work non-commercially, and license their derivative works on different terms, provided the original work is properly cited and the use is non-commercial. See: <http://creativecommons.org/licenses/by-nc/4.0/>

Manuscript source: Unsolicited

Lin-Ting Huang, Shi-Lan Wu, Xin Liao, Shu-Juan Ma, Hong-Zhuan Tan, Department of Epidemiology and Health Statistics, Xiangya School of Public Health, Central South University, Changsha 410083, Hunan Province, China

Corresponding author: Hong-Zhuan Tan, MD, PhD, Professor, Xiangya School of Public Health, Central South University, Changsha 410008, Hunan Province, China. tanhz99@qq.com

Telephone: +86-731-88858435

Fax: +86-731-84805454

Abstract

BACKGROUND

Adiponectin (ADIPOQ) is an important factor involved in the regulation of both carbohydrate and lipid metabolism. Polymorphisms in the *ADIPOQ* gene are known to influence an individual's predisposition to metabolic syndrome and type 2 diabetes. Moreover, women with gestational diabetes mellitus (GDM) are at an increased risk of developing type 2 diabetes. Several studies have been conducted previously to assess the association between *ADIPOQ* polymorphisms and GDM; however, the results of the association are inconclusive.

AIM

To quantitatively evaluate the association between *ADIPOQ* +45T/G, +276G/T, and -11377C/G polymorphisms and the risk of GDM.

METHODS

A systematic search of EMBASE, PubMed, CNKI, Web of Science, and WANFANG DATA was conducted up to October 20, 2018. We calculated merged odds ratios (ORs) with 95% confidence intervals (CIs) using a fixed-effects or random-effects model depending on the between-study heterogeneity to evaluate the association between *ADIPOQ* +45T/G, +276G/T, and -11377C/G polymorphisms and the risk of GDM. Subgroup analysis was performed by ethnicity. Publication and sensitivity bias analyses were performed to test the robustness of the association. All statistical analyses were conducted using Stata12.0.

RESULTS

Nine studies of +45T/G included 1024 GDM cases and 1059 controls, five studies of +276G/T included 590 GDM cases and 595 controls, and five studies of -11377C/G included 722 GDM cases and 791 controls. Pooled ORs indicated that +45T/G increased GDM risk in Asians (allelic model: OR = 1.47, 95% CI: 1.27-1.70,

manuscript

Received: November 20, 2018**Peer-review started:** November 21, 2018**First decision:** December 15, 2018**Revised:** December 24, 2018**Accepted:** January 3, 2019**Article in press:** January 3, 2019**Published online:** March 6, 2019

$P = 0.000$; dominant model: OR = 1.54, 95%CI: 1.27-1.85, $P = 0.000$; recessive model: OR=2.00, 95%CI: 1.43-2.85, $P = 0.000$), not in South Americans (allelic model: OR = 1.21, 95%CI: 0.68-2.41, $P = 0.510$; dominant model: OR = 1.13, 95%CI: 0.59-2.15, $P = 0.710$; recessive model: OR = 2.18, 95%CI: 0.43-11.07, $P = 0.350$). There were no significant associations between +276G/T (allelic model: OR = 0.88, 95%CI: 0.74-1.05, $P = 0.158$; dominant model: OR = 0.91, 95%CI: 0.65-1.26, $P = 0.561$; recessive model: OR = 0.82, 95%CI: 0.64-1.05, $P = 0.118$) or -11377C/G (allelic model: OR = 0.96, 95%CI: 0.72-1.26, $P = 0.750$; dominant model: OR = 1.00, 95%CI: 0.73-1.37, $P = 0.980$; recessive model: OR = 0.90, 95%CI: 0.61-1.32, $P = 0.570$) and the risk of GDM.

CONCLUSION

Our meta-analysis shows the critical role of the *ADIPOQ* +45T/G polymorphism in GDM, especially in Asians. Studies focused on delineating ethnicity-specific factors with larger sample sizes are needed.

Key words: Gestational diabetes mellitus; Single nucleotide; Polymorphism; Adiponectin; Gene; Meta-analysis

©The Author(s) 2019. Published by Baishideng Publishing Group Inc. All rights reserved.

Core tip: No consensus is available in the literature about the association of adiponectin gene polymorphisms and the risk of gestational diabetes mellitus (GDM). As far as we know, only +45T/G was involved in a previous meta-analysis with a small sample size and obvious heterogeneity. We evaluated the association between *ADIPOQ* +45T/G, +276G/T, and -11377C/G polymorphisms and GDM with a bigger sample size, less heterogeneity. Moreover, subgroup analysis was performed by ethnicity.

Citation: Huang LT, Wu SL, Liao X, Ma SJ, Tan HZ. Adiponectin gene polymorphisms and risk of gestational diabetes mellitus: A meta-analysis. *World J Clin Cases* 2019; 7(5): 572-584

URL: <https://www.wjgnet.com/2307-8960/full/v7/i5/572.htm>

DOI: <https://dx.doi.org/10.12998/wjcc.v7.i5.572>

INTRODUCTION

Gestational diabetes mellitus (GDM) is a condition of impaired glucose tolerance during pregnancy in women without a previous diagnosis of diabetes. It is associated with serious complications for both mother and child in the pre- and postnatal periods^[1]. Many kinds of risk factors contribute to GDM, such as ethnicity, genetics, family history, dietary habits, and physical activity^[1]. Obesity is a usual risk factor for GDM and can cause insulin resistance. Many biochemical mediators compounded in the adipose tissue and secreted in the circulatory system, such as resistin, adiponectin (*ADIPOQ*), and leptin, are suggested to correlate with obesity and insulin resistance^[2].

ADIPOQ is produced in the adipose tissue and modulates various metabolic processes, including lipid metabolism, glucose and fatty acid oxidation. This hormone decreases insulin resistance, improves lipid metabolism, and exerts anti-inflammatory properties. Decreased plasma *ADIPOQ* levels were observed in patients with type 2 diabetes (T2D), metabolic syndrome, and obesity^[3]. During normal pregnancy, *ADIPOQ* levels progressively decline, with its plasma concentration reaching even lower in GDM women^[1]. Previous studies suggested that *ADIPOQ* gene single nucleotide polymorphisms (SNPs) could influence the concentration of plasma *ADIPOQ* and subsequently insulin sensitivity^[4-6].

Studies have paid attention to the SNPs +45T/G in exon 2 and +276G/C in intron 2, -11391G/A, and -11377C/G in the promoter region. The two *ADIPOQ* linkage disequilibrium blocks are where these four variants located within. Block 1 comprises the promoter sequence spanning the region -14811 to -4120, and block 2 encompasses the exons in the region -450 to +4545^[2]. The conclusions of these studies have been disputed regarding whether the metabolic phenotypes of GDM are influenced by the variability at this locus and which polymorphisms contribute to this effect. For example, Low *et al*^[7] reported that a significant association was found between SNP

45T/G and GDM, and normal patients with the TT genotype had significantly higher plasma ADIPOQ levels compared to those with the TG or GG genotype. Beltcheva *et al*^[1] reported that -11377C/G is associated with GDM. According to Daher *et al*^[8], GDM is not associated with +45T/G and -11377C/G polymorphisms. Reasons for the conflicting results are small sample sizes in a single study and the hereditary difference of ethnicity.

As the results are discrepant and +45T/G was the only polymorphism which participated in the meta-analysis, our study was meant to evaluate whether and to what extent ADIPOQ gene polymorphisms contribute to GDM.

MATERIALS AND METHODS

Literature search strategy

Electronic databases PubMed, EMBASE, Web of Science, WANFANG DATA, and CNKI were used to search possibly association articles on human genetic studies of ADIPOQ and GDM that had been published up to 20 October 2018. The search terms used were: "Gestational diabetes mellitus" or "GDM" and "adiponectin" or "ADIPOQ" and "single nucleotide polymorphism" or "polymorphism".

Selection criteria and data extraction

We searched the database and identified 87 articles. The selection criteria of the publications were as follow: (1) well-designed case control studies on genetic association of ADIPOQ and the risk of GDM; (2) clear diagnostic criteria for GDM; (3) independent and sufficient genotype data must be contained in the original papers and the data can calculate odds ratios (ORs) and 95% confidence intervals (CIs); and (4) there should be at least two articles that have studied each polymorphism that we used in our meta-analysis. During the selection, we removed 25 articles for duplicate publication and excluded 49 articles for review, animal studies, case reports with unrelated outcomes or other diseases, and articles with no ADIPOQ +45T/G, +276G/T, or -11377C/G reported.

Finally, 13 articles were adopted in this meta-analysis. Among them, nine studies investigated +45T/G, five studies investigated +276G/T, and five studies investigated -11377C/G. A flow diagram of study selection is presented in Figure 1.

Data were extracted by two researchers independently. We have extracted the following information from every included study: first author, year of publication, country, ethnicity, matching criteria, genotyping method, numbers of cases and controls, minor allele frequency in controls, and Hardy-Weinberg equilibrium (HWE) status. We obtained the HWE status of controls by calculating from genotype distributions using STATA12.0. The Newcastle-Ottawa quality assessment scale (NOS) was used for quality assessment of primary studies. The study would be regarded as a high-quality study when it had an NOS scores ≥ 6 (Table 1)^[9].

Statistical analysis

We used Stata12.0 software for statistical analyses. A fixed-effects or random-effects model was used to merge OR and 95% CI based on allelic models, recessive models, and dominant models to evaluate the association between each genetic variant and the risk of GDM. The Z-test was used for determining the significance of the merged OR. $P < 0.05$ was considered statistically significant.

We used the Cochran Q test to assess the heterogeneity among the studies and Higgins I^2 statistic for quantifying the heterogeneity. We used the random-effects model as the merging method when the variant association presented significant interstudy heterogeneity (Q test, P -value < 0.05 , or $I^2 > 50\%$), otherwise, we used the fixed-effects model. Subgroup analysis was performed based on the ethnicity of the study population to evaluate ethnic-specific effects. Publication bias was tested by Begg's funnel plot.

The statistical methods of this study were reviewed by Shi-Min Hu from Department of Epidemiology and Health Statistics, Xiangya School of Public Health, Central South University.

RESULTS

Main characteristics of all the included studies

Thirteen studies were adopted in this meta-analysis; among them, nine studies were about the association of +45T/G and GDM^[2,4,7,8,10-14], five studies were about the association of +276G/T and GDM^[4,10,12-14], and five studies were about the association of

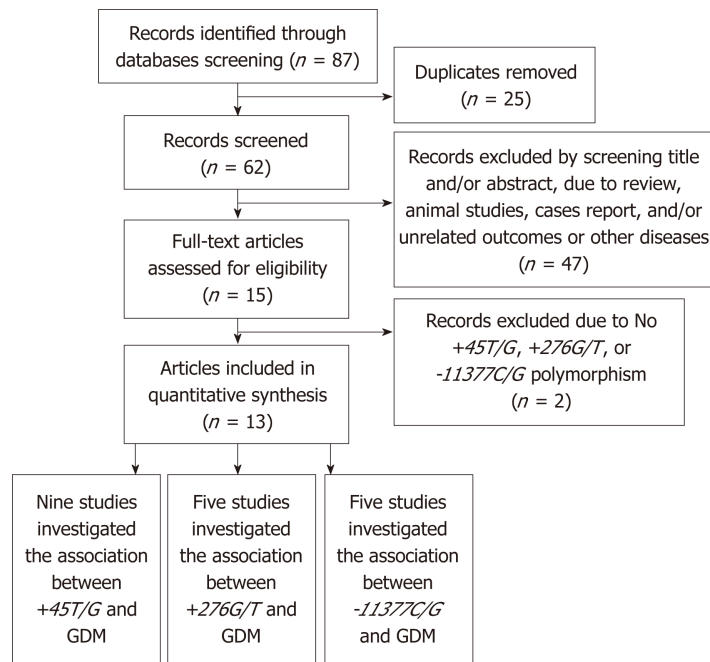


Figure 1 Flow diagram of study selection.

-11377C/G and GDM^[1,3,8,15,16]. In total, 1667 GDM cases and 1682 controls were included; ten studies were from Asian descendants^[2,4,7,10-15], two studies were from European descendants^[1,3], and one study was from a South American descendant^[8]. Detailed characteristics of all studies included are shown in [Table 2](#).

Association between +45T/G and GDM

Nine articles evaluated the association of +45T/G and GDM; eight of them were conducted in Asia and 1 in South America, with a total of 1024 GDM cases and 1059 controls. Heterogeneity test revealed $P > 0.05$ and $I^2 < 50\%$; the fixed-effects model was used.

The pooled results suggested a significant association between +45T/G and GDM (allelic model: OR = 1.45, 95%CI: 1.26-1.67; dominant model: OR = 1.50, 95%CI: 1.25-1.79; recessive model: OR = 2.00, 95%CI: 1.42-2.84). Ethnicity-based subgroup analysis showed that +45T/G was associated with GDM in Asians (allelic model: OR = 1.47, 95%CI: 1.27-1.70; dominant model: OR = 1.54, 95%CI: 1.27-1.85; recessive model: OR = 2.00, 95%CI: 1.43-2.85). However, there was no association of +45T/G with the risk of GDM in South Americans (allelic model: OR = 1.21, 95%CI: 0.68-2.41; dominant model: OR = 1.13, 95%CI: 0.59-2.15; recessive model: OR=2.18, 95%CI: 0.43-11.07) ([Figure 2](#) and [Table 3](#)).

Association between +276G/T and GDM

The association between +276G/T and the risk of GDM was investigated by five studies, including 590 GDM cases and 595 controls. Heterogeneity test revealed $P > 0.05$ and $I^2 < 50\%$, and the fixed-effects model was used.

The results showed that +276G/T was not associated with the risk of GDM (allelic model: OR = 0.88, 95%CI: 0.74-1.05; dominant model: OR = 0.91, 95%CI: 0.65-1.26; recessive model: OR = 0.82, 95%CI: 0.64-1.05) ([Figure 3](#) and [Table 3](#)).

Association between -11377C/G and GDM

The association between -11377C/G and the risk of GDM was investigated by five studies, of which two were conducted in Asia, two conducted in Europe, and one in South America, with a total of 722 GDM cases and 791 controls. Heterogeneity test revealed $P < 0.05$ and $I^2 > 50\%$; the random-effects model was used.

The results showed that -11377C/G was not associated with the risk of GDM (allelic model: OR = 0.96, 95%CI: 0.72-1.26; dominant model: OR = 1.00, 95%CI: 0.73-1.37; recessive model: OR = 0.90, 95%CI: 0.61-1.32). Ethnicity-based subgroup analysis also showed that -11377C/G was not associated with GDM in Asian (allelic model: OR = 1.04, 95%CI: 0.77-1.41; dominant model: OR = 1.09, 95%CI: 0.79-1.50; recessive model: OR = 0.97, 95%CI: 0.51-1.86), European (allelic model: OR = 0.94, 95%CI: 0.45-1.96; dominant model: OR = 1.00, 95%CI: 0.42-2.33; recessive model: OR = 0.87, 95%CI: 0.51-1.49) and South American populations (allelic model: OR = 0.80, 95%CI: 0.50-1.29;

Table 1 Quality assessment of included case control studies using the Newcastle-Ottawa scale

Author	Yr	Selection				Comparability		Exposure			Score
		Case definition	Case representativeness	Control selection	Control definition	Important confounders	Every confounders	Ascertainment	Consistency	Non-response rate	
Low <i>et al</i> ^[7]	2011	1	1	0	1	1	0	1	1	1	7
Takhshid <i>et al</i> ^[2]	2015	1	1	1	1	0	0	1	1	1	7
Daher <i>et al</i> ^[8]	2011	1	1	1	1	1	0	1	1	1	8
Han <i>et al</i> ^[4]	2012	1	1	0	1	1	0	1	1	1	7
Gao <i>et al</i> ^[10]	2016	1	1	1	1	1	0	1	1	1	8
Luan <i>et al</i> ^[13]	2015	1	1	1	1	1	0	1	1	1	8
Li <i>et al</i> ^[12]	2017	1	1	1	1	1	0	1	1	1	8
Li <i>et al</i> ^[11]	2013	1	1	1	1	0	0	1	1	1	7
Zhang <i>et al</i> ^[14]	2014	1	1	1	1	1	0	1	1	1	8
Beltcheva <i>et al</i> ^[1]	2014	1	1	0	1	1	0	1	1	1	7
Pawlik <i>et al</i> ^[3]	2017	1	1	1	1	0	0	1	1	1	7
Chen <i>et al</i> ^[15]	2011	1	1	1	1	0	0	1	1	1	7
Wang <i>et al</i> ^[16]	2016	1	1	1	1	0	0	1	1	1	7

The quality evaluation content mainly includes three aspects: case selection, baseline comparability, and exposure factors with nine evaluation items. If the evaluation item is met, 1 point is obtained, otherwise 0, and the score ranges from 0 to 9.

dominant model: OR = 0.77, 95%CI: 0.44-1.36; recessive model: OR = 0.81, 95%CI: 0.51-1.86) (Figure 4 and Table 3).

Publication bias

We used the Egger regression asymmetry test and Begg's funnel plot to assess the public bias of the studies. The evidence of publication bias cannot be found in the meta-analysis of +45T/G (allelic model: continuity corrected P -value = 1.000, Egger regression asymmetry test t = -0.62, P = 0.554; recessive model: continuity corrected P -value = 0.466, Egger regression asymmetry test t = -0.15, P = 0.883), +276G/T (allelic model: continuity corrected P -value = 0.26, Egger regression asymmetry test t = -1.24, P = 0.282) and -11377C/G (allelic model: continuity corrected P -value = 0.221, Egger regression asymmetry test t = -2.48, P = 0.089) (Figure 5).

Sensitivity analysis

To assess the stability of the results, we performed the sensitivity analysis by sequentially excluding individual studies for each meta-analysis. For the association between +45T/G, +276G/T, or -11377C/G and GDM, there was no significant change of corresponding merged ORs when one study was sequentially excluded from every meta-analysis. Therefore, the results of our meta-analysis are stable and reliable (Figure 6).

DISCUSSION

ADIPOQ has been considered an important factor in regulating glucose and lipid metabolism. It is secreted by adipose tissue, which has a negative correlation with insulin resistance, T2D, and metabolic syndrome. ADIPOQ can increase insulin sensitivity, anti-inflammation, and anti-atherosclerosis, promote glucose uptake in muscle tissue, and inhibit intrahepatic synthetic glucose^[17].

In the chromosomal region where the ADIPOQ gene is located, there are

Table 2 Detailed characteristics of all eligible studies for the association between *ADIPOQ* single nucleotide polymorphism and gestational diabetes mellitus

SNP	Author	Yr	Country	Ethnicity	Matching criteria	Method	Sample size		Genotype ¹		HWE
							Case	Control	Case	Control	
+45T/G	Low <i>et al</i> ^[7]	2011	Malaysia	Asian	NR	Taq PCR	26	53	11/13/2	35/17/1	0.51
	Takhshid <i>et al</i> ^[2]	2015	Iran	Asian	Age	PCR-RELF	65	70	37/28/0	54/16/0	0.28
	Daher <i>et al</i> ^[8]	2011	Brazil	SA	Race	PCR-RELF	79	169	61/15/3	134/32/3	0.51
	Han <i>et al</i> ^[4]	2012	China	Asian	NR	PCR-RELF	152	120	63/71/18	64/50/6	0.34
	Gao <i>et al</i> ^[10]	2016	China	Asian	Age, GW	PCR-RELF	150	150	59/66/25	81/57/12	0.66
	Luan <i>et al</i> ^[13]	2015	China	Asian	Age, GW	NR	60	60	33/21/6	29/26/5	0.81
	Li <i>et al</i> ^[12]	2017	China	Asian	Age, GW	PCR-RELF	130	130	53/63/14	63/60/7	0.13
	Li <i>et al</i> ^[11]	2013	China	Asian	NR	Sequencing	264	172	134/113/17	97/66/9	0.6
	Zhang <i>et al</i> ^[14]	2014	China	Asian	Age, BMI, GW	PCR-RELF	98	135	38/43/17	73/51/11	0.62
+276G/T	Han <i>et al</i> ^[4]	2012	China	Asian	NR	PCR-RELF	152	120	12/66/74	11/53/56	0.34
	Gao <i>et al</i> ^[10]	2016	China	Asian	Age, GW	PCR-RELF	150	150	15/69/66	15/60/75	0.66
	Luan <i>et al</i> ^[13]	2015	China	Asian	Age, GW	NR	60	60	7/26/27	3/25/32	0.81
	Li <i>et al</i> ^[12]	2017	China	Asian	Age, GW	PCR-RELF	130	130	64/58/8	60/56/14	0.13
	Zhang <i>et al</i> ^[14]	2014	China	Asian	Age, BMI, GW	PCR-RELF	98	135	10/45/43	13/54/68	0.62
-11377C/G	Beltcheva <i>et al</i> ^[1]	2014	Bulgaria	European	Age, BMI	TaqMan	130	130	80/44/6	66/50/14	0.34
	Pawlik <i>et al</i> ^[3]	2017	Poland	European	NR	TaqMan	204	207	92/91/21	115/75/17	0.34
	Daher <i>et al</i> ^[8]	2011	Brazil	SA	race	PCR-RELF	79	169	54/20/5	105/50/13	0.05
	Chen <i>et al</i> ^[15]	2011	China	Asian	NR	PCR-RELF	103	97	55/43/5	50/38/9	0.65
	Wang <i>et al</i> ^[16]	2016	China	Asian	NR	PCR-RELF	206	189	107/84/15	106/73/10	0.57

¹Genotype is presented as wild type/heterozygous/homozygous. *ADIPOQ*: Adiponectin; GDM: Gestational diabetes mellitus; SNP: Single nucleotide polymorphism; SA: South American; GW: Gestational week; PCR-RELF: Polymerase chain reaction-restriction fragment length polymorphism; BMI: Body mass index; HWE: Hardy-Weinberg equilibrium; NR: Not reported.

susceptible sites of T2D and metabolic syndrome, and its SNPs can affect the level of *ADIPOQ* in blood, leading to obesity, insulin resistance, and the occurrence of T2D^[15].

Plasma *ADIPOQ* levels gradually decreased with gestational week during pregnancy, consistent with the gradual decrease of insulin sensitivity^[3], and plasma adiponectin levels decreased more significantly in GDM women. This phenomenon is closely related to the decreased transcriptional activity of *ADIPOQ* during pregnancy. Previous studies revealed the association of *ADIPOQ* SNPs, such as +45T/G^[1,2,4,7,8,10-14], +276G/T^[1,4,10,12,13,18], -11377C/G^[1,3,8,15,16], -3971A/G^[13,19], and -11426A/G^[15,19], and the risk of GDM. A total of 66.7% (6 of 9) of the studies adopted in this meta-analysis reported that the +45T/G polymorphism increased the risk of GDM, and 40% (2 of 5) reported that the -11377C/G polymorphism was associated with GDM. A higher prevalence of the G allele was observed among women with GDM. All studies regarding +276G/T reported that this polymorphism had no association with the risk of GDM.

Thirteen studies were included in our study; nine studies were about +45T/G, with 1024 cases and 1059 controls, five studies were about +276G/T, with 590 cases and 595 controls, and five studies were about -11377C/G, with 722 cases and 791 controls. We not only had a larger sample size than previous studies but also performed subgroup analysis based on the ethnicity of the study population to evaluate ethnic-specific effects. +45T/G was proved by our meta-analysis to be a risk factor for GDM (allelic model: OR = 1.45, 95%CI: 1.26-1.67, $P = 0.000$), and 66.7% (6 of 9) of studies reported a positive result^[2,4,7,10,12,14]. Subgroup analysis showed that +45T/G was associated with GDM in Asians (allelic model: OR = 1.47, 95%CI: 1.27-1.70, $P = 0.000$) but not in South Americans. In addition, no association of +276G/T or -11377C/G and the risk of GDM was observed.

Obvious heterogeneity was detected among the -11377C/G studies (allelic model: $I^2 = 64.0\%$, $P = 0.03$, dominant model: $I^2 = 55.0\%$, $P = 0.06$, recessive model: $I^2 = 32.0\%$, $P = 0.21$). We used subgroup analysis based on ethnicity, and the heterogeneity could not be reduced, indicating that a small sample size and other reasons may have influenced the heterogeneity. The association of -11377C/G with the risk of GDM remains to be verified by further studies. No heterogeneity was found in the studies of +45T/G (allelic model: $I^2 = 14.3\%$, $P = 0.32$, dominant model: $I^2 = 18.1\%$, $P = 0.28$, recessive model: $I^2 = 0.0\%$, $P = 0.90$) and +276G/T (allelic model: $I^2 = 0.0\%$, $P = 0.74$,

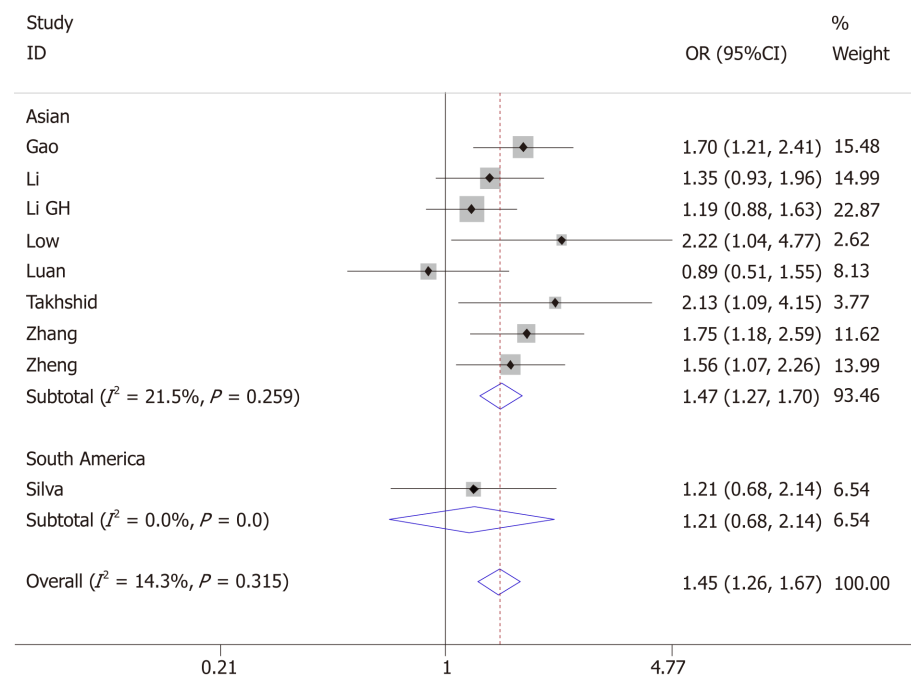


Figure 2 Forest plot for the association of *ADIPOQ* +45T/G polymorphism and gestational diabetes mellitus under the allelic model.

dominant model: $I^2 = 0.0\%$, $P = 0.78$, recessive model: $I^2 = 0.0\%$, $P = 0.83$), so the conclusion that +45T/G has, but +276G/T has no, association with the risk of GDM is relatively reliable. Begg's funnel plot was used to test publication bias. The test showed that there was no publication bias among the studies. Sensitivity analysis indicated that the results are stable and reliable.

The SNP +45T/G is a synonymous mutation (GGTGGG, Gly15Gly) at exon 2. The results of Yang *et al*^[20] indicated that +45T/G polymorphism may influence the expression of *ADIPOQ* by influencing RNA splicing and stability. Some studies reported that the G allele of +45T/G polymorphism in the *ADIPOQ* gene is associated with obesity, insulin resistance, and T2D in several populations. Very few studies have investigated the association of *ADIPOQ* +45T/G polymorphism with GDM and the results of these studies were controversial.

As far as we know, only +45T/G was involved in a previous meta-analysis that reported no association of *ADIPOQ* +45T/G polymorphism with the risk of GDM (allelic model: OR = 1.17, 95%CI: 0.79-1.76; dominant model: OR = 0.86, 95%CI: 0.50-1.48; recessive model: OR = 1.21, 95%CI: 0.62-2.33)^[21]. The reason for this controversy is most likely the following: (1) the small sample size (case number = 875, control number = 884); (2) obvious heterogeneity (all P -values for heterogeneity less than 0.01); and (3) false HWE status of 25% studies (2 of 8) involved in that meta-analysis will cause insufficient power which may lead to the false-negative results.

The role of +276G/T in the pathogenesis of metabolic syndrome and diabetes mellitus has also been reported to be contradictory. Commonly, the T allele has an association with a higher adiponectin level and protection against T2D^[22,23], but some studies showed that T carriers have a higher risk of obesity and diabetes^[24,25], or +276G/T polymorphism is not associated with T2D or GDM^[26].

All the studies on +276G/T polymorphism included in our study came from the Chinese population. This result suggests that +276G/T in the Chinese population may associate with the risk of GDM. The studies about the association between +276G/T and GDM from other countries could not be found. Geographical, environmental, and genetic factors of different ethnic groups lead to different susceptibility to diabetes; therefore, we need more studies about the association between +276G/T and GDM of other ethnic groups to reach reliable conclusions.

Zhang *et al*^[27] found that *ADIPOQ* gene promoter region has four transcription stimulatory protein (SP1) binding sites, while the G allele of -11377 C/G in the promoter region can change the DNA sequence of one of the SP1 binding sites, leading to the loss of binding force to SP1. This may reduce the *ADIPOQ* gene transcription activity, inhibit the expression of genes, and lead to lower plasma *ADIPOQ*, which could associate with glucolipid metabolic abnormalities and insulin resistance. Consistent with the results of Vasseur *et al*^[28], Petrone *et al*^[29] reported that -

Table 3 Main results of the pooled odds ratios in meta-analysis for the association between *ADIPOQ* polymorphisms and gestational diabetes mellitus

SNP	N	Sample size		Allelic model		Dominant model		Recessive model	
		Case	Control	OR (95%CI)	P	OR (95%CI)	P	OR (95%CI)	P
+45T/G									
Total	10	1024	1059	1.45 (1.26-1.67)	0.000 ^a	1.50 (1.25-1.79)	0.000 ^a	2.00 (1.42-2.84)	0.000 ^a
Subgroup									
Ethnicity									
Asian	8	945	890	1.47 (1.27-1.70)	0.000 ^a	1.54 (1.27-1.85)	0.000 ^a	2.00 (1.43-2.85)	0.000 ^a
SA	1	79	169	1.21 (0.68-2.41)	0.510	1.13 (0.59-2.15)	0.710	2.18 (0.43-11.07)	0.350
+276G/T									
Total	5	590	595	0.88 (0.74-1.05)	0.158	0.91 (0.65-1.26)	0.561	0.82 (0.64-1.05)	0.118
-11377C/G									
Total	5	722	791	0.96 (0.72-1.26)	0.750	1.00 (0.73-1.37)	0.980	0.90 (0.61-1.32)	0.570
Subgroup									
Ethnicity									
Asian	2	309	286	1.04 (0.77-1.41)	0.800	1.09 (0.79-1.50)	0.600	0.97 (0.51-1.86)	0.930
SA	1	79	168	0.80 (0.50-1.29)	0.360	0.77 (0.44-1.36)	0.370	0.81 (0.28-2.34)	0.690
European	2	334	337	0.94 (0.45-1.96)	0.870	1.00 (0.42-2.33)	0.990	0.87 (0.51-1.49)	0.610

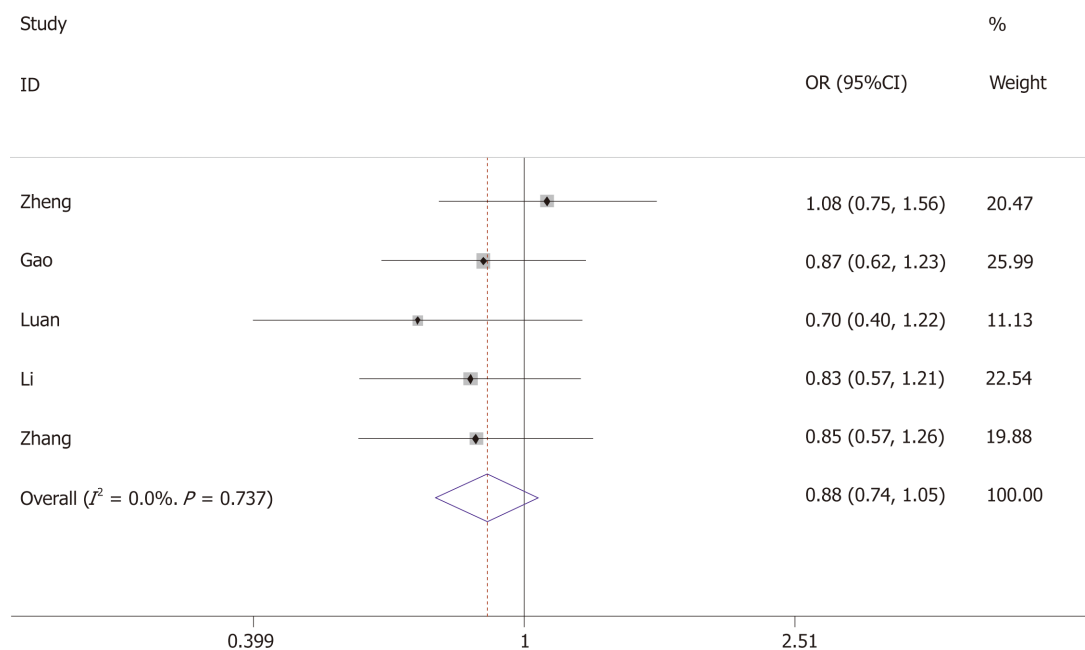
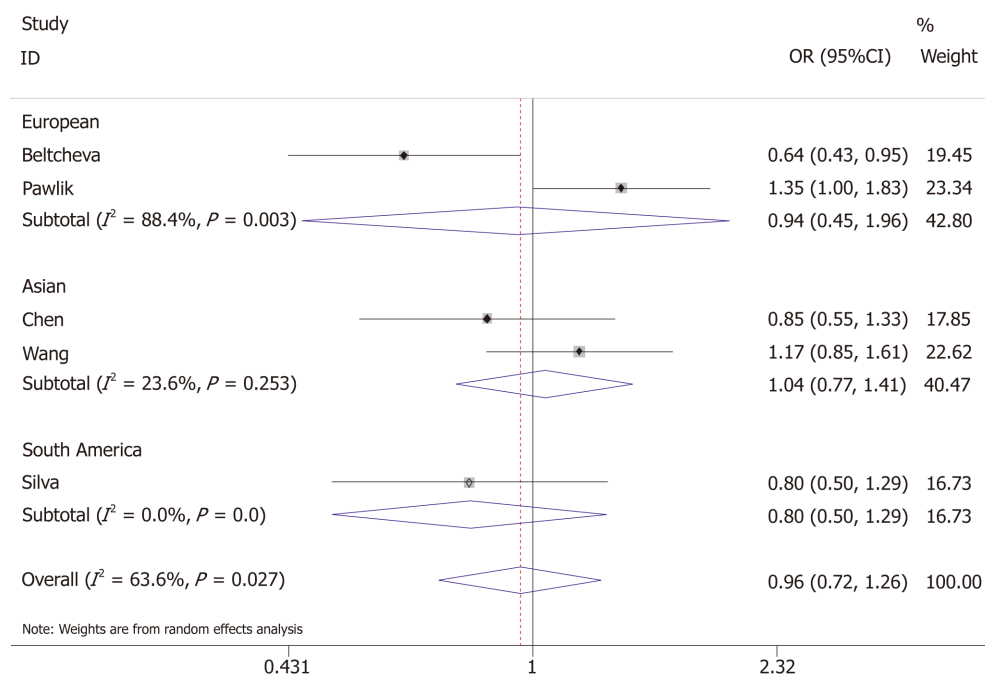
^aP < 0.01. ADIPOQ: Adiponectin; SA: South American; GDM: Gestational diabetes mellitus; SNP: Single nucleotide polymorphism; N: Number of studies; OR: Odds ratio; CI: Confidence interval; NA: Not assessable.

11377G haplotype is associated with low plasma ADIPOQ levels and T2D. However, due to ethnic and geographical differences, the results of studies on the association between *ADIPOQ* gene -11377C/G polymorphism and diabetes mellitus are not completely consistent^[20].

According to the literatures on -11377C/G polymorphism included in our studies, Asians accounted for 40%, Europeans for 40%, and South Americans for 20%. Due to the small sample size and large heterogeneity of each ethnic subgroup, our results, which are inconsistent with the previous studies, are unreliable.

The limitations of this study should be considered. First, the number of cases and controls involved in the meta-analysis for exploring the association of *ADIPOQ* and GDM in different ethnicities may have little power, and studies with larger sample sizes and multiple ethnicities are needed. Second, GDM has complicated cases, with genetic susceptibility, environmental triggers, and acquired dispositions, such as age, gestational weeks, condition of nutrition, and physique. In this meta-analysis, we failed to conduct a multivariate analysis of confounders. Therefore, further comprehensive studies with strict matching criteria for cases and controls are needed. Third, few studies have reported the association between polymorphisms and serum ADIPOQ levels, so genotype-phenotype analysis was prevented^[21].

In conclusion, our meta-analysis reveals the association of the *ADIPOQ* +45T/G polymorphism and the risk of GDM; this polymorphism increases GDM risk in Asian populations. Another two polymorphisms, +276G/T and -11377C/G, seem to have no association with the risk of GDM. Prospective studies of high quality with larger sample sizes are required to reveal the association of *ADIPOQ* polymorphisms with GDM, the existence of ethnicity-specific factors, and the role that ADIPOQ polymorphisms play in pathology.

Figure 3 Forest plot for the association of *ADIPOQ* +276G/T polymorphism and gestational diabetes mellitus under the allelic model.Figure 4 Forest plot for the association of *ADIPOQ* -11377C/G polymorphism and gestational diabetes mellitus under the allelic model.

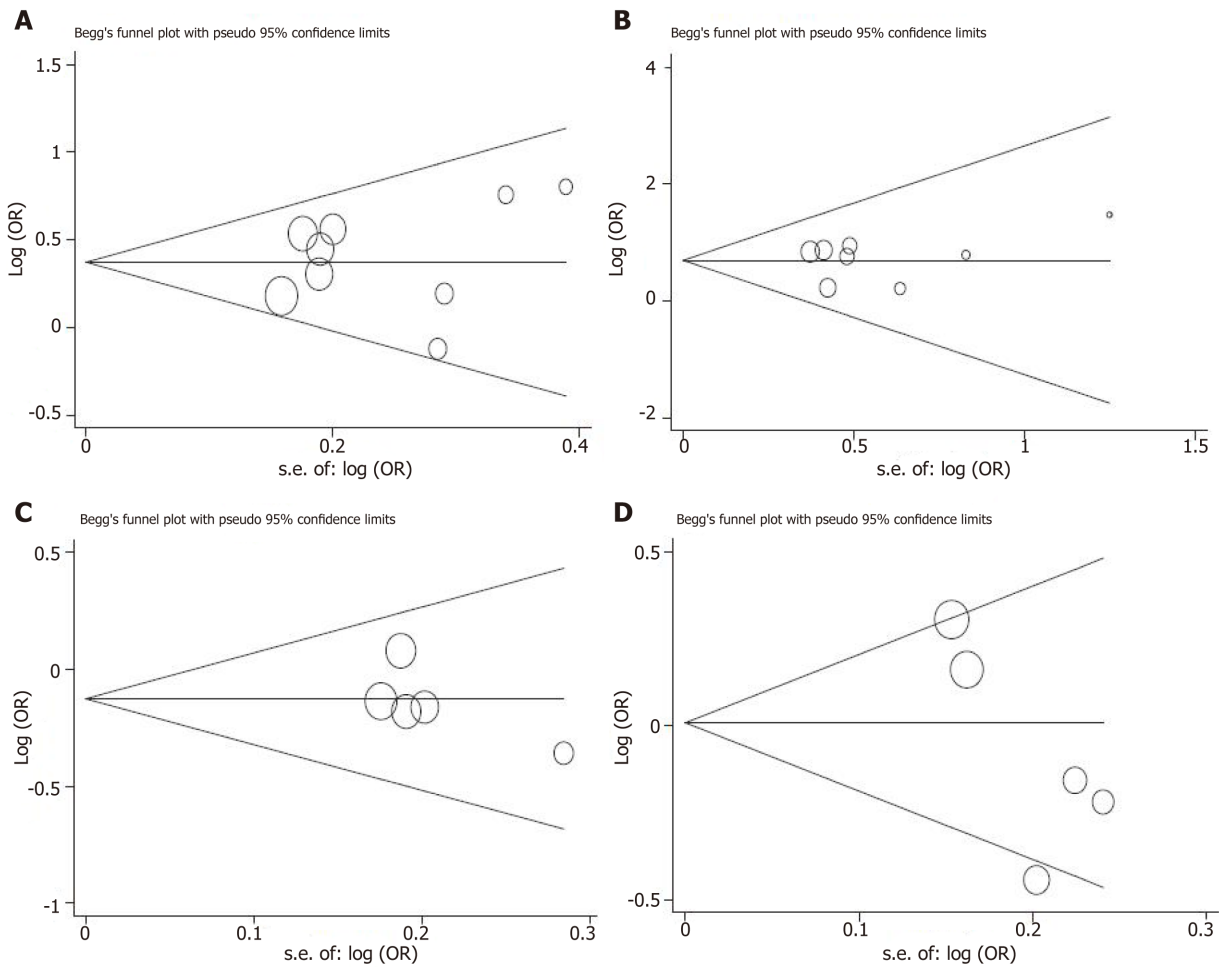


Figure 5 Begg's funnel plots for testing publication bias. A: +45T/G under allelic model; B: +45T/G under recessive model; C: +276G/T under allelic model; D: -11377C/G under allelic model. OR: Odds ratio.

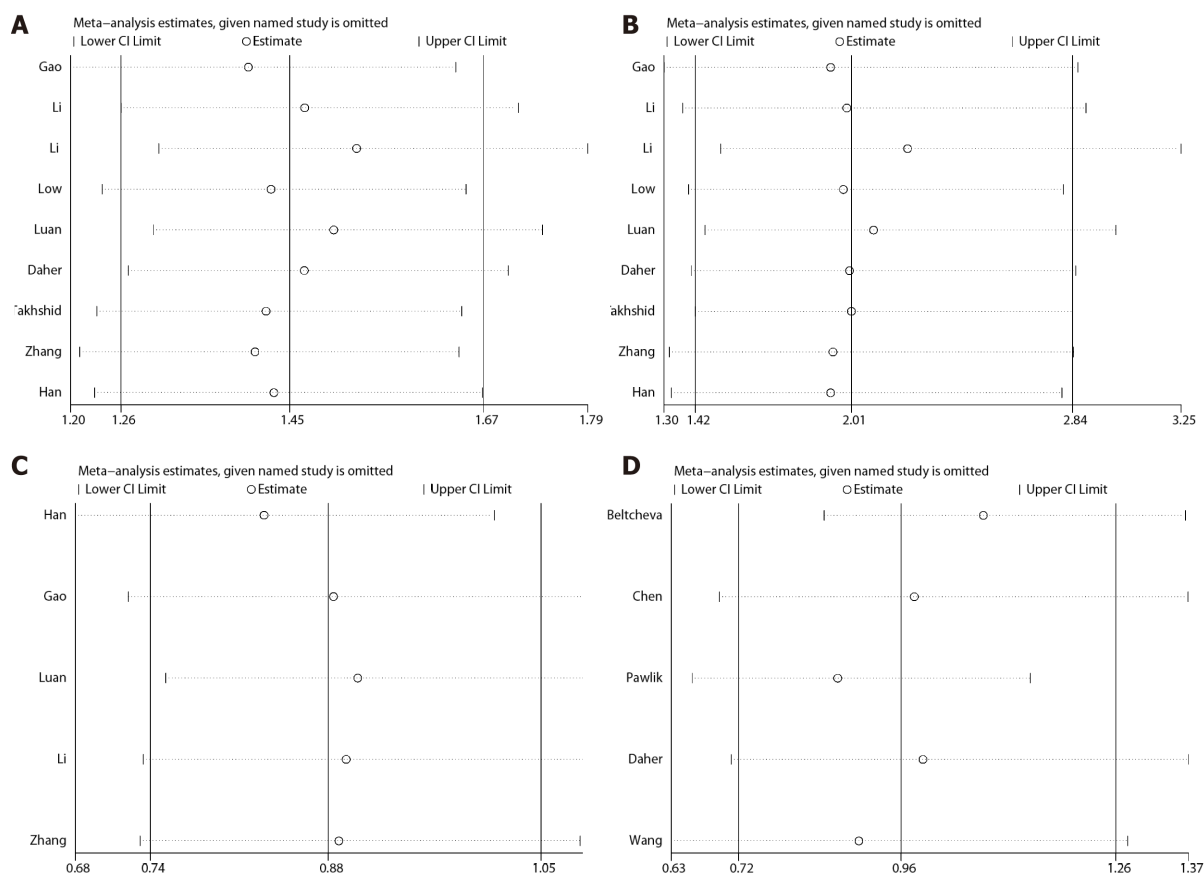


Figure 6 Sensitivity analysis between ADIPOQ polymorphisms and gestational diabetes mellitus in all studies. A: +45T/G under allelic model; B: +45T/G under recessive model; C: +276G/T under allelic model; D: -11377C/G under allelic model. CI: Confidence interval.

ARTICLE HIGHLIGHTS

Research background

Many biochemical mediators that are synthesized in the adipose tissue and secreted in the circulation, such as leptin, adiponectin (ADIPOQ), and resistin, are thought to be involved in obesity and insulin resistance. ADIPOQ is produced in the adipose tissue and regulates a variety of metabolic processes such as lipid metabolism, glucose and fatty acid oxidation. This hormone can reduce insulin resistance, improve lipid metabolism, and exert anti-inflammatory effects. Plasma ADIPOQ levels are decreased in patients with type 2 diabetes, metabolic syndrome, and obesity. Previous studies have shown that ADIPOQ single nucleotide polymorphisms can affect plasma ADIPOQ concentrations, which in turn affect insulin sensitivity.

Research motivation

Previous studies have evaluated the relationship between ADIPOQ polymorphisms and gestational diabetes mellitus (GDM), but the results of the association between ADIPOQ polymorphisms and GDM is uncertain.

Research objectives

We evaluated the association between ADIPOQ +45T/G, +276G/T, and -11377C/G polymorphisms and GDM with a bigger sample size and less heterogeneity. Moreover, subgroup analysis was performed by ethnicity.

Research methods

Potentially related articles on human fat metabolism and GDM gene research published before October 20, 2018 were retrieved through the electronic databases EMBASE, Web of Science, PubMed, WANFANG DATA, and China National Knowledge Infrastructure. A fixed-effects or random-effects model was used to calculate pooled odds ratios (ORs) with 95% confidence intervals (CIs), based on the between-study heterogeneity to evaluate the association between ADIPOQ +45T/G, +276G/T, and -11377C/G polymorphisms and the risk of GDM.

Research results

Nine +45T/G studies included 1024 GDM cases and 1059 controls, five +276G/T studies included 590 GDM cases and 595 controls, and five -11377C/G studies included 722 GDM cases

and 791 controls. Pooled ORs showed that +45T/G increased Asian GDM risk (allele model OR = 1.47, 95%CI: 1.27-1.70, $P = 0.000$; dominant model OR = 1.54, 95%CI: 1.27-1.85, $P = 0.000$; recessive mode: OR = 2.00, 95%CI: 1.43-2.85, $P = 0.000$), but not in South Americans (equal pattern: OR = 1.21, 95%CI: 0.68-2.41, $P = 0.510$; dominant model OR = 1.13, 95%CI: 0.59-2.15, $P = 0.710$; recessive mode OR = 2.18, 95%CI: 0.43-11.07, $P = 0.350$). There was no significant correlation between +276G/T (allele model OR = 0.88, 95%CI: 0.74-1.05, $P = 0.158$; dominant model OR = 0.91, 95%CI: 0.65-1.26, $P = 0.561$; recessive mode: OR = 0.82, 95%CI: 0.64-1.05, $P = 0.118$) or -11377C/G (equal pattern: OR = 0.96, 95%CI: 0.72-1.26, $P = 0.750$; dominant model OR = 1.00, 95%CI: 0.73-1.37, $P = 0.980$; recessive model: OR = 0.90, 95%CI: 0.61-1.32, $P = 0.570$) and GDM risk.

Research conclusions

Our meta-analysis reveals the association of the *ADIPOQ* +45T/G polymorphism and the risk of GDM; this polymorphism increases GDM risk in Asian populations.

Research perspectives

In order to reveal the association of *ADIPOQ* polymorphisms with GDM, the existence of ethnicity-specific factors, and the role that *ADIPOQ* polymorphisms play in pathology, studies focused on delineating ethnicity-specific factors with larger sample sizes are needed.

REFERENCES

- 1 Beltcheva O, Boyadzhieva M, Angelova O, Mitev V, Kaneva R, Atanasova I. The rs266729 single-nucleotide polymorphism in the adiponectin gene shows association with gestational diabetes. *Arch Gynecol Obstet* 2014; **289**: 743-748 [PMID: 24068295 DOI: 10.1007/s00404-013-3029-z]
- 2 Takhshid MA, Haem Z, Aboulizadeh F. The association of circulating adiponectin and + 45 T/G polymorphism of adiponectin gene with gestational diabetes mellitus in Iranian population. *J Diabetes Metab Disord* 2015; **14**: 30 [PMID: 25909078 DOI: 10.1186/s40200-015-0156-z]
- 3 Pawlik A, Teler J, Maciejewska A, Sawczuk M, Safranow K, Dziedziejko V. Adiponectin and leptin gene polymorphisms in women with gestational diabetes mellitus. *J Assist Reprod Genet* 2017; **34**: 511-516 [PMID: 28050671 DOI: 10.1007/s10815-016-0866-2]
- 4 Han Y, Zheng YL, Liu MH, Fan YP. Association of adiponectin gene single nucleotide polymorphism with gestational diabetes mellitus and pregnancy outcomes. *Shiyong Fuchanke Zazhi* 2012; **22**: 743-746
- 5 Hara K, Boutin P, Mori Y, Tobe K, Dina C, Yasuda K, Yamauchi T, Otabe S, Okada T, Eto K, Kadowaki H, Hagura R, Akanuma Y, Yazaki Y, Nagai R, Taniyama M, Matsubara K, Yoda M, Nakano Y, Tomita M, Kimura S, Ito C, Froguel P, Kadowaki T. Genetic variation in the gene encoding adiponectin is associated with an increased risk of type 2 diabetes in the Japanese population. *Diabetes* 2002; **51**: 536-540 [PMID: 11812766 DOI: 10.2337/diabetes.51.2.536]
- 6 Menzaghi C, Ercolino T, Di Paola R, Berg AH, Warram JH, Scherer PE, Trischitta V, Doria A. A haplotype at the adiponectin locus is associated with obesity and other features of the insulin resistance syndrome. *Diabetes* 2002; **51**: 2306-2312 [PMID: 12086965 DOI: 10.2337/diabetes.51.7.2306]
- 7 Low CF, Mohd Tohit ER, Chong PP, Idris F. Adiponectin SNP45TG is associated with gestational diabetes mellitus. *Arch Gynecol Obstet* 2011; **283**: 1255-1260 [PMID: 20552210 DOI: 10.1007/s00404-010-1548-4]
- 8 Daher S, Torloni MR, Gueuvoghlian-Silva BY, Moron AF, Mattar R. Inflammatory mediator gene polymorphisms and gestational diabetes: A review of the literature. *J Reprod Immunol* 2011; **90**: 111-116 [PMID: 21684013 DOI: 10.1016/j.jri.2011.04.008]
- 9 Stang A. Critical evaluation of the Newcastle-Ottawa scale for the assessment of the quality of nonrandomized studies in meta-analyses. *Eur J Epidemiol* 2010; **25**: 603-605 [PMID: 20652370 DOI: 10.1007/s10654-010-9491-z]
- 10 Gao Y, Wang W, Wang SS. Association of Adiponectin Gene Single Nucleotide Polymorphism with Gestational Diabetes Mellitus. *Jilin Yixue* 2016; **6**: 1301-1302
- 11 Li GH, Kong LJ, Zhang L, Zhang WY. [Association of adiponectin gene polymorphisms +45T/G with gestational diabetes mellitus and neonate birth weight]. *Zhonghua Yixue Zazhi* 2013; **93**: 3770-3772 [PMID: 24548395]
- 12 Li JY, Ma S, Zhao J, Duan LJ, Sun HY. The correlation between single nucleotide polymorphism of adiponectin gene and gestational diabetes and its effect on pregnancy outcome. *Zhongguo Fuyoubaojian Zazhi* 2017; **22**: 5674-5677
- 13 Luan YY, Guo XH, Yang JH. Study on the correlation between the damage of adiponectin gene polymorphism with gestational impaired glucose. *Zhongguo Shiyanzhenduanxue Zazhi* 2015; **19**: 1093-1096
- 14 Zhang C, Liang XX. The relationship between adiponectin gene polymorphism of Guangxi Zhuang ethnic group and gestational diabetes. *Zhongguo Yishi Zazhi* 2014; **9**: 1221-1223 [DOI: 10.3760/cma.j.issn.1008-1372.2014.09.018]
- 15 Chen ZY, Du J. Relationship between diponectin gene polymorphism and gestational diabetes mellitus. *Xiandai Fuchanke Jinzhan* 2011; **20**: 718-721
- 16 Wang XX, Zhang L, Zhou GF, Pu XM. Study of the correlation between adiponectin gene polymorphism and gestational diabetes mellitus. *Zhongguo Fuyoubaojian Zazhi* 2016; **31**: 2546-2549
- 17 Peng JJ, Shi FX, Wang HY, Wang ZP, Yuan P. Correlation between adiponectin and gestaional diabetes mellitus. *Zhongguo Fuyoubaojian Zazhi* 2012; **27**: 1314-1316
- 18 Zhang J, Chi H, Xiao H, Tian X, Wang Y, Yun X, Xu Y. Interleukin 6 (IL-6) and Tumor Necrosis Factor α (TNF- α) Single Nucleotide Polymorphisms (SNPs), Inflammation and Metabolism in Gestational Diabetes Mellitus in Inner Mongolia. *Med Sci Monit* 2017; **23**: 4149-4157 [PMID: 28846666 DOI: 10.12659/MSM.903565]
- 19 Chen XX, Wei BR, Zhang LF, Yang YM. Association of -3771A/G Polymorphism in Promoter Region of Adiponectin Gene with Gestational Diabetes Mellitus. *Nanchangdaxue Xuebao Yixueban* 2013; **53**: 18-21

- 20 **Yang WS**, Tsou PL, Lee WJ, Tseng DL, Chen CL, Peng CC, Lee KC, Chen MJ, Huang CJ, Tai TY, Chuang LM. Allele-specific differential expression of a common adiponectin gene polymorphism related to obesity. *J Mol Med (Berl)* 2003; **81**: 428-434 [PMID: [12750819](#) DOI: [10.1007/s00109-002-0409-4](#)]
- 21 **Xu F**, Zhang H, Qi H. No association of adiponectin +45 T/G polymorphism with the risk of gestational diabetes mellitus: Evidence from a meta-analysis. *J Renin Angiotensin Aldosterone Syst* 2016; **17**: 1470320316653283 [PMID: [27296394](#) DOI: [10.1177/1470320316653283](#)]
- 22 **Liang Z**, Dong M, Cheng Q, Chen D. Gestational diabetes mellitus screening based on the gene chip technique. *Diabetes Res Clin Pract* 2010; **89**: 167-173 [PMID: [20554072](#) DOI: [10.1016/j.diabres.2010.04.001](#)]
- 23 **Pollin TI**, Tanner K, O'connell JR, Ott SH, Damcott CM, Shuldiner AR, McLenithan JC, Mitchell BD. Linkage of plasma adiponectin levels to 3q27 explained by association with variation in the APM1 gene. *Diabetes* 2005; **54**: 268-274 [PMID: [15616038](#) DOI: [10.2337/diabetes.54.1.268](#)]
- 24 **Beebe-Dimmer JL**, Zuhlke KA, Ray AM, Lange EM, Cooney KA. Genetic variation in adiponectin (ADIPOQ) and the type 1 receptor (ADIPOR1), obesity and prostate cancer in African Americans. *Prostate Cancer Prostatic Dis* 2010; **13**: 362-368 [PMID: [20697428](#) DOI: [10.1038/pcan.2010.27](#)]
- 25 **Bouatia-Naji N**, Meyre D, Lobbens S, Séron K, Fumeron F, Balkau B, Heude B, Jouret B, Scherer PE, Dina C, Weill J, Froguel P. ACDC/adiponectin polymorphisms are associated with severe childhood and adult obesity. *Diabetes* 2006; **55**: 545-550 [PMID: [16443793](#) DOI: [10.2337/diabetes.55.02.06.db05-0971](#)]
- 26 **Urbanek M**, Hayes MG, Lee H, Freathy RM, Lowe LP, Ackerman C, Jafari N, Dyer AR, Cox NJ, Dunger DB, Hattersley AT, Metzger BE, Lowe WL. The role of inflammatory pathway genetic variation on maternal metabolic phenotypes during pregnancy. *PLoS One* 2012; **7**: e32958 [PMID: [22479352](#) DOI: [10.1371/journal.pone.0032958](#)]
- 27 **Zhang D**, Ma J, Brismar K, Efendic S, Gu HF. A single nucleotide polymorphism alters the sequence of SP1 binding site in the adiponectin promoter region and is associated with diabetic nephropathy among type 1 diabetic patients in the Genetics of Kidneys in Diabetes Study. *J Diabetes Complications* 2009; **23**: 265-272 [PMID: [18599322](#) DOI: [10.1016/j.jdiacomp.2008.05.004](#)]
- 28 **Vasseur F**, Helbecque N, Dina C, Lobbens S, Delannoy V, Gaget S, Boutin P, Vaxillaire M, Leprêtre F, Dupont S, Hara K, Clément K, Bihain B, Kadowaki T, Froguel P. Single-nucleotide polymorphism haplotypes in the both proximal promoter and exon 3 of the APM1 gene modulate adipocyte-secreted adiponectin hormone levels and contribute to the genetic risk for type 2 diabetes in French Caucasians. *Hum Mol Genet* 2002; **11**: 2607-2614 [PMID: [12354786](#) DOI: [10.1093/hmg/11.21.2607](#)]
- 29 **Petrone A**, Zavarella S, Caiazzo A, Leto G, Spoletini M, Potenziani S, Osborn J, Vania A, Buzzetti R. The promoter region of the adiponectin gene is a determinant in modulating insulin sensitivity in childhood obesity. *Obesity (Silver Spring)* 2006; **14**: 1498-1504 [PMID: [17030959](#) DOI: [10.1038/oby.2006.172](#)]
- 30 **Enns JE**, Taylor CG, Zahradka P. Variations in Adipokine Genes AdipoQ, Lep, and LepR are Associated with Risk for Obesity-Related Metabolic Disease: The Modulatory Role of Gene-Nutrient Interactions. *J Obes* 2011; **2011**: 168659 [PMID: [21773001](#) DOI: [10.1155/2011/168659](#)]

P- Reviewer: Pastromas S, Cengiz M

S- Editor: Dou Y **L- Editor:** Wang TQ **E- Editor:** Tan WW





Published By Baishideng Publishing Group Inc
7041 Koll Center Parkway, Suite 160, Pleasanton, CA 94566, USA
Telephone: +1-925-2238242
Fax: +1-925-2238243
E-mail: bpgoffice@wjgnet.com
Help Desk: <https://www.f6publishing.com/helpdesk>
<https://www.wjgnet.com>

