

World Journal of *Gastrointestinal Surgery*

World J Gastrointest Surg 2019 April 27; 11(4): 198-246



**REVIEW**

- 198** Pancreatic necrosis: Complications and changing trend of treatment
Rashid MU, Hussain I, Jehanzeb S, Ullah W, Ali S, Jain AG, Khetpal N, Ahmad S

ORIGINAL ARTICLE**Retrospective Cohort Study**

- 218** Preoperative bowel preparation does not favor the management of colorectal anastomotic leak
Zorbas KA, Yu D, Choudhry A, Ross HM, Philp M

CASE REPORT

- 229** Malignant transformation of hepatocellular adenoma in a young female patient after ovulation induction fertility treatment: A case report
Glinka J, Clariá RS, Fratanoni E, Spina J, Mullen E, Ardiles V, Mazza O, Pekolj J, de Santibañes M, de Santibañes E
- 237** Management of infected pancreatic necrosis in the setting of concomitant rectal cancer: A case report and review of literature
Choi K, Flynn DE, Karunairajah A, Hughes A, Bhasin A, Devereaux B, Chandrasegaram MD

ABOUT COVER

Associate Editor of *World Journal of Gastrointestinal Surgery*, Ying-Bin Liu, MD, Professor, Department of General Surgery, Xinhua Hospital Affiliated to Shanghai Jiao Tong University School of Medicine, Shanghai; Institute of Biliary Tract Disease, Shanghai Jiao Tong University School of Medicine, Shanghai 200092, China

AIMS AND SCOPE

World Journal of Gastrointestinal Surgery (*World J Gastrointest Surg*, *WJGS*, online ISSN 1948-9366, DOI: 10.4240) is a peer-reviewed open access academic journal that aims to guide clinical practice and improve diagnostic and therapeutic skills of clinicians.

The *WJGS* covers topics concerning micro-invasive surgery; laparoscopy; hepatic, biliary, pancreatic and splenic surgery; surgical nutrition; portal hypertension, as well as associated subjects. The current columns of *WJGS* include editorial, frontier, diagnostic advances, therapeutics advances, field of vision, mini-reviews, review, original articles, case report, etc.

We encourage authors to submit their manuscripts to *WJGS*. We will give priority to manuscripts that are supported by major national and international foundations and those that are of great basic and clinical significance.

INDEXING/ABSTRACTING

The *WJGS* is now abstracted and indexed in PubMed, PubMed Central, Emerging Sources Citation Index (Web of Science), China National Knowledge Infrastructure (CNKI), China Science and Technology Journal Database (CSTJ), and Superstar Journals Database.

RESPONSIBLE EDITORS FOR THIS ISSUE

Responsible Electronic Editor: Yun-Xiaojuan Wu Proofing Editorial Office Director: Jin-Lei Wang

NAME OF JOURNAL

World Journal of Gastrointestinal Surgery

ISSN

ISSN 1948-9366 (online)

LAUNCH DATE

November 30, 2009

FREQUENCY

Monthly

EDITORS-IN-CHIEF

Varut Lohsiriwat, Shu-You Peng

EDITORIAL BOARD MEMBERS

<https://www.wjgnet.com/1948-9366/editorialboard.htm>

EDITORIAL OFFICE

Jin-Lei Wang, Director

PUBLICATION DATE

April 27, 2019

COPYRIGHT

© 2019 Baishideng Publishing Group Inc

INSTRUCTIONS TO AUTHORS

<https://www.wjgnet.com/bpg/gerinfo/204>

GUIDELINES FOR ETHICS DOCUMENTS

<https://www.wjgnet.com/bpg/GerInfo/287>

GUIDELINES FOR NON-NATIVE SPEAKERS OF ENGLISH

<https://www.wjgnet.com/bpg/gerinfo/240>

PUBLICATION MISCONDUCT

<https://www.wjgnet.com/bpg/gerinfo/208>

ARTICLE PROCESSING CHARGE

<https://www.wjgnet.com/bpg/gerinfo/242>

STEPS FOR SUBMITTING MANUSCRIPTS

<https://www.wjgnet.com/bpg/GerInfo/239>

ONLINE SUBMISSION

<https://www.f6publishing.com>



Malignant transformation of hepatocellular adenoma in a young female patient after ovulation induction fertility treatment: A case report

Juan Glinka, Rodrigo Sanchez Clariá, Eugenia Fratanoni, Juan Spina, Eduardo Mullen, Victoria Ardiles, Oscar Mazza, Juan Pekolj, Martín de Santibañes, Eduardo de Santibañes

ORCID number: Juan Glinka (0000-0003-4373-965X); Rodrigo Sanchez Clariá (0000-0003-3614-0817); Eugenia Fratanoni (0000-0003-2815-2973); Juan Spina (0000-0002-5368-0797); Eduardo Mullen (0000-0002-0973-1147); Victoria Ardiles (0000-0002-4654-3970); Oscar Mazza (0000-0001-6638-8659); Juan Pekolj (0000-0003-2608-5914); Martín de Santibañes (0000-0002-0163-1248); Eduardo de Santibañes (0000-0002-5788-9694).

Author contributions: Glinka J and Fratanoni E designed the report; Fratanoni E collected the patient's clinical data; Spina J and Mullen E provided relevant figures; Glinka J, Clariá RS, Ardiles V, Pekolj J, Mazza O, de Santibañes M and de Santibañes E analysed the data and wrote the paper.

Informed consent statement: Consent was obtained from the patient for publication.

Conflict-of-interest statement: The authors declare that no conflict of interest exists.

CARE Checklist (2016) statement: The authors have read the CARE Checklist (2016), and the manuscript was prepared and revised according to the CARE Checklist (2016).

Open-Access: This article is an open-access article which was selected by an in-house editor and

Juan Glinka, Rodrigo Sanchez Clariá, Eugenia Fratanoni, Victoria Ardiles, Oscar Mazza, Juan Pekolj, Martín de Santibañes, Eduardo de Santibañes, Department of General Surgery, Hepato-bilio-pancreatic Unit, Hospital Italiano de Buenos Aires, Buenos Aires C1181ACH, Argentina

Juan Spina, Department of Radiology, Hospital Italiano de Buenos Aires, Buenos Aires C1181ACH, Argentina

Eduardo Mullen, Department of Surgical Pathology, Hospital Italiano de Buenos Aires, Buenos Aires C1181ACH, Argentina

Corresponding author: Juan Glinka, MD, Attending Doctor, Surgeon, HPB and Liver Transplantation Surgeon, Department of General Surgery, Hepato-bilio-pancreatic Unit, Hospital Italiano de Buenos Aires, Juan D. Perón 4190, Buenos Aires C1181ACH, Argentina. juan.glinka@hospitalitaliano.org.ar
Telephone: +54-11-49814501

Abstract

BACKGROUND

Hepatocellular adenoma (HCA) is a rare benign liver tumor usually affecting young women with a history of prolonged use of hormonal contraception. Although the majority is asymptomatic, a low proportion may have significant complications such as bleeding or malignancy. Despite responding to the hormonal stimulus, the desire for pregnancy in patients with small HCA is not contraindicated. However, through this work we demonstrate that intensive hormonal therapies such as those used in the treatment of infertility can trigger serious complications

CASE SUMMARY

A 33-year-old female with a 10-year history of oral contraceptive use was diagnosed with a hepatic tumor as an incidental finding in an abdominal ultrasound. The patient showed no symptoms and physical examination was unremarkable. Laboratory functional tests were within normal limits and tests for serum tumor markers were negative. An abdominal magnetic resonance imaging (MRI) was performed, showing a 30 mm × 29 mm focal lesion in segment VI of the liver compatible with HCA or Focal Nodular Hyperplasia with atypical behavior. After a total of six years of follow-up, the patient underwent ovulation

fully peer-reviewed by external reviewers. It is distributed in accordance with the Creative Commons Attribution Non Commercial (CC BY-NC 4.0) license, which permits others to distribute, remix, adapt, build upon this work non-commercially, and license their derivative works on different terms, provided the original work is properly cited and the use is non-commercial. See:

<http://creativecommons.org/licenses/by-nc/4.0/>

Manuscript source: Unsolicited manuscript

Received: February 25, 2019

Peer-review started: February 25, 2019

First decision: March 11, 2019

Revised: March 26, 2019

Accepted: April 23, 2019

Article in press: April 23, 2019

Published online: April 27, 2019

P-Reviewer: Huang XY, Young CJJ

S-Editor: Ji FF

L-Editor: A

E-Editor: Wu YXJ



induction treatment for infertility. On a following MRI, a suspected malignancy was warned and hence, surgery was decided. The surgical specimen revealed malignant transformation of HCA towards trabecular hepatocarcinoma with dedifferentiated areas. There was non-evidence of tumor recurrence after three years of clinical and imaging follow-up.

CONCLUSION

HCAs can be malignant regardless its size and low-risk appearance on MRI when an ovulation induction therapy is indicated.

Key words: Hepatocellular adenoma; Malignant transformation; Focal liver lesion; Adenoma; Ovulation induction; Case report

©The Author(s) 2019. Published by Baishideng Publishing Group Inc. All rights reserved.

Core tip: As far as we know, this is the first report of a case involving a young woman with a small hepatocellular adenoma (HCA) with a stable behavior in a 6-year follow-up, who developed imaging changes suggesting malignancy after performing ovulation induction treatment. The patient underwent surgery due to diagnostic uncertainty, and the pathology report confirmed its malignancy. Therefore, we conclude that HCAs can be malignant regardless its size and low-risk appearance on magnetic resonance imaging when a hormone therapy is indicated.

Citation: Glinka J, Clariá RS, Fratanoni E, Spina J, Mullen E, Ardiles V, Mazza O, Pekolj J, de Santibañes M, de Santibañes E. Malignant transformation of hepatocellular adenoma in a young female patient after ovulation induction fertility treatment: A case report. *World J Gastrointestinal Surgery* 2019; 11(4): 229-236

URL: <https://www.wjnet.com/1948-9366/full/v11/i4/229.htm>

DOI: <https://dx.doi.org/10.4240/wjgs.v11.i4.229>

INTRODUCTION

Hepatocellular adenoma (HCA) is a rare benign liver tumor that usually affects young women with a history of prolonged use of hormonal contraception^[1,2]. Most patients are asymptomatic and diagnosis is made by incidental findings in ultrasonographic studies performed for another reason. A low proportion may have significant complications such as bleeding or malignancy^[3]. Therefore, the cessation of hormonal contraception in patients with HCA considered small (less than 5 cm) is usually enough to keep them stable or to cause spontaneous regression^[4].

The desire for pregnancy in patients with small HCA is not contraindicated^[5]. However, through this work we demonstrate that intensive hormonal therapies such as those used in the treatment of infertility can trigger serious complications. As far as we know, this is the first report of a case involving a young woman with a small HCA with a stable behavior in a 6-year follow-up, that after performing ovulation induction fertility treatment (OIFT) to achieve pregnancy, developed imaging changes that suggested growth and atypical behavior. The patient was offered surgery due to diagnostic uncertainty, and the pathology report confirmed the malignant behavior of the lesion.

CASE PRESENTATION

Chief complaints

The patient was asymptomatic.

History of past illness

The patient had no previous disease.

History of present illness

A 33-year-old female with a 10-year history of oral contraceptive use was diagnosed with an hepatic tumor as an incidental finding in an abdominal ultrasound (US). An

abdominal magnetic resonance imaging (MRI) was performed, showing a 30 mm × 29 mm focal lesion in segment VI of the liver, slightly hyperintense in T2 and isointense in T1 weighted sequences, with a central scar that showed enhancement in early arterial phase and retained contrast on delayed scans, compatible with HCA or Focal Nodular Hyperplasia (FNH) with atypical behavior (Figure 1).

After two years of follow-up, the patient presented an episode of upper quadrant abdominal pain, fever and vomiting. Laboratory test were normal and a new MRI showed a slight reduction in the size of the nodular formation, measuring 26 mm × 18 mm, with a change in its characteristics. Currently showing a hypointense center in T2 and hyperintense appearance in T1, compatible with an intralesional hematic component. The presumptive diagnosis in this circumstance was a HCA with hemorrhagic changes inside (Figure 2).

Because the patient refused to undergo surgery a conservative management was decided, agreeing a strict follow-up with serum tumor markers and color Doppler US alternating with MRI every six months. Since then, no changes in tumor characteristics were observed for the following four years.

The patient later underwent hormonal treatment for infertility. The scheme used consisted in six doses of Clomiphene (50 milligrams/d) the first 6 d, recombinant FSH (follicle-stimulating hormone) 150 IU and LH (luteinizing hormone) 75 IU per day for 10 d. Cetrorelix (0.25 IU) per day during 4 d (from day 6 to 10 from the initiation of the stimulus). Subsequently, HCG (10.000 IU) a single dose in day 11.

Physical examination

Physical examination was unremarkable.

Laboratory testing

Laboratory functional tests were within normal limits and tests for serum tumor markers carcinoembryonic antigen, carbohydrate antigen 19-9 and alpha-fetoprotein were negative.

Imaging examination

In the last MRI (six months after ovulation induction therapy) the tumor increased in size (40 mm × 39 mm) and a new focal image of 31 mm × 26 mm in contact with its upper region was detected. Both lesions presented heterogeneous enhancement, slighter than the rest of the hepatic parenchyma that persisted in late phases. It showed restriction signs in diffusion-weighted image (DWI), probably because of higher cellularity (Figure 3).

FINAL DIAGNOSIS

Malignant transformation of HCA.

TREATMENT

Surgical treatment was decided. Through a laparotomy approach, the right liver was mobilized. Intraoperative US was performed, revealing two contiguous lesions in segments VI and VII of the liver in contact with the inferior vena cava (IVC). Segmentectomy of the mentioned segments was successfully carried out, with detachment from the IVC and en-block resection with the capsular vein and right adrenal gland that was in intimate contact with the tumor.

OUTCOME AND FOLLOW-UP

The surgery was carried out successfully. There were neither intraoperative nor postoperative complications, the clinical evolution was favorable and the patient was discharged at day five. The anatomopathological exam revealed a polylobulated tumor of 60 mm × 50 mm × 50 mm constituted by cells with abundant eosinophilic cytoplasm, marked anisokaryosis, multinucleation, macronucleoli and frequent atypical mitosis. Extensive areas of intratumoral necrosis were also evident. Growth pattern was expansive and infiltrative and a tumor capsule with infiltration zones was evident. Vascular and lymphatic tumor embolisms coexisted within the lesion (Figure 4).

The hepatic parenchyma adjacent to the tumoral formation showed conserved lobular histo-architecture, and absence of steatosis and portal or peri-portal fibro-

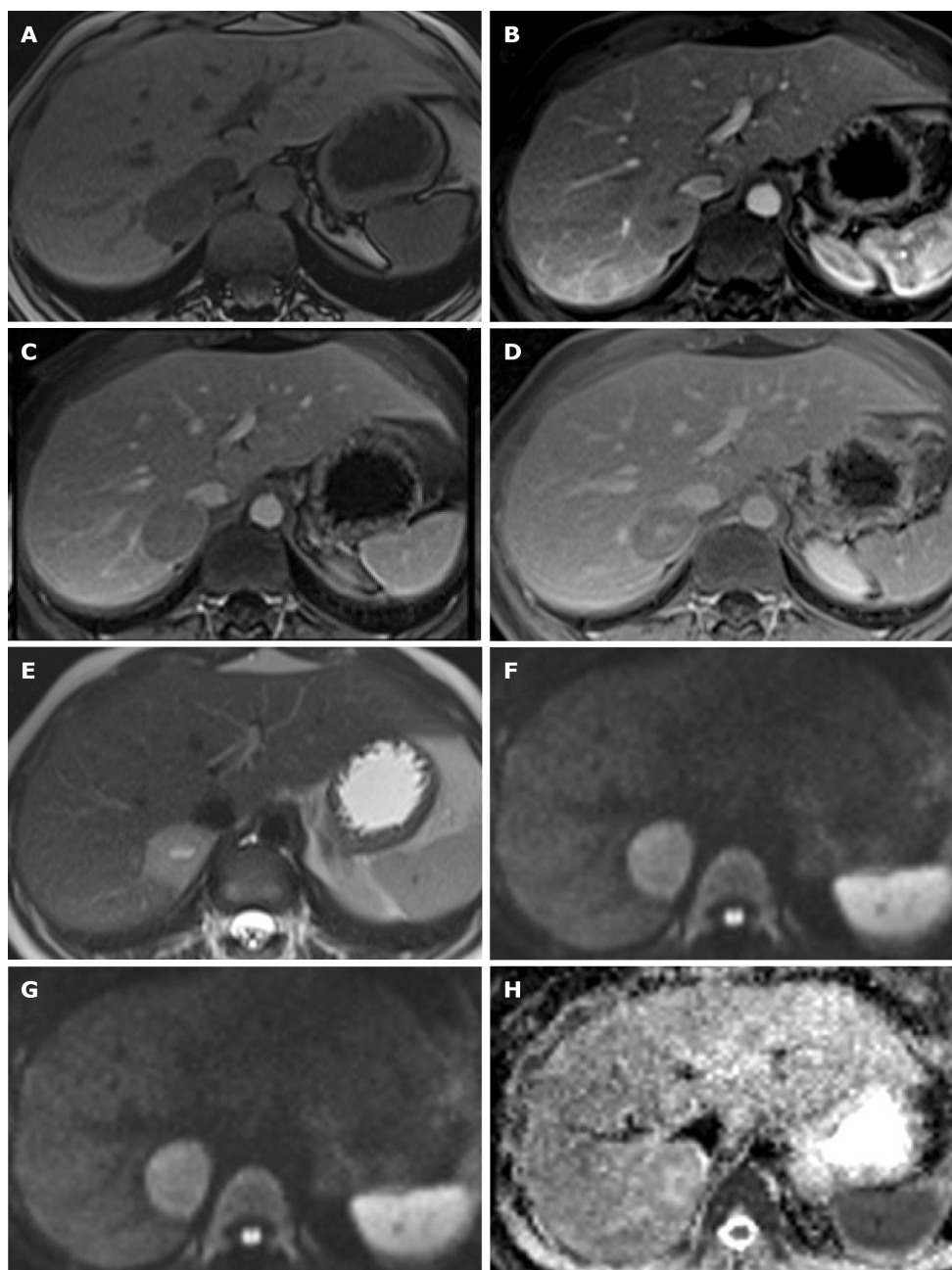


Figure 1 Magnetic resonance imaging is showing a focal image with well-defined limits in segment VII of the liver, in contact with the inferior vena cava. A: It is slightly hypertensive in T2 with a central zone of a higher signal; B: Is hyperintense in diffusion-weighted image b800; C: Is iso-hyperintense in ADC; D: It is iso-hypointense in phase sequence; E: Has a signal drop in the out-of-phase sequence; F: After administration of the EV contrast, it does not enhance in the arterial phase; G: Is hypointense in the portal phase; H: Shows an apparent central scar in the late phase. These findings are compatible with hepatocellular adenoma or Focal Nodular Hyperplasia of atypical behavior.

inflammatory processes. Masson's Trichomic and Reticulin techniques demonstrated the absence of portal fibrosis and intralobular fibrosis in the hepatic parenchyma adjacent to the tumoral formation (Figure 5).

Regarding immunohistochemistry techniques, Beta-Catenine, Glypican-3, Cytokeratin 7 were negative; HSP-70, CD-68, and Glutamine-Synthetase were focally positive; CD34 revealed abundant vascular frames and non-triad vessels, and Ki-67 expression revealed areas with high proliferation. The margins of surgical resection and Glisson's capsule were free of tumor infiltration.

All the described characteristics suggested the malignant transformation of HCA towards trabecular hepatocarcinoma (HCC) with dedifferentiated areas. In three-year of clinical and imaging follow-up, the patient did not evidence tumor recurrence.

DISCUSSION

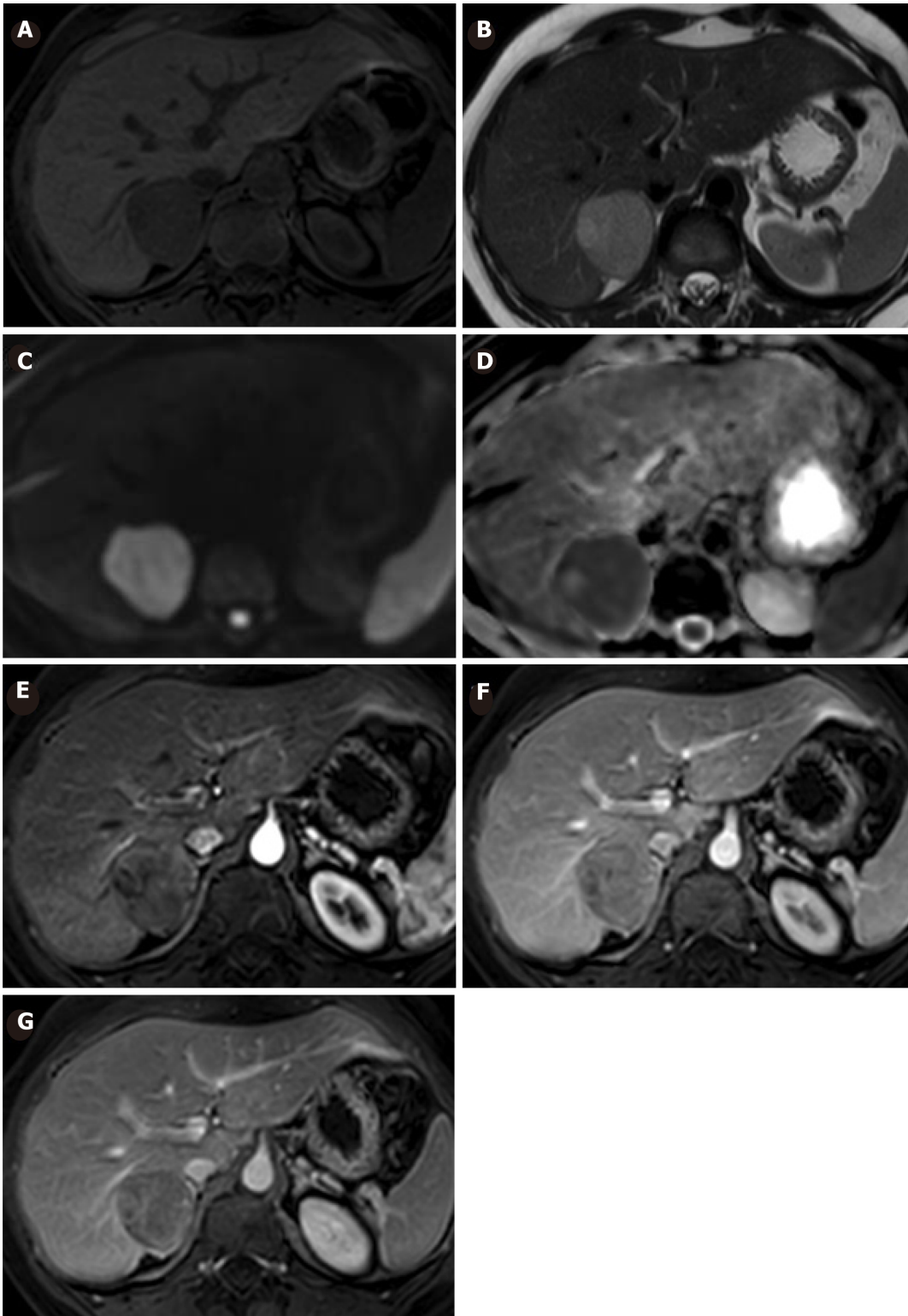


Figure 2 Magnetic resonance imaging is showing a decreased size of the lesion in follow-up. A: Is hypointense in T2 with an edge of greater signal; B: Is isohyperintense in T1; C: It does not show definite evidence of enhancement after administration of the EV contrast in C: Arterial; D: Portal; E: Late phase. These findings could be related to a hepatocellular adenoma with intralesional hemorrhagic changes.

HCAs are rare monoclonal benign tumors of the liver with an estimated incidence of 3-4/100000 per year in Europe and North America^[2,4]. Most HCAs are solitary and usually incidental findings in patients undergoing radiological work up for unrelated or non-specific symptoms^[6]. They closely relate to the dose and duration of OCP use, as well as they tend to regress with the withdrawal of hormonal therapy, so its response to hormonal stimulation is unquestionless according to several studies^[1,7,8]. Once they are diagnosed, discontinuing OCP is indicated in order to prevent potential major complications that can occur, like bleeding and/or malignant transformation.

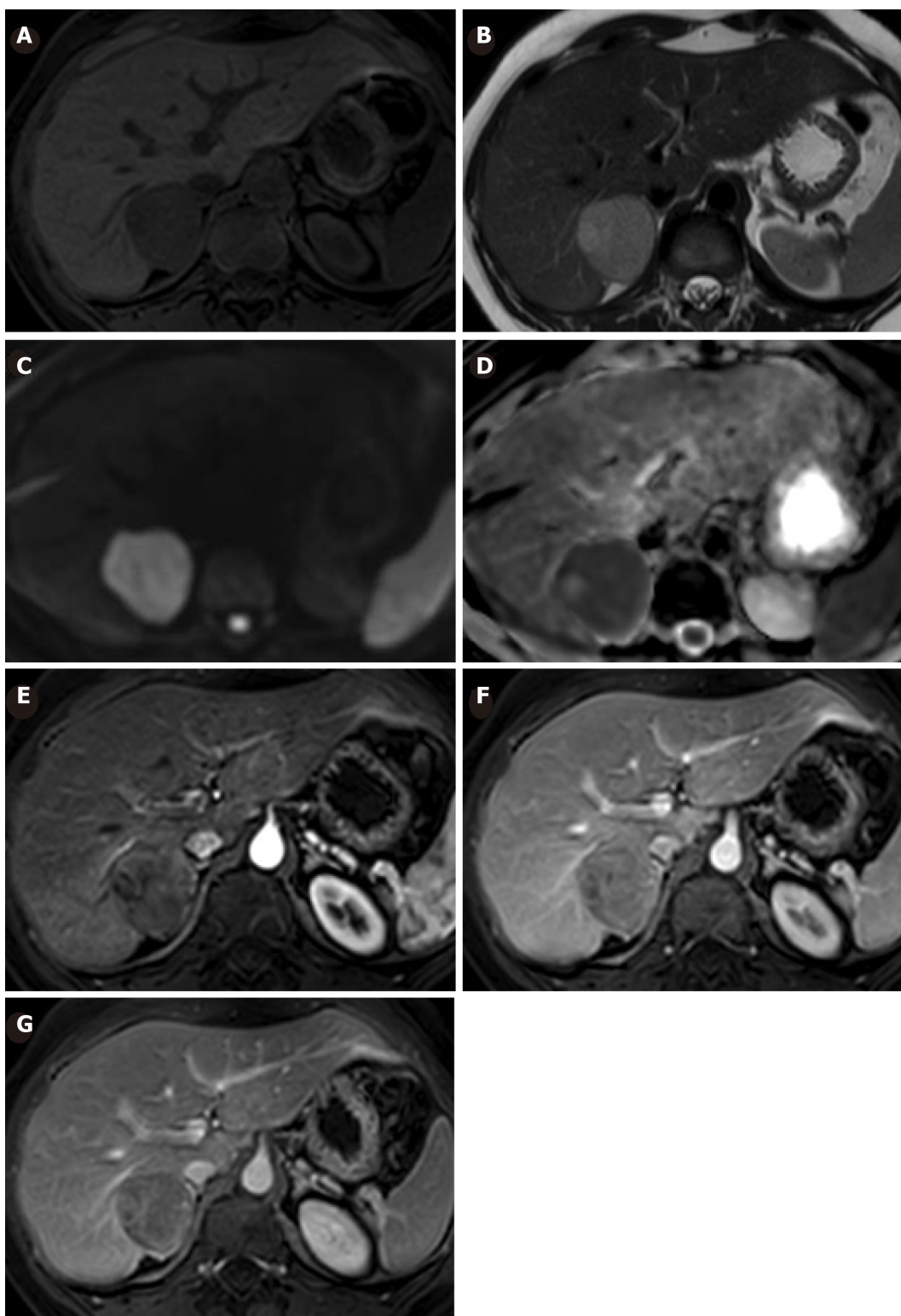


Figure 3 Magnetic resonance imaging showing enlargement of the lesion in follow-up. A: It is hypointense in T1; B: Hyperintense in T2; C: Hyperintense in diffusion-weighted image (DWI) b800. D: It shows restriction in ADC; E: Has slight heterogeneous enhancement in arterial phase; F: Has more evident enhancement in portal phase; G: Also more enhancement in late phase. The increase in size and the presence of restriction in DWI is suggestive of malignant transformation.

Although its real incidence is not known, Deneve *et al*^[9] reported in a multicenter analysis a 4% malignancy rate in HCA from resected specimens. With the remarkable find that the smallest lesion harboring malignancy was 8 cm. Most of the series that report malignant transformation are focused on HCA treated by resection, which could lead to an overestimation of the risk of malignant transformation^[10]. van Aalten *et al*^[11] reported in a systematic review a hemorrhage overall frequency of 27.2%, with an acute rupture and intraperitoneal bleeding in 17.5% of patients. Hemorrhage generally arose in the larger lesions (> 5 cm) but only resected cases were included in

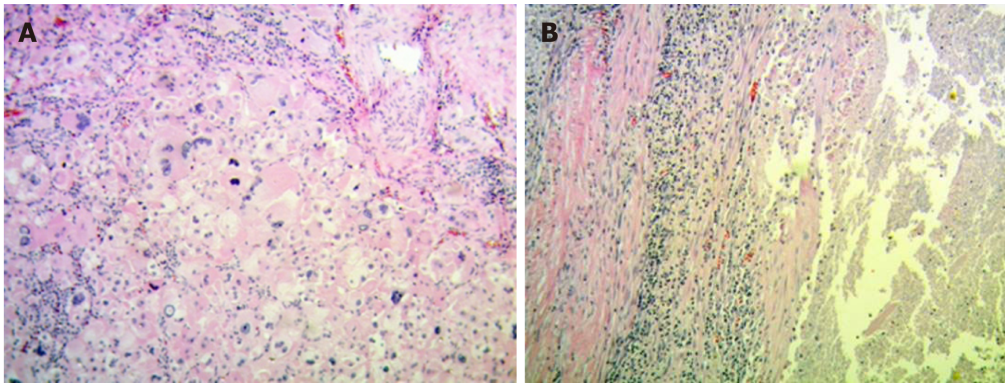


Figure 4 Hematoxylin and eosin. A: With 400×, tumor area with atypia and abundant mitotic figures can be noticed; B: With 100×, sector with extensive necrosis and the presence of a tumor capsule can be seen.

this work, so its true incidence is hard to know also.

Currently, a better knowledge about risk factors to develop complications - such as male sex, size greater than 5 cm and β -catenin-activated molecular subtype - has reflected improvements in the selection of patients that would benefit more from a radical treatment *vs* a conservative treatment^[12,13]. In practice, both MRI and biopsy with IHQ are usefull in decision making to help classify HCAs in high or low risk of complications. However, performing a biopsy systematically is still controversial^[6]. In the Ronot *et al*^[14] study comparing the efficacy of MRI findings in the diagnosis of these lesions against a routine histological analysis, a 74.5% of agreement between both techniques was observed, with a likelihood ratio of subtype characterization by MRI higher than 20. Therefore, in our center we only perform biopsies when imaging studies are inconclusive. As for this case, we believe a biopsy should have been performed because surgical resection was not considered at the outset. Anyway, in the resected specimen we did not observe β -catenin-activated labeling or any other risk sign, so a categorical HCA biopsy would not have modified our decision of a conservative treatment.

In the past, the relation between an HCA growth ratio and hormonal stimulation in fertile females with these lesions caused them to be discouraged from pregnancy. Today, women with a low-risk HCA who accept the risk of complications related to potential growth during pregnancy could carry it forward without problems^[15]. The indispensable condition is that to have a strict surveillance with abdominal US and serum markers. Noels *et al*^[5] monitored twelve women with documented HCA during a total of 17 pregnancies. In 4 cases HCA's grew during pregnancy, requiring a Caesarean section in 1 patient and radiofrequency ablation in 1 case. All pregnancies reported uneventful course with a successful maternal and fetal outcome. They conclude that if interventions on an HCA are required during pregnancy, they can be performed safely^[5].

The patient of this case was a young woman without any children with a strong desire for pregnancy. Considering the patient's wish and anxiety, the stable characteristics of her HCA, and the lack of evidence about OIFT effect on these lesions, in a multidisciplinary meeting the indication for OIFT has been covenanted.

The patient accepted the risks and the need for strict control. Fortunately and thanks to the rigorous surveillance, malignant transformation of the HCA was early detected and treated with surgery without evidence of recurrence in 3 years of follow-up.

CONCLUSION

In conclusion, HCAs can be malignant regardless its size and low-risk appearance on MRI when an OIFT is indicated. Therefore, all HCAs should be resected prior to any hormonal therapy given their unpredictable behavior against such stimulation.

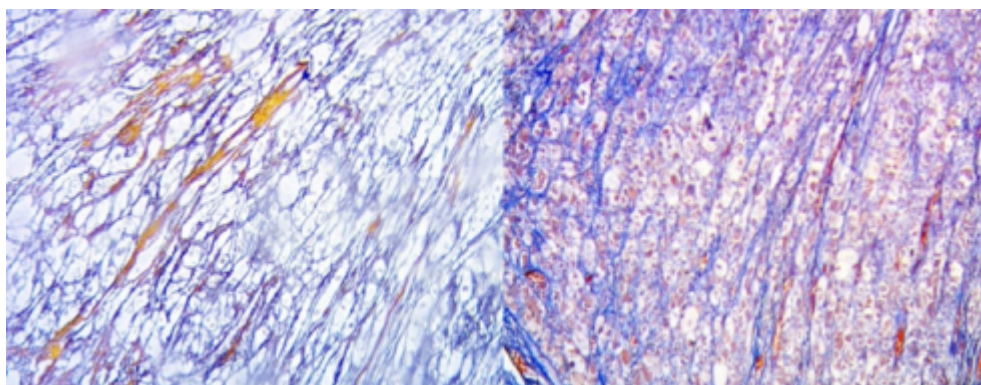


Figure 5 Masson trichrome and Reticulin staining in 400×. Trabecular organization of the tumor and para-trabecular fibrosis can be observed.

ACKNOWLEDGEMENTS

We thank Tessa Huber and Patricio Rosas for their disinterested contributions.

REFERENCES

- 1 **Edmondson HA**, Henderson B, Benton B. Liver-cell adenomas associated with use of oral contraceptives. *N Engl J Med* 1976; **294**: 470-472 [PMID: 173996 DOI: 10.1056/NEJM197602262940904]
- 2 **Vijay A**, Elaffandi A, Khalaf H. Hepatocellular adenoma: An update. *World J Hepatol* 2015; **7**: 2603-2609 [PMID: 26557953 DOI: 10.4254/wjh.v7.i25.2603]
- 3 **Sempoux C**, Balabaud C, Bioulac-Sage P. Malignant transformation of hepatocellular adenoma. *Hepat Oncol* 2014; **1**: 421-431 [PMID: 30190977 DOI: 10.2217/hep.14.14]
- 4 **Thomeer MG**, Broker M, Verheij J, Doukas M, Terkivatan T, Bijdevaate D, De Man RA, Moelker A, IJzermans JN. Hepatocellular adenoma: when and how to treat? Update of current evidence. *Therap Adv Gastroenterol* 2016; **9**: 898-912 [PMID: 27803743 DOI: 10.1177/1756283X16663882]
- 5 **Noels JE**, van Aalten SM, van der Windt DJ, Kok NF, de Man RA, Terkivatan T, IJzermans JN. Management of hepatocellular adenoma during pregnancy. *J Hepatol* 2011; **54**: 553-558 [PMID: 21094555 DOI: 10.1016/j.jhep.2010.07.022]
- 6 **Tsilimigras DI**, Rahnama-Azar AA, Ntanasis-Stathopoulos I, Gavriatopoulou M, Moris D, Spartalis E, Cloyd JM, Weber SM, Pawlik TM. Current Approaches in the Management of Hepatic Adenomas. *J Gastrointest Surg* 2019; **23**: 199-209 [DOI: 10.1007/s11605-018-3917-4]
- 7 **Barthelmes L**, Tait IS. Liver cell adenoma and liver cell adenomatosis. *HPB (Oxford)* 2005; **7**: 186-196 [PMID: 18333188 DOI: 10.1080/13651820510028954]
- 8 **Liau SS**, Qureshi MS, Praseedom R, Huguet E. Molecular pathogenesis of hepatic adenomas and its implications for surgical management. *J Gastrointest Surg* 2013; **17**: 1869-1882 [PMID: 23835731 DOI: 10.1007/s11605-013-2274-6]
- 9 **Deneve JL**, Pawlik TM, Cunningham S, Clary B, Reddy S, Scoggins CR, Martin RC, D'Angelica M, Staley CA, Choti MA, Jarnagin WR, Schulick RD, Kooby DA. Liver cell adenoma: a multicenter analysis of risk factors for rupture and malignancy. *Ann Surg Oncol* 2009; **16**: 640-648 [PMID: 19130136 DOI: 10.1245/s10434-008-0275-6]
- 10 **Stoot JH**, Coelen RJ, De Jong MC, Dejong CH. Malignant transformation of hepatocellular adenomas into hepatocellular carcinomas: a systematic review including more than 1600 adenoma cases. *HPB (Oxford)* 2010; **12**: 509-522 [PMID: 20887318 DOI: 10.1111/j.1477-2574.2010.00222.x]
- 11 **van Aalten SM**, de Man RA, IJzermans JN, Terkivatan T. Systematic review of haemorrhage and rupture of hepatocellular adenomas. *Br J Surg* 2012; **99**: 911-916 [PMID: 22619025 DOI: 10.1002/bjs.8762]
- 12 **Agrawal S**, Agarwal S, Arason T, Saini S, Belghiti J. Management of Hepatocellular Adenoma: Recent Advances. *Clin Gastroenterol Hepatol* 2015; **13**: 1221-1230 [PMID: 24909909 DOI: 10.1016/j.cgh.2014.05.023]
- 13 **Blanc JF**, Frulio N, Chiche L, Bioulac-Sage P, Balabaud C. Hepatocellular adenoma management: advances but still a long way to go. *Hepat Oncol* 2015; **2**: 171-180 [PMID: 30190996 DOI: 10.2217/hep.14.41]
- 14 **Ronot M**, Bahrami S, Calderaro J, Valla DC, Bedossa P, Belghiti J, Vilgrain V, Paradis V. Hepatocellular adenomas: accuracy of magnetic resonance imaging and liver biopsy in subtype classification. *Hepatology* 2011; **53**: 1182-1191 [PMID: 21480324 DOI: 10.1002/hep.24147]
- 15 **Bröker ME**, IJzermans JN, van Aalten SM, de Man RA, Terkivatan T. The management of pregnancy in women with hepatocellular adenoma: a plea for an individualized approach. *Int J Hepatol* 2012; **2012**: 725735 [PMID: 23320183 DOI: 10.1155/2012/725735]



Published By Baishideng Publishing Group Inc
7041 Koll Center Parkway, Suite 160, Pleasanton, CA 94566, USA
Telephone: +1-925-2238242
Fax: +1-925-2238243
E-mail: bpgoffice@wjgnet.com
Help Desk: <https://www.f6publishing.com/helpdesk>
<https://www.wjgnet.com>

