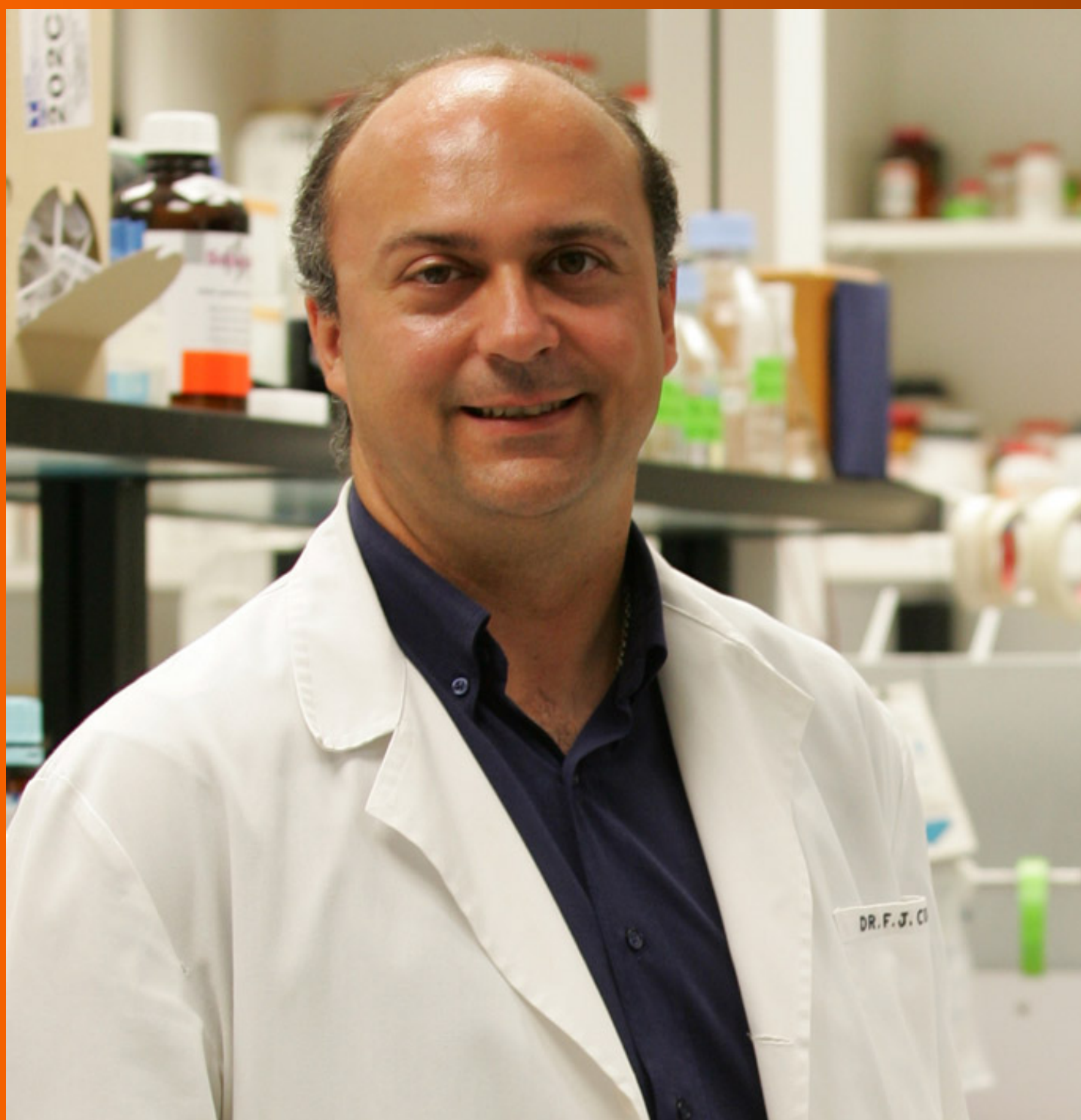


World Journal of *Gastroenterology*

World J Gastroenterol 2019 July 14; 25(26): 3283-3467



**OPINION REVIEW**

- 3283** Diuretic window hypothesis in cirrhosis: Changing the point of view
Brito-Azevedo A
- 3291** Fluoroquinolones for the treatment of latent *Mycobacterium tuberculosis* infection in liver transplantation
Silva JT, San-Juan R, Fernández-Ruiz M, Aguado JM

REVIEW

- 3299** Reactivation of hepatitis B virus infection in patients with hemo-lymphoproliferative diseases, and its prevention
Sagnelli C, Pisaturo M, Calò F, Martini S, Sagnelli E, Coppola N
- 3313** Current status of endoscopic retrograde cholangiopancreatography in patients with surgically altered anatomy
Krutsri C, Kida M, Yamauchi H, Iwai T, Imaizumi H, Koizumi W

MINIREVIEWS

- 3334** Choledochal cysts: Similarities and differences between Asian and Western countries
Baison GN, Bonds MM, Helton WS, Kozarek RA
- 3344** Gastro-duodenal disease in Africa: Literature review and clinical data from Accra, Ghana
Archampong TN, Asmah RH, Richards CJ, Martin VJ, Bayliss CD, Botão E, David L, Beleza S, Carrilho C
- 3359** Screening of aptamers and their potential application in targeted diagnosis and therapy of liver cancer
Zhang GQ, Zhong LP, Yang N, Zhao YX

ORIGINAL ARTICLE**Basic Study**

- 3370** Drug-eluting fully covered self-expanding metal stent for dissolution of bile duct stones *in vitro*
Huang C, Cai XB, Guo LL, Qi XS, Gao Q, Wan XJ
- 3380** Raddeanin A promotes apoptosis and ameliorates 5-fluorouracil resistance in cholangiocarcinoma cells
Guo SS, Wang Y, Fan QX
- 3392** Identification of differentially expressed genes regulated by methylation in colon cancer based on bioinformatics analysis
Liang Y, Zhang C, Dai DQ

Retrospective Study

- 3408** Histologic features and genomic alterations of primary colorectal adenocarcinoma predict growth patterns of liver metastasis
Wu JB, Sarmiento AL, Fiset PO, Lazaris A, Metrakos P, Petrillo S, Gao ZH

Observational Study

- 3426** International normalized ratio and Model for End-stage Liver Disease score predict short-term outcome in cirrhotic patients after the resolution of hepatic encephalopathy
Hu XP, Gao J

SYSTEMATIC REVIEWS

- 3438** Synchronous resection of esophageal cancer and other organ malignancies: A systematic review
Papaconstantinou D, Tsilimigras DI, Moris D, Michalinos A, Mastoraki A, Mpali E, Hasemaki N, Bakopoulos A, Filippou D, Schizas D

META-ANALYSIS

- 3450** Genetic testing vs microforceps biopsy in pancreatic cysts: Systematic review and meta-analysis
Faias S, Pereira L, Luís Á, Chaves P, Cravo M

ABOUT COVER

Editorial board member of *World Journal of Gastroenterology*, Andrew Stewart Day, MD, Professor, Paediatrics Department, University of Otago, Christchurch 8041, New Zealand

AIMS AND SCOPE

World Journal of Gastroenterology (*World J Gastroenterol*, *WJG*, print ISSN 1007-9327, online ISSN 2219-2840, DOI: 10.3748) is a peer-reviewed open access journal. The *WJG* Editorial Board consists of 701 experts in gastroenterology and hepatology from 58 countries.

The primary task of *WJG* is to rapidly publish high-quality original articles, reviews, and commentaries in the fields of gastroenterology, hepatology, gastrointestinal endoscopy, gastrointestinal surgery, hepatobiliary surgery, gastrointestinal oncology, gastrointestinal radiation oncology, etc. The *WJG* is dedicated to become an influential and prestigious journal in gastroenterology and hepatology, to promote the development of above disciplines, and to improve the diagnostic and therapeutic skill and expertise of clinicians.

INDEXING/ABSTRACTING

The *WJG* is now indexed in Current Contents®/Clinical Medicine, Science Citation Index Expanded (also known as SciSearch®), Journal Citation Reports®, Index Medicus, MEDLINE, PubMed, PubMed Central, and Scopus. The 2019 edition of Journal Citation Report® cites the 2018 impact factor for *WJG* as 3.411 (5-year impact factor: 3.579), ranking *WJG* as 35th among 84 journals in gastroenterology and hepatology (quartile in category Q2). CiteScore (2018): 3.43.

RESPONSIBLE EDITORS FOR THIS ISSUE

Responsible Electronic Editor: Yan-Liang Zhang

Proofing Production Department Director: Yun-Xiaojian Wu

NAME OF JOURNAL

World Journal of Gastroenterology

ISSN

ISSN 1007-9327 (print) ISSN 2219-2840 (online)

LAUNCH DATE

October 1, 1995

FREQUENCY

Weekly

EDITORS-IN-CHIEF

Subrata Ghosh, Andrzej S. Tarnawski

EDITORIAL BOARD MEMBERS

<http://www.wjgnet.com/1007-9327/editorialboard.htm>

EDITORIAL OFFICE

Ze-Mao Gong, Director

PUBLICATION DATE

July 14, 2019

COPYRIGHT

© 2019 Baishideng Publishing Group Inc

INSTRUCTIONS TO AUTHORS

<https://www.wjgnet.com/bpg/gerinfo/204>

GUIDELINES FOR ETHICS DOCUMENTS

<https://www.wjgnet.com/bpg/GerInfo/287>

GUIDELINES FOR NON-NATIVE SPEAKERS OF ENGLISH

<https://www.wjgnet.com/bpg/gerinfo/240>

PUBLICATION MISCONDUCT

<https://www.wjgnet.com/bpg/gerinfo/208>

ARTICLE PROCESSING CHARGE

<https://www.wjgnet.com/bpg/gerinfo/242>

STEPS FOR SUBMITTING MANUSCRIPTS

<https://www.wjgnet.com/bpg/GerInfo/239>

ONLINE SUBMISSION

<https://www.f6publishing.com>



Gastro-duodenal disease in Africa: Literature review and clinical data from Accra, Ghana

Timothy N Archampong, Richard H Asmah, Cathy J Richards, Vicki J Martin, Christopher D Bayliss, Edília Botão, Leonor David, Sandra Beleza, Carla Carrilho

ORCID number: Timothy N Archampong (0000-0002-9347-0516); Richard H Asmah (0000-0003-2704-2422); Cathy J Richards (0000-0002-6551-8017); Vicki J Martin (0000-0001-9615-5442); Christopher D Bayliss (0000-0002-5564-2145); Edília Botão (0000-0002-1881-9693); Leonor David (0000-0003-4207-9258); Sandra Beleza (0000-0002-7004-3431); Carla Carrilho (0000-0003-0208-7309).

Author contributions: All authors equally contributed to this paper with conception and design of the study, literature review and analysis, drafting and critical revision and editing, and approval of the final version.

Supported by University of Ghana Research fund URF/5/ILG-003/2011-2012 to Timothy N Archampong and by the Medical Research Council UK with grant MR/M01987X/1 to Sandra Beleza.

Conflict-of-interest statement: No potential conflicts of interest.

Open-Access: This article is an open-access article which was selected by an in-house editor and fully peer-reviewed by external reviewers. It is distributed in accordance with the Creative Commons Attribution Non Commercial (CC BY-NC 4.0) license, which permits others to distribute, remix, adapt, build upon this work non-commercially, and license their derivative works on different terms, provided the original work is properly cited and the use is non-commercial. See: <https://creativecommons.org/licenses/by-nc/4.0/>

Timothy N Archampong, Department of Medicine and Therapeutics, School of Medicine and Dentistry, University of Ghana, Accra Box 4236, Ghana

Timothy N Archampong, Christopher D Bayliss, Sandra Beleza, Department of Genetics and Genome Biology, University of Leicester, Leicester LE1 7RH, United Kingdom

Richard H Asmah, Department of Medical Laboratory Sciences, School of Biomedical and Allied Health Sciences, University of Ghana, Accra Box 4236, Ghana

Cathy J Richards, Vicki J Martin, Department of Histopathology, Leicester Royal Infirmary, Leicester LE1 5WW, United Kingdom

Edília Botão, Carla Carrilho, Department of Pathology, Maputo Central Hospital, Maputo POBox 1164, Mozambique

Leonor David, Department of Pathology, Medical Faculty of the University of Porto, Porto 4200-465, Portugal

Leonor David, Institute of Molecular Pathology and Immunology at the University of Porto (Ipatimup), Porto 4200-465, Portugal

Leonor David, Instituto de Investigação e Inovação em Saúde (i3S), University of Porto, Porto 4200-465, Portugal

Carla Carrilho, Department of Pathology, Faculty of Medicine, Eduardo Mondlane University, Maputo POBox 257, Mozambique

Corresponding author: Timothy N Archampong, FRCP, MBChB, Doctor, Consultant Gastroenterologist, Department of Medicine and Therapeutics, School of Medicine and Dentistry, University of Ghana, Korle-bu, Accra Box 4236, Ghana. tarchampong@ug.edu.gh
Telephone: +233-302-968-376

Abstract

Gastroduodenal disease (GDD) was initially thought to be uncommon in Africa. Amongst others, lack of access to optimal health infrastructure and suspicion of conventional medicine resulted in the reported prevalence of GDD being significantly lower than that in other areas of the world. Following the increasing availability of flexible upper gastro-intestinal endoscopy, it has now become apparent that GDD, especially peptic ulcer disease (PUD), is prevalent across the continent of Africa. Recognised risk factors for gastric cancer (GCA) include *Helicobacter pylori* (*H. pylori*), diet, Epstein-Barr virus infection and industrial

<http://creativecommons.org/licenses/by-nc/4.0/>

Manuscript source: Invited manuscript

Received: March 15, 2019

Peer-review started: March 15, 2019

First decision: April 30, 2019

Revised: May 14, 2019

Accepted: May 31, 2019

Article in press: June 1, 2019

Published online: July 14, 2019

P-Reviewer: Hirata Y, Savopoulos CG

S-Editor: Yan JP

L-Editor: A

E-Editor: Zhang YL



chemical exposure, while those for PUD are *H. pylori*, non-steroidal anti-inflammatory drug (NSAID)-use, smoking and alcohol consumption. Of these, *H. pylori* is generally accepted to be causally related to the development of atrophic gastritis (AG), intestinal metaplasia (IM), PUD and distal GCA. Here, we perform a systematic review of the patterns of GDD across Africa obtained with endoscopy, and complement the analysis with new data obtained on pre-malignant gastric histopathological lesions in Accra, Ghana which was compared with previous data from Maputo, Mozambique. As there is a general lack of structured cohort studies in Africa, we also considered endoscopy-based hospital or tertiary centre studies of symptomatic individuals. In Africa, there is considerable heterogeneity in the prevalence of PUD with no clear geographical patterns. Furthermore, there are differences in PUD within-country despite universally endemic *H. pylori* infection. PUD is not uncommon in Africa. Most of the African tertiary-centre studies had higher prevalence of PUD when compared with similar studies in western countries. An additional intriguing observation is a recent, ongoing decline in PUD in some African countries where *H. pylori* infection is still high. One possible reason for the high, sustained prevalence of PUD may be the significant use of NSAIDs in local or over-the-counter preparations. The prevalence of AG and IM, were similar or modestly higher over rates in western countries but lower than those seen in Asia. In our new data, sampling of 136 patients in Accra detected evidence of pre-malignant lesions (AG and/or IM) in 20 individuals (14.7%). Likewise, the prevalence of pre-malignant lesions, in a sample of 109 patients from Maputo, were 8.3% AG and 8.3% IM. While *H. pylori* is endemic in Africa, the observed prevalence for GCA is rather low. However, cancer data is drawn from country cancer registries that are not comprehensive due to considerable variation in the availability of efficient local cancer reporting systems, diagnostic health facilities and expertise. Validation of cases and their source as well as specificity of outcome definitions are not explicit in most studies further contributing to uncertainty about the precise incidence rates of GCA on the continent. We conclude that evidence is still lacking to support (or not) the African enigma theory due to inconsistencies in the data that indicate a particularly low incidence of GDD in African countries.

Key words: Gastroduodenal; Peptic ulcer; Gastric cancer; Africa; Pre-malignant; Atrophy; Intestinal metaplasia; Duodenal ulcer; Gastric ulcer

©The Author(s) 2019. Published by Baishideng Publishing Group Inc. All rights reserved.

Core tip: Peptic ulcer disease (PUD) is not uncommon in Africa. There is considerable heterogeneity in its prevalence with no clear geographical patterns. There are further differences in PUD within-country despite endemic *Helicobacter pylori* infection. Most African tertiary-centre studies have higher prevalence of PUD when compared with western countries. One possible reason for its sustained prevalence is the significant use of non-steroidal anti-inflammatory drugs in local preparations. The prevalence of atrophic gastritis and intestinal metaplasia were similar or modestly higher over western countries but lower than those seen in Asia. Contrastingly, a comparatively low prevalence for gastric cancer is usually observed in African centres, although these rates might be underestimated.

Citation: Archampong TN, Asmah RH, Richards CJ, Martin VJ, Bayliss CD, Botão E, David L, Beleza S, Carrilho C. Gastro-duodenal disease in Africa: Literature review and clinical data from Accra, Ghana. *World J Gastroenterol* 2019; 25(26): 3344-3358

URL: <https://www.wjgnet.com/1007-9327/full/v25/i26/3344.htm>

DOI: <https://dx.doi.org/10.3748/wjg.v25.i26.3344>

INTRODUCTION

Gastroduodenal disease (GDD) was initially thought to be uncommon in Africa because of the lack of clinical data and the reported rarity of peptic ulcer surgery^[1].

Suspicion of conventional medicine was also considered commonplace in some regions of Africa^[2]. For instance, a study on the prevalence of dyspepsia in rural Northeastern Nigeria demonstrated that over 50% of dyspeptic patients sought medical help mainly from traditional healers^[2]. These observations and tendencies are thought to have resulted in the reported prevalence of peptic ulcer disease (PUD) and gastric cancer (GCA) in Africa being significantly lower than that in other areas of the world^[3].

The standard of care for diagnosis of PUD is typically through upper gastro-intestinal (GI) endoscopy with biopsy of any mucosal abnormality, including abnormal ulceration or polypoid lesion, a procedure that is also required for histopathological diagnosis of GCA. Imaging with computed tomography (CT), magnetic resonance imaging and endoscopic ultrasound, where available, are additional procedures to stage cancer for prognostic purposes. In most African countries, patients present at late disease stages because of the lack of universal access to optimal health infrastructure and varying culturally-influenced health seeking behaviour^[2,4]. This subsequently leads to a variety of empirical therapies for symptomatic individuals further delaying definitive diagnosis, and thereby contributing to the observed low prevalence of GDD in some areas^[1,5]. Following the increasing availability of flexible upper GI endoscopy over recent years, it has now become apparent that GDD is prevalent across the continent of Africa^[1,3]. Currently, in Ghana, there are endoscopic services and CT scan facilities in tertiary medical centres but not at most regional or district hospitals. The same situation is observed in Mozambique, where endoscopy services and CT scan is only available in the four central hospitals of the country. Despite some resources, there is still a lot to be done in improving healthcare coverage for many patients with GDD. Histological data on GCA is scarce in Africa, yet there is significant data being reported on histopathological lesions which are risk factors for development of GCA, such as atrophic gastritis (AG) and intestinal metaplasia (IM)^[6].

Recognised risk factors for GCA include *Helicobacter pylori* (*H. pylori*), diet, lifestyle preferences, Epstein-Barr virus and industrial chemical exposure^[6], while those for PUD are *H. pylori*, non-steroidal anti-inflammatory drug (NSAID)-use, smoking and alcohol consumption^[7]. Of these, *H. pylori* infection is generally accepted to be causally related to the development of AG, IM and gastric and duodenal ulceration as well as distal GCA^[8,9]. The majority of patients with duodenal ulcer (DU) are infected with *H. pylori*. Distal GCA is strongly associated with lifelong *H. pylori* infection and relative socio-economic deprivation^[10]. Proximal GCA has rather been linked to smoking, gastro-oesophageal reflux disease, obesity and medium-high socio-economic status^[10]. Although infection is universally associated with gastritis, the development into a broad spectrum of clinical and endoscopic outcomes is dependent on a number of factors, including the susceptibility of the host, the virulence of the infecting strain, and environmental co-factors^[11]. In Africa the association of *H. pylori* infection with GDD is rather complex; the infection has a high prevalence across the continent (80%-95%) irrespective of the period of birth^[12]. However, there appears to be a low overall incidence of GCA, a situation that is known as the African enigma^[10]. There is also a variable distribution of incidence of GDD in Africa which does not necessarily mirror the prevalence of *H. pylori*. For instance, in Western Africa, the prevalence of DU has been reported to be lower in the northern savannah in comparison with the coastal areas. Both regions have similar prevalence of *H. pylori* infection^[13,14]. In addition, the lack of population-based longitudinal studies also makes it difficult to evaluate the strength of association of GDD with risk factors like *H. pylori* in Africa.

This review analyses the patterns of incidence of PUD, gastric histopathological lesions and GCA in Africa. We compare patterns of GDD obtained with endoscopy with new data obtained on pre-malignant gastric histopathological lesions in Accra Ghana and Maputo Mozambique; data in Accra, Ghana are newly presented in this review and lend support to the discussion on the concept of the *H. pylori* African enigma.

SOURCES

We performed a literature review using the online databases PubMed and African Journals online. Articles were considered if they had “gastro-duodenal disease”, “peptic ulcer”, “gastric cancer” and “Africa” or “an African country” as keywords in the search. In relation to the histopathology, another search was made using “pre-malignant lesions”, “gastric atrophy” and “intestinal metaplasia” as keywords. We did not identify purposely structured cohort studies to establish incidence of GDD and therefore studies were eligible for further analysis if they were endoscopy-based

hospital or tertiary center studies of symptomatic or dyspeptic individuals referred for evaluation. The references and abstracts were checked to determine if they were eligible and to ensure they were comparable.

METHODS

Symptomatic individuals undergoing upper gastrointestinal endoscopy based on clinical need were consecutively recruited at the Korle-Bu Teaching Hospital, the major tertiary centre in Accra. Patients' symptoms and endoscopic diagnoses were captured with the study questionnaire after informed consent. The *H. pylori* status of patients was determined by performing a rapid urease test (*i.e.*, Campylobacter-Like Organism test) on gastric antral biopsy samples. Samples from the antrum, corpus and incisura angularis, as required by the updated Sydney system, were placed in separate specimen containers containing 10% formalin solution at endoscopy. *H. pylori* was identified by haematoxylin and eosin and warthin-starry staining and histologic gastritis was determined according to the updated Sydney system in the Histopathology Department, Leicester Royal Infirmary, Leicester, United Kingdom. A sample was defined as being positive for *H. pylori* if a PCR product was obtained for either a housekeeping gene (*ureI*, *ylpC*, *ppA*)^[15,16] or *glmM*^[17] as previously described. Molecular studies were performed in the Department of Genetics, University of Leicester, United Kingdom.

PATTERNS OF PEPTIC ULCER DISEASE IN AFRICA

In Africa, there is considerable heterogeneity in the prevalence of DU and gastric ulcer (GU) across the regions of the continent with no clear geographical pattern of PUD incidence (Table 1). Furthermore, there are differences in peptic ulcer incidence within-country despite universally endemic *H. pylori* infection. In Ghana, Komfo-Anokye Teaching Hospital, Kumasi, which serves the central-northern regions, has a lower incidence of PUD in comparison with Korle-Bu Teaching Hospital, Accra, which serves the Southern regions of Ghana, (Accra: DU 19.6% *vs* Kumasi: DU 3%)^[18]. Two studies in Nigeria had discordant PUD incidence: In Ibadan, Southern Nigeria, DU incidence was 2.3% relative to GU 9.3%, while Northern Nigeria had higher DU incidence 6.8% but lower GU incidence 2.7%^[19,20]. On the contrary, two separate tertiary health centres in Kenya, Nakuru and Nairobi, had similar DU incidence but different GU incidence (Nairobi: GU 8.5%, DU 9.8%; Nakuru: GU 1.9% DU 9.5%)^[21]. We realize that these differences might be related with study characteristics such as age and gender distribution of the study population; or with intrinsic features related with study design^[22]. However, mean age and sex differences were modest and did not reliably predict prevalence of PUD across these studies. For instance, a relatively low mean age was associated with both elevated and decreased PUD prevalence (*e.g.*, compare Accra, Ghana with Nakuru, Kenya, Table 1). Similarly, male populations had both higher and lower prevalence of PUD (*e.g.* compare Accra, Uganda with Mbarara, Uganda; Table 1). Most of the African tertiary-center studies had higher prevalence of PUD when compared with similar studies in western countries such as the United States^[23], Netherlands^[24] and Italy^[25], but the latter studies had considerably larger sample sizes (Table 1). Additionally, it is also worth noting that hospital-based endoscopic studies with relatively small sample sizes in Africa are more likely to suffer selection bias with more advanced clinical presentations^[26]. Nevertheless, in an unselected community study in Lusaka, Zambia^[27], PUD was comparable in prevalence to other western countries (Table 1).

Globally, PUD incidence has decreased over recent decades. This has been demonstrated by several population-based prospective studies in Europe (Netherlands^[28], Spain^[29], Belgium^[30], United Kingdom^[31]), North America (United States^[32]) and Asia (India^[33], Hong Kong^[34], Taiwan^[35]). Time trend prospective studies are however scarce in Africa. A retrospective descriptive study reported on patients who underwent upper GI endoscopy in the endoscopy unit of Obafemi Awolowo University Teaching Hospital, Ile-Ife, Nigeria, between January 2000 and December 2010^[36]. Over the study period, 292 patients (15.8%) were diagnosed with DU. The prevalence of DU for 2000-2004 was 22.9% ($n = 211$ patients) compared with 9.2% ($n = 81$) for 2005-2010 ($P < 0.001$)^[36]. These prevalence rates were much lower than the 38.7% reported by Ndububa *et al.*^[37] for the years 1992-1999 at the same institution. In Uganda, two separate cross-sectional studies also showed reduction in DU prevalence from 18% in 2005^[38] to 3.8% in 2014^[39].

Overall, the data shows that the incidence of PUD has declined in many countries.

Table 1 Patterns of incidence of peptic ulcer disease in hospital-based endoscopic studies of dyspeptic patients

Country	Year(s) of study	Mean age (yr)	Males	Females	<i>n</i>	Incidence rate (%)		
			<i>n</i> (%)	<i>n</i> (%)		DU	GU	Total
Ibadan, Nigeria ^[19]	2008-2009	49.2 ± 13.8	39 (45.3)	47 (54.7)	86	2.3	9.3	11.6
Northern Nigeria ^[17]	2012	49.5 ± 15	68 (46)	80 (54)	148	6.8	2.7	9.5
Mbarara, Uganda ^[39]	2014-2015	53.5 ± 17.8	110 (59.8)	74 (40.2)	184	3.8	7.6	11.4
Accra, Ghana ^[75]	1995-2002	43.7 ± 10.6	3777 (54.1)	3200 (45.9)	6977	19.6	5.0	24.6
Kumasi, Ghana ^[18]	2006-2011	-	1337 (43)	1773 (57)	3110	3.0	4.7	7.7
Nairobi, Kenya ^[21]	2011-2013	47.0	1368 (43.5)	1779 (56.5)	3147	9.8	8.5	18.3
Nakuru, Kenya ^[21]	2011-2013	42.0	1372 (46.7)	1564 (53.3)	2936	9.5	1.9	11.4
Kilimanjaro, Tanzania ^[76]	2009-2010	Median: 48.0	99 (47.6)	109 (52.4)	208	18.3	5.8	24.1
Lusaka, Zambia ^[27]	1999-2002	-	79 (35.7)	142 (64.3)	221	3.1	0.5	3.6
Rotterdam, Netherlands ^[24]	1996-2005	55.6 ± 17.9	9222 (46.1)	10,784 (53.9)	20006	3.5	2.4	5.9
Rome, Italy ^[25]	2005-2007	Median: 62.5	-	-	11148	1.8	0.9	2.7
United States ^[23]	1996-2005	-	-	-	6438	-	-	1.5-3.0

DU: Duodenal ulcer; GU: Gastric ulcer.

Most likely this phenomenon is a result of the decrease in *H. pylori* infection, particularly in Western populations^[40]. However, it is unclear the reasons for the decline in some African countries where *H. pylori* infection rates are still high. Management of PUD has improved substantially due to implementation of therapies for *H. pylori* and the introduction of proton pump inhibitors (PPIs) which are increasingly accessible globally. The continued occurrence of PUD is increasingly due, at least in part, to the widespread use of low-dose aspirin and NSAIDs, especially in Western countries and among older patients^[37,40]. A cross-sectional study of 242 dyspeptic patients in Accra, Ghana, evaluated the endoscopic spectrum of disease at a major tertiary centre^[3]. A third (32.6%) of the study patients had a history of NSAID-use, especially as ingredients in local over-the-counter medicinal/herbal preparations^[3]. In this study in Accra, there was an increased prevalence of DU in *H. pylori*-infected patients taking NSAIDs^[3]. NSAID-use may therefore contribute to the varying PUD prevalence between and within countries in a *H. pylori* endemic continent such as Africa.

GASTRIC HISTOPATHOLOGY IN DYSPEPTIC PATIENTS

Gastric atrophy is an established risk factor for GCA^[41]. Additionally, the risk of GCA increases with a greater extent and higher degree of AG^[42]. Further studies suggest that IM is also a risk factor for GCA^[43,44]. Pre-malignant lesions, AG and IM, are not uncommon in tertiary center studies of symptomatic patients undergoing endoscopy in Africa. Excluding the 2007 study in Kenya by Kalebi *et al*^[4], which detected an AG rate of 57%, most hospital-based endoscopic studies have shown prevalence rates of AG of 5%-38% and for IM of 4%-32% across populations in sub-Saharan Africa (Table 2). These values were either similar to or had a modestly higher prevalence as compared to rates in western countries (*e.g.*, Sweden, Finland or United States) but lower than those seen in Asia (Korea, China) (Table 2).

Gastric histopathology in Accra, Ghana and Maputo, Mozambique: A comparative analysis

The updated Sydney system of classification of gastritis emphasizes the importance of combining topographical, morphological and aetiological information into a scheme that helps to generate reproducible and clinically useful information^[45]. It includes biopsies at the antrum^[2], body^[2] and incisura angularis^[1]. Two such *H. pylori* studies in Africa comprehensively evaluated gastric histopathology and its relationship with *H. pylori* infection and gastric diseases (Table 3). The first was a prospective descriptive study conducted at the Maputo Central Hospital, Mozambique that estimated the prevalence of *H. pylori*, chronic gastritis and IM in 109 consecutive dyspeptic patients who were eligible for upper GI endoscopy between 2005 and 2006^[46]. The second was a new study at the Korle-Bu Teaching Hospital (KBTH), Accra, during which clinical and histopathological assessments were performed on 136 dyspeptic patients referred

Table 2 Hospital-based endoscopic studies of pre-malignant lesions

Country	Study population	n	Gastric atrophy frequency (%)	Intestinal metaplasia frequency (%)
Cote d'Ivoire, Attia <i>et al</i> ^[77] , 2001	Dyspeptic patients	137	-	19
Sudan, El-Mahdi <i>et al</i> ^[78] , 1998	Dyspeptic <i>H. pylori</i> infected patients	78	37	4
Egypt, Abdel-Wahab <i>et al</i> ^[79] , 1996	DU patients	43	-	26
Gambia, Campbell <i>et al</i> ^[80] , 2001	Dyspeptic patients	45	10	12
Uganda, Wabinga <i>et al</i> ^[81] , 2005	Dyspeptic patients	114	17	7
Kenya, Kalebi <i>et al</i> ^[82] , 2007	Dyspeptic patients	71	57	11
Nigeria, Ndububa <i>et al</i> ^[83] , 2007	DU and GC patients	115	-	32 GC 16 DU
Jos, Nigeria, Tanko <i>et al</i> ^[52] , 2008	Dyspeptic patients	100	38	28
Nigeria, Badmos <i>et al</i> ^[84] , 2009	Dyspeptic patients	1047	5	9
Tunisia, Jmaa <i>et al</i> ^[85] , 2010	Dyspeptic patients	352	35	11
Ilorin, Nigeria, Badmos <i>et al</i> ^[86] , 2010	Dyspeptic patients	57	32	9
Maputo, Mozambique Carrilho <i>et al</i> ^[46] , 2009	Dyspeptic patients	109	8.3	8.3
United States, Almouradi <i>et al</i> ^[87] , 2013	Symptomatic individuals	437	-	15.0 ¹
Finland, Eriksson <i>et al</i> ^[88] , 2008	Symptomatic individuals	505	-	18.8 (antrum) 7.1 (body)
Sweden, Borch <i>et al</i> ^[89] , 2000	Symptomatic individuals	501	9.4 ¹	
Korea, Kim <i>et al</i> ^[90] , 2008.	Symptomatic individuals	713	42.7 (antrum) 38.1 (body)	42.5 (antrum) 32.7 (body)
China, Zou <i>et al</i> ^[91] , 2011	Symptomatic individuals	1,022	63.8 ¹	
Japan, Sakitani <i>et al</i> ^[47] , 2011	Symptomatic individuals	1395	-	17.2 (antrum) 10.8 (body)

¹Prevalence of gastric atrophy or intestinal metaplasia in the antrum and/or body. DU: Duodenal ulcer; GU: Gastric ulcer; *H. pylori*: *Helicobacter pylori*.

for upper GI endoscopy at the major tertiary centre between 2015 and 2016. The results of this latter study and comparisons with the Mozambique dataset are presented here.

Overall, the commonest histologic diagnosis in both centres was chronic inflammation (*i.e.*, 84.6% in Accra and 90.8% in Mozambique) irrespective of location in the stomach^[46]. Chronic infiltrates were detected in more than twice as many patients as opposed to active inflammation with neutrophilic activity, (**Figure 1**). Of the 136 patients sampled in Accra, 20 (14.7%) had evidence of pre-malignant lesions (atrophy and/or IM). The majority showed mild gastric atrophy 6/9 (66.7%; T1 score) or IM 10/16 (62.5%; M1 score), respectively, (see **Table 4** for the overview data and **Figure 2** for an example of the tissue staining). Likewise, the prevalence of pre-malignant lesions, in a sample of 109 patients from Maputo, were 8.3% AG and 8.3% IM. Most of which were located distally, in the antrum or incisura angularis^[46], as seen in KBTH, Accra. A study in Japan evaluated for gastric histopathological differences between antrum and body in 1395 patients, in a country where endoscopy is very accessible to patients due to high incidence of GCA^[47]. This study reported the prevalence of IM as 17.2% and 10.8% in antrum and body respectively. IM in this Japanese study was considerably higher than that seen in Accra, Maputo and most African tertiary centre studies (**Table 2**) where gastric pathology may be rather over-represented. Interestingly, in Finland, an European country with low *H. pylori* prevalence and GCA incidence, IM in the body, 7.1%, was higher than that seen in Accra and Maputo. Overall, there was a higher prevalence of IM in the gastric body of Japanese samples as compared to the Accra, Maputo and Finland samples. This is

Table 3 Gastric histopathological lesions at the Korle Bu Teaching Hospital, Accra, Ghana and Maputo Central Hospital, Mozambique

	Accra, Ghana	Maputo, Mozambique
Total	136	109
Median age (yr)	52	37
Sex	<i>n</i> (%)	<i>n</i> (%)
Female	61 (44.9)	74 (67.9)
Male	75 (55.1)	35 (32.1)
<i>H. pylori</i> prevalence:		
Histology	54.4%	62.4%
<i>H. pylori</i> prevalence:		
PCR	93.3%	92.6%
Active inflammation	<i>n</i> (%)	<i>n</i> (%)
Antrum	47 (34.6)	57 (53.8)
Incisura	45 (37.2)	58 (54.2)
Body	40 (29.9)	21 (31.3)
Chronic inflammation	<i>n</i> (%)	<i>n</i> (%)
Antrum	115 (84.6)	100 (94.4)
Incisura	97 (80.2)	99 (92.5)
Body	97 (72.4)	57 (85.1)
Pattern of gastritis	<i>n</i> (%)	<i>n</i> (%)
antral-predominant	51 (37.5)	54 (49.5)
Pangastritis (antrum and body)	70 (51.5)	45 (41.3)
Gastric atrophy	<i>n</i> (%)	<i>n</i> (%)
Antrum	5 (3.7)	2 (2.5)
Incisura	7 (5.8)	6 (6.2)
Body	3 (2.2)	1 (1.5)
Intestinal metaplasia	<i>n</i> (%)	<i>n</i> (%)
Antrum	10 (7.3)	4 (3.8)
Incisura	6 (5.0)	7 (6.5)
Body	1 (0.7)	0 (0.0)
Pre-malignant lesions	<i>n</i> (%)	<i>n</i> (%)
Gastric atrophy and/or intestinal metaplasia	20 (14.7)	15 (13.8)

H. pylori: *Helicobacter pylori*.

important as IM in the gastric body has been identified as an independent risk factor for GCA following multi-variate analysis^[47].

The prevalence of *H. pylori* in the sampled patients by histopathology in Accra was 54.4% with 74 out of 136 patients infected (see Table 3; and Figure 3 for a representative histopathological sample); whereas 93.3% had molecular evidence of *H. pylori* by PCR. Comparably, *H. pylori* was identified in 68 out of 109 cases (62.4%) based on histological assessment but 92.6% when assessed by PCR in the Mozambique study^[46]. Furthermore, *H. pylori* was significantly more frequent when chronic inflammatory infiltrate, neutrophilic activity or degenerative surface epithelial damage were observed, regardless of the anatomic location^[46]. It has been shown that *H. pylori* detection by histopathology may be more difficult in situations where the cellular environment may not be conducive for bacterial growth and/or when the bacterial load is very low. PCR is more sensitive as the grade of atrophy and/or IM progress toward malignancy^[48]. Moreover, the accuracy of histopathology identification of *H. pylori* is affected by PPI and antibiotic use, which were not an exclusion criteria for these studies^[49,50].

In Accra, demographically, patients with either gastric atrophy or IM were comparable but patients with pre-malignant lesions were more likely to be older than 50 years and male. However, no statistically significant differences were observed for the presence of IM and glandular atrophy according to *H. pylori* colonization in either Ghana or Mozambique^[46]. In this histopathology study 3 (2.9%) patients had GCA in Accra with none represented in the Maputo study of 109 individuals. However, a

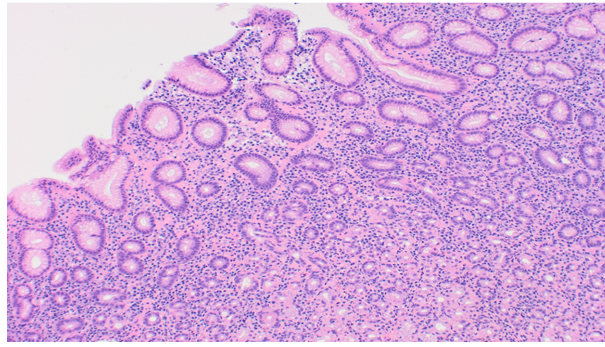


Figure 1 Chronic gastritis affecting the mucosa of the gastric antrum (Haematoxylin and eosin stain; Magnification $\times 100$).

recent study from Mozambique reported a prevalence of 1.5% from Maputo Central Hospital^[51]. These low prevalence rates were comparable to similarly designed hospital-based studies in Nigeria (3.0%)^[52] and Uganda (3.0%)^[53].

Both studies (Accra and Maputo) demonstrated similar topographical distribution of *H. pylori* gastritis with antral involvement being the most common. In KBTH, Accra, antral gastritis was present in 89% (antral-predominant gastritis 37.5%, pan-gastritis (antrum and body) 51.5%, normal histology 11.0%). Chronic inflammation, lymphoid follicles, and neutrophilic activity were more frequent and of increased severity in the antrum and incisura than in the corpus^[46]. There was no demonstrable significant relationship between the pattern of histologic gastritis and clinical gastric-duodenal disease. In general, the topographic distribution of acute *H. pylori* infection has been associated with specific gastro-duodenal phenotypes^[54]. Infection of the antrum stimulates gastrin release which leads to increased acid production from parietal cells, resident mainly in the body^[54]. This results in an elevated duodenal acid load, gastric metaplasia and subsequent duodenal ulceration^[55]. On the other hand, patients with GU or GCA, have inflammation involving acid-secreting parietal cells of the body evolving with gastric atrophy and hypochlorhydria^[56]. Essentially, an increase in acid secretion limits *H. pylori* gastritis to the antrum, increasing the risk of DU disease while a reduction in acid secretion allows more proximal inflammation and increases the risk of AG, GU, and GCA. Gastritis and atrophy negatively influence acid secretion^[57]. Of note, both histopathologic studies demonstrate that antral inflammation was more common than body-gastritis in most infected individuals. As antral inflammation is known to be negatively associated with GCA^[58], the high antral inflammation may explain the low prevalence of GCA in these populations.

GEOGRAPHICAL DISTRIBUTION OF GASTRIC CANCER ACROSS SUB-SAHARAN AFRICA

GCA remains an important cancer worldwide and was estimated to be responsible for over 1000000 new cases in 2018 and an estimated 783000 deaths, *i.e.*, approximately 1 in every 12 deaths globally^[59]. Consequentially it is the fifth most frequently diagnosed cancer and the third leading cause of cancer mortality^[59]. Age-standardized incidence rates are significantly elevated in Eastern Asia (45.3 per 100000 persons/year), when compared with rates in Northern America (7.6 per 100000 persons/year) and Northern Europe (9.3 per 100000 persons/year)^[59]. These relatively low incidence rates are comparable to those seen across many regions of Africa (Table 5). The cumulative incidence rate up to and including an age of 74 years, expressed as a percentage of cancers of the stomach in sub-Saharan-Africa was 0.46% whereas the comparable worldwide rate was 1.39%^[60].

About 24000 new cases of stomach cancer and 22000 deaths were estimated to have occurred in 2002 in Africa, with three quarters (18000 new cases) occurring in sub-Saharan Africa^[60]. The national cancer registries with the highest recorded cumulative incidence rates are Harare (Zimbabwe), Bamako (Mali), Kenya, Réunion (France), Rwanda and Uganda^[60] (Table 5).

The significant decline in the incidence of non-cardia GCA in developed countries is an established phenomenon which is associated with improvements in food preservation and a decline in transmission of and infection by *H. pylori*^[61]. On the contrary, no decrease was noted in rates of histologically diagnosed cases in South

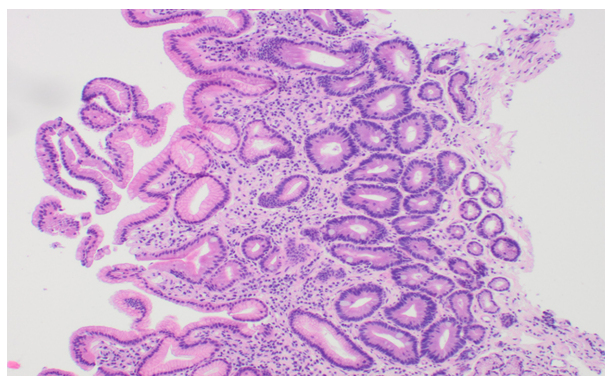


Figure 2 Gastric antral mucosa showing atrophy, intestinal metaplasia and mild chronic inflammation (Haematoxylin and eosin stain; Magnification $\times 100$).

Africa between 1986 and 1995^[60]. There is also no indication that the incidence of stomach cancer is declining in Africa; time trends for the cancer registries in Kampala (Uganda)^[62], Harare (Zimbabwe)^[63], and Bamako (Mali)^[60] indicate little or no change in incidence during the past 20 years^[60]. Notwithstanding, similar concerns remain about the data as encountered in the trends of PUD. In addition to late presentation and selection bias, cancer data in Africa is obtained from GLOBOCAN which is subsequently drawn from country cancer registries^[4,26]. Such registries are not comprehensive due to considerable variation in the availability of efficient local cancer reporting systems or databases, essential diagnostic health equipment (endoscopy, histopathology, imaging) and expertise^[26]. Validation of cases and their source as well as specificity of outcome definitions are not explicit in most studies further contributing to uncertainty about the precise incidence rates of GCA on the continent^[4,22].

THE *HELICOBACTER PYLORI* AFRICAN ENIGMA

Helicobacter pylori infection is endemic in Africa, however GDD prevalence is reportedly low especially for GCA^[64]. This phenomenon is referred to as the “African enigma”—a high prevalence of *H. pylori* with an apparently low incidence of GCA^[13]. The concept was challenged based on the potential problems with the data upon which the theory was based. For example, in Africa, we cannot ignore major difficulties in access to healthcare, endoscopy and radiological examinations, all of which are deemed to have reduced the likelihood of a diagnosis of PUD and GCA^[1]. On the contrary, patients with other common cancers such as oesophageal and cervical cancer are represented in hospitals in Africa so it remains curious why GCA patients would selectively not seek care^[65].

Bacterial virulence has been studied to determine disease specific associations which might explain differences in GDD incidence across populations. Several studies in Africa have demonstrated that most *H. pylori* infections are of the virulent type as they were predominantly *cagA* and *vacA* s1 positive^[66-68], therefore factors other than *H. pylori* virulence are likely of major importance in sub-Saharan Africa.

Environmental factors are essential in modulating *H. pylori* responses as well. There is a dietary component, with foods high in salt and low fruit intake increasing GCA risk. Both alcohol consumption and active tobacco smoking are also established risk factors^[69,70]. Regular consumption of fresh fruits and vegetables seems to delay the onset of AG^[71,72]. Further, co-infection of mice with *Heligmosomoides polygyrus*, an extra-cellular mouse parasite, and *Helicobacter felis* has been shown to alter the immune response with down-regulation of Th1 dependent IgG2a serum antibody response to a greater extent than the Th2 dependent IgG1 antibody response leading to a reduction in *H. pylori*-induced gastric atrophy^[73]. This suggests that other common infections in Africa might, likewise, affect the outcome of *H. pylori* infection. Differences in GCA rates between African countries and other parts of the world may accordingly be related to differences in intake of particular food, possibly co-existing infections or composition of gut microbiota. As with other infections, the natural history of *H. pylori* infection is determined by a range of microbe, host and environmental co-factors^[74].

Table 4 Severity of atrophic gastritis and intestinal metaplasia at the Korle Bu Teaching Hospital, Accra, Ghana (*n* = 136), as per updated Sydney system

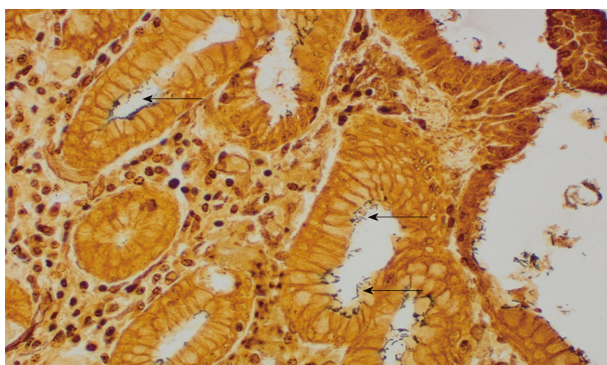
Atrophy (<i>n</i> = 9)		Metaplasia (<i>n</i> = 16)	
Grade	<i>n</i> (%)	Grade	<i>n</i> (%)
T1	6 (66.7)	M1	10 (62.5)
T2	2 (22.2)	M2	5 (31.3)
T3	1 (11.1)	M3	1 (6.2)

CONCLUSION

PUD and pre-malignant lesions are not uncommon in Africa when compared with the West despite contrasting *H. pylori* prevalence. However, lack of cohort studies drawn from the general population make accurate evaluation of incidence of GDD in Africa elusive. Additionally, the lack of a temporal relationship with incidence of risk factors, such as *H. pylori* infection, prevents an assessment of the strength of such risks. Tertiary center studies are heterogeneous between and within-countries, subject to selection bias and may not be generalizable to the wider population. Therefore, longitudinal studies are required to elucidate how a myriad of environmental factors and gut microbiota (*e.g.*, helminthic infections) act synergistically with host and *H. pylori* in expression of gastro-duodenal phenotype in African countries. Evidence is still lacking to support (or not) the African enigma theory, due to this theory being based on inconsistent data that indicate a particularly low incidence of GDD in African countries.

Table 5 Age-Standardized Incidence rates of gastric cancer in sub-Saharan Africa^[60]

Region	Years of study	Age-standardized incidence rate (per 100000 person-years)		Total
		Males	Females	
Central Africa				
Congo, Brazzaville	2009-2013	2.0	1.5	3.5
East Africa, Mainland				
Ethiopia, Addis Ababa	2012-2013	3.0	2.2	5.2
Kenya, Eldoret	2008-2011	9.8	7.9	17.7
Kenya, Nairobi	2007-2011	9.2	9.7	18.9
Malawi, Blantyre	2009-2010	4.4	3.5	7.9
Mozambique, Beira	2009-2013	0.8	0.4	1.2
Uganda, Kampala	2008-2012	6.4	3.3	9.7
Zimbabwe, Bulawayo	2011-2013	4.8	5.7	10.5
Zimbabwe, Harare	2010-2012	18.7	16.3	35.0
East Africa, Islands				
France Reunion	2011	16.8	6.3	23.1
Mauritius	2010-2012	7.0	3.2	10.2
Seychelles	2009-2012	3.7	3.2	6.9
Southern Africa				
Botswana	2005-2008	1.1	0.4	1.5
Namibia	2009	5.0	2.0	7.0
South Africa, National	2007	4.0	1.8	5.8
South Africa, East Cape	2008-2012	1.4	0.8	2.2
Western Africa				
Benin, Cotonou	2013-2015	11.3	2.4	13.7
Cote D'Ivoire, Abidjan	2012-2013	2.8	2.8	5.6
The Gambia	2007-2011	2.2	0.8	3.0
Guinea, Conakry	2001-2010	4.7	2.8	7.5
Mali, Bamako	2010-2014	19.1	15.3	34.4
Niger, Niamey	2006-2009	2.2	1.6	3.8
Nigeria, Abuja	2013	4.4	2.2	6.6
Nigeria, Calabar	2009-2013	0.7	1.4	2.1
Nigeria, Ibadan	2006-2009	2.8	1.3	4.1

**Figure 3** *Helicobacter pylori* infection. The organisms are indicated with arrows (Warthin-Starry stain; Magnification × 400).

ACKNOWLEDGEMENTS

The new work presented here was supported by University of Ghana Research fund URF/5/ILG-003/2011-2012 to Timothy N Archampong and by the Medical Research

Council UK with grant MR/M01987X/1 to Sandra Belez. We are grateful to Dr. Rafiq Okine for his assistance in statistical analysis of the histopathological data.

REFERENCES

1. **Agha A**, Graham DY. Evidence-based examination of the African enigma in relation to *Helicobacter pylori* infection. *Scand J Gastroenterol* 2005; **40**: 523-529 [PMID: [16036504](#) DOI: [10.1080/00365520510012280](#)]
2. **Holcombe C**, Omotara BA, Padonu MK, Bassi AP. The prevalence of symptoms of dyspepsia in north eastern Nigeria. A random community based survey. *Trop Geogr Med* 1991; **43**: 209-214 [PMID: [1750117](#) DOI: [10.1016/0035-9203\(91\)90194-4](#)]
3. **Archampong TN**, Asmah RH, Wiredu EK, Gyasi RK, Nkrumah KN. Factors associated with gastro-duodenal disease in patients undergoing upper GI endoscopy at the Korle-Bu Teaching Hospital, Accra, Ghana. *Afr Health Sci* 2016; **16**: 611-619 [PMID: [27605979](#) DOI: [10.4314/ahs.v16i2.32](#)]
4. **Asombang AW**, Kelly P. Gastric cancer in Africa: What do we know about incidence and risk factors? *Trans R Soc Trop Med Hyg* 2012; **106**: 69-74 [PMID: [22136952](#) DOI: [10.1016/j.trstmh.2011.11.002](#)]
5. **McKENZIE MB**. Peptic ulceration in the African of Durban. *S Afr Med J* 1957; **31**: 1041-1045 [PMID: [13495647](#)]
6. **World Cancer Research Fund International/American Institute for Cancer Research**. Continuous Update Project Report: Diet, Nutrition, Physical Activity and Stomach Cancer, 2016. Available from: <https://www.wcrf.org/sites/default/files/Stomach-Cancer-2016-Report.pdf>
7. **Rosenstock S**, Jørgensen T, Bonnevie O, Andersen L. Risk factors for peptic ulcer disease: A population based prospective cohort study comprising 2416 Danish adults. *Gut* 2003; **52**: 186-193 [PMID: [12524398](#) DOI: [10.1136/gut.52.2.186](#)]
8. **Park YH**, Kim N. Review of atrophic gastritis and intestinal metaplasia as a premalignant lesion of gastric cancer. *J Cancer Prev* 2015; **20**: 25-40 [PMID: [25853101](#) DOI: [10.15430/JCP.2015.20.1.25](#)]
9. **Parsonnet J**, Friedman GD, Vandersteen DP, Chang Y, Vogelman JH, Orentreich N, Sibley RK. *Helicobacter pylori* infection and the risk of gastric carcinoma. *N Engl J Med* 1991; **325**: 1127-1131 [PMID: [1891020](#) DOI: [10.1056/NEJM199110173251603](#)]
10. **Helicobacter and Cancer Collaborative Group**. Gastric cancer and *Helicobacter pylori*: A combined analysis of 12 case control studies nested within prospective cohorts. *Gut* 2001; **49**: 347-353 [PMID: [11511555](#) DOI: [10.1136/gut.49.3.347](#)]
11. **Atherton JC**. The clinical relevance of strain types of *Helicobacter pylori*. *Gut* 1997; **40**: 701-703 [PMID: [9245920](#) DOI: [10.1136/gut.40.6.701](#)]
12. **Pounder RE**, Ng D. The prevalence of *Helicobacter pylori* infection in different countries. *Aliment Pharmacol Ther* 1995; **9** Suppl 2: 33-39 [PMID: [8547526](#) DOI: [10.1016/0741-8329\(94\)00077-Q](#)]
13. **Holcombe C**. *Helicobacter pylori*: The African enigma. *Gut* 1992; **33**: 429-431 [PMID: [1582581](#) DOI: [10.1136/gut.33.4.429](#)]
14. **Tovey FI**, Tunstall M. Duodenal ulcer in black populations in Africa south of the Sahara. *Gut* 1975; **16**: 564-576 [PMID: [1098969](#) DOI: [10.1136/gut.16.7.564](#)]
15. **Jolley KA**, Bray JE, Maiden MCJ. Open-access bacterial population genomics: BIGSdb software, the PubMLST.org website and their applications. *Wellcome Open Res* 2018; **3**: 124 [PMID: [30345391](#) DOI: [10.12688/wellcomeopenres.14826.1](#)]
16. **Achtman M**, Azuma T, Berg DE, Ito Y, Morelli G, Pan ZJ, Suerbaum S, Thompson SA, van der Ende A, van Doorn LJ. Recombination and clonal groupings within *Helicobacter pylori* from different geographical regions. *Mol Microbiol* 1999; **32**: 459-470 [PMID: [10320570](#) DOI: [10.1046/j.1365-2958.1999.01382.x](#)]
17. **Lu JJ**, Peng CL, Shyu RY, Chen CH, Lou Q, Chong SK, Lee CH. Comparison of five PCR methods for detection of *Helicobacter pylori* DNA in gastric tissues. *J Clin Microbiol* 1999; **37**: 772-774 [PMID: [9986850](#)]
18. **Gyedu A**, Yorke J. Upper gastrointestinal endoscopy in the patient population of Kumasi, Ghana: Indications and findings. *Pan Afr Med J* 2014; **18**: 327 [PMID: [25478048](#) DOI: [10.11604/pamj.2014.18.327.4806](#)]
19. **Jemilohun AC**, Otegbayo JA, Ola SO, Oluwasola OA, Akere A. Prevalence of *Helicobacter pylori* among Nigerian patients with dyspepsia in Ibadan. *Pan Afr Med J* 2010; **6**: 18 [PMID: [21734925](#) DOI: [10.4314/pamj.v6i1.69090](#)]
20. **Bojuwoye ABO**, Ibrahim Olatunde O K, Ogunlaja Ayotunde O BJB. Relationship between *Helicobacter Pylori* Infection and Endoscopic Findings among Patients with Dyspepsia in North Central, Nigeria. *Sudan JMS* 2016; **11**: 167-172
21. **Makanga W**, Nyaoncha A. Upper Gastrointestinal Disease in Nairobi and Nakuru Counties, Kenya; A Two Year Comparative Endoscopy Study. *Ann Afric Surg* 2014; **11**: 35-39
22. **Lin KJ**, García Rodríguez LA, Hernández-Díaz S. Systematic review of peptic ulcer disease incidence rates: Do studies without validation provide reliable estimates? *Pharmacoepidemiol Drug Saf* 2011; **20**: 718-728 [PMID: [21626606](#) DOI: [10.1002/pds.2153](#)]
23. **Manuel D**, Cutler A, Goldstein J, Fennerty MB, Brown K. Decreasing prevalence combined with increasing eradication of *Helicobacter pylori* infection in the United States has not resulted in fewer hospital admissions for peptic ulcer disease-related complications. *Aliment Pharmacol Ther* 2007; **25**: 1423-1427 [PMID: [17539981](#) DOI: [10.1111/j.1365-2036.2007.03340.x](#)]
24. **Groenen MJ**, Kuipers EJ, Hansen BE, Ouwendijk RJ. Incidence of duodenal ulcers and gastric ulcers in a Western population: Back to where it started. *Can J Gastroenterol* 2009; **23**: 604-608 [PMID: [19816622](#) DOI: [10.1155/2009/181059](#)]
25. **Sbrozzi-Vanni A**, Zullo A, Di Giulio E, Hassan C, Corleto VD, Lahner E, Annibale B. Low prevalence of idiopathic peptic ulcer disease: An Italian endoscopic survey. *Dig Liver Dis* 2010; **42**: 773-776 [PMID: [20444661](#) DOI: [10.1016/j.dld.2010.03.019](#)]
26. **Asombang AW**, Rahman R, Ibdah JA. Gastric cancer in Africa: Current management and outcomes. *World J Gastroenterol* 2014; **20**: 3875-3879 [PMID: [24833842](#) DOI: [10.3748/wjg.v20.i14.3875](#)]
27. **Fernando N**, Holton J, Zulu I, Vaira D, Mwaba P, Kelly P. *Helicobacter pylori* infection in an urban African population. *J Clin Microbiol* 2001; **39**: 1323-1327 [PMID: [11283050](#) DOI: [10.1128/JCM.39.4.1323-1327.2001](#)]

- 28 **Post PN**, Kuipers EJ, Meijer GA. Declining incidence of peptic ulcer but not of its complications: A nation-wide study in The Netherlands. *Aliment Pharmacol Ther* 2006; **23**: 1587-1593 [PMID: [16696807](#) DOI: [10.1111/j.1365-2036.2006.02918.x](#)]
- 29 **Pérez-Aisa MA**, Del Pino D, Siles M, Lanas A. Clinical trends in ulcer diagnosis in a population with high prevalence of *Helicobacter pylori* infection. *Aliment Pharmacol Ther* 2005; **21**: 65-72 [PMID: [15644047](#) DOI: [10.1111/j.1365-2036.2004.02297.x](#)]
- 30 **Bartholomeeusen S**, Vandenbroucke J, Truyers C, Buntinx F. Time trends in the incidence of peptic ulcers and oesophagitis between 1994 and 2003. *Br J Gen Pract* 2007; **57**: 497-499 [PMID: [17550678](#)]
- 31 **Cai S**, García Rodríguez LA, Massó-González EL, Hernández-Díaz S. Uncomplicated peptic ulcer in the UK: Trends from 1997 to 2005. *Aliment Pharmacol Ther* 2009; **30**: 1039-1048 [PMID: [19709097](#) DOI: [10.1111/j.1365-2036.2009.04131.x](#)]
- 32 **Lewis JD**, Bilker WB, Brensinger C, Farrar JT, Strom BL. Hospitalization and mortality rates from peptic ulcer disease and GI bleeding in the 1990s: Relationship to sales of nonsteroidal anti-inflammatory drugs and acid suppression medications. *Am J Gastroenterol* 2002; **97**: 2540-2549 [PMID: [12385436](#) DOI: [10.1111/j.1572-0241.2002.06037.x](#)]
- 33 **Dutta AK**, Chacko A, Balekuduru A, Sahu MK, Gangadharan SK. Time trends in epidemiology of peptic ulcer disease in India over two decades. *Indian J Gastroenterol* 2012; **31**: 111-115 [PMID: [22766645](#) DOI: [10.1007/s12664-012-0201-5](#)]
- 34 **Xia B**, Xia HH, Ma CW, Wong KW, Fung FM, Hui CK, Chan CK, Chan AO, Lai KC, Yuen MF, Wong BC. Trends in the prevalence of peptic ulcer disease and *Helicobacter pylori* infection in family physician-referred uninvestigated dyspeptic patients in Hong Kong. *Aliment Pharmacol Ther* 2005; **22**: 243-249 [PMID: [16091062](#) DOI: [10.1111/j.1365-2036.2005.02554.x](#)]
- 35 **Wu CY**, Wu CH, Wu MS, Wang CB, Cheng JS, Kuo KN, Lin JT. A nationwide population-based cohort study shows reduced hospitalization for peptic ulcer disease associated with *H pylori* eradication and proton pump inhibitor use. *Clin Gastroenterol Hepatol* 2009; **7**: 427-431 [PMID: [19264578](#) DOI: [10.1016/j.cgh.2008.12.029](#)]
- 36 **Ijarotimi O**, Soyoye DO, Adekanle O, Ndububa DA, Umoru BI, Alatise OI. Declining prevalence of duodenal ulcer at endoscopy in Ile-Ife, Nigeria. *S Afr Med J* 2017; **107**: 750-753 [PMID: [28875881](#) DOI: [10.7196/SAMJ.2017.v107i9.12342](#)]
- 37 **Ndububa DA**, Agbakwuru AE, Adebayo RA, Olasode BJ, Olaomi OO, Adeosun OA, Arigbabu AO. Upper gastrointestinal findings and incidence of *Helicobacter pylori* infection among Nigerian patients with dyspepsia. *West Afr J Med* 2001; **20**: 140-145 [PMID: [11768014](#)]
- 38 **Ogwang DM**. Dyspepsia: Endoscopy findings in Uganda. *Trop Doct* 2003; **33**: 175-177 [PMID: [12870612](#) DOI: [10.1177/004947550303300322](#)]
- 39 **Obayo S**, Muzoora C, Ocama P, Cooney MM, Wilson T, Probert CS. Upper gastrointestinal diseases in patients for endoscopy in South-Western Uganda. *Afr Health Sci* 2015; **15**: 959-966 [PMID: [26957987](#) DOI: [10.4314/ahs.v15i3.33](#)]
- 40 **Sung JJ**, Kuipers EJ, El-Serag HB. Systematic review: the global incidence and prevalence of peptic ulcer disease. *Aliment Pharmacol Ther* 2009; **29**: 938-946 [PMID: [19220208](#) DOI: [10.1111/j.1365-2036.2009.03960.x](#)]
- 41 **Correa P**. Chronic gastritis: A clinico-pathological classification. *Am J Gastroenterol* 1988; **83**: 504-509 [PMID: [3364410](#)]
- 42 **de Vries AC**, Kuipers EJ. Epidemiology of premalignant gastric lesions: Implications for the development of screening and surveillance strategies. *Helicobacter* 2007; **12** Suppl 2: 22-31 [PMID: [17991173](#) DOI: [10.1111/j.1523-5378.2007.00562.x](#)]
- 43 **Uemura N**, Okamoto S, Yamamoto S, Matsumura N, Yamaguchi S, Yamakido M, Taniyama K, Sasaki N, Schlemper RJ. *Helicobacter pylori* infection and the development of gastric cancer. *N Engl J Med* 2001; **345**: 784-789 [PMID: [11556297](#) DOI: [10.1056/NEJMoa001999](#)]
- 44 **Kim N**, Park RY, Cho SI, Lim SH, Lee KH, Lee W, Kang HM, Lee HS, Jung HC, Song IS. *Helicobacter pylori* infection and development of gastric cancer in Korea: Long-term follow-up. *J Clin Gastroenterol* 2008; **42**: 448-454 [PMID: [18344895](#) DOI: [10.1097/MCG.0b013e318046eac3](#)]
- 45 **Dixon MF**, Genta RM, Yardley JH, Correa P. Classification and grading of gastritis. The updated Sydney System. International Workshop on the Histopathology of Gastritis, Houston 1994. *Am J Surg Pathol* 1996; **20**: 1161-1181 [PMID: [8827022](#) DOI: [10.1097/00000478-199610000-00001](#)]
- 46 **Carrilho C**, Modcoicar P, Cunha L, Ismail M, Guisseve A, Lorenzoni C, Fernandes F, Peleteiro B, Almeida R, Figueiredo C, David L, Lunet N. Prevalence of *Helicobacter pylori* infection, chronic gastritis, and intestinal metaplasia in Mozambican dyspeptic patients. *Virchows Arch* 2009; **454**: 153-160 [PMID: [19101725](#) DOI: [10.1007/s00428-008-0713-7](#)]
- 47 **Sakitani K**, Hirata Y, Watabe H, Yamada A, Sugimoto T, Yamaji Y, Yoshida H, Maeda S, Omata M, Koike K. Gastric cancer risk according to the distribution of intestinal metaplasia and neutrophil infiltration. *J Gastroenterol Hepatol* 2011; **26**: 1570-1575 [PMID: [21575058](#) DOI: [10.1111/j.1440-1746.2011.06767.x](#)]
- 48 **de Martel C**, Plummer M, van Doorn LJ, Vivas J, Lopez G, Carillo E, Peraza S, Muñoz N, Franceschi S. Comparison of polymerase chain reaction and histopathology for the detection of *Helicobacter pylori* in gastric biopsies. *Int J Cancer* 2010; **126**: 1992-1996 [PMID: [19795444](#) DOI: [10.1002/ijc.24898](#)]
- 49 **Lee JY**, Kim N. Diagnosis of *Helicobacter pylori* by invasive test: Histology. *Ann Transl Med* 2015; **3**: 10 [PMID: [25705642](#) DOI: [10.3978/j.issn.2305-5839.2014.11.03](#)]
- 50 **Nasser SC**, Slim M, Nassif JG, Nasser SM. Influence of proton pump inhibitors on gastritis diagnosis and pathologic gastric changes. *World J Gastroenterol* 2015; **21**: 4599-4606 [PMID: [25914469](#) DOI: [10.3748/wjg.v21.i15.4599](#)]
- 51 **Carrilho C**, Fontes F, Tulsidas S, Lorenzoni C, Ferro J, Brandão M, Ferro A, Lunet N. Cancer incidence in Mozambique in 2015-2016: Data from the Maputo Central Hospital Cancer Registry. *Eur J Cancer Prev* 2018 [PMID: [29939861](#) DOI: [10.1097/CEJ.0000000000000457](#)]
- 52 **Tanko MN**, Manasseh AN, Echejoh GO, Mandong BM, Malu AO, Okeke EN, Ladep N, Agaba EI. Relation between *Helicobacter pylori*, inflammatory (neutrophil) activity, chronic gastritis, gastric atrophy and intestinal metaplasia. *Niger J Clin Pract* 2008; **11**: 270-274 [PMID: [19140368](#) DOI: [10.1002/msj.20064](#)]
- 53 **Newton R**, Ziegler JL, Casabonne D, Carpenter L, Gold BD, Owens M, Beral V, Mbidde E, Parkin DM, Wabinga H, Mbulaiteye S, Jaffe H; Uganda Kaposi's Sarcoma Study Group. *Helicobacter pylori* and cancer among adults in Uganda. *Infect Agent Cancer* 2006; **1**: 5 [PMID: [17150134](#) DOI: [10.1186/1750-9378-1-5](#)]

- 54 **Graham DY.** History of *Helicobacter pylori*, duodenal ulcer, gastric ulcer and gastric cancer. *World J Gastroenterol* 2014; **20**: 5191-5204 [PMID: 24833849 DOI: 10.3748/wjg.v20.i18.5191]
- 55 **Shiotani A, Graham DY.** Pathogenesis and therapy of gastric and duodenal ulcer disease. *Med Clin North Am* 2002; **86**: 1447-1466, viii [PMID: 12510460 DOI: 10.1016/S0025-7125(02)00083-4]
- 56 **Graham DY, Asaka M.** Eradication of gastric cancer and more efficient gastric cancer surveillance in Japan: Two peas in a pod. *J Gastroenterol* 2010; **45**: 1-8 [PMID: 19714291 DOI: 10.1007/s00535-009-0117-8]
- 57 **Kuipers EJ.** *Helicobacter pylori* and the risk and management of associated diseases: Gastritis, ulcer disease, atrophic gastritis and gastric cancer. *Aliment Pharmacol Ther* 1997; **11** Suppl 1: 71-88 [PMID: 9146793 DOI: 10.1046/j.1365-2036.11.s1.5.x]
- 58 **Fox JG, Wang TC.** Inflammation, atrophy, and gastric cancer. *J Clin Invest* 2007; **117**: 60-69 [PMID: 17200707 DOI: 10.1172/JCI30111]
- 59 **Bray F, Ferlay J, Soerjomataram I, Siegel RL, Torre LA, Jemal A.** Global cancer statistics 2018: GLOBOCAN estimates of incidence and mortality worldwide for 36 cancers in 185 countries. *CA Cancer J Clin* 2018; **68**: 394-424 [PMID: 30207593 DOI: 10.3322/caac.21492]
- 60 **Parkin DM, Ferlay J, Jemal A, Borok M, Manraj SS, N'da GG, Ogunbiyi JO, Liu B, Bray F.** Cancer in Sub-Saharan Africa. IARC Scientific Publications. 2018; 218-221
- 61 **Howson CP, Hiyama T, Wynder EL.** The decline in gastric cancer: Epidemiology of an unplanned triumph. *Epidemiol Rev* 1986; **8**: 1-27 [PMID: 3533579 DOI: 10.1093/oxfordjournals.epirev.a036288]
- 62 **Wabinga HR, Namboozee S, Amulen PM, Okello C, Mbus L, Parkin DM.** Trends in the incidence of cancer in Kampala, Uganda 1991-2010. *Int J Cancer* 2014; **135**: 432-439 [PMID: 24615279 DOI: 10.1002/ijc.28661]
- 63 **Chokunonga E, Borok MZ, Chirenje ZM, Nyakabau AM, Parkin DM.** Trends in the incidence of cancer in the black population of Harare, Zimbabwe 1991-2010. *Int J Cancer* 2013; **133**: 721-729 [PMID: 23364833 DOI: 10.1002/ijc.28063]
- 64 **Sitas F, Isaacson M.** Histologically diagnosed cancer in South Africa, 1987. *S Afr Med J* 1992; **81**: 565-568 [PMID: 1598649 DOI: 10.1002/j.1477-8696.1950.tb01211.x]
- 65 **Segal I, Ally R, Mitchell H.** *Helicobacter pylori*--an African perspective. *QJM* 2001; **94**: 561-565 [PMID: 11588215 DOI: 10.1093/qjmed/94.10.561]
- 66 **Breurec S, Michel R, Seck A, Brisse S, Côme D, Dieye FB, Garin B, Huerre M, Mbengue M, Fall C, Sgouras DN, Thiberge JM, Dia D, Raymond J.** Clinical relevance of *cagA* and *vacA* gene polymorphisms in *Helicobacter pylori* isolates from Senegalese patients. *Clin Microbiol Infect* 2012; **18**: 153-159 [PMID: 21722260 DOI: 10.1111/j.1469-0691.2011.03524.x]
- 67 **Asrat D, Nilsson I, Mengistu Y, Kassa E, Ashenafi S, Ayenew K, Wadström T, Abu-Al-Soud W.** Prevalence of *Helicobacter pylori vacA* and *cagA* genotypes in Ethiopian dyspeptic patients. *J Clin Microbiol* 2004; **42**: 2682-2684 [PMID: 15184452 DOI: 10.1128/JCM.42.6.2682-2684.2004]
- 68 **Mistry R, Berg D, Mukhopayay, Ally R, Segal I.** *Helicobacter pylori* (Hp) virulence factors vacuolating cytotoxin gene (*vacA*) genotypes and cytotoxin associated gene A (*cagA*) in adult Sowetans. *S Afr Med J* 1999; **89**: 888
- 69 **IARC Working Group on the Evaluation of Carcinogenic Risks to Humans.** Personal habits and indoor combustions. Volume 100 E. A review of human carcinogens. *IARC Monogr Eval Carcinog Risks Hum* 2012; **100**: 1-538 [PMID: 23193840]
- 70 **World Cancer Research Fund International/American Institute for Cancer Research.** Continuous Update Project Report: Diet, Nutrition, Physical Activity and Stomach Cancer 2016. Revised 2018. Available from: <https://www.wcrf.org/sites/default/files/Stomach-cancer-report.pdf>
- 71 **Correa P.** Diet modification and gastric cancer prevention. *J Natl Cancer Inst Monogr* 1992; 75-78 [PMID: 1616814 DOI: 10.1007/978-94-011-2986-2_8]
- 72 **Byers T, Guerrero N.** Epidemiologic evidence for vitamin C and vitamin E in cancer prevention. *Am J Clin Nutr* 1995; **62**: 1385S-1392S [PMID: 7495236 DOI: 10.1093/ajcn/62.6.1385S]
- 73 **Fox JG, Beck P, Dangler CA, Whary MT, Wang TC, Shi HN, Nagler-Anderson C.** Concurrent enteric helminth infection modulates inflammation and gastric immune responses and reduces *helicobacter*-induced gastric atrophy. *Nat Med* 2000; **6**: 536-542 [PMID: 10802709 DOI: 10.1038/75015]
- 74 **Graham DY.** *Helicobacter pylori* infection in the pathogenesis of duodenal ulcer and gastric cancer: A model. *Gastroenterology* 1997; **113**: 1983-1991 [PMID: 9394739 DOI: 10.1016/S0016-5085(97)70019-2]
- 75 **Aduful H, Naaeder S, Darko R, Baako B, Clegg-Lamprey J, Nkrumah K, Adu-Aryee N, Kyere M.** Upper gastrointestinal endoscopy at the korle bu teaching hospital, Accra, Ghana. *Ghana Med J* 2007; **41**: 12-16 [PMID: 17622333]
- 76 **Ayana SM, Swai B, Maro VP, Kibiki GS.** Upper gastrointestinal endoscopic findings and prevalence of *Helicobacter pylori* infection among adult patients with dyspepsia in northern Tanzania. *Tanzan J Health Res* 2014; **16**: 16-22 [PMID: 26867268 DOI: 10.4314/thrb.v16i1.3]
- 77 **Attia KA, N'dri Yoman T, Diomandé MI, Mahassadi A, Sogodogo I, Bathaix YF, Kissi H, Sermé K, Sawadogo A, Kassi LM.** [Clinical, endoscopic and histologic aspects of chronic *Helicobacter pylori* gastritis in Côte d'Ivoire: Study of 102 patients]. *Bull Soc Pathol Exot* 2001; **94**: 5-7 [PMID: 11346984]
- 78 **El-Mahdi AM, Patchett SE, Char S, Domizio P, Fedail SS, Kumar PJ.** Does *CagA* contribute to ulcer pathogenesis in a developing country, such as Sudan? *Eur J Gastroenterol Hepatol* 1998; **10**: 313-316 [PMID: 9855047 DOI: 10.1097/00042737-199804000-00007]
- 79 **Abdel-Wahab M, Attallah AM, Elshal MF, Eldousoky I, Zalata KR, el-Ghawalby NA, Gad el-Hak N, el-Ebidi G, Ezzat F.** Correlation between endoscopy, histopathology, and DNA flow cytometry in patients with gastric dyspepsia. *Hepatogastroenterology* 1996; **43**: 1313-1320 [PMID: 8908567 DOI: 10.1002/(SICI)1097-0347(199609/10)43:5<465::AID-HED11>3.0.CO;2-1]
- 80 **Campbell DI, Warren BF, Thomas JE, Figura N, Telford JL, Sullivan PB.** The African enigma: Low prevalence of gastric atrophy, high prevalence of chronic inflammation in West African adults and children. *Helicobacter* 2001; **6**: 263-267 [PMID: 11843957 DOI: 10.1046/j.1083-4389.2001.00047.x]
- 81 **Wabinga H.** *Helicobacter pylori* and histopathological changes of gastric mucosa in Uganda population with varying prevalence of stomach cancer. *Afr Health Sci* 2005; **5**: 234-237 [PMID: 16245994]
- 82 **Kalebi A, Rana F, Mwanda W, Lule G, Hale M.** Histopathological profile of gastritis in adult patients seen at a referral hospital in Kenya. *World J Gastroenterol* 2007; **13**: 4117-4121 [PMID: 17696233 DOI: 10.3748/wjg.v13.i30.4117]
- 83 **Ndububa DA, Agbakwuru EA, Olasode BJ, Aladegbaiye AO, Adekanle O, Arigbabu AO.** Correlation between endoscopic suspicion of gastric cancer and histology in Nigerian patients with dyspepsia. *Trop Gastroenterol* 2007; **28**: 69-71 [PMID: 18050843]

- 84 **Badmos KB**, Ojo OS, Olasode OS, Arigbabu AO. Gastroduodenitis and Helicobacter pylori in Nigerians: Histopathological assessment of endoscopic biopsies. *Niger Postgrad Med J* 2009; **16**: 264-267 [PMID: [20037622](#)]
- 85 **Jmaa R**, Aissaoui B, Golli L, Jmaa A, Al QJ, Ben SA, Ziadi S, Ajmi S. [The particularity of Helicobacter pylori chronic gastritis in the west center of Tunisia]. *Tunis Med* 2010; **88**: 147-151 [PMID: [20415185](#)]
- 86 **Badmos KB**, Olokoba AB, Ibrahim OO, Abubakar-Akanbi SK. Histomorphology of Helicobacter pylori-associated chronic gastritis in Ilorin. *Afr J Med Med Sci* 2010; **39**: 37-40 [PMID: [20632670](#) DOI: [10.1111/j.1556-4029.2009.00999.x](#)]
- 87 **Almouradi T**, Hiatt T, Attar B. Gastric Intestinal Metaplasia in an Underserved Population in the USA: Prevalence, Epidemiologic and Clinical Features. *Gastroenterol Res Pract* 2013; **2013**: 856256 [PMID: [24235966](#) DOI: [10.1155/2013/856256](#)]
- 88 **Eriksson NK**, Kärkkäinen PA, Färkkilä MA, Arkkila PE. Prevalence and distribution of gastric intestinal metaplasia and its subtypes. *Dig Liver Dis* 2008; **40**: 355-360 [PMID: [18291729](#) DOI: [10.1016/j.dld.2007.12.012](#)]
- 89 **Borch K**, Jönsson KA, Petersson F, Redéen S, Mårdh S, Franzén LE. Prevalence of gastroduodenitis and Helicobacter pylori infection in a general population sample: Relations to symptomatology and life-style. *Dig Dis Sci* 2000; **45**: 1322-1329 [PMID: [10961710](#) DOI: [10.1023/A:1005547802121](#)]
- 90 **Kim HJ**, Choi BY, Byun TJ, Eun CS, Song KS, Kim YS, Han DS. [The prevalence of atrophic gastritis and intestinal metaplasia according to gender, age and Helicobacter pylori infection in a rural population]. *J Prev Med Public Health* 2008; **41**: 373-379 [PMID: [19037166](#) DOI: [10.3961/jpmph.2008.41.6.373](#)]
- 91 **Zou D**, He J, Ma X, Liu W, Chen J, Shi X, Ye P, Gong Y, Zhao Y, Wang R, Yan X, Man X, Gao L, Dent J, Sung J, Wernersson B, Johansson S, Li Z. Helicobacter pylori infection and gastritis: The Systematic Investigation of gastrointestinal diseases in China (SILC). *J Gastroenterol Hepatol* 2011; **26**: 908-915 [PMID: [21198827](#) DOI: [10.1111/j.1440-1746.2010.06608.x](#)]



Published By Baishideng Publishing Group Inc
7041 Koll Center Parkway, Suite 160, Pleasanton, CA 94566, USA
Telephone: +1-925-2238242
Fax: +1-925-2238243
E-mail: bpgoffice@wjgnet.com
Help Desk: <http://www.f6publishing.com/helpdesk>
<http://www.wjgnet.com>

