

World Journal of *Clinical Cases*

World J Clin Cases 2019 October 6; 7(19): 2916-3167



**REVIEW**

- 2916** DNA methylation detection methods used in colorectal cancer
Zhan YX, Luo GH

ORIGINAL ARTICLE**Case Control Study**

- 2930** Expression and predictive value of miR-489 and miR-21 in melanoma metastasis
Mo H, Guan J, Yuan ZC, Lin X, Wu ZJ, Liu B, He JL

Observational Study

- 2942** Association of stiff-person syndrome with autoimmune endocrine diseases
Lee YY, Chen IW, Chen ST, Wang CC
- 2953** Hyperthyroid heart disease in pregnancy: Retrospective analysis of a case series and review of the literature
Shan D, Bai Y, Chen QH, Wu YX, Chen Q, Hu YY
- 2963** Changes of serum inflammatory factors and miR-145 expression in patients with osteoarthritis before and after treatment and their clinical value
Wang XZ, Li WX

Prospective Study

- 2976** Immediate muscle strengthening by an end-effector type gait robot with reduced real-time use of leg muscles: A case series and review of literature
Hwang CH

Randomized Clinical Trial

- 2986** Comparison of perceived pain and patients' satisfaction with traditional local anesthesia and single tooth anesthesia: A randomized clinical trial
Al-Obaida MI, Haider M, Hashim R, AlGheriri W, Celur SL, Al-Saleh SA, Al-Madi EM

SYSTEMATIC REVIEW

- 2995** Treatment of laryngopharyngeal reflux disease: A systematic review
Lechien JR, Mouawad F, Barillari MR, Nacci A, Khoddami SM, Enver N, Raghunandhan SK, Calvo-Henriquez C, Eun YG, Saussez S

CASE REPORT

- 3012** Keratoconus in a patient with Alport syndrome: A case report
Moshirfar M, Skanchy DF, Gomez AT, Ronquillo YC, Buckner B, Hoopes PC

- 3018** Successful multidisciplinary clinical approach and molecular characterization by whole transcriptome sequencing of a cardiac myxofibrosarcoma: A case report
Saponara M, Indio V, Pizzi C, Serban ED, Urbini M, Astolfi A, Paolisso P, Suarez SM, Nannini M, Pacini D, Agostini V, Leone O, Ambrosini V, Tarantino G, Fanti S, Niro F, Buia F, Attinà D, Pantaleo MA
- 3027** Laparoscopic hysterectomy as optimal approach for 5400 grams uterus with associated polycythemia: A case report
Macciò A, Chiappe G, Lavra F, Sanna E, Nieddu R, Madeddu C
- 3033** Malignant sweat gland tumor of breast arising in pre-existing benign tumor: A case report
An JK, Woo JJ, Hong YO
- 3039** Bronchobiliary fistula after ramucirumab treatment for advanced gastric cancer: A case report
Kim HB, Na YS, Lee HJ, Park SG
- 3047** Severe heterotopic ossification in a seronegative spondyloarthritis patient after cervical Bryan disc arthroplasty: A case report
Huang CW, Tang CL, Pan HC, Tzeng CY, Tsou HK
- 3055** Underlying IgM heavy chain amyloidosis in treatment-refractory IgA nephropathy: A case report
Wu HT, Wen YB, Ye W, Liu BY, Shen KN, Gao RT, Li MX
- 3062** Diagnosis of myocardial infarction with nonobstructive coronary arteries in a young man in the setting of acute myocardial infarction after endoscopic retrograde cholangiopancreatography: A case report
Li D, Li Y, Wang X, Wu Y, Cui XY, Hu JQ, Li B, Lin Q
- 3069** Hemophagocytic lymphohistiocytosis complicated by polyserositis: A case report
Zhu P, Ye Q, Li TH, Han T, Wang FM
- 3074** Hair regrowth following fecal microbiota transplantation in an elderly patient with alopecia areata: A case report and review of the literature
Xie WR, Yang XY, Xia HHX, Wu LH, He XX
- 3082** How should congenital absence of cruciate ligaments be treated? A case report and literature review
Lu R, Zhu DP, Chen N, Sun H, Li ZH, Cao XW
- 3090** Kaposi's sarcoma manifested as lower gastrointestinal bleeding in a HIV/HBV-co-infected liver cirrhosis patient: A case report
Zhou QH, Guo YZ, Dai XH, Zhu B
- 3098** Primary renal synovial sarcoma: A case report
Cai HJ, Cao N, Wang W, Kong FL, Sun XX, Huang B
- 3104** Type I neurofibromatosis with spindle cell sarcoma: A case report
Zhang Y, Chao JJ, Liu XF, Qin SK

- 3111** Primary hypoparathyroidism accompanied by rhabdomyolysis induced by infection: A case report
Ding LN, Wang Y, Tian J, Ye LF, Chen S, Wu SM, Shang WB
- 3120** Effects of combined rTMS and visual feedback on the rehabilitation of supernumerary phantom limbs in a patient with spinal cord injury: A case report
Lu YS, Tong P, Guo TC, Ding XH, Zhang S, Zhang XJ
- 3126** Clear cell sarcoma of soft tissue in pleural cavity: A case report
Chen YT, Yang Z, Li H, Ni CH
- 3132** Primary hyperparathyroidism in a woman with multiple tumors: A case report
Hui CC, Zhang X, Sun JR, Deng DT
- 3138** Gastric adenocarcinoma mimicking a submucosal tumor: A case report
Cheng XL, Liu H
- 3145** Hypereosinophilia, mastectomy, and nephrotic syndrome in a male patient: A case report
Wu J, Li P, Chen Y, Yang XH, Lei MY, Zhao L
- 3153** Flapless immediate implant placement into fresh molar extraction socket using platelet-rich fibrin: A case report
Sun XL, Mudalal M, Qi ML, Sun Y, Du LY, Wang ZQ, Zhou YM
- 3160** Advanced primary amelanotic malignant melanoma of the esophagus: A case report
Zhang RX, Li YY, Liu CJ, Wang WN, Cao Y, Bai YH, Zhang TJ

ABOUT COVER

Editorial Board Member of *World Journal of Clinical Cases*, Enver Zerem, MD, PhD, Professor, Department of Medical Science, Academy of Sciences and Arts of Bosnia and Herzegovina, University Clinical Centre Tuzla, Tuzla 75000, Bosnia and Herzegovina

AIMS AND SCOPE

The primary aim of *World Journal of Clinical Cases* (*WJCC*, *World J Clin Cases*) is to provide scholars and readers from various fields of clinical medicine with a platform to publish high-quality clinical research articles and communicate their research findings online.

WJCC mainly publishes case reports, case series, and articles reporting research results and findings obtained in the field of clinical medicine and covering a wide range of topics including diagnostic, therapeutic, and preventive modalities.

INDEXING/ABSTRACTING

The *WJCC* is now indexed in PubMed, PubMed Central, Science Citation Index Expanded (also known as SciSearch®), and Journal Citation Reports/Science Edition. The 2019 Edition of Journal Citation Reports cites the 2018 impact factor for *WJCC* as 1.153 (5-year impact factor: N/A), ranking *WJCC* as 99 among 160 journals in Medicine, General and Internal (quartile in category Q3).

RESPONSIBLE EDITORS FOR THIS ISSUE

Responsible Electronic Editor: *Yan-Xia Xing*

Proofing Production Department Director: *Xiang Li*

NAME OF JOURNAL

World Journal of Clinical Cases

ISSN

ISSN 2307-8960 (online)

LAUNCH DATE

April 16, 2013

FREQUENCY

Semimonthly

EDITORS-IN-CHIEF

Dennis A Bloomfield, Bao-Gan Peng, Sandro Vento

EDITORIAL BOARD MEMBERS

<https://www.wjnet.com/2307-8960/editorialboard.htm>

EDITORIAL OFFICE

Jin-Lei Wang, Director

PUBLICATION DATE

October 6, 2019

COPYRIGHT

© 2019 Baishideng Publishing Group Inc

INSTRUCTIONS TO AUTHORS

<https://www.wjnet.com/bpg/gerinfo/204>

GUIDELINES FOR ETHICS DOCUMENTS

<https://www.wjnet.com/bpg/GerInfo/287>

GUIDELINES FOR NON-NATIVE SPEAKERS OF ENGLISH

<https://www.wjnet.com/bpg/gerinfo/240>

PUBLICATION MISCONDUCT

<https://www.wjnet.com/bpg/gerinfo/208>

ARTICLE PROCESSING CHARGE

<https://www.wjnet.com/bpg/gerinfo/242>

STEPS FOR SUBMITTING MANUSCRIPTS

<https://www.wjnet.com/bpg/GerInfo/239>

ONLINE SUBMISSION

<https://www.f6publishing.com>

Treatment of laryngopharyngeal reflux disease: A systematic review

Jerome R Lechien, Francois Mouawad, Maria R Barillari, Andrea Nacci, Seyyedeh Maryam Khoddami, Necati Enver, Sampath Kumar Raghunandhan, Christian Calvo-Henriquez, Young-Gyu Eun, Sven Saussez

ORCID number: Jerome R Lechien (0000-0002-0845-0845); Francois Mouawad (0000-0001-6307-2907); Maria R Barillari (0000 0002 5457 1509); Andrea Nacci (0000-0002-5921-0964); Seyyedeh Maryam Khoddami (0000-0003-0070-1643); Necati Enver (0000-0002-3161-8810); Sampath Kumar Raghunandhan (0000-0001-6964-1066); Christian Calvo-Henriquez (0000-0003-3580-0967); Young Gyu Eun (0000-0003-4081-5207); Sven Saussez (0000-0002-3655-1854).

Author contributions: Lechien JR, Mouawad F, Saussez S, Eun Y substantial contributed to the conception or design of the work; made the acquisition, analysis, or interpretation of data for the work; drafted the work; made final approval of the version to be published; agreement to be accountable for all aspects of the work in ensuring that questions related to the accuracy or integrity of any part of the work are appropriately investigated and resolved. Barillari M and Calvo-Henriquez C substantial contributed to the conception or design of the work; made the acquisition (systematic review performing); made the interpretation of data; agreed to be accountable for all aspects of the work in ensuring that questions related to the accuracy or integrity of any part of the work are appropriately investigated and resolved. Khoddami SM, Raghunandhan SK, Enver N, Nacci A made the interpretation of data, discussion improvement, agreement to be accountable for all aspects of the work in ensuring that questions related to the

Jerome R Lechien, Sven Saussez, Laboratory of Anatomy and Cell Biology, Faculty of Medicine, UMONS Research Institute for Health Sciences and Technology, University of Mons, Mons 7000, Belgium

Jerome R Lechien, Francois Mouawad, Maria R Barillari, Andrea Nacci, Seyyedeh Maryam Khoddami, Necati Enver, Sampath Kumar Raghunandhan, Christian Calvo-Henriquez, Young-Gyu Eun, Sven Saussez, Laryngopharyngeal Reflux Study Group of Young-Otolaryngologists of the International Federations of Oto-rhino-laryngological Societies, Paris 75000, France

Francois Mouawad, Department of Otolaryngology-Head and Neck Surgery, CHU de Lille, Lille 59000, France

Maria R Barillari, Division of Phoniatrics and Audiology, Department of Mental and Physical Health and Preventive Medicine, University of L. Vanvitelli, Naples 80100, Italy

Andrea Nacci, ENT Audiology and Phoniatric Unit, University of Pisa, Pisa 56100, Italy

Seyyedeh Maryam Khoddami, Larynx Function and Acoustic Voice Laboratory, Department of Speech Therapy, School of Rehabilitation, Tehran 11369, Iran

Necati Enver, Department of Otolaryngology, Marmara University Pendik Training and Research Hospital, Istanbul 34722, Turkey

Sampath Kumar Raghunandhan, Department of Otolaryngology, Neurotology and Skullbase Surgery, Madras ENT Research Foundation, Tamil Nadu 60028, India

Christian Calvo-Henriquez, Department of Otorhinolaryngology and Head and Neck Surgery, Hospital Complex of Santiago de Compostela, Santiago de Compostela 15700, Spain

Young-Gyu Eun, Department of Otorhinolaryngology and Head and Neck Surgery, Kyung Hee University Medical Center, Seoul 130702, Korea

Corresponding author: Jerome R Lechien, MD, MSc, PhD, Associate Professor, Laboratory of Anatomy and Cell Biology, Faculty of Medicine, University of Mons (UMONS), Avenue du Champ de mars, 6, Mons B7000, Belgium. jerome.lechien@umons.ac.be
Telephone: +32-65-373584

Abstract

BACKGROUND

For a long time, laryngopharyngeal reflux disease (LPRD) has been treated by proton pump inhibitors (PPIs) with an uncertain success rate.

AIM

To shed light the current therapeutic strategies used for LPRD in order to analysis

accuracy or integrity of any part of the work are appropriately investigated and resolved.

Conflict-of-interest statement: The authors declare no conflicts of interest.

PRISMA 2009 Checklist statement: The authors have read the PRISMA 2009 Checklist, and the manuscript was prepared and revised according to the PRISMA 2009 Checklist.

Open-Access: This article is an open-access article which was selected by an in-house editor and fully peer-reviewed by external reviewers. It is distributed in accordance with the Creative Commons Attribution Non Commercial (CC BY-NC 4.0) license, which permits others to distribute, remix, adapt, build upon this work non-commercially, and license their derivative works on different terms, provided the original work is properly cited and the use is non-commercial. See: <http://creativecommons.org/licenses/by-nc/4.0/>

Manuscript source: Invited manuscript

Received: March 28, 2019

Peer-review started: March 28, 2019

First decision: May 31, 2019

Revised: September 5, 2019

Accepted: September 11, 2019

Article in press: September 11, 2019

Published online: October 6, 2019

P-Reviewer: Ciuman RR, Noussios GI

S-Editor: Dou Y

L-Editor: A

E-Editor: Qi LL



the rationale in the LPRD treatment.

METHODS

Three authors conducted a PubMed search to identify papers published between January 1990 and February 2019 about the treatment of LPRD. Clinical prospective or retrospective studies had to explore the impact of medical treatment(s) on the clinical presentation of suspected or confirmed LPRD. The criteria for considering studies for the review were based on the population, intervention, comparison, and outcome framework.

RESULTS

The search identified 1355 relevant papers, of which 76 studies met the inclusion criteria, accounting for 6457 patients. A total of 64 studies consisted of empirical therapeutic trials and 12 were studies where authors formally identified LPRD with pH-monitoring or multichannel intraluminal impedance-pH monitoring (MII-pH). The main therapeutic scheme consisted of once or twice daily PPIs for a duration ranged from 4 to 24 wk. The most used PPIs were omeprazole, esomeprazole, rabeprazole, lansoprazole and pantoprazole with a success rate ranging from 18% to 87%. Other composite treatments have been prescribed including PPIs, alginate, prokinetics, and H₂ Receptor antagonists.

CONCLUSION

Regarding the development of MII-pH and the identification of LPRD subtypes (acid, nonacid, mixed), future studies are needed to improve the LPRD treatment considering all subtypes of reflux.

Key words: Laryngopharyngeal; Reflux; Laryngitis; Treatment; Proton pump inhibitors

©The Author(s) 2019. Published by Baishideng Publishing Group Inc. All rights reserved.

Core tip: The treatment of laryngopharyngeal reflux disease (LPRD) has not changed since three decades and it is based on proton pump inhibitors (PPIs). However, the superiority of PPIs over placebo is still controversial and there are a significant number of non-responder patients to treatment. The development of multichannel intraluminal pH impedance monitoring led to the identification of subtypes of LPRD including acid, nonacid and mixed LPRD. The treatment of each subtype could be different in order to have better response rate.

Citation: Lechien JR, Mouawad F, Barillari MR, Nacci A, Khoddami SM, Enver N, Raghunandhan SK, Calvo-Henriquez C, Eun YG, Saussez S. Treatment of laryngopharyngeal reflux disease: A systematic review. *World J Clin Cases* 2019; 7(19): 2995-3011

URL: <https://www.wjnet.com/2307-8960/full/v7/i19/2995.htm>

DOI: <https://dx.doi.org/10.12998/wjcc.v7.i19.2995>

INTRODUCTION

Laryngopharyngeal reflux disease (LPRD) is an inflammatory condition of the upper aerodigestive tract tissues related to direct and indirect effect of gastric or duodenal content reflux, which induces morphological changes in the upper aerodigestive tract^[1]. LPR-related symptoms concern approximately 4 to 10% of outpatients visiting Otolaryngology-Head and Neck Surgery Departments^[2] and up to 50% of patients in Division of Laryngology^[3]. To date, several controversies persist about the diagnostic and the therapeutic management of LPRD. Although proton pump inhibitors (PPIs) are considered as the main treatment of LPRD since many decades^[4], the superiority of PPIs over placebo is still controversial^[5]. Thus, more than 40% of patients have less or no symptom relief with an empirical therapeutic trial based on PPIs^[5,6]. The aim of this systematic review is to shed light the current therapeutic strategies used for the management of LPRD in order to analysis the rationale in the treatment of LPRD.

MATERIALS AND METHODS

The criteria for considering studies for the review were based on the population, intervention, comparison, and outcome framework^[7].

Types of studies

Clinical prospective or retrospective studies published in peer-reviewed journals were included. Studies had to explore the impact of medical treatment(s) on the clinical presentation of suspected or confirmed LPRD. Only studies published in English literature were included.

Participants, inclusion/exclusion criteria

Papers were included if they attempted rigorous diagnosis of LPRD through symptoms, exam findings, or objective testing. Patients with positive pH-monitoring or multichannel intraluminal impedance-pH monitoring (MII-pH) were considered as "LPRD patients"; those with a clinical diagnosis based on symptoms \pm findings were considered as "suspected LPRD patients". Studies focusing on patients who did not respond to treatment were not included.

Outcomes

The primary outcome was review of types and effectiveness of treatment administered to LPRD patients. The secondary outcome was based on the above to define a rational approach to the management of LPRD.

Intervention and comparison

Authors had to treat their patients with conventional medical treatment including PPIs, prokinetics, histamine H₂-receptor antagonists (H₂R), alginate, magaldrate, baclofen and other drugs that have been reported at least once as treatment of LPRD or gastroesophageal reflux disease (GERD). Diet and behavioral changes have also been considered as treatment. Studies that reported patients treated with surgery were carefully excluded. The studies had to clearly describe the therapeutic scheme, *i.e.*, drug(s), doses and potential association of drug(s) with other therapeutic approaches (speech and swallowing therapies, *etc.*).

Search strategy

Lechien JR, Barillari MR, and Calvo-Henriquez C conducted a PubMed search to identify papers published between January 1990 and February 2019. Studies were screened if they had database abstracts, available full texts or titles referring to the condition. The following keywords were used: "Laryngopharyngeal reflux"; "reflux laryngitis"; "gastroesophageal reflux"; "treatment"; and "therapeutic". These investigators provided a critical analysis of the publication's content and summarized the data of the selected papers in the publication in order to determine final article selection.

RESULTS

The search identified 1355 relevant papers, of which 76 studies met the inclusion criteria, accounting for 6457 patients. A total of 64 studies consisted of empirical therapeutic trials (Table 1)^[8-72], and 12 were studies where authors formally identified LPRD with pH-monitoring ($n = 10$) or MII-pH ($n = 2$) (Table 2)^[40,56,60,73-83].

The main therapeutic scheme consisted of once or twice daily PPIs ($n = 63$) for a duration ranged from 4 to 24 wk. The most used PPIs were omeprazole, esomeprazole, rabeprazole, lansoprazole and pantoprazole (Table 3). The efficacy of these treatments was reported in the majority of studies using different outcomes, yielding the comparison between studies difficult (Tables 1 and 2). Overall, authors reported a success rate with PPI therapy ranging from 18% to 87%. Other composite treatments have been prescribed including PPIs, alginate, prokinetics, and H₂R antagonists (Table 4).

DISCUSSION

LPRD has been defined as a different entity other than GERD in the end of the nineties^[84]. Since then, the number of clinical studies dedicated to the treatment of LPRD have progressively increased^[1]. This review has shown that the most preferred treatment for LPRD is still the administration of once or twice daily PPIs. This therapeutic approach is however associated with an uncertain success rate and,

Table 1 Empirical therapeutic trials

Ref.	Design	EL	Characteristics	Outcomes	Treatment
Hanson <i>et al</i> ^[8] , 1995	Pros Uncontr	IIIb	Suspected LPR (<i>n</i> = 141)	Symptom and sign resolution: 51%	4 wk omeprazole (20 mg, 1/d) and diet
Jaspersen <i>et al</i> ^[9] , 1996	Pros Uncontr	IIIb	Suspected LPR (<i>n</i> = 21)	Laryngeal sign improvement: 100%	4 wk omeprazole (40 mg, 1/d)
Shaw <i>et al</i> ^[10] , 1997	Pros Uncontr	IIIb	Suspected LPR (<i>n</i> = 96)	Pre to post-score improvement: +	12 wk omeprazole (20 mg/d)
Wo <i>et al</i> ^[11] , 1997	Pros Uncontr	IIIb	Suspected LPR (<i>n</i> = 21)	Pre to post-score improvement: +	8 wk omeprazole (40 mg, 1/d) and diet
Metz <i>et al</i> ^[12] , 1997	Pros Uncontr	IIIb	Suspected LPR (<i>n</i> = 10)	Symptom and sign resolution: 60%	4 wk omeprazole (20 mg/d)
Habermann <i>et al</i> ^[13] , 1999	Pros Uncontr	IIIb	Suspected LPR (<i>n</i> = 29)	Pre to post-score improvement: +	6 wk pantoprazole (40 mg/d)
Havas <i>et al</i> ^[14] , 1999	Placebo RCT	Ib	Gr1: suspected LPR (<i>n</i> = 7) Gr2: suspected LPR (<i>n</i> = 8)	Pre to post-score improvement: +	Gr1-2: 12 wk placebo/lansoprazole (30 mg 2/d) and Diet
El-Serag <i>et al</i> ^[15] , 2001	Placebo RCT	Ib	Gr1: suspected LPR (<i>n</i> = 10) Gr2: suspected LPR (<i>n</i> = 10)	54% of symptom resolution	Gr1-2: 12 wk placebo/lansoprazole (30 mg 2/d)
Langevin <i>et al</i> ^[16] , 2001	Placebo RCT	Ib	Gr1: suspected LPR (<i>n</i> = 14) Gr2: suspected LPR (<i>n</i> = 16)	Pre to post-score improvement	Gr1-2: 12 wk placebo/omeprazole (40 mg/d)
Hamdan <i>et al</i> ^[17] , 2001	Pros Uncontr	IIIb	Suspected LPR (<i>n</i> = 22)	Pre to post-score improvement: +	4 wk pantoprazole (40 mg, 2/d), cisapride (20 mg, 2/d) and diet
Rodríguez-Téllez <i>et al</i> ^[18] , 2002	Pros Uncontr	IIIb	Suspected LPR (<i>n</i> = 21)	Pre to post-score improvement: +	12 wk omeprazole (20 mg, 2/d)
Habermann <i>et al</i> ^[19] , 2002	Pros Uncontr	IIIb	Suspected LPR (<i>n</i> = 24)	Pre to post-score improvement: +	6 wk pantoprazole (40 mg/d)
DelGaudio <i>et al</i> ^[20] , 2003	Pros Uncontr	IIIb	Gr1: LPR responder (<i>n</i> = 19)	50% symptom improvement: 63%	8 wk esomeprazole (40 mg 1/d) and diet
Bilgen <i>et al</i> ^[21] , 2003	Pros Contr	IIIb	Gr1: suspected LPR (<i>n</i> = 36) Gr2: CT (<i>n</i> = 23)	Improvement of ≥ 1 -point RSI and RFS: 68%	24 wk lansoprazole (30 mg, 2/d) and diet
Garrigues <i>et al</i> ^[22] , 2003	Pros Uncontr	IIIb	Suspected LPR (<i>n</i> = 91)	Symptom improvement/resolution: 86-41% Laryngoscopic sign resolution: 83%	24 w omeprazole (20 mg, 2/d)
Beaver <i>et al</i> ^[23] , 2003	Pros Uncontr	IIIb	Suspected LPR (<i>n</i> = 49)	Pre to post-LPR sign score improvement: + ¹	6 wk lansoprazole (30 mg, 2/d) or pantoprazole (40 mg, 2/d) or Omeprazole/Rabeprazole (20 mg, 2/d)
Siupsinskiene <i>et al</i> ^[24] , 2003	Pros Contr	IIb	Gr1: suspected LPR (<i>n</i> = 113) Gr2: healthy (<i>n</i> = 113)	Symptom improvement of Gr1: 65%	Gr1-2: 5 wk omeprazole (20 mg, 1-2/d) and diet
Williams <i>et al</i> ^[25] , 2004	Pros Uncontr	IIIb	Suspected LPR (<i>n</i> = 20)	Improvement of ≥ 1 -point level LGS: 63% Improvement of symptom score: 40%-45%	12 wk omeprazole (20 mg, 3/d) and diet
Issing <i>et al</i> ^[26] , 2004	Pros Uncontr	IIIb	Suspected LPR (<i>n</i> = 22)	Improvement of symptom score: +	8 wk esomeprazole (20 mg, 2/d)
Sereg-Bahar <i>et al</i> ^[27] , 2005	Pros Uncontr	IIIb	Suspected LPR (<i>n</i> = 43)	Pre to post-RFS improvement: + ¹	8 wk esomeprazole (40 mg/d) and diet
Park <i>et al</i> ^[28] , 2005	Pros Contr	IIb	Gr1: suspected LPR (<i>n</i> = 30)	Symptom improvement (Gr1-2): 68%-46%	Gr1: 16 wk lansoprazole (30 mg, 2/d) and diet

			Gr2: suspected (<i>n</i> = 30)	Sign improvement (Gr1-2): 50%-18%	Gr2: Omeprazole (20 mg, 2/d) and ranitidine (300 mg/d) and diet
			Gr3: suspected (<i>n</i> = 25)		Gr3: esomeprazole (40 mg, 1/d) and diet
Vaezi <i>et al</i> ^[29] , 2006	Placebo RCT	Ib	Gr1: suspected LPR (<i>n</i> = 95)	Symptom resolution: 15%	Gr1-2: 16 wk placebo/esomeprazole (40 mg, 2/d)
			Gr2: suspected LPR (<i>n</i> = 50)		
Dore <i>et al</i> ^[30] , 2007	Pros Uncontr	IIIb	Suspected LPR (<i>n</i> = 266)	Symptom improvement/resolution: 68%-12%	12 wk rabeprazole/pantoprazole (20 mg, 2/d), and diet or esomeprazole (20 mg, 2/d) or lansoprazole (30 mg, 2/d),
Qua <i>et al</i> ^[31] , 2007	Pros Contr	IIIb	Suspected LPR (<i>n</i> = 32)	Gr1-2: Symptom improvement: 67%-18%	8 wk lansoprazole (30 mg, 2/d)
			Gr1: GERD (<i>n</i> = 21)	Gr1-2: LGS improvement: 86%-36%	
			Gr2: non-GERD (<i>n</i> = 11)		
Oridate <i>et al</i> ^[32] , 2008	Pros Uncontr	IIIb	Suspected LPR (<i>n</i> = 52)	> 50% improvement of RSI and GERD: 50%-78%	9 wk rabeprazole (20 mg/d)
				Pre to post-improvement of DLS: +	
Reichel <i>et al</i> ^[33] , 2008	Placebo RCT	Ib	Gr1: suspected LPR (<i>n</i> = 30)	RSI improvement: 78%	Gr1-2: 12 wk placebo/esomeprazole (20 mg, 2/d)
			Gr2: suspected LPR (<i>n</i> = 28)		
McGlashan <i>et al</i> ^[34] , 2009	Placebo RCT	Ib	Gr1: suspected LPR (<i>n</i> = 24)	Pre to post-RSI improvement	Gr1-2: 24 wk placebo/gaviscon (4/d) and diet
			Gr2: suspected LPR (<i>n</i> = 25)		
Vashani <i>et al</i> ^[35] , 2010	Placebo RCT	Ib	Gr1: suspected LPR (<i>n</i> = 16)	Pre to post-RSI improvement: +	Gr1: 6 wk voice therapy + Omeprazole (20 mg, 2/d)
			Gr2: suspected LPR (<i>n</i> = 16)		Gr 2: Placebo (2/d)
Fass <i>et al</i> ^[36] , 2010	Placebo RCT	Ib	Gr1: suspected LPR (<i>n</i> = 24)	Pre to post-symptom improvement: +	Gr1-2: 12 wk placebo/esomeprazole (20 mg, 2/d) and diet
			Gr1: suspected LPR (<i>n</i> = 17)	Pre to post-RFS improvement: -	
Lam <i>et al</i> ^[37] , 2010	Placebo RCT	Ib	Gr1: suspected LPR (<i>n</i> = 42)	Pre to post-RSI and RFS improvement: +	Gr1-2: 18 wk placebo/rabeprazole (20 mg, 2/d) and diet
			Gr2: suspected LPR (<i>n</i> = 40)		
Ezzat <i>et al</i> ^[38] , 2011	Placebo RCT	Ib	Gr1: suspected LPR (<i>n</i> = 42)	RFS improvement (Gr1-2): 48%-20%	Gr1-2: 8 wk pantoprazole (40 mg/d) and itopride (50 mg, 3/d)
			Gr2: suspected LPR (<i>n</i> = 45)	Pre to post-symptom improvement: +	/Pantoprazole and placebo and diet
Chiba <i>et al</i> ^[39] , 2011	Pros Uncontr	IIIb	Suspected LPR (<i>n</i> = 27)	Pre to post-GERD Score improvement: +	8 wk lansoprazole (30 mg/d) or rabeprazole (10 mg/d)
Friedman <i>et al</i> ^[40] , 2011	Retrospective	IV	Gr1: LPR (<i>n</i> = 73)	Improvement of main complaint Gr1-2: 49%-41%	24 wk PPI (20 or 40 mg, 2/d)
			Gr2: suspected LPR (<i>n</i> = 70)	Resolution of main complaint Gr 1-2: 14%-3%	
Lee <i>et al</i> ^[41] , 2011	Pros Uncontr	IIIb	Suspected LPR (<i>n</i> = 455)	Reduction of > 50% of RSI: 75%	12 wk rabeprazole (10/20 mg/d) and diet
Masaany <i>et al</i> ^[42] , 2011	Pros Uncontr	IIIb	Suspected LPR (<i>n</i> = 47)	Reduction of ≥ 10-point of RSI: 79%	16 wk pantoprazole (40 mg, 2/d)
Naiboglu <i>et al</i> ^[43] , 2011	Pros Uncontr	IIIb	Suspected LPR (<i>n</i> = 50)	Pre to post-RSI and RFS improvement: +	12 wk lansoprazole (30 mg/d) and diet

Patigaroo <i>et al</i> ^[44] , 2011	Pros Uncontr	IIIb	Suspected LPR (<i>n</i> = 50)	Pre to post-RSI and RFS improvement: +	16 wk esomeprazole (20 mg, 2/d)/ pantoprazole (40 mg/d) Lansoprazole (30 mg, 2/d)
Habermann <i>et al</i> ^[45] , 2012	Pros Uncontr	IIIb	Suspected LPR (<i>n</i> = 1044)	Pre to post-RSI and RFS improvement: +	12 wk pantoprazole (20 or 40 mg, 2/d)
Park <i>et al</i> ^[46] , 2012	Pros Contro	IIIb	Gr1: suspected LPR (<i>n</i> = 50) Gr2: suspected LPR (<i>n</i> = 50)	Reduction of ≥ 5-point of RSI Gr1-2:46-68% Reduction of ≥ 3-point of RFS Gr1-2:18-50%	Gr1: 12 wk omeprazole (20 mg, 2/d) Gr2: Omeprazole + voice therapy
Becker <i>et al</i> ^[47] , 2012	Pros Uncontr	IIIb	Suspected LPR (<i>n</i> = 30)	Reduction of RSI: 20%	12 wk pantoprazole (40 mg, 2/d)
Hunchaisri <i>et al</i> ^[48] , 2012	Pros Contro	IIb	Gr1: suspected LPR (<i>n</i> = 32) Gr2: suspected LPR (<i>n</i> = 33)	RSI reduction: 73% > 50% of RSI reduction: 67%	Gr1: 12 wk domperidone (10mg, 3/d) and omeprazole (20 mg, 2/d) and diet Gr2: Omeprazole (20 mg, 2/d) and diet
Chung <i>et al</i> ^[49] , 2012	Pros Contro	IIb	Gr1: suspected LPR (<i>n</i> = 22) Gr2: suspected LPR (<i>n</i> = 20)	Pre to post-RSI and RFS improvement: +	Gr1: 8 wk Lanzoprazole (30 mg/d) Gr2: Lanzoprazole + SGB
Oridate <i>et al</i> ^[50] , 2012	Pros Contro	IIb	Gr1: suspected LPR (<i>n</i> = 60) Gr2: suspected LPR (N=13)	Pre to post-RFS improvement: -	Gr 1: 4 wk rabeprazole (10 mg/d) Gr 2: No treatment
Chun <i>et al</i> ^[51] , 2013	Pros Contro	IIb	Gr1: suspected LPR (<i>n</i> = 32) Gr2: suspected LPR (<i>n</i> = 29)	Pre to post-RSI and RFS improvement: +	Gr1: 12 wk lanzoprazole (30 mg/d) Gr2: Lanzoprazole and itopride (50 mg 3/d)
Beech <i>et al</i> ^[52] , 2013	Pros Uncontr	IIIb	Suspected LPR (<i>n</i> = 74)	Reduction of ≥ 1-point of RSI: 71% Improvement of pre to post-VSS: +	24 wk lansoprazole (30 mg 2/d) and diet
Vailati <i>et al</i> ^[53] , 2013	Pros Uncontr	IIIb	Suspected LPR (<i>n</i> = 22)	Reduction of ≥1-point of RSI: 59%	12 wk pantoprazole (40 mg, 2/d)
Lee <i>et al</i> ^[54] , 2014	Pros Uncontr	IIIb	Suspected LPR (<i>n</i> = 180)	Pre to post-RSI and RFS improvement: +	12 wk lansoprazole (15 mg, 2/d) and diet
Chappity <i>et al</i> ^[55] , 2014	RCT	IIb	Gr1: suspected LPR (<i>n</i> = 117) Gr2: suspected LPR (<i>n</i> = 117)	Pre to post-score improvement: + Gr2: Diet	Gr1: 12 wk omeprazole (20 mg, 2/d) and diet
Wan <i>et al</i> ^[56] , 2014	Pros Contro	IIb	Gr1: suspected LPR (<i>n</i> = 35) Gr2: LPR (<i>n</i> = 23)	Pre to post-RSI and RFS improvement: +	4 wk esomeprazole (20 mg, 2/d) and diet
Semmanaselvan <i>et al</i> ^[57] , 2015	Pros Uncontr	IIIb	Suspected LPR (<i>n</i> = 50)	Reduction of ≥ 1-point of RSI/RFS: 87%-98%	12 wk rabeprazole (20 mg/d) and domperidone (30 mg/d)
Ozturan <i>et al</i> ^[58] , 2016	Pros Contro	IIb	Gr1: suspected LPR (<i>n</i> = 65) Gr2: Control (<i>n</i> = 35)	Pre to post-RSI and RFS improvement: +	8 wk esomeprazole, (20 mg, 2/d) and diet
Gupta <i>et al</i> ^[59] , 2016	Retrospective	IV	Suspected LPR (<i>n</i> = 188)	Pre to post-RSI and RFS improvement: +	10 wk PPIs (2/d)
Nennstiel <i>et al</i> ^[60] , 2016	Retrospective Cross-sectional	IV	Gr1: LPR (<i>n</i> = 21) Gr2: suspected LPR (<i>n</i> = 24)	Symptom VAS improvement: 60%	12 wk pantoprazole (40 mg, 2/d) and diet
Batoglu-Karaaltin <i>et al</i> ^[61] , 2016	Pros Uncontr	IIIb	Suspected LPR (<i>n</i> = 84)	Reduction of ≥ 1-point of RSI/RFS: 21%-56%	12 wk lansoprazole (30 mg, 2/d)
Dulery <i>et al</i> ^[62] , 2016	Pros Uncontr	IIIb	Suspected LPR (<i>n</i> = 24)	Symptom resolution: 10%	8 wk esomeprazole (40 mg, 2/d)
Joshi <i>et al</i> ^[63] , 2017	Pros Uncontr	IIIb	Suspected LPR (<i>n</i> = 100)	Pre to post-RSI and RFS improvement: +	24 wk omeprazole (20 mg, 2/d) and diet
Pullarat <i>et al</i> ^[64] , 2017	Pros Uncontr	IIIb	Suspected LPR (<i>n</i> = 30)	Pre to post-RSI and RFS improvement: +	8 wk pantoprazole (40 mg/d)

Zalvan <i>et al</i> ^[65] , 2017	Retrospective	IV	Gr1: suspected LPR (<i>n</i> = 85) Gr2: suspected LPR (<i>n</i> = 99)	Reduction of ≥ 6 -points of RSI Gr1-2: 54-63%	Gr1: 6 wk PPI (1 or 2/d) and diet Gr2: Diet
Carroll <i>et al</i> ^[66] , 2017	Retrospective	IV	Suspected LPR (<i>n</i> = 97)	RSI < 13: 49%	12 wk omeprazole (40 mg/d) and ranitidine (300 mg/d)
Lechien <i>et al</i> ^[67] , 2018	Pros Uncontr	IIIb	Suspected LPR (<i>n</i> = 80)	Post-therapy RSI < 13 and RFS < 7: 74%	12 wk pantoprazole (20 mg, 2/d) and diet
Mozzanica <i>et al</i> ^[68] , 2018	Pros Uncontr	IIIb	Suspected LPR (<i>n</i> = 34)	Pre to post-RSI, RFS, VoiSS improvement: +	8 wk omeprazole (20 mg, 2/d) and diet
Wilkie <i>et al</i> ^[69] , 2018	Pros Contro	IIb	Gr1: suspected LPR (<i>n</i> = 39) Gr2: suspected LPR (<i>n</i> = 33)	Reduction of RSI: 94% Pre to post-RSI improvement: -	Gr1: 12 wk gaviscon advance (4/d) and diet Gr2: Gaviscon (4/d) and PPI (NA) and diet
Yang <i>et al</i> ^[70] , 2018	Retrospective	IV	Suspected LPR (<i>n</i> = 105)	Reduction of ≥ 1 -point of RSI: 91%	8 wk PPI (40 mg/d) \pm H2 blocker (300 mg/d) and diet
Kirti <i>et al</i> ^[71] , 2018	Pros Uncontr	IIIb	Suspected LPR (<i>n</i> = 80)	Unblinded RFS < 7: 95%	8 wk PPI (2/d) and diet
Suzuki <i>et al</i> ^[72] , 2019	Pros Contro	IIb	Gr1: suspected LPR (<i>n</i> = 20) Gr2: suspected LPR (<i>n</i> = 20)	Pre to post-RSI, RFS improvement: +	Gr1: 8 wk esomeprazole (20 mg/d) Gr2: 8 wk famotidine (20 mg/d)

¹No statistical analysis. CT: Control; DLS: Dysmotility-like symptoms; GERD: Gastroesophageal reflux disease; GI: Gastrointestinal; Gr: Group; LGS: Laryngitis grading system; LPR: Laryngopharyngeal reflux; PPI: Proton pump inhibitor; Pros Contr: Prospective controlled study; Pros Uncontr: Prospective uncontrolled study; RCT: Randomized controlled trial; RFS: Reflux finding score; RSI: Reflux symptom index; VAS: Visual analog scale; VoiSS: Voice symptom scale; VSS: Voice subjective score.

depending of the therapeutic outcomes used, a significant number of patients are found to be resistant to treatment. According to a recent systematic review, the non-response rate would be close to 40% of patients^[85]. The critical analysis of the different therapeutic schemes and their related success rate has to consider the respective pharmacological properties of the drugs used.

PPIs

PPI decreases the H⁺ gastric secretion by covalent binding with H⁺/K⁺ ATPase. The inhibition of proton pump increases the pH of the gaseous refluxate droplets and limits the extracellular activity of pepsin on upper aerodigestive tract tissues^[86]. From a pathophysiological standpoint, PPIs have no impact on the intracellular activity of pepsin^[87], and a low impact on the activity of trypsin and non-conjugated bile salts, which could injure the laryngopharyngeal mucosa in a nonacid environment^[88,89]. Moreover, the PPI intake does not change the total number of daily reflux episodes^[90].

This review shows that the doses and administration frequency of PPIs varies from one to another study. PPIs have a short half-life (90 min) and an oral unique dose of 20 mg inhibits 70% of the pump enzymes^[91]. In practice, the half-life of the inhibition of gastric acid secretion lasts an estimated 24 h. Approximately 20% of proton pumps are newly synthesized over a 24-h period with greater pump synthesis at night than during the day. With regard to the 90 min blood half-life of PPI, the addition of bedtime administration will not add to inhibition of nocturnal acid breakthrough, because the drug will have disappeared by the time nighttime acid secretion is evident. Assuming that about 70% of pumps are activated by breakfast and that the PPI is given 30 to 60 min beforehand, it can be calculated that steady state inhibition on once-a-day dosing is about 66% of maximal acid output. In other words, and regarding the pharmacological properties of the drug, increasing the dose has virtually no effect once optimal dosage has been reached. However, increasing the dose frequency does have some effect; a morning dose and an evening dose before meals results in about 80% inhibition of maximal acid output^[91,92]. Thus, twice daily PPI could be better because a more complete control of both daytime and nocturnal esophageal acid exposure^[93]. In LPRD literature, only the study by Park *et al*^[28] compared once *vs* twice daily PPIs in LPRD. These authors suggested a superiority of twice daily *vs* once daily PPI(s), which seems to be in accordance with the pharmacological properties of PPIs^[28,93]. Pharmacologically, the use of twice daily 20 mg PPIs could be the most effective approach in order to inhibit the acid secretion but, as mentioned above, this approach has low effect on nonacid or weakly acid LPRD variants.

Table 2 Studies that identified LPRD with objective diagnostic tools

Ref.	Design	EL	Characteristics	Outcomes	Treatment
Noordzij <i>et al</i> ^[73] , 2001	Placebo RCT	Ib	Gr1: LPR (<i>n</i> = 15); Gr2: LPR (<i>n</i> = 15)	Pre to post-symptom improvement: +; Pre to post-sign improvement: -	Gr1-2: 8 wk placebo/omeprazole (40 mg, 2/d)
Belafsky <i>et al</i> ^[74] , 2001	Pros Uncontr	IIIb	LPR (<i>n</i> = 39)	Pre to post-RSI and RFS improvement: +	24 wk omeprazole/rabeprazole (20 mg, 2/d) or lansoprazole (30 mg, 2/d) and diet
Belafsky <i>et al</i> ^[75] , 2002	Pros Uncontr	IIIb	LPR (<i>n</i> = 25)	Pre to post-RSI improvement: +	26 wk PPIs (2/d) and diet
Eherer <i>et al</i> ^[76] , 2003	Placebo RCT	Ib	Gr1: LPR (<i>n</i> = 7); Gr2: LPR (<i>n</i> = 7)	Symptom/sign improvement: 80%-100%	Gr1-2: 12 wk placebo/pantoprazole (40 mg, 2/d)
Steward <i>et al</i> ^[77] , 2004	Placebo RCT	Ib	Gr1: LPR (<i>n</i> = 21); Gr2: LPR (<i>n</i> = 21)	Symptom improvement: 53%	Gr1-2: 8 wk placebo/rabeprazole (20 mg 2/d) and diet
Wo <i>et al</i> ^[78] , 2006	Placebo RCT	Ib	Gr1: LPR (<i>n</i> = 19); Gr2: LPR (<i>n</i> = 20)	Symptom improvement: 40%	Gr1-2: 12 wk placebo/pantoprazole (40 mg/d)
Jin <i>et al</i> ^[79] , 2008	Pros Uncontr	IIIb	LPR (<i>n</i> = 40)	Pre to post-RSI and RFS improvement: +	20 wk lansoprazole (30 mg/d) and mosapride (5 mg, 3/d) or levosulpride (25 mg, 3/d)
Friedman <i>et al</i> ^[40] , 2011	Retrospective	IV	Gr1: LPR (<i>n</i> = 73); Gr2: suspected LPR (<i>n</i> = 70)	Improvement of main complaint Gr1-2: 49%-41%; Resolution of main complaint Gr 1-2: 14%-3%	24 wk PPI (20 or 40 mg, 2/d) and diet
Lien <i>et al</i> ^[80] , 2013	Pros Contr	IIIb	Gr1: GERD and LPR (<i>n</i> = 65); Gr2: LPR (<i>n</i> = 42)	Reduction of > 50% of RSI (Gr1-2): 63%-17%	12 wk esomeprazole (40 mg, 2/d) and diet
Wan <i>et al</i> ^[56] , 2014	Pros Contr	IIb	Gr1: suspected LPR (<i>n</i> = 35); Gr2: LPR (<i>n</i> = 23)	Pre to post-RSI and RFS improvement: +	4 wk esomeprazole (20 mg, 2/d) and diet
Waxman <i>et al</i> ^[81] , 2014	Retrospective	IV	LPR (<i>n</i> = 43)	Reduction of ≥ 1-point of RSI: 67%	4 wk omeprazole (40 mg, 2/d)
Nennstiel <i>et al</i> ^[60] , 2016	Retrospective Cross-sectional	IV	Gr1: LPR (<i>n</i> = 21); Gr2: suspected LPR (<i>n</i> = 24)	Symptom VAS improvement: 60%	12 wk pantoprazole (40mg, 2/d) and diet
Tseng <i>et al</i> ^[82] , 2018	Placebo RCT	Ib	Gr1: LPR (<i>n</i> = 39); Gr2: LPR (<i>n</i> = 40)	Pre to post-RSI and RFS improvement: +	Gr1-2: 8 wk alginate/placebo and diet
Agrawal <i>et al</i> ^[83] , 2018	Pros Uncontr	IIIb	LPR (<i>n</i> = 33)	Reduction of > 50% of RSI: 45%	8-12 wk omeprazole and diet

GERD: Gastroesophageal reflux disease; Gr: Group; LPR: Laryngopharyngeal reflux; PPI: Proton pump inhibitor; Pros Contr: Prospective controlled study; PROS Uncontr: Prospective uncontrolled study; RCT: Randomized controlled trial; RFS: Reflux finding score; RSI: Reflux symptom index; VAS: Visual analog scale.

Histamine H₂R

PPIs have been associated with H₂R in four studies^[28,66,70,72]. In comparison with twice daily PPIs, the use of H₂R does not make sense regarding their short duration of action (6 to 12 h)^[94,95]. The studies comparing the efficacy of PPIs *vs* H₂R + PPIs did not report a clinical evidence of the use of H₂R in LPRD^[28,72]. Moreover, the association of once daily PPI with ranitidine at bedtime being more expensive approach than 6-mo twice daily PPIs^[66].

Prokinetics

The addition of prokinetics to PPIs is still controversial in GERD^[96], despite their role in the increase of the esophageal sphincter pressure^[94,97,98]. Six studies showed interest in the role of prokinetics for the management of LPRD^[17,38,48,51,57,79] and these authors reported mixed evidence about the superiority of PPIs and prokinetics over PPIs alone^[99]. Precisely, two RCTs suggested that the addition of prokinetics to PPI(s) would be associated with better symptom improvement^[38,51], while the study by Hunchaisri *et al*^[48] did not find similar findings. The controversy about the efficacy of

Table 3 Proton pump inhibitor therapeutic schemes used in the current literature

Drugs and duration	Study numbers
4-5 wk	
Omeprazole 40mg 1/d	1
Omeprazole 20mg 1/d	3
Omeprazole 40mg 2/d	1
Esomeprazole 20mg 2/d	2
Rabeprazole 10mg 1/d	1
6-7 wk	
Pantoprazole 40mg 2/d	1
Pantoprazole 40mg 1/d	2
Lansoprazole 30mg 2/d	1
Omeprazole 20mg 2/d	2
8-9 wk	
Omeprazole 40mg 1/d	1
Omeprazole 20mg 2/d	1
Omeprazole 40mg 2/d	1
Esomeprazole 40mg 2/d	1
Esomeprazole 40mg 1/d	2
Esomeprazole 20mg 2/d	2
Esomeprazole 20mg 1/d	1
Lansoprazole 30mg 2/d	1
Lansoprazole 30mg 1/d	2
Rabeprazole 20mg 1/d	1
Rabeprazole 20mg 2/d	1
Rabeprazole 10mg 1/d	1
Pantoprazole 40mg 1/d	2
12 wk	
Omeprazole 40mg 1/d	1
Omeprazole 20mg 3/d	1
Omeprazole 20mg 2/d	4
Omeprazole 20mg 1/d	1
Esomeprazole 20mg 2/d	3
Esomeprazole 40mg 2/d	1
Lansoprazole 30mg 2/d	4
Lansoprazole 15mg 2/d	1
Rabeprazole 20mg 2/d	1
Rabeprazole 10mg 1/d	1
Pantoprazole 20 mg 2/d	3
Pantoprazole 40 mg 1/d	1
Pantoprazole 40 mg 2/d	6
16-20 wk	
Lansoprazole 30 mg 2/d	2
Esomeprazole 40 mg 2/d	1
Esomeprazole 40 mg 1/d	1
Esomeprazole 20 mg 2/d	1
Rabeprazole 20 mg 2/d	1
Pantoprazole 40 mg 2/d	1
Pantoprazole 40 mg 1/d	1
24 wk	
Omeprazole 20 mg 2/d	2
Omeprazole 20 mg 1/d	1
Lansoprazole 30 mg 2/d	3

Table 4 Composite treatments used in the current literature

Drugs and duration	Study numbers
PPIs and antihistamines	
Omeprazole 20 mg 2/d and Ranitidine 300 mg/d (16 wk)	1
Omeprazole 40 mg/d and Ranitidine 300 mg/d (12 wk)	1
PPIs 40 mg/d and antihistamine 300 mg/d (8 wk)	1
PPIs and gastroprokinetic	
Pantoprazole 40 mg 2/d and Cisapride 20 mg 2/d (4 wk)	1
Pantoprazole 40 mg 1/d and Itopride 50 mg 3/d (8 wk)	1
Omeprazole 20 mg 2/d and Domperidone 10 mg 3/d (12 wk)	1
Lansoprazole 30 mg 1/d and Itopride 50 mg 3/d (12 wk)	1
Rabeprazole 20 mg/d and Domperidone 30 mg/d (12 wk)	1
Lansoprazole 30 mg 1/d and Mosapride 5 mg 3/d (20 wk)	1
PPIs and alginate	
PPIs (NA) and gaviscon 4/d (12 wk)	1
Aligante 3-4/d (8 wk)	1
Other	
Famotidine 20 mg 1/d (8 wk)	1
Gaviscon 4/d (24 wk)	1
Gaviscon 4/d (12 wk)	1

NA: Not available; PPIs: Proton pump inhibitors.

prokinetics in LPRD illustrates the lack of evidence in the occurrence of esophageal dysmotility disorder in this condition^[100,101].

Alginate and magaldrate

The development of MII-pH led to the identification of new subtypes of LPRD, being acid, weakly acid, mixed and nonacid LPRD. In that way, three recent studies found that the majority of patients have in fact nonacid or mixed LPRD^[102-104]. The pathophysiological mechanisms of nonacid and mixed LPRD are still unknown but they could involve the activity of trypsin, conjugated and non-conjugated bile salts in the mucosa of the upper aerodigestive tract^[1,105]. Precisely, non-conjugated bile salts and trypsin are effective in pH above 6.0 while conjugated bile salts are more effective in acid environment. Consequently, the use of alginate or magaldrate could make sense in the primary management of LPRD.

Alginates form a raft floating over gastric contents that can be maintained within the stomach for up to 4 h. Gaviscon is endowed with bio-adhesive potential, a property due primarily to its polymer chain length and ionizable groups that provides a protective biofilm on the mucosa of esophagus and, potentially, upper aerodigestive tract^[106]. Interestingly, these drugs are able to reduce the number of acid reflux events^[94,107].

In practice, McGlashan *et al*^[34] have demonstrated the superiority of alginate over placebo in the treatment of LPRD patients. More recently, Wilkie *et al*^[69] found that a treatment based on the single use of alginate is quite competitive with a treatment combining PPIs and alginate. Our recent results also support that the addition of alginate or magaldrate to PPIs seems to significantly improve symptoms in patients with mixed and nonacid LPRD^[102].

Diet and behavioral changes

Diet and behavioral changes remain the first therapeutic step of the LPRD treatment. Additionally, this approach is the best cost-effective empirical treatment for patients with mild LPRD. In practice, patients who respect diet and behavioral changes have better symptom improvement than those who did not respect diet^[108]. Furthermore, recent studies suggested that a well-conducted diet could be as efficiently as PPI treatment^[65,70]. Alkaline, protein, low-fat and low-acid diet is effective because these types of foods are well digested, also decreasing the number of transient relaxations of esophageal sphincters and thereby the related number of LPRD episodes.

Perspectives

The development of MII-pH as diagnostic tool is an important step in the

improvement of daily clinical practices related to LPRD. MII-pH studies showed that there are a large number of patients with nonacid or mixed LPRD, which are both less controlled by conventional PPI therapy. It is highly likely that a significant part of the patients who were called “resistant LPRD patients” within the three last decades, had nonacid or mixed LPRD. With regard to the properties of anti-reflux drugs, alginate is a future candidate as single drug or additional drug to PPIs in the future studies. The concomitant use of twice daily PPIs and twice or thrice daily alginate or magaldrate could provide a consistent protection against the mucosal irritation of pepsin, trypsin and bile salts. Naturally, the administration of diet and behavioral changes is still required in all patients in order to improve the treatment efficacy. According to a recent management algorithm of LPRD (Figure 1)^[1], MII-pH testing could be used as diagnostic and therapeutic control tool, providing better identification of the LPRD subtypes and better treatment. Because the compliance of LPRD patients to medical treatment and diet can be poor, the administration of a personalized treatment based on the patient MII-pH results and the lifestyle habits could improve the patient compliance to LPRD treatment.

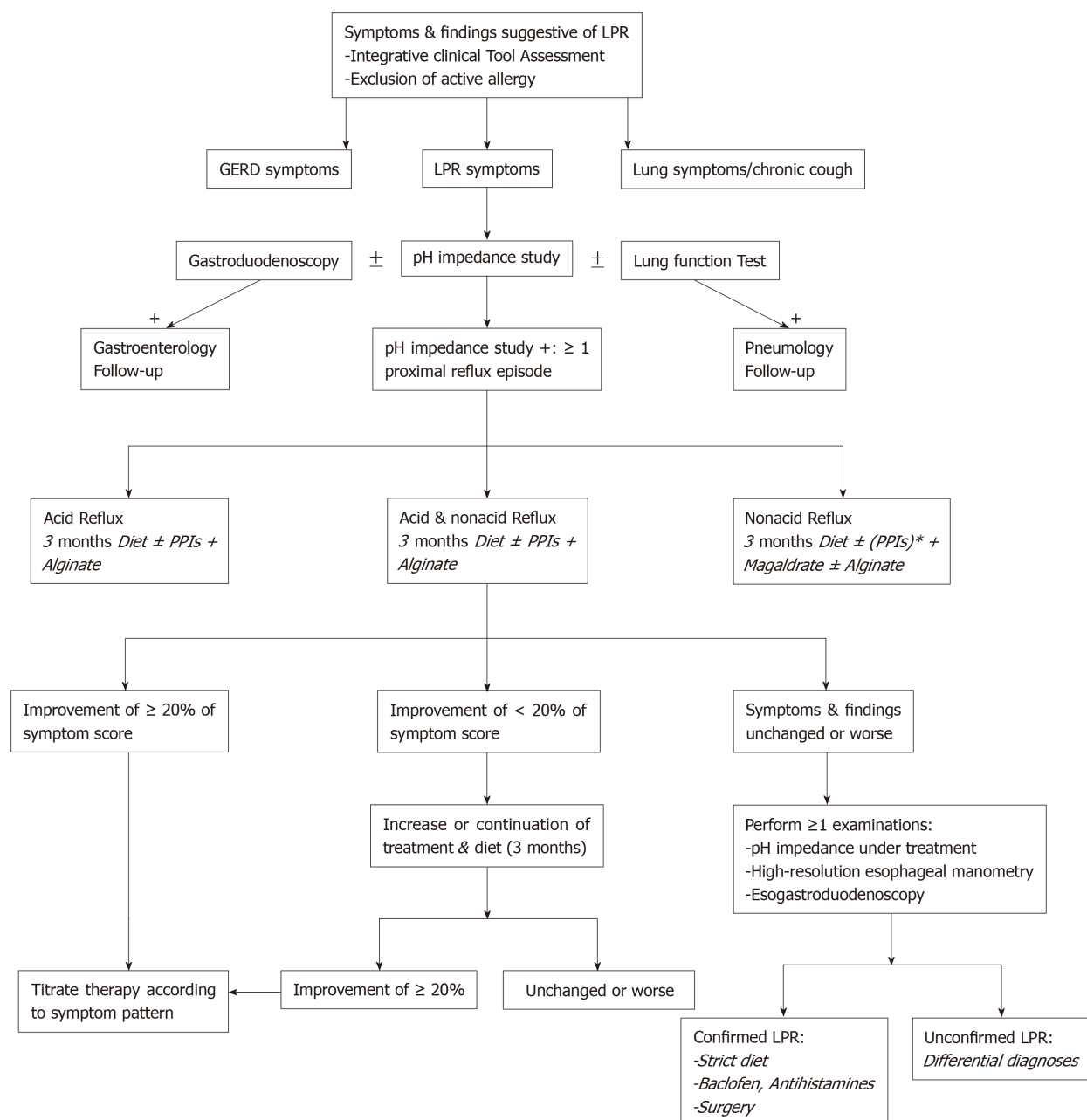


Figure 1 Personalized therapeutic approach for specific laryngopharyngeal reflux disease subtypes. In this algorithm, proximal reflux event was defined as an episode that reached two impedance sensors in the hypopharynx or proximal esophagus. Acidic event consisted of a gaseous or liquid reflux with a pH ≤ 4.0 while nonacidic event was a gaseous or liquid reflux with a pH > 4.0. The LPR diagnosis was based on the occurrence of ≥ 1 proximal episode. Acid reflux episode consisted of an episode with pH ≤ 4.0. Nonacid reflux episode consisted of an episode with pH > 4.0. Because there are no guidelines in the definition of acid, nonacid and mixed laryngopharyngeal reflux disease (LPRD) disease, LPRD was defined as acid when the ratio of number of acid reflux episodes/number of nonacid reflux episodes was > 2. LPRD was defined as nonacid when the ratio of number of acid reflux episodes/number of nonacid reflux episodes < 0.5. Mixed reflux consisted of a ratio ranged from 0.51 to 2.0. *For nonacid LPR, PPIs are not necessary regarding their low efficacy.

ARTICLE HIGHLIGHTS

Research background

For a long time, laryngopharyngeal reflux disease (LPRD) has been treated by proton pump inhibitors (PPIs) with an uncertain success rate.

Research motivation

The low success rate of PPIs as well as the cost of unsuccessful empirical therapeutic trials are important in otolaryngology. Many treatments of LPRD exist and we want to provide an analysis of the current therapeutic approach of this prevalent disease.

Research objectives

To shed light the current therapeutic strategies used for LPRD in order to analysis the rationale in the LPRD treatment.

Research methods

Three authors conducted a PubMed systematic review respecting PRISMA statements.

Research results

The majority of studies consists of empirical therapeutic trials using PPIs as single drug. The success rate of PPIs ranges from 18% to 87% and there is an important heterogeneity between studies according to the diagnostic, the therapeutic outcomes and the duration of treatment.

Research conclusions

The majority of treatments in LPRD are empirical and based on PPIs. The empirical therapeutic trial with PPIs is however associated with an uncertain success rate.

REFERENCES

- 1 **Lechien JR**, Akst LM, Hamdan AL, Schindler A, Karkos PD, Barillari MR, Calvo-Henriquez C, Crevier-Buchman L, Finck C, Eun YG, Saussez S, Vaezi MF. Evaluation and Management of Laryngopharyngeal Reflux Disease: State of the Art Review. *Otolaryngol Head Neck Surg* 2019; **160**: 762-782 [PMID: 30744489 DOI: 10.1177/0194599819827488]
- 2 **Sen P**, Georgalas C, Bhattacharyya AK. A systematic review of the role of proton pump inhibitors for symptoms of laryngopharyngeal reflux. *Clin Otolaryngol* 2006; **31**: 20-4; discussion 24 [PMID: 16441796 DOI: 10.1111/j.1749-4486.2006.01134.x]
- 3 **Koufman JA**. The otolaryngologic manifestations of gastroesophageal reflux disease (GERD): a clinical investigation of 225 patients using ambulatory 24-hour pH monitoring and an experimental investigation of the role of acid and pepsin in the development of laryngeal injury. *Laryngoscope* 1991; **101**: 1-78 [PMID: 1895864 DOI: 10.1002/lary.1991.101.s53.1]
- 4 **Ford CN**. Evaluation and management of laryngopharyngeal reflux. *JAMA* 2005; **294**: 1534-1540 [PMID: 16189367 DOI: 10.1001/jama.294.12.1534]
- 5 **Lechien JR**, Saussez S, Schindler A, Karkos PD, Hamdan AL, Harmegnies B, De Marrez LG, Finck C, Journe F, Paesmans M, Vaezi MF. Clinical outcomes of laryngopharyngeal reflux treatment: A systematic review and meta-analysis. *Laryngoscope* 2019; **129**: 1174-1187 [PMID: 30597577 DOI: 10.1002/lary.27591]
- 6 **Lechien JR**, Dapri G, Dequanter D, Rodriguez Ruiz A, Marechal MT, De Marrez LG, Saussez S, Fisichella PM. Surgical Treatment for Laryngopharyngeal Reflux Disease: A Systematic Review. *JAMA Otolaryngol Head Neck Surg* 2019; **145**: 655-666 [PMID: 31046069 DOI: 10.1001/jamaoto.2019.0315]
- 7 **DistillerSR software**. Systematic and literature review resources 2011. Available from: <http://distillercer.com/resources>
- 8 **Hanson DG**, Kamel PL, Kahrilas PJ. Outcomes of antireflux therapy for the treatment of chronic laryngitis. *Ann Otol Rhinol Laryngol* 1995; **104**: 550-555 [PMID: 7598368 DOI: 10.1177/000348949510400709]
- 9 **Jaspersen D**, Weber R, Hammar CH, Draf W. Effect of omeprazole on the course of associated esophagitis and laryngitis. *J Gastroenterol* 1996; **31**: 765-767 [PMID: 9027637 DOI: 10.1007/BF02358600]
- 10 **Shaw GY**, Searl JP. Laryngeal manifestations of gastroesophageal reflux before and after treatment with omeprazole. *South Med J* 1997; **90**: 1115-1122 [PMID: 9386054 DOI: 10.1097/00007611-199711000-00012]
- 11 **Wo JM**, Grist WJ, Gussack G, Delgaudio JM, Waring JP. Empiric trial of high-dose omeprazole in patients with posterior laryngitis: a prospective study. *Am J Gastroenterol* 1997; **92**: 2160-2165 [PMID: 9399745]
- 12 **Metz DC**, Childs ML, Ruiz C, Weinstein GS. Pilot study of the oral omeprazole test for reflux laryngitis. *Otolaryngol Head Neck Surg* 1997; **116**: 41-46 [PMID: 9018256 DOI: 10.1016/s0194-59989770350-4]
- 13 **Habermann W**, Eherer A, Lindbichler F, Raith J, Friedrich G. Ex juvantibus approach for chronic posterior laryngitis: results of short-term pantoprazole therapy. *J Laryngol Otol* 1999; **113**: 734-739 [PMID: 10748849]
- 14 **Havas T**, Huang S, Levy M, Abi-Hanna D, Truskey P, Priestley J, Cox J, Wilson J. Posterior pharyngolaryngitis: double-blind randomised placebo-controlled trial of proton pump inhibitor therapy. *Aust J Otolaryngol* 1999; **3**: 243-246
- 15 **El-Serag HB**, Lee P, Buchner A, Inadomi JM, Gavin M, McCarthy DM. Lansoprazole treatment of patients with chronic idiopathic laryngitis: a placebo-controlled trial. *Am J Gastroenterol* 2001; **96**: 979-983 [PMID: 11316215 DOI: 10.1111/j.1572-0241.2001.03681.x]
- 16 **Langevin S**, Ngo H. GERD-Induced ENT Symptoms: A Prospective Placebo Controlled Study with omeprazole 40 mg a Day. *Gastroenterology* 2001; **120** [DOI: 10.1016/S0016-5085(08)80080-7]
- 17 **Hamdan AL**, Sharara AI, Younes A, Fuleihan N. Effect of aggressive therapy on laryngeal symptoms and voice characteristics in patients with gastroesophageal reflux. *Acta Otolaryngol* 2001; **121**: 868-872 [PMID: 11718254]
- 18 **Rodríguez-Téllez M**, Galera-Ruiz H, Argüelles-Arias F, Carmona I, Muñoz-Borje F, Herreras JM. Posterior laryngitis: effects of treatment with omeprazole alone. *Rev Esp Enferm Dig* 2002; **94**: 123-130 [PMID: 12185876]
- 19 **Habermann W**, Kiesler K, Eherer A, Friedrich G. Short-term therapeutic trial of proton pump inhibitors in suspected extraesophageal reflux. *J Voice* 2002; **16**: 425-432 [PMID: 12395996]
- 20 **DelGaudio JM**, Waring JP. Empiric esomeprazole in the treatment of laryngopharyngeal reflux. *Laryngoscope* 2003; **113**: 598-601 [PMID: 12671413 DOI: 10.1097/00005537-200304000-00003]
- 21 **Bilgen C**, Ogüt F, Kesimli-Dinç H, Kirazlı T, Bor S. The comparison of an empiric proton pump inhibitor trial vs 24-hour double-probe Ph monitoring in laryngopharyngeal reflux. *J Laryngol Otol* 2003; **117**: 386-390 [PMID: 12803789 DOI: 10.1258/002221503321626438]

- 22 **Garrigues V**, Gisbert L, Bastida G, Ortiz V, Bau I, Nos P, Ponce J. Manifestations of gastroesophageal reflux and response to omeprazole therapy in patients with chronic posterior laryngitis: an evaluation based on clinical practice. *Dig Dis Sci* 2003; **48**: 2117-2123 [PMID: 14705815]
- 23 **Beaver ME**, Stasney CR, Weitzel E, Stewart MG, Donovan DT, Parke RB, Rodriguez M. Diagnosis of laryngopharyngeal reflux disease with digital imaging. *Otolaryngol Head Neck Surg* 2003; **128**: 103-108 [PMID: 12574767 DOI: 10.1067/mhn.2003.10]
- 24 **Siupsinskiene N**, Adamonis K. Diagnostic test with omeprazole in patients with posterior laryngitis. *Medicina (Kaunas)* 2003; **39**: 47-55 [PMID: 12576765]
- 25 **Williams RB**, Szczesniak MM, Maclean JC, Brake HM, Cole IE, Cook IJ. Predictors of outcome in an open label, therapeutic trial of high-dose omeprazole in laryngitis. *Am J Gastroenterol* 2004; **99**: 777-785 [PMID: 15128336 DOI: 10.1111/j.1572-0241.2004.04151.x]
- 26 **Issing WJ**, Karkos PD, Perreas K, Folwaczny C, Reichel O. Dual-probe 24-hour ambulatory pH monitoring for diagnosis of laryngopharyngeal reflux. *J Laryngol Otol* 2004; **118**: 845-848 [PMID: 15638969 DOI: 10.1258/0022215042703660]
- 27 **Sereg-Bahar M**, Jansa R, Hocevar-Boltezar I. Voice disorders and gastroesophageal reflux. *Logoped Phoniatr Vocol* 2005; **30**: 120-124 [PMID: 16287651 DOI: 10.1080/14015430500320182]
- 28 **Park W**, Hicks DM, Khandwala F, Richter JE, Abelson TI, Milstein C, Vaezi MF. Laryngopharyngeal reflux: prospective cohort study evaluating optimal dose of proton-pump inhibitor therapy and pretherapy predictors of response. *Laryngoscope* 2005; **115**: 1230-1238 [PMID: 15995512 DOI: 10.1097/01.MLG.0000163746.81766.45]
- 29 **Vaezi MF**, Richter JE, Stasney CR, Spiegel JR, Iannuzzi RA, Crawley JA, Hwang C, Sostek MB, Shaker R. Treatment of chronic posterior laryngitis with esomeprazole. *Laryngoscope* 2006; **116**: 254-260 [PMID: 16467715 DOI: 10.1097/01.mlg.0000192173.00498.ba]
- 30 **Dore MP**, Pedroni A, Pes GM, Maragkoudakis E, Tadeu V, Pirina P, Realdi G, Delitala G, Malaty HM. Effect of antisecretory therapy on atypical symptoms in gastroesophageal reflux disease. *Dig Dis Sci* 2007; **52**: 463-468 [PMID: 17211695 DOI: 10.1007/s10620-006-9573-7]
- 31 **Qua CS**, Wong CH, Gopala K, Goh KL. Gastro-oesophageal reflux disease in chronic laryngitis: prevalence and response to acid-suppressive therapy. *Aliment Pharmacol Ther* 2007; **25**: 287-295 [PMID: 17269990 DOI: 10.1111/j.1365-2036.2006.03185.x]
- 32 **Oridate N**, Takeda H, Asaka M, Nishizawa N, Mesuda Y, Mori M, Furuta Y, Fukuda S. Acid-suppression therapy offers varied laryngopharyngeal and esophageal symptom relief in laryngopharyngeal reflux patients. *Dig Dis Sci* 2008; **53**: 2033-2038 [PMID: 18080197 DOI: 10.1007/s10620-007-0114-9]
- 33 **Reichel O**, Dressel H, Wiederanders K, Issing WJ. Double-blind, placebo-controlled trial with esomeprazole for symptoms and signs associated with laryngopharyngeal reflux. *Otolaryngol Head Neck Surg* 2008; **139**: 414-420 [PMID: 18722223 DOI: 10.1016/j.ototns.2008.06.003]
- 34 **McGlashan JA**, Johnstone LM, Sykes J, Strugala V, Dettmar PW. The value of a liquid alginate suspension (Gaviscon Advance) in the management of laryngopharyngeal reflux. *Eur Arch Otorhinolaryngol* 2009; **266**: 243-251 [PMID: 18506466 DOI: 10.1007/s00405-008-0708-7]
- 35 **Vashani K**, Muruges M, Hattiangadi G, Gore G, Keer V, Ramesh VS, Sandur V, Bhatia SJ. Effectiveness of voice therapy in reflux-related voice disorders. *Dis Esophagus* 2010; **23**: 27-32 [PMID: 19549211 DOI: 10.1111/j.1442-2050.2009.00992.x]
- 36 **Fass R**, Noelck N, Willis MR, Navarro-Rodriguez T, Wilson K, Powers J, Barkmeier-Kraemer JM. The effect of esomeprazole 20 mg twice daily on acoustic and perception parameters of the voice in laryngopharyngeal reflux. *Neurogastroenterol Motil* 2010; **22**: 134-141, e44-e45 [PMID: 19740116 DOI: 10.1111/j.1365-2982.2009.01392.x]
- 37 **Lam PK**, Ng ML, Cheung TK, Wong BY, Tan VP, Fong DY, Wei WI, Wong BC. Rabepazole is effective in treating laryngopharyngeal reflux in a randomized placebo-controlled trial. *Clin Gastroenterol Hepatol* 2010; **8**: 770-776 [PMID: 20303417 DOI: 10.1016/j.cgh.2010.03.009]
- 38 **Ezzat WF**, Fawaz SA, Fathey H, El Demerdash A. Virtue of adding prokinetics to proton pump inhibitors in the treatment of laryngopharyngeal reflux disease: prospective study. *J Otolaryngol Head Neck Surg* 2011; **40**: 350-356 [PMID: 21777555]
- 39 **Chiba T**, Kudara N, Abiko Y, Endo M, Suzuki K, Sugai T, Ishijima K, Fukuda K, Yamazaki K, Sato H. Effects of proton pump inhibitors in patients with laryngopharyngeal reflux disease. *Hepatogastroenterology* 2011; **58**: 1580-1582 [PMID: 21940324 DOI: 10.5754/hge09607]
- 40 **Friedman M**, Maley A, Kelley K, Pulver T, Foster M, Fisher M, Joseph N. Impact of pH monitoring on laryngopharyngeal reflux treatment: improved compliance and symptom resolution. *Otolaryngol Head Neck Surg* 2011; **144**: 558-562 [PMID: 21493235 DOI: 10.1177/0194599811399240]
- 41 **Lee YS**, Choi SH, Son YI, Park YH, Kim SY, Nam SY. Prospective, observational study using rabepazole in 455 patients with laryngopharyngeal reflux disease. *Eur Arch Otorhinolaryngol* 2011; **268**: 863-869 [PMID: 21221621 DOI: 10.1007/s00405-010-1475-9]
- 42 **Masaany M**, Marina MB, Sharifa Ezat WP, Sani A. Empirical treatment with pantoprazole as a diagnostic tool for symptomatic adult laryngopharyngeal reflux. *J Laryngol Otol* 2011; **125**: 502-508 [PMID: 21356141 DOI: 10.1017/S0022215111000120]
- 43 **Naiboglu B**, Durmus R, Tek A, Toros SZ, Egeli E. Do the laryngopharyngeal symptoms and signs ameliorate by empiric treatment in patients with suspected laryngopharyngeal reflux? *Auris Nasus Larynx* 2011; **38**: 622-627 [PMID: 21320761 DOI: 10.1016/j.anl.2011.01.010]
- 44 **Patigaroo SA**, Hashmi SF, Hasan SA, Ajmal MR, Mehfooz N. Clinical manifestations and role of proton pump inhibitors in the management of laryngopharyngeal reflux. *Indian J Otolaryngol Head Neck Surg* 2011; **63**: 182-189 [PMID: 22468258 DOI: 10.1007/s12070-011-0253-3]
- 45 **Habermann W**, Schmid C, Neumann K, Devaney T, Hammer HF. Reflux symptom index and reflux finding score in otolaryngologic practice. *J Voice* 2012; **26**: e123-e127 [PMID: 21477986 DOI: 10.1016/j.jvoice.2011.02.004]
- 46 **Park JO**, Shim MR, Hwang YS, Cho KJ, Joo YH, Cho JH, Nam IC, Kim MS, Sun DI. Combination of voice therapy and antireflux therapy rapidly recovers voice-related symptoms in laryngopharyngeal reflux patients. *Otolaryngol Head Neck Surg* 2012; **146**: 92-97 [PMID: 21908799 DOI: 10.1177/0194599811422014]
- 47 **Becker V**, Graf S, Schlag C, Schuster T, Feussner H, Schmid RM, Bajbouj M. First agreement analysis and day-to-day comparison of pharyngeal pH monitoring with pH/impedance monitoring in patients with suspected laryngopharyngeal reflux. *J Gastrointest Surg* 2012; **16**: 1096-1101 [PMID: 22450948 DOI: 10.1007/s11605-012-1866-x]
- 48 **Hunchaisri N**. Treatment of laryngopharyngeal reflux: a comparison between domperidone plus

- omeprazole and omeprazole alone. *J Med Assoc Thai* 2012; **95**: 73-80 [PMID: [22379745](#)]
- 49 **Chung JW**, Chun HJ, Lee MS, Ahn KR, Kim CS, Kang KS, Yoo SH, Chung JH, Kim NS, Seo YH, Gong HY, Lee YM. Effect of stellate ganglion block on laryngopharyngeal reflux disease. *Korean J Anesthesiol* 2013; **64**: 439-442 [PMID: [23741567](#) DOI: [10.4097/kjae.2013.64.5.439](#)]
- 50 **Oridate N**, Tokashiki R, Watanabe Y, Taguchi A, Kawamura O, Fujimoto K. Endoscopic laryngeal findings in Japanese patients with laryngopharyngeal reflux symptoms. *Int J Otolaryngol* 2012; **2012**: 908154 [PMID: [22164174](#) DOI: [10.1155/2012/908154](#)]
- 51 **Chun BJ**, Lee DS. The effect of itopride combined with lansoprazole in patients with laryngopharyngeal reflux disease. *Eur Arch Otorhinolaryngol* 2013; **270**: 1385-1390 [PMID: [23292040](#) DOI: [10.1007/s00405-012-2341-8](#)]
- 52 **Beech TJ**, Campbell G, McDermott AL, Batch AJ. The effect of anti-reflux treatment on subjective voice measurements of patients with laryngopharyngeal reflux. *J Laryngol Otol* 2013; **127**: 590-594 [PMID: [23642303](#) DOI: [10.1017/S0022215113000832](#)]
- 53 **Vailati C**, Mazzoleni G, Bondi S, Bussi M, Testoni PA, Passaretti S. Oropharyngeal pH monitoring for laryngopharyngeal reflux: is it a reliable test before therapy? *J Voice* 2013; **27**: 84-89 [PMID: [23159026](#) DOI: [10.1016/j.jvoice.2012.08.006](#)]
- 54 **Lee JS**, Lee YC, Kim SW, Kwon KH, Eun YG. Changes in the quality of life of patients with laryngopharyngeal reflux after treatment. *J Voice* 2014; **28**: 487-491 [PMID: [24598356](#) DOI: [10.1016/j.jvoice.2013.12.015](#)]
- 55 **Chappity P**, Kumar R, Deka RC, Chokkalingam V, Saraya A, Sikka K. Proton Pump Inhibitors Versus Solitary Lifestyle Modification in Management of Laryngopharyngeal Reflux and Evaluating Who is at Risk: Scenario in a Developing Country. *Clin Med Insights Ear Nose Throat* 2014; **7**: 1-5 [PMID: [24653653](#) DOI: [10.4137/CMENT.S13799](#)]
- 56 **Wan Y**, Yan Y, Ma F, Wang L, Lu P, Maytag A, Jiang JJ. LPR: how different diagnostic tools shape the outcomes of treatment. *J Voice* 2014; **28**: 362-368 [PMID: [24491501](#) DOI: [10.1016/j.jvoice.2013.12.004](#)]
- 57 **Semmanaselvan K**, Mukaddam QI, Naik M. An Open Label, Prospective, Single Centre Study to Evaluate the Efficacy and Safety of Fixed Dose Combination of Rabeprazole (Enteric-Coated, EC) 20 mg + Domperidone (Sustained Release, SR) 30 mg Capsule in Treatment of Patients with Laryngopharyngeal Reflux Disease. *J Assoc Physicians India* 2015; **63**: 27-32 [PMID: [26731824](#)]
- 58 **Ozturan O**, Dogan R, Yenigun A, Veyseller B, Yildirim YS. Photographic Objective Alterations for Laryngopharyngeal Reflux Diagnosis. *J Voice* 2017; **31**: 78-85 [PMID: [26873421](#) DOI: [10.1016/j.jvoice.2015.12.021](#)]
- 59 **Gupta N**, Green RW, Megwalu UC. Evaluation of a laryngopharyngeal reflux management protocol. *Am J Otolaryngol* 2016; **37**: 245-250 [PMID: [27178517](#) DOI: [10.1016/j.amjoto.2016.01.008](#)]
- 60 **Nennstiel S**, Andrea M, Abdelhazef M, Haller B, Schmid RM, Bajbouj M, Becker V. pH/multichannel impedance monitoring in patients with laryngo-pharyngeal reflux symptoms - Prediction of therapy response in long-term follow-up. *Arab J Gastroenterol* 2016; **17**: 113-116 [PMID: [27671863](#) DOI: [10.1016/j.ajg.2016.08.007](#)]
- 61 **Batoğlu-Karaaltın A**, Develioğlu ÖN, Tarhan Ö, Külekçi M. The importance of voice analysis in evaluating the effectiveness of reflux treatment. *Kulak Burun Bogaz Ihtis Derg* 2016; **26**: 207-212 [PMID: [27405075](#) DOI: [10.5606/kbbihtisas.2016.80688](#)]
- 62 **Dulery C**, Lechot A, Roman S, Bastier PL, Stoll D, de Gabory L, Zerbib F. A study with pharyngeal and esophageal 24-hour pH-impedance monitoring in patients with laryngopharyngeal symptoms refractory to proton pump inhibitors. *Neurogastroenterol Motil* 2017; **29** [PMID: [27424517](#) DOI: [10.1111/nmo.12909](#)]
- 63 **Joshi AA**, Chiplunkar BG, Bradoo RA. Assessment of treatment response in patients with laryngopharyngeal reflux. *Indian J Otolaryngol Head Neck Surg* 2017; **69**: 77-80 [PMID: [28239584](#) DOI: [10.1007/s12070-016-1046-5](#)]
- 64 **Pullarat AN**, Attakkil A, Sibin. MA, Nayak DR, Pillai S. Hoarseness and Laryngopharyngeal Reflux: A Prospective Study. *Isr J Dent Med Sci* 2017; **16**: 41-50 [DOI: [10.9790/0853-1604014150](#)]
- 65 **Zalvan CH**, Hu S, Greenberg B, Geliebter J. A Comparison of Alkaline Water and Mediterranean Diet vs Proton Pump Inhibition for Treatment of Laryngopharyngeal Reflux. *JAMA Otolaryngol Head Neck Surg* 2017; **143**: 1023-1029 [PMID: [28880991](#) DOI: [10.1001/jamaoto.2017.1454](#)]
- 66 **Carroll TL**, Werner A, Nahikian K, Dezube A, Roth DF. Rethinking the laryngopharyngeal reflux treatment algorithm: Evaluating an alternate empiric dosing regimen and considering up-front, pH-impedance, and manometry testing to minimize cost in treating suspect laryngopharyngeal reflux disease. *Laryngoscope* 2017; **127** Suppl 6: S1-S13 [PMID: [28842999](#) DOI: [10.1002/lary.26806](#)]
- 67 **Lechien JR**, Finck C, Khalife M, Huet K, Delvaux V, Picalugua M, Harmegnies B, Saussez S. Change of signs, symptoms and voice quality evaluations throughout a 3- to 6-month empirical treatment for laryngopharyngeal reflux disease. *Clin Otolaryngol* 2018; **43**: 1273-1282 [PMID: [29768736](#) DOI: [10.1111/coa.13140](#)]
- 68 **Moazzanica F**, Robotti C, Lechien JR, Pizzorni N, Pirola F, Mengucci A, Dell'Era A, Ottaviani F, Schindler A. Vocal Tract Discomfort and Dysphonia in Patients Undergoing Empiric Therapeutic Trial with Proton Pump Inhibitor for Suspected Laryngopharyngeal Reflux. *J Voice* 2018 [PMID: [30563730](#) DOI: [10.1016/j.jvoice.2018.11.002](#)]
- 69 **Wilkie MD**, Fraser HM, Raja H. Gaviskon® Advance alone versus co-prescription of Gaviskon® Advance and proton pump inhibitors in the treatment of laryngopharyngeal reflux. *Eur Arch Otorhinolaryngol* 2018; **275**: 2515-2521 [PMID: [30062580](#) DOI: [10.1007/s00405-018-5079-0](#)]
- 70 **Yang J**, Dehom S, Sanders S, Murry T, Krishna P, Crawley BK. Treating laryngopharyngeal reflux: Evaluation of an anti-reflux program with comparison to medications. *Am J Otolaryngol* 2018; **39**: 50-55 [PMID: [29100672](#) DOI: [10.1016/j.amjoto.2017.10.014](#)]
- 71 **Kirti YK**. Reflux Finding Score (RFS) a Quantitative Guide for Diagnosis and Treatment of Laryngopharyngeal Reflux. *Indian J Otolaryngol Head Neck Surg* 2018; **70**: 362-365 [PMID: [30211090](#) DOI: [10.1007/s12070-018-1350-3](#)]
- 72 **Suzuki M**, Yokota M, Matsumoto T, Nakayama M, Takemura M, Kanemitsu Y, Niimi A, Nakamura Y, Murakami S. Proton Pump Inhibitor Ameliorates Taste Disturbance among Patients with Laryngopharyngeal Reflux: A Randomized Controlled Study. *Tohoku J Exp Med* 2019; **247**: 19-25 [PMID: [30643081](#) DOI: [10.1620/tjem.247.19](#)]
- 73 **Noordzij JP**, Khidr A, Desper E, Meek RB, Reibel JF, Levine PA. Correlation of pH probe-measured laryngopharyngeal reflux with symptoms and signs of reflux laryngitis. *Laryngoscope* 2002; **112**: 2192-2195 [PMID: [12461340](#) DOI: [10.1097/00005537-200212000-00013](#)]
- 74 **Belafsky PC**, Postma GN, Koufman JA. The validity and reliability of the reflux finding score (RFS).

- Laryngoscope* 2001; **111**: 1313-1317 [PMID: 11568561 DOI: 10.1097/00005537-200108000-00001]
- 75 **Belafsky PC**, Postma GN, Koufman JA. Validity and reliability of the reflux symptom index (RSI). *J Voice* 2002; **16**: 274-277 [PMID: 12150380 DOI: 10.1016/S0892-1997(02)00097-8]
- 76 **Eherer AJ**, Habermann W, Hammer HF, Kiesler K, Friedrich G, Krejs GJ. Effect of pantoprazole on the course of reflux-associated laryngitis: a placebo-controlled double-blind crossover study. *Scand J Gastroenterol* 2003; **38**: 462-467 [PMID: 12795454 DOI: 10.1080/00365520310001860]
- 77 **Steward DL**, Wilson KM, Kelly DH, Patil MS, Schwartzbauer HR, Long JD, Welge JA. Proton pump inhibitor therapy for chronic laryngo-pharyngitis: a randomized placebo-control trial. *Otolaryngol Head Neck Surg* 2004; **131**: 342-350 [PMID: 15467597 DOI: 10.1016/j.otohns.2004.03.037]
- 78 **Wo JM**, Koopman J, Harrell SP, Parker K, Winstead W, Lentsch E. Double-blind, placebo-controlled trial with single-dose pantoprazole for laryngopharyngeal reflux. *Am J Gastroenterol* 2006; **101**: 1972-8; quiz 2169 [PMID: 16968502 DOI: 10.1111/j.1572-0241.2006.00693.x]
- 79 **Jin BJ**, Lee YS, Jeong SW, Jeong JH, Lee SH, Tae K, Chang CS, Liang WM. Change of acoustic parameters before and after treatment in laryngopharyngeal reflux patients. *Laryngoscope* 2008; **118**: 938-941 [PMID: 18520188 DOI: 10.1097/MLG.0b013e3181651c3a]
- 80 **Lien HC**, Wang CC, Lee SW, Hsu JY, Yeh HZ, Ko CW, Chang CS, Liang WM. Responder Definition of a Patient-Reported Outcome Instrument for Laryngopharyngeal Reflux Based on the US FDA Guidance. *Value Health* 2015; **18**: 396-403 [PMID: 26091593 DOI: 10.1016/j.jval.2015.01.001]
- 81 **Waxman J**, Yalamanchali S, Valle ES, Pott T, Friedman M. Effects of Proton Pump Inhibitor Therapy for Laryngopharyngeal Reflux on Posttreatment Symptoms and Hypopharyngeal pH. *Otolaryngol Head Neck Surg* 2014; **150**: 1010-1017 [PMID: 24647643 DOI: 10.1177/0194599814525577]
- 82 **Tseng WH**, Tseng PH, Wu JF, Hsu YC, Lee TY, Ni YH, Wang HP, Hsiao TY, Hsu WC. Double-blind, placebo-controlled study with alginate suspension for laryngopharyngeal reflux disease. *Laryngoscope* 2018; **128**: 2252-2260 [PMID: 29399800 DOI: 10.1002/lary.27111]
- 83 **Agrawal N**, Yadlapati R, Shabeeb N, Price CP, Lidder A, Shintani-Smith S, Bové M, Pandolfino J, Tan B. Relationship between extralaryngeal endoscopic findings, proton pump inhibitor (PPI) response, and pH measures in suspected laryngopharyngeal reflux. *Dis Esophagus* 2019; **32** [PMID: 30101358 DOI: 10.1093/dote/doy072]
- 84 **Koufman J**, Sataloff RT, Toohill R. Laryngopharyngeal reflux: consensus conference report. *J Voice* 1996; **10**: 215-216 [PMID: 8865091 DOI: 10.1016/S0892-1997(96)80001-4]
- 85 **Lechien JR**, Muls V, Dapri G, Mouawad F, Eisendrath P, Schindler A, Nacci A, Barillari MR, Finck C, Saussez S, Akst LM, Sataloff RT. The management of suspected or confirmed laryngopharyngeal reflux patients with recalcitrant symptoms: A contemporary review. *Clin Otolaryngol* 2019; **44**: 784-800 [PMID: 31230417 DOI: 10.1111/coa.13395]
- 86 **Savarino E**, de Bortoli N, Zentilin P, Martinucci I, Bruzzzone L, Furnari M, Marchi S, Savarino V. Alginate controls heartburn in patients with erosive and nonerosive reflux disease. *World J Gastroenterol* 2012; **18**: 4371-4378 [PMID: 22969201 DOI: 10.3748/wjg.v18.i32.4371]
- 87 **Johnston N**, Dettmar PW, Ondrey FG, Nanchal R, Lee SH, Bock JM. Pepsin: biomarker, mediator, and therapeutic target for reflux and aspiration. *Ann N Y Acad Sci* 2018; **1434**: 282-289 [PMID: 29774546 DOI: 10.1111/nyas.13729]
- 88 **Johnston N**, Ondrey F, Rosen R, Hurley BP, Gould J, Allen J, DelGaudio J, Altman KW. Airway reflux. *Ann N Y Acad Sci* 2016; **1381**: 5-13 [PMID: 27310222 DOI: 10.1111/nyas.13080]
- 89 **Johnston N**, Wells CW, Samuels TL, Blumin JH. Pepsin in nonacidic refluxate can damage hypopharyngeal epithelial cells. *Ann Otol Rhinol Laryngol* 2009; **118**: 677-685 [PMID: 19810610 DOI: 10.1177/000348940911800913]
- 90 **Vela MF**, Camacho-Lobato L, Srinivasan R, Tutuian R, Katz PO, Castell DO. Simultaneous intraesophageal impedance and pH measurement of acid and nonacid gastroesophageal reflux: effect of omeprazole. *Gastroenterology* 2001; **120**: 1599-1606 [PMID: 11375942 DOI: 10.1053/gast.2001.24840]
- 91 **Shin JM**, Sachs G. Pharmacology of proton pump inhibitors. *Curr Gastroenterol Rep* 2008; **10**: 528-534 [DOI: 10.1007/s11894-008-0098-4]
- 92 **Lew EA**. Review article: pharmacokinetic concerns in the selection of anti-ulcer therapy. *Aliment Pharmacol Ther* 1999; **13** Suppl 5: 11-16 [PMID: 10555604 DOI: 10.1046/j.1365-2036.1999.00034.x]
- 93 **Savarino E**, Zentilin P, Marabotto E, Bodini G, Della Coletta M, Frazzoni M, de Bortoli N, Martinucci I, Tolone S, Pellegatta G, Savarino V. A review of pharmacotherapy for treating gastroesophageal reflux disease (GERD). *Expert Opin Pharmacother* 2017; **18**: 1333-1343 [PMID: 28754071 DOI: 10.1080/14656566.2017.1361407]
- 94 **Castell DO**. Rationale for high-dose H2-receptor blockade in the treatment of gastro-oesophageal reflux disease. *Aliment Pharmacol Ther* 1991; **5** Suppl 1: 59-67 [PMID: 1679673 DOI: 10.1111/j.1365-2036.1991.tb00749.x]
- 95 **Postma GN**, Johnson LF, Koufman JA. Treatment of laryngopharyngeal reflux. *Ear Nose Throat J* 2002; **81**: 24-26 [PMID: 12353429 DOI: 10.1177/014556130208100607]
- 96 **Ren LH**, Chen WX, Qian LJ, Li S, Gu M, Shi RH. Addition of prokinetics to PPI therapy in gastroesophageal reflux disease: a meta-analysis. *World J Gastroenterol* 2014; **20**: 2412-2419 [PMID: 24605040 DOI: 10.3748/wjg.v20.i9.2412]
- 97 **Mikami H**, Ishimura N, Fukazawa K, Okada M, Izumi D, Shimura S, Okimoto E, Aimi M, Ishihara S, Kinoshita Y. Effects of Metoclopramide on Esophageal Motor Activity and Esophagogastric Junction Compliance in Healthy Volunteers. *J Neurogastroenterol Motil* 2016; **22**: 112-117 [PMID: 26507875 DOI: 10.5056/jnm15130]
- 98 **Quigley EM**. Cisapride: what can we learn from the rise and fall of a prokinetic? *J Dig Dis* 2011; **12**: 147-156 [PMID: 21615867 DOI: 10.1111/j.1751-2980.2011.00491.x]
- 99 **Glicksman JT**, Mick PT, Fung K, Carroll TL. Prokinetic agents and laryngopharyngeal reflux disease: Prokinetic agents and laryngopharyngeal reflux disease: a systematic review. *Laryngoscope* 2014; **124**: 2375-2379 [PMID: 24782414 DOI: 10.1002/lary.24738]
- 100 **Vardar R**, Sweis R, Anggiansah A, Wong T, Fox MR. Upper esophageal sphincter and esophageal motility in patients with chronic cough and reflux: assessment by high-resolution manometry. *Dis Esophagus* 2013; **26**: 219-225 [PMID: 22591118 DOI: 10.1111/j.1442-2050.2012.01354.x]
- 101 **Benjamin T**, Zackria S, Lopez R, Richter J, Thota PN. Upper esophageal sphincter abnormalities and high-resolution esophageal manometry findings in patients with laryngopharyngeal reflux. *Scand J Gastroenterol* 2017; **52**: 816-821 [PMID: 28471304 DOI: 10.1080/00365521.2017.1322139]
- 102 **Lechien JR**, Bobin F, Muls V, Thill MP, Horoi M, Ostermann K, Huet K, Harnegnies B, Dequanter D, Dapri G, Maréchal MT, Finck C, Rodriguez Ruiz A, Saussez S. Validity and reliability of the reflux

- symptom score. *Laryngoscope* 2019 [PMID: 30983002 DOI: 10.1002/lary.28017]
- 103 **Lee JS**, Jung AR, Park JM, Park MJ, Lee YC, Eun YG. Comparison of Characteristics According to Reflux Type in Patients With Laryngopharyngeal Reflux. *Clin Exp Otorhinolaryngol* 2018; **11**: 141-145 [PMID: 28993603 DOI: 10.21053/ceo.2017.00577]
- 104 **Lee YC**, Kwon OE, Park JM, Eun YG. Do laryngoscopic findings reflect the characteristics of reflux in patients with laryngopharyngeal reflux? *Clin Otolaryngol* 2018; **43**: 137-143 [PMID: 28605121 DOI: 10.1111/coa.12914]
- 105 **Sereg-Bahar M**, Jerin A, Jansa R, Stabuc B, Hovevar-Boltezar I. Pepsin and bile acids in saliva in patients with laryngopharyngeal reflux - a prospective comparative study. *Clin Otolaryngol* 2015; **40**: 234-239 [PMID: 25516364 DOI: 10.1111/coa.12358]
- 106 **Woodland P**, Lee C, Duraisamy Y, Farré R, Dettmar P, Sifrim D. Assessment and protection of esophageal mucosal integrity in patients with heartburn without esophagitis. *Am J Gastroenterol* 2013; **108**: 535-543 [PMID: 23358463 DOI: 10.1038/ajg.2012.469]
- 107 **Zentilin P**, Dulbecco P, Savarino E, Parodi A, Iiritano E, Bilardi C, Reglioni S, Vigneri S, Savarino V. An evaluation of the antireflux properties of sodium alginate by means of combined multichannel intraluminal impedance and pH-metry. *Aliment Pharmacol Ther* 2005; **21**: 29-34 [PMID: 15644042 DOI: 10.1111/j.1365-2036.2004.02298.x]
- 108 **Lechien JR**, Huet K, Khalife M, De Marrez LG, Finck C, Harmegnies B, Saussez S. Alkaline, protein, low-fat and low-acid diet in laryngopharyngeal reflux disease: Our experience on 65 patients. *Clin Otolaryngol* 2019; **44**: 379-384 [PMID: 30548197 DOI: 10.1111/coa.13269]



Published By Baishideng Publishing Group Inc
7041 Koll Center Parkway, Suite 160, Pleasanton, CA 94566, USA
Telephone: +1-925-2238242
E-mail: bpgoffice@wjgnet.com
Help Desk: <https://www.f6publishing.com/helpdesk>
<https://www.wjgnet.com>

