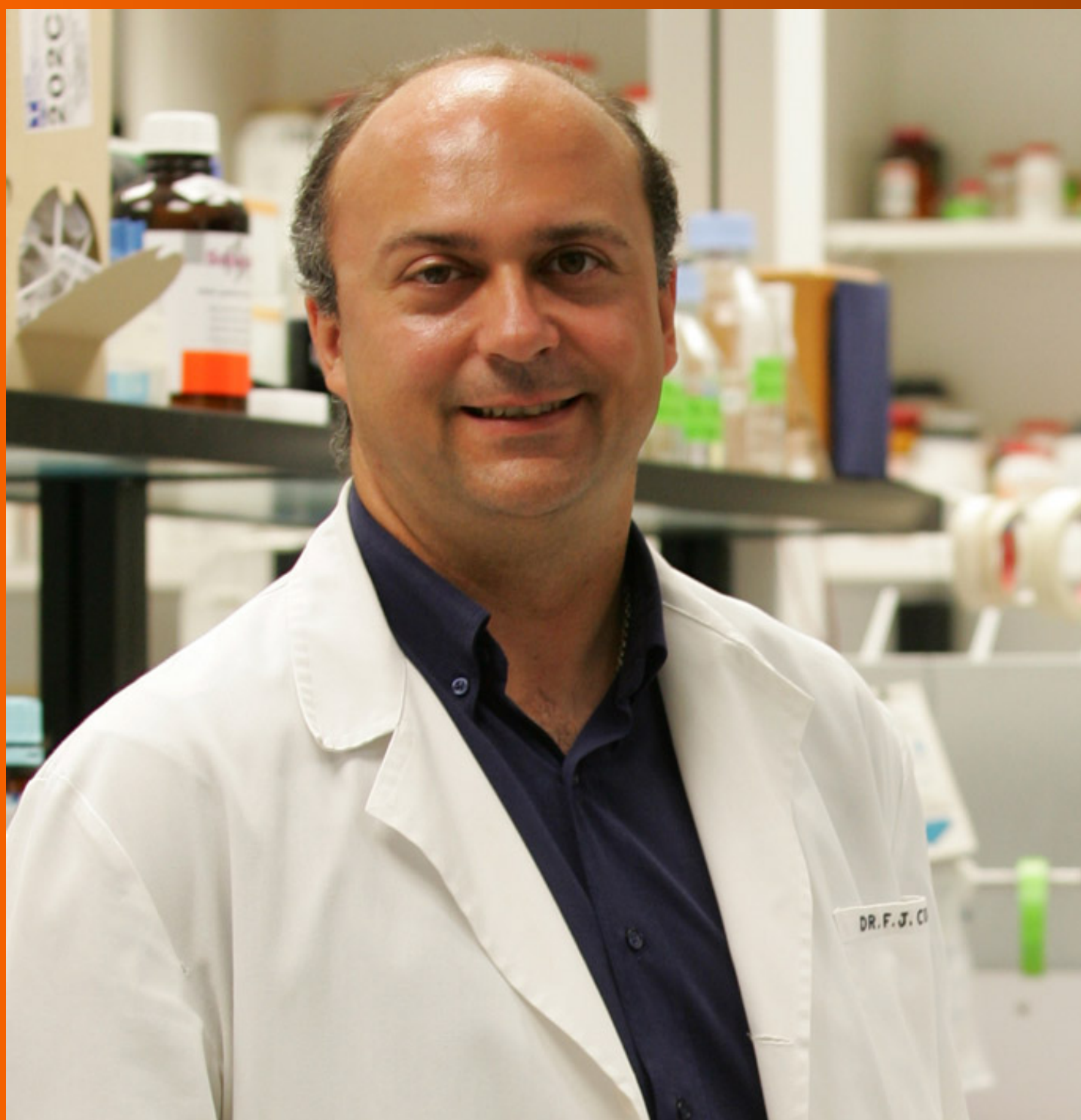


# World Journal of *Gastroenterology*

*World J Gastroenterol* 2019 July 14; 25(26): 3283-3467



**OPINION REVIEW**

- 3283** Diuretic window hypothesis in cirrhosis: Changing the point of view  
*Brito-Azevedo A*
- 3291** Fluoroquinolones for the treatment of latent *Mycobacterium tuberculosis* infection in liver transplantation  
*Silva JT, San-Juan R, Fernández-Ruiz M, Aguado JM*

**REVIEW**

- 3299** Reactivation of hepatitis B virus infection in patients with hemo-lymphoproliferative diseases, and its prevention  
*Sagnelli C, Pisaturo M, Calò F, Martini S, Sagnelli E, Coppola N*
- 3313** Current status of endoscopic retrograde cholangiopancreatography in patients with surgically altered anatomy  
*Krutsri C, Kida M, Yamauchi H, Iwai T, Imaizumi H, Koizumi W*

**MINIREVIEWS**

- 3334** Choledochal cysts: Similarities and differences between Asian and Western countries  
*Baison GN, Bonds MM, Helton WS, Kozarek RA*
- 3344** Gastro-duodenal disease in Africa: Literature review and clinical data from Accra, Ghana  
*Archampong TN, Asmah RH, Richards CJ, Martin VJ, Bayliss CD, David L, Beleza S, Carrilho C, Botão E*
- 3359** Screening of aptamers and their potential application in targeted diagnosis and therapy of liver cancer  
*Zhang GQ, Zhong LP, Yang N, Zhao YX*

**ORIGINAL ARTICLE****Basic Study**

- 3370** Drug-eluting fully covered self-expanding metal stent for dissolution of bile duct stones *in vitro*  
*Huang C, Cai XB, Guo LL, Qi XS, Gao Q, Wan XJ*
- 3380** Raddeanin A promotes apoptosis and ameliorates 5-fluorouracil resistance in cholangiocarcinoma cells  
*Guo SS, Wang Y, Fan QX*
- 3392** Identification of differentially expressed genes regulated by methylation in colon cancer based on bioinformatics analysis  
*Liang Y, Zhang C, Dai DQ*

**Retrospective Study**

- 3408** Histologic features and genomic alterations of primary colorectal adenocarcinoma predict growth patterns of liver metastasis  
*Wu JB, Sarmiento AL, Fiset PO, Lazaris A, Metrakos P, Petrillo S, Gao ZH*

**Observational Study**

- 3426** International normalized ratio and Model for End-stage Liver Disease score predict short-term outcome in cirrhotic patients after the resolution of hepatic encephalopathy  
*Hu XP, Gao J*

**SYSTEMATIC REVIEWS**

- 3438** Synchronous resection of esophageal cancer and other organ malignancies: A systematic review  
*Papaconstantinou D, Tsilimigras DI, Moris D, Michalinos A, Mastoraki A, Mpali E, Hasemaki N, Bakopoulos A, Filippou D, Schizas D*

**META-ANALYSIS**

- 3450** Genetic testing vs microforceps biopsy in pancreatic cysts: Systematic review and meta-analysis  
*Faias S, Pereira L, Luís Á, Chaves P, Cravo M*

## ABOUT COVER

Editorial board member of *World Journal of Gastroenterology*, Andrew Stewart Day, MD, Professor, Paediatrics Department, University of Otago, Christchurch 8041, New Zealand

## AIMS AND SCOPE

*World Journal of Gastroenterology* (*World J Gastroenterol*, *WJG*, print ISSN 1007-9327, online ISSN 2219-2840, DOI: 10.3748) is a peer-reviewed open access journal. The *WJG* Editorial Board consists of 701 experts in gastroenterology and hepatology from 58 countries.

The primary task of *WJG* is to rapidly publish high-quality original articles, reviews, and commentaries in the fields of gastroenterology, hepatology, gastrointestinal endoscopy, gastrointestinal surgery, hepatobiliary surgery, gastrointestinal oncology, gastrointestinal radiation oncology, etc. The *WJG* is dedicated to become an influential and prestigious journal in gastroenterology and hepatology, to promote the development of above disciplines, and to improve the diagnostic and therapeutic skill and expertise of clinicians.

## INDEXING/ABSTRACTING

The *WJG* is now indexed in Current Contents®/Clinical Medicine, Science Citation Index Expanded (also known as SciSearch®), Journal Citation Reports®, Index Medicus, MEDLINE, PubMed, PubMed Central, and Scopus. The 2019 edition of Journal Citation Report® cites the 2018 impact factor for *WJG* as 3.411 (5-year impact factor: 3.579), ranking *WJG* as 35<sup>th</sup> among 84 journals in gastroenterology and hepatology (quartile in category Q2). CiteScore (2018): 3.43.

## RESPONSIBLE EDITORS FOR THIS ISSUE

Responsible Electronic Editor: Yan-Liang Zhang

Proofing Production Department Director: Yun-Xiaojian Wu

## NAME OF JOURNAL

*World Journal of Gastroenterology*

## ISSN

ISSN 1007-9327 (print) ISSN 2219-2840 (online)

## LAUNCH DATE

October 1, 1995

## FREQUENCY

Weekly

## EDITORS-IN-CHIEF

Subrata Ghosh, Andrzej S. Tarnawski

## EDITORIAL BOARD MEMBERS

<http://www.wjgnet.com/1007-9327/editorialboard.htm>

## EDITORIAL OFFICE

Ze-Mao Gong, Director

## PUBLICATION DATE

July 14, 2019

## COPYRIGHT

© 2019 Baishideng Publishing Group Inc

## INSTRUCTIONS TO AUTHORS

<https://www.wjgnet.com/bpg/gerinfo/204>

## GUIDELINES FOR ETHICS DOCUMENTS

<https://www.wjgnet.com/bpg/GerInfo/287>

## GUIDELINES FOR NON-NATIVE SPEAKERS OF ENGLISH

<https://www.wjgnet.com/bpg/gerinfo/240>

## PUBLICATION MISCONDUCT

<https://www.wjgnet.com/bpg/gerinfo/208>

## ARTICLE PROCESSING CHARGE

<https://www.wjgnet.com/bpg/gerinfo/242>

## STEPS FOR SUBMITTING MANUSCRIPTS

<https://www.wjgnet.com/bpg/GerInfo/239>

## ONLINE SUBMISSION

<https://www.f6publishing.com>





## Basic Study

# Raddeanin A promotes apoptosis and ameliorates 5-fluorouracil resistance in cholangiocarcinoma cells

Shuang-Shuang Guo, Ying Wang, Qing-Xia Fan

**ORCID number:** Shuang-Shuang Guo (0000-0002-7145-6852); Ying Wang (0000-0002-8464-6583); Qing-Xia Fan (0000-0001-7836-7249).

**Author contributions:** Guo SS performed the experiments, analyzed the data, and wrote the manuscript; Wang Y analyzed the data; Fan QX designed the experiments and edited the manuscript.

**Institutional review board statement:** This study was reviewed and approved by the First Affiliated Hospital of Zhengzhou University.

**Conflict-of-interest statement:** All authors have nothing to disclose.

**Open-Access:** This article is an open-access article which was selected by an in-house editor and fully peer-reviewed by external reviewers. It is distributed in accordance with the Creative Commons Attribution Non Commercial (CC BY-NC 4.0) license, which permits others to distribute, remix, adapt, build upon this work non-commercially, and license their derivative works on different terms, provided the original work is properly cited and the use is non-commercial. See: <http://creativecommons.org/licenses/by-nc/4.0/>

**Manuscript source:** Unsolicited manuscript

**Received:** April 12, 2019

**Peer-review started:** April 12, 2019

**First decision:** May 9, 2019

**Revised:** May 18, 2019

**Shuang-Shuang Guo, Qing-Xia Fan,** Department of Oncology, the First Affiliated Hospital of Zhengzhou University, Zhengzhou 450052, Henan Province, China

**Shuang-Shuang Guo, Ying Wang,** Department of Oncology, First Affiliated Hospital, College of Clinical Medicine, Henan University of Science and Technology, Luoyang 471000, Henan Province, China

**Corresponding author:** Qing-Xia Fan, MD, PhD, Doctor, Department of Oncology, the First Affiliated Hospital of Zhengzhou University, 1 Jianshe East Road, Erqi District, Zhengzhou 450052, Henan Province, China. [huinaochange81@163.com](mailto:huinaochange81@163.com)

**Telephone:** +86-371-66265533

**Fax:** +86-371-66265533

## Abstract

### BACKGROUND

Bile duct cancer is characterized by fast metastasis and invasion and has been regarded as one of the most aggressive tumors due to the absence of effective diagnosis at an early stage. Therefore, it is in the urgent demand to explore novel diagnostic approaches and therapeutic strategies for bile duct cancer to improve patient survival. Raddeanin A (RA) is extracted from the anemone raddeana regel and has been demonstrated to play antitumor roles in various cancers.

### AIM

To investigate the effects of RA treatment on bile duct cancer cells.

### METHODS

In this study, four cholangiocarcinoma cell lines (RBE, LIPF155C, LIPF178C, and LICCF) treated with RA were used to test the cell viability. The RA-associated cell functional analysis, 5-fluorouracil (5-Fu) effectiveness as well as cell cycle- and apoptosis-related protein expression were investigated.

### RESULTS

RA reduced cell viability in a dose-dependent pattern in four cell lines, and the migration and colony formation abilities were also impaired by RA in RBE and LIPF155C cell lines. RA sensitized cell lines to 5-Fu treatment and enhanced the effects of 5-Fu in cholangiocarcinoma. Also, RA decreased protein expression of Wee1, while the combinational effect of RA and 5-Fu decreased protein expressions of cyclooxygenase-2, B cell lymphoma 2, and Wee1 but increased protein levels of Bax, cyclin D1, and cyclin E.

### CONCLUSION

**Accepted:** May 31, 2019  
**Article in press:** June 1, 2019  
**Published online:** July 14, 2019

**P-Reviewer:** Katuchova J, Tanabe S  
**S-Editor:** Yan JP  
**L-Editor:** Wang TQ  
**E-Editor:** Zhang YL



Taken together, the results suggest that RA acts as an anti-cancer agent and enhancer of 5-Fu in bile duct cancer cells *via* regulating multiple cell cycle and apoptosis-related proteins. This finding provides novel clues to exploring a novel antitumor drug for bile duct cancer.

**Key words:** Bile duct cancer; Raddeanin A; 5-fluorouracil; Cell cycle; Apoptosis

©The Author(s) 2019. Published by Baishideng Publishing Group Inc. All rights reserved.

**Core tip:** We report that raddeanin A (RA) reduced cell viability, migration, and colony formation abilities in cholangiocarcinoma cells and enhanced the antitumor effect of 5-Fu in cholangiocarcinoma cells. This study also demonstrated that the anticancer effects of RA were associated with apoptosis-related proteins Bax and B cell lymphoma 2 as well as cell cycle-related proteins Wee1, cyclin D1, cyclin E, and cyclooxygenase-2.

**Citation:** Guo SS, Wang Y, Fan QX. Raddeanin A promotes apoptosis and ameliorates 5-fluorouracil resistance in cholangiocarcinoma cells. *World J Gastroenterol* 2019; 25(26): 3380-3391

**URL:** <https://www.wjgnet.com/1007-9327/full/v25/i26/3380.htm>

**DOI:** <https://dx.doi.org/10.3748/wjg.v25.i26.3380>

## INTRODUCTION

Bile duct cancer (cholangiocarcinoma) is characterized by fast metastasis and invasion and, more importantly, the absence of effective diagnosis at an early stage<sup>[1]</sup>, and it thus has been regarded as one of the most aggressive tumors that occur in bile duct epithelial cells<sup>[2]</sup>. To date, although surgical resection is one of the few curative treatments for bile duct cancer, the patients are often diagnosed at the advanced stage and have lost the chance of surgical resection at diagnosis<sup>[3]</sup>. In addition, the 5-year survival rate and effective therapeutic level for bile duct cancer have not greatly improved in recent years<sup>[3]</sup>. Therefore, it is in the urgent need to explore novel diagnostic approaches and therapeutic strategies for bile duct cancer to improve patient survival.

Raddeanin A (RA), an active triterpenoid saponin, is extracted from the anemone raddeana regel that is a traditional medicinal herb in Chinese medicine<sup>[4]</sup>. An increasing amount of evidence has demonstrated that RA plays a cytotoxic role in facilitating apoptosis of tumor cells and suppressing their proliferation, migration, and invasion<sup>[5]</sup>, thus exhibiting anticancer effects on various cancer types. In gastric cancer, RA results in tumor cell apoptosis *via* regulating the molecules involved in the caspase-cascade pathway, such as B cell lymphoma 2 (Bcl-2) family<sup>[4]</sup>. Also, RA has been demonstrated to cause apoptosis in a concentration-dependent pattern in colorectal cancer cells via mechanisms associated with suppressing NF- $\kappa$ B and activated Wnt/ $\beta$ -catenin signaling in colorectal cancer cells<sup>[6]</sup>. Furthermore, the PI3K/AKT/mTOR pathway is involved in the RA-induced apoptosis in breast cancer cells<sup>[7]</sup>. Collectively, RA-associated apoptosis in various types of cancer cells display a cancer type-dependent pattern, suggesting the necessity of proapoptotic effect of RA in cholangiocarcinoma cells.

Malignant tumor formation is a highly complicated process, involving a series of carcinogens, tumor promotion, apoptosis, and metastatic process<sup>[8]</sup>. Cyclooxygenase-2 (Cox-2), a cyclooxygenase enzyme, catalyzes the first step of prostanoids synthesis<sup>[9]</sup>. Cox-2 is highly expressed in cancer and stroma cells during tumor progression and displays anti-apoptosis roles in tumor cells<sup>[10]</sup>. In addition, a group of factors that are essential for the regulation of the cell cycle have been demonstrated to be closely related to malignancies. For example, aberrant overexpression of cyclins D1 and E, two members of the cyclin family<sup>[11]</sup>, contributes to carcinogenesis and malignant progression due to the dysfunction of the cell cycle<sup>[12,13]</sup>. Wee1 is essential for G2 cell cycle checkpoint in response to DNA damage and repair<sup>[14]</sup> and overexpressed Wee1 has been linked to a number of cancers, such as carcinoma<sup>[15]</sup> and glioblastoma<sup>[16]</sup>. Furthermore, apoptosis has been shown to be closely related to a series of cancers<sup>[17]</sup>, in which the mitochondrial-related proteins bcl-2 and Bax are highly involved in the regulation of mitochondrial membrane properties, leading to activation of subsequent

pathways of apoptosis<sup>[18,19]</sup>.

Currently, 5-fluorouracil (5-Fu) is one of the most common chemotherapeutic compounds for cancer treatment<sup>[20]</sup>. The resistance to chemotherapy is a primary challenge for cancer treatment<sup>[21]</sup>. Thus, any approach or compound that can sensitize 5-Fu-resistant cells would be beneficial to cancer patients. Given its potential anti-cancer effect, the objective of this study was to investigate the effects of RA treatment on bile duct cancer cells including related chemotherapy resistance as well as the underlying mechanisms. This study also aimed to provide clues to the application of RA for the therapy of bile duct cancer.

## MATERIALS AND METHODS

### Cell lines

Cholangiocarcinoma cell lines (RBE, LIPF155C, LIPF178C, and LICCF) were purchased from the cell bank of China Center for Type Culture Collection (CCTCC at Wuhan University). The normal intrahepatic biliary epithelial cell line HIBEpiC was obtained from the ATCC (Manassas, VA, United States).

### Viability assay

The ATPlite assay (Perkin Elmer, United States) was applied to evaluate cell viability according to the manufacturer's instructions ( $n = 3$  independent experiments). Cells were seeded in 96-well plates (Corning-Costar, United States) and cultured for 24 h. RA at doses ranging from 0 to 160  $\mu\text{g}/\text{mL}$  was applied to treat the cells for 24 h. Cell viability was evaluated using a microplate reader (BioRad, United States).

### Migration and invasion assays

Wound-healing migration and Transwell invasion assays were used to test migratory cell ability in RBE and LIPF155C cell lines ( $n = 3$  independent experiments). The assays were performed as previously reported<sup>[22]</sup>.

### Clonogenic assay

The clonogenic assay was performed to test colony formation ability in RBE and LIPF155C cell lines ( $n = 3$  independent experiments). RBE and LIPF155C cells (70% confluence) were treated transiently with metformin (0.5mM). Cells were then detached and seeded in 6-well plates (600 cells/well) (Corning-Costar, United States) in drug-free media. Fresh media (25%) were added every three days. Cell colony was stained with crystal violet and the number of colonies was counted ten days later.

### Hoechst staining assay

Hoechst staining assay was performed to test cell apoptosis ( $n = 3$  independent experiments). The assay was performed as previously reported<sup>[23]</sup>. Hoechst (Sigma, United States) stained cells were visualized by fluorescence microscopy (Olympus, Japan).

### Western blot analysis

Cell protein was isolated by using the cell lysis buffer (Beyotime Institute of Biotechnology, China). Western blot analysis was performed as previously reported<sup>[22]</sup>. The primary antibodies for Cox-2, Bcl-2, Bax, GAPDH, cyclin D1, cyclin E, and Wee1 were obtained from Santa Cruz Biotechnology (United States). Quantification of optical density was evaluated using Uvitec Alliance software (Eppendorf, Germany) ( $n = 3$  independent experiments).

### Statistical analysis

Data are expressed as the mean  $\pm$  standard error of the mean and analyzed *via* SPSS 19.0 (SPSS Inc, United States). The two-group comparison was performed by two-tailed *t*-tests and multiple comparisons were analyzed by ANOVA and the post-hoc Tukey test. In this study, statistical significance was set at  $P < 0.05$ .

## RESULTS

### Viability of cholangiocarcinoma cell lines treated with RA

RA at doses ranging from 0-160  $\mu\text{g}/\text{mL}$  was applied for 24 h to test the cell viability of four cholangiocarcinoma cell lines (RBE, LIPF155C, LIPF178C, and LICCF) and one normal intrahepatic biliary epithelial cell line (HIBEpiC) *via* the ATPlite assay. RA was found to reduce cell viability in a dose-dependent pattern (Figure 1A). The half-

maximal effective concentration (EC50) and the half-maximal lethal concentration (LC50) for each line were also evaluated (Figure 1B). EC50 and LC50 ranges in the four tumoral cell lines were 50.95-64.76 µg/mL and 34.65-49.47 µg/mL, respectively, while HIBEpiC showed higher values of EC50 (79.52 µg/mL) and LC50 (63.17 µg/mL) compared with those of tumoral cell lines, indicating that the RA does that reduced cell viability of tumoral cell lines were not toxic for the normal cell line.

#### **Functional analysis for cholangiocarcinoma cell lines treated with RA**

Based on the results from the cell viability assay, RA at a dose of 13 µg/mL that reduced about 25% cell viability was chosen to use in subsequent experiments. The wound healing (Figure 2A-D) and Transwell migration (Figure 3A) assays were conducted to test the migration ability of the two cholangiocarcinoma cell lines RBE and LIPF155C. The results revealed that the migration ability of both lines was impaired by 13 µg/mL RA. In addition, clonogenic assay results indicated that RA reduced colony formation capability of the two cholangiocarcinoma cell lines (Figure 3B).

#### **Effects of RA on 5-Fu effectiveness in cholangiocarcinoma cell lines**

Chemoresistance is currently one of the major issues for therapy of bile duct cancer. Thus, the effects of RA on 5-Fu effectiveness were evaluated by using the combination of RA (13 µg/mL) and different increasing doses of 5-Fu, a common proapoptotic compound, in RBE and LIPF155C lines. RA was found to sensitize both tumoral cell lines (Figure 4A and B), namely, greatly reduced the EC50 (about 2-fold) and LC50 (more than 3-fold) (Figure 4C). Clonogenic assays revealed that 5-Fu displayed more potent roles to reduce cell colony formation compared with RA; however, RA was able to enhance such inhibitory effect of 5-Fu in both cell lines compared with the effect of using 5-FU alone (Figure 4D and E).

#### **Effects of RA on 5-Fu-resistant cell line RBE/5-Fu**

Hoechst staining assay was performed to evaluate the effects of RA on 5-Fu-resistant cell line RBE/5-Fu (Figure 5A and B). RBE/5-Fu (50 µmol/L) cells were treated with 13 µg/mL RA and the results suggested that either RA or 5-Fu promoted cell death. Furthermore, the effects of the combination of both were more potent than those of each one.

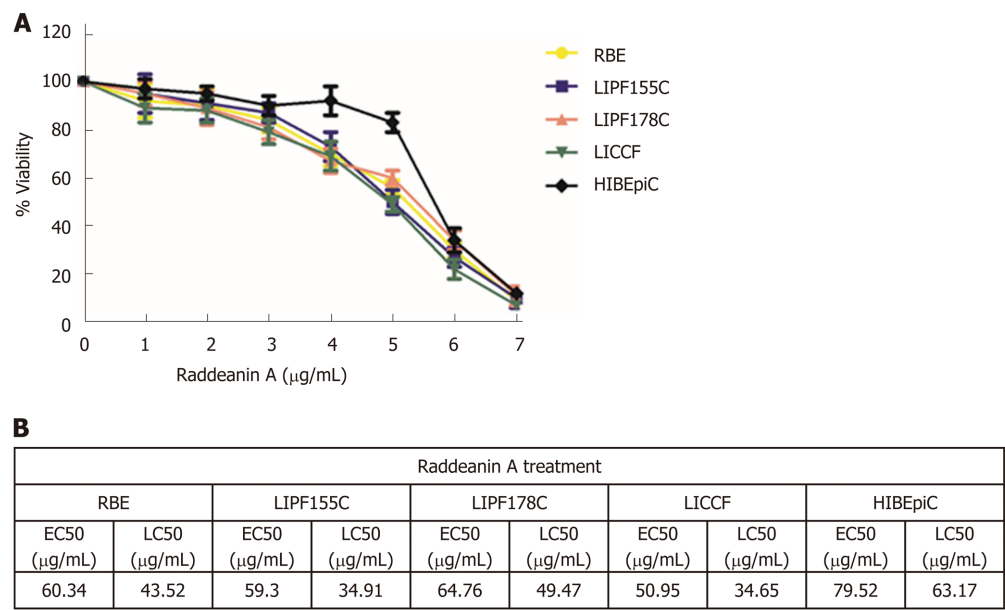
#### **Effects of RA on cell cycle- and apoptosis-related protein expression**

The RBE cell line was treated with 13 µg/mL RA for 48 h and cell cycle- and apoptosis-related protein expression was detected by Western blot (Figure 6A-D). Compared with the control group, RA treatment only decreased Wee1 protein level while 5-Fu treatment alone reduced Cox-2 and Bcl-2 expression and increased Bax and cyclin D1 protein expression. RA treatment combined with 5-Fu decreased protein expression of Cox-2, Bcl-2, and Wee1 whereas increased protein levels of Bax, cyclin D1, and cyclin E. 5-Fu treatment was associated with a lower protein level of Cox-2 and higher Wee1 expression compared with the effect of RA.

## **DISCUSSION**

As a malignant cancer of the biliary tract, there are still limited precise diagnosis and effective therapy for bile duct cancer<sup>[24]</sup>, although the incidence and mortality rates of bile duct cancer are increasing in recent years<sup>[25]</sup>. Therefore, there is an urgent demand to seek a novel strategy to improve diagnostic efficiency and therapeutic effect. RA has been demonstrated to play cytotoxic roles in various tumor cell lines *via* initiating apoptosis and impairing the cell cycle<sup>[6]</sup>. In our study, the cell viability, migration, and colony formation abilities in four cholangiocarcinoma cell lines were significantly reduced by RA treatment. Also, RA was found to sensitize the 5-Fu treated tumoral cell lines as well as facilitate apoptosis of 5-Fu-resistant cell line. Further Western blot results revealed that Wee1 expression level was dampened by RA (13 µg/mL) treatment and that the combinational effects of RA (13 µg/mL) and 5-Fu (35 µM) were associated with a group of cell cycle- and apoptosis-related factors. The results collectively suggest that the anti-bile duct cancer effects of RA may involve a series of regulatory mechanisms on the cell proliferation and apoptosis.

Wee1, a member of the family of protein kinases, is related to the regulation of G<sub>2</sub> checkpoint in response to DNA damage<sup>[26,27]</sup>. Increasing evidence in recent years demonstrates that the overexpression of Wee1 kinase is associated with various malignancies, such as breast cancer<sup>[28]</sup>, hepatocellular carcinoma<sup>[13]</sup>, and malignant melanoma<sup>[16]</sup>. In this study, RA treatment was found to be related to decreased Wee1 protein level in RBE cell line, which indicates that the effects of RA potentially relies



**Figure 1** Effects of raddeanin A on cholangiocarcinoma cell lines (*n* = 3 independent experiments). A: Increasing concentrations of raddeanin A (RA) were administered to cholangiocarcinoma cell lines for 24 h before being analyzed by the ATPlite assay. The percentage cell viability normalized to control is shown and data are expressed as the mean ± standard deviation; B: The half-maximal effective concentration and the half-maximal lethal concentration values for cholangiocarcinoma cell lines treated with RA. RA: Raddeanin A; EC50: Half-maximal effective concentration; LC50: Half-maximal lethal concentration.

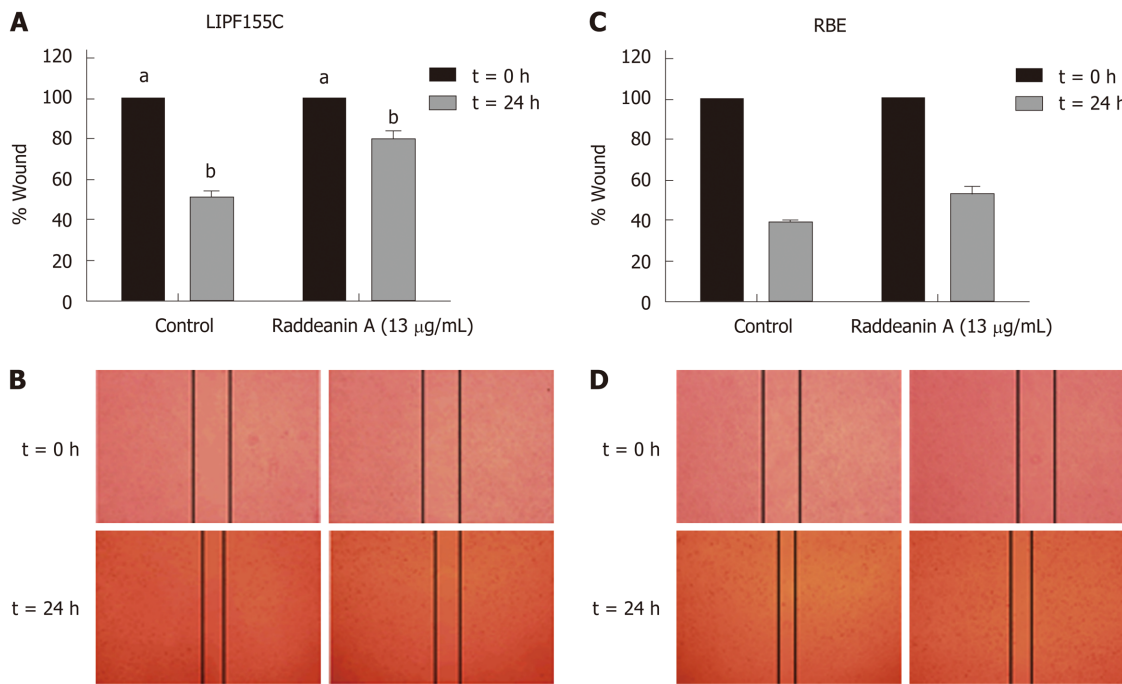
on the Wee1-dependent mechanism. Downregulation of Wee1 has been reported to contribute to the apoptosis of ovarian tumor<sup>[29]</sup> and neuroblastoma cells<sup>[30]</sup>. In particular, the checkpoint in the cell cycle is an important self-check mechanism to terminate the cell cycle process in response to DNA damage<sup>[27]</sup>. Despite DNA damage, the down-regulated Wee1 expression in tumor cells plays essential roles in maintaining cell proliferation *via* halting cell cycle arrest, thereby facilitating apoptosis and mitotic arrest during mitosis<sup>[27,31]</sup>. Collectively, RA-induced decreased cell viability and impaired cell functions in our study may result from the activation of Wee1 signaling that triggers apoptosis of cholangiocarcinoma cells.

5-Fu is a worldwide used chemotherapeutic treatment for many tumors, such as ovarian, breast, pancreatic, and colorectal cancers<sup>[32]</sup>. It has been well-documented that 5-Fu generates DNA damage through breaking DNA double-strand structure<sup>[33]</sup> and exerts anticancer effects *via* suppression of thymidylate synthase<sup>[34]</sup>. However, increasing reports revealed that the drug resistance has been becoming a significant limitation to the clinical application of 5-Fu in cancer treatment<sup>[34]</sup>, which was also observed in cholangiocarcinoma<sup>[35,36]</sup>. In this study, the results suggest that RA sensitized cholangiocarcinoma cell lines and also enhanced the anti-cancer effects of 5-Fu. Furthermore, the combinational effects of RA and 5-Fu were found to be associated with alterations of a group of the cell cycle and apoptosis protein expression, such as decreased expression of Cox-2, Bcl-2, and Wee1 and increased levels of Bax, cyclin D1, and cyclin E.

As an important inducible enzyme, Cox-2 has been demonstrated to be involved in angiogenesis and tumorigenesis<sup>[37]</sup>. Cox-2 expression can be activated by various factors, such as mitogens, oncogenes, as well as carcinogens<sup>[38]</sup>. Selective Cox-2 inhibitors, for example, rofecoxib and celecoxib, are capable of suppressing established tumor growth and preventing tumorigenesis<sup>[37,39]</sup>. The down-regulated expression of Cox-2 induced by the combinational treatment in this study suggests that cox-2 may play key roles in the inhibition of cholangiocarcinoma cell growth.

Mitochondrial apoptosis pathway is an important programmed cell death pathway<sup>[40]</sup> and involves a great number of morphological changes and pathological alterations, including cancers<sup>[41,42]</sup>. Activation of the mitochondrial apoptotic pathway causes alterations of mitochondrial membrane properties through the Bcl-2 family, including translocation of Bax and suppression of Bcl-2. Thus, Bax/bcl-2 ratio is widely used as a predictive marker for evaluation of cancer therapy<sup>[43,44]</sup>. In this study, RA treatment in cholangiocarcinoma cell lines is associated with increased Bax/Bcl-2 ratio, namely, increased Bax and decreased bcl-2 level, which is consistent with the findings from previous studies<sup>[4,45]</sup>. The results indicate that the mitochondrial apoptosis pathway may be involved in the anti-tumor effects of RA in bile duct





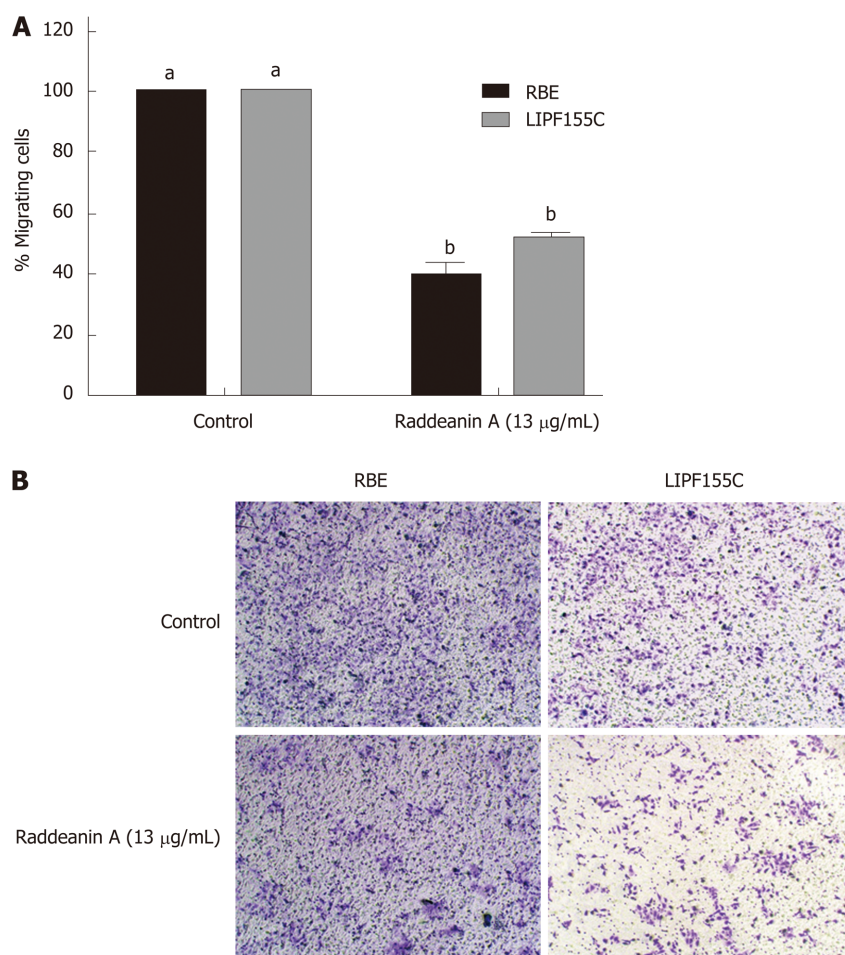
**Figure 2** Wound healing assay of RBE and LIPF155C cell lines treated with raddeanin A (13 µg/mL) ( $n = 3$  independent experiments). A and C: The percentage of wound width normalized to the controls is shown and data are expressed as the mean  $\pm$  standard deviation. Unique letters shared by the bars suggest significant differences between groups and  $P < 0.05$  was regarded to be statistically significant; B and D: Representative histograms for the percentage of wound width.

cancer.

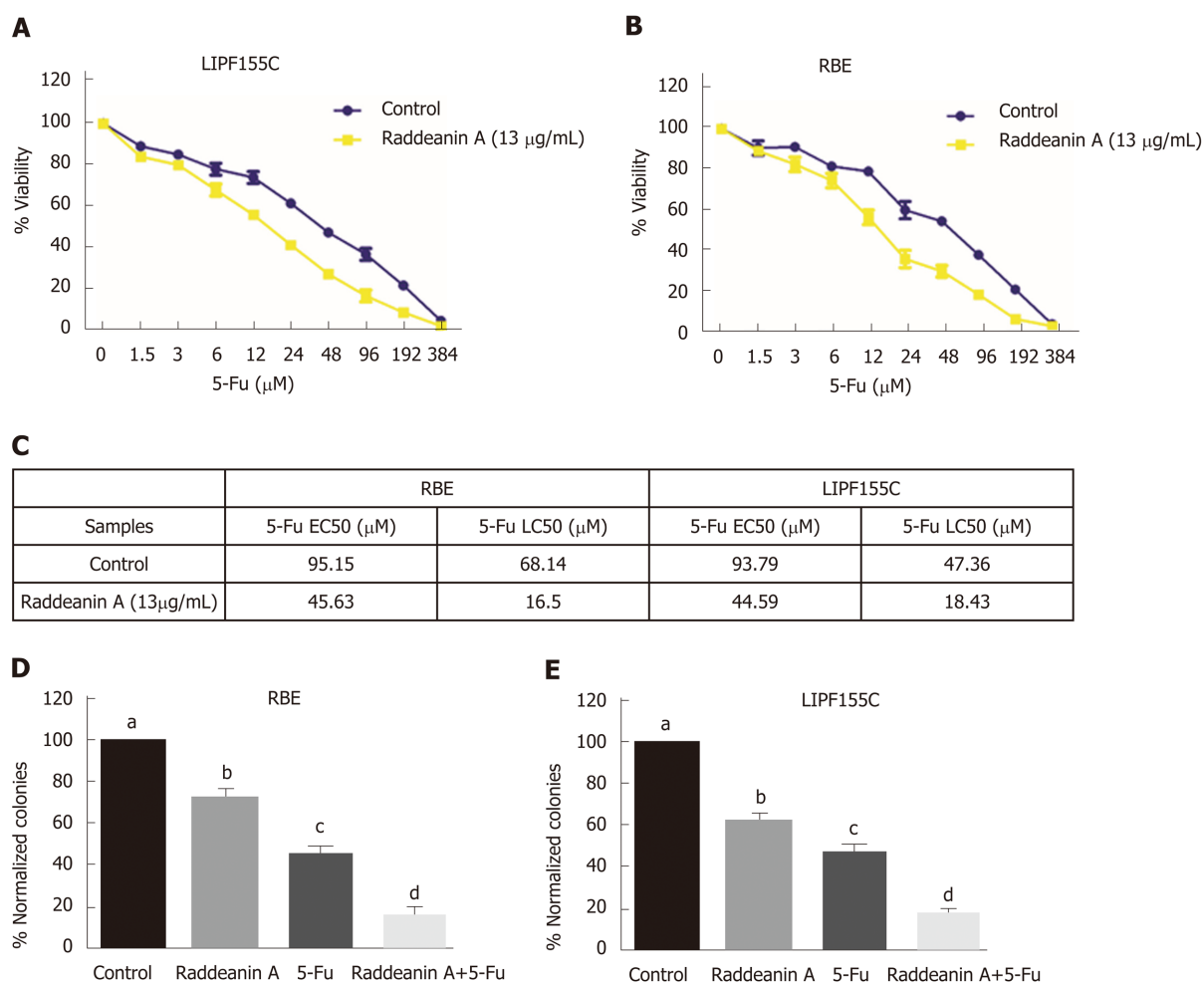
In addition to apoptosis, the cell cycle was also found to be related to the effects of RA on the cholangiocarcinoma cell lines in this study. It is well-studied that cell cycle progression is associated with sophisticated molecular and cellular cascades<sup>[46]</sup> and participates in the development of various types of cancer<sup>[27]</sup>. During these processes, the cyclin family and their catalytic subunits cyclin-dependent kinases form a series of molecular complexes in every phase of the cell cycle to regulate this complicated cell cycle progression<sup>[27]</sup>. The cyclin D-Cdk4/6-cyclin E-Cdk2 signaling pathway plays an essential role in G<sub>1</sub>-S transition and the response to DNA damage<sup>[47,48]</sup>. Some evidence reveals that increased cyclins E and D1 protein levels are highly related to the initiation of apoptosis and sensitization to radiation in tumor cells<sup>[49,50]</sup>, suggesting that increased cyclin E and D1 may act as proapoptotic factors in cholangiocarcinoma cells simultaneously treated with RA and 5-Fu.

In conclusion, our results suggest that RA treatment causes increased apoptosis and impaired cell functions in cholangiocarcinoma cell lines *via* a Wee1-dependent mechanism and that RA is an enhancer of 5-Fu in bile duct cancer through activating multiple cell cycle and apoptosis-related factors, such as Cox-2, Bax, Bcl-2, and cyclins E/D1. These findings together indicate that RA is a potential novel therapeutic treatment for bile duct cancer.

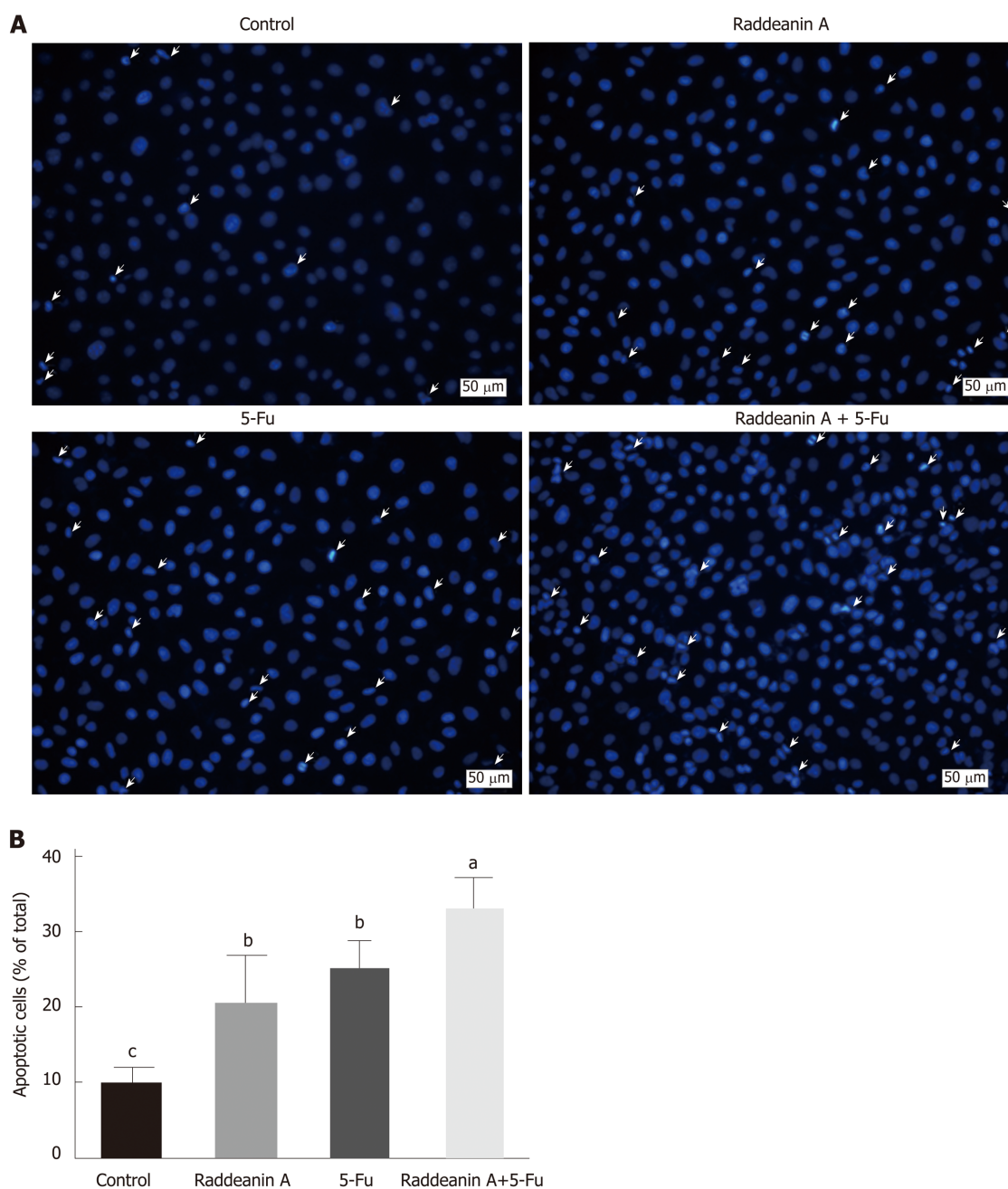




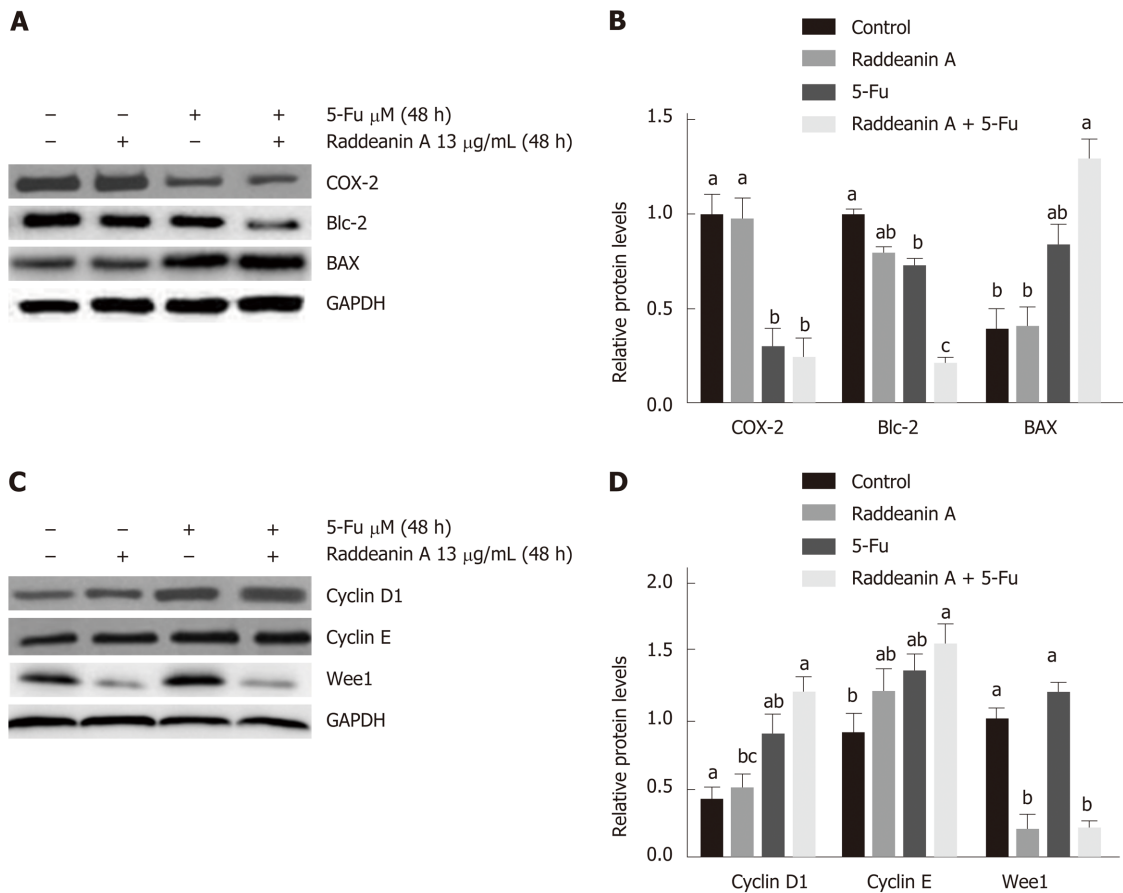
**Figure 3** Transwell migration and clonogenic assays of RBE and LIPF155C cell lines treated with raddeanin (13 µg/mL) ( $n = 3$  independent experiments). A: The percentage of migration cells normalized to the controls are shown and data are expressed as the mean  $\pm$  standard deviation. Unique letters shared by the bars suggest significant differences between groups and  $P < 0.05$  was regarded to be statistically significant; B: Representative histograms for cell colony formation.



**Figure 4** Effects of raddeanin A on 5-fluorouracil effectiveness in RBE and LIPF155C cell lines. A and B: RBE and LIPF155C cell lines treated with either control or raddeanin A (13 μg/mL) in combination with increasing doses of 5-Fu; C: The half-maximal effective concentration (EC50) and half-maximal lethal concentration values for RBE and LIPF155C cell lines; D and E: The cell colony formation ability in RBE and LIPF155C cell lines. Unique letters shared by the bars suggest significant differences between groups and  $P < 0.05$  was regarded to be statistically significant. 5-Fu: 5-fluorouracil.



**Figure 5 Effects of raddeanin A on 5-fluorouracil cell line RBE/5-Fu.** A: Representative graphs for apoptotic RBE/5-Fu cells treated with 13  $\mu\text{g/mL}$  raddeanin A; B: The percentage of apoptotic cells is shown and data are expressed as the mean  $\pm$  standard deviation. Unique letters shared by the bars suggest significant differences between groups and  $P < 0.05$  was regarded to be statistically significant. 5-Fu: 5-fluorouracil.



**Figure 6** Effects of raddeanin A on cell cycle- and apoptosis-related protein expression in RBE cell line treated with 13  $\mu\text{g/mL}$  raddeanin A for 48 h. A and B: Apoptosis-related protein expression detected by Western blot; C and D: Cell cycle-related protein expression detected by Western blot. Data are expressed as the mean  $\pm$  standard deviation. Unique letters shared by the bars suggest significant differences between groups and  $P < 0.05$  was regarded to be statistically significant. RA: Raddeanin A; 5-Fu: 5-fluorouracil; COX-2: Cyclooxygenase-2.

## ARTICLE HIGHLIGHTS

### Research background

Bile duct cancer is characterized by fast metastasis and invasion and has been thought of as aggressive cancer due to the lack of effective diagnosis at an early stage. The 5-year survival rate of bile duct cancer has not substantially improved in clinical practice. In addition, it is reported that 5-fluorouracil (5-Fu) has been widely applied in treatments for various cancers, achieving a great therapeutic effect. Furthermore, raddeanin A (RA) plays essential proapoptotic roles in various types of tumor cells.

### Research motivation

Exploring and developing effective diagnostic ways and therapies for bile duct cancer is greatly urgent for both basic science and clinical management.

### Research objectives

The objective of this study was to determine the effects of RA on bile duct cancer cells and the underlying mechanisms.

### Research methods

In this study, RA at different concentrations was administered to four cholangiocarcinoma cell lines (RBE, LIPF155C, LIPF178C, and LICCF). Cell viability, Wound-healing migration, Transwell invasion, and Hoechst staining assays were performed to evaluate cell activities. Western blot analysis was performed to the apoptosis-related pathway.

### Research results

RA inhibited cell viability in a dose-dependent pattern in the four cell lines. In RBE and LIPF155C cell lines, the migration and colony formation abilities were impaired by RA. Also, RA sensitized cell lines to 5-Fu treatment, promoting the effects of 5-Fu in cholangiocarcinoma cell lines. The role of RA was associated with reduced Wee1 expression. Furthermore, the combinational effect of RA and 5-Fu led to the inhibition of cyclooxygenase-2, B cell lymphoma

2, and Wee1 as well as the elevation of Bax, cyclin D1, and cyclin E.

### Research conclusions

RA administration could effectively regulate apoptosis and cell functions in cholangiocarcinoma cell lines in a Wee1-dependent pattern and promote the effect of 5-Fu in bile duct cancer. Collectively, RA is a promising treatment for bile duct cancer.

### Research perspectives

This study was aimed to provide clues to the application of RA for the therapy of bile duct cancer.

## REFERENCES

- Doherty B, Nambudiri VE, Palmer WC. Update on the Diagnosis and Treatment of Cholangiocarcinoma. *Curr Gastroenterol Rep* 2017; **19**: 2 [PMID: 28110453 DOI: 10.1007/s11894-017-0542-4]
- Ishigami K, Noshio K, Koide H, Kanno S, Mitsuhashi K, Igarashi H, Shitani M, Motoya M, Kimura Y, Hasegawa T, Kaneto H, Takemasa I, Suzuki H, Nakase H. MicroRNA-31 reflects IL-6 expression in cancer tissue and is related with poor prognosis in bile duct cancer. *Carcinogenesis* 2018; **39**: 1127-1134 [PMID: 29860474 DOI: 10.1093/carcin/bgy075]
- Blechacz B. Cholangiocarcinoma: Current Knowledge and New Developments. *Gut Liver* 2017; **11**: 13-26 [PMID: 27928095 DOI: 10.5009/gnl15568]
- Xue G, Zou X, Zhou JY, Sun W, Wu J, Xu JL, Wang RP. Raddeanin A induces human gastric cancer cells apoptosis and inhibits their invasion in vitro. *Biochem Biophys Res Commun* 2013; **439**: 196-202 [PMID: 23988447 DOI: 10.1016/j.bbrc.2013.08.060]
- Wang MK, Ding LS, Wu FE. [Antitumor effects of raddeanin A on S180, H22 and U14 cell xenografts in mice]. *Ai Zheng* 2008; **27**: 910-913 [PMID: 18799026 DOI: 10.1016/j.coi.2007.11.005]
- Wang Y, Bao X, Zhao A, Zhang J, Zhang M, Zhang Q, Ma B. Raddeanin A inhibits growth and induces apoptosis in human colorectal cancer through downregulating the Wnt/ $\beta$ -catenin and NF- $\kappa$ B signaling pathway. *Life Sci* 2018; **207**: 532-549 [PMID: 29972765 DOI: 10.1016/j.lfs.2018.06.035]
- Wang Q, Mo J, Zhao C, Huang K, Feng M, He W, Wang J, Chen S, Xie Z, Ma J, Fan S. Raddeanin A suppresses breast cancer-associated osteolysis through inhibiting osteoclasts and breast cancer cells. *Cell Death Dis* 2018; **9**: 376 [PMID: 29515110 DOI: 10.1038/s41419-018-0417-0]
- Rhim AD, Mirek ET, Aiello NM, Maitra A, Bailey JM, McAllister F, Reichert M, Beatty GL, Rustgi AK, Vonderheide RH, Leach SD, Stanger BZ. EMT and dissemination precede pancreatic tumor formation. *Cell* 2012; **148**: 349-361 [PMID: 22265420 DOI: 10.1016/j.cell.2011.11.025]
- Ghosh N, Chaki R, Mandal V, Mandal SC. COX-2 as a target for cancer chemotherapy. *Pharmacol Rep* 2010; **62**: 233-244 [PMID: 20508278 DOI: 10.1016/S1734-1140(10)70262-0]
- Khan Z, Khan N, Tiwari RP, Sah NK, Prasad GB, Bisen PS. Biology of Cox-2: An application in cancer therapeutics. *Curr Drug Targets* 2011; **12**: 1082-1093 [PMID: 21443470 DOI: 10.2174/138945011795677764]
- Malumbres M, Barbacid M. Cell cycle, CDKs and cancer: A changing paradigm. *Nat Rev Cancer* 2009; **9**: 153-166 [PMID: 19238148 DOI: 10.1038/nrc2602]
- Landis MW, Pawlyk BS, Li T, Sicinski P, Hinds PW. Cyclin D1-dependent kinase activity in murine development and mammary tumorigenesis. *Cancer Cell* 2006; **9**: 13-22 [PMID: 16413468 DOI: 10.1016/j.ccr.2005.12.019]
- Bani-Hani KE, Almasri NM, Khader YS, Sheyab FM, Karam HN. Combined evaluation of expressions of cyclin E and p53 proteins as prognostic factors for patients with gastric cancer. *Clin Cancer Res* 2005; **11**: 1447-1453 [PMID: 15746045 DOI: 10.1158/1078-0432.CCR-04-1730]
- De Witt Hamer PC, Mir SE, Noske D, Van Noorden CJ, Würdinger T. WEE1 kinase targeting combined with DNA-damaging cancer therapy catalyzes mitotic catastrophe. *Clin Cancer Res* 2011; **17**: 4200-4207 [PMID: 21562035 DOI: 10.1158/1078-0432.CCR-10-2537]
- Masaki T, Shiratori Y, Rengifo W, Igarashi K, Yamagata M, Kurokohchi K, Uchida N, Miyauchi Y, Yoshiji H, Watanabe S, Omata M, Kuriyama S. Cyclins and cyclin-dependent kinases: Comparative study of hepatocellular carcinoma versus cirrhosis. *Hepatology* 2003; **37**: 534-543 [PMID: 12601350 DOI: 10.1053/jhep.2003.50112]
- Mir SE, De Witt Hamer PC, Krawczyk PM, Balaj L, Claes A, Niers JM, Van Tilborg AA, Zwiderman AH, Geerts D, Kaspers GJ, Peter Vandertop W, Cloos J, Tannous BA, Wesseling P, Aten JA, Noske DP, Van Noorden CJ, Würdinger T. In silico analysis of kinase expression identifies WEE1 as a gatekeeper against mitotic catastrophe in glioblastoma. *Cancer Cell* 2010; **18**: 244-257 [PMID: 20832752 DOI: 10.1016/j.ccr.2010.08.011]
- Yu J, Zhang L. Apoptosis in human cancer cells. *Curr Opin Oncol* 2004; **16**: 19-24 [PMID: 14685088 DOI: 10.1097/00001622-200401000-00005]
- Jin Z, El-Deiry WS. Overview of cell death signaling pathways. *Cancer Biol Ther* 2005; **4**: 139-163 [PMID: 15725726 DOI: 10.4161/cbt.4.2.1508]
- Ashkenazi A, Fairbrother WJ, Levenson JD, Souers AJ. From basic apoptosis discoveries to advanced selective BCL-2 family inhibitors. *Nat Rev Drug Discov* 2017; **16**: 273-284 [PMID: 28209992 DOI: 10.1038/nrd.2016.253]
- González-Vallinas M, Molina S, Vicente G, de la Cueva A, Vargas T, Santoyo S, García-Risco MR, Fornari T, Reglero G, Ramírez de Molina A. Antitumor effect of 5-fluorouracil is enhanced by rosemary extract in both drug sensitive and resistant colon cancer cells. *Pharmacol Res* 2013; **72**: 61-68 [PMID: 23557932 DOI: 10.1016/j.phrs.2013.03.010]
- Subbarayan PR, Lee K, Ardalan B. Arsenic trioxide suppresses thymidylate synthase in 5-FU-resistant colorectal cancer cell line HT29 In Vitro re-sensitizing cells to 5-FU. *Anticancer Res* 2010; **30**: 1157-1162 [PMID: 20530422 DOI: 10.1097/CAD.0b013e328335be46]
- Pulito C, Mori F, Sacconi A, Goeman F, Ferraiuolo M, Pisanis P, Campagnoli C, Berrino F, Fanciulli M, Ford RJ, Levrero M, Pediconi N, Ciuffreda L, Milella M, Steinberg GR, Ciocci M, Muti P, Strano S, Blandino G. Metformin-induced ablation of microRNA 21-5p releases Sestrin-1 and CAB39L antitumoral activities. *Cell Discov* 2017; **3**: 17022 [PMID: 28698800 DOI: 10.1038/celldisc.2017.22]



- 23 **Zheng XT**, Wu ZH, Wei Y, Dai JJ, Yu GF, Yuan F, Ye LC. Induction of autophagy by salidroside through the AMPK-mTOR pathway protects vascular endothelial cells from oxidative stress-induced apoptosis. *Mol Cell Biochem* 2017; **425**: 125-138 [PMID: [27848074](#) DOI: [10.1007/s11010-016-2868-x](#)]
- 24 **Blechacz B**, Gores GJ. Cholangiocarcinoma: Advances in pathogenesis, diagnosis, and treatment. *Hepatology* 2008; **48**: 308-321 [PMID: [18536057](#) DOI: [10.1002/hep.22310](#)]
- 25 **Lazaridis KN**, Gores GJ. Cholangiocarcinoma. *Gastroenterology* 2005; **128**: 1655-1667 [PMID: [15887157](#) DOI: [10.1053/j.gastro.2005.03.040](#)]
- 26 **Do K**, Doroshow JH, Kummar S. Wee1 kinase as a target for cancer therapy. *Cell Cycle* 2013; **12**: 3159-3164 [PMID: [24013427](#) DOI: [10.4161/cc.26062](#)]
- 27 **Otto T**, Sicinski P. Cell cycle proteins as promising targets in cancer therapy. *Nat Rev Cancer* 2017; **17**: 93-115 [PMID: [28127048](#) DOI: [10.1038/nrc.2016.138](#)]
- 28 **Iorns E**, Lord CJ, Grigoriadis A, McDonald S, Fenwick K, Mackay A, Mein CA, Natrajan R, Savage K, Tamber N, Reis-Filho JS, Turner NC, Ashworth A. Integrated functional, gene expression and genomic analysis for the identification of cancer targets. *PLoS One* 2009; **4**: e5120 [PMID: [19357772](#) DOI: [10.1371/journal.pone.0005120](#)]
- 29 **Wang F**, Zhu Y, Huang Y, McAvoy S, Johnson WB, Cheung TH, Chung TK, Lo KW, Yim SF, Yu MM, Ngan HY, Wong YF, Smith DI. Transcriptional repression of WEE1 by Kruppel-like factor 2 is involved in DNA damage-induced apoptosis. *Oncogene* 2005; **24**: 3875-3885 [PMID: [15735666](#) DOI: [10.1038/sj.onc.1208546](#)]
- 30 **Creevey L**, Ryan J, Harvey H, Bray IM, Meehan M, Khan AR, Stallings RL. MicroRNA-497 increases apoptosis in MYCN amplified neuroblastoma cells by targeting the key cell cycle regulator WEE1. *Mol Cancer* 2013; **12**: 23 [PMID: [23531080](#) DOI: [10.1186/1476-4598-12-23](#)]
- 31 **Hirai H**, Arai T, Okada M, Nishibata T, Kobayashi M, Sakai N, Imagaki K, Ohtani J, Sakai T, Yoshizumi T, Mizuarai S, Iwasawa Y, Kotani H. MK-1775, a small molecule Wee1 inhibitor, enhances anti-tumor efficacy of various DNA-damaging agents, including 5-fluorouracil. *Cancer Biol Ther* 2010; **9**: 514-522 [PMID: [20107315](#) DOI: [10.4161/cbt.9.7.11115](#)]
- 32 **Pinedo HM**, Peters GF. Fluorouracil: Biochemistry and pharmacology. *J Clin Oncol* 1988; **6**: 1653-1664 [PMID: [3049954](#) DOI: [10.1200/JCO.1988.6.10.1653](#)]
- 33 **De Angelis PM**, Svendsrud DH, Kravik KL, Stokke T. Cellular response to 5-fluorouracil (5-FU) in 5-FU-resistant colon cancer cell lines during treatment and recovery. *Mol Cancer* 2006; **5**: 20 [PMID: [16709241](#) DOI: [10.1186/1476-4598-5-20](#)]
- 34 **Longley DB**, Harkin DP, Johnston PG. 5-fluorouracil: Mechanisms of action and clinical strategies. *Nat Rev Cancer* 2003; **3**: 330-338 [PMID: [12724731](#) DOI: [10.1038/nrc1074](#)]
- 35 **Wu WR**, Zhang R, Shi XD, Zhu MS, Xu LB, Zeng H, Liu C. Notch1 is overexpressed in human intrahepatic cholangiocarcinoma and is associated with its proliferation, invasiveness and sensitivity to 5-fluorouracil in vitro. *Oncol Rep* 2014; **31**: 2515-2524 [PMID: [24700253](#) DOI: [10.3892/or.2014.3123](#)]
- 36 **Lim JH**, Ryu JK, Choi YJ, Kwon J, Kim JY, Lee YB, Kim JH, Yoon WJ, Kim YT, Yoon YB. A Case of Common Bile Duct Cancer That Completely Responded to Combination Chemotherapy of Gemcitabine and TS-1. *Gut Liver* 2013; **7**: 371-376 [PMID: [23710321](#) DOI: [10.5009/gnl.2013.7.3.371](#)]
- 37 **Leahy KM**, Ornberg RL, Wang Y, Zweifel BS, Koki AT, Masferrer JL. Cyclooxygenase-2 inhibition by celecoxib reduces proliferation and induces apoptosis in angiogenic endothelial cells in vivo. *Cancer Res* 2002; **62**: 625-631 [PMID: [11830509](#) DOI: [10.1097/00002820-200202000-00013](#)]
- 38 **Soslow RA**, Dannenberg AJ, Rush D, Woerner BM, Khan KN, Masferrer J, Koki AT. COX-2 is expressed in human pulmonary, colonic, and mammary tumors. *Cancer* 2000; **89**: 2637-2645 [PMID: [11135226](#) DOI: [10.1002/1097-0142\(20001215\)89:12<2637::AID-CNCR17>3.0.CO;2-B](#)]
- 39 **Harris RE**, Alshafie GA, Abou-Issa H, Seibert K. Chemoprevention of breast cancer in rats by celecoxib, a cyclooxygenase 2 inhibitor. *Cancer Res* 2000; **60**: 2101-2103 [PMID: [10786667](#) DOI: [10.1016/S0165-4608\(99\)00201-0](#)]
- 40 **Igney FH**, Krammer PH. Death and anti-death: Tumour resistance to apoptosis. *Nat Rev Cancer* 2002; **2**: 277-288 [PMID: [12001989](#) DOI: [10.1038/nrc776](#)]
- 41 **Pujals A**, Renouf B, Robert A, Chelouah S, Hollville E, Wiels J. Treatment with a BH3 mimetic overcomes the resistance of latency III EBV (+) cells to p53-mediated apoptosis. *Cell Death Dis* 2011; **2**: e184 [PMID: [21796156](#) DOI: [10.1038/cddis.2011.67](#)]
- 42 **Gobé G**, Rubin M, Williams G, Sawczuk I, Buttyan R. Apoptosis and expression of Bcl-2, Bcl-XL, and Bax in renal cell carcinomas. *Cancer Invest* 2002; **20**: 324-332 [PMID: [12025227](#) DOI: [10.1081/CNV-120001177](#)]
- 43 **Sakinah SA**, Handayani ST, Hawariah LP. Zerumbone induced apoptosis in liver cancer cells via modulation of Bax/Bcl-2 ratio. *Cancer Cell Int* 2007; **7**: 4 [PMID: [17407577](#) DOI: [10.1186/1475-2867-7-4](#)]
- 44 **Mackey TJ**, Borkowski A, Amin P, Jacobs SC, Kyprianou N. bcl-2/bax ratio as a predictive marker for therapeutic response to radiotherapy in patients with prostate cancer. *Urology* 1998; **52**: 1085-1090 [PMID: [9836559](#) DOI: [10.1016/S0090-4295\(98\)00360-4](#)]
- 45 **Teng YH**, Li JP, Liu SL, Zou X, Fang LH, Zhou JY, Wu J, Xi SY, Chen Y, Zhang YY, Xu S, Wang RP. Autophagy Protects from Raddeanin A-Induced Apoptosis in SGC-7901 Human Gastric Cancer Cells. *Evid Based Complement Alternat Med* 2016; **2016**: 9406758 [PMID: [27974905](#) DOI: [10.1155/2016/9406758](#)]
- 46 **Shapiro GI**. Cyclin-dependent kinase pathways as targets for cancer treatment. *J Clin Oncol* 2006; **24**: 1770-1783 [PMID: [16603719](#) DOI: [10.1200/JCO.2005.03.7689](#)]
- 47 **Sears RC**, Nevins JR. Signaling networks that link cell proliferation and cell fate. *J Biol Chem* 2002; **277**: 11617-11620 [PMID: [11805123](#) DOI: [10.1074/jbc.R100063200](#)]
- 48 **Bartek J**, Lukas J. Pathways governing G1/S transition and their response to DNA damage. *FEBS Lett* 2001; **490**: 117-122 [PMID: [11223026](#) DOI: [10.1016/S0014-5793\(01\)02114-7](#)]
- 49 **Coco Martin JM**, Balkenende A, Verschoor T, Lallemand F, Michalides R. Cyclin D1 overexpression enhances radiation-induced apoptosis and radiosensitivity in a breast tumor cell line. *Cancer Res* 1999; **59**: 1134-1140 [PMID: [10070974](#)]
- 50 **Mazumder S**, DuPree EL, Almasan A. A dual role of cyclin E in cell proliferation and apoptosis may provide a target for cancer therapy. *Curr Cancer Drug Targets* 2004; **4**: 65-75 [PMID: [14965268](#) DOI: [10.2174/1568009043481669](#)]





Published By Baishideng Publishing Group Inc  
7041 Koll Center Parkway, Suite 160, Pleasanton, CA 94566, USA  
Telephone: +1-925-2238242  
Fax: +1-925-2238243  
E-mail: [bpgoffice@wjgnet.com](mailto:bpgoffice@wjgnet.com)  
Help Desk: <http://www.f6publishing.com/helpdesk>  
<http://www.wjgnet.com>

