

World Journal of *Gastrointestinal Oncology*

World J Gastrointest Oncol 2019 December 15; 11(12): 1092-1239



**OPINION REVIEW**

- 1092** Observation or resection of pancreatic intraductal papillary mucinous neoplasm: An ongoing tug of war
Aunan JR, Jamieson NB, Søreide K

MINIREVIEW

- 1101** Current status of the genetic susceptibility in attenuated adenomatous polyposis
Lorca V, Garre P

ORIGINAL ARTICLE**Basic Study**

- 1115** Improved method for inducing chronic atrophic gastritis in mice
Wei X, Feng XP, Wang LY, Huang YQ, Liang LL, Mo XQ, Wei HY

Case Control Study

- 1126** Relationship between cachexia and perineural invasion in pancreatic adenocarcinoma
Petrusel L, Rusu I, Leucuta DC, Seicean R, Suharoschi R, Zamfir P, Seicean A
- 1141** Protein expression trends of DNMT1 in gastrointestinal diseases: From benign to precancerous lesions to cancer
Ma TM, Sun LP, Dong NN, Sun MJ, Yuan Y

Retrospective Study

- 1151** Asian Americans have better outcomes of non-metastatic gastric cancer compared to other United States racial groups: A secondary analysis from a randomized study
Abdel-Rahman O
- 1161** Gastric partitioning for the treatment of malignant gastric outlet obstruction
Ramos MFKP, Barchi LC, de Oliveira RJ, Pereira MA, Mucerino DR, Ribeiro Jr U, Zilberstein B, Cecconello I
- 1172** Difference in failure patterns of pT3-4N0-3M0 esophageal cancer treated by surgery *vs* surgery plus radiotherapy
Zeng Y, Yu W, Liu Q, Yu WW, Zhu ZF, Zhao WX, Liu J, Wang JM, Fu XL, Liu Y, Cai XW

Observational Study

- 1182** Impact of regular enteral feeding *via* jejunostomy during neo-adjuvant chemotherapy on body composition in patients with oesophageal cancer
Mohamed IM, Whiting J, Tan BH

- 1193** Multi-parameter ultrasound based on the logistic regression model in the differential diagnosis of hepatocellular adenoma and focal nodular hyperplasia
Wu M, Zhou RH, Xu F, Li XP, Zhao P, Yuan R, Lan YP, Zhou WX

- 1206** Analysis of factors potentially predicting prognosis of colorectal cancer
Jin LJ, Chen WB, Zhang XY, Bai J, Zhao HC, Wang ZY

SYSTEMATIC REVIEWS

- 1218** Deep learning with convolutional neural networks for identification of liver masses and hepatocellular carcinoma: A systematic review
Azer SA

CASE REPORT

- 1231** Inflammatory pseudotumor-like follicular dendritic cell sarcoma: A brief report of two cases
Zhang BX, Chen ZH, Liu Y, Zeng YJ, Li YC

ABOUT COVER

Editorial Board Member of *World Journal of Gastrointestinal Oncology*, Paolo Aurello, MD, PhD, Professor, Surgeon, Department of General Surgery, Sapienza University of Rome, Rome 00162, Italy

AIMS AND SCOPE

The primary aim of *World Journal of Gastrointestinal Oncology* (WJGO, *World J Gastrointest Oncol*) is to provide scholars and readers from various fields of gastrointestinal oncology with a platform to publish high-quality basic and clinical research articles and communicate their research findings online.

WJGO mainly publishes articles reporting research results and findings obtained in the field of gastrointestinal oncology and covering a wide range of topics including islet cell adenoma, liver cell adenoma, adenomatous polyposis coli, appendiceal neoplasms, bile duct neoplasms, biliary tract neoplasms, hepatocellular carcinoma, islet cell carcinoma, pancreatic ductal carcinoma, cecal neoplasms, colonic neoplasms, colorectal neoplasms, hereditary nonpolyposis colorectal neoplasms, common bile duct neoplasms, duodenal neoplasms, esophageal neoplasms, gallbladder neoplasms, etc.

INDEXING/ABSTRACTING

The WJGO is now indexed in Science Citation Index Expanded (also known as SciSearch®), PubMed, and PubMed Central. The 2019 edition of Journal Citation Reports® cites the 2018 impact factor for WJGO as 2.758 (5-year impact factor: 3.220), ranking WJGO as 52 among 84 journals in gastroenterology and hepatology (quartile in category Q3), and 131 among 229 journals in oncology (quartile in category Q3).

RESPONSIBLE EDITORS FOR THIS ISSUE

Responsible Electronic Editor: *Lu-Lu Qi*
Proofing Production Department Director: *Yun-Xiaojuan Wu*

NAME OF JOURNAL

World Journal of Gastrointestinal Oncology

ISSN

ISSN 1948-5204 (online)

LAUNCH DATE

February 15, 2009

FREQUENCY

Monthly

EDITORS-IN-CHIEF

Monjur Ahmed, Rosa M Jimenez Rodriguez, Pashtoon Kasi

EDITORIAL BOARD MEMBERS

<https://www.wjgnet.com/1948-5204/editorialboard.htm>

EDITORIAL OFFICE

Jin-Lei Wang, Director

PUBLICATION DATE

December 15, 2019

COPYRIGHT

© 2019 Baishideng Publishing Group Inc

INSTRUCTIONS TO AUTHORS

<https://www.wjgnet.com/bpg/gerinfo/204>

GUIDELINES FOR ETHICS DOCUMENTS

<https://www.wjgnet.com/bpg/GerInfo/287>

GUIDELINES FOR NON-NATIVE SPEAKERS OF ENGLISH

<https://www.wjgnet.com/bpg/gerinfo/240>

PUBLICATION MISCONDUCT

<https://www.wjgnet.com/bpg/gerinfo/208>

ARTICLE PROCESSING CHARGE

<https://www.wjgnet.com/bpg/gerinfo/242>

STEPS FOR SUBMITTING MANUSCRIPTS

<https://www.wjgnet.com/bpg/GerInfo/239>

ONLINE SUBMISSION

<https://www.f6publishing.com>



Case Control Study

Relationship between cachexia and perineural invasion in pancreatic adenocarcinoma

Livia Petrusel, Ioana Rusu, Daniel Corneliu Leucuta, Radu Seicean, Ramona Suharoschi, Paula Zamfir, Andrada Seicean

ORCID number: Livia Petrusel (0000-0002-1385-3892); Ioana Rusu (0000-0001-9174-6729); Daniel Corneliu Leucuta (0000-0003-4218-8622); Radu Seicean (0000-0003-4519-2352); Ramona Suharoschi (0000-0002-8306-8670); Paula Zamfir (0000-0003-1461-9405); Andrada Seicean (0000-0002-5809-1334).

Author contributions: Petrusel L and Seicean A conceived and designed the study; Petrusel L, Rusu I, Seicean R, Suharoschi R and Zamfir P performed the research; Leucuta DC analysed data; Petrusel L and Seicean A wrote the paper.

Institutional review board statement: This study was reviewed and approved by the Ethics Committee of the Regional Institute of Gastroenterology and Hepatology in Cluj-Napoca.

Conflict-of-interest statement: The authors report no relevant conflicts of interest.

Data sharing statement: Participants gave written informed consent for data sharing.

STROBE statement: The authors have read the STROBE Statement, and the manuscript was prepared and revised according to the STROBE Statement.

Open-Access: This article is an open-access article which was selected by an in-house editor and fully peer-reviewed by external

Livia Petrusel, Andrada Seicean, Department of Gastroenterology, Regional Institute of Gastroenterology and Hepatology, Iuliu Hatieganu University of Medicine and Pharmacy, Cluj-Napoca 400162, Romania

Ioana Rusu, Paula Zamfir, Department of Pathology, Regional Institute of Gastroenterology and Hepatology, Iuliu Hatieganu University of Medicine and Pharmacy Cluj-Napoca, Cluj-Napoca 400162, Romania

Daniel Corneliu Leucuta, Medical Informatics and Biostatistics Department, Iuliu Hatieganu University of Medicine and Pharmacy Cluj-Napoca, Cluj-Napoca 400012, Romania

Radu Seicean, First Surgery Clinic, Iuliu Hatieganu University of Medicine and Pharmacy, Cluj-Napoca 400006, Romania

Ramona Suharoschi, Faculty of Food Science and Technology, University of Agricultural Sciences and Veterinary Medicine Cluj-Napoca, Cluj-Napoca 400372, Romania

Corresponding author: Livia Petrusel, MD, PhD, Doctor, Regional Institute of Gastroenterology and Hepatology, Iuliu Hatieganu University of Medicine and Pharmacy, 19-21 Croitorilor Street, Cluj-Napoca 400162, Romania. livia.cutas@umfcluj.ro
Telephone: +40-72-4402389

Abstract

BACKGROUND

Cachexia is responsible for the low quality of life in pancreatic adenocarcinoma (PDAC). The rapid disease progression and patient deterioration seems related to perineural invasion, but the relationship between cachexia and perineural invasion for the evolution of the disease has been rarely studied. As perineural invasion is difficult to be highlighted, a biomarker such as the neurotrophic factor Midkine (MK) which promotes the neuronal differentiation and the cell migration could be helpful. Also, Activin (ACV) has been described as cachexia related to PDAC. However, their role for assessing and predicting the disease course in daily practice is not known.

AIM

To assess the relationship between perineural invasion and cachexia and their biomarkers, MK and ACV, respectively, and their prognostic value.

METHODS

reviewers. It is distributed in accordance with the Creative Commons Attribution Non Commercial (CC BY-NC 4.0) license, which permits others to distribute, remix, adapt, build upon this work non-commercially, and license their derivative works on different terms, provided the original work is properly cited and the use is non-commercial. See: <http://creativecommons.org/licenses/by-nc/4.0/>

Manuscript source: Invited manuscript

Received: May 5, 2019

Peer-review started: May 8, 2019

First decision: July 31, 2019

Revised: September 9, 2019

Accepted: October 14, 2019

Article in press: October 14, 2019

Published online: December 15, 2019

P-Reviewer: Mastoraki A

S-Editor: Zhang L

L-Editor: A

E-Editor: Qi LL



This study included prospectively enrolled patients with proven adenocarcinoma and a matched group of controls without any malignancies. Patients with other causes of malnutrition were excluded. The plasma levels of ACV and MK were analyzed using western blotting and were correlated with the clinicopathological features and survival data. These results were validated by immunohistochemical analyses of the pancreatic tumor tissue of the patients included in the study and a supplementary group of surgically resected specimens from patients with a benign disease.

RESULTS

The study comprised 114 patients with PDAC, 125 controls and a supplementary group of 14 benign pancreatic tissue samples. ACV and MK were both overexpressed more frequently in the plasma of patients with PDAC than in the controls (63% *vs* 32% for ACV, $P < 0.001$; 47% *vs* 16% for MK, $P < 0.001$), with similar levels in pancreatic tissue the MK protein expression was closely related to the advanced clinical stage ($P = 0.006$), the presence of metastasis ($P = 0.04$), perineural invasion ($P = 0.03$) and diabetes ($P = 0.002$), but with no influence on survival. No correlation between clinicopathological factors and ACV expression was noted. Cachexia, present in 19% of patients, was unrelated to ACV or MK level. Higher ACV expression was associated with a shorter survival ($P = 0.008$).

CONCLUSION

The MK was a biomarker of perineural invasion, associated with tumor stage and diabetes, but without prognostic value as ACV. Cachexia was unrelated to perineural invasion, ACV level or survival.

Key words: Pancreatic adenocarcinoma; Cachexia; Perineural invasion; Activin; Midkine; Biomarker; Survival; Metastases; Endosonography; Surgery

©The Author(s) 2019. Published by Baishideng Publishing Group Inc. All rights reserved.

Core tip: Midkine (MK) is a neurotrophic factor that promotes perineural invasion in pancreatic cancer, neuronal differentiation and cell migration. Our results confirmed that high MK expression is closely correlated with perineural invasion and with advanced tumor stage, diabetes. No relationship with cachexia was found. Activin plays a dominant role in the development and progression of cachexia and in tumor cell growth in pancreatic adenocarcinoma, but this was not confirmed in this study, despite the association with poor survival.

Citation: Petrusel L, Rusu I, Leucuta DC, Seicean R, Suharoschi R, Zamfir P, Seicean A. Relationship between cachexia and perineural invasion in pancreatic adenocarcinoma. *World J Gastrointest Oncol* 2019; 11(12): 1126-1140

URL: <https://www.wjnet.com/1948-5204/full/v11/i12/1126.htm>

DOI: <https://dx.doi.org/10.4251/wjgo.v11.i12.1126>

INTRODUCTION

Pancreatic cancer is currently ranked on the 3rd place in cancer mortality, but is expected to reach the 2nd leading cause of cancer mortality in 2030^[1,2]. The unfavorable prognosis of PDAC can be attributed to late diagnosis and aggressive tumor biology, with a very low survival rate ($< 6\%$)^[2-4]. A major factor in the low survival rate is the presence of cachexia, which is seen in over 85% of patients with pancreatic cancer^[5-7] constituting the highest rate of cachexia in all malignancies.

Cancer cachexia is a complex syndrome, characterized by body-weight loss; muscle, skeleton and adipose tissue wasting; and inflammation, which is often associated with anorexia^[8,9].

Cachexia has become an obstacle for the successful treatment of cancer and may significantly contribute to cancer-related death.

The mechanism of cachexia involves the interaction host- tumor through TGF β via the SMAD2/3 pathway which can stimulate tumour growth and inhibits the muscle growth followed by myopenia through myostatin or activin pathway^[9,10] or insulin-

growth factor binding protein as part of IGF-1/PI3K/Akt signalling pathway with the inhibition of myogenesis and enhancing myotubule protein degradation^[9]. Another mechanism is related to hypercatabolism connected to the production of pro-inflammatory cytokines by the tumor, such as interleukin (IL)-1b, IL-6 and the tumor necrosis factor- α , both of which are involved in lipolysis with white adipose tissue wasting and early occurrence of brown fat tissue with high energy expenditure^[11,12], in muscle catabolism too^[9].

Astrocyte activation in the spinal cord induces lipolysis in the adipose tissue^[13] and muscle atrophy^[14,15] and is also involved in cachexia occurrence; this activation may result from the damage to peripheral nerves during perineural invasion in PDAC, with the hypertrophy and thickening of the nerve branches^[16,17], but their relationship is not completely understood. The cachexia was associated with the degree of neural invasion, known as responsible for the aggressive behaviour of pancreatic cancer^[18,19], with the involvement of the neurotrophic factors^[20], such as midkine. It promotes neuronal differentiation and cell migration in peripheral invasion of pancreatic cancer^[21]. Midkine was found to be overexpressed in many pancreatic cancers and may represent a target for chemoresistant patients^[22], but its relationship with cachexia has not been studied.

The main aim of this study was to determine the relationship between cachexia and perineural invasion in patients with PDAC by using clinico-pathological features and the protein expression levels of Activin and Midkine in plasma and tissue of patients compared to healthy patients. The secondary purpose was to assess the prognostic role of Activin and Midkine in survival and metastasis.

MATERIALS AND METHODS

Patients and sample collection

This study was performed at the Regional Institute of Gastroenterology and Hepatology "O. Fodor" in Cluj-Napoca, Romania. This study was prospectively performed and was approved by the Ethics Committee of the hospital and was registered at clinicaltrials.gov (NCT03042442).

Eligibility criteria

Subjects of the study group were at least 18-years-old, with no previous history of any other cancer in the last 5 years. Written consent was given prior to entry into the study. Patients with pancreatic ductal adenocarcinoma, based on the results of endoscopic ultrasonography (EUS), biopsy, or surgery, were enrolled at the time of diagnosis, before any therapeutic intervention had been given, from January 2015 to September 2017.

The exclusion criteria were obvious malabsorption, major depression, artificial nutrition, hyperthyroidism, and other causes of malnutrition. The final diagnosis was based on the histologic results from endoscopic ultrasonography fine needle aspiration (EUS-FNA) or surgery.

The subjects of the control groups were healthy people who were at least 18-years-old, with no previous history of any cancer and other chronic diseases. For the most part, controls were matched to cases for sex and age (plus/minus 5 years). Age, sex, tumor stage, tumor differentiation, body-mass index (BMI), smoking, and the presence of diabetes were noted.

Nutritional and functional assessment

Current body weight and height were measured at the time of inclusion. Diabetes was diagnosed if fasting glucose values met the ADA criteria^[23] and the duration since diabetes onset was recorded.

Cachexia was defined as an involuntary weight loss of more than 5% or a weight loss of more than 2% in individuals with a BMI of less than 20 kg/m² over the past 6 mo^[24].

Blood sampling

Blood samples were collected at the time of diagnosis. Peripheral venous blood was drawn into a tube containing ethylenediaminetetraacetic acid and was prepared by centrifugation at 5000 \times g for 5 min. The plasma samples were stored at -80 °C until use.

Selected proteins were quantified in the plasma using Western blot analyses.

Antibodies

The following antibodies were obtained from Abcam (Cambridge, United Kingdom): rabbit polyclonal antibody to ACV Receptor Type IIB antibody (cat. no. ab128544),

rabbit polyclonal antibody to GAPDH (glyceraldehyde 3-phosphate dehydrogenase) (cat. no. ab37168), and horseradish peroxidase (HRP) conjugated goat anti-rabbit IgG H.L antibody (cat. no. ab97051). The antibodies against midkine, mouse monoclonal IgG1 MK antibody (sc-46701, Santa Cruz Biotechnology, Santa Cruz, CA, United States) and goat anti-mouse IgG-HRP for MK (sc-2005; Santa Cruz Biotechnology, Santa Cruz, CA, United States) were obtained from Santa Cruz.

Western blot analyses

Protein concentration was determined using a protein assay kit, Quick Start Bradford Protein Assay (BioRad Laboratories, Inc.). A total of 50 µg of total protein from each plasma sample was loaded per lane onto a 12% polyacrylamide gel. Electrophoresis was performed at 120 mV, and the protein fractions were electrotransferred onto a nitrocellulose membrane at 100 mV for 1 h. The membranes were blocked for 3 h with nonfat dry milk powder (BioRad Laboratories, Inc.) in Trisbuffered saline containing 0.1% Tween20 (TBST) under constant agitation. Subsequently, the membranes were incubated overnight at 4 °C with a rabbit polyclonal antibody to ACV Receptor Type IIB antibody (cat. no. ab128544AbCam) diluted 1: 1000 in TBST, with nonfat dry milk powder and a mouse monoclonal antibody to IgG1 MK antibody (sc-46701; Santa Cruz Biotechnology, Santa Cruz, CA, United States) diluted 1: 100 in TBST with nonfat dry milk powder. For the loading control, a rabbit polyclonal antibody to GAPDH (glyceraldehyde-3-phosphate dehydrogenase) (cat. no. ab37168 AbCam) was used at a concentration of 0.8 µg/mL in nonfat dry milk powder in TBST. Membranes were washed with TBST and incubated at room temperature for 1 h with a horseradish peroxidase (HRP) conjugated goat anti-rabbit IgG H.L antibody (cat. no. ab97051, Abcam) diluted 10000fold in TBST and a goat anti-mouse IgG-HRP antibody for MK (sc-2005; Santa Cruz Biotechnology, Santa Cruz, CA, United States) diluted 5000fold in TBST, with an additional washing step performed prior to detection. For GAPDH determination, an HRPconjugated goat IgG antirabbit IgG antibody (cat. no. ab97051, Abcam) diluted 10000fold in TBST was used. Total protein expression was normalized by dividing each of the protein units by those for GAPDH.

Proteins were detected by using Clarity™ Western ECL (BioRad Laboratories, Inc.) and the membranes were imaged in a Chemidoc Imaging System (BioRad Laboratories, Inc.) and analyzed using ImageLab Software version 5.2.1 for Windows (BioRad Laboratories, Inc.).

Measurement and confirmation of the ACV and MK protein levels is often performed with normalization against “housekeeping proteins”, such as glyceraldehyde-3-phosphate dehydrogenase, to correct for protein loading and other factors, such as transfer efficiency.

For protein expression, after densitometry, the integrated density value (IDV) for each protein band (ACV and MK) was determined, and the normalized levels of ACV and MK were calculated by dividing the IDV of a protein band by the IDV of the GAPDH band (arbitrarily assigned a value of 100) in the same sample, thus quantifying the expression of the proteins as high or low expression.

Tissue samples

Tumor tissue samples from endoscopic ultrasound-fine needle aspiration and surgery were fixed with 10% formalin for pathology studies.

In addition, there was a supplementary group of 14 samples containing normal pancreatic tissues from patients who received partial pancreatectomy for benign tumors that were used as normal controls for the immunohistochemical interpretation.

Analysis of perineural invasion

The perineural invasion was assessed only on surgical tissues. The associations of perineural invasion with characteristics of PDAC were assessed on slides stained with hematoxylin-eosin. The presence of perineural invasion was defined by the infiltration of cancer cells into the perineurium or neural fascicles^[25]. The evaluation of perineural invasion was assessed mainly in tissue obtained from surgery after curative treatment. The degree of perineural invasion was defined as follows: 0- less than one occurrence per slide; 1 -two to four occurrences per slide; and 2 - more than four occurrences per slide or intraneural invasion.

Immunohistochemistry

For each case a paraffin-embedded block was selected. 3-micron-thick sections were obtained for immunohistochemistry investigation. The primary antibodies used were the following: ACV Receptor Type IIB antibody (cat. no. ab128544) diluted 1: 150 and mouse monoclonal IgG1 MK antibody (sc-46701, Santa Cruz Biotechnology, Santa Cruz, CA, United States) diluted 1: 200. The BONDIII staining instrument (Leica

Biosystems) and Bond Polymer Refine Detection Kit (Leica Biosystems) were used for all antibodies. This analysis was performed with pancreatic tumor and normal tissue samples.

All slides were scored by a pathologist (I.R.) who was blinded to all clinical data. Finally, the tissues were evaluated under a microscope. The intensity of the staining was scored as negative, weak, moderate, or strong (scores of 0, 1, 2, or 3, respectively).

Statistical analysis

Chi square test or Fisher's exact test were used for categorical data. Comparisons between two groups of continuous data were performed with a *t*-test for independent samples for data with a normal distribution or a Wilcoxon rank-sum test otherwise. Univariate and multivariate Cox proportional hazard models with each protein expression variable adjusted for age ≥ 50 years, gender, stage (T4 *vs* T1-T3), metastasis, tumor size ≥ 3 cm, and diabetes were built. The Cox proportional hazard assumption and multicollinearity assumptions were checked. Similarly, univariate and multivariate logistic regression models were built to predict metastasis. We checked the models for multicollinearity, misspecification and the goodness of fit.

For all statistical tests, a two-tailed *P* value was used, along with a 0.05 significance level. All analyses were performed in the R environment for statistical computing and graphics, version 3.4.4.

RESULTS

Patient characteristics

A total of 114 patients with PDAC and 125 controls with no tumor were enrolled in this study (Table 1).

The mean age of the population was 62.41 years (SD 11.56, range: 27-88 years). There were more males than females (61% *vs* 39%).

A total of 49 (42.98%) patients with PDAC reported a history of diabetes, including new-onset diabetes for 24 (21.05%) patients.

The most common localization of PDAC was in the pancreatic head (66 patients-49%), followed by a localization in the body (33 patients-24%), the isthmus (17 patients-12%), the pancreatic tail (13 patients-10%) and the uncinated process (7 patients-12%).

Nutritional and functional characteristics

Cachexia was more common in women ($P = 0.033$) and in patients with metastasis ($P = 0.011$). The presence of cachexia was unrelated to age ($P = 0.389$), cancer site ($P = 0.611$), tumor staging ($P = 0.148$) and perineural invasion ($P = 0.12$).

Expression of plasma and tissue MK and ACV in pancreatic cancer

MK was expressed in plasma from 54 (47.37%) PDAC patients compared to 20 (16%) controls ($P < 0.001$). Immunohistochemical staining in PDAC tissue was positive in 56 (49.12%) patients, including weak in 34 (29.82%), moderate in 16 (14.04%), and strong in 6 (5.26%), compared to none of the tissue from the supplementary controls ($P = 0.012$) (Figure 1).

ACV was expressed in plasma from 72 (63.16%) PDAC patients compared to 39 (31.2%) controls ($P < 0.001$). Immunohistochemical staining in PDAC tissue was positive in 59 patients (51.8%), including weak in 53 (46.49%) and moderate in 6 (5.26%) compared to none of the tissue from the control group ($P = 0.001$) (Figure 2).

Both proteins were detected in the tumor tissue by immunohistochemistry, and the tissue expression was significantly correlated with the plasma expression ($P = 0.002$ for Activin; and $P = 0.046$ for Midkine).

Relationships of ACV and MK expression with clinicopathological features

Table 2 summarizes the associations of MK and ACV expression with clinicopathological features in pancreatic cancer.

MK was highly expressed in the plasma of patients with an advanced T tumor stage ($P = 0.006$), metastases ($P = 0.046$), long-term diabetes ($P = 0.002$) and nonsmokers ($P = 0.032$). Nevertheless, there was no relationship between clinicopathological factors and high ACV expression. The association between ACV expression and cachexia was not statistically significant ($P = 0.5$).

Relationship between perineural invasion and expression of MK and ACV

The presence of perineural invasion was observed in only 61 PDAC specimens. The MK expression levels in PDAC were significantly higher in patients with perineural invasion than in those without perineural invasion ($P = 0.033$). The ACV expression

Table 1 Patient characteristics in the adenocarcinoma and control groups, *n* (%)

Characteristics	PDAC (<i>n</i> = 114)	Control (<i>n</i> = 125)
Age (yr), mean (SD)	64.76 (10.58) ^b	60.26 (12.03)
Age > 50 yr	103 (90.35) ^b	89 (71.2)
Sex (female)	47 (41.23)	46 (36.8)
BMI (kg/m ²), median (IQR)	25.09 (22.05-27.25)	25.26 (22.58-28.72)
Weight status		
Underweight	12 (10.53)	5 (4)
Normal	48 (42.11)	53 (42.4)
Overweight	37 (32.46)	44 (35.2)
Obesity	17 (14.91)	23 (18.4)
Smoking	50 (43.86)	69 (55.2)
New-onset diabetes	24 (21.05) ^b	8 (6.4)
Long-term diabetes	24 (21.05)	32 (25.6)
Diabetes	49 (42.98) ^a	38 (30.4)
CA 19-9 (U/mL), median (IQR)	400 (67.75-400) ^b	31.45 (9.58-98.8)
Cachexia	22 (19)	8 (6)
T stage	1-2: 10 (8.85); 3: 65 (57.52); 4: 38 (33.63)	
Histological grade	G1: 8/41 (19.51); G2: 24/41 (58.54); G3: 12/41 (29.27)	
N stage	9 (8.18)	
Metastasis	48 (42.11)	

^a*P* < 0.05,^b*P* < 0.01 *vs* controls. PDAC: Pancreatic ductal adenocarcinoma; BMI: Body-mass index; CA 19-9: Carbohydrate antigen 19-9; QR: Interquartile range; CI: Confidence interval.

level was not significantly associated with perineural invasion (*P* = 0.5).

Prediction of metastasis

To predict the presence of metastasis in patients with adenocarcinoma, we performed uni- and multivariate analysis by creating regression models, where each expression variable (MK and ACV high expression *vs* low expression) in the model was adjusted by age > 50 years, sex, diabetes, stage T4 *vs* T1-3, stage N1 *vs* N0 (Table 3). There were no statistically significant factors.

Survival in PDAC patients

Using data from the 114 patients with PDAC, we further evaluated whether the overexpression of ACV and MK was correlated with patient survival.

The univariate and multivariate Cox proportional survival analysis showed that after adjusting for age, gender, adenopathy, tumor size ≥ 3 cm, and metastases, tumor size > 3 cm, metastasis and ACV expression (Table 4) were independent predictors of poor survival (Figure 3). The survival of patients with high or low levels of MK expression was similar (Figure 4).

DISCUSSION

Our work aimed to study the relationship between perineural invasion and cachexia and their biomarkers, such as MK and ACV, respectively, and their prognostic value in patients with pancreatic cancer.

The survival in PDAC is very low, approximately 6% in 5 years, and one of the reasons is the rich stroma in the tumor tissue and the perineural invasion that extends into the pancreatic nerve plexus^[26]. One of the promoters of perineural invasion is a neurite growth factor, MK, which is present on the surface of cells and extracellular matrix that facilitates neural differentiation, cell migration, perineural invasion, neuritis out-growth^[27,28], neuronal survival^[29,30], carcinogenesis and tumor progression^[31,32]. During carcinogenesis in PDAC, it appears that the pancreatic cells bind at the level of the nerve gap or perineurium, then MK binds its receptor through an interaction that involves chondroitin sulfate, which promotes cancer infiltration, migration and the rapid development of peripheral invasion. During the repair of damage to the perineurium, more cells expressing MK are attracted, and a vicious

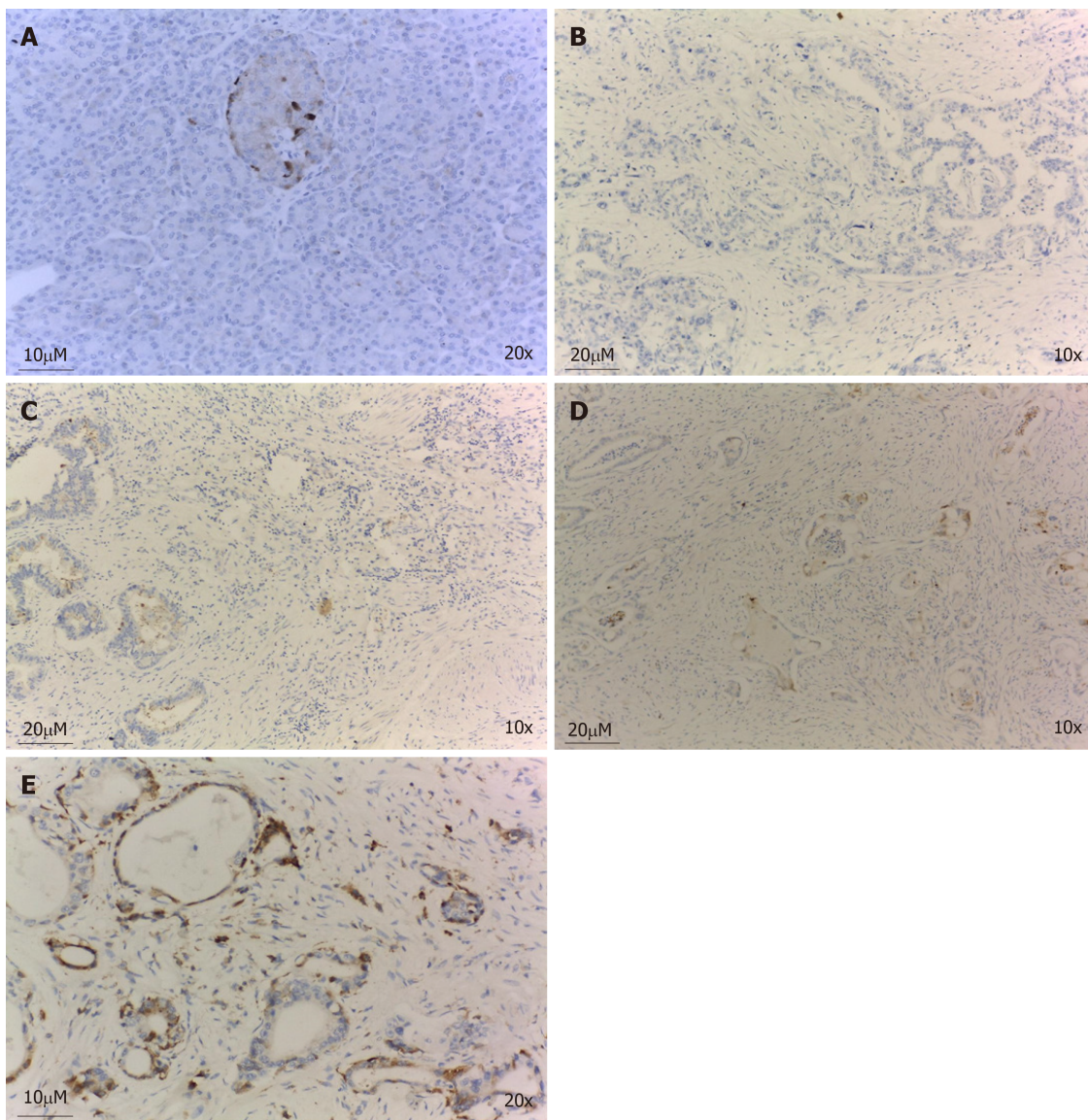


Figure 1 Immunohistochemical staining of Midkine in pancreatic adenocarcinoma and normal pancreatic tissue. A: Negative Midkine staining in normal pancreatic tissue; B: Negative Midkine staining in pancreatic tumor tissue; C: Weak Midkine expression in pancreatic tumor tissue; D: Moderate Midkine expression in pancreatic tumor tissue; E: Strong Midkine expression in pancreatic tumor tissue.

circle is formed^[21]. MK expression was not inducible in GEM-treated chemosensitive PDAC cell lines, suggesting that MK is necessary to promote survival during chemotherapy by triggering Notch-2 pathway activation^[22].

Increased levels of MK are found in 53% of PDAC, are related to venous invasion, microvessel density, and liver metastasis^[22,33] and are involved in biological activities that favor cell growth, survival and angiogenesis^[34]. MK had a low expression in the primary tumor in 80% of patients and had moderate expression in 18% of patients^[35], similar to our results in which the tissue expression was weak in almost 30%, moderate in 14% and strong in 6% of patients, and the plasma MK protein was strongly positive in PDAC patients compared to controls (47.37%) (Figure 5).

We found that high MK expression was closely correlated with advanced tumor stage, the presence of metastasis, diabetes and perineural invasion, but no relationship with cachexia was found. Similar to a previous study^[20], we confirmed the association of the MK protein with the presence of perineural invasion but in a larger group of patients (61 patients with pancreatic adenocarcinoma) than was previously reported.

The high level of MK in plasma was more frequently observed in patients with metastasis, similar to other studies^[33], but it did not predict the development of metastasis or survival in multivariate analysis.

Activin A is a member of the TGF β superfamily and is involved in many pathophysiological processes^[36]. ACV exerts most of its biological actions by binding to the membrane ACV type II receptor B^[10], a receptor that is shared with Myostatin

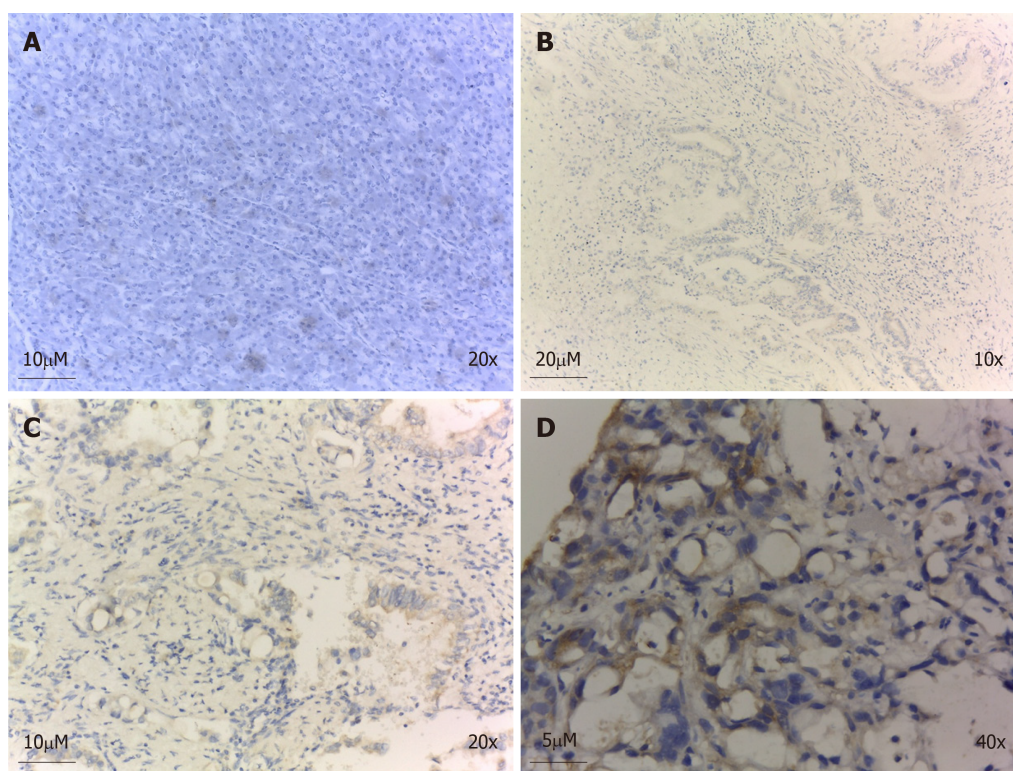


Figure 2 Immunohistochemical staining of Activin in pancreatic adenocarcinoma and normal pancreatic tissue. A: Negative Activin staining in normal pancreatic tissue; B: Weak Activin expression in pancreatic tumor tissue; C: Moderate Activin expression in pancreatic tumor tissue; D: Strong Activin expression in pancreatic tumor tissue.

(another TGF- β superfamily member), and these proteins eventually activate the SMAD pathway, which is involved in pancreatic carcinogenesis^[37-39]. ACV receptor B seems to be involved in cancer cachexia^[40,41], and its blockade by a soluble form prevents muscle atrophy and increases survival without affecting tumor growth^[42,43].

The overexpression of ACV in the tumor tissues^[44] and elevated blood ACV levels were found in 38 patients with PDAC, sustaining a non-SMAD (MAPK, PI3K/AKT) pathway^[45], which is contradictory to the suppressive role of ACV (by activating the SMAD pathway) that has been previously reported. Further studies are required to confirm the mechanism of ACV in pancreatic cancer.

In our study, the plasma ACV level in PDAC patients was higher than that in controls (63% *vs* 32%) (Figure 5), and the immunohistochemistry was positive in 51% of patients, most of whom had a low level of expression.

Despite the previous association of ACV and cachexia in patients with lung and colorectal cancer^[46], in our study, high expression of plasma ACV was not associated with cachexia, but this may be related to the small number of cachectic patients ($n = 22$). Additionally, in the multivariate analysis, ACV had no role in metastasis. The PDAC patients with high levels of ACV expression had lower survival rates than those of patients with low levels of ACV expression, supporting the prognostic role of ACV, as reported elsewhere^[45], together with tumor size and metastatic status.

Cachexia is associated with decreased visceral body fat and is associated with a lower survival in diabetic patients than in nondiabetic patients^[47]. In our study, we found no difference regarding survival in patients with or without diabetes.

Also, in our study we did not find a correlation between the presence of the cachexia and the perineural invasion. This may be due to the small number of patients who have undergone surgery (only in these patients it was possible to evaluate perineural invasion).

Patients with newly diagnosed diabetes have a 5-8 fold higher risk of being diagnosed with PDAC in the first 3 years after the development of diabetes, probably due to the direct action of insulin, which facilitates malignant transformation^[48]. Diabetes can also be a secondary phenomenon that is induced by PDAC through the destruction of beta cells^[49], but in our study, no correlation was noted between new-onset diabetes and the level of ACV or MK. In contrast, the MK level was higher in patients with long-term diabetes, but diabetes and MK again had no prognostic role. Hyperglycemia favors perineural invasion in PDAC by two mechanisms. First, hyperglycemia increases the proliferation of cancer cells, which increases the

Table 2 Protein plasma expression in adenocarcinoma patients and interaction with clinical and biological parameters, n (%)

Protein expression	Midkine		Activin	
	Low (n = 60)	High (n = 54)	Low (n = 42)	High (n = 72)
Age (yr), mean (SD)	63.02 (10.06)	66.7 (10.91)	63.64 (10.4)	65.42 (10.7)
BMI (kg/m ²), median (IQR)	24.34 (20.71-26.54)	25.79 (23.11-27.52) ^a	25.66 (22.24-27.52)	24.52 (22.05-26.94)
CA 19-9 (U/mL), median (IQR)	400 (53.5-400)	352 (70-400)	400 (53.5-400)	191 (70-400)
Age > 50 yr	53 (88.33)	50 (92.59)	36 (85.71)	67 (93.06)
Sex (female)	27 (45)	20 (37.04)	18 (42.86)	29 (40.28)
Stage (III-IV vs I-II)	28 (46.67)	39 (72.22) ^b	20 (47.62)	47 (65.28)
Histological grade				
G1	3 (16.67)	4 (17.39)	3 (16.67)	4 (17.39)
G2	10 (55.56)	12 (52.17)	13 (72.22)	9 (39.13)
G3	5 (27.78)	7 (30.43)	2 (11.11)	10 (43.48)
Metastasis	20 (33.33)	28 (51.85) ^a	14 (33.33)	34 (47.22)
Tumor size ≥ 3 cm	44 (78.57)	43 (87.76)	30 (75)	57 (87.69)
Weight loss of 5% over the past 6 mo	45 (90)	29 (82.86)	11 (26)	23 (32)
Weight				
Underweight	9 (15)	3 (5.56)	3 (7.14)	9 (12.5)
Normal	28 (46.67)	20 (37.04)	16 (38.1)	32 (44.44)
Overweight	15 (25)	22 (40.74)	14 (33.33)	23 (31.94)
Obesity	8 (13.33)	9 (16.67)		8 (11.11)
Smoking	32 (53.33)	18 (33.33) ^a	17 (40.48)	33 (45.83)
New-onset diabetes	16 (26.67)	8 (14.81)	8 (19.05)	16 (22.22)
Long-term diabetes	6 (10)	18 (33.33) ^b	10 (23.81)	14 (19.44)
Diabetes	22 (36.67)	27 (50)	18 (42.86)	31 (43.06)
IHC				
Negative	36 (60)	22 (40.74) ^a	29 (69.05)	26 (36.11) ^b
Weak	18 (30)	16 (29.63)	11 (26.19)	42 (58.33)
Moderate	5 (8.33)	11 (20.37)	2 (4.76)	4 (5.56)
Strong	1 (1.67)	5 (9.26)		
Immunohistochemistry perineural invasion (appearances on slide)	2: 3 (9.09); 0: 17 (51.52); 1: 13 (39.39)	2: 9 (32.14) ^a ; 0: 7 (25); 1: 12 (42.86)	2: 5 (17.86); 0: 13 (46.43); 1: 10 (35.71)	2: 7 (21.21); 0: 11 (33.33); 1: 15 (45.45)
Cachexia	16 (73)	6 (27)	15 (26)	7 (32)

^aP < 0.05.^bP < 0.01. BMI: Body-mass index; CA 19-9: Carbohydrate antigen; IHC: Immunohistochemistry; IQR: Interquartile range; CI: Confidence interval.

expression of cytokines such as the neurotrophic factor (NGF). The overexpression of NGF may increase the interaction between nerve cells and cancerous cells and neurotropism. The second mechanism is that hyperglycemia causes demyelination and axonal nerve degeneration, allowing cancer cells to invade nerve structures. These two mechanisms promote hyperglycemia or diabetes and may have a role in perineural invasion in pancreatic cancer^[50]. The intervention of hyperglycemia and signaling between neurons and cancer cells was associated with a higher expression of NGF in PDAC cells and the p75 neurotrophin receptor in nerve fibers in an experimental study^[51].

The limitations of this study are that perineural invasion was only examined in patients who underwent surgery (and not in all patients) and survival analysis was performed only for cancer patients. Another limitation of the study is that clinicopathological associations were made based on the expression of plasma proteins rather than in tissue. Further studies are, therefore, warranted to explore the mechanism of ACV and MK function, to investigate their potential as therapeutic targets in PDAC progression and the relationship with diabetes and perineural invasion.

In conclusion, the present data suggest that MK is a useful biomarker for perineural

Table 3 Univariate and multivariate analysis to predict metastasis

	Univariate analyses			Multivariate analyses		
	OR unadjusted	95%CI	P value	OR unadjusted	95%CI	P value
Age > 50 yr	0.95	0.23-4.16	0.942	1.24	0.33-5.2	0.75
Sex (male <i>vs</i> female)	1.25	0.53-2.99	0.617	1.27	0.56-2.91	0.571
N1	2.04	0.53-10.09	0.326	2.27	0.61-10.92	0.251
Tumor size \geq 3 cm	0.87	0.28-2.8	0.809	1.13	0.4-3.39	0.821
Midkine expression (high-expressed <i>vs</i> low-expressed)	2.12	0.92-5	0.08	1.92	0.87-4.33	0.11
Activin expression (high-expressed <i>vs</i> low-expressed)	1.94	0.78-5.01	0.157	1.62	0.71-3.81	0.261

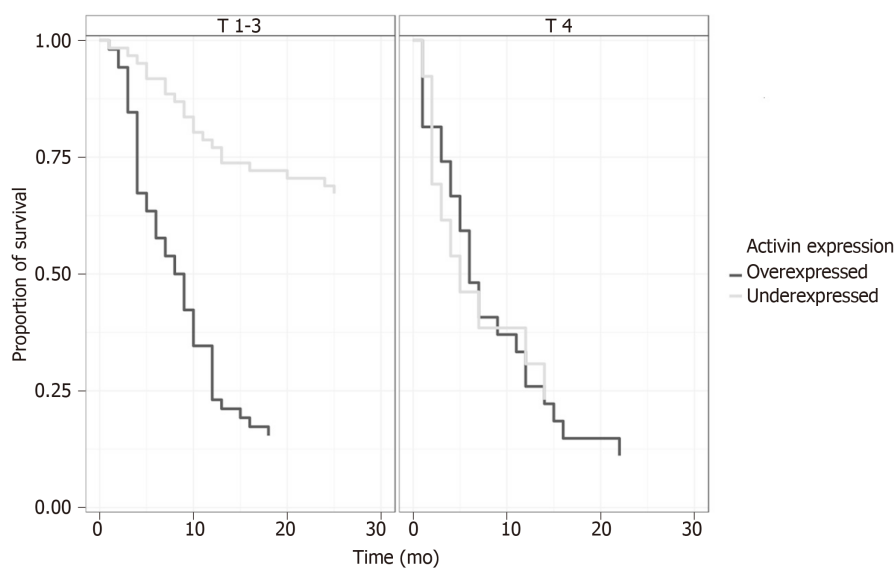
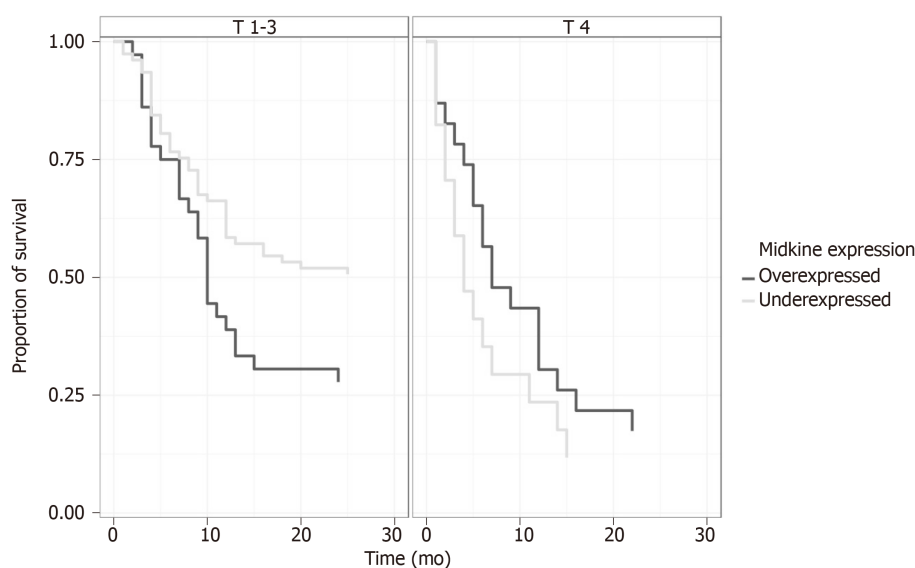
OR: Odds ratio; HR: Hazard ratio; CI: Confidence interval.

invasion, being also correlated with advanced tumor stage, the presence of metastasis and diabetes. Unfortunately, the perineural invasion and the expression of activin was not correlated with cachexia, but ACV could be an effective biomarker for predicting poor prognosis in PDAC patients, and it might be a novel therapeutic marker for selectively targeting cancer cells.

Table 4 Univariate and multivariate analysis to predict survival

	Univariate analyses			Multivariate analyses		
	HR adjusted	95%CI	P value	HR adjusted	95%CI	P value
Age > 50 yrs	2.43	1.18-5.01	0.016	1.9	0.86-4.2	0.113
Sex (male <i>vs</i> female)	0.51	0.34-0.76	0.001	0.66	0.42-1.05	0.078
N1	1.42	0.74-2.73	0.299	1.13	0.54-2.36	0.745
Tumor size ≥ 3 cm	2.13	1.13-4.01	0.02	2.36	1.21-4.62	0.012
Metastases	2.09	1.4-3.12	< 0.001	1.62	1.01-2.62	0.047
Midkine expression (high-expressed <i>vs</i> low-expressed)	1.67	1.12-2.48	0.011	0.76	0.48-1.2	0.24
Activin expression (high-expressed <i>vs</i> low-expressed)	3.61	2.34-5.56	< 0.001	1.98	1.2-3.27	0.008

OR: Odds ratio; HR: Hazard ratio; CI: Confidence interval.


Figure 3 Overall survival comparison between high and low-expressed Activin stratified by tumoral stage T1-3 vs T4.

Figure 4 Overall survival comparison between high and low-expressed Midkine stratified by tumoral stage T1-3 vs T4.

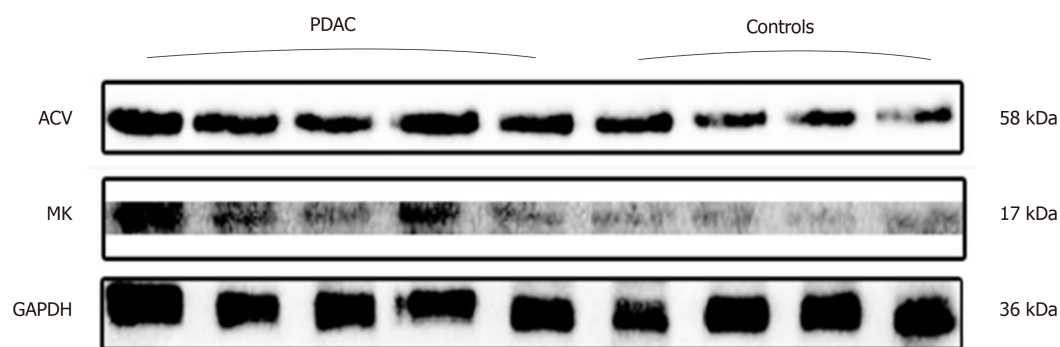


Figure 5 Western blot analyses of Activeine and Midkine in patients with pancreatic adenocarcinoma and controls.

ARTICLE HIGHLIGHTS

Research background

Pancreatic cancer has a high mortality rate, due to late diagnosis. Cachexia and perineural invasion have an increased incidence in pancreatic cancer, leading to decreased quality of life. Combating pain and cachexia through optimal treatment options can lead to increased quality of life and improved survival.

Research motivation

We wanted a better understanding of the involvement of cachexia and pain in pancreatic cancer and their relationship with different clinico-pathological factors, constituting a basis for discovering new therapeutic targets.

Research objectives

Defining the profile of cachexia in pancreatic cancer; establishing the degree of perineural invasion in pancreatic cancer; Highlighting the interrelationship between cachexia and perineural invasion in pancreatic cancer.

Research methods

We conducted a prospective study in 114 patients with pancreatic cancer and 125 healthy people as controls. Blood samples were used and pancreatic tissue were collected through EUS-FNA or surgery. The method of determining the biomarkers of cachexia (Activin) and perineural invasion (Midkine) in plasma was western blot, respectively immunohistochemistry in pancreatic tissue.

Research results

The analysis of the data showed an Activin (ACV) and Midkine (MK) proteins overexpression in plasma of patients with pancreatic cancer *vs* control, results that were correlated with the expression of proteins in the pancreatic cancer tissue. MK was also significantly correlated with advanced T stage, metastasis, diabetes and perineural invasion. ACV was significantly correlated with survival.

Research conclusions

MK can be considered a biomarker for perineural invasion, and ACV a prognostic factor for patients with pancreatic cancer.

Research perspectives

This research would open new perspectives in choosing the treatment that involves activin antagonists in order to prolong survival in patients with pancreatic cancer.

ACKNOWLEDGEMENTS

We thank Dr. Cristian Coman, Institute of Biology Research, Cluj-Napoca and Associate Prof. Manuela Banciu, PhD, Faculty of Biology and Geology, University of Babes-Bolyai, Cluj-Napoca for their support. This study was partially funded by the "Iuliu Hațieganu" University of Medicine and Pharmacy, Cluj-Napoca, through the Doctoral Research Project-2015 (No. 7690/36/15.04.2016). The financial support allocated from the grant was used for the acquisition of biomarkers and laboratory supplies. The sponsor had no involvement in the study design, collection, analysis and interpretation of data, writing of the manuscript or decision to submit the manuscript for publication.

REFERENCES

- Rahib L**, Smith BD, Aizenberg R, Rosenzweig AB, Fleshman JM, Matrisian LM. Projecting cancer incidence and deaths to 2030: the unexpected burden of thyroid, liver, and pancreas cancers in the United States. *Cancer Res* 2014; **74**: 2913-2921 [PMID: [24840647](#) DOI: [10.1158/0008-5472.CAN-14-0155](#)]
- Global Burden of Disease Cancer Collaboration**. Fitzmaurice C, Allen C, Barber RM, Barregard L, Bhutta ZA, Brenner H, Dicker DJ, Chimed-Orchir O, Dandona R, Dandona L, Fleming T, Forouzanfar MH, Hancock J, Hay RJ, Hunter-Merrill R, Huynh C, Hosgood HD, Johnson CO, Jonas JB, Khubchandani J, Kumar GA, Kutz M, Lan Q, Larson HJ, Liang X, Lim SS, Lopez AD, MacIntyre MF, Marczak L, Marquez N, Mokdad AH, Pinho C, Pourmalek F, Salomon JA, Sanabria JR, Sandar L, Sartorius B, Schwartz SM, Shackelford KA, Shibuya K, Stanaway J, Steiner C, Sun J, Takahashi K, Vollset SE, Vos T, Wagner JA, Wang H, Westerman R, Zeeb H, Zocckler L, Abd-Allah F, Ahmed MB, Alabed S, Alam NK, Aldhahri SF, Alem G, Alemayohu MA, Ali R, Al-Raddadi R, Amare A, Amoako Y, Artaman A, Asayesh H, Atanfu N, Awasthi A, Saleem HB, Barac A, Bedi N, Bensenor I, Berhane A, Bernabé E, Betsu B, Binagwaho A, Boneya D, Campos-Nonato I, Castañeda-Orjuela C, Catalá-López F, Chiang P, Chibueze C, Chittheer A, Choi JY, Cowie B, Damtew S, das Neves J, Dey S, Dharmaratne S, Dhillon P, Ding E, Driscoll T, Ekwueme D, Endries AY, Farvid M, Farzadfar F, Fernandes J, Fischer F, G/Hiwot TT, Gebru A, Gopalani S, Hailu A, Horino M, Horita N, Hussein A, Huybrechts I, Inoue M, Islami F, Jakovljevic M, James S, Javanbakht M, Jee SH, Kasaeian A, Kedar MS, Khader YS, Khang YH, Kim D, Leigh J, Linn S, Lunevicius R, El Razek HMA, Malekzadeh R, Malta DC, Marceses W, Markos D, Melaku YA, Meles KG, Mendoza W, Mengiste DT, Meretoja TJ, Miller TR, Mohammad KA, Mohammadi A, Mohammed S, Moradi-Lakeh M, Nagel G, Nand D, Le Nguyen Q, Nolte S, Ogbo FA, Oladimeji KE, Oren E, Pa M, Park EK, Pereira DM, Plass D, Qorbani M, Radfar A, Rafay A, Rahman M, Rana SM, Søreide K, Satpathy M, Sawhney M, Sepanlou SG, Shaikh MA, She J, Shiue I, Shore HR, Shrivastava MG, So S, Soneji S, Stathopoulou V, Stroumpoulis K, Sufiyan MB, Sykes BL, Tabarés-Seisdedos R, Tadese F, Tedla BA, Tessema GA, Thakur JS, Tran BX, Ukwaja KN, Uzochukwu BSC, Vlassov VV, Weiderpass E, Wubshet Terefe M, Yebo HG, Yimam HH, Yonemoto N, Younis MZ, Yu C, Zaidi Z, Zaki MES, Zenebe ZM, Murray CJL, Naghavi M. Global, Regional, and National Cancer Incidence, Mortality, Years of Life Lost, Years Lived With Disability, and Disability-Adjusted Life-years for 32 Cancer Groups, 1990 to 2015: A Systematic Analysis for the Global Burden of Disease Study. *JAMA Oncol* 2017; **3**: 524-548 [PMID: [27918777](#) DOI: [10.1001/jamaoncol.2016.5688](#)]
- Siegel R**, Naishadham D, Jemal A. Cancer statistics, 2013. *CA Cancer J Clin* 2013; **63**: 11-30 [PMID: [23335087](#) DOI: [10.3322/caac.21166](#)]
- Allemani C**, Matsuda T, Di Carlo V, Harewood R, Matz M, Nikšić M, Bonaventure A, Valkov M, Johnson CJ, Estève J, Ogunbiyi OJ, Azevedo E Silva G, Chen WQ, Eser S, Engholm G, Stiller CA, Monnereau A, Woods RR, Visser O, Lim GH, Aitken J, Weir HK, Coleman MP; CONCORD Working Group. Global surveillance of trends in cancer survival 2000-14 (CONCORD-3): analysis of individual records for 37 513 025 patients diagnosed with one of 18 cancers from 322 population-based registries in 71 countries. *Lancet* 2018; **391**: 1023-1075 [PMID: [29395269](#) DOI: [10.1016/S0140-6736\(17\)33326-3](#)]
- Wigmore SJ**, Plester CE, Richardson RA, Fearon KC. Changes in nutritional status associated with unresectable pancreatic cancer. *Br J Cancer* 1997; **75**: 106-109 [PMID: [9000606](#) DOI: [10.1038/bjc.1997.17](#)]
- Di Sebastiano KM**, Yang L, Zbuk K, Wong RK, Chow T, Koff D, Moran GR, Mourtzakis M. Accelerated muscle and adipose tissue loss may predict survival in pancreatic cancer patients: the relationship with diabetes and anaemia. *Br J Nutr* 2013; **109**: 302-312 [PMID: [23021109](#) DOI: [10.1017/S0007114512001067](#)]
- Choi MH**, Yoon SB, Lee K, Song M, Lee IS, Lee MA, Hong TH, Choi MG. Preoperative sarcopenia and post-operative accelerated muscle loss negatively impact survival after resection of pancreatic cancer. *J Cachexia Sarcopenia Muscle* 2018; **9**: 326-334 [PMID: [29399990](#) DOI: [10.1002/jcsm.12274](#)]
- Argilés JM**, Stemmler B, López-Soriano FJ, Busquets S. Nonmuscle Tissues Contribution to Cancer Cachexia. *Mediators Inflamm* 2015; **2015**: 182872 [PMID: [26523094](#) DOI: [10.1155/2015/182872](#)]
- Yakovenko A**, Cameron M, Trevino JG. Molecular therapeutic strategies targeting pancreatic cancer induced cachexia. *World J Gastrointest Surg* 2018; **10**: 95-106 [PMID: [30622678](#) DOI: [10.4240/wjgs.v10.i9.95](#)]
- McPherron AC**, Lawler AM, Lee SJ. Regulation of skeletal muscle mass in mice by a new TGF-beta superfamily member. *Nature* 1997; **387**: 83-90 [PMID: [9139826](#) DOI: [10.1038/387083a0](#)]
- Ji C**, Chen X, Gao C, Jiao L, Wang J, Xu G, Fu H, Guo X, Zhao Y. IL-6 induces lipolysis and mitochondrial dysfunction, but does not affect insulin-mediated glucose transport in 3T3-L1 adipocytes. *J Bioenerg Biomembr* 2011; **43**: 367-375 [PMID: [21732177](#) DOI: [10.1007/s10863-011-9361-8](#)]
- Negri KA**, Roth Flach RJ, DiStefano MT, Matevosian A, Friedline RH, Jung D, Kim JK, Czech MP. IL-1 signaling in obesity-induced hepatic lipogenesis and steatosis. *PLoS One* 2014; **9**: e107265 [PMID: [25216251](#) DOI: [10.1371/journal.pone.0107265](#)]
- Dodt C**, Lönnroth P, Wellhöner JP, Fehm HL, Elam M. Sympathetic control of white adipose tissue in lean and obese humans. *Acta Physiol Scand* 2003; **177**: 351-357 [PMID: [12609006](#) DOI: [10.1046/j.1365-201X.2003.01077.x](#)]
- Qvist V**, Hagström-Toft E, Enoksson S, Moberg E, Arner P, Bolinder J. Human skeletal muscle lipolysis is more responsive to epinephrine than to norepinephrine stimulation in vivo. *J Clin Endocrinol Metab* 2006; **91**: 665-670 [PMID: [16303838](#) DOI: [10.1210/jc.2005-0859](#)]
- Lynch GS**, Ryall JG. Role of beta-adrenoceptor signaling in skeletal muscle: implications for muscle wasting and disease. *Physiol Rev* 2008; **88**: 729-767 [PMID: [18391178](#) DOI: [10.1152/physrev.00028.2007](#)]
- Ceyhan GO**, Bergmann F, Kadihasanoglu M, Altintas B, Demir IE, Hinz U, Müller MW, Giese T, Büchler MW, Giese NA, Friess H. Pancreatic neuropathy and neuropathic pain--a comprehensive pathomorphological study of 546 cases. *Gastroenterology* 2009; **136**: 177-186.e1 [PMID: [18992743](#) DOI: [10.1053/j.gastro.2008.09.029](#)]
- Gwak YS**, Crown ED, Unabia GC, Hulsebosch CE. Propentofylline attenuates allodynia, glial activation and modulates GABAergic tone after spinal cord injury in the rat. *Pain* 2008; **138**: 410-422 [PMID: [18353556](#) DOI: [10.1016/j.pain.2008.01.021](#)]
- Iwasaki T**, Hiraoka N, Ino Y, Nakajima K, Kishi Y, Nara S, Esaki M, Shimada K, Katai H. Reduction of intrapancreatic neural density in cancer tissue predicts poorer outcome in pancreatic ductal carcinoma. *Cancer Sci* 2019; **110**: 1491-1502 [PMID: [30776178](#) DOI: [10.1111/cas.13975](#)]

- 19 **Wang PH**, Song N, Shi LB, Zhang QH, Chen ZY. The relationship between multiple clinicopathological features and nerve invasion in pancreatic cancer. *Hepatobiliary Pancreat Dis Int* 2013; **12**: 546-551 [PMID: [24103287](#) DOI: [10.1016/S1499-3872\(13\)60086-7](#)]
- 20 **Yao J**, Li WY, Li SG, Feng XS, Gao SG. Midkine promotes perineural invasion in human pancreatic cancer. *World J Gastroenterol* 2014; **20**: 3018-3024 [PMID: [24659893](#) DOI: [10.3748/wjg.v20.i11.3018](#)]
- 21 **Yao J**, Li WY, Gao SG. The advances of Midkine with peripheral invasion in pancreatic cancer. *Am J Cancer Res* 2015; **5**: 2912-2917 [PMID: [26609495](#)]
- 22 **Güngör C**, Hofmann BT, Wolters-Eisfeld G, Bockhorn M. Pancreatic cancer. *Br J Pharmacol* 2014; **171**: 849-858 [PMID: [24024905](#) DOI: [10.1111/bph.12401](#)]
- 23 **American Diabetes Association**. (2) Classification and diagnosis of diabetes. *Diabetes Care* 2015; **38** Suppl: S8-S16 [PMID: [25537714](#) DOI: [10.2337/dc15-S005](#)]
- 24 **Fearon K**, Strasser F, Anker SD, Bosaeus I, Bruera E, Fainsinger RL, Jatoi A, Loprinzi C, MacDonald N, Mantovani G, Davis M, Muscaritoli M, Ottery F, Radbruch L, Ravasco P, Walsh D, Wilcock A, Kaasa S, Baracos VE. Definition and classification of cancer cachexia: an international consensus. *Lancet Oncol* 2011; **12**: 489-495 [PMID: [21296615](#) DOI: [10.1016/S1470-2045\(10\)70218-7](#)]
- 25 **Zhu Z**, Friess H, diMola FF, Zimmermann A, Graber HU, Korc M, Büchler MW. Nerve growth factor expression correlates with perineural invasion and pain in human pancreatic cancer. *J Clin Oncol* 1999; **17**: 2419-2428 [PMID: [10561305](#) DOI: [10.1200/JCO.1999.17.8.2419](#)]
- 26 **Ceyhan GO**, Schäfer KH, Kerscher AG, Rauch U, Demir IE, Kadihasanoglu M, Böhm C, Müller MW, Büchler MW, Giese NA, Erkan M, Friess H. Nerve growth factor and artemin are paracrine mediators of pancreatic neuropathy in pancreatic adenocarcinoma. *Ann Surg* 2010; **251**: 923-931 [PMID: [20395845](#) DOI: [10.1097/SLA.0b013e3181d974d4](#)]
- 27 **Rauvala H**, Peng HB. HB-GAM (heparin-binding growth-associated molecule) and heparin-type glycans in the development and plasticity of neuron-target contacts. *Prog Neurobiol* 1997; **52**: 127-144 [PMID: [9185236](#) DOI: [10.1016/S0304-0082\(97\)00007-5](#)]
- 28 **Pirie NW**. Some obstacles to eliminating famine. *Proc Nutr Soc* 1975; **34**: 181-186 [PMID: [1208498](#) DOI: [10.1023/A:1016042303253](#)]
- 29 **Sakaguchi N**, Muramatsu H, Ichihara-Tanaka K, Maeda N, Noda M, Yamamoto T, Michikawa M, Ikematsu S, Sakuma S, Muramatsu T. Receptor-type protein tyrosine phosphatase zeta as a component of the signaling receptor complex for midkine-dependent survival of embryonic neurons. *Neurosci Res* 2003; **45**: 219-224 [PMID: [12573468](#) DOI: [10.1016/S0168-0102\(02\)00226-2](#)]
- 30 **Owada K**, Sanjo N, Kobayashi T, Mizusawa H, Muramatsu H, Muramatsu T, Michikawa M. Midkine inhibits caspase-dependent apoptosis via the activation of mitogen-activated protein kinase and phosphatidylinositol 3-kinase in cultured neurons. *J Neurochem* 1999; **73**: 2084-2092 [PMID: [10537068](#) DOI: [10.1046/j.1471-4159.1999.02084.x](#)]
- 31 **Muramatsu T**. Midkine and pleiotrophin: two related proteins involved in development, survival, inflammation and tumorigenesis. *J Biochem* 2002; **132**: 359-371 [PMID: [12204104](#) DOI: [10.1093/oxford-journals.jbchem.a003231](#)]
- 32 **Kadomatsu K**, Muramatsu T. Midkine and pleiotrophin in neural development and cancer. *Cancer Lett* 2004; **204**: 127-143 [PMID: [15013213](#) DOI: [10.1016/S0304-3835\(03\)00450-6](#)]
- 33 **Maeda S**, Shinchi H, Kurahara H, Mataka Y, Noma H, Maemura K, Aridome K, Yokomine T, Natsugoe S, Aikou T, Takao S. Clinical significance of midkine expression in pancreatic head carcinoma. *Br J Cancer* 2007; **97**: 405-411 [PMID: [17622248](#) DOI: [10.1038/sj.bjc.6603879](#)]
- 34 **Dai LC**. Midkine translocated to nucleoli and involved in carcinogenesis. *World J Gastroenterol* 2009; **15**: 412-416 [PMID: [19152444](#) DOI: [10.3748/wjg.15.412](#)]
- 35 **Grupp K**, Melling N, Bogoevska V, Reeh M, Uzunoglu FG, El Gammal AT, Nentwich MF, Izbicki JR, Bogoevski D. Expression of ICAM-1, E-cadherin, periostin and midkine in metastases of pancreatic ductal adenocarcinomas. *Exp Mol Pathol* 2018; **104**: 109-113 [PMID: [29355490](#) DOI: [10.1016/j.yexmp.2018.01.005](#)]
- 36 **Xia Y**, Schneyer AL. The biology of activin: recent advances in structure, regulation and function. *J Endocrinol* 2009; **202**: 1-12 [PMID: [19273500](#) DOI: [10.1677/JOE-08-0549](#)]
- 37 **Itoh S**, Itoh F, Goumans MJ, Ten Dijke P. Signaling of transforming growth factor-beta family members through Smad proteins. *Eur J Biochem* 2000; **267**: 6954-6967 [PMID: [11106403](#) DOI: [10.1046/j.1432-1327.2000.01828.x](#)]
- 38 **Bernard DJ**, Lee KB, Santos MM. Activin B can signal through both ALK4 and ALK7 in gonadotrope cells. *Reprod Biol Endocrinol* 2006; **4**: 52 [PMID: [17040568](#) DOI: [10.1186/1477-7827-4-52](#)]
- 39 **Tsuchida K**, Nakatani M, Yamakawa N, Hashimoto O, Hasegawa Y, Sugino H. Activin isoforms signal through type I receptor serine/threonine kinase ALK7. *Mol Cell Endocrinol* 2004; **220**: 59-65 [PMID: [15196700](#) DOI: [10.1016/j.mce.2004.03.009](#)]
- 40 **Chen JL**, Walton KL, Winbanks CE, Murphy KT, Thomson RE, Makanji Y, Qian H, Lynch GS, Harrison CA, Gregorevic P. Elevated expression of activins promotes muscle wasting and cachexia. *FASEB J* 2014; **28**: 1711-1723 [PMID: [24378873](#) DOI: [10.1096/fj.13-245894](#)]
- 41 **Seder CW**, Hartojo W, Lin L, Silvers AL, Wang Z, Thomas DG, Giordano TJ, Chen G, Chang AC, Orringer MB, Beer DG. Upregulated INHBA expression may promote cell proliferation and is associated with poor survival in lung adenocarcinoma. *Neoplasia* 2009; **11**: 388-396 [PMID: [19308293](#) DOI: [10.1593/neo.81582](#)]
- 42 **Zhou X**, Wang JL, Lu J, Song Y, Kwak KS, Jiao Q, Rosenfeld R, Chen Q, Boone T, Simonet WS, Lacey DL, Goldberg AL, Han HQ. Reversal of cancer cachexia and muscle wasting by ActRIIB antagonism leads to prolonged survival. *Cell* 2010; **142**: 531-543 [PMID: [20723755](#) DOI: [10.1016/j.cell.2010.07.011](#)]
- 43 **Busquets S**, Toledo M, Orpi M, Massa D, Porta M, Capdevila E, Padilla N, Frailis V, López-Soriano FJ, Han HQ, Argilés JM. Myostatin blockage using actRIIB antagonism in mice bearing the Lewis lung carcinoma results in the improvement of muscle wasting and physical performance. *J Cachexia Sarcopenia Muscle* 2012; **3**: 37-43 [PMID: [22450815](#) DOI: [10.1007/s13539-011-0049-z](#)]
- 44 **Kleeff J**, Ishiwata T, Friess H, Büchler MW, Korc M. Concomitant over-expression of activin/inhibin beta subunits and their receptors in human pancreatic cancer. *Int J Cancer* 1998; **77**: 860-868 [PMID: [9714055](#) DOI: [10.1002/\(sici\)1097-0215\(19980911\)77:6<860::aid-ijc11>3.0.co;2-5](#)]
- 45 **Togashi Y**, Kogita A, Sakamoto H, Hayashi H, Terashima M, de Velasco MA, Sakai K, Fujita Y, Tomida S, Kitano M, Okuno K, Kudo M, Nishio K. Activin signal promotes cancer progression and is involved in cachexia in a subset of pancreatic cancer. *Cancer Lett* 2015; **356**: 819-827 [PMID: [25449777](#) DOI: [10.1016/j.canlet.2014.10.037](#)]
- 46 **Loumaye A**, de Barys M, Nachit M, Lause P, Frateur L, van Maanen A, Trefois P, Gruson D, Thissen JP.

- Role of Activin A and myostatin in human cancer cachexia. *J Clin Endocrinol Metab* 2015; **100**: 2030-2038 [PMID: 25751105 DOI: 10.1210/jc.2014-4318]
- 47 **Sah RP**, Nagpal SJ, Mukhopadhyay D, Chari ST. New insights into pancreatic cancer-induced paraneoplastic diabetes. *Nat Rev Gastroenterol Hepatol* 2013; **10**: 423-433 [PMID: 23528347 DOI: 10.1038/nrgastro.2013.49]
- 48 **Li D**, Mao Y. Diabetes as a Risk Factor of Pancreatic Cancer. *Pancreapedia Exocrine Pancreas Knowledge Base* 2015 [DOI: 10.3998/panc.2015.2]
- 49 **Gupta S**, Vittinghoff E, Bertenthal D, Corley D, Shen H, Walter LC, McQuaid K. New-onset diabetes and pancreatic cancer. *Clin Gastroenterol Hepatol* 2006; **4**: 1366-72; quiz 1301 [PMID: 16945591 DOI: 10.1016/j.cgh.2006.06.024]
- 50 **Li J**, Ma Q. Hyperglycemia promotes the perineural invasion in pancreatic cancer. *Med Hypotheses* 2008; **71**: 386-389 [PMID: 18571873 DOI: 10.1016/j.mehy.2008.05.001]
- 51 **Li J**, Ma Q, Liu H, Guo K, Li F, Li W, Han L, Wang F, Wu E. Relationship between neural alteration and perineural invasion in pancreatic cancer patients with hyperglycemia. *PLoS One* 2011; **6**: e17385 [PMID: 21386984 DOI: 10.1371/journal.pone.0017385]



Published By Baishideng Publishing Group Inc
7041 Koll Center Parkway, Suite 160, Pleasanton, CA 94566, USA
Telephone: +1-925-2238242
E-mail: bpgoffice@wjgnet.com
Help Desk: <https://www.f6publishing.com/helpdesk>
<https://www.wjgnet.com>

