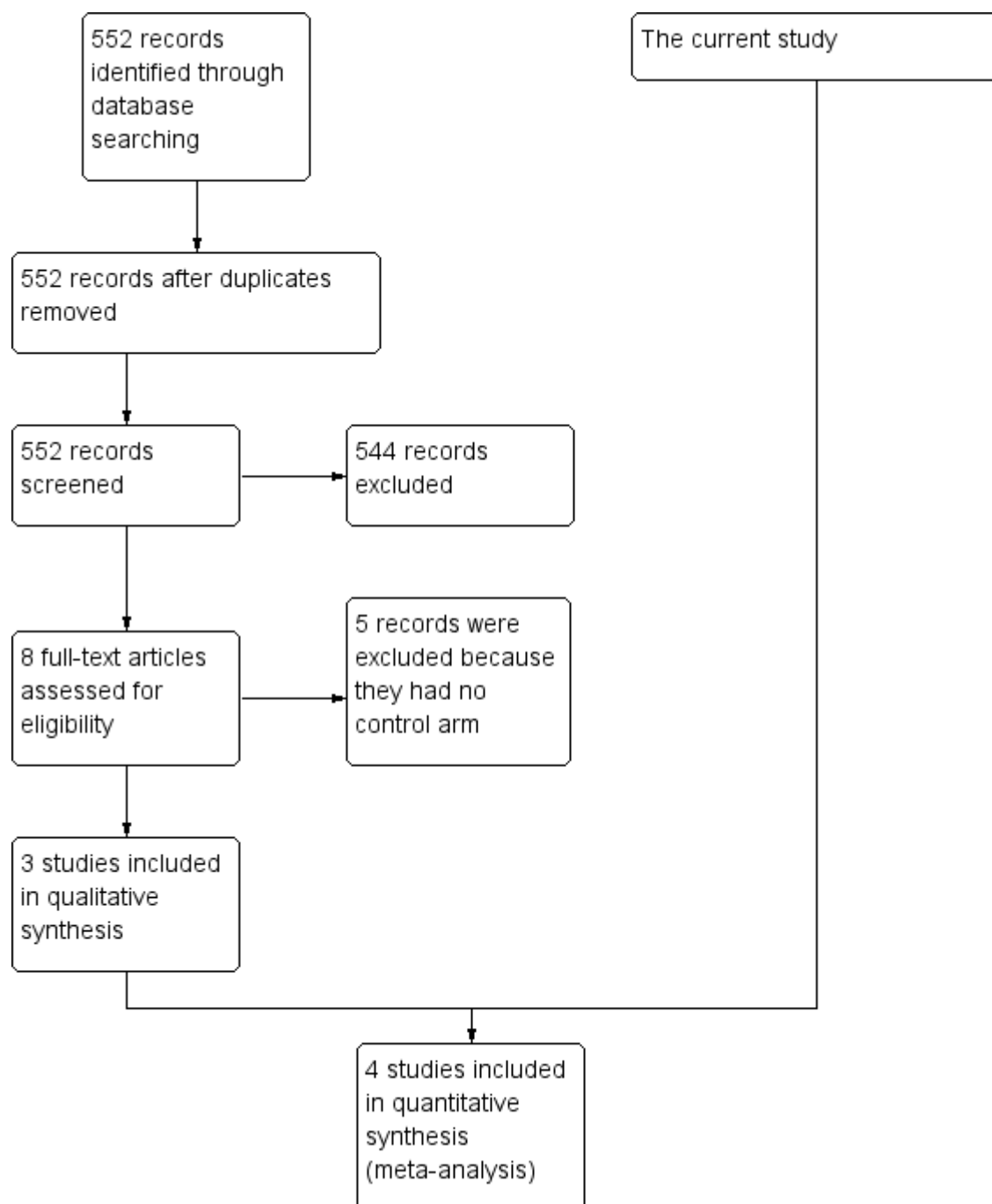


## Supplementary Material

**Supplementary Table 1** Literature search strategy

Search No	Search strategy <sup>1</sup>
#1	diverticulitis: TI, AB, KW
#2	MeSH descriptor: [diverticulitis] explode all trees
#3	MeSH descriptor: [colonic diverticulitis] explode all trees
#4	#1 OR #2 OR #3
#5	colonoscopy: TI, AB, KW
#6	endoscopy: TI, AB, KW
#7	sigmoidoscopy: TI, AB, KW
#8	MeSH descriptor: [colonoscopy] explode all trees
#9	MeSH descriptor: [endoscopy] explode all trees
#10	#5 OR #6 OR #7 OR #8 OR #9
#11	#4 AND #10

<sup>1</sup>This search strategy was adopted for following databases: MEDLINE, EMBASE, CINAHL and the Cochrane Central Register of Controlled Trials (CENTRAL).



**Supplementary Figure 1 Study flow diagram for the meta-analysis.**