

World Journal of *Clinical Cases*

World J Clin Cases 2019 December 6; 7(23): 3915-4171



**REVIEW**

- 3915** Overview of organic anion transporters and organic anion transporter polypeptides and their roles in the liver
Li TT, An JX, Xu JY, Tuo BG

ORIGINAL ARTICLE**Observational Study**

- 3934** Value of early diagnosis of sepsis complicated with acute kidney injury by renal contrast-enhanced ultrasound
Wang XY, Pang YP, Jiang T, Wang S, Li JT, Shi BM, Yu C
- 3945** Value of elastography point quantification in improving the diagnostic accuracy of early diabetic kidney disease
Liu QY, Duan Q, Fu XH, Fu LQ, Xia HW, Wan YL
- 3957** Resection of recurrent third branchial cleft fistulas assisted by flexible pharyngotomy
Ding XQ, Zhu X, Li L, Feng X, Huang ZC
- 3964** Therapeutic efficacy of acupuncture combined with neuromuscular joint facilitation in treatment of hemiplegic shoulder pain
Wei YH, Du DC, Jiang K
- 3971** Comparison of intra-articular injection of parecoxib *vs* oral administration of celecoxib for the clinical efficacy in the treatment of early knee osteoarthritis
Lu L, Xie Y, Gan K, Huang XW

Retrospective Study

- 3980** Celiomesenteric trunk: New classification based on multidetector computed tomography angiographic findings and probable embryological mechanisms
Tang W, Shi J, Kuang LQ, Tang SY, Wang Y

Prospective Study

- 3990** Interaction of arylsulfatases A and B with maspin: A possible explanation for dysregulation of tumor cell metabolism and invasive potential of colorectal cancer
Kovacs Z, Jung I, Szalman K, Baniás L, Bara TJ, Gurzu S

CASE REPORT

- 4004** Recuperation of severe tumoral calcinosis in a dialysis patient: A case report
Westermann L, Isbell LK, Breitenfeldt MK, Arnold F, Röthele E, Schneider J, Widmeier E

- 4011** Robotic wedge resection of a rare gastric perivascular epithelioid cell tumor: A case report
Marano A, Maione F, Woo Y, Pellegrino L, Geretto P, Sasia D, Fortunato M, Orcioni GF, Priotto R, Fasoli R, Borghi F
- 4020** Primary parahiatal hernias: A case report and review of the literature
Preda SD, Pătrașcu Ș, Ungureanu BS, Cristian D, Bințișan V, Nica CM, Calu V, Strâmbu V, Sapalidis K, Șurlin VM
- 4029** Diagnosis of Laron syndrome using monoplex-polymerase chain reaction technology with a whole-genome amplification template: A case report
Neumann A, Alcántara-Ortigoza MÁ, González-del Ángel A, Camargo-Diaz F, López-Bayghen E
- 4036** *In-vitro* proliferation assay with recycled ascitic cancer cells in malignant pleural mesothelioma: A case report
Anayama T, Taguchi M, Tatenuma T, Okada H, Miyazaki R, Hirohashi K, Kume M, Matsusaki K, Orihashi K
- 4044** Distant metastasis in choroidal melanoma with spontaneous corneal perforation and intratumoral calcification: A case report
Wang TW, Liu HW, Bee YS
- 4052** Secondary Parkinson disease caused by breast cancer during pregnancy: A case report
Li L
- 4057** Pulmonary embolism and deep vein thrombosis caused by nitrous oxide abuse: A case report
Sun W, Liao JP, Hu Y, Zhang W, Ma J, Wang GF
- 4063** Micronodular thymic tumor with lymphoid stroma: A case report and review of the literature
Wang B, Li K, Song QK, Wang XH, Yang L, Zhang HL, Zhong DR
- 4075** Diffuse large B cell lymphoma with bilateral adrenal and hypothalamic involvement: A case report and literature review
An P, Chen K, Yang GQ, Dou JT, Chen YL, Jin XY, Wang XL, Mu YM, Wang QS
- 4084** Urethral pressure profilometry in artificial urinary sphincter implantation: A case report
Meng LF, Liu XD, Wang M, Zhang W, Zhang YG
- 4091** Hydroxyurea-induced cutaneous squamous cell carcinoma: A case report
Xu Y, Liu J
- 4098** Recurrent hypotension induced by sacubitril/valsartan in cardiomyopathy secondary to Duchenne muscular dystrophy: A case report
Li JM, Chen H
- 4106** Complete duodenal obstruction induced by groove pancreatitis: A case report
Wang YL, Tong CH, Yu JH, Chen ZL, Fu H, Yang JH, Zhu X, Lu BC

- 4111** Radiological aspects of giant hepatocellular adenoma of the left liver: A case report
Zheng LP, Hu CD, Wang J, Chen XJ, Shen YY
- 4119** Mixed serous-neuroendocrine neoplasm of the pancreas: A case report and review of the literature
Xu YM, Li ZW, Wu HY, Fan XS, Sun Q
- 4130** Rigid esophagoscopy combined with angle endoscopy for treatment of superior mediastinal foreign bodies penetrating into the esophagus caused by neck trauma: A case report
Wang D, Gao CB
- 4137** Left armpit subcutaneous metastasis of gastric cancer: A case report
He FJ, Zhang P, Wang MJ, Chen Y, Zhuang W
- 4144** Bouveret syndrome: A case report
Wang F, Du ZQ, Chen YL, Chen TM, Wang Y, Zhou XR
- 4150** Fatal complications in a patient with severe multi-space infections in the oral and maxillofacial head and neck regions: A case report
Dai TG, Ran HB, Qiu YX, Xu B, Cheng JQ, Liu YK
- 4157** Management of massive fistula bleeding after endoscopic ultrasound-guided pancreatic pseudocyst drainage using hemostatic forceps: A case report
Ge N, Sun SY
- 4163** Pure squamous cell carcinoma of the gallbladder locally invading the liver and abdominal cavity: A case report and review of the literature
Jin S, Zhang L, Wei YF, Zhang HJ, Wang CY, Zou H, Hu JM, Jiang JF, Pang LJ

ABOUT COVER

Editorial Board Member of *World Journal of Clinical Cases*, Consolato M Sergi, FRCP (C), MD, PhD, Professor, Department of Lab Medicine and Pathology, University of Alberta, Edmonton T6G 2B7, Canada

AIMS AND SCOPE

The primary aim of *World Journal of Clinical Cases* (WJCC, *World J Clin Cases*) is to provide scholars and readers from various fields of clinical medicine with a platform to publish high-quality clinical research articles and communicate their research findings online.

WJCC mainly publishes articles reporting research results and findings obtained in the field of clinical medicine and covering a wide range of topics, including case control studies, retrospective cohort studies, retrospective studies, clinical trials studies, observational studies, prospective studies, randomized controlled trials, randomized clinical trials, systematic reviews, meta-analysis, and case reports.

INDEXING/ABSTRACTING

The WJCC is now indexed in PubMed, PubMed Central, Science Citation Index Expanded (also known as SciSearch®), and Journal Citation Reports/Science Edition. The 2019 Edition of Journal Citation Reports cites the 2018 impact factor for WJCC as 1.153 (5-year impact factor: N/A), ranking WJCC as 99 among 160 journals in Medicine, General and Internal (quartile in category Q3).

RESPONSIBLE EDITORS FOR THIS ISSUE

Responsible Electronic Editor: *Yan-Xia Xing*

Proofing Production Department Director: *Xiang Li*

NAME OF JOURNAL

World Journal of Clinical Cases

ISSN

ISSN 2307-8960 (online)

LAUNCH DATE

April 16, 2013

FREQUENCY

Semimonthly

EDITORS-IN-CHIEF

Dennis A Bloomfield, Bao-Gan Peng, Sandro Vento

EDITORIAL BOARD MEMBERS

<https://www.wjnet.com/2307-8960/editorialboard.htm>

EDITORIAL OFFICE

Jin-Lei Wang, Director

PUBLICATION DATE

December 6, 2019

COPYRIGHT

© 2019 Baishideng Publishing Group Inc

INSTRUCTIONS TO AUTHORS

<https://www.wjnet.com/bpg/gerinfo/204>

GUIDELINES FOR ETHICS DOCUMENTS

<https://www.wjnet.com/bpg/GerInfo/287>

GUIDELINES FOR NON-NATIVE SPEAKERS OF ENGLISH

<https://www.wjnet.com/bpg/gerinfo/240>

PUBLICATION MISCONDUCT

<https://www.wjnet.com/bpg/gerinfo/208>

ARTICLE PROCESSING CHARGE

<https://www.wjnet.com/bpg/gerinfo/242>

STEPS FOR SUBMITTING MANUSCRIPTS

<https://www.wjnet.com/bpg/GerInfo/239>

ONLINE SUBMISSION

<https://www.f6publishing.com>



Radiological aspects of giant hepatocellular adenoma of the left liver: A case report

Li-Ping Zheng, Chun-Dong Hu, Jing Wang, Xu-Jian Chen, Yi-Yu Shen

ORCID number: Li-Ping Zheng (0000-0002-4452-0417); Chun-Dong Hu (0000-0003-0042-5634); Jing Wang (0000-0002-9325-2834); Xu-Jian Chen (0000-0003-2446-3491); Yi-Yu Shen (0000-0002-5789-0003).

Author contributions: Zheng LP and Shen YY designed the case report; Zheng LP, Hu CD, and Wang J collected the clinical data of the patient; Chen XJ analyzed the data; Zheng LP wrote the manuscript.

Informed consent statement: Written informed consent was obtained from the patient for publication of this case report and accompanying images.

Conflict-of-interest statement: The authors declare that they have no conflict of interest.

CARE Checklist (2016) statement: The authors have read the CARE Checklist (2016), and the manuscript was prepared and revised according to the CARE Checklist (2016).

Open-Access: This article is an open-access article which was selected by an in-house editor and fully peer-reviewed by external reviewers. It is distributed in accordance with the Creative Commons Attribution Non Commercial (CC BY-NC 4.0) license, which permits others to distribute, remix, adapt, build upon this work non-commercially, and license their derivative works on different terms, provided the original work is properly cited and the use is non-commercial. See: <http://creativecommons.org/licenses/by-nc/4.0/>

Li-Ping Zheng, Chun-Dong Hu, Jing Wang, Xu-Jian Chen, Yi-Yu Shen, Department of General Surgery, The Second Affiliated Hospital of Jiaxing University, Jiaxing 314000, Zhejiang Province, China

Corresponding author: Yi-Yu Shen, MD, Chief Doctor, Department of General Surgery, The Second Affiliated Hospital of Jiaxing University, 1518 Huancheng North Road, Jiaxing 314000, Zhejiang Province, China. drzlping@126.com
Telephone: +86-18767393971

Abstract

BACKGROUND

Hepatocellular adenoma (HCA) is very rare and has a high misdiagnosis rate through clinical and imaging examinations. We report a case of giant HCA of the left liver in a young woman that was diagnosed by medical imaging and pathology.

CASE SUMMARY

A 21-year-old woman was admitted to our department for a giant hepatic tumor measuring 22 cm × 20 cm × 10 cm that completely replaced the left hepatic lobe. Her laboratory data only suggested mildly elevated liver function parameters and C-reactive protein levels. A computed tomography (CT) scan showed mixed density in the tumor. Magnetic resonance imaging (MRI) of the tumor revealed a heterogeneous hypointensity on T1-weighted MR images and heterogeneous hyperintensity on T2-weighted MR images. On dynamic contrast CT and MRI scans, the tumor presented marked enhancement and the subcapsular feeding arteries were clearly visible in the arterial phase, with persistent enhancement in the portal and delayed phases. Moreover, the tumor capsule was especially prominent on T1-weighted MR images and showed marked enhancement in the delayed phase. Based on these imaging manifestations, the tumor was initially considered to be an HCA. Subsequently, the tumor was completely resected and pathologically diagnosed as an HCA.

CONCLUSION

HCA is an extremely rare hepatic tumor. Preoperative misdiagnoses were common not only due to the absence of special clinical manifestations and laboratory examination findings, but also due to the clinicians' lack of practical diagnostic experience and vigilance in identifying HCA on medical images. Our case highlights the importance of the combination of contrast-enhanced CT and MRI in the preoperative diagnosis of HCA.

ses/by-nc/4.0/

Manuscript source: Unsolicited manuscript**Received:** September 27, 2019**Peer-review started:** September 27, 2019**First decision:** October 24, 2019**Revised:** November 16, 2019**Accepted:** November 20, 2019**Article in press:** November 20, 2019**Published online:** December 6, 2019**P-Reviewer:** El-Razek AA, Ribeiro MA**S-Editor:** Dou Y**L-Editor:** Wang TQ**E-Editor:** Xing YX**Key words:** Hepatocellular adenoma; Computed tomography; Magnetic resonance imaging; Case report; Differential diagnosis; Pathology

©The Author(s) 2019. Published by Baishideng Publishing Group Inc. All rights reserved.

Core tip: Hepatocellular adenoma (HCA) is not easily identifiable due to its rarity and atypical presentations. Herein, we provide a successful example of a preoperative diagnosis of a giant HCA in a young woman that was found by physical examination. Our case emphasizes that the visualization of the subcapsular feeding arteries in the arterial phase, the conspicuous capsule on T1-weighted magnetic resonance (MR) images, and the markedly enhanced capsule on the delayed-phase MR images can be the important characteristics for the preoperative diagnosis of HCA.

Citation: Zheng LP, Hu CD, Wang J, Chen XJ, Shen YY. Radiological aspects of giant hepatocellular adenoma of the left liver: A case report. *World J Clin Cases* 2019; 7(23): 4111-4118

URL: <https://www.wjgnet.com/2307-8960/full/v7/i23/4111.htm>

DOI: <https://dx.doi.org/10.12998/wjcc.v7.i23.4111>

INTRODUCTION

Hepatocellular adenoma (HCA), also known as hepatic adenoma, is a rare benign tumor of the liver, which can be divided into two categories: Congenital and acquired. Congenital HCA is more common in infants and may stem from the unconnected isolated embryonic hepatocytes. Acquired HCA occurs mostly in young women with a history of oral contraceptive use, with an estimated incidence of 3-4 per 100000 women^[1,2]. This may be due to the fact that oral contraceptives promote necrosis of hepatocytes and regeneration of nodules, leading to the development of HCA. However, other predisposing factors, such as androgen treatment, diabetes mellitus, and glycogen storage disease, have been gradually recognized^[3-5].

In the early stage of the disease, HCA rarely causes clinical symptoms or has laboratory indicators of abnormal function, most of which are found in physical examinations. The diagnoses of HCA mainly depend on imaging examinations, but in fact, the misdiagnosis rate of the disease by imaging is very high. Liver biopsy is helpful for definite preoperative diagnosis and reduction of misdiagnosis, but there is still some controversy because of its risk of intertumoral and intraperitoneal bleeding and iatrogenic spread of malignancies.

HCA is a group of heterogeneous tumors. According to the characteristics of genotype or immunophenotype, HCA can be classified into four different molecular subtypes, namely, hepatocyte nuclear factor-1 α -inactivated HCA (subtype H-HCA), beta-catenin-activated HCA (subtype b-HCA), inflammatory HCA (subtype I-HCA), and unclassified HCA. Approximately 10% of subtype I-HCA cases coexist with a subtype b-HCA^[6,7]. The most important complications of HCA are spontaneous hemorrhage and malignant transformation to hepatocellular carcinoma (HCC)^[8,9]. The risk factors for HCC from HCA include large tumor size (>5 cm) and β -catenin-activated subtype^[10]. Therefore, HCA must be identified and treated promptly.

In our case, the giant hepatic tumor of the patient was found by physical examination without etiology. After computed tomography (CT) and magnetic resonance imaging (MRI) scans, an initial diagnosis of HCA was made. Resection of the tumor was performed, and the tumor was pathologically diagnosed as HCA. Our case emphasizes that visualization of the tumor-feeding arteries in the arterial phase, the conspicuous capsule on T1-weighted MR images, and the markedly enhanced capsule on the delayed-phase MR images can be the important characteristics for the preoperative diagnosis of HCA.

CASE PRESENTATION

Chief complaints

A 21-year-old woman was admitted to our department for a giant hepatic tumor that was found one month prior during a physical examination.

History of present illness

One month ago, an ultrasound examination at a local hospital revealed a giant hepatic tumor. However, the patient did not experience any obvious abdominal pain, distention, nausea, vomiting, chills, or fever.

History of past illness

She denied a medical history of oral contraceptive use, hepatitis, metabolic disorders, and immunodeficiency diseases.

Personal and family history

The patient was unmarried, and her last menstrual period ended 11 d before admission. No additional family history was presented.

Physical examination

The patient's sclera was not stained yellow and superficial lymph nodes were not enlarged. Her abdominal examination showed that her abdomen was flat and soft, and there was no obvious tenderness throughout her abdomen. The lower margin of the liver was palpable 15 cm below the xiphoid, but the spleen was not palpable.

Laboratory examinations

Routine blood, kidney function, and coagulation function tests as well as the levels of tumor markers such as alpha-fetoprotein (AFP; 2.7 ng/mL, reference range 0-20 ng/mL), carcinoembryonic antigen (CEA; 0.71 ng/mL, reference range 0-5 ng/mL), and CA19-9 (2.39 ng/mL, reference range 0-37 ng/mL) were all within normal ranges. The C-reactive protein level was mildly elevated (8.25 mg/L, reference range 0-8 mg/mL). The liver function test revealed mildly elevated gamma-glutamyl transpeptidase and alkaline phosphatase (gamma-glutamyl transpeptidase, 309 IU/L, reference range 10-60 IU/L; alkaline phosphatase, 182 IU/L, reference range 42-125 IU/L). The hepatitis A-E markers were all negative.

Imaging examinations

A CT scan performed at our hospital revealed a giant hepatic tumor measuring 22 cm × 20 cm × 10 cm, which completely replaced the left hepatic lobe. On non-contrast enhanced CT, the tumor showed a heterogeneous hypodensity, with a clear boundary (Figure 1A). On the contrast-enhanced CT, the tumor presented with patchy or nodular enhancement and the subcapsular feeding arteries were visible in the arterial phase (Figure 1B, arrow), which became intensified and hyper-attenuated in the portal phase (Figure 1C). However, some regions of the tumor were not enhanced in the arterial and portal phases.

To further diagnose the patient's condition, MRI was also performed. On T1-weighted MR images, the tumor appeared heterogeneous hypointense with a complete capsule (Figure 2A, arrow). On T2-weighted MR images, diffusion-weighted imaging, and multiplanar reconstruction images, the tumor appeared heterogeneous hyperintense (Figure 2B, 2C, and 2F). Following an injection of Gd-DTPA, the tumor presented with heterogeneous enhancement and the subcapsular feeding arteries were also visible in the arterial phase (Figure 2D, arrow). In the delayed phase, the tumor had more intense enhancement over a larger range than in the arterial phase, and the capsule was significantly enhanced (Figure 2E, arrow).

FINAL DIAGNOSIS

Based on these imaging manifestations, the tumor was initially diagnosed as an HCA.

TREATMENT

The patient had surgical indications because of the giant tumor size and the risk of rupture and hemorrhage. To examine if the remnant liver weight could meet the needs of the patient's body, we performed a preoperative assessment by CT. The results showed that the remnant liver weight (>500 g, patient's weight was 50 kg) could meet the needs of the patient's body. Therefore, surgery was performed, and the patient underwent surgery for extracapsular blunt separation with vascular isolation of the liver. Finally, the tumor was completely resected.

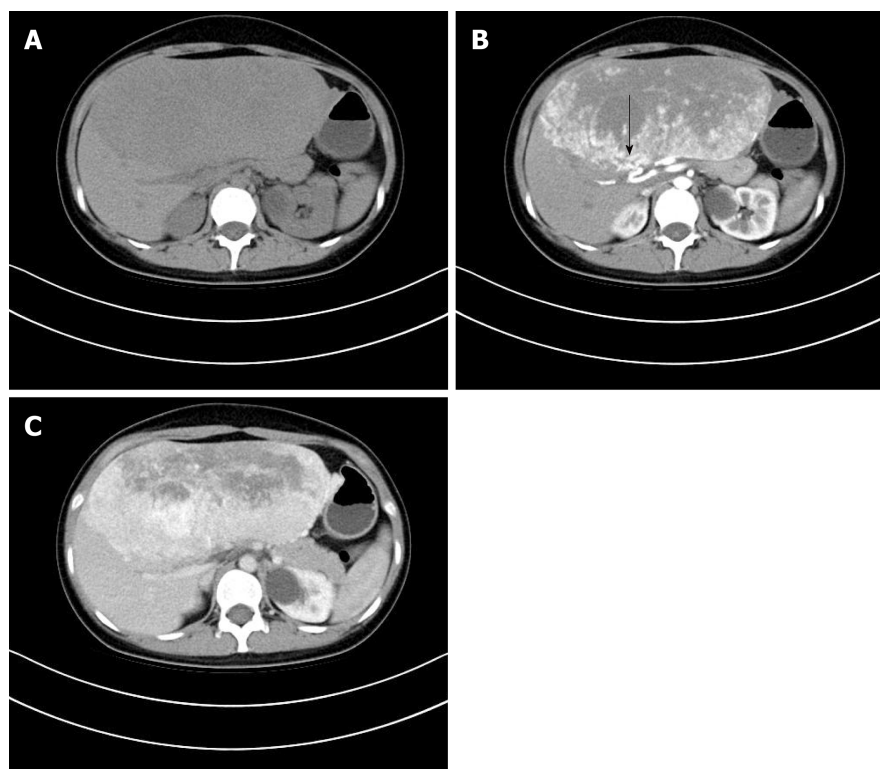


Figure 1 Hepatocellular adenoma on computed tomography scans. A: Unenhanced scan; B: Arterial phase of contrast-enhanced scan. A feeding artery was visible on the verge of the tumor (arrow); C: Portal phase of contrast-enhanced scan.

OUTCOME AND FOLLOW-UP

The patient recovered without complications. The hepatectomy specimen presented as a well-defined grayish yellow tumor with large surface vessels and a complete fibrous capsule, and varying degrees of hemorrhage and necrosis could be observed in the center of the tumor (Figure 3A-C). Microscopically, normal hepatic lobule structures were not found in the tumor, and the hepatocytes contained uniform magnitude without mitotic figures and thus resembled normal hepatocytes. Hepatic cords of the tumor comprised one or two layers of cells. Hyperemia edema was found in the tumor mesenchyme with scattered lymphoplasmacytic infiltration. In parts of the liver sinusoid, obvious dilation, hyperemia, and hemorrhages could be observed. There was no obvious cirrhosis and no dilated bile ducts were found. The tumor was pathologically diagnosed as an HCA (Figure 3D).

Now, the young woman is working and living normally and has not relapsed during a year of re-examinations.

DISCUSSION

HCA is occult at onset and lacks of specific clinical manifestations and laboratory examination findings. Since most scholars are cautious about liver biopsy, the preoperative diagnosis of HCA mainly depends on imaging examinations. However, the imaging manifestations of HCA are so diverse that the misdiagnosis rate is very high.

On non-contrast CT, typical HCA appears isodense or slightly hypodense, with a clear boundary. However, HCA appeared hyperdense under the background of the fatty liver. Large HCA could oppress the adjacent hepatic parenchyma to form a capsule, but the capsule is not easily visible. HCA easily leads to bleeding and necrosis, and the areas of hemorrhage show a hyperdensity in the acute or subacute phase, while the areas of old hemorrhagic necrosis show a hypodensity. On contrast-enhanced CT, the whole tumor appears homogeneously hyperdense in the arterial phase^[11], but the incidence of this characteristic appearance gradually declines as the diameter increases. Hemorrhagic necrotic areas are not enhanced. Sometimes, the subcapsular feeding arteries can be seen^[12]. In the portal and delayed phases, typical

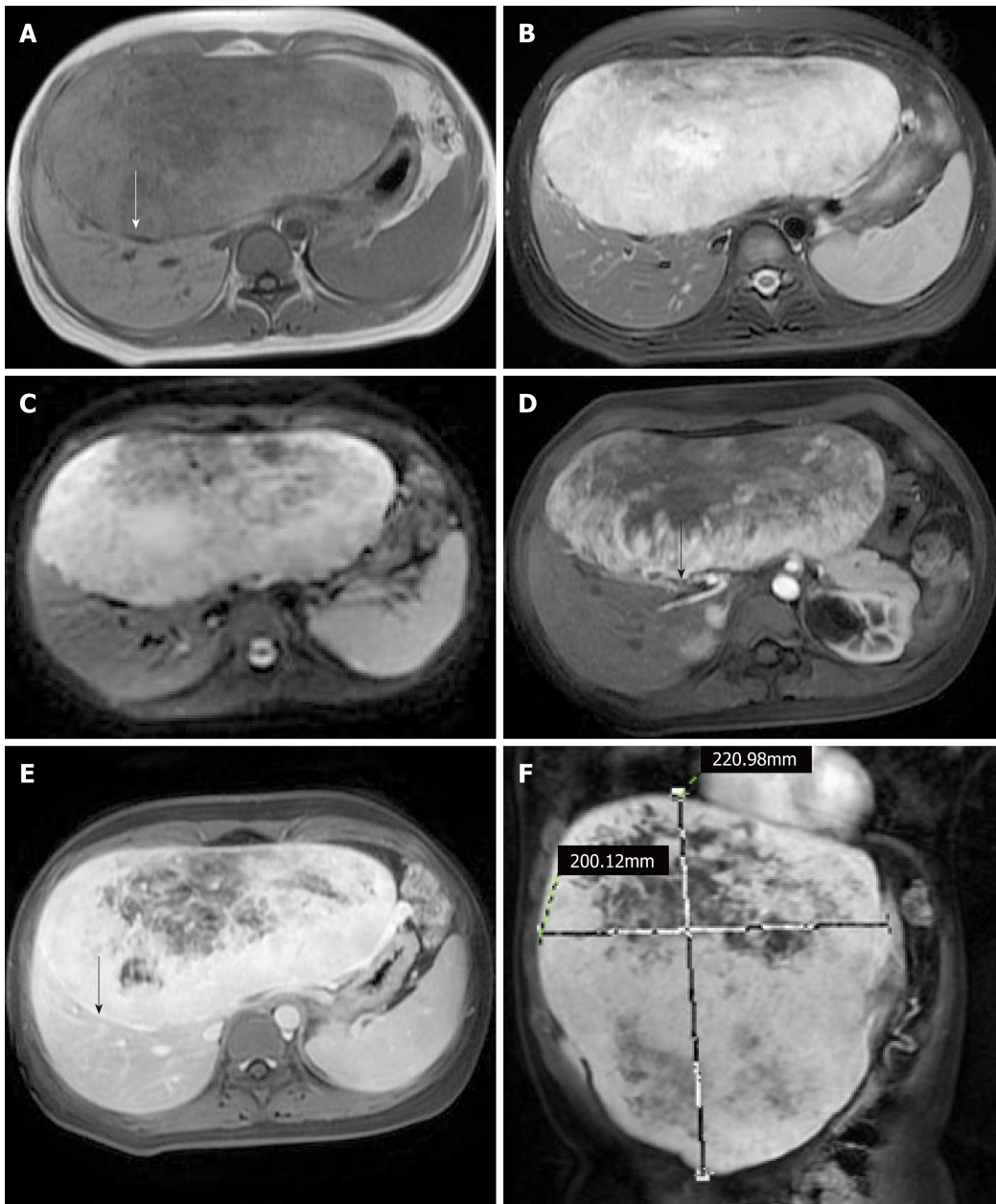


Figure 2 Hepatocellular adenoma on magnetic resonance imaging scans. A: T1-weighted image. The fibrous capsule of the tumor was clearly visible (arrow); B: T2-weighted image; C: Diffusion-weighted imaging; D: Arterial phase of contrast-enhanced scan. Feeding arteries were visible on the verge of the tumor (arrow); E: Delayed phase of contrast-enhanced scan. The fibrous capsule of the tumor was markedly enhanced (arrow); F: Multiplanar reconstruction.

HCA appears isodense or slightly hypodense^[11].

On MRI, there are several heterogeneous signal ranges for most of HCA. For HCA, the fat component and short-term hemorrhage areas appear hyperintense, and old hemorrhage and necrotic areas appear hypointense on T1-weighted MR images. Large HCA tends to compress the adjacent liver parenchyma and form a pseudocapsule, and the low-signal capsule at the lesion edge on T1-weighted MR images is the most obvious, showing an annular hypointensity. The mixed signals on T2-weighted MR images are predominantly slightly hyperintense. Dynamic gadolinium-enhanced gradient-echo MR imaging, like dynamic CT, can reflect the blood supply of HCA. The enhancement characteristics of HCA are closely related to the genotype/phenotype^[13,14]. Subtype H-HCA presents as slightly heterogeneous enhancement in the arterial and portal phases and hypointense enhancement in the delayed phase, which is predominantly related to the fatty degeneration, lack of inflammatory cells, and dilated sinusoid. Subtype b-HCA presents as highly heterogeneous enhancement in the arterial and portal phases and heterogeneous hypointense enhancement in the delayed phase. The enhancement is characterized by very heterogeneous enhancement and rapid clearance in some areas of the lesion, which is related to the presence of heteromorphic cells and acinar cells. Subtype I-

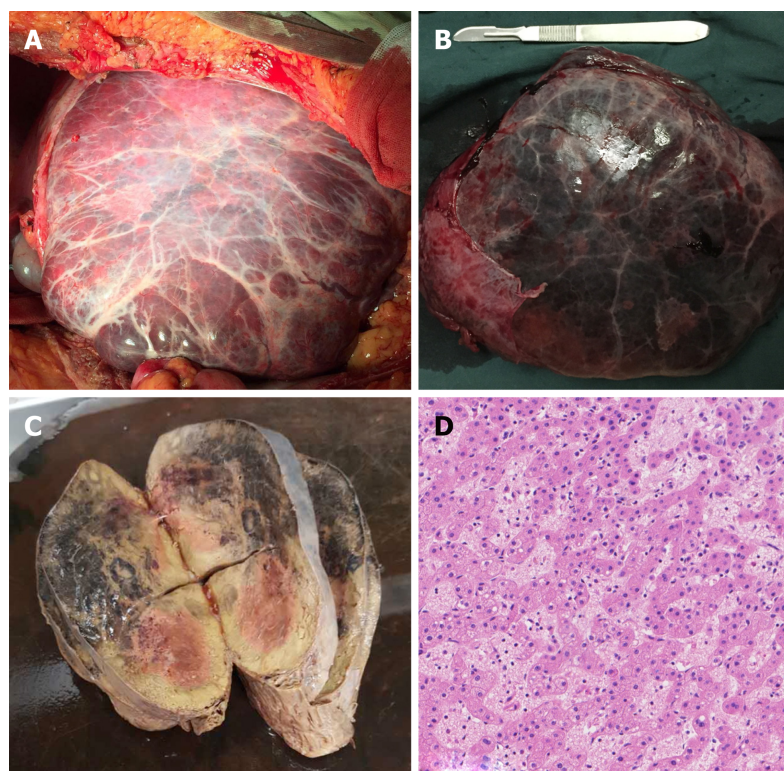


Figure 3 Gross pathological and histological findings of hepatocellular adenoma. A: *In situ* hepatocellular adenoma (HCA); B: View of resected HCA; C: Cut surface of resected HCA; D: Histology of resected HCA (HE staining, 100×).

HCA mainly presents as significant enhancement in the arterial phase and persistent enhancement in the portal and delayed phases, which is related to the pathological basis of inflammatory cell infiltration and blood sinus dilatation.

HCA should be differentiated from HCC, focal nodular hyperplasia (FNH), hepatic angioleiomyoma (HAML), and hepatic hemangioma (HCH)^[15-17]. HCC is usually associated with hepatitis and cirrhosis, demonstrates expansive growth, oppresses all surrounding tissues, and forms pseudocapsules. Serum AFP levels are significantly elevated in most cases. Contrast-enhanced scans suggest the enhancement characteristics of fast-in and fast-out.

FNH is a hypervascular tumor that mainly occurs in young women, without a capsule or hemorrhagic necrosis. On non-contrast enhanced CT scans, FNH appear iso- or slightly hypodense. On the contrast-enhanced CT, the enhancement is characterized by uniform enhancement except in scar tissue. Some lesions may show a supply artery located at the periphery or center of the lesion. FNH shows an iso- or slightly hypodensity in the portal and delayed phases, and delayed enhancement of the central scar is characteristic^[18]. On T1-weighted MR images, FNH shows an isointense or slightly reduced signal and the center scar shows a reduced signal. On T2-weighted MRI images, FNH shows an isointensity or hyperintensity, and the center scar shows an elevated signal.

HAML is a rare benign, mesenchymal tumor that commonly occurs in young women, without hepatitis or cirrhosis. HAML is composed of different proportions of adipose tissues, thick-walled blood vessels, and smooth muscle cells, and the imaging features depend on the proportion of adipose tissues and abnormal blood vessels. Contrast-enhanced scans of HAML show hypervascular lesions with a point-strip vascular image and a focal or patchy fat component. However, the differential diagnosis of HAML from other fat-containing and hypervascular lesions is very difficult in fact. Recent research has shown that the presence of an early drainage vein is anticipated as a useful feature for distinguishing HAML from HCA^[19].

HCH is the most common benign tumor that is mainly seen in adult females, without hepatitis, cirrhosis, or a capsule, but with a central scar. Contrast-enhanced scans suggest the characteristics of fast-in and slow-out, and a central scar without enhancement. The presence of an extremely bright signal on T2-weighted MR images is helpful in distinguishing HCH from HCA.

In our case, the patient's tumor was found by physical examination without etiology. The CT and MRI findings presented as the enhanced features of fast-in and

slow-out. Some unenhanced areas suggested hemorrhagic necrosis. The tumor-feeding arteries were connected to the markedly enhanced lesions in the arterial phase. Ichikawa *et al*^[20] reported that this sign is the characteristic manifestation of HCA. Moreover, the capsule of the tumor was especially prominent on the T1-weighted MR images and showed marked enhancement in the delayed phase. Studies^[21,22] have shown that these features are the characteristic imaging manifestations of HCA. Based on the above imaging findings, the tumor was initially identified as an HCA and subsequently confirmed pathologically.

CONCLUSION

We report a case of giant HCA of the left liver in a young woman. Our case highlights the importance of a combination of contrast-enhanced CT and MRI in the preoperative diagnosis of HCA. We expect that a detailed description of this case will provide valuable resources for the future diagnosis of HCA.

ACKNOWLEDGEMENTS

We wish to acknowledge Ya-Wei Yu and Quan Zhou (Department of Pathology, The Second Affiliated Hospital of Jiaxing University, Jiaxing) for her support on this case in pathology.

REFERENCES

- 1 **Haring MPD**, Gouw ASH, de Haas RJ, Cuperus FJC, de Jong KP, de Meijer VE. The effect of oral contraceptive pill cessation on hepatocellular adenoma diameter: A retrospective cohort study. *Liver Int* 2019; **39**: 905-913 [PMID: [30773766](#) DOI: [10.1111/liv.14074](#)]
- 2 **Bioulac-Sage P**, Balabaud C, Zucman-Rossi J. Focal nodular hyperplasia, hepatocellular adenomas: past, present, future. *Gastroenterol Clin Biol* 2010; **34**: 355-358 [PMID: [20537479](#) DOI: [10.1016/j.gcb.2010.03.014](#)]
- 3 **Kato K**, Abe H, Hanawa N, Fukuzawa J, Matsuo R, Yonezawa T, Itoh S, Sato Y, Ika M, Shimizu S, Endo S, Hano H, Izu A, Sugitani M, Tsubota A. Hepatocellular adenoma in a woman who was undergoing testosterone treatment for gender identity disorder. *Clin J Gastroenterol* 2018; **11**: 401-410 [PMID: [29589251](#) DOI: [10.1007/s12328-018-0854-4](#)]
- 4 **Hirata E**, Shimizu S, Umeda S, Kobayashi T, Nakano M, Higuchi H, Serizawa H, Iwasaki N, Morinaga S, Tsunematsu S. [Hepatocyte nuclear factor 1 α -inactivated hepatocellular adenomatosis in a patient with maturity-onset diabetes of the young type 3: case report and literature review]. *Nihon Shokakibyo Gakkai Zasshi* 2015; **112**: 1696-1704 [PMID: [26346360](#) DOI: [10.11405/nissoshoshi.112.1696](#)]
- 5 **Baheti AD**, Yeh MM, O'Malley R, Lalwani N. Malignant Transformation of Hepatic Adenoma in Glycogen Storage Disease Type-1a: Report of an Exceptional Case Diagnosed on Surveillance Imaging. *J Clin Imaging Sci* 2015; **5**: 47 [PMID: [26430540](#) DOI: [10.4103/2156-7514.163991](#)]
- 6 **Bioulac-Sage P**, Sempoux C, Balabaud C. Hepatocellular adenoma: Classification, variants and clinical relevance. *Semin Diagn Pathol* 2017; **34**: 112-125 [PMID: [28131467](#) DOI: [10.1053/j.semdp.2016.12.007](#)]
- 7 **Margolskee E**, Bao F, de Gonzalez AK, Moreira RK, Lagana S, Sireci AN, Sepulveda AR, Remotti H, Lefkowitz JH, Salomao M. Hepatocellular adenoma classification: a comparative evaluation of immunohistochemistry and targeted mutational analysis. *Diagn Pathol* 2016; **11**: 27 [PMID: [26961851](#) DOI: [10.1186/s13000-016-0475-5](#)]
- 8 **Klompenerhouwer AJ**, de Man RA, Thomeer MG, Ijzermans JN. Management and outcome of hepatocellular adenoma with massive bleeding at presentation. *World J Gastroenterol* 2017; **23**: 4579-4586 [PMID: [28740346](#) DOI: [10.3748/wjg.v23.i25.4579](#)]
- 9 **An SL**, Wang LM, Rong WQ, Wu F, Sun W, Yu WB, Feng L, Liu FQ, Tian F, Wu JX. Hepatocellular adenoma with malignant transformation in male patients with non-cirrhotic livers. *Chin J Cancer* 2015; **34**: 217-224 [PMID: [26058379](#) DOI: [10.1186/s40880-015-0014-x](#)]
- 10 **Stoot JH**, Coelen RJ, De Jong MC, Dejong CH. Malignant transformation of hepatocellular adenomas into hepatocellular carcinomas: a systematic review including more than 1600 adenoma cases. *HPB (Oxford)* 2010; **12**: 509-522 [PMID: [20887318](#) DOI: [10.1111/j.1477-2574.2010.00222.x](#)]
- 11 **Wang W**, Liu JY, Yang Z, Wang YF, Shen SL, Yi FL, Huang Y, Xu EJ, Xie XY, Lu MD, Wang Z, Chen LD. Hepatocellular adenoma: comparison between real-time contrast-enhanced ultrasound and dynamic computed tomography. *Springerplus* 2016; **5**: 951 [PMID: [27386395](#) DOI: [10.1186/s40064-016-2406-z](#)]
- 12 **Grazioli L**, Federle MP, Brancatelli G, Ichikawa T, Olivetti L, Blachar A. Hepatic adenomas: imaging and pathologic findings. *Radiographics* 2001; **21**: 877-92; discussion 892-4 [PMID: [11452062](#)]
- 13 **Thomeer MG**, E Bröker ME, de Lussanet Q, Biermann K, Dwarkasing RS, de Man R, Ijzermans JN, de Vries M. Genotype-phenotype correlations in hepatocellular adenoma: an update of MRI findings. *Diagn Interv Radiol* 2014; **20**: 193-199 [PMID: [24509184](#) DOI: [10.5152/dir.2013.13315](#)]
- 14 **Khanna M**, Ramanathan S, Fasih N, Schieda N, Virmani V, McInnes MD. Current updates on the molecular genetics and magnetic resonance imaging of focal nodular hyperplasia and hepatocellular adenoma. *Insights Imaging* 2015; **6**: 347-362 [PMID: [25790815](#) DOI: [10.1007/s13244-015-0399-8](#)]
- 15 **Choi WT**, Ramachandran R, Kakar S. Immunohistochemical approach for the diagnosis of a liver mass on small biopsy specimens. *Hum Pathol* 2017; **63**: 1-13 [PMID: [28087475](#) DOI: [10.1016/j.humpath.2016.12.025](#)]
- 16 **Yoshioka M**, Watanabe G, Uchinami H, Kudoh K, Hiroshima Y, Yoshioka T, Nanjo H, Funaoka M, Yamamoto Y. Hepatic angiomylipoma: differential diagnosis from other liver tumors in a special

- reference to vascular imaging - importance of early drainage vein. *Surg Case Rep* 2015; **1**: 11 [PMID: 26943379 DOI: 10.1186/s40792-014-0008-y]
- 17 **Nagy G**, Dezső K, Kiss G, Gerlei Z, Nagy P, Kóbori L. [Benign liver tumours - current diagnostics and therapeutic modalities]. *Magy Onkol* 2018; **62**: 5-13 [PMID: 29570181]
- 18 **Vyas M**, Jain D. A practical diagnostic approach to hepatic masses. *Indian J Pathol Microbiol* 2018; **61**: 2-17 [PMID: 29567877 DOI: 10.4103/IJPM.IJPM_578_17]
- 19 **Iwao Y**, Ojima H, Onaya H, Sakamoto Y, Kishi Y, Nara S, Esaki M, Mizuguchi Y, Ushigome M, Asahina D, Hiraoka N, Shimada K, Kosuge T, Kanai Y. Early venous return in hepatic angiomyolipoma due to an intratumoral structure resembling an arteriovenous fistula. *Hepatol Res* 2014; **44**: 700-706 [PMID: 23679956 DOI: 10.1111/hepr.12163]
- 20 **Ichikawa T**, Federle MP, Grazioli L, Nalesnik M. Hepatocellular adenoma: multiphasic CT and histopathologic findings in 25 patients. *Radiology* 2000; **214**: 861-868 [PMID: 10715059]
- 21 **Brancatelli G**, Federle MP, Vullierme MP, Lagalla R, Midiri M, Vilgrain V. CT and MR imaging evaluation of hepatic adenoma. *J Comput Assist Tomogr* 2006; **30**: 745-750 [PMID: 16954922]
- 22 **Katabathina VS**, Menias CO, Shanbhogue AK, Jagirdar J, Paspulati RM, Prasad SR. Genetics and imaging of hepatocellular adenomas: 2011 update. *Radiographics* 2011; **31**: 1529-1543 [PMID: 21997980 DOI: 10.1148/rg.316115527]



Published By Baishideng Publishing Group Inc
7041 Koll Center Parkway, Suite 160, Pleasanton, CA 94566, USA
Telephone: +1-925-2238242
E-mail: bpgoffice@wjgnet.com
Help Desk: <https://www.f6publishing.com/helpdesk>
<https://www.wjgnet.com>

