

World Journal of *Gastroenterology*

World J Gastroenterol 2020 February 28; 26(8): 777-882



**REVIEW**

- 777 Therapies to modulate gut microbiota: Past, present and future
Gupta A, Saha S, Khanna S

ORIGINAL ARTICLE**Basic Study**

- 789 Promising key genes associated with tumor microenvironments and prognosis of hepatocellular carcinoma
Pan L, Fang J, Chen MY, Zhai ST, Zhang B, Jiang ZY, Juengpanich S, Wang YF, Cai XJ
- 804 Downregulation of orosomucoid 2 acts as a prognostic factor associated with cancer-promoting pathways in liver cancer
Zhu HZ, Zhou WJ, Wan YF, Ge K, Lu J, Jia CK

Retrospective Study

- 818 Neoadjuvant chemotherapy *vs* upfront surgery for gastric signet ring cell carcinoma: A retrospective, propensity score-matched study
Li Y, Ma FH, Xue LY, Tian YT
- 828 Haemoglobin, albumin, lymphocyte and platelet predicts postoperative survival in pancreatic cancer
Xu SS, Li S, Xu HX, Li H, Wu CT, Wang WQ, Gao HL, Jiang W, Zhang WH, Li TJ, Ni QX, Liu L, Yu XJ
- 839 Prognostic value of preoperative weight loss-adjusted body mass index on survival after esophagectomy for esophageal squamous cell carcinoma
Zhang HL, Yang YS, Duan JN, Shang QX, He SL, Gu YM, Hu WP, Wang WP, Hu Y, Wang Y, Yuan Y, Chen LQ

Observational Study

- 850 Diverting colostomy is an effective and reversible option for severe hemorrhagic radiation proctopathy
Yuan ZX, Qin QY, Zhu MM, Zhong QH, Fichera A, Wang H, Wang HM, Huang XY, Cao WT, Zhao YB, Wang L, Ma TH

META-ANALYSIS

- 865 Surgical outcome of laparoscopic sleeve gastrectomy and Roux-en-Y gastric bypass for resolution of type 2 diabetes mellitus: A systematic review and meta-analysis
Guraya SY, Strate T

CASE REPORT

- 877 Diagnosis and management of a solitary colorectal juvenile polyp in an adult during follow-up for ulcerative colitis: A case report
Chen YW, Tu JF, Shen WJ, Chen WY, Dong J

ABOUT COVER

Associate Editor of *World Journal of Gastroenterology*, Chisato Hamashima, MD, PhD, Doctor, Professor, Faculty of Medical Tecnology, Teikyo University, Tokyo 1738605, Japan

AIMS AND SCOPE

The primary aim of *World Journal of Gastroenterology* (WJG, *World J Gastroenterol*) is to provide scholars and readers from various fields of gastroenterology and hepatology with a platform to publish high-quality basic and clinical research articles and communicate their research findings online.

WJG mainly publishes articles reporting research results and findings obtained in the field of gastroenterology and hepatology and covering a wide range of topics including gastroenterology, hepatology, gastrointestinal endoscopy, gastrointestinal surgery, gastrointestinal oncology, and pediatric gastroenterology.

INDEXING/ABSTRACTING

The WJG is now indexed in Current Contents®/Clinical Medicine, Science Citation Index Expanded (also known as SciSearch®), Journal Citation Reports®, Index Medicus, MEDLINE, PubMed, PubMed Central, and Scopus. The 2019 edition of Journal Citation Report® cites the 2018 impact factor for WJG as 3.411 (5-year impact factor: 3.579), ranking WJG as 35th among 84 journals in gastroenterology and hepatology (quartile in category Q2). CiteScore (2018): 3.43.

RESPONSIBLE EDITORS FOR THIS ISSUE

Responsible Electronic Editor: *Yan-Liang Zhang*

Proofing Production Department Director: *Yun-Xiaojuan Wu*

NAME OF JOURNAL

World Journal of Gastroenterology

ISSN

ISSN 1007-9327 (print) ISSN 2219-2840 (online)

LAUNCH DATE

October 1, 1995

FREQUENCY

Weekly

EDITORS-IN-CHIEF

Subrata Ghosh, Andrzej S Tarnawski

EDITORIAL BOARD MEMBERS

<http://www.wjgnet.com/1007-9327/editorialboard.htm>

EDITORIAL OFFICE

Ze-Mao Gong, Director

PUBLICATION DATE

February 28, 2020

COPYRIGHT

© 2020 Baishideng Publishing Group Inc

INSTRUCTIONS TO AUTHORS

<https://www.wjgnet.com/bpg/gerinfo/204>

GUIDELINES FOR ETHICS DOCUMENTS

<https://www.wjgnet.com/bpg/GerInfo/287>

GUIDELINES FOR NON-NATIVE SPEAKERS OF ENGLISH

<https://www.wjgnet.com/bpg/gerinfo/240>

PUBLICATION MISCONDUCT

<https://www.wjgnet.com/bpg/gerinfo/208>

ARTICLE PROCESSING CHARGE

<https://www.wjgnet.com/bpg/gerinfo/242>

STEPS FOR SUBMITTING MANUSCRIPTS

<https://www.wjgnet.com/bpg/GerInfo/239>

ONLINE SUBMISSION

<https://www.f6publishing.com>



Basic Study

Promising key genes associated with tumor microenvironments and prognosis of hepatocellular carcinoma

Long Pan, Jing Fang, Ming-Yu Chen, Shu-Ting Zhai, Bin Zhang, Zhi-Yu Jiang, Sarun Juengpanich, Yi-Fan Wang, Xiu-Jun Cai

ORCID number: Long Pan (0000-0003-1550-8280); Jing Fang (0000-0001-5914-8163); Ming-Yu Chen (0000-0001-5113-754X); Shu-Ting Zhai (0000-0001-6569-0637); Bin Zhang (0000-0002-6888-811X); Zhi-Yu Jiang (0000-0001-7771-750X); Sarun Juengpanich (0000-0002-1449-5564); Yi-Fan Wang (0000-0002-8828-4268); Xiu-Jun Cai (0000-0002-6457-0577).

Author contributions: All authors designed the research; Zhai ST, Zhang B, and Jiang ZY collected the data; Pan L and Fang J performed the statistical analysis and wrote the paper; Chen MY, Juengpanich S, Wang YF, and Cai XJ revised the paper.

Institutional review board statement: This study was reviewed and approved by the Ethics Committee of Sir Run Run Shaw Hospital.

Conflict-of-interest statement: All the authors declare no conflicts of interest related to this article.

Open-Access: This article is an open-access article that was selected by an in-house editor and fully peer-reviewed by external reviewers. It is distributed in accordance with the Creative Commons Attribution NonCommercial (CC BY-NC 4.0) license, which permits others to distribute, remix, adapt, build upon this work non-commercially, and license their derivative works on different terms, provided the original work is properly cited and the use is non-commercial. See: <https://creativecommons.org/licenses/by-nc/4.0/>

Long Pan, Jing Fang, Ming-Yu Chen, Shu-Ting Zhai, Bin Zhang, Zhi-Yu Jiang, Sarun Juengpanich, Yi-Fan Wang, Xiu-Jun Cai, Key Laboratory of Laparoscopic Technique Research of Zhejiang Province, Department of General Surgery, Sir Run Run Shaw Hospital, Zhejiang University School of Medicine, Hangzhou 310016, Zhejiang Province, China

Long Pan, Jing Fang, Ming-Yu Chen, Shu-Ting Zhai, Bin Zhang, Yi-Fan Wang, Xiu-Jun Cai, Zhejiang Province Medical Research Center of Minimally Invasive Diagnosis and Treatment of Abdominal Diseases, Hangzhou 310016, Zhejiang Province, China

Corresponding author: Xiu-Jun Cai, MD, PhD, FACS, FRCS, Professor, Surgeon, Key Laboratory of Laparoscopic Technique Research of Zhejiang Province, Department of General Surgery, Sir Run Run Shaw Hospital, Zhejiang University School of Medicine, 3 East Qingchun Road, Jianggan District, Hangzhou 310016, Zhejiang Province, China. srrsh_cxj@zju.edu.cn

Abstract

BACKGROUND

Despite significant advances in multimodality treatments, hepatocellular carcinoma (HCC) remains one of the most common malignant tumors. Identification of novel prognostic biomarkers and molecular targets is urgently needed.

AIM

To identify potential key genes associated with tumor microenvironments and the prognosis of HCC.

METHODS

The infiltration levels of immune cells and stromal cells were calculated and quantified based on the ESTIMATE algorithm. Differentially expressed genes (DEGs) between high and low groups according to immune or stromal scores were screened using the gene expression profile of HCC patients in The Cancer Genome Atlas and were further linked to the prognosis of HCC. These genes were validated in four independent HCC cohorts. Survival-related key genes were identified by a LASSO Cox regression model.

RESULTS

HCC patients with a high immune/stromal score had better survival benefits than patients with a low score. A total of 899 DEGs were identified and found to be involved in immune responses and extracellular matrices, 147 of which were

<http://creativecommons.org/licenses/by-nc/4.0/>

Manuscript source: Invited Manuscript

Received: October 3, 2019

Peer-review started: October 3, 2019

First decision: November 10, 2019

Revised: December 20, 2019

Accepted: February 12, 2020

Article in press: February 12, 2020

Published online: February 28, 2020

P-Reviewer: Kang KJ, Mizuguchi T, Sung WW

S-Editor: Gong ZM

L-Editor: Wang TQ

E-Editor: Ma YJ



associated with overall survival. Subsequently, 52 of 147 survival-related DEGs were validated in additional cohorts. Finally, ten key genes (*STSL2*, *TMC5*, *DOK5*, *RASGRP2*, *NLRC3*, *KLRB1*, *CD5L*, *CFHR3*, *ADH1C*, and *UGT2B15*) were selected and used to construct a prognostic gene signature, which presented a good performance in predicting overall survival.

CONCLUSION

This study extracted a list of genes associated with tumor microenvironments and the prognosis of HCC, thereby providing several valuable directions for the prognostic prediction and molecular targeted therapy of HCC in the future.

Key words: Hepatocellular carcinoma; Tumor microenvironment; Differentially expressed genes; Overall survival

©The Author(s) 2020. Published by Baishideng Publishing Group Inc. All rights reserved.

Core tip: We performed an integrated bioinformatics analysis to assess the influence of tumor microenvironment on the prognosis of patients with hepatocellular carcinoma (HCC). The results found that HCC patients with a high immune/stromal infiltration level had better survival benefits than patients with a low infiltration level. Ten microenvironment-related key genes were screened and used to construct a prognostic gene signature, which presented a good performance in predicting overall survival. Our study provided novel insight into the potential association of tumor microenvironment with HCC prognosis and molecular targeted therapy of HCC in the future.

Citation: Pan L, Fang J, Chen MY, Zhai ST, Zhang B, Jiang ZY, Juengpanich S, Wang YF, Cai XJ. Promising key genes associated with tumor microenvironments and prognosis of hepatocellular carcinoma. *World J Gastroenterol* 2020; 26(8): 789-803

URL: <https://www.wjgnet.com/1007-9327/full/v26/i8/789.htm>

DOI: <https://dx.doi.org/10.3748/wjg.v26.i8.789>

INTRODUCTION

Hepatocellular carcinoma (HCC) is a common malignant tumor and the fifth leading cause of cancer-related death in the United States^[1]. Due to frequent recurrences and metastases, existing treatments show unsatisfactory efficacy. The pathogenesis of HCC is extremely intricate, involving various biological processes, such as signal transduction (*e.g.*, Ras signaling pathways and WNT/ β -catenin pathway) and cell cycle regulation, which displays the interaction among multiple genes in a complex signal network^[2,3]. Recently, numerous studies have demonstrated that tumor microenvironments (TMEs) play an important role in cancer development, including HCC, hence affecting the clinical outcomes^[4-6]. TMEs consist of immune cells, stromal cells, normal endothelial cells, and vascular cells. Stromal and immune cells are two major components of nontumor cells in the TMEs and are considered to be valuable for the prognostic evaluation of tumors^[7,8].

Gene expression profiling has been widely used to identify the potential biomarkers and subsequently construct prognosis models, and it has enriched our knowledge of the underlying molecular mechanisms of tumorigenesis^[9-11]. Yoshihara *et al*^[12] designed the ESTIMATE method using gene expression data to calculate the stromal and immune scores, which can predict infiltration levels of two major nontumor cells in tumor tissues. The ESTIMATE algorithm has been applied to breast cancer and prostate cancer, showing its feasibility and effectiveness^[13,14].

Here, taking advantage of the HCC cohort in The Cancer Genome Atlas (TCGA) database, we used the ESTIMATE method to obtain a list of genes associated with TMEs that predict a poor prognosis in HCC patients. Importantly, such correlation was validated in four different HCC cohorts available from the integrative molecular database of HCC (HCCDB). Key genes were screened by utilizing the LASSO algorithm, and a multigene-based classifier was constructed to further evaluate the relationship between these key genes and the prognosis of HCC.

MATERIALS AND METHODS

Database

The gene expression profile (level 3 data) for HCC patients was acquired from the TCGA data portal (<https://xenabrowser.net/datapages/>), in which the RNA expression in HCC was analyzed using Illumina HiSeq 2000 RNA Sequencing (October 13, 2017). Clinical data, such as gender, age, grade, tumor stage, survival, and outcome, were also downloaded from TCGA data portal. The ESTIMATE algorithm was used to calculate immune scores and stromal scores, and the score data were obtained from the official data portal (<https://bioinformatics.mdanderson.org/estimate/>)^[12]. The abundances of six types of immune cells (B cells, CD4+ T cells, CD8+ T cells, neutrophils, macrophages, and dendritic cells) in the TCGA were acquired *via* the TIMER data portal, a web server for comprehensive analysis of tumor-infiltrating immune cells (<https://cistrome.shinyapps.io/timer/>)^[15,16]. For validation, four HCC datasets were obtained from the HCCDB database (<http://lifeome.net/database/hccdb/home.html>), including three Gene Expression Omnibus datasets (HCCDB6, HCCDB7, and HCCDB17) and one Liver Cancer-RIKEN, Japan Project from International Cancer Genome Consortium (HCCDB18)^[17].

Identification of differentially expressed genes

Data analysis was conducted using the “limma” package in R^[18]. $|\log_2FC| \geq 1$ and $FDR < 0.05$ were considered statistically significant to screen for differentially expressed genes (DEGs).

Functional enrichment of protein-protein interaction network and module analysis of DEGs

Gene annotation and functional analysis of DEGs were performed by utilizing the “clusterProfiler” in R and Metascape website (a gene annotation & analysis resource) (<http://metascape.org>)^[19,20]. The STRING database was applied to construct potential protein-protein interactions among the DEGs^[21]. PPIs with a confidence score ≥ 0.4 were downloaded and reconstructed *via* Cytoscape^[22]. Small networks with less than ten nodes were removed. The connectivity degree of each node in the network was calculated. Moreover, molecular complex detection (MCODE) was performed to detect hub clusters in the PPI network. Gene Ontology (GO) and Kyoto Encyclopedia of Genes and Genomes (KEGG) pathway enrichment analyses were also conducted for significant modules.

Survival analysis

Kaplan-Meier curves were used to estimate the survival differences for patients between the high and low score/risk groups. Univariate Cox proportional hazards regression analyses were conducted to determine the survival-related DEGs. LASSO regression was used to further screen the most powerful prognostic genes. A λ value of 0.066 with $\log(\lambda) = -2.72$ was selected by 5-fold cross-validation *via* 1-SE criteria (Supplementary Figure 1). A prognostic gene signature was constructed according to a linear combination of the relative expression values (Exp_i) and LASSO coefficients (L_i) using the following formula: Risk score = $L_1 \times Exp_1 + L_2 \times Exp_2 + \dots + L_n \times Exp_n$. To classify these HCC patients into the high- or low-risk group, the best cutoff value was calculated when the specificity and sensitivity in the receiver operating characteristic (ROC) curve achieved their maximum for predicting 3-year survival using TCGA data. To further evaluate if the prognostic classifier is an independent indicator in patients with HCC, the effect of each clinicopathologic factor on OS was analyzed by univariate Cox regression. Factors whose P value < 0.05 in the univariate analysis were selected for multivariate analysis. Additionally, to test the performance of the prognostic classifier in predicting HCC clinical outcomes, we calculated the area under the curve (AUC) to measure the predictive ability and compared gene signatures with other clinicopathologic features, including TNM stages. All statistical analyses were carried out with R (version 3.6.0) and GraphPad Prism 7 (GraphPad Software Inc., United States).

RESULTS

High immune scores and stromal scores are significantly associated with better prognosis in HCC patients

Gene expression profiles and clinical data of 373 HCC patients with their initial pathologic diagnosis made between 1995 and 2013 were downloaded from the TCGA database. Twenty-nine patients with an overall survival (OS) less than 30 d were

excluded. Among the remaining patients, 109 (31.7%) were female, and 235 (68.3%) were male. Based on the ESTIMATE method, immune scores ranged from -1209.16 to 2934.36, and stromal scores were distributed between -1741.56 and 1195.07. Of note, 258 patients with scores higher than the 25th percentile were defined as a “high score group”, while 86 patients with scores lower than the 25th percentile were defined as a “low score group”. The detailed clinical information of HCC patients is shown in [Supplementary Table 1](#). Kaplan-Meier survival curves showed that the mean recurrence-free survival (RFS) and OS in the high-immune score group were better than those in the low-immune score group (RFS: 1032 d *vs* 478 d, $P = 0.0022$; OS: 2116 d *vs* 848 d, $P = 0.0272$; [Figure 1A and B](#)). Patients with high-stromal scores also had consistently better survival benefit in comparison to patients with low-stromal scores (RFS: 990 d *vs* 384 d, $P = 0.0007$; OS: 2116 d *vs* 1005 d, $P = 0.0213$; [Figure 1C and D](#)). Furthermore, detailed information about the infiltration levels of B cells, CD4⁺ T cells, CD8⁺ T cells, neutrophils, macrophages, and dendritic cells in the high/low immune score groups is shown in [Figure 1E-J](#) ($P < 0.0001$).

Identification of prognosis-related DEGs in HCC

To explore the survival differences between the high and low score groups, we compared Illumina HiSeq 2000 RNA-seq data of all 373 HCC patients obtained in the TCGA database. For the high and low groups according to immune scores, 1290 genes were downregulated and 48 were upregulated in the low score group (fold change > 2 ; $P < 0.05$). Similarly, for comparison based on stromal scores, 1649 genes were downregulated and 75 were upregulated in the low score group (fold change > 2 ; $P < 0.05$). Furthermore, 889 genes were downregulated in both the low immune score group and low stromal score group, while 10 genes were commonly upregulated in the low immune/stromal score group ([Figure 2A and B](#)). To investigate the potential roles of individual DEGs in OS, we performed univariate Cox proportional hazards regression analysis using the TCGA database data. Among the 899 DEGs in the low immune/stromal score group, 147 were associated with a significantly poorer prognosis ($P < 0.05$, [Supplementary Table 2](#)). Therefore, we focused on these DEGs for subsequent analyses.

Process and pathway enrichment analysis of prognosis-related DEGs

To summarize the potential functions of 147 DEGs, functional enrichment analyses were performed. GO enrichment analysis indicated the following top GO terms: T cell activation, lymphocyte differentiation, and T cell selection in biological process ([Figure 2C](#)); external side of plasma membrane, extracellular matrix, and T cell receptor complex in cell component ([Figure 2D](#)); and extracellular matrix structural constituent, carbohydrate binding, and structural molecule activity conferring elasticity in molecular function ([Figure 2E](#)). Pathways identified by KEGG analysis were related to the immune response ([Figure 2F](#)). Moreover, we performed a network of enriched terms to capture the relationships between the terms by the metacore data portal and found that terms related to the adaptive immune process were in a central position in the network ([Figure 2G](#)).

Protein-protein interaction network and module analysis among prognosis-related DEGs

To better explore the interplay among the DEGs of prognostic significance, we generated PPI networks using the STRING data portal. The network consisted of six modules, which included 97 nodes and 420 interactions ([Figure 3A](#)). The top module (MCODE score 15.78; 19 nodes and 142 edges) was selected for further analysis ([Figure 3B](#)). Significant GO enrichment analysis showed that the module closely correlated with T cell activation, leukocyte cell-cell adhesion, and regulation of leukocyte cell-cell adhesion ([Figure 3C](#)). With respect to the KEGG pathway enrichment analysis, DEGs in the module were mainly located in the T cell receptor signaling pathway, cell adhesion molecules (CAMs), and primary immunodeficiency ([Figure 3D](#)).

Validation in the HCCDB database

To determine if the genes identified from TCGA-HCC cohort are also of prognostic significance to other HCC-related cohorts, we downloaded the gene expression profile and clinical data of four HCC cohorts from the HCCDB database. A total of 52 genes were validated to be associated with a poor prognosis. Of these genes, 14 were verified by two HCCDB cohorts, and 38 were verified by one HCCDB cohort ([Figure 4A and B](#), [Table 1](#)). In addition, 38 genes generated particular interest as they have not been reported to be associated with poor outcomes in HCC patients previously.

Construction of prognostic classifier for HCC patients

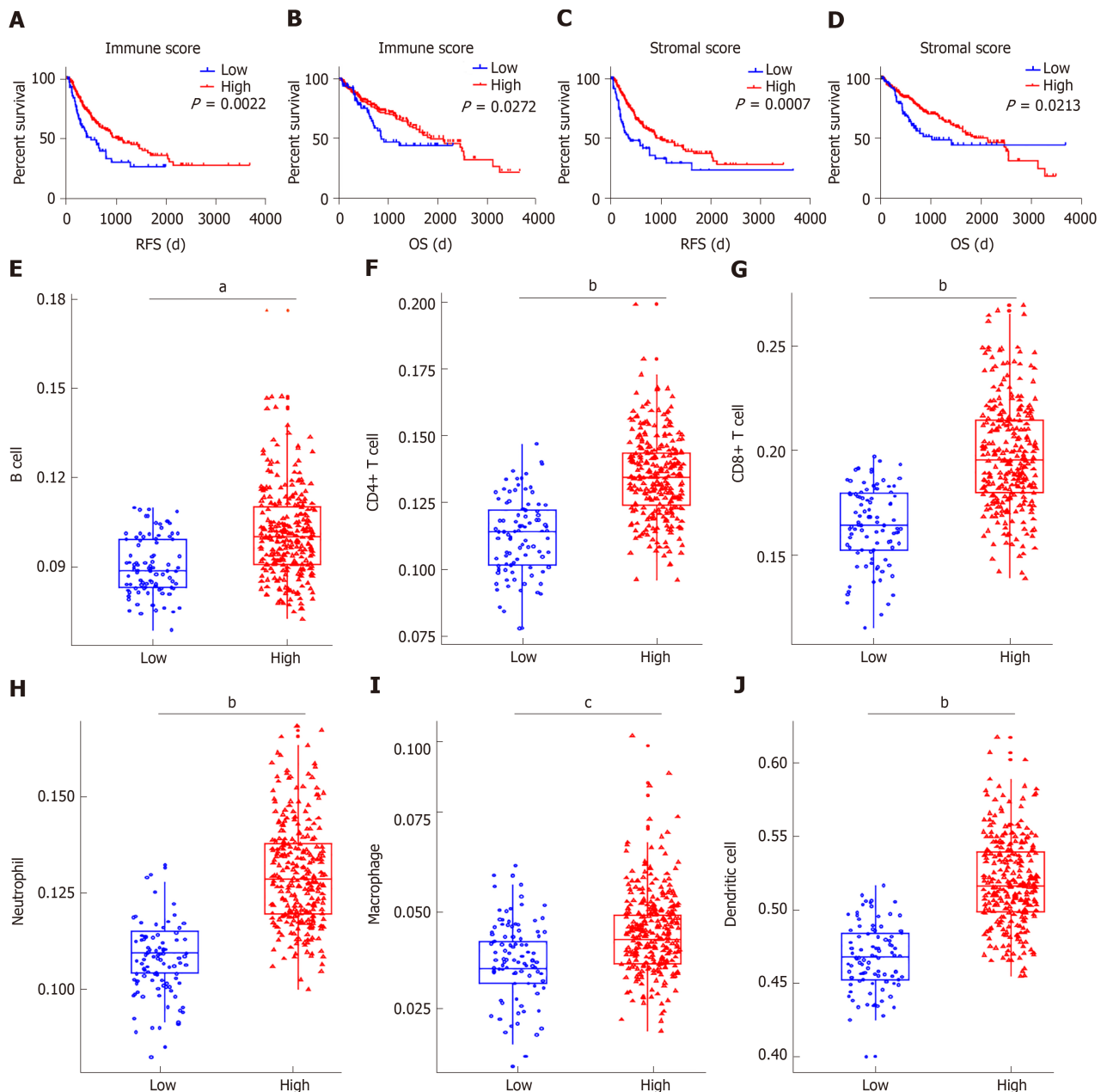


Figure 1 High immune scores and stromal scores are significantly associated with better prognosis in patients with hepatocellular carcinoma. A: Recurrence-free survival (RFS) between two groups based on immune scores; B: Overall survival (OS) between two groups based on immune scores; C: RFS between two groups based on stromal scores; D: OS between two groups based on stromal scores; E-J: Level of tumor-infiltrating immune cells in the two groups, including B cell, CD4+ T cell, CD8+ T cell, neutrophil, macrophage, and dendritic cell. There were 258 cases with high scores and 86 cases with low scores. ^a $P = 6.9 \times 10^{-15}$, ^b $P < 2.2 \times 10^{-16}$, ^c $P = 8.8 \times 10^{-10}$. RFS: Recurrence-free survival; OS: Overall survival.

We utilized LASSO regression to screen ten key genes from the set of 52 genes that are most relevant to OS (Figure 4C, Table 2). The Kaplan-Meier survival curves of ten key genes are shown in Figure 5 and they presented great prediction performance of OS using the TCGA-HCC cohort. The risk score of patients was calculated according to the expression levels of the ten key genes and LASSO coefficients. A total of 251 patients with prognostic scores less than the cutoff value (-1.102) were categorized into the "low-risk group", while the remaining 93 patients were categorized into the "high-risk group" (Figure 4D and E). An extremely significant difference in OS was detected between the two groups ($P < 0.0001$, Figure 4F). Figure 4G shows that *STSL2* and *TMC5* were highly expressed in the high-risk group, whereas the remaining eight genes (*DOK5*, *RASGRP2*, *NLRC3*, *KLRB1*, *CD5L*, *CFHR3*, *ADH1C*, and *UGT2B15*) were highly expressed in the low-risk group. To determine if the gene signature is an independent risk factor in patients with HCC, univariate and multivariate Cox regression analyses were conducted. After the multivariable adjustment, the ten-gene-based signature remained a significantly independent factor ($P = 0.001$, Table 3). In

Table 1 Genes with significant prognostic value in hepatocellular carcinoma identified in both The Cancer Genome Atlas and Integrative Molecular Database of Hepatocellular Carcinoma

Times of gene verification by HCC cohorts from HCCDB	Down-regulated gene in low score group	Up-regulated gene in low score group
2	MS4A1 , KLRB1 , ITK , GZMH , ADH1C , UGT2B15 , GPR171 , CD40LG , CD5 , FBLN2 , CCL21 , ATP2A3 , IL16 , ELN	
1	SELL , CD5L , KLRK1 , CXCR6 , TRAF3IP3 , CD79A , FLT3 , GZMA , SPN , PRKCQ , SIDT1 , RERGL , INMT , C11orf21 , ZAP70 , FLI1 , DOK5 , ITM2A , PHLDA3 , APLN , CFHR3 , NLRC3 , GIMAP1 , FBLN5 , DARC , SLFN12L , RASGRP2 , SELP , ACAP1 , C7 , HTR2B , TNXB , SAMD3 , PDZD4	CTSL2 , MFAP2 , TMC5 , BACE2

Genes in bold have not been previously reported for their prognostic value in hepatocellular carcinoma patients. HCC: Hepatocellular carcinoma; HCCDB: Integrative molecular database of hepatocellular carcinoma.

addition, the prognostic gene classifier showed a good performance in survival prediction, which was better than TNM staging (AUC for 3-year survival: 0.75 *vs* 0.684, **Figure 4H**). More importantly, the ten-gene-based signature combined with clinical features, such as Eastern Cooperative Oncology Group performance status and TNM stage, achieved a greater AUC, which was significantly better than the classifier alone. These results suggested that combining the ten-gene-based classifier with clinical features may further improve the ability to predict OS.

DISCUSSION

In this study, low infiltration levels of immune and stromal cells in HCC microenvironments were associated with poor outcomes, and we confirmed the TME-related genes responsible for OS in the TCGA-HCC cohort. By investigating the gene expression profiles in 373 cases with low *vs* high immune/stromal scores, 147 prognosis-related DEGs were identified to be involved in immune response and extracellular matrix. More importantly, 52 genes were validated in additional four HCC cohorts from HCCDB, an integrative HCC database containing Gene Expression Omnibus data and International Cancer Genome Consortium data. Ten key genes were screened by the LASSO algorithm and used to construct a prognostic classifier, which showed good performance for predicting OS, indicating a close correlation between these key genes and the prognosis of HCC.

Based on the survival difference between the high and low score groups, 899 DEGs were obtained from the comparison. Among these DEGs, 147 were identified to be related to poor outcomes, many of which are involved in TMEs (**Figure 2**). These findings are consistent with previous studies showing that TMEs have a critical influence on HCC^[4,23,24].

Second, we also generated a PPI network to investigate the correlation among the 147 genes. Ubiquitin carboxyl-terminal hydrolase L1 (UCHL1), which was at the center of the network, has been reported to be a tumor suppressor and play a vital role in the tumorigenesis of HCC^[25]. Densely connected regions in the network determined by MCODE module analysis are also involved in immune responses and extracellular matrices, which is consistent with the overall enrichment results of all 147 genes. The nodes with a highly connectivity degree in the module containing CXCR6, CCR7, and CD69 have been demonstrated to promote the progression of HCC and be involved in dysfunctions of immune cells^[26-28].

By cross validation with four independent HCC cohorts from the HCCDB database, 52 TME-related genes were identified, showing a significant correlation between gene expression and OS. Of the 52 genes confirmed, 12 (*e.g.*, **CD5**, **CCL21**, **CXCR6**, **GZMA**, and **SELP**) have been reported to be involved in hepatocarcinogenesis or significant in predicting prognosis, indicating that our bioinformatical analysis using TCGA and HCCDB cohorts has reliable prognostic values. The remaining 38 genes have not been previously studied for their effects on hepatocarcinogenesis, suggesting that they may serve as novel therapeutic targets or potential biomarkers for HCC.

Finally, we used LASSO regression analysis to identify ten key genes and subsequently constructed a gene signature showing great capacity for predicting OS. According to our study, **CTSL2** and **TMC5** were regarded as tumor promoters, while **DOK5**, **CFHR3**, **ADH1C**, **UGT2B15**, **CD5L**, **RASGRP2**, **KLRB1**, and **NLRC3** were

Table 2 Top 10 genes predicting overall survival screened by lasso regression in hepatocellular carcinoma cohort from The Cancer Genome Atlas

Gene	Univariate Cox regression analysis			LASSO coefficient
	HR	95%CI	P value	
<i>NLRC3</i>	0.72	0.60-0.87	0.0008	-0.0780
<i>CFHR3</i>	0.89	0.84-0.94	0.0001	-0.0375
<i>KLRB1</i>	0.84	0.76-0.93	0.0008	-0.0276
<i>CTSL2</i>	1.13	1.05-1.21	0.0005	0.0173
<i>ADH1C</i>	0.91	0.87-0.96	0.0002	-0.0149
<i>CD5L</i>	0.90	0.85-0.95	0.0004	-0.0131
<i>TMC5</i>	1.06	1.01-1.12	0.0255	0.0106
<i>DOK5</i>	0.84	0.75-0.95	0.0041	-0.0082
<i>UGT2B15</i>	0.91	0.86-0.96	0.0007	-0.0072
<i>RASGRP2</i>	0.82	0.72-0.93	0.0016	-0.0062

HR: Hazard ratio; CI: Confidential interval.

regarded as tumor suppressors. *NLRC3*, a member of the nucleotide-binding domain and leucine-rich repeat (NLR) family protein, plays an important role in immunity and inflammation^[29,30]. Ma *et al*^[31] reported that high expression levels of *NLRC3* correlate with a favorable clinical prognosis in a Chinese HCC population and that downregulation of *NLRC3* expression inhibits cell apoptosis and contributes to cell proliferation *in vitro*. Maehara *et al*^[32] investigated *CD5L*, which is the apoptosis inhibitor of macrophages, and they found that *CD5L* prevents hepatocellular carcinoma through complement activation. Two other studies have also shown that *CD5L* favors overall HCC survival, which agreed with our study^[33,34]. Therefore, the prognostic value of the additional eight key genes reported in this study may provide a valuable direction for future research.

The interactions of HCC and the TME significantly affect tumor evolution, hence influencing tumor escape, tumor recurrence, drug resistance, and patient clinical outcomes^[4,35-37]. Remarkable progress has been made in the research of the interplay between HCC and TME, and most of these experiments have been performed in cell lines, animal models, or small cohorts based on patient samples. However, the complexity of HCC and TME requires additional comprehensive analysis. Fortunately, the development of tumor databases, including TCGA and HCCDB, has provided a solid foundation for high-throughput screening of large-scale HCC cohorts. Our results provide novel data revealing the complex interplay of tumor and TME in HCC.

There are several limitations in our study. First, due to the current study being implemented based on bioinformatics analysis, biological experiments are urgently needed for validation. Second, as the data used were from public databases, their quality was not effectively assessed. Third, the clinical characteristic of patients were not taken into account in survival analysis since identification of the prognosis-related genes from multiple datasets was the primary focus.

In conclusion, this study extracted a series of genes associated with TME and prognosis from the TCGA database using the ESTIMATE method. These genes were validated in four independent HCC cohorts. After screening by LASSO regression, ten key genes were used to construct a gene signature, showing good performance in predicting OS. These findings contribute to outlining the prognosis and molecular targeted therapy of HCC. Further investigations of these key genes may bring a novel insight into the potential association of TME with HCC prognosis in a more comprehensive pattern.

Table 3 Univariate and multivariate Cox regression analyses of prognostic factors and overall survival of patients with hepatocellular carcinoma from The Cancer Genome Atlas database

Variable	Univariate analysis			Multivariate analysis		
	HR	95%CI	P value	HR	95%CI	P value
Risk score	11.37	5.49-23.56	< 0.001	8.99	2.53-32.01	0.001
TNM stage	1.79	1.45-2.22	< 0.001	1.24	0.89-1.75	0.209
Age	1.01	0.99-1.02	0.254			
Gender	0.79	0.55-1.13	0.192			
Race	1.13	0.94-1.37	0.196			
Child-Pugh score	1.69	0.93-3.07	0.084			
ECOG performance status	2.41	1.91-3.04	< 0.001	1.74	1.16-2.63	0.008
AFP	1	1-1	0.443			
Fibrosis ishak score	0.91	0.78-1.07	0.253			
Histologic grade	1.1	0.86-1.4	0.445			
Vascular invasion	1.47	1.06-2.06	0.022	1.16	0.75-1.79	0.511
Hepatitis virus infection	0.45	0.3-0.68	< 0.001	0.81	0.45-1.46	0.477
Alcohol consumption	1.1	0.75-1.62	0.616			

HR: Hazard ratio; CI: Confidential interval; ECOG: Eastern Cooperative Oncology Group.

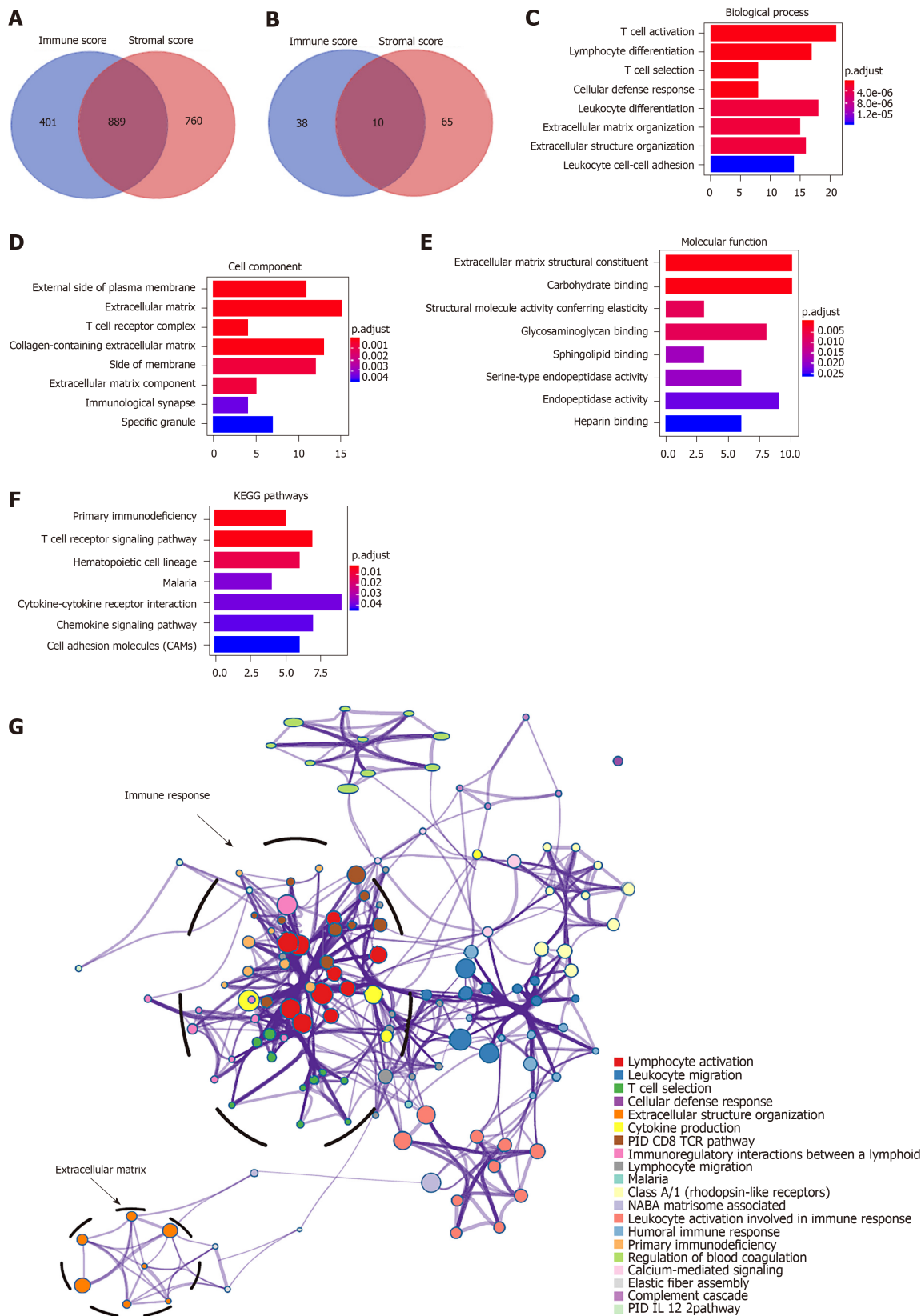
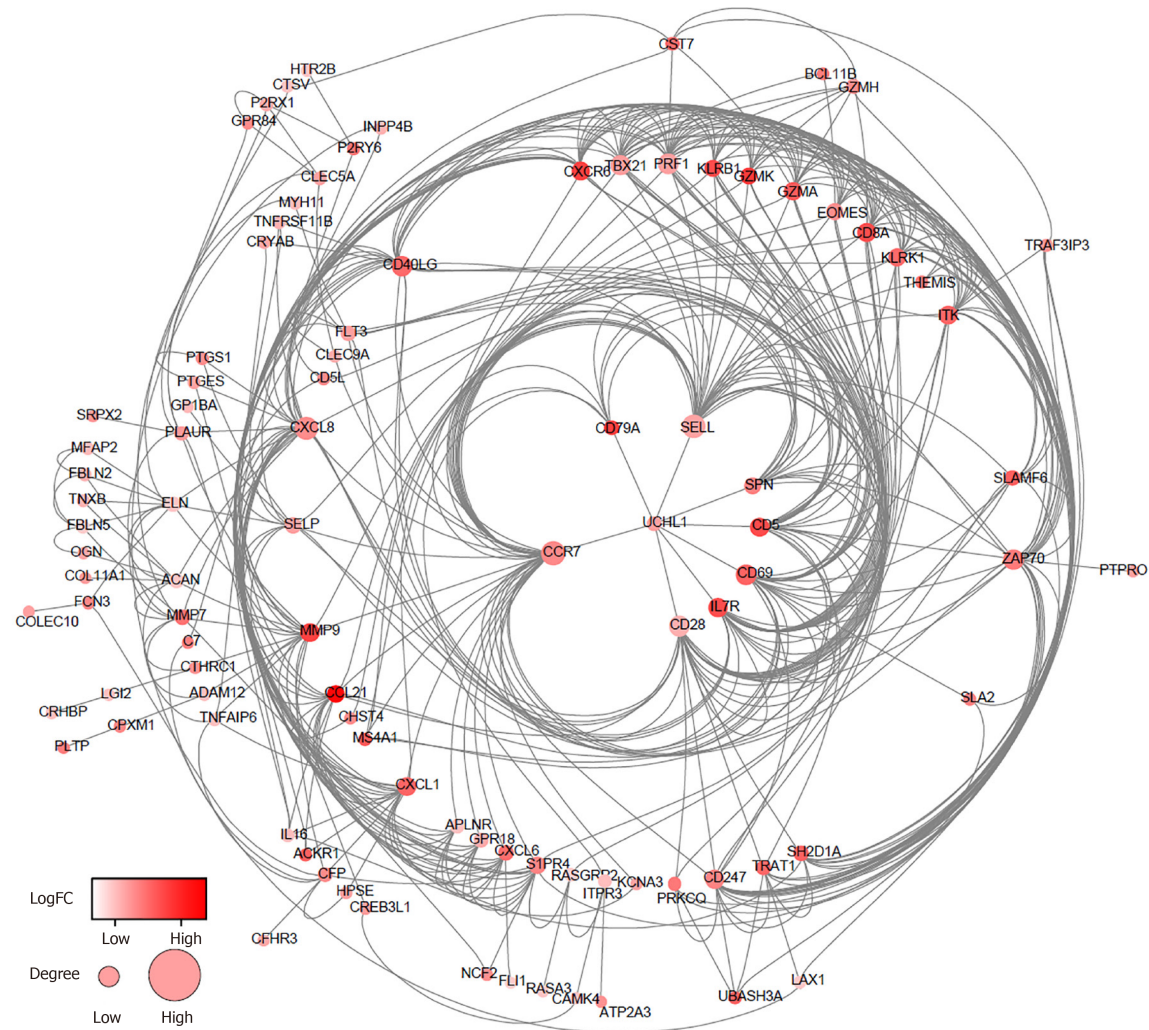
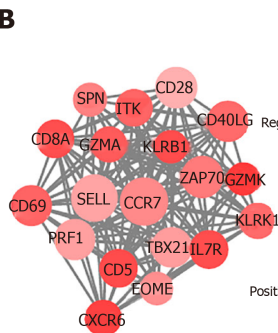


Figure 2 Pathway and process enrichment analysis of prognosis-related differentially expressed genes in hepatocellular carcinoma. A and B: Venn diagrams showing the number of simultaneously downregulated (A) or upregulated (B) differentially expressed genes (DEGs) in immune or stromal score groups; C-F: Gene ontology terms and Kyoto Encyclopedia of Genes and Genomes (KEGG) pathway analysis across 147 DEGs with regard to (C) biological process, (D) cellular component, (E) molecular function, and (F) KEGG pathway. G: Network of enriched terms. Nodes that share the same terms are typically close to each other. KEGG: Kyoto Encyclopedia of Genes and Genomes.

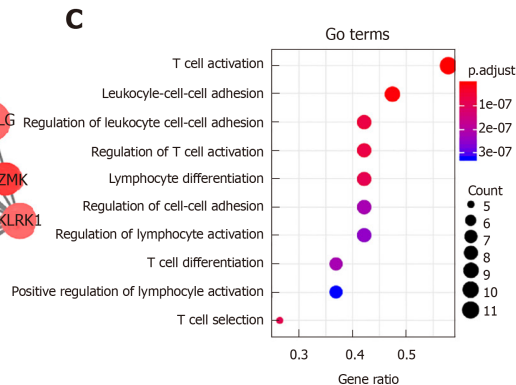
A



B



C



D

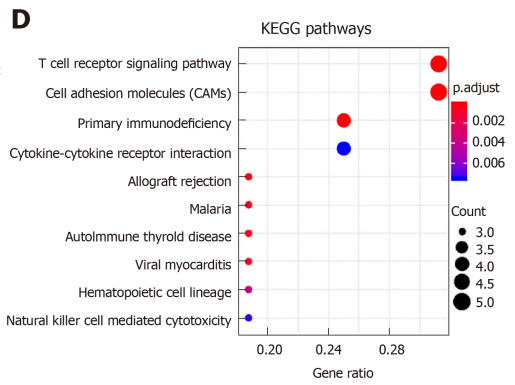


Figure 3 Protein-protein interaction network and module analysis of prognosis-related differentially expressed genes. A: Protein-protein interaction (PPI) network of all 147 differentially expressed genes; B: PPI network of the module. The color of nodes in the PPI network reflects the log (FC) value of the Z score of gene expression, and the size of nodes means the number of interacting proteins with the designated protein; C and D: Gene ontology terms and KEGG pathway analysis for the genes in the module. GO: Gene ontology; KEGG: Kyoto Encyclopedia of Genes and Genomes.

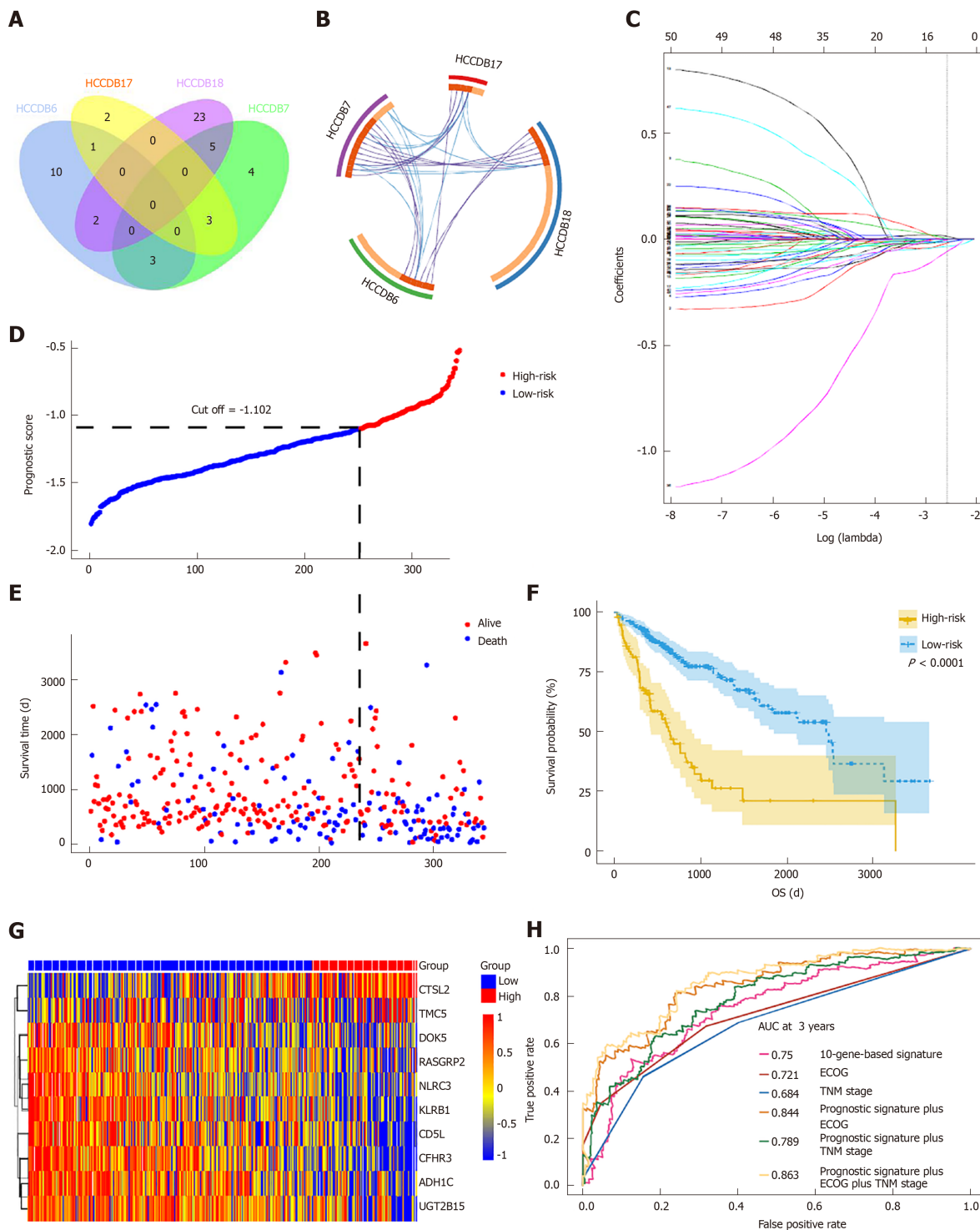
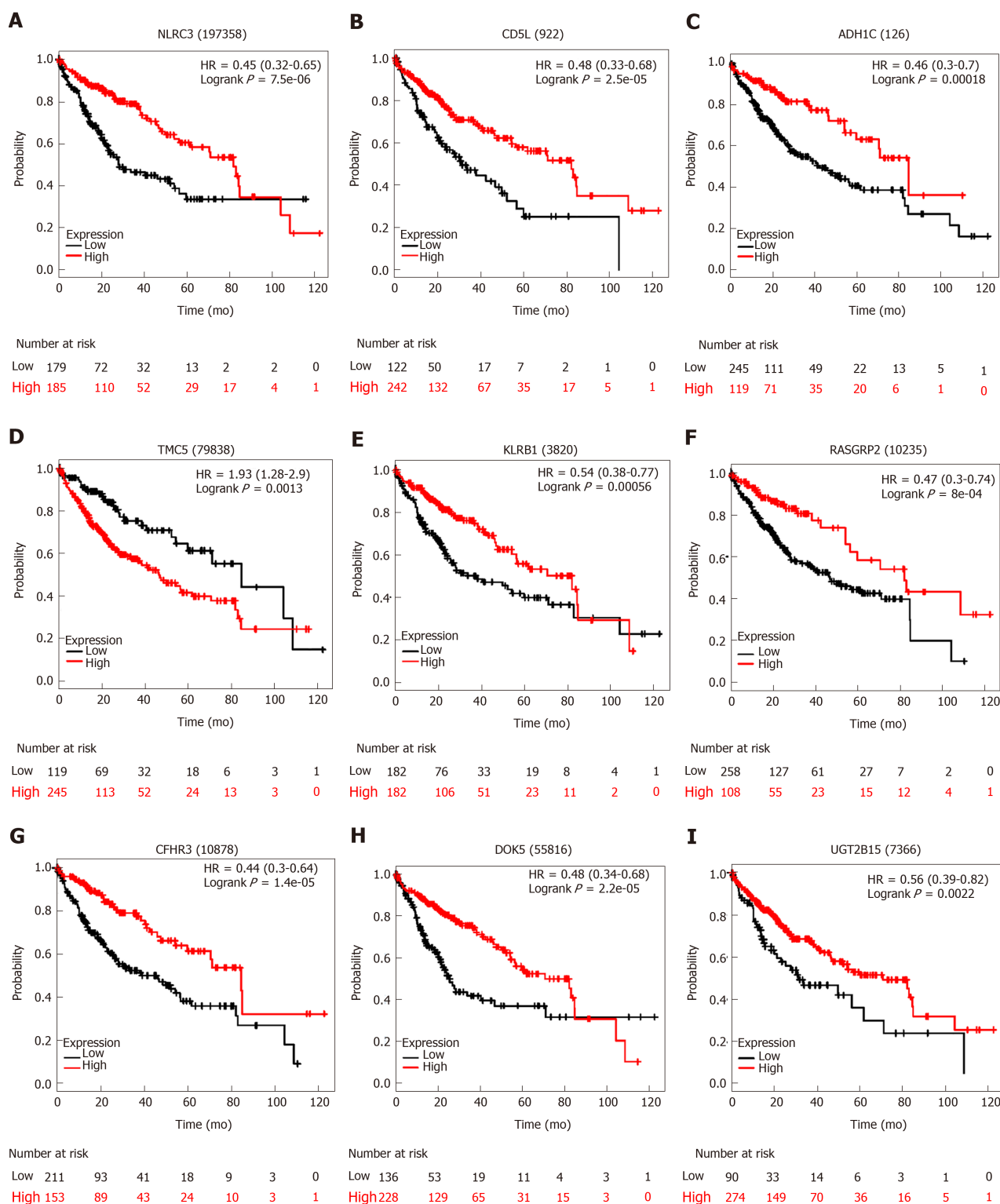


Figure 4 Prognosis-related differentially expressed genes validated in four additional cohorts and construction of the prognostic gene signature. A: Venn diagram showing the results of genes validated in four cohorts; B: Circos plot showing overlapping genes between the four cohorts. Purple curves link identical genes while blue curves link genes that belong to the same enriched ontology term; C: LASSO coefficient profiles of 52 genes validated in four cohorts; D: Distribution of risk scores; E: Patients' survival time and status. The black dotted line indicates the optimum cutoff dividing patients into low- and high-risk groups; (F) Kaplan-Meier curves for low- and high-risk groups; G: Heat map of ten key genes in the genes signature; H: Time-dependent receiver operating characteristic curves for comparing prediction accuracy among the ten-gene-based signature and clinicopathological features.



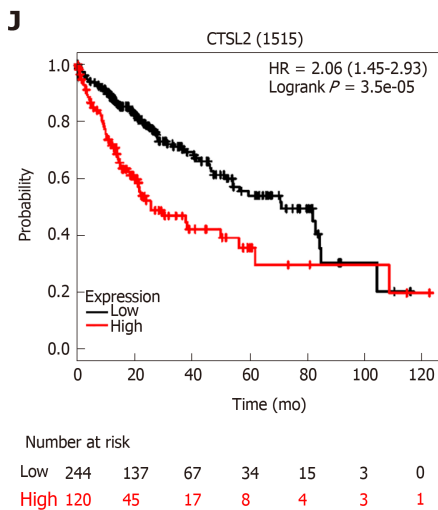


Figure 5 Correlation of expression of the ten genes with overall survival in The Cancer Genome Atlas. Kaplan-Meier survival curves were generated by using the website "Kaplan Meier plotter" (<http://kmplot.com/analysis>). The the best performing threshold was selected as a cutoff.

ARTICLE HIGHLIGHTS

Research background

Tumor microenvironments (TMEs) play an important role in cancer development, including hepatocellular carcinoma (HCC), hence affecting clinical outcomes. Stromal and immune cells are two major components of nontumor cells in TMEs and are considered to be valuable for the prognostic evaluation of tumors. Nonetheless, the infiltration level of stromal/immune cells and specific roles of TME-related genes in HCC have not yet been clarified.

Research motivation

More biomarkers are required for the diagnosis and treatment of HCC.

Research objectives

The present study investigated potential key genes associated with tumor microenvironments and the prognosis of HCC.

Research methods

The ESTIMATE method was used to predict the infiltration levels of stromal and immune cells in HCC. Differentially expressed genes (DEGs) between patients with high and low infiltration levels were screened using the TCGA database and linked to overall survival of HCC. DEGs were verified by four other independent HCC cohorts and further selected by LASSO Cox regression analysis.

Research results

HCC patients with high immune/stromal infiltration levels had better survival benefits than patients with low infiltration levels. A total of 147 DEGs were identified to be associated with overall survival. Moreover, 52 survival-related DEGs were validated, and ten key genes were selected by LASSO algorithm, which were further used to construct a prognostic classifier, showing a good performance in predicting overall survival.

Research conclusions

Our study screened a series of TME-related genes and provided a novel insight into the potential association of TME with HCC prognosis and molecular targeted therapy of HCC in the future.

Research perspectives

HCC and TMEs are an integral whole. More in-depth research should be conducted to reveal the important role of components of TMEs in HCC to develop novel anti-cancer treatments *via* targeting TME-related cells and the extracellular matrix.

ACKNOWLEDGEMENTS

We thank Yi-Dong Pan (Guy's, King's & St Thomas's (GKT) School of Medical Education, King's College London, London, United Kingdom) and AJE (www.aje.com) for their linguistic assistance during the preparation of this manuscript.

REFERENCES

- 1 Siegel RL, Miller KD, Jemal A. Cancer statistics, 2018. *CA Cancer J Clin* 2018; **68**: 7-30 [PMID: 29313949 DOI: 10.3322/caac.21442]
- 2 Qu C, He, Lu X, Dong L, Zhu Y, Zhao Q, Jiang X, Chang P, Jiang X, Wang L, Zhang Y, Bi L, He J, Peng Y, Su J, Zhang H, Huang H, Li Y, Zhou S, Qu Y, Zhao Y, Zhang Z. Salt-inducible Kinase (SIK1) regulates HCC progression and WNT/ β -catenin activation. *J Hepatol* 2016; **64**: 1076-1089 [PMID: 26778753 DOI: 10.1016/j.jhep.2016.01.005]
- 3 Levrero M, Zucman-Rossi J. Mechanisms of HBV-induced hepatocellular carcinoma. *J Hepatol* 2016; **64**: S84-S101 [PMID: 27084040 DOI: 10.1016/j.jhep.2016.02.021]
- 4 Giannelli G, Rani B, Dituri F, Cao Y, Palasciano G. Moving towards personalised therapy in patients with hepatocellular carcinoma: the role of the microenvironment. *Gut* 2014; **63**: 1668-1676 [PMID: 25053718 DOI: 10.1136/gutjnl-2014-307323]
- 5 Muppa P, Parrilha Terra SBS, Sharma A, Mansfield AS, Aubry MC, Bhinge K, Asiedu MK, de Andrade M, Janaki N, Murphy SJ, Nasir A, Van Keulen V, Vasmatazis G, Wigle DA, Yang P, Yi ES, Peikert T, Kosari F. Immune Cell Infiltration May Be a Key Determinant of Long-Term Survival in Small Cell Lung Cancer. *J Thorac Oncol* 2019; **14**: 1286-1295 [PMID: 31078775 DOI: 10.1016/j.jtho.2019.03.028]
- 6 Wu T, Dai Y. Tumor microenvironment and therapeutic response. *Cancer Lett* 2017; **387**: 61-68 [PMID: 26845449 DOI: 10.1016/j.canlet.2016.01.043]
- 7 Fridman WH, Pagès F, Sautès-Fridman C, Galon J. The immune contexture in human tumours: impact on clinical outcome. *Nat Rev Cancer* 2012; **12**: 298-306 [PMID: 22419253 DOI: 10.1038/nrc3245]
- 8 Mlecnik B, Tosolini M, Kirilovsky A, Berger A, Bindea G, Meatchi T, Bruneval P, Trajanoski Z, Fridman WH, Pagès F, Galon J. Histopathologic-based prognostic factors of colorectal cancers are associated with the state of the local immune reaction. *J Clin Oncol* 2011; **29**: 610-618 [PMID: 21245428 DOI: 10.1200/JCO.2010.30.5425]
- 9 Villanueva A, Hoshida Y, Battiston C, Tovar V, Sia D, Alsinet C, Cornella H, Liberzon A, Kobayashi M, Kumada H, Thung SN, Bruix J, Newell P, April C, Fan JB, Roayaie S, Mazzaferro V, Schwartz ME, Llovet JM. Combining clinical, pathology, and gene expression data to predict recurrence of hepatocellular carcinoma. *Gastroenterology* 2011; **140**: 1501-12.e2 [PMID: 21320499 DOI: 10.1053/j.gastro.2011.02.006]
- 10 Verhaak RG, Hoadley KA, Purdom E, Wang V, Qi Y, Wilkerson MD, Miller CR, Ding L, Golub T, Mesirov JP, Alexe G, Lawrence M, O'Kelly M, Tamayo P, Weir BA, Gabriel S, Winckler W, Gupta S, Jakkula L, Feiler HS, Hodgson JG, James CD, Sarkaria JN, Brennan C, Kahn A, Spellman PT, Wilson RK, Speed TP, Gray JW, Meyerson M, Getz G, Perou CM, Hayes DN; Cancer Genome Atlas Research Network. Integrated genomic analysis identifies clinically relevant subtypes of glioblastoma characterized by abnormalities in PDGFRA, IDH1, EGFR, and NF1. *Cancer Cell* 2010; **17**: 98-110 [PMID: 20129251 DOI: 10.1016/j.ccr.2009.12.020]
- 11 Shedden K, Taylor JM, Enkemann SA, Tsao MS, Yeatman TJ, Gerald WL, Eschrich S, Jurisica I, Giordano TJ, Misk DE, Chang AC, Zhu CQ, Strumpf D, Hanash S, Shepherd FA, Ding K, Seymour L, Naoki K, Pennell N, Weir B, Verhaak R, Ladd-Acosta C, Golub T, Gruhl M, Sharma A, Szoke J, Zakowski M, Rusch V, Kris M, Viale A, Motoi N, Travis W, Conley B, Seshan VE, Meyerson M, Kuick R, Dobbin KK, Lively T, Jacobson JW, Beer DG; Director's Challenge Consortium for the Molecular Classification of Lung Adenocarcinoma. Gene expression-based survival prediction in lung adenocarcinoma: a multi-site, blinded validation study. *Nat Med* 2008; **14**: 822-827 [PMID: 18641660 DOI: 10.1038/nm.1790]
- 12 Yoshihara K, Shahmoradgol M, Martínez E, Vegesna R, Kim H, Torres-Garcia W, Treviño V, Shen H, Laird PW, Levine DA, Carter SL, Getz G, Stemke-Hale K, Mills GB, Verhaak RG. Inferring tumour purity and stromal and immune cell admixture from expression data. *Nat Commun* 2013; **4**: 2612 [PMID: 24113773 DOI: 10.1038/ncomms3612]
- 13 Alonso MH, Aussó S, Lopez-Doriga A, Cordero D, Guinó E, Solé X, Barenys M, de Oca J, Capella G, Salazar R, Sanz-Pamplona R, Moreno V. Comprehensive analysis of copy number aberrations in microsatellite stable colon cancer in view of stromal component. *Br J Cancer* 2017; **117**: 421-431 [PMID: 28683472 DOI: 10.1038/bjc.2017.208]
- 14 Shah N, Wang P, Wongvipat J, Karthaus WR, Abida W, Armenia J, Rockowitz S, Drier Y, Bernstein BE, Long HW, Freedman ML, Arora VK, Zheng D, Sawyers CL. Regulation of the glucocorticoid receptor via a BET-dependent enhancer drives antiandrogen resistance in prostate cancer. *Elife* 2017; **6** [PMID: 28891793 DOI: 10.7554/eLife.27861]
- 15 Li T, Fan J, Wang B, Traugh N, Chen Q, Liu JS, Li B, Liu XS. TIMER: A Web Server for Comprehensive Analysis of Tumor-Infiltrating Immune Cells. *Cancer Res* 2017; **77**: e108-e110 [PMID: 29092952 DOI: 10.1158/0008-5472.CAN-17-0307]
- 16 Li B, Severson E, Pignon JC, Zhao H, Li T, Novak J, Jiang P, Shen H, Aster JC, Rodig S, Signoretti S, Liu JS, Liu XS. Comprehensive analyses of tumor immunity: implications for cancer immunotherapy. *Genome Biol* 2016; **17**: 174 [PMID: 27549193 DOI: 10.1186/s13059-016-1028-7]
- 17 Lian Q, Wang S, Zhang G, Wang D, Luo G, Tang J, Chen L, Gu J. HCCDB: A Database of Hepatocellular Carcinoma Expression Atlas. *Genomics Proteomics Bioinformatics* 2018; **16**: 269-275 [PMID: 30266410 DOI: 10.1016/j.gpb.2018.07.003]
- 18 Ritchie ME, Phipson B, Wu D, Hu Y, Law CW, Shi W, Smyth GK. limma powers differential expression analyses for RNA-sequencing and microarray studies. *Nucleic Acids Res* 2015; **43**: e47 [PMID: 25605792 DOI: 10.1093/nar/gkv007]
- 19 Zhou Y, Zhou B, Pache L, Chang M, Khodabakhshi AH, Tanaseichuk O, Benner C, Chanda SK. Metascape provides a biologist-oriented resource for the analysis of systems-level datasets. *Nat Commun* 2019; **10**: 1523 [PMID: 30944313 DOI: 10.1038/s41467-019-09234-6]
- 20 Yu G, Wang LG, Han Y, He QY. clusterProfiler: an R package for comparing biological themes among gene clusters. *OMICS* 2012; **16**: 284-287 [PMID: 22455463 DOI: 10.1089/omi.2011.0118]
- 21 Szklarczyk D, Morris JH, Cook H, Kuhn M, Wyder S, Simonovic M, Santos A, Doncheva NT, Roth A, Bork P, Jensen LJ, von Mering C. The STRING database in 2017: quality-controlled protein-protein association networks, made broadly accessible. *Nucleic Acids Res* 2017; **45**: D362-D368 [PMID: 27924014 DOI: 10.1093/nar/gkw937]
- 22 Shannon P, Markiel A, Ozier O, Baliga NS, Wang JT, Ramage D, Amin N, Schwikowski B, Ideker T. Cytoscape: a software environment for integrated models of biomolecular interaction networks. *Genome Res* 2003; **13**: 2498-2504 [PMID: 14597658 DOI: 10.1101/gr.1239303]

- 23 **Giannelli G**, Fransvea E, Bergamini C, Marinosci F, Antonaci S. Laminin-5 chains are expressed differentially in metastatic and nonmetastatic hepatocellular carcinoma. *Clin Cancer Res* 2003; **9**: 3684-3691 [PMID: [14506159](#)]
- 24 **Govaere O**, Komuta M, Berkers J, Spee B, Janssen C, de Luca F, Katoonzadeh A, Wouters J, van Kempen LC, Durnez A, Verslype C, De Kock J, Rogiers V, van Grunsven LA, Topal B, Pirenne J, Vankelecom H, Nevens F, van den Oord J, Pinzani M, Roskams T. Keratin 19: a key role player in the invasion of human hepatocellular carcinomas. *Gut* 2014; **63**: 674-685 [PMID: [23958557](#) DOI: [10.1136/gutjnl-2012-304351](#)]
- 25 **Yu J**, Tao Q, Cheung KF, Jin H, Poon FF, Wang X, Li H, Cheng YY, Röcken C, Ebert MP, Chan AT, Sung JJ. Epigenetic identification of ubiquitin carboxyl-terminal hydrolase L1 as a functional tumor suppressor and biomarker for hepatocellular carcinoma and other digestive tumors. *Hepatology* 2008; **48**: 508-518 [PMID: [18666234](#) DOI: [10.1002/hep.22343](#)]
- 26 **Mossanen JC**, Kohlhepp M, Wehr A, Krenkel O, Liepelt A, Roeth AA, Möckel D, Heymann F, Lammers T, Gassler N, Hermann J, Jankowski J, Neumann UP, Luedde T, Trautwein C, Tacke F. CXCR6 Inhibits Hepatocarcinogenesis by Promoting Natural Killer T- and CD4⁺ T-Cell-Dependent Control of Senescence. *Gastroenterology* 2019; **156**: 1877-1889.e4 [PMID: [30710528](#) DOI: [10.1053/j.gastro.2019.01.247](#)]
- 27 **Duan M**, Goswami S, Shi JY, Wu LJ, Wang XY, Ma JQ, Zhang Z, Shi Y, Ma LJ, Zhang S, Xi RB, Cao Y, Zhou J, Fan J, Zhang XM, Gao Q. Activated and Exhausted MAIT Cells Foster Disease Progression and Indicate Poor Outcome in Hepatocellular Carcinoma. *Clin Cancer Res* 2019; **25**: 3304-3316 [PMID: [30723143](#) DOI: [10.1158/1078-0432.CCR-18-3040](#)]
- 28 **Easom NJW**, Stegmann KA, Swadling L, Pallett LJ, Burton AR, Odera D, Schmidt N, Huang WC, Fusai G, Davidson B, Maini MK. IL-15 Overcomes Hepatocellular Carcinoma-Induced NK Cell Dysfunction. *Front Immunol* 2018; **9**: 1009 [PMID: [29867983](#) DOI: [10.3389/fimmu.2018.01009](#)]
- 29 **Gültekin Y**, Eren E, Özören N. Overexpressed NLRC3 acts as an anti-inflammatory cytosolic protein. *J Innate Immun* 2015; **7**: 25-36 [PMID: [25277106](#) DOI: [10.1159/000363602](#)]
- 30 **Lv Z**, Wang Y, Liu YJ, Mao YF, Dong WW, Ding ZN, Meng GX, Jiang L, Zhu XY. NLRP3 Inflammasome Activation Contributes to Mechanical Stretch-Induced Endothelial-Mesenchymal Transition and Pulmonary Fibrosis. *Crit Care Med* 2018; **46**: e49-e58 [PMID: [29088003](#) DOI: [10.1097/CCM.0000000000002799](#)]
- 31 **Ma YY**, Zhang GH, Li J, Wang SB, Hu ZM, Zhang CW, Li E. The correlation of NLRC3 expression with the progression and prognosis of hepatocellular carcinoma. *Hum Pathol* 2018; **82**: 273-281 [PMID: [30081150](#) DOI: [10.1016/j.humpath.2018.07.031](#)]
- 32 **Maehara N**, Arai S, Mori M, Iwamura Y, Kurokawa J, Kai T, Kusunoki S, Taniguchi K, Ikeda K, Ohara O, Yamamura KI, Miyazaki T. Circulating AIM prevents hepatocellular carcinoma through complement activation. *Cell Rep* 2014; **9**: 61-74 [PMID: [25284781](#) DOI: [10.1016/j.celrep.2014.08.058](#)]
- 33 **Zhang X**, Kang C, Li N, Liu X, Zhang J, Gao F, Dai L. Identification of special key genes for alcohol-related hepatocellular carcinoma through bioinformatic analysis. *PeerJ* 2019; **7**: e6375 [PMID: [30755830](#) DOI: [10.7717/peerj.6375](#)]
- 34 **Brunner SM**, Itzel T, Rubner C, Kesselring R, Griesshammer E, Evert M, Teufel A, Schlitt HJ, Fichtner-Feigl S. Tumor-infiltrating B cells producing antitumor active immunoglobulins in resected HCC prolong patient survival. *Oncotarget* 2017; **8**: 71002-71011 [PMID: [29050338](#) DOI: [10.18632/oncotarget.20238](#)]
- 35 **Tian XP**, Wang CY, Jin XH, Li M, Wang FW, Huang WJ, Yun JP, Xu RH, Cai QQ, Xie D. Acidic Microenvironment Up-Regulates Exosomal miR-21 and miR-10b in Early-Stage Hepatocellular Carcinoma to Promote Cancer Cell Proliferation and Metastasis. *Theranostics* 2019; **9**: 1965-1979 [PMID: [31037150](#) DOI: [10.7150/thno.30958](#)]
- 36 **Liu M**, Zhou J, Liu X, Feng Y, Yang W, Wu F, Cheung OK, Sun H, Zeng X, Tang W, Mok MTS, Wong J, Yeung PC, Lai PBS, Chen Z, Jin H, Chen J, Chan SL, Chan AWH, To KF, Sung JY, Chen M, Cheng AS. Targeting monocyte-intrinsic enhancer reprogramming improves immunotherapy efficacy in hepatocellular carcinoma. *Gut* 2019 [PMID: [31076403](#) DOI: [10.1136/gutjnl-2018-317257](#)]
- 37 **Kim W**, Khan SK, Liu Y, Xu R, Park O, He Y, Cha B, Gao B, Yang Y. Hepatic Hippo signaling inhibits protumoural microenvironment to suppress hepatocellular carcinoma. *Gut* 2018; **67**: 1692-1703 [PMID: [28866620](#) DOI: [10.1136/gutjnl-2017-314061](#)]



Published By Baishideng Publishing Group Inc
7041 Koll Center Parkway, Suite 160, Pleasanton, CA 94566, USA
Telephone: +1-925-3991568
E-mail: bpgoffice@wjgnet.com
Help Desk: <http://www.f6publishing.com/helpdesk>
<http://www.wjgnet.com>

