

Name of Journal: *World Journal of Gastrointestinal Pathophysiology*

Manuscript NO: 52081

Manuscript Type: MINIREVIEWS

Non-alcoholic fatty liver disease and Atherosclerosis at a crossroad: The overlap of a theory of change and bioinformatics

Abstract

Atherosclerosis (ATH) and non-alcoholic fatty liver disease (NAFLD) are medical conditions that straddle a communal epidemiology, underlying mechanism and a clinical syndrome that has protean manifestations, touching every organ in the body. These twin partners, ATH and NAFLD, are seemingly straightforward and relatively simple topics

Match Overview

1	Internet 48 words crawled on 03-Mar-2017 <a href="#">id.who.int</a>	2%
2	Crossref 46 words <a href="#">Arnold von Eckardstein, Simona Negrini. "Clinical and scientific debates on atherosclerosis: The truth lies somewhere i</a>	2%
3	Crossref 46 words <a href="#">Xiang Zhao, Yi-Zhao Luan, Xiaoyu Zuo, Ye-Da Chen et al. "Id entification of Risk Pathways and Functional Modules for (...</a>	2%
4	Internet 31 words crawled on 27-Nov-2019 <a href="#">publikationen.ub.uni-frankfurt.de</a>	1%
5	Internet 30 words crawled on 01-Jan-2020 <a href="#">upcommons.upc.edu</a>	1%
6	Internet 21 words crawled on 21-Jun-2019 <a href="#">www.nature.com</a>	1%
7	Crossref 16 words <a href="#">Suzanne E. Mahady, Jacob George. "Predicting the future b urden of NAFLD and NASH", Journal of Hepatology, 2018</a>	1%
8	Crossref 13 words <a href="#">Lisa B. VanWagner. "New insights into NAFLD and subclini cal coronary atherosclerosis", Journal of Hepatology, 2018</a>	<1%





国内版 国际版

Non-alcoholic fatty liver disease and Atherosclerosis at a cross



Chat with Bing

Sign in



ALL

IMAGES

VIDEOS

关闭取词

Add Bing Firefox extension >

16,500 Results

Any time ▾

## Non-alcoholic fatty liver disease: The diagnosis and ...

<https://www.ncbi.nlm.nih.gov/pmc/articles/PMC4411527>

Apr 28, 2015 · Non-alcoholic **fatty liver disease** (NAFLD) is now the most frequent **chronic liver disease** that occurs across all age groups and is recognized to occur in 14%-30% of the general population, representing a serious and growing clinical problem due to the growing prevalence of ...

Cited by: 156

Author: Abd El-Kader Sm, El-Den Ashmawy Em

Publish Year: 2015

## Cardiovascular Risk in Non-Alcoholic Fatty Liver Disease ...

<https://www.ncbi.nlm.nih.gov/pmc/articles/PMC6747357>

Aug 26, 2019 · Non-alcoholic **fatty liver disease** (NAFLD) is the most common chronic **liver disease** in developed countries. The natural course of the **disease** moves towards non-alcoholic steatohepatitis (NASH) and cirrhosis, implying that NAFLD will be the leading cause of **liver** transplantation by 2030 [ 1 ].

Author: Claudio Tana, Stefano Ballestri, Fabri...

Publish Year: 2019

## Non-alcoholic fatty liver disease as a cause and a ...

<https://www.sciencedirect.com/science/article/pii/S2213858714700324>

Metabolic syndrome is a cluster of metabolic abnormalities that identifies people at risk of diabetes and cardiovascular **disease**, whereas non-alcoholic **fatty liver disease** (NAFLD) is defined as a disorder with excess fat in the **liver** due to non-alcoholic causes.

Cited by: 547

Author: Hannele Yki-Järvinen, Hannele Yki-Järvin...

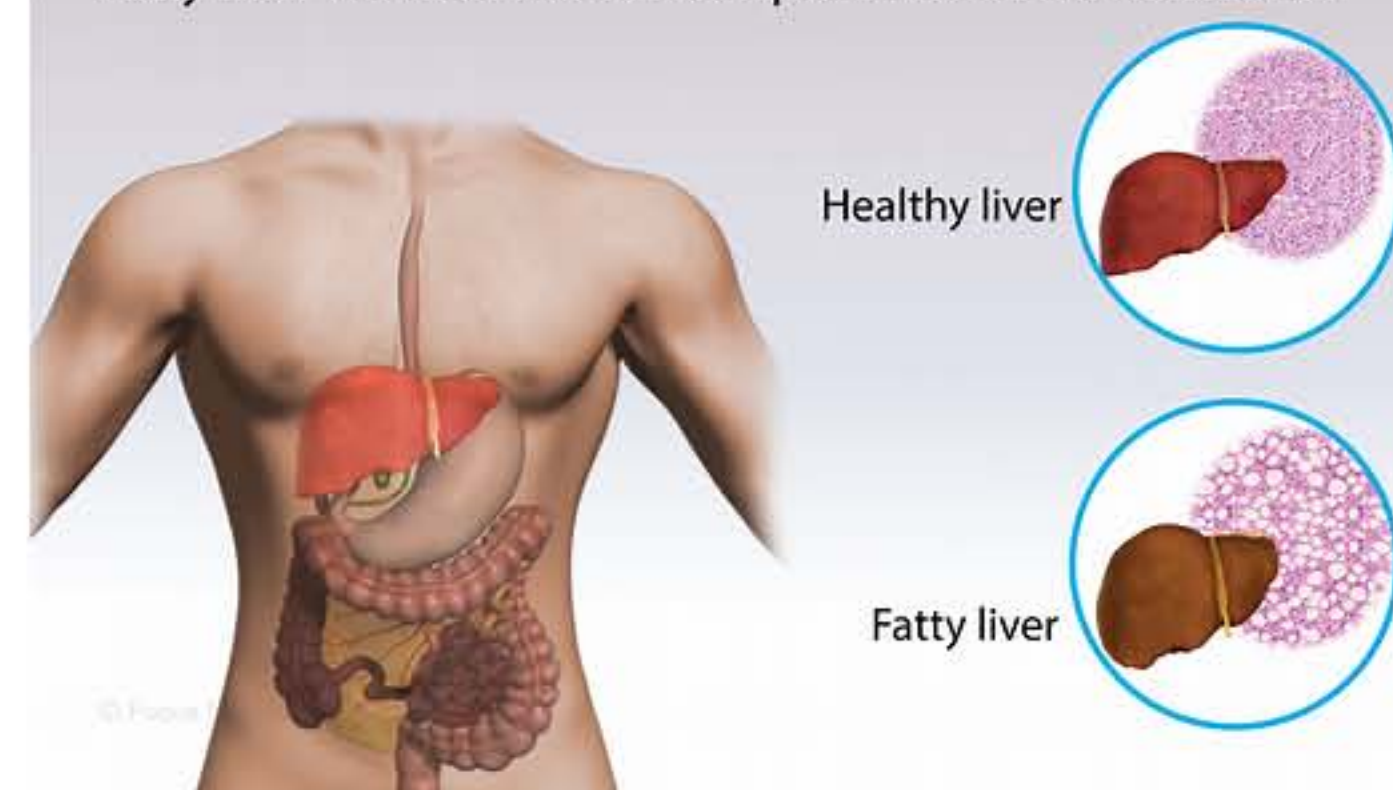
Publish Year: 2014

## Non-alcoholic fatty liver disease and cardiovascular risk ...

## Non-Alcoholic Fatty Liver Disease

Medical Condition

Fatty liver without the consumption of excessive alcohol



A condition in which fat accumulates in the liver in people who drink little or no alcohol.

- Very common (More than 3 million cases per year in US)
- Requires lab test or imaging
- Treatments can help manage condition, no known cure
- Can last several years or be lifelong

The cause of non-alcoholic fatty liver disease is not clearly understood. It is





国内版

国际版

Non-alcoholic fatty liver disease and Atherosclerosis at a cross



Sign in



ALL

IMAGES

VIDEOS

关闭取词

Add Bing Firefox extension >

16,500 Results

Any time ▾

## Non-alcoholic fatty liver disease: The diagnosis and ...

<https://www.ncbi.nlm.nih.gov/pmc/articles/PMC4411527>

Apr 28, 2015 · Non-alcoholic **fatty liver disease** (NAFLD) is now the most frequent chronic **liver disease** that occurs across all age groups and is recognized to occur in 14%-30% of the general population, representing a serious and growing clinical problem due to the growing prevalence of ...

Cited by: 156

Author: Abd El-Kader Sm, El-Den Ashmawy Em

Publish Year: 2015

## Cardiovascular Risk in Non-Alcoholic Fatty Liver Disease ...

<https://www.ncbi.nlm.nih.gov/pmc/articles/PMC6747357>

Aug 26, 2019 · Non-alcoholic **fatty liver disease** (NAFLD) is the most common chronic **liver disease** in developed countries. The natural course of the **disease** moves towards non-alcoholic steatohepatitis (NASH) and cirrhosis, implying that NAFLD will be the leading cause of **liver** transplantation by 2030 [ 1 ].

Author: Claudio Tana, Stefano Ballestri, Fabri...

Publish Year: 2019

## Pathogenesis of non-alcoholic fatty liver disease

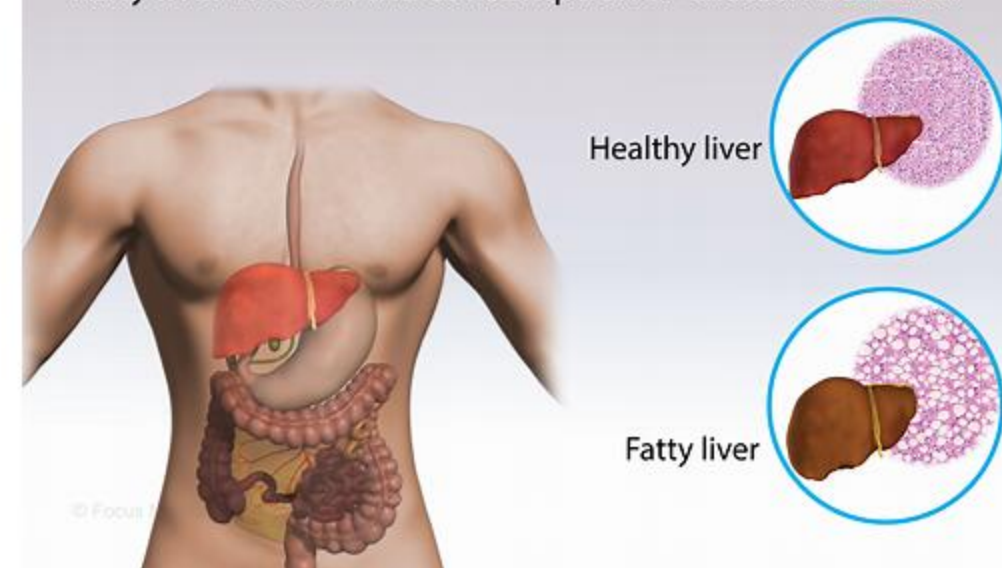
<https://www.ncbi.nlm.nih.gov/pmc/articles/PMC2810391>

Nov 12, 2000 · Pathogenesis of non-alcoholic fatty liver disease · Non-alcoholic fatty liver disease

## Non-Alcoholic Fatty Liver Disease

Medical Condition

Fatty liver without the consumption of excessive alcohol



A condition in which fat accumulates in the liver in people who drink little or no alcohol.

Very common (More than 2 million cases per year in