

Name of Journal: *World Journal of Gastroenterology*

Manuscript NO: 53857

Manuscript Type: MINIREVIEWS

Management of Barrett's esophagus with dysplasia refractory to radiofrequency ablation

Kara L Raphael, Arvind J Trindade

Radiofrequency ablation (RFA) is very effective for eradication of flat Barrett's mucosa in dysplastic Barrett's esophagus after endoscopic resection of raised lesions. However, in a minority of the time, RFA may be ineffective at eradication of the Barrett's mucosa. Achieving complete eradication of intestinal metaplasia can be challenging in these patients. This review article focuses on the management of patients with dysplastic Barrett's esophagus refractory to RFA

Match Overview

- | Match Number | Source | Words | Similarity |
|--------------|----------|---|------------|
| 1 | Crossref | 24 words
Srinadh Komanduri, Peter J Kahrilas, Kumar Krishnan, Tim M cGorisk, Kiran Bidari, David Grande, Laurie Keefer, John Pand | 1% |
| 2 | Internet | 14 words
crawled on 11-Jan-2020
www.thieme-connect.com | <1% |
| 3 | Crossref | 14 words
Rebecca Tuttle, Steven J. Nurkin, Steven N. Hochwald. "Abl...
ve Therapy for Esophageal Dysplasia and Early Malignancy: F | <1% |
| 4 | Internet | 13 words
crawled on 06-Jan-2020
f6publishing.blob.core.windows.net | <1% |
| 5 | Crossref | 12 words
Adam Chwiesko, Otylia Kowal-Bielecka, Stanislaw Sierakows
ki. "Perspectives on the interlinked nature of systemic sclero... | <1% |
| 6 | Crossref | 12 words
Samuel Han, Sachin Wani. "Quality Indicators in Endoscopic...
Ablation for Barrett's Esophagus", Current Treatment Options i | <1% |
| 7 | Crossref | 12 words
Qiang Hu, Tian-Tian Sun, Jie Hong, Jing-Yuan Fang, Hua Xion
g, Stephen J. Meltzer. "Proton Pump Inhibitors Do Not Reduce | <1% |

Management of Barrett's esophagus with dysplasia refra



ALL

IMAGES

VIDEOS

52,600 Results

Any time ▼

Managing Barrett's esophagus with radiofrequency ablation

<https://www.ncbi.nlm.nih.gov/pmc/articles/PMC3938010>

Mar 08, 2013 · In contrast, **ablative treatment** ensures that all **neoplastic cells** are eradicated. Further, cost-utility models show that **ablation** is the dominant or preferred strategy for **managing dysplastic BE** and that **alternative management strategies** for **dysplastic Barrett's** are less optimal [19–21].

Cited by: 5

Author: Junichi Akiyama, Andrew Roorda, Georg...

Publish Year: 2013

Management of Barrett Esophagus Following ...

<https://www.ncbi.nlm.nih.gov/pmc/articles/PMC6676349>

Apr 30, 2019 · Keywords: **Barrett esophagus**, dysplasia, **radiofrequency ablation**, **complications**, **durability Barrett esophagus** (BE) is a premalignant condition of the **esophagus** with the potential to progress to **esophageal adenocarcinoma** (EAC).

Author: Craig C. Reed, Nicholas J. Shaheen

Publish Year: 2019

Managing Barrett's esophagus with radiofrequency ablation ...

<https://academic.oup.com/gastro/article/1/2/95/561997> ▼

Management of Barrett's esophagus with dysplasia refract



ALL

IMAGES

VIDEOS

53,000 Results

Any time ▾

Managing Barrett's esophagus with radiofrequency ablation

<https://www.ncbi.nlm.nih.gov/pmc/articles/PMC3938010>

Mar 08, 2013 · In contrast, **ablative treatment** ensures that all **neoplastic cells** are eradicated. Further, cost-utility models show that **ablation** is the dominant or preferred strategy for **managing dysplastic BE** and that **alternative management strategies** for **dysplastic Barrett's** are less optimal [19–21].

Cited by: 5

Author: Junichi Akiyama, Andrew Roorda, Georg...

Publish Year: 2013

Managing Barrett's esophagus with radiofrequency ablation ...

<https://academic.oup.com/gastro/article/1/2/95/561997> ▾

Introduction

Patient Selection For RFA

RFA Methods and Practice



Barrett's esophagus (BE) is a metaplastic condition where the squamous esophageal epithelium is replaced by columnar epithelium containing goblet cells. BE occurs as a result of chronic injury and inflammation of esophageal epithelium due to reflux of gastro-duodenal contents in the context of gastro-esophageal reflux disease (GERD) and its estimated prevalence is about 10% among GERD patients . BE is a well-established pre-malignant lesion for esophageal adenocarcinoma [2, 3]. Adenocarcinoma...

[See more on academic.oup.com](#)

Cited by: 5

Author: Junichi Akiyama, Andrew Roorda, Georg...

Publish Year: 2013

Published: Mar 08, 2013

Management of Barrett Esophagus Following ...



ALL IMAGES VIDEOS MAPS NEWS SHOPPING

53,000 Results

Any time ▾

Managing Barrett's esophagus with radiofrequency ablation

<https://www.ncbi.nlm.nih.gov/pmc/articles/PMC3938010>

Mar 08, 2013 · In contrast, **ablative treatment** ensures that all **neoplastic cells** are eradicated. Further, cost-utility models show that **ablation** is the dominant or preferred strategy for **managing dysplastic BE** and that **alternative management strategies** for **dysplastic Barrett's** are less optimal [19–21].

Cited by: 5

Author: Junichi Akiyama, Andrew Roorda, Georg...

Publish Year: 2013

Managing Barrett's esophagus with radiofrequency ablation ...

<https://academic.oup.com/gastro/article/1/2/95/561997>



Introduction

Patient Selection For RFA

RFA Methods and Practice



Barrett's esophagus (BE) is a metaplastic condition where the squamous esophageal epithelium is replaced by columnar epithelium containing goblet cells. BE occurs as a result of chronic injury and inflammation of esophageal epithelium due to reflux of gastro-duodenal contents in the context of gastro-esophageal reflux disease (GERD) and its estimated prevalence is about 10% among GERD patients . BE is a well-established pre-malignant lesion for esophageal adenocarcinoma [2, 3]. Adenocarcinoma...

See more on academic.oup.com

Cited by: 5

Author: Junichi Akiyama, Andrew Roorda, Georg...

Publish Year: 2013

Published: Mar 08, 2013

Current management of Barrett esophagus and esophageal ...

<https://www.ccjm.org/content/86/11/724>

Nov 01, 2019 · **Dysplasia** is treated with **endoscopic eradication** by **ablation**, **resection**, or both. **Chemoprotective agents** are being studied to prevent progression to **dysplasia** in **Barrett esophagus**. The authors discuss current recommendations for **screening** and **management**.

Cited by: 1

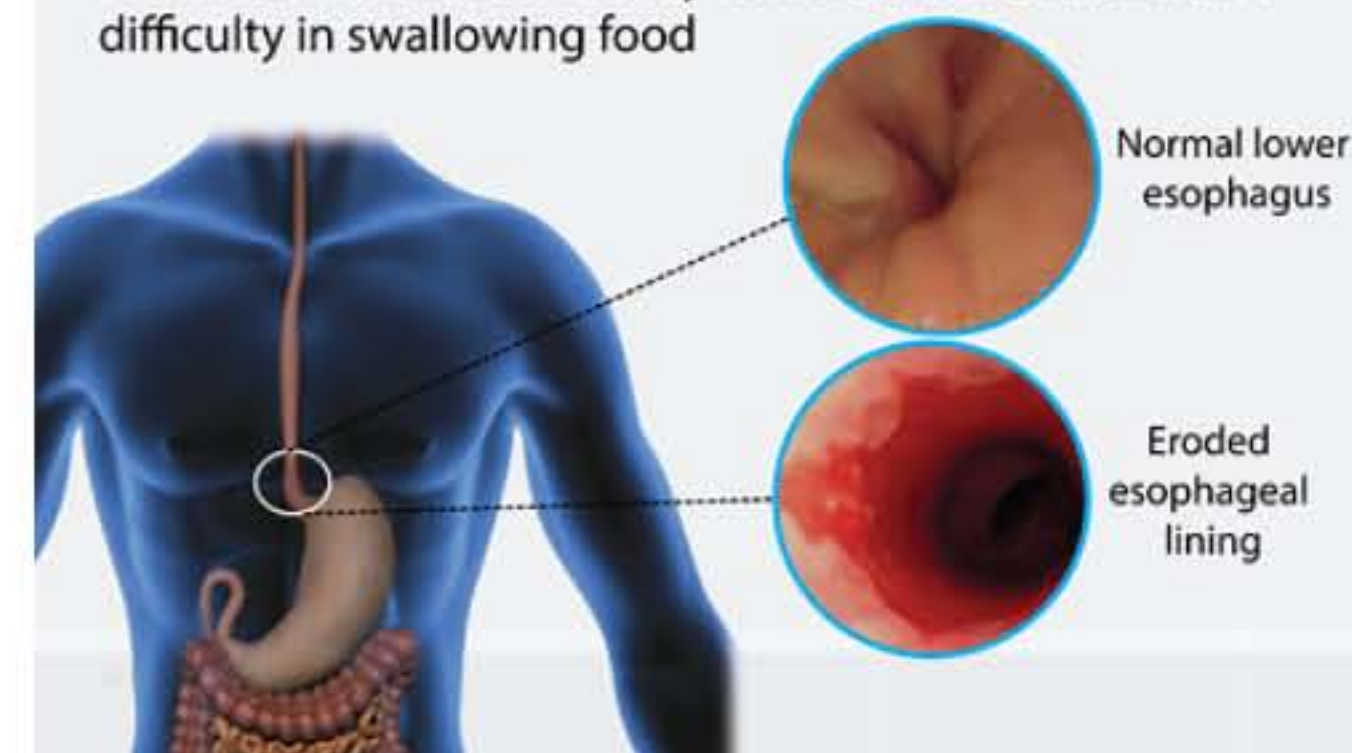
Author: Tavankit Singh, Vedha Sanghi, Prashanth...

Publish Year: 2019


Barrett's Esophagus

Medical Condition

A condition characterized by continuous heartburn and difficulty in swallowing food



Abnormal change of the cells present in the lower portion of the esophagus.

 Very common (More than 3 million cases per year in US)

 Often requires lab test or imaging

 Treatment from medical professional advised

 Can last several years or be lifelong

The cause is unknown. Most often seen in people with GERD. Symptoms include continuous heartburn and difficulty in swallowing food. Treatment includes surgery and therapy.

Symptoms