

Match Overview

1	Internet 31 words crawled on 06-Mar-2019 hcod.iums.ac.ir	1%
2	Crossref 30 words Nima Motamed, Behnam Rabiee, Hossein Poustchi, Baba k Dehestani et al. "Non-alcoholic fatty liver disease (NAFL ...	1%
3	Crossref 25 words Targher, Giovanni, Christopher D. Byrne, Amedeo Lonardo, Giacomo Zoppini, and Corrado Barbui. "Non-alcoholic fat ...	1%
4	Crossref 25 words Nengguang Fan, Lijuan Zhang, Zhenhua Xia, Liang Peng, Yufan Wang, Yongde Peng. "Sex-Specific Association betw	1%
5	Internet 21 words crawled on 31-Jan-2020 res.mdpi.com	1%
6	Internet 14 words crawled on 26-Jan-2020 f6publishing.blob.core.windows.net	<1%
7	Internet 13 words crawled on 17-Apr-2019 www.sleepclinic.be	<1%
8	Internet 10 words crawled on 31-Dec-2018 onlinelibrary.wiley.com	<1%
9	Internet 10 words crawled on 03-Jun-2018 www.wjgnet.com	<1%

⁶ **Name of Journal:** *World Journal of Hepatology*

Manuscript NO: 54621

Manuscript Type: ORIGINAL ARTICLE

Prospective Study

⁹ **Non-alcoholic fatty liver disease is not independent risk factor for cardiovascular disease event: A cohort study**

Motamed N *et al.* Relationships between NAFLD and CVD

Nima Motamed, Hossein Ajdarkosh, Maral Ahmadi, Dhayaneethie Perumal, G

Non-Alcoholic Fatty Liver Disease (NAFLD) is not Independent



ALL

IMAGES

VIDEOS

关闭取词

20,000 Results

Any time ▾

New evidence suggests that non-alcoholic fatty liver disease (NAFLD) has a strong multifaceted relationship with **diabetes and metabolic syndrome**, and is associated with increased risk of cardiovascular events, regardless of traditional risk factors, such as hypertension, diabetes, dyslipidemia, and obesity.

Cardiovascular Risk in Non-Alcoholic Fatty Liver Disease ...

www.ncbi.nlm.nih.gov/pmc/articles/PMC6747357/

Was this helpful?  

Non-Alcoholic Fatty Liver Disease and Cardiovascular Risk

<https://www.ncbi.nlm.nih.gov/pmc/articles/PMC2732016>

More than 65% of Americans are either overweight or obese. [1] Excess body weight predisposes individuals to **chronic diseases** such as **coronary artery disease**, **diabetes and nonalcoholic fatty liver disease (NAFLD)**. The **NAFLD** is one of the most common **causes of chronic liver disease** in ...

Cited by: 145

Author: Vijay Laxmi Misra, Mouen Khashab, Nag...

Publish Year: 2009

Cardiovascular Risk in Non-Alcoholic Fatty Liver Disease ...

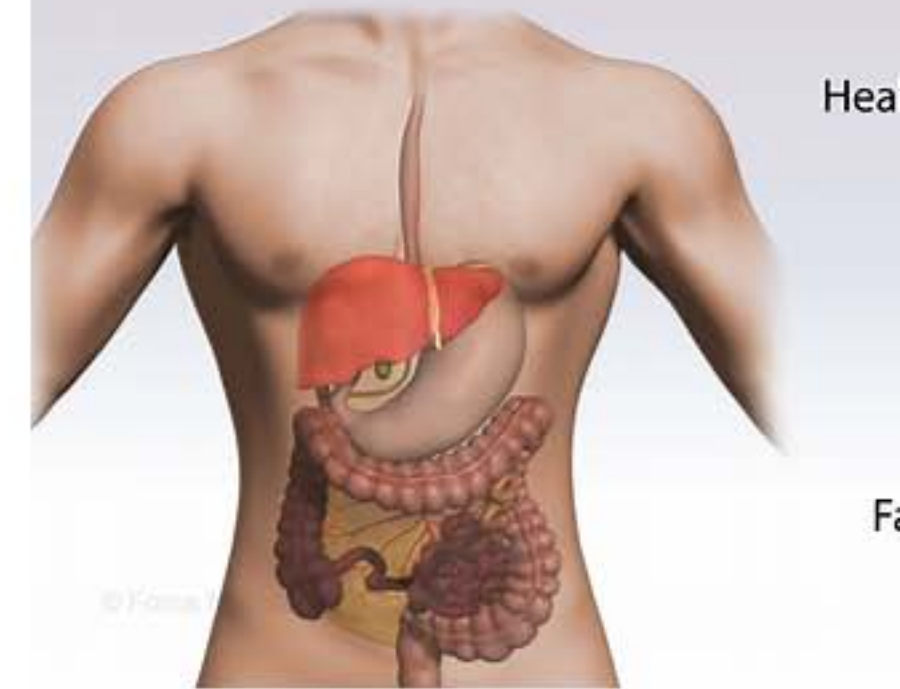
<https://www.ncbi.nlm.nih.gov/pmc/articles/PMC6747357>

Aug 26, 2019 - New evidence suggests that **non-alcoholic fatty liver disease (NAFLD)** has a strong multifaceted relationship with **diabetes and metabolic syndrome**, and is associated with increased risk of cardiovascular events, regardless of traditional risk factors, such as hypertension, diabetes, dyslipidemia, and obesity.

Non-Alcoholic Fatty Liver

Medical Condition


Fatty liver without the consumption




A condition in which fat accumulates in the liver without the consumption of alcohol.

 Very common (More than 3 million cases)

 Requires lab test or imaging

 Treatments can help manage condition,

 Can last several years or be lifelong

The cause of non-alcoholic fatty liver disease is associated with obesity, insulin resistance, hyp...



Non-alcoholic fatty liver disease is not independent risk f



ALL

IMAGES

VIDEOS

37,600 Results

Any time ▾

Non-Alcoholic Fatty Liver Disease and Cardiovascular Risk

<https://www.ncbi.nlm.nih.gov/pmc/articles/PMC2732016>

More than 65% of Americans are either overweight or obese. [1] Excess body weight predisposes individuals to **chronic diseases** such as **coronary artery disease**, diabetes and nonalcoholic fatty liver disease (NAFLD). The NAFLD is one of the most common causes of **chronic liver disease** ...

Cited by: 142

Author: Vijay Laxmi Misra, Mouen Khashab, Nag...

Publish Year: 2009

Cardiovascular Risk in Non-Alcoholic Fatty Liver Disease ...

<https://www.ncbi.nlm.nih.gov/pmc/articles/PMC6747357>

Aug 26, 2019 · New evidence suggests that non-alcoholic fatty liver disease (NAFLD) has a strong multifaceted relationship with **diabetes** and **metabolic syndrome**, and is associated with increased risk of **cardiovascular events**, regardless of traditional risk factors, such as **hypertension**, **diabetes**, **dyslipidemia**, and **obesity**.

Cited by: 1

Author: Claudio Tana, Stefano Ballestri, Fabrizio ...

Publish Year: 2019

Cardiovascular risk factors in non-alcoholic fatty liver ...

<https://onlinelibrary.wiley.com/doi/full/10.1111/liv.13973>

Sep 25, 2018 · 1 INTRODUCTION. Non-alcoholic **fatty liver disease** (NAFLD) has become the most prevalent **chronic liver disease** globally. 1 There is a bi-directional association between NAFLD and insulin resistance, diabetes and components of the metabolic syndrome . 2, 3 The most common cause of death in NAFLD is **cardiovascular disease** (CVD). 4, 5 However, while some studies indicate an increased risk ...

Cited by: 7

Author: Hannes Hagström, Hannes Hagström, Pa...

Publish Year: 2019

Studies on non-alcoholic fatty liver disease should ...

<https://www.bmj.com/content/367/bmj.l6495> ▾

Nov 22, 2019 · In a large, population based **cohort study**, Alexander and colleagues report that a diagnosis of non-alcoholic **fatty liver disease** (NAFLD) does **not** confer an increased **risk** of ischaemic heart **disease** or stroke.1 To translate these findings into clinical practice, we must appreciate the spectrum of NAFLD severity, especially as patients with advanced fibrosis have ...



Non-alcoholic fatty liver disease is not independent risk



ALL

IMAGES

VIDEOS

MAPS

NEWS

SHOPPING

37,700 Results

Any time ▾

Cardiovascular Risk in Non-Alcoholic Fatty Liver Disease ...

<https://www.ncbi.nlm.nih.gov/pmc/articles/PMC6747357>

Aug 26, 2019 · New evidence suggests that non-alcoholic fatty liver disease (NAFLD) has a strong multifaceted relationship with **diabetes** and **metabolic syndrome**, and is associated with increased risk of **cardiovascular events**, regardless of traditional risk factors, such as **hypertension**, **diabetes**, **dyslipidemia**, and **obesity**.

Cited by: 1

Author: Claudio Tana, Stefano Ballestri, Fabrizio ...

Publish Year: 2019

Non-Alcoholic Fatty Liver Disease and Cardiovascular Risk

<https://www.ncbi.nlm.nih.gov/pmc/articles/PMC2732016>

More than 65% of Americans are either overweight or obese. [1] Excess body weight predisposes individuals to **chronic diseases** such as **coronary artery disease**, diabetes and nonalcoholic fatty liver disease (NAFLD). The NAFLD is one of the most common causes of **chronic liver disease** ...

Cited by: 142

Author: Vijay Laxmi Misra, Mouen Khashab, Nag...

Publish Year: 2009

Cardiovascular risk factors in non-alcoholic fatty liver ...

<https://onlinelibrary.wiley.com/doi/full/10.1111/liv.13973>

Sep 25, 2018 · 1 INTRODUCTION. Non-alcoholic **fatty liver disease** (NAFLD) has become the most prevalent chronic **liver disease** globally. 1 There is a bi-directional association between NAFLD and insulin resistance, diabetes and components of the metabolic syndrome . 2, 3 The most common cause of death in NAFLD is **cardiovascular disease** (CVD). 4, 5 However, while some studies indicate an increased **risk** ...

Cited by: 7

Author: Hannes Hagström, Hannes Hagström, Pa...

Publish Year: 2019

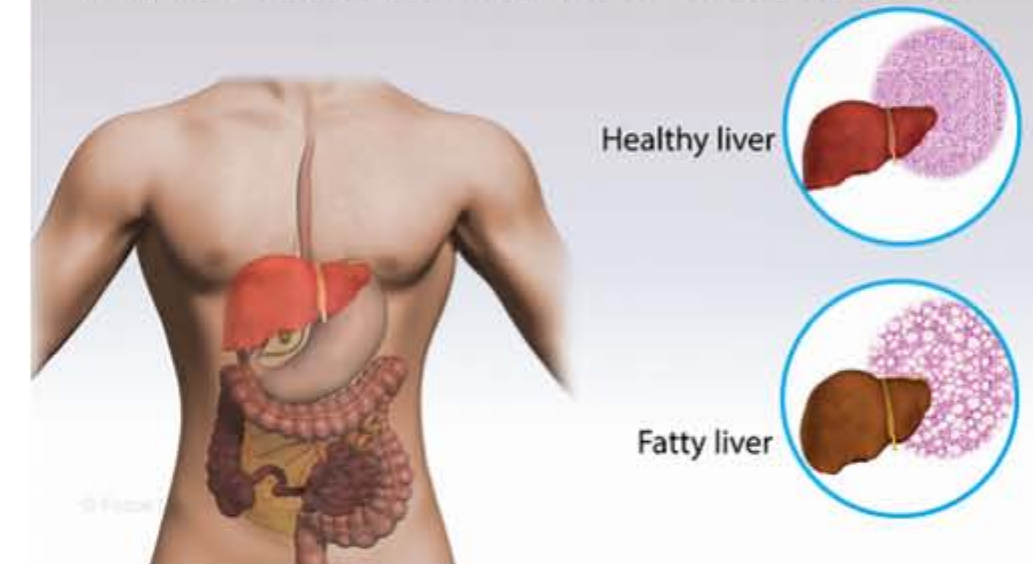
Studies on non-alcoholic fatty liver disease should ...

<https://global.bing.com/?FORM=Z9FD1> www.bmj.com/content/367/bmj.l6495

Non-Alcoholic Fatty Liver Disease

Medical Condition

Fatty liver without the consumption of excessive alcohol




A condition in which fat accumulates in the liver in people who drink little or no alcohol.

 Very common (More than 3 million cases per year in US)

 Requires lab test or imaging

 Treatments can help manage condition, no known cure

 Can last several years or be lifelong

The cause of non-alcoholic fatty liver disease is not clearly understood. It is associated with obesity, insulin resistance, hyperglycemia, and high levels of fat in blood. The condition does not usually cause symptoms. In some cases, fatigue, enlarged liver, and pain in the upper right abdomen is seen. Non-alcoholic fatty liver disease has no specific treatment. It involves treating underlying conditions such as obesity.