

World Journal of *Stem Cells*

World J Stem Cells 2020 June 26; 12(6): 406-526



**REVIEW**

- 406** Defining lung cancer stem cells exosomal payload of miRNAs in clinical perspective
Aramini B, Masciale V, Haider KH
- 422** Stem cell-based approaches: Possible route to hearing restoration?
Durán-Alonso MB
- 438** Recent advances of single-cell RNA sequencing technology in mesenchymal stem cell research
Zheng G, Xie ZY, Wang P, Wu YF, Shen HY
- 448** Energy metabolism in cancer stem cells
Zhu X, Chen HH, Gao CY, Zhang XX, Jiang JX, Zhang Y, Fang J, Zhao F, Chen ZG
- 462** Human hair follicle-derived mesenchymal stem cells: Isolation, expansion, and differentiation
Wang B, Liu XM, Liu ZN, Wang Y, Han X, Lian AB, Mu Y, Jin MH, Liu JY

MINIREVIEWS

- 471** Stem cell therapy for COVID-19 and other respiratory diseases: Global trends of clinical trials
Ji HL, Liu C, Zhao RZ
- 481** Multifaceted p21 in carcinogenesis, stemness of tumor and tumor therapy
Xiao BD, Zhao YJ, Jia XY, Wu J, Wang YG, Huang F
- 488** Strategies for treating oesophageal diseases with stem cells
Gao Y, Jin SZ

ORIGINAL ARTICLE**Basic Study**

- 500** Cytotoxicity of nonylphenol on spermatogonial stem cells *via* phosphatidylinositol-3-kinase/protein kinase B/mammalian target of rapamycin pathway
Lei JH, Yan W, Luo CH, Guo YM, Zhang YY, Wang XH, Su XJ

Retrospective Study

- 514** High tibial osteotomy with human umbilical cord blood-derived mesenchymal stem cells implantation for knee cartilage regeneration
Song JS, Hong KT, Kong CG, Kim NM, Jung JY, Park HS, Kim YJ, Chang KB, Kim SJ

ABOUT COVER

Editorial Board Member of *World Journal of Stem Cells*, Irfan Khan, PhD, Assistant Professor, Stem Cells Lab. P-132, Dr. Panjwani Center for Molecular Medicine and Drug Research, University of Karachi, Karachi 75270, Pakistan

AIMS AND SCOPE

The primary aim of *World Journal of Stem Cells (WJSC, World J Stem Cells)* is to provide scholars and readers from various fields of stem cells with a platform to publish high-quality basic and clinical research articles and communicate their research findings online.

WJSC publishes articles reporting research results obtained in the field of stem cell biology and regenerative medicine, related to the wide range of stem cells including embryonic stem cells, germline stem cells, tissue-specific stem cells, adult stem cells, mesenchymal stromal cells, induced pluripotent stem cells, embryoid bodies, embryonal carcinoma stem cells, hemangioblasts, hematopoietic stem cells, lymphoid progenitor cells, myeloid progenitor cells, etc.

INDEXING/ABSTRACTING

The *WJSC* is now indexed in PubMed, PubMed Central, Science Citation Index Expanded (also known as SciSearch®), Journal Citation Reports/Science Edition, Biological Abstracts, and BIOSIS Previews. The 2019 Edition of Journal Citation Reports cites the 2018 impact factor for *WJSC* as 3.534 (5-year impact factor: N/A), ranking *WJSC* as 16 among 26 journals in Cell and Tissue Engineering (quartile in category Q3), and 94 among 193 journals in Cell Biology (quartile in category Q2).

RESPONSIBLE EDITORS FOR THIS ISSUE

Responsible Electronic Editor: *Yan-Xia Xing*

Proofing Production Department Director: *Yun-Xiaojuan Wu*

Responsible Editorial Office Director: *Jin-Lai Wang*

NAME OF JOURNAL

World Journal of Stem Cells

ISSN

ISSN 1948-0210 (online)

LAUNCH DATE

December 31, 2009

FREQUENCY

Monthly

EDITORS-IN-CHIEF

Carlo Ventura

EDITORIAL BOARD MEMBERS

<https://www.wjgnet.com/1948-0210/editorialboard.htm>

PUBLICATION DATE

June 26, 2020

COPYRIGHT

© 2020 Baishideng Publishing Group Inc

INSTRUCTIONS TO AUTHORS

<https://www.wjgnet.com/bpg/gerinfo/204>

GUIDELINES FOR ETHICS DOCUMENTS

<https://www.wjgnet.com/bpg/GerInfo/287>

GUIDELINES FOR NON-NATIVE SPEAKERS OF ENGLISH

<https://www.wjgnet.com/bpg/gerinfo/240>

PUBLICATION ETHICS

<https://www.wjgnet.com/bpg/GerInfo/288>

PUBLICATION MISCONDUCT

<https://www.wjgnet.com/bpg/gerinfo/208>

ARTICLE PROCESSING CHARGE

<https://www.wjgnet.com/bpg/gerinfo/242>

STEPS FOR SUBMITTING MANUSCRIPTS

<https://www.wjgnet.com/bpg/GerInfo/239>

ONLINE SUBMISSION

<https://www.f6publishing.com>

Human hair follicle-derived mesenchymal stem cells: Isolation, expansion, and differentiation

Bo Wang, Xiao-Mei Liu, Zi-Nan Liu, Yuan Wang, Xing Han, Ao-Bo Lian, Ying Mu, Ming-Hua Jin, Jin-Yu Liu

ORCID number: Bo Wang (0000-0001-9998-9979); Xiao-Mei Liu (0000-0003-4526-4985); Zi-Nan Liu (0000-0002-2597-5109); Yuan Wang (0000-0001-9527-3711); Xing Han (0000-0002-0343-8090); Ao-Bo Lian (0000-0002-9491-5353); Ying Mu (0000-0002-4322-2522); Ming-Hua Jin (0000-0002-2120-2977); Jin-Yu Liu (0000-0002-1000-9434).

Author contributions: Wang B wrote the paper; Liu XM and Liu JY revised the manuscript; Liu ZN, Wang Y, Han X, Lian AB, Mu Y, and Jin MH collected the data.

Supported by the National Natural Science Foundation of China, No. 81573067; the Joint Construction Project between Jilin Province and Provincial Colleges, No. SXGJQY2017-12; the Jilin Province Science and Technology Development Plan, No. 20190304044YY; the Innovative Special Industry Fund Project in Jilin Province, No. 2018C049-2; and the Open Research Project of the State Key Laboratory of Industrial Control Technology, Zhejiang University, China, No. ICT1800381.

Conflict-of-interest statement: Liu JY reports grants from the China National Natural Science Foundation, grants from the Joint Construction Project between Jilin Province and Provincial Colleges, grants from the Jilin Province Science and Technology Development Plan, grants from the Innovative Special Industry Fund Project in Jilin Province, grants from the Open Research Project of the State Key Laboratory of Industrial Control Technology, Zhejiang University, China, during

Bo Wang, Xiao-Mei Liu, Zi-Nan Liu, Yuan Wang, Xing Han, Ao-Bo Lian, Ming-Hua Jin, Jin-Yu Liu, Department of Toxicology, School of Public Health, Jilin University, Changchun 130021, Jilin Province, China

Ying Mu, Research Center for Analytical Instrumentation, Institute of Cyber-Systems and Control, State Key Laboratory of Industrial Control Technology, Zhejiang University, Hangzhou 310000, Zhejiang Province, China

Corresponding author: Jin-Yu Liu, PhD, Dean, Professor, Department of Toxicology, School of Public Health, Jilin University, 1163 Xinmin Avenue, Changchun 130021, Jilin Province, China. jy_liu@jlu.edu.cn

Abstract

Hair follicles are easily accessible skin appendages that protect against cold and potential injuries. Hair follicles contain various pools of stem cells, such as epithelial, melanocyte, and mesenchymal stem cells (MSCs) that continuously self-renew, differentiate, regulate hair growth, and maintain skin homeostasis. Recently, MSCs derived from the dermal papilla or dermal sheath of the human hair follicle have received attention because of their accessibility and broad differentiation potential. In this review, we describe the applications of human hair follicle-derived MSCs (hHF-MSCs) in tissue engineering and regenerative medicine. We have described protocols for isolating hHF-MSCs from human hair follicles and their culture condition in detail. We also summarize strategies for maintaining hHF-MSCs in a highly proliferative but undifferentiated state after repeated *in vitro* passages, including supplementation of growth factors, 3D suspension culture technology, and 3D aggregates of MSCs. In addition, we report the potential of hHF-MSCs in obtaining induced smooth muscle cells and tissue-engineered blood vessels, regenerated hair follicles, induced red blood cells, and induced pluripotent stem cells. In summary, the abundance, convenient accessibility, and broad differentiation potential make hHF-MSCs an ideal seed cell source of regenerative medical and cell therapy.

Key words: Human hair follicle; Regenerative therapy; Mesenchymal stem cell; Tissue engineering; Cell differentiation

©The Author(s) 2020. Published by Baishideng Publishing Group Inc. All rights reserved.

Core tip: In this review, we describe the applications of human hair follicle-derived mesenchymal stem cells (hHF-MSCs) in tissue engineering and regenerative medicine.

the conduct of the study.

Open-Access: This article is an open-access article that was selected by an in-house editor and fully peer-reviewed by external reviewers. It is distributed in accordance with the Creative Commons Attribution NonCommercial (CC BY-NC 4.0) license, which permits others to distribute, remix, adapt, build upon this work non-commercially, and license their derivative works on different terms, provided the original work is properly cited and the use is non-commercial. See: <http://creativecommons.org/licenses/by-nc/4.0/>

Manuscript source: Unsolicited manuscript

Received: February 27, 2020

Peer-review started: February 27, 2020

First decision: May 5, 2020

Revised: May 18, 2020

Accepted: May 29, 2020

Article in press: May 29, 2020

Published online: June 26, 2020

P-Reviewer: Labusca L

S-Editor: Yan JP

L-Editor: Wang TQ

E-Editor: Xing YX



We describe protocols for isolating hHF-MSCs from human hair follicles and their culture condition in detail. We also summarize strategies for maintaining hHF-MSCs in a highly proliferative but undifferentiated state after repeated *in vitro* passages, including supplementation of growth factors, 3D suspension culture technology, and 3D aggregates of MSCs. In addition, we report the potential of hHF-MSCs in obtaining induced smooth muscle cells and tissue-engineered blood vessels, regenerated hair follicles, induced red blood cells, and induced pluripotent stem cells.

Citation: Wang B, Liu XM, Liu ZN, Wang Y, Han X, Lian AB, Mu Y, Jin MH, Liu JY. Human hair follicle-derived mesenchymal stem cells: Isolation, expansion, and differentiation. *World J Stem Cells* 2020; 12(6): 462-470
URL: <https://www.wjgnet.com/1948-0210/full/v12/i6/462.htm>
DOI: <https://dx.doi.org/10.4252/wjsc.v12.i6.462>

INTRODUCTION

The hair follicle is a skin appendage and dynamic mini-organ derived from tightly coordinated interactions between prototypic ectodermal-mesodermal cells early in embryogenesis. The hair follicle is easily accessible and contain stem cells from different developmental origins, such as epithelial stem cells, melanocyte stem cells, and mesenchymal stem cells (MSCs)^[1]. These stem cells continuously self-renew, differentiate, regulate hair follicle development, and contribute to hair follicle cycles which consist of the growth phase (anagen), regression phase (catagen), and rest phase (telogen) throughout adult life^[2]. During catagen and telogen, follicles prepare their stem cells for the next anagen. During anagen, bulge stem cells are activated by induction signals from the dermal papilla and migrate downward to the bulb region, where they proliferate and differentiate to regenerate the inner and outer root sheath, matrix, and hair shaft.

Many studies have focused on the epidermal stem cell lineage, which lies within the bulge region of the hair follicle, compared to MSCs derived from the dermal papilla or dermal sheath. In a pioneering study, Lako *et al*^[3] first demonstrated that dermal papilla and dermal sheath cells from transgenically marked donor mice could produce multiple lineages of the hematopoietic system in lethally irradiated mice, indicating the presence of multipotent stem cells in the dermal papilla and dermal sheath. Subsequent studies showed that dermal papilla or sheath cells from rat follicles expressed the cell-surface markers CD44, CD73, and CD90 as bone marrow MSCs and resembled bone marrow MSCs in their ability to differentiate toward the adipogenic, osteogenic, and chondrogenic lineages^[4,5]. In 2006, the International Society for Cellular Therapy issued the minimal criteria for characterizing human MSCs. Specifically, cultured MSCs should be adherent fibroblast-like cells, express the surface markers CD105, CD73, and CD90, and lack the expression of CD45, CD34, CD14 or CD11b, CD79α or CD19, and human leukocyte antigen-DR isotype. Furthermore, MSCs have osteogenic, adipogenic and chondrogenic differentiation potential *in vitro*^[6]. Therefore, dermal papilla or sheath cells from rat follicles may be a type of MSCs. A later study extended these findings to the human system and confirmed that dermal papilla or sheath cells from human hair follicles expressed the MSC immunophenotype and possessed multi-lineage differentiation potential; therefore, they were named human hair follicle-derived MSCs (hHF-MSCs)^[7]. Based on these previous studies, the hair follicle may be a readily accessible source of autologous human MSCs that can be used for tissue engineering and regenerative medicine.

Here, methods for isolating and expanding hHF-MSCs are presented and important recent advances in understanding the multi-potential of hHF-MSCs are summarized.

ISOLATION OF hHF-MSCs

When isolating hHF-MSCs, the first step is to obtain a complete hair follicle. When obtaining human tissues, studies should be conducted in accordance with the guidelines of the Helsinki declaration and appropriate ethical approvals should be in place. A frequently used method is to use collagenase type I to separate the intact hair

follicle from the human scalp skin^[8]. An intact hair follicle usually includes inner root sheath, outer root sheath, and connective tissue sheath (dermal sheath) as shown in **Figure 1**. The human scalp skin is usually obtained by skin biopsy from the scalp of a donor under sterile conditions^[7]. The obtained skin tissues are often full-thickness and therefore have an epidermis, dermis, and dermal white adipose tissue, as hair follicles are located in the adipose tissue. First, skin tissues are intensively rinsed with phosphate-buffered saline (PBS) containing 1% penicillin/streptomycin solution, trimmed to remove underlying adipose tissues, cut into 2–4-mm small pieces, and digested with 1 mg/mL collagenase type I at 37 °C with occasional agitation. After 4 h of enzymatic dissociation, the epidermis can be peeled off from the dermis, and single-hair follicles are released from the dermis, filtered through a 40-mm cell strainer, and washed thoroughly with PBS to prevent contaminating the epidermal or dermal cells.

Another method is to obtain complete hair follicles by directly plucking them from the occipital region of the scalps, which eliminates invasive procedures associated with sampling^[9,10]. Hairs with intact follicles should be extensively washed with PBS containing 1% penicillin/streptomycin solution. The hair shafts are cut off, and the remaining hair follicles are manually transferred to the bottom of a 96-well plate, with one follicle per well, and cultured in 100 µL of Dulbecco's modified Eagle's medium (DMEM) supplemented with 10% fetal bovine serum (FBS) and 10 ng/mL basic fibroblast growth factor (bFGF) to allow for cell migration to the tissue culture plastic in a 37 °C/5% CO₂ incubator. Cells originating from the bulge region can be visually identified as epidermal keratinocytes, whereas cells migrating out of the dermal sheath or papilla show the morphological appearance of mesenchymal cells (fibroblast-like cells) (**Figure 2**). The wells populated with cells migrating from the dermal sheath or papilla are digested, pooled, and expanded under the same culture conditions. It should be noted that the cells migrating from the dermal papilla may contain a small number of neural crest stem cell-like cells. They can form neurospheres under serum-free culture conditions containing N-2, B-27, bFGF, and epidermal growth factor (EGF)^[11]. Li *et al.*^[12] found that the sphere-forming cells contained 1.14% ± 0.03% of dermal papilla cells. However, these neural crest stem cell-like cells need to be supplemented with ITS supplement and EGF when cultured *in vitro*^[13]. Therefore, they will gradually disappear with the increase of passage times under the hHF-MSCs culture conditions.

MSCs can also be separated from the dermal papilla or dermal sheath alone. Briefly, each strand of the hair follicle can be gently separated by microdissection away from the scalp tissues, ensuring that the dermal sheath and dermal papilla are intact. To isolate dermal sheath MSCs, the hair follicle is digested with 0.1% collagenase and 0.25% Dispase II at 37 °C for 30 min and then the dermal sheath is carefully separated from the main shaft of the hair follicle with a 30G needle under a dissecting microscope^[14]. After chopping the dermal sheath with scalpel blades, the samples are treated with 0.1% trypsin/0.02 M EDTA for 30 min at 37 °C. DMEM supplemented with 10% FBS and 10 ng/mL bFGF is used to quench the trypsinization process. After collecting the cell suspension from the dish into a centrifuge tube, the cell suspension is centrifuged at 200 × g for 5 min, aspirated to remove the supernatant, resuspended in an appropriate volume of the same medium, and expanded as hHF-MSCs.

As the dermal papilla is engulfed within the hair matrix, an inversion technique can be used to separate dermal papilla MSCs (DP-MSCs)^[4,15]. First, using a pair of scissors, the follicle through the matrix just above the papilla is transected to isolate the end bulb. Next, a fine needle can be used to invert the collagen capsule structure of the end bulb and expose the hair matrix and the dermal papilla residing inside. After removing the matrix component and any epithelial tissue still present from the papilla, the samples are cultured in DMEM supplemented with 20% FBS to allow for cell migration to the culture plate in a 37 °C/5% CO₂ incubator. Once the cells have proliferated to confluency, they can be passaged using standard cell culture techniques and the culture medium can be changed to DMEM supplemented with 10% FBS and 10 ng/mL bFGF.

EXPANSION OF hHF-MSCs

Currently, conventional cell culture techniques are still used to expand hHF-MSCs^[16]. Briefly, the isolated hHF-MSCs are seeded into a 100-mm cell culture dish and cultured in DMEM supplemented with 10% FBS and 10 ng/mL bFGF in a 37 °C/5% CO₂ incubator. The medium (10 mL for 100-mm plate) should be refreshed every 2 d. Once the cells are approximately 90% confluent, they should be sub-cultured using

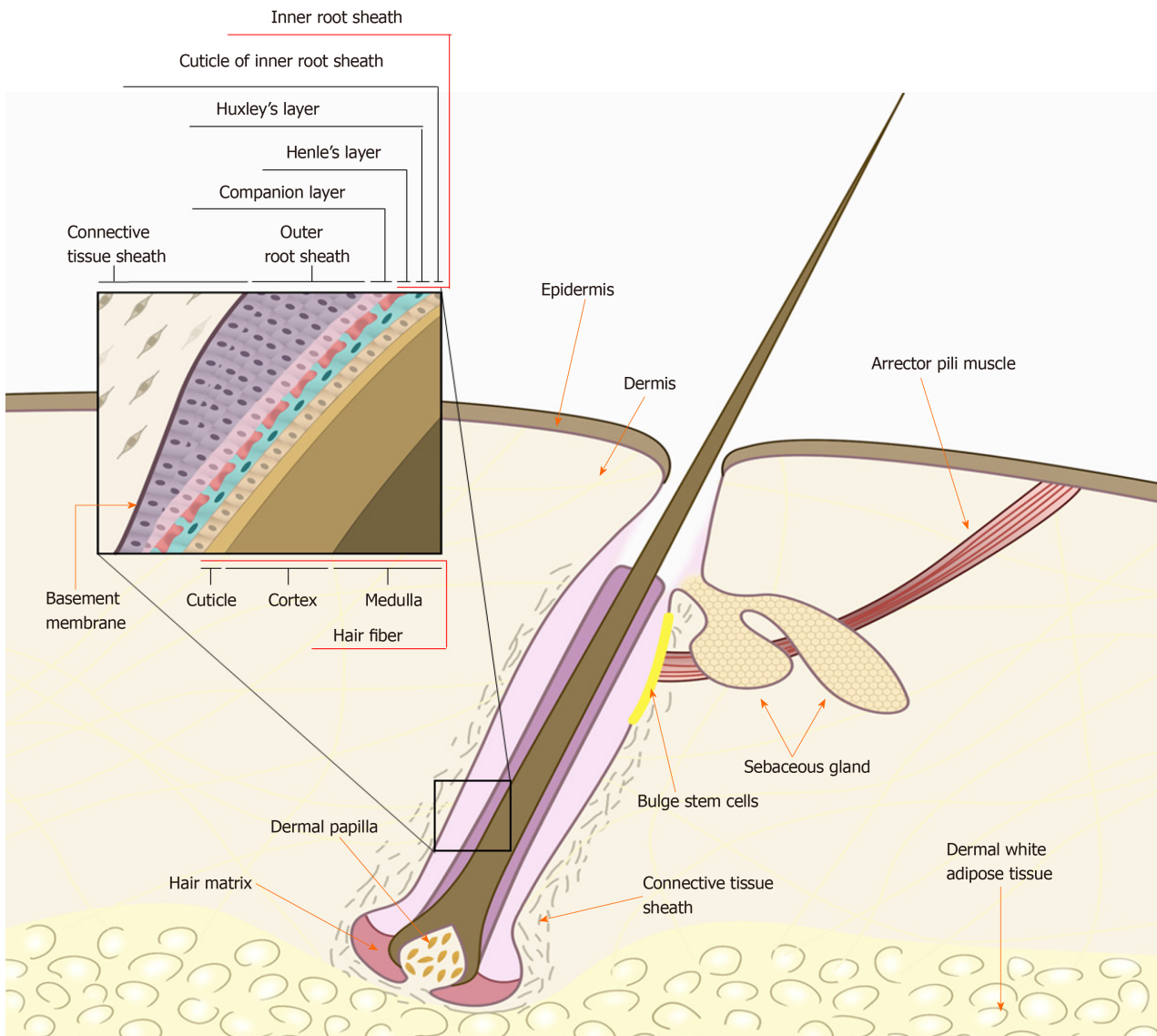


Figure 1 Schematic of the human hair follicle. An intact hair follicle usually includes the inner root sheath, outer root sheath, and connective tissue sheath (dermal sheath). The human hair follicle mesenchymal stem cells lie within the dermal papilla or dermal sheath (connective tissue sheath) of the hair follicle. Citation: Kiani MT, Higgins CA, Almquist BD. The Hair Follicle: An Underutilized Source of Cells and Materials for Regenerative Medicine. *ACS Biomater Sci Eng* 2018; 4: 1193-1207. Copyright© The Authors 2018. Published by American Chemical Society.

0.1% trypsin/0.02 M EDTA in a 100-mm cell culture dish.

For cell therapy and tissue engineering, a large number of hHF-MSCs with highly proliferative and multipotent differentiation potential are required. However, application of hHF-MSCs is restricted because they show replicative cell senescence and loss of multipotency in long-term *in vitro* culture^[17,18]. Bajpai *et al*^[19] found that hHF-MSCs could be maintained in culture for 11-12 passages (approximately 36 population doublings) before they started to show signs of cellular senescence. In addition to the 8-10 population doublings that occurred during the initial isolation and expansion stage, they may also undergo a total of 44-46 population doublings. It was estimated that a hair follicle could yield approximately 10^{15} hHF-MSCs before senescence occurred^[19]. It is important to develop effective strategies for maintaining hHF-MSCs in a highly proliferative but undifferentiated state after repeated *in vitro* passages. bFGF is a well-known growth factor that plays a critical role in the self-renewal, high proliferation, and multi-lineage differentiation potential of MSCs^[20-22]. Similarly, bFGF has been widely used in large-scale expansion of hHF-MSCs, particularly to prevent myogenic differentiation^[7]. Other growth factors, such as acidic FGF and EGF, have also been tested and shown to play a similar role in the expansion culture of hHF-MSCs^[23]. In recent years, some transcription factors have also been found to play a role in maintaining the proliferative capacity and multipotency of hHF-MSCs. Studies showed that ectopic expression of NANOG promotes cell proliferation and delays hHF-MSC senescence by upregulating PBX1 and activating

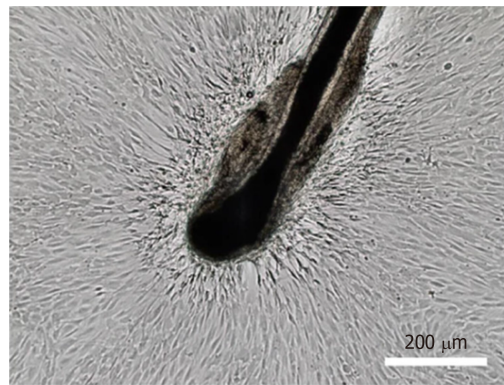


Figure 2 Isolation of human hair follicle mesenchymal stem cells. Human hair follicle mesenchymal stem cells migrating out of the dermal sheath or papilla show the morphological appearance of fibroblast-like cells. Bar: 200 μ m. Citation: Jiang Y, Liu F, Zou F, Zhang Y, Wang B, Zhang Y, Lian A, Han X, Liu Z, Liu X, Jin M, Wang D, Li G, Liu J. PBX homeobox 1 enhances hair follicle mesenchymal stem cell proliferation and reprogramming through activation of the AKT/glycogen synthase kinase signaling pathway and suppression of apoptosis. *Stem Cell Res Ther* 2019; 10: 268. Copyright© The Authors 2019. Published by Springer Nature.

AKT signaling^[16,24]. Lu *et al*^[25] also found that overexpression of OCT4 promoted the transcriptional activation of DNMTs, leading to elevated methylation of the p21 promoter, which promoted the proliferation and suppression of senescence of hHF-MSCs.

Moreover, compared to conventional 2D cell culture techniques, 3D-cultured MSCs show a higher yield in the same culture volume and stronger multipotency in large-scale generation of MSCs^[26,27]. Stirred-tank bioreactors with suspending microcarriers are the most widely used approach for the 3D culture of MSCs on a large scale. Stirred-tank bioreactors can make full use of the cultivation space and homogenized culture conditions, and enable process control, such as maintenance of pH and dissolved oxygen and medium supplementation^[28]. In addition, microcarriers offer a high surface area to volume ratio for the immobilization and expansion of adherent cells, and avoid the potential risks of tumorigenesis due to mutations caused by consecutive passaging^[29,30]. Our team utilized macroporous CultiSpher-G microbeads as microcarriers for the 3D culture of hHF-MSCs in stirred-tank bioreactors. The results revealed that hHF-MSCs quickly adhered to the microspheres and showed a 26-fold increase in the cumulative cell number after 12 d of expansion, with no significant difference in differentiation potential compared to 2D culture^[31].

In addition to microcarrier culture, 3D aggregate or spheroid culture without carrier and substrate provides enhanced cell-cell interactions and more accurately mimics the *in vivo* niche of MSC, which has been developed to expand MSCs^[32]. Previous studies demonstrated that 3D aggregates of MSCs exhibited higher proliferation efficiency, increased stemness and differentiative capacity, enhanced anti-inflammatory and angiogenic properties, and increased survival of transplanted cells compared to conventional 2D cell culture techniques^[33-35]. Recently, Topouzi *et al*^[15] and Higgins *et al*^[36] reported that 3D aggregates of DP-MSCs created by hanging drop cultures can restore the intact dermal papilla transcriptional signature and induce *de novo* hair follicles in non-hair-bearing human skin. However, few studies have evaluated 3D aggregates of hHF-MSCs, which remains a promising research direction.

DIFFERENTIATION OF hHF-MSCs

Similar to bone marrow MSCs, hHF-MSCs show adipogenic, osteogenic, and chondrogenic differentiation in the appropriate induction medium^[23,37]. Apart from their trilineage differentiation potential, accumulating evidence has demonstrated the potential therapeutic value of these cells in regenerative medicine by differentiating into smooth muscle cells (SMCs) and cell types of multiple different lineages. Here, we describe the differentiation potential of hHF-MSCs in detail.

Myogenic differentiation of hHF-MSCs

SMCs play a critical role in the occurrence and development of prevalent cardiovascular and respiratory diseases, such as atherosclerosis^[38] and asthma^[39], because of their contractile dysfunction. Emerging tissue engineering techniques offer

the possibility of reconstructing functional vessel walls by SMCs^[40]. Andrique *et al*^[41] used SMCs and endothelial cells to produce functional blood vessels with the correct configuration of lumen, which could also react to vasoconstrictor agents. hHF-MSCs have great potential to differentiate into SMCs. Using a tissue-specific promoter, a previous study showed that the smooth muscle alpha-actin promoter (P- α SMA) and fluorescence-activated cell sorting method can be used to isolate P- α SMA cells from hHF-MSCs^[7]. P- α SMA cells expressed specific markers of SMCs, including α SMA, calponin, and smooth muscle myosin heavy chain, and generated strong contractility in response to vasoactive agonists^[7]. The defining property of SMCs is their ability to generate contraction; thus, P- α SMA cells are considered as SMCs^[7]. Although this technique can achieve separation of a pure population of SMCs, it has the potential risk of foreign virus integration into the chromosome. Xu *et al*^[42] induced hHF-MSCs into contractile SMCs by stimulation with transforming growth factor β 1 and platelet-derived growth factor BB, which avoided the risk of effects from the lentiviral vector. In addition, Gao *et al*^[43] constructed tissue-engineered blood vessels using filled acellular umbilical arteries with hHF-MSCs under the regulation of transforming growth factor β 1, and the arterial grafts showed considerable vasoreactivity in response to humoral constrictors.

Application of hHF-MSCs in hair regeneration

hHF-MSCs are mainly located in the dermal papilla and dermal sheath of hair follicles and play an important role in regulating repeated hair follicle morphogenesis in adult life. A decrease in the number of hHF-MSCs per follicle can cause hair thinning and loss^[44]. Recently, Gentile *et al*^[45,46] used the medical device Rigenacons to develop autologous micro-grafts enriched in hHF-MSCs to treat androgenetic alopecia. The micro-grafts were obtained by centrifugation of a 2-mm punch biopsy of the scalp with the selection of a cell population with a diameter of 50 μ m. The mean hair density was increased significantly over baseline value after treatment with micro-grafts enriched of hHF-MSCs^[45]. Hair follicle morphogenesis is induced by tightly coordinated epithelial-mesenchymal interactions in the developing embryo. Similarly, bioengineered hair follicles can be prepared by the self-organization of epithelial and mesenchymal cells^[47]. In previous studies, murine hair follicle regeneration was achieved by intracutaneous transplantation of the bioengineered hair-follicle germ, which is generated by multicellular organization of follicle-derived epithelial stem cells and HF-MSCs in 3D stem cell culture. The bioengineered hair follicle exhibited similar tissue structures to the murine natural vibrissa follicle and grow pelage^[48]. These results suggest that hHF-MSCs are an important source of seed cells for human hair tissue engineering.

Hematopoietic differentiation potential of hHF-MSCs

Shortage of red blood cells caused by a lack of voluntary donations can threaten the lives of patients who require transfusion. hHF-MSCs may alleviate this dilemma because of their ability to differentiate into blood cells. A previous study showed that dermal papilla and dermal sheath cells generate hematopoietic colonies *in vitro*, and can contribute to multi-lineage hematopoietic reconstitution *in vivo* after transplantation into lethally irradiated recipient mice^[3]. Recently, Liu *et al*^[49] induced mature erythrocytes from hHF-MSCs by overexpressing OCT4 and hematopoietic cytokine exposure. This mature erythrocyte contained no nuclei, and expressed mainly the adult β -globin chain and rarely the fetal γ -globin chain. Numerous studies have shown that red blood cells produced from induced pluripotent stem cells (iPSCs) are generally incompletely enucleated and rarely express the adult β -globin chain, although iPSCs have been widely used to investigate treatments for diseases of the blood system^[50,51]. Therefore, hHF-MSCs may provide an alternative source of erythrocytes for potential autologous transfusion.

iPSCs from hHF-MSCs

iPSCs are a suitable seed cell source for regenerative medicine because their broad differentiation potential is similar to that of embryonic stem cells^[52]. iPSCs can be induced from somatic cells by ectopic expression of defined transcription factors^[53]. In a groundbreaking study, Wang *et al*^[10] successfully reprogrammed hHF-MSCs into iPSCs by lentiviral transduction with Yamanaka factors (OCT4, SOX2, C-MYC, and KLF4). These HF-MSC-derived iPSCs (HF-iPSCs) showed similar characteristics to embryonic stem cells in colony morphology, expression of alkaline phosphatase, and expression of specific human embryonic stem cells (hESCs) surface markers and endogenous pluripotent genes; additionally, HF-iPSCs formed teratomas containing representatives of all three germ layers after intramuscular injection into immunocompromised mice^[10]. HF-iPSCs have further expanded the application of hHF-MSCs in regenerative medicine. Bajpai *et al*^[54] derived contractile SMCs using

HF-iPSCs. Shi *et al*^[55] reprogrammed HF-iPSCs into functional hepatocytes expressing hepatic markers and drug metabolism-related genes. However, reprogramming of hHF-MSCs into iPSCs by lentiviral transduction with Yamanaka factors, although highly reproducible, is an inefficient method; therefore, identifying important transcription factors that can improve the efficiency of programming has become a research focus. Recently, our team found that co-transduction of PBX1 and Yamanaka factors into hHF-MSCs significantly improved the reprogramming efficiency by activating the AKT/GSK3 β signaling pathway^[56]. These results contribute to mass production of HF-iPSCs and further support the potential of hHF-MSCs in regenerative medicine.

CONCLUSION

hHF-MSCs have high proliferation ability and broad differentiation potential, and can be easily accessed by direct plucking of human hairs, showing numerous advantages over other cell sources in various clinical applications. We have described the tremendous capacities of hHF-MSCs in obtaining induced SMCs and tissue-engineered blood vessels, regenerated hair follicle, and induced red blood cells, as well as produced iPSCs in this review. However, hHF-MSC multipotency remains relatively unexplored as compared to the epidermal stem cell lineage in hair follicles or other human MSCs. The capacity for differentiation into other cell lineages as well as epigenetic modification during differentiation require further analysis. In addition, the role of hHF-MSCs in cell therapy has been investigated. hHF-MSCs transduced with the human hepatocyte growth factor (hHGF) gene can continuously secrete transgenic hHGF to promote liver cell regeneration and alleviate hepatic fibrosis^[57]. Engineered hHF-MSCs transduced with the release-controlled insulin gene can release human insulin in response to rapamycin and exhibited dramatic functionality in reversing hyperglycemia with no formation of detectable tumors after engraftment into mice^[58]. In summary, hHF-MSCs are a promising source of cells for the rapidly emerging field of cell therapy and tissue engineering.

REFERENCES

- 1 **Kiani MT**, Higgins CA, Almquist BD. The Hair Follicle: An Underutilized Source of Cells and Materials for Regenerative Medicine. *ACS Biomater Sci Eng* 2018; **4**: 1193-1207 [PMID: 29682604 DOI: 10.1021/acsbomaterials.7b00072]
- 2 **Agabalyan NA**, Rosin NL, Rahmani W, Biernaskie J. Hair follicle dermal stem cells and skin-derived precursor cells: Exciting tools for endogenous and exogenous therapies. *Exp Dermatol* 2017; **26**: 505-509 [PMID: 28418596 DOI: 10.1111/exd.13359]
- 3 **Lako M**, Armstrong L, Cairns PM, Harris S, Hole N, Jahoda CA. Hair follicle dermal cells repopulate the mouse haematopoietic system. *J Cell Sci* 2002; **115**: 3967-3974 [PMID: 12244134 DOI: 10.1242/jcs.00060]
- 4 **Jahoda CA**, Whitehouse J, Reynolds AJ, Hole N. Hair follicle dermal cells differentiate into adipogenic and osteogenic lineages. *Exp Dermatol* 2003; **12**: 849-859 [PMID: 14714566 DOI: 10.1111/j.0906-6705.2003.00161.x]
- 5 **Hoogduijn MJ**, Gorjup E, Genever PG. Comparative characterization of hair follicle dermal stem cells and bone marrow mesenchymal stem cells. *Stem Cells Dev* 2006; **15**: 49-60 [PMID: 16522162 DOI: 10.1089/scd.2006.15.49]
- 6 **Dominici M**, Le Blanc K, Mueller I, Slaper-Cortenbach I, Marini F, Krause D, Deans R, Keating A, Prockop Dj, Horwitz E. Minimal criteria for defining multipotent mesenchymal stromal cells. The International Society for Cellular Therapy position statement. *Cytotherapy* 2006; **8**: 315-317 [PMID: 16923606 DOI: 10.1080/14653240600855905]
- 7 **Liu JY**, Peng HF, Gopinath S, Tian J, Andreadis ST. Derivation of functional smooth muscle cells from multipotent human hair follicle mesenchymal stem cells. *Tissue Eng Part A* 2010; **16**: 2553-2564 [PMID: 20236033 DOI: 10.1089/ten.TEA.2009.0833]
- 8 **Liu JY**, Peng HF, Andreadis ST. Contractile smooth muscle cells derived from hair-follicle stem cells. *Cardiovasc Res* 2008; **79**: 24-33 [PMID: 18316325 DOI: 10.1093/cvr/cvn059]
- 9 **Bai T**, Liu F, Zou F, Zhao G, Jiang Y, Liu L, Shi J, Hao D, Zhang Q, Zheng T, Zhang Y, Liu M, Li S, Qi L, Liu JY. Epidermal Growth Factor Induces Proliferation of Hair Follicle-Derived Mesenchymal Stem Cells Through Epidermal Growth Factor Receptor-Mediated Activation of ERK and AKT Signaling Pathways Associated with Upregulation of Cyclin D1 and Downregulation of p16. *Stem Cells Dev* 2017; **26**: 113-122 [PMID: 27702388 DOI: 10.1089/scd.2016.0234]
- 10 **Wang Y**, Liu J, Tan X, Li G, Gao Y, Liu X, Zhang L, Li Y. Induced pluripotent stem cells from human hair follicle mesenchymal stem cells. *Stem Cell Rev Rep* 2013; **9**: 451-460 [PMID: 23242965 DOI: 10.1007/s12015-012-9420-5]
- 11 **Jinno H**, Morozova O, Jones KL, Biernaskie JA, Paris M, Hosokawa R, Rudnicki MA, Chai Y, Rossi F, Marra MA, Miller FD. Convergent genesis of an adult neural crest-like dermal stem cell from distinct developmental origins. *Stem Cells* 2010; **28**: 2027-2040 [PMID: 20848654 DOI: 10.1002/stem.525]
- 12 **Li M**, Liu JY, Wang S, Xu H, Cui L, Lv S, Xu J, Liu S, Chi G, Li Y. Multipotent neural crest stem cell-like cells from rat vibrissa dermal papilla induce neuronal differentiation of PC12 cells. *Biomed Res Int* 2014; **2014**: 186239 [PMID: 25045659 DOI: 10.1155/2014/186239]

- 13 **Vasyliev RG**, Rodnichenko AE, Gubar OS, Zlatska AV, Gordiienko IM, Novikova SN, Zubov DO. Large-scale expansion and characterization of human adult neural crest-derived multipotent stem cells from hair follicle for regenerative medicine applications. *Exp Oncol* 2017; **39**: 171-180 [PMID: [28967641](#) DOI: [10.31768/2312-8852.2017.39\(3\):171-180](#)]
- 14 **Ma D**, Lee ST, Chua AWC. Isolation and Culture of Hair Follicle Dermal Sheath Mesenchymal Stromal Cells. *Methods Mol Biol* 2019; **1993**: 61-70 [PMID: [31148078](#) DOI: [10.1007/978-1-4939-9473-1_5](#)]
- 15 **Topouzi H**, Logan NJ, Williams G, Higgins CA. Methods for the isolation and 3D culture of dermal papilla cells from human hair follicles. *Exp Dermatol* 2017; **26**: 491-496 [PMID: [28418608](#) DOI: [10.1111/exd.13368](#)]
- 16 **Liu F**, Shi J, Zhang Y, Lian A, Han X, Zuo K, Liu M, Zheng T, Zou F, Liu X, Jin M, Mu Y, Li G, Su G, Liu J. NANOG Attenuates Hair Follicle-Derived Mesenchymal Stem Cell Senescence by Upregulating PBX1 and Activating AKT Signaling. *Oxid Med Cell Longev* 2019; **2019**: 4286213 [PMID: [31885790](#) DOI: [10.1155/2019/4286213](#)]
- 17 **Fafian-Labora JA**, Morente-López M, Arufe MC. Effect of aging on behaviour of mesenchymal stem cells. *World J Stem Cells* 2019; **11**: 337-346 [PMID: [31293716](#) DOI: [10.4252/wjsc.v11.i6.337](#)]
- 18 **Li Y**, Wu Q, Wang Y, Li L, Bu H, Bao J. Senescence of mesenchymal stem cells (Review). *Int J Mol Med* 2017; **39**: 775-782 [PMID: [28290609](#) DOI: [10.3892/ijmm.2017.2912](#)]
- 19 **Bajpai VK**, Mistriotis P, Andreadis ST. Clonal multipotency and effect of long-term in vitro expansion on differentiation potential of human hair follicle derived mesenchymal stem cells. *Stem Cell Res* 2012; **8**: 74-84 [PMID: [22099022](#) DOI: [10.1016/j.scr.2011.07.003](#)]
- 20 **Lai WT**, Krishnappa V, Phinney DG. Fibroblast growth factor 2 (Fgf2) inhibits differentiation of mesenchymal stem cells by inducing Twist2 and Spry4, blocking extracellular regulated kinase activation, and altering Fgf receptor expression levels. *Stem Cells* 2011; **29**: 1102-1111 [PMID: [21608080](#) DOI: [10.1002/stem.661](#)]
- 21 **Hyun SY**, Lee JH, Kang KJ, Jang YJ. Effect of FGF-2, TGF- β -1, and BMPs on Teno/Ligamentogenesis and Osteo/Cementogenesis of Human Periodontal Ligament Stem Cells. *Mol Cells* 2017; **40**: 550-557 [PMID: [28835018](#) DOI: [10.14348/molcells.2017.0019](#)]
- 22 **Tae JY**, Ko Y, Park JB. Evaluation of fibroblast growth factor-2 on the proliferation of osteogenic potential and protein expression of stem cell spheroids composed of stem cells derived from bone marrow. *Exp Ther Med* 2019; **18**: 326-331 [PMID: [31258669](#) DOI: [10.3892/etm.2019.7543](#)]
- 23 **Zhang X**, Wang Y, Gao Y, Liu X, Bai T, Li M, Li L, Chi G, Xu H, Liu F, Liu JY, Li Y. Maintenance of high proliferation and multipotent potential of human hair follicle-derived mesenchymal stem cells by growth factors. *Int J Mol Med* 2013; **31**: 913-921 [PMID: [23403715](#) DOI: [10.3892/ijmm.2013.1272](#)]
- 24 **Son S**, Liang MS, Lei P, Xue X, Furlani EP, Andreadis ST. Magnetofection Mediated Transient NANOG Overexpression Enhances Proliferation and Myogenic Differentiation of Human Hair Follicle Derived Mesenchymal Stem Cells. *Bioconjug Chem* 2015; **26**: 1314-1327 [PMID: [25685943](#) DOI: [10.1021/bc5005203](#)]
- 25 **Lu Y**, Qu H, Qi D, Xu W, Liu S, Jin X, Song P, Guo Y, Jia Y, Wang X, Li H, Li Y, Quan C. OCT4 maintains self-renewal and reverses senescence in human hair follicle mesenchymal stem cells through the downregulation of p21 by DNA methyltransferases. *Stem Cell Res Ther* 2019; **10**: 28 [PMID: [30646941](#) DOI: [10.1186/s13287-018-1120-x](#)]
- 26 **Li Y**, Guo G, Li L, Chen F, Bao J, Shi YJ, Bu H. Three-dimensional spheroid culture of human umbilical cord mesenchymal stem cells promotes cell yield and stemness maintenance. *Cell Tissue Res* 2015; **360**: 297-307 [PMID: [25749992](#) DOI: [10.1007/s00441-014-2055-x](#)]
- 27 **Zhao D**, Hou L, Pan M, Hua J, Wang Z, He J, Hu H. Inhibitory Effect and Mechanism of Mesenchymal Stem Cells Cultured in 3D System on Hepatoma Cells HepG2. *Appl Biochem Biotechnol* 2018; **184**: 212-227 [PMID: [28664526](#) DOI: [10.1007/s12010-017-2533-1](#)]
- 28 **Bunpetch V**, Wu H, Zhang S, Ouyang H. From "Bench to Bedside": Current Advancement on Large-Scale Production of Mesenchymal Stem Cells. *Stem Cells Dev* 2017; **26**: 1662-1673 [PMID: [28934885](#) DOI: [10.1089/scd.2017.0104](#)]
- 29 **de Soure AM**, Fernandes-Platzgummer A, da Silva CL, Cabral JM. Scalable microcarrier-based manufacturing of mesenchymal stem/stromal cells. *J Biotechnol* 2016; **236**: 88-109 [PMID: [27527397](#) DOI: [10.1016/j.jbiotec.2016.08.007](#)]
- 30 **Rafiq QA**, Coopman K, Nienow AW, Hewitt CJ. Systematic microcarrier screening and agitated culture conditions improves human mesenchymal stem cell yield in bioreactors. *Biotechnol J* 2016; **11**: 473-486 [PMID: [26632496](#) DOI: [10.1002/biot.201400862](#)]
- 31 **Li P**, Liu F, Wu C, Jiang W, Zhao G, Liu L, Bai T, Wang L, Jiang Y, Guo L, Qi X, Kou J, Fan R, Hao D, Lan S, Li Y, Liu JY. Feasibility of human hair follicle-derived mesenchymal stem cells/CultiSpher®-G constructs in regenerative medicine. *Cell Tissue Res* 2015; **362**: 69-86 [PMID: [25948482](#) DOI: [10.1007/s00441-015-2182-z](#)]
- 32 **Petrenko Y**, Syková E, Kubinová Š. The therapeutic potential of three-dimensional multipotent mesenchymal stromal cell spheroids. *Stem Cell Res Ther* 2017; **8**: 94 [PMID: [28446248](#) DOI: [10.1186/s13287-017-0558-6](#)]
- 33 **Bartosh TJ**, Ylöstalo JH, Mohammadipour A, Bazhanov N, Coble K, Claypool K, Lee RH, Choi H, Prockop DJ. Aggregation of human mesenchymal stromal cells (MSCs) into 3D spheroids enhances their antiinflammatory properties. *Proc Natl Acad Sci USA* 2010; **107**: 13724-13729 [PMID: [20643923](#) DOI: [10.1073/pnas.1008117107](#)]
- 34 **Xu Y**, Shi T, Xu A, Zhang L. 3D spheroid culture enhances survival and therapeutic capacities of MSCs injected into ischemic kidney. *J Cell Mol Med* 2016; **20**: 1203-1213 [PMID: [26914637](#) DOI: [10.1111/jcmm.12651](#)]
- 35 **Zhu Y**, Yi Y. [Research progress and clinical prospect of three-dimensional spheroid culture of mesenchymal stem cells]. *Zhongguo Xiu Fu Chong Jian Wai Ke Za Zhi* 2017; **31**: 497-503 [PMID: [29798618](#) DOI: [10.7507/1002-1892.201612056](#)]
- 36 **Higgins CA**, Chen JC, Cerise JE, Jahoda CA, Christiano AM. Microenvironmental reprogramming by three-dimensional culture enables dermal papilla cells to induce de novo human hair-follicle growth. *Proc Natl Acad Sci USA* 2013; **110**: 19679-19688 [PMID: [24145441](#) DOI: [10.1073/pnas.1309970110](#)]
- 37 **Shi JH**, Zuo KY, Zhang YY, Wang B, Han X, Lian AB, Liu JY. NANOG Alleviates the Damage of Human Hair Follicle Mesenchymal Stem Cells Caused by H2O2 through Activation of AKT Pathway. *Biomed Environ Sci* 2019; **32**: 272-280 [PMID: [31217063](#) DOI: [10.3967/bes2019.037](#)]
- 38 **Bennett MR**, Sinha S, Owens GK. Vascular Smooth Muscle Cells in Atherosclerosis. *Circ Res* 2016; **118**: 692-702 [PMID: [26892967](#) DOI: [10.1161/CIRCRESAHA.115.306361](#)]

- 39 **Xie C**, Li Y, Gao J, Wang Y. Esculetin regulates the phenotype switching of airway smooth muscle cells. *Phytother Res* 2019; **33**: 3008-3015 [PMID: [31435973](#) DOI: [10.1002/ptr.6483](#)]
- 40 **Cui H**, Zhu W, Huang Y, Liu C, Yu ZX, Nowicki M, Miao S, Cheng Y, Zhou X, Lee SJ, Zhou Y, Wang S, Mohiuddin M, Horvath K, Zhang LG. In vitro and in vivo evaluation of 3D bioprinted small-diameter vasculature with smooth muscle and endothelium. *Biofabrication* 2019; **12**: 015004 [PMID: [31470437](#) DOI: [10.1088/1758-5090/ab402c](#)]
- 41 **Andrique L**, Recher G, Alessandri K, Pujol N, Feyeux M, Bon P, Cognet L, Nasso P, Bikfalvi A. A model of guided cell self-organization for rapid and spontaneous formation of functional vessels. *Sci Adv* 2019; **5**: eaau6562 [PMID: [31206014](#) DOI: [10.1126/sciadv.aau6562](#)]
- 42 **Xu ZC**, Zhang Q, Li H. Human hair follicle stem cell differentiation into contractile smooth muscle cells is induced by transforming growth factor- β 1 and platelet-derived growth factor BB. *Mol Med Rep* 2013; **8**: 1715-1721 [PMID: [24084832](#) DOI: [10.3892/mmr.2013.1707](#)]
- 43 **Gao Y**, Liu F, Zhang L, Su X, Liu JY, Li Y. Acellular blood vessels combined human hair follicle mesenchymal stem cells for engineering of functional arterial grafts. *Ann Biomed Eng* 2014; **42**: 2177-2189 [PMID: [25023659](#) DOI: [10.1007/s10439-014-1061-1](#)]
- 44 **Morgan BA**. The dermal papilla: an instructive niche for epithelial stem and progenitor cells in development and regeneration of the hair follicle. *Cold Spring Harb Perspect Med* 2014; **4**: a015180 [PMID: [24985131](#) DOI: [10.1101/cshperspect.a015180](#)]
- 45 **Gentile P**, Scioli MG, Bielli A, De Angelis B, De Sio C, De Fazio D, Ceccarelli G, Trivisonno A, Orlandi A, Cervelli V, Garcovich S. Platelet-Rich Plasma and Micrografts Enriched with Autologous Human Follicle Mesenchymal Stem Cells Improve Hair Re-Growth in Androgenetic Alopecia. *Biomolecular Pathway Analysis and Clinical Evaluation. Biomedicine* 2019; **7**: 27 [PMID: [30965624](#) DOI: [10.3390/biomedicines7020027](#)]
- 46 **Gentile P**, Scioli MG, Bielli A, Orlandi A, Cervelli V. Stem cells from human hair follicles: first mechanical isolation for immediate autologous clinical use in androgenetic alopecia and hair loss. *Stem Cell Investig* 2017; **4**: 58 [PMID: [28725654](#) DOI: [10.21037/sci.2017.06.04](#)]
- 47 **Toyoshima KE**, Asakawa K, Ishibashi N, Toki H, Ogawa M, Hasegawa T, Irie T, Tachikawa T, Sato A, Takeda A, Tsuji T. Fully functional hair follicle regeneration through the rearrangement of stem cells and their niches. *Nat Commun* 2012; **3**: 784 [PMID: [22510689](#) DOI: [10.1038/ncomms1784](#)]
- 48 **Asakawa K**, Toyoshima KE, Tsuji T. Functional Hair Follicle Regeneration by the Rearrangement of Stem Cells. *Methods Mol Biol* 2017; **1597**: 117-134 [PMID: [28361314](#) DOI: [10.1007/978-1-4939-6949-4_9](#)]
- 49 **Liu Z**, Lu SJ, Lu Y, Tan X, Zhang X, Yang M, Zhang F, Li Y, Quan C. Transdifferentiation of Human Hair Follicle Mesenchymal Stem Cells into Red Blood Cells by OCT4. *Stem Cells Int* 2015; **2015**: 389628 [PMID: [25755671](#) DOI: [10.1155/2015/389628](#)]
- 50 **Sun S**, Peng Y, Liu J. Research advances in erythrocyte regeneration sources and methods *in vitro*. *Cell Regen (Lond)* 2018; **7**: 45-49 [PMID: [30671230](#) DOI: [10.1016/j.cr.2018.10.001](#)]
- 51 **Lee E**, Sivalingam J, Lim ZR, Chia G, Shi LG, Roberts M, Loh YH, Reuveny S, Oh SK. Review: In vitro generation of red blood cells for transfusion medicine: Progress, prospects and challenges. *Biotechnol Adv* 2018; **36**: 2118-2128 [PMID: [30273713](#) DOI: [10.1016/j.biotechadv.2018.09.006](#)]
- 52 **Bindhya S**, Sidhanth C, Shabna A, Krishnapriya S, Garg M, Ganesan TS. Induced pluripotent stem cells: A new strategy to model human cancer. *Int J Biochem Cell Biol* 2019; **107**: 62-68 [PMID: [30557622](#) DOI: [10.1016/j.biocel.2018.12.008](#)]
- 53 **Rowe RG**, Daley GQ. Induced pluripotent stem cells in disease modelling and drug discovery. *Nat Rev Genet* 2019; **20**: 377-388 [PMID: [30737492](#) DOI: [10.1038/s41576-019-0100-z](#)]
- 54 **Bajpai VK**, Mistriotis P, Loh YH, Daley GQ, Andreadis ST. Functional vascular smooth muscle cells derived from human induced pluripotent stem cells via mesenchymal stem cell intermediates. *Cardiovasc Res* 2012; **96**: 391-400 [PMID: [22941255](#) DOI: [10.1093/cvr/cvs253](#)]
- 55 **Shi X**, Lv S, He X, Liu X, Sun M, Li M, Chi G, Li Y. Differentiation of hepatocytes from induced pluripotent stem cells derived from human hair follicle mesenchymal stem cells. *Cell Tissue Res* 2016; **366**: 89-99 [PMID: [27053247](#) DOI: [10.1007/s00441-016-2399-5](#)]
- 56 **Jiang Y**, Liu F, Zou F, Zhang Y, Wang B, Zhang Y, Lian A, Han X, Liu Z, Liu X, Jin M, Wang D, Li G, Liu J. PBX homeobox 1 enhances hair follicle mesenchymal stem cell proliferation and reprogramming through activation of the AKT/glycogen synthase kinase signaling pathway and suppression of apoptosis. *Stem Cell Res Ther* 2019; **10**: 268 [PMID: [31443676](#) DOI: [10.1186/s13287-019-1382-y](#)]
- 57 **Zhou D**, Cheng H, Liu J, Zhang L. Establishment of human hair follicle mesenchymal stem cells with overexpressed human hepatocyte growth factor. *Iran J Basic Med Sci* 2017; **20**: 662-675 [PMID: [28702144](#) DOI: [10.22038/IJBMS.2017.8834](#)]
- 58 **Wu C**, Liu F, Li P, Zhao G, Lan S, Jiang W, Meng X, Tian L, Li G, Li Y, Liu JY. Engineered hair follicle mesenchymal stem cells overexpressing controlled-release insulin reverse hyperglycemia in mice with type 1 diabetes. *Cell Transplant* 2015; **24**: 891-907 [PMID: [24835482](#) DOI: [10.3727/096368914X681919](#)]



Published by Baishideng Publishing Group Inc
7041 Koll Center Parkway, Suite 160, Pleasanton, CA 94566, USA
Telephone: +1-925-3991568
E-mail: bpgoffice@wjgnet.com
Help Desk: <https://www.f6publishing.com/helpdesk>
<https://www.wjgnet.com>

