

Name of Journal: *World Journal of Diabetes*

Manuscript NO: 55391

Manuscript Type: MINIREVIEWS

Interstitial lung disease and diabetes

Rajasurya V *et al.* ILD and diabetes

Venkat Rajasurya, Kulothungan Gunasekaran, Salim Surani

Abstract

Diabetes mellitus (DM) is a chronic metabolic disease and its prevalence has been steadily increasing all over the world. DM and its associated micro and macrovascular complications result in significant morbidity and mortality. The microvascular

Match Overview

| | | |
|---|---|----|
| 1 | Internet 61 words crawled on 26-May-2020 www.karger.com | 2% |
| 2 | Internet 43 words crawled on 19-May-2015 journal.publications.chestnet.org | 2% |
| 3 | Internet 24 words crawled on 18-Apr-2014 www.ncbi.nlm.nih.gov | 1% |
| 4 | Internet 22 words crawled on 13-May-2020 worldwidescience.org | 1% |



ALL

IMAGES

VIDEOS

1,410,000 Results

Any time ▾

Lung Health Institute | Relationship Between Diabetes and ...

<https://lunginstitute.com/blog/relationship-between-diabetes-and-lung-disease> ▾

Apr 04, 2015 · This can have a significant impact on blood sugar levels and the overall quality of an individual's health. In fact, several lung diseases can affect diabetes and vice versa. Diabetes can contribute to the development of pneumonia, tuberculosis and chronic obstructive pulmonary disease (COPD). Pneumonia is caused by an infection and consequential inflammation which puts pressure ...

High prevalence of restrictive lung disease in people with ...

<https://www.sciencedaily.com/releases/2018/07/180711105728.htm> ▾

Jul 11, 2018 · Acute and chronic lung diseases are usually the main causes. Studies show that many people with interstitial lung disease (IDL) also suffer from type 2 diabetes. But do patients with type 2...

Interstitial lung disease - Symptoms and causes - Mayo Clinic

<https://www.mayoclinic.org/diseases-conditions/> ▾

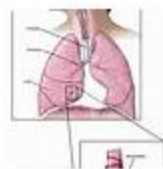
Overview

Symptoms

Causes

Risk Factors

Complications



Interstitial (in-tur-STISH-ul) lung disease describes a large group of disorders, most of which cause progressive scarring of lung tissue. The scarring associated with interstitial lung disease eventually affects your ability to breathe and get enough oxygen into your bloodstream. Interstitial lung disease can be caused by long-term exposure to hazardous materials, such as asbestos. Some types of autoimmune diseases, such as rheumatoid ...

[See more on mayoclinic.org](https://www.mayoclinic.org)

Breathlessness and Restrictive Lung Disease: An Important ...

<https://www.ncbi.nlm.nih.gov/pubmed/29874679>

(11)Center for Interstitial and Rare Lung Diseases, Pneumology, Thoraxklinik, University of Heidelberg, Heidelberg, Germany. (12)Joint-IDC, Institute for Diabetes and Cancer at Helmholtz Zentrum Munich and University of Heidelberg, Heidelberg, Germany. BACKGROUND: Diabetes mellitus is a significant comorbidity of interstitial lung

Cited by: 5

Author: Stefan Kopf, Jan B. Groener, Zoltan Kend...

Publish Year: 2018

[ALL](#) [IMAGES](#) [VIDEOS](#) [MAPS](#) [NEWS](#) [SHOPPING](#)

1,480,000 Results Any time ▾

[Lung Health Institute | Relationship Between Diabetes and ...](#)

<https://lunginstitute.com/blog/relationship-between-diabetes-and-lung-disease>

Apr 04, 2015 · This can have a significant impact on blood sugar levels and the overall quality of an individual's health. In fact, several **lung diseases can affect diabetes and vice versa**. Diabetes can contribute to the development of pneumonia, tuberculosis and chronic obstructive pulmonary disease (COPD). Pneumonia is caused by an infection and consequential inflammation which puts pressure ...

[High prevalence of restrictive lung disease in people with ...](#)

<https://www.sciencedaily.com/releases/2018/07/180711105728.htm>

Jul 11, 2018 · **Acute and chronic lung diseases** are usually the main causes. Studies show that many people with **interstitial lung disease (IDL)** also suffer from type 2 diabetes. But do patients with type 2...

[Interstitial lung disease - Symptoms and causes - Mayo Clinic](#)

<https://www.mayoclinic.org/diseases-conditions/...>

Overview

Symptoms

Causes

Risk Factors

Complications



Interstitial (in-tur-STISH-ul) lung disease describes a large group of disorders, most of which cause progressive scarring of lung tissue. The scarring associated with interstitial lung disease eventually affects your ability to breathe and get enough oxygen into your bloodstream. Interstitial lung disease can be caused by long-term exposure to hazardous materials, such as asbestos. Some types of autoimmune diseases, such as rheumatoid...

[See more on mayoclinic.org](#)

[Breathlessness and Restrictive Lung Disease: An Important ...](#)

<https://www.ncbi.nlm.nih.gov/pubmed/29874679>

(11)Center for Interstitial and Rare Lung Diseases, Pneumology, Thoraxklinik, University of Heidelberg, Heidelberg, Germany. (12)Joint-IDC, Institute for Diabetes and Cancer at Helmholtz Zentrum Munich and University of Heidelberg, Heidelberg, Germany. BACKGROUND: **Diabetes mellitus** is a significant comorbidity of interstitial lung

Interstitial Lung Disease

Medical Condition

A condition where the lung tissue is scarred (damaged)



- Shortness of breath
- Dry cough
- Loss of weight
- Fatigue

A group of lung conditions that causes scarring of lung tissues.

Rare (Fewer than 200,000 cases per year in US)

Usually preventable by vaccine

Requires lab test or imaging

Treatments can help manage condition, no known cure

Can last several years or be lifelong

The causes include long-term exposure to toxins, infection, some medication and disease conditions. Dyspnea and dry cough are the main symptoms. Treatment depends on the cause and type, and may include, oxygen therapy, corticosteroids and lung transplant.

Symptoms