

World Journal of *Clinical Cases*

World J Clin Cases 2020 December 6; 8(23): 5835-6212



Contents

Semimonthly Volume 8 Number 23 December 6, 2020

EDITORIAL

- 5835** Understanding the immunopathogenesis of COVID-19: Its implication for therapeutic strategy
Shimizu Y

OPINION REVIEW

- 5844** What is the gut feeling telling us about physical activity in colorectal carcinogenesis?
Cigrovski Berkovic M, Cigrovski V, Bilic-Curcic I, Mrzljak A

REVIEW

- 5852** Latest developments in chronic intestinal pseudo-obstruction
Zhu CZ, Zhao HW, Lin HW, Wang F, Li YX

ORIGINAL ARTICLE

Case Control Study

- 5866** Correlation between ductus venosus spectrum and right ventricular diastolic function in isolated single-umbilical-artery foetus and normal foetus in third trimester
Li TG, Nie F, Xu XY

Retrospective Cohort Study

- 5876** Clinical efficacy of integral theory-guided laparoscopic integral pelvic floor/ligament repair in the treatment of internal rectal prolapse in females
Yang Y, Cao YL, Zhang YY, Shi SS, Yang WW, Zhao N, Lyu BB, Zhang WL, Wei D

Retrospective Study

- 5887** Treatment of Kümmell's disease with sequential infusion of bone cement: A retrospective study
Zhang X, Li YC, Liu HP, Zhou B, Yang HL
- 5894** Application value analysis of magnetic resonance imaging and computed tomography in the diagnosis of intracranial infection after craniocerebral surgery
Gu L, Yang XL, Yin HK, Lu ZH, Geng CJ
- 5902** Focal intrahepatic strictures: A proposal classification based on diagnosis-treatment experience and systemic review
Zhou D, Zhang B, Zhang XY, Guan WB, Wang JD, Ma F
- 5918** Preliminary analysis of the effect of vagus nerve stimulation in the treatment of children with intractable epilepsy
Fang T, Xie ZH, Liu TH, Deng J, Chen S, Chen F, Zheng LL

- 5926** Scoring system for poor limb perfusion after limb fracture in children
Zhu T, Shi Y, Yu Q, Zhao YJ, Dai W, Chen Y, Zhang SS
- 5935** Overexpression of CD155 is associated with PD-1 and PD-L1 expression on immune cells, rather than tumor cells in the breast cancer microenvironment
Wang RB, Li YC, Zhou Q, Lv SZ, Yuan KY, Wu JP, Zhao YJ, Song QK, Zhu B
- 5944** Application of computer tomography-based 3D reconstruction technique in hernia repair surgery
Wang F, Yang XF
- 5952** Effect of methylprednisolone in severe and critical COVID-19: Analysis of 102 cases
Zhu HM, Li Y, Li BY, Yang S, Peng D, Yang X, Sun XL, Zhang M

Observational Study

- 5962** Genetic diagnosis history and osteoarticular phenotype of a non-transfusion secondary hemochromatosis
Ruan DD, Gan YM, Lu T, Yang X, Zhu YB, Yu QH, Liao LS, Lin N, Qian X, Luo JW, Tang FQ
- 5976** Abdominal ventral rectopexy with colectomy for obstructed defecation syndrome: An alternative option for selected patients
Wang L, Li CX, Tian Y, Ye JW, Li F, Tong WD
- 5988** Surgical treatment of multiple magnet ingestion in children: A single-center study
Cai DT, Shu Q, Zhang SH, Liu J, Gao ZG

Randomized Clinical Trial

- 5999** Efficacy and economic benefits of a modified Valsalva maneuver in patients with paroxysmal supraventricular tachycardia
Wang W, Jiang TF, Han WZ, Jin L, Zhao XJ, Guo Y

CASE REPORT

- 6009** Duodenal giant stromal tumor combined with ectopic varicose hemorrhage: A case report
Li DH, Liu XY, Xu LB
- 6016** Healthy neonate born to a SARS-CoV-2 infected woman: A case report and review of literature
Wang RY, Zheng KQ, Xu BZ, Zhang W, Si JG, Xu CY, Chen H, Xu ZY, Wu XM
- 6026** Pleomorphic adenoma of the trachea: A case report and review of the literature
Liao QN, Fang ZK, Chen SB, Fan HZ, Chen LC, Wu XP, He X, Yu HP
- 6036** Neoadjuvant targeted therapy for apocrine carcinoma of the breast: A case report
Yang P, Peng SJ, Dong YM, Yang L, Yang ZY, Hu XE, Bao GQ
- 6043** Huge encrusted ureteral stent forgotten for over 25 years: A case report
Kim DS, Lee SH

- 6048** Roxadustat for treatment of erythropoietin-hyporesponsive anemia in a hemodialysis patient: A case report
Yu WH, Li XJ, Yuan F
- 6056** Suspected SARS-CoV-2 infection with fever and coronary heart disease: A case report
Gong JR, Yang JS, He YW, Yu KH, Liu J, Sun RL
- 6064** Interpersonal psychotherapy-based psychological intervention for patient suffering from COVID-19: A case report
Hu CC, Huang JW, Wei N, Hu SH, Hu JB, Li SG, Lai JB, Huang ML, Wang DD, Chen JK, Zhou XY, Wang Z, Xu Y
- 6071** Optical coherence tomography angiography characteristics in Waldenström macroglobulinemia retinopathy: A case report
Li J, Zhang R, Gu F, Liu ZL, Sun P
- 6080** Forty-nine years old woman co-infected with SARS-CoV-2 and Mycoplasma: A case report
Gao ZA, Gao LB, Chen XJ, Xu Y
- 6086** Endoscopic fenestration in the diagnosis and treatment of delayed anastomotic submucosal abscess: A case report and review of literature
Zhang BZ, Wang YD, Liao Y, Zhang JJ, Wu YF, Sun XL, Sun SY, Guo JT
- 6095** Small-cell neuroendocrine carcinoma of the rectum — a rare tumor type with poor prognosis: A case report and review of literature
Chen ZZ, Huang W, Wei ZQ
- 6103** Laparoscopic left lateral sectionectomy in pediatric living donor liver transplantation by single-port approach: A case report
Li H, Wei L, Zeng Z, Qu W, Zhu ZJ
- 6110** Malignant meningioma with jugular vein invasion and carotid artery extension: A case report and review of the literature
Chen HY, Zhao F, Qin JY, Lin HM, Su JP
- 6122** Neuronal intranuclear inclusion disease mimicking acute cerebellitis: A case report
Guo JJ, Wang ZY, Wang M, Jiang ZZ, Yu XF
- 6130** Hemophagocytic lymphohistiocytosis caused by STAT1 gain-of-function mutation is not driven by interferon- γ : A case report
Liu N, Zhao FY, Xu XJ
- 6136** Single door laminoplasty plus posterior fusion for posterior atlantoaxial dislocation with congenital malformation: A case report and review of literature
Zhu Y, Wu XX, Jiang AQ, Li XF, Yang HL, Jiang WM
- 6144** Occipital nodular fasciitis easily misdiagnosed as neoplastic lesions: A rare case report
Wang T, Tang GC, Yang H, Fan JK

- 6150** Postoperative secondary aggravation of obstructive sleep apnea-hypopnea syndrome and hypoxemia with bilateral carotid body tumor: A case report
Yang X, He XG, Jiang DH, Feng C, Nie R
- 6158** Uncontrolled central hyperthermia by standard dose of bromocriptine: A case report
Ge X, Luan X
- 6164** Acute celiac artery occlusion secondary to blunt trauma: Two case reports
Li H, Zhao Y, Xu YA, Li T, Yang J, Hu P, Ai T
- 6172** Multiple ectopic goiter in the retroperitoneum, abdominal wall, liver, and diaphragm: A case report and review of literature
Qin LH, He FY, Liao JY
- 6181** Symptomatic and optimal supportive care of critical COVID-19: A case report and literature review
Pang QL, He WC, Li JX, Huang L
- 6190** Primary breast cancer patient with poliomyelitis: A case report
Wang XM, Cong YZ, Qiao GD, Zhang S, Wang LJ
- 6197** Discontinuous polyostotic fibrous dysplasia with multiple systemic disorders and unique genetic mutations: A case report
Lin T, Li XY, Zou CY, Liu WW, Lin JF, Zhang XX, Zhao SQ, Xie XB, Huang G, Yin JQ, Shen JN
- 6206** Novel triple therapy for hemorrhagic ascites caused by endometriosis: A case report
Han X, Zhang ST

ABOUT COVER

Peer-reviewer of *World Journal of Clinical Cases*, Dr. Mohamad Adam Bujang is a Research Officer at the Institute for Clinical Research, Ministry of Health, Malaysia. After receiving his Bachelor's degree in Statistics from MARA University of Technology in 2004, Dr. Adam undertook his postgraduate study at the same university, receiving his Master's degree (MBA) in 2008 and his PhD in Information Technology and Quantitative Sciences in 2017. Currently, he works as a biostatistician and researcher in the Clinical Research Centre, Sarawak General Hospital. His ongoing research interests involve such research methodologies as sampling techniques, sample size planning, and statistical analyses. Since 2016, he has served as an active member of the Malaysia Institute of Statistics and the Association of Clinical Registries Malaysia. (L-Editor: Filipodia)

AIMS AND SCOPE

The primary aim of *World Journal of Clinical Cases* (*WJCC*, *World J Clin Cases*) is to provide scholars and readers from various fields of clinical medicine with a platform to publish high-quality clinical research articles and communicate their research findings online.

WJCC mainly publishes articles reporting research results and findings obtained in the field of clinical medicine and covering a wide range of topics, including case control studies, retrospective cohort studies, retrospective studies, clinical trials studies, observational studies, prospective studies, randomized controlled trials, randomized clinical trials, systematic reviews, meta-analysis, and case reports.

INDEXING/ABSTRACTING

The *WJCC* is now indexed in Science Citation Index Expanded (also known as SciSearch®), Journal Citation Reports/Science Edition, PubMed, and PubMed Central. The 2020 Edition of Journal Citation Reports® cites the 2019 impact factor (IF) for *WJCC* as 1.013; IF without journal self cites: 0.991; Ranking: 120 among 165 journals in medicine, general and internal; and Quartile category: Q3.

RESPONSIBLE EDITORS FOR THIS ISSUE

Production Editor: Yan-Xia Xing; Production Department Director: Yun-Xiaojuan Wu; Editorial Office Director: Jin-Lai Wang.

NAME OF JOURNAL

World Journal of Clinical Cases

ISSN

ISSN 2307-8960 (online)

LAUNCH DATE

April 16, 2013

FREQUENCY

Semimonthly

EDITORS-IN-CHIEF

Dennis A Bloomfield, Sandro Vento, Bao-gan Peng

EDITORIAL BOARD MEMBERS

<https://www.wjgnet.com/2307-8960/editorialboard.htm>

PUBLICATION DATE

December 6, 2020

COPYRIGHT

© 2020 Baishideng Publishing Group Inc

INSTRUCTIONS TO AUTHORS

<https://www.wjgnet.com/bpg/gerinfo/204>

GUIDELINES FOR ETHICS DOCUMENTS

<https://www.wjgnet.com/bpg/GerInfo/287>

GUIDELINES FOR NON-NATIVE SPEAKERS OF ENGLISH

<https://www.wjgnet.com/bpg/gerinfo/240>

PUBLICATION ETHICS

<https://www.wjgnet.com/bpg/GerInfo/288>

PUBLICATION MISCONDUCT

<https://www.wjgnet.com/bpg/gerinfo/208>

ARTICLE PROCESSING CHARGE

<https://www.wjgnet.com/bpg/gerinfo/242>

STEPS FOR SUBMITTING MANUSCRIPTS

<https://www.wjgnet.com/bpg/GerInfo/239>

ONLINE SUBMISSION

<https://www.f6publishing.com>

Retrospective Study

Application value analysis of magnetic resonance imaging and computed tomography in the diagnosis of intracranial infection after craniocerebral surgery

Lan Gu, Xiao-Liang Yang, Hui-Kang Yin, Ze-Hua Lu, Cheng-Jun Geng

ORCID number: Lan Gu 0000-0001-8823-6920; Xiao-Liang Yang 0000-0002-8855-028X; Hui-Kang Yin 0000-0002-7706-8877; Ze-Hua Lu 0000-0001-5880-7120; Cheng-Jun Geng 0000-0002-8736-9956.

Author contributions: Gu L and Yang XL contributed equally to this article and should be considered as co-first authors; Gu L and Yang XL designed this retrospective study; Yin HK wrote the paper; Lu ZH was responsible for collating the data.

Institutional review board

statement: The study was reviewed and approved by The 904th Hospital of the Joint Logistics Support Force of the Chinese PLA General Hospital Institutional Review Board (Approval No. 2016-03-01).

Informed consent statement:

Patients were not required to give informed consent to the study because the analysis used anonymous clinical data.

Conflict-of-interest statement: Lan Gu has received fees for serving as a speaker.

Data sharing statement: Technical appendix, statistical code, and

Lan Gu, Department of Radiology, Wuxi Fifth People's Hospital, Wuxi 214000, Jiangsu Province, China

Xiao-Liang Yang, Hui-Kang Yin, Ze-Hua Lu, Cheng-Jun Geng, Department of Medical Imaging, Wuxi Medical College of Anhui Medical University, 904th Hospital of Joint Logistic Support Force of PLA, Wuxi 214044, Jiangsu Province, China

Corresponding author: Cheng-Jun Geng, MHSc, Associate Chief Physician, Department of Medical Imaging, Wuxi Medical College of Anhui Medical University, 904th Hospital of Joint Logistic Support Force of PLA, No. 101 Xingyuan North Road, Wuxi 214044, Jiangsu Province, China. hfgcj@yeah.net

Abstract**BACKGROUND**

Intracranial infection is a common clinical disease. Computed tomography (CT) and magnetic resonance imaging (MRI) have certain sensitivity and have good diagnostic efficacy.

AIM

To study the application value of MRI and CT in the diagnosis of intracranial infection after craniocerebral surgery.

METHODS

We selected 82 patients who underwent craniocerebral surgery (including 40 patients with intracranial infection and 42 patients without infection) during the period from April 2016 to June 2019 in our hospital. All 82 patients received CT and MRI examinations, and their clinical data were reviewed. A retrospective analysis was performed, and the coincidence rate of positive diagnosis and the overall diagnosis coincidence rate of different pathogenic infection types were measured with the two examination methods. The diagnostic sensitivity and specificity as well as the positive and negative predictive values of the two examination methods were compared.

RESULTS

For all types of pathogenic infections (*Staphylococcus aureus*, *Staphylococcus hemolyticus*, *Staphylococcus epidermidis*, and others), MRI scans had higher positive

dataset available from the corresponding author at 1092764537@qq.com. Participants gave informed consent for data sharing.

Open-Access: This article is an open-access article that was selected by an in-house editor and fully peer-reviewed by external reviewers. It is distributed in accordance with the Creative Commons Attribution NonCommercial (CC BY-NC 4.0) license, which permits others to distribute, remix, adapt, build upon this work non-commercially, and license their derivative works on different terms, provided the original work is properly cited and the use is non-commercial. See: <http://creativecommons.org/licenses/by-nc/4.0/>

Manuscript source: Unsolicited manuscript

Specialty type: Radiology, nuclear medicine and medical imaging

Country/Territory of origin: China

Peer-review report's scientific quality classification

Grade A (Excellent): 0
Grade B (Very good): B, B
Grade C (Good): C
Grade D (Fair): 0
Grade E (Poor): 0

Received: June 16, 2020

Peer-review started: June 16, 2020

First decision: July 25, 2020

Revised: August 11, 2020

Accepted: October 19, 2020

Article in press: October 19, 2020

Published online: December 6, 2020

P-Reviewer: Hashash JG, Kato S, Kim ES

S-Editor: Gong ZM

L-Editor: Webster JR

P-Editor: Zhang YL



diagnostic coincidence rates than CT scans; the overall diagnostic coincidence rate, sensitivity, specificity, positive predictive value, and negative predictive values were significantly higher with MRI examinations than with CT examinations, and the differences were statistically significant ($P < 0.05$).

CONCLUSION

MRI examination can accurately diagnose intracranial infection after clinical craniocerebral surgery. Compared with CT, MRI had higher diagnostic efficiency. The diagnostic sensitivity and specificity, the diagnostic coincidence rate, and the positive and negative predictive values were significantly higher with MRI than with conventional CT, which can be actively promoted.

Key Words: Computed tomography; Magnetic resonance imaging; Craniocerebral surgery; Diagnosis of intracranial infection; Diagnostic efficacy; Comparative study

©The Author(s) 2020. Published by Baishideng Publishing Group Inc. All rights reserved.

Core Tip: In this article, the diagnostic value of magnetic resonance imaging and computed tomography for intracranial infection after craniocerebral surgery was assessed.

Citation: Gu L, Yang XL, Yin HK, Lu ZH, Geng CJ. Application value analysis of magnetic resonance imaging and computed tomography in the diagnosis of intracranial infection after craniocerebral surgery. *World J Clin Cases* 2020; 8(23): 5894-5901

URL: <https://www.wjgnet.com/2307-8960/full/v8/i23/5894.htm>

DOI: <https://dx.doi.org/10.12998/wjcc.v8.i23.5894>

INTRODUCTION

Intracranial infection is a common clinical disease and a common complication after craniocerebral surgery^[1]. The typical manifestation of patients with intracranial infection is increased intracranial pressure, and various symptoms and signs including disturbance of consciousness, and nerve damage also occur^[2-4]. Clinical research suggests that craniocerebral infection will cause irreversible damage to patients' brain tissue. Failure to provide effective and timely treatment may cause memory loss, seizures, *etc.*, and in severe cases will lead to hemiplegia and even death^[5].

Clinical craniocerebral surgery is mainly performed for the treatment of intracranial tumors, intracranial injuries and other diseases. Such patients are prone to intracranial infection after surgical treatment, and relevant examinations should be performed in a timely manner for early effective treatment^[6,7]. Commonly used clinical diagnostic tools for intracranial infection include bacteriological examinations, cerebrospinal fluid examinations^[8,9], and imaging laboratory examinations, including CT, MRI and other imaging techniques. In recent years, there have been advances in clinical head CT and MRI examinations of the temporal lobe to visualize focal hemorrhagic brain tissue. The softening foci have certain sensitivity and have good diagnostic efficacy^[10].

Some scholars believe that diagnosis should include more conventional CT examinations, MRI examinations of additional infected lesions with brain tissue sensitivity, a higher performance of the overall diagnosis, and clinical priority for inspection after brain surgery in patients with intracranial infection^[11]. The present study was conducted to verify the diagnostic value of MRI and CT for intracranial infection after craniocerebral surgery.

MATERIALS AND METHODS

General information

Data from a total of 40 patients with infection after craniocerebral surgery and 42 patients without infection after craniocerebral surgery admitted to our hospital from

August 2017 to October 2019 were collected. The clinical data of these 82 patients were retrospectively analyzed. The inclusion criteria were as follows: indications for surgery related to brain surgery; all patients were given anti-infective treatment in accordance with standard procedures; clinical data were complete; after being informed of the nature of this study, patients were voluntarily included; and the ethics committee of our hospital was informed and approved the study. The exclusion criteria were as follows: Poor compliance and incomplete imaging data; and the multi-item analysis was not in full compliance with the inclusion criteria. Of the 82 patients, 43 were male, and 39 were female; age ranged from 26-56 years, with an average age of 41.52 ± 3.64 years. Forty patients with intracranial infections were diagnosed from cerebrospinal fluid *via* lumbar puncture, and 16 cases of *Staphylococcus aureus* infection, 8 cases of *Staphylococcus hemolyticus* infection, 9 cases of *Staphylococcus epidermidis* infection, and 7 cases of other types of infection were confirmed.

Review of examination methods

Patients underwent a secondary MRI and CT examination 7 d after admission and 7 d before discharge. CT examination was performed with a Siemens raw 16-slice spiral CT system, with an axial scanning routine, a controlled layer thickness of 10 mm, and a remaining layer pitch of 10 mm. MRI examination was performed with a Siemens MAGNETOM Skyra3.0T superconducting MRI, and the data parameters used have been reported previously: Rectangular array parameter of 256×384 , auxiliary sagittal and coronal T1WI, FLAIR (TE 72 ms, TR 6000 ms), TSE T2WI (TR 4600 ms, TE 103 ms), and DWI (TR 6202 ms, TE 92 ms), seT1WI (TR 500 ms, TE 12 ms), and the brain was scanned 2 to 3 times at 1-mm intervals. After completing the routine examinations, all patients underwent enhanced scans, and after obtaining the image data, these were handed over to the senior attending doctor of our hospital for diagnosis.

Observation indicators

Taking lumbar puncture for cerebrospinal fluid examination as the gold standard, statistics of the positive diagnosis conformity and overall diagnosis conformity were retrieved for various types of infections (*Staphylococcus aureus*, *Staphylococcus hemolyticus*, *Staphylococcus epidermidis*, and others); the diagnostic coincidence rate = (total number of cases-misdiagnosis number of cases)/total number of cases $\times 100\%$.

The sensitivity, specificity, and positive and negative predictive values of the two examination methods were calculated as follows: Sensitivity = true positive/(true positive + false negative) $\times 100\%$, specificity = true negative/(true negative + false positive) $\times 100\%$, positive predictive value = true positive/(true positive + false positive) $\times 100\%$, and negative predictive value = true negative/(true negative + false negative) $\times 100\%$.

Statistical analysis

The data analysis was completed with the assistance of SPSS 22.0 software. Mean \pm SD was used to represent the measurement data, which were in accordance with a normal distribution, and the homogeneity of variance was subjected to *t* tests. The rate (%) indicates the count data, and the χ^2 test was performed. The difference was statistically significant when $P < 0.05$.

RESULTS

The main manifestations of patients with intracranial infection by the two examination methods

According to CT examination, 26 patients had abnormal CT images, mainly manifesting as diffuse cerebral edema and plaque-like low-density foci. Among them, 18 patients showed high-density enhancement of their lesions and surrounding areas after enhanced scanning. MRI examinations in 39 patients showed abnormal images, mainly due to multiple irregular lengths on T1 and long T2 signal lesions; 21 demonstrated enhanced disease after reflected scanning of patients' tumors and surrounding signal enhancement (Figure 1).

True-negative, false-negative, true-positive and false-positive results on MRI and CT

The statistics showed that the numbers of false-positive and true-positive results in 39 patients with abnormal images on MRI examination were 2 and 37, respectively, and

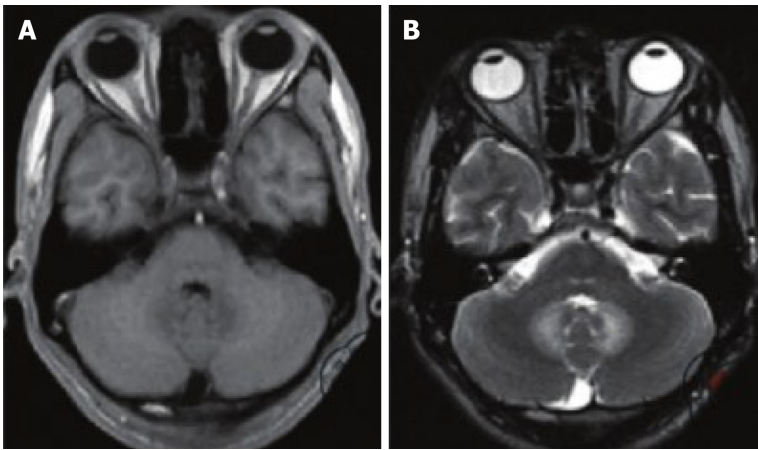


Figure 1 T1 and T2 weighted images. A: T1 weighted image data, it can be seen that the gray matter junction of the patient's brain showed an obvious low signal shadow, the boundary is blurred and the shape is irregular; B: T2 weighted image data, an obvious high signal can be seen.

the numbers of false-negative and true-negative results in 43 patients without abnormalities were 3 and 3, respectively. Among the 26 patients with abnormal CT images, 19 had true-positive results, and 7 had false-positive results; and among the 56 patients without abnormalities, 35 had true-negative results, and 21 had false-negative results (Table 1).

Comparison of diagnostic sensitivity, specificity, positive predictive value and negative predictive value of the two examination methods

The diagnostic sensitivity, specificity, and negative and positive predictive values of the MRI examinations were significantly higher than those of the CT examinations, and the difference was statistically significant ($P < 0.05$, Table 2)

Comparison of the coincidence rate of a positive diagnosis of two types of infections with different infection types

The data in Table 3 show that the coincidence rate of MRI and CT in infections [*Staphylococcus aureus* (47.50% vs 25%), *Staphylococcus hemolyticus* (20% vs 10%), *Staphylococcus epidermidis* (22.5% vs 10%), and others (12.50% vs 2.5%)] was significantly different.

Comparison of the overall diagnosis rate of MRI examination and CT examination

The overall diagnostic coincidence rate of the MRI examinations was significantly higher than that of the CT examinations (93.90% vs 65.85%, $P < 0.001$, Table 4).

DISCUSSION

The brain is an important organ for human physiological regulation, cognition, thinking and other activities. When brain disturbance occurs due to infection, trauma, ischemia or other factors, it may cause serious damage to patients' health and cognitive function^[7]. At present, craniocerebral surgery includes open surgery, minimally invasive surgery, *etc.*, with a variety of operative methods, all of which are somewhat invasive and traumatic. Under normal circumstances, brain tissue is protected by the blood-brain barrier and is not easily infected. External pathogens can easily invade brain tissue and cause infectious diseases such as brain abscess and meningitis, which seriously threaten the safety of patients' lives^[12-14].

Current common intracranial infection pathogens include *E. coli*, *Staphylococcus*, *Proteus*, *Salmonella*, *Haemophilus influenzae*, *etc.* Infection caused by the invasion of such pathogens is one of the most common complications of craniocerebral surgery and craniocerebral trauma^[15,16]. When intracranial infection occurs, the common clinical manifestations of patients include meningeal irritation, varying degrees of consciousness, and increased intracranial pressure. Relevant analysis suggests that the common causes of intracranial infections are residual foreign bodies, such as hair and skull fragments, as well as shrapnel and cap fragments, when craniocerebral trauma occurs. After such intracranial infections, patients are prone to critical illnesses such as

Table 1 True positive, false positive, true negative, false negative results

Examination method	True positive (n)	False positive (n)	True negative (n)	False negative (n)
CT	19	7	35	21
MRI	37	2	40	3

CT: Computed tomography; MRI: Magnetic resonance imaging.

Table 2 Comparison of diagnostic sensitivity, specificity, positive predictive value and negative predictive value between magnetic resonance imaging and computed tomography examinations

Examination method	Sensitivity(%)	Specificity (%)	Positive predictive value (%)	Negative predictive value (%)
CT	47.50 (19/40)	83.33 (35/42)	73.08 (19/26)	62.50 (39/56)
MRI	92.50 (37/40)	95.24 (40/42)	94.87 (37/39)	93.02 (40/43)
χ^2	48.214	7.414	17.642	26.931
P value	0.001	0.006	0.001	0.001

CT: Computed tomography; MRI: Magnetic resonance imaging.

Table 3 Comparison of coincidence rates among different types of infection and different types of examinations, n (%)

Examination methods	Number of gold standard positive cases	<i>Staphylococcus aureus</i> infection	<i>Staphylococcus epidermidis</i> infection	<i>Staphylococcus hemolyticus</i> infection	Other
CT	40	10 (25.00)	4 (10.00)	4 (10.00)	1 (2.50)
MRI	40	19 (47.50)	8 (20.00)	9 (22.50)	5 (12.50)
χ^2	-	10.953	3.922	5.741	7.207
P value	-	0.001	0.048	0.017	0.007

CT: Computed tomography; MRI: Magnetic resonance imaging.

Table 4 Comparison of overall diagnostic coincidence rates between magnetic resonance imaging and computed tomography examinations, n (%)

Examination method	Total number of cases	Missed diagnosis/ misdiagnosis	Diagnostic coincidence rate
CT	82	28 (34.15)	54 (65.85)
MRI	82	5 (6.10)	77 (93.90)
χ^2	-	24.473	
P value	-	0.001	

CT: Computed tomography; MRI: Magnetic resonance imaging.

acute cerebral edema and intracranial hematoma. The risk of death is high, and timely corresponding treatment is necessary^[17]. It is generally believed that the direct route of intracranial infection includes infection, focal infection, cerebrospinal fluid path of infection, and blood infection from 4 types of infections. Regardless of the route of infection, patients will have irreversible neurological damage, and early diagnosis and early treatment to protect patients' lives and health are essential^[18].

The determination of craniocerebral infection in patients undergoing clinical craniocerebral surgery is generally performed by cerebrospinal fluid examination following lumbar puncture. Although this examination method can effectively determine whether there is intracranial infection in patients and can identify the

infected pathogen, it is somewhat traumatic, and the operation is complicated by poor repeatability. With the development of modern imaging technology, an increasing number of clinical diseases can be diagnosed by imaging examinations, contrast puncture examinations, and imaging examinations, which are noninvasive, easy to operate, highly repeatable, more acceptable to patients and have a higher application value^[19]. CT and MRI are currently the most frequently used imaging techniques for the examination of brain diseases; these two methods can effectively check the position of lesions in patients, as well as the range, to help physicians intuitively grasp the circumferential surrounding lesion or the absence of diffusion, infiltration, *etc.* The development of craniocerebral surgery has a guiding role^[6].

CT scanning uses X, γ and other rays at a certain thickness of the human body, using corresponding electronic components to receive the rays that have penetrated the layer, digital conversion after processing, and then subjected to a series of image processing to form the subject. Examination methods are part of the image information^[20]. MRI consists of the use of a static magnetic field applying radiofrequency pulses to the body, causing the body to produce proton magnetic resonance; the proton pulse stops relaxation and generates the MR signal, using the processing electronic MR signals to obtain image information of the portion of the subject. Brain tissue is an important soft tissue organ of the human body, and its main components include protein and fat. Theoretically, MRI examination has higher resolution than CT examination.

Compared with CT examination, MRI examination has a higher sensitivity in terms of brain edema, inflammatory infiltrates, and the presence of a lesion when there is brain edema. T1-weighted images may be displayed in patients with cerebral gray matter and white matter junctions of irregular shape, and the boundaries have blurred clarity. The low-signal effect of T2-weighted imaging shows a wider range of lesions than that of T1-weighted imaging. When patients have typical meningeal enhancement and thickening, MRI may indicate purulent encephalitis.

Sensitivity, specificity, positive predictive value, and negative predictive value are all effective indicators for testing the diagnostic efficacy of a test method, of which sensitivity mainly reflects the efficacy of the evaluated test method in diagnosing patients, and specificity reflects the elimination of noninfected patients. The efficacy and positive and negative predictive values reflect the proportion of detecting true positive/negative patients and positive/negative patients in the test method, respectively. In this observation, the four diagnostic efficacy evaluation indices of MRI examination were significantly higher than those of CT examination, and MRI examination had a higher positive diagnosis rate of different infection types and overall diagnosis coincidence rate than CT examination ($P < 0.05$), suggesting that in the diagnosis of intracranial infection, MRI has greater diagnostic performance than CT, both in terms of removing the accuracy of diagnosis of infection and the lack of infection as shown on MRI. In addition to the differences in diagnostic performance, the MRI technology does not involve radiation, and the application safety is high. However, MRI is a new imaging technology, and its examination cost is generally higher than that of CT; thus, its clinical promotion is still hindered. As a result, the positive rate of diagnosis of various types of pathogenic infections by MRI examination was significantly higher than that by CT examination, and for early and late MRI abnormalities, the positive rate of diagnosis was significantly higher with MRI than with CT. The results of this study are similar to those of our previous study, further confirming that MRI has a higher diagnostic value than CT in the diagnosis of intracranial infection.

CONCLUSION

In summary, in patients with intracranial infection after brain surgery, MRI has a higher diagnostic efficiency than CT, conducive to the preference for carrying out timely detection and early treatment for infection.

ARTICLE HIGHLIGHTS

Research background

Intracranial infection is a common clinical disease and a common complication after craniocerebral surgery. In recent years, there have been advances in clinical head

computed tomography (CT) and magnetic resonance imaging (MRI) examinations of the temporal lobe to visualize focal hemorrhagic brain tissue.

Research motivation

To study the application value of MRI and CT in the diagnosis of intracranial infection after craniocerebral surgery and improve the diagnosis rate of intracranial infection.

Research objectives

This study determined the diagnostic value of MRI and CT for intracranial infection after craniocerebral surgery.

Research methods

We selected 82 patients who underwent craniocerebral surgery. All 82 patients received CT and MRI examinations, and a retrospective analysis was performed. The coincidence rate of positive diagnosis and the overall diagnosis coincidence rate of different pathogenic infection types were measured with the two examination methods.

Research results

MRI scans had higher positive diagnostic coincidence rates than CT scans; the overall diagnostic coincidence rate, sensitivity, specificity, positive predictive value, and negative predictive value were significantly higher with MRI examinations than with CT examinations, and the differences were statistically significant ($P < 0.05$).

Research conclusions

MRI can diagnose intracranial infections after clinical craniocerebral surgery more accurately than CT.

Research perspectives

To further compare the difference between CT and MRI in the diagnosis of brain diseases.

REFERENCES

- 1 **Jiang L**, Guo L, Li R, Wang S. Targeted surveillance and infection-related risk factors of nosocomial infection in patients after neurosurgical operation. *Pak J Pharm Sci* 2017; **30**: 1053-1056 [PMID: 28671080]
- 2 **Yu Y**, Li HJ. Diagnostic and prognostic value of procalcitonin for early intracranial infection after craniotomy. *Braz J Med Biol Res* 2017; **50**: e6021 [PMID: 28443989 DOI: 10.1590/1414-431X20176021]
- 3 **Ruan L**, Wu D, Li X, Huang Q, Lin L, Lin J, Chen L, Xu P, Jin J, Yang N, Li X. Analysis of microbial community composition and diversity in postoperative intracranial infection using high-throughput sequencing. *Mol Med Rep* 2017; **16**: 3938-3946 [PMID: 29067467 DOI: 10.3892/mmr.2017.7082]
- 4 **Mashiko R**, Taguchi S, Tobita T, Shibata Y. Intracranial infection caused by minor skin contusion associated with previous craniotomy. *BMJ Case Rep* 2017; **2017** [PMID: 28082307 DOI: 10.1136/bcr-2016-217833]
- 5 **Bahubali VKH**, Vijayan P, Bhandari V, Siddaiah N, Srinivas D. Methicillin-resistant *Staphylococcus aureus* intracranial abscess: An analytical series and review on molecular, surgical and medical aspects. *Indian J Med Microbiol* 2018; **36**: 97-103 [PMID: 29735835 DOI: 10.4103/ijmm.IJMM_17_41]
- 6 **Shi ZH**, Xu M, Wang YZ, Luo XY, Chen GQ, Wang X, Wang T, Tang MZ, Zhou JX. Post-craniotomy intracranial infection in patients with brain tumors: a retrospective analysis of 5723 consecutive patients. *Br J Neurosurg* 2017; **31**: 5-9 [PMID: 27845572 DOI: 10.1080/02688697.2016.1253827]
- 7 **Guerin JB**, Vork DL, Eguiguren L, Marston AP, Driscoll CLW, Carlson ML, Henry NK, Lane JJ. Labyrinthine Sequestrum: A Case Report and Review of the Literature. *Otol Neurotol* 2018; **39**: 340-343 [PMID: 29337715 DOI: 10.1097/MAO.0000000000001676]
- 8 **Wang H**. Higher Procalcitonin Level in Cerebrospinal Fluid than in Serum Is a Feasible Indicator for Diagnosis of Intracranial Infection. *Surg Infect (Larchmt)* 2020; **21**: 704-708 [PMID: 32053058 DOI: 10.1089/sur.2019.194]
- 9 **Hrishi AP**, Sethuraman M. Cerebrospinal Fluid (CSF) Analysis and Interpretation in Neurocritical Care for Acute Neurological Conditions. *Indian J Crit Care Med* 2019; **23**: S115-S119 [PMID: 31155119]

- 31485118 DOI: [10.5005/jp-journals-10071-23187](https://doi.org/10.5005/jp-journals-10071-23187)]
- 10 **Fahradyan A**, Ohanisian L, Tsuha M, Park MJ, Hammoudeh JA. An Unusual Complication of Bone Wax Utilization. *J Craniofac Surg* 2018; **29**: 976-979 [PMID: [29438209](https://pubmed.ncbi.nlm.nih.gov/29438209/) DOI: [10.1097/SCS.00000000000004321](https://doi.org/10.1097/SCS.00000000000004321)]
 - 11 **Suu-Ire R**, Begeman L, Banyard AC, Breed AC, Drosten C, Eggerbauer E, Freuling CM, Gibson L, Goharriz H, Horton DL, Jennings D, Kuzmin IV, Marston D, Ntiamoa-Baidu Y, Riesle Sbarbaro S, Selden D, Wise EL, Kuiken T, Fooks AR, Müller T, Wood JLN, Cunningham AA. Pathogenesis of bat rabies in a natural reservoir: Comparative susceptibility of the straw-colored fruit bat (*Eidolon helvum*) to three strains of Lagos bat virus. *PLoS Negl Trop Dis* 2018; **12**: e0006311 [PMID: [29505617](https://pubmed.ncbi.nlm.nih.gov/29505617/) DOI: [10.1371/journal.pntd.0006311](https://doi.org/10.1371/journal.pntd.0006311)]
 - 12 **Lin C**, Zhao X, Sun H. Analysis on the risk factors of intracranial infection secondary to traumatic brain injury. *Chin J Traumatol* 2015; **18**: 81-83 [PMID: [26511298](https://pubmed.ncbi.nlm.nih.gov/26511298/) DOI: [10.1016/j.cjtee.2014.10.007](https://doi.org/10.1016/j.cjtee.2014.10.007)]
 - 13 **Yu H**, Liu G. [Analysis of factors of intracranial infection after transnasal endoscopic craniobase approach]. *Lin Chung Er Bi Yan Hou Tou Jing Wai Ke Za Zhi* 2014; **28**: 1544-1546 [PMID: [25764748](https://pubmed.ncbi.nlm.nih.gov/25764748/)]
 - 14 **Mo S**, Wei L, Chen H, Li R, Li S, Luo G. A chinese case of prevotella intermedia and streptococcus constellatus intracranial mixed infection. *Metab Brain Dis* 2018; **33**: 161-166 [PMID: [29094233](https://pubmed.ncbi.nlm.nih.gov/29094233/) DOI: [10.1007/s11011-017-0142-x](https://doi.org/10.1007/s11011-017-0142-x)]
 - 15 **Hussein K**, Rabino G, Feder O, Eghbaryeh H, Zayyad H, Svirgi G, Benenson R, Paul M. Risk factors for meningitis in neurosurgical patients with cerebrospinal fluid drains: prospective observational cohort study. *Acta Neurochir (Wien)* 2019; **161**: 517-524 [PMID: [30666453](https://pubmed.ncbi.nlm.nih.gov/30666453/) DOI: [10.1007/s00701-019-03801-y](https://doi.org/10.1007/s00701-019-03801-y)]
 - 16 **Akhaddar A**, Hall W, Boucetta M. Subgaleal and brain abscesses due to *Salmonella enteritidis* following craniotomy for giant cell glioblastoma multiforme: A case report and literature review. *Surg Neurol Int* 2019; **10**: 37 [PMID: [31528375](https://pubmed.ncbi.nlm.nih.gov/31528375/) DOI: [10.25259/SNI-31-2019](https://doi.org/10.25259/SNI-31-2019)]
 - 17 **Peng Y**, Liu X, Pan S, Xie Z, Wang H. Anti-N-methyl-D-aspartate receptor encephalitis associated with intracranial *Angiostrongylus cantonensis* infection: a case report. *Neurol Sci* 2017; **38**: 703-706 [PMID: [27778112](https://pubmed.ncbi.nlm.nih.gov/27778112/) DOI: [10.1007/s10072-016-2718-3](https://doi.org/10.1007/s10072-016-2718-3)]
 - 18 **Offiah CE**, Naseer A. Spectrum of imaging appearances of intracranial cryptococcal infection in HIV/AIDS patients in the anti-retroviral therapy era. *Clin Radiol* 2016; **71**: 9-17 [PMID: [26564776](https://pubmed.ncbi.nlm.nih.gov/26564776/) DOI: [10.1016/j.crad.2015.10.005](https://doi.org/10.1016/j.crad.2015.10.005)]
 - 19 **Ramgopal S**, Obeid R, Zuccoli G, Cleves-Bayon C, Nowalk A. Lyme disease-related intracranial hypertension in children: clinical and imaging findings. *J Neurol* 2016; **263**: 500-507 [PMID: [26739381](https://pubmed.ncbi.nlm.nih.gov/26739381/) DOI: [10.1007/s00415-015-8007-x](https://doi.org/10.1007/s00415-015-8007-x)]
 - 20 **Sica GT**, Norton KI. Intracranial human immunodeficiency virus infection in an infant: sonographic findings. *Pediatr Radiol* 1990; **21**: 64-65 [PMID: [2287545](https://pubmed.ncbi.nlm.nih.gov/2287545/) DOI: [10.1007/BF02010819](https://doi.org/10.1007/BF02010819)]



Published by **Baishideng Publishing Group Inc**
7041 Koll Center Parkway, Suite 160, Pleasanton, CA 94566, USA

Telephone: +1-925-3991568

E-mail: bpgoffice@wjgnet.com

Help Desk: <https://www.f6publishing.com/helpdesk>

<https://www.wjgnet.com>

