

Match Overview

1	Crossref 91 words Masaaki Iwatsuki, Hiroshi Takamori, Kojiro Eto, Kenji Shimizu et al. "Repeated recurrence of a gastric gastrointestinal stromal tumor: A case report"	5%
2	Crossref 21 words S. Bauer, P. Rutkowski, P. Hohenberger, R. Miceli et al. "Long-term follow-up of patients with GIST undergoing metastasectomy"	1%
3	Internet 15 words crawled on 02-Mar-2017 www.jstage.jst.go.jp	1%

Name of Journal: *World Journal of Gastroenterology*

Manuscript NO: 57032

Manuscript Type: CASE REPORT

Solitary peritoneal metastasis of gastrointestinal stromal tumor: A case report

Yoichi Sugiyama, Kensuke Shimbara, Masaru Sasaki, Mohei Kouyama, Tatsuya Tazaki,
Shinya Takahashi, Atsushi Nakamitsu

Abstract

BACKGROUND

A gastrointestinal stromal tumor (GIST) is a mesenchymal tumor of the gastrointestinal tract that is most commonly found in the stomach. Recurrence of GISTs mostly occurs

Solitary peritoneal metastasis of gastrointestinal stromal tumor: .



ALL

IMAGES

VIDEOS

37,400 Results

Any time ▾

[Orbital metastasis from a gastrointestinal stromal tumor ...](#)

<https://www.ncbi.nlm.nih.gov/pmc/articles/PMC6699248>

Gastrointestinal stromal tumor (GIST) is the most common primary **mesenchymal tumor**. The most common **metastasis** sites are the liver and the surface of the **peritoneum** ¹ ; **orbital metastasis of GIST** is very rare. ² , ³ , ⁴ In this study, we **report** the third **case** of an **orbital GIST metastasis**, as confirmed with histopathology and immunohistochemistry, as well as the patient's clinical manifestation and MRI ...

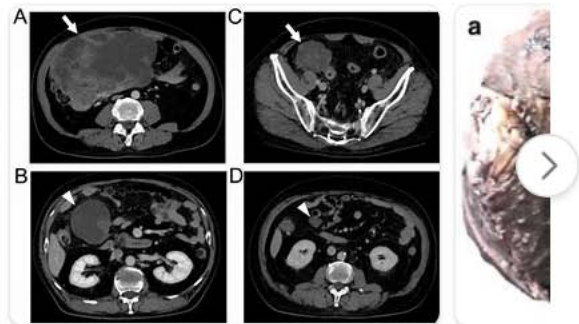
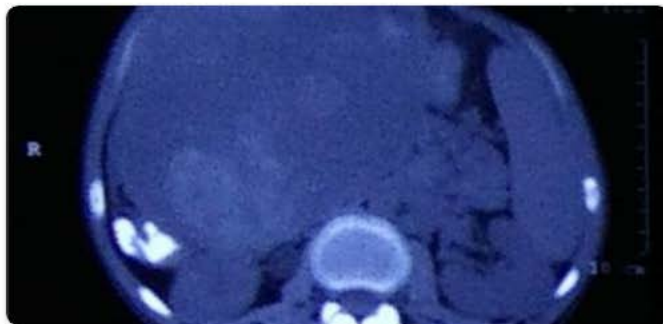
Author: Yan Yu, Xiaoqian Ji, Wei Li, Changfan Wu **Publish Year:** 2019

[\[PDF\] Case Report Huge gastrointestinal stromal tumor with ...](#)

www.ijcem.com/files/ijcem0057829.pdf

Gastrointestinal stromal tumor with peritoneal metastasis 13871 Int J Clin Exp Med 2017;10(9):13868-13873 phragm and down toward the anterior superior spine. There were no signs of lymphadenopathy or liver disease. But, the stomach, pancreas, spleen, left kidney, intestine, colonic were pres - sured and might be invaded (Figure 1).

[Images of solitary peritoneal metastasis of gastrointestinal stroma...](#)

bing.com/images



Solitary peritoneal metastasis of gastrointestinal stromal tumor: A case r



Sign in



ALL

IMAGES

VIDEOS

38,600 Results

Any time ▾

Gastrointestinal stromal tumor solitary distant recurrence ...

<https://www.ncbi.nlm.nih.gov/pmc/articles/PMC4445120>

May 28, 2015 · Core tip: This **report** presents the first **case** of the **solitary** distant recurrence of a **gastrointestinal stromal tumor** in skeletal muscle after complete remission had been achieved. This **case**, along with previous reports, indicates that an extended period of tyrosine-kinase inhibitor therapy may reduce **metastasis** and recurrence in patients with **gastrointestinal stromal tumors**.

Cited by: 3

Author: Su-Sin Jin, Hyeong-Seok Jeong, Hyun-Ji...

Publish Year: 2015

Extra-abdominal subcutaneous metastasis of a ...

<https://pubmed.ncbi.nlm.nih.gov/19476525>

Gastrointestinal stromal tumors (GISTs) metastasize primarily within the **peritoneal cavity** and to the liver. Superficial soft tissue metastases occur in about 1% of advanced GIST and are mostly associated with abdominal laparotomy scars and advanced disease. **Extra-abdominal subcutaneous metastases** of GIST have not been previously reported.

Gastrointestinal Stromal Tumors (Gists)

Medical condition

A gastrointestinal stromal tumor (GIST) is a type of tumor that occurs in the gastrointestinal tract, most commonly in the stomach or small intestine.

NIH

Symptoms

The symptoms depend on the size of the tumor and where it's located. Because of this, symptoms often vary in severity and from one person to another.



ALL IMAGES VIDEOS

38,600 Results

Any time ▾

Gastrointestinal stromal tumor solitary distant recurrence ...

<https://www.ncbi.nlm.nih.gov/pmc/articles/PMC4445120>

May 28, 2015 - Gastrointestinal stromal tumors (GISTs) are mesenchymal tumors of the gastrointestinal tract that are most commonly found in the stomach. Although GISTs can spread to the liver and peritoneum, metastasis to the **skeletal muscle** is very rare ...

Cited by: 3 **Author:** Su-Sin Jin, Hyeong-Seok Jeong, Hyun-Ji...

Publish Year: 2015

Giant gastrointestinal stromal tumor of the vermiform ...

<https://www.ncbi.nlm.nih.gov/pubmed/28894578>

We herein report the case of a 67-year-old male patient with an unusually large GIST (22 cm in diameter) of uncertain origin in the right lower abdominal quadrant, with a solitary peritoneal metastasis. Due to the size of this GIST and presence of metastatic disease, neoadjuvant therapy with imatinib (400 mg/day orally) was administered. Follow-up imaging studies revealed marked ...

Cited by: 3 **Author:** Manabu Kaneko, Kazushige Kawai, Koji ...

Publish Year: 2017

Extra-abdominal subcutaneous metastasis of a ...

<https://pubmed.ncbi.nlm.nih.gov/19476525>

Gastrointestinal stromal tumors (GISTs) metastasize primarily within the **peritoneal cavity** and to the liver. Superficial soft tissue metastases occur in about 1% of advanced GIST and are mostly associated with abdominal laparotomy scars and advanced disease. **Extra-abdominal subcutaneous metastases** of GIST have not been previously reported.

Cited by: 16 **Author:** Judith R Kroep, Judith V M G Bovée, Aart...

Publish Year: 2009

Cerebellar metastasis of gastrointestinal stromal tumor: A ...

<https://pubmed.ncbi.nlm.nih.gov/29248834>

Cerebellar metastasis of gastrointestinal stromal tumor: A case report and review of the literature Gastrointestinal stromal tumors are **frequent neoplasms with a high metastasizing potential on liver and peritoneum**. Brain metastases are extremely rare and the prognosis is worse when they are present.

Gastrointestinal Stromal Tumors (Gists)

Medical condition

A gastrointestinal stromal tumor (GIST) is a type of tumor that occurs in the gastrointestinal tract, most commonly in the stomach or small intestine.

NIH

Symptoms

The symptoms depend on the size of the tumor and where it's located. Because of this, symptoms often vary in severity and from one person to another.

Some of the more common symptoms include:

- bloody stools
- pain or discomfort in the abdomen
- nausea and...

[Read more on Healthline](#)

Causes

There are only a few known risk factors for GISTs:

Age

The most common age to develop a GIST is between 50 and 80. While GISTs can happen in people younger than 40, they are extremely rare.

Genes

The majority of GISTs happen randomly and have no...

[Read more on Healthline](#)

Treatments

The primary treatment for GIST is surgery. During surgery, the tumor is removed completely in approximately 85% of cases.