

Name of Journal: *World Journal of Gastroenterology*

Manuscript NO: 57263

Manuscript Type: ORIGINAL ARTICLE

Observational Study

Inactive Matrix Gla protein is elevated in patients with inflammatory bowel disease

Brnic D *et al.* MGP in patients with IBD

Darko Brnic, Dinko Martinovic, Piero Marin Zivkovic, Daria Tokic, Marino Vilovic, Doris Rusic, Ivana Tadin Hadjina, Christian Libers, Sandro Glumac, Daniela Supe-Domic, Ante Tonkic, Josko Bozic

Abstract

BACKGROUND

Matrix Gla protein (MGP) is a vitamin K dependent peptide which has an established

Match Overview

1	Crossref 225 words Darko Brnić, Dinko Martinovic, Piero Marin Zivkovic, Daria Tokic et al. "Serum adropin levels are reduced in patients wit	5%
2	Internet 112 words repozitorij.mefst.unist.hr	3%
3	Internet 53 words crawled on 25-Dec-2016 office.wjgnet.com	1%
4	Internet 45 words crawled on 01-Jan-2020 www.science.gov	1%
5	Crossref 31 words "Biomarkers in Cardiovascular Disease", Springer Science and Business Media LLC, 2016	1%
6	Crossref 24 words Mijac, D.D.. "Nutritional status in patients with active inflam matory bowel disease: Prevalence of malnutrition and me ...	1%
7	Internet 20 words crawled on 22-Jan-2018 www.acsm.org	<1%
8	Crossref 17 words Stefanos Roumeliotis, Athanasios Roumeliotis, Stylianos P anagoutsos, Efsthia Giannakonoulou et al. "Matrix Gla pro	<1%



ALL

IMAGES

VIDEOS

37,200 Results

Any time ▼

(PDF) Inactive matrix gla protein plasma levels are ...

https://www.researchgate.net/publication/339468617_Inactive_matrix_gla_protein_plasma...

Inactive matrix gla protein plasma levels are associated with peripheral neuropathy in Type 2 diabetes Article (PDF Available) in PLoS ONE 15(2):e0229145 · February 2020 with 54 Reads

Inactive Matrix Gla Protein, Arterial Stiffness, and ...

<https://academic.oup.com/ajh/article/31/6/735/4964022> ▼

Apr 07, 2018 · **BACKGROUND Matrix Gla protein (MGP)** is a vascular calcification inhibitor dependent upon **vitamin K** for activation. Evidence suggests that elevated plasma inactive MGP levels (**desphospho-uncarboxylated MGP, dp-ucMGP**; indicating poorer **vascular vitamin K status**) are associated with **greater cardiovascular disease (CVD)** risk.

Cited by: 6

Author: Mary Ellen Fain, Gaston K Kapuku, Willi...

Publish Year: 2018

The Circulating Inactive Form of Matrix Gla Protein Is a ...

<https://www.ncbi.nlm.nih.gov/pmc/articles/PMC2849687>

Oct 06, 2009 · Although many factors may influence the occurrence and progression of this condition, the fact that 20% to 40% of the **patients** in most CKD cohorts (8 –10) do not develop detectable **VC** (despite exposure to well-known environmental triggers, such as uremia, **diabetes**, and hyperphosphatemia) suggests that naturally occurring **VC inhibitors** have an important role in preventing this disease process. **Matrix Gla protein (MGP)**...

Cited by: 222

Author: Leon J. Schurgers, Daniela V. Barreto, F...

Publish Year: 2010

Bone metabolism parameters and inactive matrix Gla protein ...

<https://academic.oup.com/sleep/article-abstract/43/3/zsz243/5601327> ▼

Furthermore, its **inactive, inactive matrix Gla protein (dp-ucMGP)** is considered to be a direct

国内版 国际版

Inactive Matrix Gla protein is elevated in patients with inflammatory



ALL

IMAGES

VIDEOS

Add the Giv

25,300 Results

Any time ▾

Association of the Inactive Circulating Matrix Gla Protein ...

<https://www.ncbi.nlm.nih.gov/pmc/articles/PMC6387246>

Feb 01, 2019 · 1. Introduction. Vascular calcification (VC) is an ongoing process that starts in childhood and develops as humans grow. It may occur in advanced age as a natural phenomenon, but in conditions with **high** atherogenic status—such as diabetes [], oxidative stress [2,3], and chronic kidney **disease** (CKD) []—it may appear earlier, in a greater degree, and is associated with increased ...

Cited by: 20

Author: Stefanos Roumeliotis, Evangelia Dounousi, ...

Publish Year: 2019

The Circulating Inactive Form of Matrix Gla Protein Is a ...

<https://www.ncbi.nlm.nih.gov/pmc/articles/PMC2849687>

Oct 06, 2009 · Background and objectives: Vitamin K-dependent **matrix Gla protein** (MGP) acts as a calcification inhibitor in vitro and in vivo. The present study was performed to (1) determine plasma levels of the **inactive**, dephosphorylated, uncarboxylated MGP (dp-ucMGP) in a cohort of **patients** at different stages of chronic kidney **disease** (CKD) and (2) evaluate the association between dp-ucMGP levels on ...

Cited by: 244

Author: Leon J. Schurgers, Daniela V. Barreto, Felly...

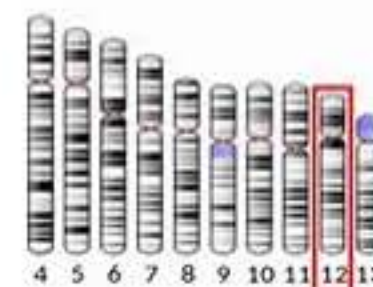
Publish Year: 2010

Bone metabolism parameters and inactive matrix Gla protein ...

<https://academic.oup.com/sleep/article-abstract/43/...> ▾

Oct 21, 2019 · Furthermore, its **inactive**, **inactive matrix Gla protein** (dp-ucMGP) is considered to be a

Matrix Gla Protein



Matrix Gla protein (MGP) is member of a family of vitamin-K2 dependent, Gla-containing proteins. MGP has a high affinity binding to calcium ions, similar to other Gla-containing proteins. The protein acts as an inhibitor of vascular mineralization and plays a role in bone organization.

Wikipedia

Data from: Wikipedia

[Suggest an edit](#)

Search Tools

[Turn off Hover Translation \(关闭取词\)](#)



Inactive matrix Gla protein is elevated in patients with inflammatory



ALL IMAGES VIDEOS MAPS NEWS SHOPPING

25,200 Results Any time ▾

Association of the Inactive Circulating Matrix Gla Protein ...

<https://www.ncbi.nlm.nih.gov/pmc/articles/PMC6387246>

Feb 01, 2019 · 1. Introduction. Vascular calcification (VC) is an ongoing process that starts in childhood and develops as humans grow. It may occur in advanced age as a natural phenomenon, but in conditions with **high** atherogenic status—such as diabetes [], oxidative stress [2,3], and chronic kidney **disease** (CKD) []—it may appear earlier, in a greater degree, and is associated with increased ...

Cited by: 20

Author: Stefanos Roumeliotis, Evangelia Dounou...

Publish Year: 2019

Bone metabolism parameters and inactive matrix Gla protein ...

<https://academic.oup.com/sleep/article-abstract/43/...> ▾

Furthermore, its **inactive**, **inactive matrix Gla protein** (dp-ucMGP) is considered to be a direct marker of vitamin K levels and could be associated with increased arterial stiffness and cardiovascular risk in general [25, 26]. According to the mentioned reports, MGP could have an ...

Author: Marino Vilovic, Zoran Dogas, Tina Tici...

Publish Year: 2019

Inactive Matrix Gla Protein, Arterial Stiffness, and ...

<https://academic.oup.com/ajh/article/31/6/735/4964022> ▾

Apr 07, 2018 · Matrix Gla protein (MGP) is a vascular calcification inhibitor dependent upon vitamin K for activation. Evidence suggests that elevated **plasma inactive** MGP levels (desphospho-uncarboxylated MGP, dp-ucMGP; indicating poorer vascular vitamin K status) are associated with greater cardiovascular **disease** (CVD) risk.

Cited by: 10

Author: Mary Ellen Fain, Gaston K Kapuku, Willia...

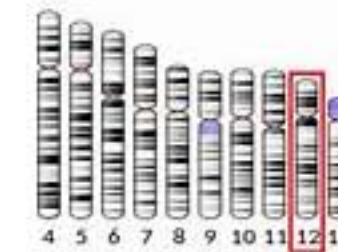
Publish Year: 2018

The Circulating Inactive Form of Matrix Gla Protein Is a ...

<https://cjasn.asnjournals.org/content/5/4/568> ▾

Apr 01, 2010 · Although many factors may influence the occurrence and progression of this condition, the fact that 20% to 40% of the patients in most CKD cohorts (8–10) do not develop detectable VC (despite exposure to well-known environmental triggers, such as uremia, diabetes, and hyperphosphatemia) suggests that naturally occurring VC inhibitors have an important role in preventing this disease process.

Matrix Gla Protein



Matrix Gla protein (MGP) is member of a family of vitamin-K2 dependent, Gla-containing proteins. MGP has a high affinity binding to calcium ions, similar to other Gla-containing proteins. The protein acts as an inhibitor of vascular mineralization and plays a role in bone organization.

Wikipedia

Data from: Wikipedia

[Suggest an edit](#)