



Certificate of Editing

Edited provisional title
Effects of metformin on stem cells: Molecular mechanisms and
clinical prospects

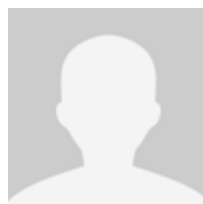
Client name and institution
Linli Jiang, Lei Liu, West Hospital of Stomatology, Sichuan University

Date Completed
2020-06-11

Identification code
83848

Certificate issued by
Koji Yamashita
Managing Director and CEO

A black ink signature of Koji Yamashita, written in a cursive style.



Expert Editor: Mitchell Arico
2006 (Hons) Stem Cell Biology
Monash University
Oncology and Carcinogenesis, Immunology,
Medicinal and Biomolecular Chemistry

www.liwenbianji.cn

While this certificate confirms the authors have used Edanz's editing services, we cannot guarantee that additional changes have not been made after our edits.