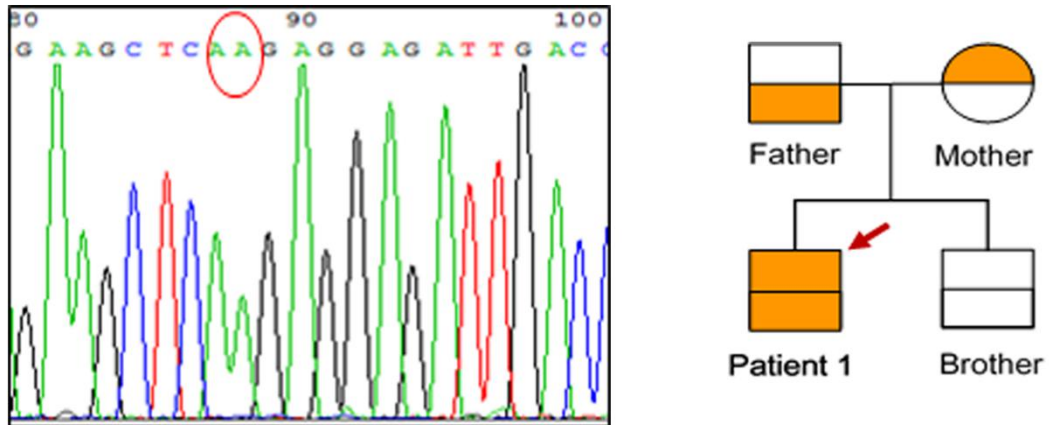
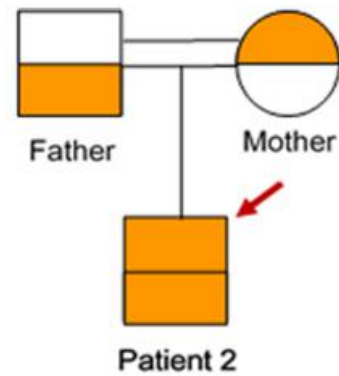
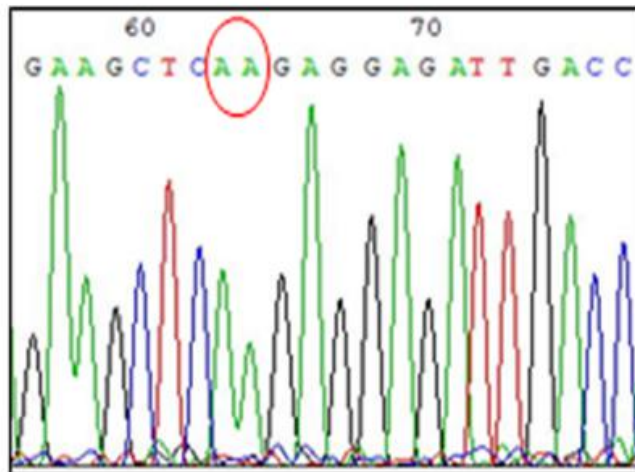


Supplementary material

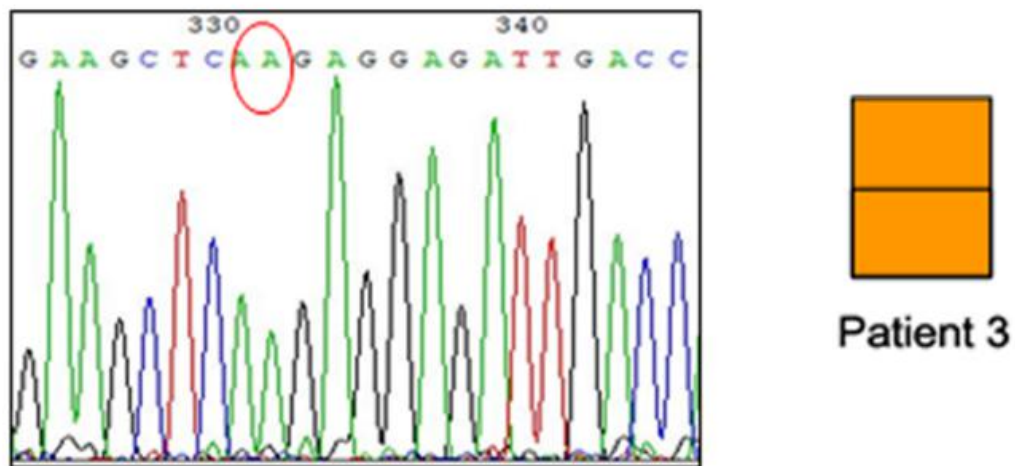
Supplementary material 1 TAC 329 AA (in red oval frame) was detected in exon 6 of the *CYP17A1* gene by Sanger sequencing in three patients of our hospital, suggesting the existence of homozygous mutation of



Supplementary Figure 1 The *CYP17A1* gene exon 6 sequencing result of Case 1 and pedigree of the family.



Supplementary Figure 2 The *CYP17A1* gene exon 6 sequencing result of Case 2 and pedigree of the family.



Supplementary Figure 3 The *CYP17A1* gene exon 6 sequencing result of **Case 3**. She was an adopted child, and her biological parents are unknown.

Supplementary material 2 All the eight exons and the flanking introns of the *CYP17A1* gene were amplified using the primers as described below.

Exon 1

Forward: 5'-CAC TGC TGT CTA TCT TGC C-3'

Reverse: 5'-CCT TCA CAT CAT CCC ACT A-3'

Exon 2

Forward: 5'-AGG GAC CAG AGG TGT AAG-3'

Reverse: 5'-GCA GCA GTA GCC AAG AA-3'

Exon3

Forward: 5'-AGG GTG CTG ATT CAT TTC-3'

Reverse: 5'-GCA GAG GAG GTA GAG GTG-3'

Exon4

Forward: 5'-CGC TTG ATG TTT GAT TGA-3'

Reverse: 5'-CAC CCT GCT CTT GTG ATT-3'

Exon5

Forward: 5'-ACA GAA GTA TGG CAG GAG T-3'

Reverse: 5'-CCA GAG TAG GTT GGA GGT-3'

Exon6

Forward: 5'-ACT GGG AAG GGA CTG GA-3'

Reverse: 5'-GGC TAG ATG TCA CTG GGA G-3'

Exon7

Forward: 5'-AGT GGG AAT GAG GGA GTA-3'

Reverse: 5'- GTC AAC AGG TCG GTA TAG TT -3'

Exon8

Forward: 5'- TCA ACC AGG GCA GAA CC -3'

Reverse: 5'- GGA AGA ATG GCG GAG AA -3'