

**Name of Journal:** *World Journal of Clinical Cases*

**Manuscript NO:** 60852

**Manuscript Type:** ORIGINAL ARTICLE

*Clinical and Translational Research*

**Circulating tumor cells with epithelial-mesenchymal transition markers as the potential biomarker for the diagnosis of lung cancer**

diagnostic value of CTCs categorized by EMT markers in LC

Sha-Sha Jiang, Chun-guo Mao, Yong-geng Feng, Bin Jiang, Shao-lin Tao, Qun-you Tan, Bo Deng

## Match Overview

1	<b>Crossref</b> 78 words Shasha Jiang, Chunguo Mao, Bin Jiang, Qunyou Tan, Bo Deng. "High Expression of BCAR1 by Circulating Tumor	2%
2	<b>Internet</b> 49 words crawled on 02-Dec-2020 <a href="http://www.oncotarget.com">www.oncotarget.com</a>	2%
3	<b>Crossref</b> 45 words Xu-Rui Jin, Lu-Yao zhu, Kai Qian, Yong-Geng Feng, Jing-Hai Zhou, Ru-Wen Wang, Li Bai, Bo Deng, Naixin Liang,	1%
4	<b>Internet</b> 19 words crawled on 30-Jul-2020 <a href="http://www.spandidos-publications.com">www.spandidos-publications.com</a>	1%
5	<b>Internet</b> 15 words crawled on 13-Oct-2019 <a href="http://www.endometriosi.it">www.endometriosi.it</a>	<1%
6	<b>Internet</b> 14 words crawled on 21-Oct-2020 <a href="http://www.researchsquare.com">www.researchsquare.com</a>	<1%
7	<b>Internet</b> 12 words	

ALL

IMAGES

VIDEOS

 Add the Give with Bing extension >

135,000 Results

Any time ▾

Open links in new tab 

## Epithelial-mesenchymal transition classification of ...

<https://tcr.amegroups.com/article/view/46136/html> ▾

Epithelial-mesenchymal transition (EMT) is a key process for cancer metastasis that involves down-regulation of epithelial markers such as epithelial cell adhesion molecule (EpCAM) and cytokeratins (CKs) and up-regulation of mesenchymal markers such as **vimentin** and **TWIST1** ...

**Author:** Jinman Fang, Weimin Wang, Jie F... **Publish Year:** 2020

## Classification of Circulating Tumor Cells by Epithelial ...

<https://journals.plos.org/plosone/article?id=10.1371/journal.pone.0123976> ▾

Apr 24, 2015 · In **cancer**, **epithelial-mesenchymal transition** (EMT) is associated with metastasis. Characterizing EMT phenotypes in **circulating tumor cells** (CTCs) has been challenging because epithelial marker-based methods have typically been used for the isolation and detection of CTCs from blood samples.

**Cited by:** 187**Author:** Shiyang Wu, Suyan Liu, Zhiming Liu, ...**Publish Year:** 2015

## Search Tools

[Turn off Hover Translation \(关闭取词\)](#)

激活 Windows

转到“设置”以激活 Windows。

[Images of Circulating Tumor Cells With Epithelial-mesenchym...](#)



ALL IMAGES VIDEOS MAPS NEWS SHOPPING

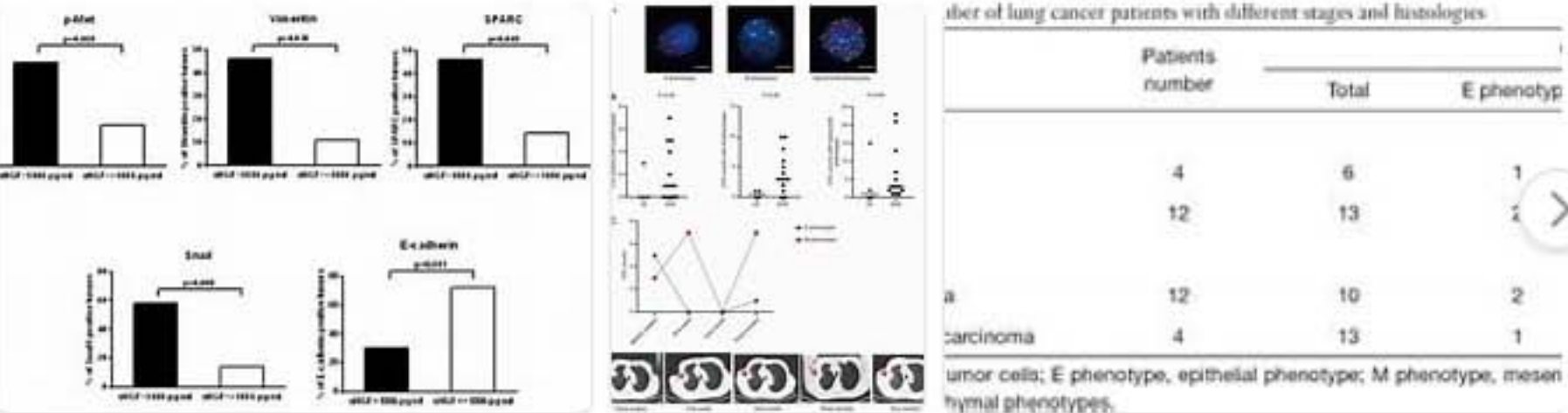
145,000 Results Any time

Circulating Tumor Cells Undergoing the Epithelial ...

https://www.dovepress.com/circulating-tumor-cells...

Preoperative analysis of circulating tumor cells for the evaluation of prognosis in cytokeratin 19-positive hepatocellular carcinoma. Click to read more. Javascript is currently disabled in your browser.

Images of circulating Cancer Cell With Epithelium Mesenchymal tr...  
bing.com/images



See all images >

PEOPLE ALSO ASK

- What is a circulating tumor cell? ✓
- What causes metastatic cells? ✓
- What is the shedding of tumor cells? ✓
- Is breast cancer the most common cancer? ✓

Feedback

Epithelial-mesenchymal transition and GALC expression of ...