

Name of Journal: *World Journal of Psychiatry*

Manuscript NO: 61766

Manuscript Type: REVIEW

Selective serotonin reuptake inhibitors and risk reduction for cardiovascular disease
in patients with schizophrenia: A controversial but promising approach

Alfredo Bellon, Kieuhanh Nguyen

Match Overview

1	Crossref 45 words Linda Bui, Zahra Zhu, Stephanie Hawkins, Alonso Cortez-Resendiz, Alfredo Bellon. "Vitamin D regulation of the imr ...	1%
2	Internet 28 words crawled on 17-Apr-2021 www.preprints.org	1%
3	Internet 25 words crawled on 19-Jun-2015 easap.asia	1%
4	Internet 23 words crawled on 20-Mar-2016 www.dovepress.com	1%
5	Internet 18 words crawled on 15-Mar-2008 clinical.diabetesjournals.org	<1%

SSRIs as Risk Reduction for Cardiovascular Disease in Patients with



ALL

IMAGES

VIDEOS

623,000 Results

Any time ▾

Cardiovascular mechanisms of SSRI drugs and their benefits ...

<https://www.researchgate.net/publication/234157874...>

Patients with **schizophrenia** (SCZ) are at high risk of **cardiovascular disease** (CVD) due to an inherited predisposition, a sedentary life style and the use of antipsychotic medications.

SSRIs, SNRIs and Cardiovascular Risk | College of Pharmacy ...

<https://www.pharmacy.umn.edu/.../ssris-snr-is-and-cardiovascular-risk> ▾

Of the **SSRIs**, paroxetine, sertraline, escitalopram and fluoxetine have the highest affinity for the serotonin transporter and are most likely to decrease platelet activity, reduce clotting and increase bleeding **risk**. Of the SNRIs, venlafaxine and duloxetine have the most data available **for cardiovascular** risks.

Search Tools

[Turn on Hover Translation \(开启取词\)](#)

PEOPLE ALSO ASK

Can SSRI cause coronary artery disease?



Can antidepressants cause heart disease?



Do SSRIs affect mortality?



Can lofepramine cause depression?



Selective serotonin reuptake inhibitors and risk reduction for cardio



ALL

IMAGES

VIDEOS

41,400 Results

Any time ▾

Selective serotonin reuptake inhibitors, and serotonin and ...

<https://journals.plos.org/plosmedicine/article?id=10.1371/journal.pmed.1003664> ▾

1 day ago · In a meta-analysis of randomized trials, Natan Pereira Gosmann and colleagues study efficacy of SSRIs and SNRIs for symptoms of anxiety, obsessive-compulsive, and ...

Effect of Selective Serotonin Reuptake Inhibitors on ...

https://www.researchgate.net/publication/5563752_Effect_of_Selective_Serotonin...

Patients with schizophrenia (SCZ) are at high risk of cardiovascular disease (CVD) due to an inherited predisposition, a sedentary life style and the use of antipsychotic medications.

The impact of SSRIs on mortality and cardiovascular events ...

<https://www.researchgate.net/publication/342651148...>

Forest plot of the meta-analyses evaluating the effect of SSRIs compared to control on a all-cause mortality, and b myocardial infarction **risk in patients** with coronary artery **disease** and depression.

Estimated Reading Time: 8 mins

42,400 Results

Any time ▾

Effect of Selective Serotonin Reuptake Inhibitors on ...

<https://link.springer.com/article/10.2165/00129784-200303030-00001> ▾

Sep 20, 2012 · The more restrictive **approach** to include only **patients** without clinical **risk** factors for ischemic **heart disease** prior to the index date chosen by Meier and colleagues might partly explain the lack of an increased **risk** for developing acute MI in users of non-SSRIs in their study, the group that mainly comprised users of tricyclic antidepressants.

Cited by: 54

Author: Raymond G. Schlienger, Raymond G. Schlie...

Publish Year: 2003

Pharmacotherapy for Post-traumatic Stress Disorder In ...

<https://www.ncbi.nlm.nih.gov/pmc/articles/PMC3278188>

Serotonin–Norepinephrine Reuptake Inhibitors Venlafaxine Like fluoxetine, the SNRI venlafaxine is not approved for the treatment of PTSD, but it is often used off label as first-line monotherapy in these **patients**. 1, 2 Venlafaxine acts primarily as a **serotonin reuptake inhibitor** (SRI) at lower dosages and as a combined **serotonin–norepinephrine reuptake inhibitor** (SNRI) at higher dosages. 2

Cited by: 25

Author: Walter Alexander

Publish Year: 2012

Pharmacological treatment of anxiety disorders: Current ...

<https://www.ncbi.nlm.nih.gov/pmc/articles/PMC3539724>

2.1.1. **Selective serotonin reuptake inhibitors** (SSRIs) and **serotonin–norepinephrine reuptake inhibitors** (SNRIs) The widely studied SSRIs, and to a growing degree, the SNRIs (and for obsessive–compulsive disorder [OCD] the mixed noradrenergic and serotonergic **reuptake inhibitor** tricyclic clomipramine), are considered the first-line pharmacological treatments for anxiety disorders (see ...

Cited by: 156

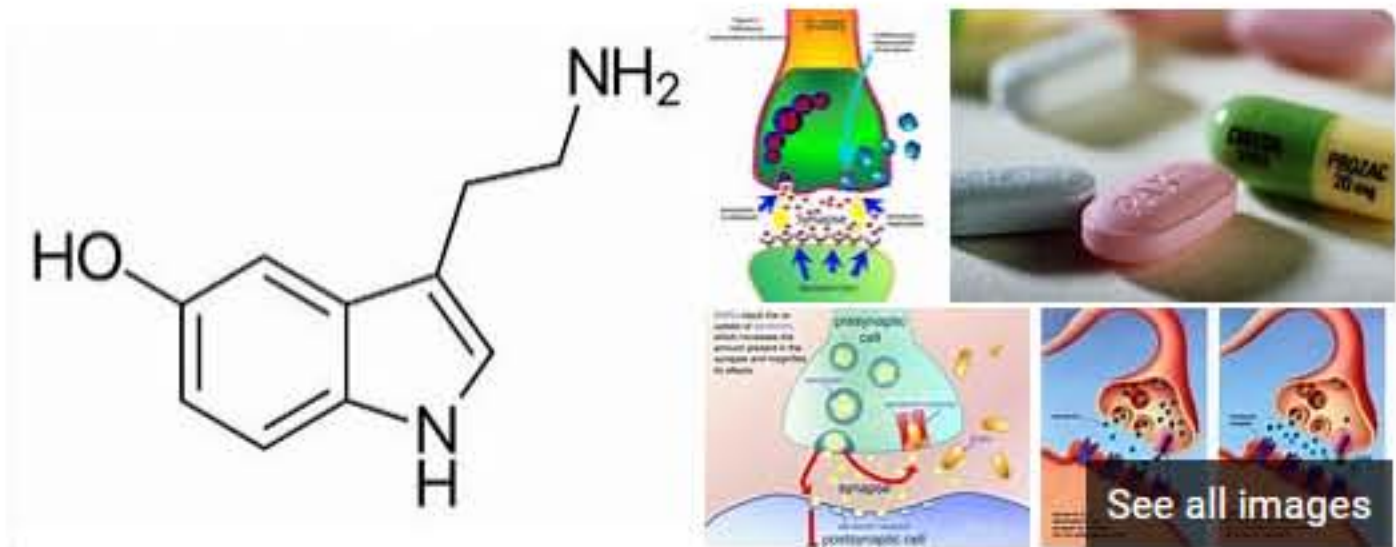
Author: Frank J. Farach, Larry D. Pruitt, Janie J. Jun...

Publish Year: 2012

Combined Use of Aspirin and Selective Serotonin Reuptake ...

https://journals.lww.com/ajg/_layouts/15/oaks...

1 day ago · of aspirin and **selective serotonin reuptake inhibitors** (SSRIs)—either as monotherapy or combined—can have a clinical benefit against CRC. METHODS: We performed a nested case-control study using nationwide Swedish registers. We recruited 24,786 CRC cases and randomly matched to 74,358 controls conditional on birth year and sex using incidence-density sampling. The conditional ...



Selective serotonin reuptake inhibitor

Class of Drugs

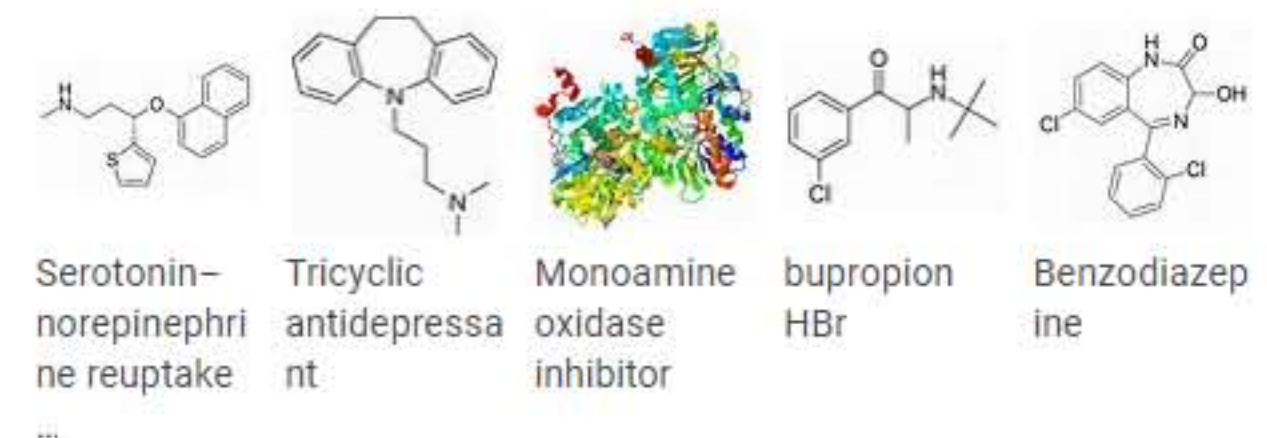
Selective serotonin reuptake inhibitors are a class of drugs that are typically used as antidepressants in the treatment of major depressive disorder, anxiety disorders, and other psychological conditions.

 [Wikipedia](#)

May treat: [Anxiety Disorder](#) · [Major Depressive Disorder](#) · [Panic Disorder](#) · [Generalized Anxiety Disorder](#) · [Obsessive Compulsive Disorder](#) +

People also search for

[See all \(15+\)](#)



Data from: [Wikipedia](#) · [Freebase](#)

[Suggest an edit](#)