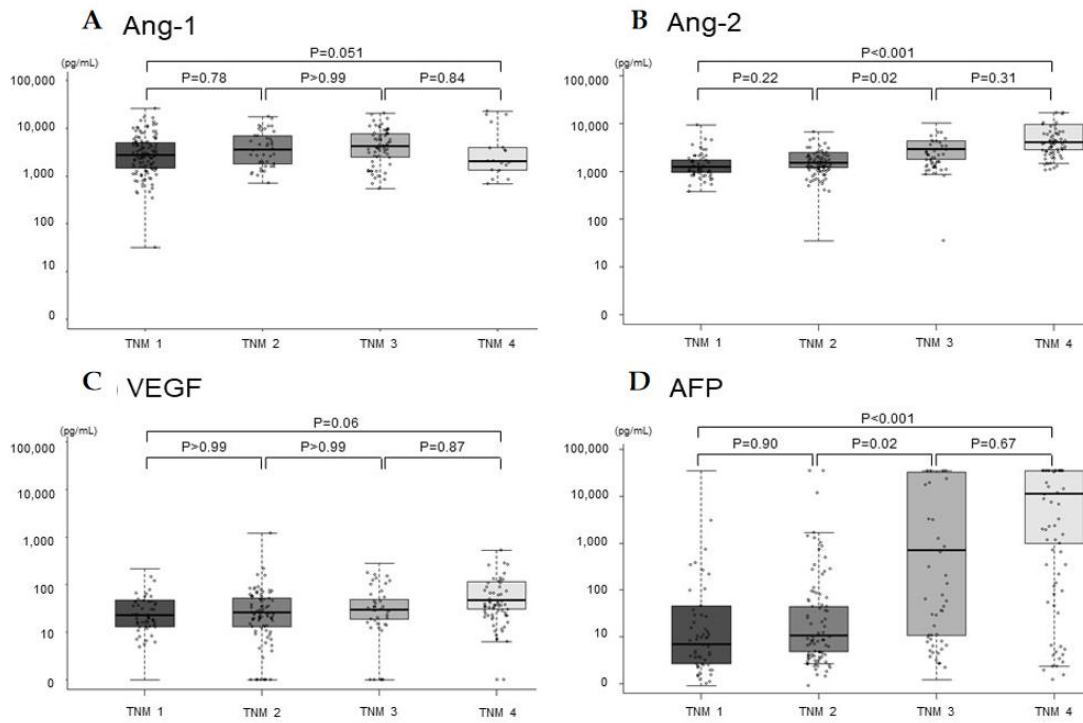
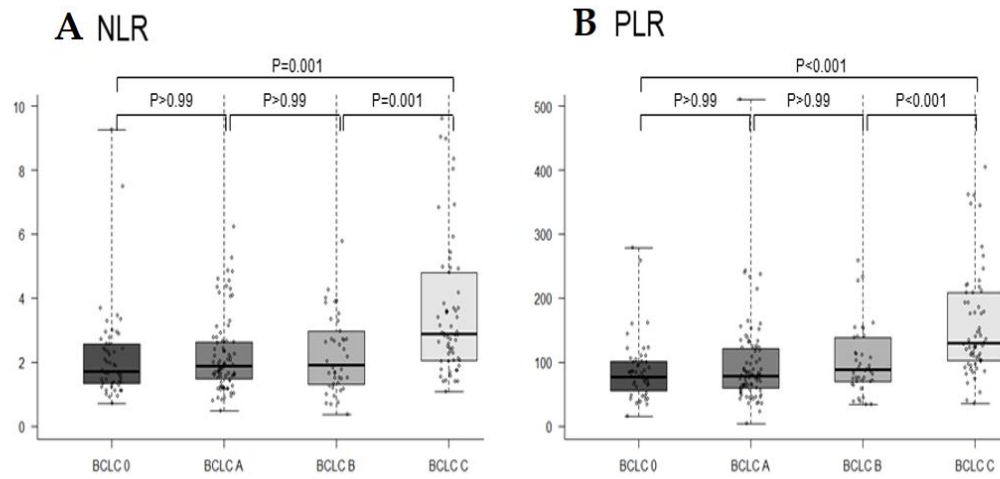


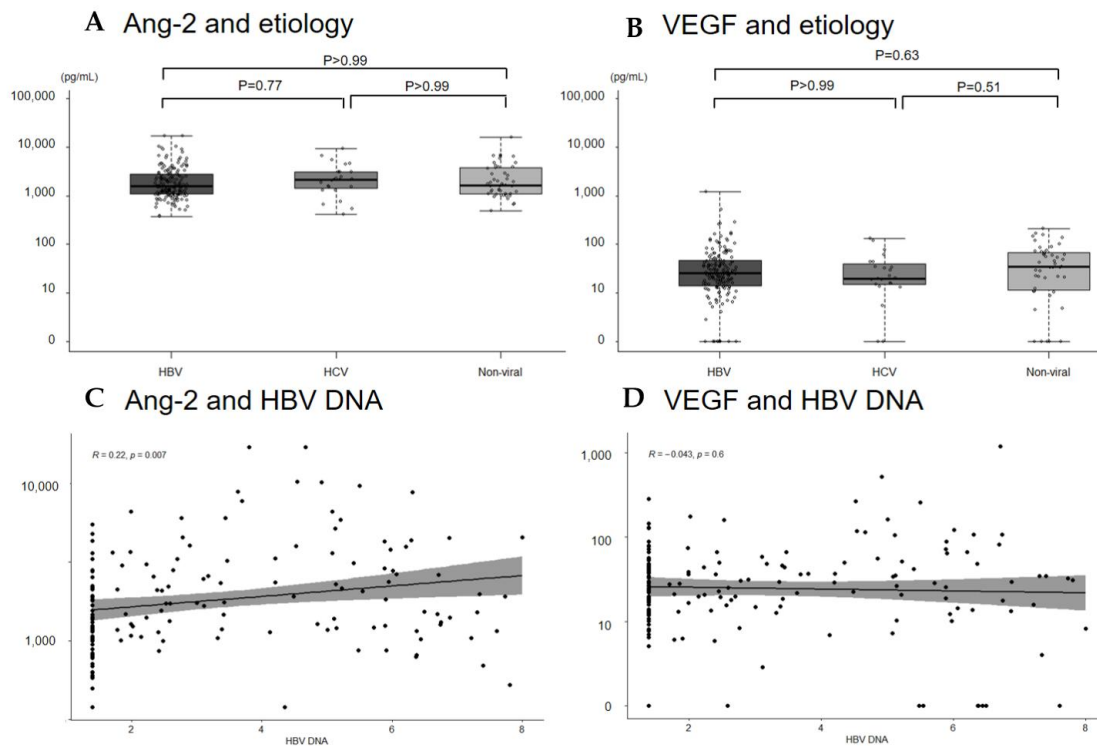
**Supplementary Figure 1 Patient flow diagrams.** ALT: Alanine aminotransferase; HCC: Hepatocellular carcinoma; HBsAg: Hepatitis B virus surface antigen; SNUBH: Seoul National University Bundang Hospital; ULN: Upper limit of normal.



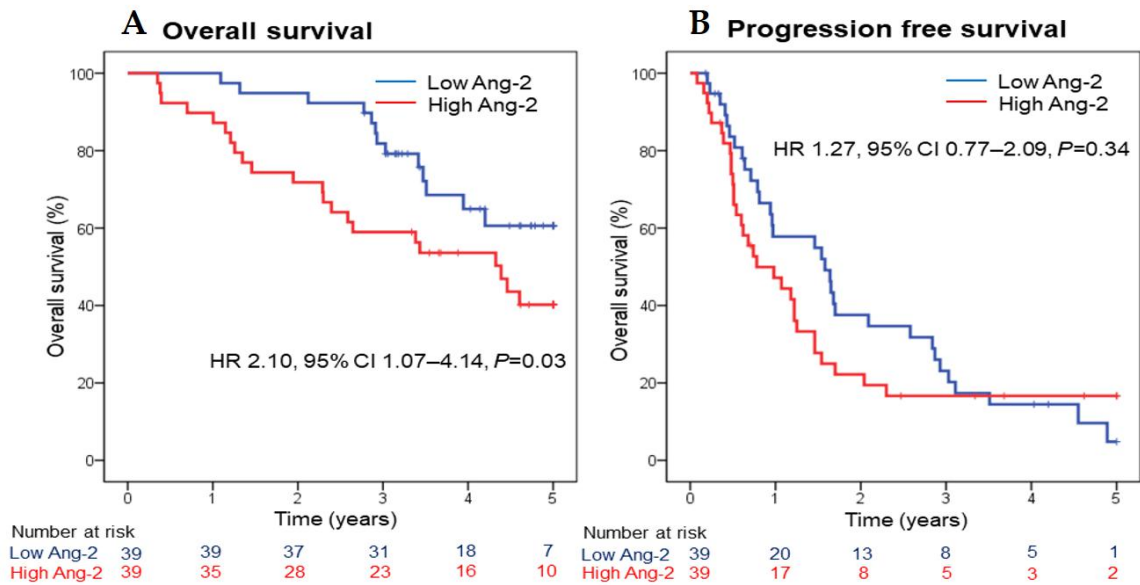
**Supplementary Figure 2 Plasma levels of angiopoietin-1, angiopoietin-2, vascular endothelial growth factor, and alpha fetoprotein in the hepatocellular carcinoma patients according to TNM stage.** AFP: Alpha-fetoprotein; Ang-1: Angiopoietin-1; Ang-2: Angiopoietin-2; VEGF: Vascular endothelial growth factor; TNM: Tumor-Node-Metastasis.



**Supplementary Figure 3 Plasma levels of neutrophil-lymphocyte ratio and platelet-lymphocyte ratio in the hepatocellular carcinoma patients according to tumor stage.** BCLC: Barcelona Clinic Liver Cancer; NLR: Neutrophil-lymphocyte ratio; PLR: Platelet-lymphocyte ratio.



**Supplementary Figure 4 Plasma levels of angiopoietin-1 and angiopoietin-2 according to etiology and hepatitis B virus DNA level.** Ang-2: Angiopoietin-1; VEGF: Vascular endothelial growth factor; HBV: Hepatitis B virus.



**Supplementary Figure 5 Kaplan-Meire curve for progression free and overall survival after propensity score matching.** Ang-2: Angiopoietin-2; HR: Hazard ratio; CI: Confidence interval.

**Supplementary Table 1 Baseline characteristics of hepatocellular carcinoma patients according to angiopoietin-2 and vascular endothelial growth factor level**

Characteristic	Low Ang-2 group (n = 121)	High Ang-2 group (n = 119)	P value	Low VEGF group (n = 121)	High VEGF group (n = 119)	P value
Age, year	62.1 ± 10.9	59.7 ± 11.4	0.10	60.0 ± 10.8	61.9 ± 11.5	0.18
Male sex	95 (78.5)	98 (82.4)	0.45	96 (79.3)	97 (81.5)	0.67
Etiology			0.45			0.37
HBV	87 (71.9)	80 (67.2)		88 (72.7)	79 (66.4)	
HCV	9 (7.4)	15 (12.6)		14 (11.6)	10 (8.4)	
Alcohol	12 (9.9)	16 (13.4)		12 (9.9)	16 (13.4)	
HBV + HCV	1 (0.8)	1 (0.8)		1 (0.8)	1 (0.8)	
Others	12 (9.9)	7 (5.9)		6 (5.0)	13 (10.9)	
ECOG performance			0.001			0.006
0	94 (77.7)	62 (52.1)		88 (72.7)	68 (57.1)	
1-2	27 (22.3)	53 (44.5)		33 (27.3)	47 (39.5)	
3	0 (0)	4 (3.4)		0 (0)	4 (3.4)	
Presence of cirrhosis	89 (73.6)	95 (79.8)	0.25	100 (82.6)	84 (70.6)	0.03
Child-Pugh class			< 0.001			0.68
A	116 (95.9)	88 (73.9)		104 (86.0)	100 (84.0)	
B	5 (4.1)	30 (25.3)		17 (14.0)	18 (15.2)	
C	0 (0)	1 (0.8)		0 (0)	1 (0.8)	
MELD	4.1 ± 5.4	5.3 ± 4.4	0.08	5.6 ± 5.0	3.8 ± 4.8	0.01
Multi-nodularity	37 (30.6)	68 (57.1)	< 0.001	47 (38.8)	58 (48.7)	0.15
Diffuse infiltrative type	4 (3.3)	37 (31.1)	< 0.001	12 (9.9)	29 (24.4)	0.003

Maximal tumor size	2.7 (1.8–4.1)	6.6 (2.7–11.0)	< 0.001	3.0 (1.8–5.3)	5.3 (2.2–10.9)	< 0.001
Bilobal involvement	22 (18.2)	52 (43.7)	< 0.001	28 (23.1)	46 (38.7)	0.009
Vascular invasion	2 (1.7)	40 (33.6)	< 0.001	15 (12.4)	27 (22.5)	0.04
Distant metastasis	1 (0.8)	16 (13.4)	< 0.001	4 (3.3)	13 (10.9)	0.02
TNM stage			< 0.001			0.04
IA	38 (31.4)	14 (11.8)		32 (26.4)	20 (16.8)	
IB	45 (37.2)	18 (15.1)		35 (28.9)	28 (23.5)	
II	23 (19.0)	19 (16.0)		23 (19.0)	19 (16.0)	
IIIA	14 (11.6)	24 (20.2)		17 (14.0)	21 (17.6)	
IIIB	0 (0)	27 (22.7)		10 (8.3)	17 (14.3)	
D	1 (0.8)	17 (14.3)		4 (3.3)	14 (11.8)	
BCLC stage			< 0.001			0.01
0	38 (31.4)	14 (11.8)		32 (26.4)	20 (16.8)	
A	55 (45.5)	26 (21.8)		46 (38.0)	35 (29.4)	
B	20 (16.5)	23 (19.3)		21 (17.4)	22 (18.5)	
C	8 (6.6)	51 (42.9)		22 (18.2)	37 (31.1)	
D	0 (0)	5 (4.2)		0 (0)	5 (4.2)	
BMI, kg/m <sup>2</sup>	24.5 ± 3.2	23.6 ± 2.8	0.02	24.2 ± 2.9	24.0 ± 3.1	0.58
AFP, ng/mL	7.7 (3.6–77.8)	73.3 (8.2–10315)	< 0.001	10.8 (3.8–89.8)	57.6 (4.2–3068.0)	0.01
PIVKA-II, mAU/mL	37 (20–136)	25 (451–10000)	< 0.001	42 (16–459)	196 (24–5899)	0.03
Ang-1, pg/mL	3002 (1680–6917)	3453 (1298–	0.93	1916 (1238–3136)	5266 (3332–9668)	< 0.001

			5898)							
Ang-2, pg/mL	1132 (868–1313)	3072 (2167–4553)	< 0.001	1552 (1142–2408)	1916 (1077–3658)	0.01				
VEGF, pg/mL	23.8 (14.5–48.5)	29.4 (13.6–55.7)	0.08	14.0 (10.8–19.8)	51.8 (36.3–85.7)	< 0.001				
WBC, ×10 <sup>3</sup> /uL	5.0 (4.0–6.5)	5.6 (3.9–6.8)	0.22	4.8 (3.7–5.9)	5.6 (4.5–7.3)	< 0.001				
Hemoglobin, g/dL	14.1 (12.9–15.0)	12.7 (11.3–14.3)	< 0.001	13.6 (12.0–14.7)	13.6 (11.8–14.9)	0.64				
Platelet count, ×10 <sup>9</sup> /uL	131 (96–170)	128 (80–211)	0.22	105 (74–150)	151 (111–208)	< 0.001				
NLR	2.2 ± 1.5	3.5 ± 4.7	0.007	2.9 ± 4.5	2.8 ± 2.1	0.92				
PLR	98.5 ± 62.8	138.3 ± 155.6	0.01	108.2 ± 140.6	128.4 ± 93.3	0.19				
Prothrombin time, INR	1.09 (1.03–1.15)	1.12 (1.05–1.23)	0.02	1.12 (1.06–1.24)	1.08 (1.02–1.13)	0.001				
AST, IU/mL	38 (27–47)	69 (41–116)	< 0.001	41 (31–58)	55 (36–95)	0.003				
ALT, IU/mL	33 (21–53)	44 (26–74)	0.002	34 (22–52)	44 (26–79)	0.001				
Albumin, g/dL	4.1 (3.9–4.4)	3.7 (3.2–4.0)	< 0.001	4.0 (3.5–4.2)	3.9 (3.5–4.3)	0.97				
Total bilirubin, mg/dL	0.7 (0.4–0.9)	0.9 (0.6–1.3)	0.07	0.8 (0.6–1.2)	0.7 (0.5–1.1)	0.86				
Creatinine, mg/dL	0.8 (0.7–1.0)	0.8 (0.7–0.9)	0.57	0.8 (0.7–1.0)	0.8 (0.7–0.9)	0.06				
Diabetes mellitus	23 (19.0)	30 (25.2)	0.25	23 (19.0)	30 (25.2)	0.25				



Hypertension	35 (28.9)	35 (29.4)	0.93	31 (25.6)	39 (32.8)	0.22
Initial treatment			< 0.001			0.03
Resection	25 (20.7)	9 (7.6)		18 (14.9)	16 (13.4)	
RFA	21 (17.4)	6 (5.0)		16 (13.2)	11 (9.2)	
TACE	74 (61.2)	92 (77.3)		86 (71.1)	80 (67.2)	
Sorafenib	0 (0)	2 (1.7)		0 (0)	2 (1.7)	
BSC	1 (0.8)	10 (8.4)		1 (0.8)	10 (8.4)	

Data presented as mean and standard deviation or median and interquartile range or frequency (*n*) and percentage where appropriate. AFP:  $\alpha$ -feto protein; ALT: Alanine aminotransferase; AST: Aspartate aminotransferase; BMI: Body mass index; BSC: Best supportive care; ECOG: Eastern Cooperative Oncology Group; HBV: Hepatitis B virus; HCC: Hepatocellular carcinoma; HCV: Hepatitis C virus; IQR: Interquartile range; MELD: Model for End-stage Liver Disease; PIVKA-II: Prothrombin-induced by vitamin K absence or antagonist-II; RFA: Radiofrequency ablation; SD: Standard deviation; TACE: Transarterial chemoembolization; VEGF: Vascular endothelial growth factor; WBC: White blood cell.

**Supplementary Table 2 Baseline characteristics of hepatocellular carcinoma patients between low- and high-angiopoietin-2 groups before and after the propensity score-matching**

Characteristic	Crude			After PS matching						
	Low group (n = 121)	Ang-2 (n = 119)	High group (n = 119)	Ang-2 (n = 119)	SMD	Low group (n = 39)	Ang-2 (n = 39)	High group (n = 39)	Ang-2 (n = 39)	SMD
Age, year	62.1 ± 10.9		59.7 ± 11.4		0.22	62.7 ± 10.5		61.0 ± 12.6		0.15
Male sex	95 (78.5)		98 (82.4)		0.10	30 (76.9)		33 (84.6)		0.19
ECOG performance					0.50					0.27
0	95 (78.5)		67 (56.3)			26 (66.7)		29 (74.4)		
1 – 2	26 (21.5)		50 (42.0)			12 (30.8)		10 (25.6)		
3	0 (0)		2 (1.7)			1 (2.6)		0 (06)		
Child-Pugh class					0.64					0.11
A	116 (95.9)		88 (73.9)			36 (92.3)		37 (94.9)		
B or C	5 (4.1)		31 (26.2)			3 (7.7)		2 (5.1)		
Maximal tumor size	2.6 (1.8–4.1)		6.7 (2.7–11.0)		1.04	3.5 (2.0–6.1)		3.0 (2.2–5.5)		0.05
Multiple tumors	37 (30.3)		68 (56.7)		0.55	18 (46.2)		18 (46.2)		< 0.01
Bilobar involvement	22 (18.0)		52 (43.3)		0.57	12 (30.8)		12 (30.8)		< 0.01
Vascular invasion	2 (1.6)		40 (33.3)		0.92	2 (5.1)		3 (7.7)		0.11
Distant metastasis	1 (0.8)		16 (13.3)		0.51	1 (2.6)		1 (2.6)		< 0.01
TNM stage					1.13					< 0.01
I / II	83 (68.6)/23 (19.0)		32 (26.9)/19 (16.0)			20 (51.3)/8 (20.5)		20 (51.3)/8 (20.5)		
III / IV	14 (11.6)/1		24 (20.2)/44			10		10 (25.6)/1(2.6)		

	(0.8)	(36.9	(25.6)/1(2.6)			
BMI, kg/m <sup>2</sup>	24.5 ± 3.2	23.6 ± 2.8	0.30	24.2 ± 3.2	24.1 ± 2.7	0.04
AFP, ng/mL	7.7 (3.6–77.8)	73.3 (8.2–10315)	0.66	20.9 (4.4–244.5)	12.0 (4.1–118.7)	0.03
Angiopoietin-1, pg/mL	3002 (1680–6917)	3453 (1298–5898)	0.01	4070 (1570–7950)	2751 (1238–4983)	0.26
Angiopoietin-2, pg/mL	1132 (868–1313)	3072 (2167–4553)	1.42	1204 (1021–1315)	2125(1898–3107)	1.88
VEGF, pg/mL	37 (20–136)	25 (451–10000)	0.23	22.1 (6.3–56.9)	19.9 (11.4–39.7)	0.05
Hemoglobin, g/dL	14.1 (12.9–15.0)	12.7 (11.3–14.3)	0.50	13.6 (11.5–14.3)	13.6 (12.2–14.7)	0.14
Platelet count, x10 <sup>9</sup> /uL	131 (96–170)	128 (80–211)	0.16	110 (76–149)	93 (71–144)	0.02
Prothrombin time, INR	1.09 (1.03–1.15)	1.12 (1.05–1.23)	0.31	1.12 (1.07–1.25)	1.12 (1.06–1.22)	0.12
ALT, IU/mL	33 (21–53)	44 (26–74)	0.42	40 (24–65)	38 (24–55)	0.21
Albumin, g/dL	4.1 (3.9–4.4)	3.7 (3.2–4.0)	0.98	3.9 (3.5–4.1)	4.0 (3.6–4.1)	0.25
Total bilirubin, mg/dL	0.7 (0.4–0.9)	0.9 (0.6–1.3)	0.24	0.8 (0.4–1.0)	0.7 (0.6–1.0)	0.01
Creatinine, mg/dL	0.8 (0.7–1.0)	0.8 (0.7–0.9)	0.07	0.9 (0.7–0.9)	0.8 (0.7–1.0)	0.08
NLR	2.2 ± 1.5	3.5 ± 4.7	0.35	2.5 ± 1.6	2.3 ± 1.9	0.11
PLR	98.5 ± 62.8	138.3 ± 155.6	0.34	95.0 ± 55.5	85.3 ± 45.9	0.19
Initial treatment			0.71			0.05
Resection	25 (20.7)	9 (7.6)		3 (7.7)	4 (2.6)	
RFA	21 (17.4)	6 (5.0)		5 (12.8)	5 (12.8)	
TACE	74 (61.2)	92 (77.3)		30 (76.9)	30 (76.9)	

Sorafenib	or 1 (0.8)	12 (10.1)	1 (2.6)	0 (0)
BSC				

Data presented as mean and standard deviation or median and interquartile range or frequency (*n*) and percentage where appropriate. AFP:  $\alpha$ -feto protein; ALT: Alanine aminotransferase; BMI: Body mass index; BSC: Base supportive care; ECOG: Eastern Cooperative Oncology Group; HCC: Hepatocellular carcinoma; HCV: Hepatitis C virus; NLR: Neutrophil-lymphocyte ratio; PLR: Platelet lymphocyte ratio; RFA: Radiofrequency ablation; TACE: Transarterial chemoembolization; VEGF: Vascular endothelial growth factor; WBC: White blood cell.