

ALL IMAGES VIDEOS

54,700 Results Any time ▾

Mesenteric ischemia: what the radiologist needs to know ...

<https://cdt.amegroups.com/article/view/21705/24963> ▾

Non-occlusive mesenteric ischemia (NOMI) is caused by intestinal hypoperfusion in the absence of vascular occlusion. NOMI constitutes 5–15% of cases of mesenteric ischemia and is associated with the highest rates of in-hospital mortality .

Cited by: 6

Author: Michael C Olson, Joel G Fletcher, Prasha...

Publish Year: 2019

Contrast-Enhanced CT for the Diagnosis of Acute Mesenteric ...

<https://www.ajronline.org/doi/10.2214/AJR.19.22625>

41. Woodhams R, Nishimaki H, Fujii K, Kakita S, Hayakawa K. Usefulness of multidetector-row CT (MDCT) for the diagnosis of non-occlusive mesenteric ischemia (NOMI): assessment of morphology and diameter of the superior mesenteric artery (SMA) on multi-planar reconstructed (MPR) images. Eur J Radiol 2010; 76:96–102 [Google Scholar]

Cited by: 2

Author: Lorenzo Garzelli, Alexandre Nuzzo, Pauli...

Publish Year: 2020

Acute Mesenteric Ischemia | Request PDF

https://www.researchgate.net/publication/258851509_Acute_Mesenteric_Ischemia

Acute mesenteric ischemia is uncommon and always occurs in the setting of preexisting comorbidities. Mortality rates remain high. The 4 major types of acute mesenteric ischemia are acute superior ...

Acute Mesenteric Ischemia: a Vascular Emergency | Request ...

<https://www.researchgate.net/publication/224847746...>

Acute mesenteric ischemia is a syndrome caused by a significant decrease in mesenteric blood flow that results in ischemia and eventual bowel necrosis, with an overall mortality rate of 40-70%.

Editorial on “enteral versus parenteral early nutrition in ...

<https://jtd.amegroups.com/article/view/20662/15898> ▾

Ryer EJ, Kalra M, Oderich GS, et al. Revascularization for acute mesenteric ischemia. J Vasc Surg 2012;55:1682-9. Leone M, Bechis C, Baumstarck K, et al. Outcome of acute mesenteric ischemia in the intensive care unit: a retrospective, multicenter study of 780 cases. Intensive Care Med 2015;41:667-76.

Mesenteric ischemia: what the radiologist needs to know ...<https://cdt.amegroups.com/article/view/21705/24903>

Non-occlusive mesenteric ischemia (NOMI) is caused by intestinal hypoperfusion in the absence of vascular occlusion. NOMI constitutes 5-15% of cases of mesenteric ischemia and is associated with t...

Cited by: 12

Author: Michael C Olson, Joel G Fletcher, Prashia...

Publish Year: 2019

Diagnostics | Free Full-Text | Large Bowel Ischemia ...<https://www.mdpi.com/2075-4418/11/6/998/html>

This condition may be observed in patients with non-occlusive mesenteric ischemia (NOMI) (before reperfusion) and in vasculopathic patients with SMA or IMA occlusion, in which the marginal artery is ...

Diagnostic Accuracy of Multidetector CT in Acute ...<https://pubs.rsna.org/doi/full/10.1148/radiol.10091938>

Secondary mesenteric ischemia is caused by nonvascular diseases, such as small bowel strangulation. Primary AMI has a vascular origin and can be stratified into different subgroups defined by cause ...

Cited by: 280

Author: Jan Merike

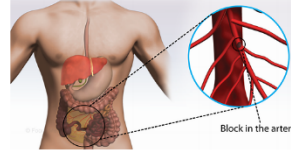
Publish Year: 2019

Multi-detector CT features of acute intestinal ischemia ...<https://www.researchgate.net/publication/262786888...>

22 Non-occlusive mesenteric ischemia (NOMI) is most common in the elderly population, and is

Mesenteric Ischemia

Medical Condition

Hardening of mesenteric arteries resulting in decreased blood flow

A condition caused by inadequate blood supply to the small intestine that leads to permanent damage of the small intestine.

Very rare (Fewer than 20,000 cases per year in US)

Requires lab test or imaging

Treatable by a medical professional

13-Jun-2021 01:22PM

5863 @iThenticate

63395-Manuscript-File-revision.docx

Quoted Excluded
Bibliography Excluded

FAQ

1%

iThenticate

Non-occlusive mesenteric ischemia: diagnostic challenges and perspectives in the era of artificial intelligence

Authors: Simon Bourcier¹, MD, PhD; Julian Klug², MD and Lee S. Nguyen³, MD, PhD

Match Overview

1

Crossref 13 words
Alexandra Heurgue, Dalia Huber, Mathias Brugel, Stéphane F. ranchi-Abella et al. "Recent (non-cirrhotic) extrahepatic ports...

<1%

2

Crossref 13 words
Gael Pilon, Amélie Le Gouge, Noelle Braké, Benoît Cyprien et al. "Impact of the route of nutrition on gut mucosa in ventilate...

<1%

3

Crossref 13 words
Simon Bourcier, Alan Combes. "The NUTRREA-2 study", The Lancet, 2019

<1%

4

Crossref 12 words
Marius Paul, Wulfen Bouguen, Stéphane Legret, Julien Charpentier et al. "Frequency, risk factors, and outcomes of non-...

<1%

Page 1 of 28

Text-Only Report

国内版 国际版

Non-occlusive mesenteric ischemia: Diagnostic challenges and pers



ALL

IMAGES

VIDEOS

12,200 Results

Any time ▾

Mesenteric ischemia: what the radiologist needs to know ...

<https://cdt.amegroups.com/article/view/21705/24963> ▾

Non-occlusive mesenteric ischemia (NOMI) is caused by intestinal hypoperfusion in the absence of vascular occlusion. NOMI constitutes 5–15% of cases of mesenteric ischemia and is associated with...

Cited by: 12

Author: Michael C Olson, Joel G Fletcher, Prasha...

Publish Year: 2019

Diagnostics | Free Full-Text | Large Bowel Ischemia ...

<https://www.mdpi.com/2075-4418/11/6/998/html> ▾

This condition may be observed in patients with non-occlusive mesenteric ischemia (NOMI) (before reperfusion) and in vasculopathic patients with SMA or IMA occlusion, in which the marginal artery is...

Diagnostic Accuracy of Multidetector CT in Acute ...

<https://pubs.rsna.org/doi/full/10.1148/radiol.10091938>

Secondary mesenteric ischemia is caused by nonvascular diseases, such as small bowel strangulation. Primary AML has a vascular origin and can be stratified into different subgroups defined b...

Cited by: 280

Author: Jan Menke

Publish Year: 2010

Articles | Radiopaedia.org

<https://radiopaedia.org/encyclopaedia/all/all?page=91> ▾

Non-occlusive mesenteric ischemia is the second most common cause of acute mesenteric ischemia, with a higher incidence in hospitalized and critical care patients. Epidemiology Non-...

Non-steroidal anti-inflammatory drug-induced diaphragm ...

<https://publishing.rcseng.ac.uk/doi/10.1308/rcsann.2016.0235>

Aug 09, 2016 · However, the CT angiogram did not show mesenteric vessel occlusion and bowel perfusion was normal. Although ischaemic enteropathy can occur without vascular changes (non-...

Author: Marielle Coolson, S.J. Leedham, S.J. ...

Publish Year: 2016

Some results are removed in response to a notice of local law requirement. For more information, please see [here](#).