

Match Overview

1	Internet 54 words crawled on 23-Nov-2020 pubs.rsna.org	3%
2	Crossref 42 words Rahul Varshney, Nalini Bansal, Archana Khanduri, Jyoti ... upta, Rahul Gupta. "Colonic Gangrene: A Sequela of Cor	2%
3	Crossref 27 words Kevin Lui, Mitchell P. Wilson, Gavin Low. "Abdominal im ... ging findings in patients with SARS-CoV-2 infection: a sco	1%
4	Internet 26 words crawled on 26-Sep-2020 yvm2020.authorea.com	1%
5	Internet 23 words crawled on 11-Apr-2021 gs.amegroups.com	1%
6	Crossref 20 words Malik Peiris. "Severe Acute Respiratory Syndrome Coro ... avirus 2 (SARS-CoV-2) (Coronaviridae)", Elsevier BV, 202	1%
7	Internet 15 words crawled on 10-Oct-2020 ejrm.springeropen.com	1%
8	Internet 10 words crawled on 24-Sep-2020 www.rsna.org	<1%

Name of Journal: *World Journal of Radiology*

Manuscript NO: 64046

Manuscript Type: MINIREVIEWS

Abdominal imaging in COVID-19

Balaban DV *et al.* Abdominal imaging in COVID-19

Daniel Vasile Balaban, Oana Madalina Baston, Mariana Jinga

Abstract

Initially thought as ²a respiratory infection, coronavirus disease-2019 (COVID-19) is now recognized as a complex ⁸disease with a wide clinical spectrum, including digestive involvement. While several studies have evaluated chest imaging findings in COVID-19, few papers have looked at the abdominal imaging features of these patients. Liver, biliary, pancreas and bowel involvement have been reported in COVID-19 infected patients. In this review we aimed to summarize ³currently available data related to

ALLIMAGESVIDEOS

10,600,000 ResultsAny time

Abdominal Imaging Findings in COVID-19: Preliminary ...
https://pubs.rsna.org/doi/10.1148/radiol.2020201908

The **coronavirus disease** 2019 (COVID-19) pandemic, caused by the severe acute respiratory syndrome coronavirus 2 (SARS-CoV-2), presents an ongoing global threat. Common clinical features reported in early confirmed infections included fever, cough, and myalgias or fatigue (1,2). As testing capacity and case numbers have increased worldwide, however, gastrointestinal (GI) symptoms, such as diarrhea, na...

Materials and MethodsResultsDiscussionAuthor Contributions

Abdominal manifestations, including gastrointestinal (GI) symptoms and liver enzyme elevation, have been reported frequently in patients with coronavirus disease 2019 (COVID-19) (1,3). However, to our knowledge, corresponding **abdominal imaging** findings have not been published. In our study, 34% of inpatients had GI symptoms at admission, which is similar to findings in recent reports (4,5). **Abdominal imaging** was performed in 33% of inpatients with COVID-19, and 17% of patients had cross-sectional im...

See more on pubs.rsna.org

Cited by: 137Author: Rajesh Bhayana, Avik Som, Matthew D. Li, ...
Publish Year: 2020

[PDF] Abdominal Imaging Findings in COVID-19: Preliminary ...
https://pubs.rsna.org/doi/pdf/10.1148/radiol.2020201908

May 11, 2020 · Several reports have evaluated **chest imaging** find-ings in patients with **COVID-19**, leading to a greater understanding of pathogenesis in the lung (15,16). Despite the widening recognition of **abdominal** mani-festations, to our knowledge, corresponding **abdominal imaging** findings have not yet been reported. **Imaging**

Images of Abdominal Imaging in COVID-19
bing.com/images



See all images

Cross-Sectional Abdominal Imaging Findings in Patients ...
https://pubmed.ncbi.nlm.nih.gov/32905406

Salient **imaging** findings and medical records were reviewed. Results A total of 10 COVID-19-positive patients (seven males and three females) of ages ranging from 21-75 years underwent cross-sectional **abdominopelvic imaging**. Nine of the 10 patients demonstrated typical lung base findings associated with **COVID-19** on both CT and MRI.

Cited by: 4Author: Kaustubh Shiralkar, Naga Chinapuvvula, Da...
Publish Year: 2020

Gastrointestinal tract imaging findings in confirmed COVID ...
https://www.ncbi.nlm.nih.gov/pmc/articles/PMC7873518

Feb 10, 2021 · Thirty-five **abdominal CT imaging** studies were done for 30 confirmed **COVID 19** patients showing positive GI **imaging** findings, 21 of them were males (70%), and 9 were females (30%). Twenty-one patients were admitted to the ICU (70%), and 9 patients were isolated in the medical ward (30%).

Abdominal imaging reveals bowel abnormalities in COVID-19 ...
https://medcaldialogues.in/radiology/news/abdominal-imaging-reveals-bowel... ▾

May 17, 2020 · Several studies have evaluated the **chest imaging** findings in COVID-19, which helped improve understanding of how the disease affects the lungs. More recently, reports have documented that gastrointestinal symptoms, liver injury, and vascular findings are common in these patients. However, **abdominal imaging** findings have not yet been widely reported.

Estimated Reading Time: 4 mins

Bowel Abnormalities, Cholestasis in COVID-19 Radiologic ...
https://advances.massgeneral.org/radiology/journal.aspx?id=1658 ▾

Aug 28, 2020 · Key findings This study correlated **abdominal imaging** findings with **abdominal** signs and symptoms in 412 adult inpatients with **COVID-19**, of whom 136 were admitted to the ICU 33% of the patients had **abdominal imaging** and 17% had cross-sectional **imaging** 31% of 42 CT scans showed bowel wall abnormalities

Estimated Reading Time: 2 mins

COVID-19: First bowel imaging study implicates blood clots
https://www.medicalnewstoday.com/articles/covid-19... ▾

May 14, 2020 · **COVID-19**: First **bowel imaging** study implicates blood clots People with **COVID-19** often experience gastrointestinal symptoms. An analysis of **abdominal** scans suggests that blood clots in ...

Estimated Reading Time: 4 mins

COVID-19 presenting as severe, persistent abdominal pain ...
https://pubmed.ncbi.nlm.nih.gov/32546557

COVID-19 presenting as severe, persistent **abdominal** pain and causing late respiratory compromise in a 33-year-old man BMJ Case Rep . 2020 Jun 16;13(6):e236030. doi: 10.1136/bcr-2020-236030.

Author: Sarah Catherine Walpole, Rebecca McH... Publish Year: 2020

COVID-19: Gastrointestinal symptoms and complications ...
https://www.uptodate.com/contents/covid-19... ▾

Mar 24, 2021 · INTRODUCTION — In February 2020, the World Health Organization designated the disease COVID-19, which stands for "coronavirus disease 2019," a pandemic. The virus that causes COVID-19 is the severe acute respiratory syndrome coronavirus 2 (SARS-CoV-2). COVID-19 primarily manifests as a lung infection, with most symptomatic patients presenting with fever and respiratory ...

ALL

IMAGES

VIDEOS

MAPS

NEWS

SHOPPING

Show language tabs

9,970,000 Results

Any time ▾

Abdominal Imaging Findings in COVID-19: Preliminary ...

<https://pubs.rsna.org/doi/10.1148/radiol.2020201908>

The **coronavirus disease** 2019 (COVID-19) pandemic, caused by the severe acute respiratory syndrome coronavirus 2 (SARS-CoV-2), presents an ongoing global threat. Common clinical features reported in early confirmed infections included fever, cough, and myalgias or fatigue (1,2). As testing capacity and case numbers have increased worldwide, however, gastrointestinal (GI) symptoms, such as diarrhea, na...

Materials and Methods

Results

Discussion

Author Contributions

Abdominal manifestations, including gastrointestinal (GI) symptoms and liver enzyme elevation, have been reported frequently in patients with coronavirus disease 2019 (COVID-19) (1,3). However, to our knowledge, corresponding **abdominal imaging** findings have not been published. In our study, 34% of inpatients had GI symptoms at admission, which is similar to findings in recent reports (4,5). **Abdominal imaging** was performed in 33% of inpatients with COVID-19, and 17% of patients had cross-sectional im...

[See more on pubs.rsna.org](https://pubs.rsna.org)

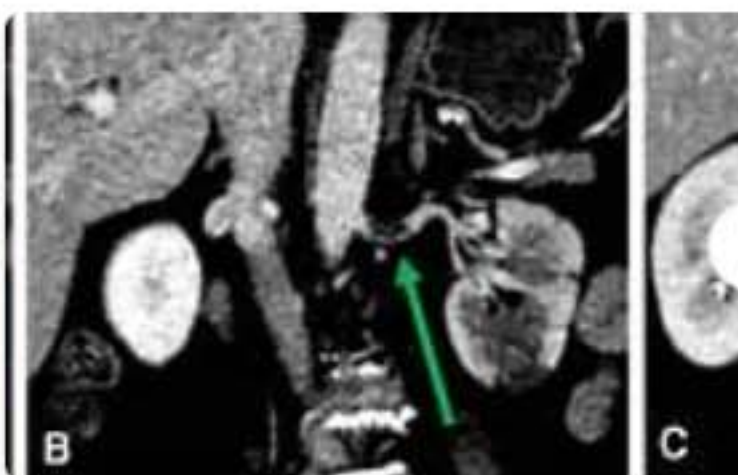
Cited by: 142

Author: Rajesh Bhayana, Avik Som, Matthew D. Li, ...

Publish Year: 2020

Images of Abdominal Imaging in COVID-19

bing.com/images



See all images >