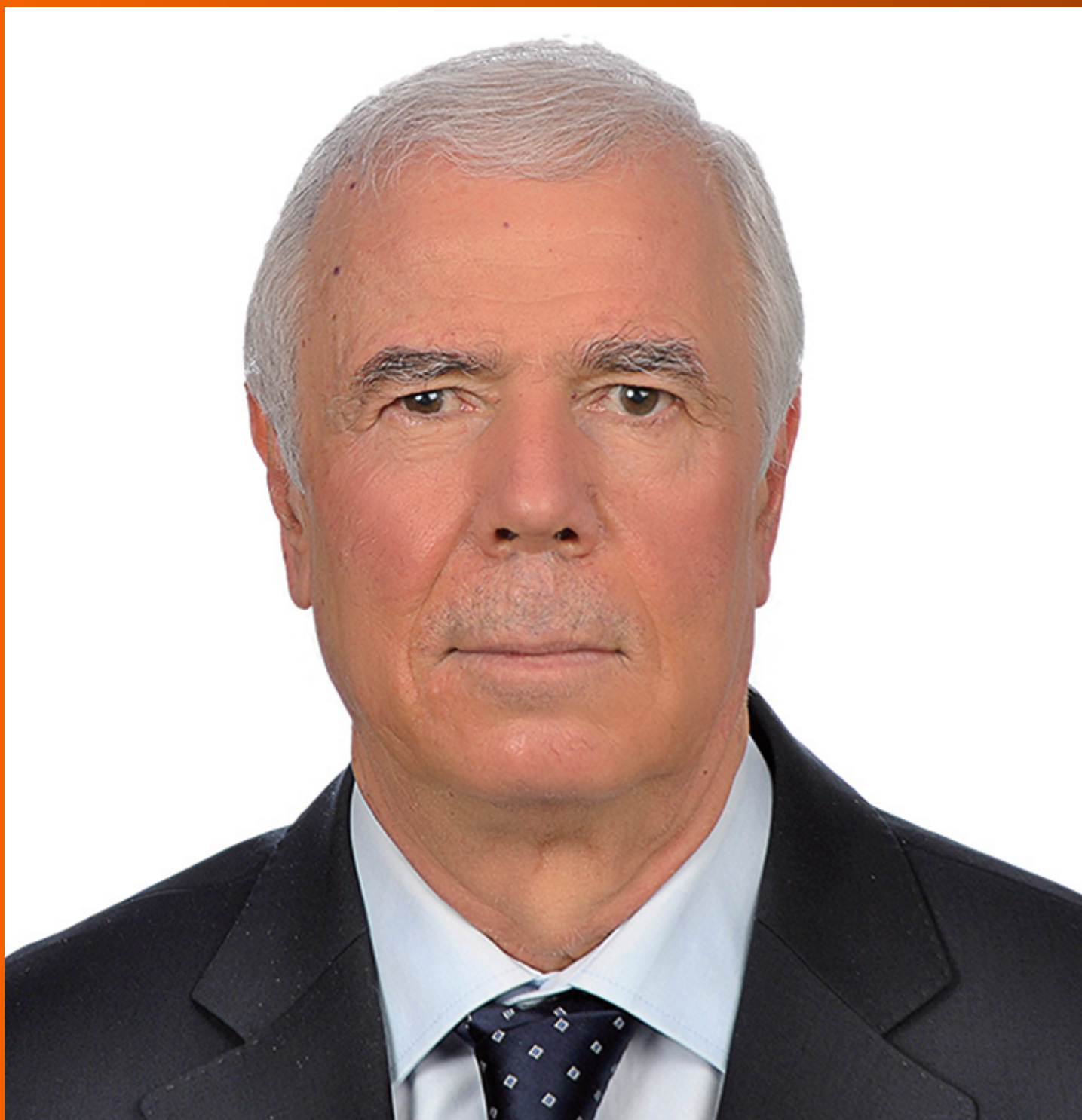


World Journal of *Gastrointestinal Surgery*

World J Gastrointest Surg 2021 November 27; 13(11): 1293-1522



Contents

Monthly Volume 13 Number 11 November 27, 2021

REVIEW

- 1293** Acute appendicitis—advances and controversies
Teng TZJ, Thong XR, Lau KY, Balasubramaniam S, Shelat VG

MINIREVIEWS

- 1315** Application and progress of medical imaging in total mesopancreas excision for pancreatic head carcinoma
Feng P, Cheng B, Wang ZD, Liu JG, Fan W, Liu H, Qi CY, Pan JJ
- 1327** Retrorectal tumors: A challenge for the surgeons
Balci B, Yildiz A, Leventoglu S, Montes B
- 1338** Surgical ampullectomy: A comprehensive review
Scroggie DL, Mavroeidis VK
- 1351** Is surgery the best treatment for elderly gastric cancer patients?
Kawaguchi Y, Akaike H, Shoda K, Furuya S, Hosomura N, Amemiya H, Kawaida H, Kono H, Ichikawa D

ORIGINAL ARTICLE

Case Control Study

- 1361** Nomogram for predicting chylous ascites after right colectomy
Zheng HD, Liu YR, Chen ZZ, Sun YF, Xu CH, Xu JH
- 1372** Comparison of safety, efficacy, and long-term follow-up between “one-step” and “step-up” approaches for infected pancreatic necrosis
Zheng Z, Lu JD, Ding YX, Guo YL, Mei WT, Qu YX, Cao F, Li F

Retrospective Study

- 1390** Risk of station 12a lymph node metastasis in patients with lower-third gastric cancer
Dong YP, Cai FL, Wu ZZ, Wang PL, Yang Y, Guo SW, Zhao ZZ, Zhao FC, Liang H, Deng JY
- 1405** Choice of operative method for pancreaticojejunostomy and a multivariable study of pancreatic leakage in pancreaticoduodenectomy
Liang H, Wu JG, Wang F, Chen BX, Zou ST, Wang C, Luo SW
- 1414** Laparoscopic vs open surgery in ileostomy reversal in Crohn’s disease: A retrospective study
Wan J, Yuan XQ, Wu TQ, Yang MQ, Wu XC, Gao RY, Yin L, Chen CQ

- 1423** Preoperative serum carbohydrate antigen 19-9 levels predict early recurrence after the resection of early-stage pancreatic ductal adenocarcinoma

Hong S, Song KB, Hwang DW, Lee JH, Lee W, Jun E, Kwon J, Park Y, Park SY, Kim N, Shin D, Kim H, Sung M, Ryu Y, Kim SC

- 1436** Patients with *Clostridium difficile* infection and prior appendectomy may be prone to worse outcomes

Shaikh DH, Patel H, Munshi R, Sun H, Meher Shahi S, Baiomi A, Alemam A, Pirzada U, Nawaz I, Naher K, Hanumanthu S, Nayudu S

Observational Study

- 1448** Novel roles of lipopolysaccharide and TLR4/NF- κ B signaling pathway in inflammatory response to liver injury in Budd-Chiari syndrome

Li J, Chen XM, Zhou CZ, Fang WW, Lv WF, Cheng DL

- 1463** Long-term survival of patients with stage II and III gastric cancer who underwent gastrectomy with inadequate nodal assessment

Desiderio J, Sagnotta A, Terrenato I, Garofoli E, Mosillo C, Trastulli S, Arteritano F, Tozzi F, D'Andrea V, Fong Y, Woo Y, Bracarda S, Parisi A

- 1484** Defecation disorders are crucial sequelae that impairs the quality of life of patients after conventional gastrectomy

Nakada K, Ikeda M, Takahashi M, Kinami S, Yoshida M, Uenosono Y, Terashima M, Oshio A, Kodera Y

SYSTEMATIC REVIEWS

- 1497** Is omentectomy necessary in the treatment of benign or malignant abdominal pathologies? A systematic review

Atay A, Dilek ON

SCIENTOMETRICS

- 1509** Global trends in research related to sleeve gastrectomy: A bibliometric and visualized study

Barqawi A, Abushamma FA, Akkawi M, Al-Jabi SW, Shahwan MJ, Jairoun AA, Zyoud SH

ABOUT COVER

Editorial Board Member of *World Journal of Gastrointestinal Surgery*, Ali Coskun, MD, Associate Professor, Doctor, Department of General Surgery, Izmir Bozyaka Training and Research Hospital, Izmir 35380, Turkey. dralicoskun3564@hotmail.com

AIMS AND SCOPE

The primary aim of *World Journal of Gastrointestinal Surgery* (WJGS, *World J Gastrointest Surg*) is to provide scholars and readers from various fields of gastrointestinal surgery with a platform to publish high-quality basic and clinical research articles and communicate their research findings online.

WJGS mainly publishes articles reporting research results and findings obtained in the field of gastrointestinal surgery and covering a wide range of topics including biliary tract surgical procedures, biliopancreatic diversion, colectomy, esophagectomy, esophagostomy, pancreas transplantation, and pancreatectomy, etc.

INDEXING/ABSTRACTING

The WJGS is now abstracted and indexed in Science Citation Index Expanded (SCIE, also known as SciSearch®), Current Contents/Clinical Medicine, Journal Citation Reports/Science Edition, PubMed, and PubMed Central. The 2021 edition of Journal Citation Reports® cites the 2020 impact factor (IF) for WJGS as 2.582; IF without journal self cites: 2.564; 5-year IF: 3.378; Journal Citation Indicator: 0.53; Ranking: 97 among 212 journals in surgery; Quartile category: Q2; Ranking: 73 among 92 journals in gastroenterology and hepatology; and Quartile category: Q4.

RESPONSIBLE EDITORS FOR THIS ISSUE

Production Editor: Rui-Rui Wu, Production Department Director: Xiang Li, Editorial Office Director: Ya-Juan Ma.

NAME OF JOURNAL

World Journal of Gastrointestinal Surgery

ISSN

ISSN 1948-9366 (online)

LAUNCH DATE

November 30, 2009

FREQUENCY

Monthly

EDITORS-IN-CHIEF

Shu-You Peng, Varut Lohsiriwat, Jin Gu

EDITORIAL BOARD MEMBERS

<https://www.wjgnet.com/1948-9366/editorialboard.htm>

PUBLICATION DATE

November 27, 2021

COPYRIGHT

© 2021 Baishideng Publishing Group Inc

INSTRUCTIONS TO AUTHORS

<https://www.wjgnet.com/bpg/gerinfo/204>

GUIDELINES FOR ETHICS DOCUMENTS

<https://www.wjgnet.com/bpg/gerinfo/287>

GUIDELINES FOR NON-NATIVE SPEAKERS OF ENGLISH

<https://www.wjgnet.com/bpg/gerinfo/240>

PUBLICATION ETHICS

<https://www.wjgnet.com/bpg/gerinfo/288>

PUBLICATION MISCONDUCT

<https://www.wjgnet.com/bpg/gerinfo/208>

ARTICLE PROCESSING CHARGE

<https://www.wjgnet.com/bpg/gerinfo/242>

STEPS FOR SUBMITTING MANUSCRIPTS

<https://www.wjgnet.com/bpg/gerinfo/239>

ONLINE SUBMISSION

<https://www.f6publishing.com>



Application and progress of medical imaging in total mesopancreas excision for pancreatic head carcinoma

Pei Feng, Bo Cheng, Zhen-Dong Wang, Jun-Gui Liu, Wei Fan, Heng Liu, Chao-Ying Qi, Jing-Jing Pan

ORCID number: Pei Feng 0000-0002-9182-9871; Bo Cheng 0000-0003-2683-9878; Zhen-Dong Wang 0000-0003-0982-2169; Jun-Gui Liu 0000-0003-2831-8734; Wei Fan 0000-0002-7154-5652; Heng Liu 0000-0002-1238-0683; Chao-Ying Qi 0000-0002-7473-1610; Jing-Jing Pan 0000-0002-8516-2599.

Author contributions: Feng P, Cheng B, Wang ZD, Liu JG and Pan JJ contributed guarantors of integrity of entire study; Cheng B and Pan JJ contributed study design; all authors contributed data acquisition and interpretation; Feng P, Cheng B, Wang ZD and Pan JJ contributed manuscript drafting and revision; all authors contributed literature research; all authors contributed approval of final version of submitted manuscript; all authors agree to ensure any questions related to the work are appropriately resolved; Feng P, Wang ZD, Liu JG and Pan JJ contributed manuscript editing.

Conflict-of-interest statement: Authors declare no conflict of interests for this article.

Country/Territory of origin: China

Specialty type: Gastroenterology and hepatology

Provenance and peer review: Invited article; Externally peer

Pei Feng, Wei Fan, Heng Liu, Chao-Ying Qi, Jing-Jing Pan, Department of Radiology, PLA Rocket Force Characteristic Medical Center, Beijing 100088, China

Bo Cheng, Department of Pathology, PLA Rocket Force Characteristic Medical Center, Beijing 100088, China

Zhen-Dong Wang, Department of Ultrasound, Beijing Sihui Hospital of Traditional Chinese Medicine, Beijing 100022, China

Jun-Gui Liu, Department of Hepatobiliary Surgery, PLA Rocket Force Characteristic Medical Center, Beijing 100088, China

Corresponding author: Jing-Jing Pan, MD, Associate Chief Physician, Department of Radiology, PLA Rocket Force Characteristic Medical Center, No. 16 Xinwai Street, Beijing 100088, China. panjingjing3969@sina.com

Abstract

Pancreatic head carcinoma (PHC) is one of the common gastrointestinal malignancies with a high morbidity and poor prognosis. At present, radical surgery is still the curative treatment for PHC. However, in clinical practice, the actual R0 resection rate, the local recurrence rate, and the prognosis of PHC are unsatisfactory. Therefore, the concept of total mesopancreas excision (TMpE) is proposed to achieve R0 resection. Although there have various controversies and discussions on the definition, the range of excision, and clinical prognosis of TMpE, the concept of TMpE can effectively increase the R0 resection rate, reduce the local recurrence rate, and improve the prognosis of PHC. Imaging is of importance in preoperative examination for PHC; however, traditional imaging assessment of PHC does not focus on mesopancreas. This review discusses the application of medical imaging in TMpE for PHC, to provide more accurate preoperative evaluation, range of excision, and more valuable postoperative follow-up evaluation for TMpE through imaging. It is believed that with further extensive research and exploratory application of TMpE for PHC, large-sample and multicenter studies will be realized, thus providing reliable evidence for imaging evaluation.

Key Words: Pancreatic head carcinoma; Mesopancreas; Total mesopancreas excision; Imaging; Computed tomography; Magnetic resonance imaging

reviewed.

Peer-review report's scientific quality classification

Grade A (Excellent): 0
Grade B (Very good): B
Grade C (Good): C
Grade D (Fair): 0
Grade E (Poor): 0

Open-Access: This article is an open-access article that was selected by an in-house editor and fully peer-reviewed by external reviewers. It is distributed in accordance with the Creative Commons Attribution NonCommercial (CC BY-NC 4.0) license, which permits others to distribute, remix, adapt, build upon this work non-commercially, and license their derivative works on different terms, provided the original work is properly cited and the use is non-commercial. See: <http://creativecommons.org/licenses/by-nc/4.0/>

Received: February 13, 2021

Peer-review started: February 13, 2021

First decision: May 4, 2021

Revised: May 11, 2021

Accepted: August 19, 2021

Article in press: August 19, 2021

Published online: November 27, 2021

P-Reviewer: Karamarkovic AR, Tomizawa M

S-Editor: Gao CC

L-Editor: Kerr C

P-Editor: Li JH



©The Author(s) 2021. Published by Baishideng Publishing Group Inc. All rights reserved.

Core tip: As a new concept of radical treatment for pancreatic head carcinoma, total mesopancreas excision requires removal of all tissues (including nerves, capillaries and lymph nodes) in the mesopancreas and has potential for achievement of R0 resection. Correspondingly, imaging evaluation should include all of the anatomical structures within the mesopancreas to achieve precise preoperative evaluation for surgical resection and meet the needs of postoperative follow-up.

Citation: Feng P, Cheng B, Wang ZD, Liu JG, Fan W, Liu H, Qi CY, Pan JJ. Application and progress of medical imaging in total mesopancreas excision for pancreatic head carcinoma. *World J Gastrointest Surg* 2021; 13(11): 1315-1326

URL: <https://www.wjgnet.com/1948-9366/full/v13/i11/1315.htm>

DOI: <https://dx.doi.org/10.4240/wjgs.v13.i11.1315>

INTRODUCTION

Pancreatic carcinoma (PC) is a highly malignant tumor of the digestive system with an increasing incidence and poor prognosis. Pancreatic head carcinoma (PHC) accounts for approximately 90% of all pancreatic malignancies, with a 5-year survival rate ranging from 6% to 20% [1,2]. Because of the posterior location, symptoms of PHC are usually insidious and it is difficult to diagnose in the early stage, thus losing the best opportunity for surgery or increasing its risk. It has been reported that approximately 20%–86% of PC patients do not reach curative surgical (R0) resection after surgical treatment (most common with a positive tumor margin), which adversely affects the prognosis of the patients [3-7].

PATHOGENESIS AND PATHOGENIC FACTORS OF PC

To date, the specific pathogenesis of PC has not been clear. At present, it is certain that the occurrence and development of PC are the result of a combined effect of lifestyle and the internal and external environments. A large number of clinical and epidemiological studies have confirmed that the risk factors for PC include smoking, chronic diabetes and obesity [8-10]. High alcohol consumption, diet and a family history are also associated with PC [11]. Japan's 2016 version of pancreatic ductal adenocarcinoma (PDAC) clinical guidelines [12] pointed out that risk factors for PDAC include a family history of PC, hereditary PC syndrome, pancreatic complications of diabetes/chronic pancreatitis/intraductal papillary mucinous neoplasm/pancreatic cysts/obesity, an unhealthy lifestyle (smoking, excessive alcohol intake) and occupational factors.

TREATMENT AND PROGNOSIS OF PHC

Surgical resection is still the most important and the only curative treatment for PHC. The prognosis of patients with surgically resected PHC is significantly better than that of unresectable PHC [13]. The National Comprehensive Cancer Network (NCCN) guidelines [14] recommend neoadjuvant therapy only for borderline resectable PC. Currently, pancreaticoduodenectomy (PD) is the standard surgical procedure for radical treatment of PHC, and the long-term recurrence rate and long-term survival rate of patients with PD are mainly dependent on radical R0 resection [15,16]. Even for patients unable to achieve an R0 resection, R1 resection can still improve the prognosis and achieve an improved quality of life. In the past 10 years, the perioperative mortality of pancreatic cancer has been reduced to 3%. Moreover, the expanded surgical indications for locally advanced tumors have also increased the 5-year overall survival (OS) rate close to 30%.

With the development of laparoscopic technology, the safety and feasibility of laparoscopic resection for pancreatic body and tail tumors has been confirmed, and laparoscopic resection has become the first choice for patients with resectable benign

or low-grade malignant tumors in the pancreatic body and tail[17]. For pancreatic head cancer, due to the technical difficulty of the operation, the application of laparoscopic PD (LPD) is still hard to promote widely[18-20]. For LPD, R0 resection is the only way for patients with PHC to obtain long-term survival. Whether R0 resection can be achieved is the key factor for the prognosis of PHC[21]. Unfortunately, it has been reported that 20%–86% of patients with PHC undergoing surgical resection do not achieve R0 resection[22,23]; most of which are related to the insufficient removal of retroperitoneal tissue mainly concentrated in the retropancreatic tissue space, a well-known anatomical space recognized as the mesopancreas[16]. Recently, R1 resection in many PHCs has been believed to be caused by incomplete resection of the mesopancreas. Accordingly, the concept of total mesopancreas excision (TMpE) has been proposed, which is suggested to increase the R0 resection rate of pancreaticoduodenal surgery[24-26].

CONCEPT OF MESOPANCREAS AND SURGICAL PROGRESS OF TMpE

The pancreas has always been considered an extraperitoneal organ. In 2007, Gockel *et al*[27] proposed the concept of the mesopancreas and TMpE by analogizing total mesorectal excision based on the autopsy results of five corpses. According to this concept, TMpE requires resection of the entire pancreatic tumor and the peripancreatic lymph nodes and adipose tissue layer *en bloc* to achieve a negative retroperitoneal margin and to improve the R0 resection rate and the prognosis of the patients. Gockel *et al*[27] considered the mesopancreas to be the fibrous connective tissue between the pancreas neck and the mesenteric blood vessels. Although the exact anatomical boundary was not described, the mesopancreas was confirmed to be an anatomical region containing nerves, blood vessels, and lymphoid tissues, the most likely metastatic region of pancreatic cancer. In contrast, Agrawal *et al*[28] pointed out that although loose areolar tissue, adipose tissue, peripheral nerves, a nerve plexus, lymphatic ducts and capillaries could be found extending from the head, neck and uncinate process of the pancreas to the aortocaval groove in the retropancreatic tissue in 20 patients with autopsy, no fibrous sheath or fascia was detected around these structures. Therefore, the concept of the mesopancreas could not be confirmed anatomically. However, Popescu and Dumitrascu[29] insisted that even without a complete fascial structure, the mesopancreas could still be considered an anatomical structure. To date, there has been no consensus on the existence of a mesopancreas and whether it could be called a mesostructure. Adham and Singhirunnusorn[30] specifically described the superior, inferior, anterior and posterior resection margins of TMpE and characterized them as an inverted triangle, the mesopancreas triangle, whose anatomical boundaries are represented by a base lying on the posterior surface of the superior mesenteric vein (SMV) and portal vein (PV), a summit lying on the anterior surface of the aorta between the celiac trunk and superior mesenteric artery (SMA) origin, and limited on each side by the right semicircumferences of the celiac trunk and SMA plexus (Figure 1). Adham and Singhirunnusorn[30] emphasized thorough removal of all tissues in this area to achieve R0 resection (Figure 2). Kawabata *et al*[31] proposed the concept of the mesopancreatoduodenum, which consisted of a cluster of soft connective tissues along the inferior pancreaticoduodenal artery (IPDA) and the first jejuna artery (FJA). The mesoduodenum (fed by the IPDA) and the jejunal mesentery (dominated by the FJA) were demonstrated to form a common mesentery named the mesopancreatoduodenum in the resected specimens. Correspondingly, the concept of total mesopancreatoduodenum excision with an expanded range relative to the aforementioned mesopancreas was put forward to emphasize the circumferential resection of SMA. In view of the unclear mesopancreas boundary and various modes of local pancreatic invasion, Peparini *et al*[32] proposed that extending the resection as much as possible (including dissection of the para-aortic lymph nodes such as 16a2 and 16bl) should be implemented. In terms of pancreaticoduodenal resection, Wu *et al*[33] divided the mesopancreas at the head of the pancreas into the anterior and posterior parts, which mainly refers to the lymphatic connective tissues that attach to the anterior side of the abdominal aorta and surround the SMA and SMV and the celiac trunk. According to the Japan Pancreas Society General Rules for the Study of Pancreatic Cancer (7th edition)[34], the mesopancreas is defined as the pancreatic head plexus, which is more in compliance with anatomy. The existence and range of the mesopancreas is still controversial.

To date, the safety and effectiveness of TMpE have not been thoroughly discussed. Adham and Singhirunnusorn[30] found that TMpE showed no significance in terms of

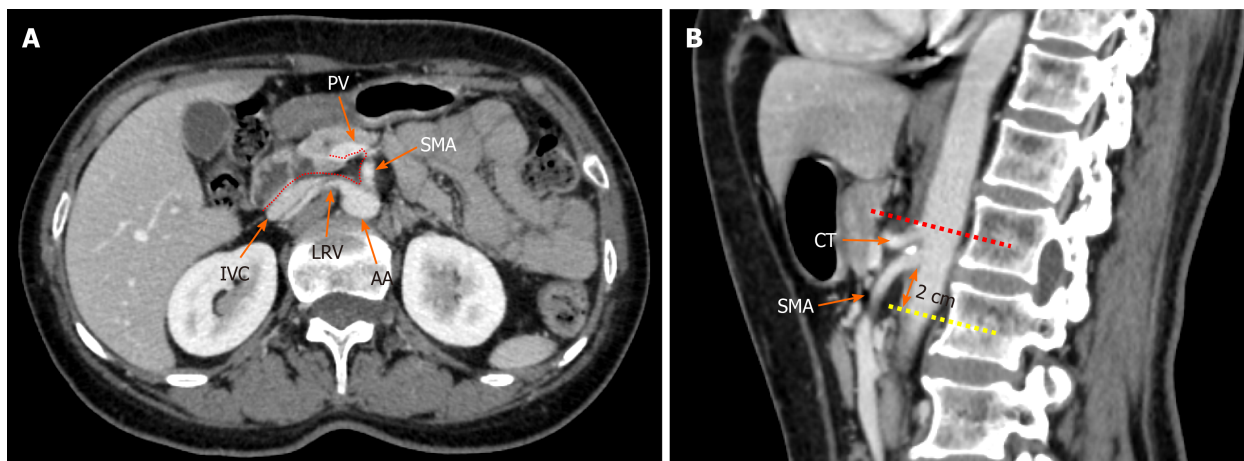


Figure 1 Radiological depiction of the mesopancreas in computed tomography. A: The dotted line outlines the boundary of the mesopancreas, a region identified as the retro pancreatic retro portal tissue; B: The inferior boundary of the mesopancreas is 2 cm below the origin of superior mesenteric artery. PV: Portal vein; SMA: Superior mesenteric artery; LRV: Left renal vein; IVC: Inferior vena cava; AA: Aorta artery; CT: Celiac trunk.

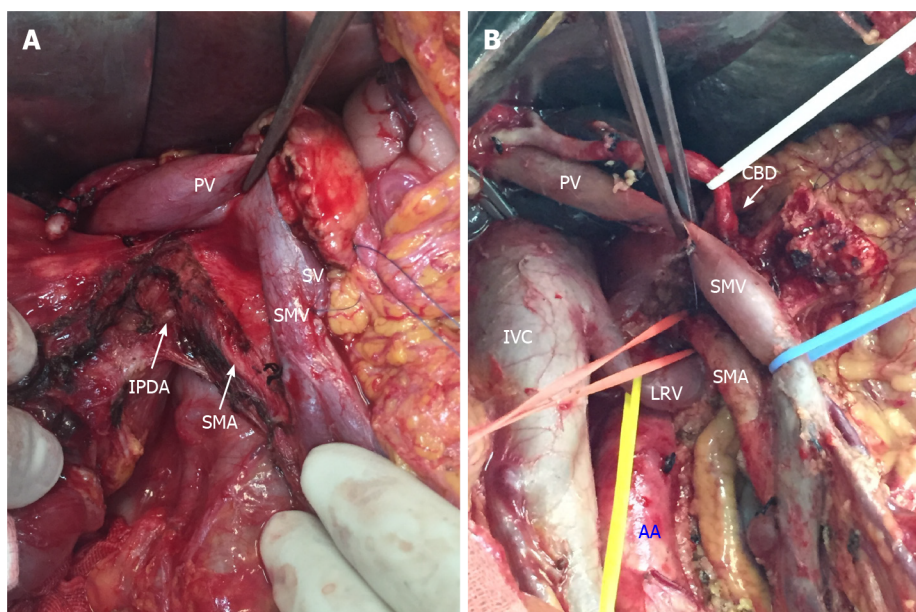


Figure 2 Key steps of total mesopancreas excision. A: Dissection of the right semi-circumference of the superior mesenteric artery and celiac trunk; B: Clearance of the retropancreatic retroportal space (mesopancreas triangular). PV: Portal vein; SV: Splenic vein; SMV: Superior mesenteric vein; SMA: Superior mesenteric artery; IPDA: Inferior pancreaticoduodenal arteries; IVC: Inferior vena cava; LRV: Left renal vein; AA: Aorta artery; CBD: Common bile duct.

operating time, intraoperative blood loss, incidence of postoperative complications, length of hospitalization or perioperative mortality compared with other surgical methods for PHC. Meanwhile, postoperative pathology confirmed a positive mesopancreas invasion by PHC rate of 23%, a median lymph node dissection of 24%, and an overall R0 resection rate of 80.7% for PHC after TMpE. Therefore, TMpE is believed to be an effective surgical method to reduce the positive rate of the posterior peritoneal resection margin and increase the R0 resection rate of PHC. Kawabata *et al* [31] compared the surgical methods of TMpE in 14 PHC patients with standard PD performed in 25 patients during the same period and achieved a higher number of lymph node dissections (26 *vs* 18, $P = 0.027$) and a higher R0 resection rate (93% *vs* 60%, $P = 0.019$) in the TMpE group. Some studies have also demonstrated that TMpE could significantly increase the R0 resection rate of pancreaticoduodenal surgery for PHC[29,30,35-38].

Known as the most common sites for invasion and metastasis of PHC, the region posterior to the head of the pancreas, the SMV, posterior PV, SMA, the right semi-circumference of the celiac trunk, and the anterior and right sides of the abdominal aorta are the most likely sites of residual tumor and local recurrence after surgical resection,

making it the key site of current radical resection of PHC. In fact, because the mesopancreas is included in the resection range of lymph node dissection for PHC, TMpE does not contradict traditional lymph node dissection and just differs in the emphasis of the importance of resection of the region near the posterior head of the pancreas. Currently, the absence of a definite anatomical boundary for the soft tissue posterior to the head of the pancreas brings challenges to precise resection of the mesopancreas in TMpE. This uncertainty may also increase the heterogeneity among studies and affect the evaluation of TMpE.

To our knowledge, until now, only a few studies have compared TMpE with traditional PD, and these studies mainly focused on OS and disease-free survival (DFS)[39–41]. Kurosaki *et al*[41] reported similar short-term survival but prolonged 3-year survival rates in patients with successful TMpE. Quero *et al*[43] also reported benefits in terms of DFS for TMpE. However, some studies found that TMpE did not influence short-term outcomes[35,39,42]. Quero *et al*[43] also reported a similar estimated 5-year OS between these two techniques, even though a slight advantage was observed in the TMpE group.

IMAGING STUDIES ON PHC AND THE MESOPANCREAS

As a tumor with rapid progression, the early diagnosis of PHC has many difficulties. Approximately 80%–85% of patients are diagnosed with locally advanced tumors or distant metastasis, and only 15%–20% of patients are suitable for surgical resection [44]. Enhanced computed tomography (CT) and magnetic resonance imaging (MRI) are currently the most commonly used examination methods for the diagnosis of PHC.

Typical imaging manifestations of PHC

Consistent with the microscopic pathological characteristics of PC, mixed tumor cells and a large amount of interstitial fibrosis with an irregular proportion, the direct signs of typical PHC include an isodense or slightly low-density mass in the pancreatic head area on noncontrast CT images and an avascular tumor with a lower density than normal pancreatic parenchyma in contrast imaging (Figure 3). On MRI, most tumors show a low signal on T1-weighted imaging (WI), an equal/low/slightly higher signal on T2WI, and a slightly higher signal on diffusion-weighted imaging (DWI). The signal intensity of most PHCs is lower than that of the pancreatic parenchyma in the early stage of enhancement and becomes iso-signal intensity in the later stage (Figure 4). Indirect signs of PHC include changes in the contour of the pancreas, parenchymal atrophy of the pancreatic body and tail, pancreatic and bile duct truncation sign, double duct sign[45] (Figure 4D), and secondary retention cyst.

It should be noted that 10%–14% of tumors on multidetector CT (MDCT) are isodense on both noncontrast and contrast scans[46], which is more common in histopathologically highly differentiated tumors. Early PHC is usually well differentiated and presents as an isodense tumor. Approximately 88% of isodense PCs with a diameter < 2 cm are accompanied by indirect signs, with an incidence of pancreatic duct truncation sign, double duct sign, and pancreatic atrophy of 59%, 63% and 21% [47]. Therefore, indirect signs are important for the early diagnosis of PHC, especially in cases without a definite tumor, and further examination should be performed to avoid a missed diagnosis. MRI using multiple sequences can significantly improve the sensitivity and specificity of the early diagnosis of pancreatic cancer[48,49].

Imaging evaluation of resectability of PHC

At present, surgical resection is the only possible radical curative treatment for PHC. However, only 15%–20% of patients with PHC are suitable for surgery due to local involvement or distant metastases. Therefore, accurate judgment of the resectability of PHC is of importance when selecting treatment options to avoid unnecessary surgery. Currently, the standard evaluation for the resectability of pancreatic cancer is the NCCN Clinical Practice Guidelines for Pancreatic Cancer (2017, 1st edition), including the evaluation of the peripancreatic artery, vein, pancreatic head, body and tail cancers and the contact surface between the tumor and blood vessels. Moreover, with a combination of tumor location, the type of involved blood vessels and the contact angle, tumors can be divided into resectable pancreatic cancer (RPC), borderline RPC (BRPC), locally advanced pancreatic cancer (LAPC) and metastatic PC[50]. Meanwhile, the importance of enhanced CT and MRI in the evaluation of PC has also been highlighted. High-quality images are especially significant for accurately assessing the relationship between pancreatic cancer and adjacent blood vessels, which is of guiding



Figure 3 Typical CT features of pancreatic head carcinoma in a 73-year-old male patient. A: On noncontrast CT imaging a slightly low-density mass (arrow) in the pancreatic head area was identified; B–D: On contrast CT images, the tumor shows an avascular tumor with a lower density than normal pancreatic parenchyma on arterial phase (B), venous phase (C), and delay phase (D). CT: Computed tomography.

significance for the assessment of the resectability of PC and the selection of treatment options.

Unfortunately, there are still some problems with the NCCN guidelines. First, Hong *et al*[51] evaluated 371 PC patients with preoperative CT according to the NCCN guidelines and found that tumors with a diameter > 4 cm and tumor contact with PV were high risk factors for R1/2 resection margins. For those 104 patients diagnosed with BRPC by preoperative CT, 47 patients were pathologically confirmed as R1/2 margins after surgery. Therefore, the NCCN guidelines based on anatomical standards have significant limitations in the evaluation of resectability and cannot promise benefit from surgical treatment in some patients. Second, according to the 8th edition of the American Joint Cancer Committee in 2018, PC is distinguished as T1, T2 and T3 stages according to the largest tumor diameter and T4 stage (with involvement of celiac trunk, SMA, and/or the common hepatic artery, regardless of tumor size). This new T staging system undoubtedly promises more objectivity and reproducibility for MDCT, but it also brings challenges to radiologists. The sensitivity of MDCT in T staging differs in tumors of different sizes, with a sensitivity of 90%–98% for tumors with a diameter > 2 cm and 60%–77% for smaller tumors[52]. Therefore, difficulties still exist in the detection and further staging of T1 tumors for MDCT. MRI provides multisequence imaging, which is better than MDCT in the diagnosis of small PHCs. Third, the N staging system recommended in the NCCN guidelines is based on the number of metastatic lymph nodes: N0 (no regional lymph node metastasis); N1 (1–3 regional lymph node metastases); and N2 (> 4 lymph node metastases). Nevertheless, there are still some limitations in the imaging diagnosis of metastatic lymph nodes. As metastatic lymph nodes have no obvious correlation with tumor size or the tumor T stage, it is difficult to identify metastatic lymph nodes based only on morphological changes and distinguish them from inflammatory hyperplasia. As a functional imaging technology that can provide not only anatomical but also functional/metabolic features, MR-DWI may help detect metastatic lymph nodes combined with the apparent diffusion coefficient[53].

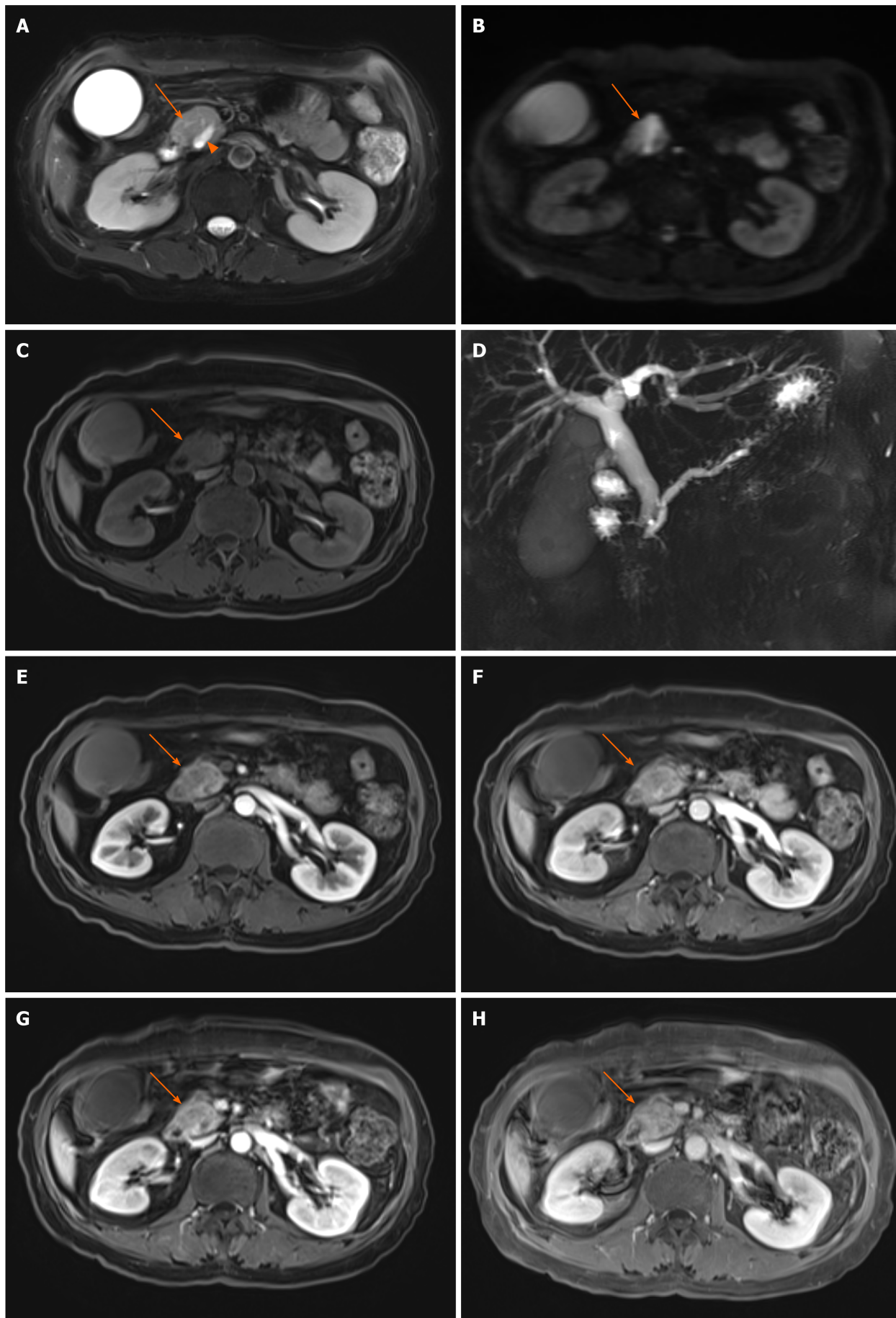


Figure 4 Typical magnetic resonance features of pancreatic head carcinoma in a 57-year-old female patient. A–C: Swollen pancreatic head

(arrow) with slightly higher signal on T2-weighted imaging (WI) (A) and diffusion-weighted imaging (B), and low signal on T1WI (C) was detected; D: Notes that the dilation of pancreatic duct (arrow head) and double duct sign on magnetic resonance cholangiopancreatography; E–H: After administration of contrast agent, the tumor shows a progressive enhancement pattern similar to computed tomography on early arterial phase (E), late arterial phase (F), venous phase (G), and delay phase (H).

Positron emission tomography–CT has also been reported to be able to enable a qualitative diagnosis based on the uptake of ^{18}F -fluorodeoxyglucose in the lymph nodes with better sensitivity and specificity than MDCT[54]. In addition, the use of MR-targeted lymphatic imaging technology and radiomics may also help improve the accuracy of the diagnosis of metastatic lymph nodes in the future. Despite these developments in imaging modalities, the absence of pathological sampling standards for peripancreatic lymph nodes and the lack of a unified definition of regional lymph nodes make it difficult to establish a point-to-point correspondence between pathologically positive lymph nodes and positive lymph nodes on images, resulting in a disconnect among preoperative imaging evaluations, surgical lymph node dissections, and pathological assessments. In conclusion, although MDCT or MRI can show the tumor morphology, adjacent vascular invasion, lymph node and distant metastasis well, there are still some limitations in the current imaging assessment based on the TNM staging system, which may affect the treatment options and prognosis of patients to some extent.

Application status of imaging in TMpE

With the novel conception of the mesopancreas and advances in TMpE, all of the structures in the mesopancreas should be accurately preoperatively evaluated. However, the assessment of the resectability of PHC in previous studies has mainly focused on the size of the tumor, invasion of the peripheral blood vessels, and the presence of lymph node metastasis and distant metastasis. Current studies on TMpE are mostly focused on surgical methods, treatment effects, and patient prognosis.

In addition, with the proposal of a mesopancreas and developments in TMpE, peripancreatic vessel invasion is no longer an absolute contraindication for radical resection of PHC; therefore, the evaluation principles of preoperative imaging need to be changed correspondingly. Consistent with the anatomical concept of the mesopancreas, preoperative imaging evaluation of PHC should include all of the nerves, lymphatic vessels, and fatty tissues in the mesopancreas instead of only evaluating masses, vascular invasion, lymph nodes and distant metastasis. Wu[55] found an important anatomical level for TMpE, the posterior pancreatic space, containing a large number of nerves, lymphatic vessels, adipose tissue, and dense fibrous connective tissue surrounding the CA and the SMA within it. As a particularly important anatomical region for the occurrence of lymphatic and nerve metastasis, preoperative imaging evaluation should pay more attention to the posterior pancreatic space and the structures around the CA and SMA to achieve R0 resection. Liang *et al* [56] proposed 3D visualization technology in TMpE, which could help make more accurate preoperative assessments and select reasonable surgery approaches, thus, increasing the R0 resection rate of PHC.

However, there are many controversies regarding the scope and boundary of the mesopancreas because of the absence of a definite anatomical fascial structure. A definitely complete posterior capsule posterior to the head of the pancreas and the duodenum was found in a recent study[57], which has brought new challenges to clinical imaging. Similar to the mesorectum, which could be identified as low signal intensity on MRI, the mesopancreas should also be detectable. Unfortunately, whether the mesopancreas could be identified by imaging is questionable and requires extensive research with a comprehensive comparison of gross anatomy, surgery, pathology, and imaging. Furthermore, perineuronal invasion is characteristic of pancreatic cancer, generally first invading the intrapancreatic nerves and then to the nerve plexus outside the pancreas by spreading along the nerve bundles. It has been reported that a longer survival period could only be achieved in patients with peripancreatic nerve resection[58,59]; therefore, the evaluation of preoperative peripheral nerve invasion and postoperative resection margin is of great importance for the efficacy of TMpE. However, until now, neither CT nor MRI has been able to clearly visualize the nerve plexus of the pancreas. Further improvements in imaging technologies should be developed to achieve precise assessment of the perineuronal invasion of PHC.

CONCLUSION

Generally, as a new concept of radical treatment for PHC, TMpE requires removal of all tissues (including nerves, capillaries and lymph nodes) in the mesopancreas and has potential in the achievement of R0 resection. Correspondingly, imaging evaluation should include all of the anatomical structures within the mesopancreas to achieve precise preoperative evaluation for surgical resection and meet the needs of postoperative follow-up.

REFERENCES

- 1 **Veite-Schmahl MJ**, Rivers AC, Regan DP, Kennedy MA. The Mouse Model of Pancreatic Cancer Atlas (MMPCA) for classification of pancreatic cancer lesions: A large histological investigation of the Ptf1aCre/+;LSL-KrasG12D/+ transgenic mouse model of pancreatic cancer. *PLoS One* 2017; **12**: e0187552 [PMID: 29121082 DOI: 10.1371/journal.pone.0187552]
- 2 **Xiao Y**, Xie Z, Shao Z, Chen W, Xie H, Qin G, Zhao N. Prognostic value of postdiagnostic inflammation-based scores in short-term overall survival of advanced pancreatic ductal adenocarcinoma patients. *Medicine (Baltimore)* 2017; **96**: e9247 [PMID: 29390358 DOI: 10.1097/MD.0000000000009247]
- 3 **Wanebo HJ**, Glicksman AS, Vezeridis MP, Clark J, Tibbetts L, Koness RJ, Levy A. Preoperative chemotherapy, radiotherapy, and surgical resection of locally advanced pancreatic cancer. *Arch Surg* 2000; **135**: 81-7; discussion 88 [PMID: 10636353 DOI: 10.1001/archsurg.135.1.81]
- 4 **Verbeke CS**, Leitch D, Menon KV, McMahon MJ, Guillou PJ, Anthoney A. Redefining the R1 resection in pancreatic cancer. *Br J Surg* 2006; **93**: 1232-1237 [PMID: 16804874 DOI: 10.1002/bjs.5397]
- 5 **Weitz J**, Rahbari N, Koch M, Büchler MW. The "artery first" approach for resection of pancreatic head cancer. *J Am Coll Surg* 2010; **210**: e1-e4 [PMID: 20113929 DOI: 10.1016/j.jamcollsurg.2009.10.019]
- 6 **Liu XF**, Tang K, Sun FB, Sui LL, Xu G. Partial Resection of the Pancreatic Head and Duodenum for Management of Carcinoma of the Ampulla of Vater: A Case Report. *Anticancer Res* 2016; **36**: 1319-1324 [PMID: 26977032]
- 7 **Strobel O**, Hank T, Hinz U, Bergmann F, Schneider L, Springfield C, Jäger D, Schirmacher P, Hackert T, Büchler MW. Pancreatic Cancer Surgery: The New R-status Counts. *Ann Surg* 2017; **265**: 565-573 [PMID: 27918310 DOI: 10.1097/SLA.0000000000001731]
- 8 **Arriaga ME**, Vajdic CM, MacInnis RJ, Canfell K, Magliano DJ, Shaw JE, Byles JE, Giles GG, Taylor AW, Gill TK, Hirani V, Cumming RG, Mitchell RP, Banks E, Marker J, Adelstein BA, Laaksonen MA. The burden of pancreatic cancer in Australia attributable to smoking. *Med J Aust* 2019; **210**: 213-220 [PMID: 30656698 DOI: 10.5694/mja2.12108]
- 9 **Kanno A**, Masamune A, Hanada K, Maguchi H, Shimizu Y, Ueki T, Hasebe O, Ohtsuka T, Nakamura M, Takenaka M, Kitano M, Kikuyama M, Gabata T, Yoshida K, Sasaki T, Serikawa M, Furukawa T, Yanagisawa A, Shimosegawa T; Japan Study Group on the Early Detection of Pancreatic Cancer (JEDPAC). Multicenter study of early pancreatic cancer in Japan. *Pancreatol* 2018; **18**: 61-67 [PMID: 29170051 DOI: 10.1016/j.pan.2017.11.007]
- 10 **Tirkes T**, Jeon CY, Li L, Joon AY, Seltman TA, Sankar M, Persohn SA, Territo PR. Association of Pancreatic Steatosis With Chronic Pancreatitis, Obesity, and Type 2 Diabetes Mellitus. *Pancreas* 2019; **48**: 420-426 [PMID: 30747825 DOI: 10.1097/MPA.0000000000001252]
- 11 **Naudin S**, Viallon V, Hashim D, Freisling H, Jenab M, Weiderpass E, Perrier F, McKenzie F, Bueno-de-Mesquita HB, Olsen A, Tjønneland A, Dahm CC, Overvad K, Mancini FR, Rebours V, Boutron-Ruault MC, Katzke V, Kaaks R, Bergmann M, Boeing H, Peppas E, Karakatsani A, Trichopoulos A, Pala V, Masala G, Panico S, Tumino R, Sacerdote C, May AM, van Gils CH, Rylander C, Borch KB, Chirlaque López MD, Sánchez MJ, Ardanaz E, Quirós JR, Amiano Exezarreta P, Sund M, Drake I, Regnér S, Travis RC, Wareham N, Aune D, Riboli E, Gunter MJ, Duell EJ, Brennan P, Ferrari P. Healthy lifestyle and the risk of pancreatic cancer in the EPIC study. *Eur J Epidemiol* 2020; **35**: 975-986 [PMID: 31564045 DOI: 10.1007/s10654-019-00559-6]
- 12 **Yamaguchi K**, Okusaka T, Shimizu K, Furuse J, Ito Y, Hanada K, Shimosegawa T, Okazaki K; Committee for Revision of Clinical Guidelines for Pancreatic Cancer of the Japan Pancreas Society. Clinical Practice Guidelines for Pancreatic Cancer 2016 From the Japan Pancreas Society: A Synopsis. *Pancreas* 2017; **46**: 595-604 [PMID: 28426492 DOI: 10.1097/MPA.0000000000000816]
- 13 **Liu MQ**, Ji SR, Xu XW, Yu XR. Advances in basic research, clinical diagnosis and treatment of pancreatic cancer in 2019. *Zhongguo Aizheng Zazhi* 2020; **30**: 1-10 [DOI: 10.19401/j.cnki.1007-3639.2020.01.001]
- 14 **Tempero MA**, Malafa MP, Chiorean EG, Czado B, Scaife C, Narang AK, Fountzilas C, Wolpin BM, Al-Hawary M, Asbun H, Behrman SW, Benson AB, Binder E, Cardin DB, Cha C, Chung V, Dillhoff M, Dotan E, Ferrone CR, Fisher G, Hardacre J, Hawkins WG, Ko AH, LoConte N, Lowy AM, Moravsek C, Nakakura EK, O'Reilly EM, Obando J, Reddy S, Thayer S, Wolff RA, Burns JL, Zuccarino-Catania G. Pancreatic Adenocarcinoma, Version 1.2019. *J Natl Compr Canc Netw* 2019; **17**: 202-210 [PMID: 30865919 DOI: 10.6004/jnccn.2019.0014]

- 15 **Peery AF**, Crockett SD, Barritt AS, Dellon ES, Eluri S, Gangarosa LM, Jensen ET, Lund JL, Pasricha S, Runge T, Schmidt M, Shaheen NJ, Sandler RS. Burden of Gastrointestinal, Liver, and Pancreatic Diseases in the United States. *Gastroenterology* 2015; **149**: 1731-1741.e3 [PMID: [26327134](#) DOI: [10.1053/j.gastro.2015.08.045](#)]
- 16 **Wagner M**, Redaelli C, Lietz M, Seiler CA, Friess H, Büchler MW. Curative resection is the single most important factor determining outcome in patients with pancreatic adenocarcinoma. *Br J Surg* 2004; **91**: 586-594 [PMID: [15122610](#) DOI: [10.1002/bjs.4484](#)]
- 17 **Venkat R**, Edil BH, Schulick RD, Lidor AO, Makary MA, Wolfgang CL. Laparoscopic distal pancreatectomy is associated with significantly less overall morbidity compared to the open technique: a systematic review and meta-analysis. *Ann Surg* 2012; **255**: 1048-1059 [PMID: [22511003](#) DOI: [10.1097/SLA.0b013e318251ee09](#)]
- 18 **Correa-Gallego C**, Dinkelspiel HE, Sulimanoff I, Fisher S, Viñuela EF, Kingham TP, Fong Y, DeMatteo RP, D'Angelica MI, Jarnagin WR, Allen PJ. Minimally-invasive vs open pancreaticoduodenectomy: systematic review and meta-analysis. *J Am Coll Surg* 2014; **218**: 129-139 [PMID: [24275074](#) DOI: [10.1016/j.jamcollsurg.2013.09.005](#)]
- 19 **Liu M**, Ji S, Xu W, Liu W, Qin Y, Hu Q, Sun Q, Zhang Z, Yu X, Xu X. Laparoscopic pancreaticoduodenectomy: are the best times coming? *World J Surg Oncol* 2019; **17**: 81 [PMID: [31077200](#) DOI: [10.1186/s12957-019-1624-6](#)]
- 20 **Stauffer JA**, Coppola A, Villacreses D, Mody K, Johnson E, Li Z, Asbun HJ. Laparoscopic vs open pancreaticoduodenectomy for pancreatic adenocarcinoma: long-term results at a single institution. *Surg Endosc* 2017; **31**: 2233-2241 [PMID: [27604369](#) DOI: [10.1007/s00464-016-5222-1](#)]
- 21 **Croome KP**, Farnell MB, Que FG, Reid-Lombardo KM, Truty MJ, Nagorney DM, Kendrick ML. Total laparoscopic pancreaticoduodenectomy for pancreatic ductal adenocarcinoma: oncologic advantages over open approaches? *Ann Surg* 2014; **260**: 633-8; discussion 638 [PMID: [25203880](#) DOI: [10.1097/SLA.0000000000000937](#)]
- 22 **Schietroma M**, Pessia B, Carlei F, Amicucci G. Intestinal permeability changes, systemic endotoxemia, inflammatory serum markers and sepsis after Whipple's operation for carcinoma of the pancreas head. *Pancreatol* 2017; **17**: 839-846 [PMID: [28803860](#) DOI: [10.1016/j.pan.2017.07.190](#)]
- 23 **Rau BM**, Moritz K, Schuschab S, Alsfasser G, Prall F, Klar E. R1 resection in pancreatic cancer has significant impact on long-term outcome in standardized pathology modified for routine use. *Surgery* 2012; **152**: S103-S111 [PMID: [22766366](#) DOI: [10.1016/j.surg.2012.05.015](#)]
- 24 **De Reuver PR**, Mittal A, Neale M, Gill AJ, Samra JS. Extended pancreatoduodenectomy as defined by the International Study Group for Pancreatic Surgery is associated with worse survival but not with increased morbidity. *Surgery* 2015; **158**: 183-190 [PMID: [25920909](#) DOI: [10.1016/j.surg.2015.03.015](#)]
- 25 **Demir IE**, Jäger C, Schlitter AM, Konukiewicz B, Stecher L, Schorn S, Tiefrunk E, Scheufele F, Calavrezos L, Schirren R, Esposito I, Weichert W, Friess H, Ceyhan GO. R0 Versus R1 Resection Matters after Pancreaticoduodenectomy, and Less after Distal or Total Pancreatectomy for Pancreatic Cancer. *Ann Surg* 2018; **268**: 1058-1068 [PMID: [28692477](#) DOI: [10.1097/SLA.0000000000002345](#)]
- 26 **Ghaneh P**, Kleeff J, Halloran CM, Raraty M, Jackson R, Melling J, Jones O, Palmer DH, Cox TF, Smith CJ, O'Reilly DA, Izbicki JR, Scarfe AG, Valle JW, McDonald AC, Carter R, Tebbutt NC, Goldstein D, Padbury R, Shannon J, Dervenis C, Glimelius B, Deakin M, Anthony A, Lerch MM, Mayerle J, Oláh A, Rawcliffe CL, Campbell F, Strobel O, Büchler MW, Neoptolemos JP; European Study Group for Pancreatic Cancer. The Impact of Positive Resection Margins on Survival and Recurrence Following Resection and Adjuvant Chemotherapy for Pancreatic Ductal Adenocarcinoma. *Ann Surg* 2019; **269**: 520-529 [PMID: [29068800](#) DOI: [10.1097/SLA.0000000000002557](#)]
- 27 **Gockel I**, Domeyer M, Wolloscheck T, Konerding MA, Junginger T. Resection of the mesopancreas (RMP): a new surgical classification of a known anatomical space. *World J Surg Oncol* 2007; **5**: 44 [PMID: [17459163](#) DOI: [10.1186/1477-7819-5-44](#)]
- 28 **Agrawal MK**, Thakur DS, Somashekar U, Chandrakar SK, Sharma D. Mesopancreas: myth or reality? *JOP* 2010; **11**: 230-233 [PMID: [20442517](#)]
- 29 **Popescu I**, Dumitrascu T. Total meso-pancreas excision: key point of resection in pancreatic head adenocarcinoma. *Hepatogastroenterology* 2011; **58**: 202-207 [PMID: [21510315](#)]
- 30 **Adham M**, Singhirunusorn J. Surgical technique and results of total mesopancreas excision (TMpE) in pancreatic tumors. *Eur J Surg Oncol* 2012; **38**: 340-345 [PMID: [22264964](#) DOI: [10.1016/j.ejso.2011.12.015](#)]
- 31 **Kawabata Y**, Tanaka T, Nishi T, Monma H, Yano S, Tajima Y. Appraisal of a total meso-pancreatoduodenectomy with pancreaticoduodenectomy for pancreatic head carcinoma. *Eur J Surg Oncol* 2012; **38**: 574-579 [PMID: [22575529](#) DOI: [10.1016/j.ejso.2012.04.007](#)]
- 32 **Peparini N**, Caronna R, Chirletti P. The "meso" of the rectum and the "meso" of the pancreas: similar terms but distinct concepts in surgical oncology. *Hepatobiliary Pancreat Dis Int* 2015; **14**: 548-551 [PMID: [26459733](#) DOI: [10.1016/s1499-3872\(15\)60417-9](#)]
- 33 **Wu WG**, Guan WB, Lu YC, Zhu YD, Liang HB, Wu XS, Li ML, Wang XA, Wang LF, Liu YB. Surgical anatomy and histological observation of pancreatic mesangial membrane. *Zhongguo Shiyong Waike Zazhi* 2017; **37**: 774-777 [DOI: [10.19538/j.cjps.issn1005-2208.2017.07.19](#)]
- 34 **Sharma D**, Isaji S. Mesopancreas is a misnomer: time to correct the nomenclature. *J Hepatobiliary Pancreat Sci* 2016; **23**: 745-749 [PMID: [27734589](#) DOI: [10.1002/jhbp.402](#)]
- 35 **Du L**, Xu XJ, Geng C, Nie XH, Wang XY. Efficacy of pancreaticoduodenectomy combined with portal vein/superior mesenteric vein resection for pancreatic head cancer. *Zhongguo Putong Waike*

- Zazhi 2016; **25**: 381-386
- 36 **Fan W**, Xue Q, Chen SK, Wu XC. Clinical effect of pylorus-preserving pancreaticoduodenectomy. *Chongqing Yixue* 2015; **44**: 226-228
 - 37 **Liu YB**, Quan ZW, Peng SY. The idea and controversy of total mesopancreas excision (TMpE) in pancreatic head tumors. *Zhongguo Shiyong Waike Zazhi* 2013; **33**: 856-858
 - 38 **Wu WG**, Wu XS, Li ML, Yang GH, Ding QC, Wong H, Ding Q, Zhang L, Cao Y, Bao RF, Shu YJ, Lu JH, Gong W, Shi WB, Gu J, Wang XF, Liu YB, Quan ZW, Peng SX. Total mesopancreas excision (TMpE) in pancreatic head tumors with 75 cases report. *Zhongguo Shiyong Waike Zazhi* 2013; **33**: 859-862
 - 39 **Aimoto T**, Mizutani S, Kawano Y, Matsushita A, Yamashita N, Suzuki H, Uchida E. Left posterior approach pancreaticoduodenectomy with total mesopancreas excision and circumferential lymphadenectomy around the superior mesenteric artery for pancreatic head carcinoma. *J Nippon Med Sch* 2013; **80**: 438-445 [PMID: 24419715 DOI: 10.1272/jnms.80.438]
 - 40 **Dumitrascu T**, David L, Popescu I. Posterior vs standard approach in pancreatoduodenectomy: a case-match study. *Langenbecks Arch Surg* 2010; **395**: 677-684 [PMID: 19418065 DOI: 10.1007/s00423-009-0499-3]
 - 41 **Kurosaki I**, Minagawa M, Takano K, Takizawa K, Hatakeyama K. Left posterior approach to the superior mesenteric vascular pedicle in pancreaticoduodenectomy for cancer of the pancreatic head. *JOP* 2011; **12**: 220-229 [PMID: 21546696]
 - 42 **Kawabata Y**, Hayashi H, Ishikawa N, Tajima Y. Total meso-pancreatoduodenum excision with pancreaticoduodenectomy in lower biliary tract cancer. *Langenbecks Arch Surg* 2016; **401**: 463-469 [PMID: 27102325 DOI: 10.1007/s00423-016-1435-y]
 - 43 **Quero G**, Fiorillo C, Menghi R, Cina C, Galiandro F, Longo F, Sofo F, Rosa F, Tortorelli AP, Giustiniani MC, Inzani F, Alfieri S. Total mesopancreas excision for periampullary malignancy: a single-center propensity score-matched comparison of long-term outcomes. *Langenbecks Arch Surg* 2020; **405**: 303-312 [PMID: 32333095 DOI: 10.1007/s00423-020-01873-4]
 - 44 **Kaťuchová J**, Bober J, Kaťuch V, Radoňák J. Significance of lymph node micrometastasis in pancreatic cancer patients. *Eur Surg Res* 2012; **48**: 10-15 [PMID: 22398863 DOI: 10.1159/000334171]
 - 45 **Freney PC**, Marks WM, Ryan JA, Traverso LW. Pancreatic ductal adenocarcinoma: diagnosis and staging with dynamic CT. *Radiology* 1988; **166**: 125-133 [PMID: 2827228 DOI: 10.1148/radiology.166.1.2827228]
 - 46 **Prokesch RW**, Chow LC, Beaulieu CF, Bammer R, Jeffrey RB Jr. Isoattenuating pancreatic adenocarcinoma at multi-detector row CT: secondary signs. *Radiology* 2002; **224**: 764-768 [PMID: 12202711 DOI: 10.1148/radiol.2243011284]
 - 47 **Yoon SH**, Lee JM, Cho JY, Lee KB, Kim JE, Moon SK, Kim SJ, Baek JH, Kim SH, Lee JY, Han JK, Choi BI. Small (≤ 20 mm) pancreatic adenocarcinomas: analysis of enhancement patterns and secondary signs with multiphasic multidetector CT. *Radiology* 2011; **259**: 442-452 [PMID: 21406627 DOI: 10.1148/radiol.11101133]
 - 48 **Balci NC**, Semelka RC. Radiologic diagnosis and staging of pancreatic ductal adenocarcinoma. *Eur J Radiol* 2001; **38**: 105-112 [PMID: 11335092 DOI: 10.1016/s0720-048x(01)00295-9]
 - 49 **Park MJ**, Kim YK, Choi SY, Rhim H, Lee WJ, Choi D. Preoperative detection of small pancreatic carcinoma: value of adding diffusion-weighted imaging to conventional MR imaging for improving confidence level. *Radiology* 2014; **273**: 433-443 [PMID: 24991989 DOI: 10.1148/radiol.14132563]
 - 50 **Chen W**, Zeng Y. Multi-slice spiral CT in preoperative evaluation of peritumoral vascular invasion of pancreatic cancer and tumor resectability. *Fangshe Xue Shijian* 2018; **33**: 177-181 [DOI: 10.13609/j.cnki.1000-0313.2018.02.014]
 - 51 **Hong SB**, Lee SS, Kim JH, Kim HJ, Byun JH, Hong SM, Song KB, Kim SC. Pancreatic Cancer CT: Prediction of Resectability according to NCCN Criteria. *Radiology* 2018; **289**: 710-718 [PMID: 30251929 DOI: 10.1148/radiol.2018180628]
 - 52 **Thomasset SC**, Lobo DN. Pancreatic cancer. *Surgery (Oxford)* 2010; **28**: 198-204 [DOI: 10.1016/j.mpsur.2010.01.005]
 - 53 **Imai H**, Doi R, Kanazawa H, Kamo N, Koizumi M, Masui T, Iwanaga Y, Kawaguchi Y, Takada Y, Isoda H, Uemoto S. Preoperative assessment of para-aortic lymph node metastasis in patients with pancreatic cancer. *Int J Clin Oncol* 2010; **15**: 294-300 [PMID: 20232101 DOI: 10.1007/s10147-010-0066-5]
 - 54 **Sharma C**, Eltawil KM, Renfrew PD, Walsh MJ, Molinari M. Advances in diagnosis, treatment and palliation of pancreatic carcinoma: 1990-2010. *World J Gastroenterol* 2011; **17**: 867-897 [PMID: 21412497 DOI: 10.3748/wjg.v17.i7.867]
 - 55 **Wu WG**. The theoretical basis and clinical application of total mesopancreas excision for pancreatic cancer. M.D. Thesis, Shanghai Jiaotong University. 2018. Available from: <https://kns.cnki.net/kcms/detail/detail.aspx?dbcode=CDFD&dbname=CDFDLAST2020&filename=I019638148.nh&v=Ji5PPfe waQvLhuB8pKHptWWW3kogpLrTGwxzO0%25mmd2FCsbnzK1F99DP8TH951oQVDTyi> [DOI: 10.27307/d.cnki.gsitu.2018.000071]
 - 56 **Liang HB**, Wu WG, Li ML, Wang XA, Wu XS, Gong W, Wang XF, Fang CH, Liu YB. Application of three-dimensional visualization technique in total mesopancreas excision (TMpE) for pancreatic head carcinoma. *Zhongguo Shiyong Waike Zazhi* 2019; **39**: 92-95 [DOI: 10.19538/j.cjps.issn1005-2208.2019.01.16]
 - 57 **Du ML**. Morphological Study of the Posterior Capsule of Pancreaticoduodenum. M.Sc. Thesis,

- Dalian Medical University. 2019. Available from: <https://kns.cnki.net/kcms/detail/detail.aspx?dbcode=CMFD&dbname=CMFD202001&filename=1019054230.nh&v=Qm0eoI8D5fzqzFLYpueETzv%25mmd2B2czFTUeivzSIWBxlev9hS8DL4rQVB3Gcx%25mmd2BI dokvk> [DOI: 10.26994/d.cnki.gdlyu.2019.000273]
- 58 **Kayahara M**, Nagakawa T, Konishi I, Ueno K, Ohta T, Miyazaki I. Clinicopathological study of pancreatic carcinoma with particular reference to the invasion of the extrapancreatic neural plexus. *Int J Pancreatol* 1991; **10**: 105-111 [PMID: 1748826 DOI: 10.1007/BF02924113]
- 59 **Matsuno S**, Egawa S, Fukuyama S, Motoi F, Sunamura M, Isaji S, Imaizumi T, Okada S, Kato H, Suda K, Nakao A, Hiraoka T, Hosotani R, Takeda K. Pancreatic Cancer Registry in Japan: 20 years of experience. *Pancreas* 2004; **28**: 219-230 [PMID: 15084961 DOI: 10.1097/00006676-200404000-00002]



Published by **Baishideng Publishing Group Inc**
7041 Koll Center Parkway, Suite 160, Pleasanton, CA 94566, USA

Telephone: +1-925-3991568

E-mail: bpgoffice@wjgnet.com

Help Desk: <https://www.f6publishing.com/helpdesk>

<https://www.wjgnet.com>

