

**Name of Journal:** *World Journal of Stem Cells*

**Manuscript NO:** 64506

**Manuscript Type:** SYSTEMATIC REVIEWS

**Induced pluripotent stem cells as suitable sensors for fibromyalgia and myalgic encephalomyelitis/chronic fatigue syndrome**

iPSCs as Sensors for ME/ CFS and FM

## Abstract

### BACKGROUND

Fibromyalgia and ME/CFS are devastating metabolic neuroimmune diseases difficult to diagnose, due to the numerous symptoms and the lack of specific biomarkers. Despite patient heterogeneity, linked to patient subgroups and variation in disease severity, anomalies are found in the blood and plasma of these patients when compared to healthy control groups. The seeming specificity of these "plasma factors" as recently

## Match Overview

- | Match Number | Source   | Words    | Similarity |
|--------------|--|----------|------------|
| 1            | Crossref   | 13 words | <1%        |
|              | Svetlana A Rodimova, Aleksandra V Meleshina, Ekaterina P K alabusheva, Erdem B Dashinimaev et al. "Metabolic activity an |          |            |
| 2            | Internet   | 12 words | <1%        |
|              | crawled on 14-Sep-2020<br>ammes.org  |          |            |



Induced pluripotent stem cells as suitable sensors for fibromyalgia



ALL

IMAGES

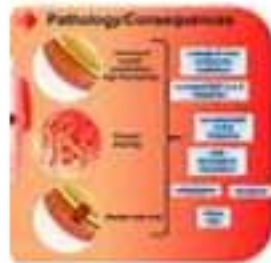
VIDEOS

11,500 Results

Any time ▾

## Application of Adult and Pluripotent Stem Cells in ...

<https://www.mdpi.com/2077-0383/9/3/766/htm> ▾



**Stem cells** are broadly classified as ASCs, embryonic **stem cells** (ESCs), and **induced pluripotent stem cells** (iPSCs) . ESCs are derived from the inner **cell mass** (ICM) of early embryos and can differentiate into three types of germ layer **cells** ...

**Cited by:** 2

**Author:** Ahmed Abdal Dayem, Kyeongseok ...

**Publish Year:** 2020

**Estimated Reading Time:** 7 mins

## [PDF] ISSN 1948-0210 (online) World Journal of Stem Cells

<https://f6publishing.blob.core.windows.net/78d4ce1...>

Biobanking. Her current research interests include the identification of molecular biomarkers of **fibromyalgia** and **myalgic encephalomyelitis/chronic fatigue syndrome** (ME/CFS) and the study of...

## Culturing Adult Stem Cells for Cell-Based Therapeutics ...

<https://www.intechopen.com/books/cell-culture/...> ▾

Nov 05, 2018 · **Pluripotent stem cells** can be successfully isolated from a variety of tissues from adult organisms. This fact opens the exciting possibility of **cell**-based therapies for a large number of clinical...

**Cited by:** 1

**Author:** Victoria Moreno-Manzano, Elisa Oltra García

**Publish Year:** 2018

## Epigenetic Components of Myalgic Encephalomyelitis/Chronic ...

<https://www.sciencedirect.com/science/article/pii/S0149291819300724>



ALL

IMAGES

VIDEOS

MAPS

NEWS

SHOPPING

14,600 Results

Any time ▾

## Epigenetic Components of Myalgic Encephalomyelitis/Chronic ...

<https://www.sciencedirect.com/science/article/pii/S0149291819300724>

Apr 01, 2019 · Introduction. **Myalgic encephalomyelitis/chronic fatigue syndrome** (ME/CFS) is classified by the International Classification of Diseases, Tenth Revision, Clinical Modification, with code R53.82 or G93.3 if postviral. 1 It is described as an acquired, complex, multisystem disease characterized by specific clinical features, including postexertional malaise, or aggravation of symptoms after ...

Cited by: 13

Author: Eloy Almenar-Pérez, Tamara Ovejero, Teres...

Publish Year: 2019

## [PDF] ISSN 1948-0210 (online) World Journal of Stem Cells

<https://f6publishing.blob.core.windows.net/78d4ce1...>

Biobanking. Her current research interests include the identification of molecular biomarkers of **fibromyalgia** and **myalgic encephalomyelitis/chronic fatigue syndrome** (ME/CFS) and the study of immunomodulatory potential of mesenchymal **stem cells**. She has also served as Chair of the Biomarker subgroup ME/CFS Common Data Elements

## Culturing Adult Stem Cells for Cell-Based Therapeutics ...

<https://www.intechopen.com/books/cell-culture/...> ▾

Nov 05, 2018 · **Pluripotent stem cells** can be successfully isolated from a variety of tissues from adult organisms. This fact opens the exciting possibility of **cell**-based therapies for a large number of clinical treatments. However, the development of optimized protocols to obtain, grow, and cryopreserve **cells**, as well as that of effective clinical treatment procedures, is no easy task.

Cited by: 1

Author: Victoria Moreno-Manzano, Elisa Oltra García

Publish Year: 2018

## Unravelling myalgic encephalomyelitis/chronic fatigue ...

[https://www.researchgate.net/publication/340649095\\_Unravelling\\_myalgic...](https://www.researchgate.net/publication/340649095_Unravelling_myalgic...)

**Myalgic encephalomyelitis/chronic fatigue syndrome** (ME/CFS) is a multisystem illness characterized by medically unexplained debilitating **fatigue** with suggested altered immunological state.

Estimated Reading Time: 6 mins

## The Role of Toll-Like Receptors in Chronic Fatigue ...

<https://www.researchgate.net/publication/274091943...>