

**Name of Journal:** *World Journal of Gastrointestinal Oncology*

**Manuscript NO:** 64630

**Manuscript Type:** MINIREVIEWS

**Endoscopic radiofrequency ablation for malignant biliary obstruction**

Jana Jarosova, Peter Macinga, Alzbeta Hujova, Jan Kral, Ondrej Urban, Julius Spicak,

Tomas Hucl

## Abstract

Cholangiocarcinoma and pancreatic cancer are the most common causes of malignant biliary obstruction. The majority of patients are diagnosed at a late stage when surgical

## Match Overview

1	<b>Internet</b> 177 words crawled on 16-Apr-2020 <a href="http://mgend.med.kyoto-u.ac.jp">mgend.med.kyoto-u.ac.jp</a>	4%
2	<b>Crossref</b> 54 words <a href="#">Alberto Larghi</a> , <a href="#">Mihai Rimbaş</a> , <a href="#">Andrea Tringali</a> , <a href="#">Ivo Boškoski</a> , <a href="#">Gianenrico Rizzatti</a> , <a href="#">Guido Costamagna</a> . "Endoscopic radiof..."	1%
3	<b>Crossref</b> 44 words <a href="#">Jianfeng Yang</a> , <a href="#">Jing Wang</a> , <a href="#">Haibin Zhou</a> , <a href="#">Yifeng Zhou</a> , <a href="#">Yang Wang</a> , <a href="#">Hangbin Jin</a> , <a href="#">Qifeng Lou</a> , <a href="#">Xiaofeng Zhang</a> . "Efficacy and	1%
4	<b>Internet</b> 34 words crawled on 30-Jul-2020 <a href="http://www.wjgnet.com">www.wjgnet.com</a>	1%
5	<b>Crossref</b> 30 words <a href="#">Reem Z. Sharaiha</a> , <a href="#">Amrita Sethi</a> , <a href="#">Kristen R. Weaver</a> , <a href="#">Tamas A. Gonda et al.</a> "Impact of Radiofrequency Ablation on Malignant	1%
6	<b>Internet</b> 30 words crawled on 29-Oct-2020 <a href="http://pubs.rsna.org">pubs.rsna.org</a>	1%

Endoscopic radiofrequency ablation for malignant biliary obstructi



ALL

IMAGES

VIDEOS

49,800 Results

Any time ▼

Recently, the use of **endoscopic biliary radiofrequency ablation** (EBRFA) have been described in patients suffering from inoperable **malignant** distal common bile duct (CBD) **obstruction**. The procedure uses heat energy to cause local tumour tissue death, resulting in re-opening of the bile duct lumen.

**Actual Enrollment** : 42 participants

**Allocation**: Randomized

**Intervention Model**: Parallel Assignment

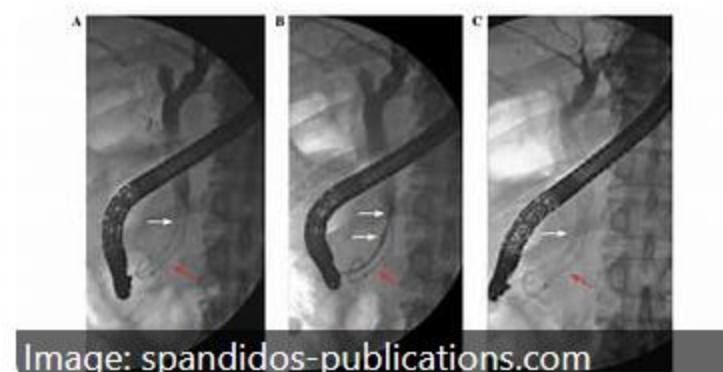


Image: spandidos-publications.com



See more