

Match Overview

1	Crossref 89 words Ken Kamata, Masayuki Kitano. "Endoscopic diagnosis of cystic lesions of the pancreas", Digestive Endoscopy, 2018	2%
2	Crossref 81 words Hussein Okasha, Mervat E. Behiry, Nagwa Ramadan, Reem Ezzat, Ahmed Yamany, Shaimaa El-Kholi, Ghada Ahme	2%
3	Internet 48 words www.ncbi.nlm.nih.gov	1%
4	Crossref 45 words Masayuki Kitano, Yasunobu Yamashita, Ken Kamata, Tiing Leong Ang et al. "The Asian Federation of Societies for Ultr	1%
5	Crossref 37 words Walter Gwang-Up Park, Ranjan Mascarenhas, Mario Palaez-Luna, Thomas C. Smyrk et al. "Diagnostic Performance...	1%
6	Internet 32 words crawled on 26-Nov-2020 ejim.springeropen.com	1%
7	Internet 30 words crawled on 02-Jan-2021 annalsgastro.gr	1%
8	Internet 29 words crawled on 12-Nov-2018 www.geus.rs	1%
	Internet 28 words	10%

Name of Journal: *World Journal of Gastroenterology*

Manuscript NO: 65657

Manuscript Type: FRONTIER

Cystic pancreatic lesions, the endless dilemma

Cystic pancreatic lesions, the endless dilemma

Abstract

Cystic pancreatic lesions involve a wide variety of pathological entities that include neoplastic and non-neoplastic lesions. The proper diagnosis, differentiation, and staging of these cystic lesions are considered a crucial issue in planning further management. There are great challenges for their diagnostic models. In our time, new emerging methods for this diagnosis have been discovered. Endoscopic ultrasonography (EUS) guided fine-needle aspiration cytology (EUS-FNAC) with chemical and molecular analysis of cyst fluid and EUS-guided fine needle-based confocal laser endomicroscopy (nCLE), through the needle microforceps biopsy (TTNB), and single-operator

Cystic pancreatic lesions, the endless dilemma



ALL

IMAGES

VIDEOS

526,000 Results

Any time ▾

Cystic lesions of the pancreas. A diagnostic and ...

<https://pubmed.ncbi.nlm.nih.gov/18497542>

Abstract. Background/aims: Due to enhanced imaging modalities, **pancreatic** cysts are being increasingly detected, often as an incidental finding. They comprise a wide range of differing underlying...

Cited by: 236**Author:** G. Garcea, S.L. Ong, A. Rajesh, C.P. Ne...**Publish Year:** 2008

Cystic lesions of the pancreas. A diagnostic and ...

<https://journalclub.wustl.edu/2008/08/13/cystic...> ▾

Aug 13, 2008 · **Cystic lesions** of the **pancreas**. A diagnostic and management **dilemma**. Pancreatology. 2008;8(3):236-51. Authors: Garcea G, Ong SL, Rajesh A, Neal CP, Pollard CA, Berry DP, Dennison AR...

Cystic lesions of the pancreas: current trends in approach ...

<https://pubmed.ncbi.nlm.nih.gov/21186195>

Cystic pancreatic lesions may be neoplastic or non-neoplastic. They may appear radiologically similar and often present a diagnostic dilemma; they need to be diagnosed and differentiated with accuracy in...

Cited by: 4**Author:** Soumil Vyas, Sheraz Markar, Tarek M Ez...**Publish Year:** 2011

Cystic Lesions of the Pancreas: A Diagnostic and ...

<https://www.sciencedirect.com/science/article/abs/pii/S1424390308800063>

Conclusion: In summary, all patients with **pancreatic cystic lesions**, whether asymptomatic or symptomatic, must be thoroughly investigated to ascertain the underlying nature of the cyst. Small

Related searches

cystic pancreatic lesion

pancreatic cystic lesion **management****treatment for** pancreatic cystic lesionspancreatic cystic lesion **white paper**pancreatic cystic lesion **radiology**pancreatic cystic lesions **guidelines**cystic pancreatic lesions **radiopaedia**cystic pancreatic lesions **ipmn**

Search Tools

Turn off Hover Translation (关闭取词)



ALL

IMAGES

VIDEOS

503,000 Results

Any time ▼

Cystic lesions of the pancreas. A diagnostic and ...

<https://pubmed.ncbi.nlm.nih.gov/18497542>

Abstract. Background/aims: Due to enhanced imaging modalities, **pancreatic** cysts are being increasingly detected, often as an incidental finding. They comprise a wide range of differing underlying pathologies from completely benign through premalignant to frankly malignant. The exact diagnostic and management pathway of these cysts remains problematic and this review attempts to provide an overview of the pathology underlying **pancreatic cystic lesions** ...

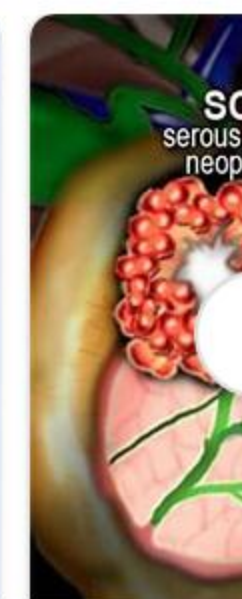
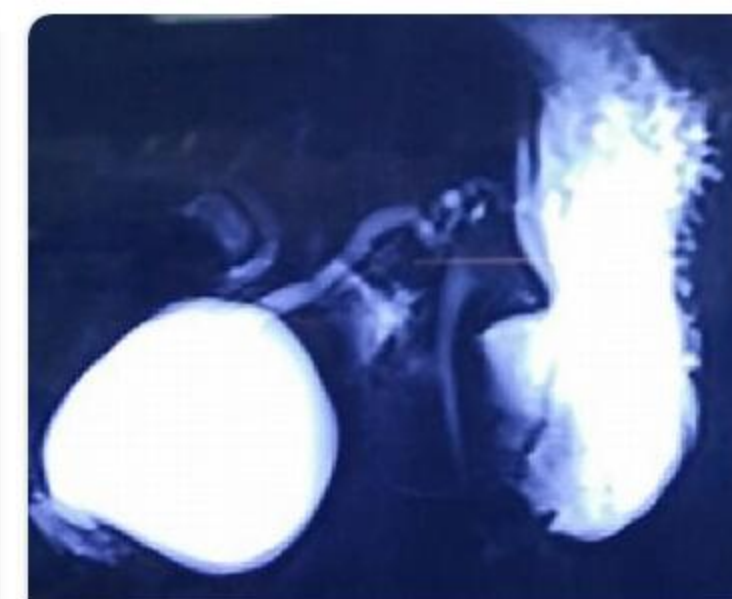
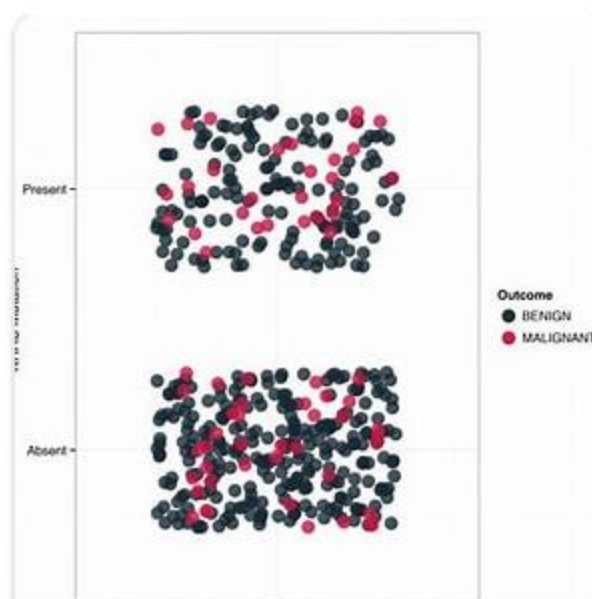
Cited by: 237**Author:** G. Garcea, S.L. Ong, A. Rajesh, C.P. Neal, C....**Publish Year:** 2008

[PDF] Cystic Lesions of the Pancreas

<https://www.researchgate.net/profile/Giuseppe...>

Fax +41 61 306 12 34 E-Mail karger@karger.ch www.karger.com Review Pancreatoogly 2203680: 8; -251 0001519/ D 10. O: 131 4279 **Cystic Lesions of the Pancreas**

Images of Cystic pancreatic Lesions, the Endless Dilemma

<bing.com/images>

[ALL](#)
[IMAGES](#)
[VIDEOS](#)
[MAPS](#)
[NEWS](#)
[SHOPPING](#)

507,000 Results

Any time ▾

Cystic lesions of the pancreas. A diagnostic and ...

<https://pubmed.ncbi.nlm.nih.gov/18497542>

Abstract. Background/aims: Due to enhanced imaging modalities, **pancreatic** cysts are being increasingly detected, often as an incidental finding. They comprise a wide range of differing underlying pathologies...

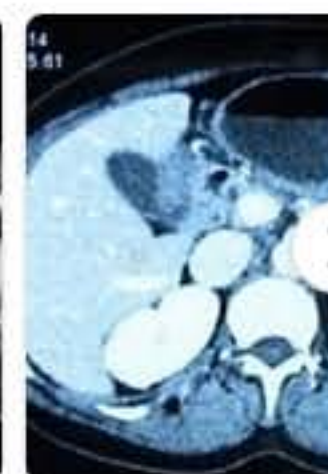
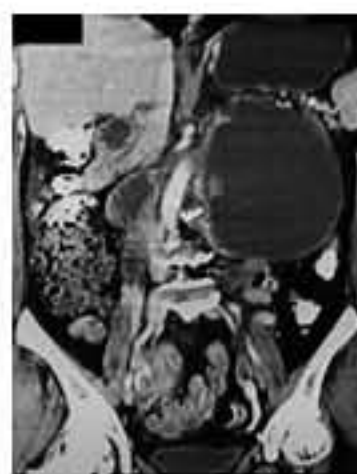
Cited by: 237

Author: G. Garcea, S.L. Ong, A. Rajesh, C.P. Neal, C....

Publish Year: 2008

Images of Cystic pancreatic Lesions, the Endless Dilemma

<bing.com/images>



See all images >

Cystic Lesions of the Pancreas: A Diagnostic and ...

<https://www.sciencedirect.com/science/article/pii/S1424390308800063>

Jun 01, 2008 · **Cystic lesions** within the **pancreas** gland, classified according to origin. is becoming untenable with the increasing number of **pancreatic cysts** detected as an incidental finding on cross-...

Cited by: 237

Author: G. Garcea, S.L. Ong, A. Rajesh, C.P. Neal, C....

Publish Year: 2008

Cystic lesions of the pancreas. A diagnostic and ...

<https://journalclub.wustl.edu/2008/08/13/cystic...>

Aug 13, 2008 · **Cystic lesions** of the **pancreas**. A diagnostic and management **dilemma**. Pancreatology. 2008;8(3):236-51. Authors: Garcea G, Ong SL, Rajesh A, Neal CP, Pollard CA, Berry DP, Dennison AR....

Cystic lesions of the pancreas



Cystic lesions of the pancreas are a group of pancreatic lesions characterized by a cystic appearance. They can be benign or malignant. Cystic lesions are found in 20.6% of all pancreatectomy specimens. Among this heterogeneous group, benign neoplasms predominate, particularly those with mucinous lining. Age at presentation, gender, location and tumor size are highly variable, with the exception of solid pseudopapillary tumor.

Wikipedia

Data from: Wikipedia

[Suggest an edit](#)