

# World Journal of *Clinical Cases*

*World J Clin Cases* 2021 August 6; 9(22): 6178-6581



## Contents

Thrice Monthly Volume 9 Number 22 August 6, 2021

## REVIEW

- 6178** COVID-19 infection and liver injury: Clinical features, biomarkers, potential mechanisms, treatment, and management challenges

*Sivandzadeh GR, Askari H, Safarpour AR, Ejtehad F, Raeis-Abdollahi E, Vaez Lari A, Abazari MF, Tarkesh F, Bagheri Lankarani K*

- 6201** Gastrointestinal manifestations of systemic sclerosis: An updated review

*Luquez-Mindiola A, Atuesta AJ, Gómez-Aldana AJ*

## MINIREVIEWS

- 6218** Mesenchymal stem cell-derived exosomes: An emerging therapeutic strategy for normal and chronic wound healing

*Zeng QL, Liu DW*

- 6234** Role of autophagy in cholangiocarcinoma: Pathophysiology and implications for therapy

*Ninfolle E, Pinto C, Benedetti A, Marziani M, Maroni L*

## ORIGINAL ARTICLE

## Case Control Study

- 6244** Risk factors for intussusception in children with Henoch-Schönlein purpura: A case-control study

*Zhao Q, Yang Y, He SW, Wang XT, Liu C*

## Retrospective Study

- 6254** Sequential therapy with combined trans-papillary endoscopic naso-pancreatic and endoscopic retrograde pancreatic drainage for pancreatic pseudocysts

*He YG, Li J, Peng XH, Wu J, Xie MX, Tang YC, Zheng L, Huang XB*

- 6268** Retrospective study of effect of whole-body vibration training on balance and walking function in stroke patients

*Xie L, Yi SX, Peng QF, Liu P, Jiang H*

- 6278** Risk factors for preoperative carcinogenesis of bile duct cysts in adults

*Wu X, Li BL, Zheng CJ, He XD*

- 6287** Diagnostic and prognostic value of secreted protein acidic and rich in cysteine in the diffuse large B-cell lymphoma

*Pan PJ, Liu JX*

- 6300** Jumbo cup in hip joint renovation may cause the center of rotation to increase

*Peng YW, Shen JM, Zhang YC, Sun JY, Du YQ, Zhou YG*

**Clinical Trials Study**

- 6308** Effect of exercise training on left ventricular remodeling in patients with myocardial infarction and possible mechanisms  
*Cai M, Wang L, Ren YL*

**Observational Study**

- 6319** Analysis of sleep characteristics and clinical outcomes of 139 adult patients with infective endocarditis after surgery  
*Hu XM, Lin CD, Huang DY, Li XM, Lu F, Wei WT, Yu ZH, Liao HS, Huang F, Huang XZ, Jia FJ*
- 6329** Health-related risky behaviors and their risk factors in adolescents with high-functioning autism  
*Sun YJ, Xu LZ, Ma ZH, Yang YL, Yin TN, Gong XY, Gao ZL, Liu YL, Liu J*
- 6343** Selection of internal fixation method for femoral intertrochanteric fractures using a finite element method  
*Mu JX, Xiang SY, Ma QY, Gu HL*

**META-ANALYSIS**

- 6357** Neoadjuvant chemotherapy for patients with resectable colorectal cancer liver metastases: A systematic review and meta-analysis  
*Zhang Y, Ge L, Weng J, Tuo WY, Liu B, Ma SX, Yang KH, Cai H*

**CASE REPORT**

- 6380** Ruptured intracranial aneurysm presenting as cerebral circulation insufficiency: A case report  
*Zhao L, Zhao SQ, Tang XP*
- 6388** Prostatic carcinosarcoma seven years after radical prostatectomy and hormonal therapy for prostatic adenocarcinoma: A case report  
*Huang X, Cai SL, Xie LP*
- 6393** Pyogenic arthritis, pyoderma gangrenosum, and acne syndrome in a Chinese family: A case report and review of literature  
*Lu LY, Tang XY, Luo GJ, Tang MJ, Liu Y, Yu XJ*
- 6403** Malaria-associated secondary hemophagocytic lympho-histiocytosis: A case report  
*Zhou X, Duan ML*
- 6410** Ileal hemorrhagic infarction after carotid artery stenting: A case report and review of the literature  
*Xu XY, Shen W, Li G, Wang XF, Xu Y*
- 6418** Inflammatory myofibroblastic tumor of the pancreatic neck: A case report and review of literature  
*Chen ZT, Lin YX, Li MX, Zhang T, Wan DL, Lin SZ*
- 6428** Management of heterotopic cesarean scar pregnancy with preservation of intrauterine pregnancy: A case report  
*Chen ZY, Zhou Y, Qian Y, Luo JM, Huang XF, Zhang XM*

- 6435** Manifestation of severe pneumonia in anti-PL-7 antisynthetase syndrome and B cell lymphoma: A case report  
*Xu XL, Zhang RH, Wang YH, Zhou JY*
- 6443** Disseminated infection by *Fusarium solani* in acute lymphocytic leukemia: A case report  
*Yao YF, Feng J, Liu J, Chen CF, Yu B, Hu XP*
- 6450** Primary hepatic neuroendocrine tumor – <sup>18</sup>F-fluorodeoxyglucose positron emission tomography/computed tomography findings: A case report  
*Rao YY, Zhang HJ, Wang XJ, Li MF*
- 6457** Malignant peripheral nerve sheath tumor in an elderly patient with superficial spreading melanoma: A case report  
*Yang CM, Li JM, Wang R, Lu LG*
- 6464** False positive anti-hepatitis A virus immunoglobulin M in autoimmune hepatitis/primary biliary cholangitis overlap syndrome: A case report  
*Yan J, He YS, Song Y, Chen XY, Liu HB, Rao CY*
- 6469** Successful totally laparoscopic right trihepatectomy following conversion therapy for hepatocellular carcinoma: A case report  
*Zhang JJ, Wang ZX, Niu JX, Zhang M, An N, Li PF, Zheng WH*
- 6478** Primary small cell esophageal carcinoma, chemotherapy sequential immunotherapy: A case report  
*Wu YH, Zhang K, Chen HG, Wu WB, Li XJ, Zhang J*
- 6485** Subdural fluid collection rather than meningitis contributes to hydrocephalus after cervical laminoplasty: A case report  
*Huang HH, Cheng ZH, Ding BZ, Zhao J, Zhao CQ*
- 6493** Phlegmonous gastritis developed during chemotherapy for acute lymphocytic leukemia: A case report  
*Saito M, Morioka M, Izumiyama K, Mori A, Ogasawara R, Kondo T, Miyajima T, Yokoyama E, Tanikawa S*
- 6501** Spinal epidural hematoma after spinal manipulation therapy: Report of three cases and a literature review  
*Liu H, Zhang T, Qu T, Yang CW, Li SK*
- 6510** Abdominal hemorrhage after peritoneal dialysis catheter insertion: A rare cause of luteal rupture: A case report  
*Gan LW, Li QC, Yu ZL, Zhang LL, Liu Q, Li Y, Ou ST*
- 6515** Concealed mesenteric ischemia after total knee arthroplasty: A case report  
*Zhang SY, He BJ, Xu HH, Xiao MM, Zhang JJ, Tong PJ, Mao Q*
- 6522** Chylothorax following posterior low lumbar fusion surgery: A case report  
*Huang XM, Luo M, Ran LY, You XH, Wu DW, Huang SS, Gong Q*
- 6531** Non-immune hydrops fetalis: Two case reports  
*Maranto M, Cigna V, Orlandi E, Cucinella G, Lo Verso C, Duca V, Picciotto F*



- 6538** Bystander effect and abscopal effect in recurrent thymic carcinoma treated with carbon-ion radiation therapy: A case report  
*Zhang YS, Zhang YH, Li XJ, Hu TC, Chen WZ, Pan X, Chai HY, Ye YC*
- 6544** Management of an intracranial hypotension patient with diplopia as the primary symptom: A case report  
*Wei TT, Huang H, Chen G, He FF*
- 6552** Spontaneous rupture of adrenal myelolipoma as a cause of acute flank pain: A case report  
*Kim DS, Lee JW, Lee SH*
- 6557** Neonatal necrotizing enterocolitis caused by umbilical arterial catheter-associated abdominal aortic embolism: A case report  
*Huang X, Hu YL, Zhao Y, Chen Q, Li YX*
- 6566** Primary mucosa-associated lymphoid tissue lymphoma in the midbrain: A case report  
*Zhao YR, Hu RH, Wu R, Xu JK*
- 6575** Extensive cutaneous metastasis of recurrent gastric cancer: A case report  
*Chen JW, Zheng LZ, Xu DH, Lin W*

**ABOUT COVER**

Editorial Board Member of *World Journal of Clinical Cases*, Salma Ahi, MD, Assistant Professor, Research Center for Noncommunicable Diseases, Jahrom University of Medical Sciences, Jahrom 193, Iran. salmaahi.61@gmail.com

**AIMS AND SCOPE**

The primary aim of *World Journal of Clinical Cases* (WJCC, *World J Clin Cases*) is to provide scholars and readers from various fields of clinical medicine with a platform to publish high-quality clinical research articles and communicate their research findings online.

WJCC mainly publishes articles reporting research results and findings obtained in the field of clinical medicine and covering a wide range of topics, including case control studies, retrospective cohort studies, retrospective studies, clinical trials studies, observational studies, prospective studies, randomized controlled trials, randomized clinical trials, systematic reviews, meta-analysis, and case reports.

**INDEXING/ABSTRACTING**

The WJCC is now indexed in Science Citation Index Expanded (also known as SciSearch®), Journal Citation Reports/Science Edition, Scopus, PubMed, and PubMed Central. The 2021 Edition of Journal Citation Reports® cites the 2020 impact factor (IF) for WJCC as 1.337; IF without journal self cites: 1.301; 5-year IF: 1.742; Journal Citation Indicator: 0.33; Ranking: 119 among 169 journals in medicine, general and internal; and Quartile category: Q3. The WJCC's CiteScore for 2020 is 0.8 and Scopus CiteScore rank 2020: General Medicine is 493/793.

**RESPONSIBLE EDITORS FOR THIS ISSUE**

**Production Editor:** Yan-Xia Xing; **Production Department Director:** Yun-Jie Ma; **Editorial Office Director:** Jin-Lei Wang.

**NAME OF JOURNAL**

*World Journal of Clinical Cases*

**ISSN**

ISSN 2307-8960 (online)

**LAUNCH DATE**

April 16, 2013

**FREQUENCY**

Thrice Monthly

**EDITORS-IN-CHIEF**

Dennis A Bloomfield, Sandro Vento, Bao-Gan Peng

**EDITORIAL BOARD MEMBERS**

<https://www.wjgnet.com/2307-8960/editorialboard.htm>

**PUBLICATION DATE**

August 6, 2021

**COPYRIGHT**

© 2021 Baishideng Publishing Group Inc

**INSTRUCTIONS TO AUTHORS**

<https://www.wjgnet.com/bpg/gerinfo/204>

**GUIDELINES FOR ETHICS DOCUMENTS**

<https://www.wjgnet.com/bpg/GerInfo/287>

**GUIDELINES FOR NON-NATIVE SPEAKERS OF ENGLISH**

<https://www.wjgnet.com/bpg/gerinfo/240>

**PUBLICATION ETHICS**

<https://www.wjgnet.com/bpg/GerInfo/288>

**PUBLICATION MISCONDUCT**

<https://www.wjgnet.com/bpg/gerinfo/208>

**ARTICLE PROCESSING CHARGE**

<https://www.wjgnet.com/bpg/gerinfo/242>

**STEPS FOR SUBMITTING MANUSCRIPTS**

<https://www.wjgnet.com/bpg/GerInfo/239>

**ONLINE SUBMISSION**

<https://www.f6publishing.com>

## Phlegmonous gastritis developed during chemotherapy for acute lymphocytic leukemia: A case report

Makoto Saito, Masanobu Morioka, Koh Izumiyama, Akio Mori, Reiki Ogasawara, Takeshi Kondo, Toru Miyajima, Emi Yokoyama, Satoshi Tanikawa

**ORCID number:** Makoto Saito 0000-0002-2683-9475; Masanobu Morioka 0000-0002-0784-8114; Koh Izumiyama 0000-0002-0762-6255; Akio Mori 0000-0002-2064-2145; Reiki Ogasawara 0000-0002-1136-5035; Takeshi Kondo 0000-0001-7455-5824; Toru Miyajima 0000-0001-8283-4997; Emi Yokoyama 0000-0002-1207-2138; Satoshi Tanikawa 0000-0002-8268-7242.

**Author contributions:** All authors collected and analyzed the patient's clinical data; Tanikawa S involved in pathological procedure; Saito M designed and wrote the manuscript; all authors agree to be accountable for all aspects of the work.

**Informed consent statement:** Informed written consent was obtained from the patient for publication of this report and any accompanying images.

**Conflict-of-interest statement:** The authors declare that they have no conflict of interest in this work.

**CARE Checklist (2016) statement:** The manuscript was prepared according to the CARE Checklist (2016).

**Open-Access:** This article is an open-access article that was selected by an in-house editor and

**Makoto Saito, Masanobu Morioka, Koh Izumiyama, Akio Mori, Reiki Ogasawara, Takeshi Kondo, Toru Miyajima, Emi Yokoyama,** Department of Internal Medicine and Hematology, Aiiiku Hospital, Sapporo 0640804, Hokkaido, Japan

**Satoshi Tanikawa,** Department of Cancer Pathology, Hokkaido University, Faculty of Medicine, Sapporo 0608638, Hokkaido, Japan

**Satoshi Tanikawa,** Institute for Chemical Reaction Design and Discovery (WPI-ICReDD), Hokkaido University, Sapporo 001-0021, Hokkaido, Japan

**Corresponding author:** Makoto Saito, MD, PhD, Chief Doctor, Department of Internal Medicine and Hematology, Aiiiku Hospital, Chuo-ku Minami 4 Nishi 25, Sapporo 0640804, Hokkaido, Japan. [ikyoku@aiku-hp.or.jp](mailto:ikyoku@aiku-hp.or.jp)

### Abstract

#### BACKGROUND

Phlegmonous gastritis (PG) is a rare bacterial infectious disease characterized by neutrophil-based purulent inflammation of the gastric wall. The most representative causative bacterium is *Streptococcus pyogenes*, followed by *Staphylococcus*, *Pneumococcus* and *Enterococcus*. Hepatic portal venous gas (HPVG) is considered a potentially fatal condition and is rarely associated with PG.

#### CASE SUMMARY

The white blood cell count of a 70-year-old woman with acute lymphocytic leukemia in complete remission dropped to 100/ $\mu$ L after consolidation chemotherapy. Her vital signs were consistent with septic shock. Venous blood culture revealed the presence of *Bacillus cereus*. Abdominal computed tomography (CT) and esophagogastroduodenoscopy (EGD) showed marked thickening of the gastric wall. As with the other findings, CT was suggestive of HPVG, and EGD showed pseudomembrane-like tissue covering the superficial mucosa. Histopathological examination of gastric biopsy specimens showed mostly necrotic tissue with lymphocytes rather than neutrophils. Culture of gastric specimens revealed the presence of *Bacillus cereus*. We finally diagnosed this case as PG with *Bacillus cereus*-induced sepsis and HPVG. This patient recovered successfully with conservative treatment, chiefly by using carbapenem antibiotics.

#### CONCLUSION

The histopathological finding of this gastric biopsy specimen should be called

fully peer-reviewed by external reviewers. It is distributed in accordance with the Creative Commons Attribution NonCommercial (CC BY-NC 4.0) license, which permits others to distribute, remix, adapt, build upon this work non-commercially, and license their derivative works on different terms, provided the original work is properly cited and the use is non-commercial. See: <http://creativecommons.org/licenses/by-nc/4.0/>

**Manuscript source:** Unsolicited manuscript

**Specialty type:** Gastroenterology and hepatology

**Country/Territory of origin:** Japan

**Peer-review report's scientific quality classification**

Grade A (Excellent): 0  
Grade B (Very good): 0  
Grade C (Good): C  
Grade D (Fair): 0  
Grade E (Poor): 0

**Received:** April 7, 2021

**Peer-review started:** April 7, 2021

**First decision:** April 23, 2021

**Revised:** April 26, 2021

**Accepted:** May 24, 2021

**Article in press:** May 24, 2021

**Published online:** August 6, 2021

**P-Reviewer:** Tang SH

**S-Editor:** Yan JP

**L-Editor:** A

**P-Editor:** Wang LYT



"neutropenic necrotizing gastritis".

**Key Words:** Phlegmonous gastritis; Chemotherapy; neutropenia; *Bacillus cereus*; Histopathology; Case report

©The Author(s) 2021. Published by Baishideng Publishing Group Inc. All rights reserved.

**Core Tip:** We reported a case of phlegmonous gastritis due to *Bacillus cereus* infection during the neutropenic phase after consolidation chemotherapy for acute lymphocytic leukemia. Including our 2 patients, we analyzed 7 similar patients reported in the past. Histopathological examination with gastric biopsy was performed only in our two patients, and in both cases, characteristic findings that should be called "neutropenic necrotizing gastritis" were observed.

**Citation:** Saito M, Morioka M, Izumiyama K, Mori A, Ogasawara R, Kondo T, Miyajima T, Yokoyama E, Tanikawa S. Phlegmonous gastritis developed during chemotherapy for acute lymphocytic leukemia: A case report. *World J Clin Cases* 2021; 9(22): 6493-6500

**URL:** <https://www.wjgnet.com/2307-8960/full/v9/i22/6493.htm>

**DOI:** <https://dx.doi.org/10.12998/wjcc.v9.i22.6493>

## INTRODUCTION

Phlegmonous gastritis (PG) is a rare bacterial infectious disease characterized by neutrophil-based purulent inflammation of the gastric wall starting from the submucosa and muscularis layers[1]. In approximately 70% of cases, the causative bacterium is *Streptococcus pyogenes*, and other causative bacteria include *Staphylococcus*, *Pneumococcus* and *Enterococcus*[2]. Alcoholism, mucosal injury, gastric hemorrhage and immunosuppression have been reported to be risk factors for PG[2,3]. PG is regarded as a disease with a high mortality rate of approximately 40%, even if treated in a timely manner[3,4]. There are only a few reports on PG with hematological malignancies[5,6]. These patients developed PG after having gastric lymphoma or extramedullary leukemia in the stomach, and all died early. On the other hand, hepatic portal venous gas (HPVG) is also still considered a potentially fatal condition that can occur during intestinal ischemia or necrosis and is rarely associated with PG[7,8].

Previously, we reported a case of PG with *Bacillus cereus*-induced sepsis in which the neutrophil count was markedly reduced during chemotherapy for acute lymphocytic leukemia (ALL)[9]. In this study, we report a case of a similar pathological condition accompanied by HPVG followed by multiple liver abscesses.

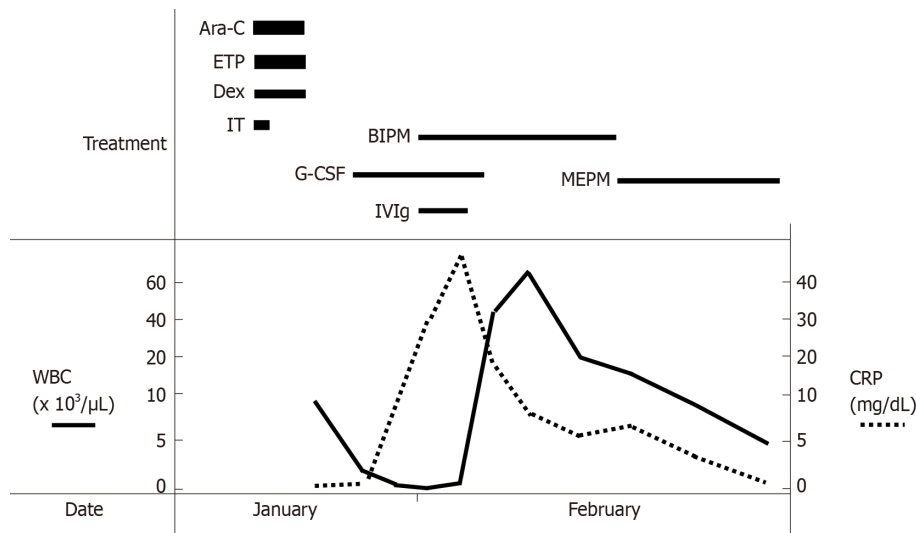
## CASE PRESENTATION

### Chief complaints

A 70-year-old woman complained of low-grade fever (37.5 °C), general fatigue, loss of appetite for 2 d, and nausea and watery diarrhea beginning on day 11 (with day 1 being the day on which chemotherapy was started).

### History of present illness

Four months ago, she had developed ALL and achieved complete remission (CR) with induction chemotherapy. She received consolidation chemotherapy with cytarabine (1.4 g, 2 times/d), etoposide (100 mg/d) and dexamethasone (33 mg/d) for 3 d (Figure 1). On the first day (day 1), intrathecal injection of methotrexate (15 mg), cytarabine (40 mg) and prednisolone (10 mg) was also administered. The white blood cell count (WBC) began to decrease steadily, and on day 7, a granulocyte-colony stimulating factor (G-CSF) preparation (lenograstim) was used, but the decline continued.



**Figure 1 Clinical course of this patient.** Ara-C: Cytarabine; ETP: Etoposide; Dex: Dexamethasone; IT: Intrathecal injection; G-CSF: Granulocyte-colony stimulating factor; BIPM: Biapenem; MEPM: Meropenem; IVIg: Intra-venous immunoglobulin; WBC: White blood cell count; CRP: C-reactive protein.

### History of past illness

She was on medication for dyslipidemia and gastroesophageal reflux disease. For the latter, she was taking vonoprazan (10 mg) before she developed the present disease.

### Personal and family history

There was no personal and family history.

### Physical examination

On day 11, she exhibited the following vital signs that were consistent with septic shock: body temperature increase to 38.1 °C; temporary drop in blood pressure to 78/60 mmHg; heart rate of 126 beats/min; respiratory rate of 31 breaths/min; and pulse oximetry (SpO<sub>2</sub>) of 96%. She was obviously sick and was lying down, but there was no apparent loss of consciousness. Physical examination revealed mild tenderness in the upper abdomen.

### Laboratory examinations

The venous blood culture was later found to reveal the presence of *Bacillus cereus*. The culture of the tip of the removed central venous catheter was negative. The other data on day 11 to day 17 are shown in Table 1. WBC had decreased to 100/μL on day 11 (also shown in Figure 1). C-reactive protein (CRP) levels increased rapidly to 29.71 mg/dL on day 11 and to 46.82 mg/dL on day 13 (Figure 1). WBC markedly increased to 45000/μL on day 15 and 66000/μL on day 17 (Figure 1) despite stopping G-CSF. Liver dysfunction was observed in conjunction with elevated WBC.

### Imaging examinations

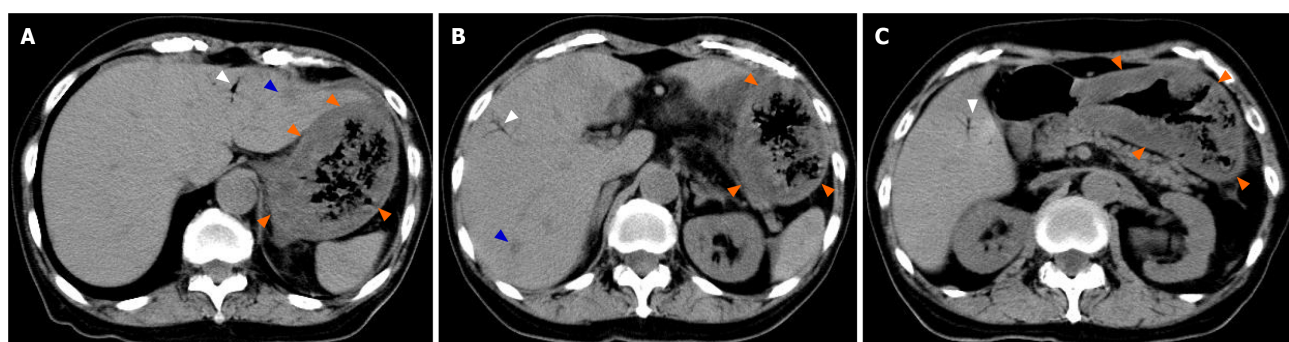
An abdominal computed tomography (CT) scan on day 11 showed marked thickening of the gastric wall (Figure 2, orange arrow). CT also showed findings suggestive of HPVG scattered in the liver (Figure 2, white arrow); in addition, low-density areas (LDAs) were found in liver S3 and S7 (Figure 2, blue arrow). Esophagogastroduodenoscopy (EGD) on day 14 showed marked thickening of the gastric wall in the corpus of the stomach as well as yellow-green pseudomembrane-like tissue covering the superficial mucosa (Figure 3A-C). This patient was clinically diagnosed with PG with HPVG.

EGD on day 29 revealed that the abovementioned abnormal findings improved in 15 d, and linear redness, erosion and ulcerative mucosal changes were observed (Figure 3D). On the same day, CT showed improvements in thickening of the gastric wall, and the findings suggestive of HPVG disappeared (Figure 4). In addition, LDAs in liver S3 and S7 originally observed on day 11 changed to findings consistent with abscesses (Figure 4, blue arrow).

**Table 1** Transition of the data on day 11 to day 17

	(Normal range)	Day 11	Day 13	Day 15	Day 17
WBC (/μL)	(4000-8000)	100	500	45000	66000
Myelocyte	-		1	10	7
Metamyelocyte	-		1	4	14
Stab leukocytes (%)	0-6		3	3	4
Segmented leukocytes (%)	45-68	98	49	59	67
Lymphocytes (%)	20-45	1	16	5	1
Monocytes (%)	2-8	1	29	19	7
Eosinophils (%)	0-6		1		
RBC ( $\times 10^4/\mu\text{L}$ )	380-500	448	260	303	318
Hb (g/dL)	12.0-16.0	11.5	6.7	8.1	8.6
Platelet ( $\times 10^4/\mu\text{L}$ )	12.0-40.0	3.2	3.3	8.1	17.9
CRP (mg/dL)	< 0.30	29.71	46.82	16.93	8.01
TP (g/dL)	6.7-8.3	5.1	4.2	4.1	4.3
Alb (g/dL)	3.8-5.3	2.9	1.9	1.9	2.2
AST (U/L)	8-38	41	21	67	48
ALT (U/L)	4-44	34	26	79	79
LDH (U/L)	120-245	142	299	1175	973
ALP (U/L)	105-330	215	232	388	545
$\gamma$ -GTP (U/L)	< 30	15	13	43	72
T-Bil (mg/dL)	0.2-1.2	0.5	0.5	0.4	0.4
BUN (mg/dL)	8.0-20.0	39.4	21.2	17.8	14.7
Cr (mg/dL)	0.50-0.86	1.97	1.11	0.77	0.85
e-GFR (mL/min/1.73 m <sup>2</sup> )	> 90	20.2	38.2	56.4	50.6

WBC: White blood cells; RBC: Red blood cells; Hb: Hemoglobin; CRP: C-reactive protein; TP: Total protein; Alb: Albumin; AST: Aspartate aminotransferase; ALT: Alanine aminotransferase; LDH: Lactate dehydrogenase; ALP: Alkaline phosphatase;  $\gamma$ -GTP:  $\gamma$ -glutamyl transpeptidase; T-Bil: Total bilirubin; BUN: Blood urea nitrogen; Cr: Creatinine; e-GFR: Estimated glomerular filtration rate.

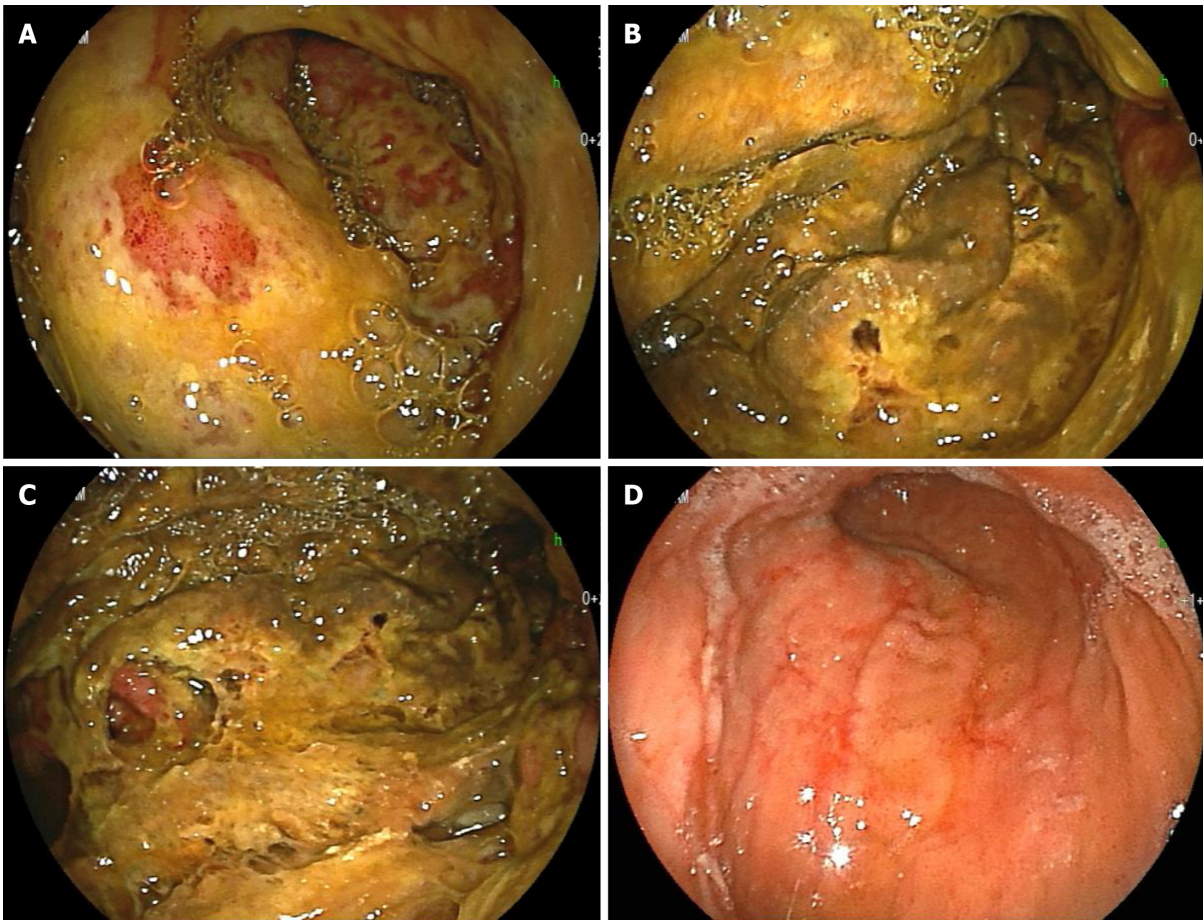


**Figure 2** Abdominal computed tomography (day 11). Marked thickening of the gastric wall (orange arrow), suggestive of hepatic portal venous gas (white arrow), and low-density areas (blue arrow) were found.

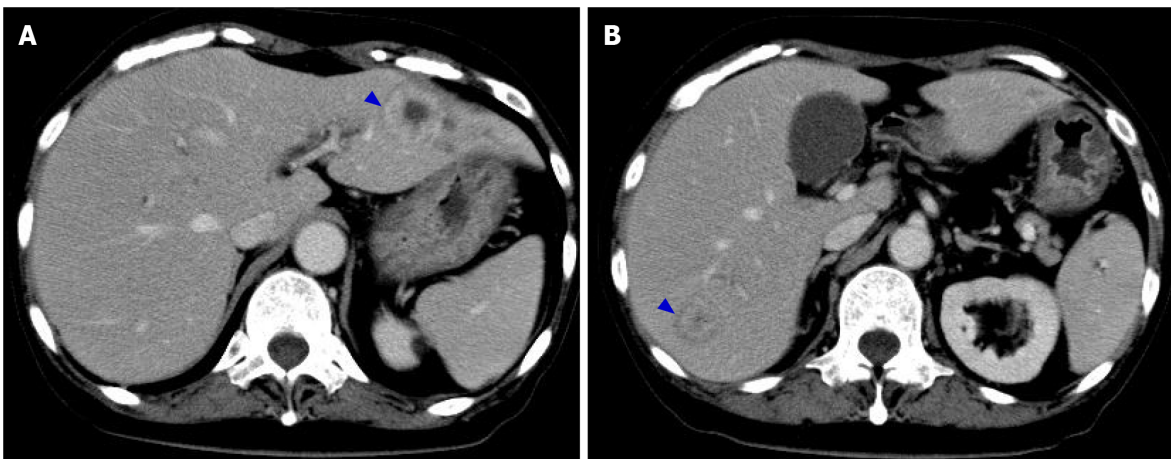
## FINAL DIAGNOSIS

Histopathological analysis of gastric biopsy specimens showed mostly necrotic tissue with fibrin precipitation and partial infiltration of inflammatory cells by lymphocytes rather than neutrophils (Figure 5A). It was unique findings that should be called



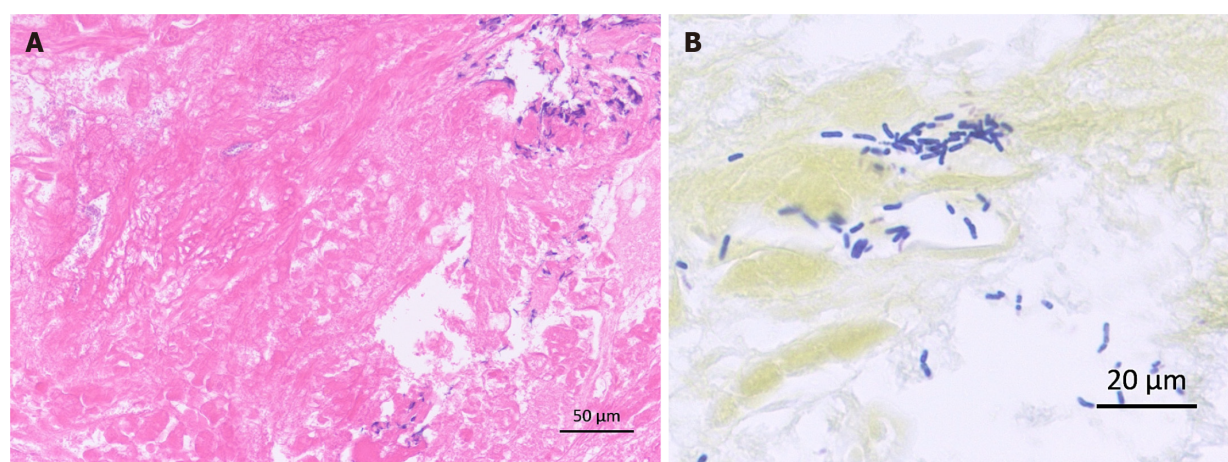


**Figure 3 Esophagogastroduodenoscopy.** A-C: Marked thickening of the gastric wall in the corpus of the stomach and yellow-green pseudomembrane-like tissue covering the superficial mucosa were observed (day 14); D: The above abnormal findings were improved, and linear redness, erosion and ulcerative mucosal changes were observed (day 29).



**Figure 4 Abdominal computed tomography (day 29).** The thickening of the gastric wall was improved, and signs suggestive of hepatic portal venous gas disappeared. The low-density areas in liver S3 and S7 observed 18 d ago were changed the findings consistent with abscesses (blue arrow).

"neutropenic necrotizing gastritis". Bacilli showing positive Gram staining were also observed (Figure 5B). Culture of gastric specimens later proved that this bacterial group was *Bacillus cereus*. We finally diagnosed this case as PG with *Bacillus cereus*-induced sepsis and HPVG followed by multiple liver abscesses. The causative bacteria of the liver abscesses were not investigated.



**Figure 5 Histopathology of the gastric biopsy.** A: Mostly necrotic tissue and partly infiltration by lymphocytes were observed (hematoxylin & eosin stain); B: Bacilli were gram-positive (gram stain).

## TREATMENT

The clinical course of this patient is shown in [Figure 1](#). After day 11, while use of G-CSF was continued for severe infection, administration of carbapenem antibiotics (initially biapenem 0.3 g, 2 times/d and then meropenem 0.5 g, 2 times/d) was used in combination with intravenous immunoglobulin (5 g/d) for 3 d. In addition to antibiotics, septic shock was treated by administration of hydrocortisone and fluid. Red blood cells and platelets were transfused once each. No invasive treatment was administered for liver abscess.

## OUTCOME AND FOLLOW-UP

This patient recovered successfully with conservative treatment, chiefly administration of antibiotics, without any sequelae. She then received intrathecal injection twice and repeated consolidation therapy for ALL with blinatumomab (a CD19/CD3 bispecific T-cell engager) for 3 cycles. She has no recurrence of PG more than one year and is maintaining CR for ALL. Currently, she is being followed-up with no treatment as an outpatient.

## DISCUSSION

Our patient with ALL developed PG due to *Bacillus cereus* infection during the neutrophil depletion period after consolidation chemotherapy and was temporarily in a fatal state of septic shock. We reported a similar case in 2012 in which severe inflammation, such as an increase in CRP levels to 52.97 mg/dL, was observed, and we were able to save the lives of patient at that time[9] (since then, the patient has been able to lead a completely normal daily life for more than 11 years). Regarding the current patient, on the day that WBC dropped to 100/μL, the patient complained of gastrointestinal symptoms as well as worsening vital signs such as fever, decreased blood pressure, tachycardia and tachypnea, and we strongly suspected PG because CT showed marked thickening of the gastric wall. Based on our previous experience, we started administering carbapenem antibiotics immediately, before the causative organism was identified; the initial response was effective, and we were able to save this patient's life.

In general, hematological malignancies tend to be accompanied by a decrease in immunocompetence, and myelosuppression by the administration of anticancer drugs further promotes immunodeficiency. There have been 6 reports of patients with hematological malignancies who developed PG during the neutropenic phase after the administration of anticancer drugs, including 1 of our previous patients[9-14]. [Table 2](#) summarizes the clinical features of a total of 7 patients, including the patient experienced this time. Notably, *Enterococcus*, which is one of the representative causative bacterial species of PG, was detected in only 2 cases, whereas *Bacillus*, which



Table 2 Clinical features of phlegmonous gastritis after chemotherapy for hematological malignancy

No.	Ref.	Age	Sex	Hematological malignancy	WBC/neutrophils	Pathogen(s)	Histopathological examination	Gastric acid secretion inhibitor	Outcome
1	Takeuchi <i>et al</i> [10]	63	M	ATLL	300/unknown	Gram-positive cocci and Gram-negative bacilli <sup>1</sup>	Not executed	H <sub>2</sub> -RA	Death
2	Matsumoto <i>et al</i> [11]	74	M	MF and MM	800/300	<i>Bacillus thuringiensis</i>	Not executed	Unknown	Death
3	Iqbal <i>et al</i> [12]	59	F	AML (2nd relapse)	< 100/0	<i>Citrobacter freundii</i> / <i>Enterococcus faecalis</i> / <i>Bacillus cereus</i>	Not executed	Unknown	Recovered
4	Inagawa <i>et al</i> [13]	34	F	APL with MF	320/20	<i>Enterobacter cloacae</i> / <i>Enterococcus</i> species/MRS	Not executed	PPI	Death
5	Shi <i>et al</i> [14]	33	M	MPAL	70/unknown	<i>Stenotrophomonas maltophilia</i>	Not executed	PPI	Recovered
6	Saito <i>et al</i> [9]	55	F	ALL	100/4	<i>Bacillus cereus</i>	Executed	PPI	Recovered
7 (this case)		70	F	ALL	100/98	<i>Bacillus cereus</i>	Executed	P-CAB	Recovered

<sup>1</sup>Colonies were confirmed, but bacterial species could not be identified. ATLL: Adult T-cell leukemia/lymphoma; MF: Myelofibrosis; MM: Multiple myeloma; AML: Acute myeloid leukemia; APL: Acute promyelocytic leukemia; MPAL: Mixed-phenotype acute leukemia; ALL: Acute lymphocytic leukemia; WBC: White blood cells; MRS: Methicillin-resistant *Staphylococcus*; H<sub>2</sub>-RA: Histamine H<sub>2</sub>-receptor antagonist; PPI: Proton pump inhibitor; P-CAB: Potassium-competitive acid blocker; M: Male; F: Female.

has rarely been reported as a causative agent of PG, was detected in 4 cases, including our 2 cases. Neutrophil-based purulent inflammation of the gastric wall is considered to be the main cause of PG, whereas in 5 of the 7 cases, the neutrophil count was reduced to less than 100/μL. It was presumed that there is a difference in the onset process as a bacterial infectious disease. Of 7 cases, only our two cases were histopathologically examined with gastric biopsy, and unlike typical PG findings, most were covered with necrotic tissue, in which gram-positive bacilli were found. Infiltration of inflammatory cells by lymphocytes but not neutrophils was partly observed. This finding should be called "neutropenic necrotizing gastritis", which has never been proposed, rather than the typical PG. *Bacillus*, one of the residents of the bacterial flora in the small intestine, infected the gastric wall under immunosuppression and caused PG in this patient. *Bacillus cereus* produces various toxins[15], including necrotizing enterotoxin which may have been present in our two patients.

Gastric acid secretion inhibitors were used in 5 cases (two cases were not described). Recently, it was reported that the risk of intestinal infectious diseases such as *Clostridium difficile* is increased by disruption of the function of the barrier that prevents the invasion of pathogens into the gastrointestinal tract by a gastric acid secretion inhibitor[16]. It was reported that vonoprazan, a potassium-competitive acid blocker used in this patient, showed a stronger gastric acid secretion inhibitory effect than proton pump inhibitor and induced a stronger change in the composition of the intestinal flora[17]. Shi *et al*[14] expressed concern that the use of gastric acid secretion inhibitors increases the bacterial abundance in the gastric juice and thus may result in risk for the development of PG. Currently, there are few patients with PG with or without hematological malignancies, and scientific evidence is limited. In the future, a large number of patients will need to be aggregated for further study.

This patient also developed HPVG and liver abscess. HPVG was previously a sign of poor prognosis, but in recent years, the mortality rate of patients with HPVG detected by CT has been lower (29%) than that previously reported, and HPVG alone cannot predict prognosis[18]. In our case, a small amount of HPVG was found in the initial CT that suggested PG, and we were able to conservatively respond before it spread. In addition, formation of liver abscess could be followed by CT from the beginning. We have not been able to identify the bacterial species responsible for the liver abscess; however, we believe that the causative agent was *Bacillus cereus*, which spread through the portal vein. Furthermore the liver abscesses could also be conservatively cured without drainage.

## CONCLUSION

We reported a case of PG due to *Bacillus cereus* infection during the neutropenic phase after the administration of anticancer drugs for ALL. We analyzed 7 cases with similar pathological conditions reported previously, including the 2 cases we experienced. The histopathological findings in our two patients should be called "neutropenic necrotizing gastritis", which has never been proposed.

## REFERENCES

- 1 **Kato K**, Tominaga K, Sugimori S, Nagami Y, Kamata N, Yamagami H, Tanigawa T, Shiba M, Watanabe T, Fujiwara Y, Arakawa T. Successful Treatment of Early-Diagnosed Primary Phlegmonous Gastritis. *Intern Med* 2015; **54**: 2863-2866 [PMID: [26567999](#) DOI: [10.2169/internalmedicine.54.4257](#)]
- 2 **Rada-Palomino A**, Muñoz-Duyos A, Pérez-Romero N, Vargas-Pierola H, Puértolas-Rico N, Ruiz-Campos L, Espínos-Pérez J, Veloso-Veloso E. Phlegmonous gastritis: A rare entity as a differential diagnostic of an acute abdomen. Description of a case and a bibliographic review. *Rev Esp Enferm Dig* 2014; **106**: 418-424 [PMID: [25361454](#)]
- 3 **Kim GY**, Ward J, Henessey B, Peji J, Godell C, Desta H, Arlin S, Tzagournis J, Thomas F. Phlegmonous gastritis: case report and review. *Gastrointest Endosc* 2005; **61**: 168-174 [PMID: [15672083](#) DOI: [10.1016/s0016-5107\(04\)02217-5](#)]
- 4 **Park CW**, Kim A, Cha SW, Jung SH, Yang HW, Lee YJ, Lee Hie, Kim SH, Kim YH. A case of phlegmonous gastritis associated with marked gastric distension. *Gut Liver* 2010; **4**: 415-418 [PMID: [20981225](#) DOI: [10.5009/gnl.2010.4.3.415](#)]
- 5 **Harikumar R**, Pramod K, Pushpa M, Simi K, Arun G. Gastric lymphoma presenting as phlegmonous gastritis. *J Gastrointest Cancer* 2007; **38**: 24-27 [PMID: [19065719](#) DOI: [10.1007/s12029-008-9011-5](#)]
- 6 **Guo J**, Young SK, Lorenzo CR, Lee CM, Kanel GC, Brynes RK, Chandrasoma P, Naritoku WY. Phlegmonous gastritis in a patient with myeloid sarcoma: a case report. *Appl Immunohistochem Mol Morphol* 2009; **17**: 458-462 [PMID: [19644358](#) DOI: [10.1097/PAI.0b013e31819f86e2](#)]
- 7 **Liu YJ**, Siracuse JJ, Gage T, Hauser CJ. Phlegmonous gastritis presenting as portal venous pneumatosis. *Surg Infect (Larchmt)* 2013; **14**: 221-224 [PMID: [23544799](#) DOI: [10.1089/sur.2011.113](#)]
- 8 **Yasuda T**, Yagi N, Nakahata Y, Kurobe T, Yasuda Y, Omatsu T, Obara A, Kojima T. A case of phlegmonous gastritis with hepatic portal venous gas caused by *Aeromonas hydrophila* successfully treated with medication. *Clin J Gastroenterol* 2020; **13**: 281-286 [PMID: [31302879](#) DOI: [10.1007/s12328-019-01020-7](#)]
- 9 **Saito M**, Morioka M, Kanno H, Tanaka S. Acute phlegmonous gastritis with neutropenia. *Intern Med* 2012; **51**: 2987-2988 [PMID: [23064584](#) DOI: [10.2169/internalmedicine.51.8537](#)]
- 10 **Takeuchi M**, Uno H, Matsuoka H, Maeda K, Marutsuka K, Sumiyoshi A, Tsuda K, Tsubouchi H. [Acute necrotizing gastritis associated with adult T-cell leukemia in the course of chemotherapy]. *Gan To Kagaku Ryoho* 1995; **22**: 289-292 [PMID: [7857107](#)]
- 11 **Matsumoto H**, Ogura H, Seki M, Ohnishi M, Shimazu T. Fulminant phlegmonitis of the esophagus, stomach, and duodenum due to *Bacillus thuringiensis*. *World J Gastroenterol* 2015; **21**: 3741-3745 [PMID: [25834344](#) DOI: [10.3748/wjg.v21.i12.3741](#)]
- 12 **Iqbal M**, Saleem R, Ahmed S, Jani P, Alvarez S, Tun HW. Successful Antimicrobial Treatment of Phlegmonous Gastritis: A Case Report and Literature Review. *Case Rep Hematol* 2018; **2018**: 8274732 [PMID: [30305967](#) DOI: [10.1155/2018/8274732](#)]
- 13 **Inagawa Y**, Komeno Y, Saito S, Maenohara Y, Yamagishi T, Kawashima H, Saito T, Abe K, Iihara K, Hatada Y, Ryu T. Prolonged Myelosuppression due to Progressive Bone Marrow Fibrosis in a Patient with Acute Promyelocytic Leukemia. *Case Rep Hematol* 2019; **2019**: 1616237 [PMID: [31885950](#) DOI: [10.1155/2019/1616237](#)]
- 14 **Shi D**, He J, Lv M, Liu R, Zhao T, Jiang Q. Phlegmonous gastritis in a patient with mixed-phenotype acute leukemia in the neutropenia phase during chemotherapy: A case report. *Medicine (Baltimore)* 2019; **98**: e17777 [PMID: [31702630](#) DOI: [10.1097/MD.00000000000017777](#)]
- 15 **Bottom E**. *Bacillus cereus*, a volatile human pathogen. *Clin Microbiol Rev* 2010; **23**: 382-398 [PMID: [20375358](#) DOI: [10.1128/CMR.00073-09](#)]
- 16 **Kwok CS**, Arthur AK, Anibueze CI, Singh S, Cavallazzi R, Loke YK. Risk of *Clostridium difficile* infection with acid suppressing drugs and antibiotics: meta-analysis. *Am J Gastroenterol* 2012; **107**: 1011-1019 [PMID: [22525304](#) DOI: [10.1038/ajg.2012.108](#)]
- 17 **Otsuka T**, Sugimoto M, Inoue R, Ohno M, Ban H, Nishida A, Inatomi O, Takahashi S, Naito Y, Andoh A. Influence of potassium-competitive acid blocker on the gut microbiome of *Helicobacter pylori*-negative healthy individuals. *Gut* 2017; **66**: 1723-1725 [PMID: [27965281](#) DOI: [10.1136/gutjnl-2016-313312](#)]
- 18 **Faberman RS**, Mayo-Smith WW. Outcome of 17 patients with portal venous gas detected by CT. *AJR Am J Roentgenol* 1997; **169**: 1535-1538 [PMID: [9393159](#) DOI: [10.2214/ajr.169.6.9393159](#)]



Published by **Baishideng Publishing Group Inc**  
7041 Koll Center Parkway, Suite 160, Pleasanton, CA 94566, USA

**Telephone:** +1-925-3991568

**E-mail:** [bpgoffice@wjgnet.com](mailto:bpgoffice@wjgnet.com)

**Help Desk:** <https://www.f6publishing.com/helpdesk>

<https://www.wjgnet.com>

