

World Journal of *Clinical Oncology*

World J Clin Oncol 2021 October 24; 12(10): 833-965



Contents

Monthly Volume 12 Number 10 October 24, 2021

EVIDENCE REVIEW

- 833 Postoperative radiotherapy in resected non-small cell lung cancer: The never-ending story
Serrano J, Crespo PC, Taboada B, Gonzalez AA, García RG, Caamaño AG, Reyes JCT, Mielgo-Rubio X, Couñago F

REVIEW

- 845 Relationship between Th17 immune response and cancer
Marques HS, de Brito BB, da Silva FAF, Santos MLC, de Souza JCB, Correia TML, Lopes LW, Neres NSM, Dórea RSDM, Dantas ACS, Morbeck LLB, Lima IS, de Almeida AA, Dias MRJ, de Melo FF

MINIREVIEWS

- 868 Human epidermal growth factor receptor 2 targeted therapy in endometrial cancer: Clinical and pathological perspectives
Saito A, Yoshida H, Nishikawa T, Yonemori K
- 882 Role of lenalidomide in the treatment of peripheral T-cell non-Hodgkin lymphomas
Cencini E, Fabbri A, Mecacci B, Bocchia M
- 897 Current update on imaging for pancreatic neuroendocrine neoplasms
Segaran N, Devine C, Wang M, Ganeshan D
- 912 Recent advances and new insights in the management of early-stage epidermal growth factor receptor-mutated non-small-cell lung cancer
Sotelo MJ, Luis García J, Torres-Mattos C, Milián H, Carracedo C, González-Ruiz MÁ, Mielgo-Rubio X, Trujillo-Reyes JC, Couñago F

ORIGINAL ARTICLE

Retrospective Study

- 926 A biomarker study in Peruvian males with breast cancer
Castaneda CA, Castillo M, Bernabe LA, Sanchez J, Torres E, Suarez N, Tello K, Fuentes H, Dunstan J, De La Cruz M, Cotrina JM, Abugattas J, Guerra H, Gomez HL
- 935 Jejunostomy in the palliative treatment of gastric cancer: A clinical prognostic score
Ramos MFKP, Pereira MA, Dias AR, Sakamoto E, Ribeiro Jr U, Zilberstein B, Nahas SC

Observational Study

- 947 Novel molecular panel for evaluating systemic inflammation and survival in therapy naïve glioma patients
Gandhi P, Shrivastava R, Garg N, Sorte SK

CASE REPORT

- 960** Gastric myeloid sarcoma: A case report

Rioja P, Macetas J, Luna-Abanto J, Tirado-Hurtado I, Enriquez DJ

ABOUT COVER

Editorial Board Member of *World Journal of Clinical Oncology*, Elizabeth Ortiz-Sánchez, PhD, MD, Principal Investigator, Subdirección de Investigación Básica, Instituto Nacional de Cancerología, Av San Fernando 22, Sección XVI, Tlalpan 14080, Mexico City, Mexico. elinfkb@yahoo.com.mx

AIMS AND SCOPE

The primary aim of *World Journal of Clinical Oncology* (WJCO, *World J Clin Oncol*) is to provide scholars and readers from various fields of oncology with a platform to publish high-quality basic and clinical research articles and communicate their research findings online.

WJCO mainly publishes articles reporting research results and findings obtained in the field of oncology and covering a wide range of topics including art of oncology, biology of neoplasia, breast cancer, cancer prevention and control, cancer-related complications, diagnosis in oncology, gastrointestinal cancer, genetic testing for cancer, gynecologic cancer, head and neck cancer, hematologic malignancy, lung cancer, melanoma, molecular oncology, neurooncology, palliative and supportive care, pediatric oncology, surgical oncology, translational oncology, and urologic oncology.

INDEXING/ABSTRACTING

The WJCO is now abstracted and indexed in PubMed, PubMed Central, Emerging Sources Citation Index (Web of Science), China National Knowledge Infrastructure (CNKI), China Science and Technology Journal Database (CSTJ), and Superstar Journals Database. The 2021 edition of Journal Citation Reports® cites the 2020 Journal Citation Indicator (JCI) for WJCO as 0.48.

RESPONSIBLE EDITORS FOR THIS ISSUE

Production Editor: Ying-Yi Yuan; Production Department Director: Yu-Jie Ma; Editorial Office Director: Ze-Mao Gong.

NAME OF JOURNAL

World Journal of Clinical Oncology

ISSN

ISSN 2218-4333 (online)

LAUNCH DATE

November 10, 2010

FREQUENCY

Monthly

EDITORS-IN-CHIEF

Hiten RH Patel, Stephen Safe

EDITORIAL BOARD MEMBERS

<https://www.wjnet.com/2218-4333/editorialboard.htm>

PUBLICATION DATE

October 24, 2021

COPYRIGHT

© 2021 Baishideng Publishing Group Inc

INSTRUCTIONS TO AUTHORS

<https://www.wjnet.com/bpg/gerinfo/204>

GUIDELINES FOR ETHICS DOCUMENTS

<https://www.wjnet.com/bpg/GerInfo/287>

GUIDELINES FOR NON-NATIVE SPEAKERS OF ENGLISH

<https://www.wjnet.com/bpg/gerinfo/240>

PUBLICATION ETHICS

<https://www.wjnet.com/bpg/GerInfo/288>

PUBLICATION MISCONDUCT

<https://www.wjnet.com/bpg/gerinfo/208>

ARTICLE PROCESSING CHARGE

<https://www.wjnet.com/bpg/gerinfo/242>

STEPS FOR SUBMITTING MANUSCRIPTS

<https://www.wjnet.com/bpg/GerInfo/239>

ONLINE SUBMISSION

<https://www.f6publishing.com>



Retrospective Study

Jejunostomy in the palliative treatment of gastric cancer: A clinical prognostic score

Marcus Fernando Kodama Pertille Ramos, Marina Alessandra Pereira, Andre Roncon Dias, Erica Sakamoto, Ulysses Ribeiro Jr, Bruno Zilberstein, Sergio Carlos Nahas

ORCID number: Marcus Fernando Kodama Pertille Ramos 0000-0003-0200-7858; Marina Alessandra Pereira 0000-0002-6865-0988; Andre Roncon Dias 0000-0003-3378-4916; Erica Sakamoto 0000-0002-0845-0730; Ulysses Ribeiro Jr 0000-0003-1711-7347; Bruno Zilberstein 0000-0002-1809-8558; Sergio Carlos Nahas 0000-0002-2268-4146.

Author contributions: Ramos MFKP and Pereira MA performed the study design, data retrieval, statistical analysis, critical analysis, the draft of the manuscript; Dias AR and Sakamoto E performed the data retrieval and manuscript review; Ribeiro Jr U, Zilberstein B and Nahas SC performed the critical analysis and manuscript review.

Institutional review board statement: The study was approved by the hospital ethics committee and registered online (<https://plataformabrasil.saude.gov.br>; CAAE: 31626220.8.0000.0068).

Informed consent statement: Informed consent was waived by the local Ethics Committee because of the retrospective nature of the study.

Conflict-of-interest statement: The authors declare that they have no

Marcus Fernando Kodama Pertille Ramos, Marina Alessandra Pereira, Andre Roncon Dias, Erica Sakamoto, Ulysses Ribeiro Jr, Bruno Zilberstein, Sergio Carlos Nahas, Department of Gastroenterology, Instituto do Cancer, Hospital das Clínicas da Faculdade de Medicina da Universidade de São Paulo, São Paulo 01246000, Brazil

Corresponding author: Marcus Fernando Kodama Pertille Ramos, MD, PhD, Surgeon, Surgical Oncologist, Department of Gastroenterology, Instituto do Cancer, Hospital das Clínicas da Faculdade de Medicina da Universidade de São Paulo, Av Dr Arnaldo 251, São Paulo 01246000, Brazil. marcus.kodama@hc.fm.usp.br

Abstract

BACKGROUND

Clinical stage IV gastric cancer (GC) may need palliative procedures in the presence of symptoms such as obstruction. When palliative resection is not possible, jejunostomy is one of the options. However, the limited survival of these patients raises doubts about who benefits from this procedure.

AIM

To create a prognostic score based on clinical variables for 90-d mortality for GC patients after palliative jejunostomy.

METHODS

We performed a retrospective analysis of Stage IV GC who underwent jejunostomy. Eleven preoperative clinical variables were selected to define the score categories, with 90-d mortality as the main outcome. After randomization, patients were divided equally into two groups: Development (J1) and validation (J2). The following variables were used: Age, sex, body mass index (BMI), American Society of Anesthesiologists classification (ASA), Charlson Comorbidity index (CCI), hemoglobin levels, albumin levels, neutrophil-lymphocyte ratio (NLR), tumor size, presence of ascites by computed tomography (CT), and the number of disease sites. The score performance metric was determined by the area under the receiver operating characteristic (ROC) curve (AUC) to define low and high-risk groups.

RESULTS

Of the 363 patients with clinical stage IVCG, 80 (22%) patients underwent

conflicts of interest that might be relevant to the contents of this manuscript.

Data sharing statement: No additional data are available.

Open-Access: This article is an open-access article that was selected by an in-house editor and fully peer-reviewed by external reviewers. It is distributed in accordance with the Creative Commons Attribution NonCommercial (CC BY-NC 4.0) license, which permits others to distribute, remix, adapt, build upon this work non-commercially, and license their derivative works on different terms, provided the original work is properly cited and the use is non-commercial. See: <http://creativecommons.org/licenses/by-nc/4.0/>

Manuscript source: Invited manuscript

Specialty type: Oncology

Country/Territory of origin: Brazil

Peer-review report's scientific quality classification

Grade A (Excellent): 0
Grade B (Very good): B
Grade C (Good): 0
Grade D (Fair): 0
Grade E (Poor): 0

Received: March 31, 2021

Peer-review started: March 31, 2021

First decision: June 28, 2021

Revised: July 3, 2021

Accepted: September 14, 2021

Article in press: September 14, 2021

Published online: October 24, 2021

P-Reviewer: Peng XC

S-Editor: Fan JR

L-Editor: A

P-Editor: Li JH



jejunostomy. Patients were predominantly male (62.5%) with a mean age of 62.4 years old. After randomization, the binary logistic regression analysis was performed and points were assigned to the clinical variables to build the score. The high NLR had the highest value. The ROC curve derived from these pooled parameters had an AUC of 0.712 (95%CI: 0.537–0.887, $P = 0.022$) to define risk groups. In the validation cohort, the diagnostic accuracy for 90-d mortality based on the score had an AUC of 0.756, (95%CI: 0.598–0.915, $P = 0.006$). According to the cutoff, in the validation cohort BMI less than 18.5 kg/m² ($P < 0.001$), CCI ≥ 1 ($P = 0.001$), ASA III/IV ($P = 0.002$), high NLR ($P = 0.012$), and the presence of ascites on CT exam ($P = 0.004$) were significantly associated with the high-risk group. The risk groups showed a significant association with first-line ($P = 0.012$), second-line chemotherapy ($P = 0.009$), 30-d ($P = 0.013$), and 90-d mortality ($P < 0.001$).

CONCLUSION

The scoring system developed with 11 variables related to patient's performance status and medical condition was able to distinguish patients undergoing jejunostomy with high risk of 90 d mortality.

Key Words: Stomach neoplasms; Gastric cancer; Palliative surgery; Jejunostomy; Gastric cancer with outlet obstruction; Stage IV gastric cancer

©The Author(s) 2021. Published by Baishideng Publishing Group Inc. All rights reserved.

Core Tip: This is a retrospective study to evaluate the outcomes of jejunostomy in clinical stage IV gastric cancer patients, and create a scoring system based on clinical variables to identify the best candidates for this approach and avoid futile procedures. We analyzed 80 patients divided into a development and validation cohort. The score had an accuracy of 75.6% in the validation cohort, and was able to properly identify the cases with high risk of 90-d mortality.

Citation: Ramos MFKP, Pereira MA, Dias AR, Sakamoto E, Ribeiro Jr U, Zilberstein B, Nahas SC. Jejunostomy in the palliative treatment of gastric cancer: A clinical prognostic score. *World J Clin Oncol* 2021; 12(10): 935-946

URL: <https://www.wjgnet.com/2218-4333/full/v12/i10/935.htm>

DOI: <https://dx.doi.org/10.5306/wjco.v12.i10.935>

INTRODUCTION

Gastric cancer (GC) represents the third leading cause of cancer mortality worldwide [1]. Surgical treatment remains the standard of care for patients with resectable GC. Nevertheless, many patients at the time of diagnosis have already locally unresectable tumors or signs of systemic disease (clinical stage IV GC patients). As a result, palliative procedures are indicated in the presence of symptoms, including bleeding, perforation, or obstruction.

Palliative gastrectomy is the preferred treatment option for locally advanced GC with gastric outlet obstruction whenever it is feasible. However, if the tumor cannot be resected, the placements of endoscopic stents or gastrojejunostomy are additional options for distal lesions, according to the patient's life expectancy[2,3]. Unfortunately, some tumors may be too large or located in the upper third of the stomach, not allowing performing the gastrojejunostomy proximal to the tumor. In this scenario, a nasogastric tube or jejunostomy are the main alternatives. Although jejunostomy enables the use of enteral nutrition, the patient persists with the obstruction and does not tolerate a full oral diet, with negative impact on quality of life.

Most studies evaluate the outcomes concerning placing a feeding jejunostomy at the time of gastroesophageal resection[4,5]. There are few reports concerning the influence of clinical and treatment variables on the outcome of palliative jejunostomy. Questions about improving survival and quality of life, in contrast to the morbidity and mortality rates in these cases, remain unanswered. Consequently, there are still doubts about

who benefits from jejunostomy.

Thus, the aim of this study was to analyze the clinical characteristics and prognosis of stage IV patients who underwent palliative jejunostomy due to obstructive GC, and create a prognostic score for mortality based on variables related to survival and worse outcomes.

MATERIALS AND METHODS

We conducted a retrospective study of patients with stage IV who underwent jejunostomy for obstructive GC at the Cancer Institute between 2009 and 2020. The indications for jejunostomy and inclusion in the study were: Adenocarcinoma histology, obstructive GC that could not be resected, diffuse or proximal gastric lesion that could not be submitted to gastrojejunostomy.

Abdominal and pelvis computed tomography (CT), endoscopy, and laboratory tests were assessed preoperatively in all patients. The clinical data collected from our prospectively-maintained database included body mass index (BMI), laboratory blood test, the clinical performance by the American Society of Anesthesiologists (ASA) classification[6], the presence of comorbidities using the Charlson Comorbidity index (CCI)[7] (without the inclusion of age and GC as comorbidity), and *Lauren* histological type. GCs were staged according to the TNM 8th edition.

All patients were operated in a high-volume center by specialized surgeons. Postoperative complications (POC) were graded according to Clavien-Dindo's classification[8] and major POC were defined as Clavien III-V.

Palliative chemotherapy (CMT) consisted of a doublet containing fluoropyrimidine (capecitabine or 5-fluorouracil) and a platin (oxaliplatin or cisplatin) as the preferred systemic regimen for the first line. Irinotecan and cisplatin chemotherapy was chosen in some cases to avoid the use of infusion pumps or in those patients with difficulty swallowing capecitabine tablets. Paclitaxel or irinotecan was used in the second line. In our center monoclonal antibodies (trastuzumab or ramucirumab), as well as immunotherapy, are not usually available for GC treatment[9-11].

Postoperative follow-up was performed every month or in shorter period if necessary. Absence in appointments for more than 12 mo was considered as a loss of follow-up. The study was approved by the hospital ethics committee (NP1681/20) and registered online (<https://plataformabrasil.saude.gov.br/>; CAAE: 31626220.8.0000.0068).

Prognostic scoring system-predicted mortality

To create a scoring system, patients were randomized into two groups (1:1) by computer using the statistical software (SPSS). The score was developed with half of the patients and further evaluated in a validation cohort with the remaining patients. The score was built with 90-d mortality as the main outcome.

As predictors, 11 preoperative clinical variables were selected and classified in a dichotomous way to define the scoring system categories. Clinical and baseline variables—generally used in clinical practice that reflect the general patient's status—and oncological variables related to the GC, that would have an impact on the prognosis and survival of patients undergoing palliative care, were selected to compose the score[12-15]. The following variables were used: Age, sex, BMI, ASA, CCI, hemoglobin (Hb) levels, albumin levels, neutrophil-lymphocyte ratio (NLR), tumor size, presence of ascites by tomography, and number of disease sites.

The points assigned to each category were determined by binary logistic regression analysis, and the score was calculated for each patient. The area under the receiver operating characteristic (ROC) curve (AUC) was used to evaluate the performance metric of the score, as explained below.

Statistical analysis

Statistical analyses were carried out using SPSS software, version 20.0 (SPSS Inc, Chicago, IL). Chi-square or Fisher's Exact test, and *t*-test were used to evaluate categorical and continuous variables, respectively. Factors related to 90-d mortality were analyzed by binary logistic regression analysis, and the odds ratios (ORs) with 95% confidence interval (95%CI) were calculated. The score performance metric was determined by the AUC. An AUC > 0.7 was considered to indicate high diagnostic accuracy, given that at least 70% of the patients were classified correctly as the high-risk group for 90-d mortality. The optimal cutoff values were determined by maximizing Youden's index (sensitivity + specificity - 1). Survival was estimated using

the method of Kaplan–Meier, and the log-rank test was employed for comparisons between the curves. Overall survival (OS) was calculated from the date of surgery until the date of death. *P* value less than 0.05 was considered statistically significant.

RESULTS

During the referred period, 363 patients with clinical stage IV GC underwent surgical procedures. Among these, jejunostomy was performed in 80 (22%) patients. The clinical characteristics of all jejunostomy patients are summarized in [Supplementary Table 1](#).

Patients were predominantly male (62.5%) with a mean age of 62.4 (SD \pm 12.8, range 24–84.6) years, and a mean BMI of 21.0 (SD \pm 3.9). Most tumors affected the middle third of the stomach (67.4%), with a median diameter of 7.2 cm on the longest axis.

The presence of disease in one or more sites, in addition to the primary, was observed in 70% of the cases: 63.7% had peritoneal metastasis and 17.5% had distant metastasis.

After randomization, jejunostomy patients were divided equally into two groups: (J1) score development group; and (J2) score validation group.

Prognostic index and risk groups

Considering the J1 group, the 90-d mortality rate was 52.5%. To develop the predictive score of mortality in 90-d, variables related to the worst outcome were selected for the design of the model. After the binary logistic regression analysis ([Supplementary Table 2](#)), 11 variables were included in the model, and points were assigned as shown in [Table 1](#), for a maximum score value of 100. The following variables with the respective defined categories were used: Age (< 65 *vs* \geq 65 years), sex (female *vs* male), BMI (< 18.5 kg/m² *vs* \geq 18.5 kg/m²), ASA (I/II *vs* III/IV), CCI (0 *vs* \geq 1), Hb levels (\leq 11 g/dL *vs* > 11 g/dL, which represents the lower limit between mild and moderate anemia for men and women), albumin levels (< 3.5 g/dL *vs* \geq 3.5 g/dL), NLR (< 2.5 *vs* \geq 2.5), tumor size (\leq 7 cm *vs* > 7 cm), number of disease sites (one *vs* two or more, with represents locoregional, distant, or peritoneal) and the presence of ascites by tomography (absent *vs* present).

The highest score value was assigned to the high NLR category and the lowest value to the low levels of Hb and BMI. After, a value was assigned to each of the 40 patients, and the performance metric of the score was assessed through the construction of the ROC curve ([Figure 1A](#)). The AUC was 71.2% (AUC 0.712, 95%CI: 0.537–0.887, *P* = 0.022), with an estimated value of 65.5 for optimal cutoff.

Based on the cutoff, the J1 patients were divided in two risk groups for 90-d mortality: Low-risk (score < 65.5), with 14 (35%) patients; and high-risk (score \geq 65.5) with 26 (65%) patients. The characteristics of the groups are shown in [Table 2](#).

Sex, age, stage, ASA, and the presence of comorbidities showed no statistically significant differences between the groups. High NLR (*P* = 0.001), albumin levels lower than 3.5 g/dL (*P* = 0.026), and tumor size greater than 7 cm (*P* = 0.001) were related to the high-risk group. The risk groups showed a significant association with both 30 and 90-d mortality (*P* = 0.013 and *P* < 0.001, respectively).

Internal validation

Using the previously constructed scoring system, the score value was calculated for each patient in the validation cohort (J2 group, *n* = 40). The rate of 90-d mortality in this group was 50%.

As shown in [Figure 1B](#), the risk score had superior diagnostic accuracy for 90-d mortality in the validation cohort (AUC 0.756, 95%CI: 0.598–0.915, *P* = 0.006). Using the previously established cutoff value (65.5 points), 21 (52.5%) and 19 (47.5%) patients were classified as low-risk and high-risk groups, respectively ([Table 3](#)).

BMI less than 18.5 kg/m² (*P* < 0.001), CCI \geq 1 (*P* = 0.001), ASA III/IV, (*P* = 0.002), high NLR (*P* = 0.012), and the presence of ascites on CT exam (*P* = 0.004) were significantly associated with the high-risk group.

Considering the postoperative outcomes, there were no differences in POC rate and length of hospital stay between the groups. However, mortality at 30 and 90 d were significantly higher in the high-risk group, demonstrating the performance of the score in predicting mortality based on the adopted cutoff value (*P* = 0.049 and *P* = 0.027, respectively). Besides, the rate of patients who received first and second-line palliative treatment was higher in the low-risk group (*P* = 0.012 and *P* = 0.009, respectively).

Table 1 Variables and points for each category-risk score for 90-d mortality

Variables	Category	Points
Sex	Female	7
Age (years)	≥ 65	4
BMI (kg/m ²)	BMI < 18.5	1
CCI	CCI ≥ 1	7
ASA classification	III/IV	9
Hb (g/dL)	Hb ≤ 11	1
Alb (g/dL)	Alb < 3.5	3
NLR	NLR ≥ 2.5	50
Presence of ascites on CT	Present	5
Tumor size (cm)	> 7 cm	5
Number of disease sites	Two or more	8
Total		100

CCI: Charlson's comorbidity index; CT: Computed tomography; NLR: Neutrophil lymphocyte ratio; ASA: American Society of Anesthesiologists; BMI: Body mass index; Hb: Hemoglobin; Alb: Albumin.

Survival outcomes–J1 and J2 groups

The median follow-up time for all patients was 2.1 mo (interquartile range = 0.6–5.9, mean of 4.4 mo). At the time of this study, 8 patients were alive, and 72 patients died (J1 = 36 and J2 = 36). The median OS for the entire jejunostomy cohort was 2.7 mo, compared to a median OS of 8 mo for the other clinical stage IV GC patients undergoing other surgical procedures (resection, bypass, or diagnostic laparoscopy) ($P < 0.001$) (Supplementary Figure 1).

Regarding the risk groups in J1 patients (development cohort), the median OS for high and low-risk was 1.0 mo and 4.3 mo, respectively ($P < 0.001$) (Figure 2A). For the J2 patients (validation cohort), the median OS was 1.4 mo for the high-risk compared to 5.7 mo in the low-risk group ($P = 0.059$) (Figure 2B).

DISCUSSION

In the present study, we performed an analysis of a cohort of stage IV GC, not amenable to surgical resection, who underwent palliative jejunostomy, and we developed a prognostic score for 90-d mortality. Jejunostomy represented the therapeutic choice in 22% of stage IV GC patients. We provided a simple and feasible scoring system with variables easily available in the clinical assessment of patients. The score demonstrated an accuracy of 75.6% in the validation cohort and was associated with mortality rates.

As is widely known, palliative gastric resection is the best option for obstructive lesions, but some patients are unable to undergo this procedure. Proximal and bulky tumors also do not allow gastrojejunostomy to be performed to restore gastrointestinal continuity. Thus, in these cases, jejunostomy or nasogastric tube are often indicated as a palliative measure to allow maintenance of nutritional enteral support[16]. Once the nutritional emergency is solved, patients may receive palliative CMT and resume oral intake in cases with good response.

The nasogastric tube causes discomfort in the nasopharynx and oropharynx besides its visual uncomfortable aspect. On the other hand, jejunostomy involves performing an invasive surgical procedure on a patient who is already frail and debilitated[17].

Since these patients have a restricted prognosis, and particular clinical and oncological conditions, the rationale of developing the score was to take into account characteristics that can impact survival to properly identify the patients that are likely to benefit from the procedure.

Building a score involves the appropriate choice of variables since a wide variety of characteristics must be considered in GC cases for the management decision. In our

Table 2 Characteristics of jejunostomy patients according to the risk group-score development cohort (n = 40)

Variables	J1-score development cohort		P value
	Low-risk	High-risk	
	n = 14 (%)	n = 26 (%)	
Sex			0.507
Female	6 (42.9)	14 (53.8)	
Male	8 (57.1)	12 (46.2)	
Age (years)			0.954
mean (SD)	62.0 (15.0)	61.7 (12.9)	
BMI (kg/m ²)			0.101
mean (SD)	20.4 (2.7)	22.4 (3.9)	
CCI			0.885
0	10 (71.4)	18 (69.2)	
≥ 1	4 (28.6)	8 (30.8)	
ASA class			0.507
I/II	8 (57.1)	12 (46.2)	
III/IV	6 (42.9)	14 (53.8)	
Hemoglobin (g/dL)			0.456
mean (SD)	11.1 (1.9)	10.5 (2.0)	
Albumin (g/dL)			0.123
mean (SD)	3.7 (0.6)	3.3 (0.6)	
NLR			0.001
mean (SD)	3.03 (1.58)	7.46 (5.22)	
Tumor size (cm)			0.18
mean (SD)	6.9 (2.1)	8.3 (3.4)	
Presence of ascites on CT			0.48
Absent	6 (42.9)	7 (26.9)	
Present	8 (57.1)	19 (73.1)	
Lauren type			1
Intestinal	4 (28.6)	6 (23.1)	
Diffuse/mixed	9 (64.3)	17 (65.4)	
Undetermined	1 (7.1)	3 (11.5)	
Number of disease sites			0.408
One (only locoregional)	6 (42.9)	7 (26.9)	
Two or more	8 (57.1)	19 (73.1)	
POC			0.075
No POC/Clavien 1-2	14 (100)	19 (73.1)	
Clavien 3-5	0 (0)	7 (26.9)	
Length of hospital stay (days)			0.452
Median (IQR)	4.5 (1.7-6.3)	5 (2.7-9.5)	
Palliative treatment-1 st line			0.257
No	6 (42.9)	16 (61.5)	
Yes	8 (57.1)	10 (38.5)	

30-d mortality			0.013
No	13 (92.9)	13 (50)	
Yes	1 (7.1)	13 (50)	
90-d mortality			< 0.001
No	12 (85.7)	7 (26.9)	
Yes	2 (14.3)	19 (73.1)	

SD: Standard deviation; IQR: Interquartile range; POC: Postoperative complication; CCI: Charlson's comorbidity index; CT: Computed tomography; NLR: Neutrophil lymphocyte ratio; ASA: American Society of Anesthesiologists; BMI: Body mass index.

model, we included 11 common usage variables related to the survival outcomes with broad external validity. The variables were categorized in a dichotomous way, which facilitates their use and reproducibility. Additionally, to provide an internal validation, the cohort was randomized into two samples: One for the construction of the model, and the second for the validation of the model.

Considering the variables that support the score, the impact of the NLR on the outcome was noteworthy, since the highest score was achieved by this parameter. The NLR represents a prognostic marker used in different solid tumors, including GC, and its correlation with survival is widely reported. Furthermore, the incidence of POC and their relation to NLR is also described in GC patients[12,18].

The rationale for this result is likely complex. Neutrophils present a pro-tumor behavior, as they promote angiogenesis, damage DNA, inhibit T-cell activity against tumor cells, and facilitate the metastatic process. Inversely, lymphocytes exert an anti-tumor function when they recognize tumor cell antigens, promoting cytolytic activity against these cells. Thus, the high NLR reflects a proinflammatory systemic status, leading to a protumoral environment that allows rapid tumor progression and development[19]. Therefore, NLR may also reflect a more advanced disease stage.

Regarding the outcome used to assign the score, we chose the 90-d mortality because it is considered a good parameter to reflect the value of a palliative procedure in patients with limited survival. Another outcome option to consider would be the ability to receive palliative CMT in the postoperative setting. However, this variable reflects not only the patient's performance after the procedure, but also their decision to perform palliative CMT. Some patients choose to adopt only best support care. Even so, in the validation cohort, low-risk patients received more frequently first and second lines of CMT.

Regarding complications related to jejunostomy, most of the reports are related to its performance after major gastrointestinal procedures for postoperative nutritional support[4,5,20,21]. Common surgical complications include loss or obstruction of the tube and local leakage of its content. The findings of some studies have shown that jejunostomy placed during GC resection is associated with increased complications. The analysis of this research included only palliative patients already with limited survival. Therefore, it is difficult to assess the impact of possible complications related to the procedure.

As previously mentioned, it is noteworthy that our score could distinguish low-risk patients, which received significantly more palliative CMT and had better median OS. Wang *et al*[22] analyzed 545 palliative procedures for GC treatment. Of these, 77 were considered as intubation procedures (17 gastrostomies and 60 jejunostomies), with a surgical mortality rate of 23.4%. The median OS in this group was 3.8 mo, and patients who underwent intubation procedures receive less chemotherapy compared to resected patients. In the study performed by Schmidt *et al*[23], the intubation group accounted for 12 out of 110 patients. These patients, combined with 52 other patients who underwent surgical procedures that did not involve the removal of the tumor, had a median OS of 9.2 mo. In our study, the median OS for the entire population was 2.7 mo. These results highlight the limited survival of these patients and the need for a good selection of patients for palliative jejunostomy.

Thus, with the application of the score, we were able to distinguish patients with a more limited survival: A high-risk group, with 1 mo and 1.4 mo in J1 and J2 cohorts, respectively; compared to the low-risk group, with 4.3 and 5.7 mo in J1 and J2 cohorts, respectively. This difference was significant in the development cohort but not in the validation cohort. Perhaps, the presence of one outlier with extremely high survival may have influenced the result in the validation cohort. As the score was developed to

Table 3 Characteristics of jejunostomy patients according to the risk group-score validation cohort (n = 40)

Variables	J2-score validation cohort		P value
	Low-risk	High-risk	
	n = 21 (%)	n = 19 (%)	
Sex			0.721
Female	6 (28.6)	4 (21.1)	
Male	15 (71.4)	15 (78.9)	0.072
Age (years)			
mean (SD)	59.7 (12.4)	66.7 (11.4)	
BMI (kg/m ²)			0.074
mean (SD)	21.4 (3.5)	19.0 (4.7)	
CCI			0.001
0	21 (100)	11 (57.9)	
≥ 1	0 (0)	8 (42.1)	
ASA class			0.002
I/II	16 (76.2)	5 (26.3)	
III/IV	5 (23.8)	14 (73.7)	
Hemoglobin (g/dL)			0.345
mean (SD)	11.4 (2.3)	10.6 (2.4)	
Albumin (g/dL)			0.047
mean (SD)	3.6 (0.6)	3.1 (0.6)	
NLR			0.012
mean (SD)	3.65 (3.45)	8.81 (7.64)	
Tumor size (cm)			0.731
mean (SD)	6.6 (2.6)	6.9 (3.4)	
Presence of ascites on CT			0.004
Absent	14 (66.7)	4 (21.1)	
Present	7 (33.3)	15 (78.9)	
Lauren type			0.753
Intestinal	5 (23.8)	7 (36.8)	
Diffuse/mixed	13 (61.9)	9 (47.4)	
Undetermined	3 (14.3)	3 (15.8)	
Number of disease sites			0.385
One (only locoregional)	7 (33.3)	4 (21.1)	
Two or more	14 (66.7)	15 (78.9)	
POC			1
No POC/Clavien 1-2	19 (90.5)	17 (89.5)	
Clavien 3-5	2 (9.5)	2 (10.5)	
Length of hospital stay (days)			0.455
Median (IQR)	3 (3-7.5)	4 (4-8)	
Palliative treatment-1 st Line			0.012
No	5 (23.8)	12 (63.2)	
Yes	16 (76.2)	7 (36.8)	

30-d mortality			0.049
No	18 (85.7)	11 (57.9)	
Yes	3 (14.3)	8 (42.1)	
90-d mortality			0.027
No	14 (66.7)	6 (31.6)	
Yes	7 (33.3)	13 (68.4)	

SD: Standard deviation; IQR: Interquartile range; POC: Postoperative complication; CCI: Charlson's comorbidity index; CT: Computed tomography; NLR: Neutrophil lymphocyte ratio; ASA: American Society of Anesthesiologists; BMI: Body mass index.

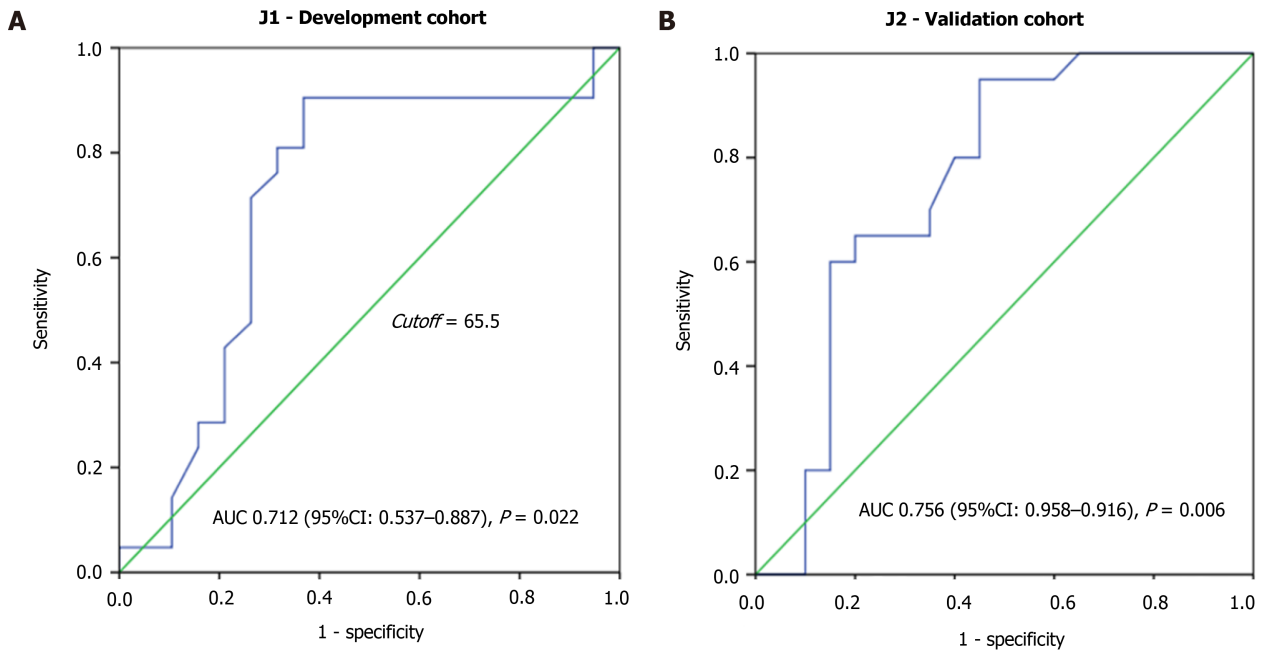


Figure 1 Receiver operating characteristic for the diagnostic accuracy of risk-score. A: Development cohort in predicting 90-d mortality in patients with stage IV gastric cancer (GC) undergoing jejunostomy; B: Validation cohort in predicting 90-d mortality in patients with stage IV GC undergoing jejunostomy. The area under the receiver operating characteristic curve (AUC) was 71.2% in the development group, with an estimated value of 65.5 for optimal cutoff. In the validation cohort the AUC was 75.6%, demonstrating a good diagnostic accuracy for 90-d mortality. AUC: Area under the receiver operating characteristic curve.

predict 90-d mortality, it did not affect the performance of the model. Furthermore, the score performance was higher in the validation cohort compared to the development group (AUC 0.756 *vs* AUC 0.712, respectively).

Some limitations in the present study should be mentioned. Unfortunately, due to its retrospective design, other outcomes related to the effectiveness of nutritional therapy provided by jejunostomy have not been evaluated. Analysis of weight curve, performance status, and quality of life could provide other relevant information. Also, the number of cases is a limitation. Even in a referral center, jejunostomy has a limited role in cancer treatment. This leads to a low volume of reports in the literature concerning its results, and maintains doubts as to its real benefit in cancer care and survival of these patients.

Accordingly, we believe that our series can provide data to assist in the decision of choosing the best way to maintain enteral nutrition. Since our score is easy to perform, it can be applied in other centers—including retrospectively—to evaluate their reproducibility and impact on the oncological outcomes of jejunostomy in these patients.

CONCLUSION

The scoring system developed with 11 variables related to patient's performance status and medical condition was able to distinguish patients submitted to jejunostomy with

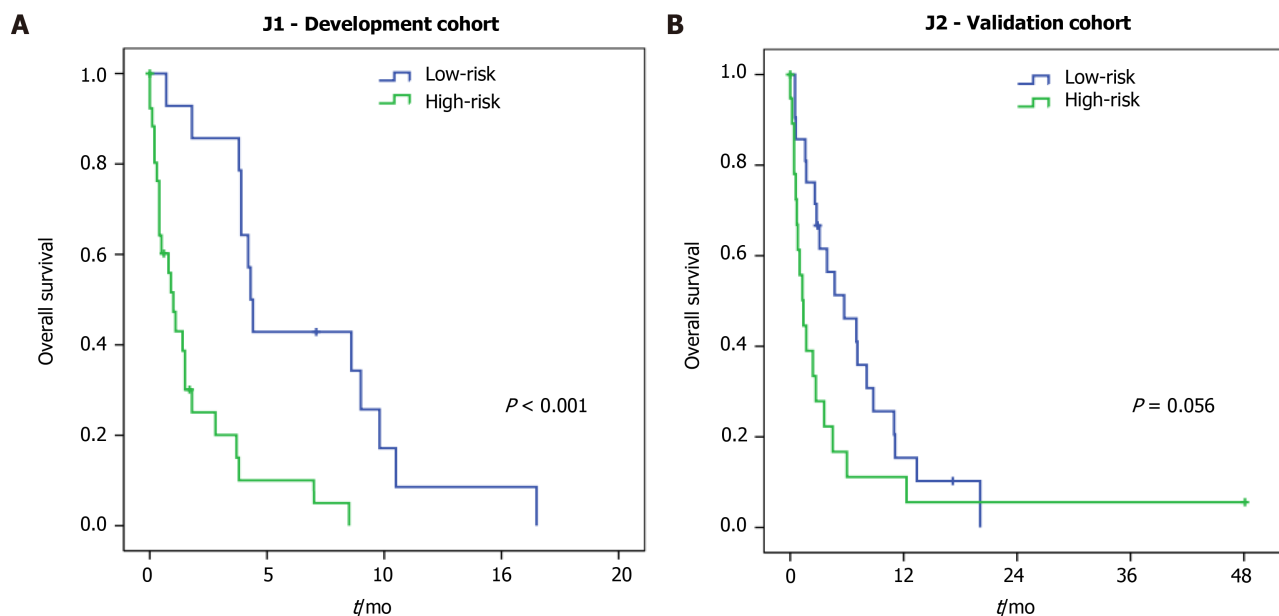


Figure 2 Overall survival of patients with stage IV gastric cancer who underwent jejunostomy according to the risk group. A: Score development cohort; B: Score validation cohort.

a high risk of 90 d mortality. In addition, the score identified patients who were able to receive more CMT in the validation cohort.

ARTICLE HIGHLIGHTS

Research background

Palliative gastrectomy is the initial treatment option for locally advanced gastric cancer (GC) with gastric outlet obstruction whenever it is feasible. Unfortunately, in some cases, nasogastric tube or jejunostomy becomes the therapeutic alternative to allow maintenance of nutritional enteral support.

Research motivation

The limited survival of these patients raises doubts about who benefits from jejunostomy.

Research objectives

This study aimed to create a prognostic score for 90-d mortality for stage IV GC patients who underwent jejunostomy based on the clinical variables related to survival.

Research methods

We conducted a retrospective analysis of 80 stage IV patients who underwent jejunostomy for obstructive GC. To create a scoring system, patients were randomized into two groups (1:1) by computer using statistical software. The score was developed with half of the patients and further evaluated in a validation cohort with the remaining patients. The score was developed with 90-d mortality as the main outcome.

Research results

We provided a simple and feasible score system with 11 variables easily available in the clinical assessment of patients. The score demonstrated an accuracy of 75.6% in the validation cohort and was associated with the mortality rates in patients who underwent jejunostomy.

Research conclusions

The scoring system developed with variables related to patient's performance status and medical condition was able to distinguish patients submitted to jejunostomy with a high risk of 90 d mortality.

Research perspectives

The results of our series may contribute to identifying stage IV GC with unresectable tumors who can obtain better results with the jejunostomy. In addition, the score may contribute to the selection of patients who were able to receive chemotherapy, and thereby improving their survival.

REFERENCES

- 1 **Bray F**, Ferlay J, Soerjomataram I, Siegel RL, Torre LA, Jemal A. Global cancer statistics 2018: GLOBOCAN estimates of incidence and mortality worldwide for 36 cancers in 185 countries. *CA Cancer J Clin* 2018; **68**: 394-424 [PMID: 30207593 DOI: 10.3322/caac.21492]
- 2 **Ramos MFKP**, Barchi LC, de Oliveira RJ, Pereira MA, Mucerino DR, Ribeiro U Jr, Zilberstein B, Ceconello I. Gastric partitioning for the treatment of malignant gastric outlet obstruction. *World J Gastrointest Oncol* 2019; **11**: 1161-1171 [PMID: 31908721 DOI: 10.4251/wjgo.v11.i12.1161]
- 3 **Jeurnink SM**, Steyerberg EW, van Hooft JE, van Eijck CH, Schwartz MP, Vleggaar FP, Kuipers EJ, Siersema PD; Dutch SUSTENT Study Group. Surgical gastrojejunostomy or endoscopic stent placement for the palliation of malignant gastric outlet obstruction (SUSTENT study): a multicenter randomized trial. *Gastrointest Endosc* 2010; **71**: 490-499 [PMID: 20003966 DOI: 10.1016/j.gie.2009.09.042]
- 4 **Torres Júnior LG**, de Vasconcellos Santos FA, Correia MI. Randomized clinical trial: nasoenteric tube or jejunostomy as a route for nutrition after major upper gastrointestinal operations. *World J Surg* 2014; **38**: 2241-2246 [PMID: 24806623 DOI: 10.1007/s00268-014-2589-9]
- 5 **Sun Z**, Sheno MM, Nussbaum DP, Keenan JE, Gulack BC, Tyler DS, Speicher PJ, Blazer DG 3rd. Feeding jejunostomy tube placement during resection of gastric cancers. *J Surg Res* 2016; **200**: 189-194 [PMID: 26248478 DOI: 10.1016/j.jss.2015.07.014]
- 6 **Doyle DJ**, Garmon EH. American Society of Anesthesiologists Classification (ASA Class). StatPearls. Treasure Island FL: StatPearls Publishing LLC., 2017
- 7 **Charlson ME**, Pompei P, Ales KL, MacKenzie CR. A new method of classifying prognostic comorbidity in longitudinal studies: development and validation. *J Chronic Dis* 1987; **40**: 373-383 [PMID: 3558716 DOI: 10.1016/0021-9681(87)90171-8]
- 8 **Dindo D**, Demartines N, Clavien PA. Classification of surgical complications: a new proposal with evaluation in a cohort of 6336 patients and results of a survey. *Ann Surg* 2004; **240**: 205-213 [PMID: 15273542 DOI: 10.1097/01.sla.0000133083.54934.ae]
- 9 **Cunningham D**, Starling N, Rao S, Iveson T, Nicolson M, Coxon F, Middleton G, Daniel F, Oates J, Norman AR; Upper Gastrointestinal Clinical Studies Group of the National Cancer Research Institute of the United Kingdom. Capecitabine and oxaliplatin for advanced esophagogastric cancer. *N Engl J Med* 2008; **358**: 36-46 [PMID: 18172173 DOI: 10.1056/NEJMoa073149]
- 10 **Ilson DH**, Saltz L, Enzinger P, Huang Y, Kornblith A, Gollub M, O'Reilly E, Schwartz G, DeGroff J, Gonzalez G, Kelsen DP. Phase II trial of weekly irinotecan plus cisplatin in advanced esophageal cancer. *J Clin Oncol* 1999; **17**: 3270-3275 [PMID: 10506629 DOI: 10.1200/JCO.1999.17.10.3270]
- 11 **Hironaka S**, Ueda S, Yasui H, Nishina T, Tsuda M, Tsumura T, Sugimoto N, Shimodaira H, Tokunaga S, Moriwaki T, Esaki T, Nagase M, Fujitani K, Yamaguchi K, Ura T, Hamamoto Y, Morita S, Okamoto I, Boku N, Hyodo I. Randomized, open-label, phase III study comparing irinotecan with paclitaxel in patients with advanced gastric cancer without severe peritoneal metastasis after failure of prior combination chemotherapy using fluoropyrimidine plus platinum: WJOG 4007 trial. *J Clin Oncol* 2013; **31**: 4438-4444 [PMID: 24190112 DOI: 10.1200/JCO.2012.48.5805]
- 12 **Ramos MFKP**, Pereira MA, Yagi OK, Dias AR, Charruf AZ, Oliveira RJ, Zaidan EP, Zilberstein B, Ribeiro-Júnior U, Ceconello I. Surgical treatment of gastric cancer: a 10-year experience in a high-volume university hospital. *Clinics (Sao Paulo)* 2018; **73**: e543s [PMID: 30540120 DOI: 10.6061/clinics/2018/e543s]
- 13 **Ben Kridis W**, Marrekchi G, Mzali R, Daoud J, Khanfir A. Prognostic factors in metastatic gastric carcinoma. *Exp Oncol* 2019; **41**: 173-175 [PMID: 31262152 DOI: 10.32471/exp-oncology.2312-8852.vol-41-no-2.13283]
- 14 **Tan HL**, Chia CS, Tan GHC, Choo SP, Tai DW, Chua CWL, Ng MCH, Soo KC, Teo MCC. Metastatic gastric cancer: Does the site of metastasis make a difference? *Asia Pac J Clin Oncol* 2019; **15**: 10-17 [PMID: 29920947 DOI: 10.1111/ajco.13025]
- 15 **Chen XL**, Xue L, Wang W, Chen HN, Zhang WH, Liu K, Chen XZ, Yang K, Zhang B, Chen ZX, Chen JP, Zhou ZG, Hu JK. Prognostic significance of the combination of preoperative hemoglobin, albumin, lymphocyte and platelet in patients with gastric carcinoma: a retrospective cohort study. *Oncotarget* 2015; **6**: 41370-41382 [PMID: 26497995 DOI: 10.18632/oncotarget.5629]
- 16 **Cotogni P**, Stragliotto S, Ossola M, Collo A, Riso S; On Behalf Of The Intersociety Italian Working Group For Nutritional Support In Cancer. The Role of Nutritional Support for Cancer Patients in Palliative Care. *Nutrients* 2021; **13** [PMID: 33498997 DOI: 10.3390/nu13020306]
- 17 **Bozzetti F**. Is there a place for nutrition in palliative care? *Support Care Cancer* 2020; **28**: 4069-4075 [PMID: 32417968 DOI: 10.1007/s00520-020-05505-x]
- 18 **Mohri Y**, Tanaka K, Toiyama Y, Ohi M, Yasuda H, Inoue Y, Kusunoki M. Impact of Preoperative

- Neutrophil to Lymphocyte Ratio and Postoperative Infectious Complications on Survival After Curative Gastrectomy for Gastric Cancer: A Single Institutional Cohort Study. *Medicine (Baltimore)* 2016; **95**: e3125 [PMID: 26986164 DOI: 10.1097/MD.00000000000003125]
- 19 **Chiba T**, Marusawa H, Ushijima T. Inflammation-associated cancer development in digestive organs: mechanisms and roles for genetic and epigenetic modulation. *Gastroenterology* 2012; **143**: 550-563 [PMID: 22796521 DOI: 10.1053/j.gastro.2012.07.009]
- 20 **Blakely AM**, Ajmal S, Sargent RE, Ng TT, Miner TJ. Critical analysis of feeding jejunostomy following resection of upper gastrointestinal malignancies. *World J Gastrointest Surg* 2017; **9**: 53-60 [PMID: 28289510 DOI: 10.4240/wjgs.v9.i2.53]
- 21 **Brenkman HJF**, Roelen SVS, Steenhagen E, Ruurda JP, van Hillegersberg R. Postoperative complications and weight loss following jejunostomy tube feeding after total gastrectomy for advanced adenocarcinomas. *Chin J Cancer Res* 2017; **29**: 333-340 [PMID: 28947865 DOI: 10.21147/j.issn.1000-9604.2017.04.06]
- 22 **Wang CS**, Chao TC, Jan YY, Jeng LB, Hwang TL, Chen MF. Benefits of palliative surgery for far-advanced gastric cancer. *Chang Gung Med J* 2002; **25**: 792-802 [PMID: 12635835]
- 23 **Schmidt B**, Look-Hong N, Maduekwe UN, Chang K, Hong TS, Kwak EL, Lauwers GY, Rattner DW, Mullen JT, Yoon SS. Noncurative gastrectomy for gastric adenocarcinoma should only be performed in highly selected patients. *Ann Surg Oncol* 2013; **20**: 3512-3518 [PMID: 23765416 DOI: 10.1245/s10434-013-3024-4]



Published by **Baishideng Publishing Group Inc**
7041 Koll Center Parkway, Suite 160, Pleasanton, CA 94566, USA

Telephone: +1-925-3991568

E-mail: bpgoffice@wjgnet.com

Help Desk: <https://www.f6publishing.com/helpdesk>

<https://www.wjgnet.com>

