

Match Overview

1	Internet 396 words crawled on 08-Apr-2019 onlinelibrary.wiley.com	5%
2	Internet 304 words crawled on 20-Mar-2019 dokumentis.com	4%
3	Internet 191 words crawled on 18-Oct-2019 academic.oup.com	3%
4	Internet 179 words crawled on 01-Jul-2018 circ.ahajournals.org	2%
5	Internet 118 words crawled on 19-Jan-2020 pergamos.lib.uoa.gr	2%
6	Internet 64 words crawled on 20-Aug-2020 www.kjim.org	1%
	Internet 51 words	1%

Name of Journal: *World Journal of Cardiology*

Manuscript NO: 67539

Manuscript Type: REVIEW

Current concept in the diagnosis, treatment and rehabilitation of patients with congestive heart failure

Ivana Sopek Merkaš, Ana Marija Slišković, Nenad Lakušić

Abstract

Heart failure (HF) is a major public health problem with a prevalence of 1%-2% in developed countries. The underlying pathophysiology of HF is complex and as a clinical syndrome is characterized by various symptoms and signs. HF is classified

Current Concept in the Diagnosis, Treatment and Rehabilitation of I



Sign in

ALL

IMAGES

VIDEOS

 Add the Give with Bing extension >

1,880,000 Results

Any time ▼

[Congestive Heart Failure: Life Expectancy and Prognosis](https://www.verywellhealth.com/congestive-heart...)

<https://www.verywellhealth.com/congestive-heart...> ▼

Mar 10, 2021 · **Congestive heart failure** is broken down into four stages, ranging from an initial high risk of developing heart failure to advanced heart failure. As symptoms worsen, so does the stage of **CHF**. The prognosis for **CHF** is broken down into increme...

[Congestive Heart Failure \(CHF\) Nursing Care Plan & ...](https://www.rnpedia.com/nursing-notes/medical...)

<https://www.rnpedia.com/nursing-notes/medical...> ▼

Jan 03, 2015 · **Congestive Heart Failure** or CHF is a severe circulatory congestion due to decreased myocardial contractility, which results in the **heart's** inability to pump sufficient blood to meet the body's needs. About 80% of CHF cases occur before 1 year of age; Etiology. The primary cause of CHF in the first 3 years of life is CHD.

[Care Plans](#) · [Practice Exams](#)

Search Tools

[Turn off Hover Translation \(关闭取词\)](#)

Current concept in the diagnosis, treatment and rehabilitation of pa

 ALL IMAGES VIDEOS

2,080,000 Results

Any time ▼

Congestive Heart Failure - PubMed

<https://pubmed.ncbi.nlm.nih.gov/28613623>

Feb 11, 2021 · Randomized controlled trials in **patients** with HF have mainly enrolled **patients** with HFrEF with an EF $\leq 35\%$ or $\leq 40\%$, and it is only in these **patients** that efficacious therapies have been demonstrated to date. According to the most recent ACC/AHA guidelines on **heart failure**, HFrEF is defined as the clinical **diagnosis** of HF with EF $\leq 40\%$. In routine clinical practice, many clinicians ...



See

Cardiac Rehab for Heart Failure | American Heart Association

<https://www.heart.org/en/health-topics/heart...> ▼

397,000 Results Any time ▾

Congestive heart failure. New frontiers.

<https://www.ncbi.nlm.nih.gov/pubmed/1678903>

Congestive heart failure is a common syndrome with high mortality in its advanced stages. **Current** therapy includes the use of vasodilator drugs, which have been shown to prolong life. Despite **current** therapy, mortality remains high in **patients** with severe **heart failure**.

Cited by: 4 **Author:** W. W. Parmley, K. Chatterjee, G. S. Francis, ...

Publish Year: 1991

Inter-professional team approach to patients with heart ...

<https://www.ncbi.nlm.nih.gov/pmc/articles/PMC1768956>

Recently the use of B type natriuretic peptide (BNP) has been recognised as being increasingly important in the **diagnosis of heart failure** and helpful in guiding **treatment** and monitoring the course of **heart failure**, particularly in alerting clinicians to decompensation. 20 Taking this **concept** further, it can be hypothesised that BNP measurement may also prove a useful addition to clinical assessment in ...

Cited by: 57 **Author:** Trijntje Jaarsma

Publish Year: 2005

PEOPLE ALSO ASK

What do you need to know about congestive heart failure? ▾

What are the treatment objectives for heart failure? ▾

What are the ESC guidelines for acute heart failure? ▾

How does cardiac rehab help with heart failure? ▾

Feedback

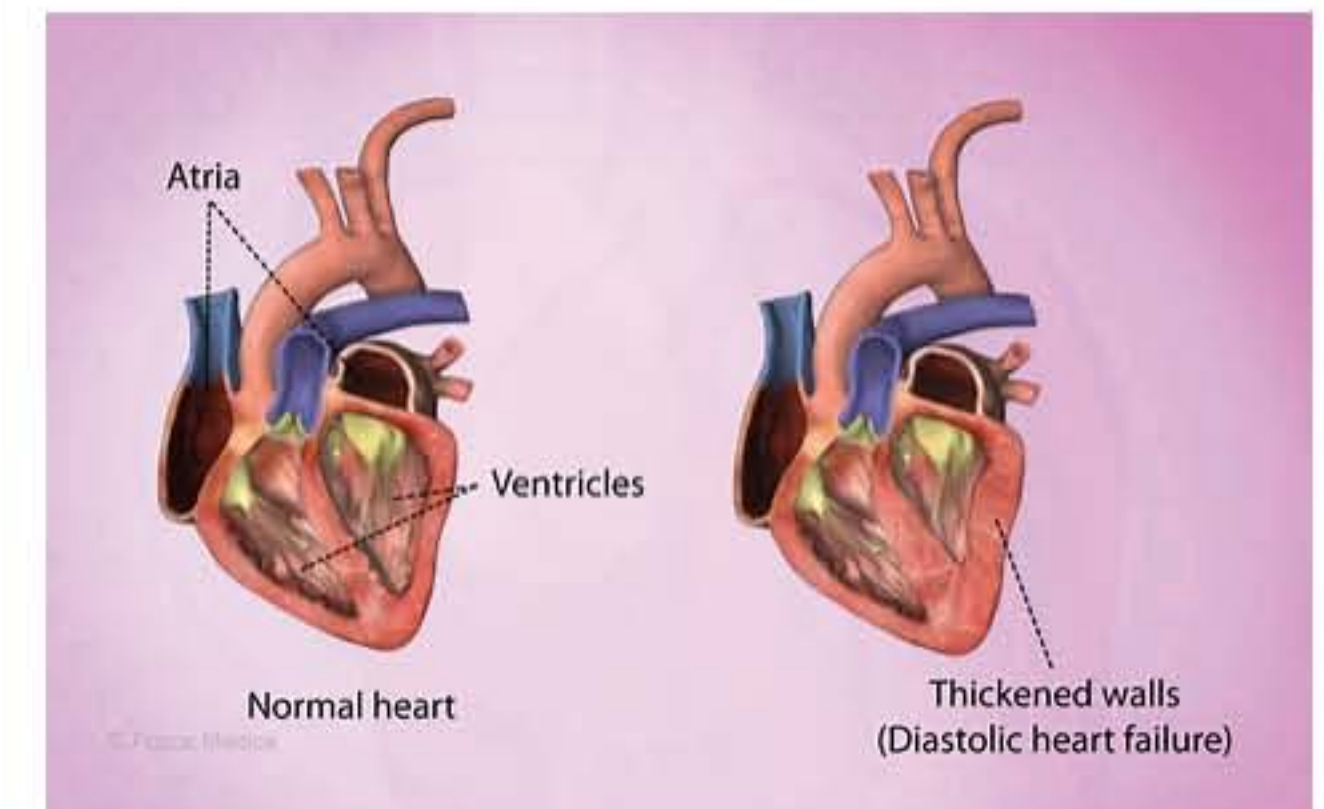
Cardiac Rehab for Heart Failure | American Heart Association

<https://www.heart.org/en/health-topics/heart...> ▾

Cardiac **rehab** is a medically supervised program that includes exercise training, education on **heart-healthy** living, and in many cases, counseling to reduce stress. It helps **patients** recover and improve physical, mental and social function. The goal is to stabilize, slow or even reverse the progression of **heart**

Heart Failure

Medical Condition



A progressive heart disease that affects pumping action of the heart muscles. This causes fatigue, shortness of breath.

🏠 Very common (More than 3 million cases per year in US)

🧪 Often requires lab test or imaging

🔧 Treatments can help manage condition, no known cure

🕒 Can be lifelong

Coronary artery disease is considered as a primary cause of heart failure. It is a progressive disease that results from damaged muscles of the heart that affect their blood pumping action. This reduces the blood supplied throughout the body, leading to tiredness, shortness of breath, reduced physical activity, and swelling of ankles and legs. Generally the treatment helps to reduce the symptoms but the specializing treatment depends on the progress of the disease.

Symptoms

Heart failure may be symptomless or range from mild to severe